

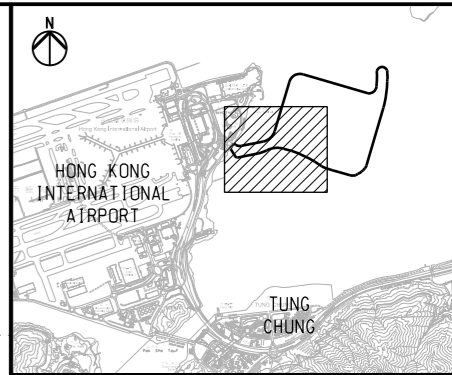
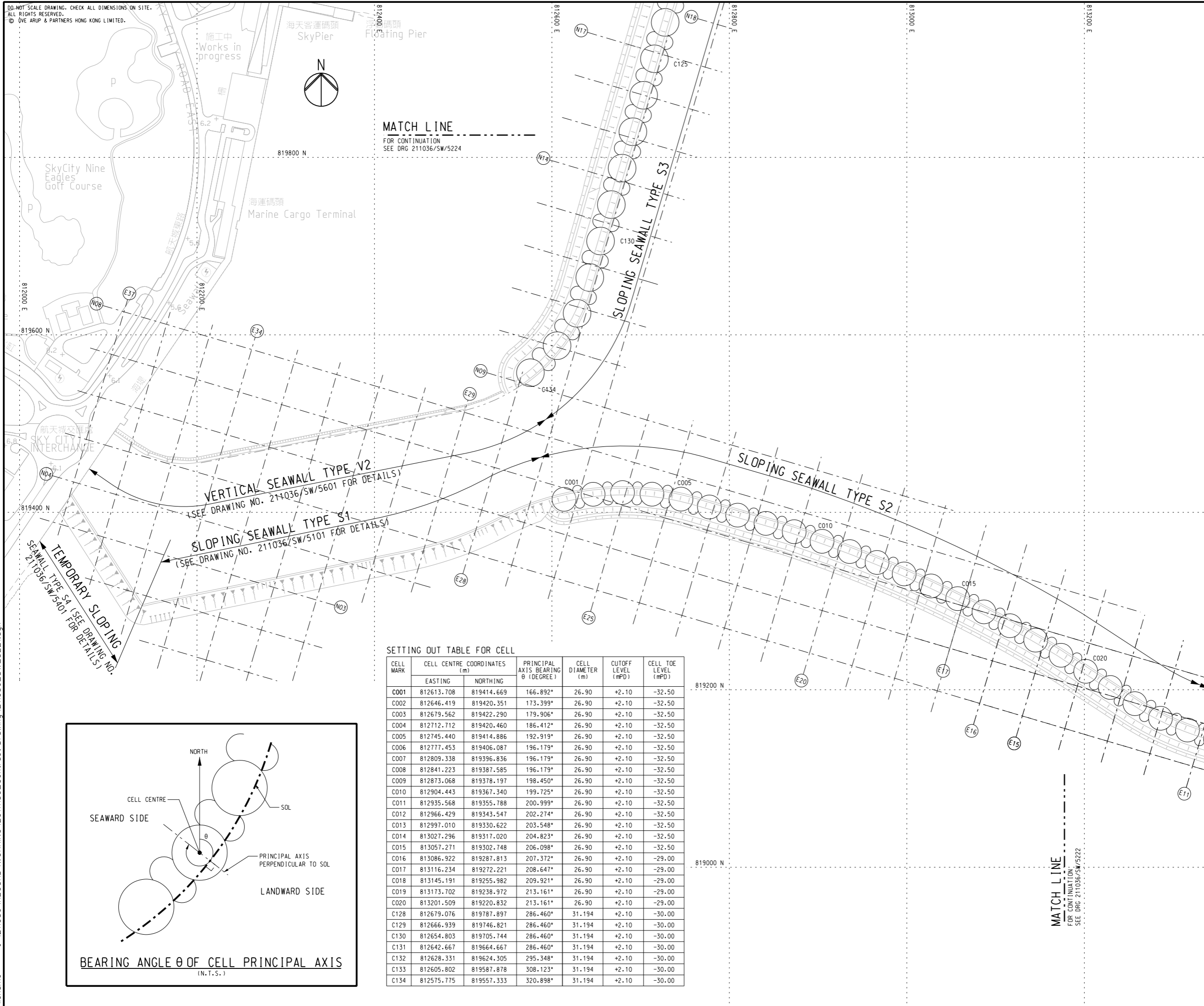
Contract No. HY/2010/02 Hong Kong - Zhuhai - Macao Bridge
 Hong Kong Boundary Crossing Facilities - Reclamation Works
 Works Done in June 12 to Aug 12

ID	Task Name	Duration	Start	Finish	Jun '12						Jul '12				Aug '12			
					20	27	03	10	17	24	01	08	15	22	29	05	12	19
1																		
2	the 120m accessway at CH4900 - CH5600	30 days	Thu 19/07/12	Fri 17/08/12														
3	Consent for resume site boundary by MD	0 days	Thu 19/07/12	Thu 19/07/12														
4	Possession of 120M barge accessway in Airport SkyPier Basin	0 days	Thu 19/07/12	Thu 19/07/12														
5	Realignment of Marker Buoy	3 days	Thu 19/07/12	Sat 21/07/12														
6	Realignment of the silt curtain (May affect the construction of cellular walls)	30 days	Thu 19/07/12	Fri 17/08/12														
7	Constraint for Commencement of Cellular Walls	16 days	Mon 04/06/12	Tue 19/06/12														
8	Mobilization of Equipment & Plant	15 days	Mon 04/06/12	Mon 18/06/12														
9	Application of AHR	13 days	Tue 05/06/12	Tue 19/06/12														
10	Application of CNP	13 days	Tue 05/06/12	Tue 19/06/12														
11	Labor arrival (training)	5 days	Fri 15/06/12	Tue 19/06/12														
12	Design calculation with ICE	0 days	Tue 19/06/12	Tue 19/06/12														
13	In Portion A	581 days	Sat 23/06/12	Fri 24/01/14														
14	Cellular Structure C117 to C134 18nrs	177 days	Sat 23/06/12	Sat 29/12/12														
15	Cellular Structure C117 to C121 5cells 601	149 days	Sat 23/06/12	Thu 29/11/12														
48	In Portion D	713 days	Fri 01/06/12	Wed 14/05/14														
49	Engineering Design & Submission	175.09 days	Tue 03/07/12	Wed 30/01/13														
50	Working Drawings	87.5 days	Tue 03/07/12	Mon 15/10/12														
51	Finalise engineering review	87.5 days	Tue 03/07/12	Mon 15/10/12														
52	Preparation, Submission & Approval of Temporary Work Designs for construction of culverts	129 days	Tue 03/07/12	Mon 03/12/12														
57	Design for drainage diversion stg1 - preparation & submission	30 days	Tue 03/07/12	Mon 06/08/12														
58	Design for drainage diversion stg1 - comments	17 days	Tue 07/08/12	Thu 23/08/12														
76	Submission & Approval for Relevant Departments	76.09 days	Wed 01/08/12	Thu 01/11/12														
77	Working drawing of EC1 - Preparation & Submission	62.09 days	Wed 01/08/12	Mon 15/10/12														
90	Construction	713 days	Fri 01/06/12	Wed 14/05/14														
91	FTB20 Operating 14th July 2012	0 days	Sat 14/07/12	Sat 14/07/12														
92	FTB16 Operating 16th August 2012	0 days	Thu 16/08/12	Thu 16/08/12														
93	Possession of site of Pier and resume site boundary	0 days	Wed 06/06/12	Wed 06/06/12														
94	Silt Curtain Laying	15 days	Wed 06/06/12	Wed 20/06/12														
95	Geotextile for stone columns	46 days	Fri 01/06/12	Fri 20/07/12														
96	Stone Blanket for stone columns	46 days	Fri 01/06/12	Fri 20/07/12														
97	Stone Columns by Marine Plant	142 days	Sat 14/07/12	Thu 13/12/12														
98	Stone Columns West 3,350nrs	112 days	Thu 16/08/12	Thu 13/12/12														
99	Stone Columns 90nrs (6nrs/day *15days) FTB16	15 days	Thu 16/08/12	Fri 31/08/12														
102	Stone Columns East 3,350nrs	138 days	Sat 14/07/12	Sun 09/12/12														
103	Stone Columns 91nrs FTB20 upto 31July2012	16 days	Sat 14/07/12	Tue 31/07/12														
104	Stone Columns 84nrs (6nrs/day *14days) FTB20	14 days	Wed 01/08/12	Wed 15/08/12														
105	Stone Columns 1,615nrs (15nrs/day *108days) FTB20	108 days	Thu 16/08/12	Sun 09/12/12														
158	In Portion B	740 days	Mon 23/07/12	Fri 01/08/14														
159	Cellular Structures & Connecting Arcs K013 to C051 39 Arcs	233 days	Mon 23/07/12	Tue 12/03/13														
161	Cellular Structures K023 to K040 18cells 601	152 days	Mon 23/07/12	Wed 02/01/13														
162	Cellular Structures K041 to K051 11cells Crane 16	90 days	Fri 27/07/12	Wed 31/10/12														
204	Stone Columns in Other Portions	334 days	Mon 11/06/12	Wed 05/06/13														
205	Stone Columns inside cells and 2 rows by Marine Plant	224 days	Mon 11/06/12	Wed 06/02/13														
206	Stone Columns inside cells and 2 rows Portion C2a C114 - C101 & C2c C100 to C096 19cells (2,0	158 days	Mon 11/06/12	Tue 27/11/12														
207	FTB17 Stone Columns 9cells 990nrs	141 days	Fri 29/06/12	Tue 27/11/12														
208	Stone Columns (53nrs) upto 6August2012 FTB17	36 days	Fri 29/06/12	Mon 06/08/12														
209	Stone Columns 31nrs (8nrs/day X6days) FTB17	5 days	Tue 07/08/12	Sat 11/08/12														
210	Mobilization of vibro probes stone columns barge FTB17	18 days	Sun 12/08/12	Fri 31/08/12														
212	FTB19 Stone Columns 10cells 1,100nrs	114 days	Mon 11/06/12	Thu 11/10/12														
213	Stone Columns (230nrs) upto 31July2012 FTB19	47 days	Mon 11/06/12	Tue 31/07/12														
214	Stone Columns 32nrs (8nrs/day x 4days) FTB19	6 days	Wed 01/08/12	Mon 06/08/12														
215	Mobilization of vibro probes stone columns barge FTB19	5 days	Tue 07/08/12	Sun 12/08/12														
216	Stone Columns 838nrs (15nrs x 56days) FTB19	56 days	Mon 13/08/12	Thu 11/10/12														
253	Construction of Cellular Structures in Other Portions	257 days	Mon 13/08/12	Fri 26/04/13														
254	Construction of Cellular Walls C052 to C089 & C096 to C116 59cells	225 days	Mon 13/08/12	Thu 11/04/13														
255	Cellular Structures Portion E2 K052 to C063 12cells Crane 16	122.8 days	Mon 13/08/12	Sat 22/12/12														

Project: Revised Programme Ver.10 20120728 15nrs per day in portion D
 Date: Fri 05/10/12 15:56 Scheme 5d Revised Programme Ver.3.5 2012081

Task Summary Rolled Up Milestone Split Project Summary
 Milestone Rolled Up Task Rolled Up Progress External Tasks Deadline

DO NOT SCALE DRAWING. CHECK ALL DIMENSIONS ON SITE.
ALL RIGHTS RESERVED.
© OVE ARUP & PARTNERS HONG KONG LIMITED.



KEY PLAN

NOTES

1. ALL DIMENSIONS ARE IN MILLIMETRES UNLESS SHOWN OTHERWISE.
2. ALL LEVELS ARE IN METRES ABOVE HONG KONG PRINCIPAL DATUM (mPD).
3. ALL COORDINATES ARE RELATED TO HONG KONG 1980 GRID.
4. FOR TYPICAL ARRANGEMENT OF CELLS AND CONNECTING ARCS REFER TO DRG NO. 211036/SW/5261 AND 5262.
5. FOR DETAILS OF SLOPING SEAWALL IN FRONT OF CELLULAR STRUCTURES REFER TO DRG NO. 211036/SW/5201 TO 5206 AND 5231 TO 5233.

LEGEND

- SETTING OUT LINE (SOL)
REFER TO DRG NO. 211036/SL/1002
- ○ ○ ○ PROPOSED CELLULAR STRUCTURE
- CELL MARK
- 1+000 CHAINAGE IN METRES ALONG SOL
- GRID LINE

Rev	Description	By	Date
-	FOR CONSTRUCTION	TL	11/11

Consultant

ARUP 奧雅納工程顧問 •
Ove Arup & Partners Hong Kong Limited

Supported By :

- Ecosystems Ltd. ○
- EDA Marine Ltd. ○
- Geotechnical Consulting Group (Asia) Ltd. ○
- Hong Kong Cetacean Research Project ○
- IntelBuild Technyx Asia Limited ○
- Tony Gee and Partners LLP ○

Contract No. and Title:
Contract No. HY/2010/02
Hong Kong-Zhuhai-Macao Bridge
Hong Kong Boundary Crossing Facilities
- Reclamation Works

Drawing title
SEAWALLS S2, S3 AND V1
CELLULAR STRUCTURE
SETTING OUT PLAN

(SHEET 1 OF 4)

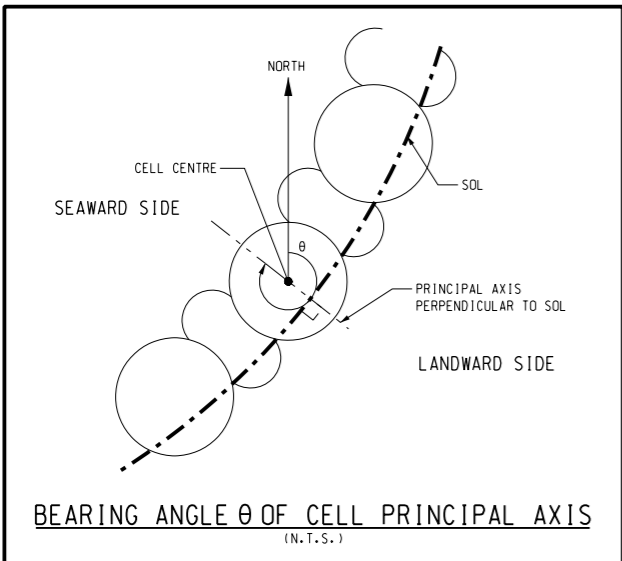
Drawing no. 211036/SW/5221		Rev. -	
Drawn RL	Date 06/10	Checked KKY	Approved DML
Scale 1:2000 @A1 1:4000 @A3		Status WORKING	

COPYRIGHT RESERVED



SETTING OUT TABLE FOR CELL

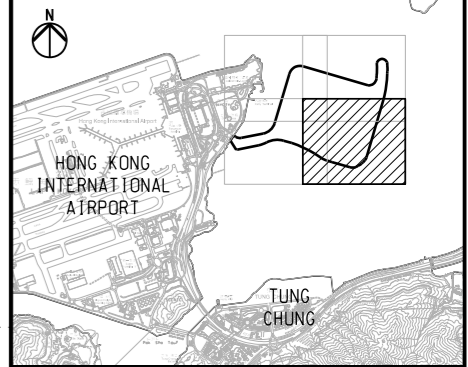
CELL MARK	CELL CENTRE COORDINATES (m)		PRINCIPAL AXIS BEARING θ (DEGREE)	CELL DIAMETER (m)	CUTOFF LEVEL (mPD)	CELL TOE LEVEL (mPD)
	EASTING	NORTHING				
C001	812613.708	819414.669	166.892°	26.90	+2.10	-32.50
C002	812646.419	819420.351	173.399°	26.90	+2.10	-32.50
C003	812679.562	819422.290	179.906°	26.90	+2.10	-32.50
C004	812712.712	819420.460	186.412°	26.90	+2.10	-32.50
C005	812745.440	819414.886	192.919°	26.90	+2.10	-32.50
C006	812777.453	819406.087	196.179°	26.90	+2.10	-32.50
C007	812809.338	819396.836	196.179°	26.90	+2.10	-32.50
C008	812841.223	819387.585	196.179°	26.90	+2.10	-32.50
C009	812873.068	819378.197	198.450°	26.90	+2.10	-32.50
C010	812904.443	819367.340	199.725°	26.90	+2.10	-32.50
C011	812935.568	819355.788	200.999°	26.90	+2.10	-32.50
C012	812966.429	819343.547	202.274°	26.90	+2.10	-32.50
C013	812997.010	819330.622	203.548°	26.90	+2.10	-32.50
C014	813027.296	819317.020	204.823°	26.90	+2.10	-32.50
C015	813057.271	819302.748	206.098°	26.90	+2.10	-32.50
C016	813086.922	819287.813	207.372°	26.90	+2.10	-29.00
C017	813116.234	819272.221	208.647°	26.90	+2.10	-29.00
C018	813145.191	819255.982	209.921°	26.90	+2.10	-29.00
C019	813173.702	819238.972	213.161°	26.90	+2.10	-29.00
C020	813201.509	819220.832	213.161°	26.90	+2.10	-29.00
C128	812679.076	819787.897	286.460°	31.194	+2.10	-30.00
C129	812666.939	819746.821	286.460°	31.194	+2.10	-30.00
C130	812654.803	819705.744	286.460°	31.194	+2.10	-30.00
C131	812642.667	819664.667	286.460°	31.194	+2.10	-30.00
C132	812628.331	819624.305	295.348°	31.194	+2.10	-30.00
C133	812605.802	819587.878	308.123°	31.194	+2.10	-30.00
C134	812575.775	819557.333	320.898°	31.194	+2.10	-30.00



DO NOT SCALE DRAWING. CHECK ALL DIMENSIONS ON SITE.
ALL RIGHTS RESERVED.
© OVE ARUP & PARTNERS HONG KONG LIMITED.

SETTING OUT TABLE FOR CELL

CELL MARK	CELL CENTRE COORDINATES (m)		PRINCIPAL AXIS BEARING θ (DEGREE)	CELL DIAMETER (m)	CUTOFF LEVEL (mPD)	CELL TOE LEVEL (mPD)
	EASTING	NORTHING				
C021	813229.266	819202.618	213.161*	26.90	+2.10	-25.00
C022	813257.010	819184.384	213.161*	26.90	+2.10	-25.00
C023	813285.845	819167.927	206.621*	26.90	+2.10	-25.00
C024	813316.285	819154.674	200.432*	26.90	+2.10	-25.00
C025	813347.890	819144.503	196.459*	26.90	+2.10	-25.00
C026	813379.730	819135.097	196.459*	26.90	+2.10	-25.00
C027	813411.569	819125.690	196.459*	26.90	+2.10	-25.00
C028	813443.409	819116.284	196.459*	26.90	+2.10	-25.00
C029	813475.248	819106.877	196.459*	26.90	+2.10	-25.00
C030	813507.088	819097.470	196.459*	26.90	+2.10	-25.00
C031	813538.927	819088.064	196.459*	26.90	+2.10	-25.00
C032	813570.767	819078.657	196.459*	26.90	+2.10	-25.00
C033	813602.623	819069.308	196.459*	26.90	+2.10	-25.00
C034	813634.497	819060.018	198.941*	26.90	+2.10	-25.00
C035	813667.035	819053.421	183.979*	26.90	+2.10	-25.00
C036	813700.173	819055.449	169.017*	26.90	+2.10	-25.00
C037	813731.316	819066.953	151.744*	26.90	+2.10	-25.00
C038	813760.560	819082.670	150.248*	26.90	+2.10	-25.00
C039	813788.575	819100.486	145.279*	26.90	+2.10	-25.00
C040	813814.826	819120.812	138.867*	26.90	+2.10	-25.00
C041	813838.209	819144.380	130.200*	26.90	+2.10	-25.00
C042	813857.241	819171.584	119.179*	26.90	+2.10	-25.00
C043	813869.897	819202.277	106.458*	26.90	+2.10	-25.00
C044	813879.303	819234.116	106.458*	26.90	+2.10	-25.00
C045	813888.709	819265.956	106.458*	26.90	+2.10	-25.00
C046	813898.115	819297.796	106.458*	26.90	+2.10	-25.00
C047	813907.521	819329.636	106.458*	26.90	+2.10	-25.00
C048	813916.927	819361.475	106.458*	26.90	+2.10	-25.00
C049	813926.333	819393.315	106.458*	26.90	+2.10	-25.00
C050	813935.739	819425.155	106.458*	26.90	+2.10	-25.00
C051	813945.145	819456.994	106.458*	26.90	+2.10	-25.00
C052	813954.551	819488.834	106.458*	26.90	+2.10	-25.00
C053	813963.957	819520.674	106.458*	26.90	+2.10	-25.00
C054	813973.363	819552.514	106.458*	26.90	+2.10	-25.00
C055	813982.769	819584.353	106.458*	26.90	+2.10	-25.00
C056	813992.175	819616.193	106.458*	26.90	+2.10	-25.00
C057	814003.525	819654.613	106.458*	31.194	+2.10	-29.00
C058	814015.660	819695.690	106.458*	31.194	+2.10	-29.00
C059	814027.795	819736.767	106.458*	31.194	+2.10	-29.00
C060	814039.930	819777.844	106.458*	31.194	+2.10	-29.00



KEY PLAN

NOTES

- FOR GENERAL NOTES AND LEGEND REFER TO DRG NO. 211036/SW/5221.
- THE POSITION OF TUNG CHUNG NAVIGATIONAL CHANNEL IS BASED ON HONG KONG ELECTRONIC NAVIGATIONAL CHART (ENC) ISSUED BY HYDROGRAPHIC OFFICE OF THE MARINE DEPARTMENT, HKSAR.

Rev	Description	By	Date
-	FOR CONSTRUCTION	TL	11/11

Consultant
ARUP 奧雅納工程顧問
 Ove Arup & Partners Hong Kong Limited

Supported By :

- Ecosystems Ltd.
- EDA Marine Ltd.
- Geotechnical Consulting Group (Asia) Ltd.
- Hong Kong Cetacean Research Project
- IntelliBuild Technyx Asia Limited
- Tony Gee and Partners LLP

Contract No. and Title:
 Contract No. HY/2010/02
 Hong Kong-Zhuhai-Macao Bridge
 Hong Kong Boundary Crossing Facilities
 - Reclamation Works

Drawing title
**SEAWALLS S2, S3 AND V1
 CELLULAR STRUCTURE
 SETTING OUT PLAN**

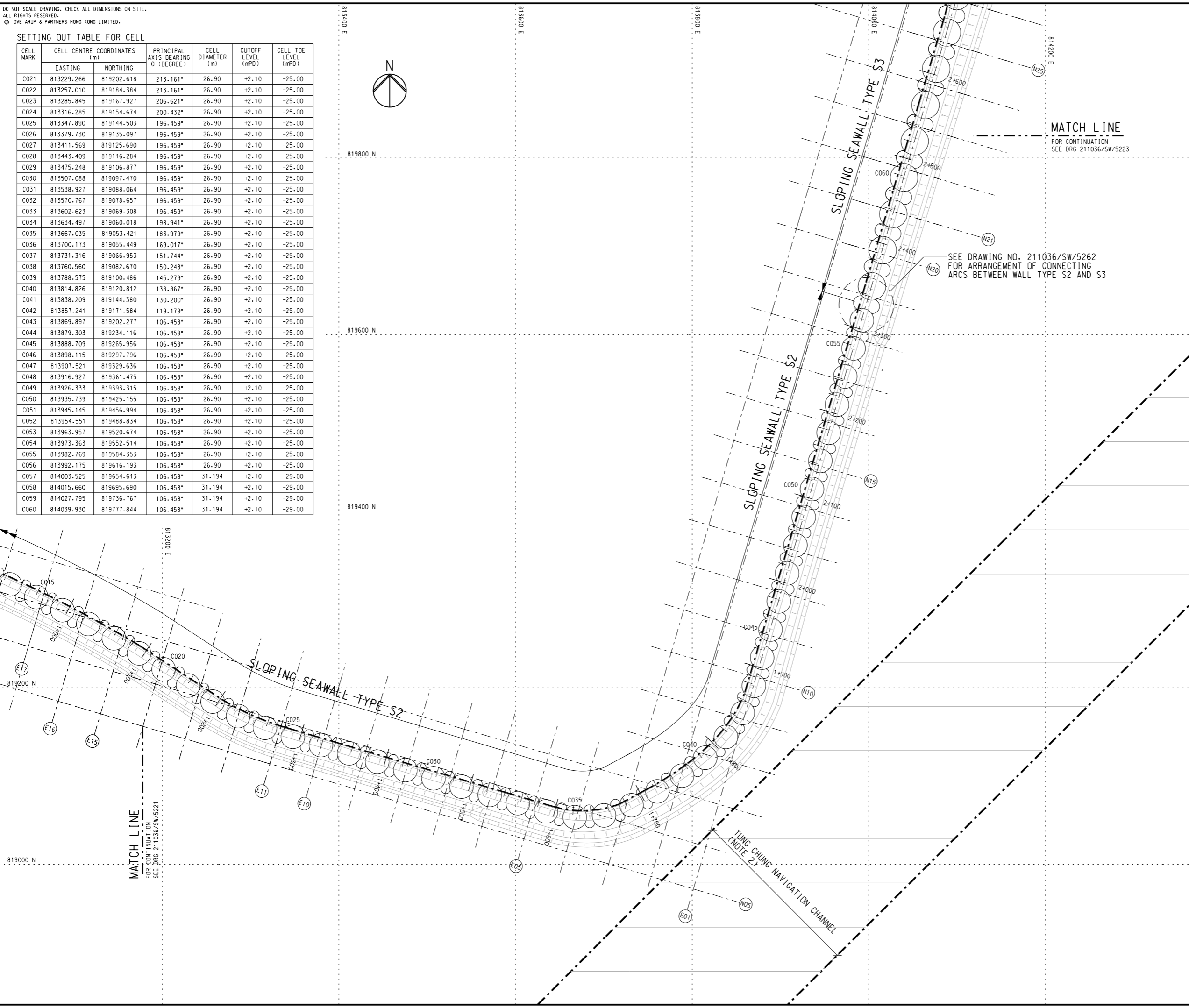
(SHEET 2 OF 4)

Drawing no. 211036/SW/5222		Rev. -	
Drawn RL	Date 06/10	Checked KKY	Approved DML
Scale 1:2000 @A1	1:4000 @A3	Status	WORKING

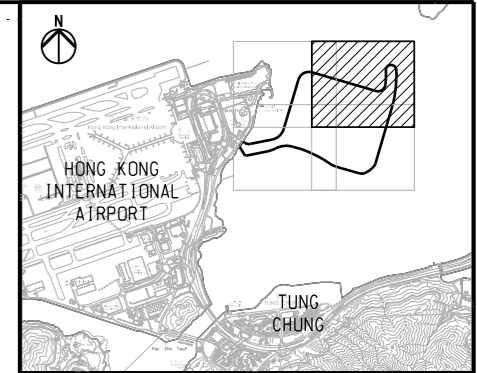
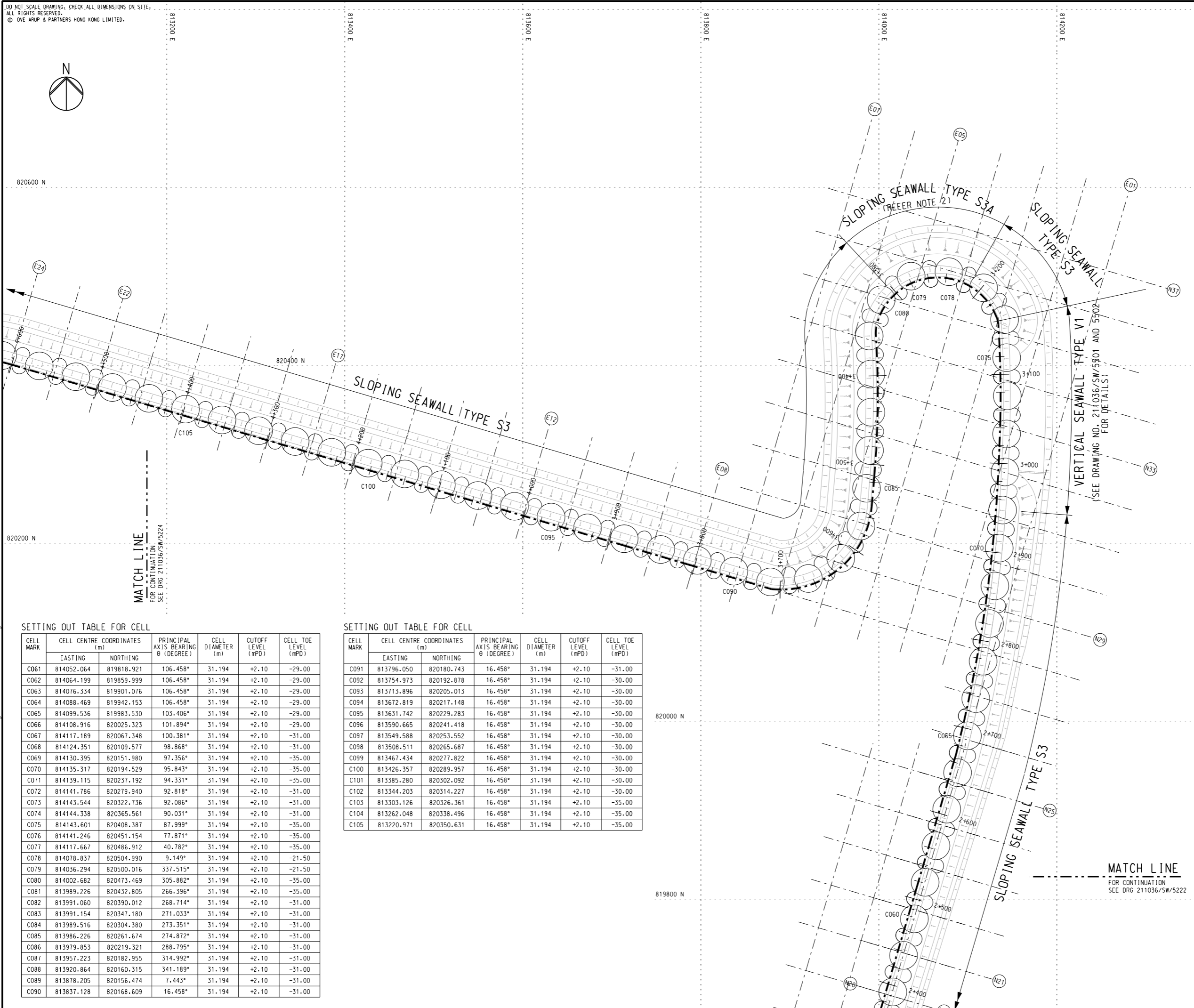
COPYRIGHT RESERVED

路政署
HIGHWAYS DEPARTMENT
 港珠澳大橋香港工程管理局
 Hong Kong - Zhuhai - Macao Bridge
 Hong Kong Project Management Office

Printed by : 12/17/2011
 Filename : J:\211036\RECORD\WORKING\20111130_Contract Drawing_211036_SW_5222.dgn



DO NOT SCALE DRAWING. CHECK ALL DIMENSIONS ON SITE.
ALL RIGHTS RESERVED.
© OVE ARUP & PARTNERS HONG KONG LIMITED.



KEY PLAN

- NOTES**
- FOR GENERAL NOTES AND LEGEND REFER TO DRG NO. 211036/SW/5221.
 - CELLS AND CONNECTING ARCS OF C078 AND C079 ARE ABOVE FUTURE TUEN MUN CHEK LAP KOK LINK TUNNELS. TOP LEVELS OF CELLS AND CONNECTING ARCS NOT LOWER THAN LEVELS SHOWN ON THIS DRAWING.

FOR CONSTRUCTION		TL	11/11
Rev	Description	By	Date

Consultant

ARUP 奧雅納工程顧問 •
Ove Arup & Partners Hong Kong Limited

Supported By :

- Ecosystems Ltd. ○
- EDA Marine Ltd. ○
- Geotechnical Consulting Group (Asia) Ltd. ○
- Hong Kong Cetacean Research Project ○
- IntelBuild Technyx Asia Limited ○
- Tony Gee and Partners LLP ○

Contract No. and Title:
Contract No. HY/2010/02
Hong Kong-Zhuhai-Macao Bridge
Hong Kong Boundary Crossing Facilities
- Reclamation Works

Drawing title
SEAWALLS S2, S3 AND V1
CELLULAR STRUCTURE
SETTING OUT PLAN

(SHEET 3 OF 4)

Drawing no. 211036/SW/5223		Rev. -	
Drawn RL	Date 06/10	Checked KKY	Approved DML
Scale 1:2000 @A1 1:4000 @A3	Status	WORKING	

COPYRIGHT RESERVED

路政署
HIGHWAYS DEPARTMENT
 港珠澳大橋香港工程處
 Hong Kong - Zhuhai - Macao Bridge
 Hong Kong Project Management Office

SETTING OUT TABLE FOR CELL

CELL MARK	CELL CENTRE COORDINATES (m)		PRINCIPAL AXIS BEARING θ (DEGREE)	CELL DIAMETER (m)	CUTOFF LEVEL (mPD)	CELL TOE LEVEL (mPD)
	EASTING	NORTHING				
C061	814052.064	819818.921	106.458*	31.194	+2.10	-29.00
C062	814064.199	819859.999	106.458*	31.194	+2.10	-29.00
C063	814076.334	819901.076	106.458*	31.194	+2.10	-29.00
C064	814088.469	819942.153	106.458*	31.194	+2.10	-29.00
C065	814099.536	819983.530	103.406*	31.194	+2.10	-29.00
C066	814108.916	820025.323	101.894*	31.194	+2.10	-29.00
C067	814117.189	820067.348	100.381*	31.194	+2.10	-31.00
C068	814124.351	820109.577	98.868*	31.194	+2.10	-31.00
C069	814130.395	820151.980	97.356*	31.194	+2.10	-35.00
C070	814135.317	820194.529	95.843*	31.194	+2.10	-35.00
C071	814139.115	820237.192	94.331*	31.194	+2.10	-35.00
C072	814141.786	820279.940	92.818*	31.194	+2.10	-31.00
C073	814143.544	820322.736	92.086*	31.194	+2.10	-31.00
C074	814144.338	820365.561	90.031*	31.194	+2.10	-31.00
C075	814143.601	820408.387	87.999*	31.194	+2.10	-35.00
C076	814141.246	820451.154	77.871*	31.194	+2.10	-35.00
C077	814117.667	820486.912	40.782*	31.194	+2.10	-35.00
C078	814078.837	820504.990	9.149*	31.194	+2.10	-21.50
C079	814036.294	820500.016	337.515*	31.194	+2.10	-21.50
C080	814002.682	820473.469	305.882*	31.194	+2.10	-35.00
C081	813989.226	820432.805	266.396*	31.194	+2.10	-35.00
C082	813991.060	820390.012	268.714*	31.194	+2.10	-31.00
C083	813991.154	820347.180	271.033*	31.194	+2.10	-31.00
C084	813989.516	820304.380	273.351*	31.194	+2.10	-31.00
C085	813986.226	820261.674	274.872*	31.194	+2.10	-31.00
C086	813979.853	820219.321	288.795*	31.194	+2.10	-31.00
C087	813957.223	820182.955	314.992*	31.194	+2.10	-31.00
C088	813920.864	820160.315	341.189*	31.194	+2.10	-31.00
C089	813878.205	820156.474	7.443*	31.194	+2.10	-31.00
C090	813837.128	820168.609	16.458*	31.194	+2.10	-31.00

SETTING OUT TABLE FOR CELL

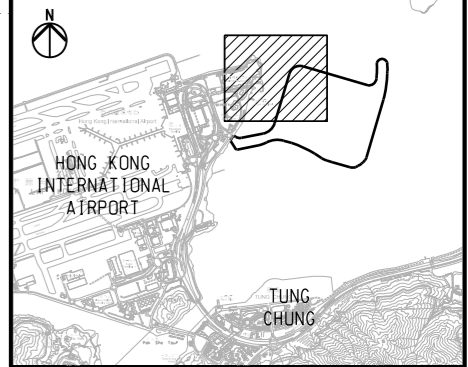
CELL MARK	CELL CENTRE COORDINATES (m)		PRINCIPAL AXIS BEARING θ (DEGREE)	CELL DIAMETER (m)	CUTOFF LEVEL (mPD)	CELL TOE LEVEL (mPD)
	EASTING	NORTHING				
C091	813796.050	820180.743	16.458*	31.194	+2.10	-31.00
C092	813754.973	820192.878	16.458*	31.194	+2.10	-30.00
C093	813713.896	820205.013	16.458*	31.194	+2.10	-30.00
C094	813672.819	820217.148	16.458*	31.194	+2.10	-30.00
C095	813631.742	820229.283	16.458*	31.194	+2.10	-30.00
C096	813590.665	820241.418	16.458*	31.194	+2.10	-30.00
C097	813549.588	820253.552	16.458*	31.194	+2.10	-30.00
C098	813508.511	820265.687	16.458*	31.194	+2.10	-30.00
C099	813467.434	820277.822	16.458*	31.194	+2.10	-30.00
C100	813426.357	820289.957	16.458*	31.194	+2.10	-30.00
C101	813385.280	820302.092	16.458*	31.194	+2.10	-30.00
C102	813344.203	820314.227	16.458*	31.194	+2.10	-30.00
C103	813303.126	820326.361	16.458*	31.194	+2.10	-35.00
C104	813262.048	820338.496	16.458*	31.194	+2.10	-35.00
C105	813220.971	820350.631	16.458*	31.194	+2.10	-35.00

Printed by : 12/17/2011
 Filename : J:\211036\RECORD\WORKING\20111130_Contract Drawing_211036_SW_5223.dgn

DO NOT SCALE DRAWING. CHECK ALL DIMENSIONS ON SITE.
ALL RIGHTS RESERVED.
© OVE ARUP & PARTNERS HONG KONG LIMITED.

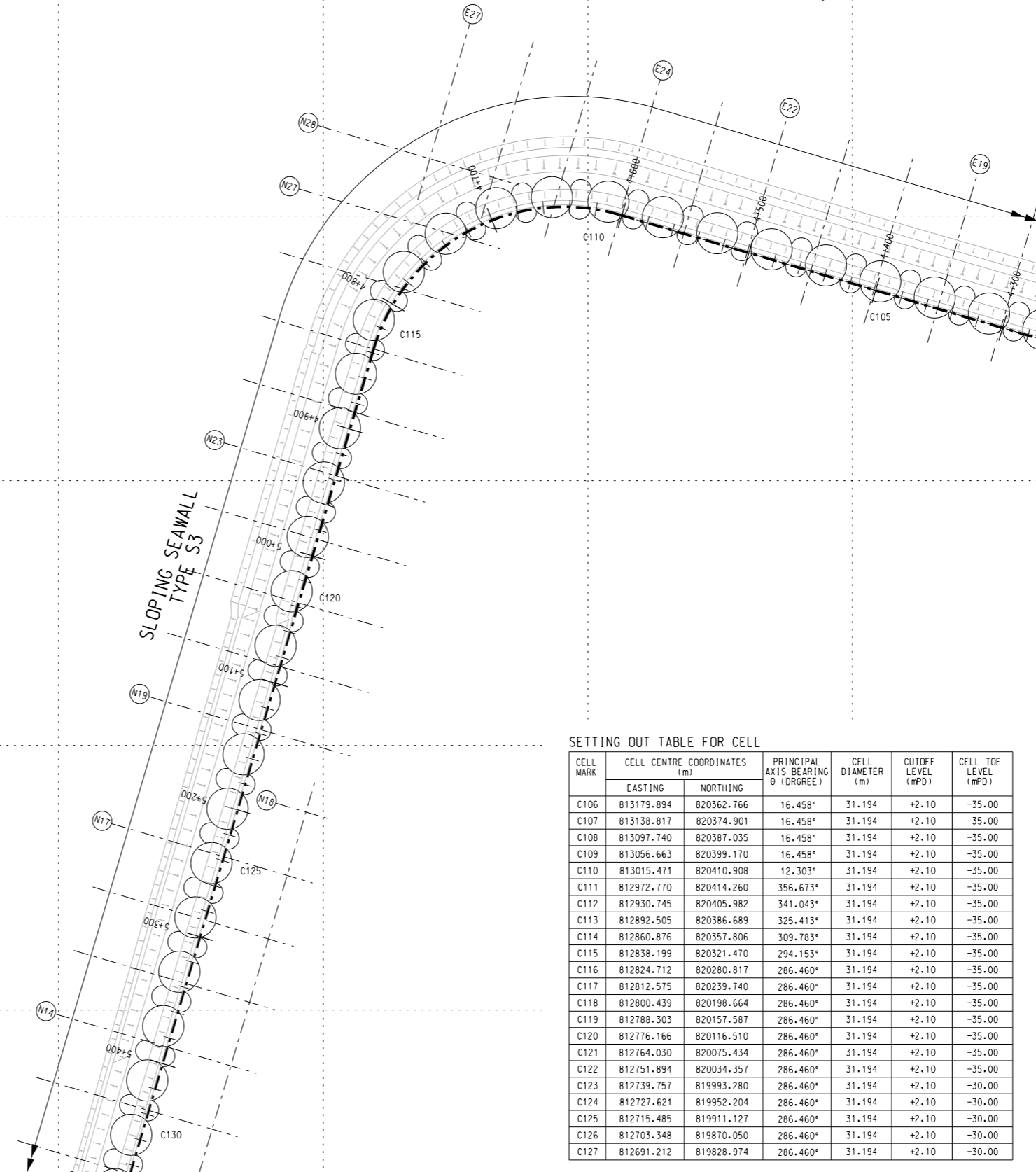
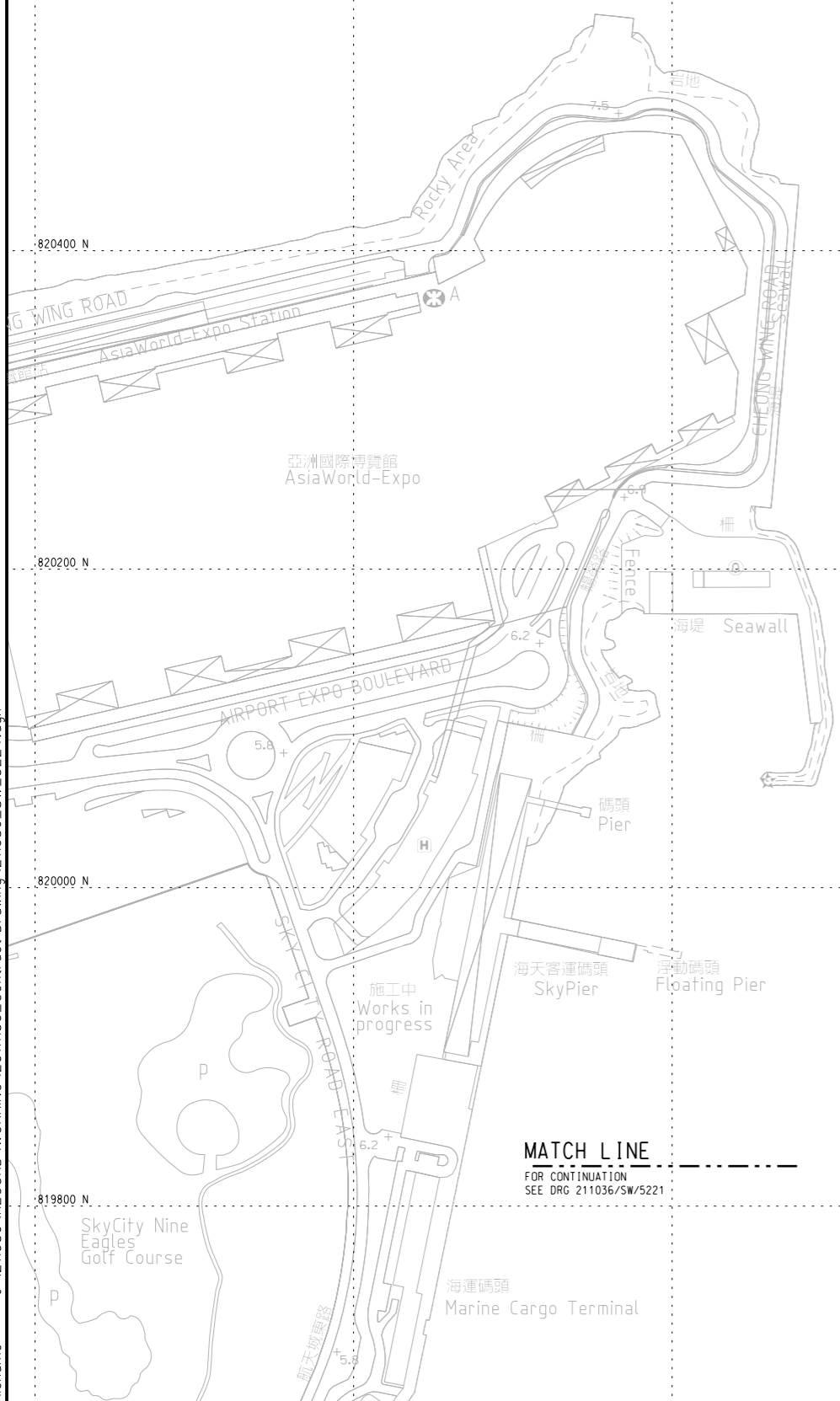


MATCH LINE
FOR CONTINUATION
SEE DRG 211036/SW/5223



KEY PLAN

NOTE
1. FOR GENERAL NOTES AND LEGEND REFER TO DRG NO. 211036/SW/5221.



SETTING OUT TABLE FOR CELL

CELL MARK	CELL CENTRE COORDINATES (m)		PRINCIPAL AXIS BEARING θ (DEGREE)	CELL DIAMETER (m)	CUTOFF LEVEL (mPD)	CELL TOE LEVEL (mPD)
	EASTING	NORTHING				
C106	813179.894	820362.766	16.458°	31.194	+2.10	-35.00
C107	813138.817	820374.901	16.458°	31.194	+2.10	-35.00
C108	813097.740	820387.035	16.458°	31.194	+2.10	-35.00
C109	813056.663	820399.170	16.458°	31.194	+2.10	-35.00
C110	813015.471	820410.908	12.303°	31.194	+2.10	-35.00
C111	812972.770	820414.260	356.673°	31.194	+2.10	-35.00
C112	812930.745	820405.982	341.043°	31.194	+2.10	-35.00
C113	812892.505	820386.689	325.413°	31.194	+2.10	-35.00
C114	812860.876	820357.806	309.783°	31.194	+2.10	-35.00
C115	812838.199	820321.470	294.153°	31.194	+2.10	-35.00
C116	812824.712	820280.817	286.460°	31.194	+2.10	-35.00
C117	812812.575	820239.740	286.460°	31.194	+2.10	-35.00
C118	812800.439	820198.664	286.460°	31.194	+2.10	-35.00
C119	812788.303	820157.587	286.460°	31.194	+2.10	-35.00
C120	812776.166	820116.510	286.460°	31.194	+2.10	-35.00
C121	812764.030	820075.434	286.460°	31.194	+2.10	-35.00
C122	812751.894	820034.357	286.460°	31.194	+2.10	-35.00
C123	812739.757	819993.280	286.460°	31.194	+2.10	-30.00
C124	812727.621	819952.204	286.460°	31.194	+2.10	-30.00
C125	812715.485	819911.127	286.460°	31.194	+2.10	-30.00
C126	812703.348	819870.050	286.460°	31.194	+2.10	-30.00
C127	812691.212	819828.974	286.460°	31.194	+2.10	-30.00

MATCH LINE
FOR CONTINUATION
SEE DRG 211036/SW/5221

Rev	Description	By	Date
-	FOR CONSTRUCTION	TL	11/11

Consultant
ARUP 奧雅納工程顧問
Supported By : Ecosystems Ltd. O
EDA Marine Ltd. O
Geotechnical Consulting Group (Asia) Ltd. O
Hong Kong Cetacean Research Project O
IntelliBuild Technyx Asia Limited O
Tony Gee and Partners LLP O

Contract No. and Title:
Contract No. HY/2010/02
Hong Kong-Zhuhai-Macao Bridge
Hong Kong Boundary Crossing Facilities
- Reclamation Works

Drawing title
**SEAWALLS S2, S3 AND V1
CELLULAR STRUCTURE
SETTING OUT PLAN**

(SHEET 4 OF 4)

Drawing no. 211036/SW/5224		Rev. -	
Drawn RL	Date 06/10	Checked KKY	Approved DML
Scale 1:2000 @A1 1:4000 @A3		Status WORKING	

COPYRIGHT RESERVED
路政署 HIGHWAYS DEPARTMENT
港珠澳大橋香港工程管理局
Hong Kong - Zhuhai - Macao Bridge
Hong Kong Project Management Office

Printed by : 12/17/2011
Filename : J:\211036\RECORD\WORKING\20111130_Contract Drawing_211036_SW_5224.dgn