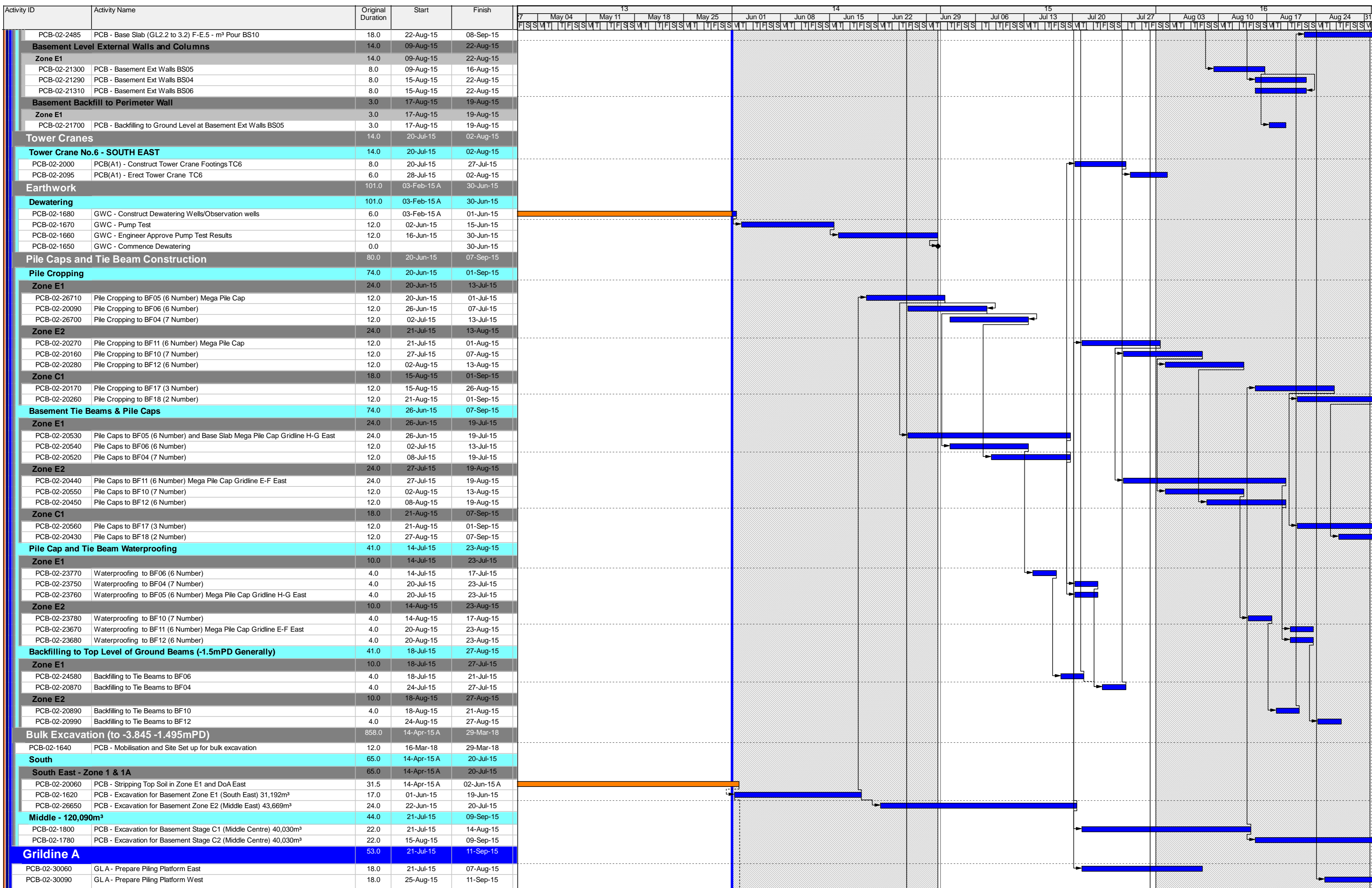


Activity ID	Activity Name	Original Duration	Start	Finish	Gantt Chart																														
					7	May 04	May 11	May 18	May 25	Jun 01	Jun 08	Jun 15	Jun 22	Jun 29	Jul 06	Jul 13	Jul 20	Jul 27	Aug 03	Aug 10	Aug 17	Aug 24	31												
<b>HY/2013/01 HKZMB HKBCF - PCB - Initial 3MRP - May 2015</b>					[Gantt Chart Grid]																														
<b>CONSTRUCTION</b>					[Gantt Chart Grid]																														
<b>Passenger Clearance Building</b>					[Gantt Chart Grid]																														
<b>Piling</b>					[Gantt Chart Grid]																														
<b>HY/2013/01 HKZMB HKBCF - CHUN WO PILING UPDATE - MAY5</b>					[Gantt Chart Grid]																														
<b>BORED PILING</b>					[Gantt Chart Grid]																														
<b>Sam Wo Contractor</b>					[Gantt Chart Grid]																														
<b>PLANT F1 - 1.5m pile use 2.5 casing at Drop off area and 2.0m Pile Use 3.0m Casing</b>					[Gantt Chart Grid]																														
PCBCW-0450 DC38 (DS220)					[Gantt Chart Grid]																														
<b>Box Culvert Piles (22 no)</b>					[Gantt Chart Grid]																														
PCB-XX-21350 BC-BP21					[Gantt Chart Grid]																														
PCB-XX-21360 BC-BP3					[Gantt Chart Grid]																														
PCB-XX-21370 BC-BP15					[Gantt Chart Grid]																														
PCB-XX-21400 Complete Pile Testing to Box Culvert East					[Gantt Chart Grid]																														
<b>HY/2013/01 HKZMB HKBCF - TYSAN PILING UPDATE - MAY5</b>					[Gantt Chart Grid]																														
<b>1st Group</b>					[Gantt Chart Grid]																														
PCB-TS-0220 Box Culvert (A1 area only) - BC38					[Gantt Chart Grid]																														
PCB-TS-0420 Box Culvert (A1 area only) - BC37					[Gantt Chart Grid]																														
<b>2nd Group</b>					[Gantt Chart Grid]																														
PCB-TS-1630 Box Culvert (A1 area only) - BC32					[Gantt Chart Grid]																														
PCB-TS-0300 Box Culvert (A1 area only) - BC34					[Gantt Chart Grid]																														
PCB-TS-1620 Box Culvert (A1 area only) - BC35					[Gantt Chart Grid]																														
<b>3rd Group</b>					[Gantt Chart Grid]																														
PCB-TS-0380 BP90					[Gantt Chart Grid]																														
PCB-TS-2010 Box Culvert (A1 Area only) - BC42					[Gantt Chart Grid]																														
PCB-TS-0390 Box Culvert (A1 Area only) - BC30					[Gantt Chart Grid]																														
<b>4th Group</b>					[Gantt Chart Grid]																														
PCB-TS-1640 Box Culvert (A1 area only) - BC31					[Gantt Chart Grid]																														
PCB-TS-0310 Box Culvert (A1 area only) - BC33					[Gantt Chart Grid]																														
<b>5th Group</b>					[Gantt Chart Grid]																														
PCB-TS-0550 CCBP15					[Gantt Chart Grid]																														
<b>6th Group</b>					[Gantt Chart Grid]																														
PCB-TS-0630 BP11					[Gantt Chart Grid]																														
PCB-TS-0400 Box Culvert (A1 Area only) - BC29					[Gantt Chart Grid]																														
PCB-TS-2000 Box Culvert (A1 Area only) - BC41					[Gantt Chart Grid]																														
<b>7th Group</b>					[Gantt Chart Grid]																														
PCB-TS-1960 BP45					[Gantt Chart Grid]																														
<b>8th Group</b>					[Gantt Chart Grid]																														
PCB-TS-0800 BP46					[Gantt Chart Grid]																														
<b>9th Group</b>					[Gantt Chart Grid]																														
PCB-TS-0870 BP71					[Gantt Chart Grid]																														
<b>13th Group</b>					[Gantt Chart Grid]																														
PCB-TS-1140 BP86					[Gantt Chart Grid]																														
PCB-TS-1120 BP77					[Gantt Chart Grid]																														
<b>17th Group</b>					[Gantt Chart Grid]																														
PCB-TS-1770 Northern Footbridge (Portion A1) N1-2-2					[Gantt Chart Grid]																														
PCB-TS-1800 Box Culvert (A1 area only) - BC24					[Gantt Chart Grid]																														
PCB-TS-1790 Box Culvert (A1 area only) - BC25					[Gantt Chart Grid]																														
PCB-TS-1780 Box Culvert (A1 area only) - BC26					[Gantt Chart Grid]																														
PCB-TS-1810 Box Culvert (A1 area only) - BC23					[Gantt Chart Grid]																														
<b>18th Group</b>					[Gantt Chart Grid]																														
PCB-TS-1970 Box Culvert (A1 area only) - BC28					[Gantt Chart Grid]																														
PCB-TS-1860 Box Culvert (A1 area only) - BC27					[Gantt Chart Grid]																														
PCB-TS-1980 Box Culvert (A1 area only) - BC39					[Gantt Chart Grid]																														
<b>19th Group</b>					[Gantt Chart Grid]																														
PCB-TS-1460 Northern Footbridge (Portion A1) N3-2-1					[Gantt Chart Grid]																														
PCB-TS-1470 Northern Footbridge (Portion A1) N3-2-2					[Gantt Chart Grid]																														
PCB-TS-1490 Northern Footbridge (Portion A1) N4-2-2					[Gantt Chart Grid]																														
PCB-TS-1480 Northern Footbridge (Portion A1) N4-2-1					[Gantt Chart Grid]																														
<b>20th Group</b>					[Gantt Chart Grid]																														
PCB-TS-1510 Installation of Bored Piles (20th group - 2.0m dia. X 2 nos.- Pile No.CBP18)					[Gantt Chart Grid]																														
PCB-TS-1520 BP21					[Gantt Chart Grid]																														
<b>Sub-Structure</b>					[Gantt Chart Grid]																														
<b>Basement Level</b>					[Gantt Chart Grid]																														
<b>Basement Slabs</b>					[Gantt Chart Grid]																														
<b>Zone E1</b>					[Gantt Chart Grid]																														
PCB-02-21070 PCB - Base Slab (GL0.2 to 1.2) H-G - m³ BS06					[Gantt Chart Grid]																														
PCB-02-2230 PCB - Base Slab (GL0.2 to 1.2) H-G - m³ BS04					[Gantt Chart Grid]																														
<b>Zone E2</b>					[Gantt Chart Grid]																														
PCB-02-21070 PCB - Base Slab (GL0.2 to 1.2) H-G - m³ BS06					[Gantt Chart Grid]																														
PCB-02-2230 PCB - Base Slab (GL0.2 to 1.2) H-G - m³ BS04					[Gantt Chart Grid]																														

- █ Actual Work
- █ Remaining Work
- █ Critical Remaining Work
- ◆ Milestone

THREE MONTH ROLLING PROGRAMME

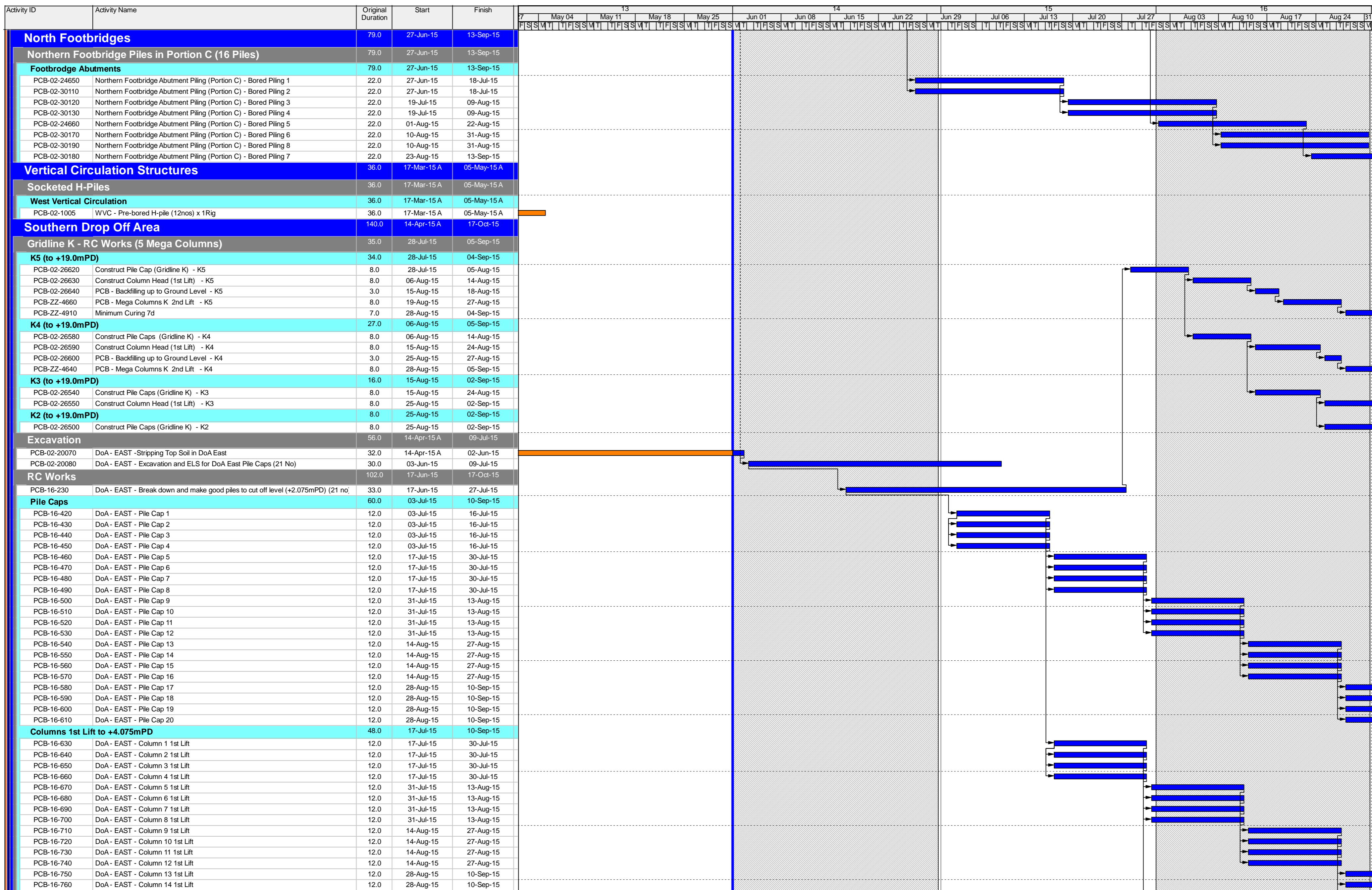
Date	Revision	Checked	Approved
01-Jun-15	3 Month Rolling Programme - 1st June 2015	SGJ	



Actual Work  
 Remaining Work  
 Critical Remaining Work  
 Milestone

THREE MONTH ROLLING PROGRAMME

Date	Revision	Checked	Approved
01-Jun-15	3 Month Rolling Programme - 1st June 2015	SGJ	



THREE MONTH ROLLING PROGRAMME

- Actual Work
- Remaining Work
- Critical Remaining Work
- Milestone

Date	Revision	Checked	Approved
01-Jun-15	3 Month Rolling Programme - 1st June 2015	SGJ	

