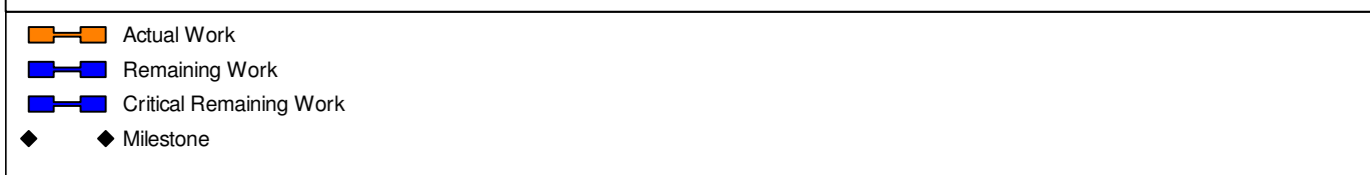
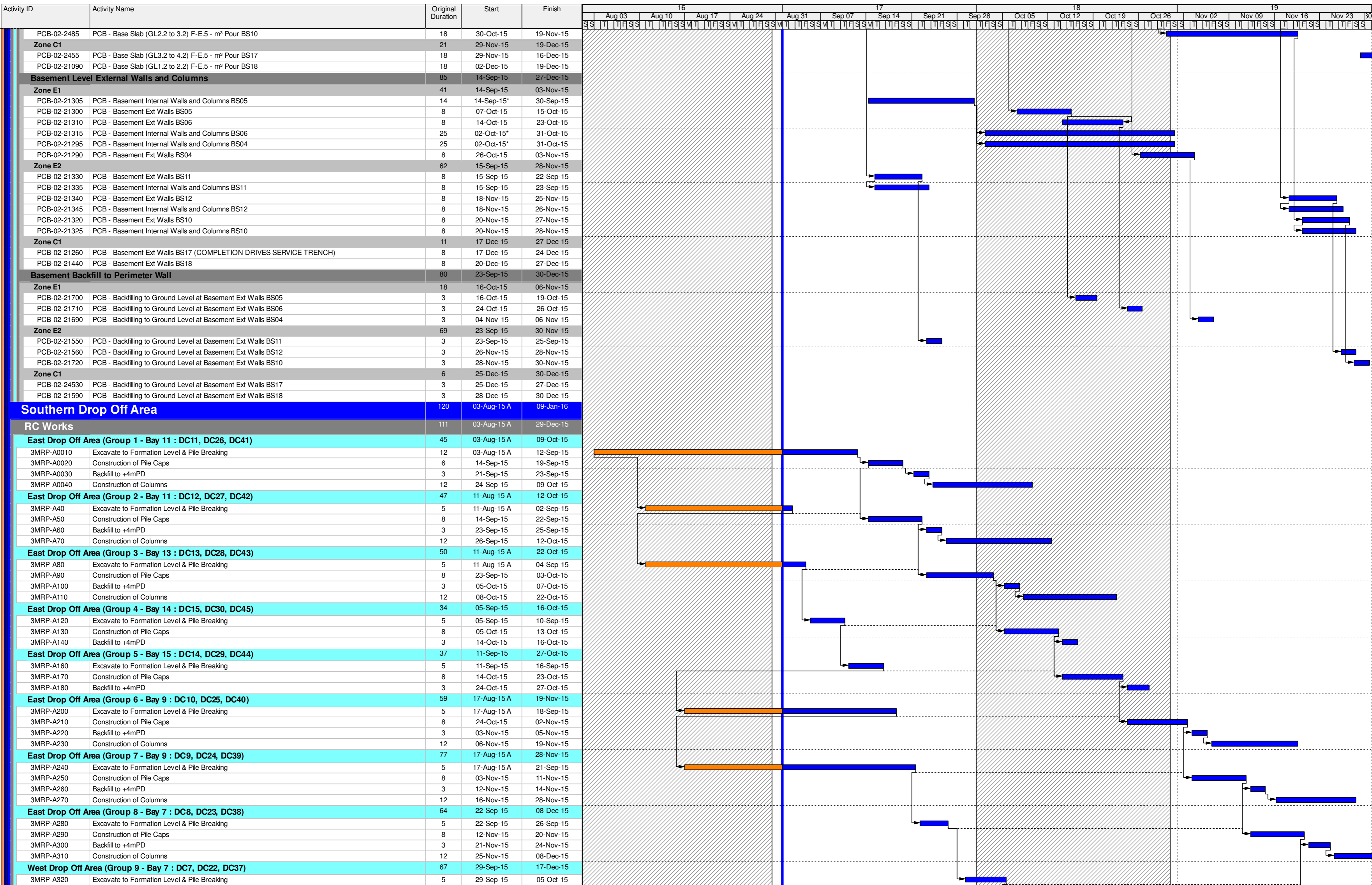


Activity ID	Activity Name	Original Duration	Start	Finish	16							17							18							19						
					Aug 03	Aug 10	Aug 17	Aug 24	Aug 31	Sep 07	Sep 14	Sep 21	Sep 28	Oct 05	Oct 12	Oct 19	Oct 26	Nov 02	Nov 09	Nov 16	Nov 23	Nov 30										
HY/2013/01 HKZMB HKBCF - PCB - 3MRP - August 2015 (Sep Onwards)					[Gantt chart grid with activity bars]																											
CONSTRUCTION					[Gantt chart grid with activity bars]																											
Passenger Clearance Building					[Gantt chart grid with activity bars]																											
Piling					[Gantt chart grid with activity bars]																											
HY/2013/01 HKZMB HKBCF - Bored Piling					[Gantt chart grid with activity bars]																											
Pile Testing					[Gantt chart grid with activity bars]																											
PCB-PT-00010 Pile Testing					[Gantt chart grid with activity bars]																											
Sub-Structure					[Gantt chart grid with activity bars]																											
Basement Level					[Gantt chart grid with activity bars]																											
Tower Cranes					[Gantt chart grid with activity bars]																											
Tower Crane No.6 - SOUTH EAST					[Gantt chart grid with activity bars]																											
PCB-02-2000 PCB(A1) - Construct Tower Crane Footings TC6					[Gantt chart grid with activity bars]																											
PCB-02-2095 PCB(A1) - Erect Tower Crane TC6					[Gantt chart grid with activity bars]																											
Bulk Excavation (to -3.845 -1.495mPD)					[Gantt chart grid with activity bars]																											
South					[Gantt chart grid with activity bars]																											
South West - Zone 2 & 2A					[Gantt chart grid with activity bars]																											
PCB-02-1630 PCB - Excavation for Basement Zone W1 (South West) 40,030m³					[Gantt chart grid with activity bars]																											
Middle - 120,090m³					[Gantt chart grid with activity bars]																											
PCB-02-1770 PCB - Excavation for Basement Stage C1 (Middle Centre) to -1.495mPD Only					[Gantt chart grid with activity bars]																											
PCB-02-1780 PCB - Excavation for Basement Stage C2 (Middle Centre) to -1.495mPD Only					[Gantt chart grid with activity bars]																											
PCB-02-1810 PCB - Excavation for Basement Stage C1 (Middle Centre) below -1.495 to -3.8mPD (for beams)					[Gantt chart grid with activity bars]																											
PCB-02-1840 PCB - Excavation for Basement Stage C2 (Middle Centre) below -1.495 to -3.8mPD (for beams)					[Gantt chart grid with activity bars]																											
Pile Caps and Tie Beam Construction					[Gantt chart grid with activity bars]																											
Pile Cropping and Blinding					[Gantt chart grid with activity bars]																											
Zone E1					[Gantt chart grid with activity bars]																											
PCB-02-20090 Pile Cropping and Blinding to BF06 (6 Number)					[Gantt chart grid with activity bars]																											
PCB-02-26700 Pile Cropping and Blinding to BF04 (7 Number)					[Gantt chart grid with activity bars]																											
Zone E2					[Gantt chart grid with activity bars]																											
PCB-02-20270 Pile Cropping and Blinding to BF11 (6 Number) Mega Pile Cap					[Gantt chart grid with activity bars]																											
PCB-02-20160 Pile Cropping and Blinding to BF10 (7 Number)					[Gantt chart grid with activity bars]																											
PCB-02-20280 Pile Cropping and Blinding to BF12 (6 Number)					[Gantt chart grid with activity bars]																											
Zone W1					[Gantt chart grid with activity bars]																											
PCB-02-26680 Pile Cropping and Blinding to BF02 (6 Number) Mega Pile Cap					[Gantt chart grid with activity bars]																											
Zone C1					[Gantt chart grid with activity bars]																											
PCB-02-20170 Pile Cropping and Blinding to BF17 (3 Number)					[Gantt chart grid with activity bars]																											
PCB-02-20260 Pile Cropping and Blinding to BF18 (2 Number)					[Gantt chart grid with activity bars]																											
Zone C2					[Gantt chart grid with activity bars]																											
PCB-02-20180 Pile Cropping and Blinding to BF15 (10 Number)					[Gantt chart grid with activity bars]																											
PCB-02-20240 Pile Cropping and Blinding to BF16 (8 Number)					[Gantt chart grid with activity bars]																											
Basement Tie Beams & Pile Caps					[Gantt chart grid with activity bars]																											
Zone E1					[Gantt chart grid with activity bars]																											
PCB-02-20540 Pile Caps to BF06 (6 Number)					[Gantt chart grid with activity bars]																											
PCB-02-20520 Pile Caps to BF04 (7 Number)					[Gantt chart grid with activity bars]																											
Zone E2					[Gantt chart grid with activity bars]																											
PCB-02-20440 Pile Caps to BF11 (6 Number) Mega Pile Cap Gridline E-F East					[Gantt chart grid with activity bars]																											
PCB-02-20550 Pile Caps to BF10 (7 Number)					[Gantt chart grid with activity bars]																											
PCB-02-20450 Pile Caps to BF12 (6 Number)					[Gantt chart grid with activity bars]																											
Zone C1					[Gantt chart grid with activity bars]																											
PCB-02-20560 Pile Caps to BF17 (3 Number)					[Gantt chart grid with activity bars]																											
PCB-02-20430 Pile Caps to BF18 (2 Number)					[Gantt chart grid with activity bars]																											
Pile Cap and Tie Beam Waterproofing					[Gantt chart grid with activity bars]																											
Zone E1					[Gantt chart grid with activity bars]																											
PCB-02-23770 Waterproofing to BF06 (6 Number)					[Gantt chart grid with activity bars]																											
PCB-02-23750 Waterproofing to BF04 (7 Number)					[Gantt chart grid with activity bars]																											
Zone E2					[Gantt chart grid with activity bars]																											
PCB-02-23670 Waterproofing to BF11 (6 Number) Mega Pile Cap Gridline E-F East					[Gantt chart grid with activity bars]																											
PCB-02-23780 Waterproofing to BF10 (7 Number)					[Gantt chart grid with activity bars]																											
PCB-02-23680 Waterproofing to BF12 (6 Number)					[Gantt chart grid with activity bars]																											
Backfilling to Top Level of Ground Beams (-1.5mPD Generally)					[Gantt chart grid with activity bars]																											
Zone E1					[Gantt chart grid with activity bars]																											
PCB-02-24580 Backfilling to Tie Beams to BF06					[Gantt chart grid with activity bars]																											
PCB-02-20870 Backfilling to Tie Beams to BF04					[Gantt chart grid with activity bars]																											
Zone E2					[Gantt chart grid with activity bars]																											
PCB-02-20890 Backfilling to Tie Beams to BF10					[Gantt chart grid with activity bars]																											
PCB-02-20990 Backfilling to Tie Beams to BF12					[Gantt chart grid with activity bars]																											
Basement Slabs					[Gantt chart grid with activity bars]																											
Zone E1					[Gantt chart grid with activity bars]																											
PCB-02-21070 PCB - Base Slab (GL0.2 to 1.2) H-G - m³ BS06					[Gantt chart grid with activity bars]																											
PCB-02-2230 PCB - Base Slab (GL0.2 to 1.2) H-G - m³ BS04					[Gantt chart grid with activity bars]																											
Zone E2					[Gantt chart grid with activity bars]																											
PCB-02-2540 PCB - Base Slab (GL0.2 to 1.2) F-E-5 - m³ Pour BS12					[Gantt chart grid with activity bars]																											

- █ Actual Work
- █ Remaining Work
- █ Critical Remaining Work
- ◆ Milestone

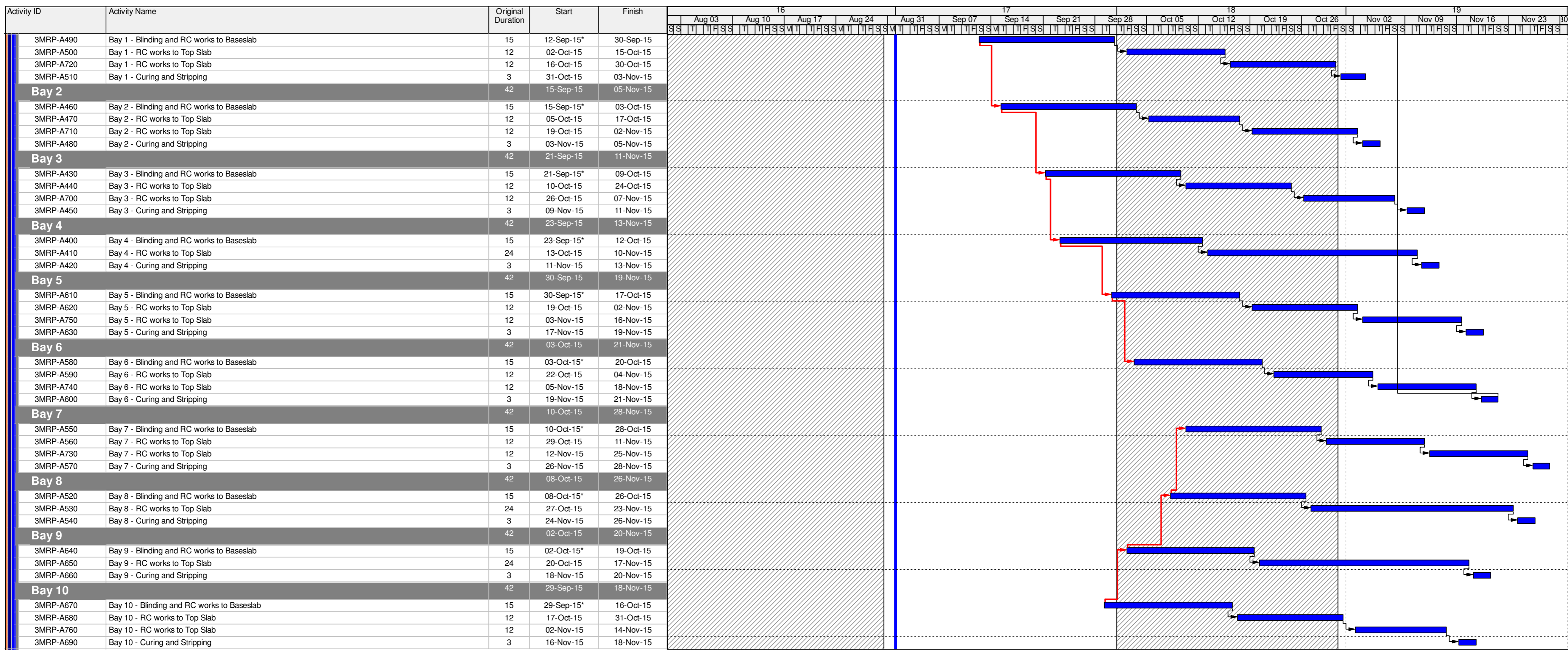
THREE MONTH ROLLING PROGRAMME

Date	Revision	Checked	Approved
01-Sep-15	3 Month Rolling Programme - 1st September 2015	SGJ	



THREE MONTH ROLLING PROGRAMME

Date	Revision	Checked	Approved
01-Sep-15	3 Month Rolling Programme - 1st September 2015	SGJ	



- █ Actual Work
- █ Remaining Work
- █ Critical Remaining Work
- ◆ Milestone

THREE MONTH ROLLING PROGRAMME

Date	Revision	Checked	Approved
01-Sep-15	3 Month Rolling Programme - 1st September 2015	SGJ	