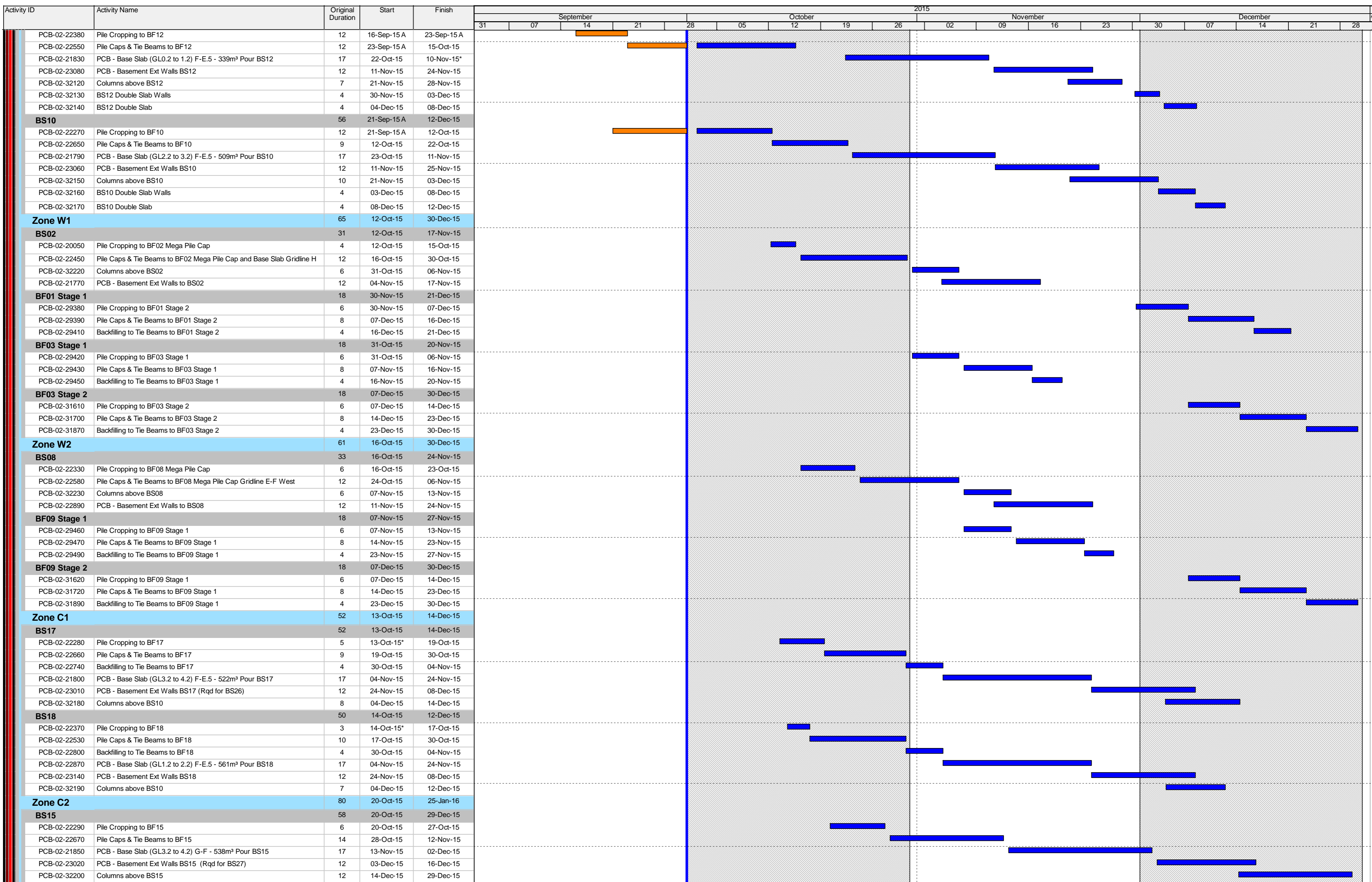


Activity ID	Activity Name	Original Duration	Start	Finish	2015																				
					September				October				November												
					31	07	14	21	28	05	12	19	26	02	09	16	23	30	07	14	21	28			
<b>HY/2013/01 HKZMB HKBCF - PCB - 3MRP - Sep</b>		194	02-Jul-15 A	28-Apr-16																					
<b>CONSTRUCTION</b>		194	02-Jul-15 A	28-Apr-16																					
<b>Passenger Clearance Building</b>		131	02-Jul-15 A	27-Feb-16																					
<b>Earthwork</b>		106	20-Aug-15 A	07-Dec-15																					
<b>Bulk Excavation (to -3.845 -1.495mPD)</b>		106	20-Aug-15 A	07-Dec-15																					
<b>South - 161230m³</b>		69	08-Sep-15 A	07-Dec-15																					
<b>West - 86,369m³</b>		69	08-Sep-15 A	07-Dec-15																					
PCB-02-29610	PCB - Removal of A0 Bench	14	15-Sep-15 A	02-Oct-15																					
PCB-02-29620	PCB - Removal of B0 Bench	14	22-Sep-15 A	07-Oct-15																					
<b>A0</b>		49	08-Sep-15 A	30-Nov-15																					
PCB-02-29320	PCB - Excavation for Basement Zone A1	12	08-Sep-15 A	15-Oct-15																					
PCB-02-29330	PCB - Excavation for Basement Zone A2	12	16-Nov-15	30-Nov-15																					
<b>B0</b>		45	18-Sep-15 A	07-Dec-15																					
PCB-02-29350	PCB - Excavation for Basement Zone B1	12	18-Sep-15 A	23-Oct-15																					
PCB-02-29360	PCB - Excavation for Basement Zone B2	12	23-Nov-15	07-Dec-15																					
<b>Centre - 120,090m³</b>		93	20-Aug-15 A	27-Oct-15																					
<b>Centre - 120,090m³</b>		93	20-Aug-15 A	27-Oct-15																					
PCB-02-29600	PCB - Excavation for Basement Zone C2 to -1.8mPD	15	31-Aug-15 A	15-Sep-15 A																					
PCB-02-1780	PCB - Excavation for Basement Zone C1 to -3.84mPD	35	20-Aug-15 A	23-Sep-15 A																					
PCB-02-29870	PCB - Excavation for Basement Zone C2 to -3.84mPD	20	15-Sep-15 A	27-Oct-15																					
<b>North - 94,824m³</b>		14	14-Nov-15	30-Nov-15																					
<b>East - 47,412m³</b>		14	14-Nov-15	30-Nov-15																					
PCB-02-31580	PCB - Excavation for Basement (23,706m³) Zone E3 East	14	14-Nov-15*	30-Nov-15																					
<b>Pile Caps and Tie Beam Construction</b>		95	02-Jul-15 A	25-Jan-16																					
<b>Basement Tie Beams &amp; Pile Caps</b>		95	02-Jul-15 A	25-Jan-16																					
<b>Zone E1</b>		54	02-Jul-15 A	23-Nov-15																					
<b>BS05</b>		21	02-Jul-15 A	22-Oct-15																					
PCB-02-24400	Waterproofing to BF05 Mega Pile Cap Gridline H-G East	4	22-Jul-15 A	27-Jul-15 A																					
PCB-02-22630	Pile Caps to BF05 and Base Slab Mega Pile Cap Gridline H-G East	12	08-Jul-15 A	28-Jul-15 A																					
PCB-02-22260	Pile Cropping to BF05 Mega Pile Cap	12	02-Jul-15 A	17-Aug-15 A																					
PCB-02-31990	Columns above BS05	12	30-Jul-15 A	26-Sep-15 A																					
PCB-02-23040	BS05 External Wall	12	26-Sep-15 A	10-Oct-15																					
PCB-02-32000	BS05 Double Slab Walls	4	12-Oct-15	15-Oct-15																					
PCB-02-32010	BS05 Double Slab	5	16-Oct-15	22-Oct-15																					
<b>BS04</b>		54	04-Aug-15 A	23-Nov-15																					
PCB-02-22250	Pile Cropping to BF04	12	04-Aug-15 A	17-Aug-15 A																					
PCB-02-22620	Pile Caps & Tie Beams to BF04	12	04-Sep-15 A	22-Sep-15 A																					
PCB-02-24390	Waterproofing to BF04	4	23-Sep-15 A	26-Sep-15 A																					
PCB-02-22720	Backfilling to Tie Beams to BF04	4	29-Sep-15 A	05-Oct-15																					
PCB-02-21980	PCB - Base Slab (GL0.2 to 1.2) H-G - 204m³ Pour BS04	15	06-Oct-15*	23-Oct-15																					
PCB-02-23030	PCB - Basement Ext Walls BS04	12	24-Oct-15	06-Nov-15																					
PCB-02-32030	Columns above BS04	9	04-Nov-15	13-Nov-15																					
PCB-02-32040	BS04 Double Slab Walls	4	14-Nov-15	18-Nov-15																					
PCB-02-32050	BS04 Double Slab	4	19-Nov-15	23-Nov-15																					
<b>BS06</b>		42	03-Aug-15 A	20-Nov-15																					
PCB-02-20090	Pile Cropping to BF06	12	03-Aug-15 A	15-Aug-15 A																					
PCB-02-22640	Pile Caps & Tie Beams to BF06	12	15-Aug-15 A	05-Sep-15 A																					
PCB-02-24410	Waterproofing to BF06	4	24-Aug-15 A	11-Sep-15 A																					
PCB-02-25150	Backfilling to Tie Beams to BF06	4	12-Sep-15 A	05-Oct-15																					
PCB-02-22850	PCB - Base Slab (GL0.2 to 1.2) H-G - 337m³ Pour BS06	15	23-Sep-15 A	13-Oct-15																					
PCB-02-23050	PCB - Basement Ext Walls BS06	18	14-Oct-15	04-Nov-15																					
PCB-02-32060	Columns above BS06	9	02-Nov-15	11-Nov-15																					
PCB-02-32070	BS06 Double Slab Walls	4	12-Nov-15	16-Nov-15																					
PCB-02-32080	BS06 Double Slab	4	17-Nov-15	20-Nov-15																					
<b>Zone E2</b>		64	13-Aug-15 A	12-Dec-15																					
<b>BS11</b>		42	13-Aug-15 A	07-Nov-15																					
PCB-02-20270	Pile Cropping to BF11 Mega Pile Cap	12	13-Aug-15 A	22-Aug-15 A																					
PCB-02-22540	Pile Caps & Tie Beams to BF11 Mega Pile Cap Gridline E-F East	12	24-Aug-15 A	10-Sep-15 A																					
PCB-02-24310	Waterproofing to BF11 Mega Pile Cap Gridline E-F East	4	24-Aug-15 A	18-Sep-15 A																					
PCB-02-32090	Columns above BS11	6	10-Oct-15*	17-Oct-15																					
PCB-02-23070	PCB - Basement Ext Walls BS11	12	14-Oct-15*	29-Oct-15																					
PCB-02-32100	BS11 Double Slab Walls	4	29-Oct-15	03-Nov-15																					
PCB-02-32110	BS11 Double Slab	4	03-Nov-15	07-Nov-15																					
<b>BS12</b>		57	16-Sep-15 A	08-Dec-15																					

- Actual Work
- Remaining Work
- Critical Remaining Work
- ◆ Baseline Milestone
- ◆ Milestone

THREE MONTH ROLLING PROGRAMME

Date	Revision	Checked	Approved
01-Oct-15	THREE MONTH ROLLING PROGRAMME	SGJ	



- Actual Work
- Remaining Work
- Critical Remaining Work
- ◆ Baseline Milestone
- ◆ Milestone

### THREE MONTH ROLLING PROGRAMME

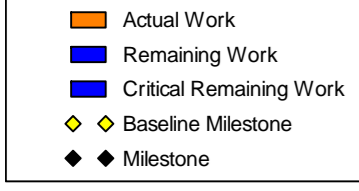
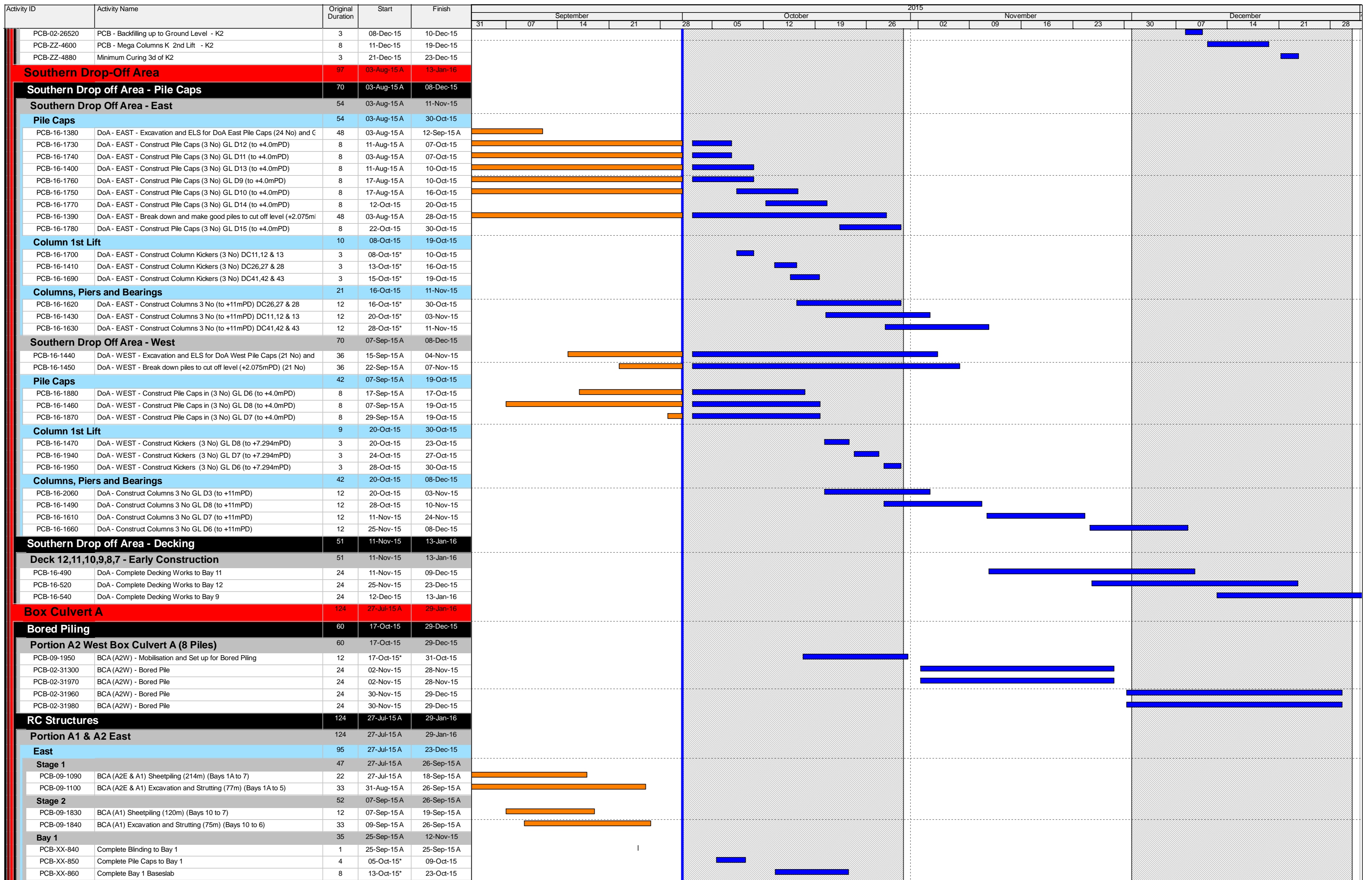
Date	Revision	Checked	Approved
01-Oct-15	THREE MONTH ROLLING PROGRAMME	SGJ	

Activity ID	Activity Name	Original Duration	Start	Finish	2015																	
					September					October					November					December		
					31	07	14	21	28	05	12	19	26	02	09	16	23	30	07	14	21	28
<b>BS16</b>		60	13-Nov-15	25-Jan-16																		
PCB-02-22350	Pile Cropping to BF16	6	13-Nov-15*	19-Nov-15																		
PCB-02-22600	Pile Caps & Tie Beams to BF16	14	20-Nov-15	05-Dec-15																		
PCB-02-22860	PCB - Base Slab (GL4.2 to 5.2) F-E.5 - 565m³ Pour BS16	17	07-Dec-15	28-Dec-15																		
PCB-02-22920	PCB - Basement Ext Walls BS16	12	29-Dec-15	12-Jan-16																		
PCB-02-32210	Columns above BS16	14	09-Jan-16	25-Jan-16																		
<b>Tower Cranes</b>		17	06-Nov-15	25-Nov-15																		
<b>Tower Crane No.4 - SOUTH WEST</b>		6	06-Nov-15	12-Nov-15																		
PCB-02-22080	PCB(A1) - Erect Tower Crane TC4	6	06-Nov-15	12-Nov-15																		
<b>Tower Crane No.5 - SOUTH MIDDLE</b>		6	19-Nov-15	25-Nov-15																		
PCB-02-22050	PCB(A1) - Erect Tower Crane TC5	6	19-Nov-15	25-Nov-15																		
<b>Superstructure</b>		74	24-Nov-15	27-Feb-16																		
<b>Ground Floor Slabs (+5.450mPD)</b>		74	24-Nov-15	27-Feb-16																		
<b>SOUTH - Gridline J-G</b>		38	24-Nov-15	09-Jan-16																		
<b>Suspended Slabs (+5.450mPD)</b>		23	24-Nov-15	19-Dec-15																		
PCB-02-21560	Construct Ground Floor Suspended Slab Pour GS03 - 237m³	23	24-Nov-15	19-Dec-15																		
<b>Cure and Strip Suspended Slabs</b>		15	21-Dec-15	09-Jan-16																		
PCB-02-21570	Cure & Strip Ground Floor Suspended Slab Pour GS03	15	21-Dec-15	09-Jan-16																		
<b>MIDDLE - Gridline G-E</b>		57	12-Dec-15	27-Feb-16																		
<b>Suspended Slabs (+5.450mPD)</b>		57	12-Dec-15	27-Feb-16																		
PCB-02-21410	Construct Ground Floor Suspended Slab Pour GS12 - 215m³	23	12-Dec-15	12-Jan-16																		
PCB-02-21420	Construct Ground Floor Suspended Slab Pour GS13 - 184m³	23	14-Dec-15	13-Jan-16																		
PCB-02-21390	Construct Ground Floor Suspended Slab Pour GS11 - 186m³	23	30-Dec-15	26-Jan-16																		
PCB-02-21400	Construct Ground Floor Suspended Slab Pour GS10 - 200m³	23	26-Jan-16	27-Feb-16																		
<b>Columns to Mezzanine Slab (+10.250mPD)</b>		8	21-Dec-15	31-Dec-15																		
<b>SOUTH - Gridline J-G</b>		8	21-Dec-15	31-Dec-15																		
PCB-02-20730	Construct Columns to Mezz Floor MS04	8	21-Dec-15	31-Dec-15																		
<b>Gridline K</b>		58	06-Aug-15 A	23-Dec-15																		
<b>Gridline K - RC Works (5 Mega Columns)</b>		58	06-Aug-15 A	23-Dec-15																		
<b>K3 (to +19.0mPD)</b>		45	02-Nov-15	23-Dec-15																		
PCB-02-26530	Break Piles to Cut Off Level (+2.08mPD) and Blind - K3	3	02-Nov-15	04-Nov-15																		
PCB-02-26540	Construct Pile Cap (Gridline K) - K3	8	05-Nov-15	13-Nov-15																		
PCB-02-30490	Construct Tie Beams - K3	12	14-Nov-15	27-Nov-15																		
PCB-02-26550	Construct Column Head (1st Lift) - K3	8	28-Nov-15	07-Dec-15																		
PCB-02-26560	PCB - Backfilling up to Ground Level - K3	3	08-Dec-15	10-Dec-15																		
PCB-ZZ-4620	PCB - Mega Columns K 2nd Lift - K3	8	11-Dec-15	19-Dec-15																		
PCB-ZZ-4890	Minimum Curing 3d of K3	3	21-Dec-15	23-Dec-15																		
<b>K4 (to +19.0mPD)</b>		54	06-Aug-15 A	23-Dec-15																		
PCB-02-26570	Break Piles to Cut Off Level (+2.08mPD) and Blind - K4	3	06-Aug-15 A	10-Aug-15 A																		
PCB-02-26580	Construct Pile Cap (Gridline K) - K4	8	27-Oct-15	04-Nov-15																		
PCB-02-30500	Construct Tie Beams - K4	12	05-Nov-15	18-Nov-15																		
PCB-02-26590	Construct Column Head (1st Lift) - K4	8	19-Nov-15	27-Nov-15																		
PCB-02-26600	PCB - Backfilling up to Ground Level - K4	3	28-Nov-15	01-Dec-15																		
PCB-ZZ-4640	PCB - Mega Columns K 2nd Lift - K4	8	02-Dec-15	10-Dec-15																		
PCB-ZZ-4900	Minimum Curing 3d of K4	3	21-Dec-15	23-Dec-15																		
<b>K5 (to +19.0mPD)</b>		58	10-Aug-15 A	23-Dec-15																		
PCB-02-26610	Break Piles to Cut Off Level (+2.08mPD) and Blind - K5	3	10-Aug-15 A	13-Aug-15 A																		
PCB-02-26620	Construct Pile Cap (Gridline K) - K5	8	16-Oct-15*	26-Oct-15																		
PCB-02-30510	Construct Tie Beams - K5	12	27-Oct-15	09-Nov-15																		
PCB-02-26630	Construct Column Head (1st Lift) - K5	8	10-Nov-15	18-Nov-15																		
PCB-02-26640	PCB - Backfilling up to Ground Level - K5	3	19-Nov-15	21-Nov-15																		
PCB-ZZ-4660	PCB - Mega Columns K 2nd Lift - K5	8	23-Nov-15	01-Dec-15																		
PCB-ZZ-4910	Minimum Curing 3d of K5	3	21-Dec-15	23-Dec-15																		
<b>K1 (to +19.0mPD)</b>		45	23-Oct-15	14-Dec-15																		
PCB-02-2120	Break Piles to Cut Off Level (+2.08mPD) and Blind - K1	3	23-Oct-15	26-Oct-15																		
PCB-02-2125	Construct Pile Cap (Gridline K) - K1	8	27-Oct-15	04-Nov-15																		
PCB-02-30520	Construct Tie Beams - K1	12	05-Nov-15	18-Nov-15																		
PCB-02-2185	Construct Column Head (1st Lift) - K1	8	19-Nov-15	27-Nov-15																		
PCB-02-2190	PCB - Backfilling up to Ground Level - K1	3	28-Nov-15	01-Dec-15																		
PCB-ZZ-4110	PCB - Mega Columns K 2nd Lift - K1	8	02-Dec-15	10-Dec-15																		
PCB-ZZ-4870	Minimum Curing 3d of K1	3	11-Dec-15	14-Dec-15																		
<b>K2 (to +19.0mPD)</b>		45	02-Nov-15	23-Dec-15																		
PCB-02-26490	Break Piles to Cut Off Level (+2.08mPD) and Blind - K2	3	02-Nov-15	04-Nov-15																		
PCB-02-26500	Construct Pile Cap (Gridline K) - K2	8	05-Nov-15	13-Nov-15																		
PCB-02-30530	Construct Tie Beams - K2	12	14-Nov-15	27-Nov-15																		
PCB-02-26510	Construct Column Head (1st Lift) - K2	8	28-Nov-15	07-Dec-15																		

- Actual Work
- Remaining Work
- Critical Remaining Work
- Baseline Milestone
- Milestone

**THREE MONTH ROLLING PROGRAMME**

Date	Revision	Checked	Approved
01-Oct-15	THREE MONTH ROLLING PROGRAMME	SGJ	



**THREE MONTH ROLLING PROGRAMME**

Page 4 of 7

Date	Revision	Checked	Approved
01-Oct-15	THREE MONTH ROLLING PROGRAMME	SGJ	

Activity ID	Activity Name	Original Duration	Start	Finish	2015																	
					September					October					November					December		
					31	07	14	21	28	05	12	19	26	02	09	16	23	30	07	14	21	28
PCB-XX-870	Complete wall and Top Slab Bay 1	15	26-Oct-15*	12-Nov-15																		
<b>Bay 2</b>		56	26-Sep-15 A	07-Dec-15																		
PCB-XX-800	Complete Blinding to Bay 2	1	26-Sep-15 A	26-Sep-15 A																		
PCB-XX-810	Complete Pile Caps to Bay 2	3	10-Oct-15*	14-Oct-15																		
PCB-XX-820	Complete Bay 2 Baseslab	9	29-Oct-15*	07-Nov-15																		
PCB-XX-830	Complete wall and Top Slab Bay 2	15	20-Nov-15	07-Dec-15																		
<b>Bay 3</b>		41	29-Sep-15 A	19-Nov-15																		
PCB-XX-790	Complete Blinding to Bay 3	1	29-Sep-15 A	29-Sep-15 A																		
PCB-XX-750	Complete Pile Caps to Bay 3	4	13-Oct-15*	17-Oct-15																		
PCB-XX-760	Complete Bay 3 Baseslab	8	19-Oct-15	28-Oct-15																		
PCB-XX-770	Complete wall and Top Slab Bay 3	15	03-Nov-15*	19-Nov-15																		
<b>Bay 4</b>		47	13-Oct-15	07-Dec-15																		
PCB-XX-780	Complete Blinding to Bay 4	2	13-Oct-15*	15-Oct-15																		
PCB-XX-720	Complete Pile Caps to Bay 4	4	16-Oct-15*	20-Oct-15																		
PCB-XX-730	Complete Bay 4 Baseslab	8	30-Oct-15*	07-Nov-15																		
PCB-XX-740	Complete wall and Top Slab Bay 4	15	20-Nov-15	07-Dec-15																		
<b>Bay 5</b>		33	17-Oct-15	25-Nov-15																		
PCB-XX-0610	Complete Blinding to Bay 5	1	17-Oct-15*	19-Oct-15																		
PCB-XX-0620	Complete Pile Caps to Bay 5	3	20-Oct-15*	24-Oct-15																		
PCB-XX-0630	Complete Bay 5 Baseslab	7	27-Oct-15*	04-Nov-15																		
PCB-XX-0640	Complete wall and Top Slab Bay 5	15	09-Nov-15*	25-Nov-15																		
<b>Bay 6</b>		49	16-Oct-15	12-Dec-15																		
PCB-XX-1040	Complete Blinding to Bay 6	3	16-Oct-15*	19-Oct-15																		
PCB-XX-1050	Complete Pile Caps to Bay 6	4	20-Oct-15	24-Oct-15																		
PCB-XX-1060	Complete Bay 6 Baseslab	7	11-Nov-15*	19-Nov-15																		
PCB-XX-1070	Complete wall and Top Slab Bay 6	15	26-Nov-15*	12-Dec-15																		
<b>Bay 7</b>		39	17-Oct-15	02-Dec-15																		
PCB-XX-1000	Complete Blinding to Bay 7	7	17-Oct-15*	26-Oct-15																		
PCB-XX-1010	Complete Pile Caps to Bay 7	4	27-Oct-15	30-Oct-15																		
PCB-XX-1020	Complete Bay 7 Baseslab	9	02-Nov-15*	11-Nov-15																		
PCB-XX-1030	Complete wall and Top Slab Bay 7	15	16-Nov-15*	02-Dec-15																		
<b>Bay 8</b>		54	20-Oct-15	23-Dec-15																		
PCB-XX-960	Complete Blinding to Bay 8	4	20-Oct-15*	26-Oct-15																		
PCB-XX-970	Complete Pile Caps to Bay 8	3	27-Oct-15	30-Oct-15																		
PCB-XX-980	Complete Bay 8 Baseslab	7	11-Nov-15*	19-Nov-15																		
PCB-XX-990	Complete wall and Top Slab Bay 8	15	07-Dec-15	23-Dec-15																		
<b>Bay 9</b>		33	24-Oct-15	02-Dec-15																		
PCB-XX-920	Complete Blinding to Bay 9	0	24-Oct-15*	24-Oct-15																		
PCB-XX-930	Complete Pile Caps to Bay 9	5	26-Oct-15	30-Oct-15																		
PCB-XX-940	Complete Bay 9 Baseslab	8	02-Nov-15*	10-Nov-15																		
PCB-XX-950	Complete wall and Top Slab Bay 9	17	13-Nov-15*	02-Dec-15																		
<b>Bay 10</b>		51	26-Oct-15	23-Dec-15																		
PCB-XX-880	Complete Blinding to Bay 10	2	26-Oct-15*	28-Oct-15																		
PCB-XX-890	Complete Pile Caps to Bay 10	3	29-Oct-15*	02-Nov-15																		
PCB-XX-900	Complete Bay 10 Baseslab	7	16-Nov-15*	24-Nov-15																		
PCB-XX-910	Complete wall and Top Slab Bay 10	15	07-Dec-15*	23-Dec-15																		
<b>West</b>		108	07-Sep-15 A	29-Jan-16																		
<b>Stage 3</b>		108	07-Sep-15 A	29-Jan-16																		
PCB-09-1600	BCA (A1) Sheetpiling (300m) (Bays 11 to 20)	30	07-Sep-15 A	23-Sep-15 A																		
PCB-09-1620	BCA (A1) Excavation (150m) (Bays 11 to 20)	30	19-Sep-15 A	24-Oct-15																		
PCB-09-1170	BCA (A1) Backfilling to Ground Level (150m) (Bays 11 to 20)	55	24-Nov-15	29-Jan-16																		
<b>Bay 11</b>		32	30-Oct-15	05-Dec-15																		
PCB-XX-1080	Complete Blinding to Bay 11	3	30-Oct-15	03-Nov-15*																		
PCB-XX-1090	Complete Pile Caps to Bay 11	4	31-Oct-15*	04-Nov-15																		
PCB-XX-1100	Complete Bay 11 Baseslab	8	06-Nov-15	14-Nov-15																		
PCB-XX-1110	Complete wall and Top Slab Bay 11	15	19-Nov-15*	05-Dec-15																		
<b>Bay 12</b>		47	31-Oct-15	24-Dec-15																		
PCB-XX-1120	Complete Blinding to Bay 12	1	31-Oct-15	02-Nov-15*																		
PCB-XX-1130	Complete Pile Caps to Bay 12	3	03-Nov-15	06-Nov-15																		
PCB-XX-1140	Complete Bay 12 Baseslab	8	20-Nov-15*	28-Nov-15																		
PCB-XX-1150	Complete wall and Top Slab Bay 12	15	08-Dec-15*	24-Dec-15																		
<b>Bay 13</b>		33	03-Nov-15	10-Dec-15																		
PCB-XX-1160	Complete Blinding to Bay 13	1	03-Nov-15	04-Nov-15*																		
PCB-XX-1170	Complete Pile Caps to Bay 13	3	05-Nov-15	09-Nov-15																		
PCB-XX-1180	Complete Bay 13 Baseslab	9	10-Nov-15	20-Nov-15																		
PCB-XX-1190	Complete wall and Top Slab Bay 13	15	24-Nov-15*	10-Dec-15																		
<b>Bay 14</b>		47	05-Nov-15	31-Dec-15																		
PCB-XX-1200	Complete Blinding to Bay 14	1	05-Nov-15	06-Nov-15*																		
PCB-XX-1210	Complete Pile Caps to Bay 14	3	07-Nov-15	11-Nov-15																		
PCB-XX-1220	Complete Bay 14 Baseslab	6	25-Nov-15*	02-Dec-15																		

- Actual Work
- Remaining Work
- Critical Remaining Work
- ◆ Baseline Milestone
- ◆ Milestone

**THREE MONTH ROLLING PROGRAMME**

Date	Revision	Checked	Approved
01-Oct-15	THREE MONTH ROLLING PROGRAMME	SGJ	

Activity ID	Activity Name	Original Duration	Start	Finish	2015																			
					September				October				November				December							
					31	07	14	21	28	05	12	19	26	02	09	16	23	30	07	14	21	28		
PCB-XX-1230	Complete wall and Top Slab Bay 14	15	12-Dec-15*	31-Dec-15																				
<b>Bay 15</b>																								
PCB-XX-1240	Complete Blinding to Bay 15	1	07-Nov-15	09-Nov-15*																				
PCB-XX-1250	Complete Pile Caps to Bay 15	3	10-Nov-15	13-Nov-15																				
PCB-XX-1260	Complete Bay 15 Baseslab	7	16-Nov-15	24-Nov-15																				
PCB-XX-1270	Complete wall and Top Slab Bay 15	20	30-Nov-15*	23-Dec-15																				
<b>Bay 16</b>																								
PCB-XX-1280	Complete Blinding to Bay 16	1	10-Nov-15	11-Nov-15*																				
PCB-XX-1290	Complete Pile Caps to Bay 16	3	12-Nov-15	16-Nov-15																				
PCB-XX-1300	Complete Bay 16 Baseslab	8	30-Nov-15*	09-Dec-15																				
PCB-XX-1310	Complete wall and Top Slab Bay 16	17	21-Dec-15*	13-Jan-16																				
<b>Bay 17</b>																								
PCB-XX-1320	Complete Blinding to Bay 17	1	12-Nov-15	13-Nov-15*																				
PCB-XX-1330	Complete Pile Caps to Bay 17	4	14-Nov-15	19-Nov-15																				
PCB-XX-1340	Complete Bay 17 Baseslab	8	20-Nov-15	28-Nov-15																				
PCB-XX-1350	Complete wall and Top Slab Bay 17	15	03-Dec-15*	19-Dec-15																				
<b>Bay 18</b>																								
PCB-XX-1360	Complete Blinding to Bay 18	1	14-Nov-15	16-Nov-15*																				
PCB-XX-1370	Complete Pile Caps to Bay 18	3	17-Nov-15	20-Nov-15																				
PCB-XX-1380	Complete Bay 18 Baseslab	8	30-Nov-15	08-Dec-15																				
PCB-XX-1390	Complete wall and Top Slab Bay 18	15	12-Dec-15*	31-Dec-15																				
<b>Common Utilities Enclosure</b>																								
PCB-9A-130	CUE - Excavation and ELS for Common Utilities Enclosure Bay 1-6	10	09-Oct-15*	20-Oct-15																				
PCB-9A-170	CUE - Backfilling Bay 1-6	24	04-Jan-16*	30-Jan-16																				
<b>Bay 2</b>																								
PCB-9A-190	CUE - Blinding Bay 2	2	15-Oct-15	17-Oct-15																				
PCB-9A-280	CUE - Construct Base Slab of Bay 1	18	17-Oct-15	09-Nov-15																				
PCB-9A-290	CUE - Construct external/internal walls to Bay 1	12	09-Nov-15	23-Nov-15																				
PCB-9A-300	CUE - Construct Top slab of Bay 1	11	23-Nov-15	05-Dec-15																				
PCB-9A-310	CUE - Curing and Waterproofing to Bay 1	7	05-Dec-15	14-Dec-15																				
<b>Bay 1</b>																								
PCB-9A-490	CUE - Blinding Bay 1	2	20-Nov-15	21-Nov-15*																				
PCB-9A-240	CUE - Construct Base Slab of Bay 2	18	23-Nov-15	12-Dec-15																				
PCB-9A-250	CUE - Construct external/internal walls to Bay 2	12	14-Dec-15	29-Dec-15																				
PCB-9A-260	CUE - Construct Top slab of Bay 2	11	30-Dec-15	12-Jan-16																				
PCB-9A-270	CUE - Apply Waterproofing to Bay 2	7	13-Jan-16	20-Jan-16																				
<b>Bay 3</b>																								
PCB-9A-200	CUE - Blinding Bay 3	2	30-Oct-15	31-Oct-15*																				
PCB-9A-320	CUE - Construct Base Slab of Bay 3	18	02-Nov-15	21-Nov-15																				
PCB-9A-330	CUE - Construct external/internal walls to Bay 3	12	05-Dec-15	19-Dec-15																				
PCB-9A-340	CUE - Construct Top slab of Bay 3	11	19-Dec-15	05-Jan-16																				
PCB-9A-350	CUE - Apply Waterproofing to Bay 3	3	05-Jan-16	08-Jan-16																				
<b>Bay 4</b>																								
PCB-9A-210	CUE - Blinding Bay 4	2	11-Nov-15	12-Nov-15*																				
PCB-9A-360	CUE - Construct Base Slab of Bay 4	18	13-Nov-15	03-Dec-15																				
PCB-9A-370	CUE - Construct external/internal walls to Bay 4	12	04-Dec-15	17-Dec-15																				
PCB-9A-380	CUE - Construct Top slab of Bay 4	11	18-Dec-15	02-Jan-16																				
PCB-9A-390	CUE - Apply Waterproofing to Bay 4	3	04-Jan-16	06-Jan-16																				
<b>Bay 5</b>																								
PCB-9A-220	CUE - Blinding Bay 5	2	19-Nov-15	20-Nov-15*																				
PCB-9A-400	CUE - Construct Base Slab of Bay 5	18	21-Nov-15	11-Dec-15																				
PCB-9A-410	CUE - Construct external/internal walls to Bay 5	12	12-Dec-15	28-Dec-15																				
PCB-9A-420	CUE - Construct Top slab of Bay 5	11	29-Dec-15	11-Jan-16																				
PCB-9A-430	CUE - Apply Waterproofing to Bay 5	3	12-Jan-16	14-Jan-16																				
<b>Bay 6</b>																								
PCB-9A-230	CUE - Blinding Bay 6	2	02-Dec-15	03-Dec-15*																				
PCB-9A-440	CUE - Construct Base Slab of Bay 6	18	04-Dec-15	24-Dec-15																				
PCB-9A-450	CUE - Construct external/internal walls to Bay 6	12	12-Jan-16	25-Jan-16																				
PCB-9A-460	CUE - Construct Top slab of Bay 6	11	26-Jan-16	06-Feb-16																				
PCB-9A-470	CUE - Apply Waterproofing to Bay 6	3	15-Feb-16	17-Feb-16																				
PCB-9A-480	CUE - Apply Waterproofing to Bay 5	7	15-Feb-16	22-Feb-16																				
<b>Seawater Pump House</b>																								
PCB-13A-0500	Commencement of Seawater Pumpstation	0	01-Nov-15*																					
<b>Piling</b>																								
PCB-13A-740	SWP - Additional Pre-drilling works	24	03-Oct-15	31-Oct-15																				
PCB-13A-110	SWP - Prebored socket H-piles (1 to 10) x 2 rigs	20	02-Nov-15	24-Nov-15																				
PCB-13A-500	SWP - Prebored socket H-piles (11 to 20) x 2 rigs	20	25-Nov-15	17-Dec-15																				

- Actual Work
- Remaining Work
- Critical Remaining Work
- Baseline Milestone
- Milestone

**THREE MONTH ROLLING PROGRAMME**

Date	Revision	Checked	Approved
01-Oct-15	THREE MONTH ROLLING PROGRAMME	SGJ	

Activity ID	Activity Name	Original Duration	Start	Finish	2015																		
					September				October				November				December						
					31	07	14	21	28	05	12	19	26	02	09	16	23	30	07	14	21	28	
PCB-13A-510	SWP - Prebored socket H-piles (21 to 30) x 2 rigs	20	18-Dec-15	13-Jan-16																			
PCB-13A-520	SWP - Prebored socket H-piles (31 to 40) x 2 rigs	20	14-Jan-16	05-Feb-16																			
PCB-13A-720	SWP - Prebored socket H-piles (41 to 50) x 2 rigs	20	06-Feb-16	07-Mar-16																			
PCB-13A-730	SWP - Prebored socket H-piles (51 to 66) x 2 rigs	32	08-Mar-16	14-Apr-16																			
PCB-13A-120	SWP - Socketed H-Piles Load Testing	12	15-Apr-16	28-Apr-16																			

- Actual Work
- Remaining Work
- Critical Remaining Work
- Baseline Milestone
- Milestone

**THREE MONTH ROLLING PROGRAMME**

Date	Revision	Checked	Approved
01-Oct-15	THREE MONTH ROLLING PROGRAMME	SGJ	