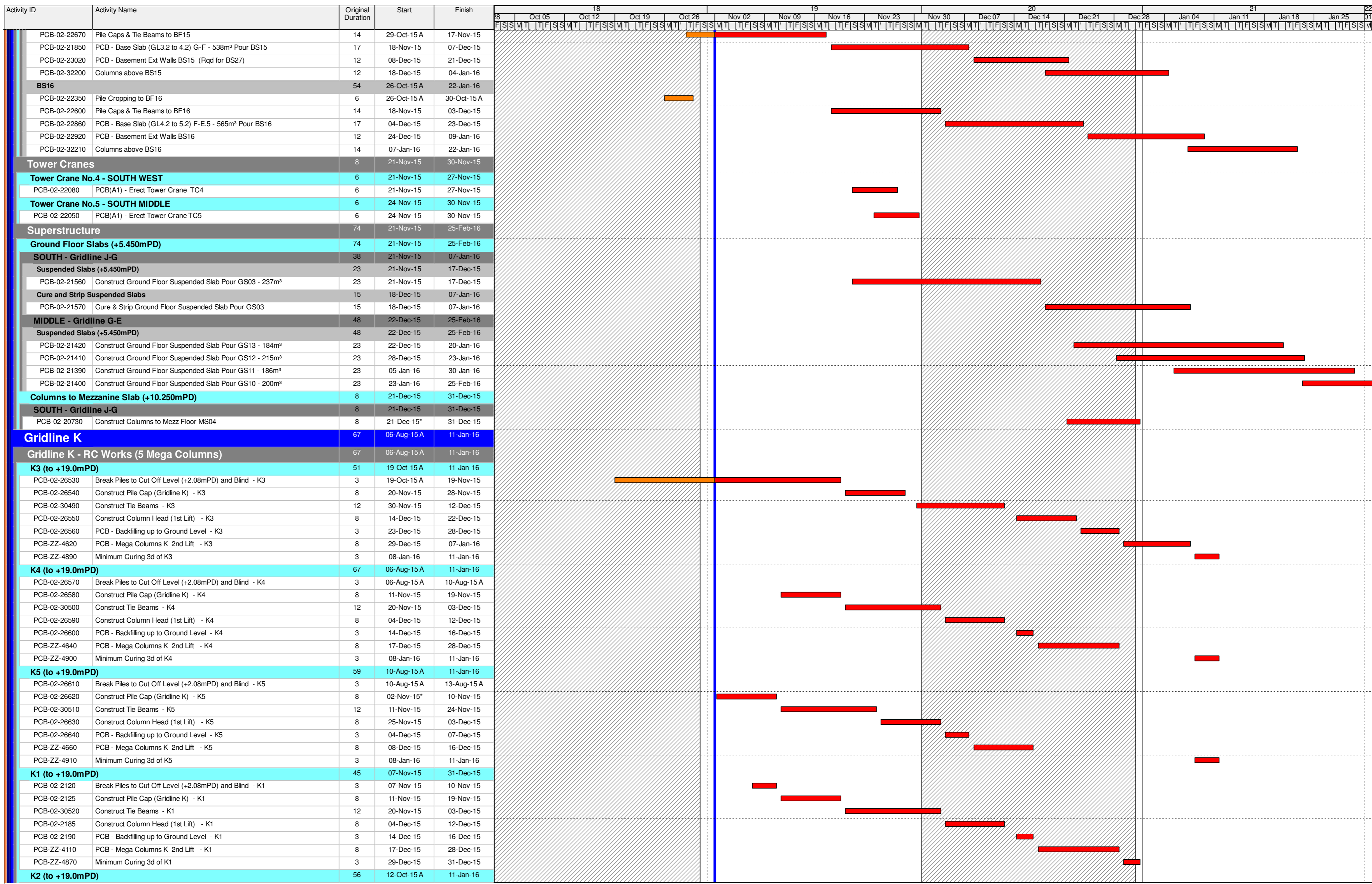


Activity ID	Activity Name	Original Duration	Start	Finish	Gantt Chart																											
					28	Oct 05	Oct 12	Oct 19	Oct 26	Nov 02	Nov 09	Nov 16	Nov 23	Nov 30	Dec 07	Dec 14	Dec 21	Dec 28	Jan 04	Jan 11	Jan 18	Jan 25	31									
HY/2013/01 HKZMB HKBCF - PCB - 3MRP - September		200	02-Jul-15 A	06-May-16	[Gantt Chart]																											
CONSTRUCTION					[Gantt Chart]																											
Passenger Clearance Building					[Gantt Chart]																											
Earthwork					[Gantt Chart]																											
Bulk Excavation (to -3.845 -1.495mPD)					[Gantt Chart]																											
South - 161230m³					[Gantt Chart]																											
West - 86,369m³					[Gantt Chart]																											
PCB-02-29610	PCB - Removal of A0 Bench	14	15-Sep-15 A	02-Oct-15 A	[Gantt Chart]																											
PCB-02-29620	PCB - Removal of B0 Bench	14	22-Sep-15 A	07-Oct-15 A	[Gantt Chart]																											
A0					[Gantt Chart]																											
PCB-02-29320	PCB - Excavation for Basement Zone A1	12	08-Sep-15 A	22-Oct-15 A	[Gantt Chart]																											
PCB-02-29330	PCB - Excavation for Basement Zone A2	12	01-Dec-15	15-Dec-15	[Gantt Chart]																											
B0					[Gantt Chart]																											
PCB-02-29350	PCB - Excavation for Basement Zone B1	12	18-Sep-15 A	06-Nov-15	[Gantt Chart]																											
PCB-02-29360	PCB - Excavation for Basement Zone B2	12	07-Dec-15	21-Dec-15	[Gantt Chart]																											
Centre - 120,090m³					[Gantt Chart]																											
Centre - 120,090m³					[Gantt Chart]																											
PCB-02-29600	PCB - Excavation for Basement Zone C2 to -1.8mPD	15	31-Aug-15 A	15-Sep-15 A	[Gantt Chart]																											
PCB-02-1780	PCB - Excavation for Basement Zone C1 to -3.84mPD	35	20-Aug-15 A	23-Sep-15 A	[Gantt Chart]																											
PCB-02-29870	PCB - Excavation for Basement Zone C2 to -3.84mPD	20	15-Sep-15 A	02-Nov-15	[Gantt Chart]																											
North - 94,824m³					[Gantt Chart]																											
East - 47,412m³					[Gantt Chart]																											
PCB-02-31580	PCB - Excavation for Basement (23,706m³) Zone E3 East	14	14-Nov-15*	30-Nov-15	[Gantt Chart]																											
Pile Caps and Tie Beam Construction					[Gantt Chart]																											
Basement Tie Beams & Pile Caps					[Gantt Chart]																											
Zone E1					[Gantt Chart]																											
BS05					[Gantt Chart]																											
PCB-02-24400	Waterproofing to BF05 Mega Pile Cap Gridline H-G East	4	22-Jul-15 A	27-Jul-15 A	[Gantt Chart]																											
PCB-02-22630	Pile Caps to BF05 and Base Slab Mega Pile Cap Gridline H-G East	12	08-Jul-15 A	28-Jul-15 A	[Gantt Chart]																											
PCB-02-22260	Pile Cropping to BF05 Mega Pile Cap	12	02-Jul-15 A	17-Aug-15 A	[Gantt Chart]																											
PCB-02-31990	Columns above BS05	12	30-Jul-15 A	26-Sep-15 A	[Gantt Chart]																											
PCB-02-23040	BS05 External Wall	12	26-Sep-15 A	10-Oct-15 A	[Gantt Chart]																											
PCB-02-32000	BS05 Double Slab Walls	4	22-Oct-15 A	02-Nov-15	[Gantt Chart]																											
PCB-02-32010	BS05 Double Slab	5	28-Oct-15 A	04-Nov-15	[Gantt Chart]																											
BS04					[Gantt Chart]																											
PCB-02-22250	Pile Cropping to BF04	12	04-Aug-15 A	17-Aug-15 A	[Gantt Chart]																											
PCB-02-22620	Pile Caps & Tie Beams to BF04	12	04-Sep-15 A	22-Sep-15 A	[Gantt Chart]																											
PCB-02-24390	Waterproofing to BF04	4	23-Sep-15 A	26-Sep-15 A	[Gantt Chart]																											
PCB-02-22720	Backfilling to Tie Beams to BF04	4	29-Sep-15 A	09-Oct-15 A	[Gantt Chart]																											
PCB-02-21980	PCB - Base Slab (GL0.2 to 1.2) H-G - 204m³ Pour BS04	15	10-Oct-15 A	20-Oct-15 A	[Gantt Chart]																											
PCB-02-32040	BS04 Double Slab Walls	4	22-Oct-15 A	07-Nov-15	[Gantt Chart]																											
PCB-02-23030	PCB - Basement Ext Walls BS04	12	26-Oct-15 A	10-Nov-15	[Gantt Chart]																											
PCB-02-32050	BS04 Double Slab	4	09-Nov-15	12-Nov-15	[Gantt Chart]																											
PCB-02-32030	Columns above BS04	9	07-Nov-15	17-Nov-15	[Gantt Chart]																											
BS06					[Gantt Chart]																											
PCB-02-20090	Pile Cropping to BF06	12	03-Aug-15 A	15-Aug-15 A	[Gantt Chart]																											
PCB-02-22640	Pile Caps & Tie Beams to BF06	12	15-Aug-15 A	05-Sep-15 A	[Gantt Chart]																											
PCB-02-24410	Waterproofing to BF06	4	24-Aug-15 A	11-Sep-15 A	[Gantt Chart]																											
PCB-02-25150	Backfilling to Tie Beams to BF06	4	12-Sep-15 A	05-Oct-15 A	[Gantt Chart]																											
PCB-02-22850	PCB - Base Slab (GL0.2 to 1.2) H-G - 337m³ Pour BS06	15	23-Sep-15 A	13-Oct-15 A	[Gantt Chart]																											
PCB-02-23050	PCB - Basement Ext Walls BS06	18	19-Oct-15 A	28-Oct-15 A	[Gantt Chart]																											
PCB-02-32060	Columns above BS06	9	02-Nov-15	11-Nov-15	[Gantt Chart]																											
PCB-02-32070	BS06 Double Slab Walls	4	12-Nov-15	16-Nov-15	[Gantt Chart]																											
PCB-02-32080	BS06 Double Slab	4	17-Nov-15	20-Nov-15	[Gantt Chart]																											
Zone E2					[Gantt Chart]																											
BS11					[Gantt Chart]																											
PCB-02-20270	Pile Cropping to BF11 Mega Pile Cap	12	13-Aug-15 A	22-Aug-15 A	[Gantt Chart]																											
PCB-02-22540	Pile Caps & Tie Beams to BF11 Mega Pile Cap Gridline E-F East	12	24-Aug-15 A	10-Sep-15 A	[Gantt Chart]																											
PCB-02-24310	Waterproofing to BF11 Mega Pile Cap Gridline E-F East	4	24-Aug-15 A	18-Sep-15 A	[Gantt Chart]																											
PCB-02-32090	Columns above BS11	6	13-Oct-15 A	05-Nov-15	[Gantt Chart]																											
PCB-02-23070	PCB - Basement Ext Walls BS11	12	03-Nov-15*	16-Nov-15	[Gantt Chart]																											
PCB-02-32100	BS11 Double Slab Walls	4	17-Nov-15	20-Nov-15	[Gantt Chart]																											

- █ Actual Work
- █ Remaining Work
- █ Critical Remaining Work
- ◆ Milestone

3MRP - Progress to 02-Nov-15

Date	Revision	Checked	Approved



- Actual Work
- Remaining Work
- Critical Remaining Work
- ◆ Milestone

3MRP - Progress to 02-Nov-15

Date	Revision	Checked	Approved

Activity ID	Activity Name	Original Duration	Start	Finish	18							19							20							21						
					Oct 05	Oct 12	Oct 19	Oct 26	Nov 02	Nov 09	Nov 16	Nov 23	Nov 30	Dec 07	Dec 14	Dec 21	Dec 28	Jan 04	Jan 11	Jan 18	Jan 25	Feb 01										
PCB-02-26490	Break Piles to Cut Off Level (+2.08mPD) and Blind - K2	3	12-Oct-15 A	19-Nov-15	[Gantt bar: Oct 12 to Oct 19]																											
PCB-02-26500	Construct Pile Cap (Gridline K) - K2	8	20-Nov-15	28-Nov-15	[Gantt bar: Nov 20 to Nov 28]																											
PCB-02-30530	Construct Tie Beams - K2	12	30-Nov-15	12-Dec-15	[Gantt bar: Nov 30 to Dec 12]																											
PCB-02-26510	Construct Column Head (1st Lift) - K2	8	14-Dec-15	22-Dec-15	[Gantt bar: Dec 14 to Dec 22]																											
PCB-02-26520	PCB - Backfilling up to Ground Level - K2	3	23-Dec-15	28-Dec-15	[Gantt bar: Dec 23 to Dec 28]																											
PCB-ZZ-4600	PCB - Mega Columns K 2nd Lift - K2	8	29-Dec-15	07-Jan-16	[Gantt bar: Dec 29 to Jan 7]																											
PCB-ZZ-4880	Minimum Curing 3d of K2	3	08-Jan-16	11-Jan-16	[Gantt bar: Jan 8 to Jan 11]																											
Southern Drop-Off Area		111	03-Aug-15 A	29-Jan-16	[Summary bar]																											
Southern Drop off Area - Pile Caps		88	03-Aug-15 A	31-Dec-15	[Summary bar]																											
Southern Drop Off Area - East		54	03-Aug-15 A	27-Nov-15	[Summary bar]																											
Pile Caps		54	03-Aug-15 A	27-Nov-15	[Summary bar]																											
PCB-16-1380	DoA - EAST - Excavation and ELS for DoA East Pile Caps (24 No) and Gridlin	48	03-Aug-15 A	12-Sep-15 A	[Gantt bar: Aug 3 to Sep 12]																											
PCB-16-1400	DoA - EAST - Construct Pile Caps (3 No) GL D13 (to +4.0mPD)	8	11-Aug-15 A	30-Oct-15 A	[Gantt bar: Aug 11 to Oct 30]																											
PCB-16-1730	DoA - EAST - Construct Pile Caps (3 No) GL D12 (to +4.0mPD)	8	11-Aug-15 A	03-Nov-15	[Gantt bar: Aug 11 to Nov 3]																											
PCB-16-1740	DoA - EAST - Construct Pile Caps (3 No) GL D11 (to +4.0mPD)	8	03-Aug-15 A	03-Nov-15	[Gantt bar: Aug 3 to Nov 3]																											
PCB-16-1760	DoA - EAST - Construct Pile Caps (3 No) GL D9 (to +4.0mPD)	8	17-Aug-15 A	09-Nov-15	[Gantt bar: Aug 17 to Nov 9]																											
PCB-16-1390	DoA - EAST - Break down and make good piles to cut off level (+2.075mPD) (:	48	03-Aug-15 A	10-Nov-15	[Gantt bar: Aug 3 to Nov 10]																											
PCB-16-1750	DoA - EAST - Construct Pile Caps (3 No) GL D10 (to +4.0mPD)	8	17-Aug-15 A	11-Nov-15	[Gantt bar: Aug 17 to Nov 11]																											
PCB-16-1770	DoA - EAST - Construct Pile Caps (3 No) GL D14 (to +4.0mPD)	8	10-Nov-15	18-Nov-15	[Gantt bar: Nov 10 to Nov 18]																											
PCB-16-1780	DoA - EAST - Construct Pile Caps (3 No) GL D15 (to +4.0mPD)	8	19-Nov-15	27-Nov-15	[Gantt bar: Nov 19 to Nov 27]																											
Column 1st Lift		9	19-Oct-15 A	04-Nov-15	[Summary bar]																											
PCB-16-1700	DoA - EAST - Construct Column Kickers (3 No) DC11,12 & 13	3	19-Oct-15 A	24-Oct-15 A	[Gantt bar: Oct 19 to Oct 24]																											
PCB-16-1410	DoA - EAST - Construct Column Kickers (3 No) DC26,27 & 28	3	26-Oct-15 A	02-Nov-15	[Gantt bar: Oct 26 to Nov 2]																											
PCB-16-1690	DoA - EAST - Construct Column Kickers (3 No) DC41,42 & 43	3	02-Nov-15*	04-Nov-15	[Gantt bar: Nov 2 to Nov 4]																											
Columns, Piers and Bearings		22	26-Oct-15 A	27-Nov-15	[Summary bar]																											
PCB-16-1620	DoA - EAST - Construct Columns 3 No (to +11mPD) DC26,27 & 28	12	02-Nov-15*	14-Nov-15	[Gantt bar: Nov 2 to Nov 14]																											
PCB-16-1430	DoA - EAST - Construct Columns 3 No (to +11mPD) DC11,12 & 13	12	26-Oct-15 A	18-Nov-15	[Gantt bar: Oct 26 to Nov 18]																											
PCB-16-1630	DoA - EAST - Construct Columns 3 No (to +11mPD) DC41,42 & 43	12	13-Nov-15*	27-Nov-15	[Gantt bar: Nov 13 to Nov 27]																											
Southern Drop Off Area - West		88	07-Sep-15 A	31-Dec-15	[Summary bar]																											
PCB-16-1440	DoA - WEST - Excavation and ELS for DoA West Pile Caps (21 No) and Gridlin	36	15-Sep-15 A	13-Nov-15	[Gantt bar: Sep 15 to Nov 13]																											
PCB-16-1450	DoA - WEST - Break down piles to cut off level (+2.075mPD) (21 No)	36	22-Sep-15 A	17-Nov-15	[Gantt bar: Sep 22 to Nov 17]																											
Pile Caps		42	07-Sep-15 A	10-Nov-15	[Summary bar]																											
PCB-16-1460	DoA - WEST - Construct Pile Caps in (3 No) GL D8 (to +4.0mPD)	8	07-Sep-15 A	10-Nov-15	[Gantt bar: Sep 7 to Nov 10]																											
PCB-16-1870	DoA - WEST - Construct Pile Caps in (3 No) GL D7 (to +4.0mPD)	8	29-Sep-15 A	10-Nov-15	[Gantt bar: Sep 29 to Nov 10]																											
PCB-16-1880	DoA - WEST - Construct Pile Caps in (3 No) GL D6 (to +4.0mPD)	8	17-Sep-15 A	10-Nov-15	[Gantt bar: Sep 17 to Nov 10]																											
Column 1st Lift		9	11-Nov-15	20-Nov-15	[Summary bar]																											
PCB-16-1470	DoA - WEST - Construct Kickers (3 No) GL D8 (to +7.294mPD)	3	11-Nov-15	13-Nov-15	[Gantt bar: Nov 11 to Nov 13]																											
PCB-16-1940	DoA - WEST - Construct Kickers (3 No) GL D7 (to +7.294mPD)	3	14-Nov-15	17-Nov-15	[Gantt bar: Nov 14 to Nov 17]																											
PCB-16-1950	DoA - WEST - Construct Kickers (3 No) GL D6 (to +7.294mPD)	3	18-Nov-15	20-Nov-15	[Gantt bar: Nov 18 to Nov 20]																											
Columns, Piers and Bearings		36	18-Nov-15	31-Dec-15	[Summary bar]																											
PCB-16-1490	DoA - Construct Columns 3 No GL D8 (to +11mPD)	12	18-Nov-15	01-Dec-15	[Gantt bar: Nov 18 to Dec 1]																											
PCB-16-2060	DoA - Construct Columns 3 No GL D3 (to +11mPD)	12	19-Nov-15	02-Dec-15	[Gantt bar: Nov 19 to Dec 2]																											
PCB-16-1610	DoA - Construct Columns 3 No GL D7 (to +11mPD)	12	02-Dec-15	15-Dec-15	[Gantt bar: Dec 2 to Dec 15]																											
PCB-16-1660	DoA - Construct Columns 3 No GL D6 (to +11mPD)	12	16-Dec-15	31-Dec-15	[Gantt bar: Dec 16 to Dec 31]																											
Southern Drop off Area - Decking		51	27-Nov-15	29-Jan-16	[Summary bar]																											
Deck 12,11,10,9,8,7 - Early Construction		51	27-Nov-15	29-Jan-16	[Summary bar]																											
PCB-16-490	DoA - Complete Decking Works to Bay 11	24	27-Nov-15	28-Dec-15	[Gantt bar: Nov 27 to Dec 28]																											
PCB-16-520	DoA - Complete Decking Works to Bay 12	24	11-Dec-15	12-Jan-16	[Gantt bar: Dec 11 to Jan 12]																											
PCB-16-540	DoA - Complete Decking Works to Bay 9	24	31-Dec-15	29-Jan-16	[Gantt bar: Dec 31 to Jan 29]																											
Box Culvert A		124	27-Jul-15 A	29-Jan-16	[Summary bar]																											
Bored Piling		60	02-Nov-15	13-Jan-16	[Summary bar]																											
Portion A2 West Box Culvert A (8 Piles)		60	02-Nov-15	13-Jan-16	[Summary bar]																											
PCB-09-1950	BCA (A2W) - Mobilisation and Set up for Bored Piling	12	02-Nov-15*	14-Nov-15	[Gantt bar: Nov 2 to Nov 14]																											
PCB-02-31300	BCA (A2W) - Bored Pile	24	16-Nov-15	12-Dec-15	[Gantt bar: Nov 16 to Dec 12]																											
PCB-02-31970	BCA (A2W) - Bored Pile	24	16-Nov-15	12-Dec-15	[Gantt bar: Nov 16 to Dec 12]																											
PCB-02-31960	BCA (A2W) - Bored Pile	24	14-Dec-15	13-Jan-16	[Gantt bar: Dec 14 to Jan 13]																											
PCB-02-31980	BCA (A2W) - Bored Pile	24	14-Dec-15	13-Jan-16	[Gantt bar: Dec 14 to Jan 13]																											
RC Structures		124	27-Jul-15 A	29-Jan-16	[Summary bar]																											
Portion A1 & A2 East		124	27-Jul-15 A	29-Jan-16	[Summary bar]																											
East		99	27-Jul-15 A	30-Dec-15	[Summary bar]																											
Stage 1		47	27-Jul-15 A	26-Sep-15 A	[Summary bar]																											
PCB-09-1090	BCA (A2E & A1) Sheetpiling (214m) (Bays 1A to 7)	22	27-Jul-15 A	18-Sep-15 A	[Gantt bar: Jul 27 to Sep 18]																											
PCB-09-1100	BCA (A2E & A1) Excavation and Strutting (77m) (Bays 1A to 5)	33	31-Aug-15 A	26-Sep-15 A	[Gantt bar: Aug 31 to Sep 26]																											
Stage 2		52	07-Sep-15 A	26-Sep-15 A	[Summary bar]																											
PCB-09-1830	BCA (A1) Sheetpiling (120m) (Bays 10 to 7)	12	07-Sep-15 A	19-Sep-15 A	[Gantt bar: Sep 7 to Sep 19]																											
PCB-09-1840	BCA (A1) Excavation and Strutting (75m) (Bays 10 to 6)	33	09-Sep-15 A	26-Sep-15 A	[Gantt bar: Sep 9 to Sep 26]																											

- Actual Work
- Remaining Work
- Critical Remaining Work
- ◆ Milestone

3MRP - Progress to 02-Nov-15

Date	Revision	Checked	Approved

Activity ID	Activity Name	Original Duration	Start	Finish	18							19							20							21																												
					08	09	10	11	12	13	14	15	16	17	18	19	20	21	22	23	24	25	26	27	28	29	30	31	01	02	03	04	05	06	07	08	09	10	11	12	13	14	15	16	17	18	19	20	21	22	23	24	25	26
Bay 1																																																						
PCB-XX-840	Complete Blinding to Bay 1	1	25-Sep-15 A	25-Sep-15 A																																																		
PCB-XX-850	Complete Pile Caps to Bay 1	4	16-Sep-15 A	09-Oct-15 A																																																		
PCB-XX-860	Complete Bay 1 Baseslab	8	12-Oct-15 A	28-Oct-15 A																																																		
PCB-XX-870	Complete wall and Top Slab Bay 1	15	30-Oct-15 A	17-Nov-15																																																		
Bay 2																																																						
PCB-XX-800	Complete Blinding to Bay 2	1	26-Sep-15 A	26-Sep-15 A																																																		
PCB-XX-810	Complete Pile Caps to Bay 2	3	12-Oct-15 A	14-Oct-15 A																																																		
PCB-XX-820	Complete Bay 2 Baseslab	9	03-Nov-15*	12-Nov-15																																																		
PCB-XX-830	Complete wall and Top Slab Bay 2	15	20-Nov-15	07-Dec-15																																																		
Bay 3																																																						
PCB-XX-790	Complete Blinding to Bay 3	1	29-Sep-15 A	29-Sep-15 A																																																		
PCB-XX-750	Complete Pile Caps to Bay 3	4	14-Oct-15 A	17-Oct-15 A																																																		
PCB-XX-760	Complete Bay 3 Baseslab	8	22-Oct-15 A	02-Nov-15																																																		
PCB-XX-770	Complete wall and Top Slab Bay 3	15	03-Nov-15*	19-Nov-15																																																		
Bay 4																																																						
PCB-XX-780	Complete Blinding to Bay 4	2	15-Oct-15 A	19-Oct-15 A																																																		
PCB-XX-720	Complete Pile Caps to Bay 4	4	21-Oct-15 A	26-Oct-15 A																																																		
PCB-XX-730	Complete Bay 4 Baseslab	8	03-Nov-15*	11-Nov-15																																																		
PCB-XX-740	Complete wall and Top Slab Bay 4	15	20-Nov-15	07-Dec-15																																																		
Bay 5																																																						
PCB-XX-0610	Complete Blinding to Bay 5	1	19-Oct-15 A	22-Oct-15 A																																																		
PCB-XX-0620	Complete Pile Caps to Bay 5	3	27-Oct-15 A	03-Nov-15																																																		
PCB-XX-0630	Complete Bay 5 Baseslab	7	04-Nov-15*	12-Nov-15																																																		
PCB-XX-0640	Complete wall and Top Slab Bay 5	15	12-Nov-15*	30-Nov-15																																																		
Bay 6																																																						
PCB-XX-1040	Complete Blinding to Bay 6	3	21-Oct-15 A	24-Oct-15 A																																																		
PCB-XX-1050	Complete Pile Caps to Bay 6	4	02-Nov-15	05-Nov-15																																																		
PCB-XX-1060	Complete Bay 6 Baseslab	7	11-Nov-15*	19-Nov-15																																																		
PCB-XX-1070	Complete wall and Top Slab Bay 6	15	30-Nov-15*	17-Dec-15																																																		
Bay 7																																																						
PCB-XX-1000	Complete Blinding to Bay 7	7	28-Oct-15 A	31-Oct-15 A																																																		
PCB-XX-1010	Complete Pile Caps to Bay 7	4	02-Nov-15	05-Nov-15																																																		
PCB-XX-1020	Complete Bay 7 Baseslab	9	06-Nov-15*	16-Nov-15																																																		
PCB-XX-1030	Complete wall and Top Slab Bay 7	15	17-Nov-15*	03-Dec-15																																																		
Bay 8																																																						
PCB-XX-960	Complete Blinding to Bay 8	4	02-Nov-15*	06-Nov-15																																																		
PCB-XX-970	Complete Pile Caps to Bay 8	3	06-Nov-15	10-Nov-15																																																		
PCB-XX-980	Complete Bay 8 Baseslab	7	21-Nov-15*	28-Nov-15																																																		
PCB-XX-990	Complete wall and Top Slab Bay 8	15	08-Dec-15	24-Dec-15																																																		
Bay 9																																																						
PCB-XX-920	Complete Blinding to Bay 9	4	02-Nov-15*	05-Nov-15																																																		
PCB-XX-930	Complete Pile Caps to Bay 9	5	06-Nov-15	11-Nov-15																																																		
PCB-XX-940	Complete Bay 9 Baseslab	8	12-Nov-15*	20-Nov-15																																																		
PCB-XX-950	Complete wall and Top Slab Bay 9	17	21-Nov-15*	10-Dec-15																																																		
Bay 10																																																						
PCB-XX-880	Complete Blinding to Bay 10	2	02-Nov-15*	03-Nov-15																																																		
PCB-XX-890	Complete Pile Caps to Bay 10	3	04-Nov-15*	06-Nov-15																																																		
PCB-XX-900	Complete Bay 10 Baseslab	7	23-Nov-15*	01-Dec-15																																																		
PCB-XX-910	Complete wall and Top Slab Bay 10	15	11-Dec-15*	30-Dec-15																																																		
West																																																						
Stage 3																																																						
PCB-09-1600	BCA (A1) Sheetpiling (300m) (Bays 11 to 20)	30	07-Sep-15 A	23-Sep-15 A																																																		
PCB-09-1620	BCA (A1) Excavation (150m) (Bays 11 to 20)	30	19-Sep-15 A	10-Nov-15																																																		
PCB-09-1170	BCA (A1) Backfilling to Ground Level (150m) (Bays 11 to 20)	55	24-Nov-15*	29-Jan-16																																																		
Bay 11																																																						
PCB-XX-1080	Complete Blinding to Bay 11	3	05-Nov-15*	07-Nov-15																																																		
PCB-XX-1090	Complete Pile Caps to Bay 11	4	07-Nov-15*	12-Nov-15																																																		
PCB-XX-1100	Complete Bay 11 Baseslab	8	13-Nov-15	23-Nov-15																																																		
PCB-XX-1110	Complete wall and Top Slab Bay 11	15	23-Nov-15*	10-Dec-15																																																		
Bay 12																																																						
PCB-XX-1120	Complete Blinding to Bay 12	1	09-Nov-15	10-Nov-15*																																																		
PCB-XX-1130	Complete Pile Caps to Bay 12	3	11-Nov-15	14-Nov-15																																																		
PCB-XX-1140	Complete Bay 12 Baseslab	8	28-Nov-15*	07-Dec-15																																																		
PCB-XX-1150	Complete wall and Top Slab Bay 12	15	08-Dec-15*	24-Dec-15																																																		
Bay 13																																																						
PCB-XX-1160	Complete Blinding to Bay 13	1	11-Nov-15	12-Nov-15*																																																		

- ▬ Actual Work
- ▬ Remaining Work
- ▬ Critical Remaining Work
- ◆ Milestone

3MRP - Progress to 02-Nov-15

Date	Revision	Checked	Approved

