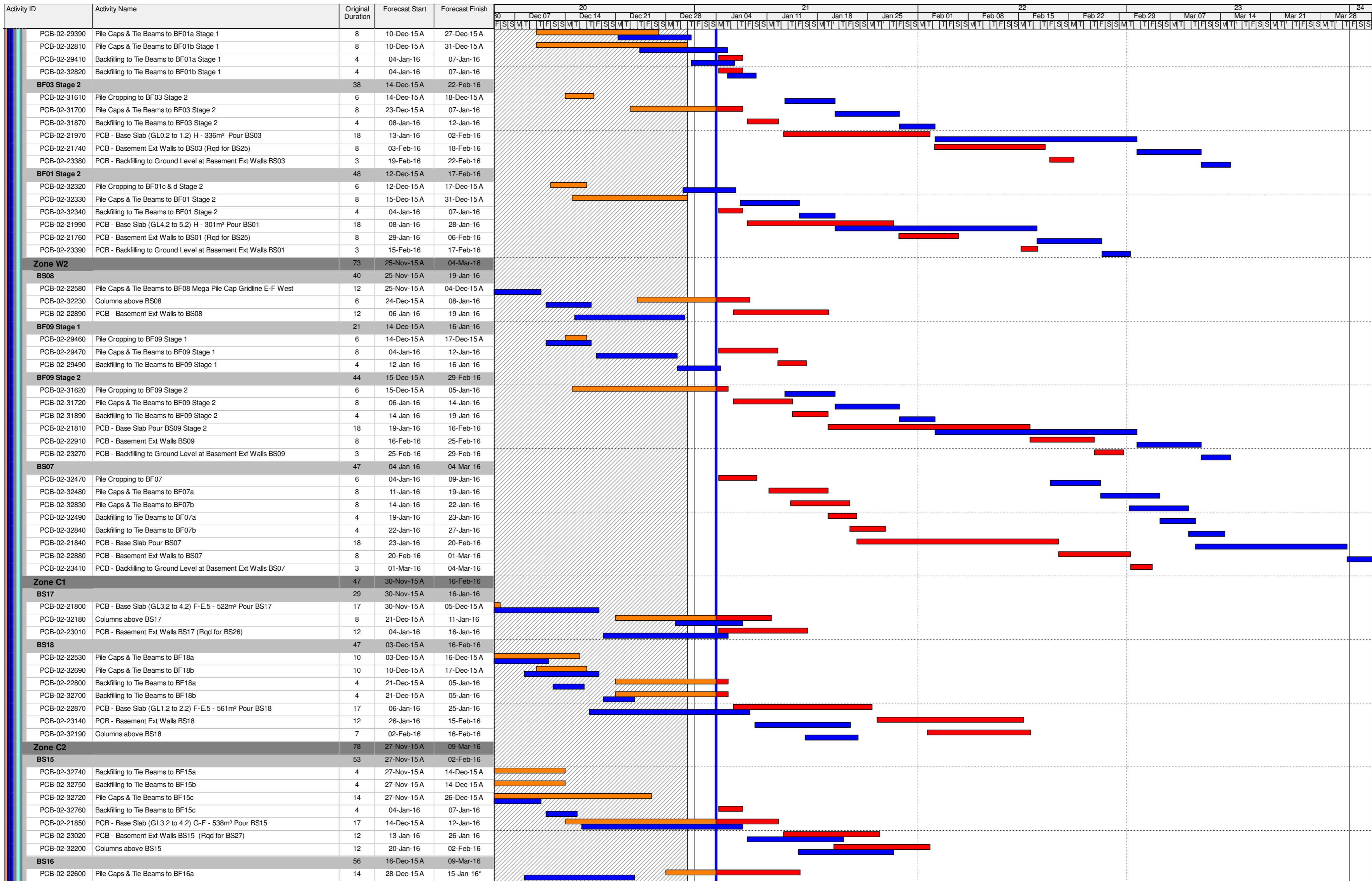


Activity ID	Activity Name	Original Duration	Forecast Start	Forecast Finish	20																				21				22				23				24			
					30	Dec 07	Dec 14	Dec 21	Dec 28	Jan 04	Jan 11	Jan 18	Jan 25	Feb 01	Feb 08	Feb 15	Feb 22	Feb 29	Mar 07	Mar 14	Mar 21	Mar 28																		
<b>HY/2013/01 HKZMB HKBCF - PCB - 3MRP - November</b>																																								
<b>CONSTRUCTION</b>																																								
<b>Passenger Clearance Building</b>																																								
<b>Earthwork</b>																																								
<b>Bulk Excavation (to -3.845 -1.495mPD)</b>																																								
<b>South - 161230m³</b>																																								
<b>West - 86,369m³</b>																																								
<b>A0</b>																																								
PCB-02-29330 PCB - Excavation for Basement Zone A2																																								
PCB-02-29340 PCB - Excavation for Basement Zone A3																																								
<b>B0</b>																																								
PCB-02-29360 PCB - Excavation for Basement Zone B2																																								
PCB-02-29370 PCB - Excavation for Basement Zone B3																																								
<b>Centre - 120,090m³</b>																																								
<b>Centre - 120,090m³</b>																																								
PCB-02-29500 PCB - Excavation for Basement (20,015m³) Zone C3 EAST																																								
PCB-02-31570 PCB - Excavation for Basement (20,015m³) Zone C3 WEST																																								
<b>North - 94,824m³</b>																																								
<b>East - 47,412m³</b>																																								
PCB-02-31580 PCB - Excavation for Basement (23,706m³) Zone E3 East																																								
PCB-02-29650 PCB - Excavation for Basement (23,706m³) Zone E3 West																																								
<b>West - 47,412m³</b>																																								
PCB-02-31590 PCB - Excavation for Basement (23,706m³) Zone W3 Stage A																																								
PCB-02-29740 PCB - Excavation for Basement (23,706m³) Zone W3 Stage B																																								
<b>Pile Caps and Tie Beam Construction</b>																																								
<b>Basement Tie Beams &amp; Pile Caps</b>																																								
<b>Zone E1</b>																																								
<b>BS04</b>																																								
PCB-02-32050 BS04 Double Slab																																								
PCB-02-32250 PCB - Basement Ext Walls BS04 West																																								
PCB-02-32270 PCB - Backfill behind Basement Ext Walls BS04 South																																								
<b>BS06</b>																																								
PCB-02-32070 BS06 Double Slab Walls																																								
PCB-02-32080 BS06 Double Slab																																								
PCB-02-32260 PCB - Basement Ext Walls BS06 West																																								
PCB-02-32060 Columns above BS06																																								
<b>Zone E2</b>																																								
<b>BS11</b>																																								
PCB-02-32110 BS11 Double Slab																																								
PCB-02-32090 Columns above BS11																																								
PCB-02-23070 PCB - Basement Ext Walls BS11																																								
<b>BS12</b>																																								
PCB-02-32120 Columns above BS12																																								
PCB-02-32130 BS12 Double Slab Walls																																								
PCB-02-23080 PCB - Basement Ext Walls BS12																																								
PCB-02-32140 BS12 Double Slab																																								
<b>BS10</b>																																								
PCB-02-32160 BS10 Double Slab Walls																																								
PCB-02-32170 BS10 Double Slab																																								
PCB-02-23060 PCB - Basement Ext Walls BS10																																								
PCB-02-32150 Columns above BS10																																								
<b>Zone W1</b>																																								
<b>BS02</b>																																								
PCB-02-32220 Columns above BS02																																								
PCB-02-21770 PCB - Basement Ext Walls to BS02																																								
<b>BF03 Stage 1</b>																																								
PCB-02-32310 Excavation to BF03 Stage 1																																								
PCB-02-29420 Pile Cropping to BF03 Stage 1																																								
PCB-02-29430 Pile Caps & Tie Beams to BF03 Stage 1																																								
PCB-02-29450 Backfilling to Tie Beams to BF03 Stage 1																																								
<b>BF01 Stage 1</b>																																								
PCB-02-29380 Pile Cropping to BF01 Stage 1																																								

- 3MRP BAR
- Actual Work
- Remaining Work
- Critical Remaining Work
- ◆ Milestone

**3MRP - Progress to 04-Jan-16**

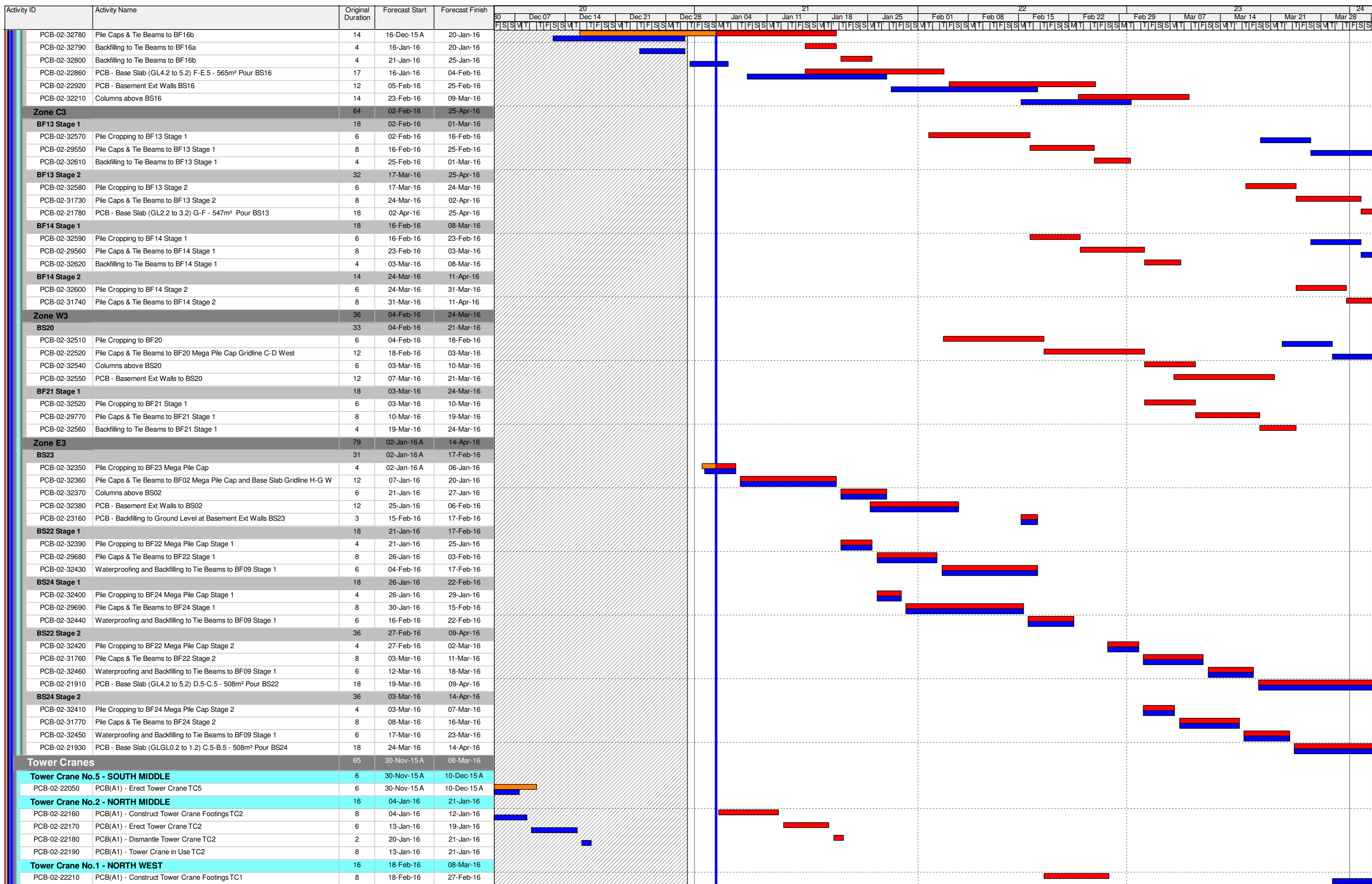
Date	Revision	Checked	Approved



**3MRP - Progress to 04-Jan-16**

Date	Revision	Checked	Approved

■ 3MRP BAR  
■ Actual Work  
■ Remaining Work  
■ Critical Remaining Work  
◆ Milestone



3MRP - Progress to 04-Jan-16

- 3MRP BAR
- Actual Work
- Remaining Work
- Critical Remaining Work
- ◆ Milestone

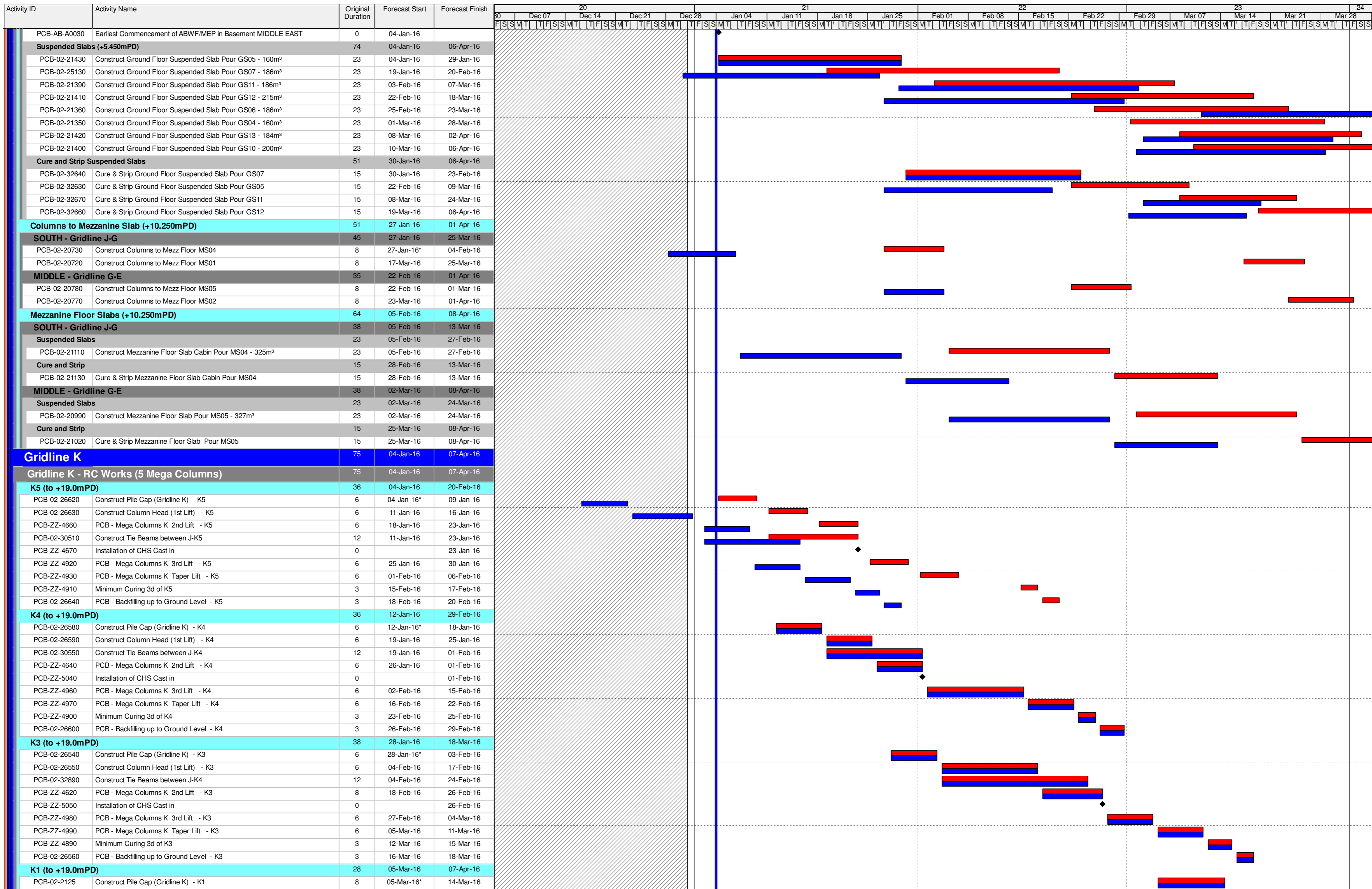
Date	Revision	Checked	Approved

Activity ID	Activity Name	Original Duration	Forecast Start	Forecast Finish	Gantt Chart																											
					20	21	22	23	24	Dec 07	Dec 14	Dec 21	Dec 28	Jan 04	Jan 11	Jan 18	Jan 25	Feb 01	Feb 08	Feb 15	Feb 22	Feb 29	Mar 07	Mar 14	Mar 21	Mar 28						
PCB-02-22200	PCB(A1) - Erect Tower Crane TC1	6	27-Feb-16	05-Mar-16	[Gantt Bar]																											
PCB-02-22220	PCB(A1) - Dismantle Tower Crane TC1	2	05-Mar-16	08-Mar-16	[Gantt Bar]																											
PCB-02-22230	PCB(A1) - Tower Crane in Use TC1	8	27-Feb-16	08-Mar-16	[Gantt Bar]																											
<b>Tower Crane No.3 - NORTH EAST</b>					[Gantt Bar]																											
PCB-02-22130	PCB(A1) - Construct Tower Crane Footings TC3	8	04-Jan-16	12-Jan-16	[Gantt Bar]																											
PCB-02-22120	PCB(A1) - Erect Tower Crane TC3	6	13-Jan-16	19-Jan-16	[Gantt Bar]																											
PCB-02-22140	PCB(A1) - Dismantle Tower Crane TC3	2	20-Jan-16	21-Jan-16	[Gantt Bar]																											
PCB-02-22150	PCB(A1) - Tower Crane in Use TC3	8	13-Jan-16	21-Jan-16	[Gantt Bar]																											
<b>Superstructure</b>					[Gantt Bar]																											
<b>Ground Floor Foundations South</b>					[Gantt Bar]																											
<b>Excavation for Service Troughs</b>					[Gantt Bar]																											
PCB-02-24870	PCB - Excavation for Service Trench BS26	5	18-Jan-16	22-Jan-16	[Gantt Bar]																											
PCB-02-24880	PCB - Excavation for Service Trench BS27	5	03-Feb-16	15-Feb-16	[Gantt Bar]																											
PCB-02-24450	PCB - Excavation for Service Trench BS25	5	19-Feb-16	24-Feb-16	[Gantt Bar]																											
<b>Waterproofing Trench Base slab</b>					[Gantt Bar]																											
PCB-02-24920	PCB - Waterproofing Trench Base Slab B26	3	23-Jan-16	26-Jan-16	[Gantt Bar]																											
PCB-02-24890	PCB - Waterproofing Trench Base Slab B27	3	16-Feb-16	18-Feb-16	[Gantt Bar]																											
PCB-02-24910	PCB - Waterproofing Trench Base Slab B25	3	25-Feb-16	27-Feb-16	[Gantt Bar]																											
<b>Service Trough Slabs</b>					[Gantt Bar]																											
PCB-02-21960	PCB - Service Trench Base Slab (GL4.2 to 5.2) H-G - 134m³ Pour BS26	8	27-Jan-16	04-Feb-16	[Gantt Bar]																											
PCB-02-21940	PCB - Service Trench Base Slab (GL4.2 to 5.2) H - 72m³ Pour BS27	8	19-Feb-16	27-Feb-16	[Gantt Bar]																											
PCB-02-21950	PCB - Service Trench Base Slab (GL4.2 to 5.2) H - 134m³ Pour BS25	8	29-Feb-16	08-Mar-16	[Gantt Bar]																											
<b>Service Trough Walls</b>					[Gantt Bar]																											
PCB-02-22980	PCB - Basement Ext Walls to BS26	8	05-Feb-16	20-Feb-16	[Gantt Bar]																											
PCB-02-23000	PCB - Basement Ext Walls to BS27	8	29-Feb-16	08-Mar-16	[Gantt Bar]																											
PCB-02-22990	PCB - Basement Ext Walls to BS25	8	09-Mar-16	17-Mar-16	[Gantt Bar]																											
<b>Waterproofing Trench Walls</b>					[Gantt Bar]																											
PCB-02-24980	PCB - Waterproofing to BS26 Walls	3	22-Feb-16	24-Feb-16	[Gantt Bar]																											
PCB-02-24960	PCB - Waterproofing to BS27 Walls	3	09-Mar-16	11-Mar-16	[Gantt Bar]																											
PCB-02-24970	PCB - Waterproofing to BS25 Walls	3	18-Mar-16	21-Mar-16	[Gantt Bar]																											
<b>Backfilling behind Service Trough Walls</b>					[Gantt Bar]																											
PCB-02-23430	PCB - Backfilling to Ground Level at Basement Ext Walls BS26	4	25-Feb-16	29-Feb-16	[Gantt Bar]																											
PCB-02-23440	PCB - Backfilling to Ground Level at Basement Ext Walls BS27	4	12-Mar-16	16-Mar-16	[Gantt Bar]																											
PCB-02-23320	PCB - Backfilling to Ground Level at Basement Ext Walls BS25	4	22-Mar-16	25-Mar-16	[Gantt Bar]																											
<b>Excavate for Pile Caps and Beams</b>					[Gantt Bar]																											
PCB-02-24940	PCB - Excavate Pile caps and Beams GF03	5	01-Mar-16	05-Mar-16	[Gantt Bar]																											
PCB-02-24950	PCB - Excavate Pile caps and Beams GF04	5	17-Mar-16	22-Mar-16	[Gantt Bar]																											
PCB-02-24930	PCB - Excavate Pile caps and Beams GF01	5	23-Mar-16	28-Mar-16	[Gantt Bar]																											
<b>Pile Cropping</b>					[Gantt Bar]																											
PCB-02-23550	Pile Cropping to GF03	8	03-Mar-16	11-Mar-16	[Gantt Bar]																											
PCB-02-23580	Pile Cropping to GF04	8	19-Mar-16	28-Mar-16	[Gantt Bar]																											
PCB-02-23490	Pile Cropping to GF01	8	25-Mar-16	02-Apr-16	[Gantt Bar]																											
<b>Pile Capping</b>					[Gantt Bar]																											
PCB-02-23560	Pile Caps and Tie Beams to GF03	10	05-Mar-16	16-Mar-16	[Gantt Bar]																											
PCB-02-23590	Pile Caps and Tie Beams to GF04	10	22-Mar-16	01-Apr-16	[Gantt Bar]																											
PCB-02-23500	Pile Caps and Tie Beams to GF01	10	28-Mar-16	08-Apr-16	[Gantt Bar]																											
<b>Water Proofing</b>					[Gantt Bar]																											
PCB-02-24790	Waterproofing Pile Caps and Tie Beams to GF03	4	17-Mar-16	21-Mar-16	[Gantt Bar]																											
PCB-02-24800	Waterproofing Pile Caps and Tie Beams to GF04	4	29-Mar-16	01-Apr-16	[Gantt Bar]																											
<b>Backfilling to Top Level of Ground Beams (+5.0mPD Generally)</b>					[Gantt Bar]																											
PCB-02-23570	Backfilling to Tie Beams to GF03	4	22-Mar-16	25-Mar-16	[Gantt Bar]																											
PCB-02-23600	Backfilling to Tie Beams to GF04	4	02-Apr-16	07-Apr-16	[Gantt Bar]																											
<b>Ground Slabs (+5.450mPD)</b>					[Gantt Bar]																											
PCB-02-21520	Construct Ground Floor Base Slab GS21 - 916m³	17	26-Mar-16	15-Apr-16	[Gantt Bar]																											
<b>Ground Floor Slabs (+5.450mPD)</b>					[Gantt Bar]																											
<b>SOUTH - Gridline J-G</b>					[Gantt Bar]																											
PCB-AB-A0010	Earliest Commencement of ABWF/MEP in Basement SOUTH EAST	0	20-Feb-16		[Milestone]																											
<b>Suspended Slabs (+5.450mPD)</b>					[Gantt Bar]																											
PCB-02-21560	Construct Ground Floor Suspended Slab Pour GS03 - 237m³	23	23-Nov-15 A	26-Jan-16	[Gantt Bar]																											
PCB-02-21540	Construct Ground Floor Suspended Slab Pour GS01 - 81m³	23	15-Feb-16	11-Mar-16	[Gantt Bar]																											
PCB-02-21550	Construct Ground Floor Suspended Slab Pour GS02 - 182m³	23	19-Feb-16	16-Mar-16	[Gantt Bar]																											
<b>Cure and Strip Suspended Slabs</b>					[Gantt Bar]																											
PCB-02-21570	Cure & Strip Ground Floor Suspended Slab Pour GS03	15	27-Jan-16	19-Feb-16	[Gantt Bar]																											
PCB-02-21590	Cure & Strip Ground Floor Suspended Slab Pour GS01	15	12-Mar-16	29-Mar-16	[Gantt Bar]																											
PCB-02-21600	Cure & Strip Ground Floor Suspended Slab Pour GS02	15	17-Mar-16	02-Apr-16	[Gantt Bar]																											
<b>MIDDLE - Gridline G-E</b>					[Gantt Bar]																											
PCB-AB-A0040	Earliest Commencement of ABWF/MEP in Basement MIDDLE WEST	0	04-Jan-16		[Milestone]																											

- 3MRP BAR
- Actual Work
- Remaining Work
- Critical Remaining Work
- ◆ Milestone

**3MRP - Progress to 04-Jan-16**

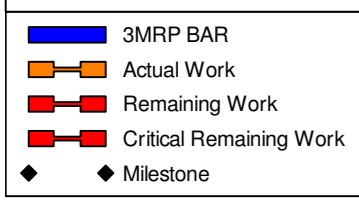
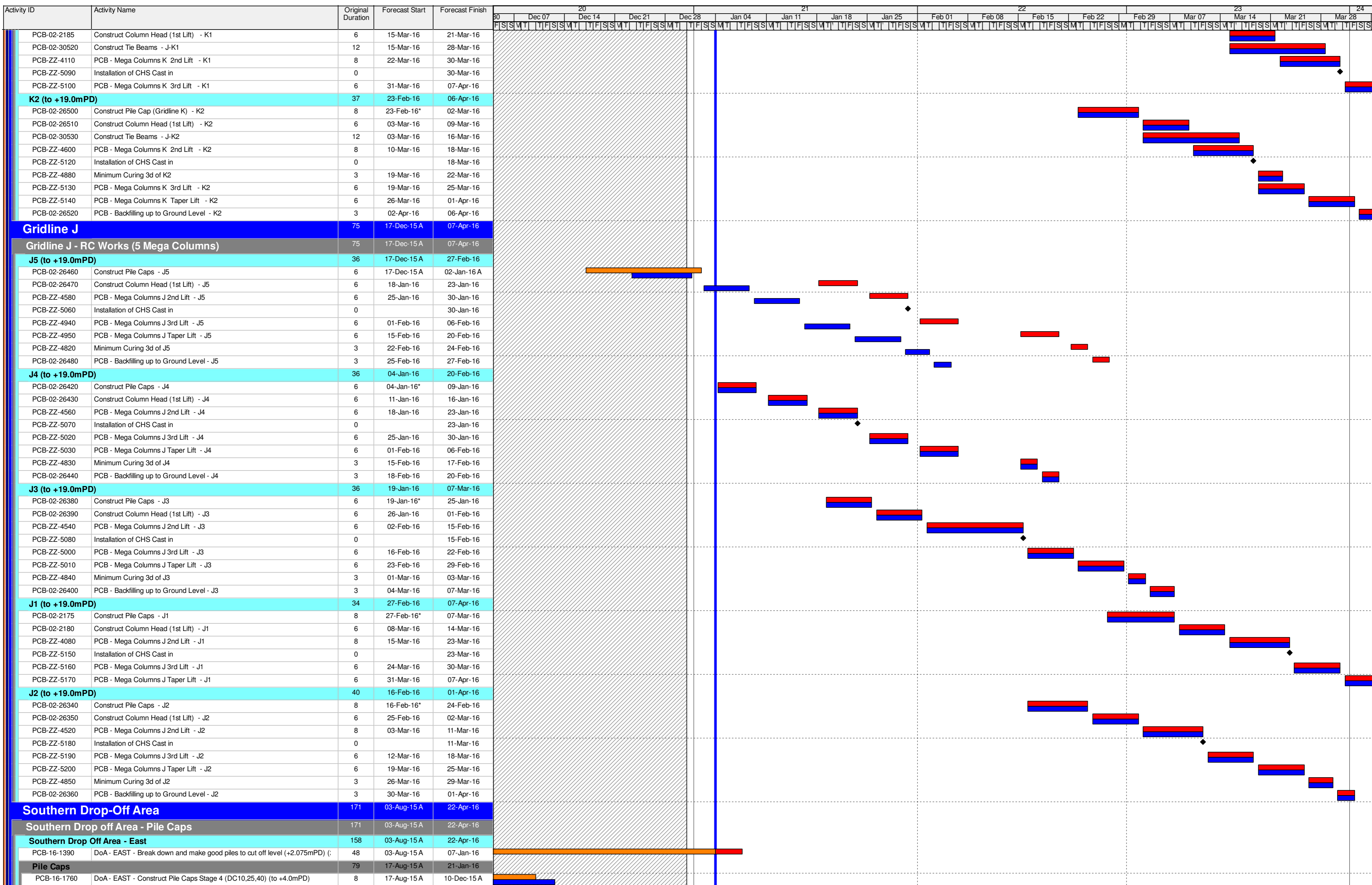
Date	Revision	Checked	Approved



3MRP - Progress to 04-Jan-16

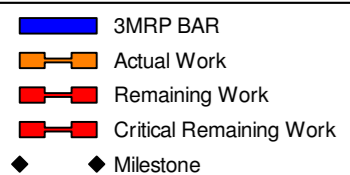
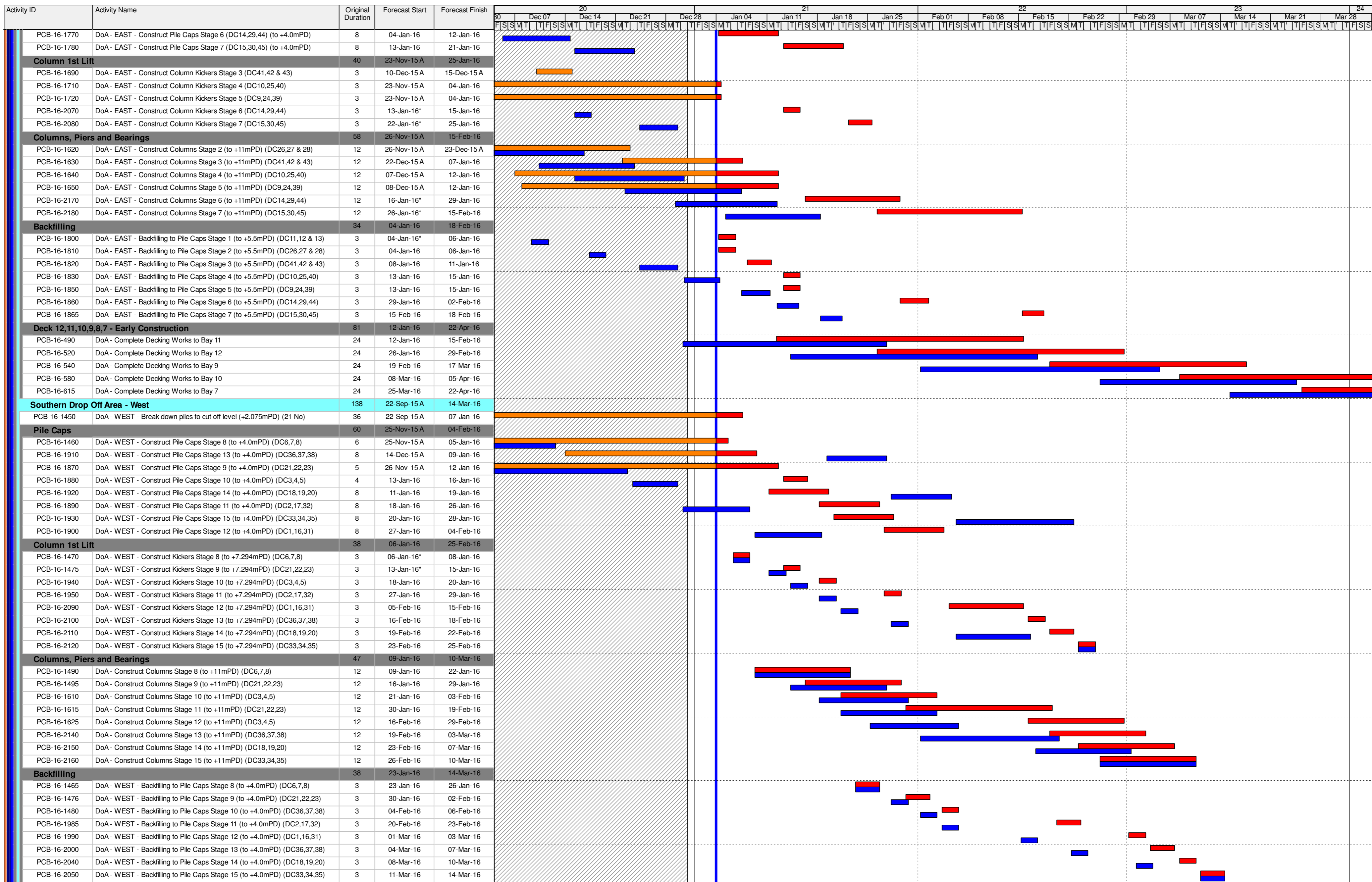
- 3MRP BAR
- Actual Work
- Remaining Work
- Critical Remaining Work
- ◆ Milestone

Date	Revision	Checked	Approved



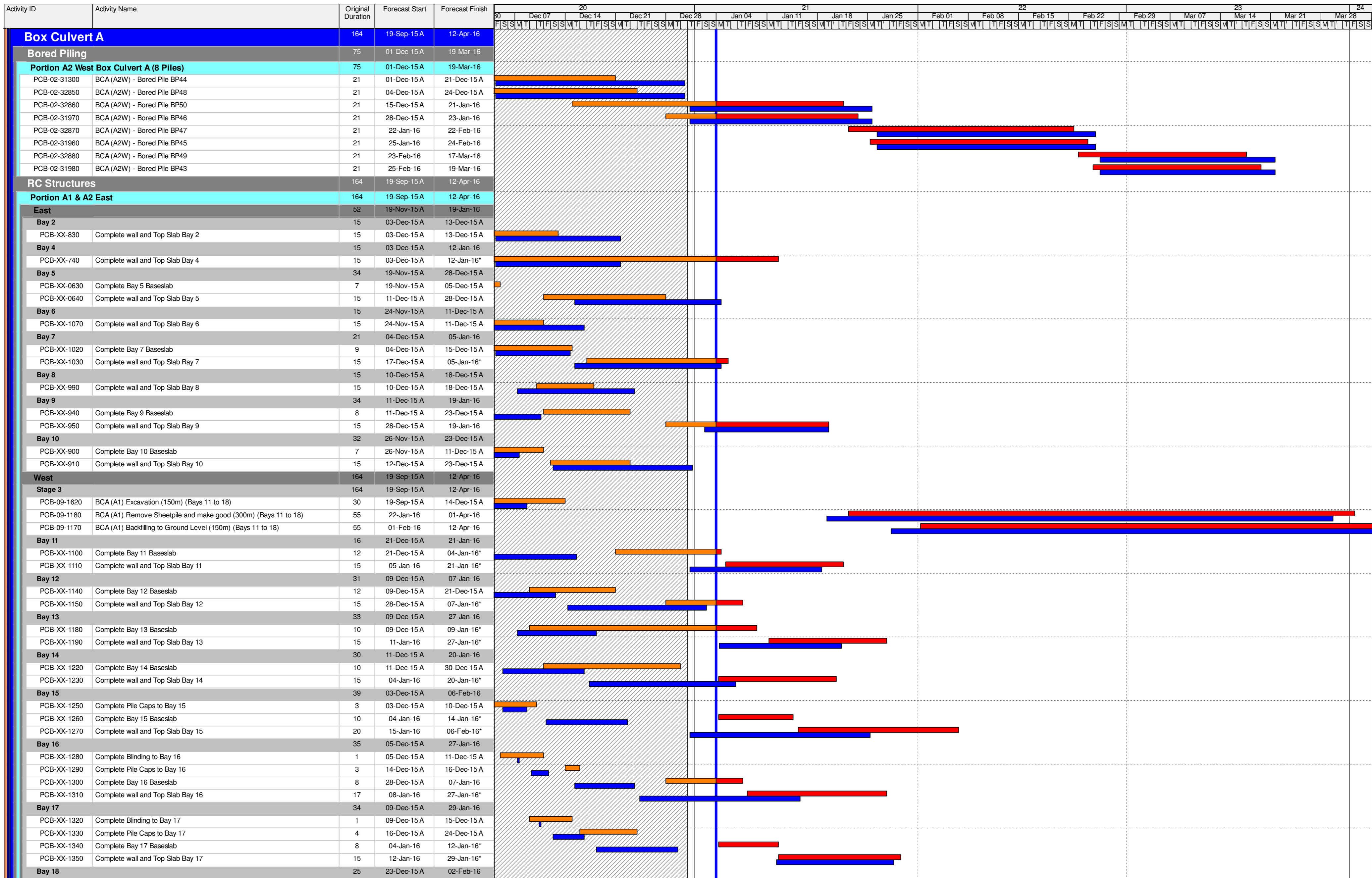
3MRP - Progress to 04-Jan-16

Date	Revision	Checked	Approved



**3MRP - Progress to 04-Jan-16**

Date	Revision	Checked	Approved

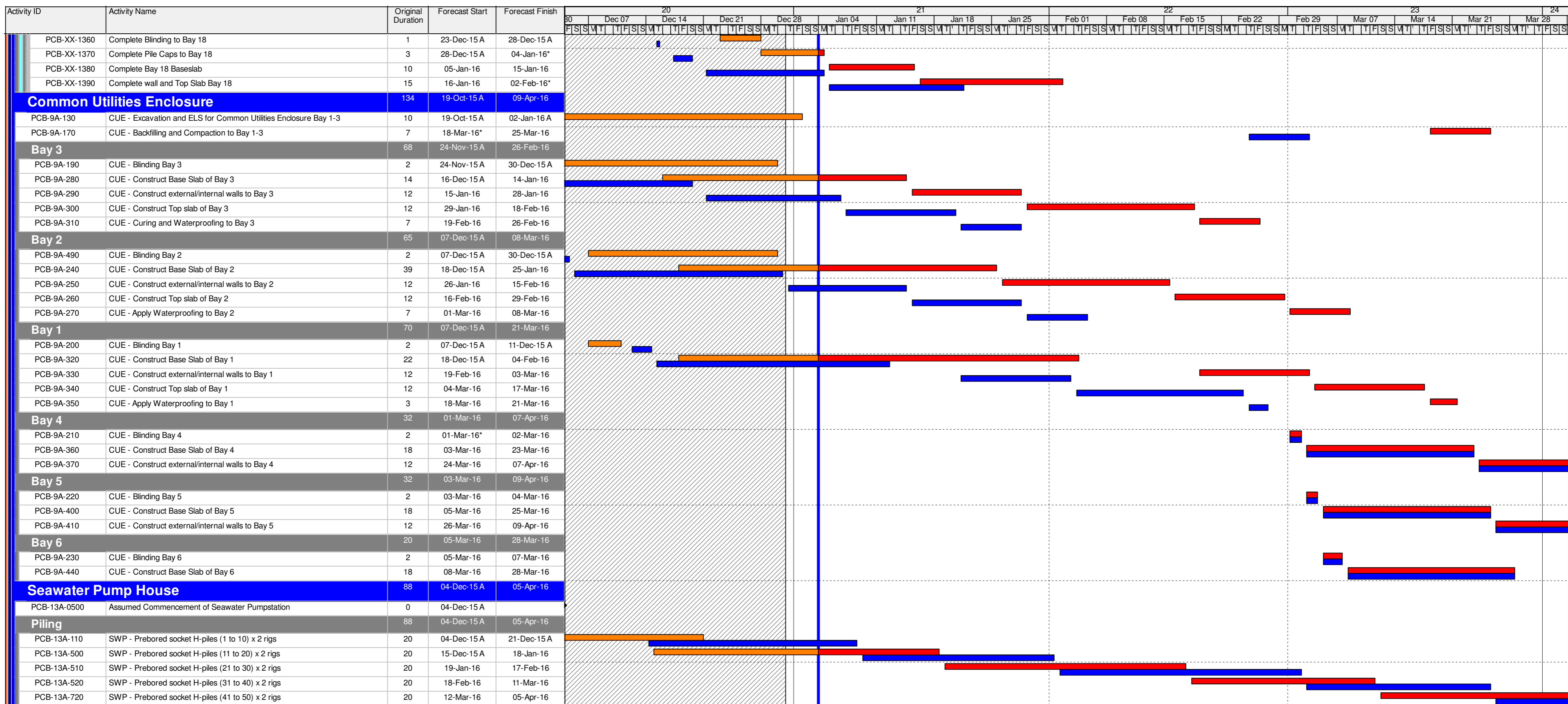


- 3MRP BAR
- Actual Work
- Remaining Work
- Critical Remaining Work
- ◆ Milestone

3MRP - Progress to 04-Jan-16

Date	Revision	Checked	Approved





- 3MRP BAR
- Actual Work
- Remaining Work
- Critical Remaining Work
- ◆ Milestone

**3MRP - Progress to 04-Jan-16**

Date	Revision	Checked	Approved