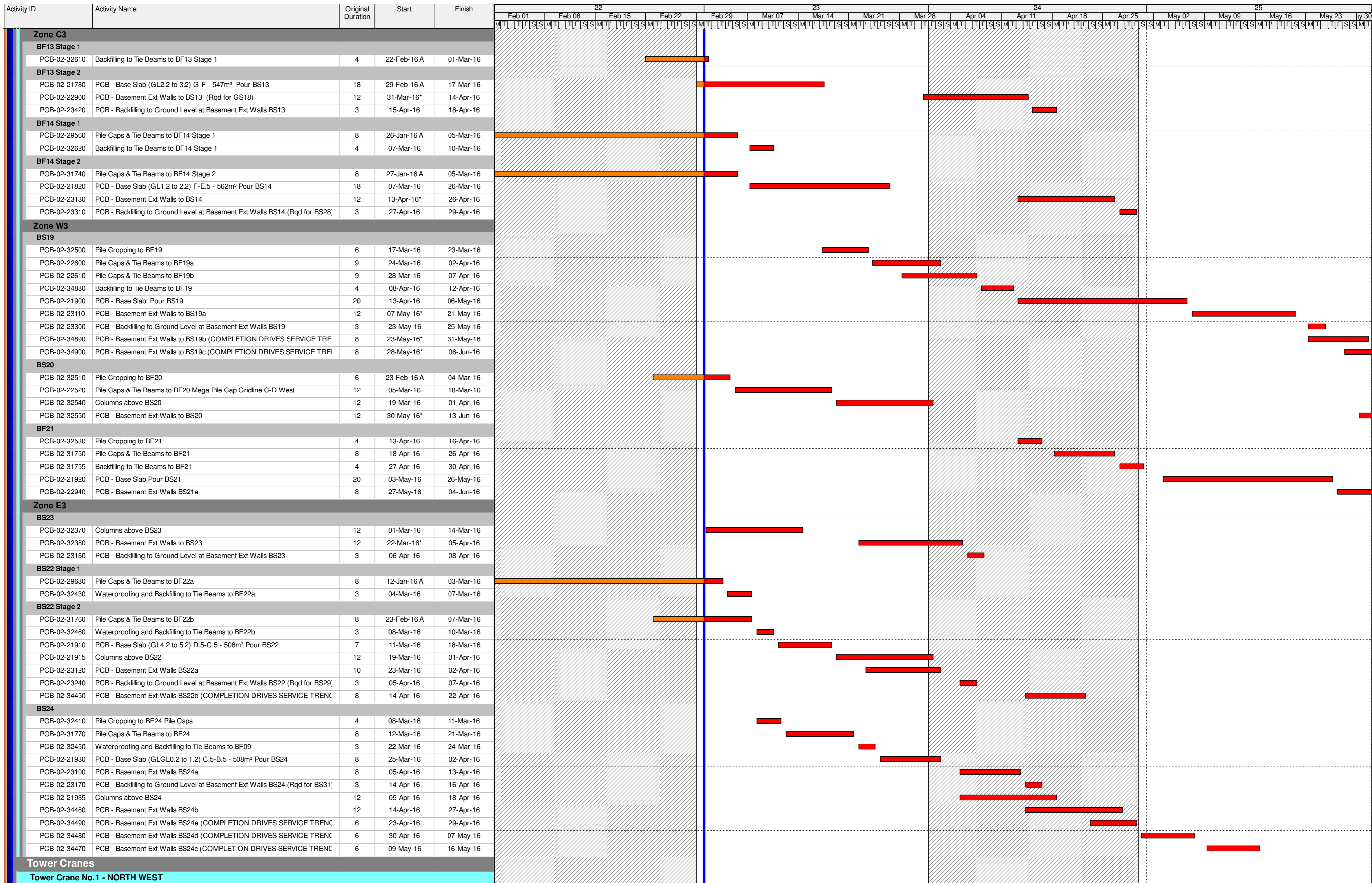


Activity ID	Activity Name	Original Duration	Start	Finish	2016																											
					Feb 01	Feb 08	Feb 15	Feb 22	Feb 29	Mar 07	Mar 14	Mar 21	Mar 28	Apr 04	Apr 11	Apr 18	Apr 25	May 02	May 09	May 16	May 23	May 30										
<b>HY/2013/01 HKZMB HKBCF - PCB - 3MRP - February 2016 (Mar 16 Onwards)</b>																																
<b>CONSTRUCTION</b>																																
<b>Passenger Clearance Building</b>																																
<b>Earthwork</b>																																
<b>Bulk Excavation (to -3.845 -1.495mPD)</b>																																
<b>North - 94,824m³</b>																																
<b>East - 47,412m³</b>																																
PCB-02-32900	PCB - Remaining Excavation for Basement Zone E3 (after Box Culvert)	8	24-Feb-16 A	07-Mar-16																												
<b>West - 47,412m³</b>																																
PCB-02-29740	PCB - Excavation for Basement (23,706m³) Zone W3 (BF19)	14	01-Mar-16	16-Mar-16*																												
PCB-02-1710	PCB - Complete Bulk Excavation for PCB	0		12-Apr-16																												
PCB-02-29750	PCB - Excavation for Basement (23,706m³) Zone W3 (BF21)	10	31-Mar-16*	12-Apr-16																												
<b>Pile Caps and Tie Beam Construction</b>																																
<b>Basement Tie Beams &amp; Pile Caps</b>																																
<b>Zone E2</b>																																
<b>BS11</b>																																
PCB-02-23070	PCB - Basement Ext Walls BS11	12	01-Mar-16	14-Mar-16																												
<b>BS12</b>																																
PCB-02-32130	BS12 Double Slab Walls	4	01-Mar-16	04-Mar-16																												
PCB-02-32140	BS12 Double Slab	4	05-Mar-16	09-Mar-16																												
PCB-02-23080	PCB - Basement Ext Walls BS12	12	01-Mar-16	14-Mar-16																												
<b>Zone W1</b>																																
<b>BS02</b>																																
PCB-02-21770	PCB - Basement Ext Walls to BS02	12	15-Feb-16 A	03-Mar-16																												
PCB-02-32220	Columns above BS02	6	07-Dec-15 A	05-Mar-16																												
<b>BF03 Stage 2</b>																																
PCB-02-21970	PCB - Base Slab (GL0.2 to 1.2) H - 336m³ Pour BS03	18	25-Jan-16 A	02-Mar-16																												
PCB-02-34400	PCB - Columns above BS03	8	01-Mar-16	09-Mar-16																												
PCB-02-34390	PCB - Basement Ext Walls to BS03a	8	03-Mar-16	11-Mar-16																												
PCB-02-23380	PCB - Remove Scaffold and preparation works for SPMT path	6	12-Mar-16	18-Mar-16																												
PCB-02-21740	PCB - Basement Ext Walls to BS03b (Rqd for BS25)	12	18-Mar-16	31-Mar-16																												
<b>BF01 Stage 2</b>																																
PCB-02-34410	PCB - Basement Ext Walls to BS01a	8	15-Feb-16 A	03-Mar-16																												
PCB-02-34420	PCB - Columns above BS01	8	15-Feb-16 A	07-Mar-16																												
PCB-02-23390	PCB - Remove Scaffold and preparation works for SPMT path	6	04-Mar-16	10-Mar-16																												
PCB-02-21760	PCB - Basement Ext Walls to BS01b (Rqd for BS25)	12	04-Mar-16	17-Mar-16																												
<b>Zone W2</b>																																
<b>BS08</b>																																
PCB-02-32230	Columns above BS08	6	24-Dec-15 A	10-Mar-16																												
PCB-02-22890	PCB - Basement Ext Walls to BS08	8	26-Mar-16*	05-Apr-16																												
<b>BF09 Stage 2</b>																																
PCB-02-31890	Backfilling to Tie Beams to BF09 Stage 2	4	01-Mar-16	04-Mar-16																												
PCB-02-21810	PCB - Base Slab Pour BS09	9	05-Mar-16	15-Mar-16																												
PCB-02-34430	PCB - columns above BS09	12	16-Mar-16	29-Mar-16																												
PCB-02-22910	PCB - Basement Ext Walls BS09	8	26-Mar-16	05-Apr-16																												
PCB-02-23270	PCB - Remove Scaffold and preparation works for SPMT path	6	06-Apr-16	12-Apr-16																												
<b>BS07</b>																																
PCB-02-21840	PCB - Base Slab Pour BS07	18	27-Feb-16 A	09-Mar-16																												
PCB-02-34440	PCB - columns above BS07	12	10-Mar-16	23-Mar-16																												
PCB-02-22880	PCB - Basement Ext Walls to BS07	12	12-Mar-16	25-Mar-16																												
PCB-02-23410	PCB - Remove Scaffold and preparation works for SPMT path	6	26-Mar-16	01-Apr-16																												
<b>Zone C1</b>																																
<b>BS18</b>																																
PCB-02-32190	Columns above BS18	7	25-Jan-16 A	02-Mar-16																												
PCB-02-23140	PCB - Basement Ext Walls BS18	12	01-Mar-16*	14-Mar-16																												
<b>Zone C2</b>																																
<b>BS15</b>																																
PCB-02-23020	PCB - Basement Ext Walls BS15 (Rqd for BS27)	12	15-Feb-16 A	07-Mar-16																												
PCB-02-32200	Columns above BS15	12	01-Mar-16	14-Mar-16																												
<b>BS16</b>																																
PCB-02-32210	Columns above BS16	14	01-Mar-16	16-Mar-16																												
PCB-02-22920	PCB - Basement Ext Walls BS16	12	23-Mar-16*	06-Apr-16																												

■ Actual Work  
■ Remaining Work  
■ Critical Remaining Work  
◆ Milestone

**3 Months Rolling Programme**

Date	Revision	Checked	Approved
01-Mar-16	3-Month Rolling Programme	SGJ	



- Actual Work
- Remaining Work
- Critical Remaining Work
- Milestone

**3 Months Rolling Programme**

Date	Revision	Checked	Approved
01-Mar-16	3-Month Rolling Programme	SGJ	

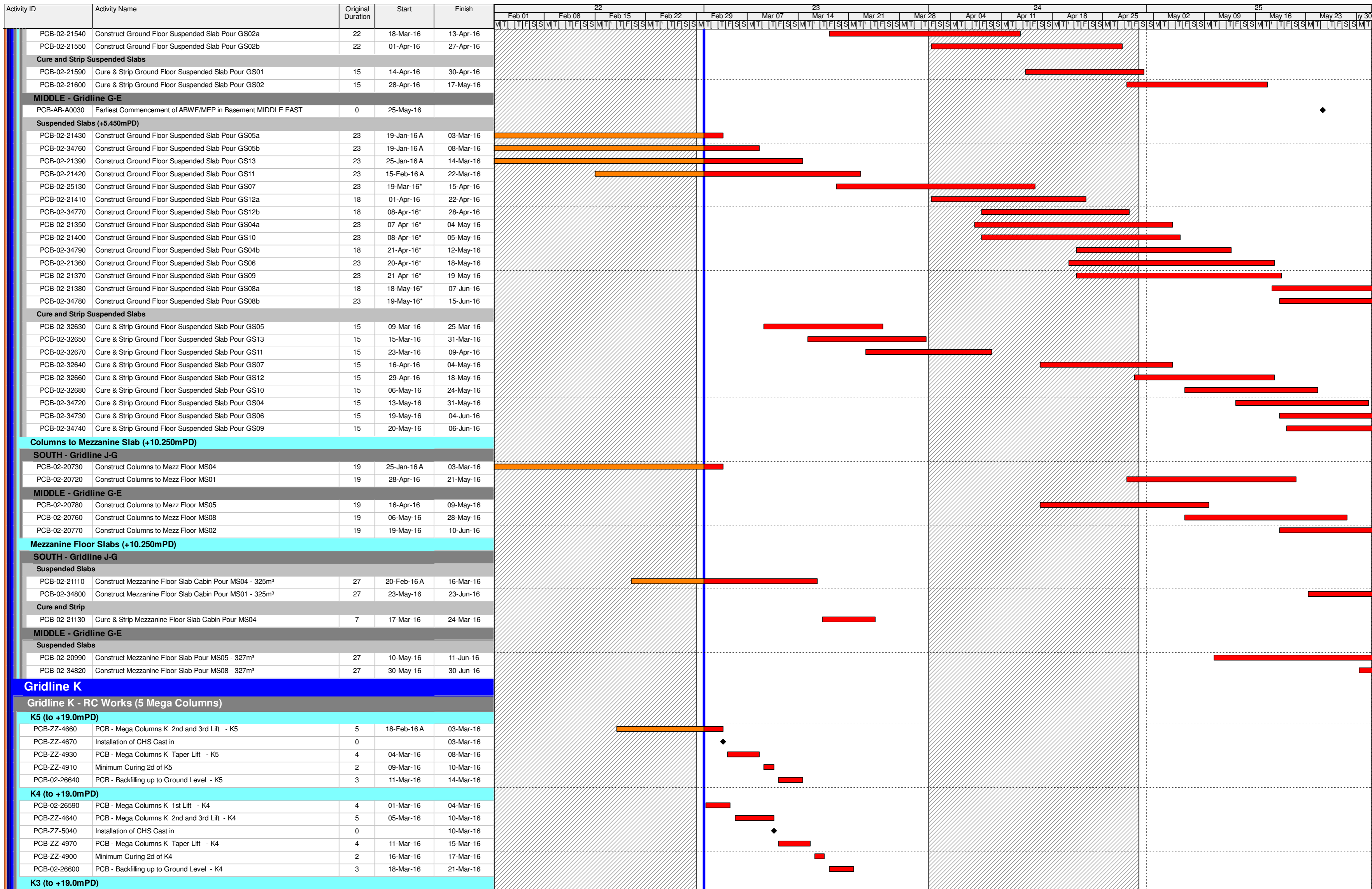
Activity ID	Activity Name	Original Duration	Start	Finish	22																						23							24							25																														
					Feb 01	Feb 08	Feb 15	Feb 22	Feb 29	Mar 07	Mar 14	Mar 21	Mar 28	Apr 04	Apr 11	Apr 18	Apr 25	May 02	May 09	May 16	May 23	May 30	Feb 01	Feb 08	Feb 15	Feb 22	Feb 29	Mar 07	Mar 14	Mar 21	Mar 28	Apr 04	Apr 11	Apr 18	Apr 25	May 02	May 09	May 16	May 23	May 30	Feb 01	Feb 08	Feb 15	Feb 22	Feb 29	Mar 07	Mar 14	Mar 21	Mar 28	Apr 04	Apr 11	Apr 18	Apr 25	May 02	May 09	May 16	May 23	May 30	Feb 01	Feb 08	Feb 15	Feb 22	Feb 29	Mar 07	Mar 14	Mar 21	Mar 28	Apr 04	Apr 11	Apr 18	Apr 25
PCB-02-22210	PCB(A1) - Construct Tower Crane Footings TC1	8	05-Mar-16	14-Mar-16	[Gantt bar]																						[Gantt bar]							[Gantt bar]							[Gantt bar]																														
PCB-02-22200	PCB(A1) - Erect Tower Crane TC1	6	15-Mar-16	21-Mar-16	[Gantt bar]																						[Gantt bar]							[Gantt bar]							[Gantt bar]																														
<b>Superstructure</b>																																																																							
<b>Ground Floor Foundations South</b>																																																																							
<b>Excavation for Service Trenches</b>																																																																							
PCB-02-24870	PCB - Excavation for Service Trench BS26	4	01-Mar-16*	04-Mar-16	[Gantt bar]																						[Gantt bar]							[Gantt bar]							[Gantt bar]																														
PCB-02-24880	PCB - Excavation for Service Trench BS27a	5	22-Mar-16*	26-Mar-16	[Gantt bar]																						[Gantt bar]							[Gantt bar]							[Gantt bar]																														
PCB-02-34370	PCB - Excavation for Service Trench BS27b	5	11-Apr-16*	15-Apr-16	[Gantt bar]																						[Gantt bar]							[Gantt bar]							[Gantt bar]																														
PCB-02-24450	PCB - Excavation for Service Trench BS25	5	29-Apr-16*	05-May-16	[Gantt bar]																						[Gantt bar]							[Gantt bar]							[Gantt bar]																														
<b>Waterproofing Trench Base slab</b>																																																																							
PCB-02-24920	PCB - Waterproofing Trench Base Slab B26	3	05-Mar-16	08-Mar-16	[Gantt bar]																						[Gantt bar]							[Gantt bar]							[Gantt bar]																														
PCB-02-24890	PCB - Waterproofing Trench Base Slab B27a	3	28-Mar-16	30-Mar-16	[Gantt bar]																						[Gantt bar]							[Gantt bar]							[Gantt bar]																														
PCB-02-34380	PCB - Waterproofing Trench Base Slab B27b	3	16-Apr-16	19-Apr-16	[Gantt bar]																						[Gantt bar]							[Gantt bar]							[Gantt bar]																														
PCB-02-24910	PCB - Waterproofing Trench Base Slab B25	3	06-May-16	09-May-16	[Gantt bar]																						[Gantt bar]							[Gantt bar]							[Gantt bar]																														
<b>Service Trench Slabs</b>																																																																							
PCB-02-21960	PCB - Service Trench Base Slab (GL4.2 to 5.2) H-G - BS26	8	09-Mar-16	17-Mar-16	[Gantt bar]																						[Gantt bar]							[Gantt bar]							[Gantt bar]																														
PCB-02-21940	PCB - Service Trench Base Slab (GL4.2 to 5.2) H - BS27a	8	31-Mar-16	09-Apr-16	[Gantt bar]																						[Gantt bar]							[Gantt bar]							[Gantt bar]																														
PCB-02-34330	PCB - Service Trench Base Slab (GL4.2 to 5.2) H - BS27b	8	20-Apr-16	28-Apr-16	[Gantt bar]																						[Gantt bar]							[Gantt bar]							[Gantt bar]																														
PCB-02-21950	PCB - Service Trench Base Slab (GL4.2 to 5.2) H - BS25	8	10-May-16	19-May-16	[Gantt bar]																						[Gantt bar]							[Gantt bar]							[Gantt bar]																														
<b>Service Trench Walls</b>																																																																							
PCB-02-22980	PCB - Basement Ext Walls to BS26	8	18-Mar-16	26-Mar-16	[Gantt bar]																						[Gantt bar]							[Gantt bar]							[Gantt bar]																														
PCB-02-23000	PCB - Basement Ext Walls to BS27a	8	11-Apr-16	19-Apr-16	[Gantt bar]																						[Gantt bar]							[Gantt bar]							[Gantt bar]																														
PCB-02-34340	PCB - Basement Ext Walls to BS27b	8	29-Apr-16	09-May-16	[Gantt bar]																						[Gantt bar]							[Gantt bar]							[Gantt bar]																														
PCB-02-22990	PCB - Basement Ext Walls to BS25	8	20-May-16	28-May-16	[Gantt bar]																						[Gantt bar]							[Gantt bar]							[Gantt bar]																														
<b>Waterproofing Trench Walls</b>																																																																							
PCB-02-24980	PCB - Waterproofing to BS26 Walls	3	28-Mar-16	30-Mar-16	[Gantt bar]																						[Gantt bar]							[Gantt bar]							[Gantt bar]																														
PCB-02-24960	PCB - Waterproofing to BS27a Walls	3	20-Apr-16	22-Apr-16	[Gantt bar]																						[Gantt bar]							[Gantt bar]							[Gantt bar]																														
PCB-02-34350	PCB - Waterproofing to BS27b Walls	3	10-May-16	12-May-16	[Gantt bar]																						[Gantt bar]							[Gantt bar]							[Gantt bar]																														
PCB-02-24970	PCB - Waterproofing to BS25 Walls	3	30-May-16	01-Jun-16	[Gantt bar]																						[Gantt bar]							[Gantt bar]							[Gantt bar]																														
<b>Backfilling behind Service Trench Walls</b>																																																																							
PCB-02-23430	PCB - Backfilling to Ground Level at Basement Ext Walls BS26	4	31-Mar-16	05-Apr-16	[Gantt bar]																						[Gantt bar]							[Gantt bar]							[Gantt bar]																														
PCB-02-23440	PCB - Backfilling to Ground Level at Basement Ext Walls BS27a	4	23-Apr-16	27-Apr-16	[Gantt bar]																						[Gantt bar]							[Gantt bar]							[Gantt bar]																														
PCB-02-34360	PCB - Backfilling to Ground Level at Basement Ext Walls BS27b	4	13-May-16	18-May-16	[Gantt bar]																						[Gantt bar]							[Gantt bar]							[Gantt bar]																														
<b>Excavate for Pile Caps and Beams</b>																																																																							
PCB-02-34500	PCB - Excavate Pile caps and Beams GF02c	3	30-Mar-16*	01-Apr-16	[Gantt bar]																						[Gantt bar]							[Gantt bar]							[Gantt bar]																														
PCB-02-24950	PCB - Excavate Pile caps and Beams GF19a	3	11-Apr-16*	13-Apr-16	[Gantt bar]																						[Gantt bar]							[Gantt bar]							[Gantt bar]																														
PCB-02-24940	PCB - Excavate Pile caps and Beams GF21	3	20-Apr-16*	22-Apr-16	[Gantt bar]																						[Gantt bar]							[Gantt bar]							[Gantt bar]																														
PCB-02-34510	PCB - Excavate Pile caps and Beams GF19b	3	26-May-16*	28-May-16	[Gantt bar]																						[Gantt bar]							[Gantt bar]							[Gantt bar]																														
<b>Pile Cropping</b>																																																																							
PCB-02-34540	Pile Cropping to GF02c	4	02-Apr-16	07-Apr-16	[Gantt bar]																						[Gantt bar]							[Gantt bar]							[Gantt bar]																														
PCB-02-23580	Pile Cropping to GF19a	4	14-Apr-16	18-Apr-16	[Gantt bar]																						[Gantt bar]							[Gantt bar]							[Gantt bar]																														
PCB-02-23550	Pile Cropping to GF21	4	23-Apr-16	27-Apr-16	[Gantt bar]																						[Gantt bar]							[Gantt bar]							[Gantt bar]																														
PCB-02-34550	Pile Cropping to GF19b	4	30-May-16	02-Jun-16	[Gantt bar]																						[Gantt bar]							[Gantt bar]							[Gantt bar]																														
<b>Pile Capping</b>																																																																							
PCB-02-34580	Pile Caps and Tie Beams to GF02c	8	08-Apr-16	16-Apr-16	[Gantt bar]																						[Gantt bar]							[Gantt bar]							[Gantt bar]																														
PCB-02-23590	Pile Caps and Tie Beams to GF19a	8	19-Apr-16	27-Apr-16	[Gantt bar]																						[Gantt bar]							[Gantt bar]							[Gantt bar]																														
PCB-02-23560	Pile Caps and Tie Beams to GF21	8	28-Apr-16	07-May-16	[Gantt bar]																						[Gantt bar]							[Gantt bar]							[Gantt bar]																														
<b>Water Proofing</b>																																																																							
PCB-02-34600	Waterproofing Pile Caps and Tie Beams to GF03c	2	01-Mar-16	02-Mar-16	[Gantt bar]																						[Gantt bar]							[Gantt bar]							[Gantt bar]																														
PCB-02-34620	Waterproofing Pile Caps and Tie Beams to GF02c	2	18-Apr-16	19-Apr-16	[Gantt bar]																						[Gantt bar]							[Gantt bar]							[Gantt bar]																														
PCB-02-24800	Waterproofing Pile Caps and Tie Beams to GF19a	2	28-Apr-16	29-Apr-16	[Gantt bar]																						[Gantt bar]							[Gantt bar]							[Gantt bar]																														
PCB-02-24790	Waterproofing Pile Caps and Tie Beams to GF21	2	09-May-16	10-May-16	[Gantt bar]																						[Gantt bar]							[Gantt bar]							[Gantt bar]																														
<b>Backfilling to Top Level of Ground Beams (+5.0mPD Generally)</b>																																																																							
PCB-02-34640	Backfilling to Tie Beams to GF03c	2	03-Mar-16	04-Mar-16	[Gantt bar]																						[Gantt bar]							[Gantt bar]							[Gantt bar]																														
PCB-02-34660	Backfilling to Tie Beams to GF02c	2	20-Apr-16	21-Apr-16	[Gantt bar]																						[Gantt bar]							[Gantt bar]							[Gantt bar]																														
PCB-02-23600	Backfilling to Tie Beams to GF19a	2	30-Apr-16	03-May-16	[Gantt bar]																						[Gantt bar]							[Gantt bar]							[Gantt bar]																														
PCB-02-23570	Backfilling to Tie Beams to GF21	2	11-May-16	12-May-16	[Gantt bar]																						[Gantt bar]							[Gantt bar]							[Gantt bar]																														
<b>Ground Slabs (+5.450mPD)</b>																																																																							
PCB-02-34680	Construct Ground Floor Base Slab GF03c	8	05-Mar-16	14-Mar-16	[Gantt bar]																						[Gantt bar]							[Gantt bar]							[Gantt bar]																														
PCB-02-34700	Construct Ground Floor Base Slab GF02c	8	22-Apr-16	30-Apr-16	[Gantt bar]																						[Gantt bar]							[Gantt bar]							[Gantt bar]																														
PCB-02-21530	Construct Ground Floor Base Slab GS19a	8	04-May-16	12-May-16	[Gantt bar]																						[Gantt bar]							[Gantt bar]							[Gantt bar]																														
PCB-02-21520	Construct Ground Floor Base Slab GS21	8	13-May-16	23-May-16	[Gantt bar]																						[Gantt bar]							[Gantt bar]							[Gantt bar]																														
<b>Ground Floor Slabs (+5.450mPD)</b>																																																																							
<b>SOUTH - Gridline J-G</b>																																																																							
PCB-AB-A0010	Earliest Commencement of ABWF/MEP in Basement SOUTH EAST	0	01-Mar-16		[Milestone]																																																																		
PCB-AB-A0020	Earliest Commencement of ABWF/MEP in Basement SOUTH WEST	0	18-May-16		[Milestone]																																																																		
<b>Suspended Slabs (+5.450mPD)</b>																																																																							

**3 Months Rolling Programme**

- Actual Work
- Remaining Work
- Critical Remaining Work
- ◆ Milestone

Date	Revision	Checked	Approved
01-Mar-16	3-Month Rolling Programme	SGJ	

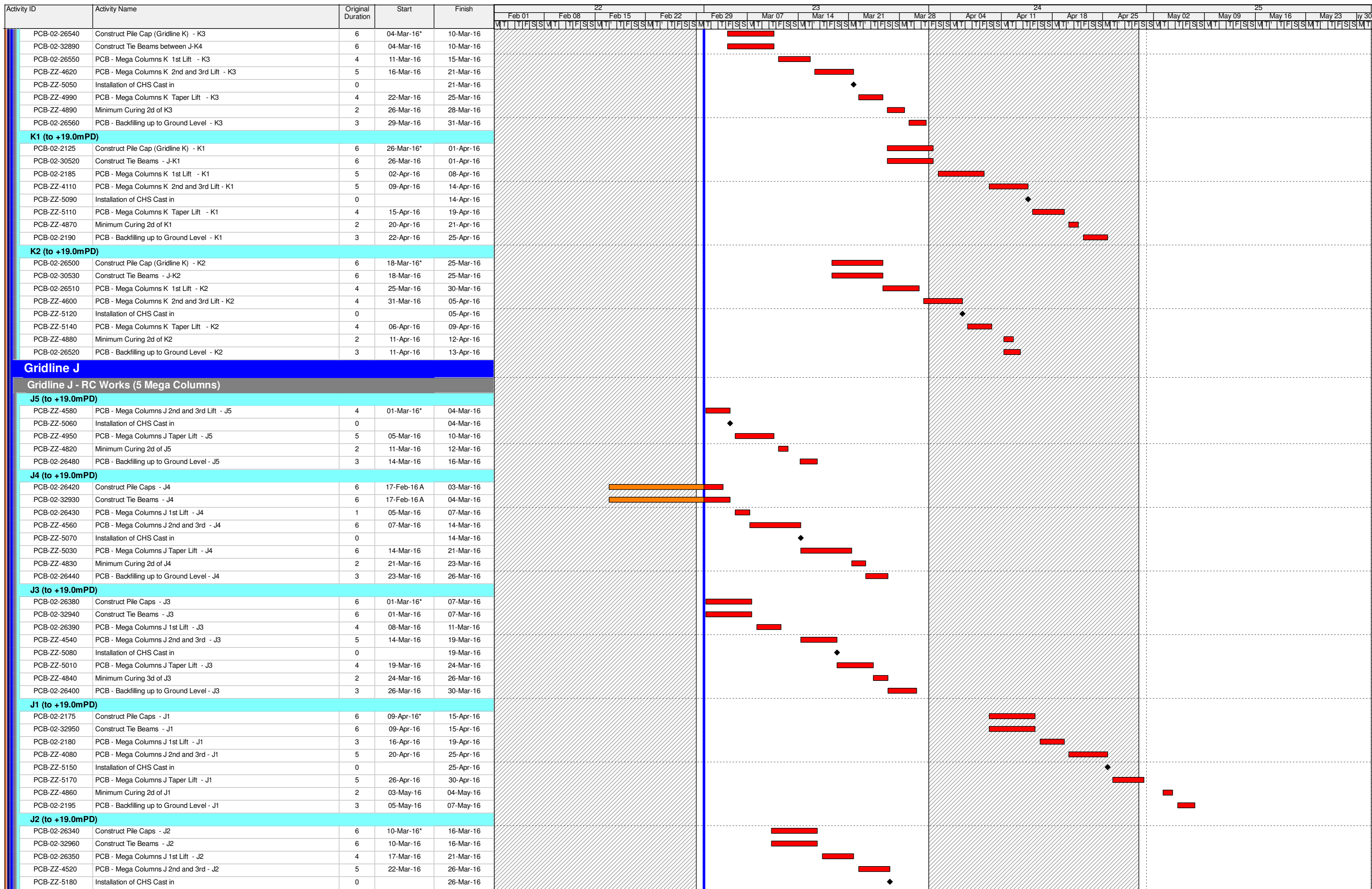




- Actual Work
- Remaining Work
- Critical Remaining Work
- ◆ Milestone

**3 Months Rolling Programme**

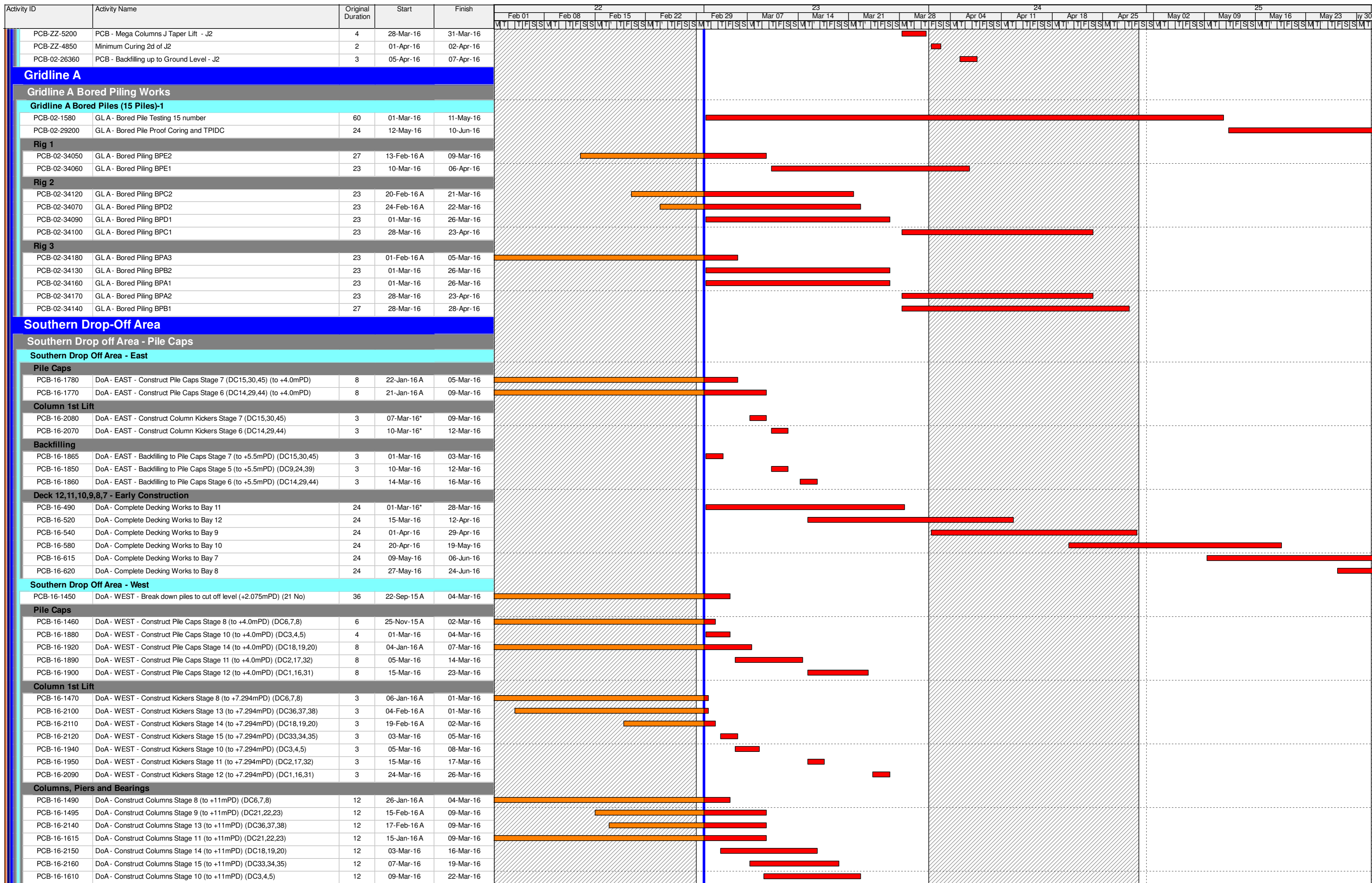
Date	Revision	Checked	Approved
01-Mar-16	3-Month Rolling Programme	SGJ	



- █ Actual Work
- █ Remaining Work
- █ Critical Remaining Work
- ◆ Milestone

**3 Months Rolling Programme**

Date	Revision	Checked	Approved
01-Mar-16	3-Month Rolling Programme	SGJ	



- Actual Work
- Remaining Work
- Critical Remaining Work
- ◆ Milestone

**3 Months Rolling Programme**

Date	Revision	Checked	Approved
01-Mar-16	3-Month Rolling Programme	SGJ	



Activity ID	Activity Name	Original Duration	Start	Finish	2016																											
					Feb 01	Feb 08	Feb 15	Feb 22	Feb 29	Mar 07	Mar 14	Mar 21	Mar 28	Apr 04	Apr 11	Apr 18	Apr 25	May 02	May 09	May 16	May 23	May 30										
PCB-16-1625	DoA - Construct Columns Stage 12 (to +11mPD) (DC1,16,31)	12	28-Mar-16	11-Apr-16																												
<b>Backfilling</b>																																
PCB-16-1465	DoA - WEST - Backfilling to Pile Caps Stage 8 (to +4.0mPD) (DC6,7,8)	3	05-Mar-16	08-Mar-16																												
PCB-16-2000	DoA - WEST - Backfilling to Pile Caps Stage 13 (to +4.0mPD) (DC36,37,38)	3	10-Mar-16	12-Mar-16																												
PCB-16-1476	DoA - WEST - Backfilling to Pile Caps Stage 9 (to +4.0mPD) (DC21,22,23)	3	10-Mar-16	12-Mar-16																												
PCB-16-1985	DoA - WEST - Backfilling to Pile Caps Stage 11 (to +4.0mPD) (DC2,17,32)	3	10-Mar-16	12-Mar-16																												
PCB-16-2040	DoA - WEST - Backfilling to Pile Caps Stage 14 (to +4.0mPD) (DC18,19,20)	3	17-Mar-16	19-Mar-16																												
PCB-16-2050	DoA - WEST - Backfilling to Pile Caps Stage 15 (to +4.0mPD) (DC33,34,35)	3	21-Mar-16	23-Mar-16																												
PCB-16-1480	DoA - WEST - Backfilling to Pile Caps Stage 10 (to +4.0mPD) (DC36,37,38)	3	23-Mar-16	25-Mar-16																												
PCB-16-1990	DoA - WEST - Backfilling to Pile Caps Stage 12 (to +4.0mPD) (DC1,16,31)	3	12-Apr-16	14-Apr-16																												
<b>Northern Footbridge Links</b>																																
<b>Northern Footbridge Link Bored Piling</b>																																
<b>Northern Footbridge Piles in Portion C (16 Piles)</b>																																
PCB-02-1715	NFB (C) - Bored Pile Testing 16 number	60	21-May-16	19-Jul-16																												
<b>Rig 1</b>																																
PCB-02-11260	NFB (C) - Bored Piling NF-N4-1-1	23	01-Mar-16	23-Mar-16																												
PCB-02-11270	NFB (C) - Bored Piling NF-N4-1-2	23	24-Mar-16	15-Apr-16																												
PCB-02-11280	NFB (C) - Bored Piling NF-A4-2	23	16-Apr-16	08-May-16																												
PCB-02-11290	NFB (C) - Bored Piling NF-A4-1	23	09-May-16	31-May-16																												
<b>Rig 2</b>																																
PCB-02-11300	NFB (C) - Bored Piling NF-N1-1-1	23	03-May-16*	25-May-16																												
<b>Rig 3</b>																																
PCB-02-11310	NFB (C) - Bored Piling NF-N1-1-2	23	26-May-16	17-Jun-16																												
<b>Rig 4</b>																																
PCB-02-11320	NFB (C) - Bored Piling NF-A3-1	23	29-Mar-16*	20-Apr-16																												
PCB-02-11330	NFB (C) - Bored Piling NF-A3-2	23	21-Apr-16	13-May-16																												
PCB-02-11340	NFB (C) - Bored Piling NF-N3-1-1	23	14-May-16	05-Jun-16																												
<b>Rig 5</b>																																
PCB-02-11380	NFB (C) - Bored Piling NF-N2-1-1	23	15-Mar-16*	06-Apr-16																												
PCB-02-11390	NFB (C) - Bored Piling NF-N2-1-2	23	07-Apr-16	29-Apr-16																												
PCB-02-11400	NFB (C) - Bored Piling NF-A1-1	23	30-Apr-16	22-May-16																												
PCB-02-11410	NFB (C) - Bored Piling NF-A1-2	23	23-May-16	14-Jun-16																												
<b>Box Culvert A</b>																																
<b>Bored Piling</b>																																
<b>Portion B - Box Culvert A (14 Piles)</b>																																
<b>Rig 1</b>																																
PCB-02-34220	BCA (B) - Construct Bored Pile BP51	21	16-Feb-16 A	11-Mar-16																												
PCB-02-34210	BCA (B) - Construct Bored Pile BP53	18	22-Feb-16 A	14-Mar-16																												
<b>Rig 2</b>																																
PCB-02-34250	BCA (B) - Construct Bored Pile BP57	18	01-Mar-16	21-Mar-16																												
PCB-02-34260	BCA (B) - Construct Bored Pile BP55	18	22-Mar-16	12-Apr-16																												
<b>Rig 3</b>																																
PCB-02-34270	BCA (B) - Construct Bored Pile BP60	18	20-Feb-16 A	12-Mar-16																												
PCB-02-34280	BCA (B) - Construct Bored Pile BP59	18	14-Mar-16	02-Apr-16																												
PCB-09-1980	BCA (B) - Complete Bored Piles Sonic/Interface Testing	24	13-Apr-16	11-May-16																												
<b>Rig 4 - Remaining Piles at Outfall</b>																																
PCB-02-34290	BCA (B) - Construct Bored Pile BP61	18	23-Jan-16 A	05-Mar-16																												
PCB-02-34300	BCA (B) - Construct Bored Pile BP64	18	28-Jan-16 A	07-Mar-16																												
PCB-02-34310	BCA (B) - Construct Bored Pile BP62	18	07-Mar-16*	26-Mar-16																												
PCB-02-34320	BCA (B) - Construct Bored Pile BP63	18	28-Mar-16*	18-Apr-16																												
PCB-09-2030	BCA (B) - Complete Bored Piles Sonic/Interface Testing	24	19-Apr-16*	18-May-16																												
<b>RC Structures</b>																																
<b>Portion A1 &amp; A2 East</b>																																
<b>East</b>																																
PCB-09-1970	BCA (A1) Backfilling to Ground Level (Bays 1 to 10)	12	22-Jan-16 A	07-Mar-16																												
PCB-09-1960	BCA (A1) Remove Sheetpile and make good (Bays 1 to 10)	12	01-Mar-16	14-Mar-16																												
<b>West</b>																																
<b>Stage 3</b>																																
PCB-09-1170	BCA (A1) Backfilling to Ground Level (150m) (Bays 11 to 18)	11	26-Feb-16 A	12-Mar-16																												
PCB-09-1180	BCA (A1) Remove Sheetpile and make good (300m) (Bays 11 to 18)	12	07-Mar-16	19-Mar-16																												
<b>Portion A2 ( West)</b>																																
<b>Portion A2 ( West)</b>																																
PCB-09-1140	Complete Piling and Testing in Area A2 (West)	0	22-Mar-16*																													
PCB-09-1150	BCA (A2W) Sheetpiling (60m x 2) (Bays 21 to 24)	12	22-Mar-16	05-Apr-16																												
PCB-09-1160	BCA (A2W) Bulk Excavation (60m) (Bays 21 to 24)	12	06-Apr-16	19-Apr-16																												
<b>Bay 19</b>																																

- Actual Work
- Remaining Work
- Critical Remaining Work
- Milestone





**3 Months Rolling Programme**

Date	Revision	Checked	Approved
01-Mar-16	3-Month Rolling Programme	SGJ	





Activity ID	Activity Name	Original Duration	Start	Finish	22							23							24							25						
					Feb 01	Feb 08	Feb 15	Feb 22	Feb 29	Mar 07	Mar 14	Mar 21	Mar 28	Apr 04	Apr 11	Apr 18	Apr 25	May 02	May 09	May 16	May 23	May 30										
<b>Seawater Cooling Mains and Chilled Water Supply</b>																																
<b>Seawater Intake &amp; Discharge</b>																																
<b>RC Structures</b>																																
<b>Seawater Intake Culvert</b>																																
<b>Stage 1</b>																																
PCB-14-500	SIC - Open Cut Excavation through Seawall	12	18-Apr-16*	30-Apr-16																												
PCB-14-190	SIC - Install twin DCS pipework to Intake structure (43m)	15	09-May-16*	26-May-16																												
PCB-14-200	SIC - Float in and position pre-cast intake structure	28	27-May-16	29-Jun-16																												
<b>Seawater Outfall Culvert</b>																																
PCB-14-2080	C2 - Contract Hy/2013/02 complete Bore Piling at Abutment	85	14-Dec-15 A	30-Mar-16																												
PCB-14-2100	C2 - Reclamation Contractor Complete Seawall	0		31-Mar-16*																												
PCB-14-2030	SOC - Install Sheetpiles to Cofferdam	12	31-Mar-16*	14-Apr-16																												
PCB-14-2040	SOC - Excavation and ELS	12	15-Apr-16	28-Apr-16																												
PCB-14-240	SOC - Construct Seawater Outfall Structure	40	29-Apr-16	17-Jun-16																												
PCB-14-2090	C2 - Contract Hy/2013/02 Construct Abutment Pilecap and Wall	74	31-Mar-16	29-Jun-16																												
<b>Seawater pipelines</b>																																
<b>District Cooling System - West</b>																																
PCB-14-120	DCS(A1) - Laying seawater intake pipes (2x 1m dia) 50m	15	08-Mar-16*	24-Mar-16																												
PCB-14-100	DCS(A2) - Laying seawater intake pipes (2x 1m dia) 170m	51	25-Mar-16	26-May-16																												
<b>District Cooling System - East</b>																																
PCB-14-110	DCS (A2) - Laying seawater discharge pipes (2x 1m dia) 180m	54	01-Mar-16	04-May-16																												
PCB-14-130	DCS (A1) - Laying seawater discharge pipes (2x 1m dia) 70m	22	04-May-16*	30-May-16																												
PCB-14-180	DCS (C) - Laying seawater discharge pipes (2x 1m dia) 200m	60	31-May-16	10-Aug-16																												

-  Actual Work
-  Remaining Work
-  Critical Remaining Work
-  Milestone

**3 Months Rolling Programme**

Date	Revision	Checked	Approved
01-Mar-16	3-Month Rolling Programme	SGJ	