

- Actual Work
- Remaining Work
- Critical Remaining Work
- ◆ Milestone

3 MONTH ROLLING PROGRAMME

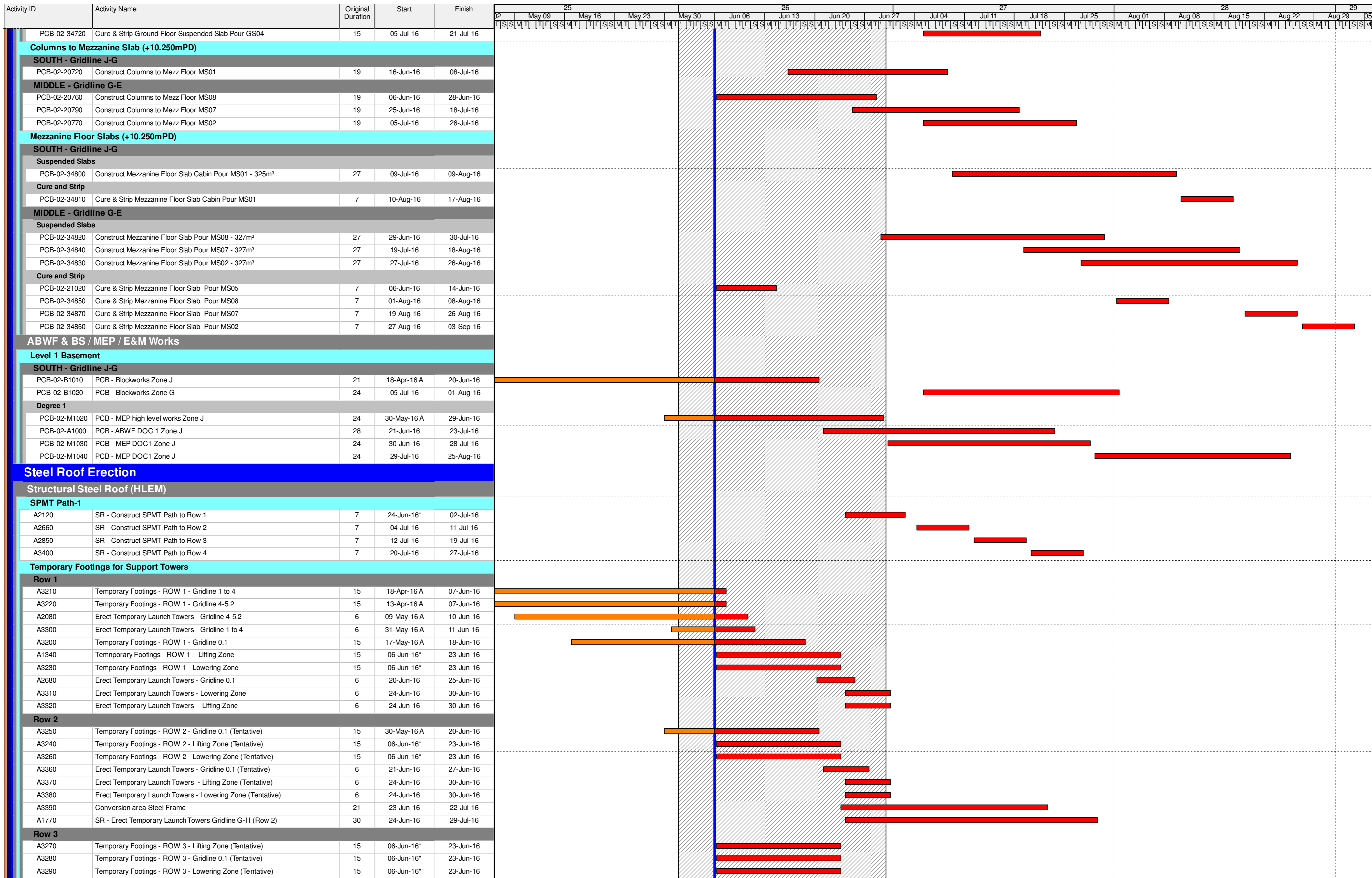
Date	Revision	Checked	Approved
	3-Month Rolling Programme		

Activity ID	Activity Name	Original Duration	Start	Finish	25																											
					02	09	16	23	30	06	13	20	27	04	11	18	25	01	08	15	22	29	05									
<b>Service Trough Walls</b>																																
A1840	PCB - Basement Ext Walls to BS27a - 2 pairs (Extended Working Hours)	10	17-May-16 A	11-Jun-16	[Gantt bar: 17-May-16 to 11-Jun-16]																											
A1790	PCB - Basement Ext Walls to BS27b - 2 pairs (Extended Working Hours)	10	20-Jun-16	29-Jun-16	[Gantt bar: 20-Jun-16 to 29-Jun-16]																											
A2110	PCB - Basement Ext Walls to BS25 - 2 pairs (Extended Working Hours)	10	25-Jun-16	04-Jul-16	[Gantt bar: 25-Jun-16 to 04-Jul-16]																											
<b>Waterproofing Trench Walls</b>																																
A2000	PCB - Waterproofing to BS27a Walls	3	12-Jun-16	14-Jun-16	[Gantt bar: 12-Jun-16 to 14-Jun-16]																											
A1910	PCB - Waterproofing to BS27b Walls	3	30-Jun-16	02-Jul-16	[Gantt bar: 30-Jun-16 to 02-Jul-16]																											
A2220	PCB - Waterproofing to BS25 Walls	3	05-Jul-16	07-Jul-16	[Gantt bar: 05-Jul-16 to 07-Jul-16]																											
<b>Backfilling behind Service Trough Walls</b>																																
A2100	PCB - Backfilling to Ground Level at Basement Ext Walls BS27a	4	15-Jun-16	18-Jun-16	[Gantt bar: 15-Jun-16 to 18-Jun-16]																											
A2060	PCB - Backfilling to Ground Level at Basement Ext Walls BS27b	4	03-Jul-16	06-Jul-16	[Gantt bar: 03-Jul-16 to 06-Jul-16]																											
A2360	PCB - Backfilling to Ground Level at Basement Ext Walls BS25	4	08-Jul-16	11-Jul-16	[Gantt bar: 08-Jul-16 to 11-Jul-16]																											
<b>Excavate for Pile Caps and Beams</b>																																
A2230	PCB - Excavate Pile caps and Beams GF20a Middle South	5	07-Jul-16	11-Jul-16	[Gantt bar: 07-Jul-16 to 11-Jul-16]																											
A2300	PCB - Excavate Pile caps and Beams GF18 - North West Corner	5	12-Jul-16	16-Jul-16	[Gantt bar: 12-Jul-16 to 16-Jul-16]																											
A2290	PCB - Excavate Pile caps and Beams GF20b - South West Corner	5	17-Jul-16	21-Jul-16	[Gantt bar: 17-Jul-16 to 21-Jul-16]																											
<b>Pile Cropping</b>																																
A2340	Pile Cropping to GF20a Middle South	6	12-Jul-16	17-Jul-16	[Gantt bar: 12-Jul-16 to 17-Jul-16]																											
A2380	Pile Cropping to GF18 - North West Corner	6	17-Jul-16	22-Jul-16	[Gantt bar: 17-Jul-16 to 22-Jul-16]																											
A2390	Pile Cropping to GF20b - South West Corner	6	22-Jul-16	27-Jul-16	[Gantt bar: 22-Jul-16 to 27-Jul-16]																											
<b>Pile Capping</b>																																
A2400	Pile Caps and Tie Beams to GF21 - South East Corner (Extended Working Hc	10	06-Jun-16	15-Jun-16	[Gantt bar: 06-Jun-16 to 15-Jun-16]																											
A2690	Pile Caps and Tie Beams to GF19b (Extended Working Hours) Middle North	10	06-Jun-16	15-Jun-16	[Gantt bar: 06-Jun-16 to 15-Jun-16]																											
A2480	Pile Caps and Tie Beams to GF20a (Extended Working Hours) Middle South	10	18-Jul-16	27-Jul-16	[Gantt bar: 18-Jul-16 to 27-Jul-16]																											
A2510	Pile Caps and Tie Beams to GF18 - North West Corner (Extended Working Hc	10	23-Jul-16	01-Aug-16	[Gantt bar: 23-Jul-16 to 01-Aug-16]																											
A2520	Pile Caps and Tie Beams to GF20b - South West Corner (Extended Working I	10	28-Jul-16	06-Aug-16	[Gantt bar: 28-Jul-16 to 06-Aug-16]																											
<b>Water Proofing</b>																																
A2440	Waterproofing Pile Caps and Tie Beams to GF21 - South East Corner	4	16-Jun-16	19-Jun-16	[Gantt bar: 16-Jun-16 to 19-Jun-16]																											
A2740	Waterproofing Pile Caps and Tie Beams to GF19b Middle North	4	16-Jun-16	19-Jun-16	[Gantt bar: 16-Jun-16 to 19-Jun-16]																											
A2610	Waterproofing Pile Caps and Tie Beams to GF20a Middle South	4	28-Jul-16	31-Jul-16	[Gantt bar: 28-Jul-16 to 31-Jul-16]																											
A2640	Waterproofing Pile Caps and Tie Beams to GF18 - North West Corner	4	02-Aug-16	05-Aug-16	[Gantt bar: 02-Aug-16 to 05-Aug-16]																											
A2650	Waterproofing Pile Caps and Tie Beams to GF20b - South West Corner	4	07-Aug-16	10-Aug-16	[Gantt bar: 07-Aug-16 to 10-Aug-16]																											
<b>Backfilling to Top Level of Ground Beams (+5.0mPD Generally)</b>																																
A2580	Backfilling to Tie Beams to GF21 - South East Corner	4	20-Jun-16	23-Jun-16	[Gantt bar: 20-Jun-16 to 23-Jun-16]																											
A2760	Backfilling to Tie Beams to GF19b Middle North	4	20-Jun-16	23-Jun-16	[Gantt bar: 20-Jun-16 to 23-Jun-16]																											
A2670	Backfilling to Tie Beams to GF20a Middle South	4	01-Aug-16	04-Aug-16	[Gantt bar: 01-Aug-16 to 04-Aug-16]																											
A2700	Backfilling to Tie Beams to GF18 - North West Corner	4	06-Aug-16	09-Aug-16	[Gantt bar: 06-Aug-16 to 09-Aug-16]																											
A2710	Backfilling to Tie Beams to GF20b - South West Corner	4	11-Aug-16	14-Aug-16	[Gantt bar: 11-Aug-16 to 14-Aug-16]																											
<b>Ground Slabs (+5.450mPD)</b>																																
A2720	Construct Ground Floor Base Slab GS21 - South East Corner	14	24-Jun-16	07-Jul-16	[Gantt bar: 24-Jun-16 to 07-Jul-16]																											
A2820	Construct Ground Floor Base Slab GS19b Middle North	15	24-Jun-16	08-Jul-16	[Gantt bar: 24-Jun-16 to 08-Jul-16]																											
A2750	Construct Ground Floor Base Slab GS20a Middle South	15	05-Aug-16	19-Aug-16	[Gantt bar: 05-Aug-16 to 19-Aug-16]																											
A2770	Construct Ground Floor Base Slab GS18 - North West Corner	12	10-Aug-16	21-Aug-16*	[Gantt bar: 10-Aug-16 to 21-Aug-16*]																											
A2780	Construct Ground Floor Base Slab GS20b - South West Corner	14	15-Aug-16	28-Aug-16*	[Gantt bar: 15-Aug-16 to 28-Aug-16*]																											
<b>Ground Floor Slabs (+5.450mPD)</b>																																
<b>SOUTH - Gridline J-G</b>																																
PCB-AB-A0020	Earliest Commencement of ABWF/MEP in Basement SOUTH WEST	0	05-Jul-16		[Milestone: 05-Jul-16]																											
<b>Suspended Slabs (+5.450mPD)</b>																																
PCB-02-21550	Construct Ground Floor Suspended Slab Pour GS02b	22	18-May-16 A	15-Jun-16	[Gantt bar: 18-May-16 to 15-Jun-16]																											
<b>Cure and Strip Suspended Slabs</b>																																
PCB-02-21590	Cure & Strip Ground Floor Suspended Slab Pour GS02a	15	06-Jun-16	23-Jun-16	[Gantt bar: 06-Jun-16 to 23-Jun-16]																											
PCB-02-21600	Cure & Strip Ground Floor Suspended Slab Pour GS02b	15	16-Jun-16	04-Jul-16	[Gantt bar: 16-Jun-16 to 04-Jul-16]																											
<b>MIDDLE - Gridline G-E</b>																																
PCB-AB-A0030	Earliest Commencement of ABWF/MEP in Basement MIDDLE EAST	0	24-Jun-16		[Milestone: 24-Jun-16]																											
PCB-AB-A0040	Earliest Commencement of ABWF/MEP in Basement MIDDLE WEST	0	16-Jul-16		[Milestone: 16-Jul-16]																											
<b>Suspended Slabs (+5.450mPD)</b>																																
PCB-02-34790	Construct Ground Floor Suspended Slab Pour GS04b	18	25-May-16 A	22-Jun-16	[Gantt bar: 25-May-16 to 22-Jun-16]																											
PCB-02-34780	Construct Ground Floor Suspended Slab Pour GS08b	23	23-May-16 A	24-Jun-16	[Gantt bar: 23-May-16 to 24-Jun-16]																											
PCB-02-21380	Construct Ground Floor Suspended Slab Pour GS08a	18	06-Jun-16*	27-Jun-16	[Gantt bar: 06-Jun-16* to 27-Jun-16]																											
PCB-02-21350	Construct Ground Floor Suspended Slab Pour GS04a	23	06-Jun-16*	04-Jul-16	[Gantt bar: 06-Jun-16* to 04-Jul-16]																											
PCB-02-21360	Construct Ground Floor Suspended Slab Pour GS06	23	06-Jun-16*	04-Jul-16	[Gantt bar: 06-Jun-16* to 04-Jul-16]																											
<b>Cure and Strip Suspended Slabs</b>																																
PCB-02-32670	Cure & Strip Ground Floor Suspended Slab Pour GS11	15	06-Jun-16	23-Jun-16	[Gantt bar: 06-Jun-16 to 23-Jun-16]																											
PCB-02-32680	Cure & Strip Ground Floor Suspended Slab Pour GS10	15	06-Jun-16	23-Jun-16	[Gantt bar: 06-Jun-16 to 23-Jun-16]																											
PCB-02-34740	Cure & Strip Ground Floor Suspended Slab Pour GS09	15	06-Jun-16	23-Jun-16	[Gantt bar: 06-Jun-16 to 23-Jun-16]																											
PCB-02-34750	Cure & Strip Ground Floor Suspended Slab Pour GS08	15	28-Jun-16	15-Jul-16	[Gantt bar: 28-Jun-16 to 15-Jul-16]																											
PCB-02-34730	Cure & Strip Ground Floor Suspended Slab Pour GS06	15	05-Jul-16	21-Jul-16	[Gantt bar: 05-Jul-16 to 21-Jul-16]																											

- █ Actual Work
- █ Remaining Work
- █ Critical Remaining Work
- ◆ Milestone

**3 MONTH ROLLING PROGRAMME**

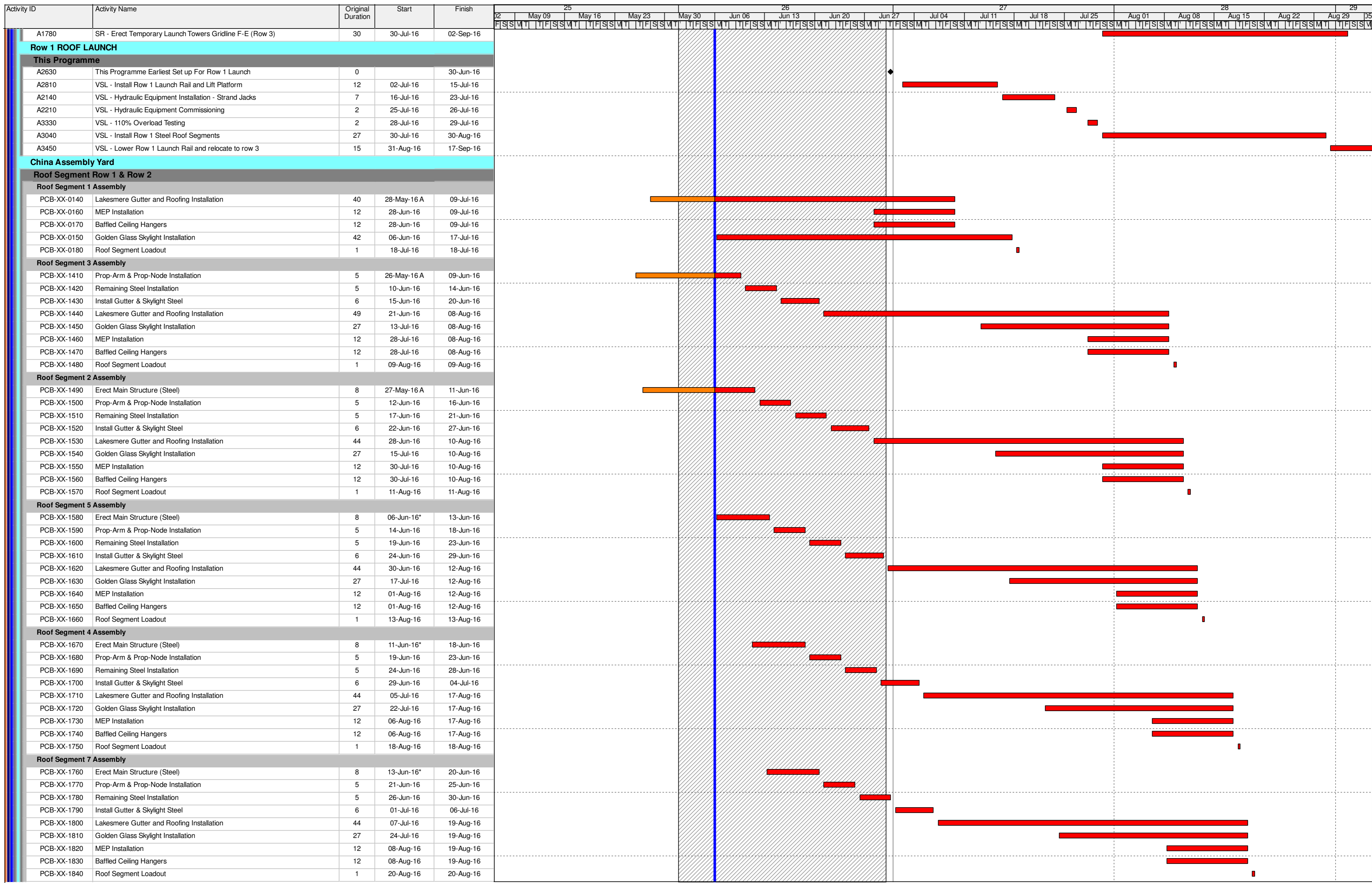
Date	Revision	Checked	Approved
	3-Month Rolling Programme		



- Actual Work
- Remaining Work
- Critical Remaining Work
- ◆ Milestone

3 MONTH ROLLING PROGRAMME

Date	Revision	Checked	Approved
	3-Month Rolling Programme		



- Actual Work
- Remaining Work
- Critical Remaining Work
- ◆ Milestone

**3 MONTH ROLLING PROGRAMME**

Date	Revision	Checked	Approved
	3-Month Rolling Programme		

Activity ID	Activity Name	Original Duration	Start	Finish	25																											
					May 09	May 16	May 23	May 30	Jun 06	Jun 13	Jun 20	Jun 27	Jul 04	Jul 11	Jul 18	Jul 25	Aug 01	Aug 08	Aug 15	Aug 22	Aug 29	05										
<b>Roof Segment 6 Assembly</b>																																
PCB-XX-2300	Erect Main Structure (Steel)	8	16-Jun-16*	23-Jun-16																												
PCB-XX-2310	Prop-Arm & Prop-Node Installation	5	24-Jun-16	28-Jun-16																												
PCB-XX-2320	Remaining Steel Installation	5	29-Jun-16	03-Jul-16																												
PCB-XX-2330	Install Gutter & Skylight Steel	6	04-Jul-16	09-Jul-16																												
PCB-XX-2340	Lakesmere Gutter and Roofing Installation	44	10-Jul-16	22-Aug-16																												
PCB-XX-2350	Golden Glass Skylight Installation	27	27-Jul-16	22-Aug-16																												
PCB-XX-2360	MEP Installation	12	11-Aug-16	22-Aug-16																												
PCB-XX-2370	Baffled Ceiling Hangers	12	11-Aug-16	22-Aug-16																												
PCB-XX-2380	Roof Segment Loadout	1	23-Aug-16	23-Aug-16																												
<b>Roof Segment 9 Assembly</b>																																
PCB-XX-2210	Erect Main Structure (Steel)	8	20-Jun-16*	27-Jun-16																												
PCB-XX-2220	Prop-Arm & Prop-Node Installation	5	28-Jun-16	02-Jul-16																												
PCB-XX-2230	Remaining Steel Installation	5	03-Jul-16	07-Jul-16																												
PCB-XX-2240	Install Gutter & Skylight Steel	6	08-Jul-16	13-Jul-16																												
PCB-XX-2250	Lakesmere Gutter and Roofing Installation	44	14-Jul-16	26-Aug-16																												
PCB-XX-2260	Golden Glass Skylight Installation	27	31-Jul-16	26-Aug-16																												
PCB-XX-2270	MEP Installation	12	15-Aug-16	26-Aug-16																												
PCB-XX-2280	Baffled Ceiling Hangers	12	15-Aug-16	26-Aug-16																												
PCB-XX-2290	Roof Segment Loadout	1	27-Aug-16	27-Aug-16																												
<b>Roof Segment 8 Assembly</b>																																
PCB-XX-2120	Erect Main Structure (Steel)	8	24-Jun-16*	01-Jul-16																												
PCB-XX-2130	Prop-Arm & Prop-Node Installation	5	02-Jul-16	06-Jul-16																												
PCB-XX-2140	Remaining Steel Installation	5	07-Jul-16	11-Jul-16																												
PCB-XX-2150	Install Gutter & Skylight Steel	6	12-Jul-16	17-Jul-16																												
PCB-XX-2160	Lakesmere Gutter and Roofing Installation	44	18-Jul-16	30-Aug-16																												
PCB-XX-2170	Golden Glass Skylight Installation	27	04-Aug-16	30-Aug-16																												
PCB-XX-2180	MEP Installation	12	19-Aug-16	30-Aug-16																												
PCB-XX-2190	Baffled Ceiling Hangers	12	19-Aug-16	30-Aug-16																												
PCB-XX-2200	Roof Segment Loadout	1	31-Aug-16	31-Aug-16																												
<b>Roof Segment 10 Assembly</b>																																
PCB-XX-2030	Erect Main Structure (Steel)	8	01-Jul-16*	08-Jul-16																												
PCB-XX-2040	Prop-Arm & Prop-Node Installation	5	09-Jul-16	13-Jul-16																												
PCB-XX-2050	Remaining Steel Installation	5	14-Jul-16	18-Jul-16																												
PCB-XX-2060	Install Gutter & Skylight Steel	6	19-Jul-16	24-Jul-16																												
PCB-XX-2070	Lakesmere Gutter and Roofing Installation	44	25-Jul-16	06-Sep-16																												
PCB-XX-2080	Golden Glass Skylight Installation	27	11-Aug-16	06-Sep-16																												
PCB-XX-2090	MEP Installation	12	26-Aug-16	06-Sep-16																												
PCB-XX-2100	Baffled Ceiling Hangers	12	26-Aug-16	06-Sep-16																												
<b>Roof Segment 12 Assembly</b>																																
PCB-XX-1940	Erect Main Structure (Steel)	8	06-Jul-16*	13-Jul-16																												
PCB-XX-1950	Prop-Arm & Prop-Node Installation	5	14-Jul-16	18-Jul-16																												
PCB-XX-1960	Remaining Steel Installation	5	19-Jul-16	23-Jul-16																												
PCB-XX-1970	Install Gutter & Skylight Steel	6	24-Jul-16	29-Jul-16																												
PCB-XX-1980	Lakesmere Gutter and Roofing Installation	44	30-Jul-16	11-Sep-16																												
PCB-XX-1990	Golden Glass Skylight Installation	27	16-Aug-16	11-Sep-16																												
PCB-XX-2000	MEP Installation	12	31-Aug-16	11-Sep-16																												
PCB-XX-2010	Baffled Ceiling Hangers	12	31-Aug-16	11-Sep-16																												
<b>Roof Segment 11 Assembly</b>																																
PCB-XX-1850	Erect Main Structure (Steel)	8	10-Jul-16*	17-Jul-16																												
PCB-XX-1860	Prop-Arm & Prop-Node Installation	5	18-Jul-16	22-Jul-16																												
PCB-XX-1870	Remaining Steel Installation	5	23-Jul-16	27-Jul-16																												
PCB-XX-1880	Install Gutter & Skylight Steel	6	28-Jul-16	02-Aug-16																												
PCB-XX-1890	Lakesmere Gutter and Roofing Installation	44	03-Aug-16	15-Sep-16																												
PCB-XX-1900	Golden Glass Skylight Installation	27	20-Aug-16	15-Sep-16																												
PCB-XX-1910	MEP Installation	12	04-Sep-16	15-Sep-16																												
PCB-XX-1920	Baffled Ceiling Hangers	12	04-Sep-16	15-Sep-16																												
<b>Roof Segment 14 Assembly</b>																																
PCB-XX-2390	Erect Main Structure (Steel)	8	15-Jul-16*	22-Jul-16																												
PCB-XX-2400	Prop-Arm & Prop-Node Installation	5	23-Jul-16	27-Jul-16																												
PCB-XX-2410	Remaining Steel Installation	5	28-Jul-16	01-Aug-16																												
PCB-XX-2420	Install Gutter & Skylight Steel	6	02-Aug-16	07-Aug-16																												
PCB-XX-2430	Lakesmere Gutter and Roofing Installation	44	08-Aug-16	20-Sep-16																												
PCB-XX-2440	Golden Glass Skylight Installation	27	25-Aug-16	20-Sep-16																												
<b>Roof Segment 13 Assembly</b>																																
PCB-XX-2480	Erect Main Structure (Steel)	8	19-Jul-16*	26-Jul-16																												
PCB-XX-2490	Prop-Arm & Prop-Node Installation	5	27-Jul-16	31-Jul-16																												

- Actual Work
- Remaining Work
- Critical Remaining Work
- ◆ Milestone

3 MONTH ROLLING PROGRAMME

Date	Revision	Checked	Approved
	3-Month Rolling Programme		



Activity ID	Activity Name	Original Duration	Start	Finish	25							26							27							28							29						
					02	03	04	05	06	07	08	02	03	04	05	06	07	08	02	03	04	05	06	07	08	02	03	04	05	06	07	08	02	03	04	05	06	07	08
<b>Gridline J</b>																																							
<b>Gridline J - RC Works (5 Mega Columns)</b>																																							
<b>Gridline J - RC Works (5 Mega Columns)</b>																																							
<b>J2 (to +19.0mPD) - Shutter No.3 - Cycle 3</b>																																							
A1990	Scaffolding and Rebar Fixing - J2	7	01-Jun-16 A	14-Jun-16																																			
A2040	PCB - Mega Column Fix Shutters and Cast (+6.2 to +16.5mPD) - J2	2	15-Jun-16	16-Jun-16																																			
A2280	PCB - Scaffolding+Embedded Rebar Fixing+MEP - J2	7	17-Jun-16	24-Jun-16																																			
A2330	PCB - Mega Column Final Pour (+16.5 to +19.45mPD) - J2	1	25-Jun-16	25-Jun-16																																			
A2370	Minimum Curing before Stripping Shutter J2	2	27-Jun-16	28-Jun-16																																			
<b>J1 (to +19.0mPD) - Shutter No.2 - Cycle 3</b>																																							
A2010	PCB - Mega Columns J Kicker (+4.0 to +6.2mPD) - J1	4	02-Jun-16 A	07-Jun-16																																			
A2240	Scaffolding and Rebar Fixing - J1	7	08-Jun-16	16-Jun-16																																			
A2310	PCB - Mega Column Fix Shutters and Cast (+6.2 to +16.5mPD) - J1	2	17-Jun-16	18-Jun-16																																			
A2470	PCB - Scaffolding+Embedded Rebar Fixing+MEP - J1	7	20-Jun-16	27-Jun-16																																			
A2500	PCB - Mega Column Final Pour (+16.5 to +19.45mPD) - J1	1	28-Jun-16	28-Jun-16																																			
A2540	Minimum Curing before Stripping Shutter J1	2	29-Jun-16	30-Jun-16																																			
<b>Gridline A</b>																																							
<b>Gridline A Bored Piling Works</b>																																							
<b>Gridline A Bored Piles (15 Piles)-1</b>																																							
PCB-02-1580	GLA - Bored Pile Testing 15 number	60	01-Mar-16 A	11-Jun-16																																			
PCB-02-29200	GLA - Bored Pile Proof Coring and TPIDC	18	20-Jun-16	11-Jul-16																																			
<b>Southern Drop-Off Area</b>																																							
<b>Southern Drop off Area - Pile Caps</b>																																							
<b>Southern Drop Off Area - East</b>																																							
<b>Column 1st Lift</b>																																							
PCB-16-2070	DoA - EAST - Construct Column Kickers Stage 6 (DC14,29,44)	3	06-Jun-16*	08-Jun-16																																			
PCB-16-2080	DoA - EAST - Construct Column Kickers Stage 7 (DC15,30,45)	3	06-Jun-16*	08-Jun-16																																			
<b>Southern Drop Off Area - West</b>																																							
<b>Pile Caps</b>																																							
PCB-16-1880	DoA - WEST - Construct Pile Caps Stage 10 (to +4.0mPD) (DC3,4,5)	4	25-Apr-16 A	07-Jun-16																																			
<b>Column 1st Lift</b>																																							
PCB-16-1470	DoA - WEST - Construct Kickers Stage 8 (to +7.294mPD) (DC6,7,8)	3	06-Jan-16 A	06-Jun-16																																			
PCB-16-2120	DoA - WEST - Construct Kickers Stage 15 (to +7.294mPD) (DC33,34,35)	3	03-Mar-16 A	06-Jun-16																																			
PCB-16-2110	DoA - WEST - Construct Kickers Stage 14 (to +7.294mPD) (DC18,19,20)	3	19-Feb-16 A	07-Jun-16																																			
PCB-16-1940	DoA - WEST - Construct Kickers Stage 10 (to +7.294mPD) (DC3,4,5)	3	08-Jun-16	11-Jun-16																																			
PCB-16-1950	DoA - WEST - Construct Kickers Stage 11 (to +7.294mPD) (DC2,17,32)	3	13-Jun-16	15-Jun-16																																			
PCB-16-2090	DoA - WEST - Construct Kickers Stage 12 (to +7.294mPD) (DC1,16,31)	3	16-Jun-16	18-Jun-16																																			
<b>Columns, Piers and Bearings</b>																																							
PCB-16-1490	DoA - Construct Columns Stage 8 (to +11mPD) (DC6,7,8)	12	26-Jan-16 A	10-Jun-16																																			
PCB-16-2150	DoA - Construct Columns Stage 14 (to +11mPD) (DC18,19,20)	12	07-Mar-16 A	10-Jun-16																																			
PCB-16-2160	DoA - Construct Columns Stage 15 (to +11mPD) (DC33,34,35)	12	17-Mar-16 A	10-Jun-16																																			
PCB-16-1610	DoA - Construct Columns Stage 10 (to +11mPD) (DC3,4,5)	12	13-Jun-16	25-Jun-16																																			
PCB-16-1615	DoA - Construct Columns Stage 11 (to +11mPD) (DC2,17,32)	12	16-Jun-16	29-Jun-16																																			
PCB-16-1625	DoA - Construct Columns Stage 12 (to +11mPD) (DC1,16,31)	12	20-Jun-16	04-Jul-16																																			
<b>Backfilling</b>																																							
PCB-16-2040	DoA - WEST - Backfilling to Pile Caps Stage 14 (to +4.0mPD) (DC18,19,20)	3	11-Jun-16	14-Jun-16																																			
PCB-16-2050	DoA - WEST - Backfilling to Pile Caps Stage 15 (to +4.0mPD) (DC33,34,35)	3	11-Jun-16	14-Jun-16																																			
PCB-16-1480	DoA - WEST - Backfilling to Pile Caps Stage 10 (to +4.0mPD) (DC36,37,38)	3	27-Jun-16	29-Jun-16																																			
PCB-16-1985	DoA - WEST - Backfilling to Pile Caps Stage 11 (to +4.0mPD) (DC2,17,32)	3	30-Jun-16	04-Jul-16																																			
PCB-16-1990	DoA - WEST - Backfilling to Pile Caps Stage 12 (to +4.0mPD) (DC1,16,31)	3	05-Jul-16	07-Jul-16																																			
<b>Northern Footbridge Links</b>																																							
<b>Northern Footbridge Link Borad Piling</b>																																							
<b>Northern Footbridge Piles in Portion C (16 Piles)</b>																																							
PCB-02-1715	NFB (C) - Bored Pile Testing 16 number	72	23-May-16 A	28-Jul-16																																			
PCB-02-31160	NFB (C) - Bored Pile TPIDC Proof Coring	24	25-Jul-16	17-Aug-16																																			
<b>Rig 1</b>																																							
PCB-02-11290	NFB (C) - Bored Piling NF-A4-1	23	19-May-16 A	16-Jun-16																																			
PCB-02-11280	NFB (C) - Bored Piling NF-A4-2	23	06-Jun-16	28-Jun-16																																			
<b>Rig 4</b>																																							
PCB-02-11360	NFB (C) - Bored Piling NF-A2-1	23	27-May-16 A	22-Jun-16																																			
PCB-02-11330	NFB (C) - Bored Piling NF-A3-2	23	02-Jun-16 A	24-Jun-16																																			
<b>Rig 5</b>																																							
PCB-02-11410	NFB (C) - Bored Piling NF-A1-2	23	01-Jun-16 A	22-Jun-16																																			
<b>Pile Caps &amp; Piers</b>																																							
<b>Pier P1</b>																																							

3 MONTH ROLLING PROGRAMME

- Actual Work
- Remaining Work
- Critical Remaining Work
- ◆ Milestone

Date	Revision	Checked	Approved
	3-Month Rolling Programme		





