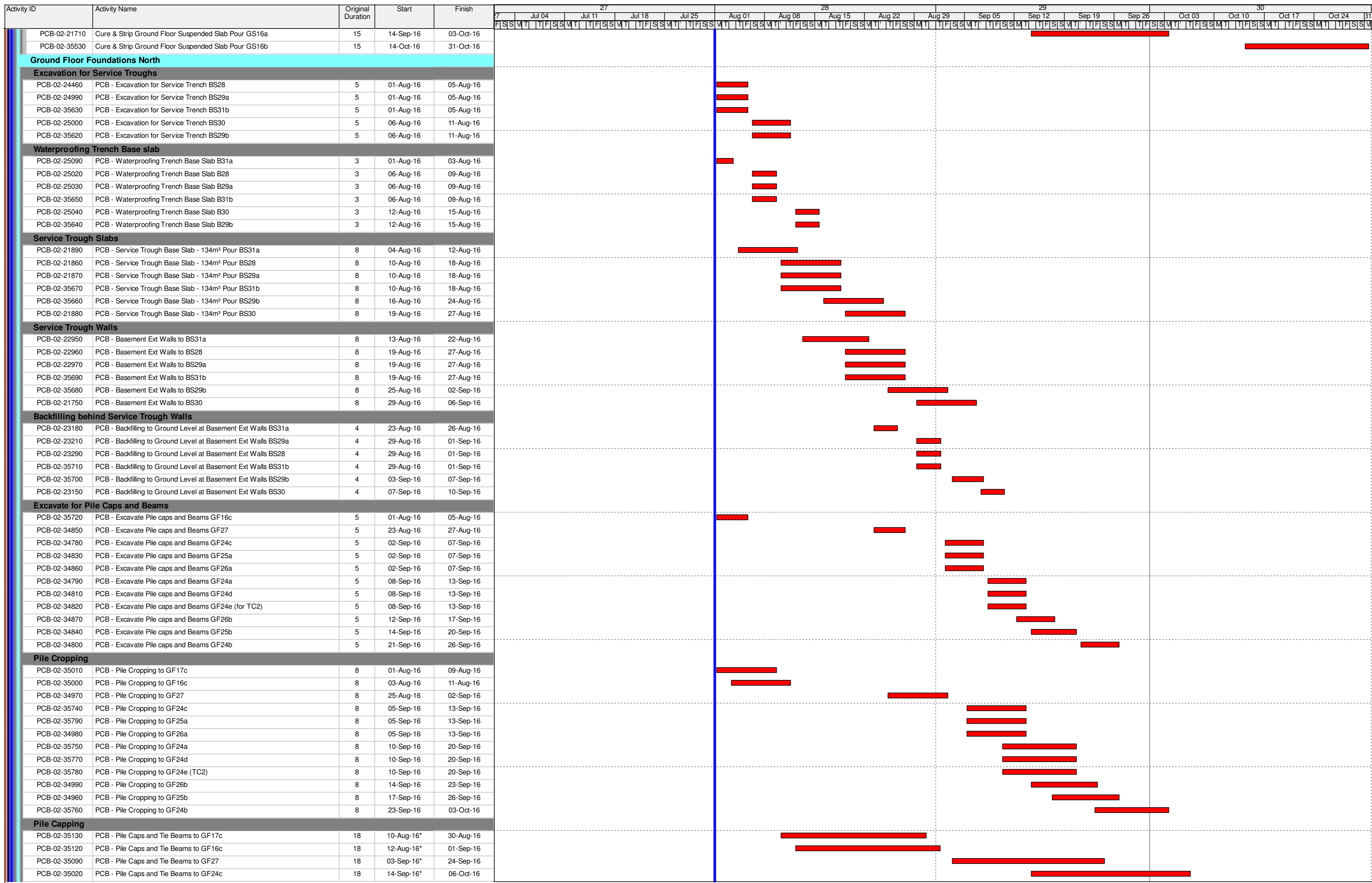


Activity ID	Activity Name	Original Duration	Start	Finish	Gantt Chart Timeline																																																		
					7	8	9	10	11	12	13	14	15	16	17	18	19	20	21	22	23	24	25	26	27	28	29	30	31	1	2	3	4	5	6	7	8	9	10	11	12	13	14	15	16	17	18	19	20	21	22	23	24	25	26
CONSTRUCTION																																																							
Passenger Clearance Building																																																							
Pile Caps and Tie Beam Construction																																																							
Basement Tie Beams & Pile Caps																																																							
Zone C3																																																							
BF14 Stage 2																																																							
PCB-02-23310	PCB - Backfilling to Ground Level at Basement Ext Walls BS14 (Rqd for BS28)	3	22-Jul-16 A	02-Aug-16	[Gantt bar: Jul 22 - Aug 2]																																																		
Zone W3																																																							
BS19																																																							
PCB-02-23300	PCB - Backfilling to Ground Level at Basement Ext Walls BS19	3	22-Jul-16 A	02-Aug-16	[Gantt bar: Jul 22 - Aug 2]																																																		
BF21																																																							
PCB-02-23200	PCB - Backfilling to Ground Level at Basement Ext Walls BS21	3	01-Aug-16	03-Aug-16	[Gantt bar: Aug 1 - Aug 3]																																																		
Zone E3																																																							
BS24																																																							
PCB-02-23170	PCB - Backfilling to Ground Level at Basement Ext Walls BS24 (Rqd for BS31)	3	01-Aug-16	03-Aug-16	[Gantt bar: Aug 1 - Aug 3]																																																		
Tower Cranes																																																							
Tower Crane No.2 - NORTH MIDDLE																																																							
PCB-02-22160	PCB(A1) - Construct Tower Crane Footings TC2	8	01-Aug-16*	09-Aug-16	[Gantt bar: Aug 1 - Aug 9]																																																		
PCB-02-22170	PCB(A1) - Erect Tower Crane TC2	6	10-Aug-16	16-Aug-16	[Gantt bar: Aug 10 - Aug 16]																																																		
Superstructure																																																							
Ground Floor Foundations South																																																							
Pile Capping																																																							
A2510	Pile Caps and Tie Beams to GF18 - North West Corner (Extended Working Hours)	10	17-Jun-16 A	04-Aug-16	[Gantt bar: Jun 17 - Aug 4]																																																		
A2690	Pile Caps and Tie Beams to GF19b (Extended Working Hours) Middle North	10	24-Jun-16 A	04-Aug-16	[Gantt bar: Jun 24 - Aug 4]																																																		
A2520	Pile Caps and Tie Beams to GF20b - South West Corner (Extended Working Hours)	10	01-Aug-16	11-Aug-16	[Gantt bar: Aug 1 - Aug 11]																																																		
A2480	Pile Caps and Tie Beams to GF20a (Extended Working Hours) Middle South	10	01-Aug-16	11-Aug-16	[Gantt bar: Aug 1 - Aug 11]																																																		
Water Proofing																																																							
A2650	Waterproofing Pile Caps and Tie Beams to GF20b - South West Corner	4	12-Aug-16	16-Aug-16	[Gantt bar: Aug 12 - Aug 16]																																																		
A2610	Waterproofing Pile Caps and Tie Beams to GF20a Middle South	4	12-Aug-16	16-Aug-16	[Gantt bar: Aug 12 - Aug 16]																																																		
Backfilling to Top Level of Ground Beams (+5.0mPD Generally)																																																							
A2700	Backfilling to Tie Beams to GF18 - North West Corner	4	01-Aug-16	04-Aug-16	[Gantt bar: Aug 1 - Aug 4]																																																		
A2760	Backfilling to Tie Beams to GF19b Middle North	4	01-Aug-16	04-Aug-16	[Gantt bar: Aug 1 - Aug 4]																																																		
A2710	Backfilling to Tie Beams to GF20b - South West Corner	4	17-Aug-16	20-Aug-16	[Gantt bar: Aug 17 - Aug 20]																																																		
A2670	Backfilling to Tie Beams to GF20a Middle South	4	17-Aug-16	20-Aug-16	[Gantt bar: Aug 17 - Aug 20]																																																		
Ground Slabs (+5.450mPD)																																																							
A2770	Construct Ground Floor Base Slab GS18 - North West Corner	12	05-Aug-16	18-Aug-16*	[Gantt bar: Aug 5 - Aug 18]																																																		
A2820	Construct Ground Floor Base Slab GS19b Middle North	15	05-Aug-16	22-Aug-16	[Gantt bar: Aug 5 - Aug 22]																																																		
A2780	Construct Ground Floor Base Slab GS20b - South West Corner	14	22-Aug-16	06-Sep-16*	[Gantt bar: Aug 22 - Sep 6]																																																		
A2750	Construct Ground Floor Base Slab GS20a Middle South	15	22-Aug-16	07-Sep-16	[Gantt bar: Aug 22 - Sep 7]																																																		
Ground Floor Slabs (+5.450mPD)																																																							
SOUTH - Gridline J-G																																																							
PCB-AB-A0020	Earliest Commencement of ABWF/MEP in Basement SOUTH WEST	0	01-Aug-16		[Milestone: Aug 1]																																																		
MIDDLE - Gridline G-E																																																							
Suspended Slabs (+5.450mPD)																																																							
PCB-02-21360	Construct Ground Floor Suspended Slab Pour GS06 - 186m³	23	27-Jun-16 A	03-Aug-16	[Gantt bar: Jun 27 - Aug 3]																																																		
Cure and Strip Suspended Slabs																																																							
PCB-02-21470	Cure & Strip Ground Floor Suspended Slab Pour GS08a	15	01-Aug-16	17-Aug-16	[Gantt bar: Aug 1 - Aug 17]																																																		
PCB-02-35580	Cure & Strip Ground Floor Suspended Slab Pour GS04b	15	01-Aug-16	17-Aug-16	[Gantt bar: Aug 1 - Aug 17]																																																		
PCB-02-21450	Cure & Strip Ground Floor Suspended Slab Pour GS06	15	04-Aug-16	20-Aug-16	[Gantt bar: Aug 4 - Aug 20]																																																		
NORTH - Gridline E-B																																																							
PCB-AB-A0050	Earliest Commencement of ABWF/MEP in Basement NORTH EAST	0	05-Sep-16		[Milestone: Sep 5]																																																		
Suspended Slabs (+5.450mPD)																																																							
PCB-02-35510	Construct Ground Floor Suspended Slab Pour GS17b	23	18-Jul-16 A	15-Aug-16	[Gantt bar: Jul 18 - Aug 15]																																																		
PCB-02-21680	Construct Ground Floor Suspended Slab Pour GS14 - 146m³	23	22-Jul-16 A	17-Aug-16	[Gantt bar: Jul 22 - Aug 17]																																																		
PCB-02-21670	Construct Ground Floor Suspended Slab Pour GS16a	23	18-Aug-16*	13-Sep-16	[Gantt bar: Aug 18 - Sep 13]																																																		
PCB-02-35500	Construct Ground Floor Suspended Slab Pour GS16b	23	14-Sep-16*	13-Oct-16	[Gantt bar: Sep 14 - Oct 13]																																																		
Cure and Strip Suspended Slabs																																																							
PCB-02-21720	Cure & Strip Ground Floor Suspended Slab Pour GS15	15	27-Jul-16 A	05-Aug-16	[Gantt bar: Jul 27 - Aug 5]																																																		
PCB-02-21730	Cure & Strip Ground Floor Suspended Slab Pour GS17a	15	01-Aug-16	17-Aug-16	[Gantt bar: Aug 1 - Aug 17]																																																		
PCB-02-35520	Cure & Strip Ground Floor Suspended Slab Pour GS17b	15	16-Aug-16	01-Sep-16	[Gantt bar: Aug 16 - Sep 1]																																																		
PCB-02-23470	Cure & Strip Ground Floor Suspended Slab Pour GS14	15	18-Aug-16	03-Sep-16	[Gantt bar: Aug 18 - Sep 3]																																																		

3 MONTH ROLLING PROGRAMME

- Actual Work
- Remaining Work
- Critical Remaining Work
- ◆ Milestone

Date	Revision	Checked	Approved
	3-Month Rolling Programme		



3 MOHTH ROLLING PROGRAMME

Actual Work	Date		Revision	Checked	Approved
Remaining Work			3-Month Rolling Programme		
Critical Remaining Work					
Milestone					

Activity ID	Activity Name	Original Duration	Start	Finish	Calendar																																
					27	28	29	30	31	1	2	3	4	5	6	7	8	9	10	11	12	13	14	15	16	17	18	19	20	21	22	23	24	25	26		
PCB-02-35070	PCB - Pile Caps and Tie Beams to GF25a	18	14-Sep-16*	06-Oct-16																																	
PCB-02-35100	PCB - Pile Caps and Tie Beams to GF26a	18	14-Sep-16*	06-Oct-16																																	
PCB-02-35030	PCB - Pile Caps and Tie Beams to GF24a	18	21-Sep-16*	13-Oct-16																																	
PCB-02-35050	PCB - Pile Caps and Tie Beams to GF24d	18	21-Sep-16*	13-Oct-16																																	
PCB-02-35060	PCB - Pile Caps and Tie Beams to GF24e (TC2)	18	21-Sep-16*	13-Oct-16																																	
PCB-02-35110	PCB - Pile Caps and Tie Beams to GF26b	18	24-Sep-16*	17-Oct-16																																	
PCB-02-35080	PCB - Pile Caps and Tie Beams to GF25b	18	27-Sep-16*	19-Oct-16																																	
PCB-02-35040	PCB - Pile Caps and Tie Beams to GF24b	18	04-Oct-16*	25-Oct-16																																	
Waterproofing																																					
PCB-02-35250	PCB - Waterproofing Pile Caps and Tie Beams to GF17c	3	31-Aug-16	02-Sep-16																																	
PCB-02-35240	PCB - Waterproofing Pile Caps and Tie Beams to GF16c	3	01-Sep-16	05-Sep-16																																	
PCB-02-35210	PCB - Waterproofing Pile Caps and Tie Beams to GF27	3	26-Sep-16	28-Sep-16																																	
PCB-02-35140	PCB - Waterproofing Pile Caps and Tie Beams to GF24c	3	07-Oct-16	11-Oct-16																																	
PCB-02-35190	PCB - Waterproofing Pile Caps and Tie Beams to GF25a	3	07-Oct-16	11-Oct-16																																	
PCB-02-35220	PCB - Waterproofing Pile Caps and Tie Beams to GF26a	3	07-Oct-16	11-Oct-16																																	
PCB-02-35150	PCB - Waterproofing Pile Caps and Tie Beams to GF24a	3	14-Oct-16	17-Oct-16																																	
PCB-02-35170	PCB - Waterproofing Pile Caps and Tie Beams to GF24d	3	14-Oct-16	17-Oct-16																																	
PCB-02-35800	PCB - Waterproofing Pile Caps and Tie Beams to GF24e (TC2)	3	14-Oct-16	17-Oct-16																																	
PCB-02-35230	PCB - Waterproofing Pile Caps and Tie Beams to GF26b	3	18-Oct-16	20-Oct-16																																	
PCB-02-35200	PCB - Waterproofing Pile Caps and Tie Beams to GF25b	3	20-Oct-16	22-Oct-16																																	
PCB-02-35160	PCB - Waterproofing Pile Caps and Tie Beams to GF24b	3	26-Oct-16	28-Oct-16																																	
Backfilling to Top Level of Ground Beams (+5.0mPD Generally)																																					
PCB-02-35370	PCB - Backfilling to Pile Caps and Tie Beams to GF17c	4	03-Sep-16	07-Sep-16																																	
PCB-02-35360	PCB - Backfilling to Pile Caps and Tie Beams to GF16c	4	05-Sep-16	09-Sep-16																																	
PCB-02-35330	PCB - Backfilling to Pile Caps and Tie Beams to GF27	4	29-Sep-16	04-Oct-16																																	
PCB-02-35260	PCB - Backfilling to Pile Caps and Tie Beams to GF24c	4	12-Oct-16	15-Oct-16																																	
PCB-02-35310	PCB - Backfilling to Pile Caps and Tie Beams to GF25a	4	12-Oct-16	15-Oct-16																																	
PCB-02-35340	PCB - Backfilling to Pile Caps and Tie Beams to GF26a	4	12-Oct-16	15-Oct-16																																	
PCB-02-35270	PCB - Backfilling to Pile Caps and Tie Beams to GF24a	4	18-Oct-16	21-Oct-16																																	
PCB-02-35290	PCB - Backfilling to Pile Caps and Tie Beams to GF24d	4	18-Oct-16	21-Oct-16																																	
PCB-02-35810	PCB - Backfilling to Pile Caps and Tie Beams to GF24e (TC2)	4	18-Oct-16	21-Oct-16																																	
PCB-02-35350	PCB - Backfilling to Pile Caps and Tie Beams to GF26b	4	21-Oct-16	25-Oct-16																																	
PCB-02-35320	PCB - Backfilling to Pile Caps and Tie Beams to GF25b	4	24-Oct-16	27-Oct-16																																	
PCB-02-35280	PCB - Backfilling to Pile Caps and Tie Beams to GF24b	4	29-Oct-16	02-Nov-16																																	
Ground Slabs (+5.450mPD)																																					
PCB-02-35490	PCB - Construct Ground Floor Base Slab Pour GS17c	8	08-Sep-16	17-Sep-16																																	
PCB-02-35480	PCB - Construct Ground Floor Base Slab Pour GS16c	8	09-Sep-16	20-Sep-16																																	
PCB-02-35450	PCB - Construct Ground Floor Base Slab Pour GS27	8	05-Oct-16	14-Oct-16																																	
PCB-02-35380	PCB - Construct Ground Floor Base Slab Pour GS24c	8	17-Oct-16	25-Oct-16																																	
PCB-02-35430	PCB - Construct Ground Floor Base Slab Pour GS25a	8	17-Oct-16	25-Oct-16																																	
PCB-02-35460	PCB - Construct Ground Floor Base Slab Pour GS26a	8	17-Oct-16	25-Oct-16																																	
PCB-02-35390	PCB - Construct Ground Floor Base Slab Pour GS24a	8	22-Oct-16	31-Oct-16																																	
PCB-02-35410	PCB - Construct Ground Floor Base Slab Pour GS24d	8	22-Oct-16	31-Oct-16																																	
PCB-02-35820	PCB - Construct Ground Floor Base Slab Pour GS24e (TC2)	8	22-Oct-16	31-Oct-16																																	
PCB-02-35470	PCB - Construct Ground Floor Base Slab Pour GS26b	8	26-Oct-16	03-Nov-16																																	
PCB-02-35440	PCB - Construct Ground Floor Base Slab Pour GS25b	8	28-Oct-16	05-Nov-16																																	
Columns to Mezzanine Slab (+10.250mPD)																																					
MIDDLE - Gridline G-E																																					
PCB-02-20760	Construct Columns to Mezz Floor MS08	8	11-Jul-16 A	04-Aug-16																																	
PCB-02-20790	Construct Columns to Mezz Floor MS07	8	18-Jul-16 A	05-Aug-16																																	
PCB-02-20770	Construct Columns to Mezz Floor MS02	8	04-Aug-16	12-Aug-16																																	
NORTH - Gridline E-B																																					
PCB-02-20750	Construct Columns to Mezz Floor Pour MS06	8	01-Aug-16	09-Aug-16																																	
PCB-02-20740	Construct Columns to Mezz Floor Pour MS03	8	09-Sep-16	19-Sep-16																																	
Mezzanine Floor Slabs (+10.250mPD)																																					
SOUTH - Gridline J-G																																					
PCB-AB-A0080	Earliest Commencement of ABWF/MEP in Cabin 1 Ground Floor SOUTH	0	14-Sep-16																																		
Suspended Slabs																																					
PCB-02-21100	Construct Mezzanine Floor Slab Cabin Pour MS01 - 315m³	23	01-Aug-16	26-Aug-16																																	
Cure and Strip																																					
PCB-02-21120	Cure & Strip Mezzanine Floor Slab Cabin Pour MS01	15	27-Aug-16	13-Sep-16																																	
MIDDLE - Gridline G-E																																					

Activity ID	Activity Name	Original Duration	Start	Finish	27							28							29							30													
					Jul 4	Jul 11	Jul 18	Jul 25	Aug 01	Aug 08	Aug 15	Aug 22	Aug 29	Sep 05	Sep 12	Sep 19	Sep 26	Oct 03	Oct 10	Oct 17	Oct 24	Oct 31																	
PCB-02-20980	Construct Mezzanine Floor Slab Pour MS02 - 322m³	23	13-Aug-16	08-Sep-16																																			
Cure and Strip																																							
PCB-02-21040	Cure & Strip Mezzanine Floor Slab Pour MS08	15	01-Sep-16	19-Sep-16																																			
PCB-02-21030	Cure & Strip Mezzanine Floor Slab Pour MS07	15	02-Sep-16	20-Sep-16																																			
PCB-02-21050	Cure & Strip Mezzanine Floor Slab Pour MS02	15	09-Sep-16	27-Sep-16																																			
NORTH - Gridline E-B																																							
PCB-AB-A0120	Earliest Commencement of ABWF/MEP in Cabin 6 Ground Floor NORTH	0	24-Sep-16																																				
Suspended Slabs																																							
PCB-02-21060	Construct Mezzanine Floor Slab Pour MS06 - 323m³	23	10-Aug-16	05-Sep-16																																			
PCB-02-21070	Construct Mezzanine Floor Slab Pour MS03 - 335m³	23	20-Sep-16	18-Oct-16																																			
Cure and Strip																																							
PCB-02-21090	Cure & Strip Mezzanine Floor Slab Pour MS06	15	06-Sep-16	23-Sep-16																																			
PCB-02-21080	Cure & Strip Mezzanine Floor Slab Pour MS03	15	19-Oct-16	04-Nov-16																																			
Columns to First Floor (+14.700mPD)																																							
SOUTH - Gridline J-G																																							
A2790	Construct Columns to 1st Floor pour FS02 (Abv GS03a,03b,19a, 05b,21)	12	19-Jul-16 A	11-Aug-16																																			
A2800	Construct Columns to 1st Floor pour FS03 (Abv GS19a,13,05b,21)	12	12-Aug-16	25-Aug-16																																			
PCB-02-21170	Construct Columns to 1st Floor Pour FS09 (Abv MS01)	12	27-Aug-16	09-Sep-16																																			
A2880	Construct Columns to 1st Floor pour FS04 (Abv GS11,1319a,19b,,20a,21)	12	08-Sep-16	22-Sep-16																																			
A2900	Construct Columns to 1st Floor pour FS05 (Abv GS11,19b,20a)	12	23-Sep-16	07-Oct-16																																			
A2890	Construct Columns to 1st Floor pour FS06 (Abv GS09,,11,19b,18, 20a,20b)	12	08-Oct-16	22-Oct-16																																			
A2830	Construct Columns to 1st Floor pour FS07 (Abv GS09,18,20b)	12	24-Oct-16	05-Nov-16																																			
MIDDLE - Gridline G-E																																							
PCB-02-33470	Construct Columns to 1st Floor pour FS15 (Abv MS07,MS08)	12	21-Sep-16	05-Oct-16																																			
PCB-02-33460	Construct Columns to 1st Floor pour FS14 (Abv MS07,MS08)	12	21-Sep-16	05-Oct-16																																			
PCB-02-21150	Construct Columns to 1st Floor pour FS12 (Abv GS25a,12b,12a,13,05b)	12	26-Oct-16	08-Nov-16																																			
PCB-02-33490	Construct Columns to 1st Floor pour FS17 (Abv GS08a,14,24c,08b,04b,09)	12	26-Oct-16	08-Nov-16																																			
NORTH - Gridline E-B																																							
PCB-02-21280	Construct Columns to 1st Floor pour FS19 (Abv MS06)	12	06-Sep-16	20-Sep-16																																			
PCB-02-21180	Construct Columns to 1st Floor Pour FS27 - (Abv MS03)	12	19-Oct-16	01-Nov-16																																			
First Floor Level Beams (+14.7mPD)																																							
SOUTH - Gridline J-G																																							
First Floor Beams																																							
A2870	Construct 1st Floor Beams FSB02 - 341m³	12	12-Aug-16	25-Aug-16																																			
A2860	Construct 1st Floor Beams FSB03 - 490m³	12	26-Aug-16	08-Sep-16																																			
A2990	Construct 1st Floor Beams FSB04 - 481m³	12	23-Sep-16	07-Oct-16																																			
A3000	Construct 1st Floor Beams FSB05 - 502m³	12	08-Oct-16	22-Oct-16																																			
A3010	Construct 1st Floor Beams FSB06 - 488m³	12	24-Oct-16	05-Nov-16																																			
First Floor Level Slabs (+14.7mPD)																																							
SOUTH - Gridline J-G																																							
PCB-AB-A0150	Earliest Commencement of ABWF/MEP in Cabin 1 Mezz Floor SOUTH	0	01-Aug-16																																				
PCB-AB-A0140	Earliest Commencement of ABWF/MEP in Cabin 4 Mezz Floor SOUTH	0	18-Aug-16																																				
Suspended Slabs																																							
A2920	Construct 1st Floor Suspended Slab FS02 - 108m³ After Beams	6	26-Aug-16	01-Sep-16																																			
A2910	Construct 1st Floor Suspended Slab FS03 - 156m³ After Beams	6	09-Sep-16	15-Sep-16																																			
PCB-02-20900	Construct 1st Floor Suspended Slab FS09 - 111m³ - Above MS01	23	10-Sep-16	08-Oct-16																																			
A3070	Construct 1st Floor Suspended Slab FS04 - 158m³ After Beams	6	08-Oct-16	15-Oct-16																																			
A3080	Construct 1st Floor Suspended Slab FS05 - 162m³ After Beams	6	24-Oct-16	29-Oct-16																																			
Cure and Strip																																							
PCB-02-20460	Cure & Strip 1st Floor Suspended Slab FS01 - Cabin 4 (East)	15	01-Aug-16	17-Aug-16																																			
PCB-02-20930	Cure & Strip 1st Floor Suspended Slab FS02	15	02-Sep-16	20-Sep-16																																			
PCB-02-20440	Cure & Strip 1st Floor Suspended Slab FS03	15	17-Sep-16	05-Oct-16																																			
PCB-02-20920	Cure & Strip 1st Floor Suspended Slab FS09 - Cabin 1 (West)	15	11-Oct-16	27-Oct-16																																			
PCB-02-20450	Cure & Strip 1st Floor Suspended Slab FS04	15	17-Oct-16	02-Nov-16																																			
PCB-02-33700	Cure & Strip 1st Floor Suspended Slab FS05	15	31-Oct-16	16-Nov-16																																			
MIDDLE - Gridline G-E																																							
PCB-AB-A0170	Earliest Commencement of ABWF/MEP in Cabin 5 Mezz Floor MIDDLE	0	27-Aug-16																																				
Suspended Slabs																																							
PCB-02-20400	Construct 1st Floor Suspended Slab FS10 - 104m³ - Above MS05	23	04-Jul-16 A	09-Aug-16																																			
PCB-02-33580	Construct 1st Floor Suspended Slab FS14 - 155m³ Above MS08	23	06-Oct-16	02-Nov-16																																			
PCB-02-33590	Construct 1st Floor Suspended Slab FS15 - 185m³ Above MS07	23	06-Oct-16	02-Nov-16																																			
Cure and Strip																																							
PCB-02-20370	Cure & Strip 1st Floor Suspended Slab FS10 - Cabin 5	15	10-Aug-16	26-Aug-16																																			
NORTH - Gridline E-B																																							
Suspended Slabs																																							
PCB-02-20340	Construct 1st Floor Suspended Slab FS19 - 108m³ - Above MS06	23	21-Sep-16	19-Oct-16																																			
Cure and Strip																																							

- Actual Work
- Remaining Work
- Critical Remaining Work
- Milestone

3 MONTH ROLLING PROGRAMME

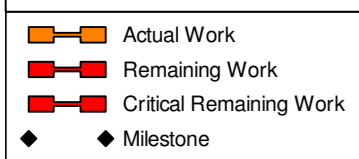
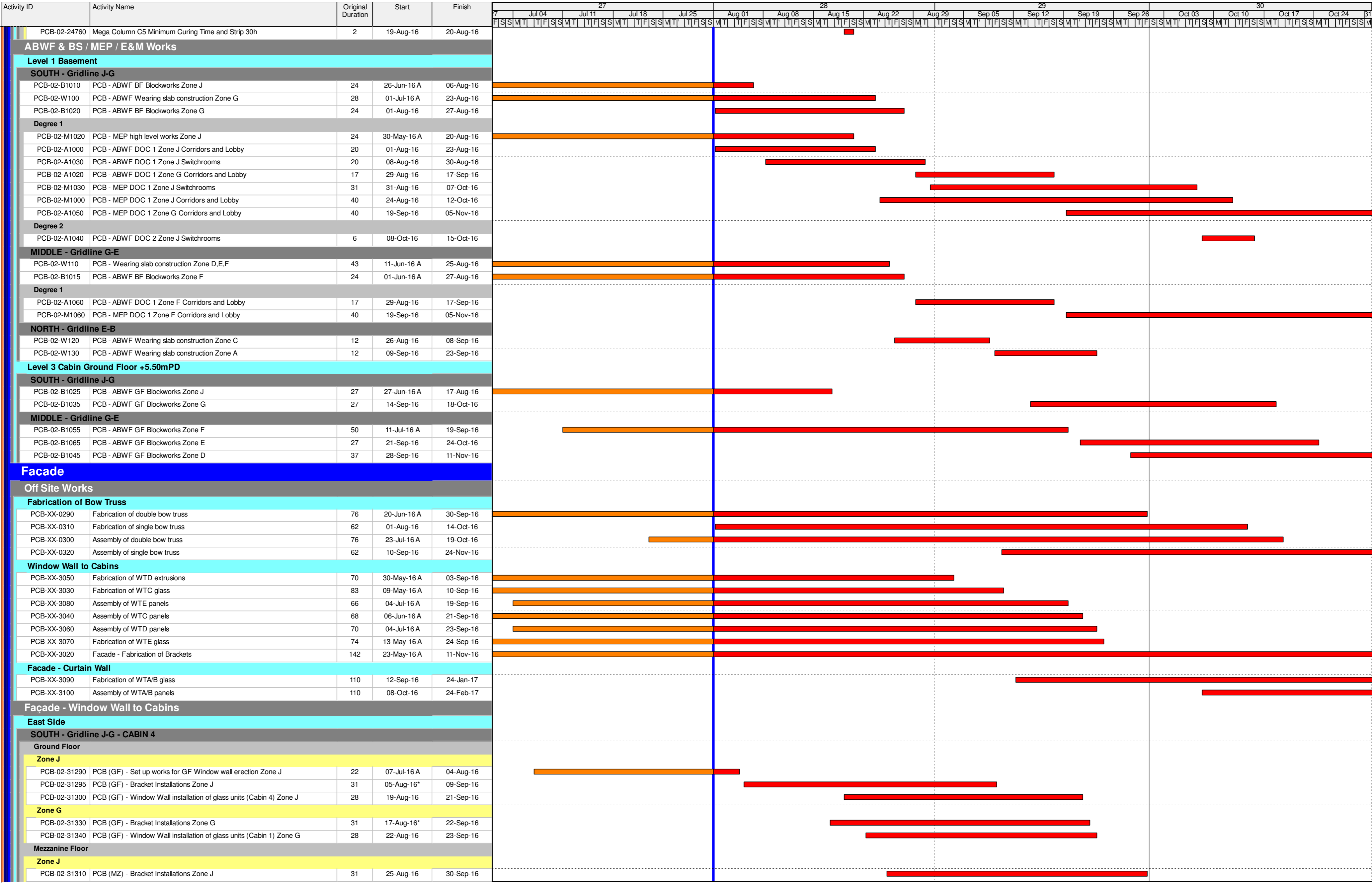
Date	Revision	Checked	Approved
3-Month Rolling Programme			

Activity ID	Activity Name	Original Duration	Start	Finish	27							28							29							30									
					Jul 04	Jul 11	Jul 18	Jul 25	Aug 01	Aug 08	Aug 15	Aug 22	Aug 29	Sep 05	Sep 12	Sep 19	Sep 26	Oct 03	Oct 10	Oct 17	Oct 24	Oct 31													
PCB-02-20360	Cure & Strip 1st Floor Suspended Slab FS19 - Cabin 19	15	20-Oct-16	05-Nov-16	[Gantt bar from Oct 20 to Nov 05]																														
Internal Mega Columns to +19.5mPD (Multi Lift)																																			
South - Gridline G to H																																			
Gridline H																																			
Mega Column H1																																			
PCB-02-23800	Construct Mega Column H1 (+15.45mPD to +19.50mPD)	8	01-Aug-16	09-Aug-16	[Gantt bar from Aug 01 to Aug 09]																														
PCB-02-24660	Mega Column H1 Minimum Curing Time and Strip 30h	2	10-Aug-16	11-Aug-16	[Gantt bar from Aug 10 to Aug 11]																														
Mega Column H3																																			
PCB-02-23820	Construct Mega Column H3 (+15.45mPD to +19.50mPD)	8	31-Oct-16	08-Nov-16	[Gantt bar from Oct 31 to Nov 08]																														
Mega Column H4																																			
PCB-02-23830	Construct Mega Column H4 (+15.45mPD to +19.50mPD)	8	17-Sep-16	26-Sep-16	[Gantt bar from Sep 17 to Sep 26]																														
PCB-02-24630	Mega Column H4 Minimum Curing Time and Strip 30h	2	27-Sep-16	28-Sep-16	[Gantt bar from Sep 27 to Sep 28]																														
Mega Column H5																																			
PCB-02-23850	Construct Mega Column H5 (+15.45mPD to +19.50mPD)	8	01-Aug-16	09-Aug-16	[Gantt bar from Aug 01 to Aug 09]																														
PCB-02-24620	Mega Column H5 Minimum Curing Time and Strip 30h	3	10-Aug-16	12-Aug-16	[Gantt bar from Aug 10 to Aug 12]																														
Gridline G																																			
Mega Column G1																																			
PCB-02-23860	Construct Mega Column G1 (+5.45mPD to +15.45mPD)	8	01-Aug-16	09-Aug-16	[Gantt bar from Aug 01 to Aug 09]																														
PCB-02-23870	Construct Mega Column G1 (+15.45mPD to +19.50mPD)	8	10-Aug-16	18-Aug-16	[Gantt bar from Aug 10 to Aug 18]																														
PCB-02-24610	Mega Column G1 Minimum Curing Time and Strip 30h	2	19-Aug-16	20-Aug-16	[Gantt bar from Aug 19 to Aug 20]																														
Mega Column G3																																			
PCB-02-24190	Construct Mega Column G3 (+15.45mPD to +19.50mPD)	8	31-Oct-16	08-Nov-16	[Gantt bar from Oct 31 to Nov 08]																														
Mega Column G4																																			
PCB-02-24200	Construct Mega Column G4 (+15.45mPD to +19.50mPD)	8	17-Sep-16	26-Sep-16	[Gantt bar from Sep 17 to Sep 26]																														
PCB-02-24580	Mega Column G4 Minimum Curing Time and Strip 30h	3	27-Sep-16	29-Sep-16	[Gantt bar from Sep 27 to Sep 29]																														
Mega Column G5																																			
PCB-02-23890	Construct Mega Column G5 (+15.45mPD to +19.50mPD)	8	01-Aug-16	09-Aug-16	[Gantt bar from Aug 01 to Aug 09]																														
PCB-02-24570	Mega Column G5 Minimum Curing Time and Strip 30h	3	10-Aug-16	12-Aug-16	[Gantt bar from Aug 10 to Aug 12]																														
Middle - Gridline F to E																																			
Gridline F																																			
Mega Column F1																																			
PCB-02-23980	Construct Mega Column F1 (+5.45mPD to +15.45mPD)	8	04-Aug-16	12-Aug-16	[Gantt bar from Aug 04 to Aug 12]																														
PCB-02-23990	Construct Mega Column F1 (+15.45mPD to +19.50mPD)	8	13-Aug-16	22-Aug-16	[Gantt bar from Aug 13 to Aug 22]																														
PCB-02-24560	Mega Column F1 Minimum Curing Time and Strip 30h	2	23-Aug-16	24-Aug-16	[Gantt bar from Aug 23 to Aug 24]																														
Mega Column F3																																			
PCB-02-25160	Construct Mega Column F3 (+5.45mPD to +15.50mPD)	8	01-Aug-16	09-Aug-16	[Gantt bar from Aug 01 to Aug 09]																														
Mega Column F5																																			
PCB-02-23970	Construct Mega Column F5 (+15.45mPD to +19.50mPD)	8	01-Aug-16	09-Aug-16	[Gantt bar from Aug 01 to Aug 09]																														
PCB-02-24520	Mega Column F5 Minimum Curing Time and Strip 30h	2	10-Aug-16	11-Aug-16	[Gantt bar from Aug 10 to Aug 11]																														
Gridline E																																			
Mega Column E1																																			
PCB-02-24030	Construct Mega Column E1 (+5.45mPD to +15.45mPD)	8	04-Aug-16	12-Aug-16	[Gantt bar from Aug 04 to Aug 12]																														
PCB-02-24040	Construct Mega Column E1 (+15.45mPD to +19.50mPD)	8	13-Aug-16	22-Aug-16	[Gantt bar from Aug 13 to Aug 22]																														
PCB-02-24510	Mega Column E1 Minimum Curing Time and Strip 30h	2	23-Aug-16	24-Aug-16	[Gantt bar from Aug 23 to Aug 24]																														
Mega Column E3																																			
PCB-02-25170	Construct Mega Column E3 (+5.45mPD to +15.50mPD)	8	01-Aug-16	09-Aug-16	[Gantt bar from Aug 01 to Aug 09]																														
Mega Column E5																																			
PCB-02-23950	Construct Mega Column E5 (+15.45mPD to +19.50mPD)	8	01-Aug-16	09-Aug-16	[Gantt bar from Aug 01 to Aug 09]																														
PCB-02-24470	Mega Column E5 Minimum Curing Time and Strip 30h	2	10-Aug-16	11-Aug-16	[Gantt bar from Aug 10 to Aug 11]																														
North Gridline D to C																																			
Gridline D																																			
Mega Column D1																																			
PCB-02-24080	Construct Mega Column D1 (+5.45mPD to +15.45mPD)	8	14-Sep-16	23-Sep-16	[Gantt bar from Sep 14 to Sep 23]																														
PCB-02-24090	Construct Mega Column D1 (+15.45mPD to +19.50mPD)	8	24-Sep-16	04-Oct-16	[Gantt bar from Sep 24 to Oct 04]																														
PCB-02-24670	Mega Column D1 Minimum Curing Time and Strip 30h	2	05-Oct-16	06-Oct-16	[Gantt bar from Oct 05 to Oct 06]																														
Mega Column D5																																			
PCB-02-23920	Construct Mega Column D5 (+5.45mPD to +15.45mPD)	8	01-Aug-16	09-Aug-16	[Gantt bar from Aug 01 to Aug 09]																														
PCB-02-23930	Construct Mega Column D5 (+15.45mPD to +19.50mPD)	8	10-Aug-16	18-Aug-16	[Gantt bar from Aug 10 to Aug 18]																														
PCB-02-24710	Mega Column D5 Minimum Curing Time and Strip 30h	2	19-Aug-16	20-Aug-16	[Gantt bar from Aug 19 to Aug 20]																														
Gridline C																																			
Mega Column C1																																			
PCB-02-24100	Construct Mega Column C1 (+5.45mPD to +15.45mPD)	8	14-Sep-16	23-Sep-16	[Gantt bar from Sep 14 to Sep 23]																														
PCB-02-24110	Construct Mega Column C1 (+15.45mPD to +19.50mPD)	8	24-Sep-16	04-Oct-16	[Gantt bar from Sep 24 to Oct 04]																														
PCB-02-24720	Mega Column C1 Minimum Curing Time and Strip 30h	2	05-Oct-16	06-Oct-16	[Gantt bar from Oct 05 to Oct 06]																														
Mega Column C5																																			
PCB-02-23900	Construct Mega Column C5 (+5.45mPD to +15.45mPD)	8	01-Aug-16	09-Aug-16	[Gantt bar from Aug 01 to Aug 09]																														
PCB-02-23910	Construct Mega Column C5 (+15.45mPD to +19.50mPD)	8	10-Aug-16	18-Aug-16	[Gantt bar from Aug 10 to Aug 18]																														

- █ Actual Work
- █ Remaining Work
- █ Critical Remaining Work
- ◆ Milestone

3 MONTH ROLLING RPOGRAMME

Date	Revision	Checked	Approved
	3-Month Rolling Programme		



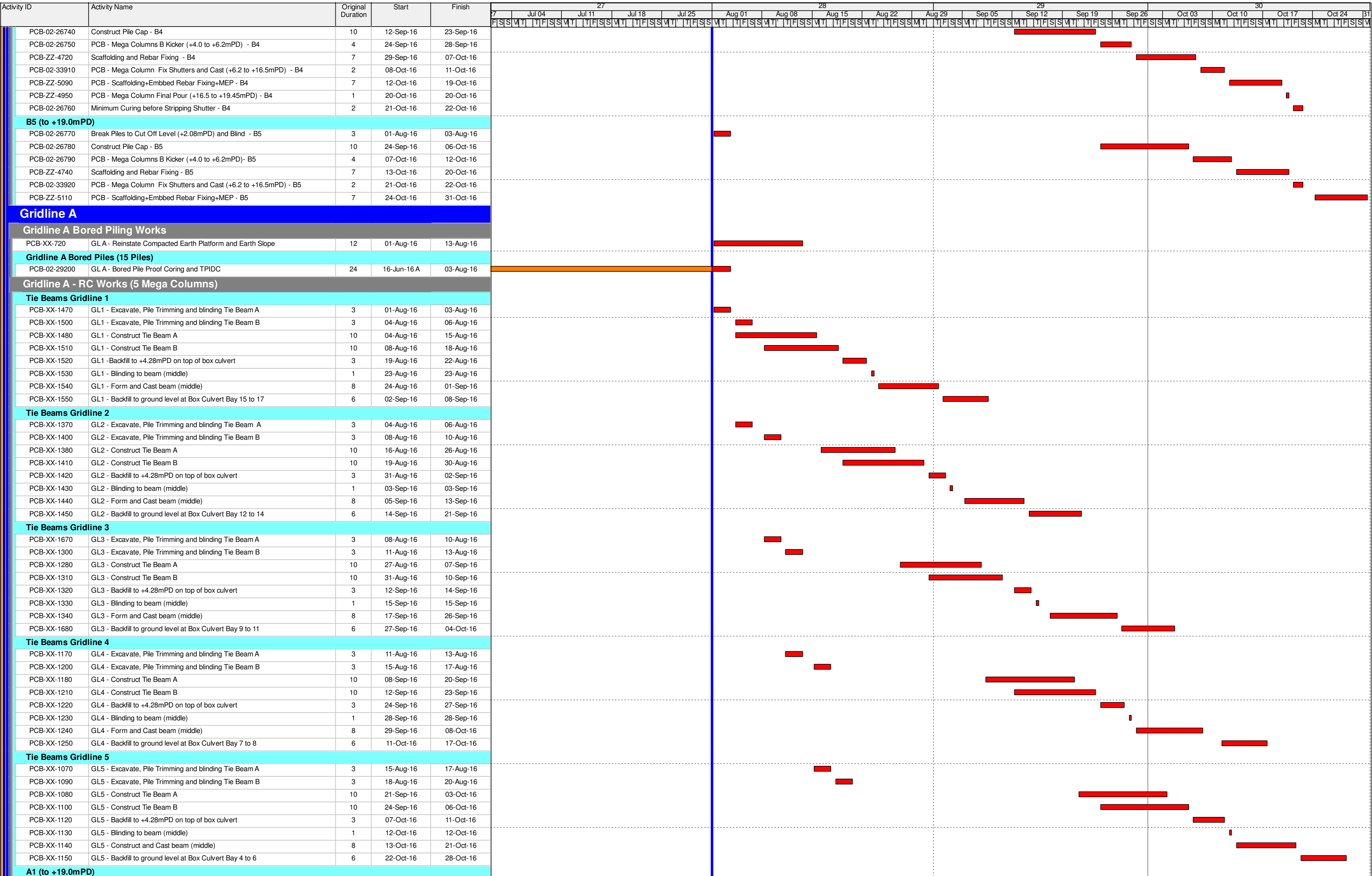
Date	Revision	Checked	Approved
	3-Month Rolling Programme		

Activity ID	Activity Name	Original Duration	Start	Finish	27							28							29							30						
					Jul 04	Jul 11	Jul 18	Jul 25	Aug 01	Aug 08	Aug 15	Aug 22	Aug 29	Sep 05	Sep 12	Sep 19	Sep 26	Oct 03	Oct 10	Oct 17	Oct 24	Oct 31										
A3590	Temporary Footings - ROW 4 - Lowering Zone (Tentative) - Stage 2	15	01-Aug-16*	17-Aug-16	[Gantt bar]																											
Towers																																
A3620	SR - Structural Readiness for ROW 4 Rail	0	15-Oct-16*		[Milestone]																											
A3610	SR - Erect Temporary Launch Towers Gridline C-D (ROW 4)	30	15-Oct-16	18-Nov-16	[Gantt bar]																											
Row 5																																
Footings																																
A3650	Temporary Footings - ROW 5 - Lifting Zone (Tentative) - Stage 3	15	01-Aug-16*	17-Aug-16	[Gantt bar]																											
A3630	Temporary Footings - ROW 5 - Gridline 0.1 (Tentative) - Stage 1	15	01-Aug-16*	17-Aug-16	[Gantt bar]																											
A3640	Temporary Footings - ROW 5 - Lowering Zone (Tentative) - Stage 2	15	01-Aug-16*	17-Aug-16	[Gantt bar]																											
A3680	Temporary Footings - ROW 5 - Gridline 1 to 5 (Tentative) - Stage 4	15	01-Aug-16*	17-Aug-16	[Gantt bar]																											
Towers																																
A3670	SR - Structural Readiness for ROW 5 Rail	0	15-Oct-16*		[Milestone]																											
A3660	SR - Erect Temporary Launch Towers Gridline A-B (ROW 4)	30	15-Oct-16	18-Nov-16	[Gantt bar]																											
Erection																																
Row 1 (GL J-K)																																
Segment Erection																																
PCB-02-11810	SR - Row 1 - Launch Cassette R1/P1	3	04-Aug-16*	06-Aug-16	[Gantt bar]																											
PCB-02-11820	SR - Row 1 - Launch Cassette R1/P2	3	08-Aug-16	10-Aug-16	[Gantt bar]																											
PCB-02-11830	SR - Row 1 - Launch Cassette R1/P3	3	11-Aug-16	13-Aug-16	[Gantt bar]																											
PCB-02-11840	SR - Row 1 - Launch Cassette R1/P4	3	15-Aug-16	17-Aug-16	[Gantt bar]																											
PCB-02-11850	SR - Row 1 - Launch Cassette R1/P5	3	18-Aug-16	20-Aug-16	[Gantt bar]																											
PCB-02-11860	SR - Row 1 - Launch Cassette R1/P6	3	22-Aug-16	24-Aug-16	[Gantt bar]																											
PCB-02-11890	SR - Row 1 - Launch Cassette R1/P7	3	25-Aug-16	27-Aug-16	[Gantt bar]																											
PCB-02-11870	SR - Row 1 - Launch Cassette R1/P8	3	29-Aug-16	31-Aug-16	[Gantt bar]																											
PCB-02-11880	SR - Row 1 - Launch Cassette R1/P9	3	01-Sep-16	03-Sep-16	[Gantt bar]																											
PCB-02-34730	SR - Row 1 - Remove Temp Launching Rail	15	05-Sep-16	22-Sep-16	[Gantt bar]																											
Trolley Return																																
PCB-02-36010	SR - Lower and Return Trolley 1 to Zhong Shan	3	22-Aug-16	24-Aug-16	[Gantt bar]																											
PCB-02-36020	SR - Lower and Return Trolley 2 to Zhong Shan	3	25-Aug-16	27-Aug-16	[Gantt bar]																											
PCB-02-36030	SR - Lower and Return Trolley 3 to Zhong Shan	3	29-Aug-16	31-Aug-16	[Gantt bar]																											
PCB-02-36040	SR - Lower and Return Trolley 4 to Zhong Shan	3	01-Sep-16	03-Sep-16	[Gantt bar]																											
PCB-02-36050	SR - Lower and Return Trolley 5 to Zhong Shan	3	05-Sep-16	07-Sep-16	[Gantt bar]																											
PCB-02-36060	SR - Lower and Return Trolley 6 to Zhong Shan	3	08-Sep-16	10-Sep-16	[Gantt bar]																											
PCB-02-36090	SR - Lower and Return Trolley 7 to Zhong Shan	3	12-Sep-16	14-Sep-16	[Gantt bar]																											
PCB-02-36070	SR - Lower and Return Trolley 8 to Zhong Shan	3	15-Sep-16	19-Sep-16	[Gantt bar]																											
PCB-02-36080	SR - Lower and Return Trolley 9 to Zhong Shan	3	20-Sep-16	22-Sep-16	[Gantt bar]																											
Gridline B																																
Gridline B - RC Works (5 Mega Columns)																																
B1 (to +19.0mPD)																																
PCB-02-2130	Break Piles to Cut Off Level (+2.08mPD) and Blind - B1	3	01-Aug-16	03-Aug-16	[Gantt bar]																											
PCB-02-2135	Construct Pile Cap - B1	10	08-Aug-16	18-Aug-16	[Gantt bar]																											
PCB-02-2140	PCB - Mega Columns B Kicker (+4.0 to +6.2mPD) - B1	4	19-Aug-16	23-Aug-16	[Gantt bar]																											
PCB-ZZ-4140	Scaffolding and Rebar Fixing - B1	7	24-Aug-16	31-Aug-16	[Gantt bar]																											
PCB-02-33880	PCB - Mega Column Fix Shutters and Cast (+6.2 to +16.5mPD) - B1	2	01-Sep-16	02-Sep-16	[Gantt bar]																											
PCB-ZZ-5030	PCB - Scaffolding+Embbd Rebar Fixing+MEP - B1	7	03-Sep-16	10-Sep-16	[Gantt bar]																											
PCB-ZZ-4920	PCB - Mega Column Final Pour (+16.5 to +19.45mPD) - B1	1	12-Sep-16	12-Sep-16	[Gantt bar]																											
PCB-02-2145	Minimum Curing before Stripping Shutter - B1	2	13-Sep-16	14-Sep-16	[Gantt bar]																											
B2 (to +19.0mPD)																																
PCB-02-26650	Break Piles to Cut Off Level (+2.08mPD) and Blind - B2	3	08-Aug-16	10-Aug-16	[Gantt bar]																											
PCB-02-26660	Construct Pile Cap - B2	10	19-Aug-16	30-Aug-16	[Gantt bar]																											
PCB-02-26670	PCB - Mega Columns B Kicker (+4.0 to +6.2mPD) - B2	4	31-Aug-16	03-Sep-16	[Gantt bar]																											
PCB-ZZ-4680	Scaffolding and Rebar Fixing - B2	7	05-Sep-16	12-Sep-16	[Gantt bar]																											
PCB-02-33890	PCB - Mega Column Fix Shutters and Cast (+6.2 to +16.5mPD) - B2	2	13-Sep-16	14-Sep-16	[Gantt bar]																											
PCB-ZZ-5050	PCB - Scaffolding+Embbd Rebar Fixing+MEP - B2	7	15-Sep-16	23-Sep-16	[Gantt bar]																											
PCB-ZZ-4930	PCB - Mega Column Final Pour (+16.5 to +19.45mPD) - B2	1	24-Sep-16	24-Sep-16	[Gantt bar]																											
PCB-02-26680	Minimum Curing before Stripping Shutter - B2	2	26-Sep-16	27-Sep-16	[Gantt bar]																											
B3 (to +19.0mPD)																																
PCB-02-26690	Break Piles to Cut Off Level (+2.08mPD) and Blind - B3	3	04-Aug-16	06-Aug-16	[Gantt bar]																											
PCB-02-26700	Construct Pile Cap - B3	10	31-Aug-16	10-Sep-16	[Gantt bar]																											
PCB-02-26710	PCB - Mega Columns B Kicker (+4.0 to +6.2mPD) - B3	4	12-Sep-16	15-Sep-16	[Gantt bar]																											
PCB-ZZ-4700	Scaffolding and Rebar Fixing - B3	7	17-Sep-16	24-Sep-16	[Gantt bar]																											
PCB-02-33900	PCB - Mega Column Fix Shutters and Cast (+6.2 to +16.5mPD) - B3	2	26-Sep-16	27-Sep-16	[Gantt bar]																											
PCB-ZZ-5070	PCB - Scaffolding+Embbd Rebar Fixing+MEP - B3	7	28-Sep-16	06-Oct-16	[Gantt bar]																											
PCB-ZZ-4940	PCB - Mega Column Final Pour (+16.5 to +19.45mPD) - B3	1	07-Oct-16	07-Oct-16	[Gantt bar]																											
PCB-02-26720	Minimum Curing before Stripping Shutter - B3	2	08-Oct-16	11-Oct-16	[Gantt bar]																											
B4 (to +19.0mPD)																																
PCB-02-26730	Break Piles to Cut Off Level (+2.08mPD) and Blind - B4	3	01-Aug-16	03-Aug-16	[Gantt bar]																											

- Actual Work
- Remaining Work
- Critical Remaining Work
- Milestone

3 MONTH ROLLING PROGRAMME

Date	Revision	Checked	Approved
	3-Month Rolling Programme		



- Actual Work
- Remaining Work
- Critical Remaining Work
- Milestone

3 MONTH ROLLING PROGRAMME

Date	Revision	Checked	Approved
	3-Month Rolling Programme		

Activity ID	Activity Name	Original Duration	Start	Finish				27			28			29			30							
					F	T	F	S	S	M	T	F	S	S	M	T	F	S	S	M	T			
					27	Jul 04	Jul 11	Jul 18	Jul 25	Aug 01	Aug 08	Aug 15	Aug 22	Aug 29	Sep 05	Sep 12	Sep 19	Sep 26	Oct 03	Oct 10	Oct 17	Oct 24	31	
PCB-09-1220-3	BCA (A2E) Construct Bay 20 Wall and Roof Slab	18	07-Oct-16	28-Oct-16																				
Bay 21																								
PCB-09-1230-1	BCA (A2E) Excavate and Construct PC22	12	24-Aug-16	06-Sep-16																				
PCB-09-1230-2	BCA (A2E) Construct Bay 21 Base Slab	18	07-Sep-16	28-Sep-16																				
PCB-09-1230-3	BCA (A2E) Construct Bay 21 Wall and Roof Slab	18	29-Sep-16	21-Oct-16																				
Bay 22																								
PCB-09-1240-1	BCA (A2E) Excavate and Construct PC23	12	07-Sep-16	21-Sep-16																				
PCB-09-1240-2	BCA (A2E) Construct Bay 22 Base Slab	18	22-Sep-16	14-Oct-16																				
PCB-09-1240-3	BCA (A2E) Construct Bay 22 Wall and Roof Slab	18	15-Oct-16	04-Nov-16																				
Bay 23																								
PCB-09-1260-1	BCA (A2E) Excavate and Construct PC24	12	31-Aug-16	13-Sep-16																				
PCB-09-1260-2	BCA (A2E) Construct Bay 23 Base Slab	18	14-Sep-16	06-Oct-16																				
PCB-09-1260-3	BCA (A2E) Construct Bay 23 Wall and Roof Slab	18	07-Oct-16	28-Oct-16																				
Bay 24																								
PCB-09-1270-1	BCA (A2E) Excavate and Construct PC25	12	14-Sep-16	28-Sep-16																				
PCB-09-1270-2	BCA (A2E) Construct Bay 24 Base Slab	18	29-Sep-16	21-Oct-16																				
PCB-09-1270-3	BCA (A2E) Construct Bay 24 Wall and Roof Slab	18	22-Oct-16	11-Nov-16																				

Portion B

Activity ID	Activity Name	Original Duration	Start	Finish
Portion B				
PCB-09-1940	BCA (B) Install S1 Level ELS	9	15-Jul-16 A	06-Aug-16
PCB-09-2130	BCA (B) Excavation (45m) (Bays 25 to 27)	12	01-Aug-16	13-Aug-16
Bay 25				
PCB-09-1280-1	BCA (B)and Construct PC26	12	29-Sep-16	14-Oct-16
PCB-09-1280-2	BCA (B) Construct Bay 25 Base Slab	18	15-Oct-16	04-Nov-16
Bay 26				
PCB-09-1330-1	BCA (B) Excavate and Construct PC27	12	15-Oct-16	28-Oct-16
PCB-09-1330-2	BCA (B) Construct Bay 26 Base Slab	18	29-Oct-16	18-Nov-16
Bay 27				
PCB-09-1340-1	BCA (B) Excavate and Construct PC28	12	07-Oct-16	21-Oct-16
PCB-09-1340-2	BCA (B) Construct Bay 27 Base Slab	18	22-Oct-16	11-Nov-16

Seawater Pump House

RC Structures				
Foundations				
PCB-13A-750	SWP - Jetgrouting	77	11-Jul-16 A	07-Oct-16
PCB-13A-140	SWP - Construct Pile caps & Tie beams	12	08-Oct-16	22-Oct-16
Basement				
PCB-13A-150	SWP - Construct Basement Base Slab at -2.8mPD (Including Waterproofing)	12	24-Oct-16	05-Nov-16

Northern Footbridge Links





Pile Caps & Piers				
Footbridge 1				
Pier P1 - GL.A				
PCB-03-980	NFB1(P1) - VSL Install Roof Erection Temp Footings above P1	8	01-Aug-16	09-Aug-16
PCB-03-990	NFB1(P1) - VSL Install Roof Erection Temp Support Towers P1	6	10-Aug-16	16-Aug-16
Pier P2 - GL.B				
PCB-03-1020	NFB1(P2) - VSL Install Roof Erection Temp Footings above P2	8	10-Aug-16	18-Aug-16
PCB-03-1030	NFB1(P2) - VSL Install Roof Erection Temp Support Towers at P2	6	19-Aug-16	25-Aug-16
Abutment				
PCB-03-1280	NFB1(A) - Open Cut and Blind Excavation for Abutment	3	01-Aug-16	03-Aug-16
PCB-03-1290	NFB1(A) - Construct Abutment	10	04-Aug-16	15-Aug-16
Footbridge 2				
Pier P1 - GL.A				
PCB-03-1060	NFB2(P1) - VSL Install Roof Erection Temp Footings above P1	8	01-Aug-16	09-Aug-16
PCB-03-1070	NFB2(P1) - VSL Install Roof Erection Temp Support Towers P1	6	18-Aug-16	24-Aug-16
Pier P2 - GL.B				
PCB-03-1180	NFB2(P2) - VSL Install Roof Erection Temp Footings above P2	8	10-Aug-16	18-Aug-16
PCB-03-1190	NFB2(P2) - VSL Install Roof Erection Temp Support Towers at P2	6	19-Aug-16	25-Aug-16
Abutment				
PCB-03-1300	NFB2(A) - Open Cut and Blind Excavation for Abutment	3	04-Aug-16	06-Aug-16
PCB-03-1310	NFB2(A) - Construct Abutment	10	08-Aug-16	18-Aug-16
Footbridge 3				
Pier P1 - GL.A				
PCB-03-1100	NFB3(P1) - VSL Install Roof Erection Temp Footings above P1	8	01-Aug-16	09-Aug-16
PCB-03-1110	NFB3(P1) - VSL Install Roof Erection Temp Support Towers P1	6	18-Aug-16	24-Aug-16
Pier P2 - GL.B				
PCB-03-1220	NFB3(P2) - VSL Install Roof Erection Temp Footings above P2	8	10-Aug-16	18-Aug-16
PCB-03-1230	NFB3(P2) - VSL Install Roof Erection Temp Support Towers at P2	6	19-Aug-16	25-Aug-16

— Actual Work
— Remaining Work
— Critical Remaining Work
◆ Milestone

3 MONTH ROLLING PROGRAMME

Date	Revision	Checked	Approved
	3-Month Rolling Programme		

Activity ID	Activity Name	Original Duration	Start	Finish	27							28							29							30															
					Jul 04	Jul 11	Jul 18	Jul 25	Aug 01	Aug 08	Aug 15	Aug 22	Aug 29	Sep 05	Sep 12	Sep 19	Sep 26	Oct 03	Oct 10	Oct 17	Oct 24	Oct 31																			
Abutment																																									
PCB-03-1320	NFB3(A) - Open Cut and Blind Excavation for Abutment	3	08-Aug-16	10-Aug-16																																					
PCB-03-1330	NFB3(A) - Construct Abutment	10	11-Aug-16	22-Aug-16																																					
Footbridge 4																																									
Pier P1 - GL.A																																									
PCB-03-1140	NFB4(P1) - VSL Install Roof Erection Temp Footings above P1	8	01-Aug-16	09-Aug-16																																					
PCB-03-1150	NFB4(P1) - VSL Install Roof Erection Temp Support Towers P1	6	18-Aug-16	24-Aug-16																																					
Pier P2 - GL.B																																									
PCB-03-1260	NFB4(P2) - VSL Install Roof Erection Temp Footings above P2	8	10-Aug-16	18-Aug-16																																					
PCB-03-1270	NFB4(P2) - VSL Install Roof Erection Temp Support Towers at P2	6	19-Aug-16	25-Aug-16																																					
Abutment																																									
PCB-03-1340	NFB4(A) - Open Cut and Blind Excavation for Abutment	3	11-Aug-16	13-Aug-16																																					
PCB-03-1350	NFB4(A) - Construct Abutment	10	15-Aug-16	25-Aug-16																																					
Seawater Cooling Mains and Chilled Water Supply																																									
Seawater Intake & Discharge																																									
RC Structures																																									
Seawater Outfall Culvert																																									
Stage 1																																									
PCB-14-2080	C2 - Contract Hy/2013/02 complete Bore Piling at Abutment (assumed)	49	03-May-16 A	15-Aug-16																																					
PCB-14-2030	SOC - Install Sheetpiles to Cofferdam	9	16-Aug-16	25-Aug-16																																					
PCB-14-2040	SOC - Excavation and ELS	16	26-Aug-16	13-Sep-16																																					
PCB-14-240	SOC - Construct Seawater Outfall Structure	40	14-Sep-16	02-Nov-16																																					
PCB-14-2090	C2 - Contract Hy/2013/02 Construct Abutment Pilecap and Wall (assumed)	74	16-Aug-16	12-Nov-16																																					

-  Actual Work
-  Remaining Work
-  Critical Remaining Work
-  Milestone

3 MONTH ROLLING PROGRAMME

Date	Revision	Checked	Approved
	3-Month Rolling Programme		