

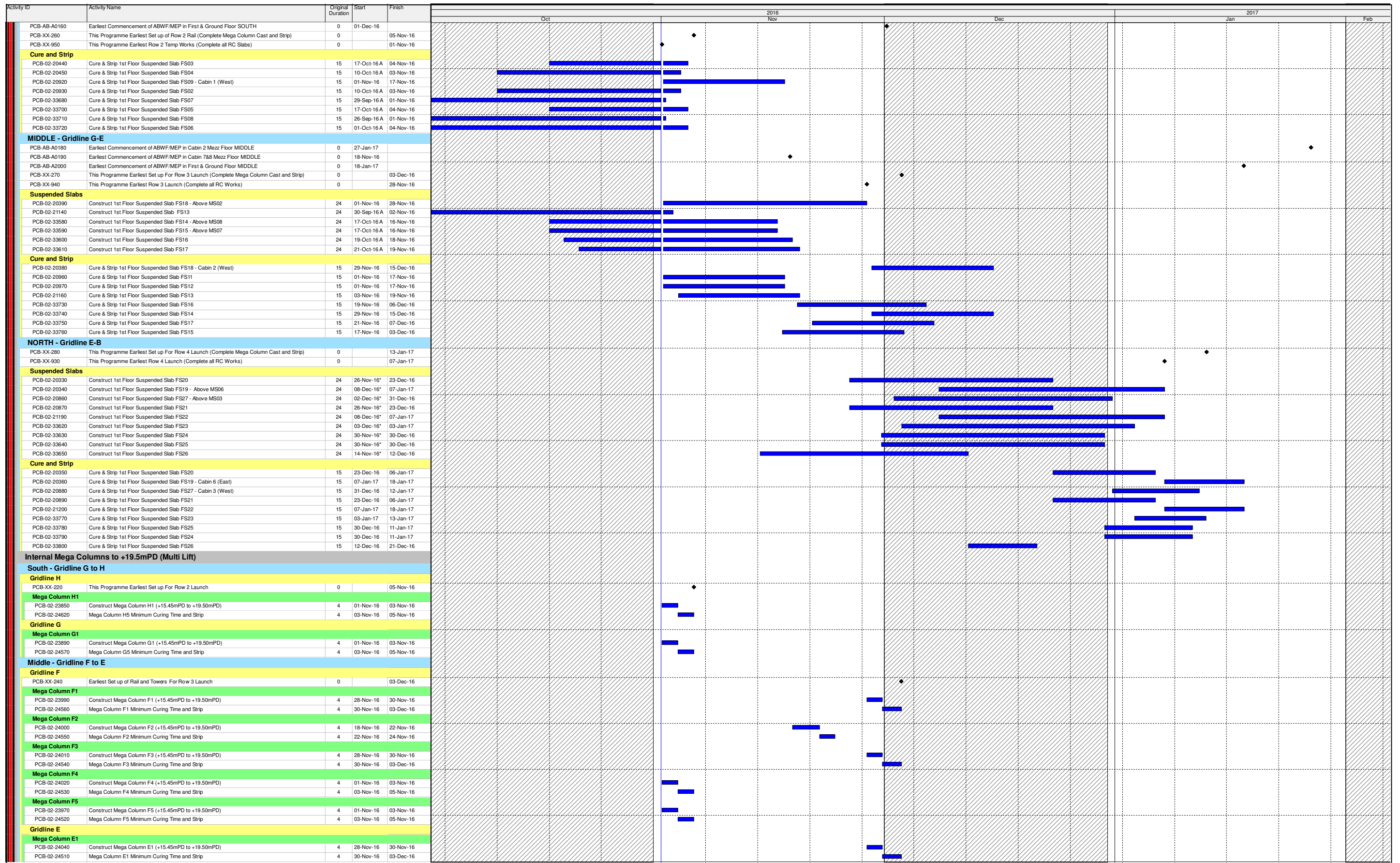
Activity ID	Activity Name	Original Duration	Start	Finish	Oct	2016 Nov	Dec	2017 Jan	Feb
<b>HY/2013/01 HKZMB HKBCF - PCB - 3MRP - October 2016 (Nov 16 Onwards)</b>									
<b>CONSTRUCTION</b>									
<b>Passenger Clearance Building</b>									
<b>Tower Cranes</b>									
<b>Tower Crane No.4 - SOUTH WEST</b>									
PCB-02-22100	PCB(A1) - Dismantle Tower Crane TC4	2	01-Dec-16	02-Dec-16					
PCB-02-22110	PCB(A1) - Tower Crane in Use TC4	225	25-Nov-15A	02-Dec-16					
<b>Tower Crane No.6 - SOUTH EAST</b>									
PCB-02-22020	PCB(A1) - Dismantle Tower Crane TC6	2	03-Nov-16	04-Nov-16					
PCB-02-22030	PCB(A1) - Tower Crane in Use TC6	214	15-Sep-15A	04-Nov-16					
<b>Tower Crane No.5 - SOUTH MIDDLE</b>									
PCB-02-22060	PCB(A1) - Dismantle Tower Crane TC5	2	01-Dec-16	02-Dec-16					
PCB-02-22070	PCB(A1) - Tower Crane in Use TC5	183	03-Dec-15A	02-Dec-16					
<b>Tower Crane No.2 - NORTH MIDDLE</b>									
PCB-02-22180	PCB(A1) - Dismantle Tower Crane TC2	2	06-Jan-17	07-Jan-17					
PCB-02-22190	PCB(A1) - Tower Crane in Use TC2	69	14-Oct-16A	07-Jan-17					
<b>Tower Crane No.1 - NORTH WEST</b>									
PCB-02-22220	PCB(A1) - Dismantle Tower Crane TC1	2	05-Jan-17	06-Jan-17					
PCB-02-22230	PCB(A1) - Tower Crane in Use TC1	208	14-Mar-16A	06-Jan-17					
<b>Tower Crane No.3 - NORTH EAST</b>									
PCB-02-22140	PCB(A1) - Dismantle Tower Crane TC3	2	11-Jan-17	12-Jan-17					
PCB-02-22150	PCB(A1) - Tower Crane in Use TC3	198	22-Jan-16A	12-Jan-17					
<b>Superstructure</b>									
<b>Ground Floor Foundations North</b>									
<b>Service Trough Slabs</b>									
PCB-02-21880	PCB - Service Trough Base Slab - 134m <sup>2</sup> Pour BS30a	25	15-Sep-16A	02-Nov-16					
PCB-02-35660	PCB - Service Trough Base Slab - 134m <sup>2</sup> Pour BS29b	23	05-Oct-16A	09-Nov-16					
PCB-02-35670	PCB - Service Trough Base Slab - 134m <sup>2</sup> Pour BS31b	23	08-Oct-16A	11-Nov-16					
PCB-02-51920	PCB - Service Trough Base Slab - 134m <sup>2</sup> Pour BS30b	24	17-Sep-16A	04-Nov-16					
PCB-02-52150	PCB - Service Trough Base Slab - 134m <sup>2</sup> Pour BS29c	23	07-Oct-16A	10-Nov-16					
<b>Service Trough Walls</b>									
PCB-02-21750	PCB - Basement Ext Walls to BS30a	8	27-Oct-16A	07-Nov-16					
PCB-02-35680	PCB - Basement Ext Walls to BS29b	8	10-Nov-16	18-Nov-16					
PCB-02-35690	PCB - Basement Ext Walls to BS31b	8	12-Nov-16	21-Nov-16					
PCB-02-51910	PCB - Basement Ext Walls to BS30b	8	17-Oct-16A	02-Nov-16					
PCB-02-52170	PCB - Basement Ext Walls to BS29c	8	11-Nov-16	19-Nov-16					
<b>Ground Slabs (+5.450mPD)</b>									
<b>SOUTH Gridline E-D</b>									
PCB-02-35380	PCB - Construct Ground Floor Base Slab Pour GS25a	16	11-Oct-16A	10-Nov-16					
PCB-02-35400	PCB - Construct Ground Floor Base Slab Pour GS24c	17	04-Oct-16A	04-Nov-16					
<b>MIDDLE Gridline D-C</b>									
PCB-02-35410	PCB - Construct Ground Floor Base Slab Pour GS25b	20	22-Sep-16A	10-Nov-16					
PCB-02-35440	PCB - Construct Ground Floor Base Slab Pour GS24f	16	01-Nov-16*	18-Nov-16					
PCB-02-52130	PCB - Construct Ground Floor Base Slab Pour GS24d	18	03-Oct-16A	05-Nov-16					
<b>NORTH Gridline C-B</b>									
PCB-02-35450	PCB - Construct Ground Floor Base Slab Pour GS27b	18	26-Oct-16A	17-Nov-16					
PCB-02-35460	PCB - Construct Ground Floor Base Slab Pour GS26a	18	01-Nov-16*	21-Nov-16					
PCB-02-35470	PCB - Construct Ground Floor Base Slab Pour GS27a	17	13-Oct-16A	16-Nov-16					
PCB-02-35480	PCB - Construct Ground Floor Base Slab Pour GS16c	20	15-Sep-16A	09-Nov-16					
PCB-02-35490	PCB - Construct Ground Floor Base Slab Pour GS17c	16	21-Sep-16A	03-Nov-16					
<b>Columns to Mezzanine Slab (+10.250mPD)</b>									
<b>NORTH - Gridline E-B</b>									
PCB-02-20740	Construct Columns to Mezz Floor Pour MS03	8	26-Sep-16A	02-Nov-16					
PCB-02-20750	Construct Columns to Mezz Floor Pour MS06	8	26-Sep-16A	02-Nov-16					
<b>Mezzanine Floor Slabs (+10.250mPD)</b>									
<b>MIDDLE - Gridline G-E</b>									
PCB-AB-A0100	Earliest Commencement of ABWF/MEP in Cabin 788 Ground Floor MIDDLE	0	01-Nov-16						
PCB-AB-A0110	Earliest Commencement of ABWF/MEP in Cabin 2 Ground Floor MIDDLE	0	15-Nov-16						
<b>Suspended Slabs</b>									
PCB-02-20980	Construct Mezzanine Floor Slab Pour MS02 - 322m <sup>2</sup>	23	26-Sep-16A	05-Nov-16					
<b>Cure and Strip</b>									
PCB-02-21050	Cure & Strip Mezzanine Floor Slab Pour MS02	15	05-Nov-16	15-Nov-16					
<b>NORTH - Gridline E-B</b>									
PCB-AB-A0120	Earliest Commencement of ABWF/MEP in Cabin 6 Ground Floor NORTH	0	08-Dec-16						
PCB-AB-A0130	Earliest Commencement of ABWF/MEP in Cabin 3 Ground Floor NORTH	0	02-Dec-16						
<b>Suspended Slabs</b>									
PCB-02-21060	Construct Mezzanine Floor Slab Pour MS06 - 323m <sup>2</sup>	23	02-Nov-16*	28-Nov-16					
PCB-02-21070	Construct Mezzanine Floor Slab Pour MS03 - 335m <sup>2</sup>	31	02-Nov-16*	22-Nov-16					
<b>Cure and Strip</b>									
PCB-02-21080	Cure & Strip Mezzanine Floor Slab Pour MS03	15	22-Nov-16	02-Dec-16					
PCB-02-21090	Cure & Strip Mezzanine Floor Slab Pour MS06	15	28-Nov-16	08-Dec-16					
<b>Columns to First Floor (+14.700mPD)</b>									
<b>NORTH - Gridline E-B</b>									
PCB-02-21180	Construct Columns to 1st Floor Pour FS27 (Abv MS03)	8	23-Nov-16*	01-Dec-16					
PCB-02-21250	Construct Columns to 1st Floor pour FS21 (1No+2 x MC) (Abv GS27a, 25b)	8	17-Nov-16*	25-Nov-16					
PCB-02-21260	Construct Columns to 1st Floor pour FS22 (3 No) (Abv GS27a, 27b, 24f, 25b)	8	29-Nov-16*	07-Dec-16					
PCB-02-21270	Construct Columns to 1st Floor pour FS20 (3 No) (Abv GS17a, GS17b, GS27a, 25b)	8	17-Nov-16*	25-Nov-16					
PCB-02-21280	Construct Columns to 1st Floor pour FS19 (Abv MS06)	8	29-Nov-16*	07-Dec-16					
PCB-02-33500	Construct Columns to 1st Floor pour FS23 (1No+2 x MC) (Abv GS27b, 24f)	8	24-Nov-16*	02-Dec-16					
PCB-02-33510	Construct Columns to 1st Floor pour FS24 (3 No) (Abv GS6a, 24e)	8	21-Nov-16*	30-Nov-16					
PCB-02-33520	Construct Columns to 1st Floor pour FS25 (1No+2 x MC) (Abv GS26a, 24d)	8	21-Nov-16*	30-Nov-16					
PCB-02-33530	Construct Columns to 1st Floor pour FS26 (3 No) (Abv GS16a, 16b, 24d, 26a)	8	04-Nov-16*	14-Nov-16					
<b>First Floor Level Slabs (+14.7mPD)</b>									
<b>SOUTH - Gridline J-G</b>									
PCB-AB-A0150	Earliest Commencement of ABWF/MEP in Cabin 1 Mezz Floor SOUTH	0	26-Jan-17						

- Actual Work
- Remaining Work
- Critical Remaining Work
- ◆ ◆ Milestone

## Three Month Rolling Programme

HKMZB HKBCF - Passenger Clearance Building

Date	Revision	Checked	Approved
01-Nov-16	Three Month Rolling Programme	JW/SGJ	

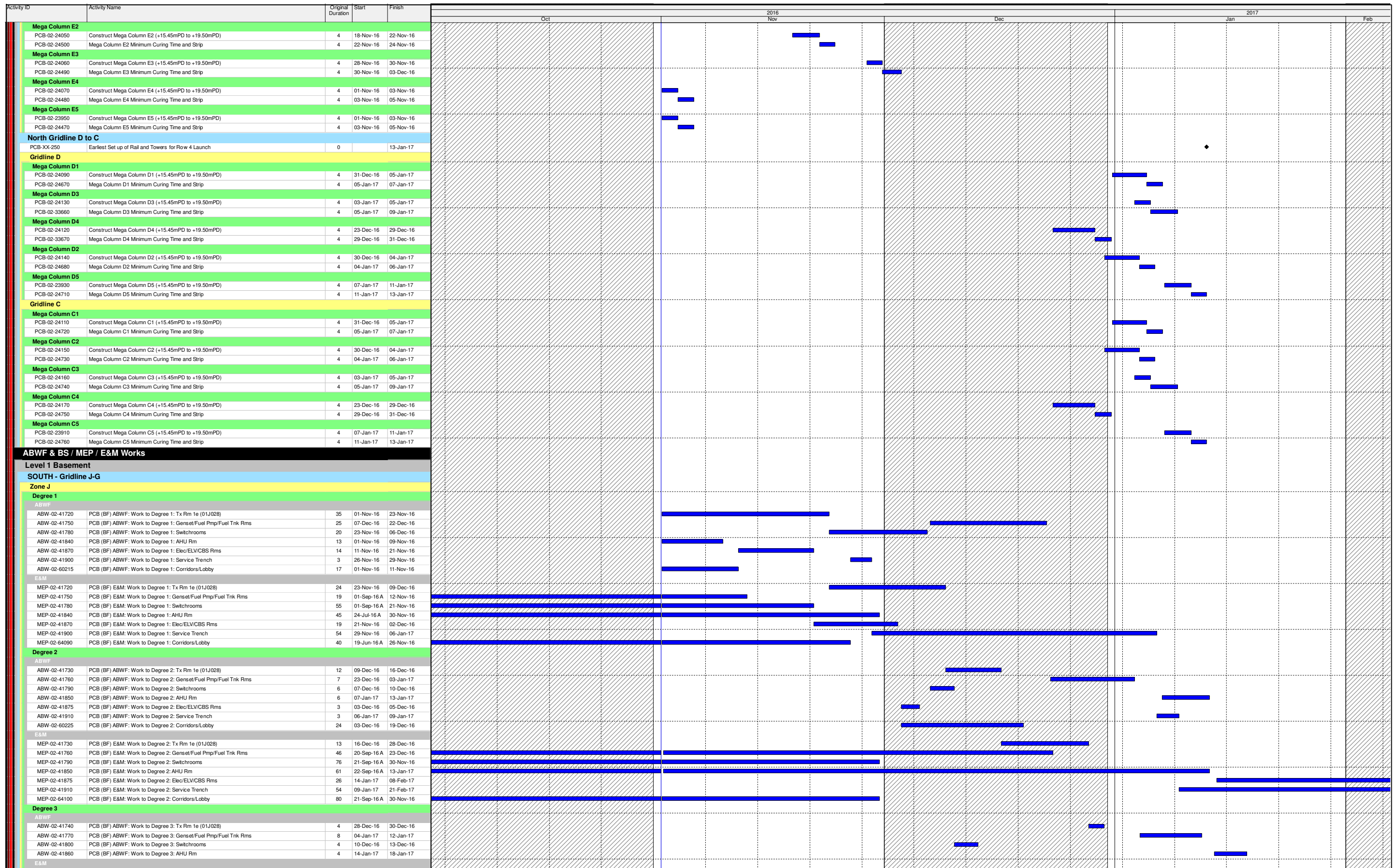


- Actual Work
- Remaining Work
- Critical Remaining Work
- Milestone

### Three Month Rolling Programme

HKMZB HKBCF - Passenger Clearance Building

Date	Revision	Checked	Approved
01-Nov-16	Three Month Rolling Programme	JW/SGJ	

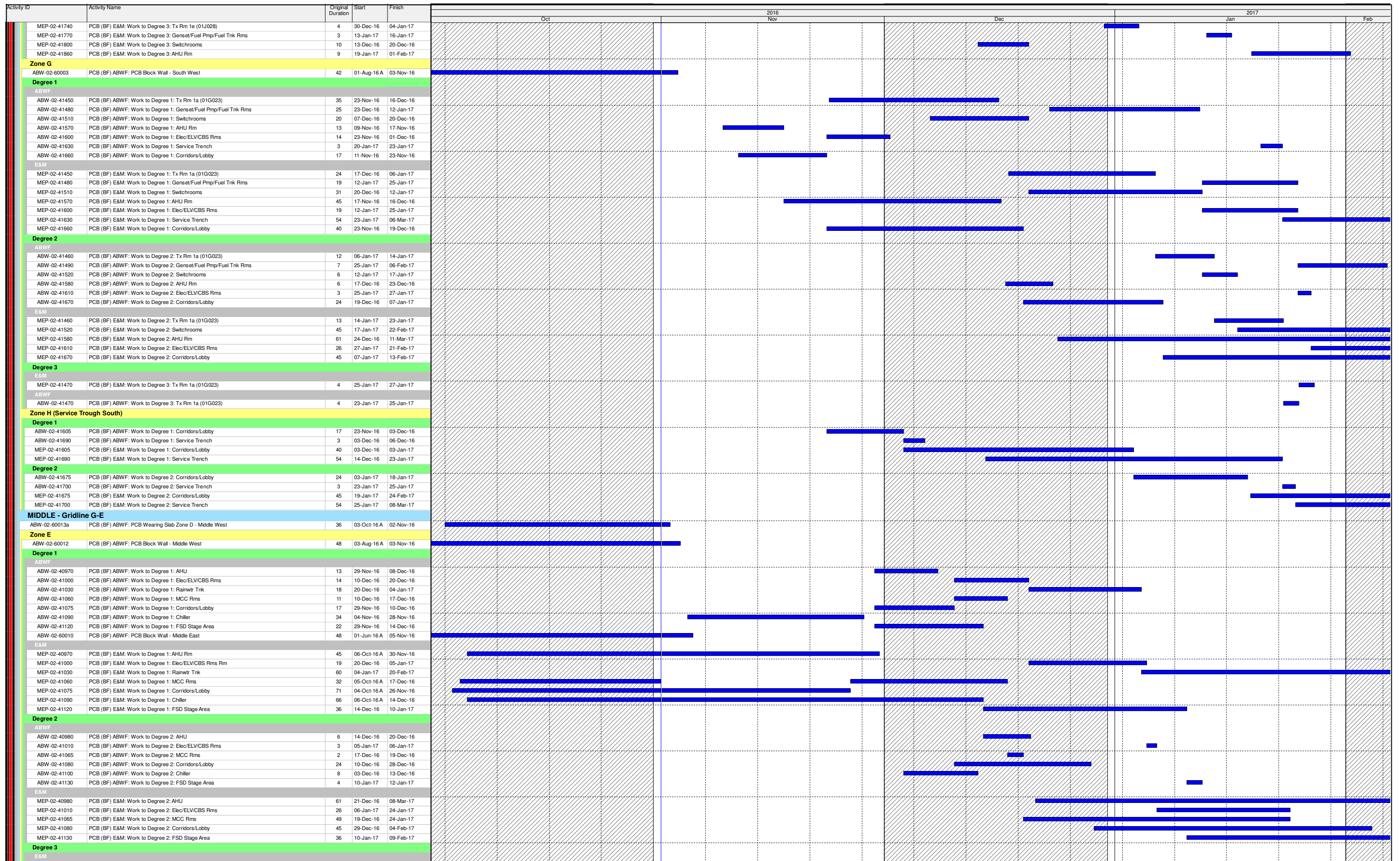


- Actual Work
- Remaining Work
- Critical Remaining Work
- Milestone

## Three Month Rolling Programme

HKMZB HKBCF - Passenger Clearance Building

Date	Revision	Checked	Approved
01-Nov-16	Three Month Rolling Programme	JW/SGJ	



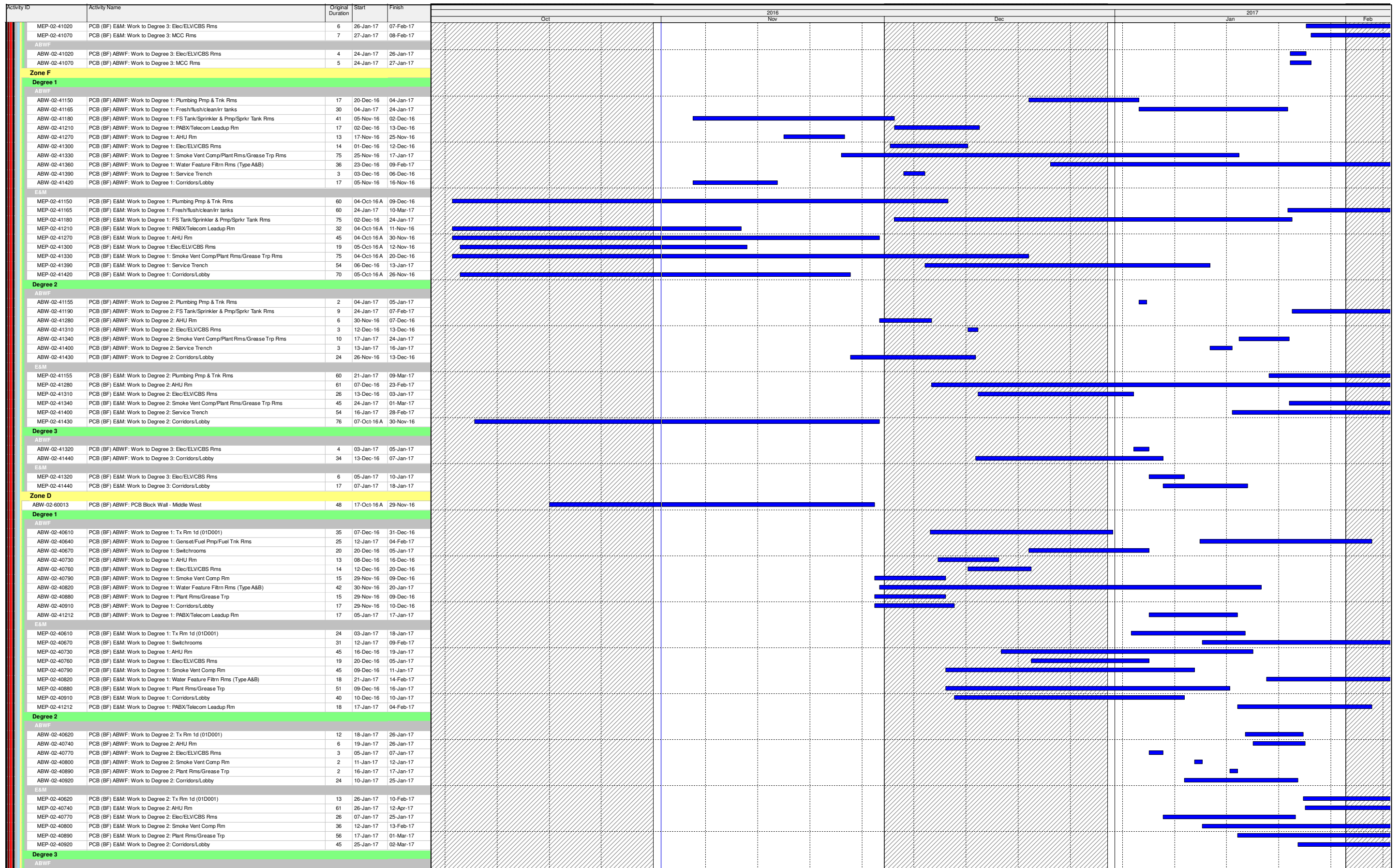
- Actual Work
- Remaining Work
- Critical Remaining Work
- ◆ Milestone

## Three Month Rolling Programme

HKMZB HKBCF - Passenger Clearance Building

Date	Revision	Checked	Approved
01-Nov-16	Three Month Rolling Programme	JW/SGJ	



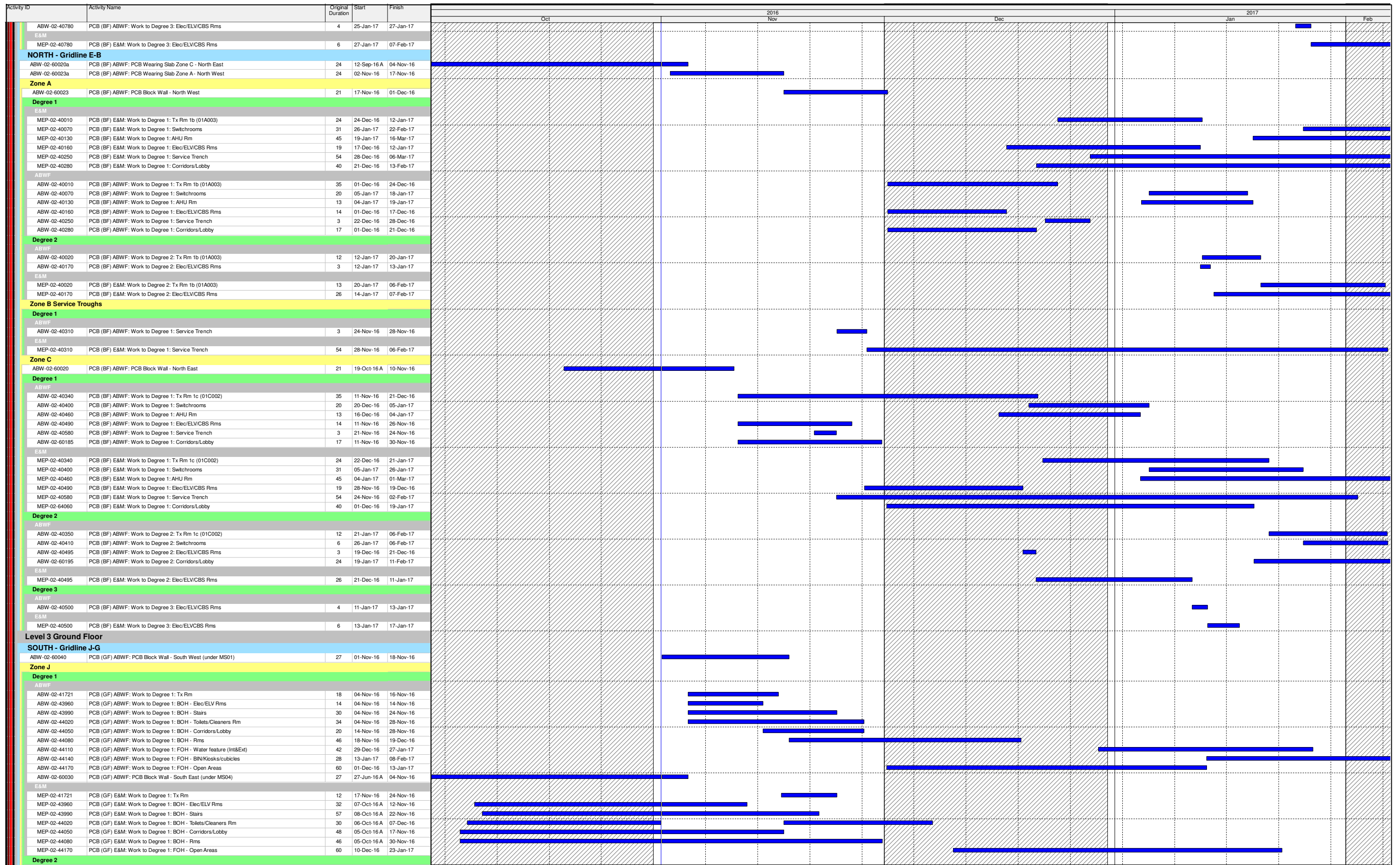


- Actual Work
- Remaining Work
- Critical Remaining Work
- Milestone

## Three Month Rolling Programme

HKMZB HKBCF - Passenger Clearance Building

Date	Revision	Checked	Approved
01-Nov-16	Three Month Rolling Programme	JW/SGJ	

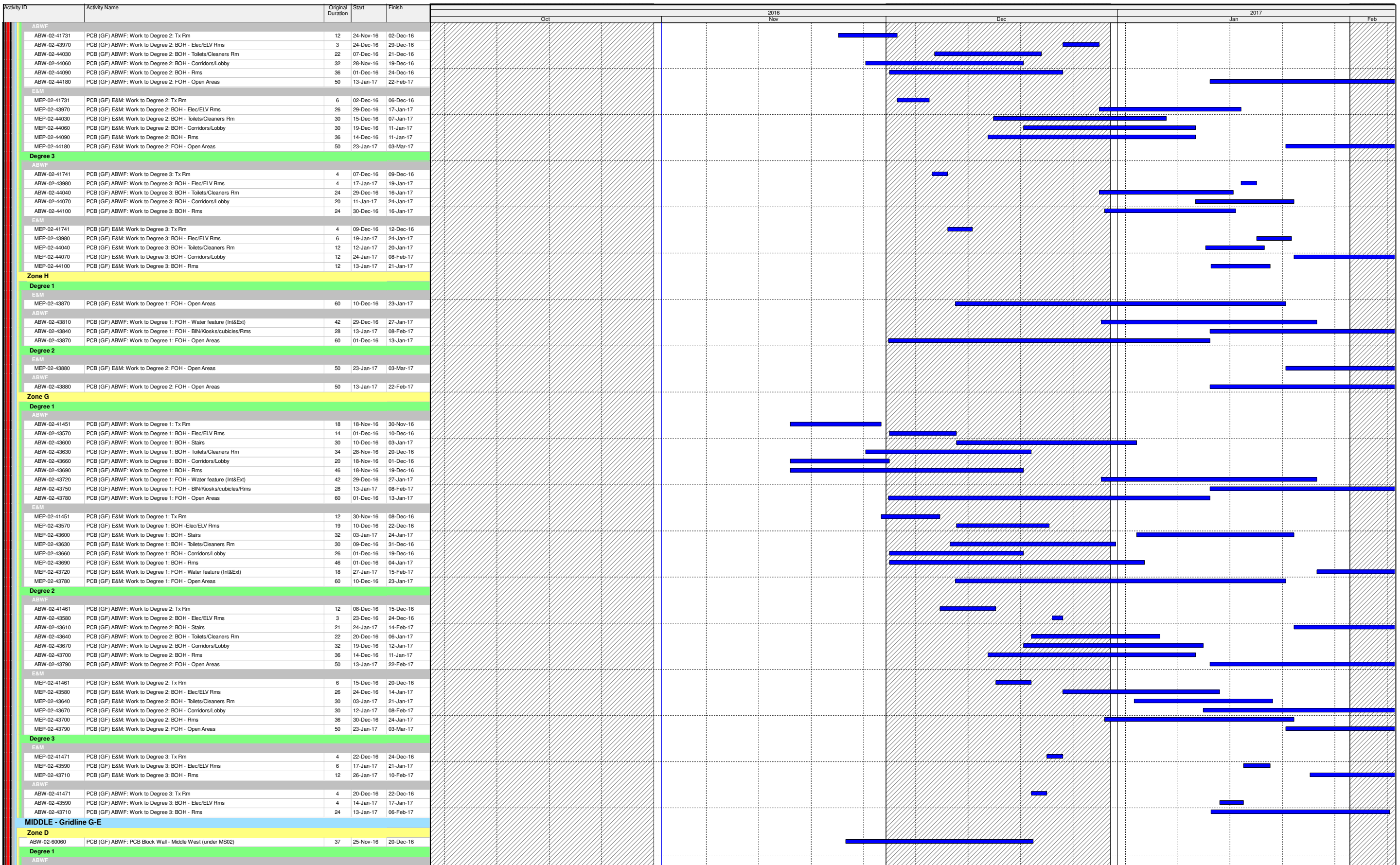


- Actual Work
- Remaining Work
- Critical Remaining Work
- ◆ Milestone

## Three Month Rolling Programme

HKMZB HKBCF - Passenger Clearance Building

Date	Revision	Checked	Approved
01-Nov-16	Three Month Rolling Programme	JW/SGJ	



- Actual Work
- Remaining Work
- Critical Remaining Work
- Milestone

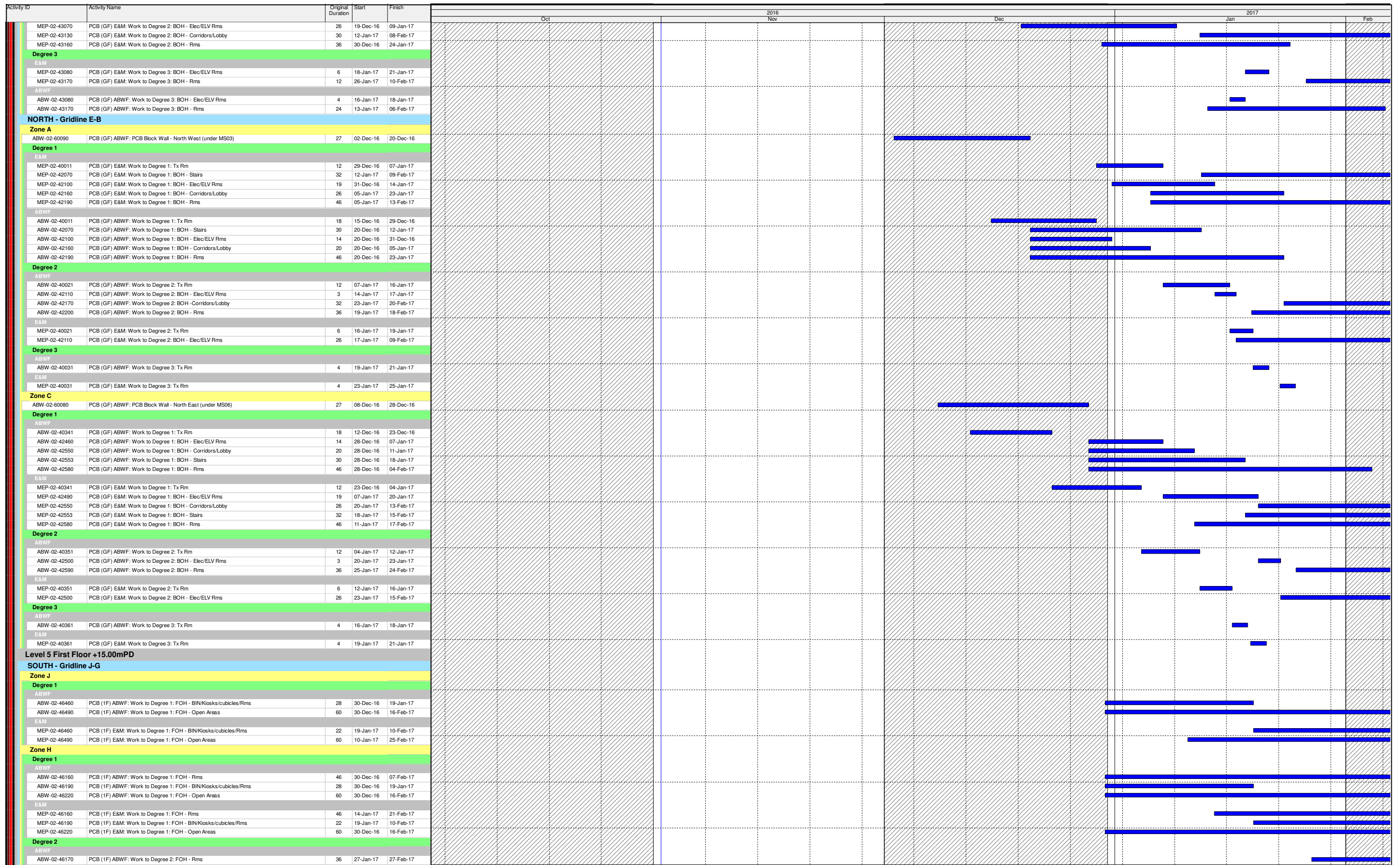
# Three Month Rolling Programme

## HKMZB HKBCF - Passenger Clearance Building

Date	Revision	Checked	Approved
01-Nov-16	Three Month Rolling Programme	JW/SGJ	





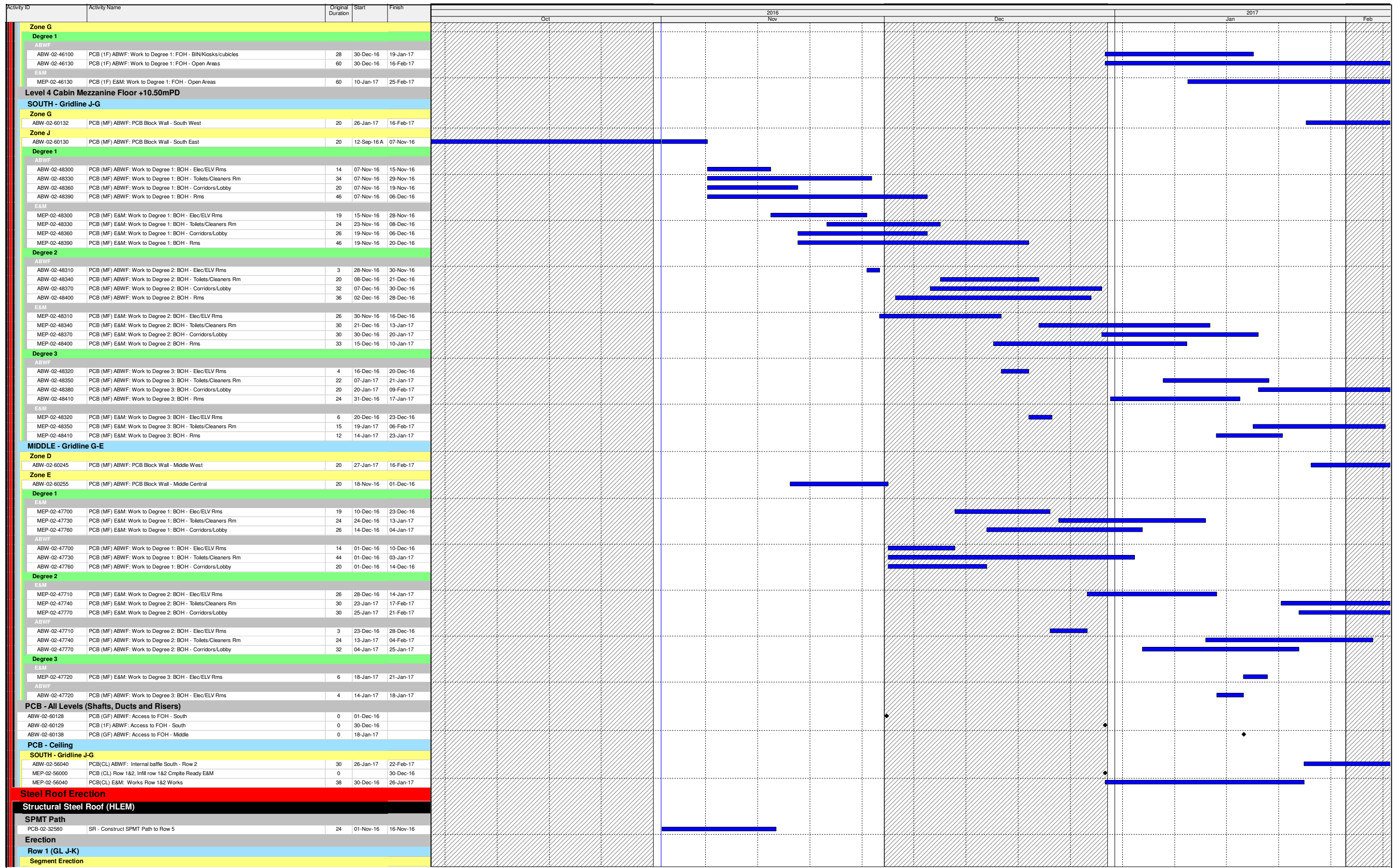


- Actual Work
- Remaining Work
- Critical Remaining Work
- ◆ Milestone

## Three Month Rolling Programme

HKMZB HKBCF - Passenger Clearance Building

Date	Revision	Checked	Approved
01-Nov-16	Three Month Rolling Programme	JW/SGJ	

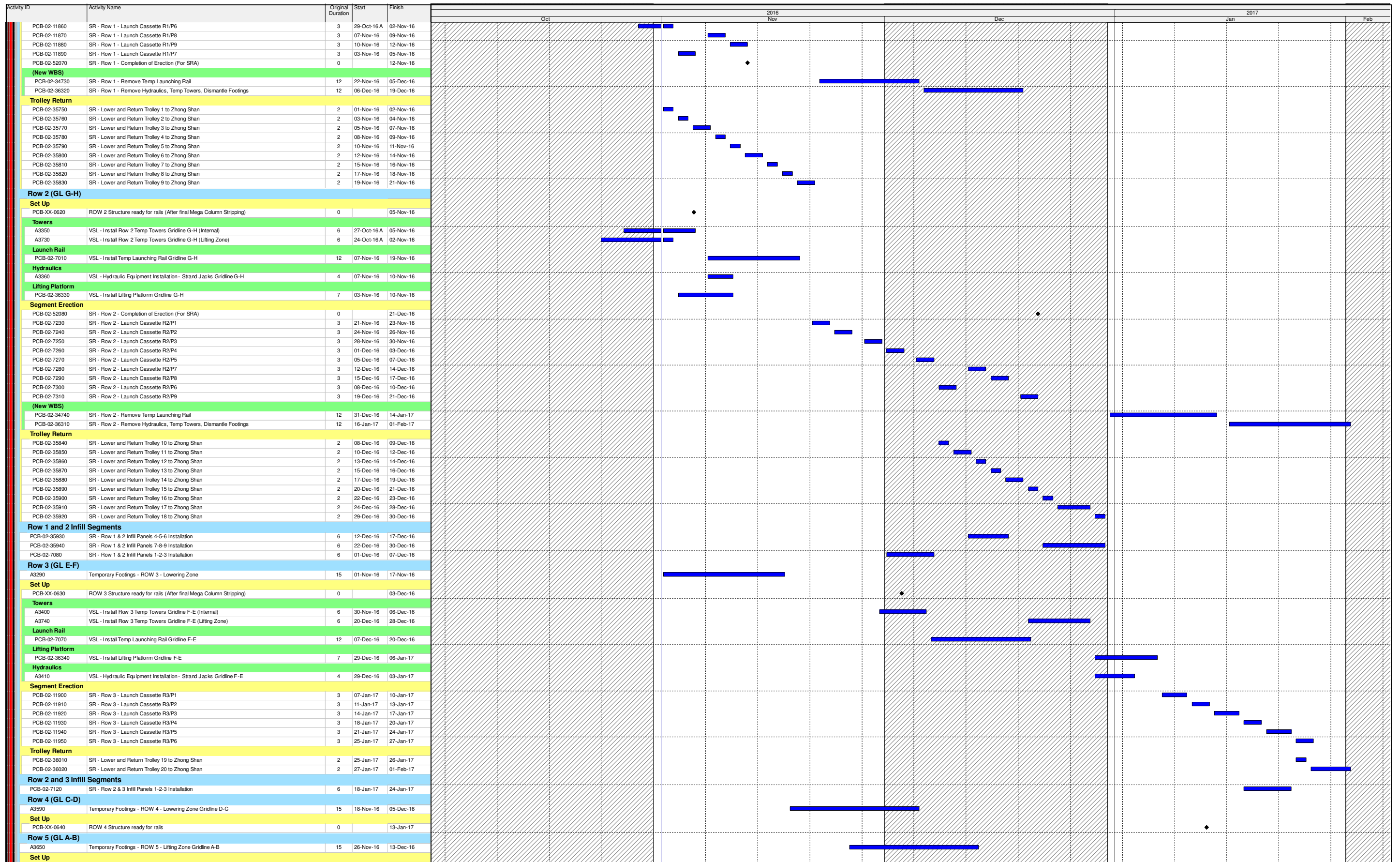


## Three Month Rolling Programme

HKMZB HKBCF - Passenger Clearance Building

- Actual Work
- Remaining Work
- Critical Remaining Work
- Milestone

Date	Revision	Checked	Approved
01-Nov-16	Three Month Rolling Programme	JW/SGJ	

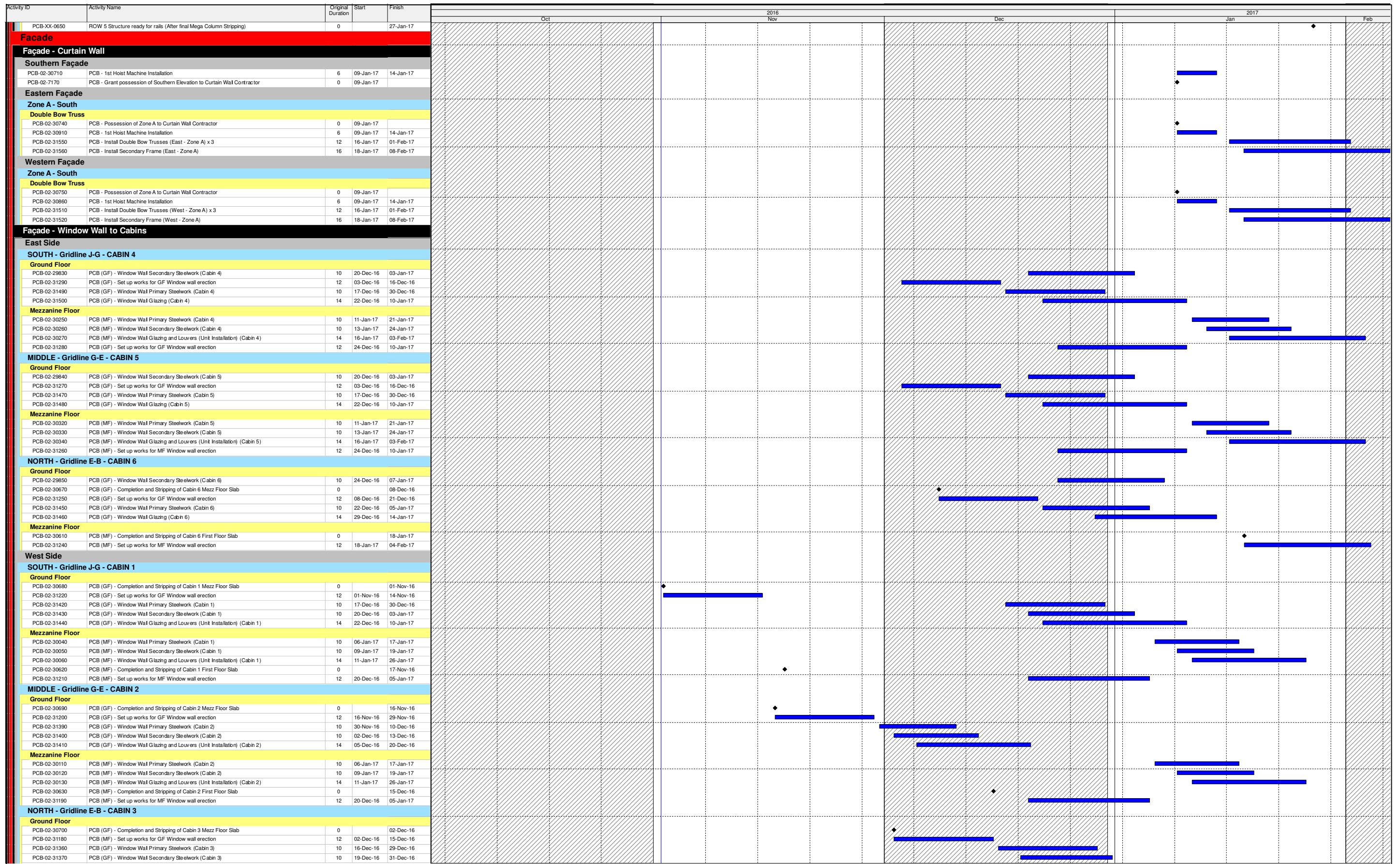


- Actual Work
- Remaining Work
- Critical Remaining Work
- Milestone

## Three Month Rolling Programme

HKMZB HKBCF - Passenger Clearance Building

Date	Revision	Checked	Approved
01-Nov-16	Three Month Rolling Programme	JW/SGJ	



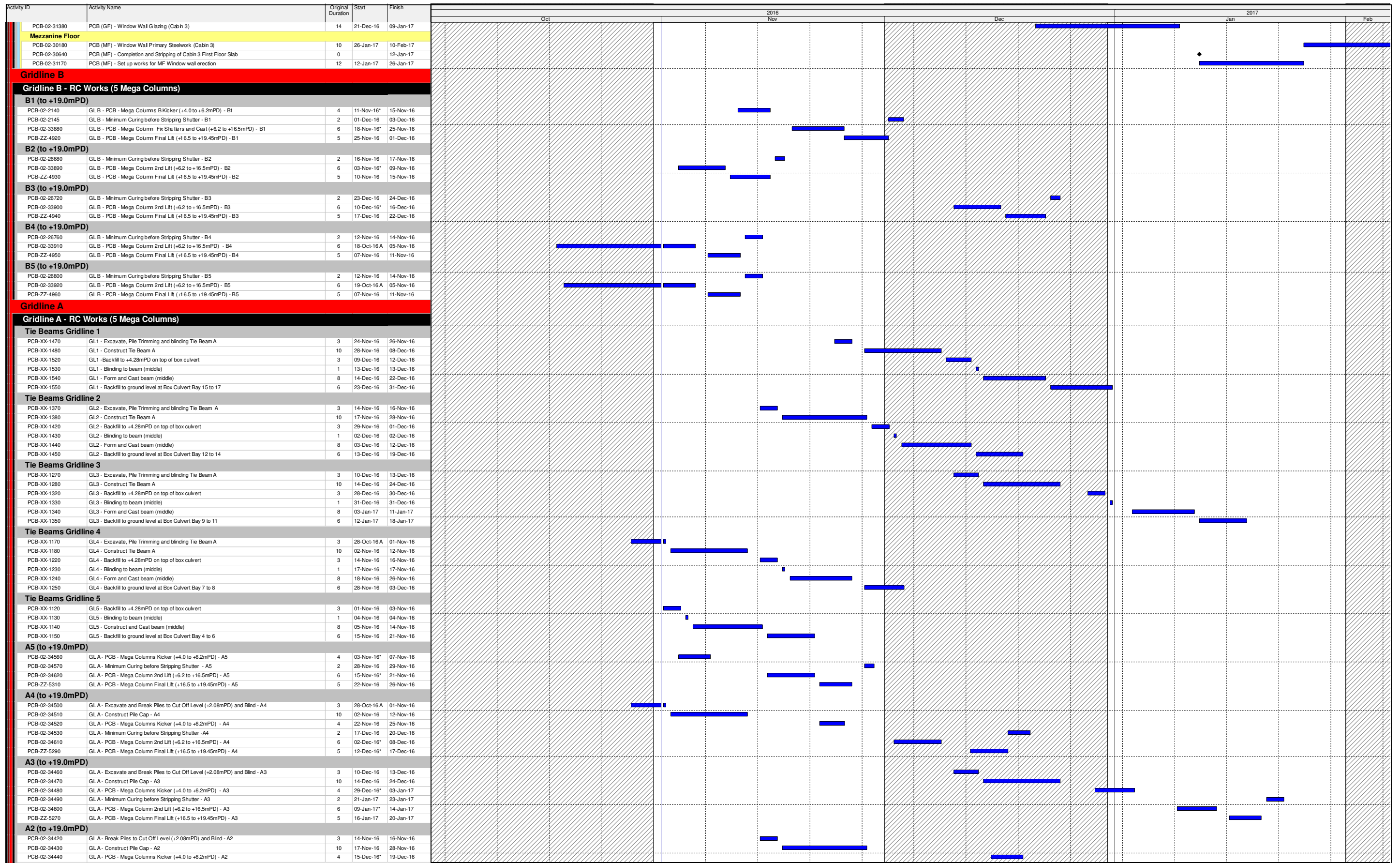
- Actual Work
- Remaining Work
- Critical Remaining Work
- Milestone

## Three Month Rolling Programme

HKMZB HKBCF - Passenger Clearance Building

Date	Revision	Checked	Approved
01-Nov-16	Three Month Rolling Programme	JW/SGJ	





- Actual Work
- Remaining Work
- Critical Remaining Work
- Milestone

## Three Month Rolling Programme

HKMZB HKBCF - Passenger Clearance Building

Date	Revision	Checked	Approved
01-Nov-16	Three Month Rolling Programme	JW/SGJ	





