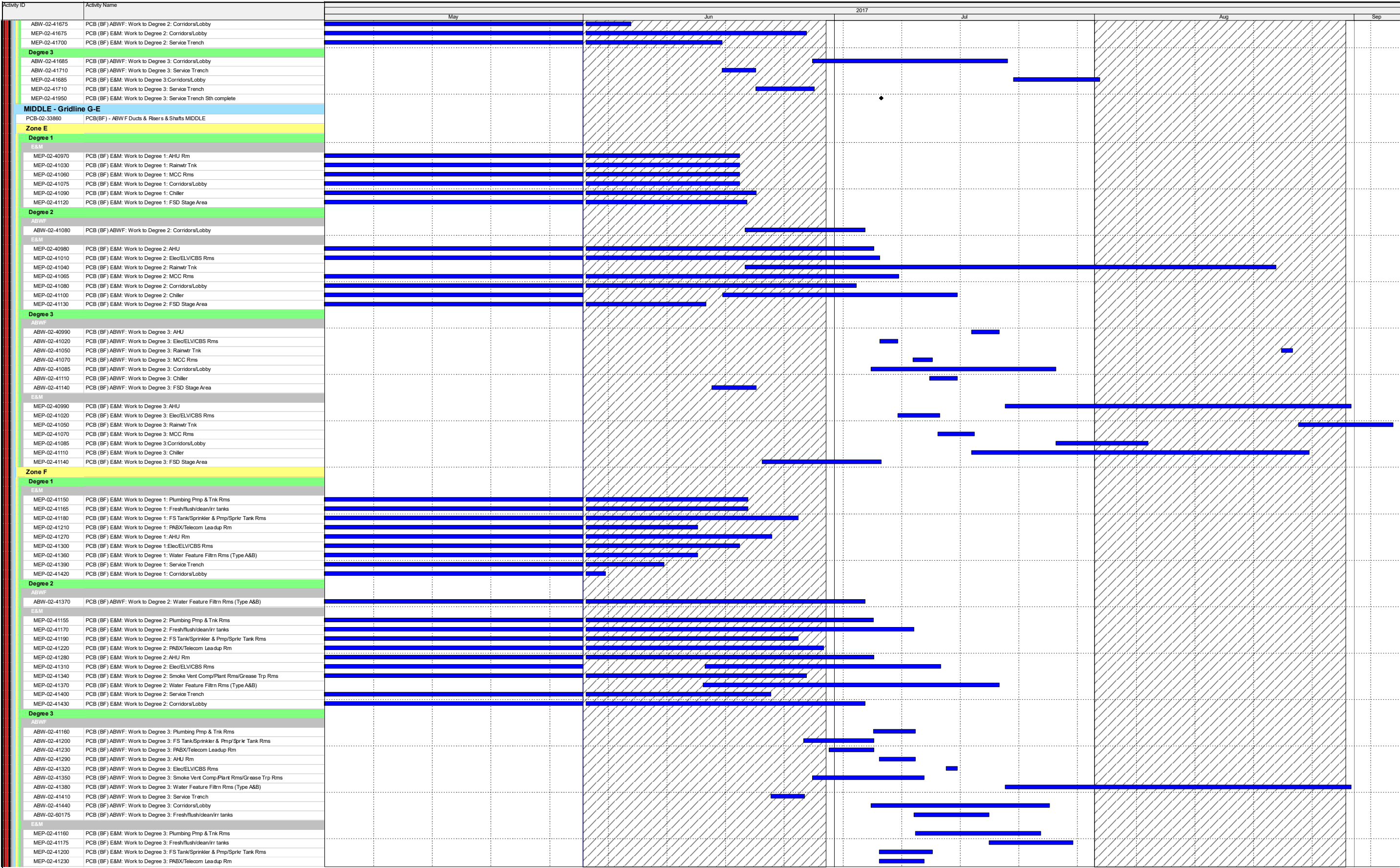


Three Month Rolling Programme

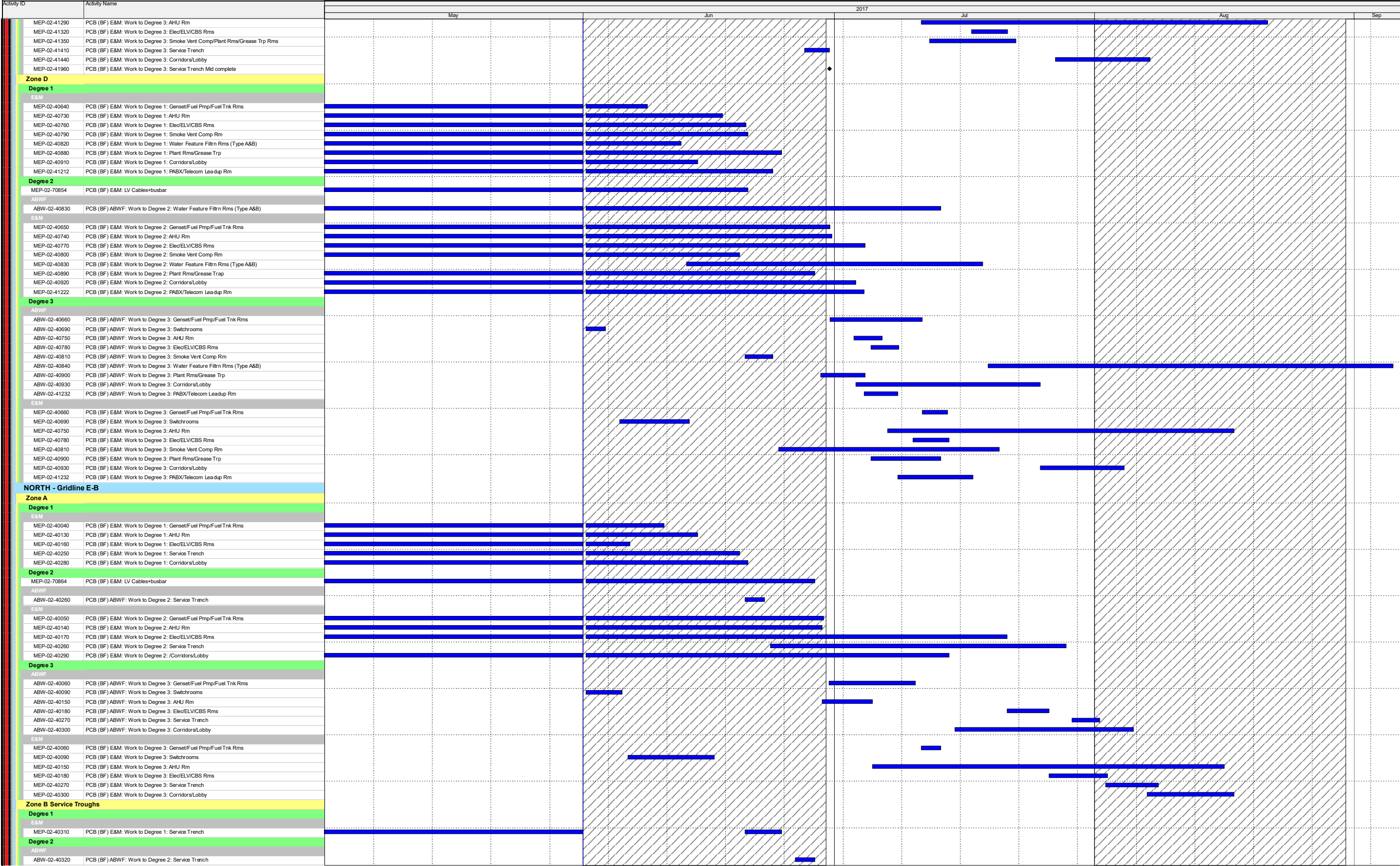
HKMZB HKBCF - Passenger Clearance Building

Page 1 of 23



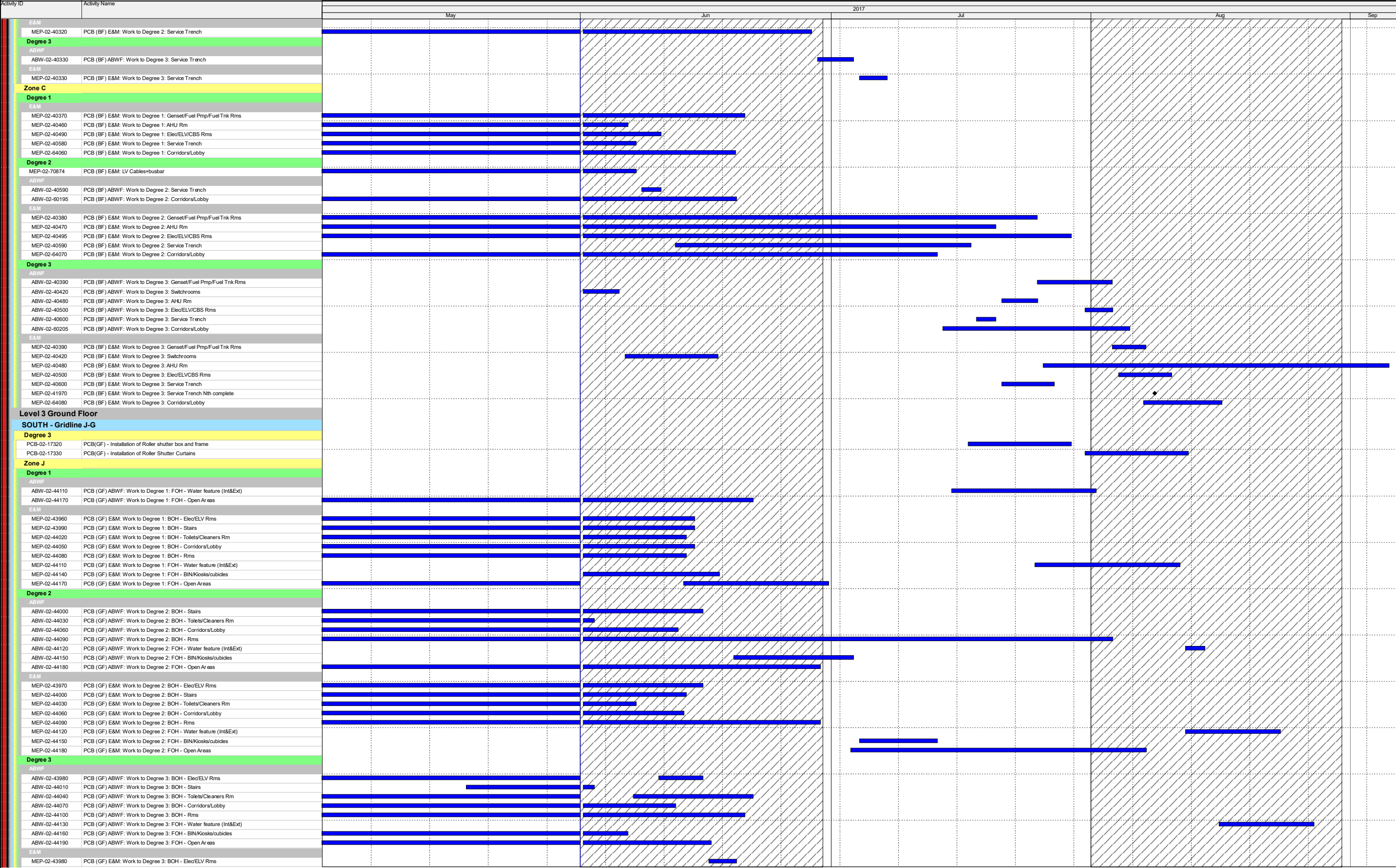
- Actual Work
- Remaining Work
- Critical Remaining Work
- Milestone

Date	Revision	Checked	Approved



- Actual Work
- Remaining Work
- Critical Remaining Work
- Milestone

Date	Revision	Checked	Approved



Actual Work

Remaining Work

Critical Remaining Work

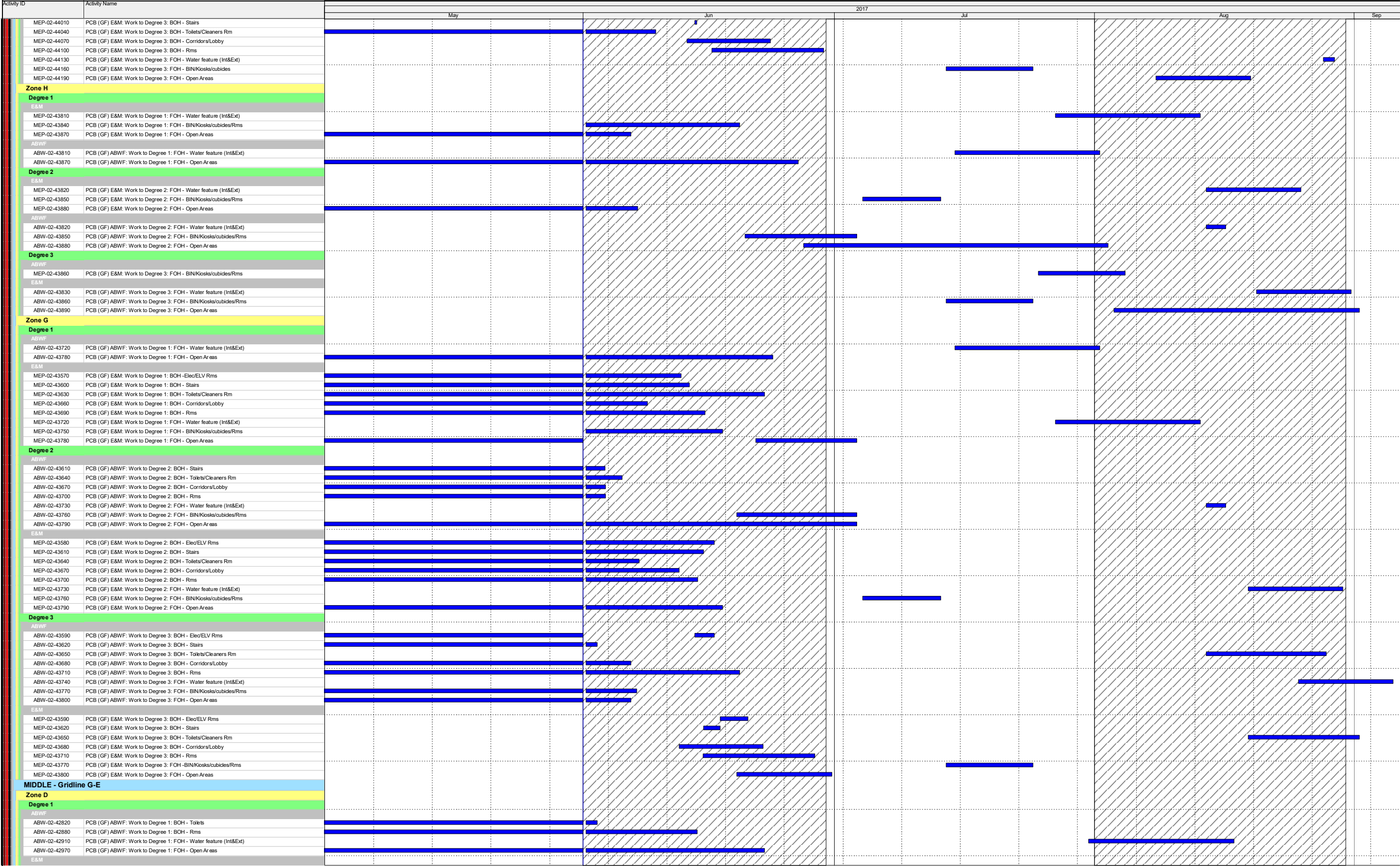
Milestone

Three Month Rolling Programme

HKMZB HKBCF - Passenger Clearance Building

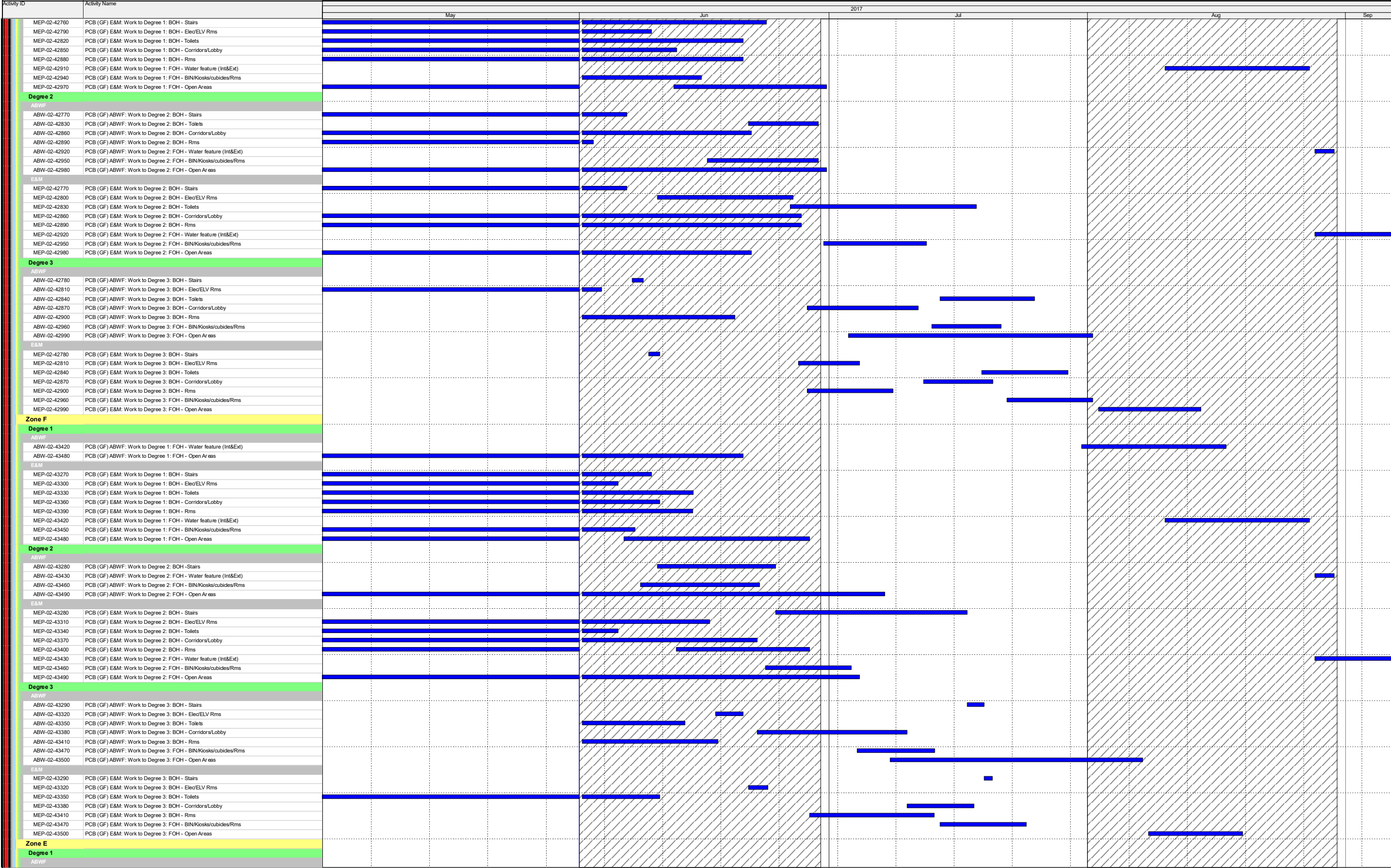
Page 4 of 23





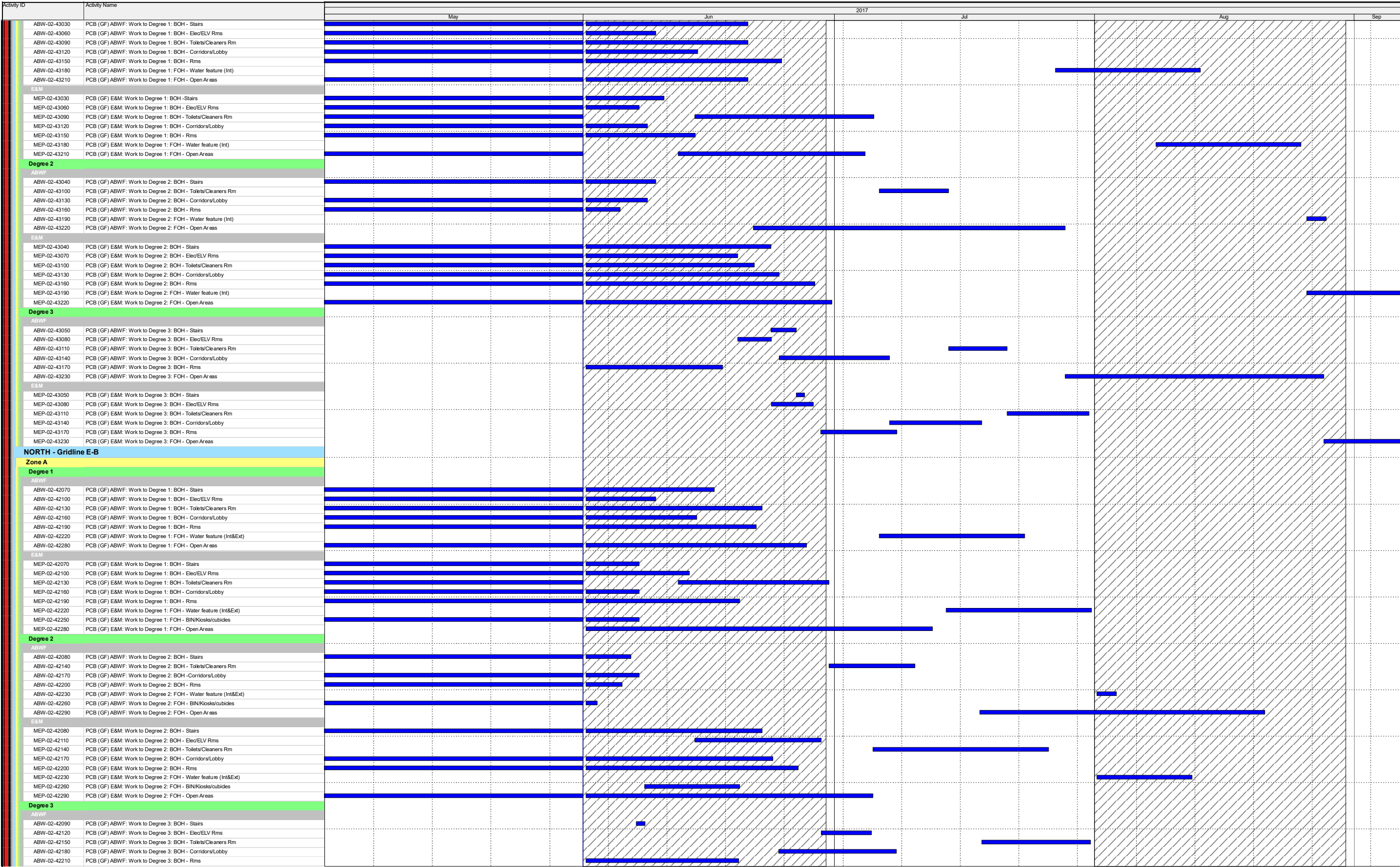
- Actual Work
- Remaining Work
- Critical Remaining Work
- Milestone

Date	Revision	Checked	Approved



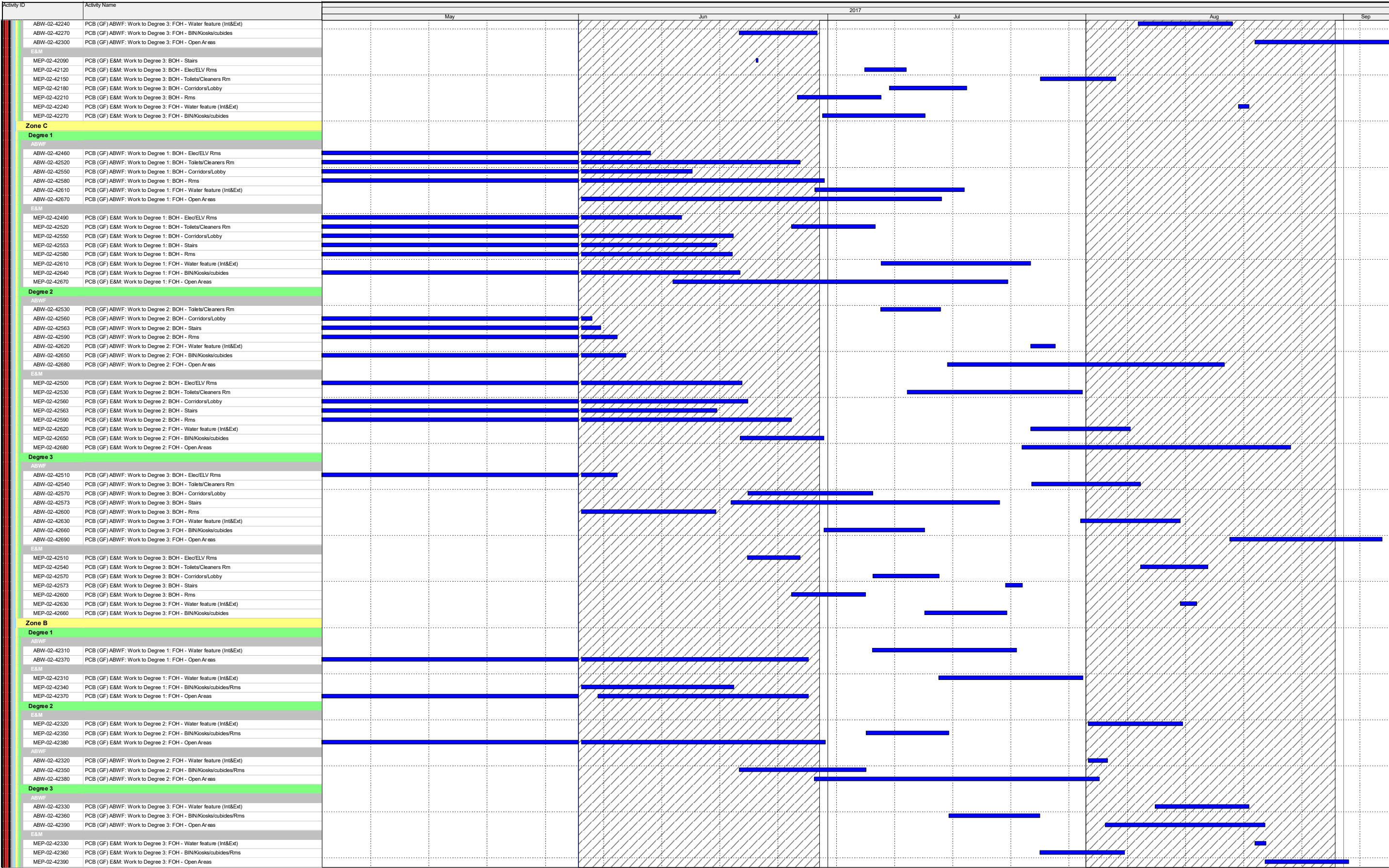
- Actual Work
- Remaining Work
- Critical Remaining Work
- Milestone

Date	Revision	Checked	Approved



- Actual Work
- Remaining Work
- Critical Remaining Work
- Milestone

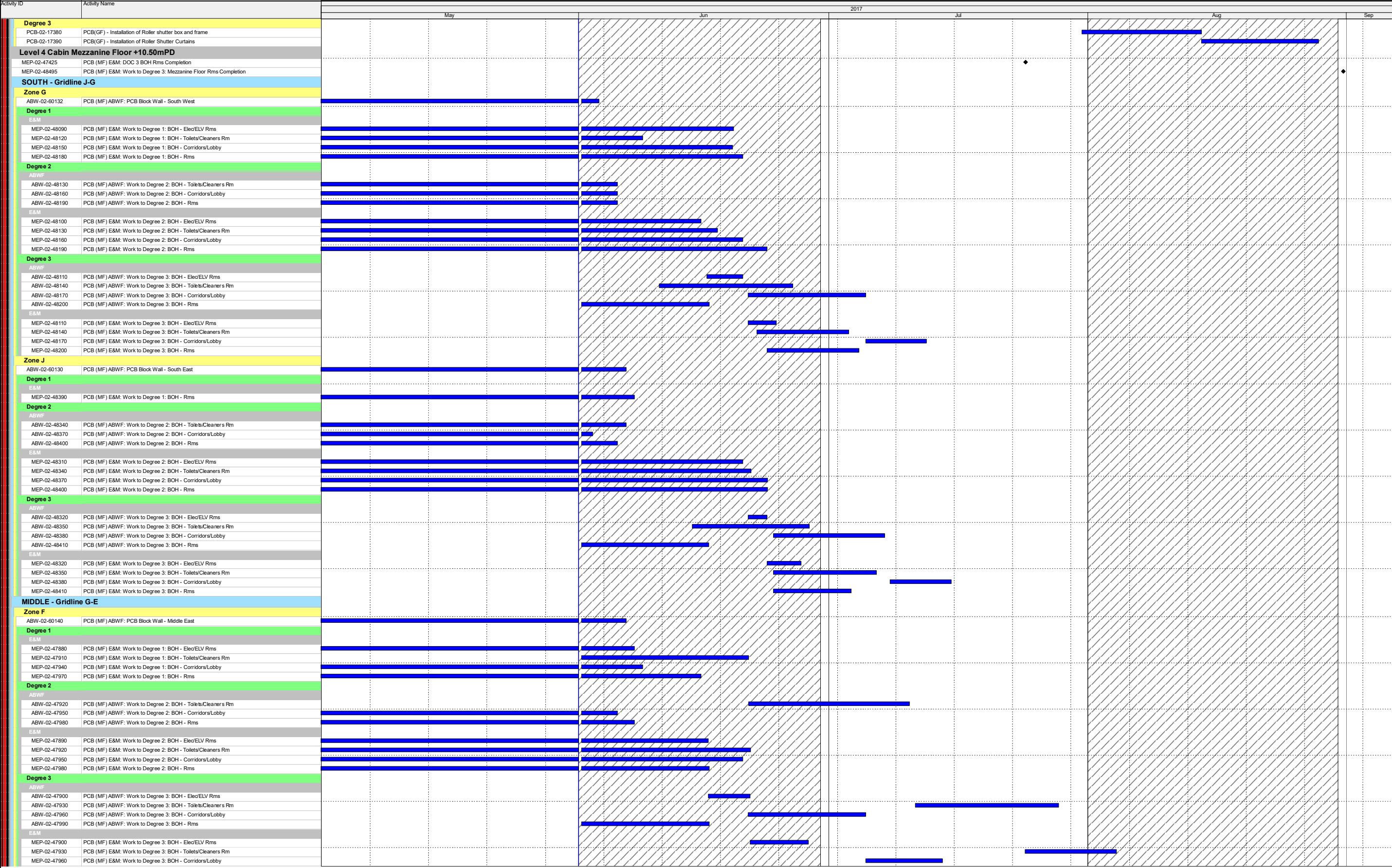
Date	Revision	Checked	Approved



- Actual Work
- Remaining Work
- Critical Remaining Work
- Milestone

Date	Revision	Checked	Approved





Actual Work

Remaining Work

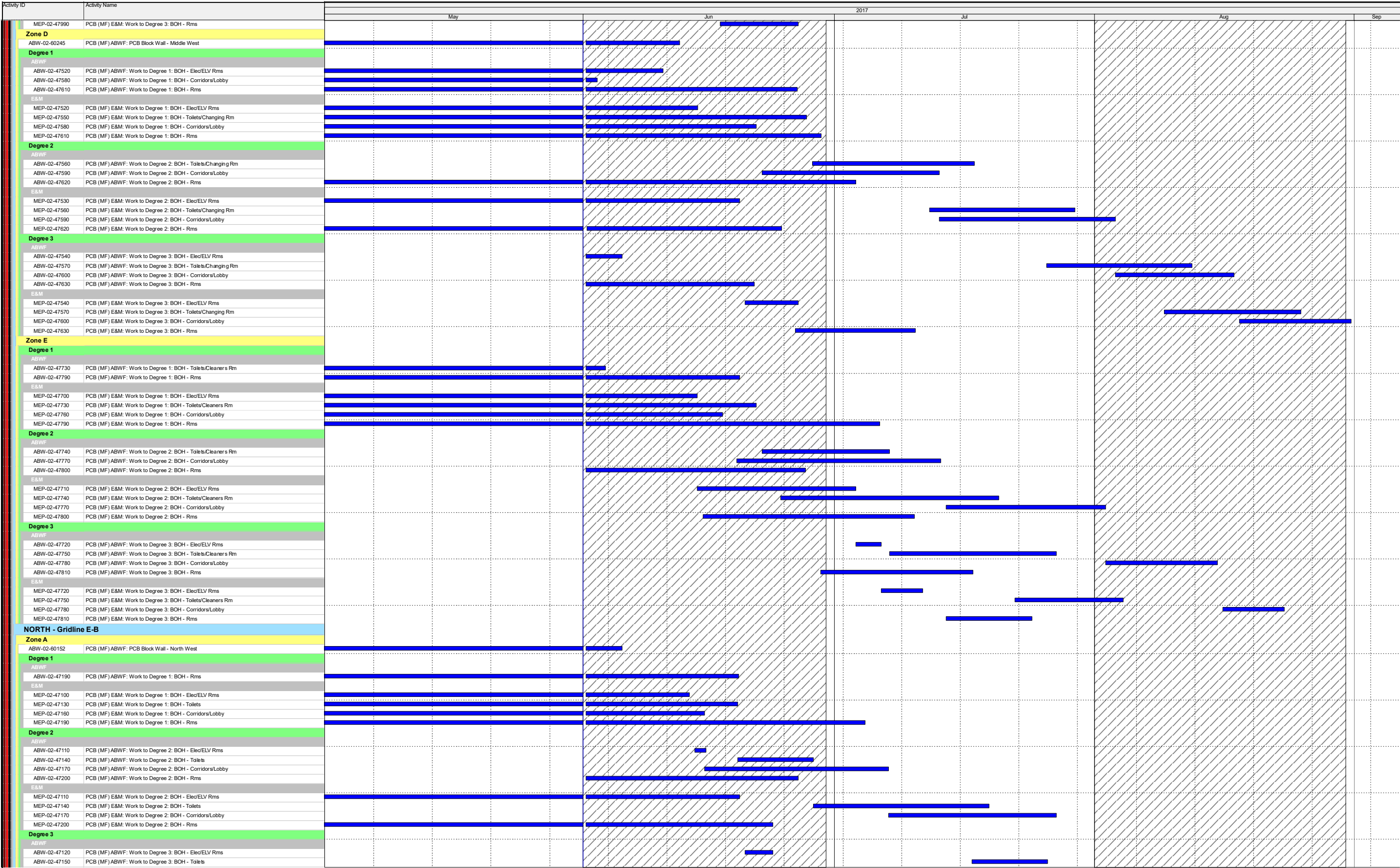
Critical Remaining Work

Milestone

Three Month Rolling Programme

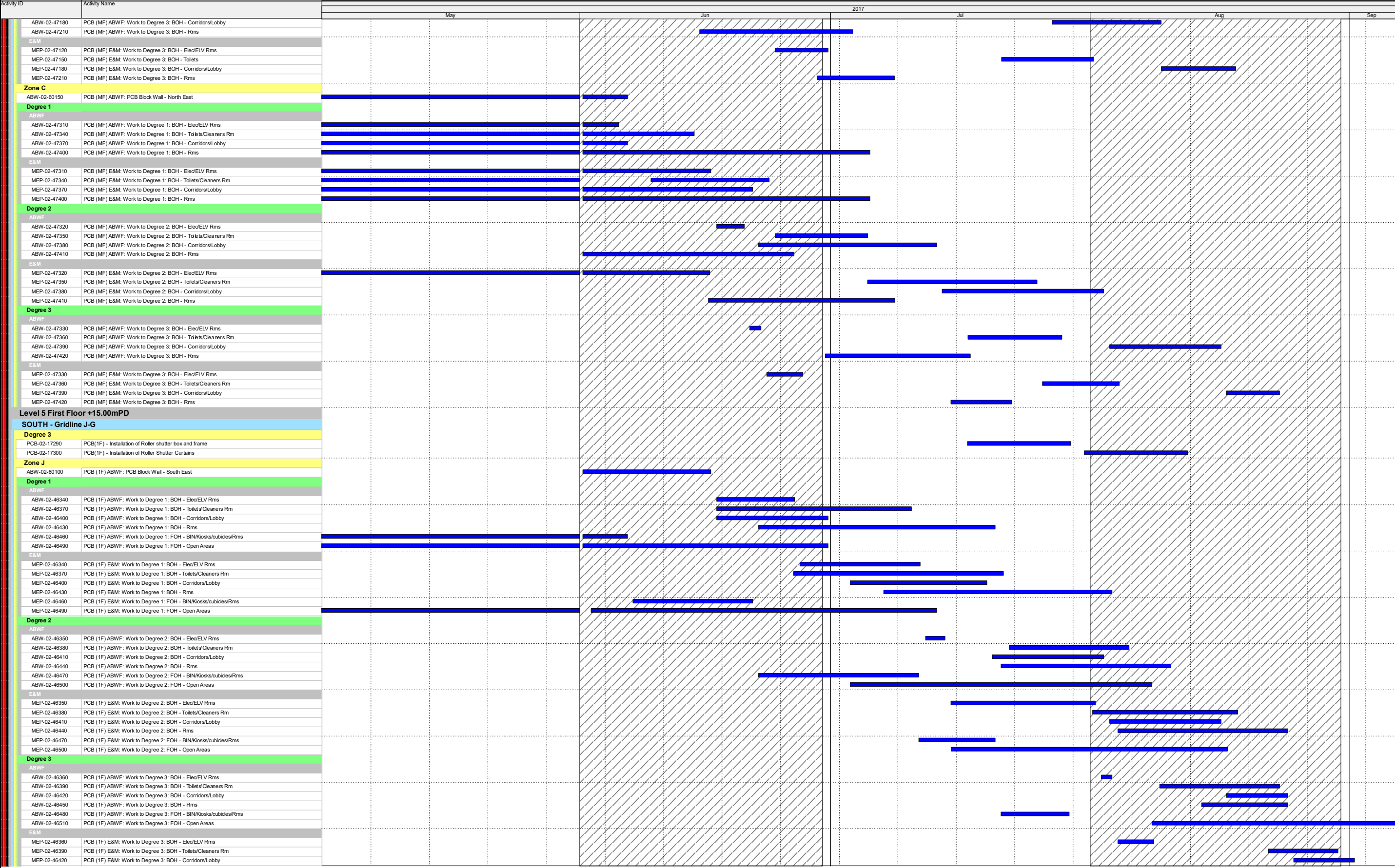
HKMZB HKBCF - Passenger Clearance Building

Page 9 of 23

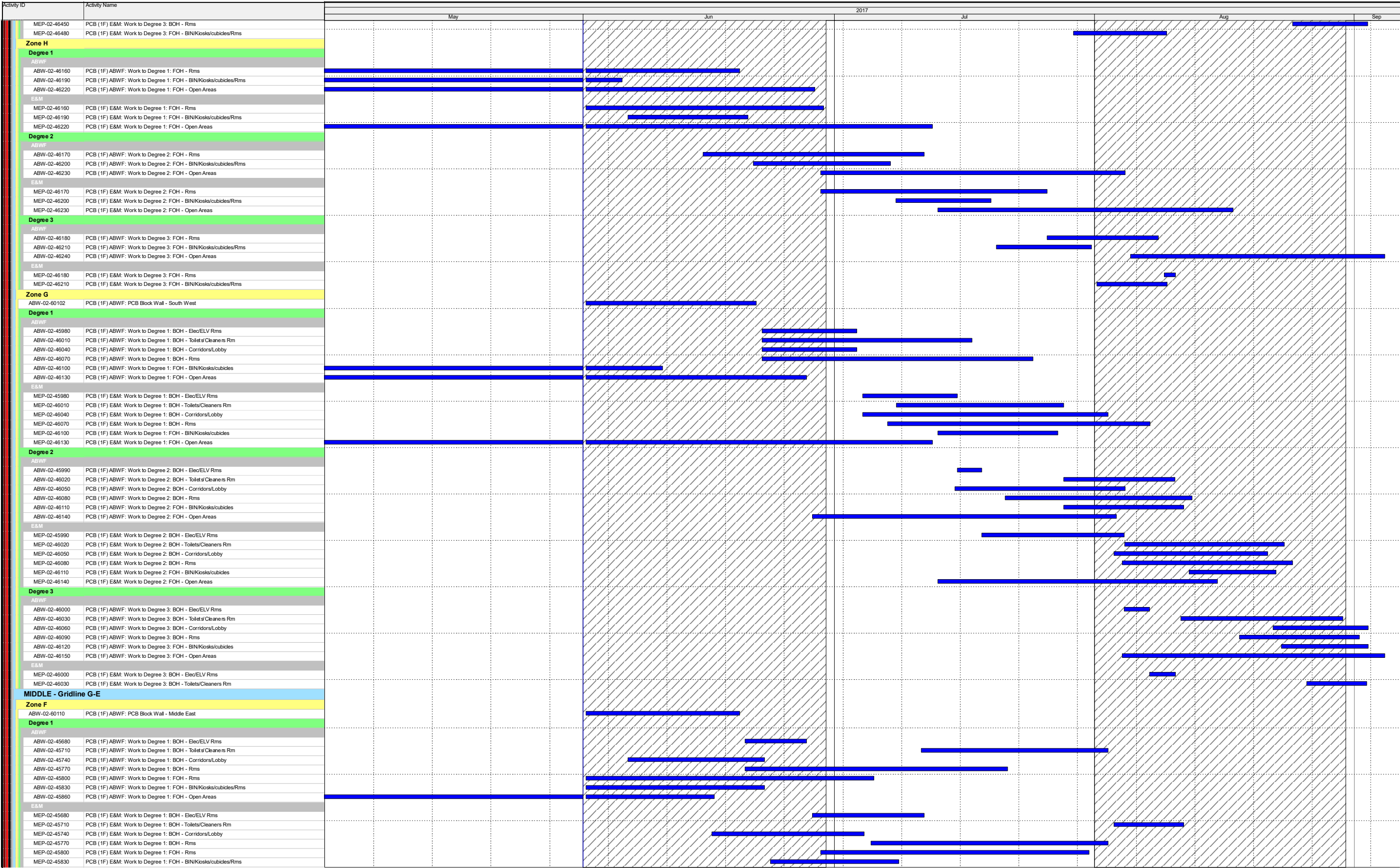


- Actual Work
- Remaining Work
- Critical Remaining Work
- Milestone

Date	Revision	Checked	Approved



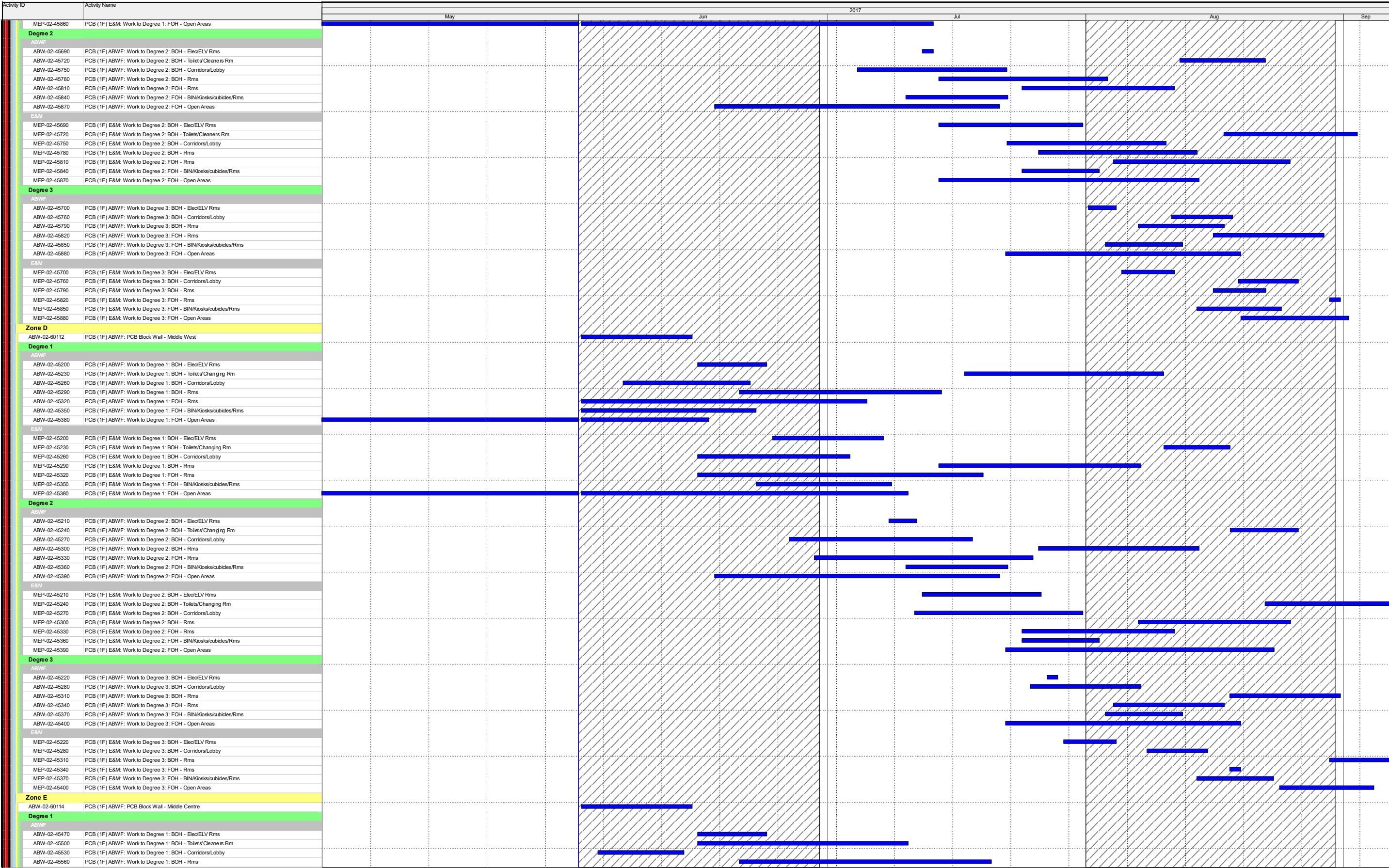
<div></div> Actual Work	<h1>Three Month Rolling Programme</h1> <h2>HKMZB HKBCF - Passenger Clearance Building</h2> <p>Page 11 of 23</p>	Date	Revision	Checked	Approved
<div></div> Remaining Work					
<div></div> Critical Remaining Work					
<div></div> Milestone					



- Actual Work
- Remaining Work
- Critical Remaining Work
- Milestone

Date	Revision	Checked	Approved

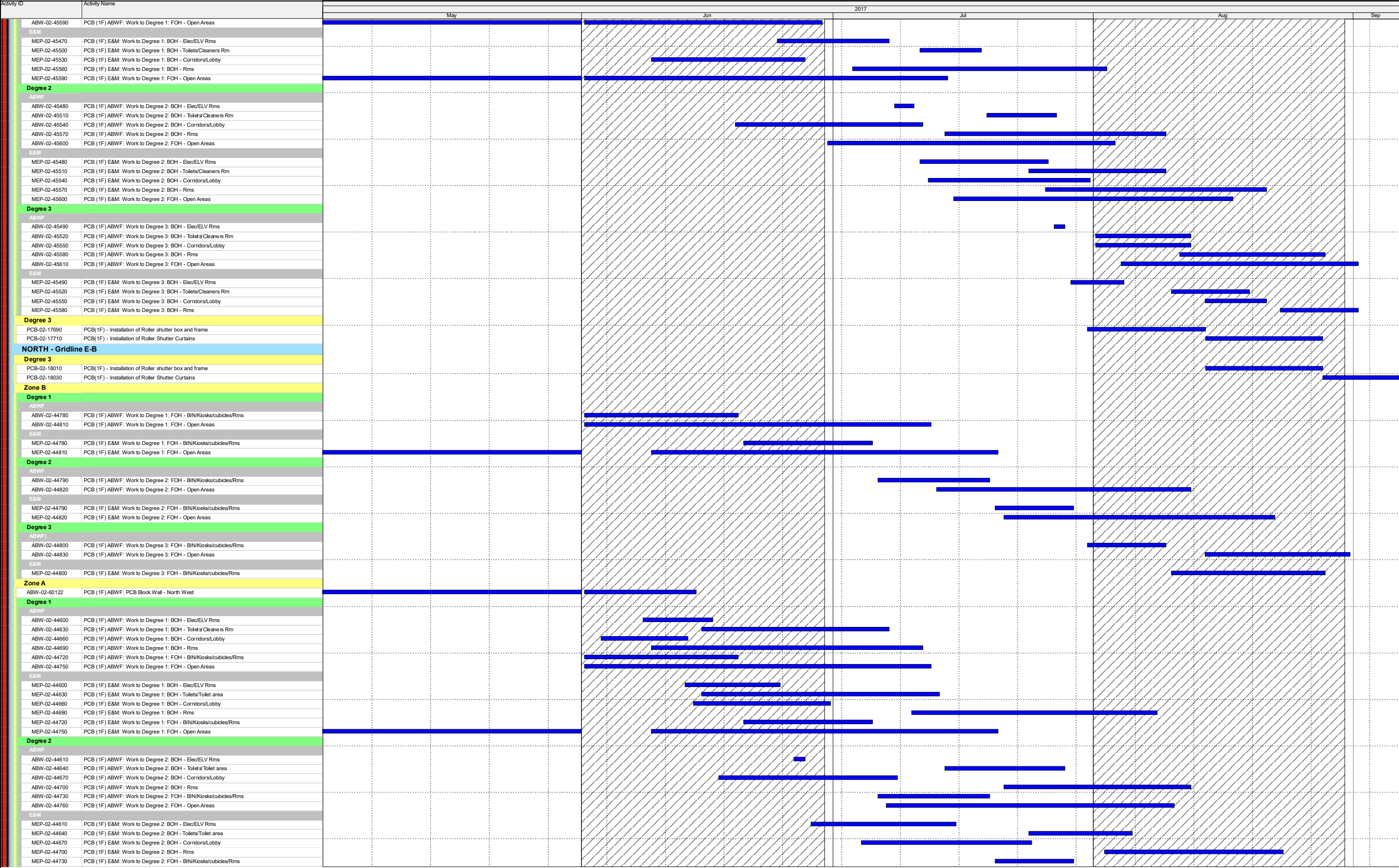




- Actual Work
- Remaining Work
- Critical Remaining Work
- ◆◆

Milestone

Date	Revision	Checked	Approved



Actual Work

Remaining Work

Critical Remaining Work

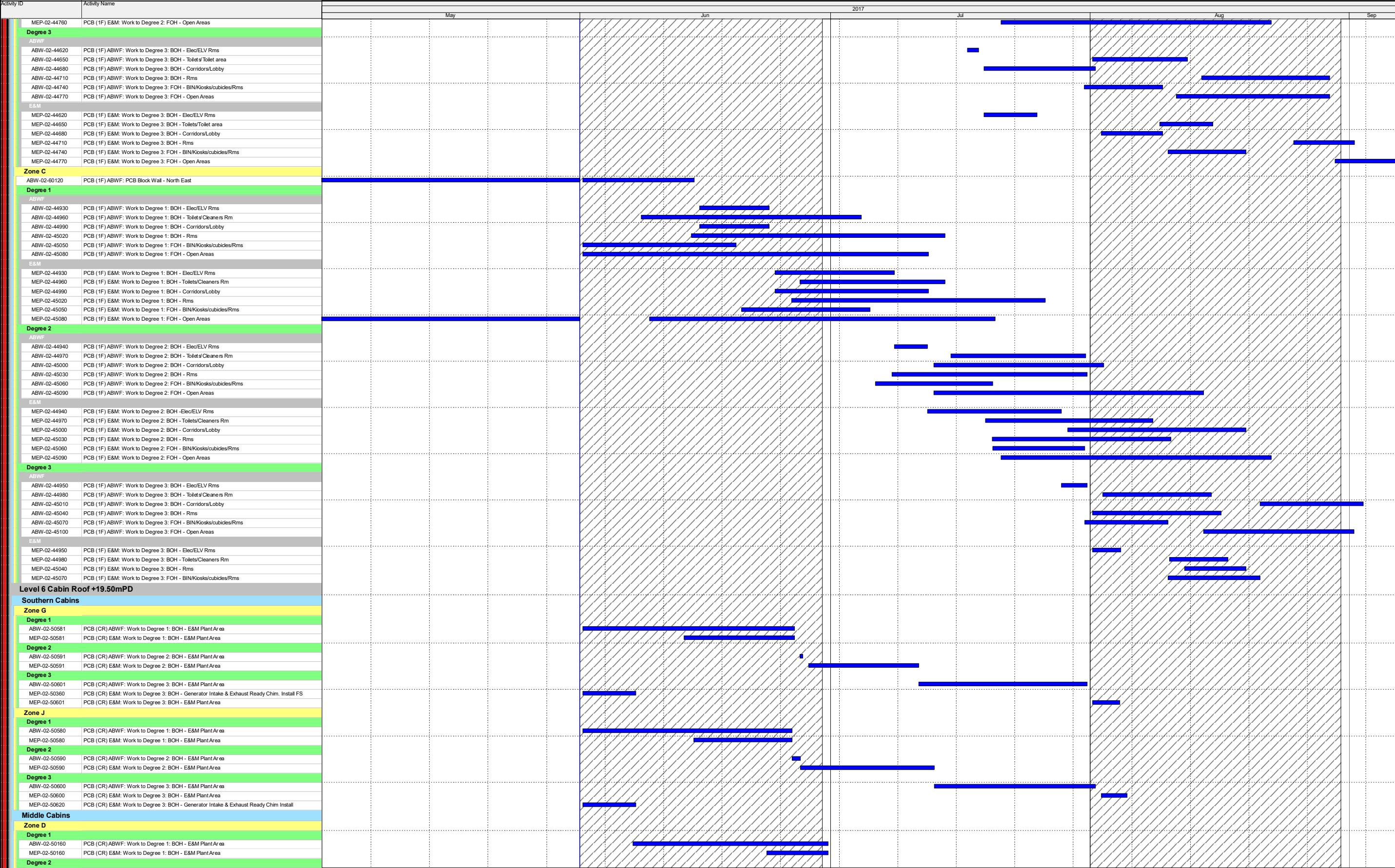
Milestone

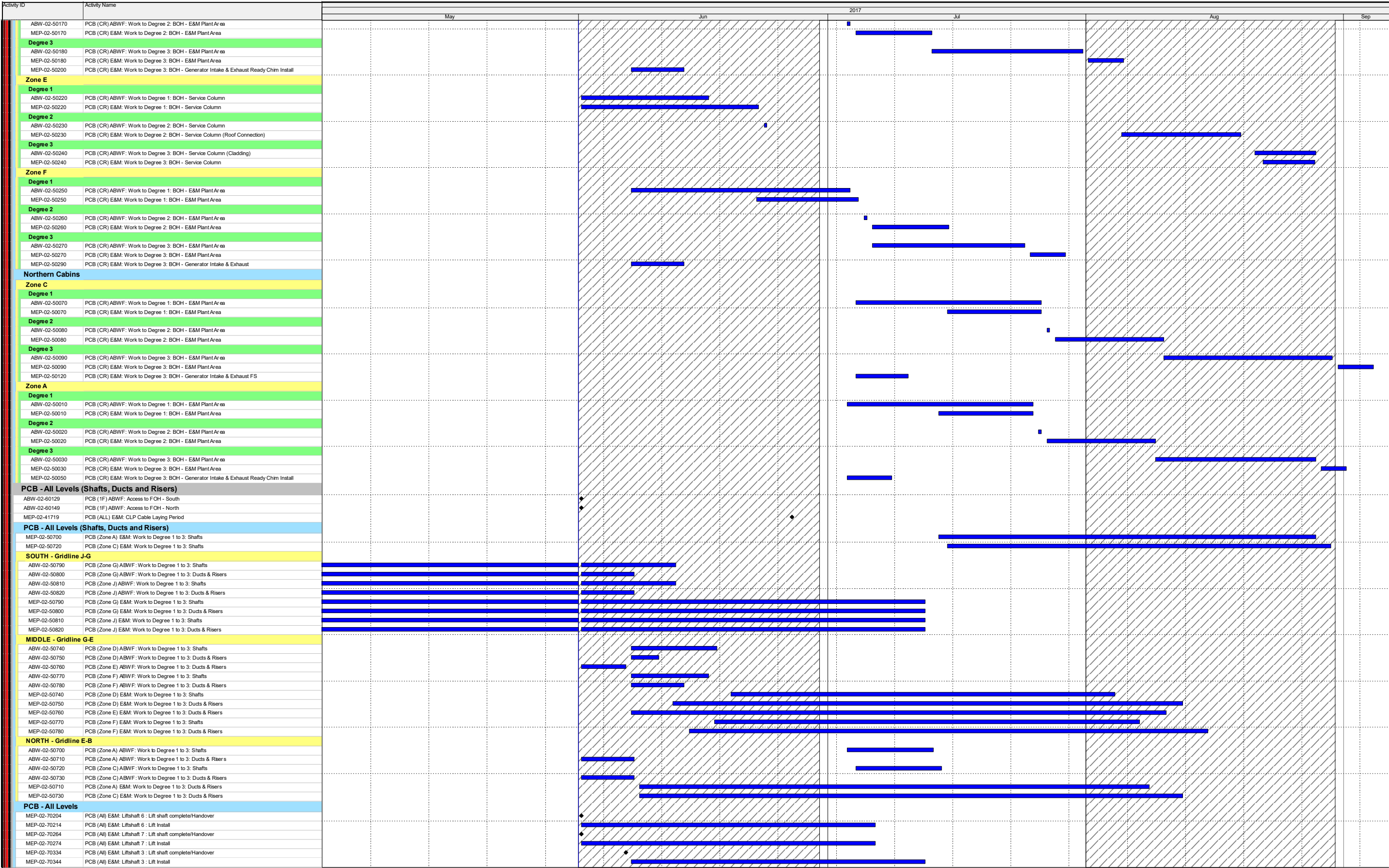
Three Month Rolling Programme

HKMZB HKBCF - Passenger Clearance Building

Page 14 of 23

Date	Revision	Checked	Approved



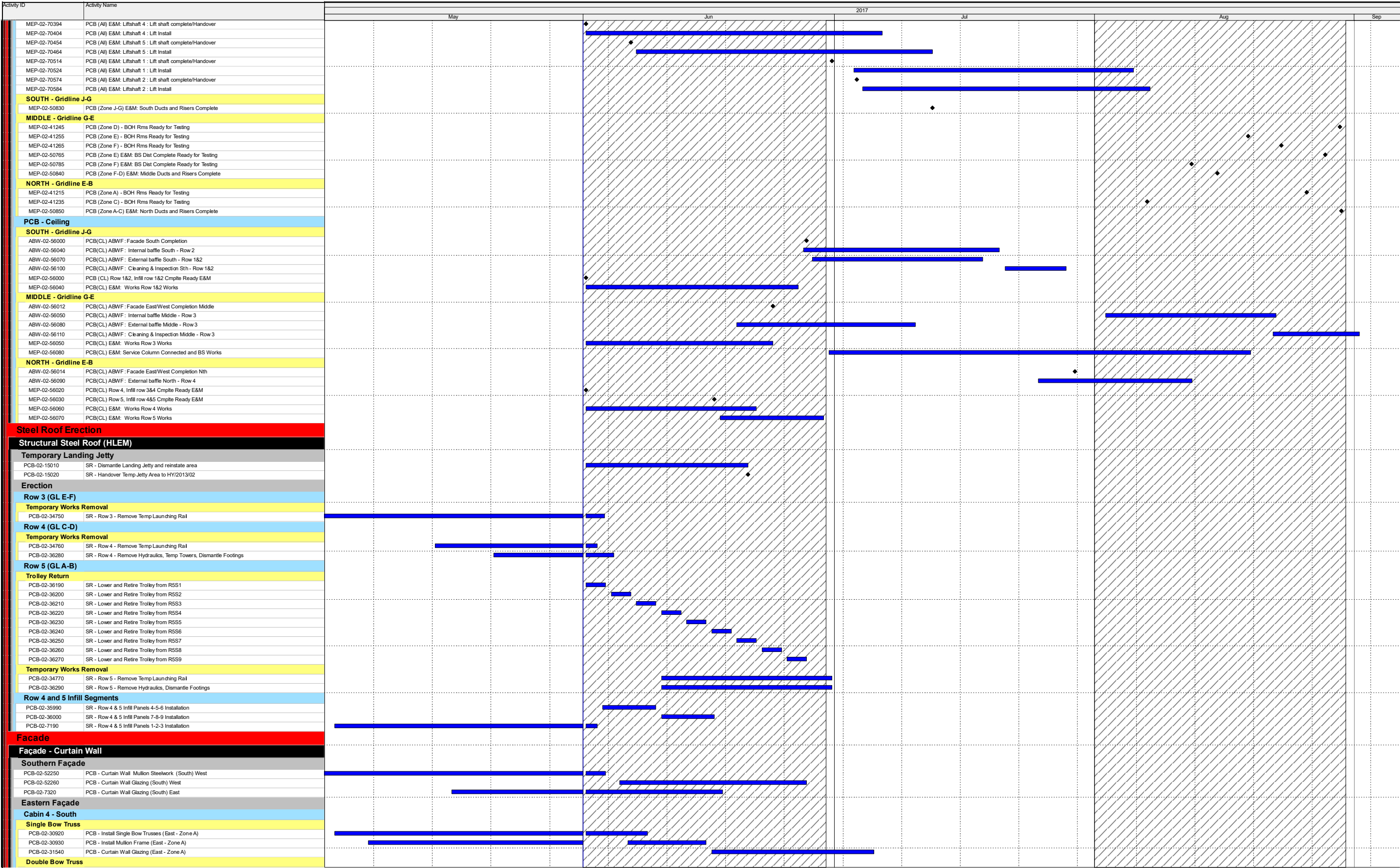


- Actual Work
- Remaining Work
- Critical Remaining Work
- ◆

◆ Milestone

Date	Revision	Checked	Approved

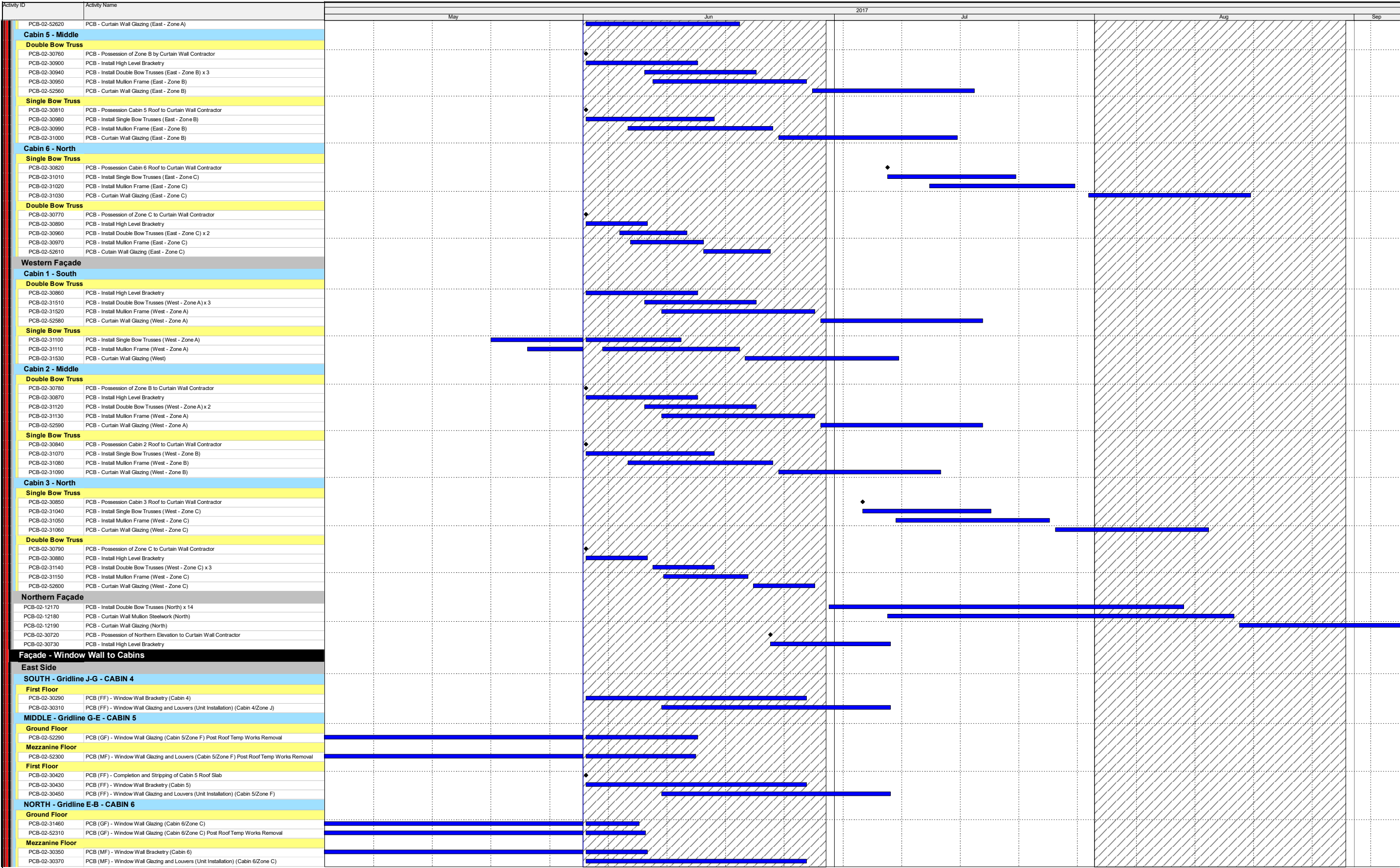




- Actual Work
- Remaining Work
- Critical Remaining Work
- ◆

◆ Milestone

Date	Revision	Checked	Approved



- Actual Work
- Remaining Work
- Critical Remaining Work
- ◆

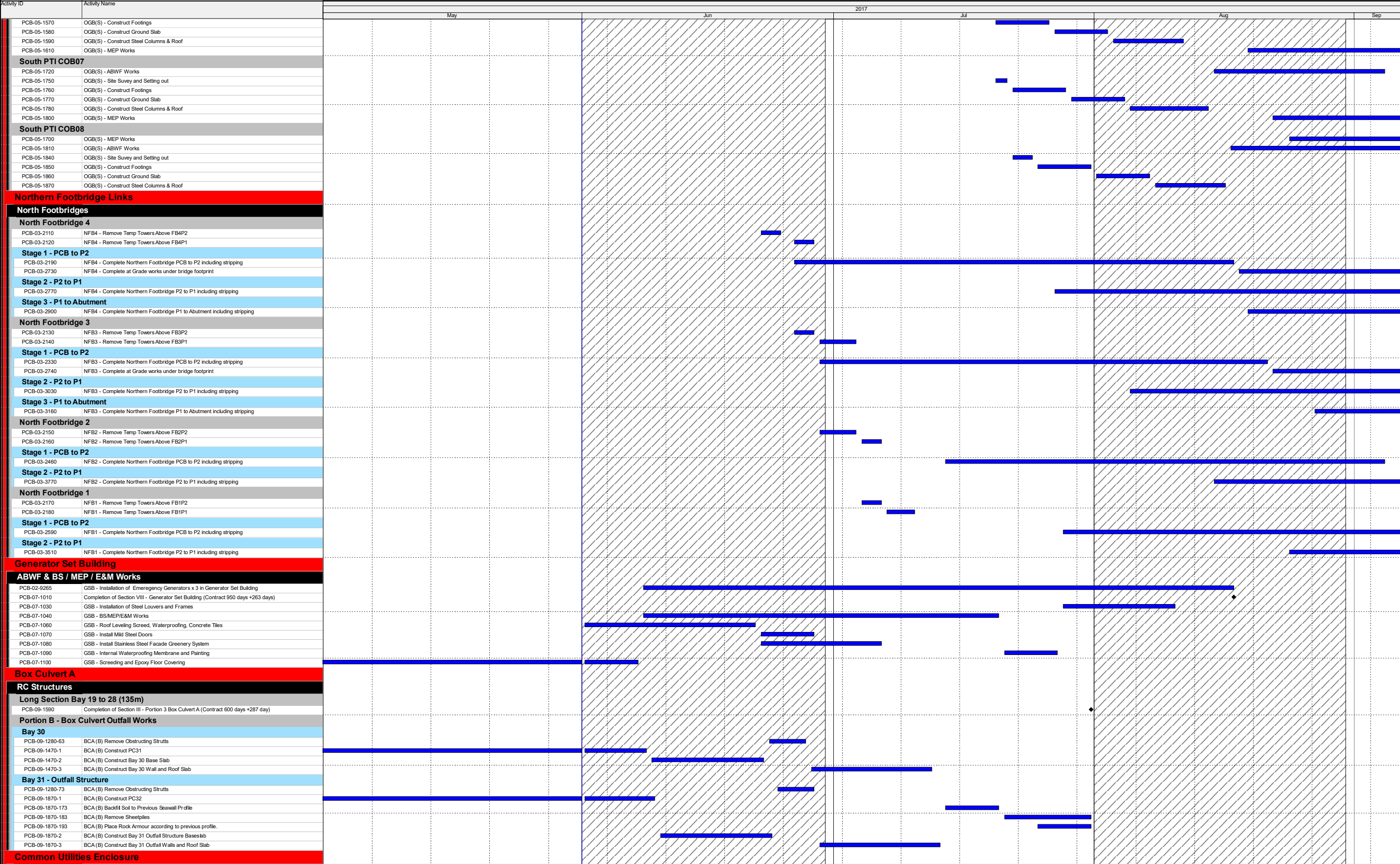
◆ Milestone

Date	Revision	Checked	Approved

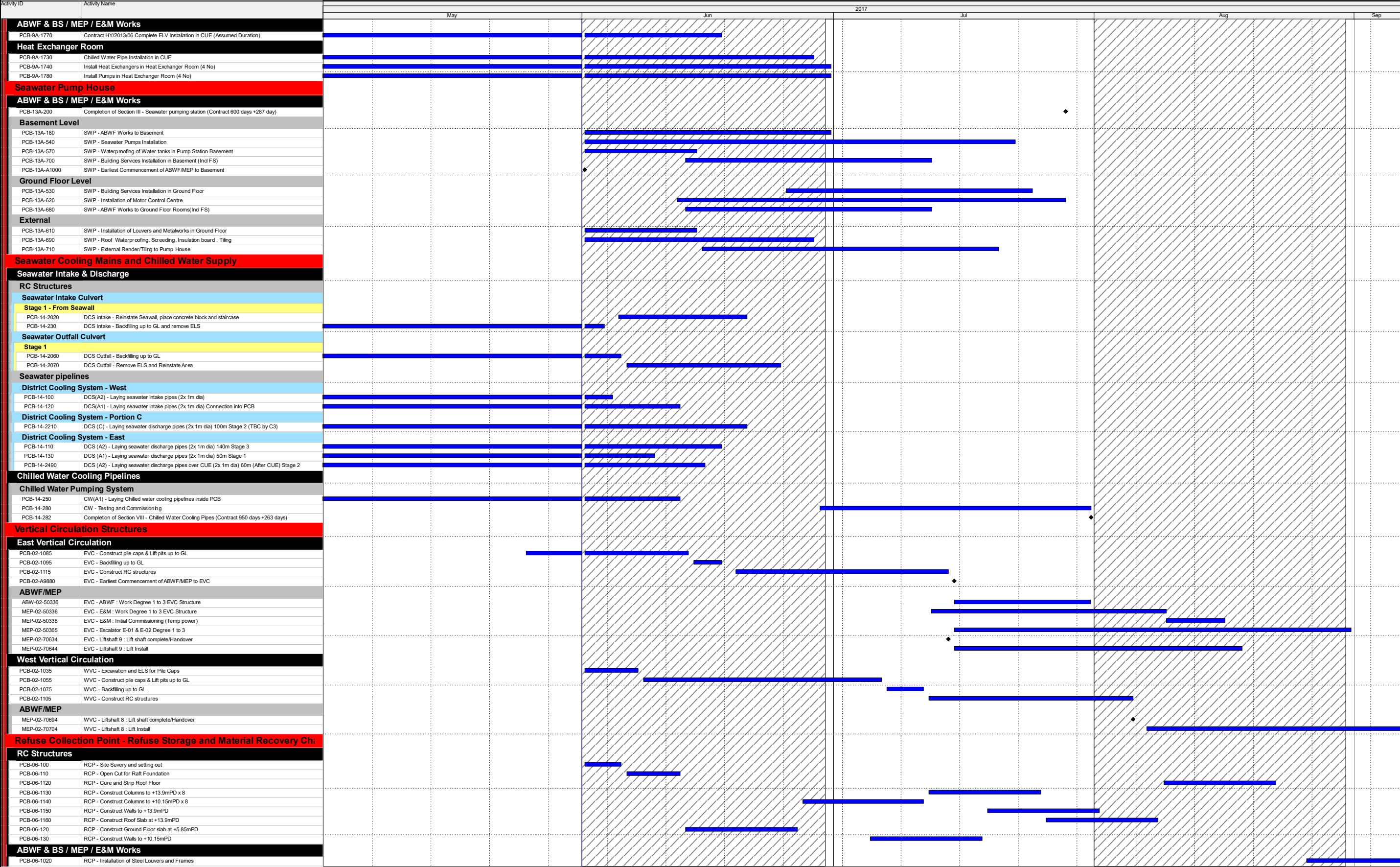
Activity ID	Activity Name	2017											
		May			Jun			Jul			Aug		
PCB-02-52320	PCB (MF) - Window Wall Glazing and Louvers (Cabin 6/Zone C) Post Roof Temp Works Removal												
First Floor													
PCB-02-30380	PCB (FF) - Completion and Stripping of Cabin 6 Roof Slab												
PCB-02-30390	PCB (FF) - Window Wall Bracketry (Cabin 6)												
PCB-02-30410	PCB (FF) - Window Wall Glazing and Louvers (Unit Installation) (Cabin 6/Zone C)												
West Side													
SOUTH - Gridline J-G - CABIN 1													
First Floor													
PCB-02-30070	PCB (FF) - Window Wall Bracketry (Cabin 1)												
PCB-02-30090	PCB (FF) - Window Wall Glazing and Louvers (Unit Installation) (Cabin 1/Zone G)												
MIDDLE - Gridline G-E - CABIN 2													
Ground Floor													
PCB-02-31410	PCB (GF) - Window Wall Glazing and Louvers (Unit Installation) (Cabin 2/Zone D)												
PCB-02-52350	PCB (GF) - Window Wall Glazing and Louvers (Cabin 2/Zone D) Post Roof Temp Works Remove												
First Floor													
PCB-02-30140	PCB (FF) - Completion and Stripping of Cabin 2 Roof Slab												
PCB-02-30150	PCB (FF) - Window Wall Bracketry (Cabin 2)												
PCB-02-30170	PCB (FF) - Window Wall Glazing and Louvers (Unit Installation) (Cabin 2/Zone D)												
NORTH - Gridline E-B - CABIN 3													
Ground Floor													
PCB-02-52370	PCB (GF) - Window Wall Glazing (Cabin 3/Zone A) Post Roof Temp Works Remove												
First Floor													
PCB-02-30210	PCB (FF) - Completion and Stripping of Cabin 3 Roof Slab												
PCB-02-30220	PCB (FF) - Window Wall Bracketry (Cabin 3)												
PCB-02-30240	PCB (FF) - Window Wall Glazing and Louvers (Unit Installation) (Cabin 3/Zone A)												
Solar Shading Louvre & Glass Cladding to Cabins													
East Elevation													
Solar Shades													
PCB-XX-0500	Install Solar Shades above Cabin 4												
PCB-XX-540	Install Solar Shades above Cabin 5												
PCB-XX-550	Install Solar Shades above Cabin 6												
External Steel Staircase													
PCB-XX-0520	Install Steel Cabin Staircase Cabin 4												
PCB-XX-670	Install Steel Cabin Staircase Cabin 5												
PCB-XX-680	Install Steel Cabin Staircase Cabin 6												
West Elevation													
External Steel Staircase													
PCB-XX-0510	Install Steel Cabin Staircase Cabin 1												
PCB-XX-650	Install Steel Cabin Staircase Cabin 2												
PCB-XX-660	Install Steel Cabin Staircase Cabin 3												
Solar Shades													
PCB-XX-0490	Install Solar Shades above Cabin 1												
PCB-XX-520	Install Solar Shades above Cabin 2												
PCB-XX-530	Install Solar Shades above Cabin 3												
Southern Drop-Off Area													
Southern Drop off Area - Deck Columns													
PCB-16-2070	DoA - Complete Southern Elevation Curtain Wall												
Southern Drop off Area - Decking													
PCB-16-520-28	DoA - JV Temporary Occupy Drop Off Deck for Office												
Road & Drainage Works													
PCB-16-2160	DOA - Road Markings and Signage (Under deck)												
PCB-16-550	DOA - Road and Drainage works (Upper deck)												
PCB-16-770	DOA - Cleaning and Snagging (Upper deck)												
PCB-16-890	DOA - Construct 5no Steel Covered Walkways (Upper deck)												
PCB-16-900	DOA - Parapets Steel Ballustrades (Upper deck)												
PCB-16-910	DOA - Road Markings and Signage (Upper deck)												
PCB-16-930	DOA - Kurbing and Pedestrian Walkways (Upper deck)												
Southern Footbridge Links													
South Footbridge 4													
PCB-16-2170	SFB4 - Complete Installation of remaining glazed sealed units in Southern Curtain Wall												
PCB-16-680	SFB4 - Stage 1 - Construct Stage 1 deck												
PCB-16-790	SFB4 - Stage 1 - Prestress the cables and grouting												
PCB-16-820	SFB4 - Stage 2 - Construct Stage 2 deck												
PCB-16-830	SFB4 - Stage 2 - Remove temp falseworks												
PCB-16-840	SFB4 - Erect glass balustrade and complete remaining works												
South Footbridge 3													
PCB-16-2180	SFB3 - Complete Installation of remaining glazed sealed units in Southern Curtain Wall												
PCB-16-690	SFB3 - Stage 1 - Construct Stage 1 deck												
PCB-16-740	SFB3 - Stage 1 - Prestress the cables and grouting												
PCB-16-780	SFB3 - Stage 2 - Construct Stage 2 deck												
PCB-16-800	SFB3 - Stage 2 - Remove temp falseworks												
South Footbridge 2													
PCB-16-650	SFB2 - Stage 1 - Construct Stage 1 deck												
PCB-16-700	SFB2 - Stage 1 - Prestress the cables and grouting												
South Footbridge 1													
PCB-16-2200	SFB1 - Complete Installation of remaining glazed sealed units in Southern Curtain Wall												
PCB-16-610	SFB1 - Stage 1 - Construct Stage 1 deck												
PCB-16-670	SFB1 - Stage 1 - Prestress the cables and grouting												
PCB-16-690	SFB1 - Stage 2 - Construct Stage 2 deck												
PCB-16-710	SFB1 - Stage 2 - Remove temp falseworks												
PCB-16-720	SFB1 - Erect glass balustrade and complete remaining works												
C&ED Observation Guard Booth													
Structures													
South PTI COB06													
PCB-05-1530	OCB(S) - ABWF Works												
PCB-05-1560	OCB(S) - Site Survey and Setting out												

- Actual Work
- Remaining Work
- Critical Remaining Work
- Milestone

Date	Revision	Checked	Approved







Actual Work

Remaining Work

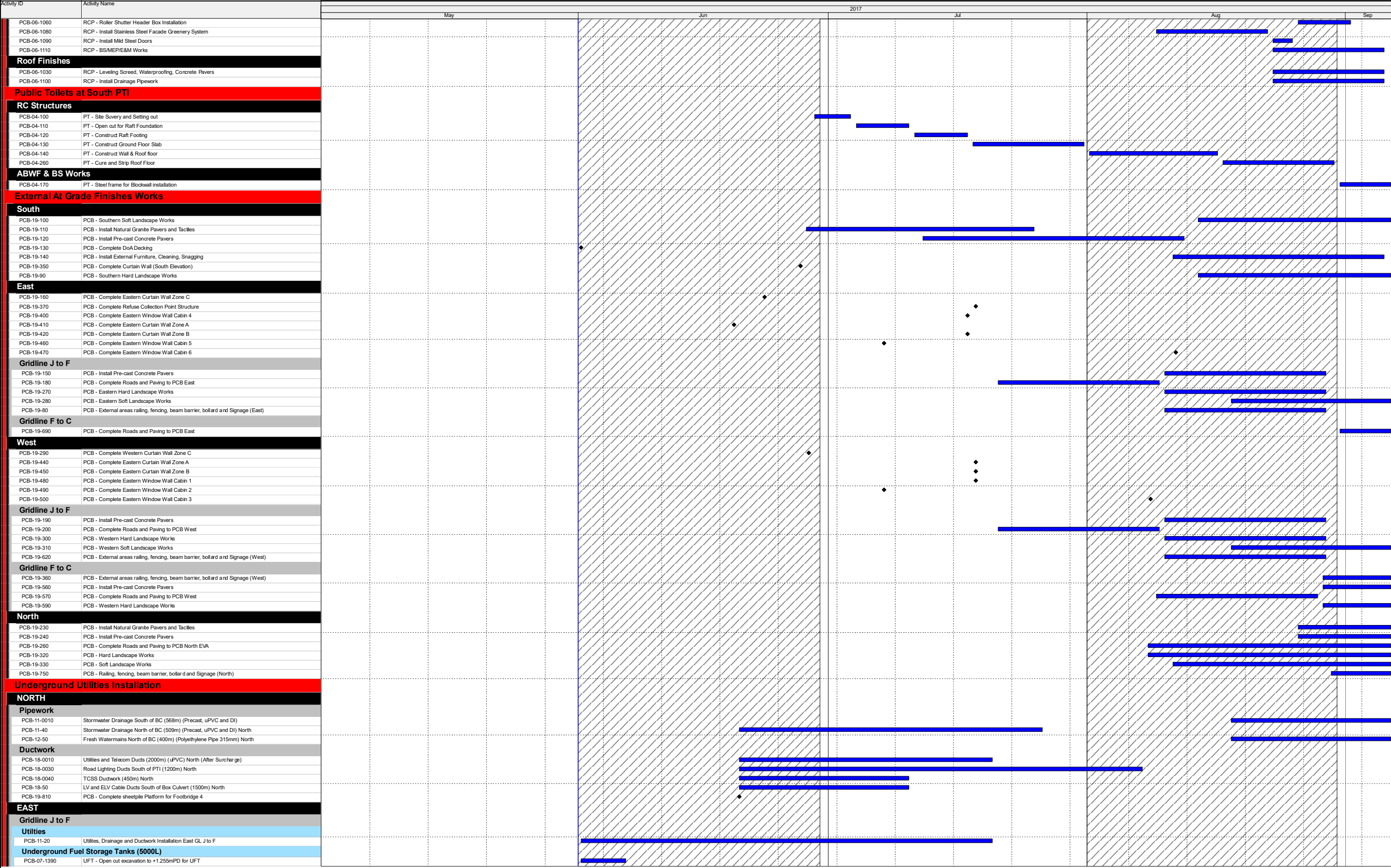
Critical Remaining Work

Milestone

Three Month Rolling Programme

HKMZB HKBCF - Passenger Clearance Building

Page 21 of 23



Actual Work

Remaining Work

Critical Remaining Work

◆

◆ Milestone

Three Month Rolling Programme

HKMZB HKBCF - Passenger Clearance Building

Page 22 of 23

Date	Revision	Checked	Approved

