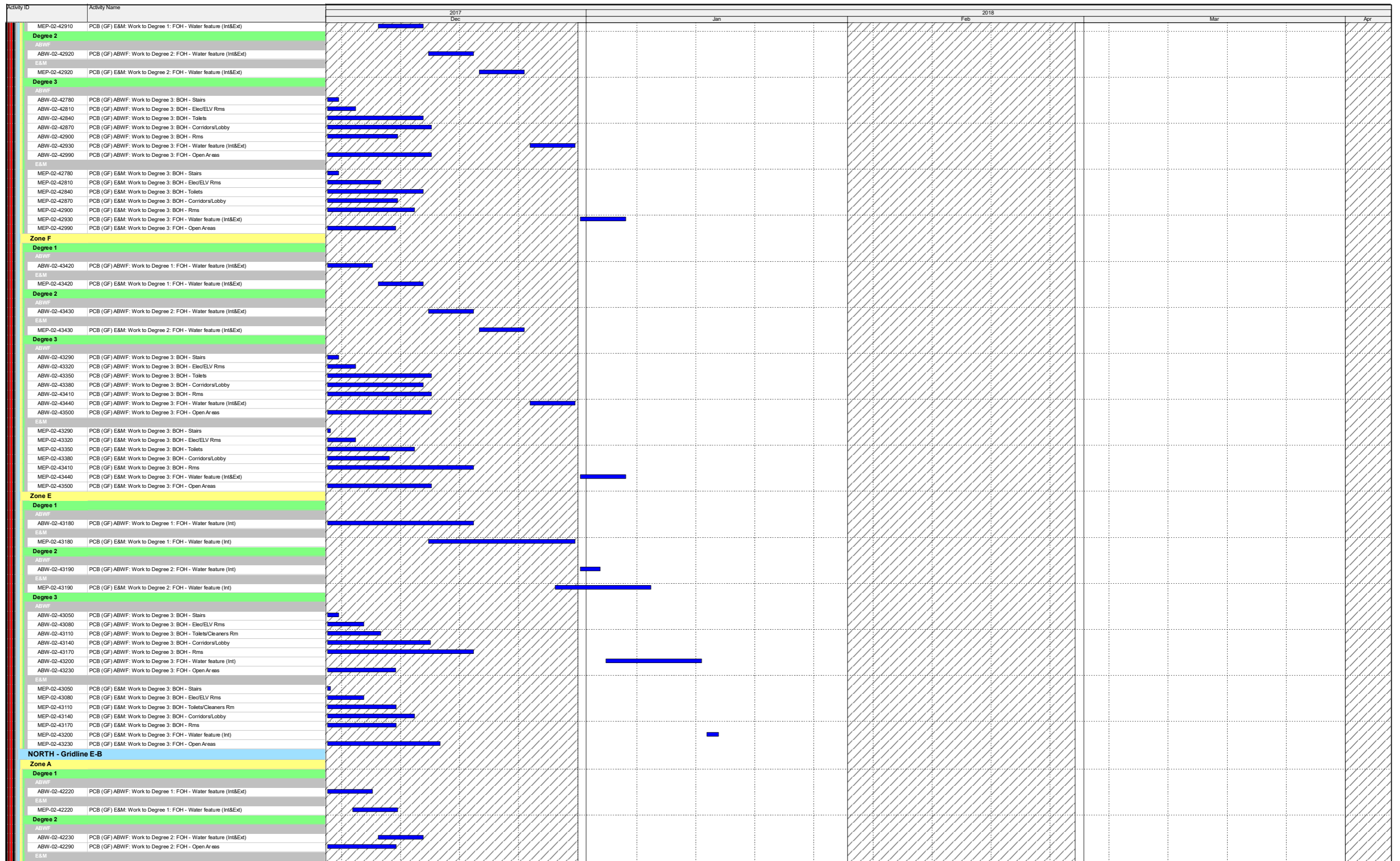


- Actual Work
- Remaining Work
- Critical Remaining Work
- Milestone

Three Month Rolling Programme
 HKMZB HKBCF - Passenger Clearance Building
 Page 1 of 12

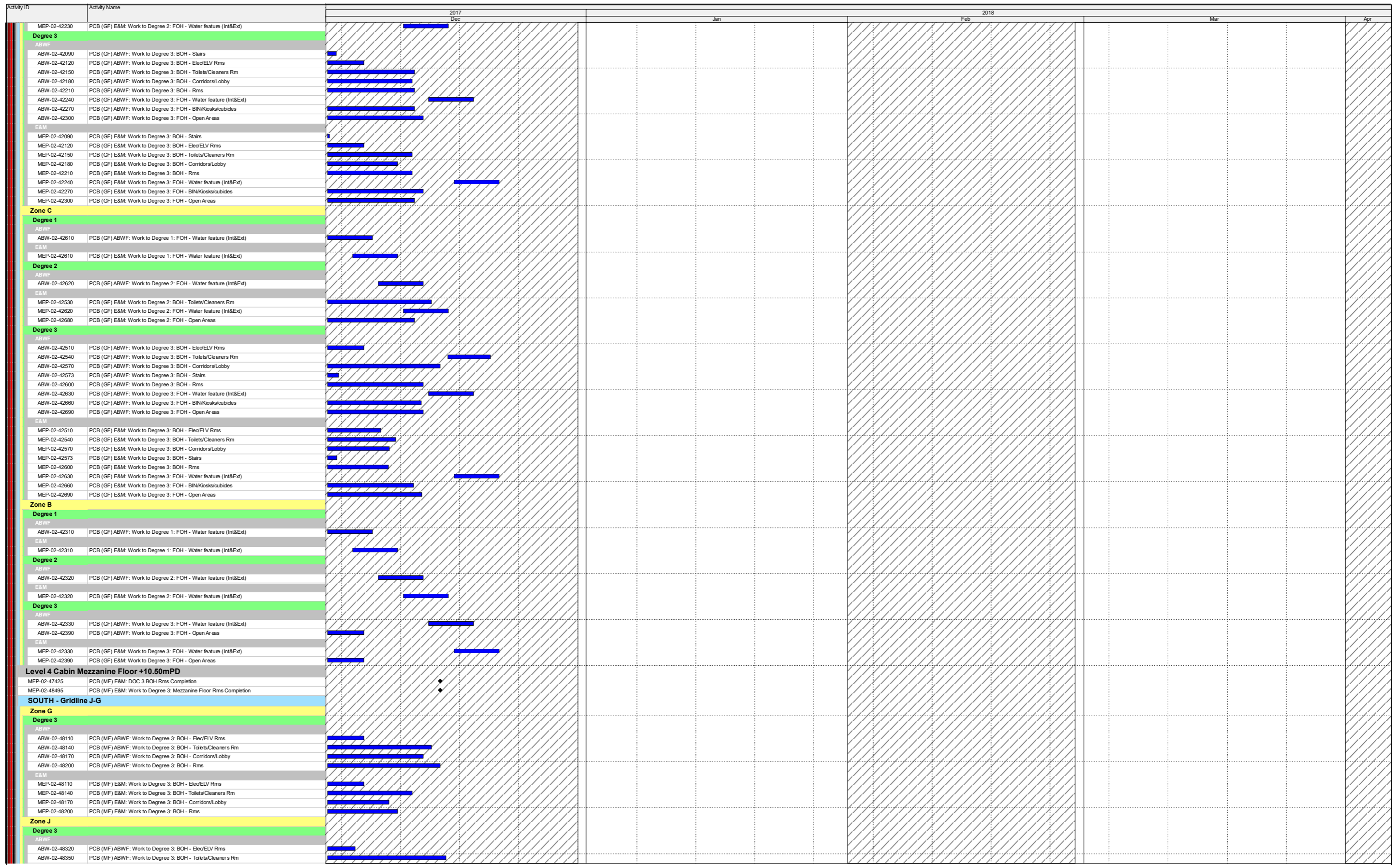
Date	Revision	Checked	Approved



- Actual Work
- Remaining Work
- Critical Remaining Work
- Milestone

Three Month Rolling Programme
 HKMZB HKBCF - Passenger Clearance Building
 Page 2 of 12

Date	Revision	Checked	Approved







- Actual Work
- Remaining Work
- Critical Remaining Work
- Milestone

Three Month Rolling Programme
 HKMZB HKBCF - Passenger Clearance Building
 Page 3 of 12

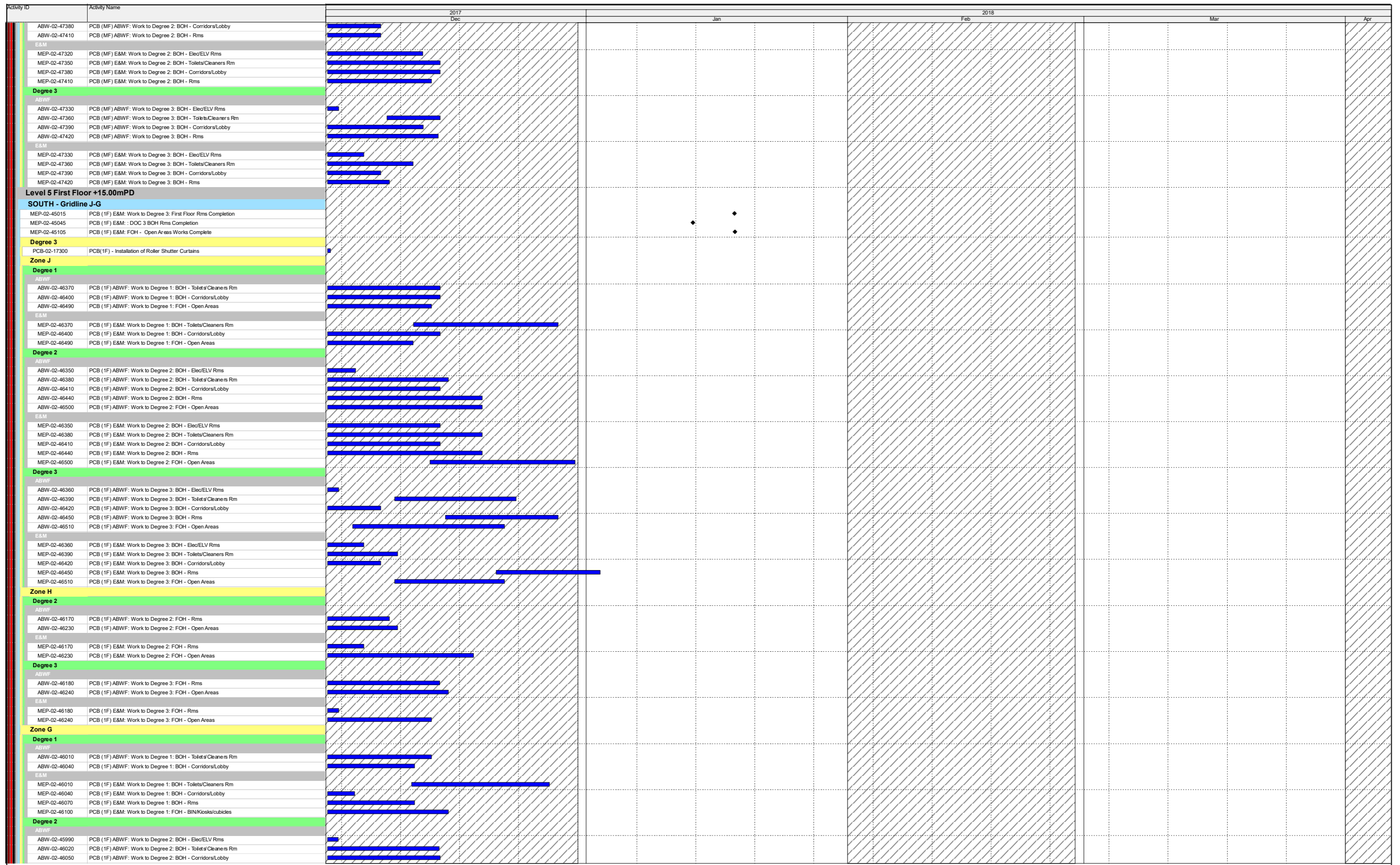
Date	Revision	Checked	Approved

Activity ID	Activity Name	2017				2018				
		Dec	Jan	Feb	Mar	Apr	May	Jun	Jul	
ABW-02-48380	PCB (MF) ABWF: Work to Degree 3: BOH - Corridors/Lobby	[Gantt bar: Dec 15 - Dec 25]								
ABW-02-48410	PCB (MF) ABWF: Work to Degree 3: BOH - Rms	[Gantt bar: Dec 15 - Dec 25]								
E&M										
MEP-02-48320	PCB (MF) E&M: Work to Degree 3: BOH - Elec/ELV Rms	[Gantt bar: Dec 15 - Dec 25]								
MEP-02-48350	PCB (MF) E&M: Work to Degree 3: BOH - Toilets/Cleaners Rm	[Gantt bar: Dec 15 - Dec 25]								
MEP-02-48380	PCB (MF) E&M: Work to Degree 3: BOH - Corridors/Lobby	[Gantt bar: Dec 15 - Dec 25]								
MEP-02-48410	PCB (MF) E&M: Work to Degree 3: BOH - Rms	[Gantt bar: Dec 15 - Dec 25]								
MIDDLE - Gridline G-E										
Zone F										
Degree 2										
ABWF										
ABW-02-47920	PCB (MF) ABWF: Work to Degree 2: BOH - Toilets/Cleaners Rm	[Gantt bar: Dec 15 - Dec 25]								
ABW-02-47950	PCB (MF) ABWF: Work to Degree 2: BOH - Corridors/Lobby	[Gantt bar: Dec 15 - Dec 25]								
ABW-02-47980	PCB (MF) ABWF: Work to Degree 2: BOH - Rms	[Gantt bar: Dec 15 - Dec 25]								
E&M										
MEP-02-47890	PCB (MF) E&M: Work to Degree 2: BOH - Elec/ELV Rms	[Gantt bar: Dec 15 - Dec 25]								
MEP-02-47920	PCB (MF) E&M: Work to Degree 2: BOH - Toilets/Cleaners Rm	[Gantt bar: Dec 15 - Dec 25]								
MEP-02-47980	PCB (MF) E&M: Work to Degree 2: BOH - Rms	[Gantt bar: Dec 15 - Dec 25]								
Degree 3										
ABWF										
ABW-02-47900	PCB (MF) ABWF: Work to Degree 3: BOH - Elec/ELV Rms	[Gantt bar: Dec 15 - Dec 25]								
ABW-02-47930	PCB (MF) ABWF: Work to Degree 3: BOH - Toilets/Cleaners Rm	[Gantt bar: Dec 15 - Dec 25]								
ABW-02-47960	PCB (MF) ABWF: Work to Degree 3: BOH - Corridors/Lobby	[Gantt bar: Dec 15 - Dec 25]								
ABW-02-47990	PCB (MF) ABWF: Work to Degree 3: BOH - Rms	[Gantt bar: Dec 15 - Dec 25]								
E&M										
MEP-02-47900	PCB (MF) E&M: Work to Degree 3: BOH - Elec/ELV Rms	[Gantt bar: Dec 15 - Dec 25]								
MEP-02-47930	PCB (MF) E&M: Work to Degree 3: BOH - Toilets/Cleaners Rm	[Gantt bar: Dec 15 - Dec 25]								
MEP-02-47960	PCB (MF) E&M: Work to Degree 3: BOH - Corridors/Lobby	[Gantt bar: Dec 15 - Dec 25]								
MEP-02-47990	PCB (MF) E&M: Work to Degree 3: BOH - Rms	[Gantt bar: Dec 15 - Dec 25]								
Zone D										
Degree 3										
ABWF										
ABW-02-47540	PCB (MF) ABWF: Work to Degree 3: BOH - Elec/ELV Rms	[Gantt bar: Dec 15 - Dec 25]								
ABW-02-47570	PCB (MF) ABWF: Work to Degree 3: BOH - Toilets/Changing Rm	[Gantt bar: Dec 15 - Dec 25]								
ABW-02-47600	PCB (MF) ABWF: Work to Degree 3: BOH - Corridors/Lobby	[Gantt bar: Dec 15 - Dec 25]								
ABW-02-47630	PCB (MF) ABWF: Work to Degree 3: BOH - Rms	[Gantt bar: Dec 15 - Dec 25]								
E&M										
MEP-02-47540	PCB (MF) E&M: Work to Degree 3: BOH - Elec/ELV Rms	[Gantt bar: Dec 15 - Dec 25]								
MEP-02-47570	PCB (MF) E&M: Work to Degree 3: BOH - Toilets/Changing Rm	[Gantt bar: Dec 15 - Dec 25]								
MEP-02-47600	PCB (MF) E&M: Work to Degree 3: BOH - Corridors/Lobby	[Gantt bar: Dec 15 - Dec 25]								
MEP-02-47630	PCB (MF) E&M: Work to Degree 3: BOH - Rms	[Gantt bar: Dec 15 - Dec 25]								
Zone E										
Degree 2										
ABWF										
ABW-02-47740	PCB (MF) ABWF: Work to Degree 2: BOH - Toilets/Cleaners Rm	[Gantt bar: Dec 15 - Dec 25]								
ABW-02-47770	PCB (MF) ABWF: Work to Degree 2: BOH - Corridors/Lobby	[Gantt bar: Dec 15 - Dec 25]								
ABW-02-47800	PCB (MF) ABWF: Work to Degree 2: BOH - Rms	[Gantt bar: Dec 15 - Dec 25]								
E&M										
MEP-02-47710	PCB (MF) E&M: Work to Degree 2: BOH - Elec/ELV Rms	[Gantt bar: Dec 15 - Dec 25]								
MEP-02-47740	PCB (MF) E&M: Work to Degree 2: BOH - Toilets/Cleaners Rm	[Gantt bar: Dec 15 - Dec 25]								
MEP-02-47770	PCB (MF) E&M: Work to Degree 2: BOH - Corridors/Lobby	[Gantt bar: Dec 15 - Dec 25]								
MEP-02-47800	PCB (MF) E&M: Work to Degree 2: BOH - Rms	[Gantt bar: Dec 15 - Dec 25]								
Degree 3										
ABWF										
ABW-02-47720	PCB (MF) ABWF: Work to Degree 3: BOH - Elec/ELV Rms	[Gantt bar: Dec 15 - Dec 25]								
ABW-02-47750	PCB (MF) ABWF: Work to Degree 3: BOH - Toilets/Cleaners Rm	[Gantt bar: Dec 15 - Dec 25]								
ABW-02-47780	PCB (MF) ABWF: Work to Degree 3: BOH - Corridors/Lobby	[Gantt bar: Dec 15 - Dec 25]								
ABW-02-47810	PCB (MF) ABWF: Work to Degree 3: BOH - Rms	[Gantt bar: Dec 15 - Dec 25]								
E&M										
MEP-02-47720	PCB (MF) E&M: Work to Degree 3: BOH - Elec/ELV Rms	[Gantt bar: Dec 15 - Dec 25]								
MEP-02-47750	PCB (MF) E&M: Work to Degree 3: BOH - Toilets/Cleaners Rm	[Gantt bar: Dec 15 - Dec 25]								
MEP-02-47780	PCB (MF) E&M: Work to Degree 3: BOH - Corridors/Lobby	[Gantt bar: Dec 15 - Dec 25]								
MEP-02-47810	PCB (MF) E&M: Work to Degree 3: BOH - Rms	[Gantt bar: Dec 15 - Dec 25]								
NORTH - Gridline E-B										
Zone A										
Degree 2										
ABWF										
ABW-02-47110	PCB (MF) ABWF: Work to Degree 2: BOH - Elec/ELV Rms	[Gantt bar: Dec 15 - Dec 25]								
ABW-02-47140	PCB (MF) ABWF: Work to Degree 2: BOH - Toilets	[Gantt bar: Dec 15 - Dec 25]								
ABW-02-47200	PCB (MF) ABWF: Work to Degree 2: BOH - Rms	[Gantt bar: Dec 15 - Dec 25]								
E&M										
MEP-02-47110	PCB (MF) E&M: Work to Degree 2: BOH - Elec/ELV Rms	[Gantt bar: Dec 15 - Dec 25]								
MEP-02-47140	PCB (MF) E&M: Work to Degree 2: BOH - Toilets	[Gantt bar: Dec 15 - Dec 25]								
MEP-02-47170	PCB (MF) E&M: Work to Degree 2: BOH - Corridors/Lobby	[Gantt bar: Dec 15 - Dec 25]								
MEP-02-47200	PCB (MF) E&M: Work to Degree 2: BOH - Rms	[Gantt bar: Dec 15 - Dec 25]								
Degree 3										
ABWF										
ABW-02-47120	PCB (MF) ABWF: Work to Degree 3: BOH - Elec/ELV Rms	[Gantt bar: Dec 15 - Dec 25]								
ABW-02-47150	PCB (MF) ABWF: Work to Degree 3: BOH - Toilets	[Gantt bar: Dec 15 - Dec 25]								
ABW-02-47180	PCB (MF) ABWF: Work to Degree 3: BOH - Corridors/Lobby	[Gantt bar: Dec 15 - Dec 25]								
ABW-02-47210	PCB (MF) ABWF: Work to Degree 3: BOH - Rms	[Gantt bar: Dec 15 - Dec 25]								
E&M										
MEP-02-47120	PCB (MF) E&M: Work to Degree 3: BOH - Elec/ELV Rms	[Gantt bar: Dec 15 - Dec 25]								
MEP-02-47150	PCB (MF) E&M: Work to Degree 3: BOH - Toilets	[Gantt bar: Dec 15 - Dec 25]								
MEP-02-47180	PCB (MF) E&M: Work to Degree 3: BOH - Corridors/Lobby	[Gantt bar: Dec 15 - Dec 25]								
MEP-02-47210	PCB (MF) E&M: Work to Degree 3: BOH - Rms	[Gantt bar: Dec 15 - Dec 25]								
Zone C										
Degree 2										
ABWF										
ABW-02-47320	PCB (MF) ABWF: Work to Degree 2: BOH - Elec/ELV Rms	[Gantt bar: Dec 15 - Dec 25]								
ABW-02-47350	PCB (MF) ABWF: Work to Degree 2: BOH - Toilets/Cleaners Rm	[Gantt bar: Dec 15 - Dec 25]								

-  Actual Work
-  Remaining Work
-  Critical Remaining Work
-  Milestone

Three Month Rolling Programme
 HKMZB HKBCF - Passenger Clearance Building
 Page 4 of 12

Date	Revision	Checked	Approved



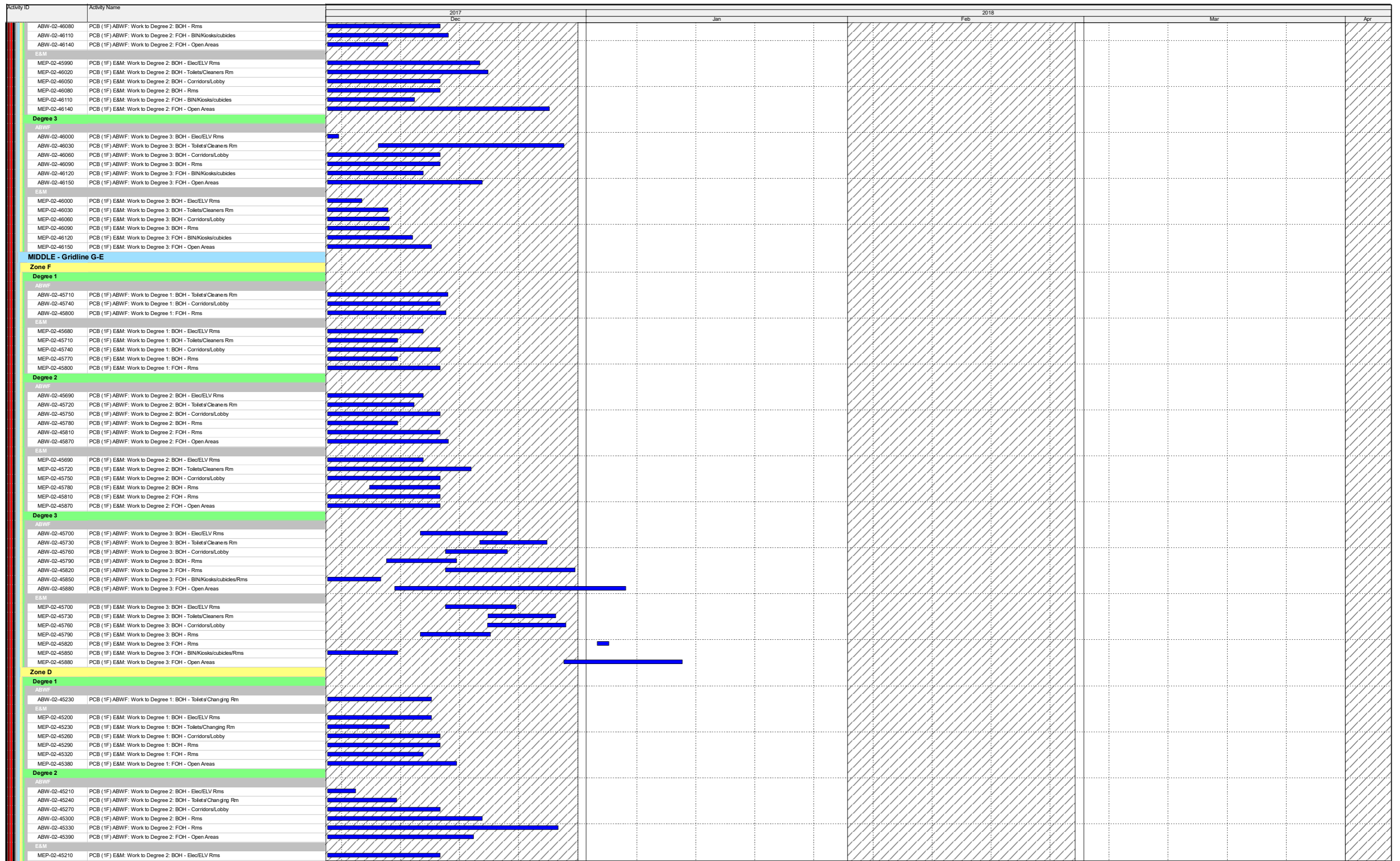
- Actual Work
- Remaining Work
- Critical Remaining Work
- Milestone

Three Month Rolling Programme

HKMZB HKBCF - Passenger Clearance Building

Page 5 of 12

Date	Revision	Checked	Approved



- Actual Work
- Remaining Work
- Critical Remaining Work
- Milestone

Three Month Rolling Programme
 HKMZB HKBCF - Passenger Clearance Building
 Page 6 of 12

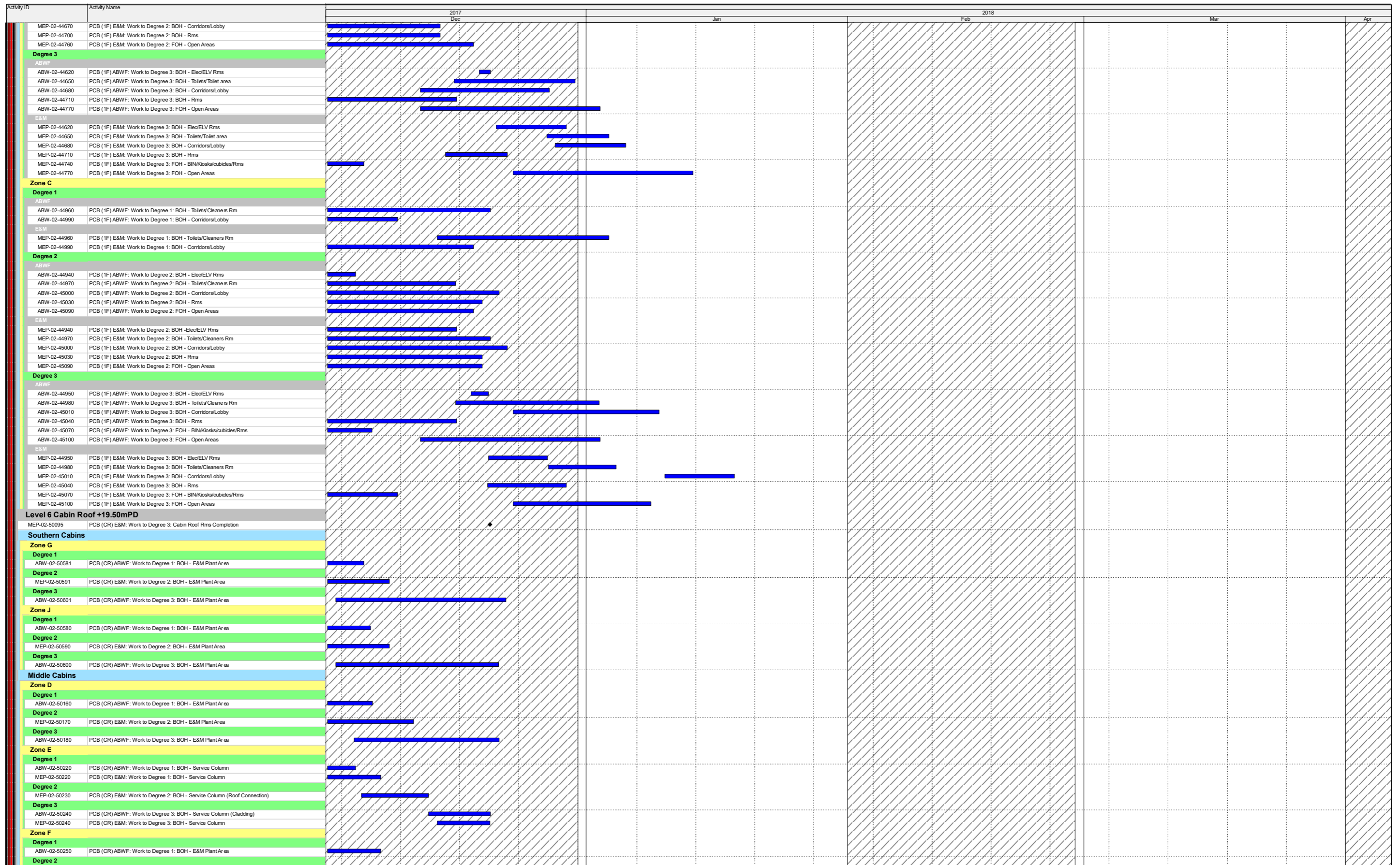
Date	Revision	Checked	Approved

Activity ID	Activity Name	2017				2018			
		Dec	Jan	Feb	Mar	Apr	May	Jun	Jul
MEP-02-45240	PCB (1F) E&M: Work to Degree 2: BOH - Toilets/Changing Rm	[Gantt bar: Dec 15 - Dec 25]							
MEP-02-45270	PCB (1F) E&M: Work to Degree 2: BOH - Corridors/Lobby	[Gantt bar: Dec 15 - Dec 25]							
MEP-02-45300	PCB (1F) E&M: Work to Degree 2: BOH - Rms	[Gantt bar: Dec 15 - Dec 25]							
MEP-02-45330	PCB (1F) E&M: Work to Degree 2: FOH - Rms	[Gantt bar: Dec 15 - Dec 25]							
MEP-02-45390	PCB (1F) E&M: Work to Degree 2: FOH - Open Areas	[Gantt bar: Dec 15 - Dec 25]							
Degree 3									
ABWF									
ABW-02-45220	PCB (1F) ABWF: Work to Degree 3: BOH - Elec/ELV Rms	[Gantt bar: Dec 20 - Dec 25]							
ABW-02-45250	PCB (1F) ABWF: Work to Degree 3: BOH - Toilets/Changing Rm	[Gantt bar: Dec 20 - Dec 25]							
ABW-02-45280	PCB (1F) ABWF: Work to Degree 3: BOH - Corridors/Lobby	[Gantt bar: Dec 20 - Dec 25]							
ABW-02-45310	PCB (1F) ABWF: Work to Degree 3: BOH - Rms	[Gantt bar: Dec 20 - Dec 25]							
ABW-02-45340	PCB (1F) ABWF: Work to Degree 3: FOH - Rms	[Gantt bar: Dec 20 - Dec 25]							
ABW-02-45400	PCB (1F) ABWF: Work to Degree 3: FOH - Open Areas	[Gantt bar: Dec 20 - Dec 25]							
E&M									
MEP-02-45220	PCB (1F) E&M: Work to Degree 3: BOH - Elec/ELV Rms	[Gantt bar: Dec 20 - Dec 25]							
MEP-02-45250	PCB (1F) E&M: Work to Degree 3: BOH - Toilets/Changing Rm	[Gantt bar: Dec 20 - Dec 25]							
MEP-02-45280	PCB (1F) E&M: Work to Degree 3: BOH - Corridors/Lobby	[Gantt bar: Dec 20 - Dec 25]							
MEP-02-45310	PCB (1F) E&M: Work to Degree 3: BOH - Rms	[Gantt bar: Dec 20 - Dec 25]							
MEP-02-45340	PCB (1F) E&M: Work to Degree 3: FOH - Rms	[Gantt bar: Dec 20 - Dec 25]							
MEP-02-45370	PCB (1F) E&M: Work to Degree 3: FOH - BIN/Kiosks/cubicles/Rms	[Gantt bar: Dec 20 - Dec 25]							
MEP-02-45400	PCB (1F) E&M: Work to Degree 3: FOH - Open Areas	[Gantt bar: Dec 20 - Dec 25]							
Zone E									
Degree 1									
ABWF									
ABW-02-45500	PCB (1F) ABWF: Work to Degree 1: BOH - Toilets/Cleaners Rm	[Gantt bar: Dec 20 - Dec 25]							
ABW-02-45530	PCB (1F) ABWF: Work to Degree 1: BOH - Corridors/Lobby	[Gantt bar: Dec 20 - Dec 25]							
E&M									
MEP-02-45470	PCB (1F) E&M: Work to Degree 1: BOH - Elec/ELV Rms	[Gantt bar: Dec 20 - Dec 25]							
MEP-02-45500	PCB (1F) E&M: Work to Degree 1: BOH - Toilets/Cleaners Rm	[Gantt bar: Dec 20 - Dec 25]							
MEP-02-45530	PCB (1F) E&M: Work to Degree 1: BOH - Corridors/Lobby	[Gantt bar: Dec 20 - Dec 25]							
MEP-02-45560	PCB (1F) E&M: Work to Degree 1: BOH - Rms	[Gantt bar: Dec 20 - Dec 25]							
Degree 2									
ABWF									
ABW-02-45480	PCB (1F) ABWF: Work to Degree 2: BOH - Elec/ELV Rms	[Gantt bar: Dec 20 - Dec 25]							
ABW-02-45510	PCB (1F) ABWF: Work to Degree 2: BOH - Toilets/Cleaners Rm	[Gantt bar: Dec 20 - Dec 25]							
ABW-02-45540	PCB (1F) ABWF: Work to Degree 2: BOH - Corridors/Lobby	[Gantt bar: Dec 20 - Dec 25]							
ABW-02-45570	PCB (1F) ABWF: Work to Degree 2: BOH - Rms	[Gantt bar: Dec 20 - Dec 25]							
ABW-02-45600	PCB (1F) ABWF: Work to Degree 2: FOH - Open Areas	[Gantt bar: Dec 20 - Dec 25]							
E&M									
MEP-02-45480	PCB (1F) E&M: Work to Degree 2: BOH - Elec/ELV Rms	[Gantt bar: Dec 20 - Dec 25]							
MEP-02-45510	PCB (1F) E&M: Work to Degree 2: BOH - Toilets/Cleaners Rm	[Gantt bar: Dec 20 - Dec 25]							
MEP-02-45540	PCB (1F) E&M: Work to Degree 2: BOH - Corridors/Lobby	[Gantt bar: Dec 20 - Dec 25]							
MEP-02-45570	PCB (1F) E&M: Work to Degree 2: BOH - Rms	[Gantt bar: Dec 20 - Dec 25]							
MEP-02-45600	PCB (1F) E&M: Work to Degree 2: FOH - Open Areas	[Gantt bar: Dec 20 - Dec 25]							
Degree 3									
ABWF									
ABW-02-45490	PCB (1F) ABWF: Work to Degree 3: BOH - Elec/ELV Rms	[Gantt bar: Dec 20 - Dec 25]							
ABW-02-45520	PCB (1F) ABWF: Work to Degree 3: BOH - Toilets/Cleaners Rm	[Gantt bar: Dec 20 - Dec 25]							
ABW-02-45550	PCB (1F) ABWF: Work to Degree 3: BOH - Corridors/Lobby	[Gantt bar: Dec 20 - Dec 25]							
ABW-02-45580	PCB (1F) ABWF: Work to Degree 3: BOH - Rms	[Gantt bar: Dec 20 - Dec 25]							
ABW-02-45610	PCB (1F) ABWF: Work to Degree 3: FOH - Open Areas	[Gantt bar: Dec 20 - Dec 25]							
E&M									
MEP-02-45490	PCB (1F) E&M: Work to Degree 3: BOH - Elec/ELV Rms	[Gantt bar: Dec 20 - Dec 25]							
MEP-02-45520	PCB (1F) E&M: Work to Degree 3: BOH - Toilets/Cleaners Rm	[Gantt bar: Dec 20 - Dec 25]							
MEP-02-45550	PCB (1F) E&M: Work to Degree 3: BOH - Corridors/Lobby	[Gantt bar: Dec 20 - Dec 25]							
MEP-02-45580	PCB (1F) E&M: Work to Degree 3: BOH - Rms	[Gantt bar: Dec 20 - Dec 25]							
MEP-02-45610	PCB (1F) E&M: Work to Degree 3: FOH - Open Areas	[Gantt bar: Dec 20 - Dec 25]							
Degree 3									
PCB-02-17710	PCB(1F) - Installation of Roller Shutter Curtains	[Gantt bar: Dec 15 - Dec 25]							
NORTH - Gridline E-B									
Degree 3									
PCB-02-18030	PCB(1F) - Installation of Roller Shutter Curtains	[Gantt bar: Dec 15 - Dec 25]							
Zone B									
Degree 2									
ABWF									
ABW-02-44820	PCB (1F) ABWF: Work to Degree 2: FOH - Open Areas	[Gantt bar: Dec 20 - Dec 25]							
E&M									
MEP-02-44820	PCB (1F) E&M: Work to Degree 2: FOH - Open Areas	[Gantt bar: Dec 20 - Dec 25]							
Degree 3									
ABWF									
ABW-02-44830	PCB (1F) ABWF: Work to Degree 3: FOH - Open Areas	[Gantt bar: Dec 20 - Dec 25]							
E&M									
MEP-02-44800	PCB (1F) E&M: Work to Degree 3: FOH - BIN/Kiosks/cubicles/Rms	[Gantt bar: Dec 20 - Dec 25]							
MEP-02-44830	PCB (1F) E&M: Work to Degree 3: FOH - Open Areas	[Gantt bar: Dec 20 - Dec 25]							
Zone A									
Degree 1									
ABWF									
ABW-02-44630	PCB (1F) ABWF: Work to Degree 1: BOH - Toilets/Cleaners Rm	[Gantt bar: Dec 20 - Dec 25]							
ABW-02-44660	PCB (1F) ABWF: Work to Degree 1: BOH - Corridors/Lobby	[Gantt bar: Dec 20 - Dec 25]							
E&M									
MEP-02-44630	PCB (1F) E&M: Work to Degree 1: BOH - Toilets/Toilet area	[Gantt bar: Dec 20 - Dec 25]							
MEP-02-44660	PCB (1F) E&M: Work to Degree 1: BOH - Corridors/Lobby	[Gantt bar: Dec 20 - Dec 25]							
Degree 2									
ABWF									
ABW-02-44640	PCB (1F) ABWF: Work to Degree 2: BOH - Toilets/Toilet area	[Gantt bar: Dec 20 - Dec 25]							
ABW-02-44670	PCB (1F) ABWF: Work to Degree 2: BOH - Corridors/Lobby	[Gantt bar: Dec 20 - Dec 25]							
ABW-02-44700	PCB (1F) ABWF: Work to Degree 2: BOH - Rms	[Gantt bar: Dec 20 - Dec 25]							
ABW-02-44760	PCB (1F) ABWF: Work to Degree 2: FOH - Open Areas	[Gantt bar: Dec 20 - Dec 25]							
E&M									
MEP-02-44610	PCB (1F) E&M: Work to Degree 2: BOH - Elec/ELV Rms	[Gantt bar: Dec 20 - Dec 25]							
MEP-02-44640	PCB (1F) E&M: Work to Degree 2: BOH - Toilets/Toilet area	[Gantt bar: Dec 20 - Dec 25]							

- Actual Work
- Remaining Work
- Critical Remaining Work
- Milestone

Three Month Rolling Programme
 HKMZB HKBCF - Passenger Clearance Building
 Page 7 of 12

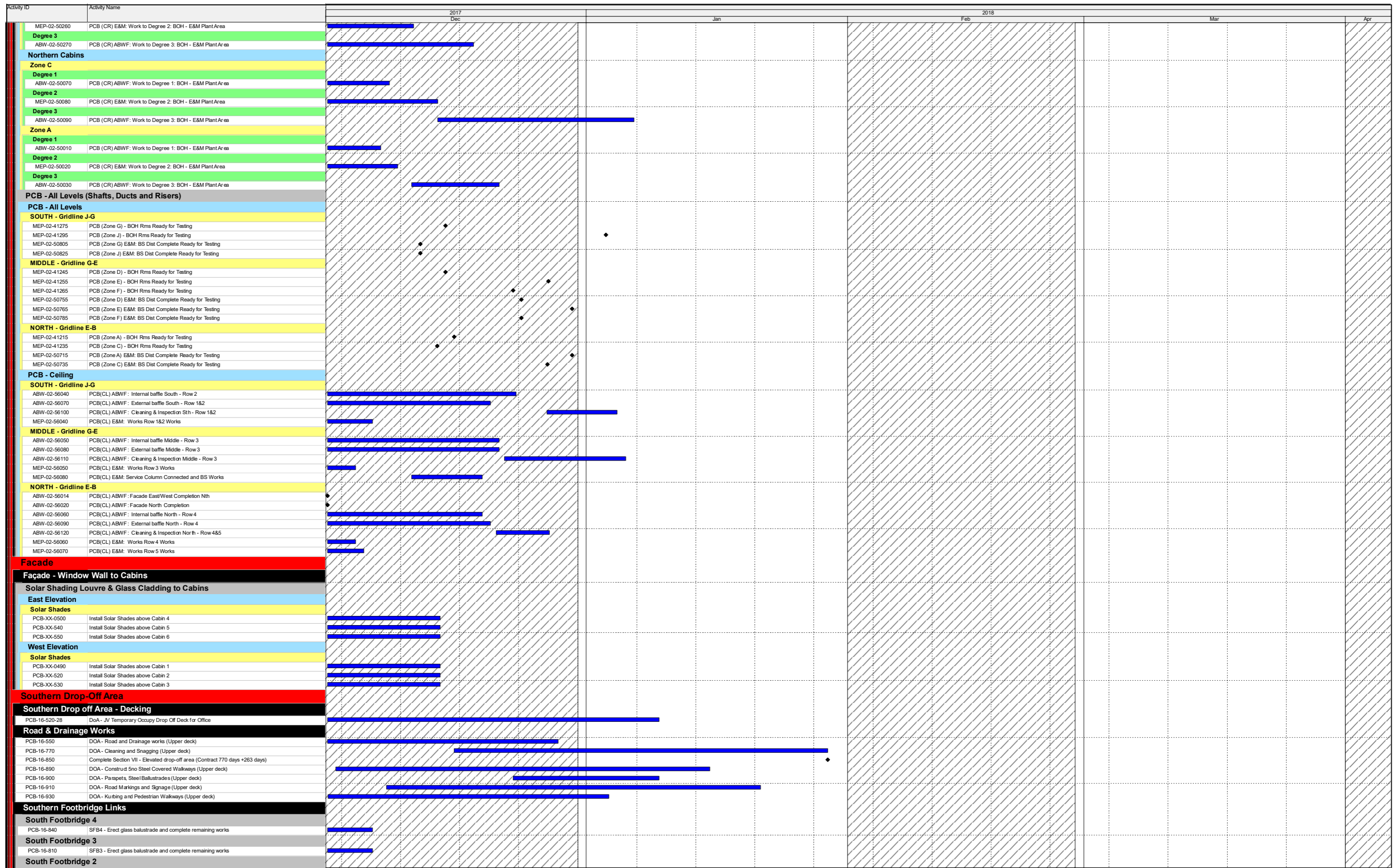
Date	Revision	Checked	Approved



Three Month Rolling Programme

HKMZB HKBCF - Passenger Clearance Building
Page 8 of 12

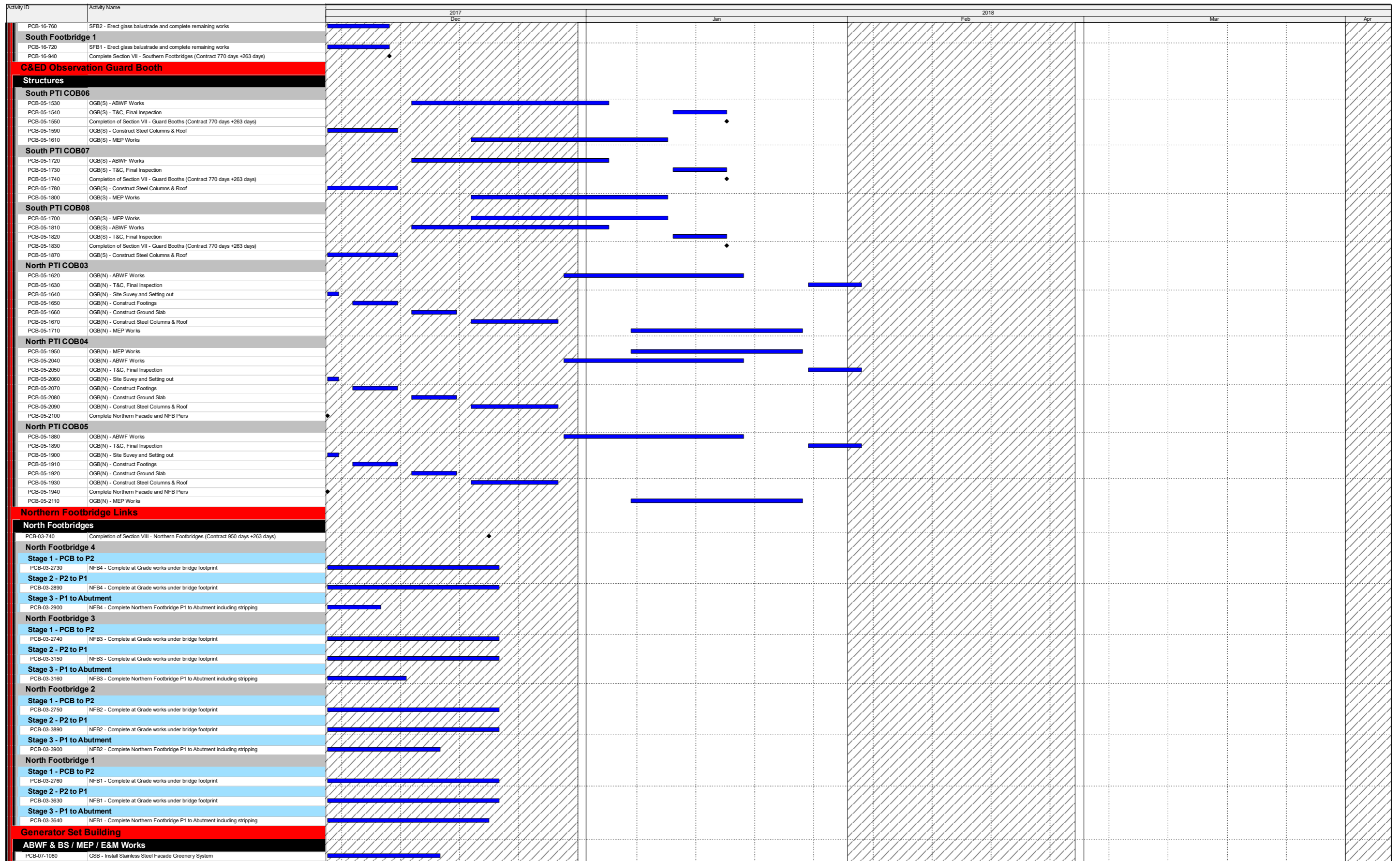
Date	Revision	Checked	Approved



Three Month Rolling Programme
 HKMZB HKBCF - Passenger Clearance Building
 Page 9 of 12

- Actual Work
- Remaining Work
- Critical Remaining Work
- Milestone

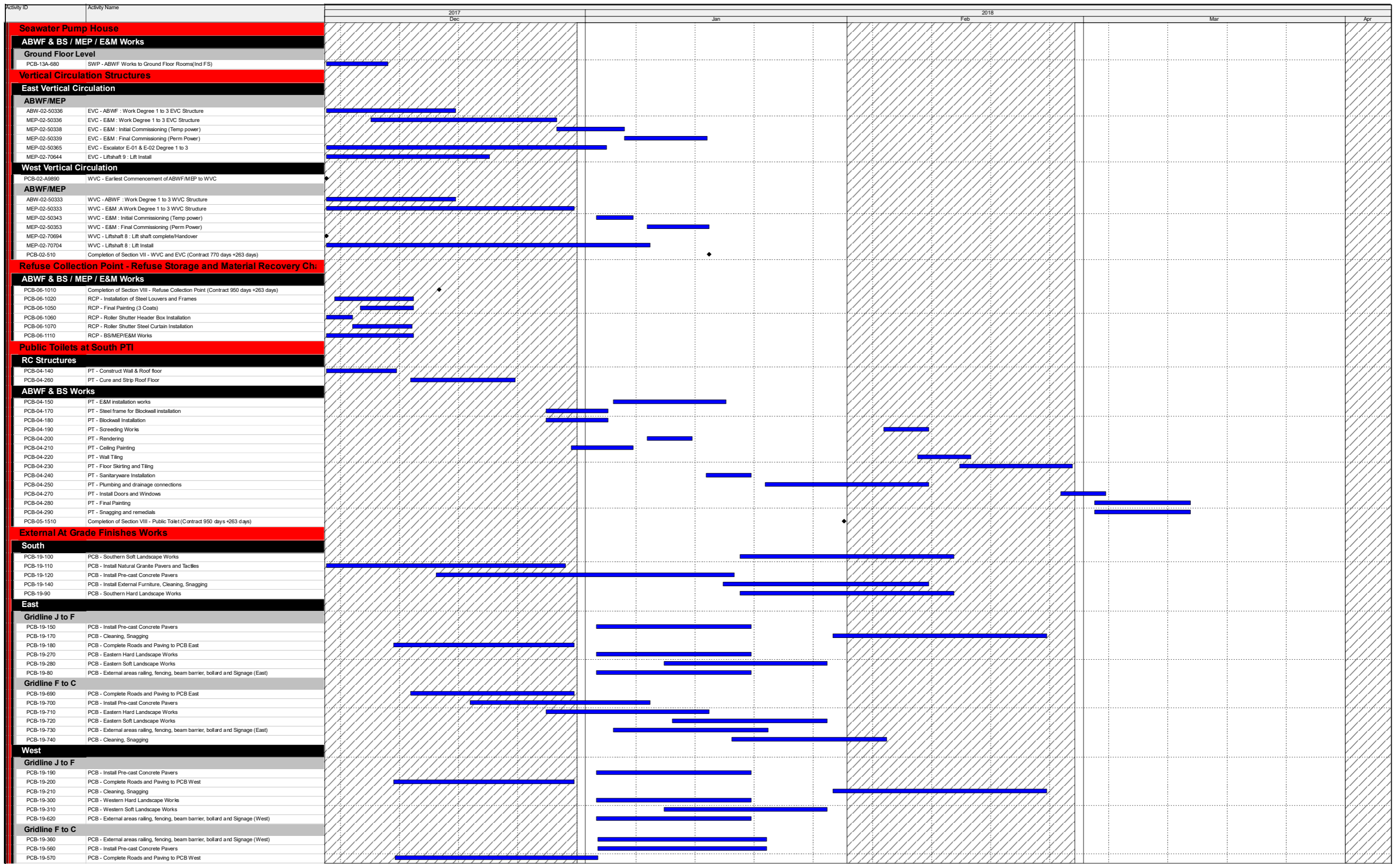
Date	Revision	Checked	Approved



- Actual Work
- Remaining Work
- Critical Remaining Work
- Milestone

Three Month Rolling Programme
 HKMZB HKBCF - Passenger Clearance Building
 Page 10 of 12

Date	Revision	Checked	Approved



- Actual Work
- Remaining Work
- Critical Remaining Work
- Milestone

Three Month Rolling Programme
 HKMZB HKBCF - Passenger Clearance Building
 Page 11 of 12

Date	Revision	Checked	Approved

Activity ID	Activity Name	2017				2018						
		Dec	Jan	Feb	Mar	Apr	May	Jun	Jul			
PCB-19-580	PCB - Cleaning, Snagging											
PCB-19-590	PCB - Western Hard Landscape Works											
PCB-19-600	PCB - Western Soft Landscape Works											
North												
PCB-19-230	PCB - Install Natural Granite Pavers and Tactiles											
PCB-19-240	PCB - Install Pre-cast Concrete Pavers											
PCB-19-260	PCB - Complete Roads and Paving to PCB North EVA											
PCB-19-320	PCB - Hard Landscape Works											
PCB-19-330	PCB - Soft Landscape Works											
PCB-19-750	PCB - Railing, fencing, beam barrier, bollard and Signage (North)											
Underground Utilities Installation												
NORTH												
Pipework												
PCB-11-0010	Stormwater Drainage South of BC (568m) (Precast, uPVC and DI)											
PCB-11-40	Stormwater Drainage North of BC (509m) (Precast, uPVC and DI) North											
PCB-12-50	Fresh Watermains North of BC (400m) (Polyethylene Pipe 315mm) North											
Ductwork												
PCB-18-0010	Utilities and Telecom Ducts (2000m) (uPVC) North (After Surcharge)											
PCB-18-0030	Road Lighting Ducts South of PT1 (1200m) North											
PCB-18-0040	TCSS Ductwork (450m) North											
PCB-18-50	LV and ELV Cable Ducts South of Box Culvert (1500m) North											
PCB-19-810	PCB - Complete sheetpile Platform for Footbridge 4											
EAST												
Gridline J to F												
Utilities												
PCB-11-20	Utilities, Drainage and Ductwork Installation East GL J to F											
Gridline F to C												
Pipework												
PCB-11-70	Utilities, Drainage and Ductwork Installation East GL F to C											
WEST												
Gridline J to F												
Utilities												
PCB-11-10	Utilities, Drainage and Ductwork Installation West GL J to F											
Gridline F to C												
Utilities												
PCB-11-80	Utilities, Drainage and Ductwork Installation East GL F to C											

- Actual Work
- Remaining Work
- Critical Remaining Work
- Milestone

Three Month Rolling Programme
 HKMZB HKBCF - Passenger Clearance Building
 Page 12 of 12

Date	Revision	Checked	Approved