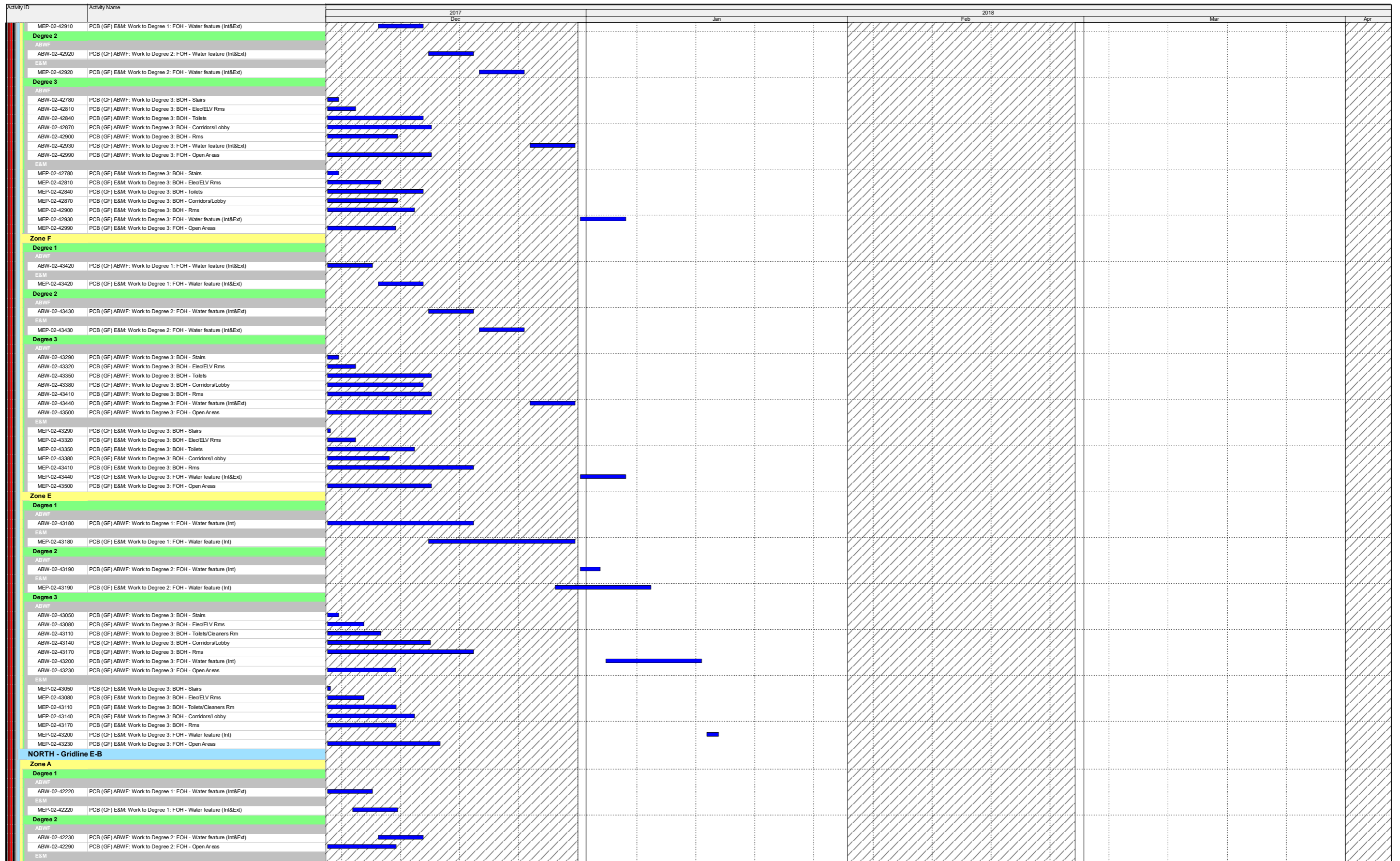


- Actual Work
- Remaining Work
- Critical Remaining Work
- Milestone

Three Month Rolling Programme
 HKMZB HKBCF - Passenger Clearance Building
 Page 1 of 12

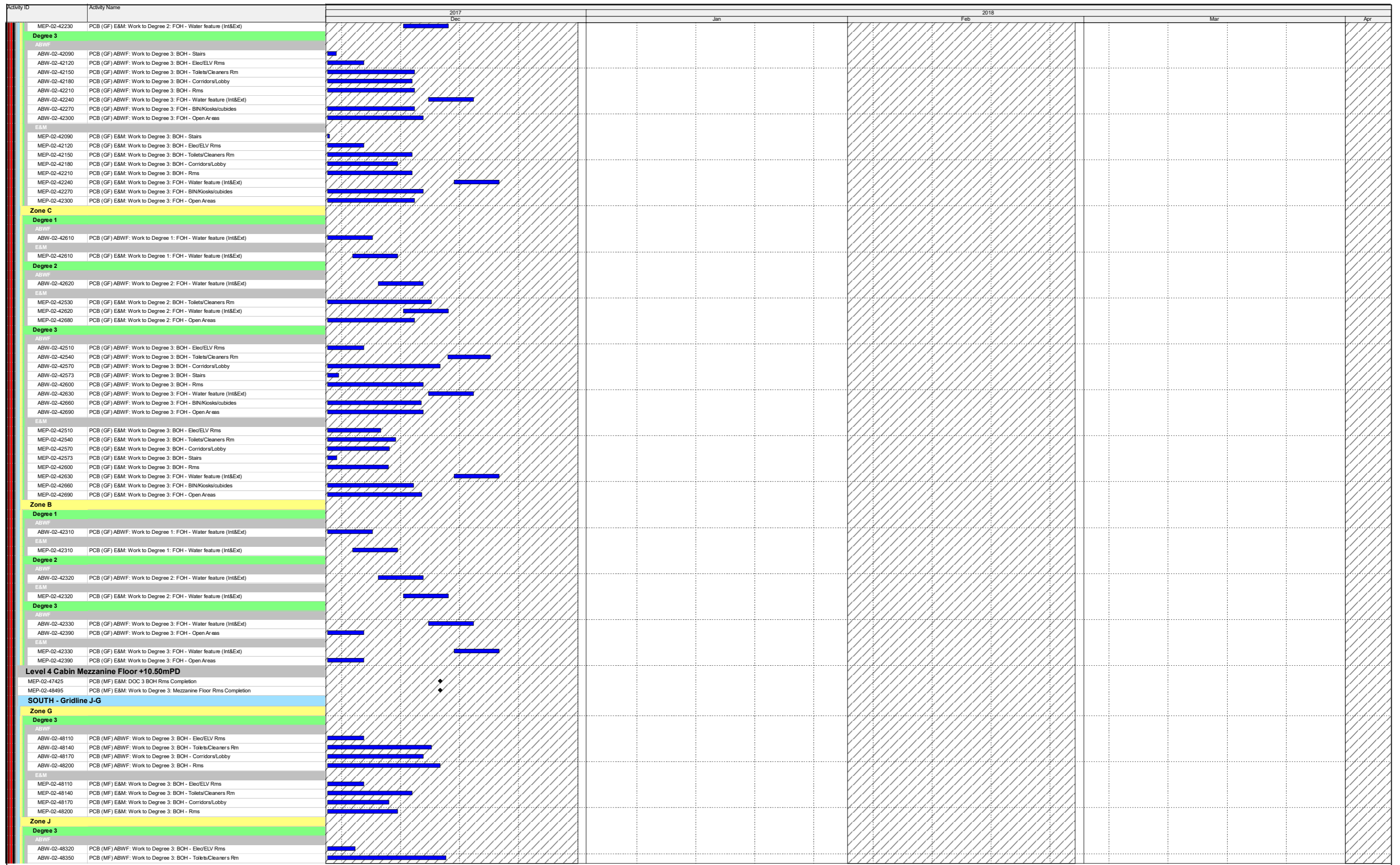
Date	Revision	Checked	Approved



- Actual Work
- Remaining Work
- Critical Remaining Work
- Milestone

Three Month Rolling Programme
 HKMZB HKBCF - Passenger Clearance Building
 Page 2 of 12

Date	Revision	Checked	Approved







- Actual Work
- Remaining Work
- Critical Remaining Work
- Milestone

Three Month Rolling Programme
 HKMZB HKBCF - Passenger Clearance Building
 Page 3 of 12

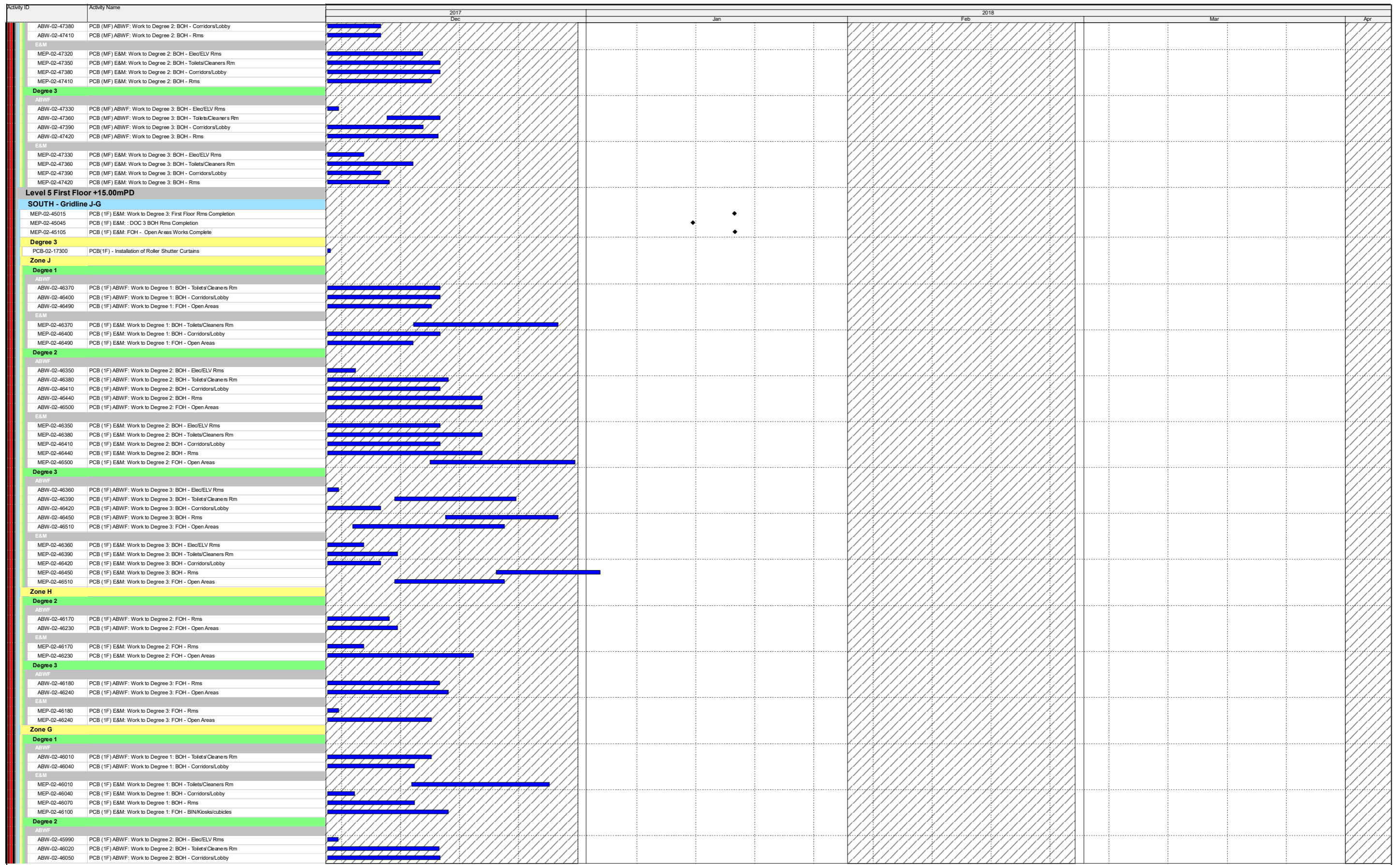
Date	Revision	Checked	Approved

Activity ID	Activity Name	2017				2018			
		Dec	Jan	Feb	Mar	Apr	May	Jun	Jul
ABW-02-48380	PCB (MF) ABWF: Work to Degree 3: BOH - Corridors/Lobby	[Gantt bar: Dec 15 - Dec 25]							
ABW-02-48410	PCB (MF) ABWF: Work to Degree 3: BOH - Rms	[Gantt bar: Dec 15 - Dec 25]							
E&M									
MEP-02-48320	PCB (MF) E&M: Work to Degree 3: BOH - Elec/ELV Rms	[Gantt bar: Dec 15 - Dec 25]							
MEP-02-48350	PCB (MF) E&M: Work to Degree 3: BOH - Toilets/Cleaners Rm	[Gantt bar: Dec 15 - Dec 25]							
MEP-02-48380	PCB (MF) E&M: Work to Degree 3: BOH - Corridors/Lobby	[Gantt bar: Dec 15 - Dec 25]							
MEP-02-48410	PCB (MF) E&M: Work to Degree 3: BOH - Rms	[Gantt bar: Dec 15 - Dec 25]							
MIDDLE - Gridline G-E									
Zone F									
Degree 2									
ABWF									
ABW-02-47920	PCB (MF) ABWF: Work to Degree 2: BOH - Toilets/Cleaners Rm	[Gantt bar: Dec 15 - Dec 25]							
ABW-02-47950	PCB (MF) ABWF: Work to Degree 2: BOH - Corridors/Lobby	[Gantt bar: Dec 15 - Dec 25]							
ABW-02-47980	PCB (MF) ABWF: Work to Degree 2: BOH - Rms	[Gantt bar: Dec 15 - Dec 25]							
E&M									
MEP-02-47890	PCB (MF) E&M: Work to Degree 2: BOH - Elec/ELV Rms	[Gantt bar: Dec 15 - Dec 25]							
MEP-02-47920	PCB (MF) E&M: Work to Degree 2: BOH - Toilets/Cleaners Rm	[Gantt bar: Dec 15 - Dec 25]							
MEP-02-47980	PCB (MF) E&M: Work to Degree 2: BOH - Rms	[Gantt bar: Dec 15 - Dec 25]							
Degree 3									
ABWF									
ABW-02-47900	PCB (MF) ABWF: Work to Degree 3: BOH - Elec/ELV Rms	[Gantt bar: Dec 15 - Dec 25]							
ABW-02-47930	PCB (MF) ABWF: Work to Degree 3: BOH - Toilets/Cleaners Rm	[Gantt bar: Dec 15 - Dec 25]							
ABW-02-47960	PCB (MF) ABWF: Work to Degree 3: BOH - Corridors/Lobby	[Gantt bar: Dec 15 - Dec 25]							
ABW-02-47990	PCB (MF) ABWF: Work to Degree 3: BOH - Rms	[Gantt bar: Dec 15 - Dec 25]							
E&M									
MEP-02-47900	PCB (MF) E&M: Work to Degree 3: BOH - Elec/ELV Rms	[Gantt bar: Dec 15 - Dec 25]							
MEP-02-47930	PCB (MF) E&M: Work to Degree 3: BOH - Toilets/Cleaners Rm	[Gantt bar: Dec 15 - Dec 25]							
MEP-02-47960	PCB (MF) E&M: Work to Degree 3: BOH - Corridors/Lobby	[Gantt bar: Dec 15 - Dec 25]							
MEP-02-47990	PCB (MF) E&M: Work to Degree 3: BOH - Rms	[Gantt bar: Dec 15 - Dec 25]							
Zone D									
Degree 3									
ABWF									
ABW-02-47540	PCB (MF) ABWF: Work to Degree 3: BOH - Elec/ELV Rms	[Gantt bar: Dec 15 - Dec 25]							
ABW-02-47570	PCB (MF) ABWF: Work to Degree 3: BOH - Toilets/Changing Rm	[Gantt bar: Dec 15 - Dec 25]							
ABW-02-47600	PCB (MF) ABWF: Work to Degree 3: BOH - Corridors/Lobby	[Gantt bar: Dec 15 - Dec 25]							
ABW-02-47630	PCB (MF) ABWF: Work to Degree 3: BOH - Rms	[Gantt bar: Dec 15 - Dec 25]							
E&M									
MEP-02-47540	PCB (MF) E&M: Work to Degree 3: BOH - Elec/ELV Rms	[Gantt bar: Dec 15 - Dec 25]							
MEP-02-47570	PCB (MF) E&M: Work to Degree 3: BOH - Toilets/Changing Rm	[Gantt bar: Dec 15 - Dec 25]							
MEP-02-47600	PCB (MF) E&M: Work to Degree 3: BOH - Corridors/Lobby	[Gantt bar: Dec 15 - Dec 25]							
MEP-02-47630	PCB (MF) E&M: Work to Degree 3: BOH - Rms	[Gantt bar: Dec 15 - Dec 25]							
Zone E									
Degree 2									
ABWF									
ABW-02-47740	PCB (MF) ABWF: Work to Degree 2: BOH - Toilets/Cleaners Rm	[Gantt bar: Dec 15 - Dec 25]							
ABW-02-47770	PCB (MF) ABWF: Work to Degree 2: BOH - Corridors/Lobby	[Gantt bar: Dec 15 - Dec 25]							
ABW-02-47800	PCB (MF) ABWF: Work to Degree 2: BOH - Rms	[Gantt bar: Dec 15 - Dec 25]							
E&M									
MEP-02-47710	PCB (MF) E&M: Work to Degree 2: BOH - Elec/ELV Rms	[Gantt bar: Dec 15 - Dec 25]							
MEP-02-47740	PCB (MF) E&M: Work to Degree 2: BOH - Toilets/Cleaners Rm	[Gantt bar: Dec 15 - Dec 25]							
MEP-02-47770	PCB (MF) E&M: Work to Degree 2: BOH - Corridors/Lobby	[Gantt bar: Dec 15 - Dec 25]							
MEP-02-47800	PCB (MF) E&M: Work to Degree 2: BOH - Rms	[Gantt bar: Dec 15 - Dec 25]							
Degree 3									
ABWF									
ABW-02-47720	PCB (MF) ABWF: Work to Degree 3: BOH - Elec/ELV Rms	[Gantt bar: Dec 15 - Dec 25]							
ABW-02-47750	PCB (MF) ABWF: Work to Degree 3: BOH - Toilets/Cleaners Rm	[Gantt bar: Dec 15 - Dec 25]							
ABW-02-47780	PCB (MF) ABWF: Work to Degree 3: BOH - Corridors/Lobby	[Gantt bar: Dec 15 - Dec 25]							
ABW-02-47810	PCB (MF) ABWF: Work to Degree 3: BOH - Rms	[Gantt bar: Dec 15 - Dec 25]							
E&M									
MEP-02-47720	PCB (MF) E&M: Work to Degree 3: BOH - Elec/ELV Rms	[Gantt bar: Dec 15 - Dec 25]							
MEP-02-47750	PCB (MF) E&M: Work to Degree 3: BOH - Toilets/Cleaners Rm	[Gantt bar: Dec 15 - Dec 25]							
MEP-02-47780	PCB (MF) E&M: Work to Degree 3: BOH - Corridors/Lobby	[Gantt bar: Dec 15 - Dec 25]							
MEP-02-47810	PCB (MF) E&M: Work to Degree 3: BOH - Rms	[Gantt bar: Dec 15 - Dec 25]							
NORTH - Gridline E-B									
Zone A									
Degree 2									
ABWF									
ABW-02-47110	PCB (MF) ABWF: Work to Degree 2: BOH - Elec/ELV Rms	[Gantt bar: Dec 15 - Dec 25]							
ABW-02-47140	PCB (MF) ABWF: Work to Degree 2: BOH - Toilets	[Gantt bar: Dec 15 - Dec 25]							
ABW-02-47200	PCB (MF) ABWF: Work to Degree 2: BOH - Rms	[Gantt bar: Dec 15 - Dec 25]							
E&M									
MEP-02-47110	PCB (MF) E&M: Work to Degree 2: BOH - Elec/ELV Rms	[Gantt bar: Dec 15 - Dec 25]							
MEP-02-47140	PCB (MF) E&M: Work to Degree 2: BOH - Toilets	[Gantt bar: Dec 15 - Dec 25]							
MEP-02-47170	PCB (MF) E&M: Work to Degree 2: BOH - Corridors/Lobby	[Gantt bar: Dec 15 - Dec 25]							
MEP-02-47200	PCB (MF) E&M: Work to Degree 2: BOH - Rms	[Gantt bar: Dec 15 - Dec 25]							
Degree 3									
ABWF									
ABW-02-47120	PCB (MF) ABWF: Work to Degree 3: BOH - Elec/ELV Rms	[Gantt bar: Dec 15 - Dec 25]							
ABW-02-47150	PCB (MF) ABWF: Work to Degree 3: BOH - Toilets	[Gantt bar: Dec 15 - Dec 25]							
ABW-02-47180	PCB (MF) ABWF: Work to Degree 3: BOH - Corridors/Lobby	[Gantt bar: Dec 15 - Dec 25]							
ABW-02-47210	PCB (MF) ABWF: Work to Degree 3: BOH - Rms	[Gantt bar: Dec 15 - Dec 25]							
E&M									
MEP-02-47120	PCB (MF) E&M: Work to Degree 3: BOH - Elec/ELV Rms	[Gantt bar: Dec 15 - Dec 25]							
MEP-02-47150	PCB (MF) E&M: Work to Degree 3: BOH - Toilets	[Gantt bar: Dec 15 - Dec 25]							
MEP-02-47180	PCB (MF) E&M: Work to Degree 3: BOH - Corridors/Lobby	[Gantt bar: Dec 15 - Dec 25]							
MEP-02-47210	PCB (MF) E&M: Work to Degree 3: BOH - Rms	[Gantt bar: Dec 15 - Dec 25]							
Zone C									
Degree 2									
ABWF									
ABW-02-47320	PCB (MF) ABWF: Work to Degree 2: BOH - Elec/ELV Rms	[Gantt bar: Dec 15 - Dec 25]							
ABW-02-47350	PCB (MF) ABWF: Work to Degree 2: BOH - Toilets/Cleaners Rm	[Gantt bar: Dec 15 - Dec 25]							

-  Actual Work
-  Remaining Work
-  Critical Remaining Work
-  Milestone

Three Month Rolling Programme
 HKMZB HKBCF - Passenger Clearance Building
 Page 4 of 12

Date	Revision	Checked	Approved



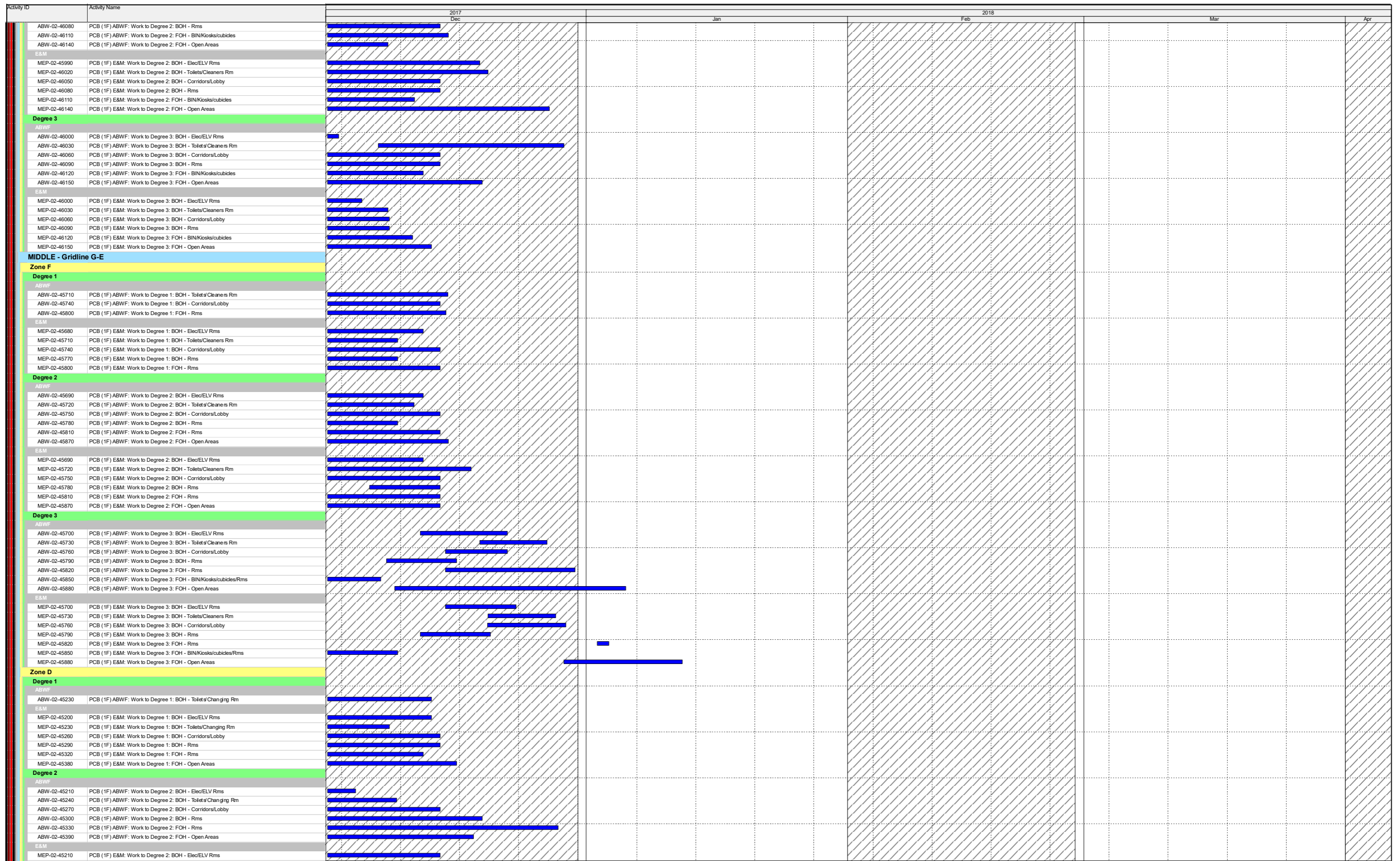
- Actual Work
- Remaining Work
- Critical Remaining Work
- Milestone

Three Month Rolling Programme

HKMZB HKBCF - Passenger Clearance Building

Page 5 of 12

Date	Revision	Checked	Approved



- Actual Work
- Remaining Work
- Critical Remaining Work
- ◆ Milestone

Three Month Rolling Programme
 HKMZB HKBCF - Passenger Clearance Building
 Page 6 of 12

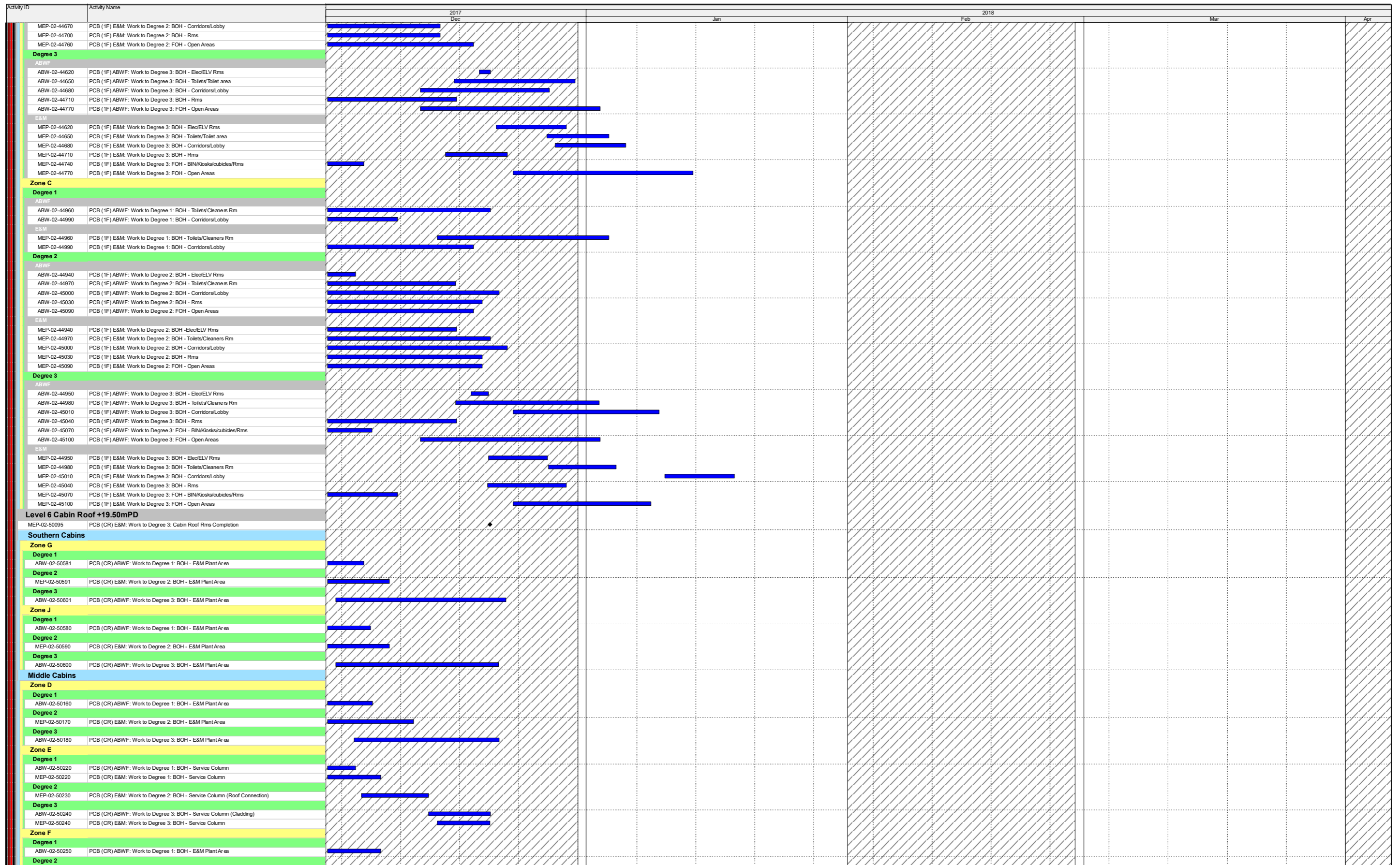
Date	Revision	Checked	Approved

Activity ID	Activity Name	2017				2018			
		Dec	Jan	Feb	Mar	Apr	May	Jun	Jul
MEP-02-45240	PCB (1F) E&M: Work to Degree 2: BOH - Toilets/Changing Rm	[Gantt bar]							
MEP-02-45270	PCB (1F) E&M: Work to Degree 2: BOH - Corridors/Lobby	[Gantt bar]							
MEP-02-45300	PCB (1F) E&M: Work to Degree 2: BOH - Rms	[Gantt bar]							
MEP-02-45330	PCB (1F) E&M: Work to Degree 2: FOH - Rms	[Gantt bar]							
MEP-02-45390	PCB (1F) E&M: Work to Degree 2: FOH - Open Areas	[Gantt bar]							
Degree 3									
ABWF									
ABW-02-45220	PCB (1F) ABWF: Work to Degree 3: BOH - Elec/ELV Rms	[Gantt bar]							
ABW-02-45250	PCB (1F) ABWF: Work to Degree 3: BOH - Toilets/Changing Rm	[Gantt bar]							
ABW-02-45280	PCB (1F) ABWF: Work to Degree 3: BOH - Corridors/Lobby	[Gantt bar]							
ABW-02-45310	PCB (1F) ABWF: Work to Degree 3: BOH - Rms	[Gantt bar]							
ABW-02-45340	PCB (1F) ABWF: Work to Degree 3: FOH - Rms	[Gantt bar]							
ABW-02-45400	PCB (1F) ABWF: Work to Degree 3: FOH - Open Areas	[Gantt bar]							
E&M									
MEP-02-45220	PCB (1F) E&M: Work to Degree 3: BOH - Elec/ELV Rms	[Gantt bar]							
MEP-02-45250	PCB (1F) E&M: Work to Degree 3: BOH - Toilets/Changing Rm	[Gantt bar]							
MEP-02-45280	PCB (1F) E&M: Work to Degree 3: BOH - Corridors/Lobby	[Gantt bar]							
MEP-02-45310	PCB (1F) E&M: Work to Degree 3: BOH - Rms	[Gantt bar]							
MEP-02-45340	PCB (1F) E&M: Work to Degree 3: FOH - Rms	[Gantt bar]							
MEP-02-45370	PCB (1F) E&M: Work to Degree 3: FOH - BIN/Kiosks/cubicles/Rms	[Gantt bar]							
MEP-02-45400	PCB (1F) E&M: Work to Degree 3: FOH - Open Areas	[Gantt bar]							
Zone E									
Degree 1									
ABWF									
ABW-02-45500	PCB (1F) ABWF: Work to Degree 1: BOH - Toilets/Cleaners Rm	[Gantt bar]							
ABW-02-45530	PCB (1F) ABWF: Work to Degree 1: BOH - Corridors/Lobby	[Gantt bar]							
E&M									
MEP-02-45470	PCB (1F) E&M: Work to Degree 1: BOH - Elec/ELV Rms	[Gantt bar]							
MEP-02-45500	PCB (1F) E&M: Work to Degree 1: BOH - Toilets/Cleaners Rm	[Gantt bar]							
MEP-02-45530	PCB (1F) E&M: Work to Degree 1: BOH - Corridors/Lobby	[Gantt bar]							
MEP-02-45560	PCB (1F) E&M: Work to Degree 1: BOH - Rms	[Gantt bar]							
Degree 2									
ABWF									
ABW-02-45480	PCB (1F) ABWF: Work to Degree 2: BOH - Elec/ELV Rms	[Gantt bar]							
ABW-02-45510	PCB (1F) ABWF: Work to Degree 2: BOH - Toilets/Cleaners Rm	[Gantt bar]							
ABW-02-45540	PCB (1F) ABWF: Work to Degree 2: BOH - Corridors/Lobby	[Gantt bar]							
ABW-02-45570	PCB (1F) ABWF: Work to Degree 2: BOH - Rms	[Gantt bar]							
ABW-02-45600	PCB (1F) ABWF: Work to Degree 2: FOH - Open Areas	[Gantt bar]							
E&M									
MEP-02-45480	PCB (1F) E&M: Work to Degree 2: BOH - Elec/ELV Rms	[Gantt bar]							
MEP-02-45510	PCB (1F) E&M: Work to Degree 2: BOH - Toilets/Cleaners Rm	[Gantt bar]							
MEP-02-45540	PCB (1F) E&M: Work to Degree 2: BOH - Corridors/Lobby	[Gantt bar]							
MEP-02-45570	PCB (1F) E&M: Work to Degree 2: BOH - Rms	[Gantt bar]							
MEP-02-45600	PCB (1F) E&M: Work to Degree 2: FOH - Open Areas	[Gantt bar]							
Degree 3									
ABWF									
ABW-02-45490	PCB (1F) ABWF: Work to Degree 3: BOH - Elec/ELV Rms	[Gantt bar]							
ABW-02-45520	PCB (1F) ABWF: Work to Degree 3: BOH - Toilets/Cleaners Rm	[Gantt bar]							
ABW-02-45550	PCB (1F) ABWF: Work to Degree 3: BOH - Corridors/Lobby	[Gantt bar]							
ABW-02-45580	PCB (1F) ABWF: Work to Degree 3: BOH - Rms	[Gantt bar]							
ABW-02-45610	PCB (1F) ABWF: Work to Degree 3: FOH - Open Areas	[Gantt bar]							
E&M									
MEP-02-45490	PCB (1F) E&M: Work to Degree 3: BOH - Elec/ELV Rms	[Gantt bar]							
MEP-02-45520	PCB (1F) E&M: Work to Degree 3: BOH - Toilets/Cleaners Rm	[Gantt bar]							
MEP-02-45550	PCB (1F) E&M: Work to Degree 3: BOH - Corridors/Lobby	[Gantt bar]							
MEP-02-45580	PCB (1F) E&M: Work to Degree 3: BOH - Rms	[Gantt bar]							
MEP-02-45610	PCB (1F) E&M: Work to Degree 3: FOH - Open Areas	[Gantt bar]							
Degree 3									
PCB-02-17710	PCB(1F) - Installation of Roller Shutter Curtains	[Gantt bar]							
NORTH - Gridline E-B									
Degree 3									
PCB-02-18030	PCB(1F) - Installation of Roller Shutter Curtains	[Gantt bar]							
Zone B									
Degree 2									
ABWF									
ABW-02-44820	PCB (1F) ABWF: Work to Degree 2: FOH - Open Areas	[Gantt bar]							
E&M									
MEP-02-44820	PCB (1F) E&M: Work to Degree 2: FOH - Open Areas	[Gantt bar]							
Degree 3									
ABWF									
ABW-02-44830	PCB (1F) ABWF: Work to Degree 3: FOH - Open Areas	[Gantt bar]							
E&M									
MEP-02-44800	PCB (1F) E&M: Work to Degree 3: FOH - BIN/Kiosks/cubicles/Rms	[Gantt bar]							
MEP-02-44830	PCB (1F) E&M: Work to Degree 3: FOH - Open Areas	[Gantt bar]							
Zone A									
Degree 1									
ABWF									
ABW-02-44630	PCB (1F) ABWF: Work to Degree 1: BOH - Toilets/Cleaners Rm	[Gantt bar]							
ABW-02-44660	PCB (1F) ABWF: Work to Degree 1: BOH - Corridors/Lobby	[Gantt bar]							
E&M									
MEP-02-44630	PCB (1F) E&M: Work to Degree 1: BOH - Toilets/Toilet area	[Gantt bar]							
MEP-02-44660	PCB (1F) E&M: Work to Degree 1: BOH - Corridors/Lobby	[Gantt bar]							
Degree 2									
ABWF									
ABW-02-44640	PCB (1F) ABWF: Work to Degree 2: BOH - Toilets/Toilet area	[Gantt bar]							
ABW-02-44670	PCB (1F) ABWF: Work to Degree 2: BOH - Corridors/Lobby	[Gantt bar]							
ABW-02-44700	PCB (1F) ABWF: Work to Degree 2: BOH - Rms	[Gantt bar]							
ABW-02-44760	PCB (1F) ABWF: Work to Degree 2: FOH - Open Areas	[Gantt bar]							
E&M									
MEP-02-44610	PCB (1F) E&M: Work to Degree 2: BOH - Elec/ELV Rms	[Gantt bar]							
MEP-02-44640	PCB (1F) E&M: Work to Degree 2: BOH - Toilets/Toilet area	[Gantt bar]							

- Actual Work
- Remaining Work
- Critical Remaining Work
- Milestone

Three Month Rolling Programme
 HKMZB HKBCF - Passenger Clearance Building
 Page 7 of 12

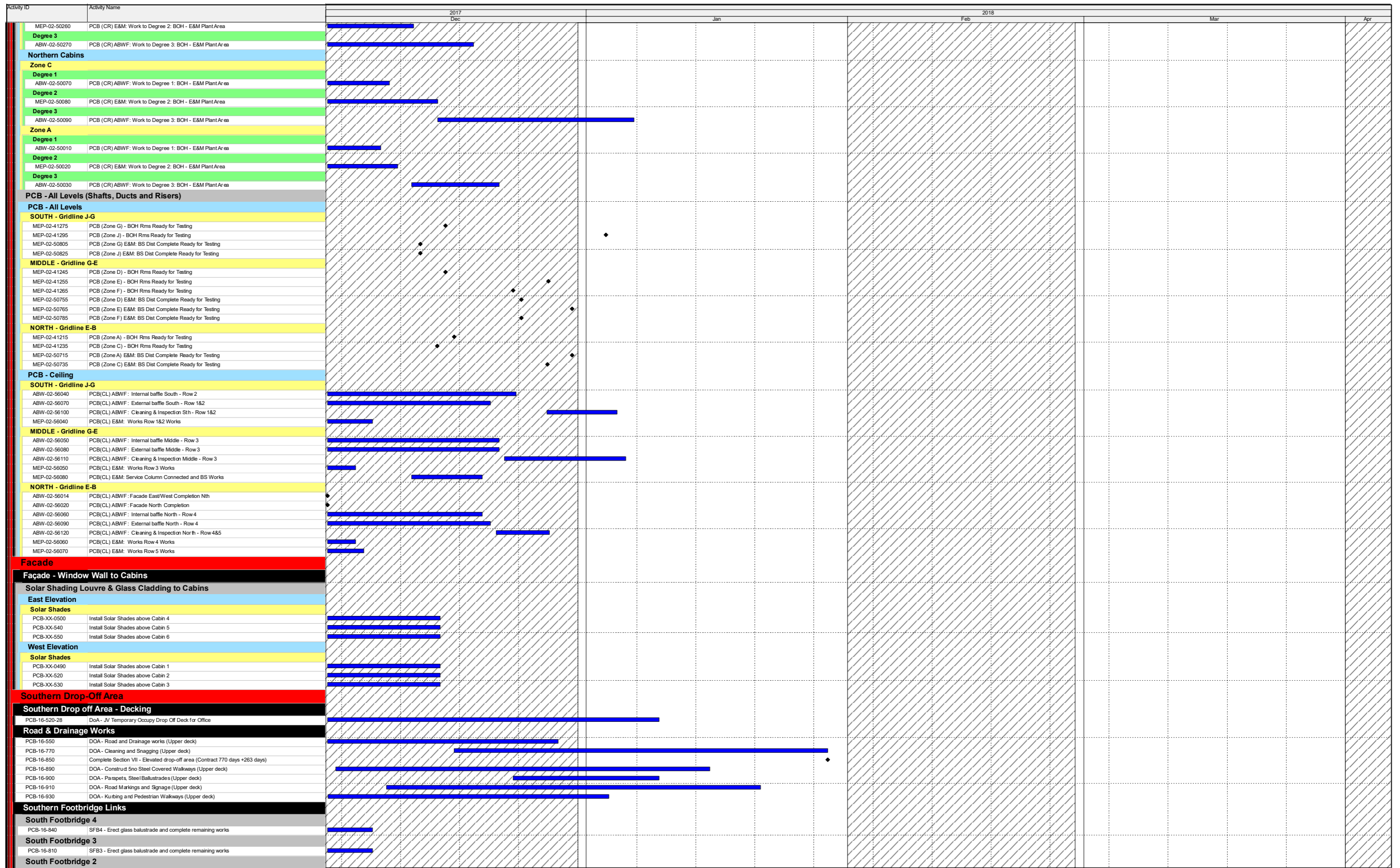
Date	Revision	Checked	Approved



Three Month Rolling Programme

HKMZB HKBCF - Passenger Clearance Building
Page 8 of 12

Date	Revision	Checked	Approved



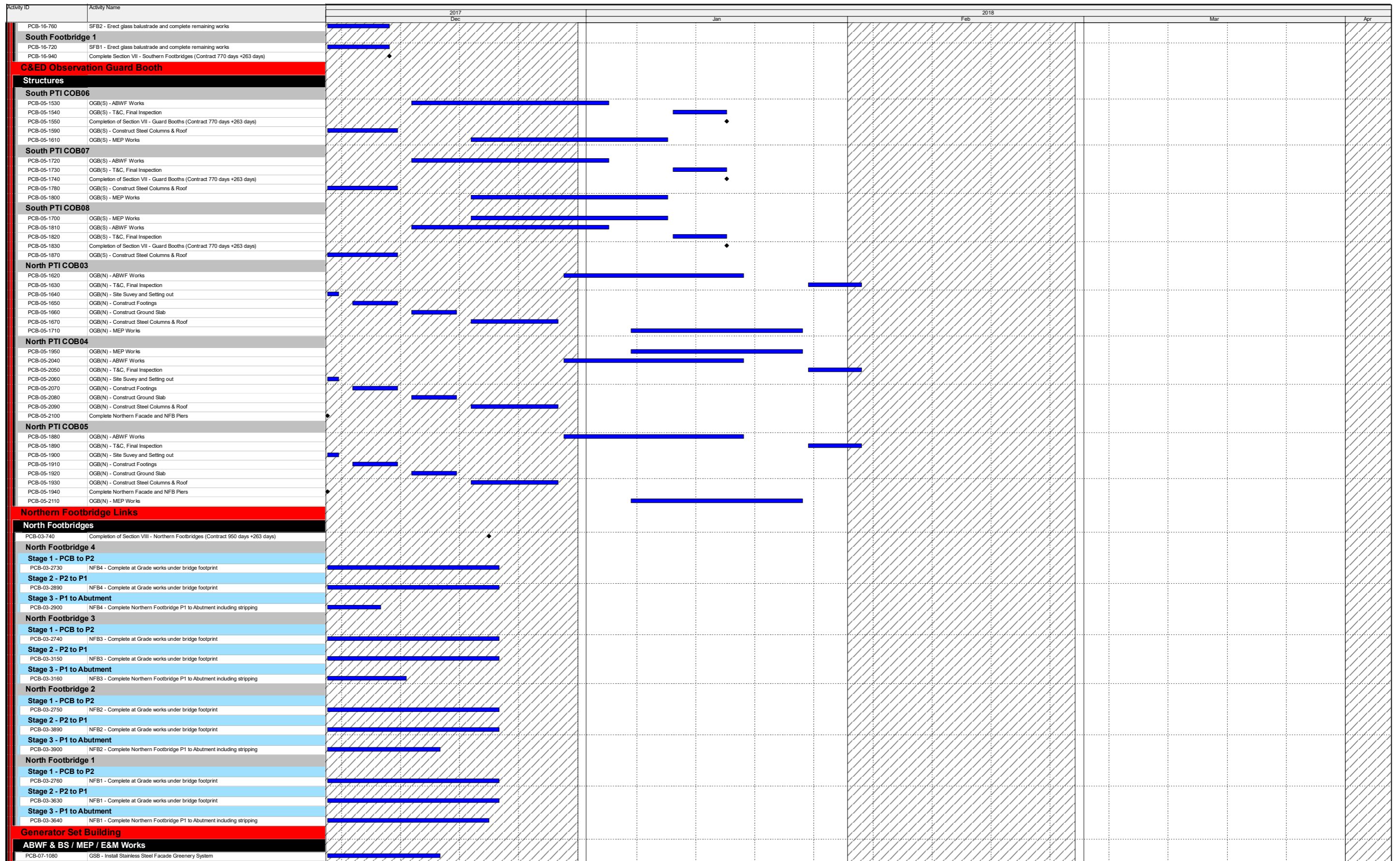
- Actual Work
- Remaining Work
- Critical Remaining Work
- Milestone

Three Month Rolling Programme

HKMZB HKBCF - Passenger Clearance Building

Page 9 of 12

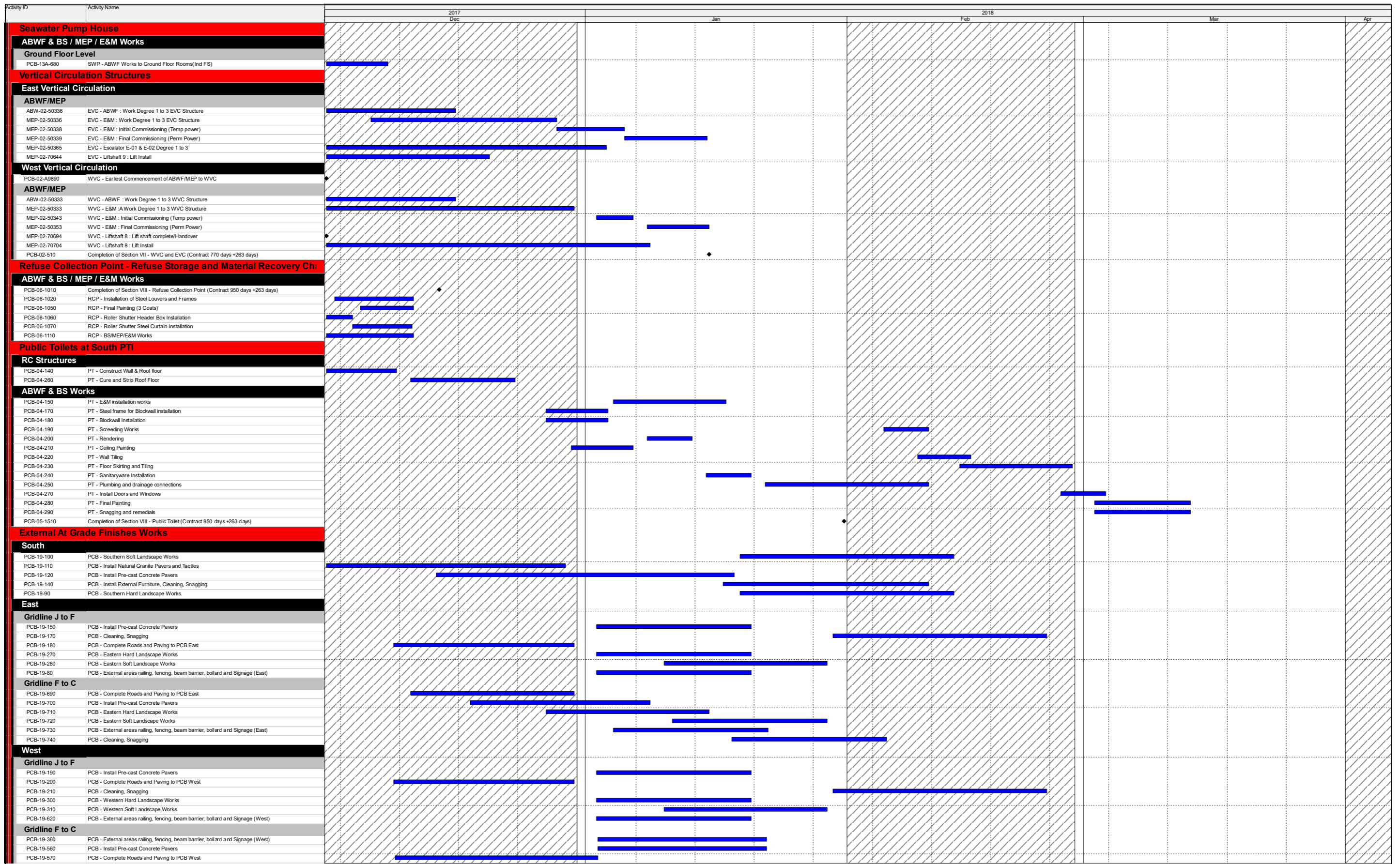
Date	Revision	Checked	Approved



Three Month Rolling Programme

HKMZB HKBCF - Passenger Clearance Building
Page 10 of 12

Date	Revision	Checked	Approved



- Actual Work
- Remaining Work
- Critical Remaining Work
- Milestone

Three Month Rolling Programme
 HKMZB HKBCF - Passenger Clearance Building
 Page 11 of 12

Date	Revision	Checked	Approved

Activity ID	Activity Name	2017				2018						
		Dec	Jan	Feb	Mar	Apr	May	Jun	Jul			
PCB-19-580	PCB - Cleaning, Snagging											
PCB-19-590	PCB - Western Hard Landscape Works											
PCB-19-600	PCB - Western Soft Landscape Works											
North												
PCB-19-230	PCB - Install Natural Granite Pavers and Tactiles											
PCB-19-240	PCB - Install Pre-cast Concrete Pavers											
PCB-19-260	PCB - Complete Roads and Paving to PCB North EVA											
PCB-19-320	PCB - Hard Landscape Works											
PCB-19-330	PCB - Soft Landscape Works											
PCB-19-750	PCB - Railing, fencing, beam barrier, bollard and Signage (North)											
Underground Utilities Installation												
NORTH												
Pipework												
PCB-11-0010	Stormwater Drainage South of BC (568m) (Precast, uPVC and DI)											
PCB-11-40	Stormwater Drainage North of BC (509m) (Precast, uPVC and DI) North											
PCB-12-50	Fresh Watermains North of BC (400m) (Polyethylene Pipe 315mm) North											
Ductwork												
PCB-18-0010	Utilities and Telecom Ducts (2000m) (uPVC) North (After Surcharge)											
PCB-18-0030	Road Lighting Ducts South of PT1 (1200m) North											
PCB-18-0040	TCSS Ductwork (450m) North											
PCB-18-50	LV and ELV Cable Ducts South of Box Culvert (1500m) North											
PCB-19-810	PCB - Complete sheetpile Platform for Footbridge 4											
EAST												
Gridline J to F												
Utilities												
PCB-11-20	Utilities, Drainage and Ductwork Installation East GL J to F											
Gridline F to C												
Pipework												
PCB-11-70	Utilities, Drainage and Ductwork Installation East GL F to C											
WEST												
Gridline J to F												
Utilities												
PCB-11-10	Utilities, Drainage and Ductwork Installation West GL J to F											
Gridline F to C												
Utilities												
PCB-11-80	Utilities, Drainage and Ductwork Installation East GL F to C											

- Actual Work
- Remaining Work
- Critical Remaining Work
- Milestone

Three Month Rolling Programme
 HKMZB HKBCF - Passenger Clearance Building
 Page 12 of 12

Date	Revision	Checked	Approved

Activity ID	Activity Name	2015												2016				2017				2018				2019		
		Q2	Q3	Q4	Q1	Q2	Q3	Q4	Q1	Q2	Q3	Q4	Q1	Q2	Q3	Q4	Q1	Q2	Q3									
Hong Kong-Zhuhai_Macao Bridge Hong Kong Boundary Crossing F		<p>22-Oct-17, Hong Kong-Zhuhai_Macao Bridge</p> <p>23-Jun-17, Site and Facility Inspection</p> <p>24-Aug-17, Access Dates</p>																										
Key Dates																												
Interface Activities																												
Site and Facility Inspection																												
JS1200	Pre Site and Facility Inspection by Contractor at Location 4 - Deg2																											
JS1210	Joint Site and Facility Inspection with Interface Contractor at Location 4 - Deg2																											
JS1620	Pre Site and Facility Inspection by Contractor at Location 14 - Deg2																											
JS1630	Joint Site and Facility Inspection with Interface Contractor at Location 14 - Deg2																											
JS1760	Pre Site and Facility Inspection by Contractor at Location 18 - Deg1																											
JS1770	Joint Site and Facility Inspection with Interface Contractor at Location 18 - Deg1																											
JS1780	Pre Site and Facility Inspection by Contractor at Location 18 - Deg2																											
JS1790	Joint Site and Facility Inspection with Interface Contractor at Location 18 - Deg2																											
Access Dates																												
AD1000	Location 1(PCB (001) Basement)-Deg1 (270d)																											
AD1010	Location 1(PCB (001) Basement)-Deg2 (380d)																											
AD1020	Location 1(PCB (001) ELV Room (Grid Line E3))-Deg1 (270d)																											
AD1030	Location 1(PCB (001) ELV Room (Grid Line E3))-Deg2 (380d)																											
AD1040	Location 2(PCB (001) First Floor Main Server Room)-Deg1 (330d)																											
AD1050	Location 2(PCB (001) First Floor Main Server Room)-Deg2 (380d)																											
AD1060	Location 2(PCB (001) First Floor Main Server Room) - For Server Installation - Deg2 (380d)																											
AD1070	Location 2(PCB (001) Ground Floor ELV Room (Grid Line E3)) - Deg1 (330d)																											
AD1080	Location 2(PCB (001) Ground Floor DOH Port Health Control Room (Grid Line BD5)) - Deg1 (330d)																											
AD1090	Location 2(PCB (001) Ground Floor DOH Port Health Control Room (Grid Line BD5)) - Deg2 (380d)																											
AD1130	Location 3(Inbd Cargo Exam Bldg (037) Platform Control Room)-Deg2 (500d)																											
AD1150	Location 3(Inbd Cargo Exam Bldg (037) Inspector Offices 128,129,130,131,128,129,14)																											
AD1170	Location 3a(Inbd Cargo Exam Bldg (037) ROCARS Room)-Deg2 (480d)																											
AD1190	Location 3a(Inbd Cargo Exam Bldg (037) Main Server Room)-Deg2 (480d)																											
AD1200	Location 3a(Inbd Cargo Exam Bldg (037) Main Server Room) - For Server installation - Deg2 (480d)																											
AD1220	Location 4(Outbd Cargo Exam Bldg (023))-Deg2 (680d)																											
AD1240	Location 4a(Outbd Cargo Exam Bldg (023))-Deg2 (630d)																											
AD1270	Location 6(Common Utility Enclosure & Staff Subway)-Deg1 (400d)																											
AD1290	Location 7(Common Utility Enclosure & Staff Subway)-Deg1 (270d)																											
AD1300	Location 8(Inbd Private Car Annex (025))-Deg1 (430d)																											
AD1310	Location 8(Inbd Private Car Annex (025))-Deg2 (580d)																											
AD1320	Location 8(Inbd Private Car Annex (025) Canopy)-Deg1 (430d)																											
AD1330	Location 8(Inbd Private Car Annex (025) Canopy)-Deg2 (580d)																											
AD1340	Location 9(Outbd Private Car Annex (032))-Deg1 (520d)																											
AD1350	Location 9(Outbd Private Car Annex (032))-Deg2 (660d)																											
AD1360	Location 9(Outbd Private Car Annex (032) Canopy)-Deg1 (520d)																											
AD1370	Location 9(Outbd Private Car Annex (032) Canopy)-Deg2 (660d)																											
AD1501	Location 12(Inbd Private Car Kiosks(027))-Deg1 (400d) Phase 2																											
AD1510	Location 12(Inbd Private Car Kiosks(027))-Deg2 (480d) Phase 1																											
AD1511	Location 12(Inbd Private Car Kiosks(027))-Deg2 (480d) Phase 2																											
AD1521	Location 12(Inbd Private Car Kiosks(027) Canopy)-Deg1 (400d) Phase 2																											

Programme No.: HZMB-DWP
Data Date: 14-Aug-15

- Actual Level of Effort
- Primary Baseline
- Actual Work
- Remaining Work
- Critical Remaining Work
- Baseline Milestone
- Milestone

Hong Kong-Zhuhai-Macao Bridge
Hong Kong Boundary Crossing
Facilities - Automatic Vehicle
Clearance Support System (AVCSS)

Date	Revision	Checked	Approved
14-Nov-16	Rev.: 0	WC	LC
10-Mar-17	Rev.: 1.0a	WC	LC
5-May-17	Rev.: 1.0b	WC	LC

Activity ID	Activity Name	2015			2016				2017				2018				2019			
		Q2	Q3	Q4	Q1	Q2	Q3	Q4	Q1	Q2	Q3	Q4	Q1	Q2	Q3	Q4	Q1	Q2	Q3	
AD1530	Location 12(Inbd Private Car Kiosks(027) Canopy)-Deg2 (480d) Phase 1																			
AD1531	Location 12(Inbd Private Car Kiosks(027) Canopy)-Deg2 (480d) Phase 2																			
AD1540	Location 12(Inbd GV Kiosks (028))-Deg1 (400d) Phase 1																			
AD1541	Location 12(Inbd GV Kiosks (028))-Deg1 (400d) Phase 2																			
AD1550	Location 12(Inbd GV Kiosks (028))-Deg2 (480d) Phase 1																			
AD1551	Location 12(Inbd GV Kiosks (028))-Deg2 (480d) Phase 2																			
AD1560	Location 12(Inbd GV Kiosks (028) Canopy)-Deg1 (400d) Phase 1																			
AD1561	Location 12(Inbd GV Kiosks (028) Canopy)-Deg1 (400d) Phase 2																			
AD1570	Location 12(Inbd GV Kiosks (028) Canopy)-Deg2 (480d) Phase 1																			
AD1571	Location 12(Inbd GV Kiosks (028) Canopy)-Deg2 (480d) Phase 2																			
AD1580	Location 12(Outbd GV Kiosks (029))-Deg1 (400d) Phase 1																			
AD1581	Location 12(Outbd GV Kiosks (029))-Deg1 (400d) Phase 2																			
AD1590	Location 12(Outbd GV Kiosks (029))-Deg2 (480d) Phase 1																			
AD1591	Location 12(Outbd GV Kiosks (029))-Deg2 (480d) Phase 2																			
AD1600	Location 12(Outbd GV Kiosks (029) Canopy)-Deg1 (400d) Phase 1																			
AD1601	Location 12(Outbd GV Kiosks (029) Canopy)-Deg1 (400d) Phase 2																			
AD1610	Location 12(Outbd GV Kiosks (029) Canopy)-Deg2 (480d) Phase 1																			
AD1611	Location 12(Outbd GV Kiosks (029) Canopy)-Deg2 (480d) Phase 2																			
AD1620	Location 13(Outbd Private Car Kiosks (030))-Deg1 (480d) Phase 1																			
AD1630	Location 13(Outbd Private Car Kiosks (030))-Deg2 (550d) Phase 1																			
AD1640	Location 13(Outbd Private Car Kiosks (030) Canopy)-Deg1 (480d) Phase 1																			
AD1650	Location 13(Outbd Private Car Kiosks (030) Canopy)-Deg2 (550d) Phase 1																			
AD1660	Location 14(Future-Outbd/Inbd Private Car Kiosks)-Deg1 (610d)																			
AD1670	Location 14(Future-Outbd/Inbd Private Car Kiosks)-Deg2 (680d)																			
AD1700	Location 16(Outbd Traffic Control Kiosk (101))-Deg1 (400d)																			
AD1710	Location 16(Outbd Traffic Control Kiosk (101))-Deg2 (480d)																			
AD1740	Location 18(Outbd Private Car Exam Bldg(024))-Deg1 (-)																			
AD1750	Location 18(Outbd Private Car Exam Bldg(024))-Deg2 (670d)																			
AD1780	(by C03) Underground Ducting (UUD1.1) between CUE and Inbd Cargo Exam Bldg (0																			
AD1790	(by C03) (UUD1.2) between Inbd Cargo Exam Bldg South (037[S]) and DOH Cargo C																			
AD1800	(by C03) (UUD2) between Inbd Cargo Exam Bldg North (037[N]) and Inbd Vehicle Cle																			
AD1810	(by C03) (UUD9.1) btw Inbd Cargo Exam Bldg S.(037[S]) & Inbd PC Exam Bldg(033) &																			
AD1820	(by C03) (UUD9.3) between Inbd Private Car Exam Bldg (033) and Inbd Vehicle Clear																			
AD1830	(by C03) (UUD9.2) between Inbd Private Car Exam Bldg (033) and Inbd Vehicle Clear																			
AD1840	(by C03) Underground Ducting (UUD3.1) between CUE to Outbd Cargo Exam Bldg (0																			
AD1850	(by C03) (UUD3.2) btw Outbd Car Exam Bldg (023) and Outbd PC Exam Bldg (024) a																			
AD1860	(byC03) (UUD4.1) between Outbd Private Car Exam Bldg (024) and Outbd Vehicle Cle																			
AD1870	(byC03) (UUD5) between Outbd Car Exam Bldg South (023[S]) and Outbd Vehicle Cle																			
AD1880	(by C03) Underground Ducting (UUD8) between CUE and Outbd PCA (032)																			
AD1910	(by C03) Inbound Vehicle Clearance Plaza																			
AD1920	(by C03) Outbound Vehicle Clearance Plaza																			
Interfaces Provisions Mobilization Provisions WA4 Site Erection & Servicing																				

Programme No.: HZMB-DWP Data Date: 14-Aug-15		Hong Kong-Zhuhai-Macao Bridge Hong Kong Boundary Crossing Facilities - Automatic Vehicle Clearance Support System (AVCSS)	Date	Revision	Checked	Approved
			14-Nov-16	Rev.: 0	WC	LC
			10-Mar-17	Rev.: 1.0a	WC	LC
			5-May-17	Rev.: 1.0b	WC	LC

Activity ID	Activity Name	2015												2016				2017				2018				2019		
		Q2	Q3	Q4	Q1	Q2	Q3	Q4	Q1	Q2	Q3	Q4	Q1	Q2	Q3	Q4	Q1	Q2	Q3	Q1	Q2	Q3						
	Detailed Design Specification																											
	Construction Design and Management																											
	Supply/Manufacture Mock-up items																											
	Supply/Manufacture prototypes																											
	Software Design, Coding and Testing																											
	Coding																											
	Software System Inetgration																											
	Prototype & Software Simulation Tests																											
	Procurement - Phase 1 / Section I																											
	Supply/Manufacture products for FAT																											
	Factory Acceptance Test (FAT)																											
	Supply/Manufacture Equipment																											
	Delivery and Bench Acceptance Test for Phase 1/ Section I																											
	Installation - Phase 1 / Section I																											
	Location 1(PCB (001) Basement)																											
EM1920	L1(001)B/F - Cable Laying and termination at Location 1 and Location 2																											
	Location 1(PCB (001) ELV Room (Grid Line E3))																											
EM1940	L1(001)ELV Rm - Cable Laying and termination at Location 1 and Location 2																											
	Location 2(PCB (001) Ground Floor ELV Room (Grid Line E3))																											
EM1960	L2(001)ELV Rm - Cable Laying and termination at Location 1 and Location 2																											
	Location 2(PCB (001) Ground Floor DOH Port Health Control Room (Grid Line BD5))																											
EM1080	L2(001)Heath Ctrl Rm - Cable Laying and termination at Location 1 and Location 2																											
EM1100	L2(001)Heath Ctrl Rm - Cable Splicing and Testing and Labeling																											
EM1120	L2(001)Health Ctrl Rm - Intercom and PA system Installation																											
EM1140	L2(001)Heath Ctrl Rm - Intercom and PA system tuning																											
	Location 2(PCB (001) First Floor Main Server Room)																											
EM1000	L2(001)Main Server Rm - Cable Laying and termination at Location 1 and Location 2																											
EM1020	L2(001)Main Server Rm - Cable Splicing and Testing and Labeling																											
EM1040	L2(001)Main Server Rm - AVCSS Network and Server Installation																											
EM1060	L2(001)Main Server Rm - AVCSS Network and Server Tuning																											
	Location 3(Inbd Cargo Exam Bldg (037) MDF Room)																											
	Location 3(Inbd Cargo Exam Bldg (037) ELV Room)																											
	Location 3(Inbd Cargo Exam Bldg (037) Inspector Offices 128,129,130,131,128,129,141)																											
EM2020	L3(037)Inspec Offices - Cable Laying and termination in Location 3 and Location 3a																											
EM2040	L3(037)Inspec Offices - Cable Splicing and Testing and Labeling																											
EM2060	L3(037)Inspec Offices - AVCSS SURCON WS and 55" LCD Installation																											
EM2080	L3(037)Inspec Offices - VTS WS Installation																											
EM2100	L3(037)Inspec Offices - SURCON and WS Tuning																											
	Location 3(Inbd Cargo Exam Bldg (037) Platform Control Room)																											
EM1160	L3(037)PLF Ctrl Rm - Cable Laying and termination in Location 3 and Location 3a																											
EM1180	L3(037)PLF Ctrl Rm - Cable Splicing and Testing and Labeling																											
EM1200	L3(037)PLF Ctrl Rm - AVCSS SYSCON WS and 55" TV Wall Installation																											
EM1220	L3(037)PLF Ctrl Rm - AVCSS SYSCON WS Tuning																											

01-Sep-17; Installation - Phase 1 / Section I
 22-Jun-17; Location:1(PCB (001);Basement)
 L1(001)B/F - Cable Laying and termination at Location
 22-Jun-17; Location:1(PCB (001);ELV Room (Grid Line
 L1(001)ELV Rm - Cable Laying and termination at Loca
 22-Jun-17; Location:2(PCB (001);Ground Floor ELV R
 L2(001)ELV Rm - Cable Laying and termination at Loca
 18-Aug-17; Location:2(PCB (001);Ground Floor DO
 L2(001)Heath Ctrl Rm - Cable Laying and termination
 L2(001)Heath Ctrl Rm - Cable Splicing and Testing and
 L2(001)Health Ctrl Rm - Intercom and PA system In
 L2(001)Health Ctrl Rm - Intercom and PA system tu
 21-Aug-17; Location:2(PCB (001); First Floor Main
 L2(001)Main Server Rm - Cable Laying and terminatio
 L2(001)Main Server Rm - Cable Splicing and Testing
 L2(001)Main Server Rm - AVCSS Network and Ser
 L2(001)Main Server Rm - AVCSS Network and Se
 07-Aug-17; Location 3(Inbd Cargo Exam Bldg (037)
 L3(037)Inspec Offices - Cable Laying and termination in
 L3(037)Inspec Offices - Cable Splicing and Testing and
 L3(037)Inspec Offices - AVCSS SURCON WS and 5
 L3(037)Inspec Offices - VTS WS Installation
 L3(037)Inspec Offices - SURCON and WS Tuning
 07-Aug-17; Location 3(Inbd Cargo Exam Bldg (037)
 L3(037)PLF Ctrl Rm - Cable Laying and termination in
 L3(037)PLF Ctrl Rm - Cable Splicing and Testing and
 L3(037)PLF Ctrl Rm - AVCSS SYSCON WS and 55
 L3(037)PLF Ctrl Rm - AVCSS SYSCON WS Tuning

Programme No.: HZMB-DWP
 Data Date: 14-Aug-15

- Actual Level of Effort
- Primary Baseline
- Actual Work
- Remaining Work
- Critical Remaining Work
- Baseline Milestone
- Milestone

summary

Hong Kong-Zhuhai-Macao Bridge
 Hong Kong Boundary Crossing
 Facilities - Automatic Vehicle
 Clearance Support System (AVCSS)

Date	Revision	Checked	Approved
14-Nov-16	Rev.: 0	WC	LC
10-Mar-17	Rev.: 1.0a	WC	LC
5-May-17	Rev.: 1.0b	WC	LC

Activity ID	Activity Name	2015			2016				2017				2018				2019		
		Q2	Q3	Q4	Q1	Q2	Q3	Q4	Q1	Q2	Q3	Q4	Q1	Q2	Q3	Q4	Q1	Q2	Q3
Location 3a(Inbd Cargo Exam Bldg (037) ROCARS Room)		<ul style="list-style-type: none"> EM1240 L3a(037) ROCARS Rm - Cable Laying and termination in Location 3 and Location 3a EM1260 L3a(037) ROCARS Rm - Cable Splicing and Testing and Labeling EM1280 L3a(037) ROCARS Rm - AVCSS SYSCON and SURCON and Intercom Installation EM1300 L3a(037) ROCARS Rm - VTS WS Installation EM1320 L3a(037) ROCARS Rm - VID WS Installation EM1340 L3a(037) ROCARS Rm - SURCON and SYSCON and WS Tuning 																	
Location 3a(Inbd Cargo Exam Bldg (037) Main Server Room)		<ul style="list-style-type: none"> EM2120 L3a(037)Main Server Rm - Cable Laying and termination in Location 3 and Location 3a EM2140 L3a(037)Main Server Rm - Cable Splicing and Testing and Labeling EM2160 L3a(037)Main Server Rm - AVCSS Server Installation EM2180 L3a(037)Main Server Rm - VTS Server Installation EM2200 L3a(037)Main Server Rm - Servers Tuning 																	
Location 4(Outbd Cargo Exam Bldg (023) MDF Room)		<ul style="list-style-type: none"> EM2240 L4a(023)ROCARS Rm - Cable Splicing and Testing and Labeling EM2260 L4a(023)ROCARS Rm - AVCSS SYSCON and SURCON and Intercom Installation EM2280 L4a(023)ROCARS Rm - VTS WS Installation EM2300 L4a(023)ROCARS Rm - SYSCON and SURCON and WS Tuning 																	
Location 4a(Outbd Cargo Exam Bldg (023) ROCARS Room)		<ul style="list-style-type: none"> EM2240 L4a(023)ROCARS Rm - Cable Splicing and Testing and Labeling EM2260 L4a(023)ROCARS Rm - AVCSS SYSCON and SURCON and Intercom Installation EM2280 L4a(023)ROCARS Rm - VTS WS Installation EM2300 L4a(023)ROCARS Rm - SYSCON and SURCON and WS Tuning 																	
Location 5(Common Utility Enclosure & Staff Subway)		<ul style="list-style-type: none"> EM2341 L5(CUE) - Cable Laying between Location 5 and Location 6 EM2361 L5(CUE) - Cable Laying between Location 5 and Location 7 EM2380 L5(CUE) - Cable Splicing and Testing and Labeling 																	
Location 6(Common Utility Enclosure & Staff Subway)		<ul style="list-style-type: none"> EM2400 L6(CUE) - Cable Laying between Location 5 and Location 6 EM2420 L6(CUE) - Cable Splicing and Testing and Labeling 																	
Location 7(Common Utility Enclosure & Staff Subway)		<ul style="list-style-type: none"> EM2440 L7(CUE) - Cable Laying between Location 5 and Location 7 EM2460 L7(CUE) - Cable Splicing and Testing and Labeling 																	
Location 12(Inbd Private Car Kiosks,GV Kiosks (027,028,029))		<ul style="list-style-type: none"> Inbd Private Car Kiosks(027) - 9 nos (Phase 1) <ul style="list-style-type: none"> EM1500 L12(027)(9nos P1) - Cable Splicing and Testing and Labeling EM1520 L12(027)(9nos P1) - AVCSS/MOM Kiosk Equipment Installation (9 nos) EM1541 L12(027)(9nos P1) - XDB installation (18 nos) EM1542 L12(027)(9nos P1) - ODB installation (5 nos) EM1543 L12(027)(9nos P1) - ODB installation (2 nos) EM1544 L12(027)(9nos P1) - ODB installation (2 nos) EM1560 L12(027)(9nos P1) - Loop installation (45 nos) Inbd Goods Vehicle Kiosks(028) - 5 nos (Phase 1) <ul style="list-style-type: none"> EM1620 L12(028)(5nos P1) - Cable Laying and termination EM1640 L12(028)(5nos P1) - Cable Splicing and Testing and Labeling EM1660 L12(028)(5nos P1) - AVCSS/MOM Kiosk Equipment Installation (5 nos) EM1681 L12(028)(5nos P1) - XDB installation (10 nos) EM1682 L12(028)(5nos P1) - ODB installation (3 nos) EM1683 L12(028)(5nos P1) - ODB installation (2 nos) 																	

Programme No.: HZMB-DWP Data Date: 14-Aug-15		Hong Kong-Zhuhai-Macao Bridge Hong Kong Boundary Crossing Facilities - Automatic Vehicle Clearance Support System (AVCSS)	Date	Revision	Checked	Approved
			14-Nov-16	Rev.: 0	WC	LC
			10-Mar-17	Rev.: 1.0a	WC	LC
			5-May-17	Rev.: 1.0b	WC	LC

Activity ID	Activity Name	2015			2016				2017				2018				2019		
		Q2	Q3	Q4	Q1	Q2	Q3	Q4	Q1	Q2	Q3	Q4	Q1	Q2	Q3	Q4	Q1	Q2	Q3
Outbd Vehicle Clearance Plaza - 8 nos VID, 6 nos VTS, 4 nos TLS		<ul style="list-style-type: none"> EM3160 Outbound VID cabling from pillar box to VID field equipment EM3180 Outbound VTS cabling from pillar box to VTS field equipment EM3200 Outbound TLS cabling from pillar box to TLS field equipment EM3220 Outbound VID field equipment installation (8 VID) EM3240 Outbound VTS field equipment installation (3 RFID + 3 Cameras) EM3260 Outbound TLS field equipment installation (4 TLS) EM3280 Outbound VID and VTS and TLS field equipment tuning 																	
Underground Ducting (UUD1.1) between CUE and Inbd Cargo Exam Bldg (037)		<ul style="list-style-type: none"> UD1000 (UUD1.1 [CUE-037]) - Cable laying and termination 																	
(UUD1.2) between Inbd Cargo Exam Bldg South (037[S]) and DOH Cargo Clearance Bldg (037[S])		<ul style="list-style-type: none"> UD1060 (UUD1.2 [037[S]-043]) - Cable laying and termination 																	
Underground Ducting (UUD6) between CUE and Shuttle Bus Kiosk (006) and Inbd Private Car Exam Bldg (033)		<ul style="list-style-type: none"> UD1040 (UUD9.1 [037[S]-033-100] - Cable laying and termination 																	
(UUD9.1) btw IB Cargo Exam Bldg South(037[S]) & IB PC Exam Bldg(033) & IB Traffic Control Bldg (033)		<ul style="list-style-type: none"> UD1010 (UUD2 [037[N]-IB VCP]) - Cable laying and termination 																	
(UUD2) between Inbd Cargo Exam Bldg North (037[N]) to Inbd VCP		<ul style="list-style-type: none"> UD1070 (UUD9.3 [033-IB VCP[W]) - Cable laying and termination 																	
(UUD9.3) between Inbd Private Car Exam Bldg (033) and Inbd Vehicle Clearance Plaza		<ul style="list-style-type: none"> UD1020 (UUD9.2 [033-IB VCP[E]) - Cable laying and termination 																	
(UUD9.2) between Inbd Private Car Exam Bldg (033) and Inbd Vehicle Clearance Plaza		<ul style="list-style-type: none"> UD1030 (UUD3.1 [CUE-023]) - Cable laying and termination 																	
Underground Ducting (UUD7) between PCB(001) and Inbd Coach Kiosks(010)		<ul style="list-style-type: none"> UD1050 (UUD3.2 [023-024-101]) - Cable laying and termination 																	
(UUD3.2) btw OB Car Exam Bldg(023) & OB PC Exam Bldg(024) & OB Traffic Control Bldg (023)		<ul style="list-style-type: none"> UD1100 (UUD8 [CUE-032]) - Cable laying and termination 																	
Underground Ducting (UUD8) between CUE and Outbd PCA (032)		<ul style="list-style-type: none"> UD1080 (UUD4.1 [024-OB VCP]) - Cable laying and termination 																	
(UUD4.1) between Outbd PC Exam Bldg (024) and Outbd Vehicle Clearance Plaza		<ul style="list-style-type: none"> UD1090 (UUD5 [023[S]-OB VCP]) - Cable laying and termination 																	
(UUD5) between Outbd Car Exam Bldg (023[S]) and Outbd Vehicle Clearance Plaza		<ul style="list-style-type: none"> UD1090 (UUD5 [023[S]-OB VCP]) - Cable laying and termination 																	
Initial On-Site Test and Commissioning / Pre-SAT (Phase 1 / Section I)																			
Site Acceptance Test (Phase 1 / Section I)																			
Security Risk Assessment and Audit																			
Operability Period Test (Phase 1 / Section I)																			
Completion (Phase 1 /Section I)																			
Training and Document (Phase 1 /Section I)																			
Operation (Phase 1 /Section I)																			
Engineering Support for Phase 1 / Section I																			
Procurement - Phase 2 / Section II																			
Delivery and Bench Acceptance Test for Phase 2/Section II																			
Installation - Phase 2 / Section II		<ul style="list-style-type: none"> 30-Aug-17: Installation -Phase 2/ Section II 																	

Programme No.: HZMB-DWP
Data Date: 14-Aug-15

- Actual Level of Effort
- Primary Baseline
- Actual Work
- Remaining Work
- Critical Remaining Work
- Baseline Milestone
- Milestone
- summary

Hong Kong-Zhuhai-Macao Bridge
Hong Kong Boundary Crossing
Facilities - Automatic Vehicle
Clearance Support System (AVCSS)

Date	Revision	Checked	Approved
14-Nov-16	Rev.: 0	WC	LC
10-Mar-17	Rev.: 1.0a	WC	LC
5-May-17	Rev.: 1.0b	WC	LC

Activity ID	Activity Name	2015												2016				2017				2018				2019		
		Q2	Q3	Q4	Q1	Q2	Q3	Q4	Q1	Q2	Q3	Q4	Q1	Q2	Q3	Q4	Q1	Q2	Q3	Q1	Q2	Q3						
Location 8(Inbd Private Car Annex (025)) (Phase 2)		30-Aug-17; Location 8(Inbd Private Car Annex (025)) (Phase 2)																										
EM3370	L8(025) - Cable Containment in Kiosks	L8(025) - Cable Containment in Kiosks																										
EM3380	L8(025) - Cable Laying and termination	L8(025) - Cable Laying and termination																										
EM3400	L8(025) - Cable Splicing and Testing and Labeling	L8(025) - Cable Splicing and Testing and Labeling																										
Location 9(Outbd Private Car Annex (032)) (Phase 2)		30-Aug-17; Location 9(Outbd Private Car Annex (032)) (Phase 2)																										
EM3500	L9(032) - Cable Containment in Kiosks	L9(032) - Cable Containment in Kiosks																										
EM3520	L9(032) - Cable Laying and termination	L9(032) - Cable Laying and termination																										
Initial On-Site Test and Commissioning / Pre-SAT (Phase 2 / Section II)																												
Site Acceptance Test (Phase 2 / Section II)																												
Operability Period Test (Phase 2 / Section II)																												
Completion (Phase 2 / Section II)																												
Engineering Support for Phase 2 / Section II																												
Procurement for Phase2 / Section III																												
Delivery and Bench Acceptance Test for Phase2 / Section III																												
Installation - Phase 2 / Section III		09-Oct-17; Installation - Phase 2/ Section III																										
Location 10,11,12,13 (Vehicle Clearance Kiosks)		09-Oct-17; Location 10,11,12,13 (Vehicle Clearance Kiosks)																										
Location 12 Inbd Private Car Kiosks (027) - 12 nos (Phase 2)		09-Oct-17; Location 12 Inbd Private Car Kiosks																										
EM4440	L12(027)(12nos P2) - Cable Laying and termination	L12(027)(12nos P2) - Cable Laying and termination																										
EM4460	L12(027)(12nos P2) - Cable Splicing and Testing and Labeling	L12(027)(12nos P2) - Cable Splicing and Testing and Labeling																										
EM4480	L12(027)(12nos P2) - AVCSS/DOH/MOM Kiosk Equipment Installation (12 nos)	L12(027)(12nos P2) - AVCSS/DOH/MOM Kiosk Equipment Installation (12 nos)																										
Location 13 Outbd Private Car Kiosks (030) - 12 nos (Phase 2)		01-Sep-17; Location 13 Outbd Private Car Kiosks																										
EM4560	L13(030)(12nos P2) - Cable Containment in Kiosks	L13(030)(12nos P2) - Cable Containment in Kiosks																										
Location 12 Outbd Goods Vehicle Kiosks (029) - 3 nos (Phase 2)		31-Aug-17; Location 12 Outbd Goods Vehicle Kiosks																										
EM4880	L12(029)(3nos P2) - Cable Laying and termination	L12(029)(3nos P2) - Cable Laying and termination																										
EM4900	L12(029)(3nos P2) - Cable Splicing and Testing and Labeling	L12(029)(3nos P2) - Cable Splicing and Testing and Labeling																										
EM4920	L12(029)(3nos P2) - AVCSS/DOH/MOM Kiosk Equipment Installation (3 nos)	L12(029)(3nos P2) - AVCSS/DOH/MOM Kiosk Equipment Installation (3 nos)																										
EM4940	L12(029)(3nos P2) - ODB & XDB Installation (3 nos)	L12(029)(3nos P2) - ODB & XDB Installation (3 nos)																										
EM4960	L12(029)(3nos P2) - AIOP Installation (3 nos)	L12(029)(3nos P2) - AIOP Installation (3 nos)																										
EM4980	L12(029)(3nos P2) - Loop Installation (15 nos)	L12(029)(3nos P2) - Loop Installation (15 nos)																										
Location 11 Outbd Coach Kiosks (009) - 4 nos (Phase 2)																												
Location 12 Inbd Goods Vehicle Kiosks (028) - 3 nos (Phase 2)		24-Aug-17; Location 12 Inbd Goods Vehicle Kiosks																										
EM4720	L12(028)(3nos P2) - Cable Laying and termination	L12(028)(3nos P2) - Cable Laying and termination																										
EM4740	L12(028)(3nos P2) - Cable Splicing and Testing and Labeling	L12(028)(3nos P2) - Cable Splicing and Testing and Labeling																										
EM4760	L12(028)(3nos P2) - AVCSS/DOH/MOM Kiosk Equipment Installation (3 nos)	L12(028)(3nos P2) - AVCSS/DOH/MOM Kiosk Equipment Installation (3 nos)																										
EM4780	L12(028)(3nos P2) - ODB & XDB Installation (3 nos)	L12(028)(3nos P2) - ODB & XDB Installation (3 nos)																										
EM4800	L12(028)(3nos P2) - AIOP Installation (3 nos)	L12(028)(3nos P2) - AIOP Installation (3 nos)																										
EM4820	L12(028)(3nos P2) - Loop Installation (15 nos)	L12(028)(3nos P2) - Loop Installation (15 nos)																										
EM4840	L12(028)(3nos P2) - Kiosk Equipment Configuration (3 nos)	L12(028)(3nos P2) - Kiosk Equipment Configuration (3 nos)																										
EM5120	L12(028)(3nos P2) - Inbd Goods Vehicle Kiosks Installation Complete	L12(028)(3nos P2) - Inbd Goods Vehicle Kiosks Installation Complete																										
Location 10 Shuttle Bus Kiosks (006) - 4 nos (Phase 2)		30-Aug-17; Location 10 Shuttle Bus Kiosks (006) -																										
EM4000	L10(006)(4nos P2) - Cable Containment in Kiosks	L10(006)(4nos P2) - Cable Containment in Kiosks																										
Location 11 Inbd Coach Kiosks (010) - 2 nos (Phase 2)-1																												
Location 11 Inbd Coach Kiosks (010) - 2 nos (Phase 2)-2																												
Initial On-Site Test and Commissioning / Pre-SAT (Phase 2 / Section III)																												

Programme No.: HZMB-DWP Data Date: 14-Aug-15		Hong Kong-Zhuhai-Macao Bridge Hong Kong Boundary Crossing Facilities - Automatic Vehicle Clearance Support System (AVCSS)	Date	Revision	Checked	Approved
			14-Nov-16	Rev.: 0	WC	LC
			10-Mar-17	Rev.: 1.0a	WC	LC
			5-May-17	Rev.: 1.0b	WC	LC

Activity ID	Activity Name	2015												2016				2017				2018				2019		
		Q2	Q3	Q4	Q1	Q2	Q3	Q4	Q1	Q2	Q3	Q4	Q1	Q2	Q3	Q4	Q1	Q2	Q3	Q1	Q2	Q3						
	Site Acceptance Test (Phase 2 / Section III)																											
	Operability Period Test (Phase 2 / Section III)																											
	Completion (Phase 2 / Section III)																											
	Operation (Phase 2 / Section III)																											
	Defect Liability Period (DLP)																											
	Document Submission (Phase 2 / Section III)																											

Programme No.: HZMB-DWP
Data Date: 14-Aug-15

- Actual Level of Effort summary
- Primary Baseline
- Actual Work
- Remaining Work
- Critical Remaining Work
- Baseline Milestone
- Milestone

Hong Kong-Zhuhai-Macao Bridge
Hong Kong Boundary Crossing
Facilities - Automatic Vehicle
Clearance Support System (AVCSS)

Date	Revision	Checked	Approved
14-Nov-16	Rev.: 0	WC	LC
10-Mar-17	Rev.: 1.0a	WC	LC
5-May-17	Rev.: 1.0b	WC	LC