

| Activity ID | Activity Name | February 2018 | | | | March 2018 | | | | April 2018 | | | |
|--------------------------------------|---|---------------|----|----|----|------------|----|----|----|------------|----|----|----|
| | | 04 | 11 | 18 | 25 | 04 | 11 | 18 | 25 | 01 | 08 | 15 | 22 |
| Fire Service Inspections | | | | | | | | | | | | | |
| FSD1000 | Complete FS defects from 1st Inspection | | | | | | | | | | | | |
| FSD1010 | FS taskforce inspections | | | | | | | | | | | | |
| FSD1020 | Additional works - AVAS systems | | | | | | | | | | | | |
| FSD1030 | Additional works - BSMT AHU Room Detectors | | | | | | | | | | | | |
| FSD1035 | Additional works - Probe detectors (AHU Plantroom) | | | | | | | | | | | | |
| FSD1040 | Final FS rehearsal tests/make ready for FS re inspection | | | | | | | | | | | | |
| FSD1050 | Request FS re-inspection (excluding EVA + SFH) | | | | | | | | | | | | |
| FSD1055 | FS Review Period | | | | | | | | | | | | |
| FSD1060 | FS reinspection(s) (excluding EVA+SFH) | | | | | | | | | | | | |
| FSD1071 | FS reinspection for EVA+SFH | | | | | | | | | | | | |
| FSD1072 | EVA & SFH completion including FS Inspection | | | | | | | | | | | | |
| FSD1080 | FS Issue fire certification | | | | | | | | | | | | |
| FSD1090 | TPIDC/AP/RSE Inspection | | | | | | | | | | | | |
| FSD1100 | OP Obtained | | | | | | | | | | | | |
| FSD1110 | Complete o/s items during Maintenance Period | | | | | | | | | | | | |
| Cabins | | | | | | | | | | | | | |
| Cabin J | | | | | | | | | | | | | |
| Cabin G | | | | | | | | | | | | | |
| Ground Floor | | | | | | | | | | | | | |
| A25352 | Works to Degree 3 Completion | | | | | | | | | | | | |
| A25352a | Works to Degree 3 Completion - FSD Ready degree 3 | | | | | | | | | | | | |
| A25382 | Public Toilets Completion | | | | | | | | | | | | |
| Mezzanine Floor | | | | | | | | | | | | | |
| A25353 | Works to Degree 3 Completion | | | | | | | | | | | | |
| A25353a | Works to Degree 3 Completion - FSD Ready degree 3 | | | | | | | | | | | | |
| A25383 | BOH Toilets Completion | | | | | | | | | | | | |
| First Floor | | | | | | | | | | | | | |
| A25370 | Works to Degree 3 Completion | | | | | | | | | | | | |
| A25370a | Works to Degree 3 Completion - FSD Ready degree 3 | | | | | | | | | | | | |
| A25380 | Public Toilets Completion | | | | | | | | | | | | |
| A25390 | BOH Toilets Completion | | | | | | | | | | | | |
| Builders Works : Cabin G Roof | | | | | | | | | | | | | |
| A24820 | Cabin screens & louver | | | | | | | | | | | | |
| A24820a | Cabin screens & louver : Delivery and install remaining Colt louver | | | | | | | | | | | | |
| A24850 | Builders Work : Cabin Roof - Cabin G remaining works (W/P, SCR & Tiles) | | | | | | | | | | | | |
| A25615 | Parapet cladding and handrails | | | | | | | | | | | | |
| MEP Works : Cabins G Roof | | | | | | | | | | | | | |
| A25260 | MEP : Cabin Roof (Cabin G) - Completion inc Smoke extractor, exhaust fan, split systems, p | | | | | | | | | | | | |
| Cabin D | | | | | | | | | | | | | |
| Ground Floor | | | | | | | | | | | | | |
| A25355 | Works to Degree 3 Completion | | | | | | | | | | | | |
| A25355a | Works to Degree 3 Completion - FSD Ready degree 3 | | | | | | | | | | | | |
| A25355 | BOH Toilets Completion | | | | | | | | | | | | |
| Mezzanine Floor | | | | | | | | | | | | | |
| A25356 | Works to Degree 3 Completion | | | | | | | | | | | | |
| A25356a | Works to Degree 3 Completion - FSD Ready degree 3 | | | | | | | | | | | | |
| A25376 | BOH Toilets Completion | | | | | | | | | | | | |

Remaining Level of Effort
 Remaining Work
 Milestone

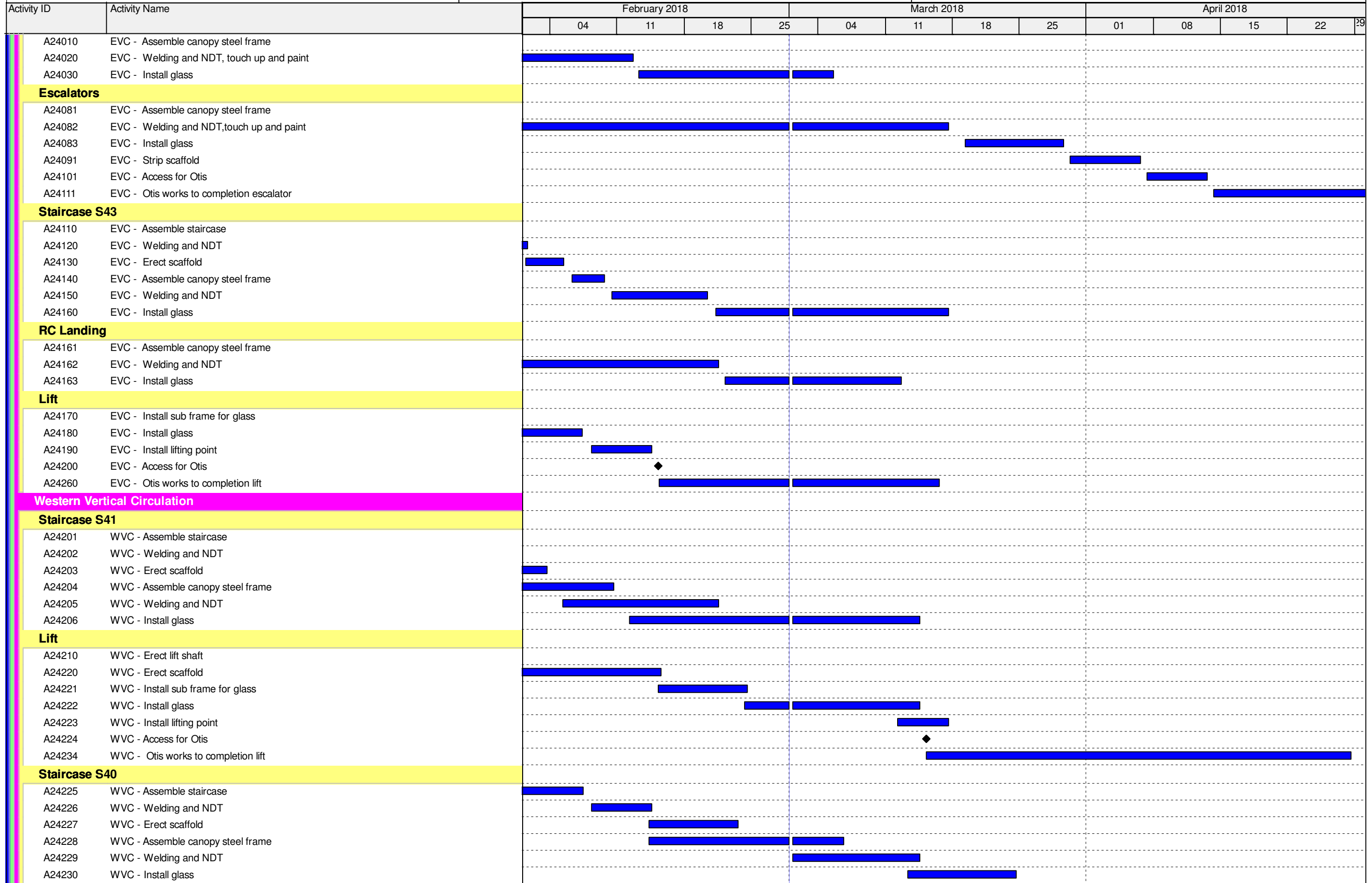
Actual Work
 Critical Remaining Work

| Activity ID | Activity Name | February 2018 | | | | March 2018 | | | | April 2018 | | | |
|--------------------------------------|---|---------------|----|----|----|------------|----|----|----|------------|----|----|----|
| | | 04 | 11 | 18 | 25 | 04 | 11 | 18 | 25 | 01 | 08 | 15 | 22 |
| First Floor | | | | | | | | | | | | | |
| A25371 | Works to Degree 3 Completion | | | | | | | | | | | | |
| A25371a | Works to Degree 3 Completion - FSD Ready degree 3 | | | | | | | | | | | | |
| A25391 | BOH Toilets Completion | | | | | | | | | | | | |
| Builders Works : Cabin D Roof | | | | | | | | | | | | | |
| A24860 | Builders Work : Cabin Roof - Cabin D remaining works (W/P, SCR & Tiles) | | | | | | | | | | | | |
| A26152 | Cabin screens & louver | | | | | | | | | | | | |
| A26152a | Cabin screens & louver : Delivery and install remaining Colt louver | | | | | | | | | | | | |
| A26153 | Parapet cladding and handrails | | | | | | | | | | | | |
| MEP Works : Cabins D Roof | | | | | | | | | | | | | |
| A24974 | MEP : Cabin Roof (Cabin D) - Completion inc Smoke extractor, exhaust fan, split systems, p | | | | | | | | | | | | |
| Cabin E | | | | | | | | | | | | | |
| Ground Floor | | | | | | | | | | | | | |
| A25358 | Works to Degree 3 Completion | | | | | | | | | | | | |
| A25358a | Works to Degree 3 Completion - FSD Ready degree 3 | | | | | | | | | | | | |
| A25388 | BOH Toilets Completion | | | | | | | | | | | | |
| Mezzanine Floor | | | | | | | | | | | | | |
| A25359 | Works to Degree 3 Completion | | | | | | | | | | | | |
| A25359a | Works to Degree 3 Completion - FSD Ready degree 3 | | | | | | | | | | | | |
| A25409 | BOH Toilets Completion | | | | | | | | | | | | |
| First Floor | | | | | | | | | | | | | |
| A25372 | Works to Degree 3 Completion | | | | | | | | | | | | |
| A25372a | Works to Degree 3 Completion - FSD Ready degree 3 | | | | | | | | | | | | |
| A25412 | BOH Toilets Completion | | | | | | | | | | | | |
| Cabin F | | | | | | | | | | | | | |
| Ground Floor | | | | | | | | | | | | | |
| A25361 | Works to Degree 3 Completion | | | | | | | | | | | | |
| A25361a | Works to Degree 3 Completion - FSD Ready degree 3 | | | | | | | | | | | | |
| A25411 | BOH Toilets Completion | | | | | | | | | | | | |
| Mezzanine Floor | | | | | | | | | | | | | |
| A25362 | Works to Degree 3 Completion | | | | | | | | | | | | |
| A25372a2 | Works to Degree 3 Completion - FSD Ready degree 3 | | | | | | | | | | | | |
| A25432 | BOH Toilets Completion | | | | | | | | | | | | |
| First Floor | | | | | | | | | | | | | |
| A25373 | Works to Degree 3 Completion | | | | | | | | | | | | |
| A25373a | Works to Degree 3 Completion - FSD Ready degree 3 | | | | | | | | | | | | |
| A25393 | BOH Toilets Completion | | | | | | | | | | | | |
| Builders Works : Cabin F Roof | | | | | | | | | | | | | |
| A25685 | Builders Work : Cabin Roof - Cabin F remaining works (W/P, SCR & Tiles) | | | | | | | | | | | | |
| A26154 | Cabin screens & louver | | | | | | | | | | | | |
| A26154a | Cabin screens & louver : Delivery and install remaining Colt louver | | | | | | | | | | | | |
| A26155 | Parapet cladding and handrails | | | | | | | | | | | | |
| MEP Works : Cabins F Roof | | | | | | | | | | | | | |
| A26105 | MEP : Cabin Roof (Cabin F) - Completion inc Smoke extractor, exhaust fan, split systems, p | | | | | | | | | | | | |
| Cabin A | | | | | | | | | | | | | |
| Ground Floor | | | | | | | | | | | | | |
| A25364 | Works to Degree 3 Completion | | | | | | | | | | | | |
| A25364a | Works to Degree 3 Completion - FSD Ready degree 3 | | | | | | | | | | | | |
| A25384 | Public Toilets Completion | | | | | | | | | | | | |

Remaining Level of Effort
 Remaining Work
 Milestone
 Actual Work
 Critical Remaining Work

| Activity ID | Activity Name | February 2018 | | | | March 2018 | | | | April 2018 | | | |
|--------------------------------------|---|--|----|----|----|------------|----|----|----|------------|----|----|----|
| | | 04 | 11 | 18 | 25 | 04 | 11 | 18 | 25 | 01 | 08 | 15 | 22 |
| A25394 | BOH Toilets Completion | | | | | | | | | | | | |
| Mezzanine Floor | | | | | | | | | | | | | |
| A25365 | Works to Degree 3 Completion | | | | | | | | | | | | |
| A25365a | Works to Degree 3 Completion - FSD Ready degree 3 | | | | | | | | | | | | |
| A25555 | BOH Toilets Completion | | | | | | | | | | | | |
| First Floor | | | | | | | | | | | | | |
| A25374 | Works to Degree 3 Completion | | | | | | | | | | | | |
| A25374a | Works to Degree 3 Completion - FSD Ready degree 3 | | | | | | | | | | | | |
| A25404 | Public Toilets Completion | | | | | | | | | | | | |
| A25414 | BOH Toilets Completion | | | | | | | | | | | | |
| Builders Works : Cabin A Roof | | | | | | | | | | | | | |
| A24870 | Builders Work : Cabin Roof - Cabin A remaining works (W/P, SCR & Tiles) | | | | | | | | | | | | |
| A26156 | Cabin screens & louver | | | | | | | | | | | | |
| A26156a | Cabin screens & louver : Delivery and install remaining Colt louver | | | | | | | | | | | | |
| A26157 | Parapet cladding and handrails | | | | | | | | | | | | |
| MEP Works : Cabins A Roof | | | | | | | | | | | | | |
| A24967 | MEP : Cabin Roof (Cabin A) - Completion inc Smoke extractor, exhaust fan, split systems, p | | | | | | | | | | | | |
| Cabin C | | | | | | | | | | | | | |
| Ground Floor | | | | | | | | | | | | | |
| A25367 | Works to Degree 3 Completion | | | | | | | | | | | | |
| A25367a | Works to Degree 3 Completion - FSD Ready degree 3 | | | | | | | | | | | | |
| A25377 | Public Toilets Completion | | | | | | | | | | | | |
| A25387 | BOH Toilets Completion | | | | | | | | | | | | |
| Mezzanine Floor | | | | | | | | | | | | | |
| A25368 | Works to Degree 3 Completion | | | | | | | | | | | | |
| A25368a | Works to Degree 3 Completion - FSD Ready degree 3 | | | | | | | | | | | | |
| A25408 | BOH Toilets Completion | | | | | | | | | | | | |
| First Floor | | | | | | | | | | | | | |
| A25375 | Works to Degree 3 Completion | | | | | | | | | | | | |
| A25375a | Works to Degree 3 Completion - FSD Ready degree 3 | | | | | | | | | | | | |
| A25565 | Public Toilets Completion | | | | | | | | | | | | |
| A25575 | BOH Toilets Completion | | | | | | | | | | | | |
| Builders Works : Cabin C Roof | | | | | | | | | | | | | |
| A25695 | Builders Work : Cabin Roof - Cabin C remaining works (W/P, SCR & Tiles) | | | | | | | | | | | | |
| A26158 | Cabin screens & louver | | | | | | | | | | | | |
| A26158a | Cabin screens & louver : Delivery and install remaining Colt louver | | | | | | | | | | | | |
| A26159 | Parapet cladding and handrails | | | | | | | | | | | | |
| MEP Works : Cabins C Roof | | | | | | | | | | | | | |
| A26115 | MEP : Cabin Roof (Cabin C) - Completion inc Smoke extractor, exhaust fan, split systems, p | | | | | | | | | | | | |
| Balustrade | | | | | | | | | | | | | |
| Internal | | | | | | | | | | | | | |
| A24990 | Balustrade - Installation of remaining panels | | | | | | | | | | | | |
| Footbridges | | | | | | | | | | | | | |
| A25030 | Balustrade - Installation of remaining panels and posts | | | | | | | | | | | | |
| A25381 | Balustrade - North footbridge Balustrade | Connection to C3 PTI mound design detail pending | | | | | | | | | | | |
| A25401 | Balustrade - Painting of footbridge | Access problem due to hall road & EVA paving works | | | | | | | | | | | |
| Vertical Circulation | | | | | | | | | | | | | |
| Eastern Vertical Circulation | | | | | | | | | | | | | |
| Staircase S42 | | | | | | | | | | | | | |

Remaining Level of Effort
 Remaining Work
 Milestone
 Actual Work
 Critical Remaining Work



Remaining Level of Effort
 Remaining Work
 Actual Work
 Critical Remaining Work
 Milestone

| Activity ID | Activity Name | February 2018 | | | | March 2018 | | | | April 2018 | | | | |
|-----------------------------|--|---------------|----|----|----|------------|----|----|----|------------|----|----|----|---|
| | | 04 | 11 | 18 | 25 | 04 | 11 | 18 | 25 | 01 | 08 | 15 | 22 | |
| RC Landing | | | | | | | | | | | | | | |
| A24240 | WVC - Erect scaffold | | | | ■ | ■ | | | | | | | | |
| A24241 | WVC - Assemble canopy steel frame | | | | | ■ | ■ | ■ | | | | | | |
| A24242 | WVC - Welding and NDT | | | | | | ■ | ■ | ■ | | | | | |
| A24243 | WVC - Install glass | | | | | | | ■ | ■ | ■ | | | | |
| External Staircases | | | | | | | | | | | | | | |
| West | | | | | | | | | | | | | | |
| A16660 | External Stairs - Erect Steel Staircase (balustrade / hand rail / screeding) | ■ | | | | | | | | | | | | |
| A16750 | External Stairs - Erect Steel Staircase (all remaining non FSD works) | ■ | ■ | ■ | ■ | ■ | ■ | ■ | ■ | | | | | |
| East | | | | | | | | | | | | | | |
| A16860 | External Stairs - Erect Steel Staircase (balustrade / hand rail / screeding) | ■ | | | | | | | | | | | | |
| A16870 | External Stairs - Erect Steel Staircase (all remaining non FSD works) | ■ | ■ | ■ | ■ | ■ | ■ | ■ | ■ | | | | | |
| Covered Walkway | | | | | | | | | | | | | | |
| South | | | | | | | | | | | | | | |
| Type 1A (West) | | | | | | | | | | | | | | |
| A16669 | Covered walkway Sth (west) - Footing Redesign Issued | | | | | | | | | | | | | |
| A16670 | Covered walkway Sth (west) - Welding and NDT | ■ | ■ | ■ | ■ | ■ | ■ | ■ | ■ | | | | | |
| A16800 | Covered walkway Sth (west) - Install gutter and glass | ■ | ■ | ■ | ■ | ■ | ■ | ■ | ■ | | | | | |
| Type 3A (West) | | | | | | | | | | | | | | |
| A23600 | Covered walkway Sth (west) - Removal of Workers containers compound | ■ | | | | | | | | | | | | |
| A23610 | Covered walkway Sth (west) - Erect scaffold and assemble steel frame | | ■ | ■ | ■ | ■ | ■ | ■ | ■ | | | | | |
| A23631 | Covered walkway Sth (west) - Welding and NDT | | | ■ | ■ | ■ | ■ | ■ | ■ | ■ | ■ | ■ | ■ | ■ |
| A23632 | Covered walkway Sth (west) - Install gutter and glass | | | | | | | ■ | ■ | ■ | ■ | ■ | ■ | ■ |
| Type 3 (West) | | | | | | | | | | | | | | |
| A23633 | Covered walkway Sth (west) - Removal of workers containers compound | ■ | | | | | | | | | | | | |
| A23634 | Covered walkway Sth (west) - Erect scaffold and assemble steel frame | ■ | ■ | ■ | ■ | ■ | ■ | ■ | ■ | ■ | ■ | ■ | ■ | ■ |
| A23635 | Covered walkway Sth (west) - Welding and NDT | | ■ | ■ | ■ | ■ | ■ | ■ | ■ | ■ | ■ | ■ | ■ | ■ |
| A23636 | Covered walkway Sth (west) - Install gutter and glass | | | | | | | ■ | ■ | ■ | ■ | ■ | ■ | ■ |
| Type 1A East | | | | | | | | | | | | | | |
| A23637 | Covered walkway Sth (east) - Welding and NDT | ■ | ■ | ■ | ■ | ■ | ■ | ■ | ■ | ■ | ■ | ■ | ■ | ■ |
| A23638 | Covered walkway Sth (east) - Install gutter and glass | ■ | ■ | ■ | ■ | ■ | ■ | ■ | ■ | ■ | ■ | ■ | ■ | ■ |
| Type 3 (East) | | | | | | | | | | | | | | |
| A23639 | Covered walkway Sth (east) - Erect scaffold and assemble steel frame | ■ | ■ | ■ | ■ | ■ | ■ | ■ | ■ | ■ | ■ | ■ | ■ | ■ |
| A23640 | Covered walkway Sth (east) - Welding and NDT | ■ | ■ | ■ | ■ | ■ | ■ | ■ | ■ | ■ | ■ | ■ | ■ | ■ |
| A23641 | Covered walkway Sth (east) - Install gutter and glass | ■ | ■ | ■ | ■ | ■ | ■ | ■ | ■ | ■ | ■ | ■ | ■ | ■ |
| North | | | | | | | | | | | | | | |
| Type 1A (North East) | | | | | | | | | | | | | | |
| A16680 | Covered walkway Nth (east) - Complete drainage works and divert haul road | ■ | ■ | ■ | ■ | ■ | ■ | ■ | ■ | ■ | ■ | ■ | ■ | ■ |
| A16810 | Covered walkway Nth (east) - Construct footing and backfill | ■ | ■ | ■ | ■ | ■ | ■ | ■ | ■ | ■ | ■ | ■ | ■ | ■ |
| A23650 | Covered walkway Nth (east) - Erect scaffold and assemble steel frame | | | | ■ | ■ | ■ | ■ | ■ | ■ | ■ | ■ | ■ | ■ |
| A23660 | Covered walkway Nth (east) - Welding and NDT | | | | | | ■ | ■ | ■ | ■ | ■ | ■ | ■ | ■ |
| A23670 | Covered walkway Nth (east) - Install gutter and glass | | | | | | | ■ | ■ | ■ | ■ | ■ | ■ | ■ |
| A26290 | Covered walkway Nth (east) - Installation of remaining paving | | | | | | | | | ■ | ■ | ■ | ■ | ■ |
| Type 1A (South East) | | | | | | | | | | | | | | |
| A23671 | Covered walkway Nth (east) - Complete design for footing (by Aecom) | | | | | | | | | | | | | |
| A23671a | Covered walkway Nth (east) - Relocate storage containers | | | | | | | | | | | | | |
| A23672 | Covered walkway Nth (east) - Construct footing and backfill | ■ | ■ | ■ | ■ | ■ | ■ | ■ | ■ | ■ | ■ | ■ | ■ | ■ |
| A23673 | Covered walkway Nth (east) - Erect scaffold and assemble steel frame | | ■ | ■ | ■ | ■ | ■ | ■ | ■ | ■ | ■ | ■ | ■ | ■ |
| A23674 | Covered walkway Nth (east) - Welding and NDT | | | | ■ | ■ | ■ | ■ | ■ | ■ | ■ | ■ | ■ | ■ |

Remaining Level of Effort
 Remaining Work
 Milestone

Actual Work
 Critical Remaining Work

| Activity ID | Activity Name | February 2018 | | | | March 2018 | | | | April 2018 | | | |
|--------------------------------------|---|---------------|----|----|----|------------|----|----|----|------------|----|----|----|
| | | 04 | 11 | 18 | 25 | 04 | 11 | 18 | 25 | 01 | 08 | 15 | 22 |
| A23675 | Covered walkway Nth (east) - Install gutter and glass | | | | | | | | | | | | |
| A26676 | Covered walkway Nth (east) - Installation of remaining paving | | | | | | | | | | | | |
| Type 1A (West) | | | | | | | | | | | | | |
| A23690 | Covered walkway Nth (west) - Vacate bus stop area | | | | | | | | | | | | |
| A23691 | Covered walkway Nth (west) - Divert site access / Haul road | | | | | | | | | | | | |
| A23700 | Covered walkway Nth (west) - Construct footing and backfill (Stage 1) | | | | | | | | | | | | |
| A23720 | Covered walkway Nth (west) - Construct footing and backfill (Stage 2) | | | | | | | | | | | | |
| A23721 | Covered walkway Nth (west) - Erect scaffold and assemble steel frame | | | | | | | | | | | | |
| A23722 | Covered walkway Nth (west) - Welding and NDT | | | | | | | | | | | | |
| A23723 | Covered walkway Nth (west) - Install gutter and glass | | | | | | | | | | | | |
| A26280 | Covered walkway Nth (west) - Installation of remaining paving | | | | | | | | | | | | |
| Smoke Vent and Delivery Hatch | | | | | | | | | | | | | |
| Smoke Vent | | | | | | | | | | | | | |
| A18420 | Smoke Vent - Remove covers | | | | | | | | | | | | |
| A18430 | Smoke Vent - Pull out test | | | | | | | | | | | | |
| A18450 | Smoke Vent - Remove temp weld for steel frame | | | | | | | | | | | | |
| A18460 | Smoke Vent - FRP for steel frame | | | | | | | | | | | | |
| A18470 | Smoke Vent - Rubber seal | | | | | | | | | | | | |
| A18480 | Smoke Vent - Install covers | | | | | | | | | | | | |
| A18490 | Smoke Vent - Apply waterproofing selant | | | | | | | | | | | | |
| A25385 | Smoke Vent - Remove covers | | | | | | | | | | | | |
| A25395 | Smoke Vent - Pull out test | | | | | | | | | | | | |
| A25405 | Smoke Vent - Remove temp weld for steel frame | | | | | | | | | | | | |
| A25415 | Smoke Vent - FRP for steel frame | | | | | | | | | | | | |
| A25425 | Smoke Vent - Rubber seal | | | | | | | | | | | | |
| A25435 | Smoke Vent - Install covers | | | | | | | | | | | | |
| A25445 | Smoke Vent - Apply waterproofing selant | | | | | | | | | | | | |
| Delivery Hatches | | | | | | | | | | | | | |
| A18400 | Delivery Hatch - All equipment removed from basement | | | | | | | | | | | | |
| A18410 | Delivery Hatch - Install steel frame | | | | | | | | | | | | |
| A23724 | Delivery Hatch - FRP for steel frame | | | | | | | | | | | | |
| A23725 | Delivery Hatch - Rubber seal | | | | | | | | | | | | |
| A23726 | Delivery Hatch - Install covers | | | | | | | | | | | | |
| A23727 | Delivery Hatch - Apply waterproofing selant | | | | | | | | | | | | |
| A25455 | Delivery Hatch - All equipment removed from basement | | | | | | | | | | | | |
| A25465 | Delivery Hatch - Install steel frame | | | | | | | | | | | | |
| A25475 | Delivery Hatch - FRP for steel frame | | | | | | | | | | | | |
| A25485 | Delivery Hatch - Rubber seal | | | | | | | | | | | | |
| A25495 | Delivery Hatch - Install covers | | | | | | | | | | | | |
| A25505 | Delivery Hatch - Apply waterproofing selant | | | | | | | | | | | | |
| SDO Deck Works | | | | | | | | | | | | | |
| EVA and Stage 1 | | | | | | | | | | | | | |
| PCB-16-2170 | SDO Deck - Carriageway | | | | | | | | | | | | |
| PCB-16-2180 | SDO Deck - Road kerb and concrete backing | | | | | | | | | | | | |
| PCB-16-550 | SDO Deck - Flat channel and gullies | | | | | | | | | | | | |
| PCB-16-770 | SDO Deck - Install street furniture | | | | | | | | | | | | |
| PCB-16-850 | SDO Deck - Granite paver all areas | | | | | | | | | | | | |
| PCB-16-910 | SDO Deck - Movement Joint for footbridges | | | | | | | | | | | | |
| Stage 2 (DOD North West) | | | | | | | | | | | | | |
| PCB-05-1530 | SDO Deck - Remove subbie's containers | | | | | | | | | | | | |

Remaining Level of Effort
 Remaining Work
 Milestone

Actual Work
 Critical Remaining Work

| Activity ID | Activity Name | February 2018 | | | | March 2018 | | | | April 2018 | | | |
|--|---|---------------|----|----|----|------------|----|----|----|---|----|----|----|
| | | 04 | 11 | 18 | 25 | 04 | 11 | 18 | 25 | 01 | 08 | 15 | 22 |
| PCB-05-1540 | SDO Deck - Install covered walkway | [Bar] | | | | [Bar] | | | | | | | |
| PCB-16-2181 | SDO Deck - Carriageway | [Bar] | | | | | | | | | | | |
| PCB-16-2182 | SDO Deck - Road kerb and concrete backing | | | | | [Bar] | | | | | | | |
| PCB-16-2184 | SDO Deck - Install street furniture | | | | | [Bar] | | | | | | | |
| Stage 3 (DOD South West) | | | | | | | | | | | | | |
| PCB-05-2111 | SDO Deck - Remove subbie's containers | [Bar] | | | | | | | | | | | |
| PCB-05-2112 | SDO Deck - Install covered walkway | [Bar] | | | | [Bar] | | | | | | | |
| PCB-16-2186 | SDO Deck - Carriageway | [Bar] | | | | | | | | | | | |
| PCB-16-2187 | SDO Deck - Road kerb and concrete backing | | | | | [Bar] | | | | | | | |
| PCB-16-2188 | SDO Deck - Install street furniture | | | | | [Bar] | | | | | | | |
| Stage 4 (DOD East) | | | | | | | | | | | | | |
| PCB-05-2113 | SDO Deck - Relocate JV's containers | [Bar] | | | | | | | | | | | |
| PCB-16-2190 | SDO Deck - Carriageway | [Bar] | | | | | | | | | | | |
| PCB-16-2191 | SDO Deck - Road kerb and concrete backing | | | | | [Bar] | | | | | | | |
| PCB-16-2192 | SDO Deck - Install street furniture | | | | | [Bar] | | | | | | | |
| Movement Joint | | | | | | | | | | | | | |
| A23960 | SDO Deck - Acceptance of quotation | | | | | | | | | | | | |
| A23970 | SDO Deck - Design submission | | | | | | | | | | | | |
| A23980 | SDO Deck - Design approval | | | | | | | | | | | | |
| A23990 | SDO Deck - Fabrication and delivery (1st Batch) | [Bar] | | | | [Bar] | | | | 17 Weeks | | | |
| A23990a | SDO Deck - Delivery of 2nd Batch | | | | | | | | | [Bar] 17 Weeks | | | |
| A24000 | SDO Deck - movement joint Installation | | | | | | | | | [Bar] | | | |
| Underside of Drop Off Deck MEP & ABWF Programme | | | | | | | | | | | | | |
| Scaffolding | | | | | | | | | | | | | |
| Erect Scaffolding | | | | | | | | | | | | | |
| A24250 | Underside DOD - Commence Scaffolding | | | | | | | | | | | | |
| Bay 1 (01-03) | | | | | | | | | | | | | |
| A24350 | Underside DOD - Cable containment | [Bar] | | | | [Bar] | | | | Require sufficient area hadover to enable works to progress | | | |
| A24360 | Underside DOD - Surface conduit - C1 (Lgt) | [Bar] | | | | [Bar] | | | | | | | |
| A24370 | Underside DOD - Surface conduit - C3 (ELV) | [Bar] | | | | [Bar] | | | | | | | |
| A24380 | Underside DOD - Lgt wiring work, flex conduit & Lgt panels (C1 Lgt) | [Bar] | | | | [Bar] | | | | | | | |
| A24390 | Underside DOD - ELV wiring work, flex conduit & Lgt panels (C3 ELV) | [Bar] | | | | [Bar] | | | | | | | |
| A24400 | Underside DOD - ABWF - Ceiling fixing (Bracket & Grids) - fit out | [Bar] | | | | [Bar] | | | | | | | |
| A24410 | Underside DOD - ABWF - Ceiling panel (close ceiling & device cut out) - fit out | | | | | [Bar] | | | | [Bar] | | | |
| A24420 | Underside DOD - Lighting - final fix- C1 (Lgt) | | | | | [Bar] | | | | [Bar] | | | |
| A24430 | Underside DOD - ELV - Final fix - C3 (ELV) | | | | | [Bar] | | | | [Bar] | | | |
| A24440 | Underside DOD - Drainage pipe installation | [Bar] | | | | | | | | | | | |
| Bay 2 (04-06) | | | | | | | | | | | | | |
| A24441 | Underside DOD - Cable containment | [Bar] | | | | [Bar] | | | | | | | |
| A24442 | Underside DOD - Surface conduit - C1 (Lgt) | [Bar] | | | | [Bar] | | | | | | | |
| A24443 | Underside DOD - Surface conduit - C3 (ELV) | [Bar] | | | | [Bar] | | | | | | | |
| A24444 | Underside DOD - Lgt wiring work, flex conduit & Lgt panels (C1 Lgt) | [Bar] | | | | [Bar] | | | | | | | |
| A24445 | Underside DOD - ELV wiring work, flex conduit & Lgt panels (C3 ELV) | [Bar] | | | | [Bar] | | | | | | | |
| A24446 | Underside DOD - ABWF - Ceiling fixing (Bracket & Grids) - fit out | [Bar] | | | | [Bar] | | | | | | | |
| A24447 | Underside DOD - ABWF - Ceiling panel (close ceiling & device cut out) - fit out | | | | | [Bar] | | | | [Bar] | | | |
| A24448 | Underside DOD - Lighting - final fix- C1 (Lgt) | | | | | [Bar] | | | | [Bar] | | | |
| A24449 | Underside DOD - ELV - Final fix - C3 (ELV) | | | | | [Bar] | | | | [Bar] Dependency | | | |
| A24450 | Underside DOD - Drainage pipe installation | [Bar] | | | | | | | | | | | |
| Bay 3 (07-09) | | | | | | | | | | | | | |
| A24451 | Underside DOD - Cable containment | [Bar] | | | | [Bar] | | | | | | | |

Remaining Level of Effort
 Remaining Work
 Critical Remaining Work
 Milestone

| Activity ID | Activity Name | February 2018 | | | | March 2018 | | | | April 2018 | | | |
|--------------------------|--|---------------|----|----|----|------------|----|----|----|------------|----|----|----|
| | | 04 | 11 | 18 | 25 | 04 | 11 | 18 | 25 | 01 | 08 | 15 | 22 |
| A24452 | Underside DOD - Surface conduit - C1 (Lgt) | [Bar] | | | | | | | | | | | |
| A24453 | Underside DOD - Surface conduit - C3 (ELV) | [Bar] | | | | Dependency | | | | | | | |
| A24454 | Underside DOD - Lgt wiring work, flex conduit & Lgt panels (C1 Lgt) | [Bar] | | | | [Bar] | | | | | | | |
| A24455 | Underside DOD - ELV wiring work, flex conduit & Lgt panels (C3 ELV) | [Bar] | | | | Dependency | | | | | | | |
| A24456 | Underside DOD - ABWF - Ceiling fixing (Bracket & Grids) - fit out | [Bar] | | | | [Bar] | | | | | | | |
| A24457 | Underside DOD - ABWF - Ceiling panel (close ceiling & device cut out) - fit out | [Bar] | | | | [Bar] | | | | | | | |
| A24458 | Underside DOD - Lighting - final fix- C1 (Lgt) | [Bar] | | | | [Bar] | | | | | | | |
| A24459 | Underside DOD - ELV - Final fix - C3 (ELV) | [Bar] | | | | Dependency | | | | | | | |
| A24460 | Underside DOD - Drainage pipe installation | [Bar] | | | | | | | | | | | |
| Bay 4 (10-12) | | | | | | | | | | | | | |
| A24461 | Underside DOD - Cable containment | [Bar] | | | | | | | | | | | |
| A24462 | Underside DOD - Surface conduit - C1 (Lgt) | [Bar] | | | | | | | | | | | |
| A24463 | Underside DOD - Surface conduit - C3 (ELV) | [Bar] | | | | Dependency | | | | | | | |
| A24464 | Underside DOD - Lgt wiring work, flex conduit & Lgt panels (C1 Lgt) | [Bar] | | | | | | | | | | | |
| A24465 | Underside DOD - ELV wiring work, flex conduit & Lgt panels (C3 ELV) | [Bar] | | | | Dependency | | | | | | | |
| A24466 | Underside DOD - ABWF - Ceiling fixing (Bracket & Grids) - fit out | [Bar] | | | | [Bar] | | | | | | | |
| A24467 | Underside DOD - ABWF - Ceiling panel (close ceiling & device cut out) - fit out | [Bar] | | | | [Bar] | | | | | | | |
| A24468 | Underside DOD - Lighting - final fix- C1 (Lgt) | [Bar] | | | | [Bar] | | | | | | | |
| A24469 | Underside DOD - ELV - Final fix - C3 (ELV) | [Bar] | | | | Dependency | | | | | | | |
| A24470 | Underside DOD - Drainage pipe installation | [Bar] | | | | | | | | | | | |
| Bay 5 (13-140) | | | | | | | | | | | | | |
| A24471 | Underside DOD - Cable containment | [Bar] | | | | | | | | | | | |
| A24472 | Underside DOD - Surface conduit - C1 (Lgt) | [Bar] | | | | | | | | | | | |
| A24473 | Underside DOD - Surface conduit - C3 (ELV) | [Bar] | | | | Dependency | | | | | | | |
| A24474 | Underside DOD - Lgt wiring work, flex conduit & Lgt panels (C1 Lgt) | [Bar] | | | | | | | | | | | |
| A24475 | Underside DOD - ELV wiring work, flex conduit & Lgt panels (C3 ELV) | [Bar] | | | | Dependency | | | | | | | |
| A24476 | Underside DOD - ABWF - Ceiling fixing (Bracket & Grids) - fit out | [Bar] | | | | [Bar] | | | | | | | |
| A24477 | Underside DOD - ABWF - Ceiling panel (close ceiling & device cut out) - fit out | [Bar] | | | | [Bar] | | | | | | | |
| A24478 | Underside DOD - Lighting - final fix- C1 (Lgt) | [Bar] | | | | [Bar] | | | | | | | |
| A24479 | Underside DOD - ELV - Final fix - C3 (ELV) | [Bar] | | | | Dependency | | | | | | | |
| A24480 | Underside DOD - Drainage pipe installation | [Bar] | | | | | | | | | | | |
| Facade | | | | | | | | | | | | | |
| Type A / B Facade | | | | | | | | | | | | | |
| A23490 | Type A/B North - All caulking, sealing, alignment and MJS. Installation of all couplers | [Bar] | | | | [Bar] | | | | [Bar] | | | |
| A25515 | Type A/B South - All caulking, sealing, alignment and MJS. Installation of all couplers | [Bar] | | | | [Bar] | | | | [Bar] | | | |
| A25705 | Type A/B West - All caulking, sealing, alignment and MJS. Installation of all couplers | [Bar] | | | | [Bar] | | | | [Bar] | | | |
| A25715 | Type A/B East - All caulking, sealing, alignment and MJS. Installation of all couplers | [Bar] | | | | [Bar] | | | | [Bar] | | | |
| Type C Facade | | | | | | | | | | | | | |
| A23510 | Type C East - All finishing works on cabin glass, panels, doors, internal and external defects | [Bar] | | | | [Bar] | | | | [Bar] | | | |
| A25725 | Type D West - All finishing works on cabin glass, panels, doors, internal and external defects | [Bar] | | | | [Bar] | | | | [Bar] | | | |
| Type D Facade | | | | | | | | | | | | | |
| A23530 | Type D East - Complete all outstanding works | [Bar] | | | | [Bar] | | | | [Bar] | | | |
| A25735 | Type D West - Complete all outstanding works | [Bar] | | | | [Bar] | | | | [Bar] | | | |
| Cabin Roofs | | | | | | | | | | | | | |
| A23550 | Internal stainless steel balustrade and upstand wall capping / cladding | [Bar] | | | | [Bar] | | | | [Bar] | | | |
| A23580 | External upstand wall capping / cladding | [Bar] | | | | [Bar] | | | | [Bar] | | | |
| A23590 | Cabin screens and louvres | [Bar] | | | | [Bar] | | | | [Bar] | | | |
| Sunshades | | | | | | | | | | | | | |
| A23560 | Cabins C1(Zone G) | [Bar] | | | | [Bar] | | | | [Bar] | | | |
| A23570 | Cabins C2(Zone D) | [Bar] | | | | [Bar] | | | | [Bar] | | | |

Remaining Level of Effort
 Remaining Work
 Actual Work
 Critical Remaining Work
 Milestone

| Activity ID | Activity Name | February 2018 | | | | March 2018 | | | | April 2018 | | | |
|--|--|---------------|----|----|----|------------|----|----|----|------------|----|----|----|
| | | 04 | 11 | 18 | 25 | 04 | 11 | 18 | 25 | 01 | 08 | 15 | 22 |
| A25745 | Cabins C4(Zone J) | | | | | | | | | | | | |
| A25755 | Cabins C3(Zone A) | | | | | | | | | | | | |
| A25765 | Cabins C5(Zone F) | | | | | | | | | | | | |
| A25775 | Cabins C6(Zone C) | | | | | | | | | | | | |
| Refuse Collection Building | | | | | | | | | | | | | |
| Ready For FSD Inspection | | | | | | | | | | | | | |
| PCB-06-100 | RSMRC - Remaining MEP Works for FSD | | | | | | | | | | | | |
| PCB-06-110 | RSMRC - Target ready for FSD | | | | | | | | | | | | |
| FSD Inspection Period | | | | | | | | | | | | | |
| PCB-06-1020 | RSMRC - FSD Inspection Period | | | | | | | | | | | | |
| Remaining ABWF & BS / MEP / E&M Works | | | | | | | | | | | | | |
| PCB-06-1029 | Resolve refuse building tile selection - Lead Time | | | | | | | | | | | | |
| PCB-06-1030 | RSMRC - Dismantle and reassemble fitout works after FSD inspection | | | | | | | | | | | | |
| Testing and Commissioning | | | | | | | | | | | | | |
| PCB-06-1112 | RSMRC - T&C, Final Inspection | | | | | | | | | | | | |
| Public Toilets | | | | | | | | | | | | | |
| RC Structures | | | | | | | | | | | | | |
| PCB-04-100 | External Toilet Blocks - Cast in drainage works | | | | | | | | | | | | |
| PCB-04-110 | External Toilet Blocks - Floor slab | | | | | | | | | | | | |
| PCB-04-120 | External Toilet Blocks - Wall and roof slab | | | | | | | | | | | | |
| PCB-04-130 | External Toilet Blocks - Curing | | | | | | | | | | | | |
| PCB-04-140 | External Toilet Blocks - Strip formwork and falsework | | | | | | | | | | | | |
| ABWF Works | | | | | | | | | | | | | |
| PCB-04-150 | External Toilet Blocks - ABWF fit out works | | | | | | | | | | | | |
| PCB-04-160 | External Toilet Blocks - ABWF Ceiling close up and final Fix | | | | | | | | | | | | |
| MEP | | | | | | | | | | | | | |
| PCB-04-1500 | External Toilet Blocks - MEP fit out works | | | | | | | | | | | | |
| PCB-04-1510 | MEP Final Fix post Ceiling closure | | | | | | | | | | | | |
| Roof | | | | | | | | | | | | | |
| A23730 | Skylight | | | | | | | | | | | | |
| External Works | | | | | | | | | | | | | |
| PCB - East | | | | | | | | | | | | | |
| A23740 | External Works (East) - Surface channel, road kerb and black top (wearing layer) | | | | | | | | | | | | |
| A23760 | External Works (East) - Concrete carparks | | | | | | | | | | | | |
| A23770 | External Works (East) - Paving blocks | | | | | | | | | | | | |
| A23780 | External Works (East) - Street lights and furnitures | | | | | | | | | | | | |
| A26145 | External Works (East) - Courtyard area finishes and MEP | | | | | | | | | | | | |
| A26145a | External Works (East) - Courtyard area and MOE - FSD Ready | | | | | | | | | | | | |
| PCB - West | | | | | | | | | | | | | |
| A23790 | External Works (West) - Road kerb and black top (wearing layer) | | | | | | | | | | | | |
| A23800 | External Works (West) - Concrete carparks | | | | | | | | | | | | |
| A23820 | External Works (West) - Paving blocks | | | | | | | | | | | | |
| A23830 | External Works (West) - Street lights and furnitures | | | | | | | | | | | | |
| A24040 | External Works (West) - Drainage & backfill to Public Toilet block | | | | | | | | | | | | |
| A26143 | External Works (West) - Courtyard area finishes and MEP | | | | | | | | | | | | |
| A26183 | External Works (West) - Courtyard area and MOE - FSD Ready | | | | | | | | | | | | |
| PCB - North (Under Row 5) | | | | | | | | | | | | | |
| A23840 | External Works (North) - Drainage and water mains | | | | | | | | | | | | |
| A23850 | External Works (North) - Road kerbs and sub-base | | | | | | | | | | | | |

Remaining Level of Effort
 Remaining Work
 Milestone
 Actual Work
 Critical Remaining Work

| Activity ID | Activity Name | February 2018 | | | | March 2018 | | | | April 2018 | | | |
|---|--|------------------|----|----|----|------------------|----|----|----|---|----|----|----|
| | | 04 | 11 | 18 | 25 | 04 | 11 | 18 | 25 | 01 | 08 | 15 | 22 |
| A23860 | External Works (North) - Concrete carriageway | [Remaining Work] | | | | [Remaining Work] | | | | | | | |
| A23870 | External Works (North) - Street lights and furnitures | | | | | [Remaining Work] | | | | | | | |
| A23880 | External Works (North) - Paving blocks | [Actual Work] | | | | [Remaining Work] | | | | | | | |
| PCB - Site entrance area and northern end (North West) | | | | | | | | | | | | | |
| A23890 | External Works (North Site Entrance) - Drainage | [Remaining Work] | | | | | | | | | | | |
| A23900 | External Works (North Site Entrance) - Water mains to C2 connection & WSD inspection | | | | | | | | | | | | |
| A23910 | External Works (North Site Entrance) - Relocate entrance compound | | | | | | | | | | | | |
| A23920 | External Works (North Site Entrance) - Bus stop road kerb and concrete carriageway | [Remaining Work] | | | | [Remaining Work] | | | | [Remaining Work] | | | |
| A23930 | External Works (North Site Entrance) - Street lights and furnitures | [Remaining Work] | | | | [Remaining Work] | | | | [Remaining Work] | | | |
| A23940 | External Works (North Site Entrance) - Road kerb & subbase along northern road | [Remaining Work] | | | | | | | | | | | |
| A23950 | External Works (North Site Entrance) - Blacktop along northern road | [Remaining Work] | | | | | | | | | | | |
| High Level Works (Baffle/AL6) | | | | | | | | | | | | | |
| Baffles and AL6 | | | | | | | | | | | | | |
| AL6 Panels | | | | | | | | | | | | | |
| A24590 | Installation of AL6 panels | [Remaining Work] | | | | [Remaining Work] | | | | AL6 panels programme linked to hanging scaffold removal | | | |
| North | | | | | | | | | | | | | |
| A25331 | Complete installation of remaining 1131 no baffles | [Remaining Work] | | | | [Remaining Work] | | | | | | | |
| South | | | | | | | | | | | | | |
| A25330 | Complete installation of remaining 1154 no baffles | [Remaining Work] | | | | [Remaining Work] | | | | | | | |
| West | | | | | | | | | | | | | |
| A25500 | Complete Installation of remaining Baffles West | [Remaining Work] | | | | | | | | | | | |
| A25610 | Siphonics connection to SS downpipe | | | | | | | | | | | | |
| East | | | | | | | | | | | | | |
| A25785 | Complete Installation of remaining Baffles East | [Remaining Work] | | | | | | | | | | | |
| Internal Baffle | | | | | | | | | | | | | |
| A25334 | Internal Baffle - Install at Central Column @ Zone E | [Remaining Work] | | | | | | | | | | | |
| A25354 | Internal Baffle - Remaining baffle | [Remaining Work] | | | | | | | | | | | |
| Roof Cladding & Glazing | | | | | | | | | | | | | |
| A25280 | Cladding panels delivered from Germany | | | | | | | | | | | | |
| A25290 | Installation of panels | [Remaining Work] | | | | | | | | | | | |
| A25300 | Roof completion works inc balance of works, redial, glazing, flashing & water test | [Remaining Work] | | | | [Remaining Work] | | | | Fixing Leaks & o/s defects | | | |
| Roof Drainage North & South | | | | | | | | | | | | | |
| Drainage | | | | | | | | | | | | | |
| A24490 | Siphonic drainage PCB building | | | | | | | | | | | | |
| A24500 | Grav Pipe South - Concrete works in drop off deck H/O to roof team | | | | | | | | | | | | |
| A24510 | Grav Pipe South - Gravity pipe at Megacol completion | [Remaining Work] | | | | | | | | | | | |
| A24520 | Grav Pipe South - Works ready for South Megacolumns to start | | | | | ◆ | | | | | | | |
| A24530 | Grav Pipe South - Final connections | | | | | [Remaining Work] | | | | Kin Wing | | | |
| A24540 | Grav Pipe North - Excavation works in North area ready for roof team | | | | | | | | | | | | |
| A24550 | Grav Pipe North - Gravity pipe at Megacol completion | [Remaining Work] | | | | [Remaining Work] | | | | Need access to R5 P7,P9 | | | |
| A24560 | Grav Pipe North - Works ready for North Megacolumns to start | | | | | | | | | ◆ | | | |
| A24570 | Grav Pipe North - Final connections | | | | | | | | | [Remaining Work] | | | |
| Cabin E Roof | | | | | | | | | | | | | |
| A24960 | Cabin E Roof - MEP Wiring | | | | | | | | | | | | |
| A24970 | Cabin E Roof - Blockwork | [Remaining Work] | | | | | | | | | | | |
| A24980 | Cabin E Roof - Service Column Cladding | [Remaining Work] | | | | | | | | | | | |
| A25000 | Cabin E Roof - Mass Concrete | [Remaining Work] | | | | [Remaining Work] | | | | | | | |
| A26270 | Cabin E Roof - Checker Plate | | | | | | | | | [Remaining Work] | | | |
| Guard Booths | | | | | | | | | | | | | |

| Activity ID | Activity Name | February 2018 | | | | March 2018 | | | | April 2018 | | | | |
|---------------------------------|---|---------------|---------------|----|---------------|--|----|----|---------------|---|----|---------------|---|--|
| | | 04 | 11 | 18 | 25 | 04 | 11 | 18 | 25 | 01 | 08 | 15 | 22 | |
| A25020 | Guard Booths DOD - Delivery Frame 1 Nos | [Actual Work] | | | | | | | | | | | | |
| A25100 | Guard Booths DOD - Delivery Frame 2 Nos | [Actual Work] | | | | | | | | | | | | |
| A25110 | Guard Booths DOD - Install 3 Nos Guard Booths frame and cladding | | [Actual Work] | | | [Actual Work] | | | | | | | | |
| A25120 | Guard Booths DOD - ABWF/MEP Works | | | | [Actual Work] | [Actual Work] | | | | | | | | |
| A25130 | Guard Booths DOD - T&C | | | | | | | | [Actual Work] | | | | | |
| A25220 | Guard Booths North External - Delivery Frame with cladding | [Actual Work] | | | | | | | | | | | | |
| A25230 | Guard Booths North External - Install 3 Nos Guard Booths frame and cladding | | [Actual Work] | | | [Actual Work] | | | | | | | | |
| A25240 | Guard Booths North External - ABWF/MEP Works | | | | [Actual Work] | [Actual Work] | | | | | | | | |
| A25240a | Guard Booths North External - ABWF/MEP Works - FSD Ready | | | | [Actual Work] | [Actual Work] | | | | | | | | |
| A25240b | Guard Booths North External - ABWF/MEP Works - Remaining | | | | | | | | [Actual Work] | | | | | |
| A25250 | Guard Booths North External - T&C | | | | | | | | [Actual Work] | | | | | |
| Front of House | | | | | | | | | | | | | | |
| A26180 | FOH - Final Cleaning - Ground Floor | | | | | | | | | | | [Actual Work] | | |
| A26190 | FOH - Final Cleaning - First Floor | | | | | | | | | | | [Actual Work] | | |
| Kiosks & Booths | | | | | | | | | | | | | | |
| Ground Floor | | | | | | | | | | | | | | |
| A26050 | Kiosks & Booths - Observation and Intermediate Office Booth | [Actual Work] | | | | [Actual Work] | | | | | | | | |
| A26060 | Kiosks & Booths - Type 2A Kiosk - Retail | [Actual Work] | | | | [Actual Work] | | | | | | | | |
| A26062 | Kiosks & Booths - Type 3 Kiosk - Ticket Counters (2no) | [Actual Work] | | | | [Actual Work] | | | | | | | | |
| A26064 | Kiosks & Booths - Type 4A Kiosk - F&B (2no) | [Actual Work] | | | | [Actual Work] | | | | | | | | |
| A26065 | Kiosks & Booths - Type 1A Kiosk - Retail (10no) | [Actual Work] | | | | [Actual Work] | | | | | | | | |
| A26067 | Kiosks & Booths - Immigration Booths (26no) | [Actual Work] | | | | [Actual Work] | | | | | | | | |
| A26069 | Kiosks & Booths - Health Screening Station (4no) | [Actual Work] | | | | [Actual Work] | | | | | | | | |
| A26146 | Kiosks & Booths - MEP & C3 access for works | [Actual Work] | | | | | | | | | | | | |
| A26147 | Kiosks & Booths - Final fixes and alignment works | | | | | | | | | | | | [Actual Work] Does not include vendor signage | |
| First Floor | | | | | | | | | | | | | | |
| A26051 | Kiosks & Booths - Observation Booth and Intermediate Office Booth | [Actual Work] | | | | [Actual Work] | | | | | | | | |
| A26061 | Kiosks & Booths - Type 2B Kiosk - Retail | [Actual Work] | | | | [Actual Work] | | | | | | | | |
| A26063 | Kiosks & Booths - Type 3 Kiosk - Ticket Counters (4no) | [Actual Work] | | | | [Actual Work] | | | | | | | | |
| A26066 | Kiosks & Booths - Type 1B Kiosk - Retail (10no) | [Actual Work] | | | | [Actual Work] | | | | | | | | |
| A26068 | Kiosks & Booths - Immigration Booths (26no) | [Actual Work] | | | | [Actual Work] | | | | | | | | |
| A26070 | Kiosks & Booths - Health Screening Station (4no) | [Actual Work] | | | | [Actual Work] | | | | | | | | |
| A26148 | Kiosks & Booths - MEP & C3 access for works | [Actual Work] | | | | | | | | | | | | |
| A26149 | Kiosks & Booths - Final fixes and alignment works | | | | | | | | | | | | [Actual Work] Does not include vendor signage | |
| Ceilings | | | | | | | | | | | | | | |
| A26230 | Ceiling Type CP2 & CP3 - G/F FOH | [Actual Work] | | | | [Actual Work] | | | | | | | | |
| A26260 | Ceiling Type CP2 & CP3 - G/F FOH - replace damage panel to ceiling | | | | | | | | | | | | [Actual Work] | |
| Tensile Barrier | | | | | | | | | | | | | | |
| A26240 | Tensile Barrier - G/F | [Actual Work] | | | | [Actual Work] | | | | | | | | |
| A26250 | Tensile Barrier - 1/F | [Actual Work] | | | | [Actual Work] | | | | | | | | |
| Red & Green Channels | | | | | | | | | | | | | | |
| Ground Floor | | | | | | | | | | | | | | |
| A26137 | Red & Green Channel - Building Steel / Glazing | [Actual Work] | | | | [Actual Work] | | | | [Actual Work] Last batch glass 23/3+10d | | | | |
| A26137a | Red & Green Channel - Hanging TV frames | | [Actual Work] | | | [Actual Work] | | | | | | | | |
| A26138 | Red & Green Channel - Critical Room - ABWF | [Actual Work] | | | | [Actual Work] | | | | | | | | |
| A26139 | Red & Green Channel - Critical Room - MEP | [Actual Work] | | | | [Actual Work] | | | | | | | | |
| A26140 | Red & Green Channel - Other Room - MEP | | | | [Actual Work] | [Actual Work] New VO + C3 hatches | | | | | | | | |
| A26141 | Red & Green Channel - Other Room - ABWF | | | | [Actual Work] | [Actual Work] shutter (Chung Tai Issue) shash wind. remake | | | | | | | | |
| First Floor | | | | | | | | | | | | | | |

| Activity ID | Activity Name | February 2018 | | | | March 2018 | | | | April 2018 | | | |
|--|---|--|----|----|----|------------|----|----|----|------------|----|----|----|
| | | 04 | 11 | 18 | 25 | 04 | 11 | 18 | 25 | 01 | 08 | 15 | 22 |
| A26132 | Red & Green Channel - Building Steel / Glazing | [Gantt bar: Feb 04 to Mar 25] | | | | | | | | | | | |
| A26133 | Red & Green Channel - Critical Room - ABWF | [Gantt bar: Feb 04 to Mar 25] | | | | | | | | | | | |
| A26134 | Red & Green Channel - Other Room - MEP | [Gantt bar: Feb 18 to Mar 18] | | | | | | | | | | | |
| A26135 | Red & Green Channel - Other Room - ABWF | [Gantt bar: Feb 25 to Mar 11] | | | | | | | | | | | |
| A26136 | Red & Green Channel - Critical Room - MEP | [Gantt bar: Feb 04 to Mar 25] | | | | | | | | | | | |
| Genset Building | | | | | | | | | | | | | |
| A25550 | Genset Building - Remaining works | [Gantt bar: Feb 04 to Mar 18] | | | | | | | | | | | |
| Seawater Pump House | | | | | | | | | | | | | |
| A25360 | SWPH - Remaining works | [Gantt bar: Feb 04 to Mar 18] | | | | | | | | | | | |
| Water Features | | | | | | | | | | | | | |
| Internal | | | | | | | | | | | | | |
| North - Row 4 | | | | | | | | | | | | | |
| A26200 | Water Feature - Row 4 Remaining Works | [Gantt bar: Feb 04 to Feb 04] | | | | | | | | | | | |
| Middle - Rows 2 & 3 | | | | | | | | | | | | | |
| A26210 | Water Feature - Rows 2&3 Remaining Works | [Gantt bar: Feb 04 to Feb 18] | | | | | | | | | | | |
| South - Row 1 | | | | | | | | | | | | | |
| A26220 | Water Feature - Row 1 Remaining Works | [Gantt bar: Feb 04 to Feb 25] | | | | | | | | | | | |
| External | | | | | | | | | | | | | |
| A25340 | External Water Feature Works - West | [Gantt bar: Feb 04 to Mar 11] | | | | | | | | | | | |
| A25340A | External Water Feature Works - West T&C | [Gantt bar: Feb 04 to Mar 11] | | | | | | | | | | | |
| A26025 | External Water Feature Works - East | [Gantt bar: Feb 04 to Mar 11] | | | | | | | | | | | |
| A26025A | External Water Feature Works - East T&C | [Gantt bar: Feb 04 to Mar 11] | | | | | | | | | | | |
| A26035 | External Water Feature Works - South | [Gantt bar: Feb 04 to Mar 11] | | | | | | | | | | | |
| A26035A | External Water Feature Works - South T&C | [Gantt bar: Feb 04 to Mar 11] | | | | | | | | | | | |
| A26045 | External Water Feature Works - North | [Gantt bar: Feb 04 to Feb 25] | | | | | | | | | | | |
| A26045A | External Water Feature Works - North T&C | [Gantt bar: Feb 25 to Mar 11] | | | | | | | | | | | |
| Electrical Systems | | | | | | | | | | | | | |
| CLP Tx Power & LV Sub-mains Power-On | | | | | | | | | | | | | |
| EL1000 | C3 handover for Remaining External Cable Duct Routes | | | | | | | | | | | | |
| EL1010 | Complete Balance of Submains Cabling to External Areas incl C2 & C3 areas | [Gantt bar: Feb 04 to Mar 18] Still pulling to some C3 buildings | | | | | | | | | | | |
| EL1020 | Progressively Energise Outgoing Circuits from LV switchboards - External Areas incl C2&C3 | [Gantt bar: Feb 04 to Mar 18] | | | | | | | | | | | |
| EL1030 | LV Switchboards - Final Interfacing T&C with SCADA system | [Gantt bar: Feb 18 to Mar 18] | | | | | | | | | | | |
| Electrical Sub-mains Installation & Final Distribution | | | | | | | | | | | | | |
| EL1040 | Complete Installation CBS Lighting Control for Emergency FS Lighting (26 no. sets): | | | | | | | | | | | | |
| EL1050 | Final T&C: CBS Lighting Control fo FS Related Lighting Installations | [Gantt bar: Feb 04 to Feb 04] | | | | | | | | | | | |
| EL1060 | SCADA Interfacing with CBS and Final T&C | [Gantt bar: Feb 04 to Mar 25] | | | | | | | | | | | |
| Lighting and Small Power | | | | | | | | | | | | | |
| Basement Electrical Rooms & Final Circuits Power On | | | | | | | | | | | | | |
| EL1070 | Non-FS: Lighting & Small Power Final Circuit Testing / Progressive Switch Lights On | [Gantt bar: Feb 04 to Feb 04] | | | | | | | | | | | |
| EL1080 | Non-FS : Lighting & Small Power - Final Lighting Control T&C and Lux Level Checks | [Gantt bar: Feb 04 to Mar 25] | | | | | | | | | | | |
| Cabin A to G Electrical Rooms & Final Circuits Power On | | | | | | | | | | | | | |
| EL1090 | Non-FS: Lighting & Small Power Final Circuit Testing / Progressive Switch Lights On | [Gantt bar: Feb 04 to Feb 04] | | | | | | | | | | | |
| EL1100 | Non-FS : Lighting & Small Power - Final Lighting Control T&C and Lux Level Checks | [Gantt bar: Feb 25 to Mar 25] | | | | | | | | | | | |
| G/F FOH Lighting & Small Power Final Circuits Power On | | | | | | | | | | | | | |
| EL1110 | Non-FS: Lighting & Small Power Final Circuit Testing / Progressive Switch Lights On | [Gantt bar: Feb 04 to Mar 18] | | | | | | | | | | | |
| EL1120 | Non-FS : Lighting & Small Power - Final Lighting Control T&C and Lux Level Checks | [Gantt bar: Feb 25 to Mar 25] | | | | | | | | | | | |
| 1/F FOH Lighting & Small Power Final Circuits Power On | | | | | | | | | | | | | |
| EL1130 | Non-FS: Lighting & Small Power Final Circuit Testing / Progressive Switch Lights On | [Gantt bar: Feb 04 to Mar 18] | | | | | | | | | | | |

Remaining Level of Effort
 Remaining Work
 Milestone
 Actual Work
 Critical Remaining Work

| Activity ID | Activity Name | February 2018 | | | | March 2018 | | | | April 2018 | | | |
|--|--|---------------|----|----|----|---------------|----|----|----|------------|----|----|----|
| | | 04 | 11 | 18 | 25 | 04 | 11 | 18 | 25 | 01 | 08 | 15 | 22 |
| EL1140 | Non-FS : Lighting & Small Power - Final Lighting Control T&C and Lux Level Checks | [Actual Work] | | | | [Actual Work] | | | | | | | |
| UPS Systems - Final T&C: | | | | | | | | | | | | | |
| EL1150 | Full Load Test and Functional T&C | | | | | | | | | | | | |
| EL1160 | Interfacing with SCADA | | | | | | | | | | | | |
| Emergency Generator & Associated Diesel Fuel Supply systems | | | | | | | | | | | | | |
| EL1170 | Fire Service Generators (Zone C & G) Final T&C and Interfacing with SCADA | | | | | | | | | | | | |
| EL1180 | Fire Service Generators (Zone A, D & J) Final T&C and Interfacing with SCADA | | | | | | | | | | | | |
| EL1190 | Emergency Generators (3no at EGB) Final T&C and Interfacing with SCADA | | | | | | | | | | | | |
| Other "Misc" Electrical Systems | | | | | | | | | | | | | |
| EL1200 | Earthing System - Final T&C | | | | | | | | | | | | |
| EL1210 | Lightning Protection System - Final T&C | | | | | | | | | | | | |
| EL1220 | SCADA System Interfacing with LV Sw Board and PQM Energy Mgt system | | | | | | | | | | | | |
| MVAC Systems | | | | | | | | | | | | | |
| Chiller Plant & Associated Chilled & Heating Water Distribution | | | | | | | | | | | | | |
| MV1000 | Stage 1 T&C for Chilled Water Circuit to enable Conditioned Wild Air | | | | | | | | | | | | |
| MV1010 | Progressive Energise Chiller Plant MCC's | | | | | | | | | | | | |
| MV1020 | Chilled Water - Primary & Secondary Water Circuit Flushing & Chemical Cleaning | | | | | | | | | | | | |
| MV1030 | Chiller Primary Water Circuit By-pass Loops Re-instatement following flushing | | | | | | | | | | | | |
| MV1040 | Chiller Secondary Water Circuit By-pass Loops at AHU's and Hx Re-instatement | | | | | | | | | | | | |
| MV1050 | Chilled Water Pumps - Functional and Performance Tests | | | | | | | | | | | | |
| MV1060 | Chilled Water System - Ancilliary Equipment T&C | | | | | | | | | | | | |
| MV1070 | Chiller 1 & 2 Initial start-up checks (with Chiller supplier) | | | | | | | | | | | | |
| MV1080 | Chiller 3 to 8 Initial start-up checks (with Chiller supplier) | | | | | | | | | | | | |
| MV1090 | Light Chiller 1 to 3 Initial start-up checks (with Chiller supplier) | | | | | | | | | | | | |
| MV1100 | Condensor Seawater Supply Available | | | | | | | | | | | | |
| MV1110 | Target Chillers 1 & 2 Chillers Available and Chilled Water ON (In Manual Mode) | | | | | | | | | | | | |
| MV1120 | Target ALL Chillers Available (In Manual Mode) | | | | | | | | | | | | |
| MV1130 | Chilled Water - Secondary Water Circuit Flushing & Chemical Cleaning - CUE | | | | | | | | | | | | |
| MV1140 | Chiller Secondary Water Circuit Remove By-pass Loops - CUE | | | | | | | | | | | | |
| MV1620 | Chilled Water Riser Branches local flushing | | | | | | | | | | | | |
| MV1630 | CHW Riser chemical treatment and cleaning | | | | | | | | | | | | |
| Chilled Water and Sea Water System SCADA T&C | | | | | | | | | | | | | |
| MV1150 | Progressive Power On to SCADA PLC Panels | | | | | | | | | | | | |
| MV1160 | SWPH & Chiller Plant - End to End SCADA Wiring - Point Testing from PLC to Field Equip | | | | | | | | | | | | |
| MV1170 | SWPH & Chiller Plant - SCADA Functional Testing | | | | | | | | | | | | |
| MV1180 | Chiller Plant & SWP - SCADA Chiller Start-up/Shut Down Programme Checking | | | | | | | | | | | | |
| MV1190 | Chiller & SWP Plant - SCADA Integrated Equipment Tests | | | | | | | | | | | | |
| MV1200 | Chiller & SWP Plant - SCADA Operation of System in Full Auto Mode | | | | | | | | | | | | |
| MV1210 | Chiller & SWP Plant - SCADA "Fine Tune" System Settings / Operation | | | | | | | | | | | | |
| Heating Water Distribution - T&C | | | | | | | | | | | | | |
| MV1220 | Heating Water Pumps - T&C / Pump Alignment | | | | | | | | | | | | |
| MV1230 | Primary & Secondary Heating Water Pipe Flushing and Chemical Cleaning | | | | | | | | | | | | |
| MV1240 | Stage 1 Water Balancing - Main Pipework Basement level and up to G/F Riser | | | | | | | | | | | | |
| MV1250 | Complete balance HTG Pwk - Flushing, Chem. Clean and Final Balance | | | | | | | | | | | | |
| Heat Pumps - Initial start-up SAT checks & SCADA T&C | | | | | | | | | | | | | |
| MV1260 | Heat Pump 1 to 4 Initial start-up checks (with Chiller supplier) | | | | | | | | | | | | |
| MV1270 | Progressive Power On to SCADA PLC Panels | | | | | | | | | | | | |
| MV1280 | Heat Pump - End to End SCADA Wiring - Point Testing from PLC to Field Eq. | | | | | | | | | | | | |
| MV1290 | Heat Pump System - SCADA Functional Testing | | | | | | | | | | | | |
| MV1300 | Heat Pump - SCADA Heat Pump Start-up/Shut Down Programme Checking | | | | | | | | | | | | |

Remaining Level of Effort
 Remaining Work
 Milestone
 Critical Remaining Work

| Activity ID | Activity Name | February 2018 | | | | March 2018 | | | | April 2018 | | | | |
|--|---|---------------|----|----|----|------------|----|----|----|------------|----|----|----|----|
| | | 04 | 11 | 18 | 25 | 04 | 11 | 18 | 25 | 01 | 08 | 15 | 22 | 29 |
| MV1310 | Heat Pump system- SCADA Integrated Equipment Tests | | | | | | | | | | | | | |
| MV1320 | Heat Pump - SCADA Operation of System in Full Auto Mode | | | | | | | | | | | | | |
| AHU, Fans & Associated Distribution (including VAV, FCU, etc) B/F | | | | | | | | | | | | | | |
| MV1340 | FCU Installations at LV Switch Rooms and Elect/ELV Rooms | | | | | | | | | | | | | |
| MV1350 | Misc Ventilation Systems (various areas) | | | | | | | | | | | | | |
| All Cabins (G/F to Roof) - incls AHU+Duct Riser+ VAV(if applicable)+ Final Air Grille | | | | | | | | | | | | | | |
| MV1360 | BOH Cabin AHU - Chilled water Available - Initial AHU Start-up T&C | | | | | | | | | | | | | |
| MV1370 | BOH Cabin AHU & Main Distribution Ducts - Initial System Air Balance for conditioned "Wild Air" | | | | | | | | | | | | | |
| MV1380 | Target ALL Cabin AHU's Operational - providing conditioned "Wild Air" to Cabins | | | | | | | | | | | | | |
| MV1390 | Cabins VAV Box -Progressive Power On for VAV Box & SCADA network | | | | | | | | | | | | | |
| MV1400 | BOH Cabin AHU - Complete Final Airside Balancing for Main Duct Runs and at VAV boxes | | | | | | | | | | | | | |
| MV1410 | BOH Cabins AHU & VAV -Final SCADA Interfacing & Control for Air-side Equipment | | | | | | | | | | | | | |
| MV1420 | BOH Cabin AHU & VAV - Put SCADA in Auto / "Fine Tune" System Settings / Operation | | | | | | | | | | | | | |
| MV1430 | BOH cabins : FCU Installations at BOH Elect/ELV Rooms | | | | | | | | | | | | | |
| MV1440 | CRAC System for Critical Rooms (Split Refrig. & Waterside Units) incl SCADA Interfacing | | | | | | | | | | | | | |
| MV1450 | BOH Cabins : Misc Ventilation Systems (various areas) | | | | | | | | | | | | | |
| G/F FOH Concourse - incls AHU+Duct Riser+ Drum Louvre /Final Air Grille | | | | | | | | | | | | | | |
| MV1460 | FOH AHU - Chilled Water Available - Initial AHU Start-up T&C | | | | | | | | | | | | | |
| MV1470 | FOH AHU & Main Distribution Ducts - Initial System Air Balance for "Wild Air" | | | | | | | | | | | | | |
| MV1480 | Target 50% of FOH AHU's Operational - providing conditioned "Wild Air" to FOH | | | | | | | | | | | | | |
| MV1490 | Target 100% of FOH AHU's Operational - providing conditioned "Wild Air" to FOH | | | | | | | | | | | | | |
| MV1500 | FOH AHU, Distribution Duct & Drum Louvre - Final Airside Balancing for Main Duct Runs | | | | | | | | | | | | | |
| MV1510 | FOH Areas: AHU - Final SCADA Interfacing & Control for Air-side Equipment | | | | | | | | | | | | | |
| MV1520 | FOH Areas - Put AHU SCADA in Auto / "Fine Tune" System Settings / Operation | | | | | | | | | | | | | |
| MV1530 | R&G Channel, Kiosks and Retail: MVAC Installations T&C | | | | | | | | | | | | | |
| 1/F FOH Concourse - incls AHU+Duct Riser+ VAV(if applicable)+ Final Air Grille | | | | | | | | | | | | | | |
| MV1540 | FOH AHU - Chilled Water Available - Initial AHU Start-up T&C | | | | | | | | | | | | | |
| MV1550 | FOH AHU & Main Distribution Ducts - Initial System Air Balance for "Wild Air" | | | | | | | | | | | | | |
| MV1560 | Target 50% of FOH AHU's Operational - providing conditioned "Wild Air" to FOH | | | | | | | | | | | | | |
| MV1570 | Target 100% of FOH AHU's Operational - providing conditioned "Wild Air" to FOH | | | | | | | | | | | | | |
| MV1580 | FOH AHU, Distribution Duct & Drum Louvre - Final Airside Balancing for Main Duct Runs | | | | | | | | | | | | | |
| MV1590 | FOH Areas: AHU - Final SCADA Interfacing & Control for Air-side Equipment | | | | | | | | | | | | | |
| MV1600 | FOH Areas - Put AHU SCADA in Auto / "Fine Tune" System Settings / Operation | | | | | | | | | | | | | |
| MV1610 | R&G Channel, Kiosks and Retail: MVAC Installations T&C | | | | | | | | | | | | | |

| Activity ID | Activity Name | 2015 | | | 2016 | | | | 2017 | | | | 2018 | | | | 2019 | | |
|--|--|--|----|----|------|----|----|----|------|----|----|----|------|----|----|----|------|----|----|
| | | Q2 | Q3 | Q4 | Q1 | Q2 | Q3 | Q4 | Q1 | Q2 | Q3 | Q4 | Q1 | Q2 | Q3 | Q4 | Q1 | Q2 | Q3 |
| Hong Kong-Zhuhai_Macao Bridge Hong Kong Boundary Crossing F | | <p>22-Oct-17, Hong Kong-Zhuhai_Macao Bridge</p> <p>23-Jun-17, Site and Facility Inspection:</p> <p>24-Aug-17, Access Dates</p> | | | | | | | | | | | | | | | | | |
| Key Dates | | | | | | | | | | | | | | | | | | | |
| Interface Activities | | | | | | | | | | | | | | | | | | | |
| Site and Facility Inspection | | | | | | | | | | | | | | | | | | | |
| JS1200 | Pre Site and Facility Inspection by Contractor at Location 4 - Deg2 | | | | | | | | | | | | | | | | | | |
| JS1210 | Joint Site and Facility Inspection with Interface Contractor at Location 4 - Deg2 | | | | | | | | | | | | | | | | | | |
| JS1620 | Pre Site and Facility Inspection by Contractor at Location 14 - Deg2 | | | | | | | | | | | | | | | | | | |
| JS1630 | Joint Site and Facility Inspection with Interface Contractor at Location 14 - Deg2 | | | | | | | | | | | | | | | | | | |
| JS1760 | Pre Site and Facility Inspection by Contractor at Location 18 - Deg1 | | | | | | | | | | | | | | | | | | |
| JS1770 | Joint Site and Facility Inspection with Interface Contractor at Location 18 - Deg1 | | | | | | | | | | | | | | | | | | |
| JS1780 | Pre Site and Facility Inspection by Contractor at Location 18 - Deg2 | | | | | | | | | | | | | | | | | | |
| JS1790 | Joint Site and Facility Inspection with Interface Contractor at Location 18 - Deg2 | | | | | | | | | | | | | | | | | | |
| Access Dates | | | | | | | | | | | | | | | | | | | |
| AD1000 | Location 1(PCB (001) Basement)-Deg1 (270d) | | | | | | | | | | | | | | | | | | |
| AD1010 | Location 1(PCB (001) Basement)-Deg2 (380d) | | | | | | | | | | | | | | | | | | |
| AD1020 | Location 1(PCB (001) ELV Room (Grid Line E3))-Deg1 (270d) | | | | | | | | | | | | | | | | | | |
| AD1030 | Location 1(PCB (001) ELV Room (Grid Line E3))-Deg2 (380d) | | | | | | | | | | | | | | | | | | |
| AD1040 | Location 2(PCB (001) First Floor Main Server Room)-Deg1 (330d) | | | | | | | | | | | | | | | | | | |
| AD1050 | Location 2(PCB (001) First Floor Main Server Room)-Deg2 (380d) | | | | | | | | | | | | | | | | | | |
| AD1060 | Location 2(PCB (001) First Floor Main Server Room) - For Server Installation - Deg2 (380d) | | | | | | | | | | | | | | | | | | |
| AD1070 | Location 2(PCB (001) Ground Floor ELV Room (Grid Line E3)) - Deg1 (330d) | | | | | | | | | | | | | | | | | | |
| AD1080 | Location 2(PCB (001) Ground Floor DOH Port Health Control Room (Grid Line BD5)) - Deg1 (330d) | | | | | | | | | | | | | | | | | | |
| AD1090 | Location 2(PCB (001) Ground Floor DOH Port Health Control Room (Grid Line BD5)) - Deg2 (380d) | | | | | | | | | | | | | | | | | | |
| AD1130 | Location 3(Inbd Cargo Exam Bldg (037) Platform Control Room)-Deg2 (500d) | | | | | | | | | | | | | | | | | | |
| AD1150 | Location 3(Inbd Cargo Exam Bldg (037) Inspector Offices 128,129,130,131,128,129,14) | | | | | | | | | | | | | | | | | | |
| AD1170 | Location 3a(Inbd Cargo Exam Bldg (037) ROCARS Room)-Deg2 (480d) | | | | | | | | | | | | | | | | | | |
| AD1190 | Location 3a(Inbd Cargo Exam Bldg (037) Main Server Room)-Deg2 (480d) | | | | | | | | | | | | | | | | | | |
| AD1200 | Location 3a(Inbd Cargo Exam Bldg (037) Main Server Room) - For Server installation - Deg2 (480d) | | | | | | | | | | | | | | | | | | |
| AD1220 | Location 4(Outbd Cargo Exam Bldg (023))-Deg2 (680d) | | | | | | | | | | | | | | | | | | |
| AD1240 | Location 4a(Outbd Cargo Exam Bldg (023))-Deg2 (630d) | | | | | | | | | | | | | | | | | | |
| AD1270 | Location 6(Common Utility Enclosure & Staff Subway)-Deg1 (400d) | | | | | | | | | | | | | | | | | | |
| AD1290 | Location 7(Common Utility Enclosure & Staff Subway)-Deg1 (270d) | | | | | | | | | | | | | | | | | | |
| AD1300 | Location 8(Inbd Private Car Annex (025))-Deg1 (430d) | | | | | | | | | | | | | | | | | | |
| AD1310 | Location 8(Inbd Private Car Annex (025))-Deg2 (580d) | | | | | | | | | | | | | | | | | | |
| AD1320 | Location 8(Inbd Private Car Annex (025) Canopy)-Deg1 (430d) | | | | | | | | | | | | | | | | | | |
| AD1330 | Location 8(Inbd Private Car Annex (025) Canopy)-Deg2 (580d) | | | | | | | | | | | | | | | | | | |
| AD1340 | Location 9(Outbd Private Car Annex (032))-Deg1 (520d) | | | | | | | | | | | | | | | | | | |
| AD1350 | Location 9(Outbd Private Car Annex (032))-Deg2 (660d) | | | | | | | | | | | | | | | | | | |
| AD1360 | Location 9(Outbd Private Car Annex (032) Canopy)-Deg1 (520d) | | | | | | | | | | | | | | | | | | |
| AD1370 | Location 9(Outbd Private Car Annex (032) Canopy)-Deg2 (660d) | | | | | | | | | | | | | | | | | | |
| AD1501 | Location 12(Inbd Private Car Kiosks(027))-Deg1 (400d) Phase 2 | | | | | | | | | | | | | | | | | | |
| AD1510 | Location 12(Inbd Private Car Kiosks(027))-Deg2 (480d) Phase 1 | | | | | | | | | | | | | | | | | | |
| AD1511 | Location 12(Inbd Private Car Kiosks(027))-Deg2 (480d) Phase 2 | | | | | | | | | | | | | | | | | | |
| AD1521 | Location 12(Inbd Private Car Kiosks(027) Canopy)-Deg1 (400d) Phase 2 | | | | | | | | | | | | | | | | | | |

| | | | | | | |
|---|--|--|-----------|------------|---------|----------|
| Programme No.: HZMB-DWP Data Date: 14-Aug-15 | | Hong Kong-Zhuhai-Macao Bridge Hong Kong Boundary Crossing Facilities - Automatic Vehicle Clearance Support System (AVCSS) | Date | Revision | Checked | Approved |
| | | | 14-Nov-16 | Rev.: 0 | WC | LC |
| | | | 10-Mar-17 | Rev.: 1.0a | WC | LC |
| | | | 5-May-17 | Rev.: 1.0b | WC | LC |

| Activity ID | Activity Name | 2015 | | | 2016 | | | | 2017 | | | | 2018 | | | | 2019 | | | |
|-------------|---|------|----|----|------|----|----|----|------|----|----|----|------|----|----|----|------|----|----|--|
| | | Q2 | Q3 | Q4 | Q1 | Q2 | Q3 | Q4 | Q1 | Q2 | Q3 | Q4 | Q1 | Q2 | Q3 | Q4 | Q1 | Q2 | Q3 | |
| AD1530 | Location 12(Inbd Private Car Kiosks(027) Canopy)-Deg2 (480d) Phase 1 | | | | | | | | | | | | | | | | | | | |
| AD1531 | Location 12(Inbd Private Car Kiosks(027) Canopy)-Deg2 (480d) Phase 2 | | | | | | | | | | | | | | | | | | | |
| AD1540 | Location 12(Inbd GV Kiosks (028))-Deg1 (400d) Phase 1 | | | | | | | | | | | | | | | | | | | |
| AD1541 | Location 12(Inbd GV Kiosks (028))-Deg1 (400d) Phase 2 | | | | | | | | | | | | | | | | | | | |
| AD1550 | Location 12(Inbd GV Kiosks (028))-Deg2 (480d) Phase 1 | | | | | | | | | | | | | | | | | | | |
| AD1551 | Location 12(Inbd GV Kiosks (028))-Deg2 (480d) Phase 2 | | | | | | | | | | | | | | | | | | | |
| AD1560 | Location 12(Inbd GV Kiosks (028) Canopy)-Deg1 (400d) Phase 1 | | | | | | | | | | | | | | | | | | | |
| AD1561 | Location 12(Inbd GV Kiosks (028) Canopy)-Deg1 (400d) Phase 2 | | | | | | | | | | | | | | | | | | | |
| AD1570 | Location 12(Inbd GV Kiosks (028) Canopy)-Deg2 (480d) Phase 1 | | | | | | | | | | | | | | | | | | | |
| AD1571 | Location 12(Inbd GV Kiosks (028) Canopy)-Deg2 (480d) Phase 2 | | | | | | | | | | | | | | | | | | | |
| AD1580 | Location 12(Outbd GV Kiosks (029))-Deg1 (400d) Phase 1 | | | | | | | | | | | | | | | | | | | |
| AD1581 | Location 12(Outbd GV Kiosks (029))-Deg1 (400d) Phase 2 | | | | | | | | | | | | | | | | | | | |
| AD1590 | Location 12(Outbd GV Kiosks (029))-Deg2 (480d) Phase 1 | | | | | | | | | | | | | | | | | | | |
| AD1591 | Location 12(Outbd GV Kiosks (029))-Deg2 (480d) Phase 2 | | | | | | | | | | | | | | | | | | | |
| AD1600 | Location 12(Outbd GV Kiosks (029) Canopy)-Deg1 (400d) Phase 1 | | | | | | | | | | | | | | | | | | | |
| AD1601 | Location 12(Outbd GV Kiosks (029) Canopy)-Deg1 (400d) Phase 2 | | | | | | | | | | | | | | | | | | | |
| AD1610 | Location 12(Outbd GV Kiosks (029) Canopy)-Deg2 (480d) Phase 1 | | | | | | | | | | | | | | | | | | | |
| AD1611 | Location 12(Outbd GV Kiosks (029) Canopy)-Deg2 (480d) Phase 2 | | | | | | | | | | | | | | | | | | | |
| AD1620 | Location 13(Outbd Private Car Kiosks (030))-Deg1 (480d) Phase 1 | | | | | | | | | | | | | | | | | | | |
| AD1630 | Location 13(Outbd Private Car Kiosks (030))-Deg2 (550d) Phase 1 | | | | | | | | | | | | | | | | | | | |
| AD1640 | Location 13(Outbd Private Car Kiosks (030) Canopy)-Deg1 (480d) Phase 1 | | | | | | | | | | | | | | | | | | | |
| AD1650 | Location 13(Outbd Private Car Kiosks (030) Canopy)-Deg2 (550d) Phase 1 | | | | | | | | | | | | | | | | | | | |
| AD1660 | Location 14(Future-Outbd/Inbd Private Car Kiosks)-Deg1 (610d) | | | | | | | | | | | | | | | | | | | |
| AD1670 | Location 14(Future-Outbd/Inbd Private Car Kiosks)-Deg2 (680d) | | | | | | | | | | | | | | | | | | | |
| AD1700 | Location 16(Outbd Traffic Control Kiosk (101))-Deg1 (400d) | | | | | | | | | | | | | | | | | | | |
| AD1710 | Location 16(Outbd Traffic Control Kiosk (101))-Deg2 (480d) | | | | | | | | | | | | | | | | | | | |
| AD1740 | Location 18(Outbd Private Car Exam Bldg(024))-Deg1 (-) | | | | | | | | | | | | | | | | | | | |
| AD1750 | Location 18(Outbd Private Car Exam Bldg(024))-Deg2 (670d) | | | | | | | | | | | | | | | | | | | |
| AD1780 | (by C03) Underground Ducting (UUD1.1) between CUE and Inbd Cargo Exam Bldg (0 | | | | | | | | | | | | | | | | | | | |
| AD1790 | (by C03) (UUD1.2) between Inbd Cargo Exam Bldg South (037[S]) and DOH Cargo C | | | | | | | | | | | | | | | | | | | |
| AD1800 | (by C03) (UUD2) between Inbd Cargo Exam Bldg North (037[N]) and Inbd Vehicle Cle | | | | | | | | | | | | | | | | | | | |
| AD1810 | (by C03) (UUD9.1) btw Inbd Cargo Exam Bldg S.(037[S]) & Inbd PC Exam Bldg(033) & | | | | | | | | | | | | | | | | | | | |
| AD1820 | (by C03) (UUD9.3) between Inbd Private Car Exam Bldg (033) and Inbd Vehicle Clear | | | | | | | | | | | | | | | | | | | |
| AD1830 | (by C03) (UUD9.2) between Inbd Private Car Exam Bldg (033) and Inbd Vehicle Clear | | | | | | | | | | | | | | | | | | | |
| AD1840 | (by C03) Underground Ducting (UUD3.1) between CUE to Outbd Cargo Exam Bldg (0 | | | | | | | | | | | | | | | | | | | |
| AD1850 | (by C03) (UUD3.2) btw Outbd Car Exam Bldg (023) and Outbd PC Exam Bldg (024) ai | | | | | | | | | | | | | | | | | | | |
| AD1860 | (byC03) (UUD4.1) between Outbd Private Car Exam Bldg (024) and Outbd Vehicle Cle | | | | | | | | | | | | | | | | | | | |
| AD1870 | (byC03) (UUD5) between Outbd Car Exam Bldg South (023[S]) and Outbd Vehicle Cle | | | | | | | | | | | | | | | | | | | |
| AD1880 | (by C03) Underground Ducting (UUD8) between CUE and Outbd PCA (032) | | | | | | | | | | | | | | | | | | | |
| AD1910 | (by C03) Inbound Vehicle Clearance Plaza | | | | | | | | | | | | | | | | | | | |
| AD1920 | (by C03) Outbound Vehicle Clearance Plaza | | | | | | | | | | | | | | | | | | | |

- Interfaces Provisions
- Mobilization Provisions
- WA4 Site Erection & Servicing

12-Aug-17, Interfaces Provisions
 22-Oct-17, Mobilization Provisions

| Programme No.: HZMB-DWP Data Date: 14-Aug-15 | <p> Actual Level of Effort summary Primary Baseline Actual Work Remaining Work Critical Remaining Work Baseline Milestone Milestone </p> | Hong Kong-Zhuhai-Macao Bridge Hong Kong Boundary Crossing Facilities - Automatic Vehicle Clearance Support System (AVCSS) | <table border="1" style="width: 100%; border-collapse: collapse;"> <thead> <tr> <th>Date</th> <th>Revision</th> <th>Checked</th> <th>Approved</th> </tr> </thead> <tbody> <tr> <td>14-Nov-16</td> <td>Rev.: 0</td> <td>WC</td> <td>LC</td> </tr> <tr> <td>10-Mar-17</td> <td>Rev.: 1.0a</td> <td>WC</td> <td>LC</td> </tr> <tr> <td>5-May-17</td> <td>Rev.: 1.0b</td> <td>WC</td> <td>LC</td> </tr> </tbody> </table> | Date | Revision | Checked | Approved | 14-Nov-16 | Rev.: 0 | WC | LC | 10-Mar-17 | Rev.: 1.0a | WC | LC | 5-May-17 | Rev.: 1.0b | WC | LC |
|---|--|--|---|------|----------|---------|----------|-----------|---------|----|----|-----------|------------|----|----|----------|------------|----|----|
| Date | Revision | Checked | Approved | | | | | | | | | | | | | | | | |
| 14-Nov-16 | Rev.: 0 | WC | LC | | | | | | | | | | | | | | | | |
| 10-Mar-17 | Rev.: 1.0a | WC | LC | | | | | | | | | | | | | | | | |
| 5-May-17 | Rev.: 1.0b | WC | LC | | | | | | | | | | | | | | | | |

| Activity ID | Activity Name | 2015 | | | | | | | | | | | | 2016 | | | | 2017 | | | | 2018 | | | | 2019 | | |
|-------------|---|------|----|----|----|----|----|----|----|----|----|----|----|------|----|----|----|------|----|----|----|------|--|--|--|------|--|--|
| | | Q2 | Q3 | Q4 | Q1 | Q2 | Q3 | Q4 | Q1 | Q2 | Q3 | Q4 | Q1 | Q2 | Q3 | Q4 | Q1 | Q2 | Q3 | Q1 | Q2 | Q3 | | | | | | |
| | Detailed Design Specification | | | | | | | | | | | | | | | | | | | | | | | | | | | |
| | Construction Design and Management | | | | | | | | | | | | | | | | | | | | | | | | | | | |
| | Supply/Manufacture Mock-up items | | | | | | | | | | | | | | | | | | | | | | | | | | | |
| | Supply/Manufacture prototypes | | | | | | | | | | | | | | | | | | | | | | | | | | | |
| | Software Design, Coding and Testing | | | | | | | | | | | | | | | | | | | | | | | | | | | |
| | Coding | | | | | | | | | | | | | | | | | | | | | | | | | | | |
| | Software System Integration | | | | | | | | | | | | | | | | | | | | | | | | | | | |
| | Prototype & Software Simulation Tests | | | | | | | | | | | | | | | | | | | | | | | | | | | |
| | Procurement - Phase 1 / Section I | | | | | | | | | | | | | | | | | | | | | | | | | | | |
| | Supply/Manufacture products for FAT | | | | | | | | | | | | | | | | | | | | | | | | | | | |
| | Factory Acceptance Test (FAT) | | | | | | | | | | | | | | | | | | | | | | | | | | | |
| | Supply/Manufacture Equipment | | | | | | | | | | | | | | | | | | | | | | | | | | | |
| | Delivery and Bench Acceptance Test for Phase 1/ Section I | | | | | | | | | | | | | | | | | | | | | | | | | | | |
| | Installation - Phase 1 / Section I | | | | | | | | | | | | | | | | | | | | | | | | | | | |
| | Location 1(PCB (001) Basement) | | | | | | | | | | | | | | | | | | | | | | | | | | | |
| EM1920 | L1(001)B/F - Cable Laying and termination at Location 1 and Location 2 | | | | | | | | | | | | | | | | | | | | | | | | | | | |
| | Location 1(PCB (001) ELV Room (Grid Line E3)) | | | | | | | | | | | | | | | | | | | | | | | | | | | |
| EM1940 | L1(001)ELV Rm - Cable Laying and termination at Location 1 and Location 2 | | | | | | | | | | | | | | | | | | | | | | | | | | | |
| | Location 2(PCB (001) Ground Floor ELV Room (Grid Line E3)) | | | | | | | | | | | | | | | | | | | | | | | | | | | |
| EM1960 | L2(001)ELV Rm - Cable Laying and termination at Location 1 and Location 2 | | | | | | | | | | | | | | | | | | | | | | | | | | | |
| | Location 2(PCB (001) Ground Floor DOH Port Health Control Room (Grid Line BD5)) | | | | | | | | | | | | | | | | | | | | | | | | | | | |
| EM1080 | L2(001)Heath Ctrl Rm - Cable Laying and termination at Location 1 and Location 2 | | | | | | | | | | | | | | | | | | | | | | | | | | | |
| EM1100 | L2(001)Heath Ctrl Rm - Cable Splicing and Testing and Labeling | | | | | | | | | | | | | | | | | | | | | | | | | | | |
| EM1120 | L2(001)Health Ctrl Rm - Intercom and PA system Installation | | | | | | | | | | | | | | | | | | | | | | | | | | | |
| EM1140 | L2(001)Heath Ctrl Rm - Intercom and PA system tuning | | | | | | | | | | | | | | | | | | | | | | | | | | | |
| | Location 2(PCB (001) First Floor Main Server Room) | | | | | | | | | | | | | | | | | | | | | | | | | | | |
| EM1000 | L2(001)Main Server Rm - Cable Laying and termination at Location 1 and Location 2 | | | | | | | | | | | | | | | | | | | | | | | | | | | |
| EM1020 | L2(001)Main Server Rm - Cable Splicing and Testing and Labeling | | | | | | | | | | | | | | | | | | | | | | | | | | | |
| EM1040 | L2(001)Main Server Rm - AVCSS Network and Server Installation | | | | | | | | | | | | | | | | | | | | | | | | | | | |
| EM1060 | L2(001)Main Server Rm - AVCSS Network and Server Tuning | | | | | | | | | | | | | | | | | | | | | | | | | | | |
| | Location 3(Inbd Cargo Exam Bldg (037) MDF Room) | | | | | | | | | | | | | | | | | | | | | | | | | | | |
| | Location 3(Inbd Cargo Exam Bldg (037) ELV Room) | | | | | | | | | | | | | | | | | | | | | | | | | | | |
| | Location 3(Inbd Cargo Exam Bldg (037) Inspector Offices 128,129,130,131,128,129,141) | | | | | | | | | | | | | | | | | | | | | | | | | | | |
| EM2020 | L3(037)Inspec Offices - Cable Laying and termination in Location 3 and Location 3a | | | | | | | | | | | | | | | | | | | | | | | | | | | |
| EM2040 | L3(037)Inspec Offices - Cable Splicing and Testing and Labeling | | | | | | | | | | | | | | | | | | | | | | | | | | | |
| EM2060 | L3(037)Inspec Offices - AVCSS SURCON WS and 55" LCD Installation | | | | | | | | | | | | | | | | | | | | | | | | | | | |
| EM2080 | L3(037)Inspec Offices - VTS WS Installation | | | | | | | | | | | | | | | | | | | | | | | | | | | |
| EM2100 | L3(037)Inspec Offices - SURCON and WS Tuning | | | | | | | | | | | | | | | | | | | | | | | | | | | |
| | Location 3(Inbd Cargo Exam Bldg (037) Platform Control Room) | | | | | | | | | | | | | | | | | | | | | | | | | | | |
| EM1160 | L3(037)PLF Ctrl Rm - Cable Laying and termination in Location 3 and Location 3a | | | | | | | | | | | | | | | | | | | | | | | | | | | |
| EM1180 | L3(037)PLF Ctrl Rm - Cable Splicing and Testing and Labeling | | | | | | | | | | | | | | | | | | | | | | | | | | | |
| EM1200 | L3(037)PLF Ctrl Rm - AVCSS SYSCON WS and 55" TV Wall Installation | | | | | | | | | | | | | | | | | | | | | | | | | | | |
| EM1220 | L3(037)PLF Ctrl Rm - AVCSS SYSCON WS Tuning | | | | | | | | | | | | | | | | | | | | | | | | | | | |

01-Sep-17, Installation - Phase 1 / Section I
 22-Jun-17, Location:1(PCB (001),Basement)
 L1(001)B/F - Cable Laying and termination at Location
 22-Jun-17, Location:1(PCB (001),ELV Room (Grid Line
 L1(001)ELV Rm - Cable Laying and termination at Loca
 22-Jun-17, Location:2(PCB (001),Ground Floor ELV R
 L2(001)ELV Rm - Cable Laying and termination at Loca
 18-Aug-17, Location:2(PCB (001),Ground Floor DO
 L2(001)Heath Ctrl Rm - Cable Laying and termination
 L2(001)Heath Ctrl Rm - Cable Splicing and Testing and
 L2(001)Health Ctrl Rm - Intercom and PA system In
 L2(001)Health Ctrl Rm - Intercom and PA system tu
 21-Aug-17, Location:2(PCB (001) First Floor Main
 L2(001)Main Server Rm - Cable Laying and terminatio
 L2(001)Main Server Rm - Cable Splicing and Testing
 L2(001)Main Server Rm - AVCSS Network and Ser
 L2(001)Main Server Rm - AVCSS Network and Se
 07-Aug-17, Location 3(Inbd Cargo Exam Bldg (037
 L3(037)Inspec Offices - Cable Laying and termination i
 L3(037)Inspec Offices - Cable Splicing and Testing and
 L3(037)Inspec Offices - AVCSS SURCON WS and 5
 L3(037)Inspec Offices - VTS WS Installation
 L3(037)Inspec Offices - SURCON and WS Tuning
 07-Aug-17, Location 3(Inbd Cargo Exam Bldg (037
 L3(037)PLF Ctrl Rm - Cable Laying and termination in
 L3(037)PLF Ctrl Rm - Cable Splicing and Testing and
 L3(037)PLF Ctrl Rm - AVCSS SYSCON WS and 55
 L3(037)PLF Ctrl Rm - AVCSS SYSCON WS Tuning

| | | | | | | |
|---|--|--|-----------|------------|---------|----------|
| Programme No.: HZMB-DWP Data Date: 14-Aug-15 | | Hong Kong-Zhuhai-Macao Bridge Hong Kong Boundary Crossing Facilities - Automatic Vehicle Clearance Support System (AVCSS) | Date | Revision | Checked | Approved |
| | | | 14-Nov-16 | Rev.: 0 | WC | LC |
| | | | 10-Mar-17 | Rev.: 1.0a | WC | LC |
| | | | 5-May-17 | Rev.: 1.0b | WC | LC |

| Activity ID | Activity Name | 2015 | | | 2016 | | | | 2017 | | | | 2018 | | | | 2019 | | |
|---|---------------|---|----|----|------|----|----|----|------|----|----|----|------|----|----|----|------|----|----|
| | | Q2 | Q3 | Q4 | Q1 | Q2 | Q3 | Q4 | Q1 | Q2 | Q3 | Q4 | Q1 | Q2 | Q3 | Q4 | Q1 | Q2 | Q3 |
| Location 3a(Inbd Cargo Exam Bldg (037) ROCARS Room) | | <ul style="list-style-type: none"> EM1240 L3a(037) ROCARS Rm - Cable Laying and termination in Location 3 and Location 3a EM1260 L3a(037) ROCARS Rm - Cable Splicing and Testing and Labeling EM1280 L3a(037) ROCARS Rm - AVCSS SYSCON and SURCON and Intercom Installation EM1300 L3a(037) ROCARS Rm - VTS WS Installation EM1320 L3a(037) ROCARS Rm - VID WS Installation EM1340 L3a(037) ROCARS Rm - SURCON and SYSCON and WS Tuning | | | | | | | | | | | | | | | | | |
| Location 3a(Inbd Cargo Exam Bldg (037) Main Server Room) | | <ul style="list-style-type: none"> EM2120 L3a(037)Main Server Rm - Cable Laying and termination in Location 3 and Location 3a EM2140 L3a(037)Main Server Rm - Cable Splicing and Testing and Labeling EM2160 L3a(037)Main Server Rm - AVCSS Server Installation EM2180 L3a(037)Main Server Rm - VTS Server Installation EM2200 L3a(037)Main Server Rm - Servers Tuning | | | | | | | | | | | | | | | | | |
| Location 4(Outbd Cargo Exam Bldg (023) MDF Room) | | <ul style="list-style-type: none"> EM2240 L4a(023)ROCARS Rm - Cable Splicing and Testing and Labeling EM2260 L4a(023)ROCARS Rm - AVCSS SYSCON and SURCON and Intercom Installation EM2280 L4a(023)ROCARS Rm - VTS WS Installation EM2300 L4a(023)ROCARS Rm - SYSCON and SURCON and WS Tuning | | | | | | | | | | | | | | | | | |
| Location 5(Common Utility Enclosure & Staff Subway) | | <ul style="list-style-type: none"> EM2341 L5(CUE) - Cable Laying between Location 5 and Location 6 EM2361 L5(CUE) - Cable Laying between Location 5 and Location 7 EM2380 L5(CUE) - Cable Splicing and Testing and Labeling | | | | | | | | | | | | | | | | | |
| Location 6(Common Utility Enclosure & Staff Subway) | | <ul style="list-style-type: none"> EM2400 L6(CUE) - Cable Laying between Location 5 and Location 6 EM2420 L6(CUE) - Cable Splicing and Testing and Labeling | | | | | | | | | | | | | | | | | |
| Location 7(Common Utility Enclosure & Staff Subway) | | <ul style="list-style-type: none"> EM2440 L7(CUE) - Cable Laying between Location 5 and Location 7 EM2460 L7(CUE) - Cable Splicing and Testing and Labeling | | | | | | | | | | | | | | | | | |
| Location 12(Inbd Private Car Kiosks,GV Kiosks (027,028,029)) | | <ul style="list-style-type: none"> Inbd Private Car Kiosks(027) - 9 nos (Phase 1) <ul style="list-style-type: none"> EM1500 L12(027)(9nos P1) - Cable Splicing and Testing and Labeling EM1520 L12(027)(9nos P1) - AVCSS/MOM Kiosk Equipment Installation (9 nos) EM1541 L12(027)(9nos P1) - XDB installation (18 nos) EM1542 L12(027)(9nos P1) - ODB installation (5 nos) EM1543 L12(027)(9nos P1) - ODB installation (2 nos) EM1544 L12(027)(9nos P1) - ODB installation (2 nos) EM1560 L12(027)(9nos P1) - Loop installation (45 nos) Inbd Goods Vehicle Kiosks(028) - 5 nos (Phase 1) <ul style="list-style-type: none"> EM1620 L12(028)(5nos P1) - Cable Laying and termination EM1640 L12(028)(5nos P1) - Cable Splicing and Testing and Labeling EM1660 L12(028)(5nos P1) - AVCSS/MOM Kiosk Equipment Installation (5 nos) EM1681 L12(028)(5nos P1) - XDB installation (10 nos) EM1682 L12(028)(5nos P1) - ODB installation (3 nos) EM1683 L12(028)(5nos P1) - ODB installation (2 nos) | | | | | | | | | | | | | | | | | |

Programme No.: HZMB-DWP
Data Date: 14-Aug-15

- Actual Level of Effort
- Primary Baseline
- Actual Work
- Remaining Work
- Critical Remaining Work
- Baseline Milestone
- Milestone

Hong Kong-Zhuhai-Macao Bridge
Hong Kong Boundary Crossing
Facilities - Automatic Vehicle
Clearance Support System (AVCSS)

| Date | Revision | Checked | Approved |
|-----------|------------|---------|----------|
| 14-Nov-16 | Rev.: 0 | WC | LC |
| 10-Mar-17 | Rev.: 1.0a | WC | LC |
| 5-May-17 | Rev.: 1.0b | WC | LC |

Detail Work Programme

| Activity ID | Activity Name | 2015 | | | 2016 | | | | 2017 | | | | 2018 | | | | 2019 | | |
|--|--|------|----|----|------|----|----|----|------|----|----|----|------|----|----|----|------|----|----|
| | | Q2 | Q3 | Q4 | Q1 | Q2 | Q3 | Q4 | Q1 | Q2 | Q3 | Q4 | Q1 | Q2 | Q3 | Q4 | Q1 | Q2 | Q3 |
| EM1700 | L12(028)(5nos P1) - AIOP Installation (5 nos) | | | | | | | | | | | | | | | | | | |
| EM1720 | L12(028)(5nos P1) - Loop installation (25 nos) | | | | | | | | | | | | | | | | | | |
| Outbd Goods Vehicle Kiosks(029) - 5 nos (Phase 1) | | | | | | | | | | | | | | | | | | | |
| EM1740 | L12(029)(5nos P1) - Cable Containment in Kiosks | | | | | | | | | | | | | | | | | | |
| EM1760 | L12(029)(5nos P1) - Cable Laying and termination | | | | | | | | | | | | | | | | | | |
| EM1780 | L12(029)(5nos P1) - Cable Splicing and Testing and Labeling | | | | | | | | | | | | | | | | | | |
| EM1800 | L12(029)(5nos P1) - AVCSS/MOM Kiosk Equipment Installation (5 nos) | | | | | | | | | | | | | | | | | | |
| EM1821 | L12(029)(5nos P1) - XDB installation (5 nos) | | | | | | | | | | | | | | | | | | |
| EM1822 | L12(029)(5nos P1) - ODB installation (4 nos) | | | | | | | | | | | | | | | | | | |
| EM1823 | L12(029)(5nos P1) - ODB installation (1 nos) | | | | | | | | | | | | | | | | | | |
| EM1840 | L12(029)(5nos P1) - AIOP Installation (5 nos) | | | | | | | | | | | | | | | | | | |
| Location 13(Outbd Private Car Kiosks (030)) - 9 nos (Phase 1) | | | | | | | | | | | | | | | | | | | |
| EM2520 | L13(030)(9nos P1) - Cable Containment in Kiosks | | | | | | | | | | | | | | | | | | |
| EM2540 | L13(030)(9nos P1) - Cable Laying and termination | | | | | | | | | | | | | | | | | | |
| EM2560 | L13(030)(9nos P1) - Cable Splicing and Testing and Labeling | | | | | | | | | | | | | | | | | | |
| EM2580 | L13(030)(9nos P1) - AVCSS/MOM Kiosk Equipment Installation (9 nos) | | | | | | | | | | | | | | | | | | |
| EM2601 | L13(030)(9nos P1) - XDB installation (9 nos) | | | | | | | | | | | | | | | | | | |
| EM2602 | L13(030)(9nos P1) - ODB installation (7 nos) | | | | | | | | | | | | | | | | | | |
| Location 14(Future-Outbd/Inbd Private Car Kiosks) - 6+6 nos | | | | | | | | | | | | | | | | | | | |
| EM1440 | L14 - Cable Laying and termination at ELV Room in CUE | | | | | | | | | | | | | | | | | | |
| Location 15(Inbd Traffic Control Kiosk (100)) | | | | | | | | | | | | | | | | | | | |
| Location 16(Outbd Traffic Control Kiosk (101)) | | | | | | | | | | | | | | | | | | | |
| EM2760 | L16(101) - Cable Laying and termination | | | | | | | | | | | | | | | | | | |
| EM2780 | L16(101) - Cable Splicing and Testing and Labeling | | | | | | | | | | | | | | | | | | |
| EM2800 | L16(101) - AVCSS SYSCON and SURCON Installation | | | | | | | | | | | | | | | | | | |
| EM2820 | L16(101) - VTS WS and 55" LCD Installation | | | | | | | | | | | | | | | | | | |
| Location 17(Inbd Private Car Exam Bldg(033) Operational Office) | | | | | | | | | | | | | | | | | | | |
| Location 18 (Outbd Private Car Exam Bldg(024) Operational Office) | | | | | | | | | | | | | | | | | | | |
| EM2940 | L18(024) - Cable Laying and termination | | | | | | | | | | | | | | | | | | |
| EM2960 | L18(024) - Cable Splicing and Testing and Labeling | | | | | | | | | | | | | | | | | | |
| EM2980 | L18(024) - AVCSS SURCON and 55" LCD Installation | | | | | | | | | | | | | | | | | | |
| EM3000 | L18(024) - SURCON Tuning | | | | | | | | | | | | | | | | | | |
| Location 19 (DOH Cargo Clearance Bldg(043)) | | | | | | | | | | | | | | | | | | | |
| EM1360 | L19(043) - Cable Laying and termination | | | | | | | | | | | | | | | | | | |
| EM1380 | L19(043) - Cable Splicing and Testing and Labeling | | | | | | | | | | | | | | | | | | |
| EM1400 | L19(043) - PA and Intercom Installation | | | | | | | | | | | | | | | | | | |
| EM1420 | L19(043) - PA and Intercom Tuning | | | | | | | | | | | | | | | | | | |
| Inbd Vehicle Clearance Plaza - 8 nos VID, 7 nos VTS, 4 nos TLS | | | | | | | | | | | | | | | | | | | |
| EM3020 | Inbound VID cabling from pillar box to VID field equipment | | | | | | | | | | | | | | | | | | |
| EM3040 | Inbound VTS cabling from pillar box to VTS field equipment | | | | | | | | | | | | | | | | | | |
| EM3060 | Inbound TLS cabling from pillar box to TLS field equipment | | | | | | | | | | | | | | | | | | |
| EM3080 | Inbound VID field equipment installation (8 VID) | | | | | | | | | | | | | | | | | | |
| EM3100 | Inbound VTS field equipment installation (4 RFID + 3 Cameras) | | | | | | | | | | | | | | | | | | |
| EM3120 | Inbound TLS field equipment installation (4 TLS) | | | | | | | | | | | | | | | | | | |
| EM3140 | Inbound VID and VTS and TLS field equipment tuning | | | | | | | | | | | | | | | | | | |

| | | | | | | |
|---|--|--|-----------|------------|---------|----------|
| Programme No.: HZMB-DWP Data Date: 14-Aug-15 | | Hong Kong-Zhuhai-Macao Bridge Hong Kong Boundary Crossing Facilities - Automatic Vehicle Clearance Support System (AVCSS) | Date | Revision | Checked | Approved |
| | | | 14-Nov-16 | Rev.: 0 | WC | LC |
| | | | 10-Mar-17 | Rev.: 1.0a | WC | LC |
| | | | 5-May-17 | Rev.: 1.0b | WC | LC |

| Activity ID | Activity Name | 2015 | | | 2016 | | | | 2017 | | | | 2018 | | | | 2019 | | |
|---|---------------|---|----|----|------|----|----|----|------|----|----|----|------|----|----|----|------|----|----|
| | | Q2 | Q3 | Q4 | Q1 | Q2 | Q3 | Q4 | Q1 | Q2 | Q3 | Q4 | Q1 | Q2 | Q3 | Q4 | Q1 | Q2 | Q3 |
| Outbd Vehicle Clearance Plaza - 8 nos VID, 6 nos VTS, 4 nos TLS | | <ul style="list-style-type: none"> EM3160 Outbound VID cabling from pillar box to VID field equipment EM3180 Outbound VTS cabling from pillar box to VTS field equipment EM3200 Outbound TLS cabling from pillar box to TLS field equipment EM3220 Outbound VID field equipment installation (8 VID) EM3240 Outbound VTS field equipment installation (3 RFID + 3 Cameras) EM3260 Outbound TLS field equipment installation (4 TLS) EM3280 Outbound VID and VTS and TLS field equipment tuning | | | | | | | | | | | | | | | | | |
| Underground Ducting (UUD1.1) between CUE and Inbd Cargo Exam Bldg (037) | | <ul style="list-style-type: none"> UD1000 (UUD1.1 [CUE-037]) - Cable laying and termination | | | | | | | | | | | | | | | | | |
| (UUD1.2) between Inbd Cargo Exam Bldg South (037[S]) and DOH Cargo Clearance Bldg (037[S]) | | <ul style="list-style-type: none"> UD1060 (UUD1.2 [037[S]-043]) - Cable laying and termination | | | | | | | | | | | | | | | | | |
| Underground Ducting (UUD6) between CUE and Shuttle Bus Kiosk (006) and Inbd Private Car Exam Bldg (033) | | <ul style="list-style-type: none"> UD1040 (UUD9.1 [037[S]-033-100]) - Cable laying and termination | | | | | | | | | | | | | | | | | |
| (UUD9.1) btw IB Cargo Exam Bldg South(037[S]) & IB PC Exam Bldg(033) & IB Traffic Control Bldg (033) | | <ul style="list-style-type: none"> UD1010 (UUD2 [037[N]-IB VCP]) - Cable laying and termination | | | | | | | | | | | | | | | | | |
| (UUD2) between Inbd Cargo Exam Bldg North (037[N]) to Inbd VCP | | <ul style="list-style-type: none"> UD1070 (UUD9.3 [033-IB VCP[W]]) - Cable laying and termination | | | | | | | | | | | | | | | | | |
| (UUD9.3) between Inbd Private Car Exam Bldg (033) and Inbd Vehicle Clearance Plaza | | <ul style="list-style-type: none"> UD1020 (UUD9.2 [033-IB VCP[E]]) - Cable laying and termination | | | | | | | | | | | | | | | | | |
| (UUD9.2) between Inbd Private Car Exam Bldg (033) and Inbd Vehicle Clearance Plaza | | <ul style="list-style-type: none"> UD1030 (UUD3.1 [CUE-023]) - Cable laying and termination | | | | | | | | | | | | | | | | | |
| Underground Ducting (UUD7) between PCB(001) and Inbd Coach Kiosks(010) | | <ul style="list-style-type: none"> UD1050 (UUD3.2 [023-024-101]) - Cable laying and termination | | | | | | | | | | | | | | | | | |
| Underground Ducting (UUD3.1) between CUE and Outbd Cargo Exam Bldg (023) | | <ul style="list-style-type: none"> UD1100 (UUD8 [CUE-032]) - Cable laying and termination | | | | | | | | | | | | | | | | | |
| (UUD3.2) btw OB Car Exam Bldg(023) & OB PC Exam Bldg(024) & OB Traffic Control Bldg (023) | | <ul style="list-style-type: none"> UD1080 (UUD4.1 [024-OB VCP]) - Cable laying and termination | | | | | | | | | | | | | | | | | |
| Underground Ducting (UUD8) between CUE and Outbd PCA (032) | | <ul style="list-style-type: none"> UD1090 (UUD5 [023[S]-OB VCP]) - Cable laying and termination | | | | | | | | | | | | | | | | | |
| (UUD4.1) between Outbd PC Exam Bldg (024) and Outbd Vehicle Clearance Plaza | | <ul style="list-style-type: none"> UD1080 (UUD4.1 [024-OB VCP]) - Cable laying and termination | | | | | | | | | | | | | | | | | |
| (UUD5) between Outbd Car Exam Bldg (023[S]) and Outbd Vehicle Clearance Plaza | | <ul style="list-style-type: none"> UD1090 (UUD5 [023[S]-OB VCP]) - Cable laying and termination | | | | | | | | | | | | | | | | | |
| Initial On-Site Test and Commissioning / Pre-SAT (Phase 1 / Section I) | | | | | | | | | | | | | | | | | | | |
| Site Acceptance Test (Phase 1 / Section I) | | | | | | | | | | | | | | | | | | | |
| Security Risk Assessment and Audit | | | | | | | | | | | | | | | | | | | |
| Operability Period Test (Phase 1 / Section I) | | | | | | | | | | | | | | | | | | | |
| Completion (Phase 1 /Section I) | | | | | | | | | | | | | | | | | | | |
| Training and Document (Phase 1 /Section I) | | | | | | | | | | | | | | | | | | | |
| Operation (Phase 1 /Section I) | | | | | | | | | | | | | | | | | | | |
| Engineering Support for Phase 1 / Section I | | | | | | | | | | | | | | | | | | | |
| Procurement - Phase 2 / Section II | | | | | | | | | | | | | | | | | | | |
| Delivery and Bench Acceptance Test for Phase 2/Section II | | | | | | | | | | | | | | | | | | | |
| Installation - Phase 2 / Section II | | <ul style="list-style-type: none"> 30-Aug-17; Installation -Phase 2/ Section II | | | | | | | | | | | | | | | | | |








| | | | | | | |
|---|--|--|-----------|------------|---------|----------|
| Programme No.: HZMB-DWP Data Date: 14-Aug-15 | | Hong Kong-Zhuhai-Macao Bridge Hong Kong Boundary Crossing Facilities - Automatic Vehicle Clearance Support System (AVCSS) | Date | Revision | Checked | Approved |
| | | | 14-Nov-16 | Rev.: 0 | WC | LC |
| | | | 10-Mar-17 | Rev.: 1.0a | WC | LC |
| | | | 5-May-17 | Rev.: 1.0b | WC | LC |

| Activity ID | Activity Name | 2015 | | | 2016 | | | | 2017 | | | | 2018 | | | | 2019 | | | |
|---|--|--|----|----|------|----|----|----|------|----|----|----|------|----|----|----|------|----|----|--|
| | | Q2 | Q3 | Q4 | Q1 | Q2 | Q3 | Q4 | Q1 | Q2 | Q3 | Q4 | Q1 | Q2 | Q3 | Q4 | Q1 | Q2 | Q3 | |
| Location 8(Inbd Private Car Annex (025)) (Phase 2) | | ▼ 30-Aug-17; Location 8(Inbd Private Car Annex (025)) (Phase 2) | | | | | | | | | | | | | | | | | | |
| EM3370 | L8(025) - Cable Containment in Kiosks | | | | | | | | | | | | | | | | | | | ▼ L8(025) - Cable Containment in Kiosks |
| EM3380 | L8(025) - Cable Laying and termination | | | | | | | | | | | | | | | | | | | ▼ L8(025) - Cable Laying and termination |
| EM3400 | L8(025) - Cable Splicing and Testing and Labeling | | | | | | | | | | | | | | | | | | | ▼ L8(025) - Cable Splicing and Testing and Labeling |
| Location 9(Outbd Private Car Annex (032)) (Phase 2) | | ▼ 30-Aug-17; Location 9(Outbd Private Car Annex (032)) (Phase 2) | | | | | | | | | | | | | | | | | | |
| EM3500 | L9(032) - Cable Containment in Kiosks | | | | | | | | | | | | | | | | | | | ▼ L9(032) - Cable Containment in Kiosks |
| EM3520 | L9(032) - Cable Laying and termination | | | | | | | | | | | | | | | | | | | ▼ L9(032) - Cable Laying and termination |
| Initial On-Site Test and Commissioning / Pre-SAT (Phase 2 / Section II) | | | | | | | | | | | | | | | | | | | | |
| Site Acceptance Test (Phase 2 / Section II) | | | | | | | | | | | | | | | | | | | | |
| Operability Period Test (Phase 2 / Section II) | | | | | | | | | | | | | | | | | | | | |
| Completion (Phase 2 / Section II) | | | | | | | | | | | | | | | | | | | | |
| Engineering Support for Phase 2 / Section II | | | | | | | | | | | | | | | | | | | | |
| Procurement for Phase2 / Section III | | | | | | | | | | | | | | | | | | | | |
| Delivery and Bench Acceptance Test for Phase2 / Section III | | | | | | | | | | | | | | | | | | | | |
| Installation - Phase 2 / Section III | | | | | | | | | | | | | | | | | | | | |
| Location 10,11,12,13 (Vehicle Clearance Kiosks) | | ▼ 09-Oct-17; Installation - Phase 2/ Section III | | | | | | | | | | | | | | | | | | |
| Location 12 Inbd Private Car Kiosks (027) - 12 nos (Phase 2) | | ▼ 09-Oct-17; Location 10,11,12,13 (Vehicle Clearance Kiosks) | | | | | | | | | | | | | | | | | | |
| EM4440 | L12(027)(12nos P2) - Cable Laying and termination | | | | | | | | | | | | | | | | | | | ▼ 09-Oct-17; Location 12 Inbd Private Car Kiosks |
| EM4460 | L12(027)(12nos P2) - Cable Splicing and Testing and Labeling | | | | | | | | | | | | | | | | | | | ▼ L12(027)(12nos P2) - Cable Laying and termination |
| EM4480 | L12(027)(12nos P2) - AVCSS/DOH/MOM Kiosk Equipment Installation (12 nos) | | | | | | | | | | | | | | | | | | | ▼ L12(027)(12nos P2) - Cable Splicing and Testing and Labeling |
| Location 13 Outbd Private Car Kiosks (030) - 12 nos (Phase 2) | | ▼ 01-Sep-17; Location 13 Outbd Private Car Kiosks | | | | | | | | | | | | | | | | | | |
| EM4560 | L13(030)(12nos P2) - Cable Containment in Kiosks | | | | | | | | | | | | | | | | | | | ▼ L13(030)(12nos P2) - Cable Containment in Kiosk |
| Location 12 Outbd Goods Vehicle Kiosks (029) - 3 nos (Phase 2) | | ▼ 31-Aug-17; Location 12 Outbd Goods Vehicle Kiosks | | | | | | | | | | | | | | | | | | |
| EM4880 | L12(029)(3nos P2) - Cable Laying and termination | | | | | | | | | | | | | | | | | | | ▼ L12(029)(3nos P2) - Cable Laying and termination |
| EM4900 | L12(029)(3nos P2) - Cable Splicing and Testing and Labeling | | | | | | | | | | | | | | | | | | | ▼ L12(029)(3nos P2) - Cable Splicing and Testing and |
| EM4920 | L12(029)(3nos P2) - AVCSS/DOH/MOM Kiosk Equipment Installation (3 nos) | | | | | | | | | | | | | | | | | | | ▼ L12(029)(3nos P2) - AVCSS/DOH/MOM Kiosk Equip |
| EM4940 | L12(029)(3nos P2) - ODB & XDB Installation (3 nos) | | | | | | | | | | | | | | | | | | | ▼ L12(029)(3nos P2) - ODB & XDB Installation (3 nos |
| EM4960 | L12(029)(3nos P2) - AIOP Installation (3 nos) | | | | | | | | | | | | | | | | | | | ▼ L12(029)(3nos P2) - AIOP Installation (3 nos) |
| EM4980 | L12(029)(3nos P2) - Loop Installation (15 nos) | | | | | | | | | | | | | | | | | | | ▼ L12(029)(3nos P2) - Loop Installation (15 nos) |
| Location 11 Outbd Coach Kiosks (009) - 4 nos (Phase 2) | | | | | | | | | | | | | | | | | | | | |
| Location 12 Inbd Goods Vehicle Kiosks (028) - 3 nos (Phase 2) | | ▼ 24-Aug-17; Location 12 Inbd Goods Vehicle Kiosks | | | | | | | | | | | | | | | | | | |
| EM4720 | L12(028)(3nos P2) - Cable Laying and termination | | | | | | | | | | | | | | | | | | | ▼ L12(028)(3nos P2) - Cable Laying and termination |
| EM4740 | L12(028)(3nos P2) - Cable Splicing and Testing and Labeling | | | | | | | | | | | | | | | | | | | ▼ L12(028)(3nos P2) - Cable Splicing and Testing and |
| EM4760 | L12(028)(3nos P2) - AVCSS/DOH/MOM Kiosk Equipment Installation (3 nos) | | | | | | | | | | | | | | | | | | | ▼ L12(028)(3nos P2) - AVCSS/DOH/MOM Kiosk Equip |
| EM4780 | L12(028)(3nos P2) - ODB & XDB Installation (3 nos) | | | | | | | | | | | | | | | | | | | ▼ L12(028)(3nos P2) - ODB & XDB Installation (3 nos |
| EM4800 | L12(028)(3nos P2) - AIOP Installation (3 nos) | | | | | | | | | | | | | | | | | | | ▼ L12(028)(3nos P2) - AIOP Installation (3 nos) |
| EM4820 | L12(028)(3nos P2) - Loop Installation (15 nos) | | | | | | | | | | | | | | | | | | | ▼ L12(028)(3nos P2) - Loop Installation (15 nos) |
| EM4840 | L12(028)(3nos P2) - Kiosk Equipment Configuration (3 nos) | | | | | | | | | | | | | | | | | | | ▼ L12(028)(3nos P2) - Kiosk Equipment Configurati |
| EM5120 | L12(028)(3nos P2) - Inbd Goods Vehicle Kiosks Installation Complete | | | | | | | | | | | | | | | | | | | ▼ L12(028)(3nos P2) - Inbd Goods Vehicle Kiosks Ins |
| Location 10 Shuttle Bus Kiosks (006) - 4 nos (Phase 2) | | ▼ 30-Aug-17; Location 10 Shuttle Bus Kiosks (006) - | | | | | | | | | | | | | | | | | | |
| EM4000 | L10(006)(4nos P2) - Cable Containment in Kiosks | | | | | | | | | | | | | | | | | | | ▼ L10(006)(4nos P2) - Cable Containment in Kiosks |
| Location 11 Inbd Coach Kiosks (010) - 2 nos (Phase 2)-1 | | | | | | | | | | | | | | | | | | | | |
| Location 11 Inbd Coach Kiosks (010) - 2 nos (Phase 2)-2 | | | | | | | | | | | | | | | | | | | | |
| Initial On-Site Test and Commissioning / Pre-SAT (Phase 2 / Section III) | | | | | | | | | | | | | | | | | | | | |

| | | | | | | |
|---|--|--|-----------|------------|---------|----------|
| Programme No.: HZMB-DWP Data Date: 14-Aug-15 | | Hong Kong-Zhuhai-Macao Bridge Hong Kong Boundary Crossing Facilities - Automatic Vehicle Clearance Support System (AVCSS) | Date | Revision | Checked | Approved |
| | | | 14-Nov-16 | Rev.: 0 | WC | LC |
| | | | 10-Mar-17 | Rev.: 1.0a | WC | LC |
| | | | 5-May-17 | Rev.: 1.0b | WC | LC |

| Activity ID | Activity Name | Original Start | Finish | Esoal | Total | Calendar | | | | | | | | | | | | | | | | | |
|-------------|--|----------------|--------|-------|-------|----------|----|----|------|----|----|----|------|----|----|----|------|----|----|----|------|----|----|
| | | | | | | 2015 | | | 2016 | | | | 2017 | | | | 2018 | | | | 2019 | | |
| | | | | | | Q2 | Q3 | Q4 | Q1 | Q2 | Q3 | Q4 | Q1 | Q2 | Q3 | Q4 | Q1 | Q2 | Q3 | Q4 | Q1 | Q2 | Q3 |
| | <ul style="list-style-type: none">  Site Acceptance Test (Phase 2 / Section III)  Operability Period Test (Phase 2 / Section III)  Completion (Phase 2 / Section III)  Operation (Phase 2 / Section III)  Defect Liability Period (DLP)  Document Submission (Phase 2 / Section III) | | | | | | | | | | | | | | | | | | | | | | |

Programme No.: HZMB-DWP
 Data Date: 14-Aug-15

-  Actual Level of Effort
-  Primary Baseline
-  Actual Work
-  Remaining Work
-  Critical Remaining Work
-  Baseline Milestone
-  Milestone

▼ summary

Hong Kong-Zhuhai-Macao Bridge
 Hong Kong Boundary Crossing
 Facilities - Automatic Vehicle
 Clearance Support System (AVCSS)

| Date | Revision | Checked | Approved |
|-----------|------------|---------|----------|
| 14-Nov-16 | Rev.: 0 | WC | LC |
| 10-Mar-17 | Rev.: 1.0a | WC | LC |
| 5-May-17 | Rev.: 1.0b | WC | LC |