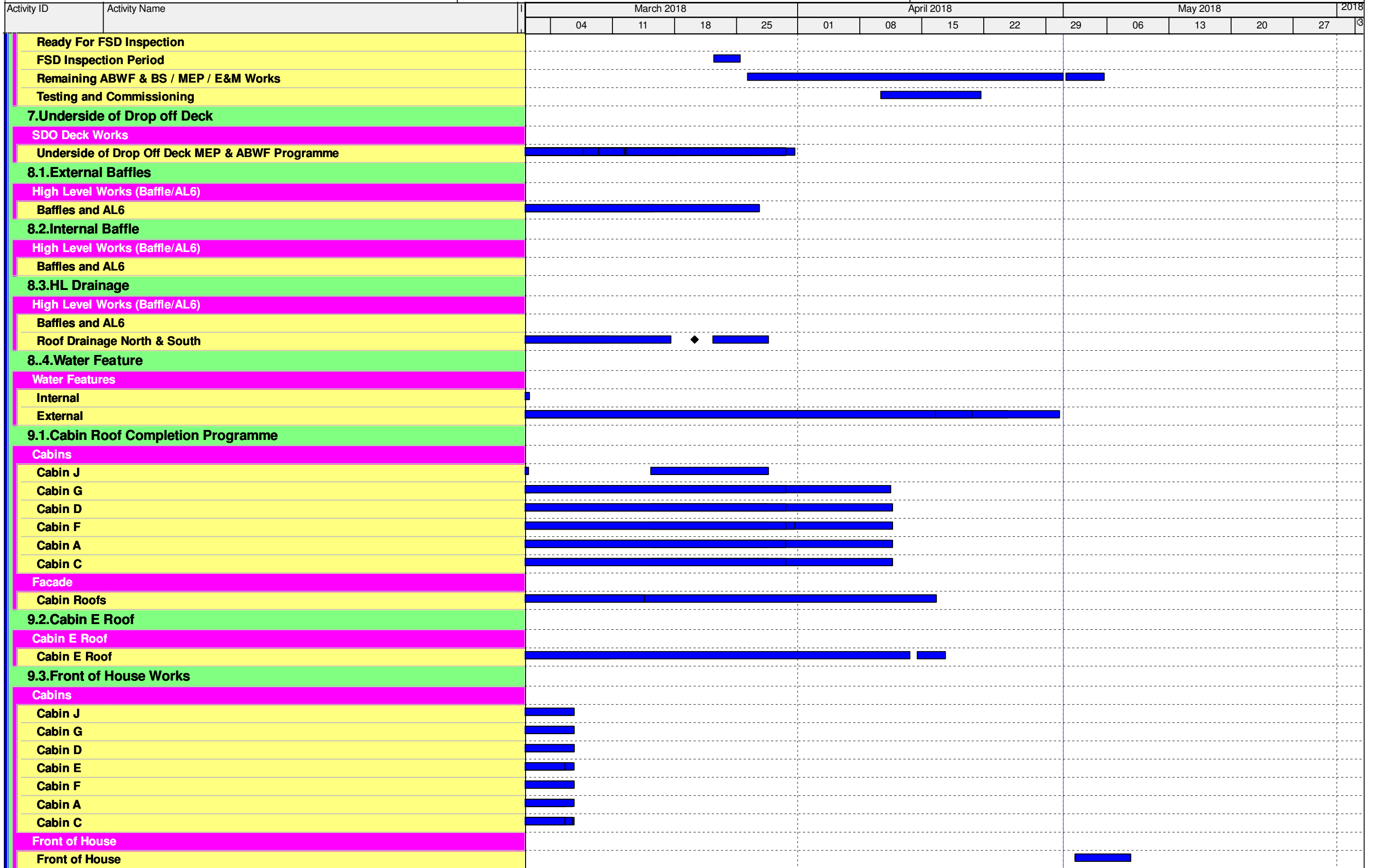


| Activity ID | Activity Name | March 2018 | | | | April 2018 | | | | May 2018 | | | | 2018 | |
|---|--|------------|----|----|----|------------|----|----|----|----------|----|----|----|------|----|
| | | 04 | 11 | 18 | 25 | 01 | 08 | 15 | 22 | 29 | 06 | 13 | 20 | 27 | 03 |
| | | | | | | | | | | | | | | | |
| Target Programme to Completion Update DD 1st May | | | | | | | | | | | | | | | |
| 0.Fire Service Inspections | | | | | | | | | | | | | | | |
| Fire Service Inspections | | | | | | | | | | | | | | | |
| Fire Service Inspections | | | | | | | | | | | | | | | |
| FSD1000 | Complete FS defects from 1st Inspection | | | | | | | | | | | | | | |
| FSD1010 | FS taskforce inspections | | | | | | | | | | | | | | |
| FSD1020 | Additional works - AVAS systems | | | | | | | | | | | | | | |
| FSD1030 | Additional works - BSMT AHU Room Detectors | | | | | | | | | | | | | | |
| FSD1035 | Additional works - Probe detetors (AHU Plantroom) | | | | | | | | | | | | | | |
| FSD1040 | Final FS rehearsal tests/make ready for FS re inspection | █ | █ | █ | █ | | | | | | | | | | |
| FSD1050 | Request FS re-inspecton (excluding EVA + SFH) | | | | | | | | | | | | | | |
| FSD1055 | FS Review Period | | | | | | | | | | | | | | |
| FSD1060 | FS reinspection(s) (excluding EVA+SFH) | | █ | █ | █ | █ | █ | █ | █ | █ | █ | █ | █ | █ | █ |
| FSD1071 | FS reinspection for EVA+SFH | | | | | | | | █ | | | | | | |
| FSD1072 | EVA & SFH completion including FS Inspection | | | | | | | | | | ◆ | | | | |
| FSD1072a | FS Review | | | | | | | | | | █ | █ | | | |
| FSD1080 | FS Issue fire certification | | | | | | | | | | | ◆ | | | |
| FSD1090 | TPIDC/AP/RSE Inspection | | | | | | | | | | | █ | █ | █ | █ |
| FSD1100 | OP Obtained | | | | | | | | | | | | | ◆ | |
| FSD1110 | Complete o/s items during Maintenance Period | | | | | | | | | | | | | | |
| 1.External Works | | | | | | | | | | | | | | | |
| External Staircases | | | | | | | | | | | | | | | |
| External Works | | | | | | | | | | | | | | | |
| PCB - East | | | | | | | | | | | | | | | |
| PCB - West | | | | | | | | | | | | | | | |
| PCB - North (Under Row 5) | | | | | | | | | | | | | | | |
| PCB - Site entrance area and northern end (North West) | | | | | | | | | | | | | | | |
| Guard Booths | | | | | | | | | | | | | | | |
| 2.External Toilets | | | | | | | | | | | | | | | |
| Public Toilets | | | | | | | | | | | | | | | |
| RC Structures | | | | | | | | | | | | | | | |
| ABWF Works | | | | | | | | | | | | | | | |
| MEP | | | | | | | | | | | | | | | |
| Roof | | | | | | | | | | | | | | | |
| 3.Covered Walkway | | | | | | | | | | | | | | | |
| Covered Walkway | | | | | | | | | | | | | | | |
| South | | | | | | | | | | | | | | | |
| North | | | | | | | | | | | | | | | |
| 4.Vertical Circulation | | | | | | | | | | | | | | | |
| Vertical Circulation | | | | | | | | | | | | | | | |
| Eastern Vertical Circulation | | | | | | | | | | | | | | | |
| Western Vertical Circulation | | | | | | | | | | | | | | | |
| 5.Smoke Vent and Delivery Hatch | | | | | | | | | | | | | | | |
| Smoke Vent and Delivery Hatch | | | | | | | | | | | | | | | |
| 6.Refuse Collection Point | | | | | | | | | | | | | | | |
| Refuse Collection Building | | | | | | | | | | | | | | | |

█ Remaining Level of Effort
█ Remaining Work
█ Actual Work
█ Critical Remaining Work
◆ Milestone



■ Remaining Level of Effort
 ■ Remaining Work
 ◆ Milestone
 ■ Actual Work
 ■ Critical Remaining Work

| Activity ID | Activity Name | March 2018 | | | | April 2018 | | | | May 2018 | | | | 2018 | |
|---|---|------------|----|----|----|------------|----|----|----|----------|----|----|----|------|----|
| | | 04 | 11 | 18 | 25 | 01 | 08 | 15 | 22 | 29 | 06 | 13 | 20 | 27 | 31 |
| Kiosks & Booths | | | | | | | | | | | | | | | |
| Red & Green Channels | | | | | | | | | | | | | | | |
| A26132 | Red & Green Channel - Building Steel / Glazing | | | | | | | | | | | | | | |
| A26133 | Red & Green Channel - Critical Room - ABWF | | | | | | | | | | | | | | |
| A26134 | Red & Green Channel - Other Room - MEP | | | | | | | | | | | | | | |
| A26135 | Red & Green Channel - Other Room - ABWF | | | | | | | | | | | | | | |
| A26136 | Red & Green Channel - Critical Room - MEP | | | | | | | | | | | | | | |
| A26137 | Red & Green Channel - Building Steel / Glazing | | | | | | | | | | | | | | |
| A26137a | Red & Green Channel - Hanging TV frames | | | | | | | | | | | | | | |
| A26138 | Red & Green Channel - Critical Room - ABWF | | | | | | | | | | | | | | |
| A26139 | Red & Green Channel - Critical Room - MEP | | | | | | | | | | | | | | |
| A26140 | Red & Green Channel - Other Room - MEP | | | | | | | | | | | | | | |
| A26141 | Red & Green Channel - Other Room - ABWF | | | | | | | | | | | | | | |
| 10. Balustrade | | | | | | | | | | | | | | | |
| Balustrade | | | | | | | | | | | | | | | |
| Internal | | | | | | | | | | | | | | | |
| Footbridges | | | | | | | | | | | | | | | |
| 11. Roof Works | | | | | | | | | | | | | | | |
| High Level Works (Baffle/AL6) | | | | | | | | | | | | | | | |
| Roof Cladding & Glazing | | | | | | | | | | | | | | | |
| Southern Drop Off Deck | | | | | | | | | | | | | | | |
| SDO Deck Works | | | | | | | | | | | | | | | |
| EVA and Stage 1 | | | | | | | | | | | | | | | |
| Stage 2 (DOD North West) | | | | | | | | | | | | | | | |
| Stage 3 (DOD South West) | | | | | | | | | | | | | | | |
| Stage 4 (DOD East) | | | | | | | | | | | | | | | |
| Movement Joint | | | | | | | | | | | | | | | |
| Facade Programme | | | | | | | | | | | | | | | |
| Facade | | | | | | | | | | | | | | | |
| Genset Building | | | | | | | | | | | | | | | |
| Sea Water Pump House | | | | | | | | | | | | | | | |
| Testing and Commissioning | | | | | | | | | | | | | | | |
| Electrical Systems | | | | | | | | | | | | | | | |
| CLP Tx Power & LV Sub-mains Power-On | | | | | | | | | | | | | | | |
| EL1000 | C3 handover for Remaining External Cable Duct Routes | | | | | | | | | | | | | | |
| EL1010 | Complete Balance of Submains Cabling to External Areas incl C2 & C3 areas | | | | | | | | | | | | | | |
| EL1020 | Progressively Energise Outgoing Circuits from LV switchboards - External Areas incl C2&C3 | | | | | | | | | | | | | | |
| EL1030 | LV Switchboards - Final Interfacing T&C with SCADA system | | | | | | | | | | | | | | |
| Electrical Sub-mains Installation & Final Distribution | | | | | | | | | | | | | | | |
| EL1040 | Complete Installation CBS Lighting Control for Emergency FS Lighting (26 no. sets): | | | | | | | | | | | | | | |
| EL1050 | Final T&C: CBS Lighting Control fo FS Related Lighting Installations | | | | | | | | | | | | | | |
| EL1060 | SCADA Interfacing with CBS and Final T&C | | | | | | | | | | | | | | |
| Lighting and Small Power | | | | | | | | | | | | | | | |
| EL1070 | Non-FS: Lighting & Small Power Final Circuit Testing / Progressive Switch Lights On | | | | | | | | | | | | | | |
| EL1080 | Non-FS : Lighting & Small Power - Final Lighting Control T&C and Lux Level Checks | | | | | | | | | | | | | | |
| EL1090 | Non-FS: Lighting & Small Power Final Circuit Testing / Progressive Switch Lights On | | | | | | | | | | | | | | |
| EL1100 | Non-FS : Lighting & Small Power - Final Lighting Control T&C and Lux Level Checks | | | | | | | | | | | | | | |

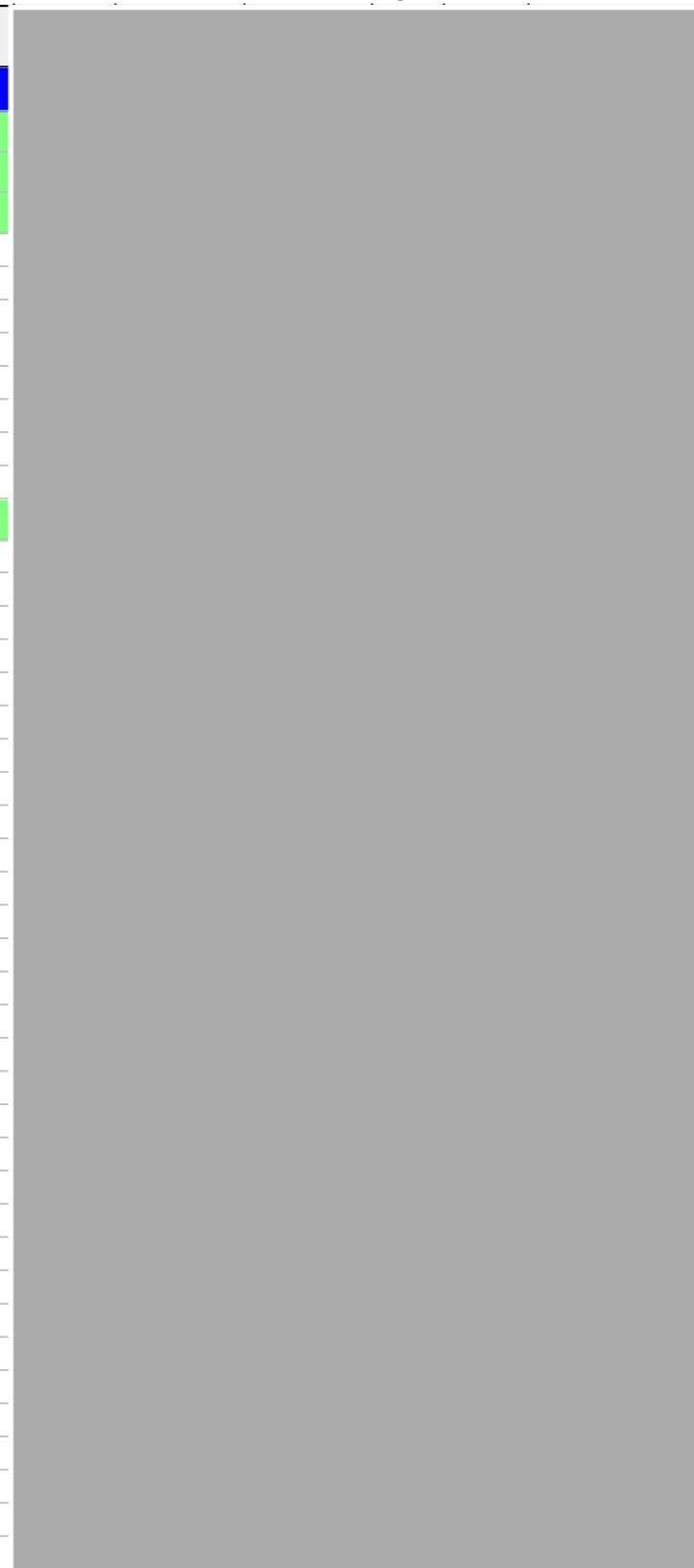
■ Remaining Level of Effort
 ■ Remaining Work
 ◆ Milestone
 ■ Actual Work
 ■ Critical Remaining Work

| Activity ID | Activity Name | 1.03 Aecom Output | | | | | | | | | | | | 2018 | | |
|--|--|-------------------|----|----|----|------------|----|----|----|----------|----|----|----|------|----|--|
| | | March 2018 | | | | April 2018 | | | | May 2018 | | | | | | |
| | | 04 | 11 | 18 | 25 | 01 | 08 | 15 | 22 | 29 | 06 | 13 | 20 | 27 | 31 | |
| EL1110 | Non-FS: Lighting & Small Power Final Circuit Testing / Progressive Switch Lights On | █ | | | | | | | | | | | | | | |
| EL1120 | Non-FS : Lighting & Small Power - Final Lighting Control T&C and Lux Level Checks | | | █ | | | | | | | █ | | | | | |
| EL1130 | Non-FS: Lighting & Small Power Final Circuit Testing / Progressive Switch Lights On | █ | | | | | | | | | | | | | | |
| EL1140 | Non-FS : Lighting & Small Power - Final Lighting Control T&C and Lux Level Checks | █ | | | | | | | | █ | | | | | | |
| UPS Systems - Final T&C: | | | | | | | | | | | | | | | | |
| EL1150 | Full Load Test and Functional T&C | | | | | | | | | | | | | | | |
| EL1160 | Interfacing with SCADA | █ | | | | | | | | █ | | | | | | |
| Emergency Generator & Associated Diesel Fuel Supply systems | | | | | | | | | | | | | | | | |
| EL1170 | Fire Service Generators (Zone C & G) Final T&C and Interfacing with SCADA | | | | | | | | | | | | | | | |
| EL1180 | Fire Service Generators (Zone A, D & J) Final T&C and Interfacing with SCADA | | | | | | | | | | | | | | | |
| EL1190 | Emergency Generators (3no at EGB) Final T&C and Interfacing with SCADA | | | | | | | | | | | | | | | |
| Other "Misc" Electrical Systems | | | | | | | | | | | | | | | | |
| EL1200 | Earthing System - Final T&C | █ | | | | | | | | █ | | | | | | |
| EL1210 | Lightning Protection System - Final T&C | █ | | | | | | | | | | | | | | |
| EL1220 | SCADA System Interfacing with LV Sw Board and PQM Energy Mgt system | █ | | | | | | | | █ | | | | | | |
| MVAC Systems | | | | | | | | | | | | | | | | |
| Chiller Plant & Associated Chilled & Heating Water Distribution | | | | | | | | | | | | | | | | |
| MV1000 | Stage 1 T&C for Chilled Water Circuit to enable Conditioned Wild Air | | | | | | | | | | | | | | | |
| MV1010 | Progressive Energise Chiller Plant MCC's | | | | | | | | | | | | | | | |
| MV1020 | Chilled Water - Primary & Secondary Water Circuit Flushing & Chemical Cleaning | | | | | | | | | | | | | | | |
| MV1020a | Chilled Water - Primary & Secondary Water Circuit Flushing & Chemical Cleaning - remaining | █ | | | | | | | | █ | | | | | | |
| MV1030 | Chiller Primary Water Circuit By-pass Loops Re-instatement following flushing | | | | | | | | | | | | | | | |
| MV1040 | Chiller Secondary Water Circuit By-pass Loops at AHU's and Hx Re-instatement | | | | | | | | | | | | | | | |
| MV1050 | Chilled Water Pumps - Functional and Performance Tests | | | | | | | | | | | | | | | |
| MV1050a | Chilled Water Pumps - Functional and Performance Tests - Remaining | █ | | | | | | | | █ | | | | | | |
| MV1060 | Chilled Water System - Ancilliary Equipment T&C | | | | | | | | | | | | | | | |
| MV1060a | Chilled Water System - Ancilliary Equipment T&C - Remaining | █ | | | | | | | | █ | | | | | | |
| MV1070 | Chiller 1 & 2 Initial start-up checks (with Chiller supplier) | | | | | | | | | | | | | | | |
| MV1080 | Chiller 3 to 8 Initial start-up checks (with Chiller supplier) | | | | | | | | | | | | | | | |
| MV1090 | Light Chiller 1 to 3 Initial start-up checks (with Chiller supplier) | | | | | | | | | | | | | | | |
| MV1100 | Condensor Seawater Supply Available | | | | | | | | | | | | | | | |
| MV1110 | Target Chillers 1 & 2 Chillers Available and Chilled Water ON (In Manual Mode) | | | | | | | | | | | | | | | |
| MV1120 | Target ALL Chillers Available (In Manual Mode) | | | | | | | | | | | | | | | |
| MV1130 | Chilled Water - Secondary Water Circuit Flushing & Chemical Cleaning - CUE | | | | | | | | | | | | | | | |
| MV1140 | Chiller Secondary Water Circuit Remove By-pass Loops - CUE | | | | | | | | | | | | | | | |
| MV1620 | Chilled Water Riser Branches local flushing | | | | | | | | | | | | | | | |
| MV1630 | CHW Riser chemical treatment and cleaning | | | | | | | | | | | | | | | |
| MV1640 | Complete balance CW,HW pwk - Flushing , Chem Clean and Final Balance | █ | | | | | | | | █ | | | | | | |
| Chilled Water and Sea Water System SCADA T&C | | | | | | | | | | | | | | | | |
| MV1150 | Progressive Power On to SCADA PLC Panels | | | | | | | | | | | | | | | |
| MV1160 | SWPH & Chiller Plant - End to End SCADA Wiring - Point Testing from PLC to Field Equipm | █ | | | | | | | | █ | | | | | | |
| MV1170 | SWPH & Ciller Plant - SCADA Functional Testing | █ | | | | | | | | | | | | | | |
| MV1180 | Chiller Plant & SWP - SCADA Chiller Start-up/Shut Down Programme Checking | █ | | | | | | | | | | | | | | |
| MV1190 | Chiller & SWP Plant - SCADA Integrated Equipment Tests | █ | | | | | | | | | | | | | | |
| MV1200 | Chiller & SWP Plant - SCADA Operation of System in Full Auto Mode | | | | | | | | | | | | | | | |
| MV1210 | Chiller & SWP Plant - SCADA "Fine Tune" System Settings / Operation | | | | | | | | | | | | | | | |
| Heating Water Distribution - T&C | | | | | | | | | | | | | | | | |
| MV1220 | Heating Water Pumps - T&C / Pump Alignment | | | | | | | | | | | | | | | |
| MV1230 | Primary & Secondary Heating Water Pipe Flushing and Chemical Cleaning | █ | | | | | | | | █ | | | | | | |
| MV1240 | Stage 1 Water Balancing - Main Pipework Basement level and up to G/F Riser | █ | | | | | | | | █ | | | | | | |

█ Remaining Level of Effort
 █ Remaining Work
 ◆ Milestone
█ Actual Work
 █ Critical Remaining Work

| Activity ID | Activity Name | March 2018 | | | | April 2018 | | | | May 2018 | | | | 2018 | |
|--|--|------------|----|----|----|------------|----|----|----|----------|----|----|----|------|----|
| | | 04 | 11 | 18 | 25 | 01 | 08 | 15 | 22 | 29 | 06 | 13 | 20 | 27 | 31 |
| MV1250 | Complete balance HTG Pwk - Flushing, Chem. Clean and Final Balance | | | | | | | | | | | | | | |
| Heat Pumps - Initial start-up SAT checks & SCADA T&C | | | | | | | | | | | | | | | |
| MV1260 | Heat Pump 1 to 4 Initial start-up checks (with Chiller supplier) | | | | | | | | | | | | | | |
| MV1270 | Progressive Power On to SCADA PLC Panels | | | | | | | | | | | | | | |
| MV1280 | Heat Pump - End to End SCADA Wiring - Point Testing from PLC to Field Eq. | | | | | | | | | | | | | | |
| MV1290 | Heat Pump System - SCADA Functional Testing | | | | | | | | | | | | | | |
| MV1300 | Heat Pump - SCADA Heat Pump Start-up/Shut Down Programme Checking | | | | | | | | | | | | | | |
| MV1310 | Heat Pump system- SCADA Integrated Equipment Tests | | | | | | | | | | | | | | |
| MV1320 | Heat Pump - SCADA Operation of System in Full Auto Mode | | | | | | | | | | | | | | |
| AHU, Fans & Associated Distribution (including VAV, FCU, etc) B/F | | | | | | | | | | | | | | | |
| MV1340 | FCU Installations at LV Switch Rooms and Elect/ELV Rooms | | | | | | | | | | | | | | |
| MV1350 | Misc Ventilation Systems (various areas) | | | | | | | | | | | | | | |
| All Cabins (G/F to Roof) - incls AHU+Duct Riser+ VAV(if applicable)+ Final Air Grille | | | | | | | | | | | | | | | |
| MV1360 | BOH Cabin AHU - Chilled water Available - Initial AHU Start-up T&C | | | | | | | | | | | | | | |
| MV1370 | BOH Cabin AHU & Main Distribution Ducts - Initial System Air Balance for conditioned "Wild A | | | | | | | | | | | | | | |
| MV1380 | Target ALL Cabin AHU's Operational - providing conditioned "Wild Air" to Cabins | | | | | | | | | | | | | | |
| MV1390 | Cabins VAV Box -Progressive Power On for VAV Box & SCADA network | | | | | | | | | | | | | | |
| MV1400 | BOH Cabin AHU - Complete Final Airside Balancing for Main Duct Runs and at VAV boxes | | | | | | | | | | | | | | |
| MV1410 | BOH Cabins AHU & VAV -Final SCADA Interfacing & Control for Air-side Equipment | | | | | | | | | | | | | | |
| MV1420 | BOH Cabin AHU & VAV - Put SCADA in Auto / "Fine Tune" System Settings / Operation | | | | | | | | | | | | | | |
| MV1430 | BOH cabins : FCU Installations at BOH Elect/ELV Rooms | | | | | | | | | | | | | | |
| MV1440 | CRAC System for Critical Rooms (Split Refrig. & Waterside Units) incl SCADA Interfacing | | | | | | | | | | | | | | |
| MV1450 | BOH Cabins : Misc Ventilation Systems (various areas) | | | | | | | | | | | | | | |
| G/F FOH Concourse - incls AHU+Duct Riser+ Drum Louvre /Final Air Grille | | | | | | | | | | | | | | | |
| MV1460 | FOH AHU - Chilled Water Available - Initial AHU Start-up T&C | | | | | | | | | | | | | | |
| MV1470 | FOH AHU & Main Distribution Ducts - Initial System Air Balance for "Wild Air" | | | | | | | | | | | | | | |
| MV1480 | Target 50% of FOH AHU's Operational - providing conditioned "Wild Air" to FOH | | | | | | | | | | | | | | |
| MV1490 | Target 100% of FOH AHU's Operational - providing conditioned "Wild Air" to FOH | | | | | | | | | | | | | | |
| MV1500 | FOH AHU, Distribution Duct & Drum Louvre - Final Airside Balancing for Main Duct Runs | | | | | | | | | | | | | | |
| MV1510 | FOH Areas: AHU - Final SCADA Interfacing & Control for Air-side Equipment | | | | | | | | | | | | | | |
| MV1520 | FOH Areas - Put AHU SCADA in Auto / "Fine Tune" System Settings / Operation | | | | | | | | | | | | | | |
| MV1530 | R&G Channel, Kiosks and Retail: MVAC Installations T&C | | | | | | | | | | | | | | |
| 1/F FOH Concourse - incls AHU+Duct Riser+ VAV(if applicable)+ Final Air Grille | | | | | | | | | | | | | | | |
| MV1540 | FOH AHU - Chilled Water Available - Initial AHU Start-up T&C | | | | | | | | | | | | | | |
| MV1550 | FOH AHU & Main Distribution Ducts - Initial System Air Balance for "Wild Air" | | | | | | | | | | | | | | |
| MV1560 | Target 50% of FOH AHU's Operational - providing conditioned "Wild Air" to FOH | | | | | | | | | | | | | | |
| MV1570 | Target 100% of FOH AHU's Operational - providing conditioned "Wild Air" to FOH | | | | | | | | | | | | | | |
| MV1580 | FOH AHU, Distribution Duct & Drum Louvre - Final Airside Balancing for Main Duct Runs | | | | | | | | | | | | | | |
| MV1590 | FOH Areas: AHU - Final SCADA Interfacing & Control for Air-side Equipment | | | | | | | | | | | | | | |
| MV1600 | FOH Areas - Put AHU SCADA in Auto / "Fine Tune" System Settings / Operation | | | | | | | | | | | | | | |
| MV1610 | R&G Channel, Kiosks and Retail: MVAC Installations T&C | | | | | | | | | | | | | | |

| Activity ID | Activity Name |
|--|--|
| Hong Kong-Zhuhai_Macao Bridge Hong Kong Boundary Crossing F | |
| Key Dates | |
| Interface Activities | |
| Site and Facility Inspection | |
| JS1200 | Pre Site and Facility Inspection by Contractor at Location 4 - Deg2 |
| JS1210 | Joint Site and Facility Inspection with Interface Contractor at Location 4 - Deg2 |
| JS1620 | Pre Site and Facility Inspection by Contractor at Location 14 - Deg2 |
| JS1630 | Joint Site and Facility Inspection with Interface Contractor at Location 14 - Deg2 |
| JS1760 | Pre Site and Facility Inspection by Contractor at Location 18 - Deg1 |
| JS1770 | Joint Site and Facility Inspection with Interface Contractor at Location 18 - Deg1 |
| JS1780 | Pre Site and Facility Inspection by Contractor at Location 18 - Deg2 |
| JS1790 | Joint Site and Facility Inspection with Interface Contractor at Location 18 - Deg2 |
| Access Dates | |
| AD1000 | Location 1(PCB (001) Basement)-Deg1 (270d) |
| AD1010 | Location 1(PCB (001) Basement)-Deg2 (380d) |
| AD1020 | Location 1(PCB (001) ELV Room (Grid Line E3))-Deg1 (270d) |
| AD1030 | Location 1(PCB (001) ELV Room (Grid Line E3))-Deg2 (380d) |
| AD1040 | Location 2(PCB (001) First Floor Main Server Room)-Deg1 (330d) |
| AD1050 | Location 2(PCB (001) First Floor Main Server Room)-Deg2 (380d) |
| AD1060 | Location 2(PCB (001) First Floor Main Server Room) - For Server Installation - Deg2 (380d) |
| AD1070 | Location 2(PCB (001) Ground Floor ELV Room (Grid Line E3)) - Deg1 (330d) |
| AD1080 | Location 2(PCB (001) Ground Floor DOH Port Health Control Room (Grid Line BD5)) - Deg1 (330d) |
| AD1090 | Location 2(PCB (001) Ground Floor DOH Port Health Control Room (Grid Line BD5)) - Deg2 (380d) |
| AD1130 | Location 3(Inbd Cargo Exam Bldg (037) Platform Control Room)-Deg2 (500d) |
| AD1150 | Location 3(Inbd Cargo Exam Bldg (037) Inspector Offices 128,129,130,131,128,129,14) |
| AD1170 | Location 3a(Inbd Cargo Exam Bldg (037) ROCARS Room)-Deg2 (480d) |
| AD1190 | Location 3a(Inbd Cargo Exam Bldg (037) Main Server Room)-Deg2 (480d) |
| AD1200 | Location 3a(Inbd Cargo Exam Bldg (037) Main Server Room) - For Server installation - Deg2 (480d) |
| AD1220 | Location 4(Outbd Cargo Exam Bldg (023))-Deg2 (680d) |
| AD1240 | Location 4a(Outbd Cargo Exam Bldg (023))-Deg2 (630d) |
| AD1270 | Location 6(Common Utility Enclosure & Staff Subway)-Deg1 (400d) |
| AD1290 | Location 7(Common Utility Enclosure & Staff Subway)-Deg1 (270d) |
| AD1300 | Location 8(Inbd Private Car Annex (025))-Deg1 (430d) |
| AD1310 | Location 8(Inbd Private Car Annex (025))-Deg2 (580d) |
| AD1320 | Location 8(Inbd Private Car Annex (025) Canopy)-Deg1 (430d) |
| AD1330 | Location 8(Inbd Private Car Annex (025) Canopy)-Deg2 (580d) |
| AD1340 | Location 9(Outbd Private Car Annex (032))-Deg1 (520d) |
| AD1350 | Location 9(Outbd Private Car Annex (032))-Deg2 (660d) |
| AD1360 | Location 9(Outbd Private Car Annex (032) Canopy)-Deg1 (520d) |
| AD1370 | Location 9(Outbd Private Car Annex (032) Canopy)-Deg2 (660d) |
| AD1501 | Location 12(Inbd Private Car Kiosks(027))-Deg1 (400d) Phase 2 |
| AD1510 | Location 12(Inbd Private Car Kiosks(027))-Deg2 (480d) Phase 1 |
| AD1511 | Location 12(Inbd Private Car Kiosks(027))-Deg2 (480d) Phase 2 |
| AD1521 | Location 12(Inbd Private Car Kiosks(027) Canopy)-Deg1 (400d) Phase 2 |



| 2015 | | | 2016 | | | | 2017 | | | | 2018 | | | | 2019 | | |
|---|----|----|------|----|----|----|------|----|----|----|------|----|----|----|------|----|----|
| Q2 | Q3 | Q4 | Q1 | Q2 | Q3 | Q4 | Q1 | Q2 | Q3 | Q4 | Q1 | Q2 | Q3 | Q4 | Q1 | Q2 | Q3 |
| 22-Oct-17, Hong Kong-Zhuhai_Macao Bridge 23-Jun-17, Site and Facility Inspection 24-Aug-17, Access Dates Location 1(PCB (001) Basement)-Deg1 (270d), 31-May-17 Location 1(PCB (001) Basement)-Deg2 (380d), 15-Jun-17 Location 1(PCB (001) ELV Room (Grid Line E3))-Deg1 (270d), 31-May-17 Location 1(PCB (001) ELV Room (Grid Line E3))-Deg2 (380d), 15-Jun-17 Location 2(PCB (001) First Floor Main Server Room)-Deg1 (330d), 31-May-17 Location 2(PCB (001) First Floor Main Server Room)-Deg2 (380d), 15-Jun-17 Location 2(PCB (001) First Floor Main Server Room) - For Server Installation - Deg2 (380d), 15-Jun-17 Location 2(PCB (001) Ground Floor ELV Room (Grid Line E3)) - Deg1 (330d), 31-May-17 Location 2(PCB (001) Ground Floor DOH Port Health Control Room (Grid Line BD5)) - Deg1 (330d), 31-May-17 Location 2(PCB (001) Ground Floor DOH Port Health Control Room (Grid Line BD5)) - Deg2 (380d), 15-Jun-17 Location 3(Inbd Cargo Exam Bldg (037) Platform Control Room)-Deg2 (500d), 15-Jun-17 Location 3(Inbd Cargo Exam Bldg (037) Inspector Offices 128,129,130,131,128,129,14), 15-Jun-17 Location 3a(Inbd Cargo Exam Bldg (037) ROCARS Room)-Deg2 (480d), 15-Jun-17 Location 3a(Inbd Cargo Exam Bldg (037) Main Server Room)-Deg2 (480d), 15-Jun-17 Location 3a(Inbd Cargo Exam Bldg (037) Main Server Room) - For Server installation - Deg2 (480d), 15-Jun-17 Location 4(Outbd Cargo Exam Bldg (023))-Deg2 (680d), 15-Jun-17 Location 4a(Outbd Cargo Exam Bldg (023))-Deg2 (630d), 15-Jun-17 Location 6(Common Utility Enclosure & Staff Subway)-Deg1 (400d), 15-Jun-17 Location 7(Common Utility Enclosure & Staff Subway)-Deg1 (270d), 15-Jun-17 Location 8(Inbd Private Car Annex (025))-Deg1 (430d), 15-Jun-17 Location 8(Inbd Private Car Annex (025))-Deg2 (580d), 15-Jun-17 Location 8(Inbd Private Car Annex (025) Canopy)-Deg1 (430d), 15-Jun-17 Location 8(Inbd Private Car Annex (025) Canopy)-Deg2 (580d), 15-Jun-17 Location 9(Outbd Private Car Annex (032))-Deg1 (520d), 15-Jun-17 Location 9(Outbd Private Car Annex (032))-Deg2 (660d), 15-Jun-17 Location 9(Outbd Private Car Annex (032) Canopy)-Deg1 (520d), 15-Jun-17 Location 9(Outbd Private Car Annex (032) Canopy)-Deg2 (660d), 15-Jun-17 Location 12(Inbd Private Car Kiosks(027))-Deg1 (400d) Phase 2, 15-Jun-17 Location 12(Inbd Private Car Kiosks(027))-Deg2 (480d) Phase 1, 15-Jun-17 Location 12(Inbd Private Car Kiosks(027))-Deg2 (480d) Phase 2, 15-Jun-17 Location 12(Inbd Private Car Kiosks(027) Canopy)-Deg1 (400d) Phase 2, 15-Jun-17 | | | | | | | | | | | | | | | | | |

Programme No.: HZMB-DWP
 Data Date: 14-Aug-15

- Actual Level of Effort
- Primary Baseline
- Actual Work
- Remaining Work
- Critical Remaining Work
- Baseline Milestone
- Milestone

summary

Hong Kong-Zhuhai-Macao Bridge
 Hong Kong Boundary Crossing
 Facilities - Automatic Vehicle
 Clearance Support System (AVCSS)

| Date | Revision | Checked | Approved |
|-----------|------------|---------|----------|
| 14-Nov-16 | Rev.: 0 | WC | LC |
| 10-Mar-17 | Rev.: 1.0a | WC | LC |
| 5-May-17 | Rev.: 1.0b | WC | LC |

| Activity ID | Activity Name | 2015 | | | | | | | | | | | | 2016 | | | | 2017 | | | | 2018 | | | | 2019 | | |
|--|---|------|----|----|----|----|----|----|----|----|----|----|----|------|----|----|----|------|----|----|----|------|--|--|--|------|--|--|
| | | Q2 | Q3 | Q4 | Q1 | Q2 | Q3 | Q4 | Q1 | Q2 | Q3 | Q4 | Q1 | Q2 | Q3 | Q4 | Q1 | Q2 | Q3 | Q1 | Q2 | Q3 | | | | | | |
| AD1530 | Location 12(Inbd Private Car Kiosks(027) Canopy)-Deg2 (480d) Phase 1 | | | | | | | | | | | | | | | | | | | | | | | | | | | |
| AD1531 | Location 12(Inbd Private Car Kiosks(027) Canopy)-Deg2 (480d) Phase 2 | | | | | | | | | | | | | | | | | | | | | | | | | | | |
| AD1540 | Location 12(Inbd GV Kiosks (028))-Deg1 (400d) Phase 1 | | | | | | | | | | | | | | | | | | | | | | | | | | | |
| AD1541 | Location 12(Inbd GV Kiosks (028))-Deg1 (400d) Phase 2 | | | | | | | | | | | | | | | | | | | | | | | | | | | |
| AD1550 | Location 12(Inbd GV Kiosks (028))-Deg2 (480d) Phase 1 | | | | | | | | | | | | | | | | | | | | | | | | | | | |
| AD1551 | Location 12(Inbd GV Kiosks (028))-Deg2 (480d) Phase 2 | | | | | | | | | | | | | | | | | | | | | | | | | | | |
| AD1560 | Location 12(Inbd GV Kiosks (028) Canopy)-Deg1 (400d) Phase 1 | | | | | | | | | | | | | | | | | | | | | | | | | | | |
| AD1561 | Location 12(Inbd GV Kiosks (028) Canopy)-Deg1 (400d) Phase 2 | | | | | | | | | | | | | | | | | | | | | | | | | | | |
| AD1570 | Location 12(Inbd GV Kiosks (028) Canopy)-Deg2 (480d) Phase 1 | | | | | | | | | | | | | | | | | | | | | | | | | | | |
| AD1571 | Location 12(Inbd GV Kiosks (028) Canopy)-Deg2 (480d) Phase 2 | | | | | | | | | | | | | | | | | | | | | | | | | | | |
| AD1580 | Location 12(Outbd GV Kiosks (029))-Deg1 (400d) Phase 1 | | | | | | | | | | | | | | | | | | | | | | | | | | | |
| AD1581 | Location 12(Outbd GV Kiosks (029))-Deg1 (400d) Phase 2 | | | | | | | | | | | | | | | | | | | | | | | | | | | |
| AD1590 | Location 12(Outbd GV Kiosks (029))-Deg2 (480d) Phase 1 | | | | | | | | | | | | | | | | | | | | | | | | | | | |
| AD1591 | Location 12(Outbd GV Kiosks (029))-Deg2 (480d) Phase 2 | | | | | | | | | | | | | | | | | | | | | | | | | | | |
| AD1600 | Location 12(Outbd GV Kiosks (029) Canopy)-Deg1 (400d) Phase 1 | | | | | | | | | | | | | | | | | | | | | | | | | | | |
| AD1601 | Location 12(Outbd GV Kiosks (029) Canopy)-Deg1 (400d) Phase 2 | | | | | | | | | | | | | | | | | | | | | | | | | | | |
| AD1610 | Location 12(Outbd GV Kiosks (029) Canopy)-Deg2 (480d) Phase 1 | | | | | | | | | | | | | | | | | | | | | | | | | | | |
| AD1611 | Location 12(Outbd GV Kiosks (029) Canopy)-Deg2 (480d) Phase 2 | | | | | | | | | | | | | | | | | | | | | | | | | | | |
| AD1620 | Location 13(Outbd Private Car Kiosks (030))-Deg1 (480d) Phase 1 | | | | | | | | | | | | | | | | | | | | | | | | | | | |
| AD1630 | Location 13(Outbd Private Car Kiosks (030))-Deg2 (550d) Phase 1 | | | | | | | | | | | | | | | | | | | | | | | | | | | |
| AD1640 | Location 13(Outbd Private Car Kiosks (030) Canopy)-Deg1 (480d) Phase 1 | | | | | | | | | | | | | | | | | | | | | | | | | | | |
| AD1650 | Location 13(Outbd Private Car Kiosks (030) Canopy)-Deg2 (550d) Phase 1 | | | | | | | | | | | | | | | | | | | | | | | | | | | |
| AD1660 | Location 14(Future-Outbd/Inbd Private Car Kiosks)-Deg1 (610d) | | | | | | | | | | | | | | | | | | | | | | | | | | | |
| AD1670 | Location 14(Future-Outbd/Inbd Private Car Kiosks)-Deg2 (680d) | | | | | | | | | | | | | | | | | | | | | | | | | | | |
| AD1700 | Location 16(Outbd Traffic Control Kiosk (101))-Deg1 (400d) | | | | | | | | | | | | | | | | | | | | | | | | | | | |
| AD1710 | Location 16(Outbd Traffic Control Kiosk (101))-Deg2 (480d) | | | | | | | | | | | | | | | | | | | | | | | | | | | |
| AD1740 | Location 18(Outbd Private Car Exam Bldg(024))-Deg1 (-) | | | | | | | | | | | | | | | | | | | | | | | | | | | |
| AD1750 | Location 18(Outbd Private Car Exam Bldg(024))-Deg2 (670d) | | | | | | | | | | | | | | | | | | | | | | | | | | | |
| AD1780 | (by C03) Underground Ducting (UUD1.1) between CUE and Inbd Cargo Exam Bldg (0 | | | | | | | | | | | | | | | | | | | | | | | | | | | |
| AD1790 | (by C03) (UUD1.2) between Inbd Cargo Exam Bldg South (037[S]) and DOH Cargo C | | | | | | | | | | | | | | | | | | | | | | | | | | | |
| AD1800 | (by C03) (UUD2) between Inbd Cargo Exam Bldg North (037[N]) and Inbd Vehicle Cle | | | | | | | | | | | | | | | | | | | | | | | | | | | |
| AD1810 | (by C03) (UUD9.1) btw Inbd Cargo Exam Bldg S.(037[S]) & Inbd PC Exam Bldg(033) & | | | | | | | | | | | | | | | | | | | | | | | | | | | |
| AD1820 | (by C03) (UUD9.3) between Inbd Private Car Exam Bldg (033) and Inbd Vehicle Clear | | | | | | | | | | | | | | | | | | | | | | | | | | | |
| AD1830 | (by C03) (UUD9.2) between Inbd Private Car Exam Bldg (033) and Inbd Vehicle Clear | | | | | | | | | | | | | | | | | | | | | | | | | | | |
| AD1840 | (by C03) Underground Ducting (UUD3.1) between CUE to Outbd Cargo Exam Bldg (0 | | | | | | | | | | | | | | | | | | | | | | | | | | | |
| AD1850 | (by C03) (UUD3.2) btw Outbd Car Exam Bldg (023) and Outbd PC Exam Bldg (024) ai | | | | | | | | | | | | | | | | | | | | | | | | | | | |
| AD1860 | (byC03) (UUD4.1) between Outbd Private Car Exam Bldg (024) and Outbd Vehicle Cle | | | | | | | | | | | | | | | | | | | | | | | | | | | |
| AD1870 | (byC03) (UUD5) between Outbd Car Exam Bldg South (023[S]) and Outbd Vehicle Cle | | | | | | | | | | | | | | | | | | | | | | | | | | | |
| AD1880 | (by C03) Underground Ducting (UUD8) between CUE and Outbd PCA (032) | | | | | | | | | | | | | | | | | | | | | | | | | | | |
| AD1910 | (by C03) Inbound Vehicle Clearance Plaza | | | | | | | | | | | | | | | | | | | | | | | | | | | |
| AD1920 | (by C03) Outbound Vehicle Clearance Plaza | | | | | | | | | | | | | | | | | | | | | | | | | | | |
| <ul style="list-style-type: none"> Interfaces Provisions Mobilization Provisions WA4 Site Erection & Servicing | | | | | | | | | | | | | | | | | | | | | | | | | | | | |

| Programme No.: HZMB-DWP Data Date: 14-Aug-15 | <ul style="list-style-type: none"> Actual Level of Effort Primary Baseline Actual Work Remaining Work Critical Remaining Work Baseline Milestone Milestone | summary | Hong Kong-Zhuhai-Macao Bridge Hong Kong Boundary Crossing Facilities - Automatic Vehicle Clearance Support System (AVCSS) | | <table border="1" style="width: 100%;"> <thead> <tr> <th>Date</th> <th>Revision</th> <th>Checked</th> <th>Approved</th> </tr> </thead> <tbody> <tr> <td>14-Nov-16</td> <td>Rev.: 0</td> <td>WC</td> <td>LC</td> </tr> <tr> <td>10-Mar-17</td> <td>Rev.: 1.0a</td> <td>WC</td> <td>LC</td> </tr> <tr> <td>5-May-17</td> <td>Rev.: 1.0b</td> <td>WC</td> <td>LC</td> </tr> </tbody> </table> | Date | Revision | Checked | Approved | 14-Nov-16 | Rev.: 0 | WC | LC | 10-Mar-17 | Rev.: 1.0a | WC | LC | 5-May-17 | Rev.: 1.0b | WC | LC |
|---|--|---------|--|--|--|------|----------|---------|----------|-----------|---------|----|----|-----------|------------|----|----|----------|------------|----|----|
| Date | Revision | Checked | Approved | | | | | | | | | | | | | | | | | | |
| 14-Nov-16 | Rev.: 0 | WC | LC | | | | | | | | | | | | | | | | | | |
| 10-Mar-17 | Rev.: 1.0a | WC | LC | | | | | | | | | | | | | | | | | | |
| 5-May-17 | Rev.: 1.0b | WC | LC | | | | | | | | | | | | | | | | | | |

| Activity ID | Activity Name | 2015 | | | | | | | | | | | | 2016 | | | | 2017 | | | | 2018 | | | | 2019 | | |
|-------------|---|------|----|----|----|----|----|----|----|----|----|----|----|------|----|----|----|------|----|----|----|------|--|--|--|------|--|--|
| | | Q2 | Q3 | Q4 | Q1 | Q2 | Q3 | Q4 | Q1 | Q2 | Q3 | Q4 | Q1 | Q2 | Q3 | Q4 | Q1 | Q2 | Q3 | Q1 | Q2 | Q3 | | | | | | |
| | Detailed Design Specification | | | | | | | | | | | | | | | | | | | | | | | | | | | |
| | Construction Design and Management | | | | | | | | | | | | | | | | | | | | | | | | | | | |
| | Supply/Manufacture Mock-up items | | | | | | | | | | | | | | | | | | | | | | | | | | | |
| | Supply/Manufacture prototypes | | | | | | | | | | | | | | | | | | | | | | | | | | | |
| | Software Design, Coding and Testing | | | | | | | | | | | | | | | | | | | | | | | | | | | |
| | Coding | | | | | | | | | | | | | | | | | | | | | | | | | | | |
| | Software System Integration | | | | | | | | | | | | | | | | | | | | | | | | | | | |
| | Prototype & Software Simulation Tests | | | | | | | | | | | | | | | | | | | | | | | | | | | |
| | Procurement - Phase 1 / Section I | | | | | | | | | | | | | | | | | | | | | | | | | | | |
| | Supply/Manufacture products for FAT | | | | | | | | | | | | | | | | | | | | | | | | | | | |
| | Factory Acceptance Test (FAT) | | | | | | | | | | | | | | | | | | | | | | | | | | | |
| | Supply/Manufacture Equipment | | | | | | | | | | | | | | | | | | | | | | | | | | | |
| | Delivery and Bench Acceptance Test for Phase 1/ Section I | | | | | | | | | | | | | | | | | | | | | | | | | | | |
| | Installation - Phase 1 / Section I | | | | | | | | | | | | | | | | | | | | | | | | | | | |
| | Location 1(PCB (001) Basement) | | | | | | | | | | | | | | | | | | | | | | | | | | | |
| EM1920 | L1(001)B/F - Cable Laying and termination at Location 1 and Location 2 | | | | | | | | | | | | | | | | | | | | | | | | | | | |
| | Location 1(PCB (001) ELV Room (Grid Line E3)) | | | | | | | | | | | | | | | | | | | | | | | | | | | |
| EM1940 | L1(001)ELV Rm - Cable Laying and termination at Location 1 and Location 2 | | | | | | | | | | | | | | | | | | | | | | | | | | | |
| | Location 2(PCB (001) Ground Floor ELV Room (Grid Line E3)) | | | | | | | | | | | | | | | | | | | | | | | | | | | |
| EM1960 | L2(001)ELV Rm - Cable Laying and termination at Location 1 and Location 2 | | | | | | | | | | | | | | | | | | | | | | | | | | | |
| | Location 2(PCB (001) Ground Floor DOH Port Health Control Room (Grid Line BD5)) | | | | | | | | | | | | | | | | | | | | | | | | | | | |
| EM1080 | L2(001)Heath Ctrl Rm - Cable Laying and termination at Location 1 and Location 2 | | | | | | | | | | | | | | | | | | | | | | | | | | | |
| EM1100 | L2(001)Heath Ctrl Rm - Cable Splicing and Testing and Labeling | | | | | | | | | | | | | | | | | | | | | | | | | | | |
| EM1120 | L2(001)Health Ctrl Rm - Intercom and PA system Installation | | | | | | | | | | | | | | | | | | | | | | | | | | | |
| EM1140 | L2(001)Heath Ctrl Rm - Intercom and PA system tuning | | | | | | | | | | | | | | | | | | | | | | | | | | | |
| | Location 2(PCB (001) First Floor Main Server Room) | | | | | | | | | | | | | | | | | | | | | | | | | | | |
| EM1000 | L2(001)Main Server Rm - Cable Laying and termination at Location 1 and Location 2 | | | | | | | | | | | | | | | | | | | | | | | | | | | |
| EM1020 | L2(001)Main Server Rm - Cable Splicing and Testing and Labeling | | | | | | | | | | | | | | | | | | | | | | | | | | | |
| EM1040 | L2(001)Main Server Rm - AVCSS Network and Server Installation | | | | | | | | | | | | | | | | | | | | | | | | | | | |
| EM1060 | L2(001)Main Server Rm - AVCSS Network and Server Tuning | | | | | | | | | | | | | | | | | | | | | | | | | | | |
| | Location 3(Inbd Cargo Exam Bldg (037) MDF Room) | | | | | | | | | | | | | | | | | | | | | | | | | | | |
| | Location 3(Inbd Cargo Exam Bldg (037) ELV Room) | | | | | | | | | | | | | | | | | | | | | | | | | | | |
| | Location 3(Inbd Cargo Exam Bldg (037) Inspector Offices 128,129,130,131,128,129,141) | | | | | | | | | | | | | | | | | | | | | | | | | | | |
| EM2020 | L3(037)Inspec Offices - Cable Laying and termination in Location 3 and Location 3a | | | | | | | | | | | | | | | | | | | | | | | | | | | |
| EM2040 | L3(037)Inspec Offices - Cable Splicing and Testing and Labeling | | | | | | | | | | | | | | | | | | | | | | | | | | | |
| EM2060 | L3(037)Inspec Offices - AVCSS SURCON WS and 55" LCD Installation | | | | | | | | | | | | | | | | | | | | | | | | | | | |
| EM2080 | L3(037)Inspec Offices - VTS WS Installation | | | | | | | | | | | | | | | | | | | | | | | | | | | |
| EM2100 | L3(037)Inspec Offices - SURCON and WS Tuning | | | | | | | | | | | | | | | | | | | | | | | | | | | |
| | Location 3(Inbd Cargo Exam Bldg (037) Platform Control Room) | | | | | | | | | | | | | | | | | | | | | | | | | | | |
| EM1160 | L3(037)PLF Ctrl Rm - Cable Laying and termination in Location 3 and Location 3a | | | | | | | | | | | | | | | | | | | | | | | | | | | |
| EM1180 | L3(037)PLF Ctrl Rm - Cable Splicing and Testing and Labeling | | | | | | | | | | | | | | | | | | | | | | | | | | | |
| EM1200 | L3(037)PLF Ctrl Rm - AVCSS SYSCON WS and 55" TV Wall Installation | | | | | | | | | | | | | | | | | | | | | | | | | | | |
| EM1220 | L3(037)PLF Ctrl Rm - AVCSS SYSCON WS Tuning | | | | | | | | | | | | | | | | | | | | | | | | | | | |

01-Sep-17, Installation - Phase 1 / Section I
 22-Jun-17, Location:1(PCB (001),Basement)
 L1(001)B/F - Cable Laying and termination at Location
 22-Jun-17, Location:1(PCB (001),ELV Room (Grid Line
 L1(001)ELV Rm - Cable Laying and termination at Loca
 22-Jun-17, Location:2(PCB (001),Ground Floor ELV R
 L2(001)ELV Rm - Cable Laying and termination at Loca
 18-Aug-17, Location:2(PCB (001),Ground Floor DO
 L2(001)Heath Ctrl Rm - Cable Laying and termination
 L2(001)Heath Ctrl Rm - Cable Splicing and Testing and
 L2(001)Health Ctrl Rm - Intercom and PA system In
 L2(001)Health Ctrl Rm - Intercom and PA system tu
 21-Aug-17, Location:2(PCB (001) First Floor Main
 L2(001)Main Server Rm - Cable Laying and terminatio
 L2(001)Main Server Rm - Cable Splicing and Testing
 L2(001)Main Server Rm - AVCSS Network and Ser
 L2(001)Main Server Rm - AVCSS Network and Se
 07-Aug-17, Location 3(Inbd Cargo Exam Bldg (037
 L3(037)Inspec Offices - Cable Laying and termination i
 L3(037)Inspec Offices - Cable Splicing and Testing and
 L3(037)Inspec Offices - AVCSS SURCON WS and 5
 L3(037)Inspec Offices - VTS WS Installation
 L3(037)Inspec Offices - SURCON and WS Tuning
 07-Aug-17, Location 3(Inbd Cargo Exam Bldg (037
 L3(037)PLF Ctrl Rm - Cable Laying and termination in
 L3(037)PLF Ctrl Rm - Cable Splicing and Testing and
 L3(037)PLF Ctrl Rm - AVCSS SYSCON WS and 55
 L3(037)PLF Ctrl Rm - AVCSS SYSCON WS Tuning

| | | | | | | |
|---|--|--|--|---|---------------------------|----------------------------|
| Programme No.: HZMB-DWP Data Date: 14-Aug-15 | | Hong Kong-Zhuhai-Macao Bridge Hong Kong Boundary Crossing Facilities - Automatic Vehicle Clearance Support System (AVCSS) | Date 14-Nov-16 10-Mar-17 5-May-17 | Revision Rev.: 0 Rev.: 1.0a Rev.: 1.0b | Checked WC WC WC | Approved LC LC LC |
| | | | | | | |

| Activity ID | Activity Name | 2015 | | | 2016 | | | | 2017 | | | | 2018 | | | | 2019 | | |
|---|--|--|----|----|------|----|----|----|------|----|----|----|------|----|----|----|------|----|----|
| | | Q2 | Q3 | Q4 | Q1 | Q2 | Q3 | Q4 | Q1 | Q2 | Q3 | Q4 | Q1 | Q2 | Q3 | Q4 | Q1 | Q2 | Q3 |
| Location 3a(Inbd Cargo Exam Bldg (037) ROCARS Room) | | 07-Aug-17, Location 3a(Inbd Cargo Exam Bldg (037) ROCARS Rm - Cable Laying and termination in Location 3 and Location 3a L3a(037) ROCARS Rm - Cable Laying and termination L3a(037) ROCARS Rm - Cable Splicing and Testing and Labeling L3a(037) ROCARS Rm - AVCSS SYSCON and SURCON and Intercom Installation L3a(037) ROCARS Rm - VTS WS Installation L3a(037) ROCARS Rm - VID WS Installation L3a(037) ROCARS Rm - SURCON and SYSCON and WS Tuning | | | | | | | | | | | | | | | | | |
| EM1240 | L3a(037) ROCARS Rm - Cable Laying and termination in Location 3 and Location 3a | | | | | | | | | | | | | | | | | | |
| EM1260 | L3a(037) ROCARS Rm - Cable Splicing and Testing and Labeling | | | | | | | | | | | | | | | | | | |
| EM1280 | L3a(037) ROCARS Rm - AVCSS SYSCON and SURCON and Intercom Installation | | | | | | | | | | | | | | | | | | |
| EM1300 | L3a(037) ROCARS Rm - VTS WS Installation | | | | | | | | | | | | | | | | | | |
| EM1320 | L3a(037) ROCARS Rm - VID WS Installation | | | | | | | | | | | | | | | | | | |
| EM1340 | L3a(037) ROCARS Rm - SURCON and SYSCON and WS Tuning | | | | | | | | | | | | | | | | | | |
| Location 3a(Inbd Cargo Exam Bldg (037) Main Server Room) | | 07-Aug-17, Location 3a(Inbd Cargo Exam Bldg (037) Main Server Rm - Cable Laying and termination in Location 3 and Location 3a L3a(037) Main Server Rm - Cable Laying and termination L3a(037) Main Server Rm - Cable Splicing and Testing and Labeling L3a(037) Main Server Rm - AVCSS Server Installation L3a(037) Main Server Rm - VTS Server Installation L3a(037) Main Server Rm - Servers Tuning | | | | | | | | | | | | | | | | | |
| EM2120 | L3a(037) Main Server Rm - Cable Laying and termination in Location 3 and Location 3a | | | | | | | | | | | | | | | | | | |
| EM2140 | L3a(037) Main Server Rm - Cable Splicing and Testing and Labeling | | | | | | | | | | | | | | | | | | |
| EM2160 | L3a(037) Main Server Rm - AVCSS Server Installation | | | | | | | | | | | | | | | | | | |
| EM2180 | L3a(037) Main Server Rm - VTS Server Installation | | | | | | | | | | | | | | | | | | |
| EM2200 | L3a(037) Main Server Rm - Servers Tuning | | | | | | | | | | | | | | | | | | |
| Location 4(Outbd Cargo Exam Bldg (023) MDF Room) | | 04-Aug-17, Location 4a(Outbd Cargo Exam Bldg (023) ROCARS Rm - Cable Splicing and Testing and Labeling L4a(023) ROCARS Rm - Cable Splicing and Testing and Labeling L4a(023) ROCARS Rm - AVCSS SYSCON and SURCON and Intercom Installation L4a(023) ROCARS Rm - VTS WS Installation L4a(023) ROCARS Rm - SYSCON and SURCON and WS Tuning | | | | | | | | | | | | | | | | | |
| EM2240 | L4a(023) ROCARS Rm - Cable Splicing and Testing and Labeling | | | | | | | | | | | | | | | | | | |
| EM2260 | L4a(023) ROCARS Rm - AVCSS SYSCON and SURCON and Intercom Installation | | | | | | | | | | | | | | | | | | |
| EM2280 | L4a(023) ROCARS Rm - VTS WS Installation | | | | | | | | | | | | | | | | | | |
| EM2300 | L4a(023) ROCARS Rm - SYSCON and SURCON and WS Tuning | | | | | | | | | | | | | | | | | | |
| Location 5(Common Utility Enclosure & Staff Subway) | | 01-Sep-17, Location 5(Common Utility Enclosure & Staff Subway) - Cable Laying between Location 5 and Location 6 L5(CUE) - Cable Laying between Location 5 and Location 6 L5(CUE) - Cable Laying between Location 5 and Location 7 L5(CUE) - Cable Splicing and Testing and Labeling | | | | | | | | | | | | | | | | | |
| EM2341 | L5(CUE) - Cable Laying between Location 5 and Location 6 | | | | | | | | | | | | | | | | | | |
| EM2361 | L5(CUE) - Cable Laying between Location 5 and Location 7 | | | | | | | | | | | | | | | | | | |
| EM2380 | L5(CUE) - Cable Splicing and Testing and Labeling | | | | | | | | | | | | | | | | | | |
| Location 6(Common Utility Enclosure & Staff Subway) | | 26-Aug-17, Location 6(Common Utility Enclosure & Staff Subway) - Cable Laying between Location 5 and Location 6 L6(CUE) - Cable Laying between Location 5 and Location 6 L6(CUE) - Cable Splicing and Testing and Labeling | | | | | | | | | | | | | | | | | |
| EM2400 | L6(CUE) - Cable Laying between Location 5 and Location 6 | | | | | | | | | | | | | | | | | | |
| EM2420 | L6(CUE) - Cable Splicing and Testing and Labeling | | | | | | | | | | | | | | | | | | |
| Location 7(Common Utility Enclosure & Staff Subway) | | 01-Sep-17, Location 7(Common Utility Enclosure & Staff Subway) - Cable Laying between Location 5 and Location 6 L7(CUE) - Cable Laying between Location 5 and Location 6 L7(CUE) - Cable Splicing and Testing and Labeling | | | | | | | | | | | | | | | | | |
| EM2440 | L7(CUE) - Cable Laying between Location 5 and Location 6 | | | | | | | | | | | | | | | | | | |
| EM2460 | L7(CUE) - Cable Splicing and Testing and Labeling | | | | | | | | | | | | | | | | | | |
| Location 12(Inbd Private Car Kiosks,GV Kiosks (027,028,029)) | | 30-Aug-17, Location 12(Inbd Private Car Kiosks,GV Kiosks (027,028,029)) - 9 nos (Phase 1) 24-Aug-17, Inbd Private Car Kiosks(027) - 9 nos (Phase 1) L12(027)(9nos P1) - Cable Splicing and Testing and Labeling L12(027)(9nos P1) - AVCSS/MOM Kiosk Equipment Installation (9 nos) L12(027)(9nos P1) - XDB installation (18 nos) L12(027)(9nos P1) - ODB installation (5 nos) L12(027)(9nos P1) - ODB installation (2 nos) L12(027)(9nos P1) - ODB installation (2 nos) L12(027)(9nos P1) - Loop installation (45 nos) | | | | | | | | | | | | | | | | | |
| EM1500 | L12(027)(9nos P1) - Cable Splicing and Testing and Labeling | | | | | | | | | | | | | | | | | | |
| EM1520 | L12(027)(9nos P1) - AVCSS/MOM Kiosk Equipment Installation (9 nos) | | | | | | | | | | | | | | | | | | |
| EM1541 | L12(027)(9nos P1) - XDB installation (18 nos) | | | | | | | | | | | | | | | | | | |
| EM1542 | L12(027)(9nos P1) - ODB installation (5 nos) | | | | | | | | | | | | | | | | | | |
| EM1543 | L12(027)(9nos P1) - ODB installation (2 nos) | | | | | | | | | | | | | | | | | | |
| EM1544 | L12(027)(9nos P1) - ODB installation (2 nos) | | | | | | | | | | | | | | | | | | |
| EM1560 | L12(027)(9nos P1) - Loop installation (45 nos) | | | | | | | | | | | | | | | | | | |
| Inbd Goods Vehicle Kiosks(028) - 5 nos (Phase 1) | | 30-Aug-17, Inbd Goods Vehicle Kiosks(028) - 5 nos (Phase 1) L12(028)(5nos P1) - Cable Laying and termination L12(028)(5nos P1) - Cable Splicing and Testing and Labeling L12(028)(5nos P1) - AVCSS/MOM Kiosk Equipment Installation (5 nos) L12(028)(5nos P1) - XDB installation (10 nos) L12(028)(5nos P1) - ODB installation (3 nos) L12(028)(5nos P1) - ODB installation (2 nos) | | | | | | | | | | | | | | | | | |
| EM1620 | L12(028)(5nos P1) - Cable Laying and termination | | | | | | | | | | | | | | | | | | |
| EM1640 | L12(028)(5nos P1) - Cable Splicing and Testing and Labeling | | | | | | | | | | | | | | | | | | |
| EM1660 | L12(028)(5nos P1) - AVCSS/MOM Kiosk Equipment Installation (5 nos) | | | | | | | | | | | | | | | | | | |
| EM1681 | L12(028)(5nos P1) - XDB installation (10 nos) | | | | | | | | | | | | | | | | | | |
| EM1682 | L12(028)(5nos P1) - ODB installation (3 nos) | | | | | | | | | | | | | | | | | | |
| EM1683 | L12(028)(5nos P1) - ODB installation (2 nos) | | | | | | | | | | | | | | | | | | |

Programme No.: HZMB-DWP
Data Date: 14-Aug-15

- Actual Level of Effort
- Primary Baseline
- Actual Work
- Remaining Work
- Critical Remaining Work
- summary
- Baseline Milestone
- Milestone

Hong Kong-Zhuhai-Macao Bridge
Hong Kong Boundary Crossing
Facilities - Automatic Vehicle
Clearance Support System (AVCSS)

| Date | Revision | Checked | Approved |
|-----------|------------|---------|----------|
| 14-Nov-16 | Rev.: 0 | WC | LC |
| 10-Mar-17 | Rev.: 1.0a | WC | LC |
| 5-May-17 | Rev.: 1.0b | WC | LC |

| Activity ID | Activity Name | 2015 | | | 2016 | | | | 2017 | | | | 2018 | | | | 2019 | | |
|--|--|------|----|----|------|----|----|----|------|----|----|----|------|----|----|----|------|----|----|
| | | Q2 | Q3 | Q4 | Q1 | Q2 | Q3 | Q4 | Q1 | Q2 | Q3 | Q4 | Q1 | Q2 | Q3 | Q4 | Q1 | Q2 | Q3 |
| EM1700 | L12(028)(5nos P1) - AIOP Installation (5 nos) | | | | | | | | | | | | | | | | | | |
| EM1720 | L12(028)(5nos P1) - Loop installation (25 nos) | | | | | | | | | | | | | | | | | | |
| Outbd Goods Vehicle Kiosks(029) - 5 nos (Phase 1) | | | | | | | | | | | | | | | | | | | |
| EM1740 | L12(029)(5nos P1) - Cable Containment in Kiosks | | | | | | | | | | | | | | | | | | |
| EM1760 | L12(029)(5nos P1) - Cable Laying and termination | | | | | | | | | | | | | | | | | | |
| EM1780 | L12(029)(5nos P1) - Cable Splicing and Testing and Labeling | | | | | | | | | | | | | | | | | | |
| EM1800 | L12(029)(5nos P1) - AVCSS/MOM Kiosk Equipment Installation (5 nos) | | | | | | | | | | | | | | | | | | |
| EM1821 | L12(029)(5nos P1) - XDB installation (5 nos) | | | | | | | | | | | | | | | | | | |
| EM1822 | L12(029)(5nos P1) - ODB installation (4 nos) | | | | | | | | | | | | | | | | | | |
| EM1823 | L12(029)(5nos P1) - ODB installation (1 nos) | | | | | | | | | | | | | | | | | | |
| EM1840 | L12(029)(5nos P1) - AIOP Installation (5 nos) | | | | | | | | | | | | | | | | | | |
| Location 13(Outbd Private Car Kiosks (030)) - 9 nos (Phase 1) | | | | | | | | | | | | | | | | | | | |
| EM2520 | L13(030)(9nos P1) - Cable Containment in Kiosks | | | | | | | | | | | | | | | | | | |
| EM2540 | L13(030)(9nos P1) - Cable Laying and termination | | | | | | | | | | | | | | | | | | |
| EM2560 | L13(030)(9nos P1) - Cable Splicing and Testing and Labeling | | | | | | | | | | | | | | | | | | |
| EM2580 | L13(030)(9nos P1) - AVCSS/MOM Kiosk Equipment Installation (9 nos) | | | | | | | | | | | | | | | | | | |
| EM2601 | L13(030)(9nos P1) - XDB installation (9 nos) | | | | | | | | | | | | | | | | | | |
| EM2602 | L13(030)(9nos P1) - ODB installation (7 nos) | | | | | | | | | | | | | | | | | | |
| Location 14(Future-Outbd/Inbd Private Car Kiosks) - 6+6 nos | | | | | | | | | | | | | | | | | | | |
| EM1440 | L14 - Cable Laying and termination at ELV Room in CUE | | | | | | | | | | | | | | | | | | |
| Location 15(Inbd Traffic Control Kiosk (100)) | | | | | | | | | | | | | | | | | | | |
| Location 16(Outbd Traffic Control Kiosk (101)) | | | | | | | | | | | | | | | | | | | |
| EM2760 | L16(101) - Cable Laying and termination | | | | | | | | | | | | | | | | | | |
| EM2780 | L16(101) - Cable Splicing and Testing and Labeling | | | | | | | | | | | | | | | | | | |
| EM2800 | L16(101) - AVCSS SYSCON and SURCON Installation | | | | | | | | | | | | | | | | | | |
| EM2820 | L16(101) - VTS WS and 55" LCD Installation | | | | | | | | | | | | | | | | | | |
| Location 17(Inbd Private Car Exam Bldg(033) Operational Office) | | | | | | | | | | | | | | | | | | | |
| Location 18 (Outbd Private Car Exam Bldg(024) Operational Office) | | | | | | | | | | | | | | | | | | | |
| EM2940 | L18(024) - Cable Laying and termination | | | | | | | | | | | | | | | | | | |
| EM2960 | L18(024) - Cable Splicing and Testing and Labeling | | | | | | | | | | | | | | | | | | |
| EM2980 | L18(024) - AVCSS SURCON and 55" LCD Installation | | | | | | | | | | | | | | | | | | |
| EM3000 | L18(024) - SURCON Tuning | | | | | | | | | | | | | | | | | | |
| Location 19 (DOH Cargo Clearance Bldg(043)) | | | | | | | | | | | | | | | | | | | |
| EM1360 | L19(043) - Cable Laying and termination | | | | | | | | | | | | | | | | | | |
| EM1380 | L19(043) - Cable Splicing and Testing and Labeling | | | | | | | | | | | | | | | | | | |
| EM1400 | L19(043) - PA and Intercom Installation | | | | | | | | | | | | | | | | | | |
| EM1420 | L19(043) - PA and Intercom Tuning | | | | | | | | | | | | | | | | | | |
| Inbd Vehicle Clearance Plaza - 8 nos VID, 7 nos VTS, 4 nos TLS | | | | | | | | | | | | | | | | | | | |
| EM3020 | Inbound VID cabling from pillar box to VID field equipment | | | | | | | | | | | | | | | | | | |
| EM3040 | Inbound VTS cabling from pillar box to VTS field equipment | | | | | | | | | | | | | | | | | | |
| EM3060 | Inbound TLS cabling from pillar box to TLS field equipment | | | | | | | | | | | | | | | | | | |
| EM3080 | Inbound VID field equipment installation (8 VID) | | | | | | | | | | | | | | | | | | |
| EM3100 | Inbound VTS field equipment installation (4 RFID + 3 Cameras) | | | | | | | | | | | | | | | | | | |
| EM3120 | Inbound TLS field equipment installation (4 TLS) | | | | | | | | | | | | | | | | | | |
| EM3140 | Inbound VID and VTS and TLS field equipment tuning | | | | | | | | | | | | | | | | | | |

| | | | | | | | |
|---|--|--|--|-----------|------------|---------|----------|
| Programme No.: HZMB-DWP Data Date: 14-Aug-15 | | | Hong Kong-Zhuhai-Macao Bridge Hong Kong Boundary Crossing Facilities - Automatic Vehicle Clearance Support System (AVCSS) | Date | Revision | Checked | Approved |
| | | | | 14-Nov-16 | Rev.: 0 | WC | LC |
| | | | | 10-Mar-17 | Rev.: 1.0a | WC | LC |
| | | | | 5-May-17 | Rev.: 1.0b | WC | LC |

| Activity ID | Activity Name | 2015 | | | | | | | | | | | | | | | 2016 | | | | 2017 | | | | 2018 | | | | 2019 | | | | | | | | | | | | | | | | | | | | | | | | | | |
|---|--|------|--|--|----|--|--|----|--|--|----|--|--|----|--|--|------|--|--|----|------|--|----|--|------|----|--|--|--|--|--|--|--|--|--|--|--|--|--|--|--|--|--|--|--|--|--|--|--|--|--|--|--|--|--|
| | | Q2 | | | Q3 | | | Q4 | | | Q1 | | | Q2 | | | Q3 | | | Q4 | | | Q1 | | | Q2 | | | Q3 | | | | | | | | | | | | | | | | | | | | | | | | | | |
| | | | | | | | | | | | | | | | | | | | | | | | | | | | | | | | | | | | | | | | | | | | | | | | | | | | | | | | |
| Outbd Vehicle Clearance Plaza - 8 nos VID, 6 nos VTS, 4 nos TLS | | | | | | | | | | | | | | | | | | | | | | | | | | | | | 02-Aug-17, Outbd Vehicle Clearance Plaza - 8 nos V | | | | | | | | | | | | | | | | | | | | | | | | | | |
| EM3160 | Outbound VID cabling from pillar box to VID field equipment | | | | | | | | | | | | | | | | | | | | | | | | | | | | Outbound VID cabling from pillar box to VID field equipr | | | | | | | | | | | | | | | | | | | | | | | | | | |
| EM3180 | Outbound VTS cabling from pillar box to VTS field equipment | | | | | | | | | | | | | | | | | | | | | | | | | | | | Outbound VTS cabling from pillar box to VTS field equi | | | | | | | | | | | | | | | | | | | | | | | | | | |
| EM3200 | Outbound TLS cabling from pillar box to TLS field equipment | | | | | | | | | | | | | | | | | | | | | | | | | | | | Outbound TLS cabling from pillar box to TLS field equ | | | | | | | | | | | | | | | | | | | | | | | | | | |
| EM3220 | Outbound VID field equipment installation (8 VID) | | | | | | | | | | | | | | | | | | | | | | | | | | | | Outbound VID field equipment installation (8 VID) | | | | | | | | | | | | | | | | | | | | | | | | | | |
| EM3240 | Outbound VTS field equipment installation (3 RFID + 3 Cameras) | | | | | | | | | | | | | | | | | | | | | | | | | | | | Outbound VTS field equipment installation (3 RFID + | | | | | | | | | | | | | | | | | | | | | | | | | | |
| EM3260 | Outbound TLS field equipment installation (4 TLS) | | | | | | | | | | | | | | | | | | | | | | | | | | | | Outbound TLS field equipment installation (4 TLS) | | | | | | | | | | | | | | | | | | | | | | | | | | |
| EM3280 | Outbound VID and VTS and TLS field equipment tuning | | | | | | | | | | | | | | | | | | | | | | | | | | | | Outbound VID and VTS and TLS field equipment tur | | | | | | | | | | | | | | | | | | | | | | | | | | |
| Underground Ducting (UUD1.1) between CUE and Inbd Cargo Exam Bldg (037) | | | | | | | | | | | | | | | | | | | | | | | | | | | | | 13-Jun-17, Underground Ducting (UUD1.1) between C | | | | | | | | | | | | | | | | | | | | | | | | | | |
| UD1000 | (UUD1.1 [CUE-037]) - Cable laying and termination | | | | | | | | | | | | | | | | | | | | | | | | | | | | (UUD1.1 [CUE-037]) - Cable laying and termination; | | | | | | | | | | | | | | | | | | | | | | | | | | |
| (UUD1.2) between Inbd Cargo Exam Bldg South (037[S]) and DOH Cargo Clearance Bldg (023) | | | | | | | | | | | | | | | | | | | | | | | | | | | | | 27-Jun-17, (UUD1.2) between Inbd Cargo Exam Bldg | | | | | | | | | | | | | | | | | | | | | | | | | | |
| UD1060 | (UUD1.2 [037[S]-043]) - Cable laying and termination | | | | | | | | | | | | | | | | | | | | | | | | | | | | (UUD1.2 [037[S]-043]) - Cable laying and termination | | | | | | | | | | | | | | | | | | | | | | | | | | |
| Underground Ducting (UUD6) between CUE and Shuttle Bus Kiosk (006) and Inbd Private Car Exam Bldg (033) | | | | | | | | | | | | | | | | | | | | | | | | | | | | | | | | | | | | | | | | | | | | | | | | | | | | | | | |
| (UUD9.1) btw IB Cargo Exam Bldg South(037[S]) & IB PC Exam Bldg(033) & IB Traffic Control Bldg (023) | | | | | | | | | | | | | | | | | | | | | | | | | | | | | 12-Jul-17, (UUD9.1) btw IB Cargo Exam Bldg South(| | | | | | | | | | | | | | | | | | | | | | | | | | |
| UD1040 | (UUD9.1 [037[S]-033-100]) - Cable laying and termination | | | | | | | | | | | | | | | | | | | | | | | | | | | | (UUD9.1 [037[S]-033-100]) - Cable laying and termina | | | | | | | | | | | | | | | | | | | | | | | | | | |
| (UUD2) between Inbd Cargo Exam Bldg North (037[N]) to Inbd VCP | | | | | | | | | | | | | | | | | | | | | | | | | | | | | 26-Jul-17, (UUD2) between Inbd Cargo Exam Bldg I | | | | | | | | | | | | | | | | | | | | | | | | | | |
| UD1010 | (UUD2 [037[N]-IB VCP]) - Cable laying and termination | | | | | | | | | | | | | | | | | | | | | | | | | | | | (UUD2 [037[N]-IB VCP]) - Cable laying and terminat | | | | | | | | | | | | | | | | | | | | | | | | | | |
| (UUD9.3) between Inbd Private Car Exam Bldg (033) and Inbd Vehicle Clearance Plaza | | | | | | | | | | | | | | | | | | | | | | | | | | | | | 09-Aug-17, (UUD9.3) between Inbd Private Car Ex | | | | | | | | | | | | | | | | | | | | | | | | | | |
| UD1070 | (UUD9.3 [033-IB VCP[W]]) - Cable laying and termination | | | | | | | | | | | | | | | | | | | | | | | | | | | | (UUD9.3 [033-IB VCP[W]]) - Cable laying and termi | | | | | | | | | | | | | | | | | | | | | | | | | | |
| (UUD9.2) between Inbd Private Car Exam Bldg (033) and Inbd Vehicle Clearance Plaza | | | | | | | | | | | | | | | | | | | | | | | | | | | | | 23-Aug-17, (UUD9.2) between Inbd Private Car E | | | | | | | | | | | | | | | | | | | | | | | | | | |
| UD1020 | (UUD9.2 [033-IB VCP[E]]) - Cable laying and termination | | | | | | | | | | | | | | | | | | | | | | | | | | | | (UUD9.2 [033-IB VCP[E]]) - Cable laying and termi | | | | | | | | | | | | | | | | | | | | | | | | | | |
| Underground Ducting (UUD7) between PCB(001) and Inbd Coach Kiosks(010) | | | | | | | | | | | | | | | | | | | | | | | | | | | | | | | | | | | | | | | | | | | | | | | | | | | | | | | |
| Underground Ducting (UUD3.1) between CUE and Outbd Cargo Exam Bldg (023) | | | | | | | | | | | | | | | | | | | | | | | | | | | | | 14-Jun-17, Underground Ducting (UUD3.1) between C | | | | | | | | | | | | | | | | | | | | | | | | | | |
| UD1030 | (UUD3.1 [CUE-023]) - Cable laying and termination | | | | | | | | | | | | | | | | | | | | | | | | | | | | (UUD3.1 [CUE-023]) - Cable laying and termination; | | | | | | | | | | | | | | | | | | | | | | | | | | |
| (UUD3.2) btw OB Car Exam Bldg(023) & OB PC Exam Bldg(024) & OB Traffic Control Bldg (023) | | | | | | | | | | | | | | | | | | | | | | | | | | | | | 28-Jun-17, (UUD3.2) btw OB Car Exam Bldg(023) & C | | | | | | | | | | | | | | | | | | | | | | | | | | |
| UD1050 | (UUD3.2 [023-024-101]) - Cable laying and termination | | | | | | | | | | | | | | | | | | | | | | | | | | | | (UUD3.2 [023-024-101]) - Cable laying and termination | | | | | | | | | | | | | | | | | | | | | | | | | | |
| Underground Ducting (UUD8) between CUE and Outbd PCA (032) | | | | | | | | | | | | | | | | | | | | | | | | | | | | | 13-Jun-17, Underground Ducting (UUD8) between CUE | | | | | | | | | | | | | | | | | | | | | | | | | | |
| UD1100 | (UUD8 [CUE-032]) - Cable laying and termination | | | | | | | | | | | | | | | | | | | | | | | | | | | | (UUD8 [CUE-032]) - Cable laying and termination | | | | | | | | | | | | | | | | | | | | | | | | | | |
| (UUD4.1) between Outbd PC Exam Bldg (024) and Outbd Vehicle Clearance Plaza | | | | | | | | | | | | | | | | | | | | | | | | | | | | | 13-Jul-17, (UUD4.1) between Outbd PC Exam Bldg(| | | | | | | | | | | | | | | | | | | | | | | | | | |
| UD1080 | (UUD4.1 [024-OB VCP]) - Cable laying and termination | | | | | | | | | | | | | | | | | | | | | | | | | | | | (UUD4.1 [024-OB VCP]) - Cable laying and terminat | | | | | | | | | | | | | | | | | | | | | | | | | | |
| (UUD5) between Outbd Car Exam Bldg (023[S]) and Outbd Vehicle Clearance Plaza | | | | | | | | | | | | | | | | | | | | | | | | | | | | | 27-Jun-17, (UUD5) between Outbd Car Exam Bldg (02 | | | | | | | | | | | | | | | | | | | | | | | | | | |
| UD1090 | (UUD5 [023[S]-OB VCP]) - Cable laying and termination | | | | | | | | | | | | | | | | | | | | | | | | | | | | (UUD5 [023[S]-OB VCP]) - Cable laying and terminat | | | | | | | | | | | | | | | | | | | | | | | | | | |
| Initial On-Site Test and Commissioning / Pre-SAT (Phase 1 / Section I) | | | | | | | | | | | | | | | | | | | | | | | | | | | | | | | | | | | | | | | | | | | | | | | | | | | | | | | |
| Site Acceptance Test (Phase 1 / Section I) | | | | | | | | | | | | | | | | | | | | | | | | | | | | | | | | | | | | | | | | | | | | | | | | | | | | | | | |
| Security Risk Assessment and Audit | | | | | | | | | | | | | | | | | | | | | | | | | | | | | | | | | | | | | | | | | | | | | | | | | | | | | | | |
| Operability Period Test (Phase 1 / Section I) | | | | | | | | | | | | | | | | | | | | | | | | | | | | | | | | | | | | | | | | | | | | | | | | | | | | | | | |
| Completion (Phase 1 /Section I) | | | | | | | | | | | | | | | | | | | | | | | | | | | | | | | | | | | | | | | | | | | | | | | | | | | | | | | |
| Training and Document (Phase 1 /Section I) | | | | | | | | | | | | | | | | | | | | | | | | | | | | | | | | | | | | | | | | | | | | | | | | | | | | | | | |
| Operation (Phase 1 /Section I) | | | | | | | | | | | | | | | | | | | | | | | | | | | | | | | | | | | | | | | | | | | | | | | | | | | | | | | |
| Engineering Support for Phase 1 / Section I | | | | | | | | | | | | | | | | | | | | | | | | | | | | | | | | | | | | | | | | | | | | | | | | | | | | | | | |
| Procurement - Phase 2 / Section II | | | | | | | | | | | | | | | | | | | | | | | | | | | | | | | | | | | | | | | | | | | | | | | | | | | | | | | |
| Delivery and Bench Acceptance Test for Phase 2/Section II | | | | | | | | | | | | | | | | | | | | | | | | | | | | | | | | | | | | | | | | | | | | | | | | | | | | | | | |
| Installation - Phase 2 / Section II | | | | | | | | | | | | | | | | | | | | | | | | | | | | | 30-Aug-17, Installation -Phase 2/ Section II | | | | | | | | | | | | | | | | | | | | | | | | | | |

| | | | | | | |
|---|--|--|-----------|------------|---------|----------|
| Programme No.: HZMB-DWP Data Date: 14-Aug-15 | | Hong Kong-Zhuhai-Macao Bridge Hong Kong Boundary Crossing Facilities - Automatic Vehicle Clearance Support System (AVCSS) | Date | Revision | Checked | Approved |
| | | | 14-Nov-16 | Rev.: 0 | WC | LC |
| | | | 10-Mar-17 | Rev.: 1.0a | WC | LC |
| | | | 5-May-17 | Rev.: 1.0b | WC | LC |

| Activity ID | Activity Name | 2015 | | | 2016 | | | | 2017 | | | | 2018 | | | | 2019 | | |
|---|--|--|----|----|------|----|----|----|------|----|----|----|------|----|----|----|------|----|----|
| | | Q2 | Q3 | Q4 | Q1 | Q2 | Q3 | Q4 | Q1 | Q2 | Q3 | Q4 | Q1 | Q2 | Q3 | Q4 | Q1 | Q2 | Q3 |
| Location 8(Inbd Private Car Annex (025)) (Phase 2) | | ▼ 30-Aug-17; Location 8(Inbd Private Car Annex (025)) (Phase 2) | | | | | | | | | | | | | | | | | |
| EM3370 | L8(025) - Cable Containment in Kiosks | ■ L8(025) - Cable Containment in Kiosks | | | | | | | | | | | | | | | | | |
| EM3380 | L8(025) - Cable Laying and termination | ■ L8(025) - Cable Laying and termination | | | | | | | | | | | | | | | | | |
| EM3400 | L8(025) - Cable Splicing and Testing and Labeling | ■ L8(025) - Cable Splicing and Testing and Labeling | | | | | | | | | | | | | | | | | |
| Location 9(Outbd Private Car Annex (032)) (Phase 2) | | ▼ 30-Aug-17; Location 9(Outbd Private Car Annex (032)) (Phase 2) | | | | | | | | | | | | | | | | | |
| EM3500 | L9(032) - Cable Containment in Kiosks | ■ L9(032) - Cable Containment in Kiosks | | | | | | | | | | | | | | | | | |
| EM3520 | L9(032) - Cable Laying and termination | ■ L9(032) - Cable Laying and termination | | | | | | | | | | | | | | | | | |
| Initial On-Site Test and Commissioning / Pre-SAT (Phase 2 / Section II) | | | | | | | | | | | | | | | | | | | |
| Site Acceptance Test (Phase 2 / Section II) | | | | | | | | | | | | | | | | | | | |
| Operability Period Test (Phase 2 / Section II) | | | | | | | | | | | | | | | | | | | |
| Completion (Phase 2 / Section II) | | | | | | | | | | | | | | | | | | | |
| Engineering Support for Phase 2 / Section II | | | | | | | | | | | | | | | | | | | |
| Procurement for Phase2 / Section III | | | | | | | | | | | | | | | | | | | |
| Delivery and Bench Acceptance Test for Phase2 / Section III | | | | | | | | | | | | | | | | | | | |
| Installation - Phase 2 / Section III | | ▼ 09-Oct-17; Installation - Phase 2 / Section III | | | | | | | | | | | | | | | | | |
| Location 10,11,12,13 (Vehicle Clearance Kiosks) | | ▼ 09-Oct-17; Location 10,11,12,13 (Vehicle Clearance Kiosks) | | | | | | | | | | | | | | | | | |
| Location 12 Inbd Private Car Kiosks (027) - 12 nos (Phase 2) | | ▼ 09-Oct-17; Location 12 Inbd Private Car Kiosks | | | | | | | | | | | | | | | | | |
| EM4440 | L12(027)(12nos P2) - Cable Laying and termination | ■ L12(027)(12nos P2) - Cable Laying and termination | | | | | | | | | | | | | | | | | |
| EM4460 | L12(027)(12nos P2) - Cable Splicing and Testing and Labeling | ■ L12(027)(12nos P2) - Cable Splicing and Testing and Labeling | | | | | | | | | | | | | | | | | |
| EM4480 | L12(027)(12nos P2) - AVCSS/DOH/MOM Kiosk Equipment Installation (12 nos) | ■ L12(027)(12nos P2) - AVCSS/DOH/MOM Kiosk Equipment Installation (12 nos) | | | | | | | | | | | | | | | | | |
| Location 13 Outbd Private Car Kiosks (030) - 12 nos (Phase 2) | | ▼ 01-Sep-17; Location 13 Outbd Private Car Kiosks | | | | | | | | | | | | | | | | | |
| EM4560 | L13(030)(12nos P2) - Cable Containment in Kiosks | ■ L13(030)(12nos P2) - Cable Containment in Kiosks | | | | | | | | | | | | | | | | | |
| Location 12 Outbd Goods Vehicle Kiosks (029) - 3 nos (Phase 2) | | ▼ 31-Aug-17; Location 12 Outbd Goods Vehicle Kiosks | | | | | | | | | | | | | | | | | |
| EM4880 | L12(029)(3nos P2) - Cable Laying and termination | ■ L12(029)(3nos P2) - Cable Laying and termination | | | | | | | | | | | | | | | | | |
| EM4900 | L12(029)(3nos P2) - Cable Splicing and Testing and Labeling | ■ L12(029)(3nos P2) - Cable Splicing and Testing and Labeling | | | | | | | | | | | | | | | | | |
| EM4920 | L12(029)(3nos P2) - AVCSS/DOH/MOM Kiosk Equipment Installation (3 nos) | ■ L12(029)(3nos P2) - AVCSS/DOH/MOM Kiosk Equipment Installation (3 nos) | | | | | | | | | | | | | | | | | |
| EM4940 | L12(029)(3nos P2) - ODB & XDB Installation (3 nos) | ■ L12(029)(3nos P2) - ODB & XDB Installation (3 nos) | | | | | | | | | | | | | | | | | |
| EM4960 | L12(029)(3nos P2) - AIOP Installation (3 nos) | ■ L12(029)(3nos P2) - AIOP Installation (3 nos) | | | | | | | | | | | | | | | | | |
| EM4980 | L12(029)(3nos P2) - Loop Installation (15 nos) | ■ L12(029)(3nos P2) - Loop Installation (15 nos) | | | | | | | | | | | | | | | | | |
| Location 11 Outbd Coach Kiosks (009) - 4 nos (Phase 2) | | | | | | | | | | | | | | | | | | | |
| Location 12 Inbd Goods Vehicle Kiosks (028) - 3 nos (Phase 2) | | ▼ 24-Aug-17; Location 12 Inbd Goods Vehicle Kiosks | | | | | | | | | | | | | | | | | |
| EM4720 | L12(028)(3nos P2) - Cable Laying and termination | ■ L12(028)(3nos P2) - Cable Laying and termination | | | | | | | | | | | | | | | | | |
| EM4740 | L12(028)(3nos P2) - Cable Splicing and Testing and Labeling | ■ L12(028)(3nos P2) - Cable Splicing and Testing and Labeling | | | | | | | | | | | | | | | | | |
| EM4760 | L12(028)(3nos P2) - AVCSS/DOH/MOM Kiosk Equipment Installation (3 nos) | ■ L12(028)(3nos P2) - AVCSS/DOH/MOM Kiosk Equipment Installation (3 nos) | | | | | | | | | | | | | | | | | |
| EM4780 | L12(028)(3nos P2) - ODB & XDB Installation (3 nos) | ■ L12(028)(3nos P2) - ODB & XDB Installation (3 nos) | | | | | | | | | | | | | | | | | |
| EM4800 | L12(028)(3nos P2) - AIOP Installation (3 nos) | ■ L12(028)(3nos P2) - AIOP Installation (3 nos) | | | | | | | | | | | | | | | | | |
| EM4820 | L12(028)(3nos P2) - Loop Installation (15 nos) | ■ L12(028)(3nos P2) - Loop Installation (15 nos) | | | | | | | | | | | | | | | | | |
| EM4840 | L12(028)(3nos P2) - Kiosk Equipment Configuration (3 nos) | ■ L12(028)(3nos P2) - Kiosk Equipment Configuration (3 nos) | | | | | | | | | | | | | | | | | |
| EM5120 | L12(028)(3nos P2) - Inbd Goods Vehicle Kiosks Installation Complete | ◆ L12(028)(3nos P2) - Inbd Goods Vehicle Kiosks Installation Complete | | | | | | | | | | | | | | | | | |
| Location 10 Shuttle Bus Kiosks (006) - 4 nos (Phase 2) | | ▼ 30-Aug-17; Location 10 Shuttle Bus Kiosks (006) - | | | | | | | | | | | | | | | | | |
| EM4000 | L10(006)(4nos P2) - Cable Containment in Kiosks | ■ L10(006)(4nos P2) - Cable Containment in Kiosks | | | | | | | | | | | | | | | | | |
| Location 11 Inbd Coach Kiosks (010) - 2 nos (Phase 2)-1 | | | | | | | | | | | | | | | | | | | |
| Location 11 Inbd Coach Kiosks (010) - 2 nos (Phase 2)-2 | | | | | | | | | | | | | | | | | | | |
| Initial On-Site Test and Commissioning / Pre-SAT (Phase 2 / Section III) | | | | | | | | | | | | | | | | | | | |

Programme No.: HZMB-DWP
Data Date: 14-Aug-15




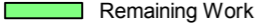
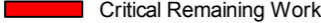


- Actual Level of Effort
- Primary Baseline
- Actual Work
- Remaining Work
- Critical Remaining Work
- ◆ Baseline Milestone
- ◆ Milestone

Hong Kong-Zhuhai-Macao Bridge
Hong Kong Boundary Crossing
Facilities - Automatic Vehicle
Clearance Support System (AVCSS)

| Date | Revision | Checked | Approved |
|-----------|------------|---------|----------|
| 14-Nov-16 | Rev.: 0 | WC | LC |
| 10-Mar-17 | Rev.: 1.0a | WC | LC |
| 5-May-17 | Rev.: 1.0b | WC | LC |

| Activity ID | Activity Name | 2015 | | | 2016 | | | | 2017 | | | | 2018 | | | | 2019 | | |
|-------------|---|------|----|----|------|----|----|----|------|----|----|----|------|----|----|----|------|----|----|
| | | Q2 | Q3 | Q4 | Q1 | Q2 | Q3 | Q4 | Q1 | Q2 | Q3 | Q4 | Q1 | Q2 | Q3 | Q4 | Q1 | Q2 | Q3 |
| | Site Acceptance Test (Phase 2 / Section III) | | | | | | | | | | | | | | | | | | |
| | Operability Period Test (Phase 2 / Section III) | | | | | | | | | | | | | | | | | | |
| | Completion (Phase 2 / Section III) | | | | | | | | | | | | | | | | | | |
| | Operation (Phase 2 / Section III) | | | | | | | | | | | | | | | | | | |
| | Defect Liability Period (DLP) | | | | | | | | | | | | | | | | | | |
| | Document Submission (Phase 2 / Section III) | | | | | | | | | | | | | | | | | | |

Programme No.: HZMB-DWP
Data Date: 14-Aug-15

-  Actual Level of Effort
-  Primary Baseline
-  Actual Work
-  Remaining Work
-  Critical Remaining Work
-  Baseline Milestone
-  Milestone

Hong Kong-Zhuhai-Macao Bridge
Hong Kong Boundary Crossing
Facilities - Automatic Vehicle
Clearance Support System (AVCSS)

| Date | Revision | Checked | Approved |
|-----------|------------|---------|----------|
| 14-Nov-16 | Rev.: 0 | WC | LC |
| 10-Mar-17 | Rev.: 1.0a | WC | LC |
| 5-May-17 | Rev.: 1.0b | WC | LC |