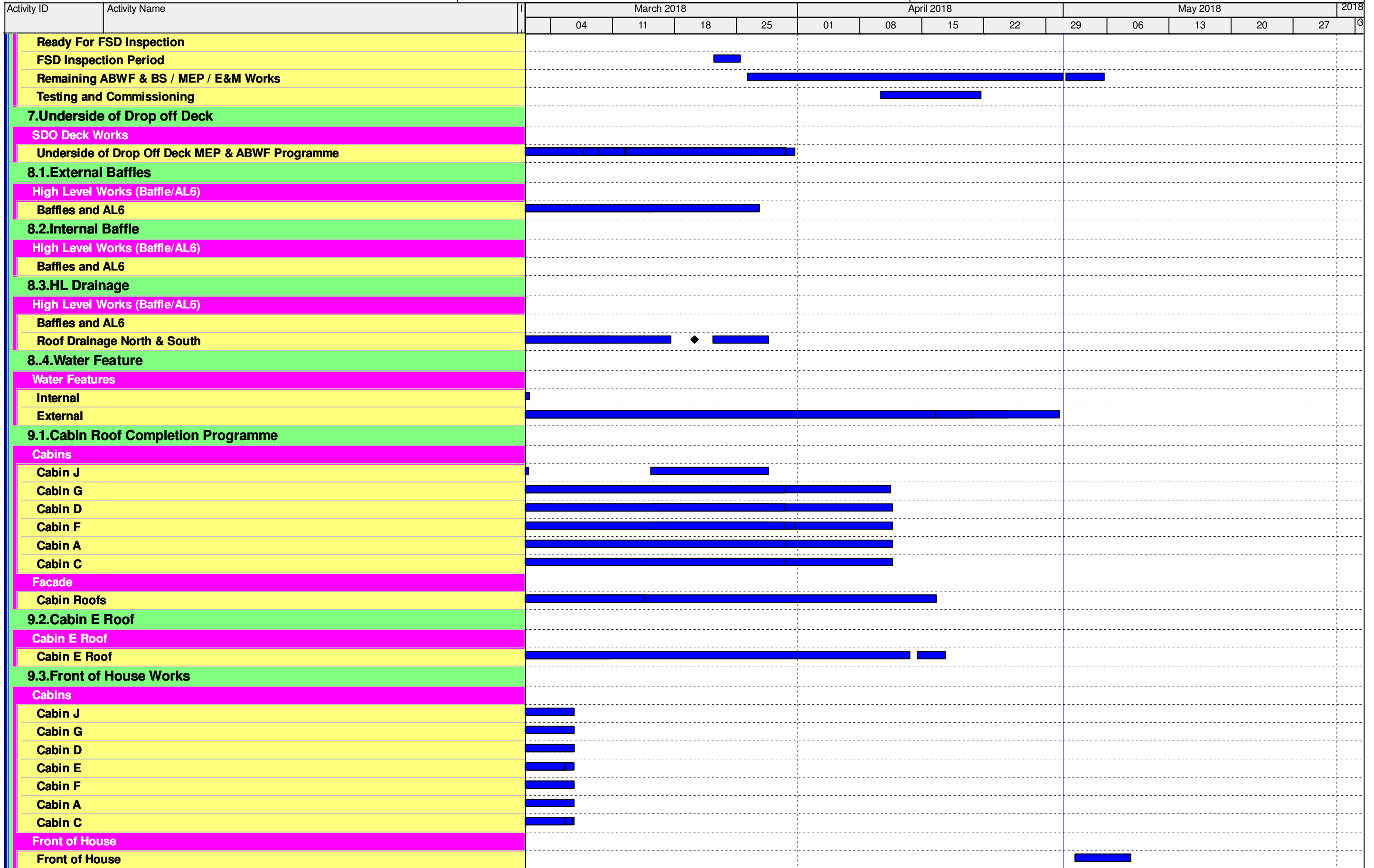


Activity ID	Activity Name	March 2018				April 2018				May 2018				2018	
		04	11	18	25	01	08	15	22	29	06	13	20	27	03
<b>Target Programme to Completion Update DD 1st May</b>															
<b>0.Fire Service Inspections</b>															
<b>Fire Service Inspections</b>															
<b>Fire Service Inspections</b>															
FSD1000	Complete FS defects from 1st Inspection														
FSD1010	FS taskforce inspections														
FSD1020	Additional works - AVAS systems														
FSD1030	Additional works - BSMT AHU Room Detectors														
FSD1035	Additional works - Probe detetors (AHU Plantroom)														
FSD1040	Final FS rehearsal tests/make ready for FS re inspection														
FSD1050	Request FS re-inspecton (excluding EVA + SFH)														
FSD1055	FS Review Period														
FSD1060	FS reinspection(s) (excluding EVA+SFH)														
FSD1071	FS reinspection for EVA+SFH														
FSD1072	EVA & SFH completion including FS Inspection														
FSD1072a	FS Review														
FSD1080	FS Issue fire certification														
FSD1090	TPIDC/AP/RSE Inspection														
FSD1100	OP Obtained														
FSD1110	Complete o/s items during Maintenance Period														
<b>1.External Works</b>															
<b>External Staircases</b>															
<b>External Works</b>															
<b>PCB - East</b>															
<b>PCB - West</b>															
<b>PCB - North (Under Row 5)</b>															
<b>PCB - Site entrance area and northern end (North West)</b>															
<b>Guard Booths</b>															
<b>2.External Toilets</b>															
<b>Public Toilets</b>															
<b>RC Structures</b>															
<b>ABWF Works</b>															
<b>MEP</b>															
<b>Roof</b>															
<b>3.Covered Walkway</b>															
<b>Covered Walkway</b>															
<b>South</b>															
<b>North</b>															
<b>4.Vertical Circulation</b>															
<b>Vertical Circulation</b>															
<b>Eastern Vertical Circulation</b>															
<b>Western Vertical Circulation</b>															
<b>5.Smoke Vent and Delivery Hatch</b>															
<b>Smoke Vent and Delivery Hatch</b>															
<b>6.Refuse Collection Point</b>															
<b>Refuse Collection Building</b>															

█ Remaining Level of Effort   
 █ Remaining Work   
 ◆ Milestone  
█ Actual Work   
 █ Critical Remaining Work



■ Remaining Level of Effort   
 ■ Remaining Work   
 ◆ Milestone   
 ■ Actual Work   
 ■ Critical Remaining Work

Activity ID	Activity Name	March 2018				April 2018				May 2018				2018	
		04	11	18	25	01	08	15	22	29	06	13	20	27	31
<b>Kiosks &amp; Booths</b>		[Gantt bars for Kiosks & Booths]													
<b>Red &amp; Green Channels</b>		[Gantt bars for Red & Green Channels]													
A26132	Red & Green Channel - Building Steel / Glazing	[Gantt bar]													
A26133	Red & Green Channel - Critical Room - ABWF	[Gantt bar]													
A26134	Red & Green Channel - Other Room - MEP	[Gantt bar]													
A26135	Red & Green Channel - Other Room - ABWF	[Gantt bar]													
A26136	Red & Green Channel - Critical Room - MEP	[Gantt bar]													
A26137	Red & Green Channel - Building Steel / Glazing	[Gantt bar]													
A26137a	Red & Green Channel - Hanging TV frames	[Gantt bar]													
A26138	Red & Green Channel - Critical Room - ABWF	[Gantt bar]													
A26139	Red & Green Channel - Critical Room - MEP	[Gantt bar]													
A26140	Red & Green Channel - Other Room - MEP	[Gantt bar]													
A26141	Red & Green Channel - Other Room - ABWF	[Gantt bar]													
<b>10. Balustrade</b>		[Gantt bars for Balustrade]													
<b>Balustrade</b>		[Gantt bars for Balustrade]													
<b>Internal</b>		[Gantt bars for Internal]													
<b>Footbridges</b>		[Gantt bars for Footbridges]													
<b>11. Roof Works</b>		[Gantt bars for Roof Works]													
<b>High Level Works (Baffle/AL6)</b>		[Gantt bars for High Level Works]													
<b>Roof Cladding &amp; Glazing</b>		[Gantt bars for Roof Cladding & Glazing]													
<b>Southern Drop Off Deck</b>		[Gantt bars for Southern Drop Off Deck]													
<b>SDO Deck Works</b>		[Gantt bars for SDO Deck Works]													
<b>EVA and Stage 1</b>		[Gantt bar]													
<b>Stage 2 (DOD North West)</b>		[Gantt bar]													
<b>Stage 3 (DOD South West)</b>		[Gantt bar]													
<b>Stage 4 (DOD East)</b>		[Gantt bar]													
<b>Movement Joint</b>		[Gantt bar]													
<b>Facade Programme</b>		[Gantt bars for Facade Programme]													
<b>Facade</b>		[Gantt bars for Facade]													
<b>Genset Building</b>		[Gantt bar]													
<b>Sea Water Pump House</b>		[Gantt bar]													
<b>Testing and Commissioning</b>		[Gantt bars for Testing and Commissioning]													
<b>Electrical Systems</b>		[Gantt bars for Electrical Systems]													
<b>CLP Tx Power &amp; LV Sub-mains Power-On</b>		[Gantt bars for CLP Tx Power & LV Sub-mains Power-On]													
EL1000	C3 handover for Remaining External Cable Duct Routes	[Gantt bar]													
EL1010	Complete Balance of Submains Cabling to External Areas incl C2 & C3 areas	[Gantt bar]													
EL1020	Progressively Energise Outgoing Circuits from LV switchboards - External Areas incl C2&C3	[Gantt bar]													
EL1030	LV Switchboards - Final Interfacing T&C with SCADA system	[Gantt bar]													
<b>Electrical Sub-mains Installation &amp; Final Distribution</b>		[Gantt bars for Electrical Sub-mains Installation & Final Distribution]													
EL1040	Complete Installation CBS Lighting Control for Emergency FS Lighting (26 no. sets):	[Gantt bar]													
EL1050	Final T&C: CBS Lighting Control fo FS Related Lighting Installations	[Gantt bar]													
EL1060	SCADA Interfacing with CBS and Final T&C	[Gantt bar]													
<b>Lighting and Small Power</b>		[Gantt bars for Lighting and Small Power]													
EL1070	Non-FS: Lighting & Small Power Final Circuit Testing / Progressive Switch Lights On	[Gantt bar]													
EL1080	Non-FS : Lighting & Small Power - Final Lighting Control T&C and Lux Level Checks	[Gantt bar]													
EL1090	Non-FS: Lighting & Small Power Final Circuit Testing / Progressive Switch Lights On	[Gantt bar]													
EL1100	Non-FS : Lighting & Small Power - Final Lighting Control T&C and Lux Level Checks	[Gantt bar]													

█ Remaining Level of Effort   
 █ Remaining Work   
 ◆ Milestone   
 █ Actual Work   
 █ Critical Remaining Work

Activity ID	Activity Name	March 2018				April 2018				May 2018				2018	
		04	11	18	25	01	08	15	22	29	06	13	20	27	31
EL1110	Non-FS: Lighting & Small Power Final Circuit Testing / Progressive Switch Lights On	[Actual Work]													
EL1120	Non-FS : Lighting & Small Power - Final Lighting Control T&C and Lux Level Checks														
EL1130	Non-FS: Lighting & Small Power Final Circuit Testing / Progressive Switch Lights On	[Actual Work]													
EL1140	Non-FS : Lighting & Small Power - Final Lighting Control T&C and Lux Level Checks														
<b>UPS Systems - Final T&amp;C:</b>															
EL1150	Full Load Test and Functional T&C														
EL1160	Interfacing with SCADA														
<b>Emergency Generator &amp; Associated Diesel Fuel Supply systems</b>															
EL1170	Fire Service Generators ( Zone C & G) Final T&C and Interfacing with SCADA														
EL1180	Fire Service Generators ( Zone A, D & J) Final T&C and Interfacing with SCADA														
EL1190	Emergency Generators (3no at EGB) Final T&C and Interfacing with SCADA														
<b>Other "Misc" Electrical Systems</b>															
EL1200	Earthing System - Final T&C														
EL1210	Lightning Protection System - Final T&C														
EL1220	SCADA System Interfacing with LV Sw Board and PQM Energy Mgt system														
<b>MVAC Systems</b>															
<b>Chiller Plant &amp; Associated Chilled &amp; Heating Water Distribution</b>															
MV1000	Stage 1 T&C for Chilled Water Circuit to enable Conditioned Wild Air														
MV1010	Progressive Energise Chiller Plant MCC's														
MV1020	Chilled Water - Primary & Secondary Water Circuit Flushing & Chemical Cleaning														
MV1020a	Chilled Water - Primary & Secondary Water Circuit Flushing & Chemical Cleaning - remaining														
MV1030	Chiller Primary Water Circuit By-pass Loops Re-instatement following flushing														
MV1040	Chiller Secondary Water Circuit By-pass Loops at AHU's and Hx Re-instatement														
MV1050	Chilled Water Pumps - Functional and Performance Tests														
MV1050a	Chilled Water Pumps - Functional and Performance Tests - Remaining														
MV1060	Chilled Water System - Ancilliary Equipment T&C														
MV1060a	Chilled Water System - Ancilliary Equipment T&C - Remaining														
MV1070	Chiller 1 & 2 Initial start-up checks (with Chiller supplier)														
MV1080	Chiller 3 to 8 Initial start-up checks (with Chiller supplier)														
MV1090	Light Chiller 1 to 3 Initial start-up checks (with Chiller supplier)														
MV1100	Condensor Seawater Supply Available														
MV1110	Target Chillers 1 & 2 Chillers Available and Chilled Water ON ( In Manual Mode)														
MV1120	Target ALL Chillers Available (In Manual Mode)														
MV1130	Chilled Water - Secondary Water Circuit Flushing & Chemical Cleaning - CUE														
MV1140	Chiller Secondary Water Circuit Remove By-pass Loops - CUE														
MV1620	Chilled Water Riser Branches local flushing														
MV1630	CHW Riser chemical treatment and cleaning														
MV1640	Complete balance CW,HW pwk - Flushing , Chem Clean and Final Balance														
<b>Chilled Water and Sea Water System SCADA T&amp;C</b>															
MV1150	Progressive Power On to SCADA PLC Panels														
MV1160	SWPH & Chiller Plant - End to End SCADA Wiring - Point Testing from PLC to Field Equipm														
MV1170	SWPH & Ciller Plant - SCADA Functional Testing														
MV1180	Chiller Plant & SWP - SCADA Chiller Start-up/Shut Down Programme Checking														
MV1190	Chiller & SWP Plant - SCADA Integrated Equipment Tests														
MV1200	Chiller & SWP Plant - SCADA Operation of System in Full Auto Mode														
MV1210	Chiller & SWP Plant - SCADA "Fine Tune" System Settings / Operation														
<b>Heating Water Distribution - T&amp;C</b>															
MV1220	Heating Water Pumps - T&C / Pump Alignment														
MV1230	Primary & Secondary Heating Water Pipe Flushing and Chemical Cleaning														
MV1240	Stage 1 Water Balancing - Main Pipework Basement level and up to G/F Riser														

█ Remaining Level of Effort   
 █ Remaining Work   
 ◆ Milestone  
█ Actual Work   
█ Critical Remaining Work

Three Month Rolling Programme HKMZB HKBCF - Passenger Clearance Building		1.03 Aecom Output										09-May-18 09:07			
Activity ID	Activity Name	March 2018				April 2018				May 2018				2018	
		04	11	18	25	01	08	15	22	29	06	13	20	27	31
MV1250	Complete balance HTG Pwk - Flushing, Chem. Clean and Final Balance	[Actual Work]										[Remaining Work]			
<b>Heat Pumps - Initial start-up SAT checks &amp; SCADA T&amp;C</b>															
MV1260	Heat Pump 1 to 4 Initial start-up checks (with Chiller supplier)	[Actual Work]													
MV1270	Progressive Power On to SCADA PLC Panels	[Actual Work]													
MV1280	Heat Pump - End to End SCADA Wiring - Point Testing from PLC to Field Eq.	[Actual Work]										[Remaining Work]			
MV1290	Heat Pump System - SCADA Functional Testing	[Actual Work]													
MV1300	Heat Pump - SCADA Heat Pump Start-up/Shut Down Programme Checking	[Actual Work]													
MV1310	Heat Pump system- SCADA Integrated Equipment Tests	[Actual Work]													
MV1320	Heat Pump - SCADA Operation of System in Full Auto Mode	[Actual Work]										[Remaining Work]			
<b>AHU, Fans &amp; Associated Distribution (including VAV, FCU, etc) B/F</b>															
MV1340	FCU Installations at LV Switch Rooms and Elect/ELV Rooms	[Actual Work]													
MV1350	Misc Ventilation Systems (various areas)	[Actual Work]													
<b>All Cabins (G/F to Roof) - incls AHU+Duct Riser+ VAV(if applicable)+ Final Air Grille</b>															
MV1360	BOH Cabin AHU - Chilled water Available - Initial AHU Start-up T&C	[Actual Work]													
MV1370	BOH Cabin AHU & Main Distribution Ducts - Initial System Air Balance for conditioned "Wild A	[Actual Work]													
MV1380	Target ALL Cabin AHU's Operational - providing conditioned "Wild Air" to Cabins	[Actual Work]													
MV1390	Cabins VAV Box -Progressive Power On for VAV Box & SCADA network	[Actual Work]													
MV1400	BOH Cabin AHU - Complete Final Airside Balancing for Main Duct Runs and at VAV boxes	[Actual Work]										[Remaining Work]			
MV1410	BOH Cabins AHU & VAV -Final SCADA Interfacing & Control for Air-side Equipment	[Actual Work]										[Remaining Work]			
MV1420	BOH Cabin AHU & VAV - Put SCADA in Auto / "Fine Tune" System Settings / Operation	[Actual Work]										[Remaining Work]			
MV1430	BOH cabins : FCU Installations at BOH Elect/ELV Rooms	[Actual Work]													
MV1440	CRAC System for Critical Rooms (Split Refrig. & Waterside Units) incl SCADA Interfacing	[Actual Work]													
MV1450	BOH Cabins : Misc Ventilation Systems (various areas)	[Actual Work]													
<b>G/F FOH Concourse - incls AHU+Duct Riser+ Drum Louvre /Final Air Grille</b>															
MV1460	FOH AHU - Chilled Water Available - Initial AHU Start-up T&C	[Actual Work]													
MV1470	FOH AHU & Main Distribution Ducts - Initial System Air Balance for "Wild Air"	[Actual Work]													
MV1480	Target 50% of FOH AHU's Operational - providing conditioned "Wild Air" to FOH	[Actual Work]													
MV1490	Target 100% of FOH AHU's Operational - providing conditioned "Wild Air" to FOH	[Actual Work]													
MV1500	FOH AHU, Distribution Duct & Drum Louvre - Final Airside Balancing for Main Duct Runs	[Actual Work]										[Remaining Work]			
MV1510	FOH Areas: AHU - Final SCADA Interfacing & Control for Air-side Equipment	[Actual Work]										[Remaining Work]			
MV1520	FOH Areas - Put AHU SCADA in Auto / "Fine Tune" System Settings / Operation	[Actual Work]										[Remaining Work]			
MV1530	R&G Channel, Kiosks and Retail: MVAC Installations T&C	[Actual Work]										[Remaining Work]			
<b>1/F FOH Concourse - incls AHU+Duct Riser+ VAV(if applicable)+ Final Air Grille</b>															
MV1540	FOH AHU - Chilled Water Available - Initial AHU Start-up T&C	[Actual Work]										[Remaining Work]			
MV1550	FOH AHU & Main Distribution Ducts - Initial System Air Balance for "Wild Air"	[Actual Work]										[Remaining Work]			
MV1560	Target 50% of FOH AHU's Operational - providing conditioned "Wild Air" to FOH	[Actual Work]										[Remaining Work]			
MV1570	Target 100% of FOH AHU's Operational - providing conditioned "Wild Air" to FOH	[Actual Work]										[Remaining Work]			
MV1580	FOH AHU, Distribution Duct & Drum Louvre - Final Airside Balancing for Main Duct Runs	[Actual Work]										[Remaining Work]			
MV1590	FOH Areas: AHU - Final SCADA Interfacing & Control for Air-side Equipment	[Actual Work]										[Remaining Work]			
MV1600	FOH Areas - Put AHU SCADA in Auto / "Fine Tune" System Settings / Operation	[Actual Work]										[Remaining Work]			
MV1610	R&G Channel, Kiosks and Retail: MVAC Installations T&C	[Actual Work]										[Remaining Work]			

Remark: The landscape work for Contract No. HY/2013/01 was commenced on 1 March 2018. The tentative completion date of related landscape work is end of July 2018.

█ Remaining Level of Effort   
█ Remaining Work   
█ Actual Work   
█ Critical Remaining Work   
◆ Milestone

# CONSTRUCTION SCHEDULE

## HKMZB HKBCF - Passenger Clearance Building

	2018		
TASK DESCRIPTION	Jun	Jul	Aug
<b>Remaining Work</b>			
E&M Defect Rectification			
Domestic Cleaning			
Tree Planting			
Painting			





Activity ID	Activity Name	2015												2016				2017				2018				2019		
		Q2	Q3	Q4	Q1	Q2	Q3	Q4	Q1	Q2	Q3	Q4	Q1	Q2	Q3	Q4	Q1	Q2	Q3	Q1	Q2	Q3						
AD1530	Location 12(Inbd Private Car Kiosks(027) Canopy)-Deg2 (480d) Phase 1																											
AD1531	Location 12(Inbd Private Car Kiosks(027) Canopy)-Deg2 (480d) Phase 2																											
AD1540	Location 12(Inbd GV Kiosks (028))-Deg1 (400d) Phase 1																											
AD1541	Location 12(Inbd GV Kiosks (028))-Deg1 (400d) Phase 2																											
AD1550	Location 12(Inbd GV Kiosks (028))-Deg2 (480d) Phase 1																											
AD1551	Location 12(Inbd GV Kiosks (028))-Deg2 (480d) Phase 2																											
AD1560	Location 12(Inbd GV Kiosks (028) Canopy)-Deg1 (400d) Phase 1																											
AD1561	Location 12(Inbd GV Kiosks (028) Canopy)-Deg1 (400d) Phase 2																											
AD1570	Location 12(Inbd GV Kiosks (028) Canopy)-Deg2 (480d) Phase 1																											
AD1571	Location 12(Inbd GV Kiosks (028) Canopy)-Deg2 (480d) Phase 2																											
AD1580	Location 12(Outbd GV Kiosks (029))-Deg1 (400d) Phase 1																											
AD1581	Location 12(Outbd GV Kiosks (029))-Deg1 (400d) Phase 2																											
AD1590	Location 12(Outbd GV Kiosks (029))-Deg2 (480d) Phase 1																											
AD1591	Location 12(Outbd GV Kiosks (029))-Deg2 (480d) Phase 2																											
AD1600	Location 12(Outbd GV Kiosks (029) Canopy)-Deg1 (400d) Phase 1																											
AD1601	Location 12(Outbd GV Kiosks (029) Canopy)-Deg1 (400d) Phase 2																											
AD1610	Location 12(Outbd GV Kiosks (029) Canopy)-Deg2 (480d) Phase 1																											
AD1611	Location 12(Outbd GV Kiosks (029) Canopy)-Deg2 (480d) Phase 2																											
AD1620	Location 13(Outbd Private Car Kiosks (030))-Deg1 (480d) Phase 1																											
AD1630	Location 13(Outbd Private Car Kiosks (030))-Deg2 (550d) Phase 1																											
AD1640	Location 13(Outbd Private Car Kiosks (030) Canopy)-Deg1 (480d) Phase 1																											
AD1650	Location 13(Outbd Private Car Kiosks (030) Canopy)-Deg2 (550d) Phase 1																											
AD1660	Location 14(Future-Outbd/Inbd Private Car Kiosks)-Deg1 (610d)																											
AD1670	Location 14(Future-Outbd/Inbd Private Car Kiosks)-Deg2 (680d)																											
AD1700	Location 16(Outbd Traffic Control Kiosk (101))-Deg1 (400d)																											
AD1710	Location 16(Outbd Traffic Control Kiosk (101))-Deg2 (480d)																											
AD1740	Location 18(Outbd Private Car Exam Bldg(024))-Deg1 (-)																											
AD1750	Location 18(Outbd Private Car Exam Bldg(024))-Deg2 (670d)																											
AD1780	(by C03) Underground Ducting (UUD1.1) between CUE and Inbd Cargo Exam Bldg (0																											
AD1790	(by C03) (UUD1.2) between Inbd Cargo Exam Bldg South (037[S]) and DOH Cargo C																											
AD1800	(by C03) (UUD2) between Inbd Cargo Exam Bldg North (037[N]) and Inbd Vehicle Cle																											
AD1810	(by C03) (UUD9.1) btw Inbd Cargo Exam Bldg S.(037[S]) & Inbd PC Exam Bldg(033) &																											
AD1820	(by C03) (UUD9.3) between Inbd Private Car Exam Bldg (033) and Inbd Vehicle Clear																											
AD1830	(by C03) (UUD9.2) between Inbd Private Car Exam Bldg (033) and Inbd Vehicle Clear																											
AD1840	(by C03) Underground Ducting (UUD3.1) between CUE to Outbd Cargo Exam Bldg (0																											
AD1850	(by C03) (UUD3.2) btw Outbd Car Exam Bldg (023) and Outbd PC Exam Bldg (024) ai																											
AD1860	(byC03) (UUD4.1) between Outbd Private Car Exam Bldg (024) and Outbd Vehicle Cle																											
AD1870	(byC03) (UUD5) between Outbd Car Exam Bldg South (023[S]) and Outbd Vehicle Cle																											
AD1880	(by C03) Underground Ducting (UUD8) between CUE and Outbd PCA (032)																											
AD1910	(by C03) Inbound Vehicle Clearance Plaza																											
AD1920	(by C03) Outbound Vehicle Clearance Plaza																											
<ul style="list-style-type: none"> <li> Interfaces Provisions</li> <li> Mobilization Provisions</li> <li> WA4 Site Erection &amp; Servicing</li> </ul>																												

Programme No.: HZMB-DWP Data Date: 14-Aug-15	<ul style="list-style-type: none"> <li> Actual Level of Effort</li> <li> Primary Baseline</li> <li> Actual Work</li> <li> Remaining Work</li> <li> Critical Remaining Work</li> <li> Baseline Milestone</li> <li> Milestone</li> </ul>	summary	<b>Hong Kong-Zhuhai-Macao Bridge</b> <b>Hong Kong Boundary Crossing</b> <b>Facilities - Automatic Vehicle</b> <b>Clearance Support System (AVCSS)</b>		<table border="1" style="width: 100%;"> <thead> <tr> <th>Date</th> <th>Revision</th> <th>Checked</th> <th>Approved</th> </tr> </thead> <tbody> <tr> <td>14-Nov-16</td> <td>Rev.: 0</td> <td>WC</td> <td>LC</td> </tr> <tr> <td>10-Mar-17</td> <td>Rev.: 1.0a</td> <td>WC</td> <td>LC</td> </tr> <tr> <td>5-May-17</td> <td>Rev.: 1.0b</td> <td>WC</td> <td>LC</td> </tr> </tbody> </table>	Date	Revision	Checked	Approved	14-Nov-16	Rev.: 0	WC	LC	10-Mar-17	Rev.: 1.0a	WC	LC	5-May-17	Rev.: 1.0b	WC	LC
Date	Revision	Checked	Approved																		
14-Nov-16	Rev.: 0	WC	LC																		
10-Mar-17	Rev.: 1.0a	WC	LC																		
5-May-17	Rev.: 1.0b	WC	LC																		



Activity ID	Activity Name	2015												2016				2017				2018				2019		
		Q2	Q3	Q4	Q1	Q2	Q3	Q4	Q1	Q2	Q3	Q4	Q1	Q2	Q3	Q4	Q1	Q2	Q3	Q1	Q2	Q3						
	<b>Detailed Design Specification</b>																											
	<b>Construction Design and Management</b>																											
	<b>Supply/Manufacture Mock-up items</b>																											
	<b>Supply/Manufacture prototypes</b>																											
	<b>Software Design, Coding and Testing</b>																											
	<b>Coding</b>																											
	<b>Software System Integration</b>																											
	<b>Prototype &amp; Software Simulation Tests</b>																											
	<b>Procurement - Phase 1 / Section I</b>																											
	<b>Supply/Manufacture products for FAT</b>																											
	<b>Factory Acceptance Test (FAT)</b>																											
	<b>Supply/Manufacture Equipment</b>																											
	<b>Delivery and Bench Acceptance Test for Phase 1/ Section I</b>																											
	<b>Installation - Phase 1 / Section I</b>																											
	<b>Location 1(PCB (001) Basement)</b>																											
EM1920	L1(001)B/F - Cable Laying and termination at Location 1 and Location 2																											
	<b>Location 1(PCB (001) ELV Room (Grid Line E3))</b>																											
EM1940	L1(001)ELV Rm - Cable Laying and termination at Location 1 and Location 2																											
	<b>Location 2(PCB (001) Ground Floor ELV Room (Grid Line E3))</b>																											
EM1960	L2(001)ELV Rm - Cable Laying and termination at Location 1 and Location 2																											
	<b>Location 2(PCB (001) Ground Floor DOH Port Health Control Room (Grid Line BD5))</b>																											
EM1080	L2(001)Heath Ctrl Rm - Cable Laying and termination at Location 1 and Location 2																											
EM1100	L2(001)Heath Ctrl Rm - Cable Splicing and Testing and Labeling																											
EM1120	L2(001)Health Ctrl Rm - Intercom and PA system Installation																											
EM1140	L2(001)Heath Ctrl Rm - Intercom and PA system tuning																											
	<b>Location 2(PCB (001) First Floor Main Server Room)</b>																											
EM1000	L2(001)Main Server Rm - Cable Laying and termination at Location 1 and Location 2																											
EM1020	L2(001)Main Server Rm - Cable Splicing and Testing and Labeling																											
EM1040	L2(001)Main Server Rm - AVCSS Network and Server Installation																											
EM1060	L2(001)Main Server Rm - AVCSS Network and Server Tuning																											
	<b>Location 3(Inbd Cargo Exam Bldg (037) MDF Room)</b>																											
	<b>Location 3(Inbd Cargo Exam Bldg (037) ELV Room)</b>																											
	<b>Location 3(Inbd Cargo Exam Bldg (037) Inspector Offices 128,129,130,131,128,129,141)</b>																											
EM2020	L3(037)Inspec Offices - Cable Laying and termination in Location 3 and Location 3a																											
EM2040	L3(037)Inspec Offices - Cable Splicing and Testing and Labeling																											
EM2060	L3(037)Inspec Offices - AVCSS SURCON WS and 55" LCD Installation																											
EM2080	L3(037)Inspec Offices - VTS WS Installation																											
EM2100	L3(037)Inspec Offices - SURCON and WS Tuning																											
	<b>Location 3(Inbd Cargo Exam Bldg (037) Platform Control Room)</b>																											
EM1160	L3(037)PLF Ctrl Rm - Cable Laying and termination in Location 3 and Location 3a																											
EM1180	L3(037)PLF Ctrl Rm - Cable Splicing and Testing and Labeling																											
EM1200	L3(037)PLF Ctrl Rm - AVCSS SYSCON WS and 55" TV Wall Installation																											
EM1220	L3(037)PLF Ctrl Rm - AVCSS SYSCON WS Tuning																											

01-Sep-17, Installation - Phase 1 / Section I  
 22-Jun-17, Location:1(PCB (001),Basement)  
 L1(001)B/F - Cable Laying and termination at Location  
 22-Jun-17, Location:1(PCB (001),ELV Room (Grid Line  
 L1(001)ELV Rm - Cable Laying and termination at Loca  
 22-Jun-17, Location:2(PCB (001),Ground Floor ELV R  
 L2(001)ELV Rm - Cable Laying and termination at Loca  
 18-Aug-17, Location:2(PCB (001),Ground Floor DO  
 L2(001)Heath Ctrl Rm - Cable Laying and termination  
 L2(001)Heath Ctrl Rm - Cable Splicing and Testing and  
 L2(001)Health Ctrl Rm - Intercom and PA system In  
 L2(001)Health Ctrl Rm - Intercom and PA system tu  
 21-Aug-17, Location:2(PCB (001) First Floor Main  
 L2(001)Main Server Rm - Cable Laying and terminatio  
 L2(001)Main Server Rm - Cable Splicing and Testing  
 L2(001)Main Server Rm - AVCSS Network and Ser  
 L2(001)Main Server Rm - AVCSS Network and Se  
 07-Aug-17, Location 3(Inbd Cargo Exam Bldg (037  
 L3(037)Inspec Offices - Cable Laying and termination i  
 L3(037)Inspec Offices - Cable Splicing and Testing and  
 L3(037)Inspec Offices - AVCSS SURCON WS and 5  
 L3(037)Inspec Offices - VTS WS Installation  
 L3(037)Inspec Offices - SURCON and WS Tuning  
 07-Aug-17, Location 3(Inbd Cargo Exam Bldg (037  
 L3(037)PLF Ctrl Rm - Cable Laying and termination in  
 L3(037)PLF Ctrl Rm - Cable Splicing and Testing and  
 L3(037)PLF Ctrl Rm - AVCSS SYSCON WS and 55  
 L3(037)PLF Ctrl Rm - AVCSS SYSCON WS Tuning

Programme No.: HZMB-DWP Data Date: 14-Aug-15		summary	Hong Kong-Zhuhai-Macao Bridge Hong Kong Boundary Crossing Facilities - Automatic Vehicle Clearance Support System (AVCSS)	Date	Revision	Checked	Approved
				14-Nov-16	Rev.: 0	WC	LC
				10-Mar-17	Rev.: 1.0a	WC	LC
				5-May-17	Rev.: 1.0b	WC	LC

Activity ID	Activity Name	2015			2016				2017				2018				2019		
		Q2	Q3	Q4	Q1	Q2	Q3	Q4	Q1	Q2	Q3	Q4	Q1	Q2	Q3	Q4	Q1	Q2	Q3
<b>Location 3a(Inbd Cargo Exam Bldg (037) ROCARS Room)</b>		<ul style="list-style-type: none"> <li>EM1240 L3a(037) ROCARS Rm - Cable Laying and termination in Location 3 and Location 3a</li> <li>EM1260 L3a(037) ROCARS Rm - Cable Splicing and Testing and Labeling</li> <li>EM1280 L3a(037) ROCARS Rm - AVCSS SYSCON and SURCON and Intercom Installation</li> <li>EM1300 L3a(037) ROCARS Rm - VTS WS Installation</li> <li>EM1320 L3a(037) ROCARS Rm - VID WS Installation</li> <li>EM1340 L3a(037) ROCARS Rm - SURCON and SYSCON and WS Tuning</li> </ul>																	
<b>Location 3a(Inbd Cargo Exam Bldg (037) Main Server Room)</b>		<ul style="list-style-type: none"> <li>EM2120 L3a(037)Main Server Rm - Cable Laying and termination in Location 3 and Location 3a</li> <li>EM2140 L3a(037)Main Server Rm - Cable Splicing and Testing and Labeling</li> <li>EM2160 L3a(037)Main Server Rm - AVCSS Server Installation</li> <li>EM2180 L3a(037)Main Server Rm - VTS Server Installation</li> <li>EM2200 L3a(037)Main Server Rm - Servers Tuning</li> </ul>																	
<b>Location 4(Outbd Cargo Exam Bldg (023) MDF Room)</b>		<ul style="list-style-type: none"> <li>EM2240 L4a(023)ROCARS Rm - Cable Splicing and Testing and Labeling</li> <li>EM2260 L4a(023)ROCARS Rm - AVCSS SYSCON and SURCON and Intercom Installation</li> <li>EM2280 L4a(023)ROCARS Rm - VTS WS Installation</li> <li>EM2300 L4a(023)ROCARS Rm - SYSCON and SURCON and WS Tuning</li> </ul>																	
<b>Location 4a(Outbd Cargo Exam Bldg (023) ROCARS Room)</b>		<ul style="list-style-type: none"> <li>EM2240 L4a(023)ROCARS Rm - Cable Splicing and Testing and Labeling</li> <li>EM2260 L4a(023)ROCARS Rm - AVCSS SYSCON and SURCON and Intercom Installation</li> <li>EM2280 L4a(023)ROCARS Rm - VTS WS Installation</li> <li>EM2300 L4a(023)ROCARS Rm - SYSCON and SURCON and WS Tuning</li> </ul>																	
<b>Location 5(Common Utility Enclosure &amp; Staff Subway)</b>		<ul style="list-style-type: none"> <li>EM2341 L5(CUE) - Cable Laying between Location 5 and Location 6</li> <li>EM2361 L5(CUE) - Cable Laying between Location 5 and Location 7</li> <li>EM2380 L5(CUE) - Cable Splicing and Testing and Labeling</li> </ul>																	
<b>Location 6(Common Utility Enclosure &amp; Staff Subway)</b>		<ul style="list-style-type: none"> <li>EM2400 L6(CUE) - Cable Laying between Location 5 and Location 6</li> <li>EM2420 L6(CUE) - Cable Splicing and Testing and Labeling</li> </ul>																	
<b>Location 7(Common Utility Enclosure &amp; Staff Subway)</b>		<ul style="list-style-type: none"> <li>EM2440 L7(CUE) - Cable Laying between Location 5 and Location 7</li> <li>EM2460 L7(CUE) - Cable Splicing and Testing and Labeling</li> </ul>																	
<b>Location 12(Inbd Private Car Kiosks,GV Kiosks (027,028,029))</b>		<ul style="list-style-type: none"> <li><b>Inbd Private Car Kiosks(027) - 9 nos (Phase 1)</b> <ul style="list-style-type: none"> <li>EM1500 L12(027)(9nos P1) - Cable Splicing and Testing and Labeling</li> <li>EM1520 L12(027)(9nos P1) - AVCSS/MOM Kiosk Equipment Installation (9 nos)</li> <li>EM1541 L12(027)(9nos P1) - XDB installation (18 nos)</li> <li>EM1542 L12(027)(9nos P1) - ODB installation (5 nos)</li> <li>EM1543 L12(027)(9nos P1) - ODB installation (2 nos)</li> <li>EM1544 L12(027)(9nos P1) - ODB installation (2 nos)</li> <li>EM1560 L12(027)(9nos P1) - Loop installation (45 nos)</li> </ul> </li> <li><b>Inbd Goods Vehicle Kiosks(028) - 5 nos (Phase 1)</b> <ul style="list-style-type: none"> <li>EM1620 L12(028)(5nos P1) - Cable Laying and termination</li> <li>EM1640 L12(028)(5nos P1) - Cable Splicing and Testing and Labeling</li> <li>EM1660 L12(028)(5nos P1) - AVCSS/MOM Kiosk Equipment Installation (5 nos)</li> <li>EM1681 L12(028)(5nos P1) - XDB installation (10 nos)</li> <li>EM1682 L12(028)(5nos P1) - ODB installation (3 nos)</li> <li>EM1683 L12(028)(5nos P1) - ODB installation (2 nos)</li> </ul> </li> </ul>																	

Programme No.: HZMB-DWP  
Data Date: 14-Aug-15

- Actual Level of Effort
- Primary Baseline
- Actual Work
- Remaining Work
- Critical Remaining Work
- Baseline Milestone
- Milestone

Hong Kong-Zhuhai-Macao Bridge  
Hong Kong Boundary Crossing  
Facilities - Automatic Vehicle  
Clearance Support System (AVCSS)

Date	Revision	Checked	Approved
14-Nov-16	Rev.: 0	WC	LC
10-Mar-17	Rev.: 1.0a	WC	LC
5-May-17	Rev.: 1.0b	WC	LC



Activity ID	Activity Name	2015			2016				2017				2018				2019				
		Q2	Q3	Q4	Q1	Q2	Q3	Q4	Q1	Q2	Q3	Q4	Q1	Q2	Q3	Q4	Q1	Q2	Q3		
EM1700	L12(028)(5nos P1) - AIOP Installation (5 nos)																				
EM1720	L12(028)(5nos P1) - Loop installation (25 nos)																				
<b>Outbd Goods Vehicle Kiosks(029) - 5 nos (Phase 1)</b>																					
EM1740	L12(029)(5nos P1) - Cable Containment in Kiosks																				
EM1760	L12(029)(5nos P1) - Cable Laying and termination																				
EM1780	L12(029)(5nos P1) - Cable Splicing and Testing and Labeling																				
EM1800	L12(029)(5nos P1) - AVCSS/MOM Kiosk Equipment Installation (5 nos)																				
EM1821	L12(029)(5nos P1) - XDB installation (5 nos)																				
EM1822	L12(029)(5nos P1) - ODB installation (4 nos)																				
EM1823	L12(029)(5nos P1) - ODB installation (1 nos)																				
EM1840	L12(029)(5nos P1) - AIOP Installation (5 nos)																				
<b>Location 13(Outbd Private Car Kiosks (030)) - 9 nos (Phase 1)</b>																					
EM2520	L13(030)(9nos P1) - Cable Containment in Kiosks																				
EM2540	L13(030)(9nos P1) - Cable Laying and termination																				
EM2560	L13(030)(9nos P1) - Cable Splicing and Testing and Labeling																				
EM2580	L13(030)(9nos P1) - AVCSS/MOM Kiosk Equipment Installation (9 nos)																				
EM2601	L13(030)(9nos P1) - XDB installation (9 nos)																				
EM2602	L13(030)(9nos P1) - ODB installation (7 nos)																				
<b>Location 14(Future-Outbd/Inbd Private Car Kiosks) - 6+6 nos</b>																					
EM1440	L14 - Cable Laying and termination at ELV Room in CUE																				
<b>Location 15(Inbd Traffic Control Kiosk (100))</b>																					
<b>Location 16(Outbd Traffic Control Kiosk (101))</b>																					
EM2760	L16(101) - Cable Laying and termination																				
EM2780	L16(101) - Cable Splicing and Testing and Labeling																				
EM2800	L16(101) - AVCSS SYSCON and SURCON Installation																				
EM2820	L16(101) - VTS WS and 55" LCD Installation																				
<b>Location 17(Inbd Private Car Exam Bldg(033) Operational Office)</b>																					
<b>Location 18 (Outbd Private Car Exam Bldg(024) Operational Office)</b>																					
EM2940	L18(024) - Cable Laying and termination																				
EM2960	L18(024) - Cable Splicing and Testing and Labeling																				
EM2980	L18(024) - AVCSS SURCON and 55" LCD Installation																				
EM3000	L18(024) - SURCON Tuning																				
<b>Location 19 (DOH Cargo Clearance Bldg(043))</b>																					
EM1360	L19(043) - Cable Laying and termination																				
EM1380	L19(043) - Cable Splicing and Testing and Labeling																				
EM1400	L19(043) - PA and Intercom Installation																				
EM1420	L19(043) - PA and Intercom Tuning																				
<b>Inbd Vehicle Clearance Plaza - 8 nos VID, 7 nos VTS, 4 nos TLS</b>																					
EM3020	Inbound VID cabling from pillar box to VID field equipment																				
EM3040	Inbound VTS cabling from pillar box to VTS field equipment																				
EM3060	Inbound TLS cabling from pillar box to TLS field equipment																				
EM3080	Inbound VID field equipment installation (8 VID)																				
EM3100	Inbound VTS field equipment installation (4 RFID + 3 Cameras)																				
EM3120	Inbound TLS field equipment installation (4 TLS)																				
EM3140	Inbound VID and VTS and TLS field equipment tuning																				

Programme No.: HZMB-DWP  
Data Date: 14-Aug-15

- Actual Level of Effort
- Primary Baseline
- Actual Work
- Remaining Work
- Critical Remaining Work
- Baseline Milestone
- Milestone

**Hong Kong-Zhuhai-Macao Bridge  
Hong Kong Boundary Crossing  
Facilities - Automatic Vehicle  
Clearance Support System (AVCSS)**

Date	Revision	Checked	Approved
14-Nov-16	Rev.: 0	WC	LC
10-Mar-17	Rev.: 1.0a	WC	LC
5-May-17	Rev.: 1.0b	WC	LC


Activity ID	Activity Name	2015																		2016																		2017																		2018																		2019																	
		Q2			Q3			Q4			Q1			Q2			Q3			Q4			Q1			Q2			Q3			Q4			Q1			Q2			Q3			Q4																																															
		Q2	Q3	Q4	Q1	Q2	Q3	Q4	Q1	Q2	Q3	Q4	Q1	Q2	Q3	Q4	Q1	Q2	Q3	Q4	Q1	Q2	Q3	Q4	Q1	Q2	Q3	Q4	Q1	Q2	Q3	Q4																																																											
<b>Outbd Vehicle Clearance Plaza - 8 nos VID, 6 nos VTS, 4 nos TLS</b>		<div style="display: flex; justify-content: space-between;"> <span>02-Aug-17, Outbd Vehicle Clearance Plaza - 8 nos V</span> <span>02-Aug-17, Outbd Vehicle Clearance Plaza - 8 nos V</span> </div>																																																																																									
EM3160	Outbound VID cabling from pillar box to VID field equipment	<div style="display: flex; justify-content: space-between;"> <span>02-Aug-17, Outbound VID cabling from pillar box to VID field equi</span> <span>02-Aug-17, Outbound VID cabling from pillar box to VID field equi</span> </div>																																																																																									
EM3180	Outbound VTS cabling from pillar box to VTS field equipment	<div style="display: flex; justify-content: space-between;"> <span>02-Aug-17, Outbound VTS cabling from pillar box to VTS field equi</span> <span>02-Aug-17, Outbound VTS cabling from pillar box to VTS field equi</span> </div>																																																																																									
EM3200	Outbound TLS cabling from pillar box to TLS field equipment	<div style="display: flex; justify-content: space-between;"> <span>02-Aug-17, Outbound TLS cabling from pillar box to TLS field equ</span> <span>02-Aug-17, Outbound TLS cabling from pillar box to TLS field equ</span> </div>																																																																																									
EM3220	Outbound VID field equipment installation (8 VID)	<div style="display: flex; justify-content: space-between;"> <span>02-Aug-17, Outbound VID field equipment installation (8 VID)</span> <span>02-Aug-17, Outbound VID field equipment installation (8 VID)</span> </div>																																																																																									
EM3240	Outbound VTS field equipment installation (3 RFID + 3 Cameras)	<div style="display: flex; justify-content: space-between;"> <span>02-Aug-17, Outbound VTS field equipment installation (3 RFID +</span> <span>02-Aug-17, Outbound VTS field equipment installation (3 RFID +</span> </div>																																																																																									
EM3260	Outbound TLS field equipment installation (4 TLS)	<div style="display: flex; justify-content: space-between;"> <span>02-Aug-17, Outbound TLS field equipment installation (4 TLS)</span> <span>02-Aug-17, Outbound TLS field equipment installation (4 TLS)</span> </div>																																																																																									
EM3280	Outbound VID and VTS and TLS field equipment tuning	<div style="display: flex; justify-content: space-between;"> <span>02-Aug-17, Outbound VID and VTS and TLS field equipment tun</span> <span>02-Aug-17, Outbound VID and VTS and TLS field equipment tun</span> </div>																																																																																									
<b>Underground Ducting (UUD1.1) between CUE and Inbd Cargo Exam Bldg (037)</b>		<div style="display: flex; justify-content: space-between;"> <span>13-Jun-17, Underground Ducting (UUD1.1) between C</span> <span>13-Jun-17, Underground Ducting (UUD1.1) between C</span> </div>																																																																																									
UD1000	(UUD1.1 [CUE-037]) - Cable laying and termination	<div style="display: flex; justify-content: space-between;"> <span>(UUD1.1 [CUE-037]) - Cable laying and termination;</span> <span>(UUD1.1 [CUE-037]) - Cable laying and termination;</span> </div>																																																																																									
<b>(UUD1.2) between Inbd Cargo Exam Bldg South (037[S]) and DOH Cargo Clearance Bldg (037[S])</b>		<div style="display: flex; justify-content: space-between;"> <span>27-Jun-17, (UUD1.2) between Inbd Cargo Exam Bldg</span> <span>27-Jun-17, (UUD1.2) between Inbd Cargo Exam Bldg</span> </div>																																																																																									
UD1060	(UUD1.2 [037[S]-043]) - Cable laying and termination	<div style="display: flex; justify-content: space-between;"> <span>(UUD1.2 [037[S]-043]) - Cable laying and termination</span> <span>(UUD1.2 [037[S]-043]) - Cable laying and termination</span> </div>																																																																																									
<b>Underground Ducting (UUD6) between CUE and Shuttle Bus Kiosk (006) and Inbd Private Car Exam Bldg (033)</b>		<div style="display: flex; justify-content: space-between;"> <span>12-Jul-17, (UUD9.1) btw IB Cargo Exam Bldg South(</span> <span>12-Jul-17, (UUD9.1) btw IB Cargo Exam Bldg South(</span> </div>																																																																																									
<b>(UUD9.1) btw IB Cargo Exam Bldg South(037[S]) &amp; IB PC Exam Bldg(033) &amp; IB Traffic Control Bldg (033)</b>		<div style="display: flex; justify-content: space-between;"> <span>(UUD9.1 [037[S]-033-100]) - Cable laying and termina</span> <span>(UUD9.1 [037[S]-033-100]) - Cable laying and termina</span> </div>																																																																																									
UD1040	(UUD9.1 [037[S]-033-100]) - Cable laying and termination	<div style="display: flex; justify-content: space-between;"> <span>(UUD9.1 [037[S]-033-100]) - Cable laying and termina</span> <span>(UUD9.1 [037[S]-033-100]) - Cable laying and termina</span> </div>																																																																																									
<b>(UUD2) between Inbd Cargo Exam Bldg North (037[N]) to Inbd VCP</b>		<div style="display: flex; justify-content: space-between;"> <span>26-Jul-17, (UUD2) between Inbd Cargo Exam Bldg I</span> <span>26-Jul-17, (UUD2) between Inbd Cargo Exam Bldg I</span> </div>																																																																																									
UD1010	(UUD2 [037[N]-IB VCP]) - Cable laying and termination	<div style="display: flex; justify-content: space-between;"> <span>(UUD2 [037[N]-IB VCP]) - Cable laying and terminat</span> <span>(UUD2 [037[N]-IB VCP]) - Cable laying and terminat</span> </div>																																																																																									
<b>(UUD9.3) between Inbd Private Car Exam Bldg (033) and Inbd Vehicle Clearance Plaza</b>		<div style="display: flex; justify-content: space-between;"> <span>09-Aug-17, (UUD9.3) between Inbd Private Car Ex</span> <span>09-Aug-17, (UUD9.3) between Inbd Private Car Ex</span> </div>																																																																																									
UD1070	(UUD9.3 [033-IB VCP[W]]) - Cable laying and termination	<div style="display: flex; justify-content: space-between;"> <span>(UUD9.3 [033-IB VCP[W]]) - Cable laying and termi</span> <span>(UUD9.3 [033-IB VCP[W]]) - Cable laying and termi</span> </div>																																																																																									
<b>(UUD9.2) between Inbd Private Car Exam Bldg (033) and Inbd Vehicle Clearance Plaza</b>		<div style="display: flex; justify-content: space-between;"> <span>23-Aug-17, (UUD9.2) between Inbd Private Car E</span> <span>23-Aug-17, (UUD9.2) between Inbd Private Car E</span> </div>																																																																																									
UD1020	(UUD9.2 [033-IB VCP[E]]) - Cable laying and termination	<div style="display: flex; justify-content: space-between;"> <span>(UUD9.2 [033-IB VCP[E]]) - Cable laying and termi</span> <span>(UUD9.2 [033-IB VCP[E]]) - Cable laying and termi</span> </div>																																																																																									
<b>Underground Ducting (UUD7) between PCB(001) and Inbd Coach Kiosks(010)</b>		<div style="display: flex; justify-content: space-between;"> <span>14-Jun-17, Underground Ducting (UUD3.1) between C</span> <span>14-Jun-17, Underground Ducting (UUD3.1) between C</span> </div>																																																																																									
<b>Underground Ducting (UUD3.1) between CUE and Outbd Cargo Exam Bldg (023)</b>		<div style="display: flex; justify-content: space-between;"> <span>(UUD3.1 [CUE-023]) - Cable laying and termination;</span> <span>(UUD3.1 [CUE-023]) - Cable laying and termination;</span> </div>																																																																																									
UD1030	(UUD3.1 [CUE-023]) - Cable laying and termination	<div style="display: flex; justify-content: space-between;"> <span>(UUD3.1 [CUE-023]) - Cable laying and termination;</span> <span>(UUD3.1 [CUE-023]) - Cable laying and termination;</span> </div>																																																																																									
<b>(UUD3.2) btw OB Car Exam Bldg(023) &amp; OB PC Exam Bldg(024) &amp; OB Traffic Control Bldg (023)</b>		<div style="display: flex; justify-content: space-between;"> <span>28-Jun-17, (UUD3.2) btw OB Car Exam Bldg(023) &amp; C</span> <span>28-Jun-17, (UUD3.2) btw OB Car Exam Bldg(023) &amp; C</span> </div>																																																																																									
UD1050	(UUD3.2 [023-024-101]) - Cable laying and termination	<div style="display: flex; justify-content: space-between;"> <span>(UUD3.2 [023-024-101]) - Cable laying and termination</span> <span>(UUD3.2 [023-024-101]) - Cable laying and termination</span> </div>																																																																																									
<b>Underground Ducting (UUD8) between CUE and Outbd PCA (032)</b>		<div style="display: flex; justify-content: space-between;"> <span>13-Jun-17, Underground Ducting (UUD8) between CU</span> <span>13-Jun-17, Underground Ducting (UUD8) between CU</span> </div>																																																																																									
UD1100	(UUD8 [CUE-032]) - Cable laying and termination	<div style="display: flex; justify-content: space-between;"> <span>(UUD8 [CUE-032]) - Cable laying and termination</span> <span>(UUD8 [CUE-032]) - Cable laying and termination</span> </div>																																																																																									
<b>(UUD4.1) between Outbd PC Exam Bldg (024) and Outbd Vehicle Clearance Plaza</b>		<div style="display: flex; justify-content: space-between;"> <span>13-Jul-17, (UUD4.1) between Outbd PC Exam Bldg(</span> <span>13-Jul-17, (UUD4.1) between Outbd PC Exam Bldg(</span> </div>																																																																																									
UD1080	(UUD4.1 [024-OB VCP]) - Cable laying and termination	<div style="display: flex; justify-content: space-between;"> <span>(UUD4.1 [024-OB VCP]) - Cable laying and terminat</span> <span>(UUD4.1 [024-OB VCP]) - Cable laying and terminat</span> </div>																																																																																									
<b>(UUD5) between Outbd Car Exam Bldg (023[S]) and Outbd Vehicle Clearance Plaza</b>		<div style="display: flex; justify-content: space-between;"> <span>27-Jun-17, (UUD5) between Outbd Car Exam Bldg (02</span> <span>27-Jun-17, (UUD5) between Outbd Car Exam Bldg (02</span> </div>																																																																																									
UD1090	(UUD5 [023[S]-OB VCP]) - Cable laying and termination	<div style="display: flex; justify-content: space-between;"> <span>(UUD5 [023[S]-OB VCP]) - Cable laying and terminat</span> <span>(UUD5 [023[S]-OB VCP]) - Cable laying and terminat</span> </div>																																																																																									
<b>Initial On-Site Test and Commissioning / Pre-SAT (Phase 1 / Section I)</b>		<div style="display: flex; justify-content: space-between;"> <span>30-Aug-17, Installation -Phase 2/ Section II</span> <span>30-Aug-17, Installation -Phase 2/ Section II</span> </div>																																																																																									
<b>Site Acceptance Test (Phase 1 / Section I)</b>																																																																																											
<b>Security Risk Assessment and Audit</b>																																																																																											
<b>Operability Period Test (Phase 1 / Section I)</b>																																																																																											
<b>Completion (Phase 1 /Section I)</b>																																																																																											
<b>Training and Document (Phase 1 /Section I)</b>																																																																																											
<b>Operation (Phase 1 /Section I)</b>																																																																																											
<b>Engineering Support for Phase 1 / Section I</b>																																																																																											
<b>Procurement - Phase 2 / Section II</b>																																																																																											
<b>Delivery and Bench Acceptance Test for Phase 2/Section II</b>																																																																																											
<b>Installation - Phase 2 / Section II</b>																																																																																											

Programme No.: HZMB-DWP Data Date: 14-Aug-15		Hong Kong-Zhuhai-Macao Bridge Hong Kong Boundary Crossing Facilities - Automatic Vehicle Clearance Support System (AVCSS)	Date	Revision	Checked	Approved
			14-Nov-16	Rev.: 0	WC	LC
			10-Mar-17	Rev.: 1.0a	WC	LC
			5-May-17	Rev.: 1.0b	WC	LC














Activity ID	Activity Name	2015			2016				2017				2018				2019			
		Q2	Q3	Q4	Q1	Q2	Q3	Q4	Q1	Q2	Q3	Q4	Q1	Q2	Q3	Q4	Q1	Q2	Q3	
	<ul style="list-style-type: none"> <li> Site Acceptance Test (Phase 2 / Section III)</li> <li> Operability Period Test (Phase 2 / Section III)</li> <li> Completion (Phase 2 / Section III)</li> <li> Operation (Phase 2 / Section III)</li> <li> Defect Liability Period (DLP)</li> <li> Document Submission (Phase 2 / Section III)</li> </ul>																			

Programme No.: HZMB-DWP  
Data Date: 14-Aug-15

-  Actual Level of Effort
-  Primary Baseline
-  Actual Work
-  Remaining Work
-  Critical Remaining Work
-  Baseline Milestone
-  Milestone

Hong Kong-Zhuhai-Macao Bridge  
Hong Kong Boundary Crossing  
Facilities - Automatic Vehicle  
Clearance Support System (AVCSS)

Date	Revision	Checked	Approved
14-Nov-16	Rev.: 0	WC	LC
10-Mar-17	Rev.: 1.0a	WC	LC
5-May-17	Rev.: 1.0b	WC	LC