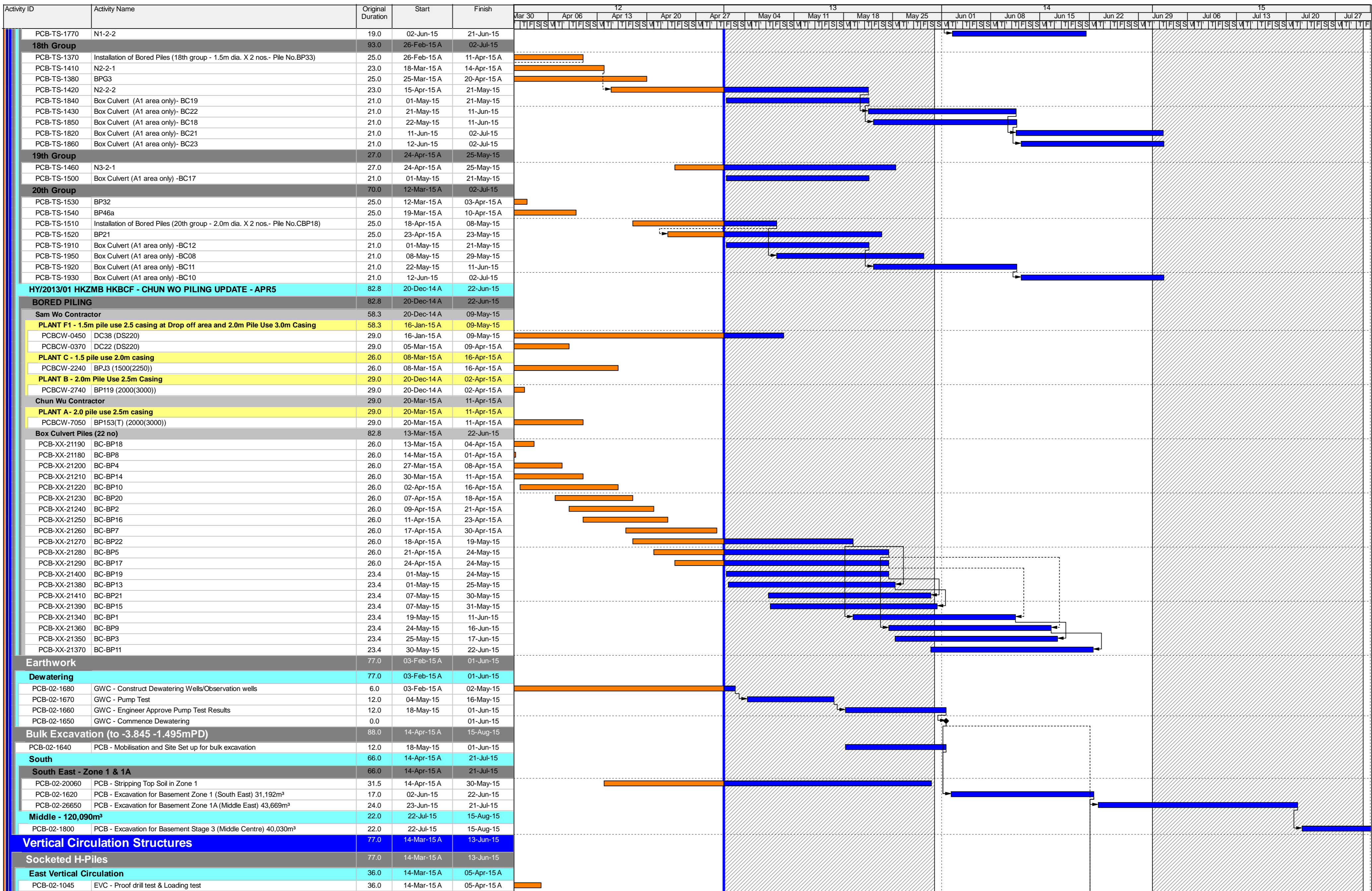


Activity ID	Activity Name	Original Duration	Start	Finish	12							13							14							15						
					Mar 30	Apr 06	Apr 13	Apr 20	Apr 27	May 04	May 11	May 18	May 25	Jun 01	Jun 08	Jun 15	Jun 22	Jun 29	Jul 06	Jul 13	Jul 20	Jul 27										
<b>HY/2013/01 HKZMB HKBCF - PCB - Initial 3MRP - Apr 2015</b>					[Gantt chart grid with activity bars]																											
<b>PROCUREMENT, MANUFACTURING &amp; DELIVERIES</b>					[Gantt chart grid with activity bars]																											
<b>Procurement, Manufacturing; Deliveries</b>					[Gantt chart grid with activity bars]																											
<b>Structural Steel Roof</b>					[Gantt chart grid with activity bars]																											
<b>Structural Steelwork (Materials)</b>					[Gantt chart grid with activity bars]																											
PCB-1060 Award sub-contractor (Steel Roof Erection)					[Gantt chart grid with activity bars]																											
<b>CONSTRUCTION</b>					[Gantt chart grid with activity bars]																											
<b>Passenger Clearance Building</b>					[Gantt chart grid with activity bars]																											
<b>Piling</b>					[Gantt chart grid with activity bars]																											
<b>HY/2013/01 HKZMB HKBCF - TYSAN PILING UPDATE - APR5</b>					[Gantt chart grid with activity bars]																											
<b>1st Group</b>					[Gantt chart grid with activity bars]																											
PCB-TS-1610 Box Culvert (A1 area only) - BC36					[Gantt chart grid with activity bars]																											
PCB-TS-0220 Box Culvert (A1 area only) - BC38					[Gantt chart grid with activity bars]																											
PCB-TS-0420 Box Culvert (A1 area only) - BC37					[Gantt chart grid with activity bars]																											
PCB-TS-1620 Box Culvert (A1 area only) - BC35					[Gantt chart grid with activity bars]																											
<b>2nd Group</b>					[Gantt chart grid with activity bars]																											
PCB-TS-1630 Box Culvert (A1 area only) - BC32					[Gantt chart grid with activity bars]																											
PCB-TS-1640 Box Culvert (A1 area only) - BC31					[Gantt chart grid with activity bars]																											
PCB-TS-0310 Box Culvert (A1 area only) - BC33					[Gantt chart grid with activity bars]																											
PCB-TS-0300 Box Culvert (A1 area only) - BC34					[Gantt chart grid with activity bars]																											
<b>3rd Group</b>					[Gantt chart grid with activity bars]																											
PCB-TS-0380 BP90					[Gantt chart grid with activity bars]																											
PCB-TS-0390 Box Culvert (A1 Area only) - BC30					[Gantt chart grid with activity bars]																											
PCB-TS-0400 Box Culvert (A1 Area only) - BC29					[Gantt chart grid with activity bars]																											
<b>4th Group</b>					[Gantt chart grid with activity bars]																											
PCB-TS-0480 BP42					[Gantt chart grid with activity bars]																											
PCB-TS-0460 BP67					[Gantt chart grid with activity bars]																											
<b>5th Group</b>					[Gantt chart grid with activity bars]																											
PCB-TS-0560 CBP16					[Gantt chart grid with activity bars]																											
PCB-TS-0540 CBP17					[Gantt chart grid with activity bars]																											
PCB-TS-0550 CBP15					[Gantt chart grid with activity bars]																											
<b>6th Group</b>					[Gantt chart grid with activity bars]																											
PCB-TS-0590 CBP3					[Gantt chart grid with activity bars]																											
PCB-TS-0620 BP10					[Gantt chart grid with activity bars]																											
PCB-TS-0640 BP22					[Gantt chart grid with activity bars]																											
PCB-TS-0630 BP11					[Gantt chart grid with activity bars]																											
PCB-TS-1660 Box Culvert (A1 area only) - BC01					[Gantt chart grid with activity bars]																											
PCB-TS-1670 Box Culvert (A1 area only) - BC02					[Gantt chart grid with activity bars]																											
PCB-TS-1680 Box Culvert (A1 area only) - BC03					[Gantt chart grid with activity bars]																											
<b>7th Group</b>					[Gantt chart grid with activity bars]																											
PCB-TS-0710 BP58					[Gantt chart grid with activity bars]																											
PCB-TS-0720 BP59					[Gantt chart grid with activity bars]																											
PCB-TS-1700 Box Culvert (A1 area only) - BC05					[Gantt chart grid with activity bars]																											
PCB-TS-1710 Box Culvert (A1 area only) - BC06					[Gantt chart grid with activity bars]																											
PCB-TS-1720 Box Culvert (A1 area only) - BC07					[Gantt chart grid with activity bars]																											
<b>8th Group</b>					[Gantt chart grid with activity bars]																											
PCB-TS-0790 BP31					[Gantt chart grid with activity bars]																											
PCB-TS-0800 BP46					[Gantt chart grid with activity bars]																											
<b>9th Group</b>					[Gantt chart grid with activity bars]																											
PCB-TS-0860 BP70					[Gantt chart grid with activity bars]																											
PCB-TS-0880 BP72					[Gantt chart grid with activity bars]																											
PCB-TS-0870 BP71					[Gantt chart grid with activity bars]																											
<b>11th Group</b>					[Gantt chart grid with activity bars]																											
PCB-TS-0990 BP17					[Gantt chart grid with activity bars]																											
<b>13th Group</b>					[Gantt chart grid with activity bars]																											
PCB-TS-1150 BP69					[Gantt chart grid with activity bars]																											
PCB-TS-1140 BP86					[Gantt chart grid with activity bars]																											
PCB-TS-1120 BP77					[Gantt chart grid with activity bars]																											
<b>16th Group</b>					[Gantt chart grid with activity bars]																											
PCB-TS-1270 Installation of Bored Piles (16th group - 2.5m dia. X 2 nos.- Pile No.BP83)					[Gantt chart grid with activity bars]																											
PCB-TS-1280 BP85					[Gantt chart grid with activity bars]																											
<b>17th Group</b>					[Gantt chart grid with activity bars]																											
PCB-TS-1360 N1-2-1					[Gantt chart grid with activity bars]																											
PCB-TS-1330 BPF3					[Gantt chart grid with activity bars]																											
PCB-TS-1800 Box Culvert (A1 area only) - BC24					[Gantt chart grid with activity bars]																											
PCB-TS-1780 Box Culvert (A1 area only) - BC26					[Gantt chart grid with activity bars]																											
PCB-TS-1810 Box Culvert (A1 area only) - BC23					[Gantt chart grid with activity bars]																											
PCB-TS-1790 Box Culvert (A1 area only) - BC25					[Gantt chart grid with activity bars]																											

- █ Actual Work
- █ Remaining Work
- █ Critical Remaining Work
- ◆ Milestone

THREE MONTH ROLLING PROGRAMME

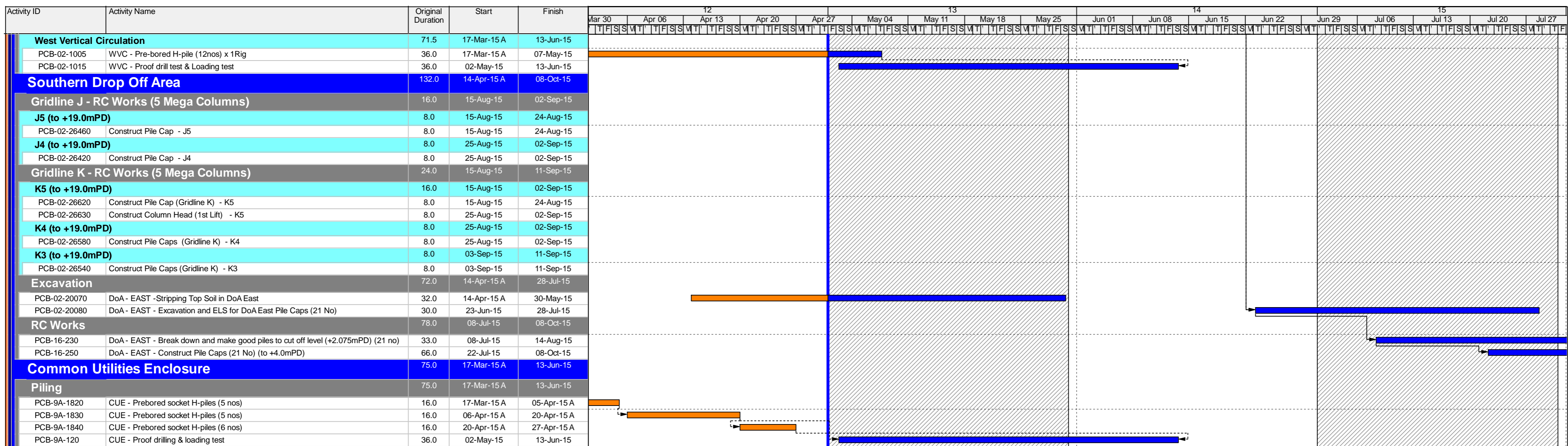
Date	Revision	Checked	Approved
01-May-15	3 Month Rolling Programme - 1st May 2015	SGJ	



THREE MONTH ROLLING PROGRAMME

- Actual Work
- Remaining Work
- Critical Remaining Work
- Milestone

Date	Revision	Checked	Approved
01-May-15	3 Month Rolling Programme - 1st May 2015	SGJ	



- █ Actual Work
- █ Remaining Work
- █ Critical Remaining Work
- ◆ Milestone

THREE MONTH ROLLING PROGRAMME

Date	Revision	Checked	Approved
01-May-15	3 Month Rolling Programme - 1st May 2015	SGJ	