

Activity ID	Activity Name	Original Duration	Start	Finish	18																																							
					18	19	20	21	22	23	24	25	26	27	28	29	30	31	01	02	03	04	05	06	07	08	09	10	11	12	13	14	15	16	17	18	19	20	21	22	23	24	25	26
HY/2013/01 HKZMB HKBCF - PCB - 3MRP - September		200	02-Jul-15 A	06-May-16	[Gantt chart area with hatched background]																																							
CONSTRUCTION		200	02-Jul-15 A	06-May-16																																								
Passenger Clearance Building		129	02-Jul-15 A	25-Feb-16	[Gantt chart area with hatched background]																																							
Earthwork		106	20-Aug-15 A	21-Dec-15																																								
Bulk Excavation (to -3.845 -1.495mPD)		106	20-Aug-15 A	21-Dec-15	[Gantt chart area with hatched background]																																							
South - 161230m³		81	08-Sep-15 A	21-Dec-15																																								
West - 86,369m³		81	08-Sep-15 A	21-Dec-15	[Gantt chart area with hatched background]																																							
PCB-02-29610 PCB - Removal of A0 Bench		14	15-Sep-15 A	02-Oct-15 A																																								
PCB-02-29620 PCB - Removal of B0 Bench		14	22-Sep-15 A	07-Oct-15 A	[Gantt chart area with hatched background]																																							
A0		62	08-Sep-15 A	15-Dec-15																																								
PCB-02-29320 PCB - Excavation for Basement Zone A1		12	08-Sep-15 A	22-Oct-15 A	[Gantt chart area with hatched background]																																							
PCB-02-29330 PCB - Excavation for Basement Zone A2		12	01-Dec-15	15-Dec-15																																								
B0		57	18-Sep-15 A	21-Dec-15	[Gantt chart area with hatched background]																																							
PCB-02-29350 PCB - Excavation for Basement Zone B1		12	18-Sep-15 A	06-Nov-15																																								
PCB-02-29360 PCB - Excavation for Basement Zone B2		12	07-Dec-15	21-Dec-15	[Gantt chart area with hatched background]																																							
Centre - 120,090m³		93	20-Aug-15 A	02-Nov-15																																								
Centre - 120,090m³		93	20-Aug-15 A	02-Nov-15	[Gantt chart area with hatched background]																																							
PCB-02-29600 PCB - Excavation for Basement Zone C2 to -1.8mPD		15	31-Aug-15 A	15-Sep-15 A																																								
PCB-02-1780 PCB - Excavation for Basement Zone C1 to -3.84mPD		35	20-Aug-15 A	23-Sep-15 A	[Gantt chart area with hatched background]																																							
PCB-02-29870 PCB - Excavation for Basement Zone C2 to -3.84mPD		20	15-Sep-15 A	02-Nov-15																																								
North - 94,824m³		14	14-Nov-15	30-Nov-15	[Gantt chart area with hatched background]																																							
East - 47,412m³		14	14-Nov-15	30-Nov-15																																								
PCB-02-31580 PCB - Excavation for Basement (23,706m³) Zone E3 East		14	14-Nov-15*	30-Nov-15	[Gantt chart area with hatched background]																																							
Pile Caps and Tie Beam Construction		93	02-Jul-15 A	22-Jan-16																																								
Basement Tie Beams & Pile Caps		93	02-Jul-15 A	22-Jan-16	[Gantt chart area with hatched background]																																							
Zone E1		54	02-Jul-15 A	20-Nov-15																																								
BS05		34	02-Jul-15 A	04-Nov-15	[Gantt chart area with hatched background]																																							
PCB-02-24400 Waterproofing to BF05 Mega Pile Cap Gridline H-G East		4	22-Jul-15 A	27-Jul-15 A																																								
PCB-02-22630 Pile Caps to BF05 and Base Slab Mega Pile Cap Gridline H-G East		12	08-Jul-15 A	28-Jul-15 A	[Gantt chart area with hatched background]																																							
PCB-02-22260 Pile Cropping to BF05 Mega Pile Cap		12	02-Jul-15 A	17-Aug-15 A																																								
PCB-02-31990 Columns above BS05		12	30-Jul-15 A	26-Sep-15 A	[Gantt chart area with hatched background]																																							
PCB-02-23040 BS05 External Wall		12	26-Sep-15 A	10-Oct-15 A																																								
PCB-02-32000 BS05 Double Slab Walls		4	22-Oct-15 A	02-Nov-15	[Gantt chart area with hatched background]																																							
PCB-02-32010 BS05 Double Slab		5	28-Oct-15 A	04-Nov-15																																								
BS04		54	04-Aug-15 A	17-Nov-15	[Gantt chart area with hatched background]																																							
PCB-02-22250 Pile Cropping to BF04		12	04-Aug-15 A	17-Aug-15 A																																								
PCB-02-22620 Pile Caps & Tie Beams to BF04		12	04-Sep-15 A	22-Sep-15 A	[Gantt chart area with hatched background]																																							
PCB-02-24390 Waterproofing to BF04		4	23-Sep-15 A	26-Sep-15 A																																								
PCB-02-22720 Backfilling to Tie Beams to BF04		4	29-Sep-15 A	09-Oct-15 A	[Gantt chart area with hatched background]																																							
PCB-02-21980 PCB - Base Slab (GL0.2 to 1.2) H-G - 204m³ Pour BS04		15	10-Oct-15 A	20-Oct-15 A																																								
PCB-02-32040 BS04 Double Slab Walls		4	22-Oct-15 A	07-Nov-15	[Gantt chart area with hatched background]																																							
PCB-02-23030 PCB - Basement Ext Walls BS04		12	26-Oct-15 A	10-Nov-15																																								
PCB-02-32050 BS04 Double Slab		4	09-Nov-15	12-Nov-15	[Gantt chart area with hatched background]																																							
PCB-02-32030 Columns above BS04		9	07-Nov-15	17-Nov-15																																								
BS06		42	03-Aug-15 A	20-Nov-15	[Gantt chart area with hatched background]																																							
PCB-02-20090 Pile Cropping to BF06		12	03-Aug-15 A	15-Aug-15 A																																								
PCB-02-22640 Pile Caps & Tie Beams to BF06		12	15-Aug-15 A	05-Sep-15 A	[Gantt chart area with hatched background]																																							
PCB-02-24410 Waterproofing to BF06		4	24-Aug-15 A	11-Sep-15 A																																								
PCB-02-25150 Backfilling to Tie Beams to BF06		4	12-Sep-15 A	05-Oct-15 A	[Gantt chart area with hatched background]																																							
PCB-02-22850 PCB - Base Slab (GL0.2 to 1.2) H-G - 337m³ Pour BS06		15	23-Sep-15 A	13-Oct-15 A																																								
PCB-02-23050 PCB - Basement Ext Walls BS06		18	19-Oct-15 A	28-Oct-15 A	[Gantt chart area with hatched background]																																							
PCB-02-32060 Columns above BS06		9	02-Nov-15	11-Nov-15																																								
PCB-02-32070 BS06 Double Slab Walls		4	12-Nov-15	16-Nov-15	[Gantt chart area with hatched background]																																							
PCB-02-32080 BS06 Double Slab		4	17-Nov-15	20-Nov-15																																								
Zone E2		68	13-Aug-15 A	21-Dec-15	[Gantt chart area with hatched background]																																							
BS11		46	13-Aug-15 A	25-Nov-15																																								
PCB-02-20270 Pile Cropping to BF11 Mega Pile Cap		12	13-Aug-15 A	22-Aug-15 A	[Gantt chart area with hatched background]																																							
PCB-02-22540 Pile Caps & Tie Beams to BF11 Mega Pile Cap Gridline E-F East		12	24-Aug-15 A	10-Sep-15 A																																								
PCB-02-24310 Waterproofing to BF11 Mega Pile Cap Gridline E-F East		4	24-Aug-15 A	18-Sep-15 A	[Gantt chart area with hatched background]																																							
PCB-02-32090 Columns above BS11		6	13-Oct-15 A	05-Nov-15																																								
PCB-02-23070 PCB - Basement Ext Walls BS11		12	03-Nov-15*	16-Nov-15	[Gantt chart area with hatched background]																																							
PCB-02-32100 BS11 Double Slab Walls		4	17-Nov-15	20-Nov-15																																								

- Actual Work
- Remaining Work
- Critical Remaining Work
- ◆ Milestone

THREE MONTHS ROLLING PROGRAMME

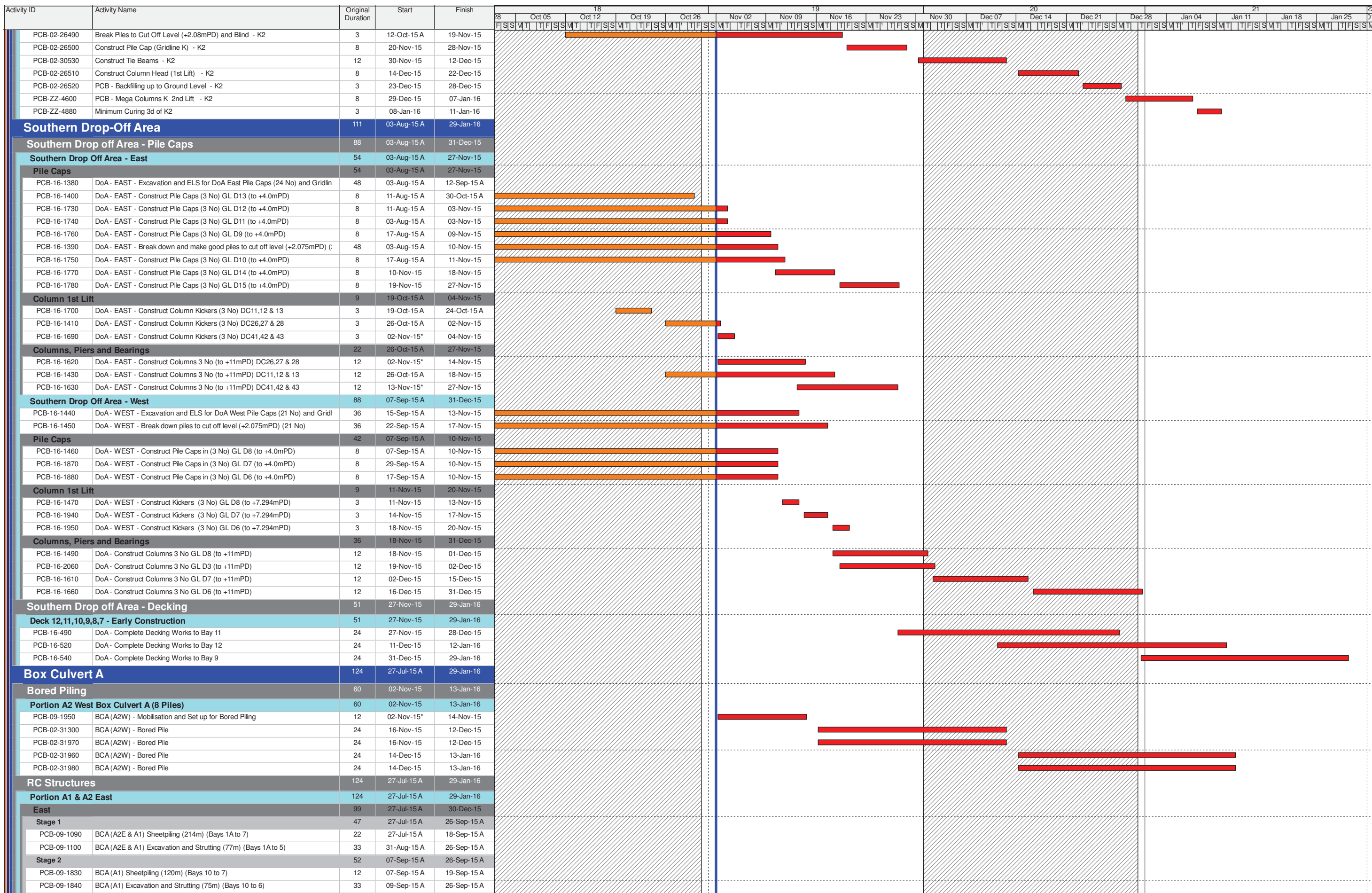
Date	Revision	Checked	Approved

Activity ID	Activity Name	Original Duration	Start	Finish	18							19							20							21						
					28	Oct 05	Oct 12	Oct 19	Oct 26	Nov 02	Nov 09	Nov 16	Nov 23	Nov 30	Dec 07	Dec 14	Dec 21	Dec 28	Jan 04	Jan 11	Jan 18	Jan 25	31									
PCB-02-22670	Pile Caps & Tie Beams to BF15	14	29-Oct-15 A	17-Nov-15	[Gantt bar]																											
PCB-02-21850	PCB - Base Slab (GL3.2 to 4.2) G-F - 538m³ Pour BS15	17	18-Nov-15	07-Dec-15	[Gantt bar]																											
PCB-02-23020	PCB - Basement Ext Walls BS15 (Rqd for BS27)	12	08-Dec-15	21-Dec-15	[Gantt bar]																											
PCB-02-32200	Columns above BS15	12	18-Dec-15	04-Jan-16	[Gantt bar]																											
BS16		54	26-Oct-15 A	22-Jan-16	[Gantt bar]																											
PCB-02-22350	Pile Cropping to BF16	6	26-Oct-15 A	30-Oct-15 A	[Gantt bar]																											
PCB-02-22600	Pile Caps & Tie Beams to BF16	14	18-Nov-15	03-Dec-15	[Gantt bar]																											
PCB-02-22860	PCB - Base Slab (GL4.2 to 5.2) F-E.5 - 565m³ Pour BS16	17	04-Dec-15	23-Dec-15	[Gantt bar]																											
PCB-02-22920	PCB - Basement Ext Walls BS16	12	24-Dec-15	09-Jan-16	[Gantt bar]																											
PCB-02-32210	Columns above BS16	14	07-Jan-16	22-Jan-16	[Gantt bar]																											
Tower Cranes		8	21-Nov-15	30-Nov-15	[Gantt bar]																											
Tower Crane No.4 - SOUTH WEST		6	21-Nov-15	27-Nov-15	[Gantt bar]																											
PCB-02-22080	PCB(A1) - Erect Tower Crane TC4	6	21-Nov-15	27-Nov-15	[Gantt bar]																											
Tower Crane No.5 - SOUTH MIDDLE		6	24-Nov-15	30-Nov-15	[Gantt bar]																											
PCB-02-22050	PCB(A1) - Erect Tower Crane TC5	6	24-Nov-15	30-Nov-15	[Gantt bar]																											
Superstructure		74	21-Nov-15	25-Feb-16	[Gantt bar]																											
Ground Floor Slabs (+5.450mPD)		74	21-Nov-15	25-Feb-16	[Gantt bar]																											
SOUTH - Gridline J-G		38	21-Nov-15	07-Jan-16	[Gantt bar]																											
Suspended Slabs (+5.450mPD)		23	21-Nov-15	17-Dec-15	[Gantt bar]																											
PCB-02-21560	Construct Ground Floor Suspended Slab Pour GS03 - 237m³	23	21-Nov-15	17-Dec-15	[Gantt bar]																											
Cure and Strip Suspended Slabs		15	18-Dec-15	07-Jan-16	[Gantt bar]																											
PCB-02-21570	Cure & Strip Ground Floor Suspended Slab Pour GS03	15	18-Dec-15	07-Jan-16	[Gantt bar]																											
MIDDLE - Gridline G-E		48	22-Dec-15	25-Feb-16	[Gantt bar]																											
Suspended Slabs (+5.450mPD)		48	22-Dec-15	25-Feb-16	[Gantt bar]																											
PCB-02-21420	Construct Ground Floor Suspended Slab Pour GS13 - 184m³	23	22-Dec-15	20-Jan-16	[Gantt bar]																											
PCB-02-21410	Construct Ground Floor Suspended Slab Pour GS12 - 215m³	23	28-Dec-15	23-Jan-16	[Gantt bar]																											
PCB-02-21390	Construct Ground Floor Suspended Slab Pour GS11 - 186m³	23	05-Jan-16	30-Jan-16	[Gantt bar]																											
PCB-02-21400	Construct Ground Floor Suspended Slab Pour GS10 - 200m³	23	23-Jan-16	25-Feb-16	[Gantt bar]																											
Columns to Mezzanine Slab (+10.250mPD)		8	21-Dec-15	31-Dec-15	[Gantt bar]																											
SOUTH - Gridline J-G		8	21-Dec-15	31-Dec-15	[Gantt bar]																											
PCB-02-20730	Construct Columns to Mezz Floor MS04	8	21-Dec-15*	31-Dec-15	[Gantt bar]																											
Gridline K		67	06-Aug-15 A	11-Jan-16	[Gantt bar]																											
Gridline K - RC Works (5 Mega Columns)		67	06-Aug-15 A	11-Jan-16	[Gantt bar]																											
K3 (to +19.0mPD)		51	19-Oct-15 A	11-Jan-16	[Gantt bar]																											
PCB-02-26530	Break Piles to Cut Off Level (+2.08mPD) and Blind - K3	3	19-Oct-15 A	19-Nov-15	[Gantt bar]																											
PCB-02-26540	Construct Pile Cap (Gridline K) - K3	8	20-Nov-15	28-Nov-15	[Gantt bar]																											
PCB-02-30490	Construct Tie Beams - K3	12	30-Nov-15	12-Dec-15	[Gantt bar]																											
PCB-02-26550	Construct Column Head (1st Lift) - K3	8	14-Dec-15	22-Dec-15	[Gantt bar]																											
PCB-02-26560	PCB - Backfilling up to Ground Level - K3	3	23-Dec-15	28-Dec-15	[Gantt bar]																											
PCB-ZZ-4620	PCB - Mega Columns K 2nd Lift - K3	8	29-Dec-15	07-Jan-16	[Gantt bar]																											
PCB-ZZ-4890	Minimum Curing 3d of K3	3	08-Jan-16	11-Jan-16	[Gantt bar]																											
K4 (to +19.0mPD)		67	06-Aug-15 A	11-Jan-16	[Gantt bar]																											
PCB-02-26570	Break Piles to Cut Off Level (+2.08mPD) and Blind - K4	3	06-Aug-15 A	10-Aug-15 A	[Gantt bar]																											
PCB-02-26580	Construct Pile Cap (Gridline K) - K4	8	11-Nov-15	19-Nov-15	[Gantt bar]																											
PCB-02-30500	Construct Tie Beams - K4	12	20-Nov-15	03-Dec-15	[Gantt bar]																											
PCB-02-26590	Construct Column Head (1st Lift) - K4	8	04-Dec-15	12-Dec-15	[Gantt bar]																											
PCB-02-26600	PCB - Backfilling up to Ground Level - K4	3	14-Dec-15	16-Dec-15	[Gantt bar]																											
PCB-ZZ-4640	PCB - Mega Columns K 2nd Lift - K4	8	17-Dec-15	28-Dec-15	[Gantt bar]																											
PCB-ZZ-4900	Minimum Curing 3d of K4	3	08-Jan-16	11-Jan-16	[Gantt bar]																											
K5 (to +19.0mPD)		59	10-Aug-15 A	11-Jan-16	[Gantt bar]																											
PCB-02-26610	Break Piles to Cut Off Level (+2.08mPD) and Blind - K5	3	10-Aug-15 A	13-Aug-15 A	[Gantt bar]																											
PCB-02-26620	Construct Pile Cap (Gridline K) - K5	8	02-Nov-15*	10-Nov-15	[Gantt bar]																											
PCB-02-30510	Construct Tie Beams - K5	12	11-Nov-15	24-Nov-15	[Gantt bar]																											
PCB-02-26630	Construct Column Head (1st Lift) - K5	8	25-Nov-15	03-Dec-15	[Gantt bar]																											
PCB-02-26640	PCB - Backfilling up to Ground Level - K5	3	04-Dec-15	07-Dec-15	[Gantt bar]																											
PCB-ZZ-4660	PCB - Mega Columns K 2nd Lift - K5	8	08-Dec-15	16-Dec-15	[Gantt bar]																											
PCB-ZZ-4910	Minimum Curing 3d of K5	3	08-Jan-16	11-Jan-16	[Gantt bar]																											
K1 (to +19.0mPD)		45	07-Nov-15	31-Dec-15	[Gantt bar]																											
PCB-02-2120	Break Piles to Cut Off Level (+2.08mPD) and Blind - K1	3	07-Nov-15	10-Nov-15	[Gantt bar]																											
PCB-02-2125	Construct Pile Cap (Gridline K) - K1	8	11-Nov-15	19-Nov-15	[Gantt bar]																											
PCB-02-30520	Construct Tie Beams - K1	12	20-Nov-15	03-Dec-15	[Gantt bar]																											
PCB-02-2185	Construct Column Head (1st Lift) - K1	8	04-Dec-15	12-Dec-15	[Gantt bar]																											
PCB-02-2190	PCB - Backfilling up to Ground Level - K1	3	14-Dec-15	16-Dec-15	[Gantt bar]																											
PCB-ZZ-4110	PCB - Mega Columns K 2nd Lift - K1	8	17-Dec-15	28-Dec-15	[Gantt bar]																											
PCB-ZZ-4870	Minimum Curing 3d of K1	3	29-Dec-15	31-Dec-15	[Gantt bar]																											
K2 (to +19.0mPD)		56	12-Oct-15 A	11-Jan-16	[Gantt bar]																											

- Actual Work
- Remaining Work
- Critical Remaining Work
- Milestone

THREE MONTHS ROLLING PROGRAMME

Date	Revision	Checked	Approved



- Actual Work
- Remaining Work
- Critical Remaining Work
- Milestone

Date	Revision	Checked	Approved

Activity ID	Activity Name	Original Duration	Start	Finish	18							19							20							21						
					28	Oct 05	Oct 12	Oct 19	Oct 26	Nov 02	Nov 09	Nov 16	Nov 23	Nov 30	Dec 07	Dec 14	Dec 21	Dec 28	Jan 04	Jan 11	Jan 18	Jan 25	31									
Bay 1																																
PCB-XX-840	Complete Blinding to Bay 1	1	25-Sep-15 A	25-Sep-15 A																												
PCB-XX-850	Complete Pile Caps to Bay 1	4	16-Sep-15 A	09-Oct-15 A																												
PCB-XX-860	Complete Bay 1 Baseslab	8	12-Oct-15 A	28-Oct-15 A																												
PCB-XX-870	Complete wall and Top Slab Bay 1	15	30-Oct-15 A	17-Nov-15																												
Bay 2																																
PCB-XX-800	Complete Blinding to Bay 2	1	26-Sep-15 A	26-Sep-15 A																												
PCB-XX-810	Complete Pile Caps to Bay 2	3	12-Oct-15 A	14-Oct-15 A																												
PCB-XX-820	Complete Bay 2 Baseslab	9	03-Nov-15*	12-Nov-15																												
PCB-XX-830	Complete wall and Top Slab Bay 2	15	20-Nov-15	07-Dec-15																												
Bay 3																																
PCB-XX-790	Complete Blinding to Bay 3	1	29-Sep-15 A	29-Sep-15 A																												
PCB-XX-750	Complete Pile Caps to Bay 3	4	14-Oct-15 A	17-Oct-15 A																												
PCB-XX-760	Complete Bay 3 Baseslab	8	22-Oct-15 A	02-Nov-15																												
PCB-XX-770	Complete wall and Top Slab Bay 3	15	03-Nov-15*	19-Nov-15																												
Bay 4																																
PCB-XX-780	Complete Blinding to Bay 4	2	15-Oct-15 A	19-Oct-15 A																												
PCB-XX-720	Complete Pile Caps to Bay 4	4	21-Oct-15 A	26-Oct-15 A																												
PCB-XX-730	Complete Bay 4 Baseslab	8	03-Nov-15*	11-Nov-15																												
PCB-XX-740	Complete wall and Top Slab Bay 4	15	20-Nov-15	07-Dec-15																												
Bay 5																																
PCB-XX-0610	Complete Blinding to Bay 5	1	19-Oct-15 A	22-Oct-15 A																												
PCB-XX-0620	Complete Pile Caps to Bay 5	3	27-Oct-15 A	03-Nov-15																												
PCB-XX-0630	Complete Bay 5 Baseslab	7	04-Nov-15*	12-Nov-15																												
PCB-XX-0640	Complete wall and Top Slab Bay 5	15	12-Nov-15*	30-Nov-15																												
Bay 6																																
PCB-XX-1040	Complete Blinding to Bay 6	3	21-Oct-15 A	24-Oct-15 A																												
PCB-XX-1050	Complete Pile Caps to Bay 6	4	02-Nov-15	05-Nov-15																												
PCB-XX-1060	Complete Bay 6 Baseslab	7	11-Nov-15*	19-Nov-15																												
PCB-XX-1070	Complete wall and Top Slab Bay 6	15	30-Nov-15*	17-Dec-15																												
Bay 7																																
PCB-XX-1000	Complete Blinding to Bay 7	7	28-Oct-15 A	31-Oct-15 A																												
PCB-XX-1010	Complete Pile Caps to Bay 7	4	02-Nov-15	05-Nov-15																												
PCB-XX-1020	Complete Bay 7 Baseslab	9	06-Nov-15*	16-Nov-15																												
PCB-XX-1030	Complete wall and Top Slab Bay 7	15	17-Nov-15*	03-Dec-15																												
Bay 8																																
PCB-XX-960	Complete Blinding to Bay 8	4	02-Nov-15*	06-Nov-15																												
PCB-XX-970	Complete Pile Caps to Bay 8	3	06-Nov-15	10-Nov-15																												
PCB-XX-980	Complete Bay 8 Baseslab	7	21-Nov-15*	28-Nov-15																												
PCB-XX-990	Complete wall and Top Slab Bay 8	15	08-Dec-15	24-Dec-15																												
Bay 9																																
PCB-XX-920	Complete Blinding to Bay 9	4	02-Nov-15*	05-Nov-15																												
PCB-XX-930	Complete Pile Caps to Bay 9	5	06-Nov-15	11-Nov-15																												
PCB-XX-940	Complete Bay 9 Baseslab	8	12-Nov-15*	20-Nov-15																												
PCB-XX-950	Complete wall and Top Slab Bay 9	17	21-Nov-15*	10-Dec-15																												
Bay 10																																
PCB-XX-880	Complete Blinding to Bay 10	2	02-Nov-15*	03-Nov-15																												
PCB-XX-890	Complete Pile Caps to Bay 10	3	04-Nov-15*	06-Nov-15																												
PCB-XX-900	Complete Bay 10 Baseslab	7	23-Nov-15*	01-Dec-15																												
PCB-XX-910	Complete wall and Top Slab Bay 10	15	11-Dec-15*	30-Dec-15																												
West																																
Stage 3																																
PCB-09-1600	BCA (A1) Sheetpiling (300m) (Bays 11 to 20)	30	07-Sep-15 A	23-Sep-15 A																												
PCB-09-1620	BCA (A1) Excavation (150m) (Bays 11 to 20)	30	19-Sep-15 A	10-Nov-15																												
PCB-09-1170	BCA (A1) Backfilling to Ground Level (150m) (Bays 11 to 20)	55	24-Nov-15*	29-Jan-16																												
Bay 11																																
PCB-XX-1080	Complete Blinding to Bay 11	3	05-Nov-15*	07-Nov-15																												
PCB-XX-1090	Complete Pile Caps to Bay 11	4	07-Nov-15*	12-Nov-15																												
PCB-XX-1100	Complete Bay 11 Baseslab	8	13-Nov-15	23-Nov-15																												
PCB-XX-1110	Complete wall and Top Slab Bay 11	15	23-Nov-15*	10-Dec-15																												
Bay 12																																
PCB-XX-1120	Complete Blinding to Bay 12	1	09-Nov-15	10-Nov-15*																												
PCB-XX-1130	Complete Pile Caps to Bay 12	3	11-Nov-15	14-Nov-15																												
PCB-XX-1140	Complete Bay 12 Baseslab	8	28-Nov-15*	07-Dec-15																												
PCB-XX-1150	Complete wall and Top Slab Bay 12	15	08-Dec-15*	24-Dec-15																												
Bay 13																																
PCB-XX-1160	Complete Blinding to Bay 13	1	11-Nov-15	12-Nov-15*																												

- Actual Work
- Remaining Work
- Critical Remaining Work
- Milestone

THREE MONTHS ROLLING PROGRAMME

Date	Revision	Checked	Approved

Activity ID	Activity Name	Original Duration	Start	Finish	18							19							20							21							22																		
					28	Oct 05	Oct 12	Oct 19	Oct 26	Nov 02	Nov 09	Nov 16	Nov 23	Nov 30	Dec 07	Dec 14	Dec 21	Dec 28	Jan 04	Jan 11	Jan 18	Jan 25	31																												
PCB-9A-470	CUE - Apply Waterproofing to Bay 6	3	23-Feb-16	25-Feb-16	F	S	S	M	T	T	F	S	S	M	T	T	F	S	S	M	T	T	F	S	S	M	T	T	F	S	S	M	T	T	F	S	S	M	T	T	F	S	S	M	T	T	F	S	S	M	T
PCB-9A-480	CUE - Apply Waterproofing to Bay 5	7	23-Feb-16	01-Mar-16																																															
Seawater Pump House		167	06-Oct-15 A	06-May-16																																															
PCB-13A-0500	Commencement of Seawater Pumpstation	0	08-Nov-15*																																																
Piling		167	06-Oct-15 A	06-May-16																																															
PCB-13A-740	SWP - Additional Pre-drilling works	24	06-Oct-15 A	07-Nov-15																																															
PCB-13A-110	SWP - Prebored socket H-piles (1 to 10) x 2 rigs	20	09-Nov-15	01-Dec-15																																															
PCB-13A-500	SWP - Prebored socket H-piles (11 to 20) x 2 rigs	20	02-Dec-15	24-Dec-15																																															
PCB-13A-510	SWP - Prebored socket H-piles (21 to 30) x 2 rigs	20	28-Dec-15	20-Jan-16																																															
PCB-13A-520	SWP - Prebored socket H-piles (31 to 40) x 2 rigs	20	21-Jan-16	19-Feb-16																																															
PCB-13A-720	SWP - Prebored socket H-piles (41 to 50) x 2 rigs	20	20-Feb-16	14-Mar-16																																															
PCB-13A-730	SWP - Prebored socket H-piles (51 to 66) x 2 rigs	32	15-Mar-16	21-Apr-16																																															
PCB-13A-120	SWP - Socketed H-Piles Load Testing	12	22-Apr-16	06-May-16																																															

- Actual Work
- Remaining Work
- Critical Remaining Work
- Milestone

THREE MONTHS ROLLING PROGRAMME

Date	Revision	Checked	Approved