

- Actual Work
- Remaining Work
- Critical Remaining Work
- ◆ Milestone

Three Month Rolling Programme

HKMZB HKBCF - Passenger Clearance Building

Date	Revision	Checked	Approved
01-May-16	Three Month Rolling Programme	JW/SGJ	

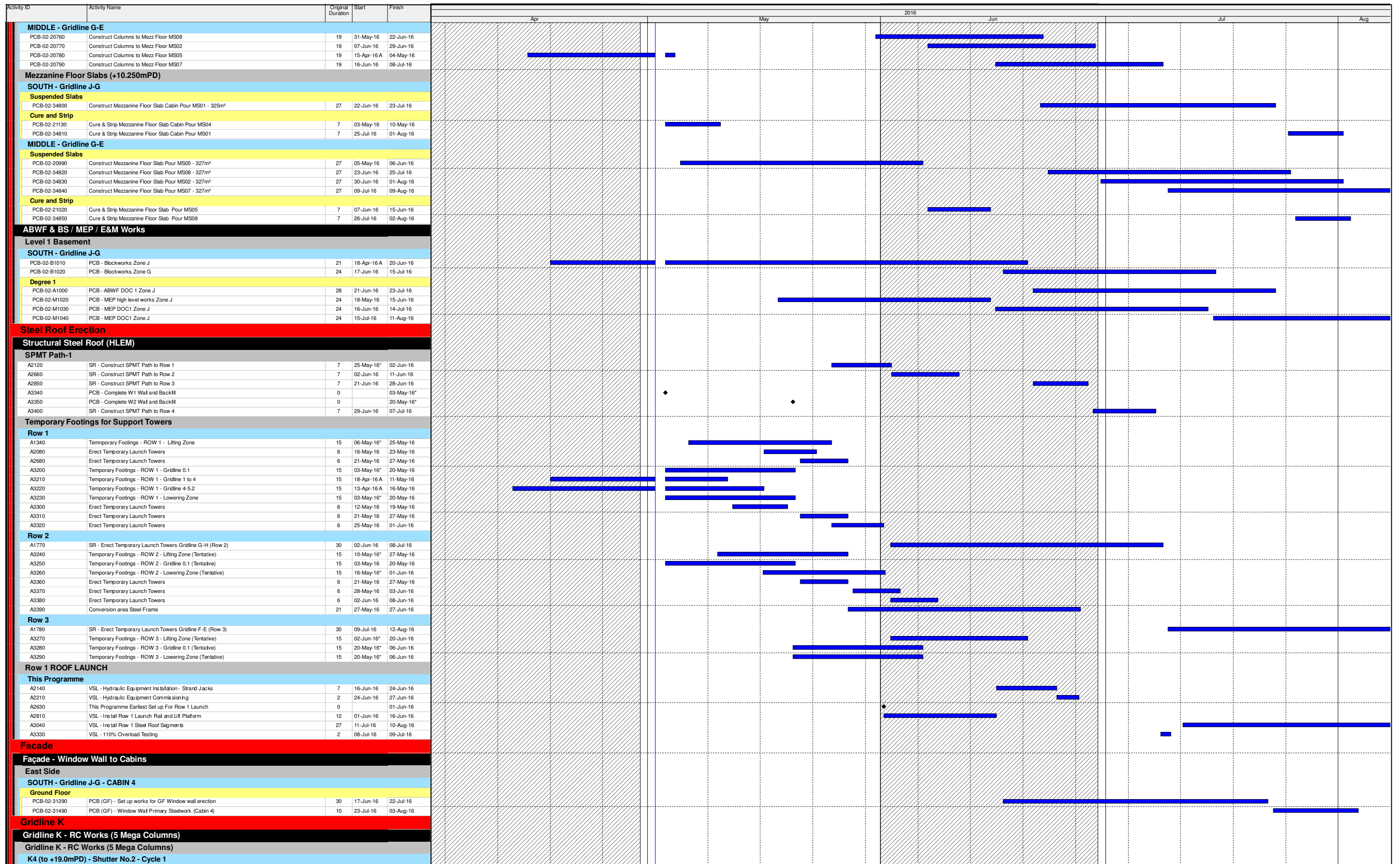
Activity ID	Activity Name	Original Duration	Start	Finish	Apr	May	2016	Jun	Jul	Aug
A1790	PCB - Basement Ext Walls to BS27b - 2 pairs (Extended Working Hours)	10	16-May-16	25-May-16						
A1840	PCB - Basement Ext Walls to BS27a - 2 pairs (Extended Working Hours)	10	13-May-16	22-May-16						
A2110	PCB - Basement Ext Walls to BS25 - 2 pairs (Extended Working Hours)	10	26-May-16	04-Jun-16						
Waterproofing Trench Walls										
A1720	PCB - Waterproofing to BS26 Walls	3	02-May-16	04-May-16						
A1910	PCB - Waterproofing to BS27b Walls	3	26-May-16	28-May-16						
A2000	PCB - Waterproofing to BS27a Walls	3	23-May-16	25-May-16						
A2220	PCB - Waterproofing to BS25 Walls	3	05-Jun-16	07-Jun-16						
Backfilling behind Service Trough Walls										
A1850	PCB - Backfilling to Ground Level at Basement Ext Walls BS26	4	05-May-16	08-May-16						
A2060	PCB - Backfilling to Ground Level at Basement Ext Walls BS27b	4	29-May-16	01-Jun-16						
A2100	PCB - Backfilling to Ground Level at Basement Ext Walls BS27a	4	26-May-16	29-May-16						
A2360	PCB - Backfilling to Ground Level at Basement Ext Walls BS25	4	08-Jun-16	11-Jun-16						
Excavate for Pile Caps and Beams										
A2070	PCB - Excavate Pile caps and Beams GF21 - South East Corner	5	09-May-16	13-May-16						
A2230	PCB - Excavate Pile caps and Beams GF20a Middle South	5	02-Jun-16	06-Jun-16						
A2290	PCB - Excavate Pile caps and Beams GF20b - South West Corner	5	17-Jun-16	21-Jun-16						
A2300	PCB - Excavate Pile caps and Beams GF18 - North West Corner	5	12-Jun-16	16-Jun-16						
A2430	PCB - Excavate Pile caps and Beams GF19b Middle North	5	27-Apr-16 A	03-May-16						
Pile Cropping										
A2150	Pile Cropping to GF21 - South East Corner	6	11-May-16	16-May-16						
A2340	Pile Cropping to GF20a Middle South	6	07-Jun-16	12-Jun-16						
A2380	Pile Cropping to GF18 - North West Corner	6	17-Jun-16	22-Jun-16						
A2390	Pile Cropping to GF20b - South West Corner	6	22-Jun-16	27-Jun-16						
A2530	Pile Cropping to GF19b Middle North	6	04-May-16	09-May-16						
Pile Capping										
A2400	Pile Caps and Tie Beams to GF21 - South East Corner (Extended Working Hours)	10	12-May-16	21-May-16						
A2410	Pile Caps and Tie Beams to GF19a - North East Corner (Extended Working Hours)	10	27-Apr-16 A	09-May-16						
A2480	Pile Caps and Tie Beams to GF20a (Extended Working Hours) Middle South	10	13-Jun-16	22-Jun-16						
A2510	Pile Caps and Tie Beams to GF18 - North West Corner (Extended Working Hours)	10	23-Jun-16	02-Jul-16						
A2520	Pile Caps and Tie Beams to GF20b - South West Corner (Extended Working Hours)	10	28-Jun-16	07-Jul-16						
A2690	Pile Caps and Tie Beams to GF19b (Extended Working Hours) Middle North	10	10-May-16	19-May-16						
Water Proofing										
A2440	Waterproofing Pile Caps and Tie Beams to GF21 - South East Corner	4	22-May-16	25-May-16						
A2450	Waterproofing Pile Caps and Tie Beams to GF19a - North East Corner	4	10-May-16	13-May-16						
A2610	Waterproofing Pile Caps and Tie Beams to GF20a Middle South	4	23-Jun-16	26-Jun-16						
A2640	Waterproofing Pile Caps and Tie Beams to GF18 - North West Corner	4	03-Jul-16	06-Jul-16						
A2650	Waterproofing Pile Caps and Tie Beams to GF20b - South West Corner	4	08-Jul-16	11-Jul-16						
A2740	Waterproofing Pile Caps and Tie Beams to GF19b Middle North	4	20-May-16	23-May-16						
Backfilling to Top Level of Ground Beams (+5.0mPD Generally)										
A2580	Backfilling to Tie Beams to GF21 - South East Corner	4	26-May-16	29-May-16						
A2590	Backfilling to Tie Beams to GF19a - North East Corner	4	14-May-16	17-May-16						
A2670	Backfilling to Tie Beams to GF20a Middle South	4	27-Jun-16	30-Jun-16						
A2700	Backfilling to Tie Beams to GF18 - North West Corner	4	07-Jul-16	10-Jul-16						
A2710	Backfilling to Tie Beams to GF20b - South West Corner	4	12-Jul-16	15-Jul-16						
A2760	Backfilling to Tie Beams to GF19b Middle North	4	24-May-16	27-May-16						
Ground Slabs (+5.450mPD)										
A2720	Construct Ground Floor Base Slab GS21 - South East Corner	14	30-May-16	12-Jun-16						
A2730	Construct Ground Floor Base Slab GS19a - North East Corner	12	18-May-16	29-May-16*						
A2750	Construct Ground Floor Base Slab GS20a Middle South	15	01-Jul-16	15-Jul-16						
A2770	Construct Ground Floor Base Slab GS18 - North West Corner	12	11-Jul-16	22-Jul-16*						
A2780	Construct Ground Floor Base Slab GS20b - South West Corner	14	16-Jul-16	29-Jul-16*						
A2820	Construct Ground Floor Base Slab GS19b Middle North	15	28-May-16	11-Jun-16						
Ground Floor Slabs (+5.450mPD)										
SOUTH - Gridline J-G										
PCB-AB-A0020	Earliest Commencement of ABWF/MEP in Basement SOUTH WEST	0	17-Jun-16							
Suspended Slabs (+5.450mPD)										
PCB-02-21540	Construct Ground Floor Suspended Slab Pour GS02a	22	03-May-16	28-May-16						
PCB-02-21550	Construct Ground Floor Suspended Slab Pour GS02b	22	03-May-16	28-May-16						
Cure and Strip Suspended Slabs										
PCB-02-21590	Cure & Strip Ground Floor Suspended Slab Pour GS01	15	30-May-16	16-Jun-16						
PCB-02-21600	Cure & Strip Ground Floor Suspended Slab Pour GS02	15	30-May-16	16-Jun-16						
MIDDLE - Gridline G-E										
PCB-AB-A0030	Earliest Commencement of ABWF/MEP in Basement MIDDLE EAST	0	18-Jun-16							
PCB-AB-A0040	Earliest Commencement of ABWF/MEP in Basement MIDDLE WEST	0	05-Jul-16							
Suspended Slabs (+5.450mPD)										
PCB-02-21350	Construct Ground Floor Suspended Slab Pour GS04a	23	05-May-16*	01-Jun-16						
PCB-02-21360	Construct Ground Floor Suspended Slab Pour GS06	23	10-May-16*	06-Jun-16						
PCB-02-21370	Construct Ground Floor Suspended Slab Pour GS09	23	03-May-16*	30-May-16						
PCB-02-21380	Construct Ground Floor Suspended Slab Pour GS08a	18	18-May-16*	07-Jun-16						
PCB-02-21400	Construct Ground Floor Suspended Slab Pour GS10	23	03-May-16*	30-May-16						
PCB-02-21410	Construct Ground Floor Suspended Slab Pour GS12a	18	15-Mar-16 A	10-May-16						
PCB-02-21420	Construct Ground Floor Suspended Slab Pour GS11	23	15-Feb-16 A	06-May-16						
PCB-02-34770	Construct Ground Floor Suspended Slab Pour GS12b	18	28-Mar-16 A	13-May-16						
PCB-02-34780	Construct Ground Floor Suspended Slab Pour GS08b	23	19-May-16*	15-Jun-16						
PCB-02-34790	Construct Ground Floor Suspended Slab Pour GS04b	18	03-May-16*	24-May-16						
Cure and Strip Suspended Slabs										
PCB-02-32640	Cure & Strip Ground Floor Suspended Slab Pour GS07	15	03-May-16	20-May-16						
PCB-02-32650	Cure & Strip Ground Floor Suspended Slab Pour GS13	15	03-May-16	20-May-16						
PCB-02-32660	Cure & Strip Ground Floor Suspended Slab Pour GS12	15	16-May-16	01-Jun-16						
PCB-02-32670	Cure & Strip Ground Floor Suspended Slab Pour GS11	15	07-May-16	25-May-16						
PCB-02-32680	Cure & Strip Ground Floor Suspended Slab Pour GS10	15	31-May-16	17-Jun-16						
PCB-02-34720	Cure & Strip Ground Floor Suspended Slab Pour GS04	15	02-Jun-16	20-Jun-16						
PCB-02-34730	Cure & Strip Ground Floor Suspended Slab Pour GS06	15	07-Jun-16	24-Jun-16						
PCB-02-34740	Cure & Strip Ground Floor Suspended Slab Pour GS09	15	31-May-16	17-Jun-16						
PCB-02-34750	Cure & Strip Ground Floor Suspended Slab Pour GS08	15	16-Jun-16	04-Jul-16						
Columns to Mezzanine Slab (+10.250mPD)										
SOUTH - Gridline J-G										
PCB-02-20720	Construct Columns to Mezz Floor MS01	19	30-May-16	21-Jun-16						

- Actual Work
- Remaining Work
- Critical Remaining Work
- ◆ Milestone

Three Month Rolling Programme

HKMZB HKBCF - Passenger Clearance Building

Date	Revision	Checked	Approved
01-May-16	Three Month Rolling Programme	JW/SGJ	



- Actual Work
- Remaining Work
- Critical Remaining Work
- Milestone

Three Month Rolling Programme

HKMZB HKBCF - Passenger Clearance Building

Date	Revision	Checked	Approved
01-May-16	Three Month Rolling Programme	JW/SGJ	

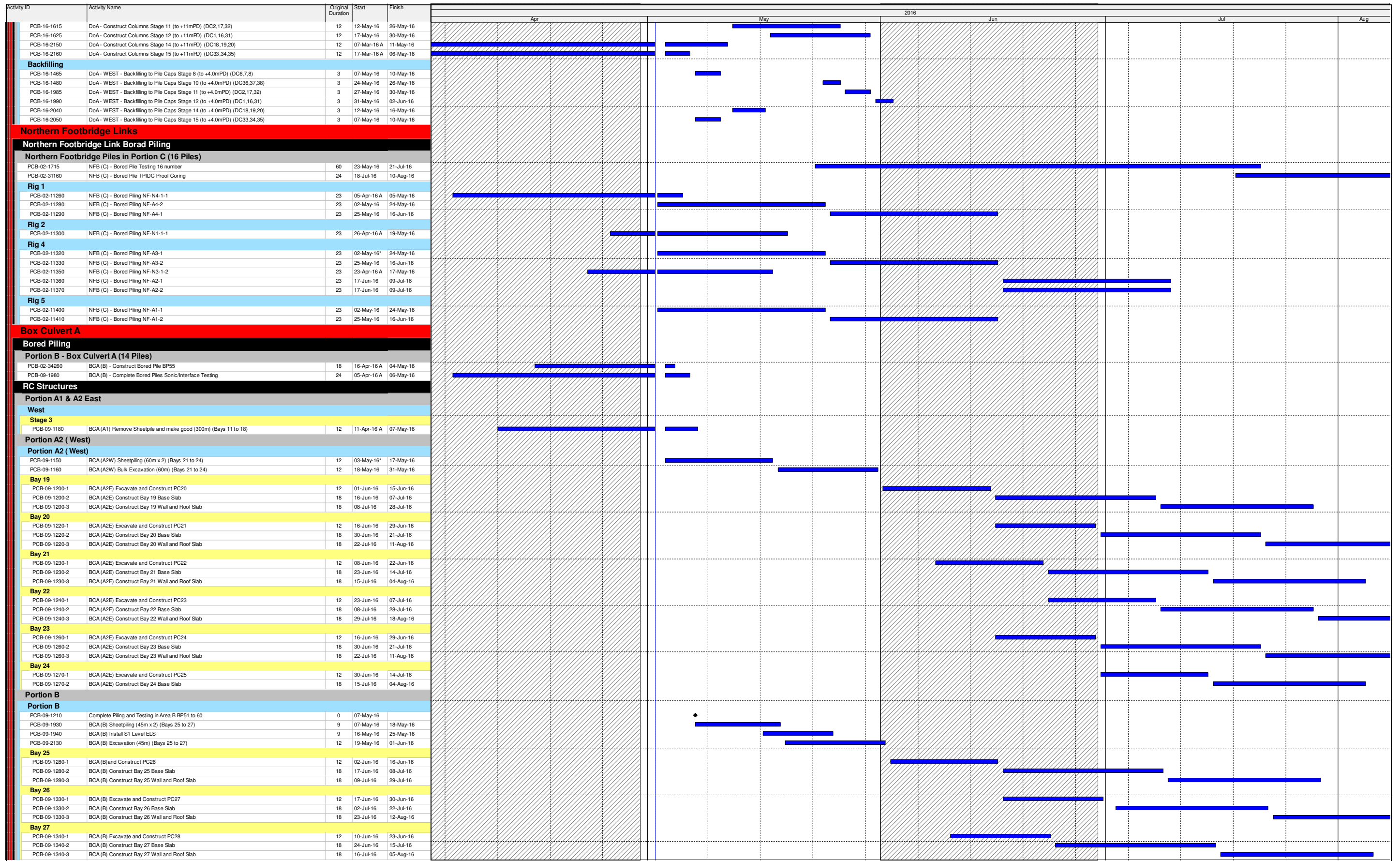


- Actual Work
- Remaining Work
- Critical Remaining Work
- Milestone

Three Month Rolling Programme

HKMZB HKBCF - Passenger Clearance Building

Date	Revision	Checked	Approved
01-May-16	Three Month Rolling Programme	JW/SGJ	

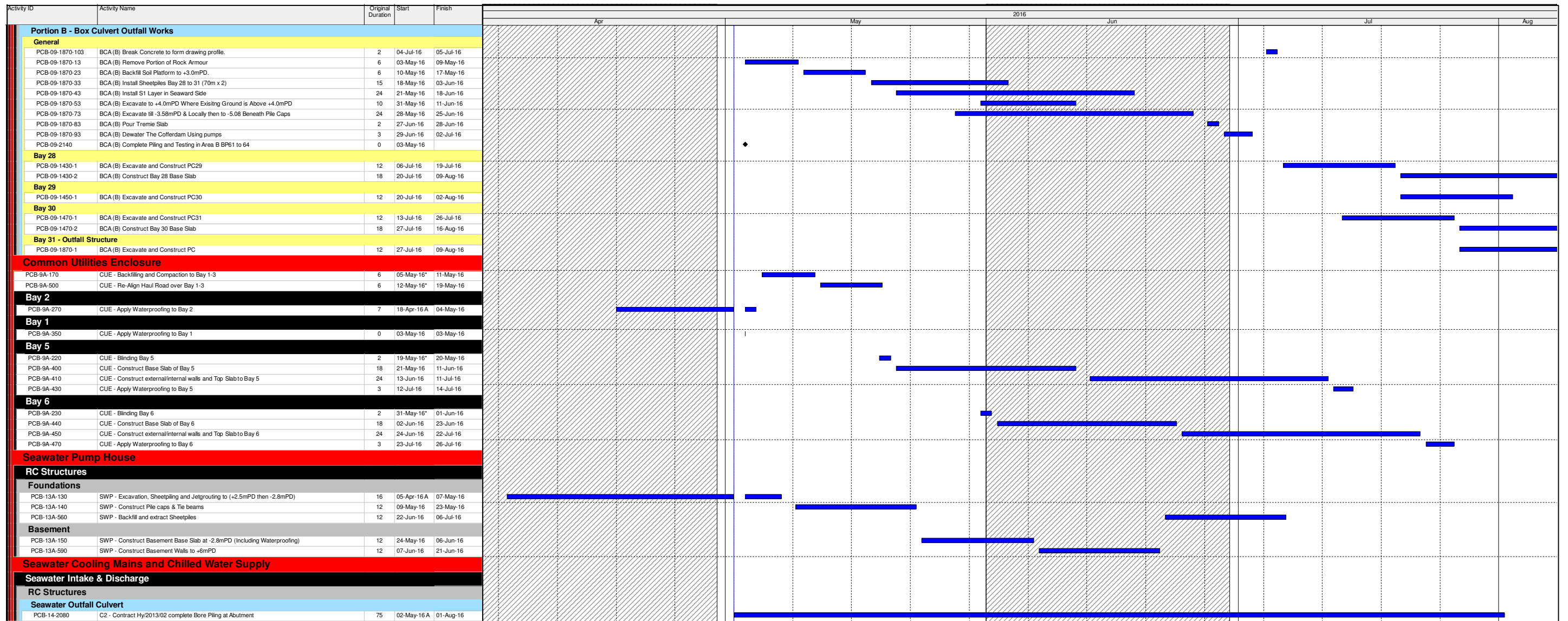


- Actual Work
- Remaining Work
- Critical Remaining Work
- Milestone

Three Month Rolling Programme

HKMZB HKBCF - Passenger Clearance Building

Date	Revision	Checked	Approved
01-May-16	Three Month Rolling Programme	JW/SGJ	



- Actual Work
- Remaining Work
- Critical Remaining Work
- Milestone

Three Month Rolling Programme

HKMZB HKBCF - Passenger Clearance Building

Date	Revision	Checked	Approved
01-May-16	Three Month Rolling Programme	JW/SGJ	