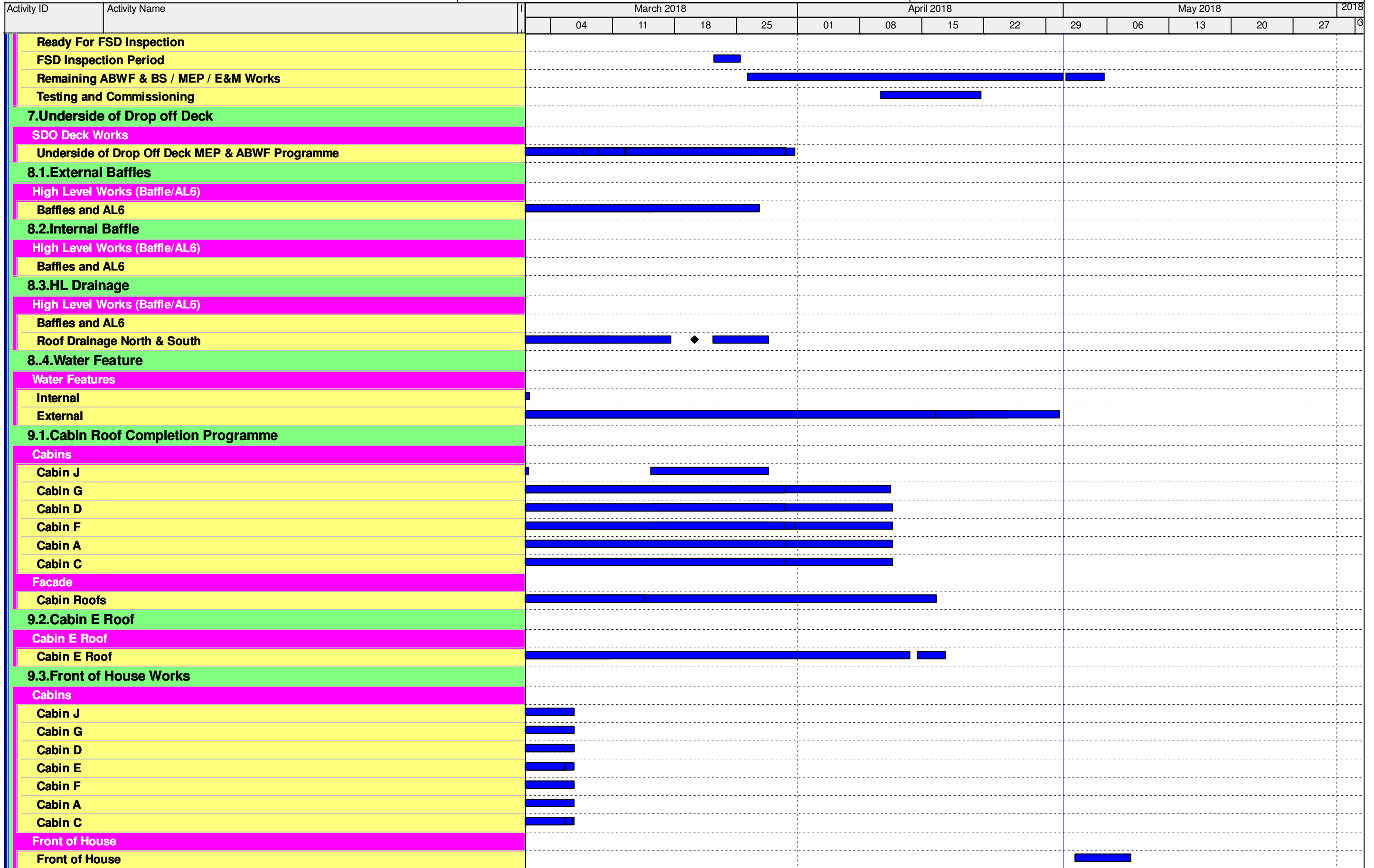


Activity ID	Activity Name	March 2018				April 2018				May 2018				2018	
		04	11	18	25	01	08	15	22	29	06	13	20	27	31
Target Programme to Completion Update DD 1st May															
0.Fire Service Inspections															
Fire Service Inspections															
Fire Service Inspections															
FSD1000	Complete FS defects from 1st Inspection														
FSD1010	FS taskforce inspections														
FSD1020	Additional works - AVAS systems														
FSD1030	Additional works - BSMT AHU Room Detectors														
FSD1035	Additional works - Probe detetors (AHU Plantroom)														
FSD1040	Final FS rehearsal tests/make ready for FS re inspection	████████████████████													
FSD1050	Request FS re-inspecton (excluding EVA + SFH)														
FSD1055	FS Review Period														
FSD1060	FS reinspection(s) (excluding EVA+SFH)	██													
FSD1071	FS reinspection for EVA+SFH	████████													
FSD1072	EVA & SFH completion including FS Inspection	◆													
FSD1072a	FS Review					████████████████				████████					
FSD1080	FS Issue fire certification	◆													
FSD1090	TPIDC/AP/RSE Inspection	████████████████████													
FSD1100	OP Obtained	◆													
FSD1110	Complete o/s items during Maintenance Period														
1.External Works															
External Staircases		██													
External Works															
PCB - East		██													
PCB - West		██													
PCB - North (Under Row 5)		██													
PCB - Site entrance area and northern end (North West)		██													
Guard Booths		██													
2.External Toilets															
Public Toilets															
RC Structures		█													
ABWF Works		██													
MEP		██													
Roof		██													
3.Covered Walkway															
Covered Walkway															
South		██													
North		██													
4.Vertical Circulation															
Vertical Circulation															
Eastern Vertical Circulation		██													
Western Vertical Circulation		██													
5.Smoke Vent and Delivery Hatch															
Smoke Vent and Delivery Hatch															
6.Refuse Collection Point															
Refuse Collection Building															

█ Remaining Level of Effort
 █ Remaining Work
 ◆ Milestone
 █ Actual Work
 █ Critical Remaining Work



■ Remaining Level of Effort
 ■ Remaining Work
 ◆ Milestone
 ■ Actual Work
 ■ Critical Remaining Work

Activity ID	Activity Name	March 2018				April 2018				May 2018				2018	
		04	11	18	25	01	08	15	22	29	06	13	20	27	31
Kiosks & Booths		[Gantt bars for Kiosks & Booths]													
Red & Green Channels		[Gantt bars for Red & Green Channels]													
A26132	Red & Green Channel - Building Steel / Glazing	[Gantt bar]													
A26133	Red & Green Channel - Critical Room - ABWF	[Gantt bar]													
A26134	Red & Green Channel - Other Room - MEP	[Gantt bar]													
A26135	Red & Green Channel - Other Room - ABWF	[Gantt bar]													
A26136	Red & Green Channel - Critical Room - MEP	[Gantt bar]													
A26137	Red & Green Channel - Building Steel / Glazing	[Gantt bar]													
A26137a	Red & Green Channel - Hanging TV frames	[Gantt bar]													
A26138	Red & Green Channel - Critical Room - ABWF	[Gantt bar]													
A26139	Red & Green Channel - Critical Room - MEP	[Gantt bar]													
A26140	Red & Green Channel - Other Room - MEP	[Gantt bar]													
A26141	Red & Green Channel - Other Room - ABWF	[Gantt bar]													
10. Balustrade		[Gantt bars for Balustrade]													
Balustrade		[Gantt bars for Balustrade]													
Internal		[Gantt bars for Internal]													
Footbridges		[Gantt bars for Footbridges]													
11. Roof Works		[Gantt bars for Roof Works]													
High Level Works (Baffle/AL6)		[Gantt bars for High Level Works]													
Roof Cladding & Glazing		[Gantt bars for Roof Cladding & Glazing]													
Southern Drop Off Deck		[Gantt bars for Southern Drop Off Deck]													
SDO Deck Works		[Gantt bars for SDO Deck Works]													
EVA and Stage 1		[Gantt bar]													
Stage 2 (DOD North West)		[Gantt bar]													
Stage 3 (DOD South West)		[Gantt bar]													
Stage 4 (DOD East)		[Gantt bar]													
Movement Joint		[Gantt bar]													
Facade Programme		[Gantt bars for Facade Programme]													
Facade		[Gantt bars for Facade]													
Genset Building		[Gantt bar]													
Sea Water Pump House		[Gantt bar]													
Testing and Commissioning		[Gantt bars for Testing and Commissioning]													
Electrical Systems		[Gantt bars for Electrical Systems]													
CLP Tx Power & LV Sub-mains Power-On		[Gantt bars for CLP Tx Power & LV Sub-mains Power-On]													
EL1000	C3 handover for Remaining External Cable Duct Routes	[Gantt bar]													
EL1010	Complete Balance of Submains Cabling to External Areas incl C2 & C3 areas	[Gantt bar]													
EL1020	Progressively Energise Outgoing Circuits from LV switchboards - External Areas incl C2&C3	[Gantt bar]													
EL1030	LV Switchboards - Final Interfacing T&C with SCADA system	[Gantt bar]													
Electrical Sub-mains Installation & Final Distribution		[Gantt bars for Electrical Sub-mains Installation & Final Distribution]													
EL1040	Complete Installation CBS Lighting Control for Emergency FS Lighting (26 no. sets):	[Gantt bar]													
EL1050	Final T&C: CBS Lighting Control fo FS Related Lighting Installations	[Gantt bar]													
EL1060	SCADA Interfacing with CBS and Final T&C	[Gantt bar]													
Lighting and Small Power		[Gantt bars for Lighting and Small Power]													
EL1070	Non-FS: Lighting & Small Power Final Circuit Testing / Progressive Switch Lights On	[Gantt bar]													
EL1080	Non-FS : Lighting & Small Power - Final Lighting Control T&C and Lux Level Checks	[Gantt bar]													
EL1090	Non-FS: Lighting & Small Power Final Circuit Testing / Progressive Switch Lights On	[Gantt bar]													
EL1100	Non-FS : Lighting & Small Power - Final Lighting Control T&C and Lux Level Checks	[Gantt bar]													

█ Remaining Level of Effort
 █ Remaining Work
 ◆ Milestone
 █ Actual Work
 █ Critical Remaining Work

Activity ID	Activity Name	March 2018				April 2018				May 2018				2018	
		04	11	18	25	01	08	15	22	29	06	13	20	27	31
EL1110	Non-FS: Lighting & Small Power Final Circuit Testing / Progressive Switch Lights On	[Actual Work]													
EL1120	Non-FS : Lighting & Small Power - Final Lighting Control T&C and Lux Level Checks														
EL1130	Non-FS: Lighting & Small Power Final Circuit Testing / Progressive Switch Lights On	[Actual Work]													
EL1140	Non-FS : Lighting & Small Power - Final Lighting Control T&C and Lux Level Checks														
UPS Systems - Final T&C:															
EL1150	Full Load Test and Functional T&C														
EL1160	Interfacing with SCADA														
Emergency Generator & Associated Diesel Fuel Supply systems															
EL1170	Fire Service Generators (Zone C & G) Final T&C and Interfacing with SCADA														
EL1180	Fire Service Generators (Zone A, D & J) Final T&C and Interfacing with SCADA														
EL1190	Emergency Generators (3no at EGB) Final T&C and Interfacing with SCADA														
Other "Misc" Electrical Systems															
EL1200	Earthing System - Final T&C														
EL1210	Lightning Protection System - Final T&C														
EL1220	SCADA System Interfacing with LV Sw Board and PQM Energy Mgt system														
MVAC Systems															
Chiller Plant & Associated Chilled & Heating Water Distribution															
MV1000	Stage 1 T&C for Chilled Water Circuit to enable Conditioned Wild Air														
MV1010	Progressive Energise Chiller Plant MCC's														
MV1020	Chilled Water - Primary & Secondary Water Circuit Flushing & Chemical Cleaning														
MV1020a	Chilled Water - Primary & Secondary Water Circuit Flushing & Chemical Cleaning - remaining														
MV1030	Chiller Primary Water Circuit By-pass Loops Re-instatement following flushing														
MV1040	Chiller Secondary Water Circuit By-pass Loops at AHU's and Hx Re-instatement														
MV1050	Chilled Water Pumps - Functional and Performance Tests														
MV1050a	Chilled Water Pumps - Functional and Performance Tests - Remaining														
MV1060	Chilled Water System - Ancilliary Equipment T&C														
MV1060a	Chilled Water System - Ancilliary Equipment T&C - Remaining														
MV1070	Chiller 1 & 2 Initial start-up checks (with Chiller supplier)														
MV1080	Chiller 3 to 8 Initial start-up checks (with Chiller supplier)														
MV1090	Light Chiller 1 to 3 Initial start-up checks (with Chiller supplier)														
MV1100	Condensor Seawater Supply Available														
MV1110	Target Chillers 1 & 2 Chillers Available and Chilled Water ON (In Manual Mode)														
MV1120	Target ALL Chillers Available (In Manual Mode)														
MV1130	Chilled Water - Secondary Water Circuit Flushing & Chemical Cleaning - CUE														
MV1140	Chiller Secondary Water Circuit Remove By-pass Loops - CUE														
MV1620	Chilled Water Riser Branches local flushing														
MV1630	CHW Riser chemical treatment and cleaning														
MV1640	Complete balance CW,HW pwk - Flushing , Chem Clean and Final Balance														
Chilled Water and Sea Water System SCADA T&C															
MV1150	Progressive Power On to SCADA PLC Panels														
MV1160	SWPH & Chiller Plant - End to End SCADA Wiring - Point Testing from PLC to Field Equipm														
MV1170	SWPH & Ciller Plant - SCADA Functional Testing														
MV1180	Chiller Plant & SWP - SCADA Chiller Start-up/Shut Down Programme Checking														
MV1190	Chiller & SWP Plant - SCADA Integrated Equipment Tests														
MV1200	Chiller & SWP Plant - SCADA Operation of System in Full Auto Mode														
MV1210	Chiller & SWP Plant - SCADA "Fine Tune" System Settings / Operation														
Heating Water Distribution - T&C															
MV1220	Heating Water Pumps - T&C / Pump Alignment														
MV1230	Primary & Secondary Heating Water Pipe Flushing and Chemical Cleaning														
MV1240	Stage 1 Water Balancing - Main Pipework Basement level and up to G/F Riser														

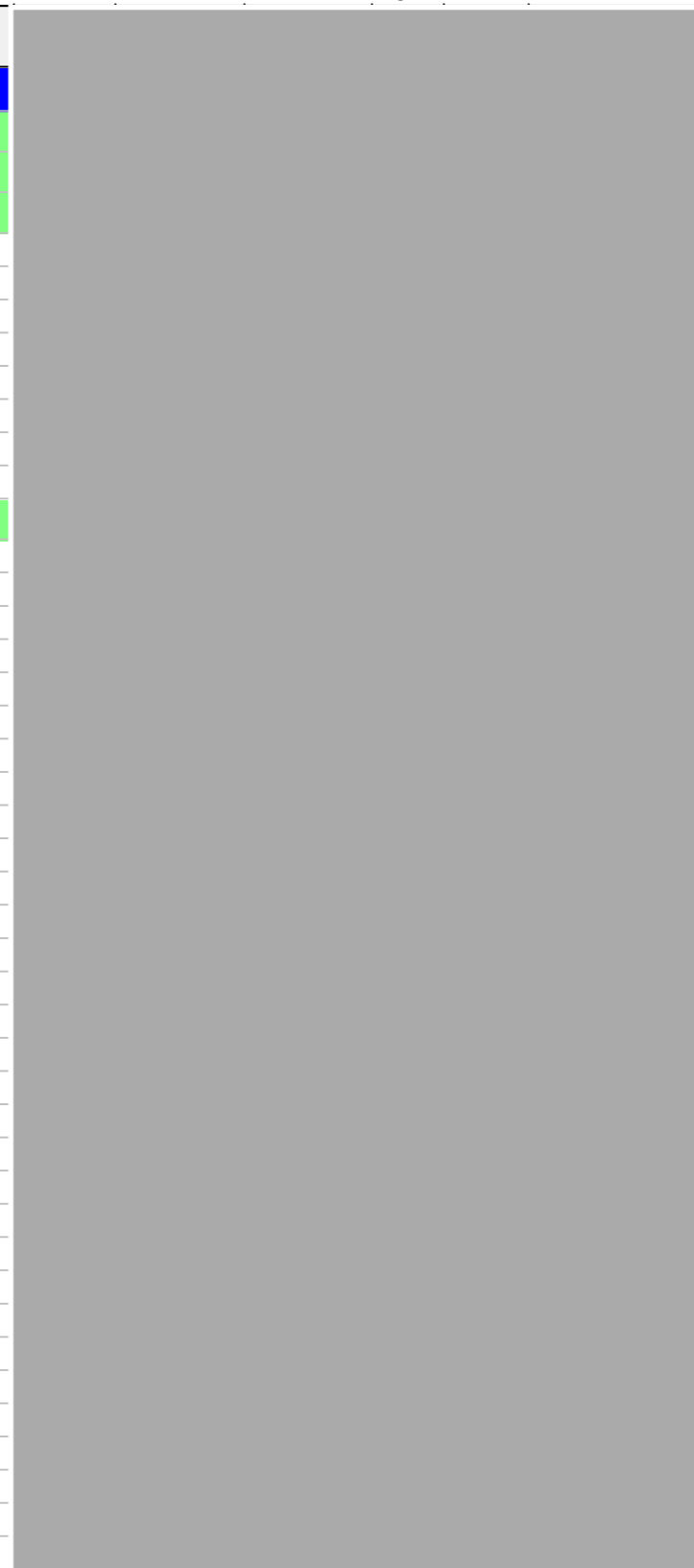
█ Remaining Level of Effort
 █ Remaining Work
 ◆ Milestone
█ Actual Work
█ Critical Remaining Work

Three Month Rolling Programme HKMZB HKBCF - Passenger Clearance Building		1.03 Aecom Output										09-May-18 09:07			
Activity ID	Activity Name	March 2018				April 2018				May 2018				2018	
		04	11	18	25	01	08	15	22	29	06	13	20	27	31
MV1250	Complete balance HTG Pwk - Flushing, Chem. Clean and Final Balance	[Actual Work]										[Remaining Work]			
Heat Pumps - Initial start-up SAT checks & SCADA T&C															
MV1260	Heat Pump 1 to 4 Initial start-up checks (with Chiller supplier)	[Actual Work]													
MV1270	Progressive Power On to SCADA PLC Panels	[Actual Work]													
MV1280	Heat Pump - End to End SCADA Wiring - Point Testing from PLC to Field Eq.	[Actual Work]										[Remaining Work]			
MV1290	Heat Pump System - SCADA Functional Testing	[Actual Work]													
MV1300	Heat Pump - SCADA Heat Pump Start-up/Shut Down Programme Checking	[Actual Work]													
MV1310	Heat Pump system- SCADA Integrated Equipment Tests	[Actual Work]													
MV1320	Heat Pump - SCADA Operation of System in Full Auto Mode	[Actual Work]										[Remaining Work]			
AHU, Fans & Associated Distribution (including VAV, FCU, etc) B/F															
MV1340	FCU Installations at LV Switch Rooms and Elect/ELV Rooms	[Actual Work]													
MV1350	Misc Ventilation Systems (various areas)	[Actual Work]													
All Cabins (G/F to Roof) - incls AHU+Duct Riser+ VAV(if applicable)+ Final Air Grille															
MV1360	BOH Cabin AHU - Chilled water Available - Initial AHU Start-up T&C	[Actual Work]													
MV1370	BOH Cabin AHU & Main Distribution Ducts - Initial System Air Balance for conditioned "Wild A	[Actual Work]													
MV1380	Target ALL Cabin AHU's Operational - providing conditioned "Wild Air" to Cabins	[Actual Work]													
MV1390	Cabins VAV Box -Progressive Power On for VAV Box & SCADA network	[Actual Work]													
MV1400	BOH Cabin AHU - Complete Final Airside Balancing for Main Duct Runs and at VAV boxes	[Actual Work]										[Remaining Work]			
MV1410	BOH Cabins AHU & VAV -Final SCADA Interfacing & Control for Air-side Equipment	[Actual Work]										[Remaining Work]			
MV1420	BOH Cabin AHU & VAV - Put SCADA in Auto / "Fine Tune" System Settings / Operation	[Actual Work]										[Remaining Work]			
MV1430	BOH cabins : FCU Installations at BOH Elect/ELV Rooms	[Actual Work]													
MV1440	CRAC System for Critical Rooms (Split Refrig. & Waterside Units) incl SCADA Interfacing	[Actual Work]													
MV1450	BOH Cabins : Misc Ventilation Systems (various areas)	[Actual Work]													
G/F FOH Concourse - incls AHU+Duct Riser+ Drum Louvre /Final Air Grille															
MV1460	FOH AHU - Chilled Water Available - Initial AHU Start-up T&C	[Actual Work]													
MV1470	FOH AHU & Main Distribution Ducts - Initial System Air Balance for "Wild Air"	[Actual Work]													
MV1480	Target 50% of FOH AHU's Operational - providing conditioned "Wild Air" to FOH	[Actual Work]													
MV1490	Target 100% of FOH AHU's Operational - providing conditioned "Wild Air" to FOH	[Actual Work]													
MV1500	FOH AHU, Distribution Duct & Drum Louvre - Final Airside Balancing for Main Duct Runs	[Actual Work]										[Remaining Work]			
MV1510	FOH Areas: AHU - Final SCADA Interfacing & Control for Air-side Equipment	[Actual Work]										[Remaining Work]			
MV1520	FOH Areas - Put AHU SCADA in Auto / "Fine Tune" System Settings / Operation	[Actual Work]										[Remaining Work]			
MV1530	R&G Channel, Kiosks and Retail: MVAC Installations T&C	[Actual Work]										[Remaining Work]			
1/F FOH Concourse - incls AHU+Duct Riser+ VAV(if applicable)+ Final Air Grille															
MV1540	FOH AHU - Chilled Water Available - Initial AHU Start-up T&C	[Actual Work]										[Remaining Work]			
MV1550	FOH AHU & Main Distribution Ducts - Initial System Air Balance for "Wild Air"	[Actual Work]										[Remaining Work]			
MV1560	Target 50% of FOH AHU's Operational - providing conditioned "Wild Air" to FOH	[Actual Work]										[Remaining Work]			
MV1570	Target 100% of FOH AHU's Operational - providing conditioned "Wild Air" to FOH	[Actual Work]										[Remaining Work]			
MV1580	FOH AHU, Distribution Duct & Drum Louvre - Final Airside Balancing for Main Duct Runs	[Actual Work]										[Remaining Work]			
MV1590	FOH Areas: AHU - Final SCADA Interfacing & Control for Air-side Equipment	[Actual Work]										[Remaining Work]			
MV1600	FOH Areas - Put AHU SCADA in Auto / "Fine Tune" System Settings / Operation	[Actual Work]										[Remaining Work]			
MV1610	R&G Channel, Kiosks and Retail: MVAC Installations T&C	[Actual Work]										[Remaining Work]			

Remark: The landscape work for Contract No. HY/2013/01 was commenced on 1 March 2018. The tentative completion date of related landscape work is end of June 2018.

█ Remaining Level of Effort
█ Remaining Work
█ Actual Work
█ Critical Remaining Work
◆ Milestone

Activity ID	Activity Name
Hong Kong-Zhuhai_Macao Bridge Hong Kong Boundary Crossing F	
Key Dates	
Interface Activities	
Site and Facility Inspection	
JS1200	Pre Site and Facility Inspection by Contractor at Location 4 - Deg2
JS1210	Joint Site and Facility Inspection with Interface Contractor at Location 4 - Deg2
JS1620	Pre Site and Facility Inspection by Contractor at Location 14 - Deg2
JS1630	Joint Site and Facility Inspection with Interface Contractor at Location 14 - Deg2
JS1760	Pre Site and Facility Inspection by Contractor at Location 18 - Deg1
JS1770	Joint Site and Facility Inspection with Interface Contractor at Location 18 - Deg1
JS1780	Pre Site and Facility Inspection by Contractor at Location 18 - Deg2
JS1790	Joint Site and Facility Inspection with Interface Contractor at Location 18 - Deg2
Access Dates	
AD1000	Location 1(PCB (001) Basement)-Deg1 (270d)
AD1010	Location 1(PCB (001) Basement)-Deg2 (380d)
AD1020	Location 1(PCB (001) ELV Room (Grid Line E3))-Deg1 (270d)
AD1030	Location 1(PCB (001) ELV Room (Grid Line E3))-Deg2 (380d)
AD1040	Location 2(PCB (001) First Floor Main Server Room)-Deg1 (330d)
AD1050	Location 2(PCB (001) First Floor Main Server Room)-Deg2 (380d)
AD1060	Location 2(PCB (001) First Floor Main Server Room) - For Server Installation - Deg2 (380d)
AD1070	Location 2(PCB (001) Ground Floor ELV Room (Grid Line E3)) - Deg1 (330d)
AD1080	Location 2(PCB (001) Ground Floor DOH Port Health Control Room (Grid Line BD5)) - Deg1 (330d)
AD1090	Location 2(PCB (001) Ground Floor DOH Port Health Control Room (Grid Line BD5)) - Deg2 (380d)
AD1130	Location 3(Inbd Cargo Exam Bldg (037) Platform Control Room)-Deg2 (500d)
AD1150	Location 3(Inbd Cargo Exam Bldg (037) Inspector Offices 128,129,130,131,128,129,14)
AD1170	Location 3a(Inbd Cargo Exam Bldg (037) ROCARS Room)-Deg2 (480d)
AD1190	Location 3a(Inbd Cargo Exam Bldg (037) Main Server Room)-Deg2 (480d)
AD1200	Location 3a(Inbd Cargo Exam Bldg (037) Main Server Room) - For Server installation - Deg2 (480d)
AD1220	Location 4(Outbd Cargo Exam Bldg (023))-Deg2 (680d)
AD1240	Location 4a(Outbd Cargo Exam Bldg (023))-Deg2 (630d)
AD1270	Location 6(Common Utility Enclosure & Staff Subway)-Deg1 (400d)
AD1290	Location 7(Common Utility Enclosure & Staff Subway)-Deg1 (270d)
AD1300	Location 8(Inbd Private Car Annex (025))-Deg1 (430d)
AD1310	Location 8(Inbd Private Car Annex (025))-Deg2 (580d)
AD1320	Location 8(Inbd Private Car Annex (025) Canopy)-Deg1 (430d)
AD1330	Location 8(Inbd Private Car Annex (025) Canopy)-Deg2 (580d)
AD1340	Location 9(Outbd Private Car Annex (032))-Deg1 (520d)
AD1350	Location 9(Outbd Private Car Annex (032))-Deg2 (660d)
AD1360	Location 9(Outbd Private Car Annex (032) Canopy)-Deg1 (520d)
AD1370	Location 9(Outbd Private Car Annex (032) Canopy)-Deg2 (660d)
AD1501	Location 12(Inbd Private Car Kiosks(027))-Deg1 (400d) Phase 2
AD1510	Location 12(Inbd Private Car Kiosks(027))-Deg2 (480d) Phase 1
AD1511	Location 12(Inbd Private Car Kiosks(027))-Deg2 (480d) Phase 2
AD1521	Location 12(Inbd Private Car Kiosks(027) Canopy)-Deg1 (400d) Phase 2



2015			2016				2017				2018				2019		
Q2	Q3	Q4	Q1	Q2	Q3	Q4	Q1	Q2	Q3	Q4	Q1	Q2	Q3	Q4	Q1	Q2	Q3
22-Oct-17, Hong Kong-Zhuhai_Macao Bridge																	
23-Jun-17, Site and Facility Inspection:																	
Pre Site and Facility Inspection by Contractor at Location 4 - Deg2																	
Joint Site and Facility Inspection with Interface Contractor at Location 4 - Deg2																	
Pre Site and Facility Inspection by Contractor at Location 14 - Deg2																	
Joint Site and Facility Inspection with Interface Contractor at Location 14 - Deg2																	
Pre Site and Facility Inspection by Contractor at Location 18 - Deg1																	
Joint Site and Facility Inspection with Interface Contractor at Location 18 - Deg1																	
Pre Site and Facility Inspection by Contractor at Location 18 - Deg2																	
Joint Site and Facility Inspection with Interface Contractor at Location 18 - Deg2																	
24-Aug-17, Access Dates																	
Location 1(PCB (001) Basement)-Deg1 (270d), 31-May-17																	
Location 1(PCB (001) Basement)-Deg2 (380d), 15-Jun-17																	
Location 1(PCB (001) ELV Room (Grid Line E3))-Deg1 (270d), 31-May-17																	
Location 1(PCB (001) ELV Room (Grid Line E3))-Deg2 (380d), 15-Jun-17																	
Location 2(PCB (001) First Floor Main Server Room)-Deg1 (330d), 31-May-17																	
Location 2(PCB (001) First Floor Main Server Room)-Deg2 (380d), 15-Jun-17																	
Location 2(PCB (001) First Floor Main Server Room) - For Server Installation - Deg2 (380d), 15-Jun-17																	
Location 2(PCB (001) Ground Floor ELV Room (Grid Line E3)) - Deg1 (330d), 31-May-17																	
Location 2(PCB (001) Ground Floor DOH Port Health Control Room (Grid Line BD5)) - Deg1 (330d), 31-May-17																	
Location 2(PCB (001) Ground Floor DOH Port Health Control Room (Grid Line BD5)) - Deg2 (380d), 15-Jun-17																	
Location 3(Inbd Cargo Exam Bldg (037) Platform Control Room)-Deg2 (500d), 15-Jun-17																	
Location 3(Inbd Cargo Exam Bldg (037) Inspector Offices 128,129,130,131,128,129,14), 15-Jun-17																	
Location 3a(Inbd Cargo Exam Bldg (037) ROCARS Room)-Deg2 (480d), 15-Jun-17																	
Location 3a(Inbd Cargo Exam Bldg (037) Main Server Room)-Deg2 (480d), 15-Jun-17																	
Location 3a(Inbd Cargo Exam Bldg (037) Main Server Room) - For Server installation - Deg2 (480d), 15-Jun-17																	
Location 4(Outbd Cargo Exam Bldg (023))-Deg2 (680d), 15-Jun-17																	
Location 4a(Outbd Cargo Exam Bldg (023))-Deg2 (630d), 15-Jun-17																	
Location 6(Common Utility Enclosure & Staff Subway)-Deg1 (400d), 15-Jun-17																	
Location 7(Common Utility Enclosure & Staff Subway)-Deg1 (270d), 15-Jun-17																	
Location 8(Inbd Private Car Annex (025))-Deg1 (430d), 15-Jun-17																	
Location 8(Inbd Private Car Annex (025))-Deg2 (580d), 15-Jun-17																	
Location 8(Inbd Private Car Annex (025) Canopy)-Deg1 (430d), 15-Jun-17																	
Location 8(Inbd Private Car Annex (025) Canopy)-Deg2 (580d), 15-Jun-17																	
Location 9(Outbd Private Car Annex (032))-Deg1 (520d), 15-Jun-17																	
Location 9(Outbd Private Car Annex (032))-Deg2 (660d), 15-Jun-17																	
Location 9(Outbd Private Car Annex (032) Canopy)-Deg1 (520d), 15-Jun-17																	
Location 9(Outbd Private Car Annex (032) Canopy)-Deg2 (660d), 15-Jun-17																	
Location 12(Inbd Private Car Kiosks(027))-Deg1 (400d) Phase 2, 15-Jun-17																	
Location 12(Inbd Private Car Kiosks(027))-Deg2 (480d) Phase 1, 15-Jun-17																	
Location 12(Inbd Private Car Kiosks(027))-Deg2 (480d) Phase 2, 15-Jun-17																	
Location 12(Inbd Private Car Kiosks(027) Canopy)-Deg1 (400d) Phase 2, 15-Jun-17																	

Programme No.: HZMB-DWP
Data Date: 14-Aug-15

- Actual Level of Effort
- Primary Baseline
- Actual Work
- Remaining Work
- Critical Remaining Work
- Baseline Milestone
- Milestone

Hong Kong-Zhuhai-Macao Bridge
Hong Kong Boundary Crossing
Facilities - Automatic Vehicle
Clearance Support System (AVCSS)

Date	Revision	Checked	Approved
14-Nov-16	Rev.: 0	WC	LC
10-Mar-17	Rev.: 1.0a	WC	LC
5-May-17	Rev.: 1.0b	WC	LC

Activity ID	Activity Name	2015												2016				2017				2018				2019		
		Q2	Q3	Q4	Q1	Q2	Q3	Q4	Q1	Q2	Q3	Q4	Q1	Q2	Q3	Q4	Q1	Q2	Q3	Q1	Q2	Q3						
AD1530	Location 12(Inbd Private Car Kiosks(027) Canopy)-Deg2 (480d) Phase 1																											
AD1531	Location 12(Inbd Private Car Kiosks(027) Canopy)-Deg2 (480d) Phase 2																											
AD1540	Location 12(Inbd GV Kiosks (028))-Deg1 (400d) Phase 1																											
AD1541	Location 12(Inbd GV Kiosks (028))-Deg1 (400d) Phase 2																											
AD1550	Location 12(Inbd GV Kiosks (028))-Deg2 (480d) Phase 1																											
AD1551	Location 12(Inbd GV Kiosks (028))-Deg2 (480d) Phase 2																											
AD1560	Location 12(Inbd GV Kiosks (028) Canopy)-Deg1 (400d) Phase 1																											
AD1561	Location 12(Inbd GV Kiosks (028) Canopy)-Deg1 (400d) Phase 2																											
AD1570	Location 12(Inbd GV Kiosks (028) Canopy)-Deg2 (480d) Phase 1																											
AD1571	Location 12(Inbd GV Kiosks (028) Canopy)-Deg2 (480d) Phase 2																											
AD1580	Location 12(Outbd GV Kiosks (029))-Deg1 (400d) Phase 1																											
AD1581	Location 12(Outbd GV Kiosks (029))-Deg1 (400d) Phase 2																											
AD1590	Location 12(Outbd GV Kiosks (029))-Deg2 (480d) Phase 1																											
AD1591	Location 12(Outbd GV Kiosks (029))-Deg2 (480d) Phase 2																											
AD1600	Location 12(Outbd GV Kiosks (029) Canopy)-Deg1 (400d) Phase 1																											
AD1601	Location 12(Outbd GV Kiosks (029) Canopy)-Deg1 (400d) Phase 2																											
AD1610	Location 12(Outbd GV Kiosks (029) Canopy)-Deg2 (480d) Phase 1																											
AD1611	Location 12(Outbd GV Kiosks (029) Canopy)-Deg2 (480d) Phase 2																											
AD1620	Location 13(Outbd Private Car Kiosks (030))-Deg1 (480d) Phase 1																											
AD1630	Location 13(Outbd Private Car Kiosks (030))-Deg2 (550d) Phase 1																											
AD1640	Location 13(Outbd Private Car Kiosks (030) Canopy)-Deg1 (480d) Phase 1																											
AD1650	Location 13(Outbd Private Car Kiosks (030) Canopy)-Deg2 (550d) Phase 1																											
AD1660	Location 14(Future-Outbd/Inbd Private Car Kiosks)-Deg1 (610d)																											
AD1670	Location 14(Future-Outbd/Inbd Private Car Kiosks)-Deg2 (680d)																											
AD1700	Location 16(Outbd Traffic Control Kiosk (101))-Deg1 (400d)																											
AD1710	Location 16(Outbd Traffic Control Kiosk (101))-Deg2 (480d)																											
AD1740	Location 18(Outbd Private Car Exam Bldg(024))-Deg1 (-)																											
AD1750	Location 18(Outbd Private Car Exam Bldg(024))-Deg2 (670d)																											
AD1780	(by C03) Underground Ducting (UUD1.1) between CUE and Inbd Cargo Exam Bldg (0																											
AD1790	(by C03) (UUD1.2) between Inbd Cargo Exam Bldg South (037[S]) and DOH Cargo C																											
AD1800	(by C03) (UUD2) between Inbd Cargo Exam Bldg North (037[N]) and Inbd Vehicle Cle																											
AD1810	(by C03) (UUD9.1) btw Inbd Cargo Exam Bldg S.(037[S]) & Inbd PC Exam Bldg(033) &																											
AD1820	(by C03) (UUD9.3) between Inbd Private Car Exam Bldg (033) and Inbd Vehicle Clear																											
AD1830	(by C03) (UUD9.2) between Inbd Private Car Exam Bldg (033) and Inbd Vehicle Clear																											
AD1840	(by C03) Underground Ducting (UUD3.1) between CUE to Outbd Cargo Exam Bldg (0																											
AD1850	(by C03) (UUD3.2) btw Outbd Car Exam Bldg (023) and Outbd PC Exam Bldg (024) ai																											
AD1860	(byC03) (UUD4.1) between Outbd Private Car Exam Bldg (024) and Outbd Vehicle Cle																											
AD1870	(byC03) (UUD5) between Outbd Car Exam Bldg South (023[S]) and Outbd Vehicle Cle																											
AD1880	(by C03) Underground Ducting (UUD8) between CUE and Outbd PCA (032)																											
AD1910	(by C03) Inbound Vehicle Clearance Plaza																											
AD1920	(by C03) Outbound Vehicle Clearance Plaza																											
<ul style="list-style-type: none"> Interfaces Provisions Mobilization Provisions WA4 Site Erection & Servicing 																												

Programme No.: HZMB-DWP Data Date: 14-Aug-15	<ul style="list-style-type: none"> Actual Level of Effort Primary Baseline Actual Work Remaining Work Critical Remaining Work Baseline Milestone Milestone 	summary	Hong Kong-Zhuhai-Macao Bridge Hong Kong Boundary Crossing Facilities - Automatic Vehicle Clearance Support System (AVCSS)		<table border="1" style="width: 100%;"> <thead> <tr> <th>Date</th> <th>Revision</th> <th>Checked</th> <th>Approved</th> </tr> </thead> <tbody> <tr> <td>14-Nov-16</td> <td>Rev.: 0</td> <td>WC</td> <td>LC</td> </tr> <tr> <td>10-Mar-17</td> <td>Rev.: 1.0a</td> <td>WC</td> <td>LC</td> </tr> <tr> <td>5-May-17</td> <td>Rev.: 1.0b</td> <td>WC</td> <td>LC</td> </tr> </tbody> </table>	Date	Revision	Checked	Approved	14-Nov-16	Rev.: 0	WC	LC	10-Mar-17	Rev.: 1.0a	WC	LC	5-May-17	Rev.: 1.0b	WC	LC
Date	Revision	Checked	Approved																		
14-Nov-16	Rev.: 0	WC	LC																		
10-Mar-17	Rev.: 1.0a	WC	LC																		
5-May-17	Rev.: 1.0b	WC	LC																		

Activity ID	Activity Name	2015		2016				2017				2018				2019				
		Q2	Q3	Q4	Q1	Q2	Q3	Q4	Q1	Q2	Q3	Q4	Q1	Q2	Q3	Q4	Q1	Q2	Q3	
EM1700	L12(028)(5nos P1) - AIOP Installation (5 nos)																			
EM1720	L12(028)(5nos P1) - Loop installation (25 nos)																			
Outbd Goods Vehicle Kiosks(029) - 5 nos (Phase 1)																				
EM1740	L12(029)(5nos P1) - Cable Containment in Kiosks																			
EM1760	L12(029)(5nos P1) - Cable Laying and termination																			
EM1780	L12(029)(5nos P1) - Cable Splicing and Testing and Labeling																			
EM1800	L12(029)(5nos P1) - AVCSS/MOM Kiosk Equipment Installation (5 nos)																			
EM1821	L12(029)(5nos P1) - XDB installation (5 nos)																			
EM1822	L12(029)(5nos P1) - ODB installation (4 nos)																			
EM1823	L12(029)(5nos P1) - ODB installation (1 nos)																			
EM1840	L12(029)(5nos P1) - AIOP Installation (5 nos)																			
Location 13(Outbd Private Car Kiosks (030)) - 9 nos (Phase 1)																				
EM2520	L13(030)(9nos P1) - Cable Containment in Kiosks																			
EM2540	L13(030)(9nos P1) - Cable Laying and termination																			
EM2560	L13(030)(9nos P1) - Cable Splicing and Testing and Labeling																			
EM2580	L13(030)(9nos P1) - AVCSS/MOM Kiosk Equipment Installation (9 nos)																			
EM2601	L13(030)(9nos P1) - XDB installation (9 nos)																			
EM2602	L13(030)(9nos P1) - ODB installation (7 nos)																			
Location 14(Future-Outbd/Inbd Private Car Kiosks) - 6+6 nos																				
EM1440	L14 - Cable Laying and termination at ELV Room in CUE																			
Location 15(Inbd Traffic Control Kiosk (100))																				
Location 16(Outbd Traffic Control Kiosk (101))																				
EM2760	L16(101) - Cable Laying and termination																			
EM2780	L16(101) - Cable Splicing and Testing and Labeling																			
EM2800	L16(101) - AVCSS SYSCON and SURCON Installation																			
EM2820	L16(101) - VTS WS and 55" LCD Installation																			
Location 17(Inbd Private Car Exam Bldg(033) Operational Office)																				
Location 18 (Outbd Private Car Exam Bldg(024) Operational Office)																				
EM2940	L18(024) - Cable Laying and termination																			
EM2960	L18(024) - Cable Splicing and Testing and Labeling																			
EM2980	L18(024) - AVCSS SURCON and 55" LCD Installation																			
EM3000	L18(024) - SURCON Tuning																			
Location 19 (DOH Cargo Clearance Bldg(043))																				
EM1360	L19(043) - Cable Laying and termination																			
EM1380	L19(043) - Cable Splicing and Testing and Labeling																			
EM1400	L19(043) - PA and Intercom Installation																			
EM1420	L19(043) - PA and Intercom Tuning																			
Inbd Vehicle Clearance Plaza - 8 nos VID, 7 nos VTS, 4 nos TLS																				
EM3020	Inbound VID cabling from pillar box to VID field equipment																			
EM3040	Inbound VTS cabling from pillar box to VTS field equipment																			
EM3060	Inbound TLS cabling from pillar box to TLS field equipment																			
EM3080	Inbound VID field equipment installation (8 VID)																			
EM3100	Inbound VTS field equipment installation (4 RFID + 3 Cameras)																			
EM3120	Inbound TLS field equipment installation (4 TLS)																			
EM3140	Inbound VID and VTS and TLS field equipment tuning																			

Programme No.: HZMB-DWP Data Date: 14-Aug-15		summary	Hong Kong-Zhuhai-Macao Bridge Hong Kong Boundary Crossing Facilities - Automatic Vehicle Clearance Support System (AVCSS)	Date	Revision	Checked	Approved
				14-Nov-16	Rev.: 0	WC	LC
				10-Mar-17	Rev.: 1.0a	WC	LC
				5-May-17	Rev.: 1.0b	WC	LC

Activity ID	Activity Name	2015																		2016																		2017																		2018																		2019																																			
		Q2			Q3			Q4			Q1			Q2			Q3			Q4			Q1			Q2			Q3			Q4			Q1			Q2			Q3			Q4																																																																	
Outbd Vehicle Clearance Plaza - 8 nos VID, 6 nos VTS, 4 nos TLS																																																								02-Aug-17, Outbd Vehicle Clearance Plaza - 8 nos V																																																					
EM3160	Outbound VID cabling from pillar box to VID field equipment																																																							Outbound VID cabling from pillar box to VID field equipr																																																					
EM3180	Outbound VTS cabling from pillar box to VTS field equipment																																																							Outbound VTS cabling from pillar box to VTS field equi																																																					
EM3200	Outbound TLS cabling from pillar box to TLS field equipment																																																							Outbound TLS cabling from pillar box to TLS field equ																																																					
EM3220	Outbound VID field equipment installation (8 VID)																																																							Outbound VID field equipment installation (8 VID)																																																					
EM3240	Outbound VTS field equipment installation (3 RFID + 3 Cameras)																																																							Outbound VTS field equipment installation (3 RFID +																																																					
EM3260	Outbound TLS field equipment installation (4 TLS)																																																							Outbound TLS field equipment installation (4 TLS)																																																					
EM3280	Outbound VID and VTS and TLS field equipment tuning																																																							Outbound VID and VTS and TLS field equipment tur																																																					
Underground Ducting (UUD1.1) between CUE and Inbd Cargo Exam Bldg (037)																																																								13-Jun-17, Underground Ducting (UUD1.1) between C																																																					
UD1000	(UUD1.1 [CUE-037]) - Cable laying and termination																																																							(UUD1.1 [CUE-037]) - Cable laying and termination;																																																					
(UUD1.2) between Inbd Cargo Exam Bldg South (037[S]) and DOH Cargo Clearance Bldg (037[S])																																																								27-Jun-17, (UUD1.2) between Inbd Cargo Exam Bldg																																																					
UD1060	(UUD1.2 [037[S]-043]) - Cable laying and termination																																																							(UUD1.2 [037[S]-043]) - Cable laying and termination																																																					
Underground Ducting (UUD6) between CUE and Shuttle Bus Kiosk (006) and Inbd Private Car Exam Bldg (033)																																																																																																													
(UUD9.1) btw IB Cargo Exam Bldg South(037[S]) & IB PC Exam Bldg(033) & IB Traffic Control Bldg (033)																																																								12-Jul-17, (UUD9.1) btw IB Cargo Exam Bldg South(
UD1040	(UUD9.1 [037[S]-033-100]) - Cable laying and termination																																																							(UUD9.1 [037[S]-033-100]) - Cable laying and termina																																																					
(UUD2) between Inbd Cargo Exam Bldg North (037[N]) to Inbd VCP																																																								26-Jul-17, (UUD2) between Inbd Cargo Exam Bldg I																																																					
UD1010	(UUD2 [037[N]-IB VCP]) - Cable laying and termination																																																							(UUD2 [037[N]-IB VCP]) - Cable laying and terminat																																																					
(UUD9.3) between Inbd Private Car Exam Bldg (033) and Inbd Vehicle Clearance Plaza																																																								09-Aug-17, (UUD9.3) between Inbd Private Car Ex																																																					
UD1070	(UUD9.3 [033-IB VCP[W]]) - Cable laying and termination																																																							(UUD9.3 [033-IB VCP[W]]) - Cable laying and termi																																																					
(UUD9.2) between Inbd Private Car Exam Bldg (033) and Inbd Vehicle Clearance Plaza																																																								23-Aug-17, (UUD9.2) between Inbd Private Car E																																																					
UD1020	(UUD9.2 [033-IB VCP[E]]) - Cable laying and termination																																																							(UUD9.2 [033-IB VCP[E]]) - Cable laying and termi																																																					
Underground Ducting (UUD7) between PCB(001) and Inbd Coach Kiosks(010)																																																																																																													
Underground Ducting (UUD3.1) between CUE and Outbd Cargo Exam Bldg (023)																																																								14-Jun-17, Underground Ducting (UUD3.1) between C																																																					
UD1030	(UUD3.1 [CUE-023]) - Cable laying and termination																																																							(UUD3.1 [CUE-023]) - Cable laying and termination;																																																					
(UUD3.2) btw OB Car Exam Bldg(023) & OB PC Exam Bldg(024) & OB Traffic Control Bldg (023)																																																								28-Jun-17, (UUD3.2) btw OB Car Exam Bldg(023) & C																																																					
UD1050	(UUD3.2 [023-024-101]) - Cable laying and termination																																																							(UUD3.2 [023-024-101]) - Cable laying and termination																																																					
Underground Ducting (UUD8) between CUE and Outbd PCA (032)																																																								13-Jun-17, Underground Ducting (UUD8) between CU																																																					
UD1100	(UUD8 [CUE-032]) - Cable laying and termination																																																							(UUD8 [CUE-032]) - Cable laying and termination																																																					
(UUD4.1) between Outbd PC Exam Bldg (024) and Outbd Vehicle Clearance Plaza																																																								13-Jul-17, (UUD4.1) between Outbd PC Exam Bldg(
UD1080	(UUD4.1 [024-OB VCP]) - Cable laying and termination																																																							(UUD4.1 [024-OB VCP]) - Cable laying and terminat																																																					
(UUD5) between Outbd Car Exam Bldg (023[S]) and Outbd Vehicle Clearance Plaza																																																								27-Jun-17, (UUD5) between Outbd Car Exam Bldg (02																																																					
UD1090	(UUD5 [023[S]-OB VCP]) - Cable laying and termination																																																							(UUD5 [023[S]-OB VCP]) - Cable laying and terminat																																																					
Initial On-Site Test and Commissioning / Pre-SAT (Phase 1 / Section I)																																																																																																													
Site Acceptance Test (Phase 1 / Section I)																																																																																																													
Security Risk Assessment and Audit																																																																																																													
Operability Period Test (Phase 1 / Section I)																																																																																																													
Completion (Phase 1 /Section I)																																																																																																													
Training and Document (Phase 1 /Section I)																																																																																																													
Operation (Phase 1 /Section I)																																																																																																													
Engineering Support for Phase 1 / Section I																																																																																																													
Procurement - Phase 2 / Section II																																																																																																													
Delivery and Bench Acceptance Test for Phase 2/Section II																																																																																																													
Installation - Phase 2 / Section II																																																								30-Aug-17, Installation -Phase 2/ Section II																																																					

Programme No.: HZMB-DWP Data Date: 14-Aug-15		Hong Kong-Zhuhai-Macao Bridge Hong Kong Boundary Crossing Facilities - Automatic Vehicle Clearance Support System (AVCSS)	Date	Revision	Checked	Approved
			14-Nov-16	Rev.: 0	WC	LC
			10-Mar-17	Rev.: 1.0a	WC	LC
			5-May-17	Rev.: 1.0b	WC	LC

Activity ID	Activity Name	2015												2016				2017				2018				2019		
		Q2	Q3	Q4	Q1	Q2	Q3	Q4	Q1	Q2	Q3	Q4	Q1	Q2	Q3	Q4	Q1	Q2	Q3	Q1	Q2	Q3						
Location 8(Inbd Private Car Annex (025)) (Phase 2)		30-Aug-17; Location 8(Inbd Private Car Annex (025)) (Phase 2)																										
EM3370	L8(025) - Cable Containment in Kiosks	L8(025) - Cable Containment in Kiosks																										
EM3380	L8(025) - Cable Laying and termination	L8(025) - Cable Laying and termination																										
EM3400	L8(025) - Cable Splicing and Testing and Labeling	L8(025) - Cable Splicing and Testing and Labeling																										
Location 9(Outbd Private Car Annex (032)) (Phase 2)		30-Aug-17; Location 9(Outbd Private Car Annex (032)) (Phase 2)																										
EM3500	L9(032) - Cable Containment in Kiosks	L9(032) - Cable Containment in Kiosks																										
EM3520	L9(032) - Cable Laying and termination	L9(032) - Cable Laying and termination																										
Initial On-Site Test and Commissioning / Pre-SAT (Phase 2 / Section II)																												
Site Acceptance Test (Phase 2 / Section II)																												
Operability Period Test (Phase 2 / Section II)																												
Completion (Phase 2 / Section II)																												
Engineering Support for Phase 2 / Section II																												
Procurement for Phase2 / Section III																												
Delivery and Bench Acceptance Test for Phase2 / Section III																												
Installation - Phase 2 / Section III		09-Oct-17; Installation - Phase 2 / Section III																										
Location 10,11,12,13 (Vehicle Clearance Kiosks)		09-Oct-17; Location 10,11,12,13 (Vehicle Clearance Kiosks)																										
Location 12 Inbd Private Car Kiosks (027) - 12 nos (Phase 2)		09-Oct-17; Location 12 Inbd Private Car Kiosks (027) - 12 nos (Phase 2)																										
EM4440	L12(027)(12nos P2) - Cable Laying and termination	L12(027)(12nos P2) - Cable Laying and termination																										
EM4460	L12(027)(12nos P2) - Cable Splicing and Testing and Labeling	L12(027)(12nos P2) - Cable Splicing and Testing and Labeling																										
EM4480	L12(027)(12nos P2) - AVCSS/DOH/MOM Kiosk Equipment Installation (12 nos)	L12(027)(12nos P2) - AVCSS/DOH/MOM Kiosk Equipment Installation (12 nos)																										
Location 13 Outbd Private Car Kiosks (030) - 12 nos (Phase 2)		01-Sep-17; Location 13 Outbd Private Car Kiosks (030) - 12 nos (Phase 2)																										
EM4560	L13(030)(12nos P2) - Cable Containment in Kiosks	L13(030)(12nos P2) - Cable Containment in Kiosks																										
Location 12 Outbd Goods Vehicle Kiosks (029) - 3 nos (Phase 2)		31-Aug-17; Location 12 Outbd Goods Vehicle Kiosks (029) - 3 nos (Phase 2)																										
EM4880	L12(029)(3nos P2) - Cable Laying and termination	L12(029)(3nos P2) - Cable Laying and termination																										
EM4900	L12(029)(3nos P2) - Cable Splicing and Testing and Labeling	L12(029)(3nos P2) - Cable Splicing and Testing and Labeling																										
EM4920	L12(029)(3nos P2) - AVCSS/DOH/MOM Kiosk Equipment Installation (3 nos)	L12(029)(3nos P2) - AVCSS/DOH/MOM Kiosk Equipment Installation (3 nos)																										
EM4940	L12(029)(3nos P2) - ODB & XDB Installation (3 nos)	L12(029)(3nos P2) - ODB & XDB Installation (3 nos)																										
EM4960	L12(029)(3nos P2) - AIOP Installation (3 nos)	L12(029)(3nos P2) - AIOP Installation (3 nos)																										
EM4980	L12(029)(3nos P2) - Loop Installation (15 nos)	L12(029)(3nos P2) - Loop Installation (15 nos)																										
Location 11 Outbd Coach Kiosks (009) - 4 nos (Phase 2)																												
Location 12 Inbd Goods Vehicle Kiosks (028) - 3 nos (Phase 2)		24-Aug-17; Location 12 Inbd Goods Vehicle Kiosks (028) - 3 nos (Phase 2)																										
EM4720	L12(028)(3nos P2) - Cable Laying and termination	L12(028)(3nos P2) - Cable Laying and termination																										
EM4740	L12(028)(3nos P2) - Cable Splicing and Testing and Labeling	L12(028)(3nos P2) - Cable Splicing and Testing and Labeling																										
EM4760	L12(028)(3nos P2) - AVCSS/DOH/MOM Kiosk Equipment Installation (3 nos)	L12(028)(3nos P2) - AVCSS/DOH/MOM Kiosk Equipment Installation (3 nos)																										
EM4780	L12(028)(3nos P2) - ODB & XDB Installation (3 nos)	L12(028)(3nos P2) - ODB & XDB Installation (3 nos)																										
EM4800	L12(028)(3nos P2) - AIOP Installation (3 nos)	L12(028)(3nos P2) - AIOP Installation (3 nos)																										
EM4820	L12(028)(3nos P2) - Loop Installation (15 nos)	L12(028)(3nos P2) - Loop Installation (15 nos)																										
EM4840	L12(028)(3nos P2) - Kiosk Equipment Configuration (3 nos)	L12(028)(3nos P2) - Kiosk Equipment Configuration (3 nos)																										
EM5120	L12(028)(3nos P2) - Inbd Goods Vehicle Kiosks Installation Complete	L12(028)(3nos P2) - Inbd Goods Vehicle Kiosks Installation Complete																										
Location 10 Shuttle Bus Kiosks (006) - 4 nos (Phase 2)		30-Aug-17; Location 10 Shuttle Bus Kiosks (006) - 4 nos (Phase 2)																										
EM4000	L10(006)(4nos P2) - Cable Containment in Kiosks	L10(006)(4nos P2) - Cable Containment in Kiosks																										
Location 11 Inbd Coach Kiosks (010) - 2 nos (Phase 2)-1																												
Location 11 Inbd Coach Kiosks (010) - 2 nos (Phase 2)-2																												
Initial On-Site Test and Commissioning / Pre-SAT (Phase 2 / Section III)																												

Programme No.: HZMB-DWP Data Date: 14-Aug-15		Hong Kong-Zhuhai-Macao Bridge Hong Kong Boundary Crossing Facilities - Automatic Vehicle Clearance Support System (AVCSS)	Date	Revision	Checked	Approved
			14-Nov-16	Rev.: 0	WC	LC
			10-Mar-17	Rev.: 1.0a	WC	LC
			5-May-17	Rev.: 1.0b	WC	LC

Activity ID	Activity Name	2015			2016				2017				2018				2019			
		Q2	Q3	Q4	Q1	Q2	Q3	Q4	Q1	Q2	Q3	Q4	Q1	Q2	Q3	Q4	Q1	Q2	Q3	
	<ul style="list-style-type: none"> Site Acceptance Test (Phase 2 / Section III) Operability Period Test (Phase 2 / Section III) Completion (Phase 2 / Section III) Operation (Phase 2 / Section III) Defect Liability Period (DLP) Document Submission (Phase 2 / Section III) 																			

Programme No.: HZMB-DWP
Data Date: 14-Aug-15

- Actual Level of Effort summary
- Primary Baseline
- Actual Work
- Remaining Work
- Critical Remaining Work
- Baseline Milestone
- Milestone

Hong Kong-Zhuhai-Macao Bridge
Hong Kong Boundary Crossing
Facilities - Automatic Vehicle
Clearance Support System (AVCSS)

Date	Revision	Checked	Approved
14-Nov-16	Rev.: 0	WC	LC
10-Mar-17	Rev.: 1.0a	WC	LC
5-May-17	Rev.: 1.0b	WC	LC