

Remarks:

Confirmed by ENPO, the air quality monitoring (both 1-hr and 24-hr TSP) and noise monitoring at AMS3C has been undertaken by the ET for Contract No. HY/2013/04 since 20 August 2018.

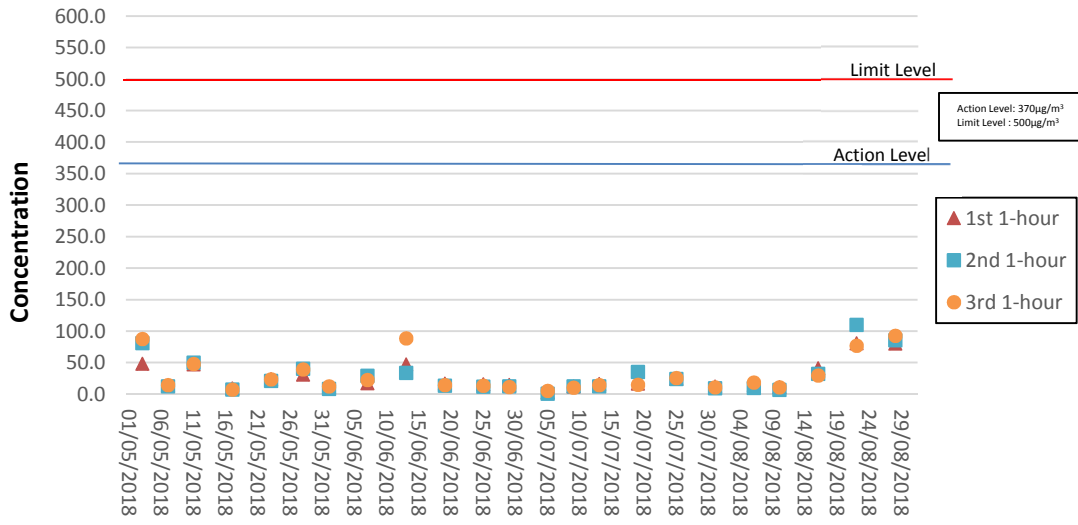
There air quality monitoring at AMS3B has been relocated and renamed as AMS3C. The change is summarized as below:

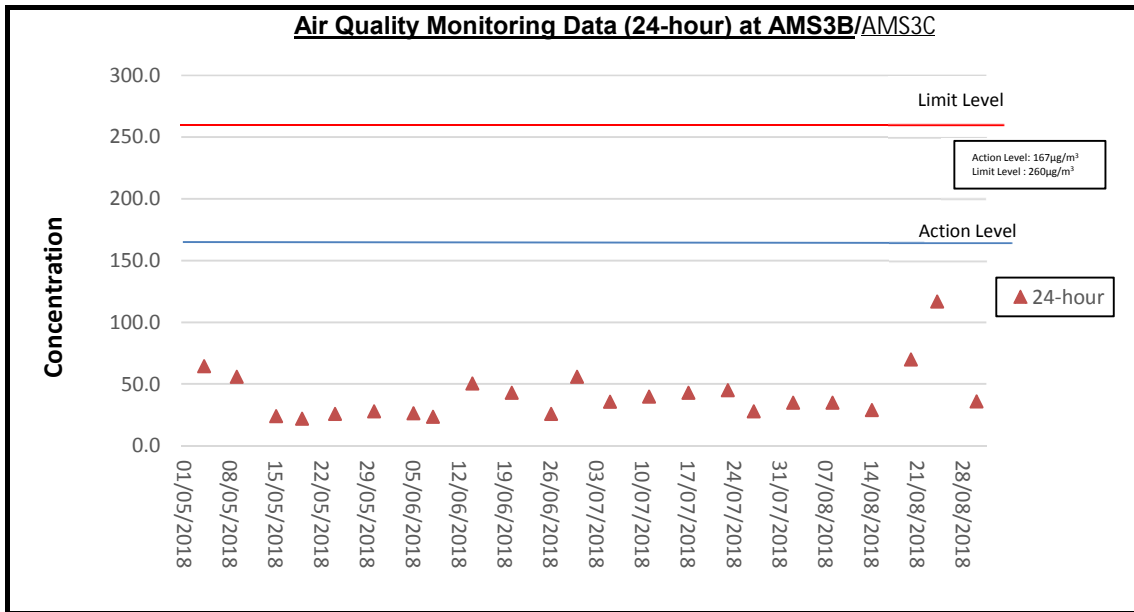
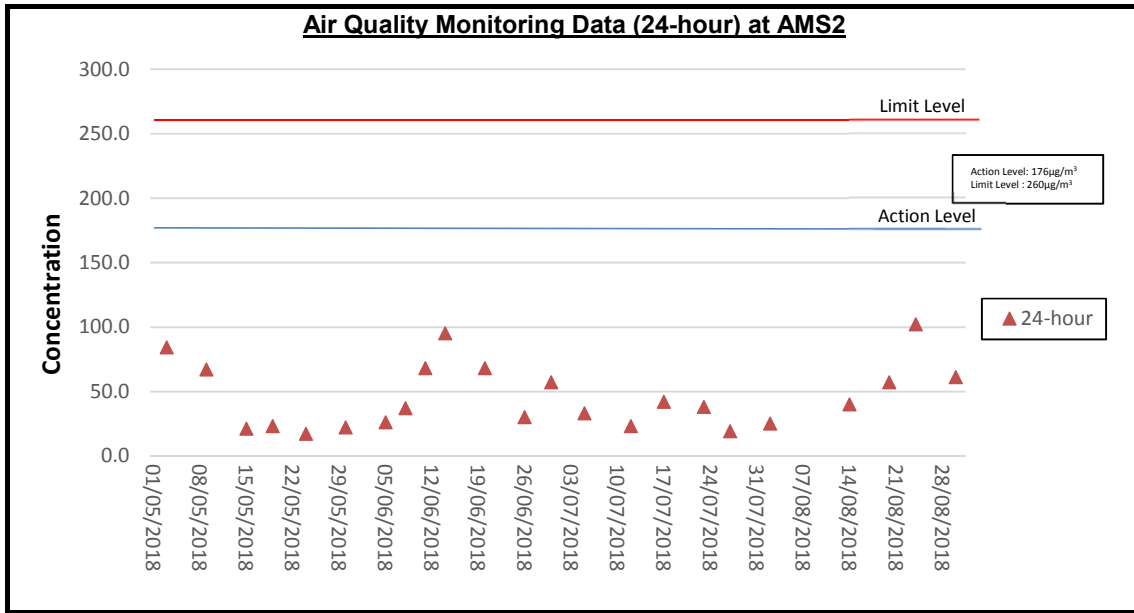
Air Quality Monitoring - Station Location:

AMS3B: AECOM PRE's Office

AMS3C: Ying Tung Estate Market Rooftop

Air Quality Monitoring Data (1-hour) at AMS7B





Remarks:

Confirmed by ENPO, the air quality monitoring (both 1-hr and 24-hr TSP) and noise monitoring at AMS3C has been undertaken by the ET for Contract No. HY/2013/04 since 20 August 2018.

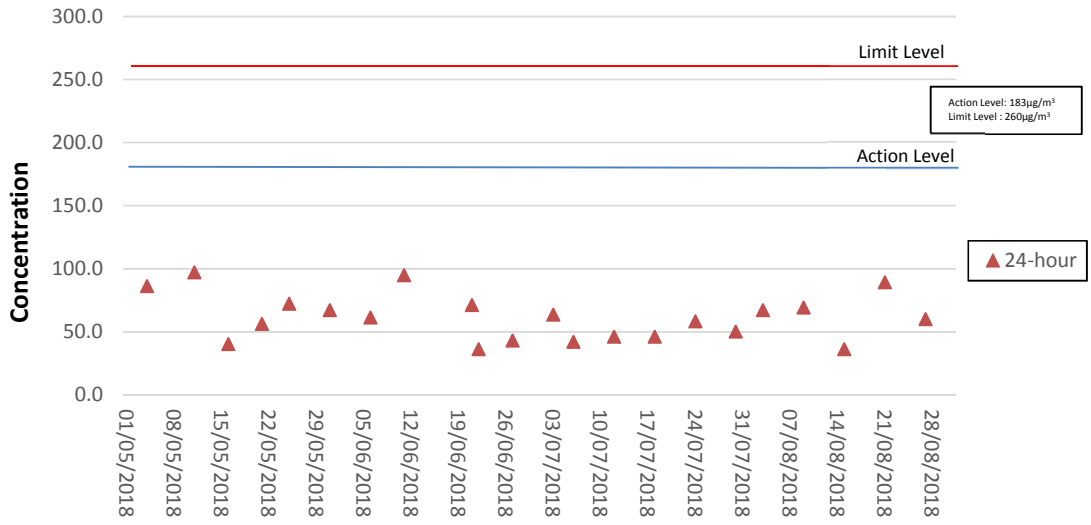
There air quality monitoring at AMS3B has been relocated and renamed as AMS3C. The change is summarized as below:

Air Quality Monitoring - Station Location:

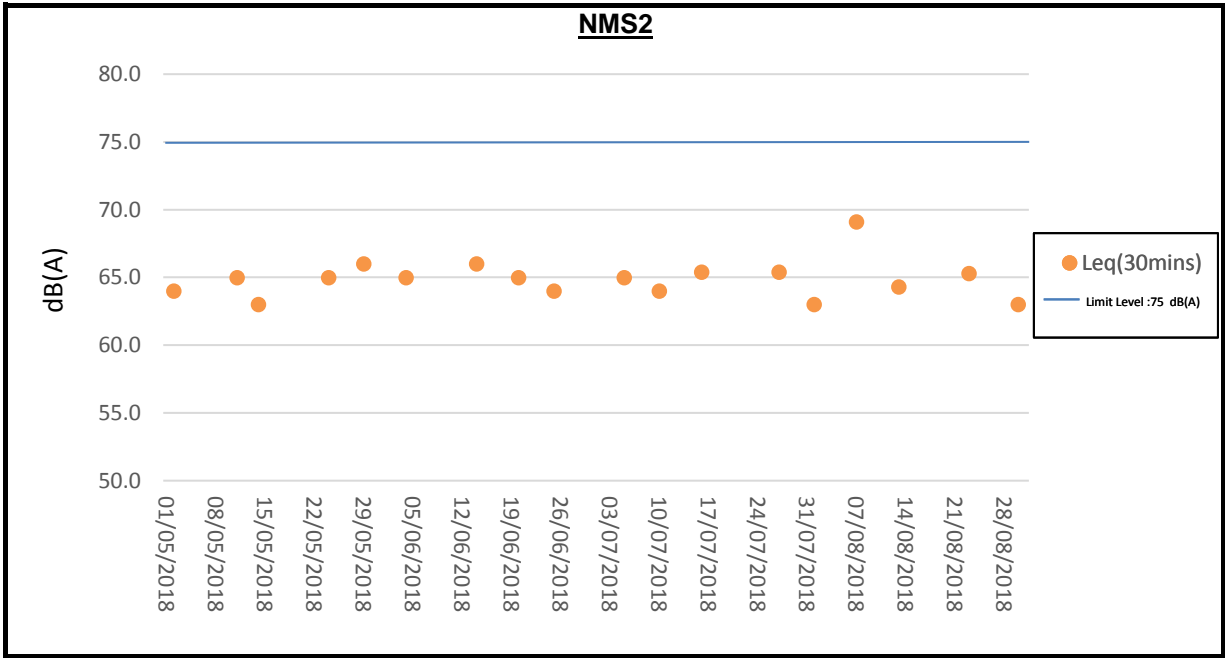
AMS3B: AECOM PRE's Office

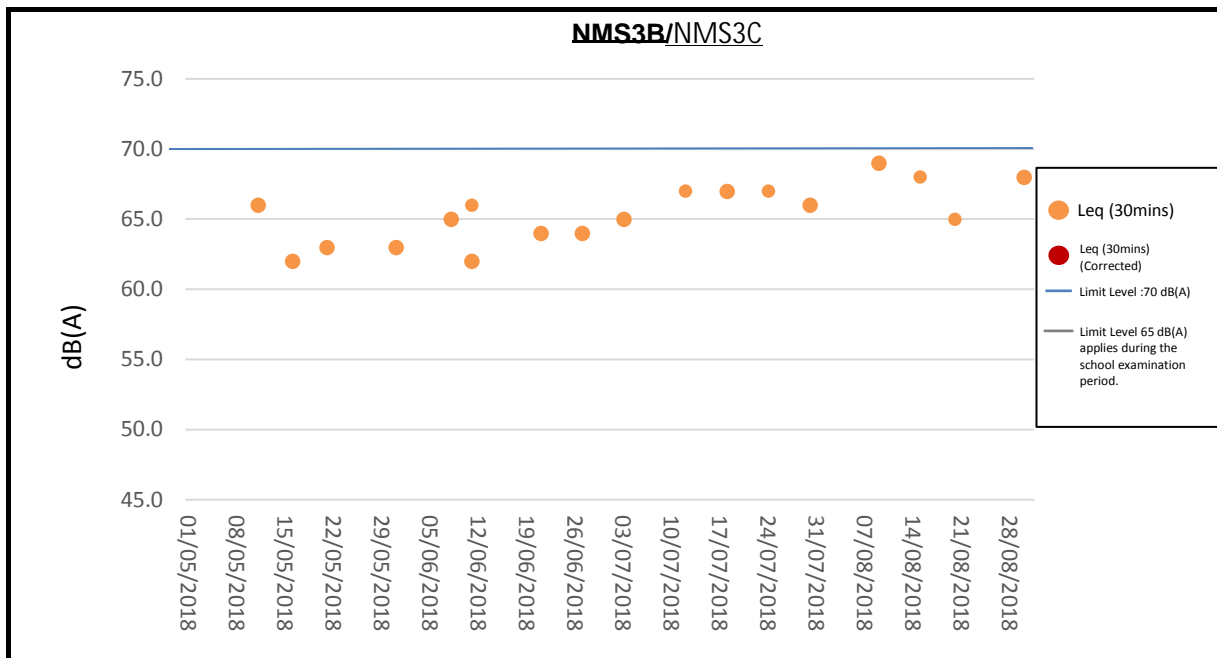
AMS3C: Ying Tung Estate Market Rooftop

Air Quality Monitoring Data (24-hour) at AMS7B



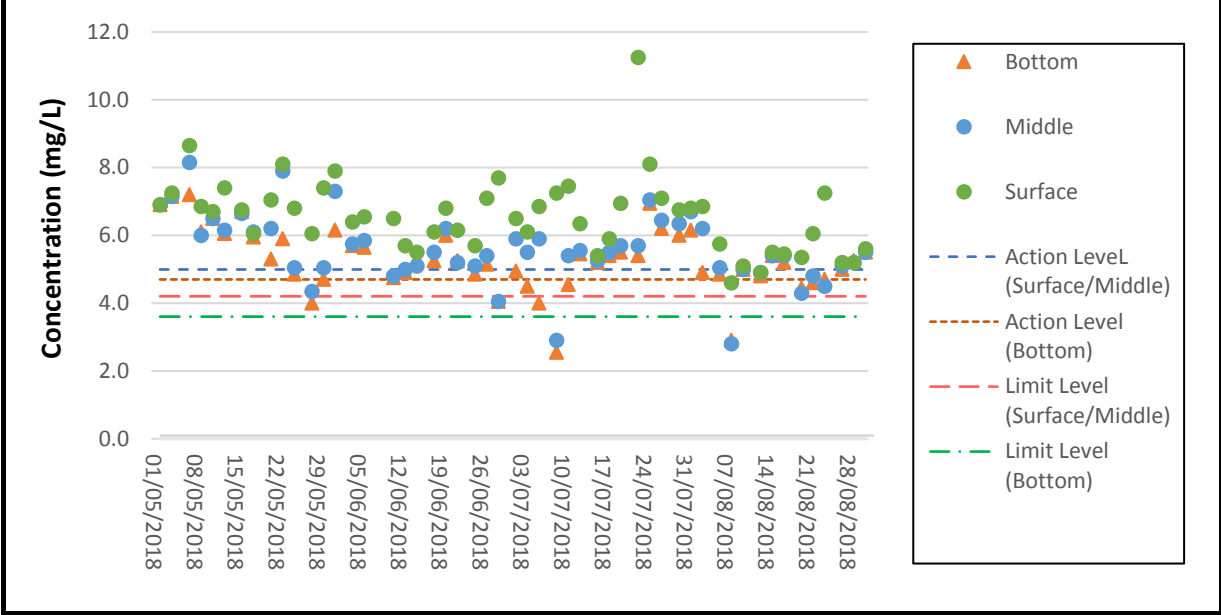
NMS2



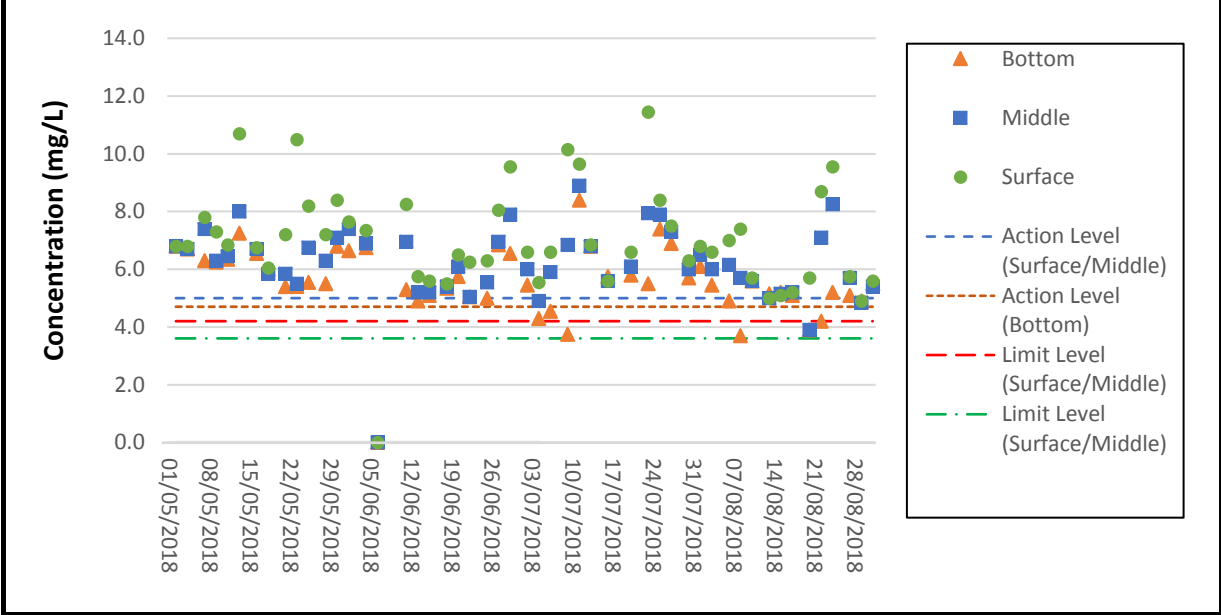


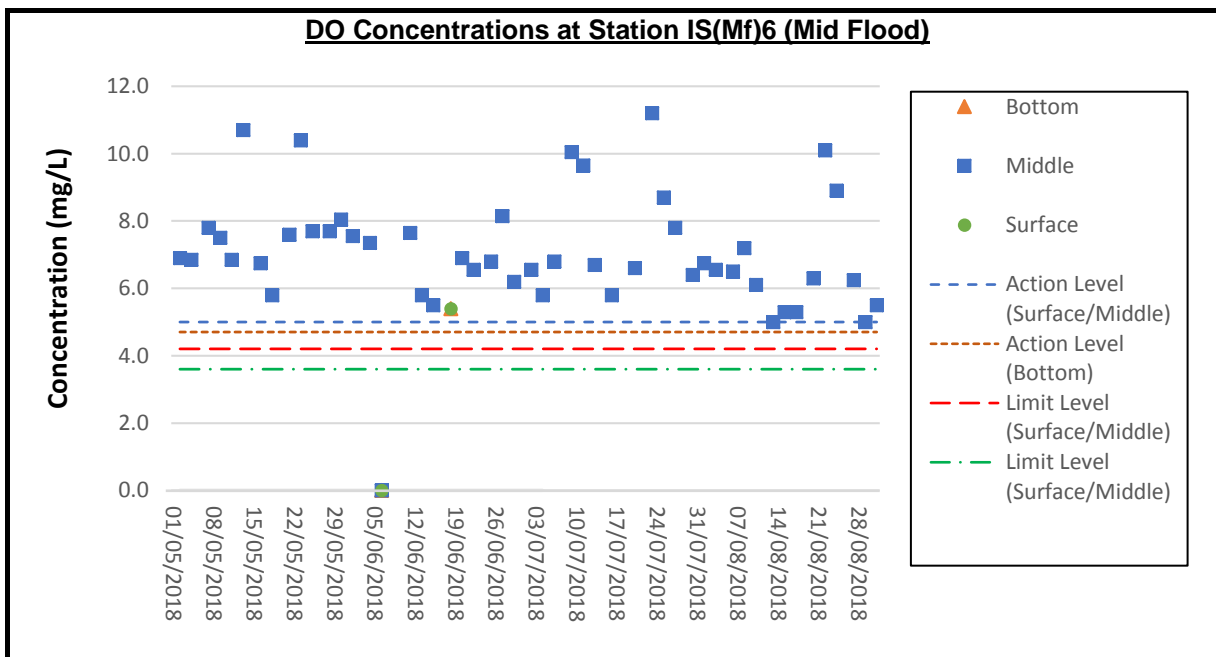
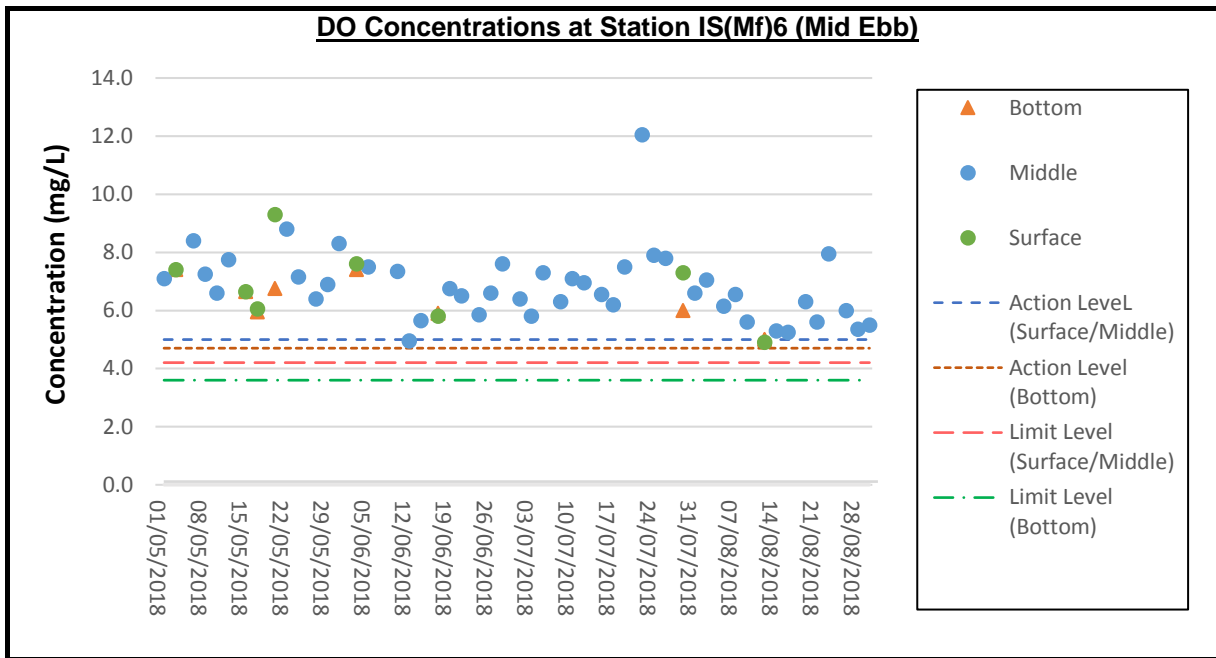
The noise monitoring at station NMS3B has been relocated and renamed as NMS3C which has been undertaken by the ET for Contract No. HY/2013/04 since 20 August 2018.

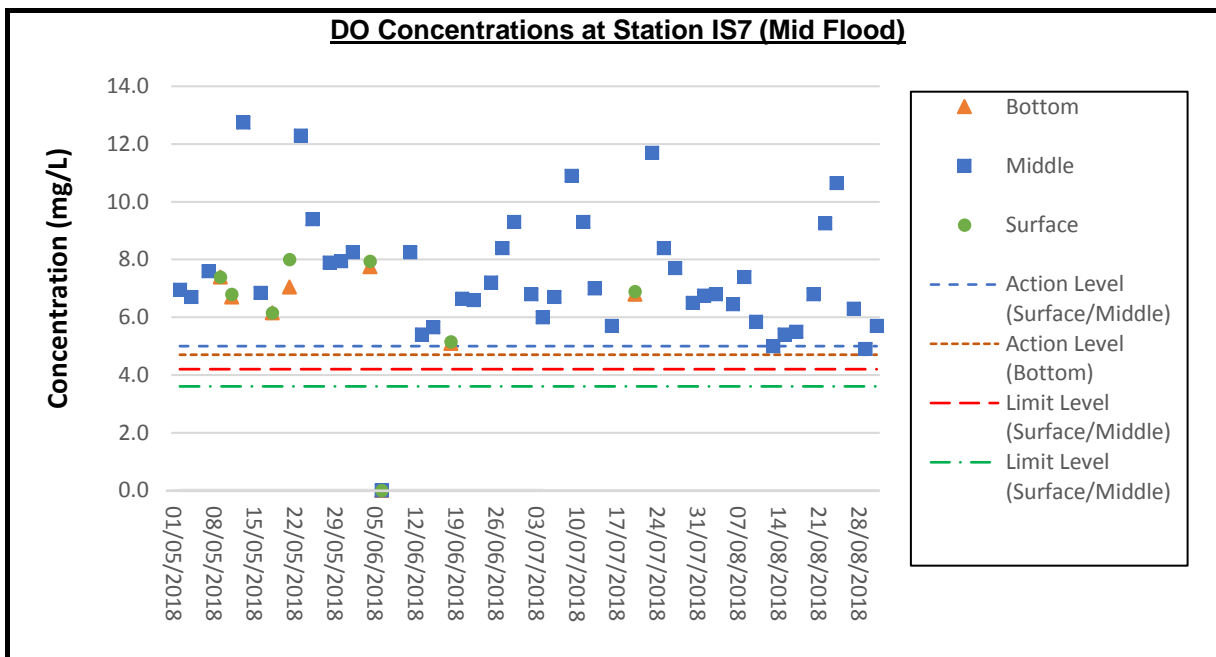
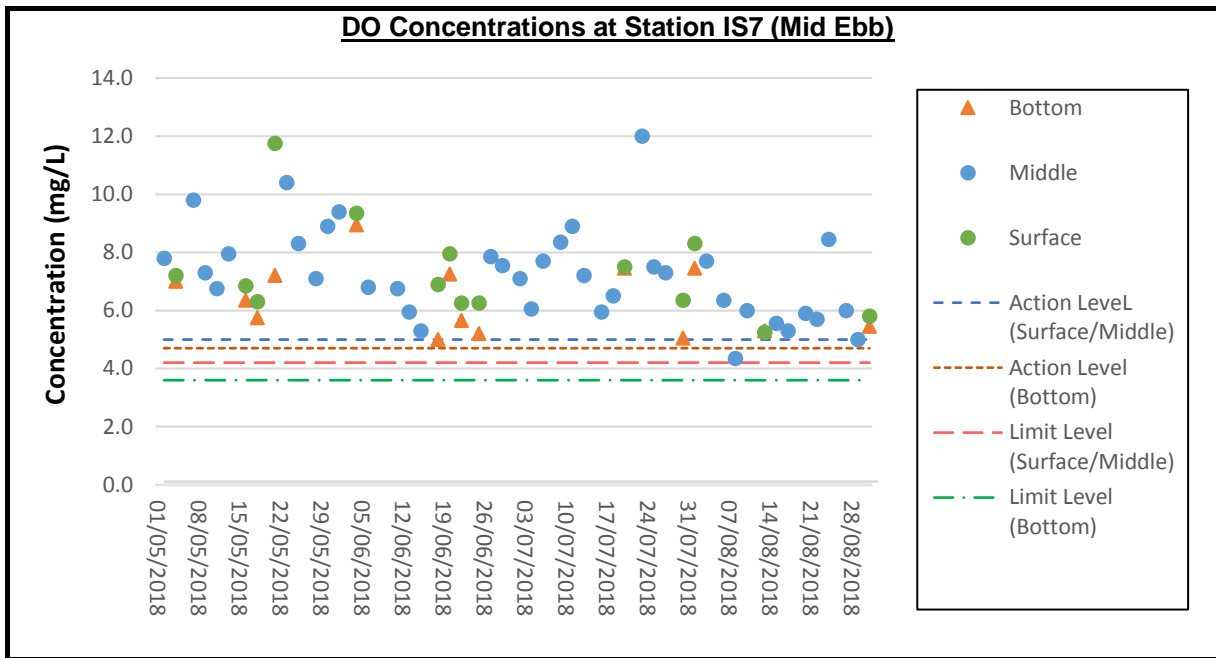
DO Concentrations at Station IS5 (Mid Ebb)



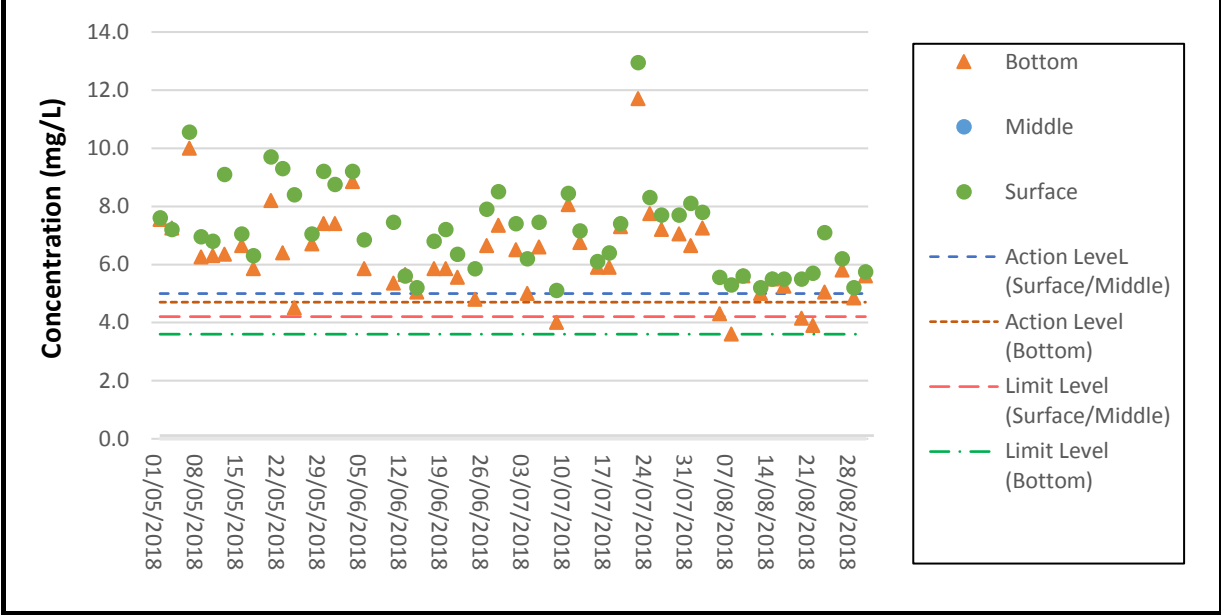
DO Concentrations at Station IS5 (Mid Flood)



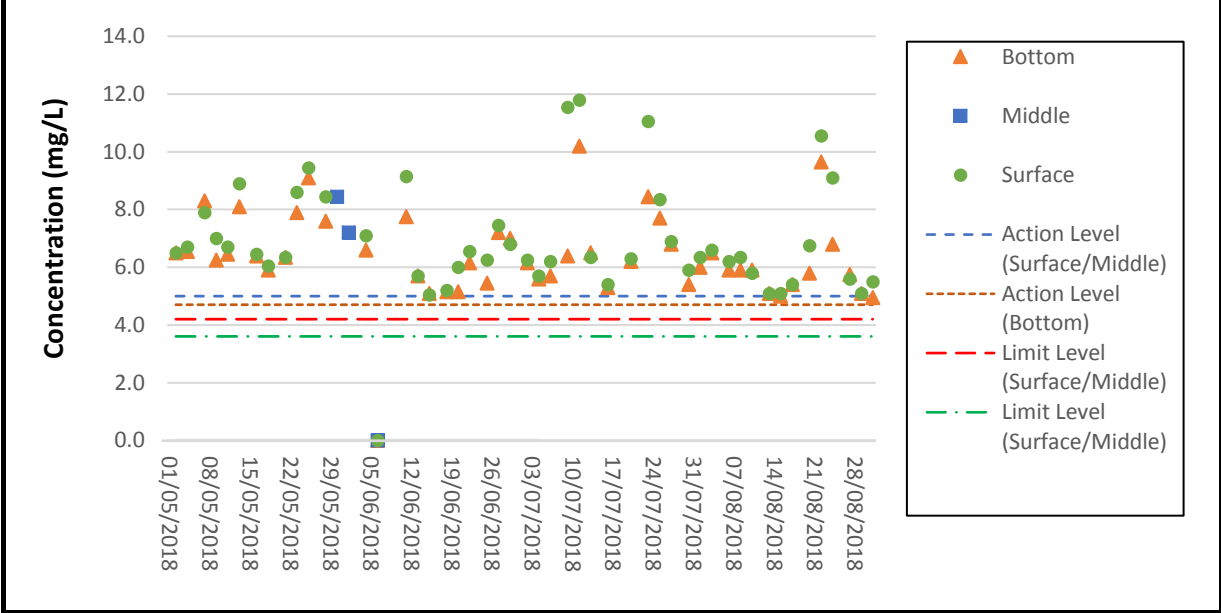




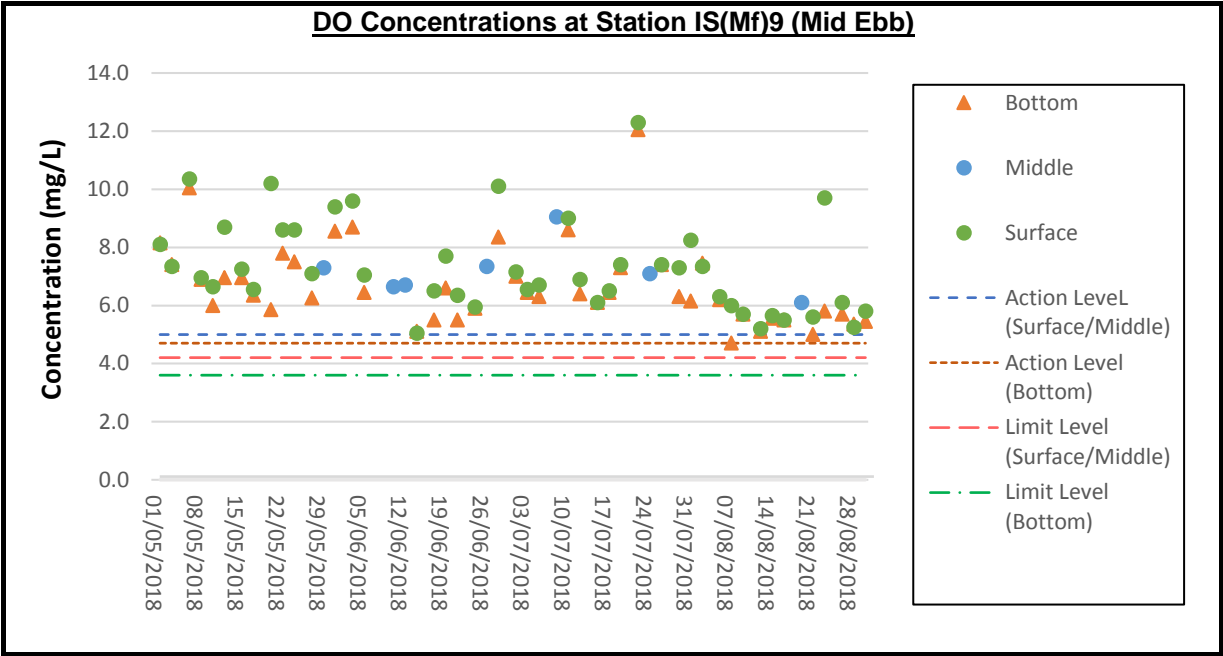
DO Concentrations at Station IS8 (Mid Ebb)



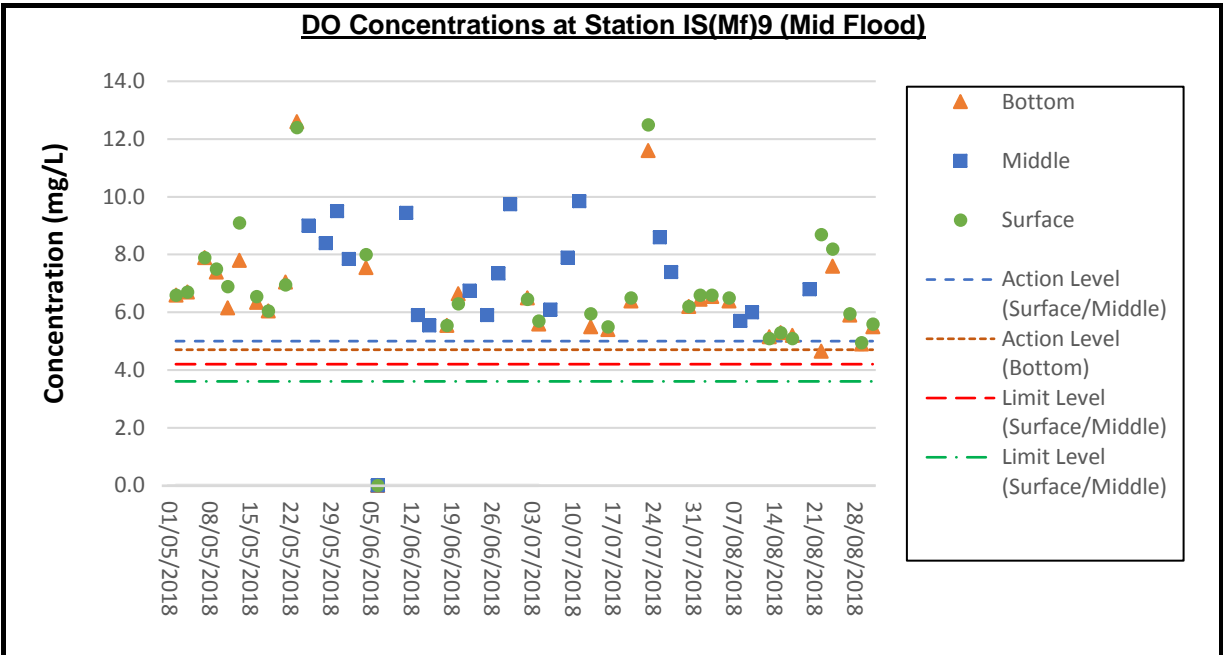
DO Concentrations at Station IS8 (Mid Flood)

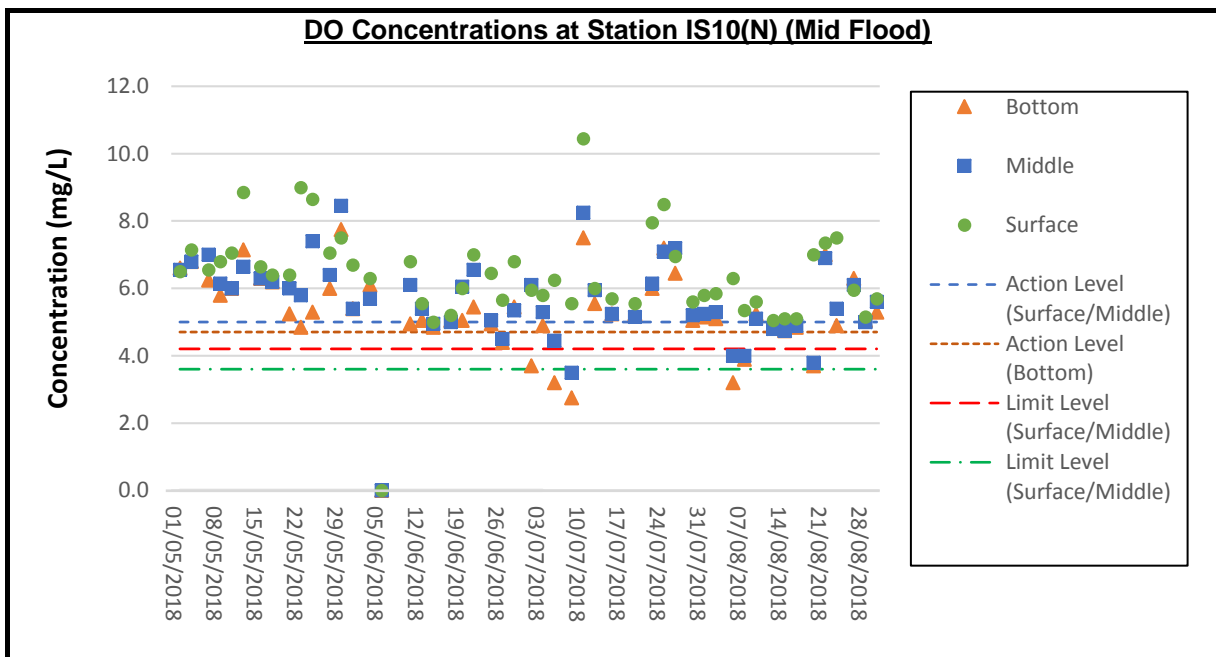
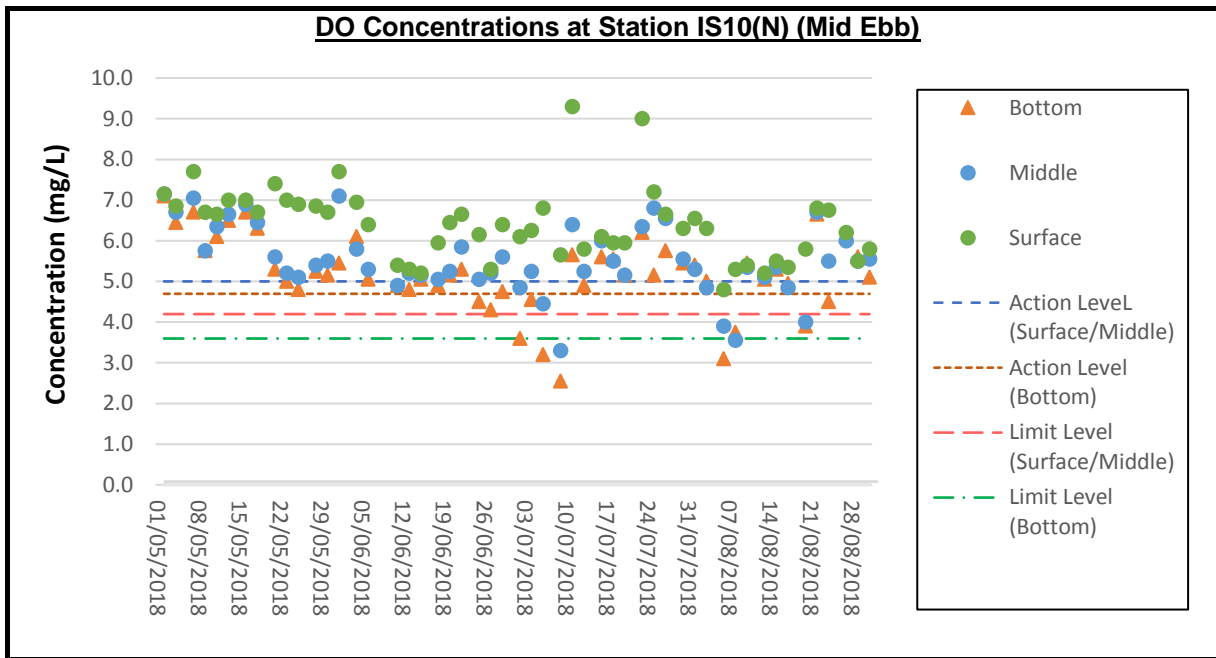


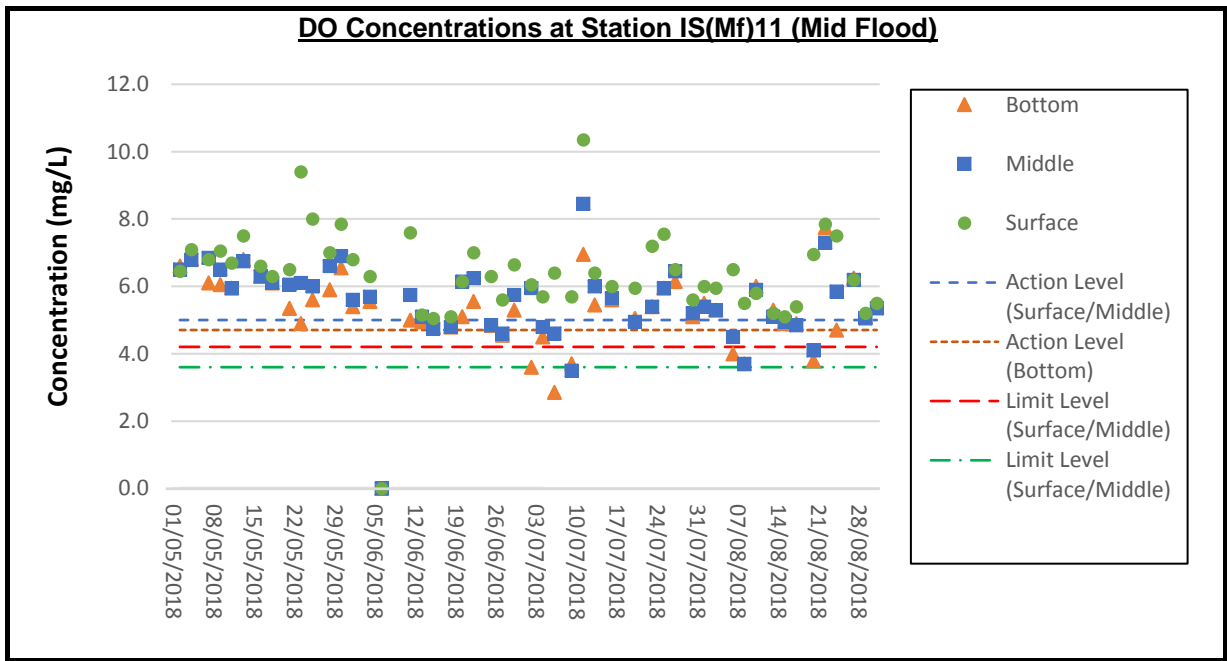
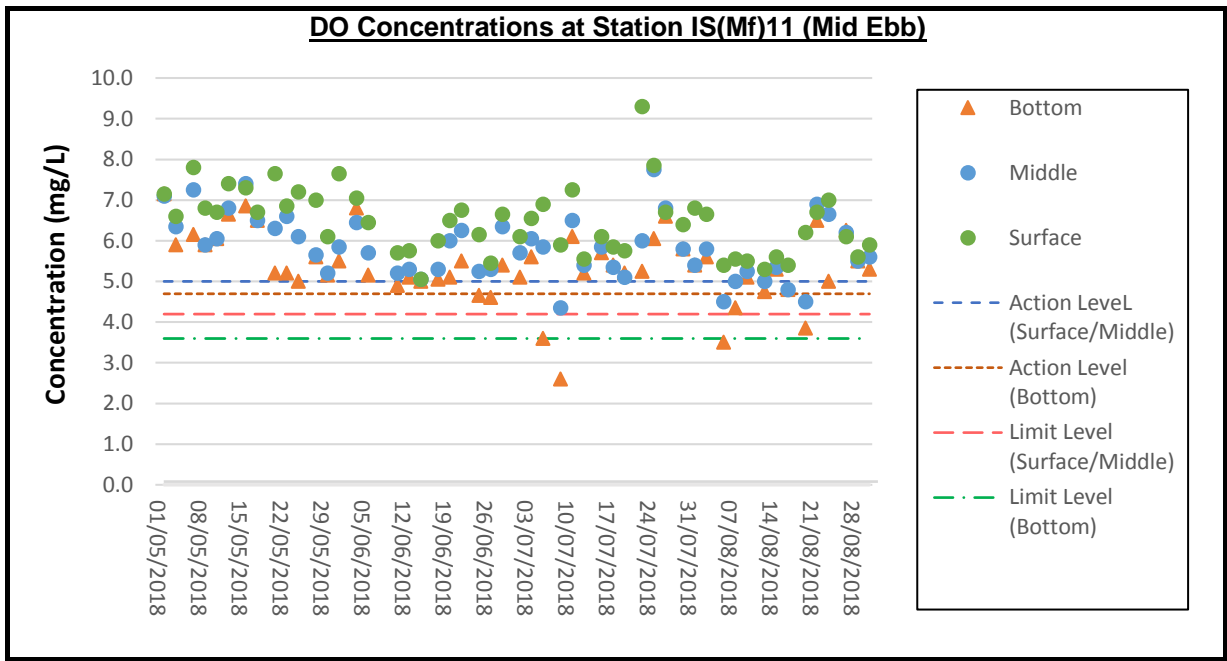
DO Concentrations at Station IS(Mf)9 (Mid Ebb)

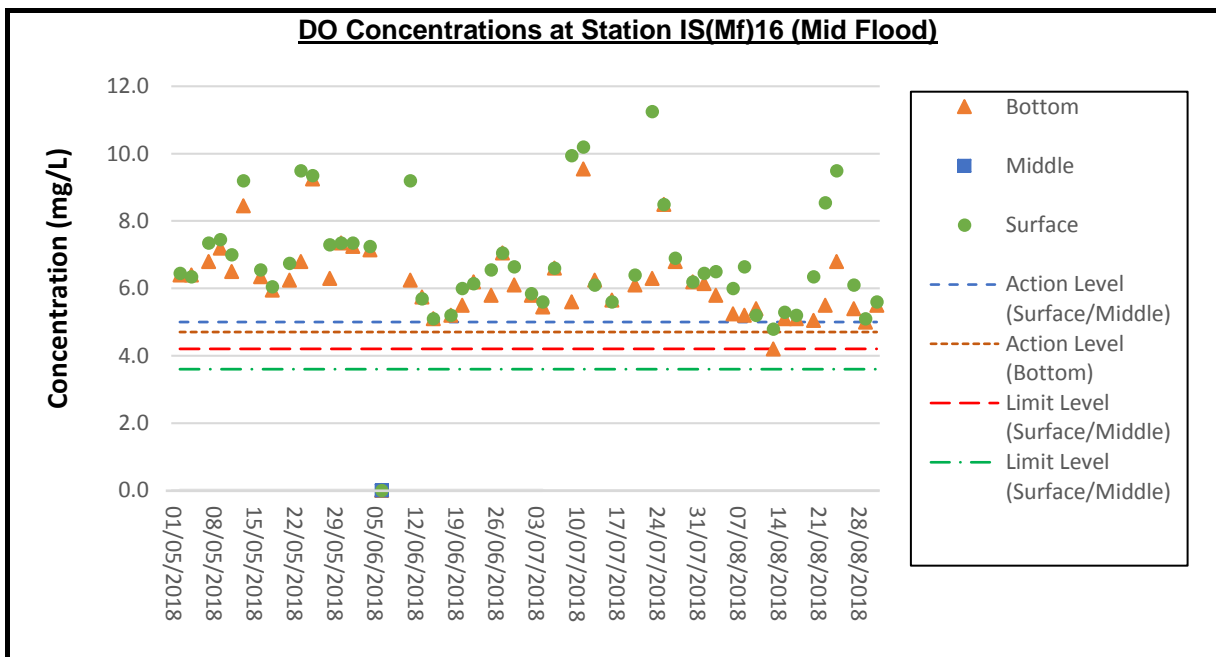
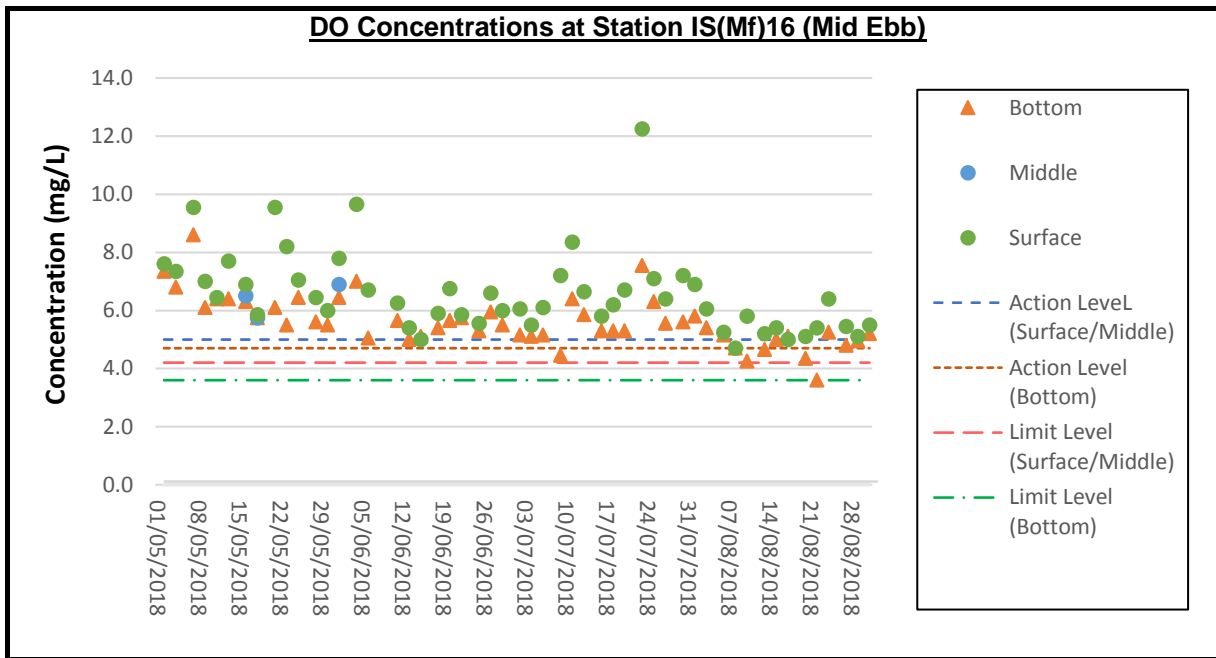


DO Concentrations at Station IS(Mf)9 (Mid Flood)

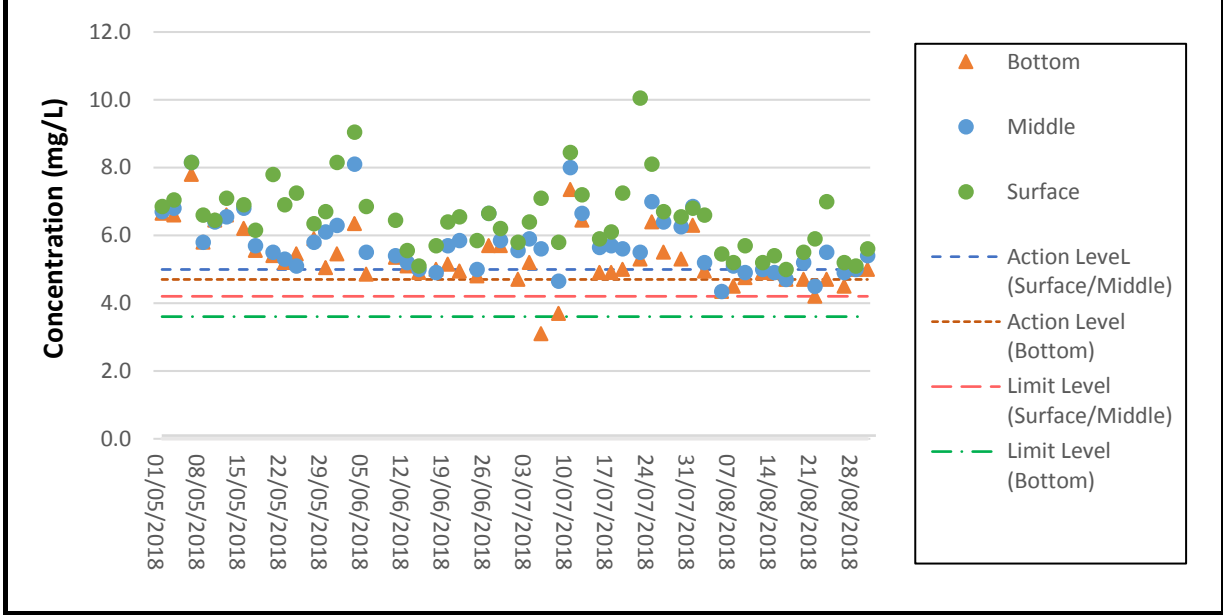




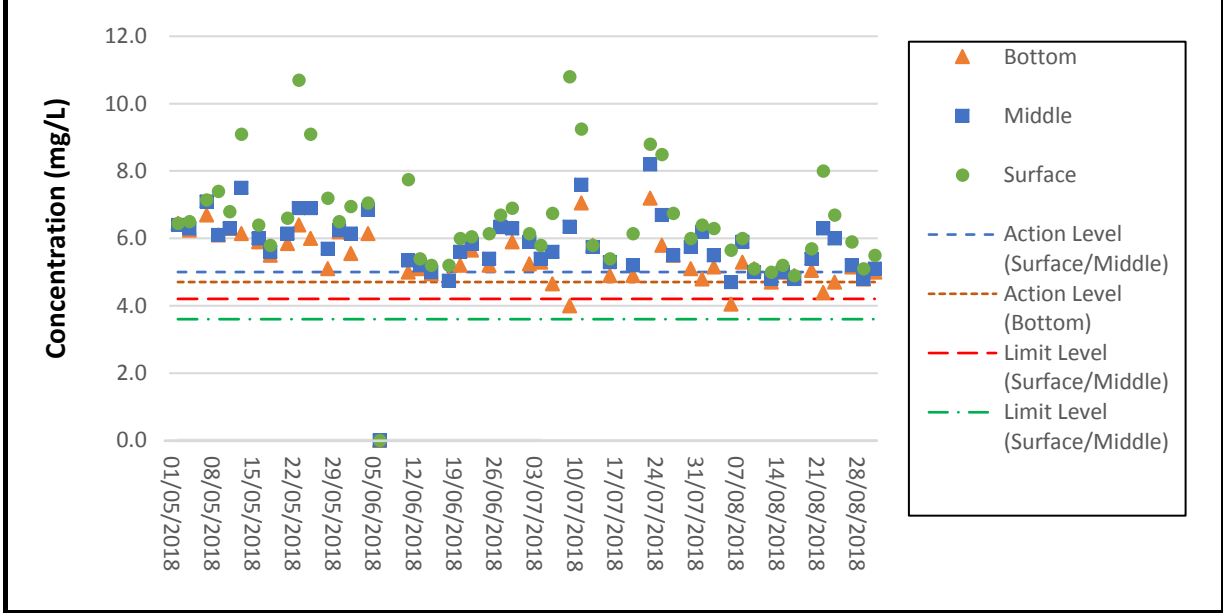


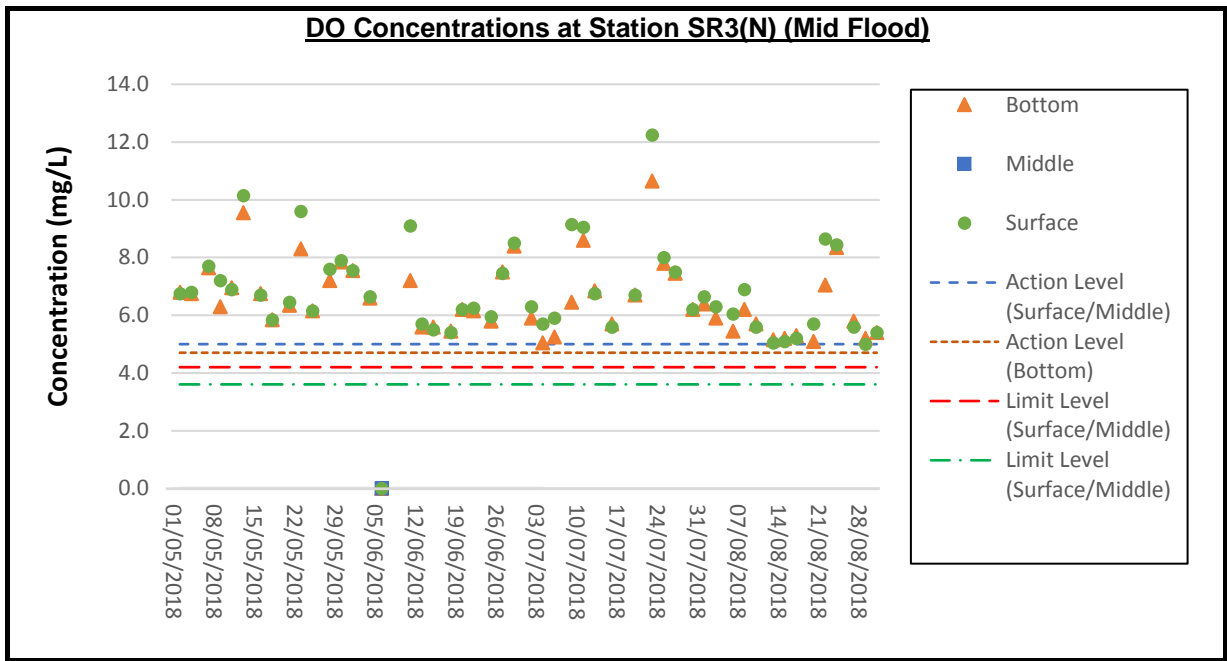
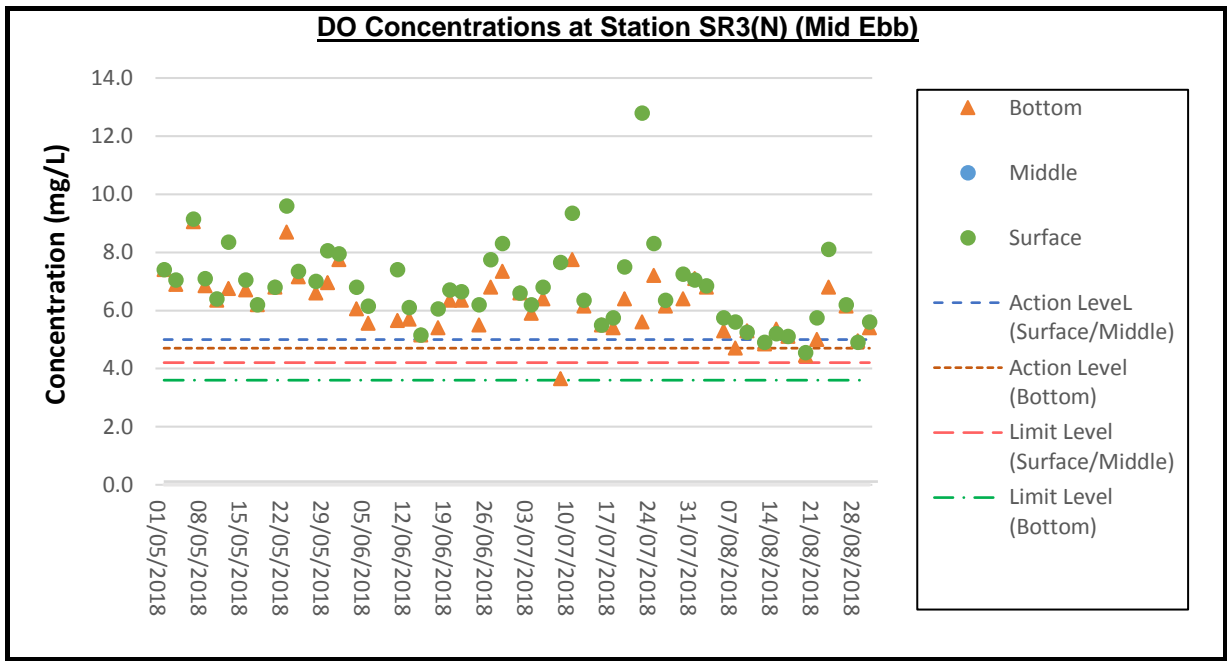


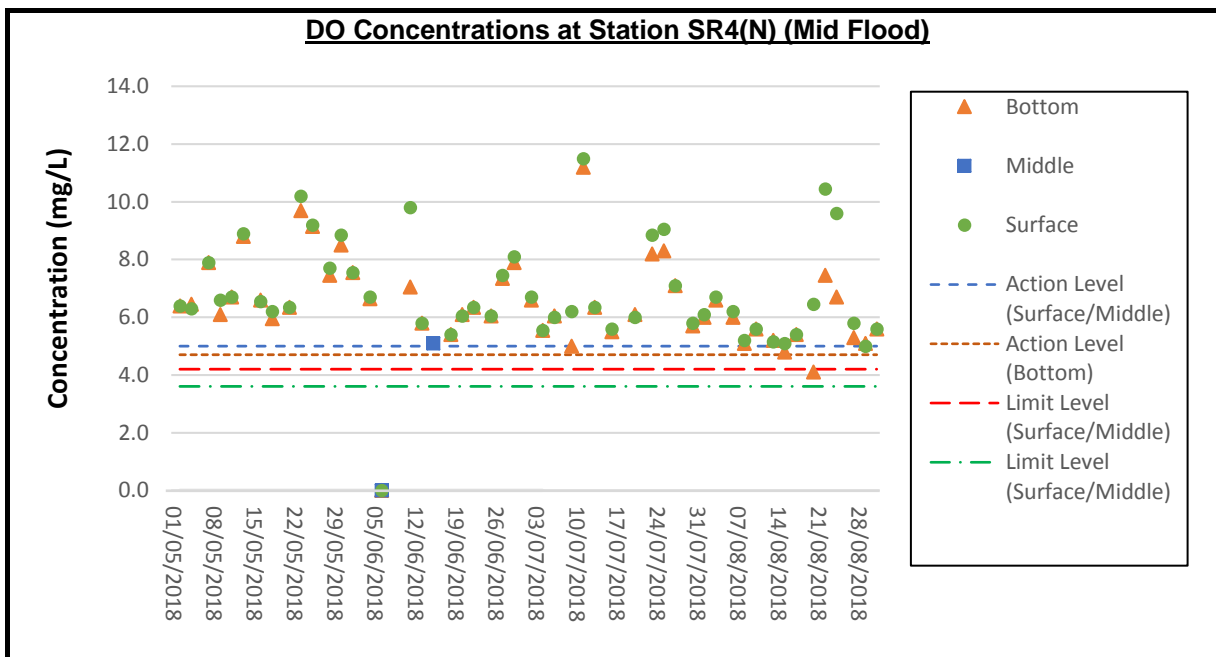
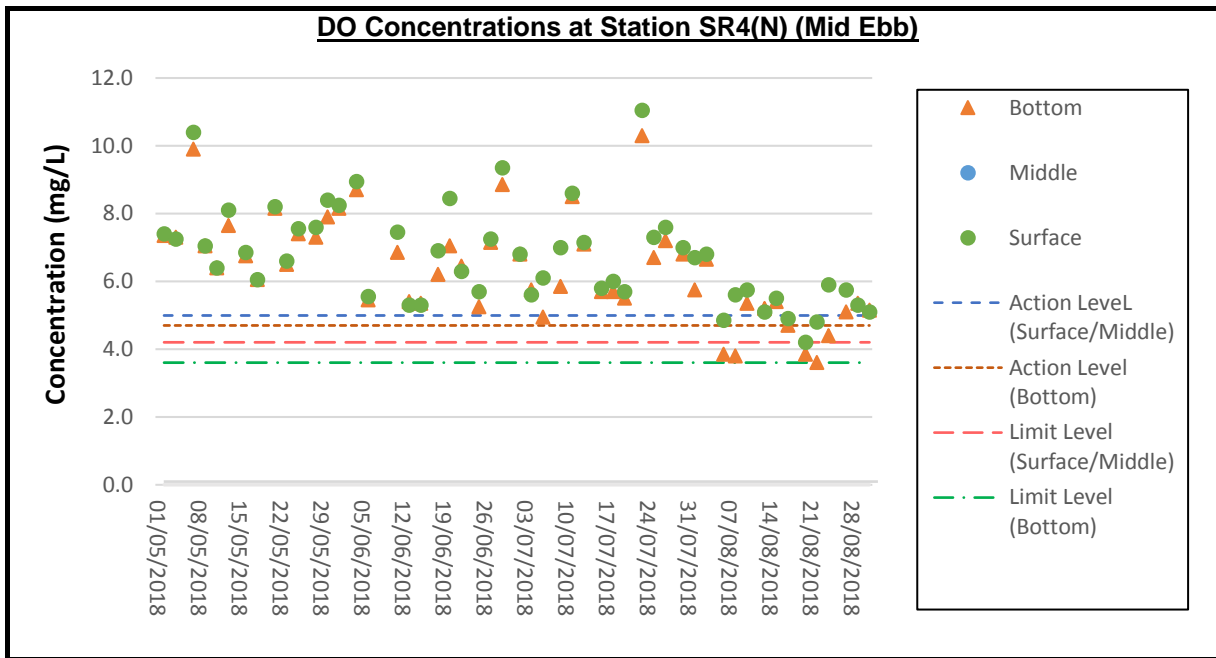
DO Concentrations at Station IS17 (Mid Ebb)

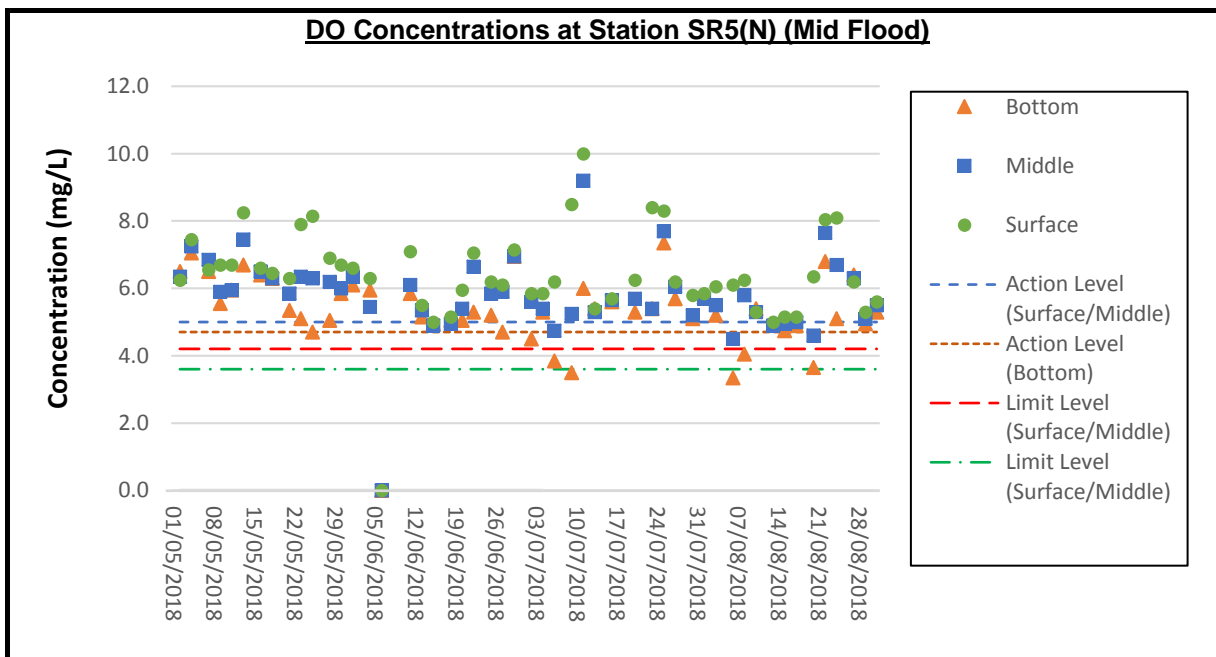
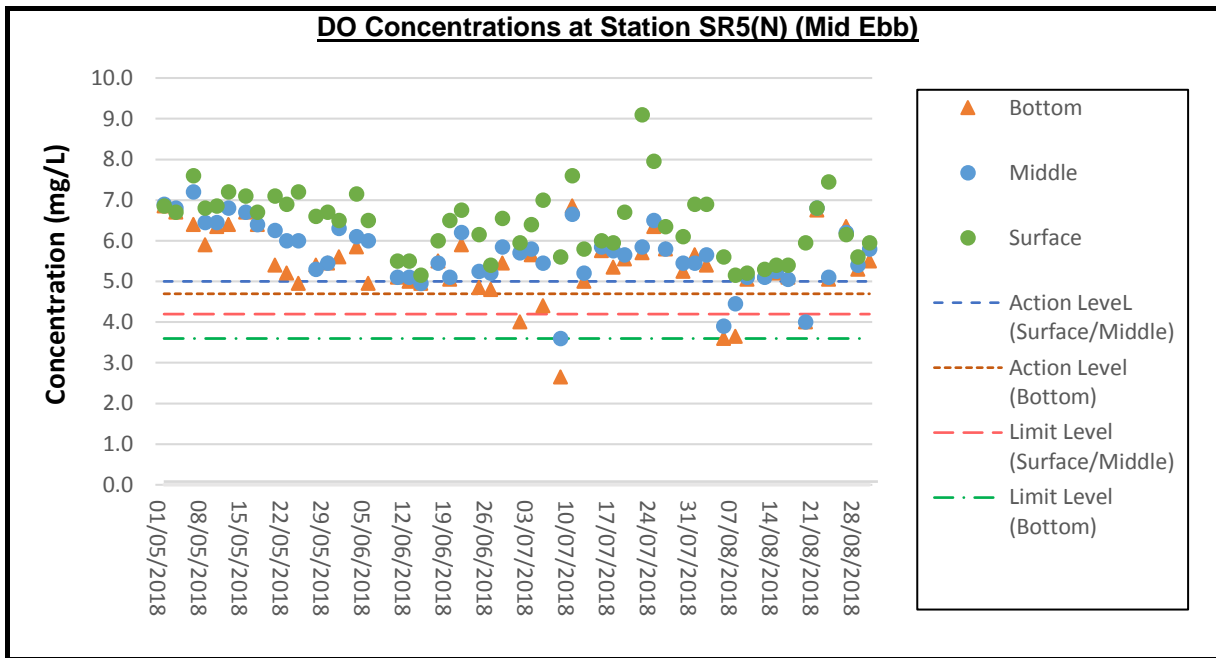


DO Concentrations at Station IS17 (Mid Flood)

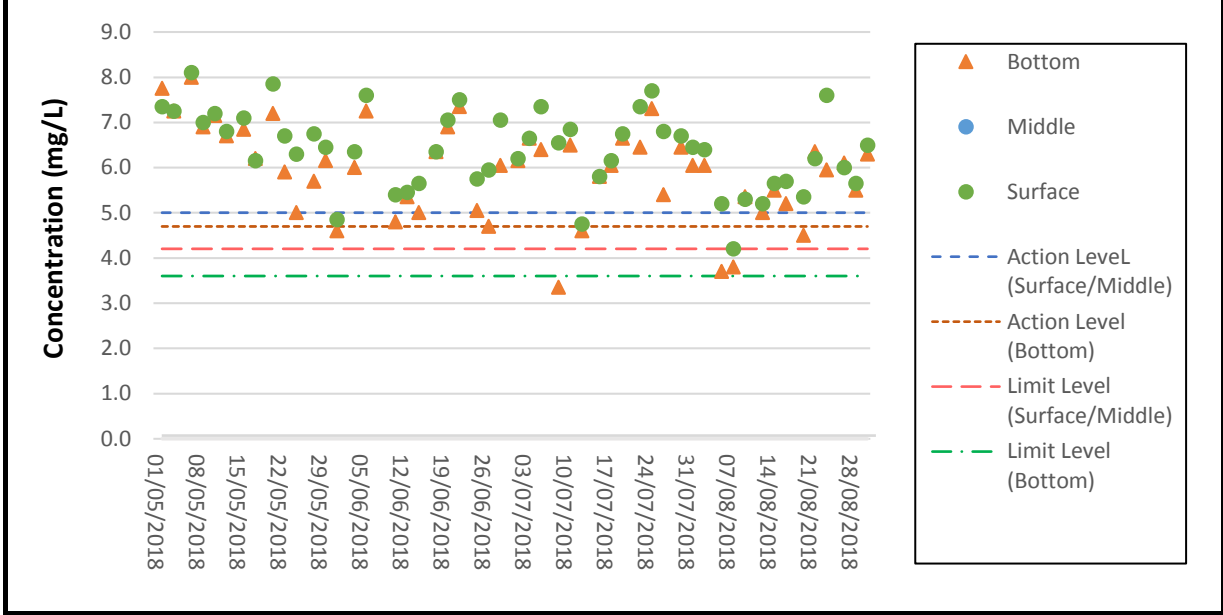




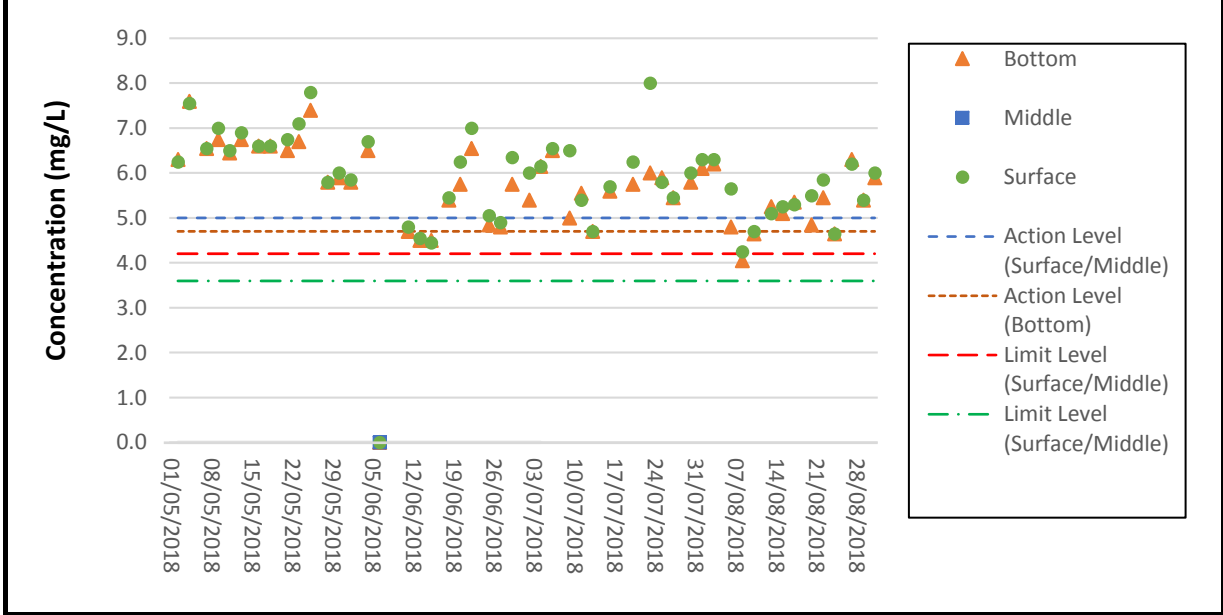




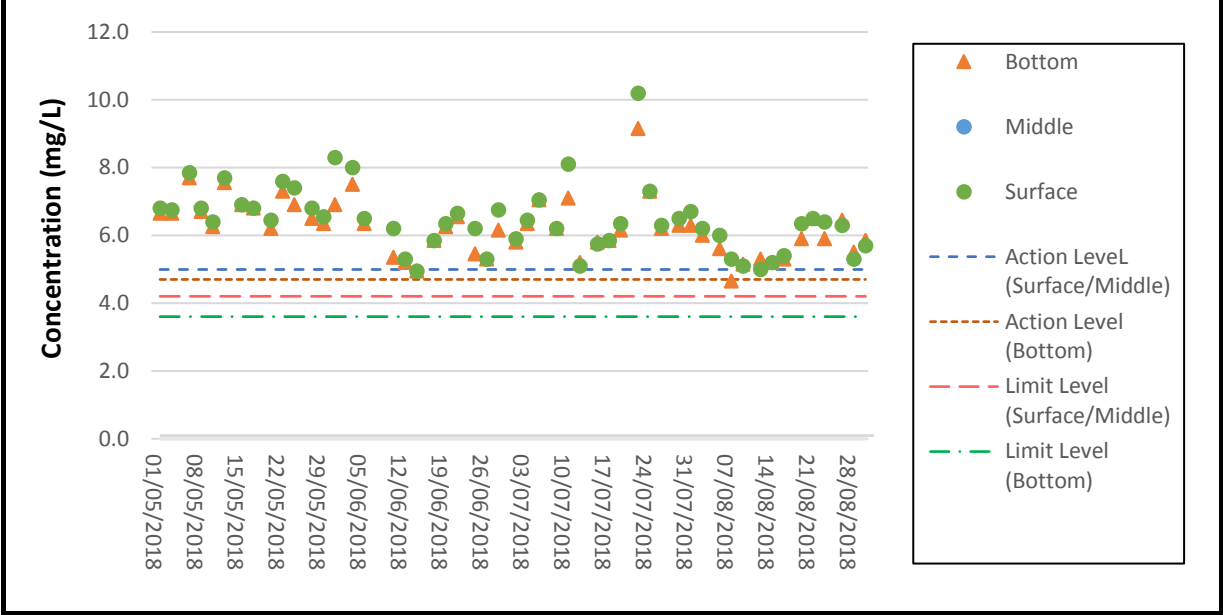
DO Concentrations at Station SR6 (Mid Ebb)



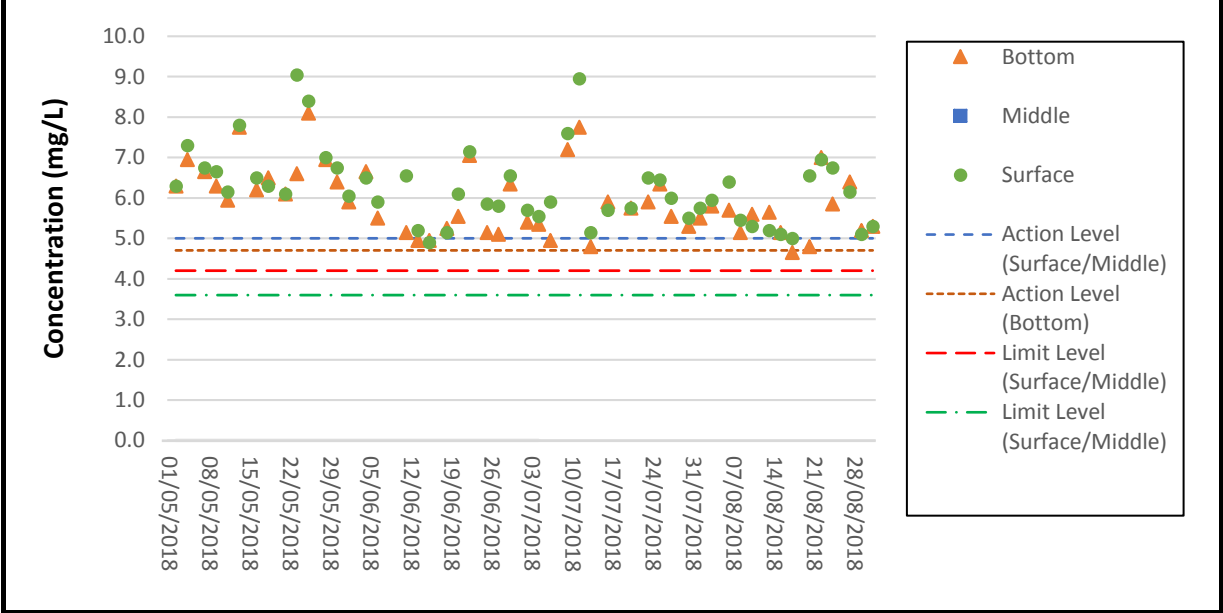
DO Concentrations at Station SR6 (Mid Flood)

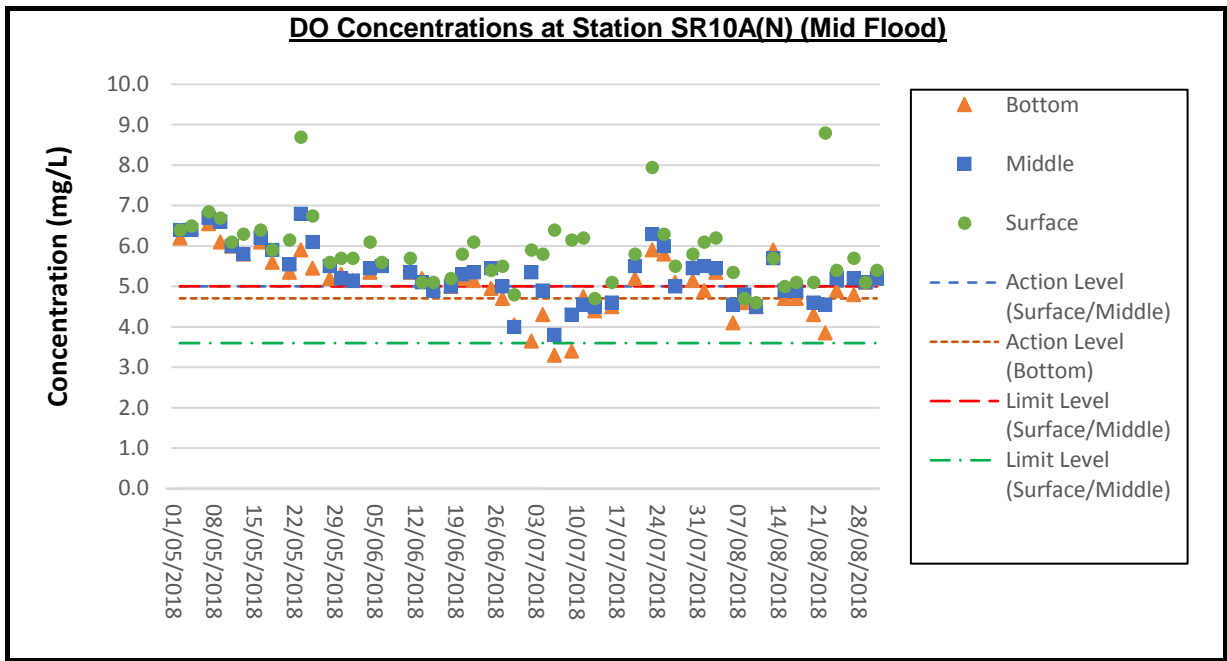
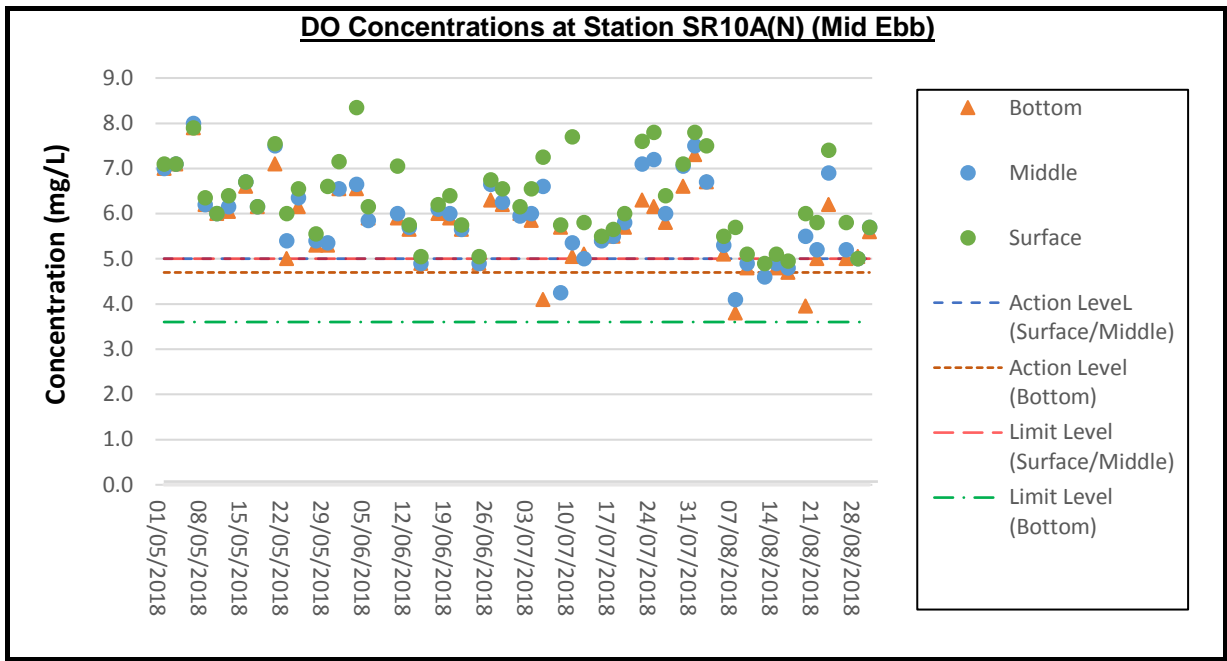


DO Concentrations at Station SR7 (Mid Ebb)

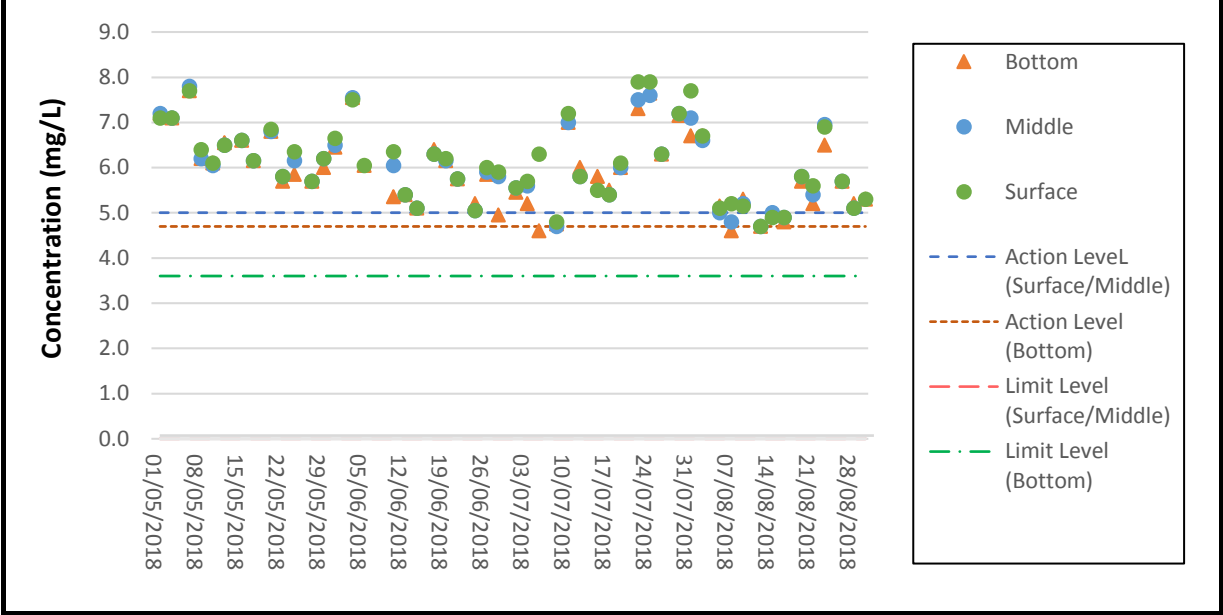


DO Concentrations at Station SR7 (Mid Flood)

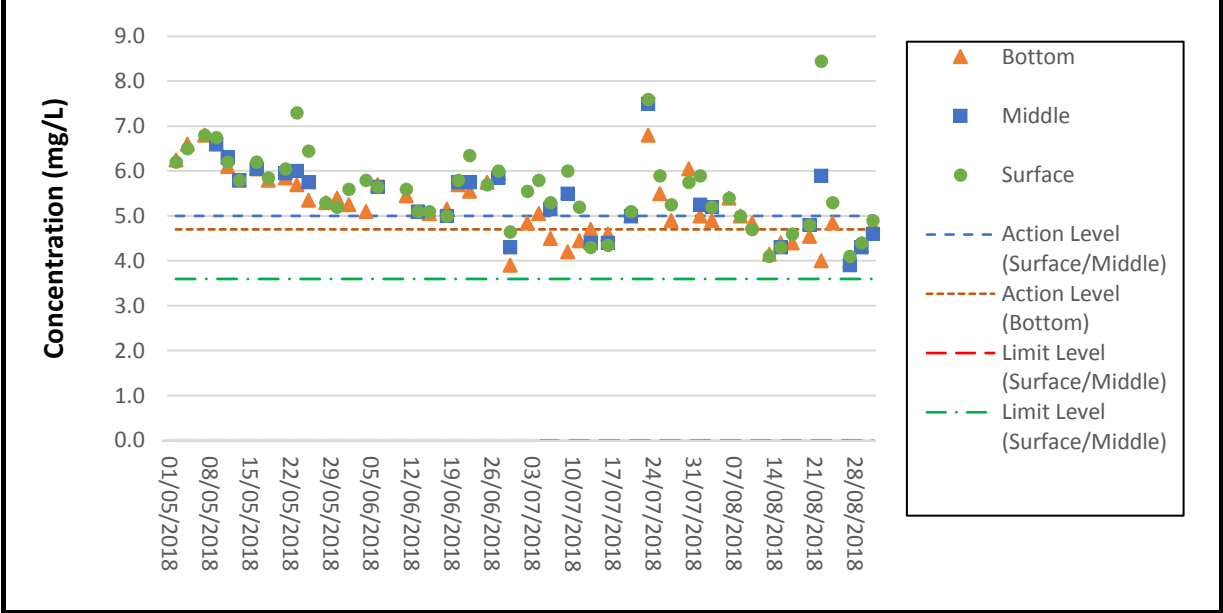




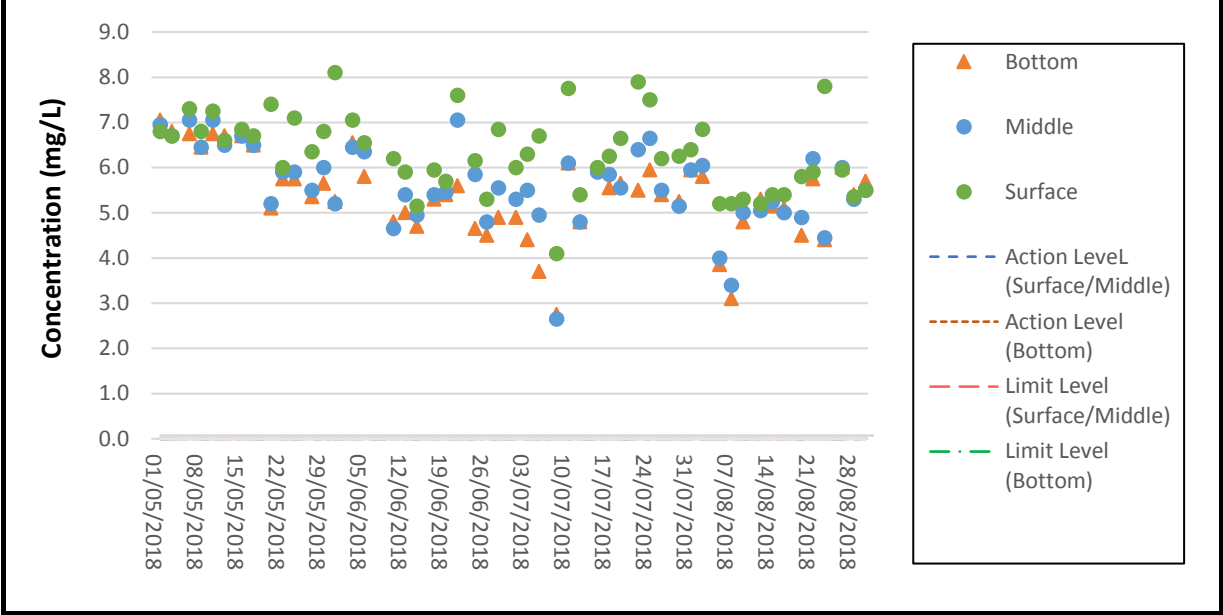
DO Concentrations at Station SR10B(N2) (Mid Ebb)



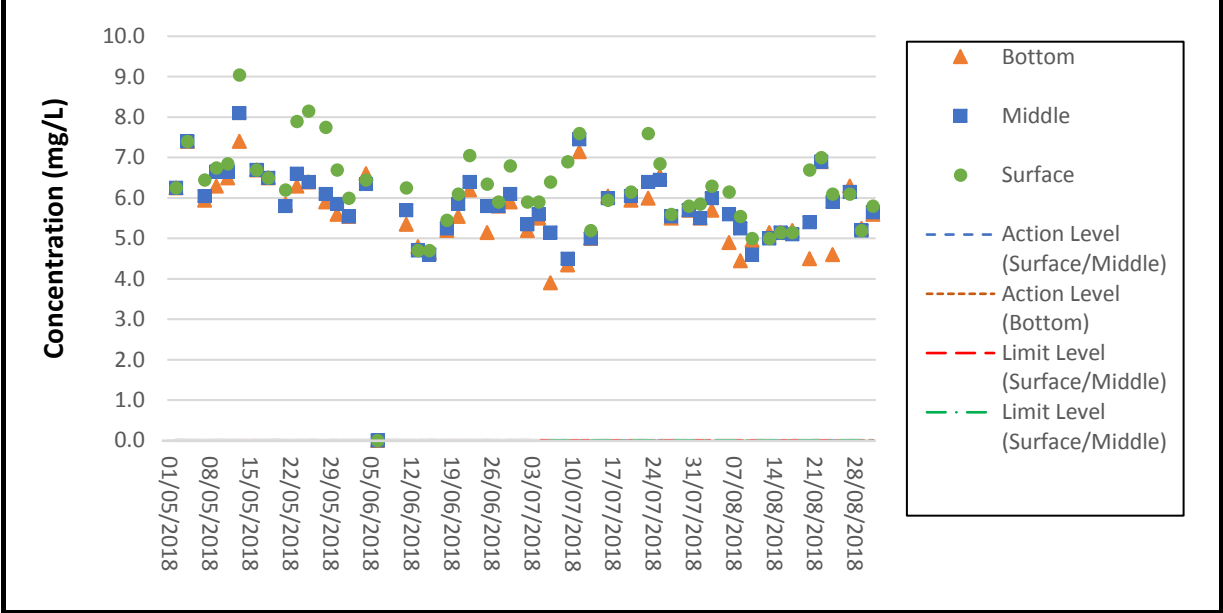
DO Concentrations at Station SR10B(N2) (Mid Flood)



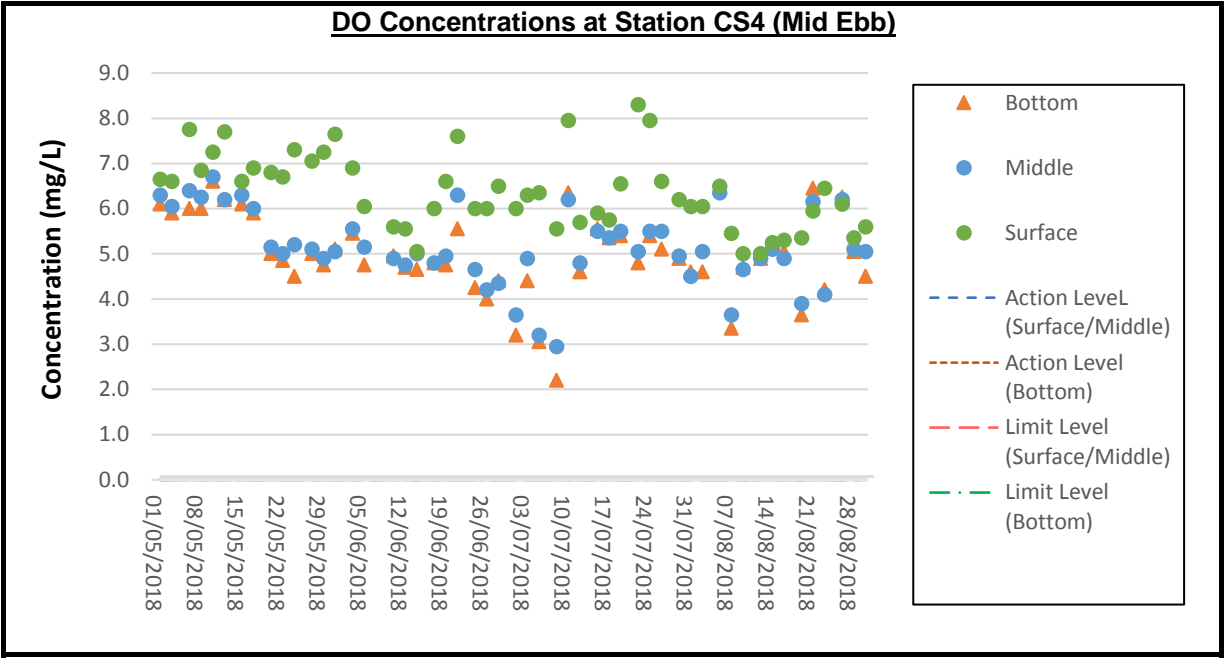
DO Concentrations at Station CS(Mf)3(N) (Mid Ebb)



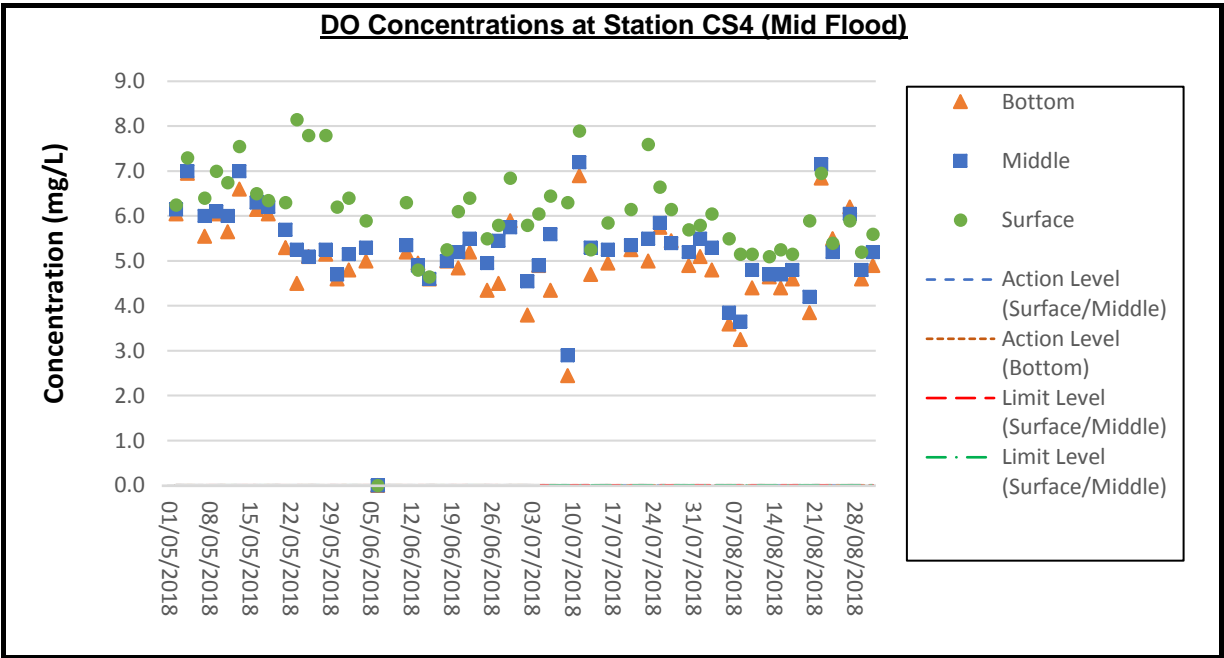
DO Concentrations at Station CS(Mf)3(N) (Mid Flood)

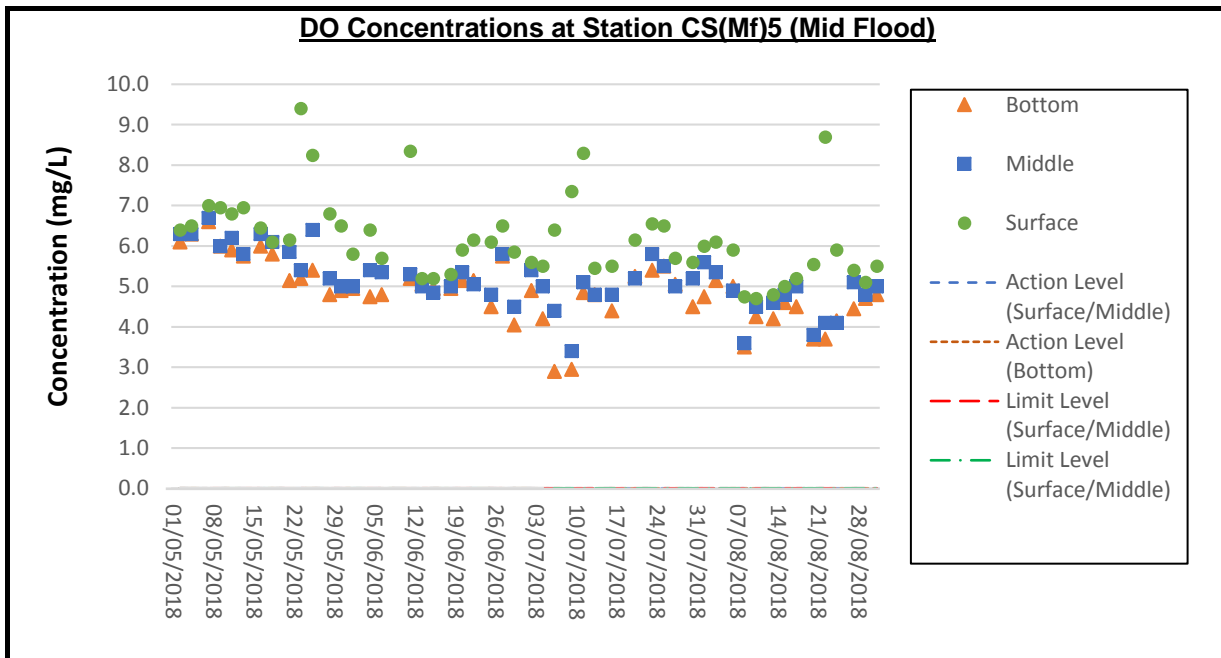
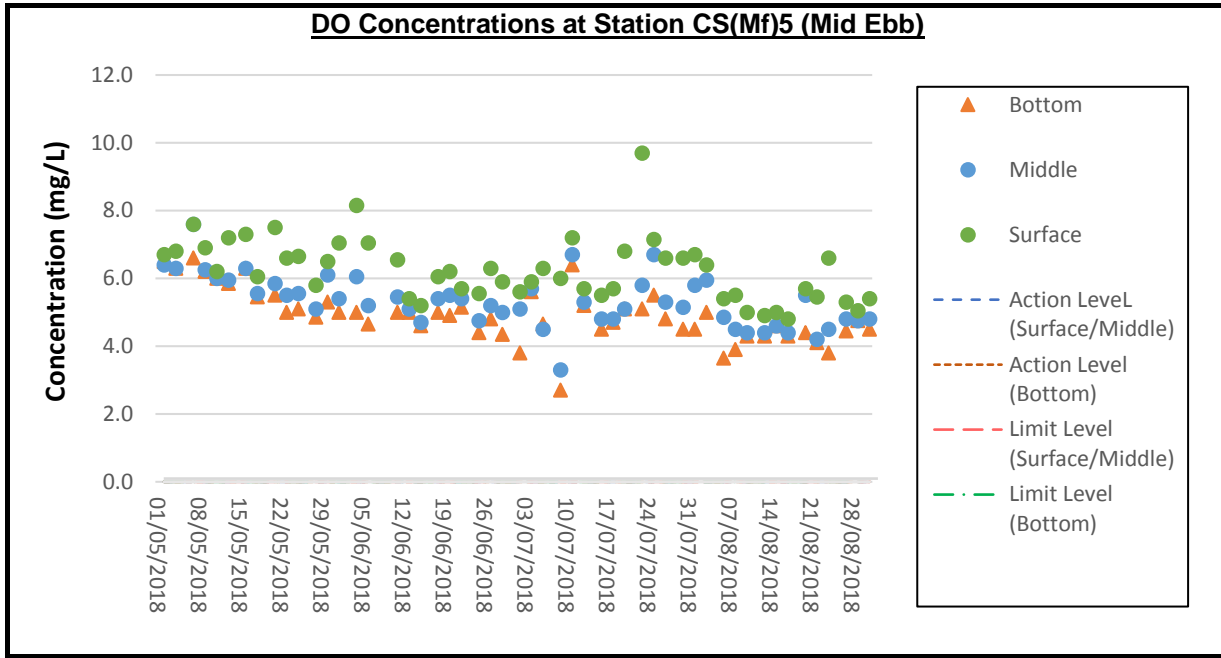


DO Concentrations at Station CS4 (Mid Ebb)

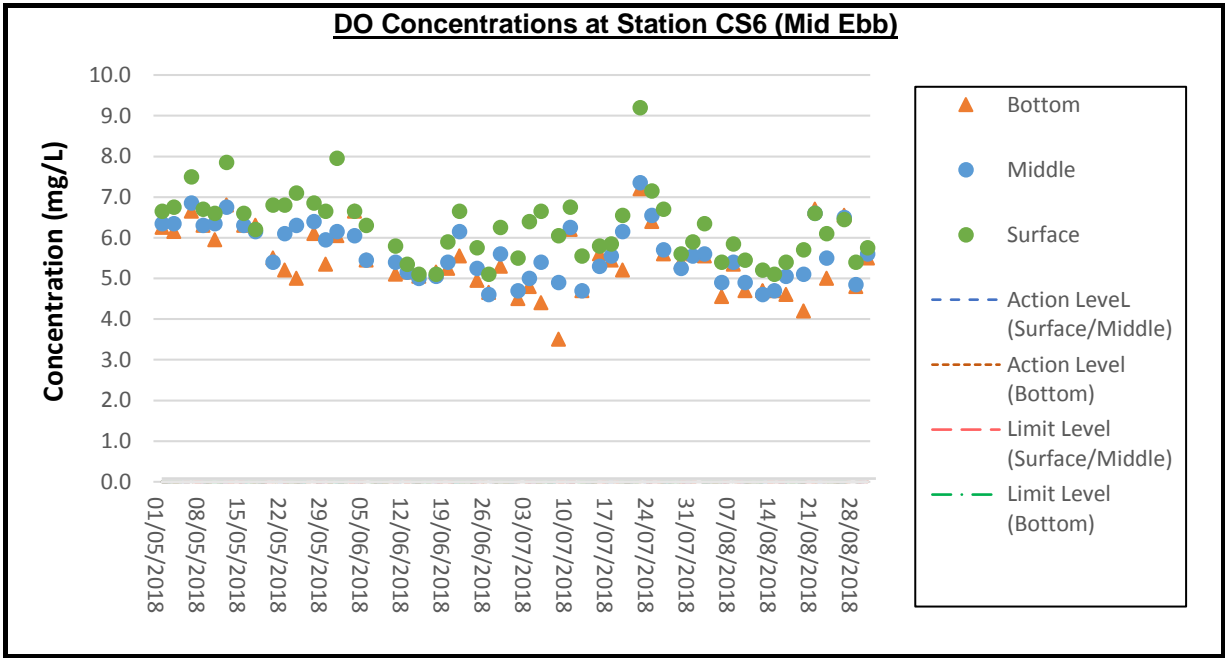


DO Concentrations at Station CS4 (Mid Flood)

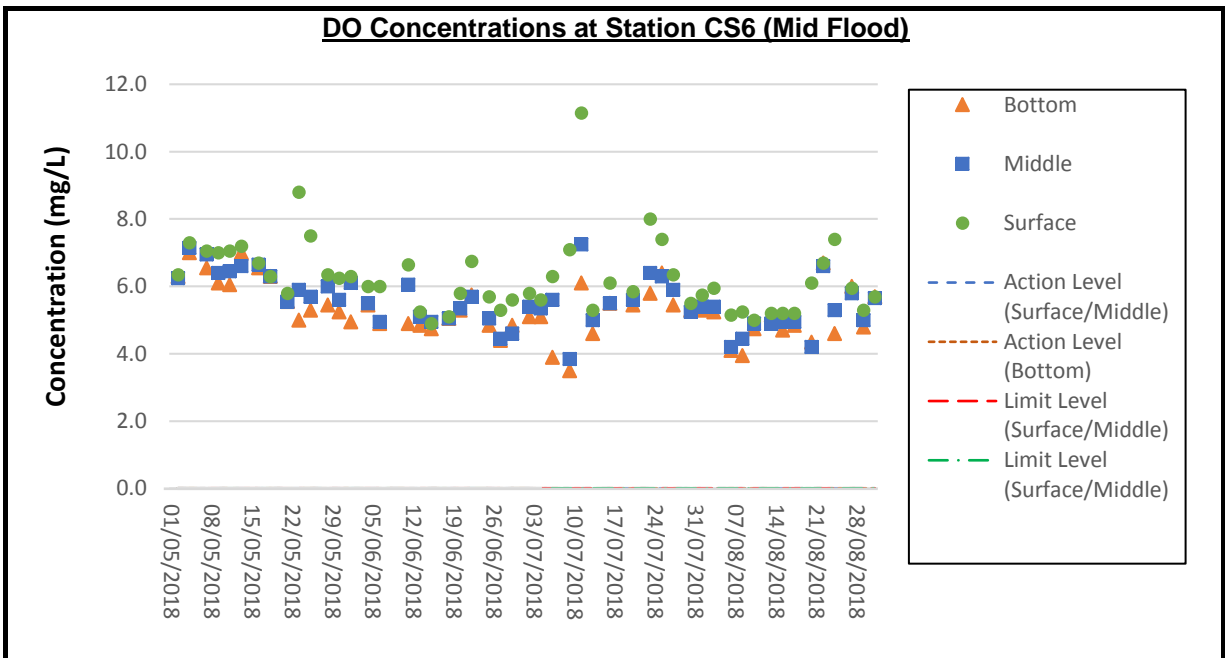




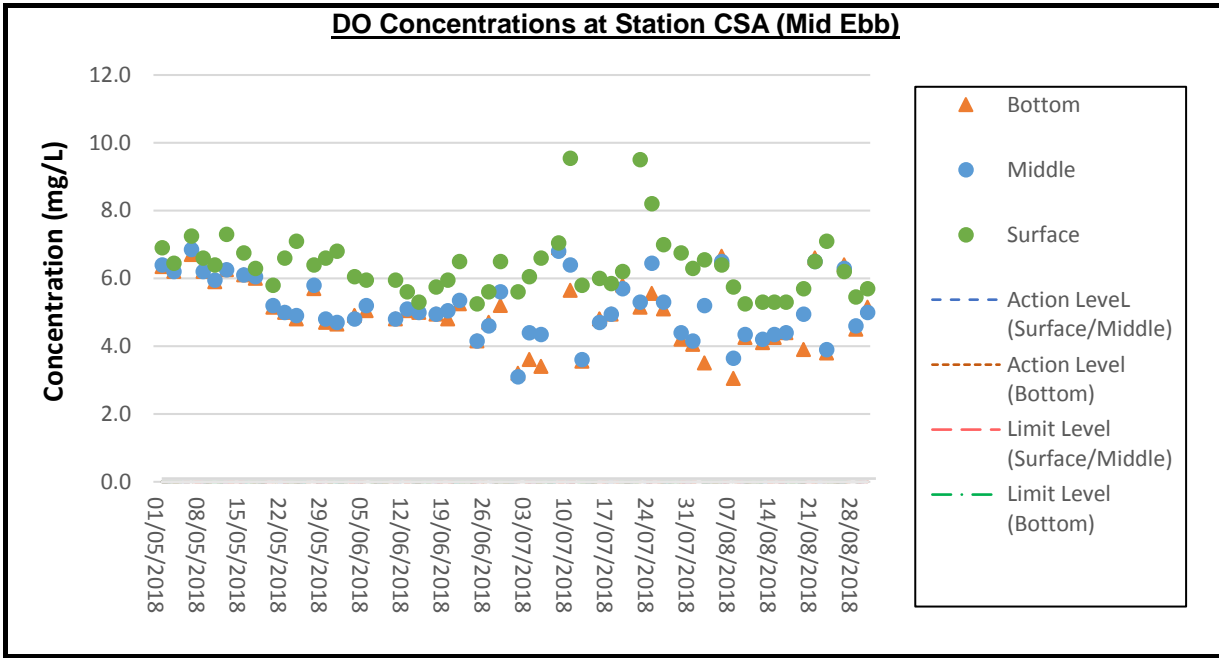
DO Concentrations at Station CS6 (Mid Ebb)



DO Concentrations at Station CS6 (Mid Flood)



DO Concentrations at Station CSA (Mid Ebb)



DO Concentrations at Station CSA (Mid Flood)

