

**CONTRACT NO. HY/2013/01**

**Hong Kong-Zhuhai-Macao Bridge Hong Kong Boundary Crossing Facilities – Dolphin Monthly Monitoring**

*Fourth Quarterly Progress Report (June-August 2018)  
submitted to Leighton – Chun Wo Joint Venture*

Submitted by

Samuel K.Y. Hung, Ph.D., Hong Kong Cetacean Research Project

September 21, 2018

**1. Introduction**

- 1.1. For the Hong Kong-Zhuhai-Macao Bridge (HZMB) Hong Kong Boundary Crossing Facilities (HKBCF), the construction of the Passenger Clearance Building (PCB) requires the contractor (i.e. Leighton – Chun Wo Joint Venture) and the associated environmental team to conduct monthly line-transect vessel surveys for the Chinese White Dolphins to cover the Northwest (NWL) and Northeast Lantau (NEL) survey areas under the Environmental Monitoring and Audit (EM&A) programme.
- 1.2. In August 2017, Hong Kong Cetacean Research Project (HKCRP) has been commissioned by the contractor to conduct regular dolphin monitoring study in order to collect data on Chinese White Dolphins during the construction phase (i.e. impact period) of the HKBCF-PCB project, and to analyze the collected survey data to monitor distribution, encounter rate, activities and occurrence of dolphin calves. Photo-identification will also be collected from individual Chinese White Dolphins to examine their individual ranging patterns.
- 1.3. From the monitoring results, any changes in dolphin occurrence within the study area will be examined for possible causes, and appropriate actions and additional mitigation measures will be recommended as necessary.
- 1.4. This report is the fourth quarterly progress report under the HKBCF construction phase dolphin monitoring programme submitted to Leighton – Chun Wo Joint Venture, summarizing the results of the surveys findings during the period of June to August 2018.

## 2. Monitoring Methodology

### 2.1. Vessel-based Line-transect Survey

2.1.1. According to the requirement of the updated EM&A manual, dolphin monitoring programme should cover all transect lines in NEL and NWL survey areas (see Figure 1) twice per month throughout the entire construction period. The co-ordinates of all transect lines are shown in Table 1.

Table 1 Co-ordinates of transect lines

Line No.		Easting	Northing		Line No.		Easting	Northing
1	Start Point	804671	815456		13	Start Point	816506	819480
1	End Point	804671	831404		13	End Point	816506	824859
2	Start Point	805476	820800		14	Start Point	817537	820220
2	End Point	805476	826654		14	End Point	817537	824613
3	Start Point	806464	821150		15	Start Point	818568	820735
3	End Point	806464	822911		15	End Point	818568	824433
4	Start Point	807518	821500		16	Start Point	819532	821420
4	End Point	807518	829230		16	End Point	819532	824209
5	Start Point	808504	821850		17	Start Point	820451	822125
5	End Point	808504	828602		17	End Point	820451	823671
6	Start Point	809490	822150		18	Start Point	821504	822371
6	End Point	809490	825352		18	End Point	821504	823761
7	Start Point	810499	822000		19	Start Point	822513	823268
7	End Point	810499	824613		19	End Point	822513	824321
8	Start Point	811508	821123		20	Start Point	823477	823402
8	End Point	811508	824254		20	End Point	823477	824613
9	Start Point	812516	821303		21	Start Point	805476	827081
9	End Point	812516	824254		21	End Point	805476	830562
10	Start Point	813525	821176		22	Start Point	806464	824033

10	End Point	813525	824657		22	End Point	806464	829598
11	Start Point	814556	818853		23	Start Point	814559	821739
11	End Point	814556	820992		23	End Point	814559	824768
12	Start Point	815542	818807		24	Start Point	805476	815900
12	End Point	815542	824882		24	End Point	805476	819100

- 2.1.2. The survey team used standard line-transect methods (Buckland et al. 2001) to conduct the systematic vessel surveys, and followed the same technique of data collection that has been adopted over the last 20 years of marine mammal monitoring surveys in Hong Kong developed by HKCRP (see Hung 2018). For each monitoring vessel survey, a 15-m inboard vessel with an open upper deck (about 4.5 m above water surface) was used to make observations from the flying bridge area.
- 2.1.3. Two experienced observers (a data recorder and a primary observer) made up the on-effort survey team, and the survey vessel transited different transect lines at a constant speed of 13-15 km per hour. The data recorder searched with unaided eyes and filled out the datasheets, while the primary observer searched for dolphins and porpoises continuously through 7 x 50 *Fujinon* marine binoculars. Both observers searched the sea ahead of the vessel, between 270° and 90° (in relation to the bow, which is defined as 0°). One to two additional experienced observers were available on the boat to work in shift (i.e. rotate every 30 minutes) in order to minimize fatigue of the survey team members. All observers were experienced in small cetacean survey techniques and identifying local cetacean species.
- 2.1.4. During on-effort survey periods, the survey team recorded effort data including time, position (latitude and longitude), weather conditions (Beaufort sea state and visibility), and distance traveled in each series (a continuous period of search effort) with the assistance of a handheld GPS (*Garmin eTrex Legend*).
- 2.1.5. Data including time, position and vessel speed were also automatically and continuously logged by handheld GPS throughout the entire survey for subsequent review.
- 2.1.6. When dolphins were sighted, the survey team would end the survey effort, and immediately record the initial sighting distance and angle of the dolphin group from the survey vessel, as well as the sighting time and position. Then the research vessel was diverted from its course to approach the animals for species identification, group size estimation, assessment of group composition, and behavioural observations. The

perpendicular distance (PSD) of the dolphin group to the transect line was later calculated from the initial sighting distance and angle.

- 2.1.7. Survey effort being conducted along the parallel transect lines that were perpendicular to the coastlines (as indicated in Figure 1) was labeled as “primary” survey effort, while the survey effort conducted along the connecting lines between parallel lines was labeled as “secondary” survey effort. According to HKCRP long-term dolphin monitoring data, encounter rates of Chinese white dolphins deduced from effort and sighting data collected along primary and secondary lines were similar in NEL and NWL survey areas. Therefore, both primary and secondary survey effort were presented as on-effort survey effort in this report.

## 2.2. *Photo-identification Work*

- 2.2.1. When a group of Chinese White Dolphins were sighted during the line-transect survey, the survey team would end effort and approach the group slowly from the side and behind to take photographs of them. Every attempt was made to photograph every dolphin in the group, and even photograph both sides of the dolphins, since the colouration and markings on both sides may not be symmetrical.
- 2.2.2. One to two professional digital cameras (*Canon* EOS 7D model), each equipped with long telephoto lenses (100-400 mm zoom), were available on board for researchers to take sharp, close-up photographs of dolphins as they surfaced. The images were shot at the highest available resolution and stored on Compact Flash memory cards for downloading onto a computer.
- 2.2.3. All digital images taken in the field were first examined, and those containing potentially identifiable individuals were sorted out. These photographs would then be examined in greater detail, and were carefully compared to the existing Chinese White Dolphin photo-identification catalogue maintained by HKCRP since 1995.
- 2.2.4. Chinese White Dolphins can be identified by their natural markings, such as nicks, cuts, scars and deformities on their dorsal fin and body, and their unique spotting patterns were also used as secondary identifying features (Jefferson 2000).
- 2.2.5. All photographs of each individual were then compiled and arranged in chronological order, with data including the date and location first identified (initial sighting), re-sightings, associated dolphins, distinctive features, and age classes entered into a computer database.

### 2.3. Data analysis

2.3.1. Distribution Analysis – The line-transect survey data was integrated with the Geographic Information System (GIS) in order to visualize and interpret different spatial and temporal patterns of dolphin distribution using sighting positions. Location data of dolphin groups were plotted on map layers of Hong Kong using a desktop GIS (ArcView<sup>®</sup> 3.1) to examine their distribution patterns in details. The dataset was also stratified into different subsets to examine distribution patterns of dolphin groups with different categories of group sizes, young calves and activities.

2.3.2. Encounter rate analysis – Encounter rates of Chinese white dolphins (number of on-effort sightings per 100 km of survey effort, and total number of dolphins sighted on-effort per 100 km of survey effort) were calculated in NEL and NWL survey areas in relation to the amount of survey effort conducted during each month of monitoring survey. Dolphin encounter rates were calculated in two ways for comparisons with the HZMB baseline monitoring results as well as to AFCD long-term marine mammal monitoring results.

Firstly, for the comparison with the HZMB baseline monitoring results, the encounter rates were calculated using primary survey effort alone, and only data collected under Beaufort 3 or below condition would be used for encounter rate analysis. The average encounter rate of sightings (STG) and average encounter rate of dolphins (ANI) were deduced based on the encounter rates from six events during the present quarter (i.e. six sets of line-transect surveys in North Lantau), which was also compared with the one deduced from the six events during the baseline period (i.e. six sets of line-transect surveys in North Lantau).

Secondly, the encounter rates were calculated using both primary and secondary survey effort collected under Beaufort 3 or below condition as in AFCD long-term monitoring study. The encounter rate of sightings and dolphins were deduced by dividing the total number of on-effort sightings (STG) and total number of dolphins (ANI) by the amount of survey effort for the present quarterly period.

2.3.3. Quantitative grid analysis on habitat use – To conduct quantitative grid analysis of habitat use, positions of on-effort sightings of Chinese White Dolphins collected during the quarterly impact phase monitoring period were plotted onto 1-km<sup>2</sup> grids among NWL and NEL survey areas on GIS. Sighting densities (number of on-effort sightings per km<sup>2</sup>) and dolphin densities (total number of dolphins from on-effort sightings per km<sup>2</sup>) were then calculated for each 1 km by 1 km grid with the aid of GIS.

Sighting density grids and dolphin density grids were then further normalized with the amount of survey effort conducted within each grid. The total amount of survey effort spent on each grid was calculated by examining the survey coverage on each line-transect survey to determine how many times the grid was surveyed during the study period. For example, when the survey boat traversed through a specific grid 50 times, 50 units of survey effort were counted for that grid. With the amount of survey effort calculated for each grid, the sighting density and dolphin density of each grid were then normalized (i.e. divided by the unit of survey effort).

The newly-derived unit for sighting density was termed SPSE, representing the number of on-effort sightings per 100 units of survey effort. In addition, the derived unit for actual dolphin density was termed DPSE, representing the number of dolphins per 100 units of survey effort. Among the 1-km<sup>2</sup> grids that were partially covered by land, the percentage of sea area was calculated using GIS tools, and their SPSE and DPSE values were adjusted accordingly. The following formulae were used to estimate SPSE and DPSE in each 1-km<sup>2</sup> grid within the study area:

$$SPSE = ((S / E) \times 100) / SA\%$$

$$DPSE = ((D / E) \times 100) / SA\%$$

where S = total number of on-effort sightings  
D = total number of dolphins from on-effort sightings  
E = total number of units of survey effort  
SA% = percentage of sea area

- 2.3.4. Behavioural analysis – When dolphins were sighted during vessel surveys, their behaviour was observed. Different activities were categorized (i.e. feeding, milling/resting, traveling, socializing) and recorded on sighting datasheets. This data was then input into a separate database with sighting information, which can be used to determine the distribution of behavioural data with a desktop GIS. Distribution of sightings of dolphins engaged in different activities and behaviours would then be plotted on GIS and carefully examined to identify important areas for different activities of the dolphins.
- 2.3.5. Ranging pattern analysis – Location data of individual dolphins that occurred during the 3-month impact phase monitoring period were obtained from the dolphin sighting database and photo-identification catalogue. To deduce home ranges for individual dolphins using the fixed kernel methods, the program Animal Movement Analyst Extension, was loaded as an extension with ArcView<sup>®</sup> 3.1 along with another extension

Spatial Analyst 2.0. Using the fixed kernel method, the program calculated kernel density estimates based on all sighting positions, and provided an active interface to display kernel density plots. The kernel estimator then calculated and displayed the overall ranging area at 95% UD level.

### 3. Monitoring Results

#### 3.1. *Summary of survey effort and dolphin sightings*

- 3.1.1. During the period of June to August 2018, six sets of systematic line-transect vessel surveys were conducted for the HKBCF project to cover all transect lines in NWL and NEL survey areas twice per month.
- 3.1.2. From these surveys, a total of 790.66 km of survey effort was collected, with 97.6% of the total survey effort being conducted under favourable weather conditions (i.e. Beaufort Sea State 3 or below with good visibility). Among the two areas, 293.40 km and 497.26 km of survey effort were conducted in NEL and NWL survey areas respectively.
- 3.1.3. The total survey effort conducted on primary lines was 572.04 km, while the effort on secondary lines was 218.62 km. Survey effort conducted on both primary and secondary lines were considered as on-effort survey data. A summary table of the survey effort is shown in Appendix I.
- 3.1.4. During the six sets of monitoring surveys in June to August 2018, seven groups of 16 Chinese White Dolphins were sighted, with the summary table of the dolphin sightings shown in Appendix II. All except one dolphin sighting were made during on-effort search, while all six on-effort dolphin sightings were made on primary lines. In addition, all dolphin groups were sighted in NWL, while none was sighted in NEL.

#### 3.2. *Distribution*

- 3.2.1. Distribution of dolphin sightings made during monitoring surveys in June to August 2018 is shown in Figure 1. Four sightings were made to the northeast and northwest of Lung Kwu Chau, while another two sightings were made adjacent to the HKLR09 alignment (Figure 1). One sighting was also made between Sha Chau and Lung Kwu Chau. On the contrary, they were completely absent from the central and eastern portions of North Lantau waters (Figure 1), which was consistent with the findings of HKLR03 monitoring surveys in recent years.
- 3.2.2. Notably, all dolphin sightings were made far away from the HKBCF and HKLR03

reclamation sites, as well as the alignment of Tuen Mun-Chek Lap Kok Link (TMCLKL) (Figure 1).

3.2.3. Sighting distribution of dolphins during the present impact phase monitoring period (June to August 2018) was very different from the one during the baseline monitoring period (Figure 1). In the present quarter, dolphins have disappeared from the NEL region, which was in stark contrast to their frequent occurrence around the Brothers Islands, near Shum Shui Kok and in the vicinity of HKBCF reclamation site during the baseline period (Figure 1).

3.2.4. On the other hand, dolphin occurrence in NWL waters was also noticeably different between the baseline and impact phase periods. During the present impact monitoring period, dolphins were infrequently sighted there, and mainly at the western end of the survey area, which was also in stark contrast with their frequent occurrences throughout the entire survey area during the baseline period (Figure 1).

### 3.3. *Encounter rate*

3.3.1. During the present three-month study period, the encounter rates of Chinese White Dolphins deduced from the survey effort and on-effort sighting data from the primary transect lines under favourable conditions (Beaufort 3 or below) for each set of the surveys in NEL and NWL are shown in Table 2. The average encounter rates deduced from the six sets of surveys were also compared with the ones deduced from the baseline monitoring period (September – November 2011) (Table 3).

3.3.2. To facilitate the comparison with the AFCD long-term monitoring results, the encounter rates were also calculated for the present quarter using both primary and secondary survey effort. The encounter rates of sightings (STG) and dolphins (ANI) in NWL were 1.04 sightings and 2.50 dolphins per 100 km of survey effort respectively, while the encounter rates of sightings (STG) and dolphins (ANI) in NEL were both nil for this quarter.



Table 2. Dolphin encounter rates (sightings per 100 km of survey effort) during June – August 2018

SURVEY AREA	DOLPHIN MONITORING DATES	Encounter rate (STG) (no. of on-effort dolphin sightings per 100 km of survey effort)	Encounter rate (ANI) (no. of dolphins from all on-effort sightings per 100 km of survey effort)
		Primary Lines Only	Primary Lines Only
Northeast Lantau	Set 1 (12 & 14 Jun 2018)	0.00	0.00
	Set 2 (21 & 25 Jun 2018)	0.00	0.00
	Set 3 (5 & 16 Jul 2018)	0.00	0.00
	Set 4 (23 & 24 Jul 2018)	0.00	0.00
	Set 5 (7 & 16 Aug 2018)	0.00	0.00
	Set 6 (20 & 27 Aug 2018)	0.00	0.00
Northwest Lantau	Set 1 (12 & 14 Jun 2018)	1.63	1.63
	Set 2 (21 & 25 Jun 2018)	0.00	0.00
	Set 3 (5 & 16 Jul 2018)	1.78	1.78
	Set 4 (23 & 24 Jul 2018)	2.01	10.05
	Set 5 (7 & 16 Aug 2018)	3.46	8.66
	Set 6 (20 & 27 Aug 2018)	0.00	0.00

Table 3. Comparison of average dolphin encounter rates from impact monitoring period (June – August 2018) and baseline monitoring period (September – November 2011) (Note: encounter rates deduced from the baseline monitoring period have been recalculated based only on survey effort and on-effort sighting data made along the primary transect lines under favourable conditions; ± denotes the standard deviation of the average encounter rates)

	Encounter rate (STG) (no. of on-effort dolphin sightings per 100 km of survey effort)		Encounter rate (ANI) (no. of dolphins from all on-effort sightings per 100 km of survey effort)	
	June – August 2018	September – November 2011	June – August 2018	September – November 2011
Northeast Lantau	0.00	6.00 ± 5.05	0.00	22.19 ± 26.81
Northwest Lantau	1.48 ± 1.32	9.85 ± 5.85	3.69 ± 4.48	44.66 ± 29.85

3.3.3. In NEL, the average dolphin encounter rates (both STG and ANI) in the present

three-month impact monitoring period were both zero with no on-effort sighting being made, and such extremely low occurrence of dolphins in NEL have also been consistently recorded in recent years of HZMB monitoring (Table 4).

Table 4. Comparison of average dolphin encounter rates in Northeast Lantau survey area from the same summer quarters of HKLR03 and HKBCF impact monitoring periods and baseline monitoring period (September-November 2011) (Note: encounter rates deduced from the baseline monitoring period have been recalculated based only on survey effort and on-effort sighting data made along the primary transect lines under favourable conditions;  $\pm$  denotes the standard deviation of the average encounter rates)

	<b>Encounter rate (STG)</b> (no. of on-effort dolphin sightings per 100 km of survey effort)	<b>Encounter rate (ANI)</b> (no. of dolphins from all on-effort sightings per 100 km of survey effort)
<b>September-November 2011 (Baseline)</b>	<b>6.00 <math>\pm</math> 5.05</b>	<b>22.19 <math>\pm</math> 26.81</b>
June-August 2013 (HKLR03 Impact)	0.42 $\pm$ 1.03	0.42 $\pm$ 1.03
June-August 2014 (HKLR03 Impact)	0.00	0.00
June-August 2015 (HKLR03 Impact)	0.00	0.00
June-August 2016 (HKLR03 Impact)	0.00	0.00
June-August 2017 (HKLR03 Impact)	0.00	0.00
June-August 2018 (HKBCF Impact)	0.00	0.00

- 3.3.4. On the other hand, the average dolphin encounter rates (STG and ANI) in NWL during the present impact phase monitoring period (reductions of 85.0% and 91.7% respectively) were tiny fractions of the ones recorded during the three-month baseline period, indicating a noticeable decline in dolphin usage of this survey area during the present impact phase period (Table 5).
- 3.3.5. During the same summer quarters (with comparison to past HKLR03 monitoring data), dolphin encounter rates in NWL during summer 2018 was lower than all summer periods in 2013-17, and the decline was becoming more apparent in the past four summer periods (Table 5). Such temporal trend should be closely monitored in the upcoming monitoring quarters to determine whether there is any recovery in dolphin occurrence as marine construction activities of HKBCF works will be mostly completed in coming months.

Table 5. Comparison of average dolphin encounter rates in Northwest Lantau survey area from all summer quarters of HKLR03 and HKBCF impact monitoring periods and baseline monitoring period (September-November 2011) (Note: encounter rates deduced from the baseline monitoring period have been recalculated based only on survey effort and on-effort sighting data made along the primary transect lines under favourable conditions;  $\pm$  denotes the standard deviation of the average encounter rates)

	<b>Encounter rate (STG)</b> (no. of on-effort dolphin sightings per 100 km of survey effort)	<b>Encounter rate (ANI)</b> (no. of dolphins from all on-effort sightings per 100 km of survey effort)
<b>September-November 2011 (Baseline)</b>	<b>9.85 <math>\pm</math> 5.85</b>	<b>44.66 <math>\pm</math> 29.85</b>
June-August 2013 (HKLR03 Impact)	6.56 $\pm$ 3.68	27.00 $\pm$ 18.71
June-August 2014 (HKLR03 Impact)	4.74 $\pm$ 3.84	17.52 $\pm$ 15.12
June-August 2015 (HKLR03 Impact)	2.53 $\pm$ 3.20	9.21 $\pm$ 11.57
June-August 2016 (HKLR03 Impact)	1.72 $\pm$ 2.17	7.48 $\pm$ 10.98
June-August 2017 (HKLR03 Impact)	2.20 $\pm$ 2.88	6.58 $\pm$ 8.12
June-August 2018 (HKBCF Impact)	1.48 $\pm$ 1.32	3.69 $\pm$ 4.48

- 3.3.6. A two-way ANOVA with repeated measures and unequal sample size was conducted to examine whether there were any significant differences in the average encounter rates between the baseline and impact monitoring periods. The two variables that were examined included the two periods (baseline and impact phases) and two locations (NEL and NWL).
- 3.3.7. For the comparison between the baseline period and the present quarter, the p-values for the differences in average dolphin encounter rates of STG and ANI were 0.0025 and 0.0155 respectively. If the alpha value is set at 0.05, significant differences were detected between the baseline and present quarter in both the average dolphin encounter rates of STG and ANI.
- 3.3.8. As indicated in both dolphin distribution patterns and encounter rates, dolphin usage has been significantly reduced in both NEL and NWL survey areas during the present quarterly period, and such low occurrence of dolphins has also been consistently documented in past HZMB dolphin monitoring studies.
- 3.3.9. The decline in dolphin usage of North Lantau region raises serious concern, as the timing of the decline in dolphin usage in North Lantau waters coincided well with the construction schedule of the HZMB-related projects (Hung 2018). Apparently there was no sign of recovery of dolphin usage even though most of the marine works associated

with the HZMB construction have been completed, and therefore continuous dolphin monitoring would remain critical in coming quarters to detect any sign of recovery.

### 3.4. *Group size*

3.4.1. Group size of Chinese White Dolphins ranged from one to five individuals per group in North Lantau region during June to August 2018. The average dolphin group sizes from these three months were compared with the ones deduced from the baseline period in September to November 2011, as shown in Table 6.

Table 6. Comparison of average dolphin group sizes from impact monitoring period (June-August 2018) and baseline monitoring period (September-November 2011) (Note:  $\pm$  denotes the standard deviation of average group size)

	Average Dolphin Group Size	
	June – August 2018	September – November 2011
<b>Overall</b>	2.29 $\pm$ 1.38 (n = 7)	3.72 $\pm$ 3.13 (n = 66)
<b>Northeast Lantau</b>	---	3.18 $\pm$ 2.16 (n = 17)
<b>Northwest Lantau</b>	2.29 $\pm$ 1.38 (n = 7)	3.92 $\pm$ 3.40 (n = 49)

3.4.2. The average dolphin group size in NWL waters during June to August 2018 was considerably lower than the one recorded during the three-month baseline period, but it should also be noted that the sample size of seven dolphin groups in the present quarter was much smaller when compared to the 66 groups sighted during the baseline period (Table 6).

3.4.3. Notably, all except one dolphin groups were composed of 1-3 individuals only, while only one group was medium in size with five animals (Appendix II).

3.4.4. This larger group with five animals was sighted near the HKLR09 alignment at the southwest corner of NWL survey area (Figure 2). This is in contrary to the baseline period, when the larger dolphin groups (5 animals or more per group) were frequently sighted and evenly distributed in NWL waters, with a few also sighted in NEL waters.

### 3.5. *Habitat use*

3.5.1. From June to August 2018, only six grids recorded dolphin presence during on-effort search in North Lantau waters. Moreover, just two of the six grids recorded moderate to moderately high dolphin densities, and both grids overlapped with the HKLR09 alignment at the southwest corner of NWL waters (Figures 3a and 3b). The four grids near Lung Kwu Chau only recorded low to very low dolphin densities.

- 3.5.2. However, it should be emphasized that the amount of survey effort collected in each grid during the three-month period was fairly low (6-12 units of survey effort for most grids), and therefore the habitat use pattern derived from the three-month dataset should be treated with caution. A more complete picture of dolphin habitat use pattern should be examined when more survey effort for each grid will be collected throughout the impact phase monitoring programme.
- 3.5.3. When compared with the habitat use patterns during the baseline period, dolphin usage in NEL and NWL has drastically diminished in both areas during the present impact monitoring period (Figure 4). During the baseline period, many grids between Siu Mo To and Shum Shui Kok in NEL recorded moderately high to high dolphin densities, which was in stark contrast to the complete absence of dolphins there during the present impact phase period (Figure 4).
- 3.5.4. The density patterns were also very different in NWL between the baseline and impact phase monitoring periods, with high dolphin usage throughout the area during the baseline period. In contrast, only two grids with moderate to moderately high dolphin densities were located at the southwest corner of NWL waters near Shum Wat during the present impact phase period (Figure 4).
- 3.6. *Mother-calf pairs*
- 3.6.1. During the present quarterly period, no mother-calf was spotted among the eight groups of dolphins.
- 3.7. *Activities and associations with fishing boat*
- 3.7.1. During the present quarterly period, none of the seven dolphin groups was engaged in feeding, socializing, traveling or milling/resting activity. Moreover, none of the groups was associated with any operating fishing boat.
- 3.8. *Summary of photo-identification works*
- 3.8.1. From June to August 2018, nearly 500 digital photographs of Chinese White Dolphins were taken during the impact phase monitoring surveys for the photo-identification work.
- 3.8.2. In total, nine individuals sighted 10 times altogether were identified (see summary table in Appendix III and photographs of identified individuals in Appendix IV). All re-sightings of individual dolphins were made in NWL, while none was re-sighted in NEL during the quarterly period.
- 3.8.3. Among the nine individuals, eight of them were re-sighted only once, while there was

only one individual (NL182) that was re-sighted twice during the three-month period (Appendix III).

3.8.4. Notably, three of these nine individuals (i.e. CH34, NL202 and NL317) were also sighted in NWL survey area during the HKLR03 monitoring surveys conducted concurrently in the same three-month period. Moreover, four individuals (CH113, NL317, WL207 and WL251) were also sighted in West Lantau waters during the HKLR09 monitoring surveys from the same quarterly period.

### 3.9. *Individual range use*

3.9.1. Ranging patterns of the nine individuals identified during the three-month study period were determined by fixed kernel method, and are shown in Appendix V.

3.9.2. All identified dolphins sighted in the present quarter were utilizing NWL waters only, while none of them occurred in NEL waters (Appendix V). This is in contrary to the extensive movements of many individual dolphins between NEL and NWL survey areas as observed in the earlier impact monitoring quarters as well as the baseline period.

3.9.3. Moreover, all identified individuals that primarily centered their range use in North Lantau waters were still sighted within their normal ranges during the present quarterly period. On the other hand, in contrary to previous monitoring quarters, none of the individuals that consistently utilized WL waters in the past have extended their range use to NWL waters during the present quarter.

3.9.4. In the upcoming quarters, individual range use and movements should be continuously monitored to examine whether there has been any consistent shifts of individual home ranges from North Lantau to West or Southwest Lantau, or vice versa.

## 4. Conclusion

4.1. During the present quarter of dolphin monitoring, no adverse impact from the activities of this construction project on Chinese White Dolphins was noticeable from general observations.

4.2. Although dolphins seldom occurred in the area of HKBCF construction in the past and during the baseline monitoring period, it is apparent that dolphin usage has been dramatically reduced in North Lantau waters in recent years, and many individuals have shifted away from this once-important habitat for the dolphins.

- 4.3. It is critical to continuously monitor the dolphin usage in North Lantau region in the upcoming quarters, to determine whether the dolphins are continuously affected by the various construction activities in relation to the HZMB-related works, and whether there is any sign of recovery when the construction works have been completed.

## 5. References

Buckland, S. T., Anderson, D. R., Burnham, K. P., Laake, J. L., Borchers, D. L., and Thomas, L. 2001. Introduction to distance sampling: estimating abundance of biological populations. Oxford University Press, London.

Hung, S. K. 2018. Monitoring of Marine Mammals in Hong Kong waters: final report (2017-18). An unpublished report submitted to the Agriculture, Fisheries and Conservation Department, 174 pp.

Jefferson, T. A. 2000. Population biology of the Indo-Pacific hump-backed dolphin in Hong Kong waters. Wildlife Monographs 144:1-65.

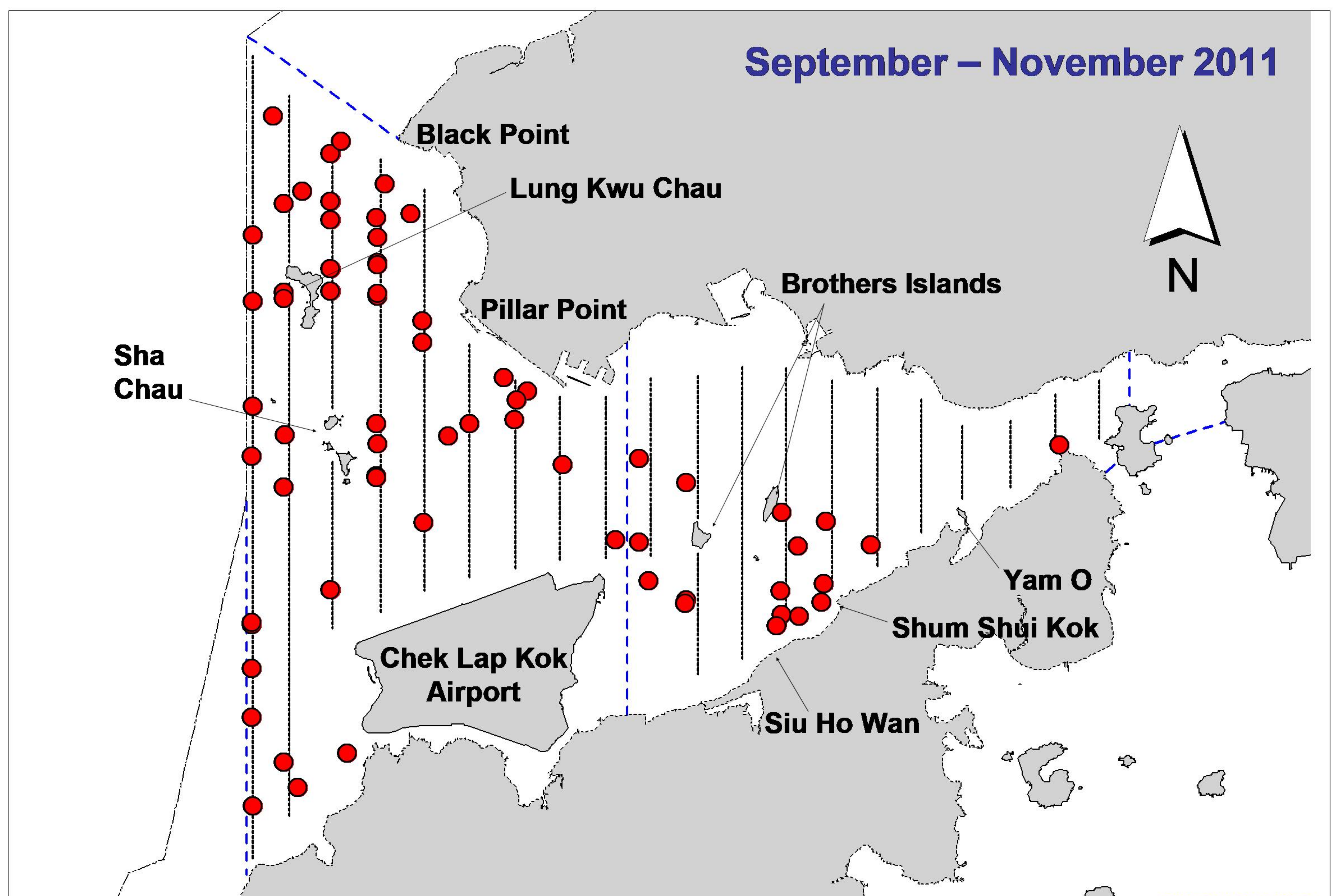
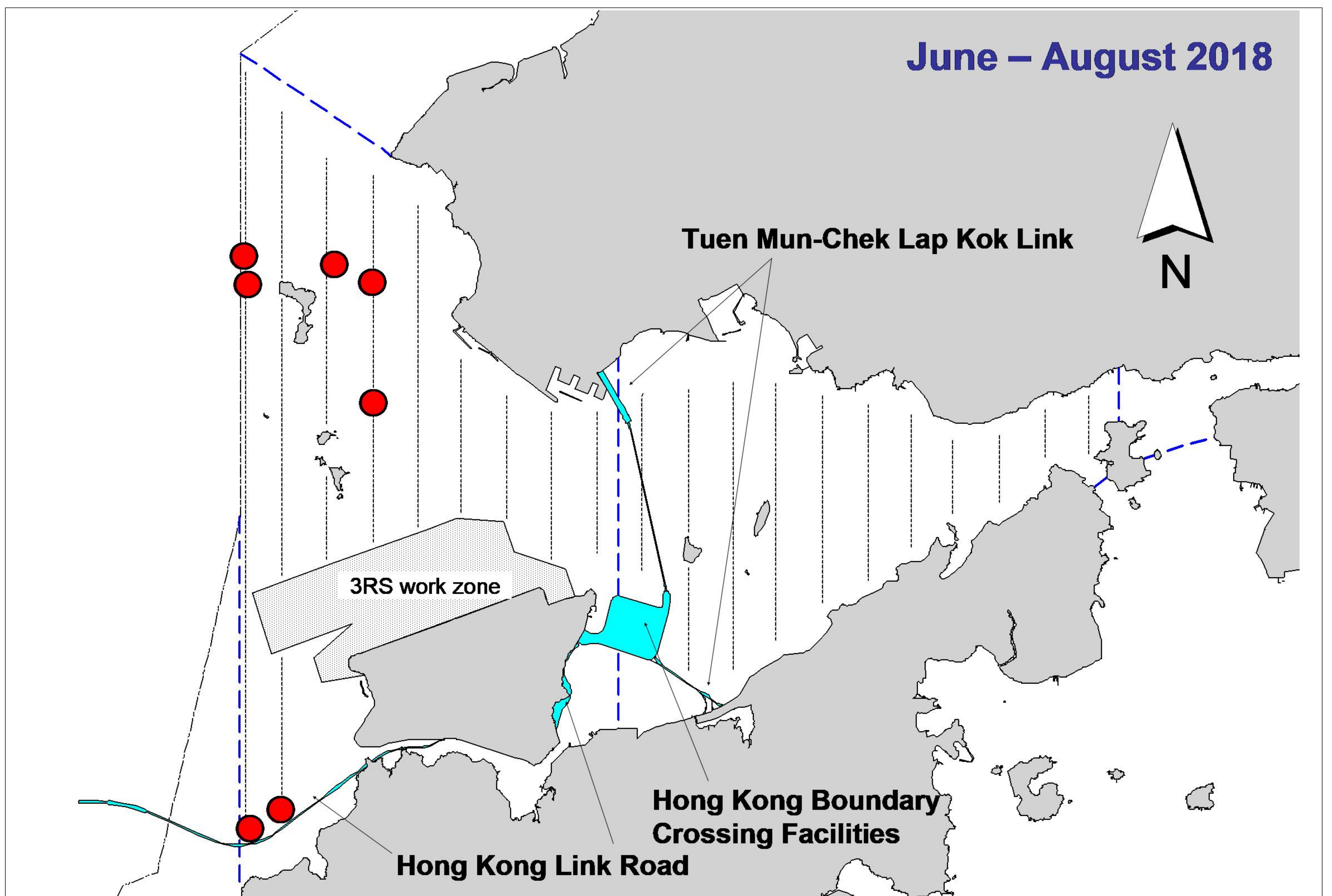


Figure 1. Distribution of Chinese white dolphin sighting in Northwest and Northeast Lantau during HKBCF impact phase (top) and baseline monitoring surveys (bottom)



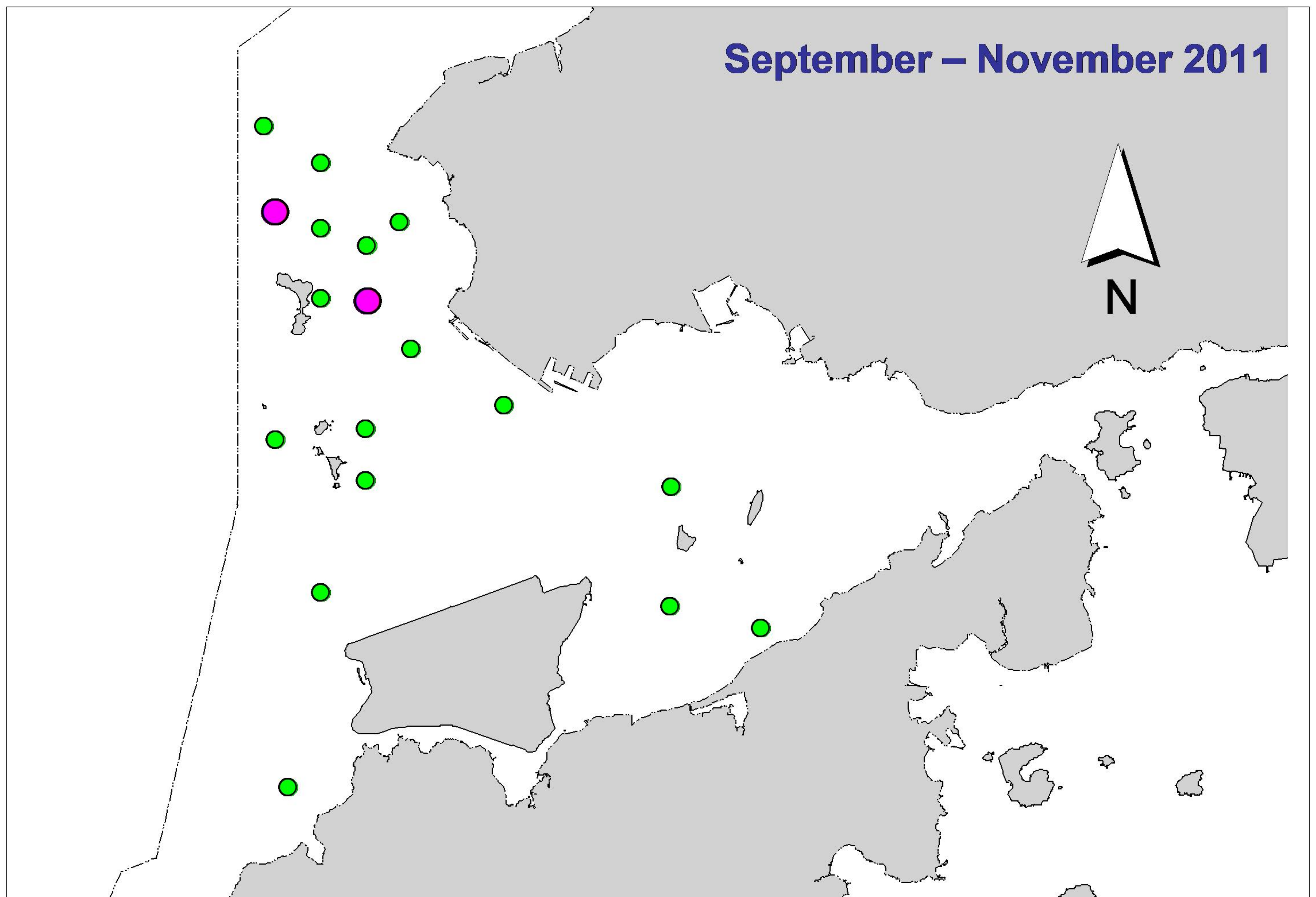
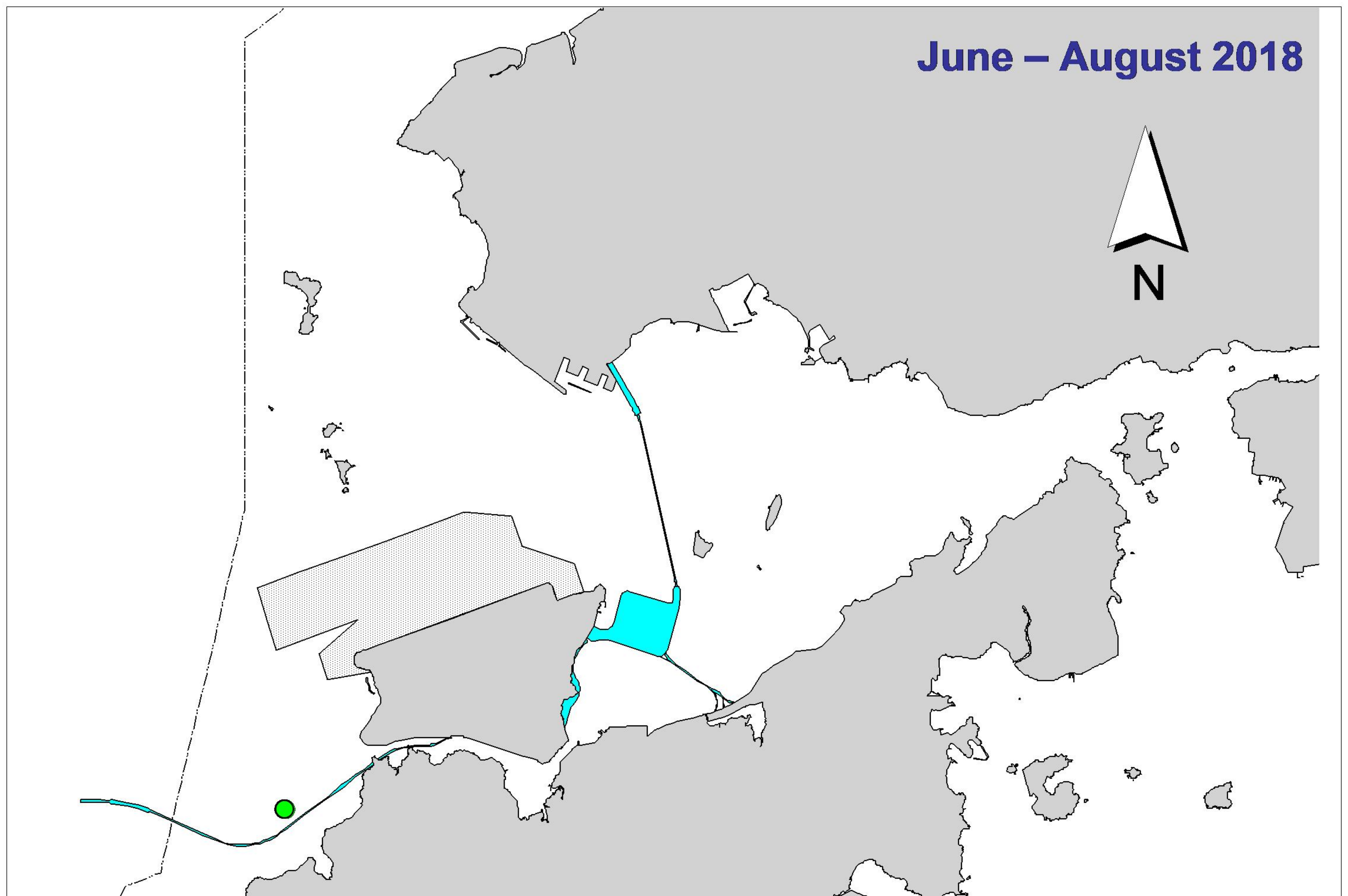


Figure 2. Distribution of Chinese white dolphins with larger group sizes during HKBCF impact phase (top) and baseline monitoring surveys (bottom) (green dots: group sizes of 5 or more; purple dots: group sizes of 10 or more)

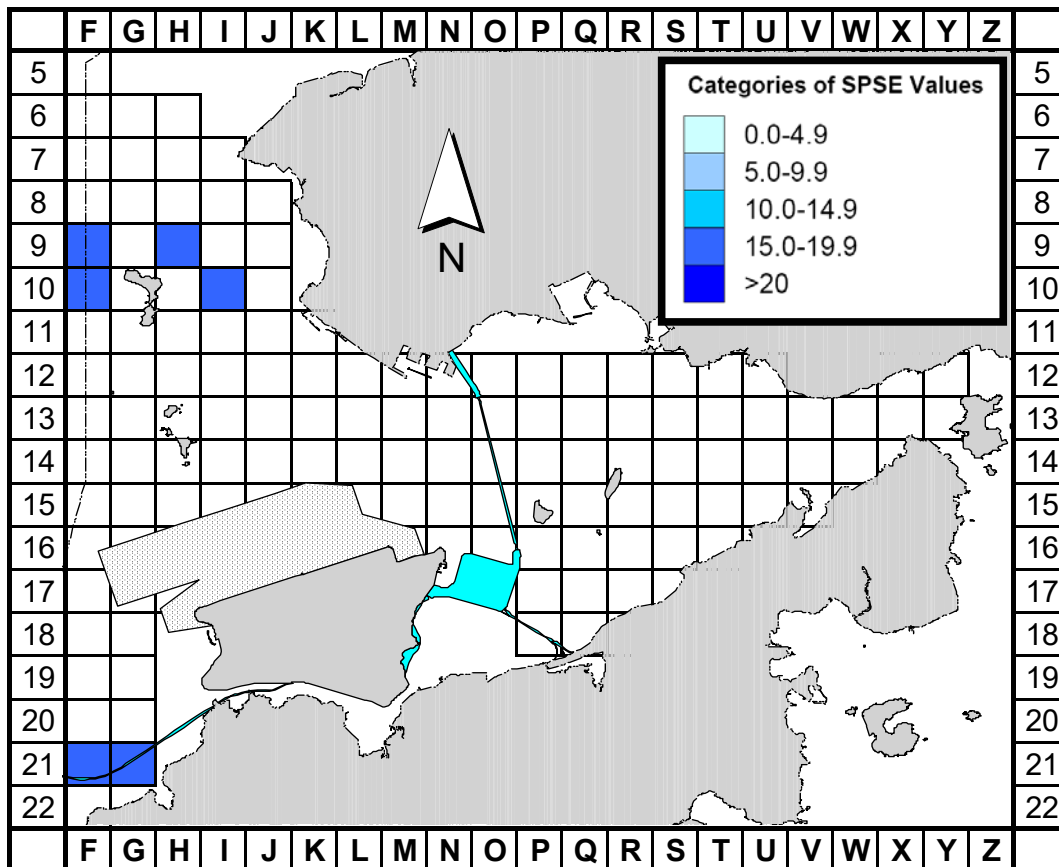


Figure 3a. Sighting density of Chinese white dolphins with corrected survey effort per km<sup>2</sup> in Northeast and Northwest Lantau survey areas, using data collected during HKBCF impact monitoring period (June-August 18) (SPSE = no. of on-effort sightings per 100 units of survey effort)

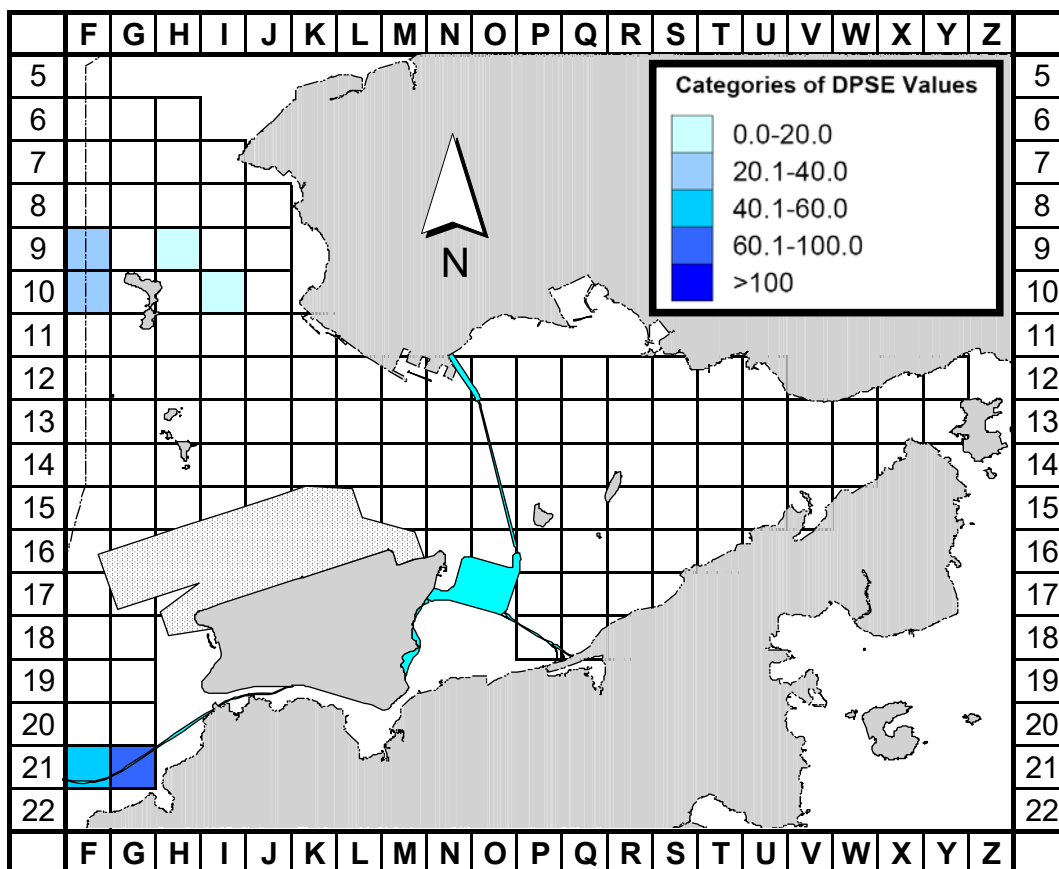


Figure 3b. Density of Chinese white dolphins with corrected survey effort per km<sup>2</sup> in Northeast and Northwest Lantau survey areas, using data collected during HKBCF impact monitoring period (June-August 18) (DPSE = no. of dolphins per 100 units of survey effort)

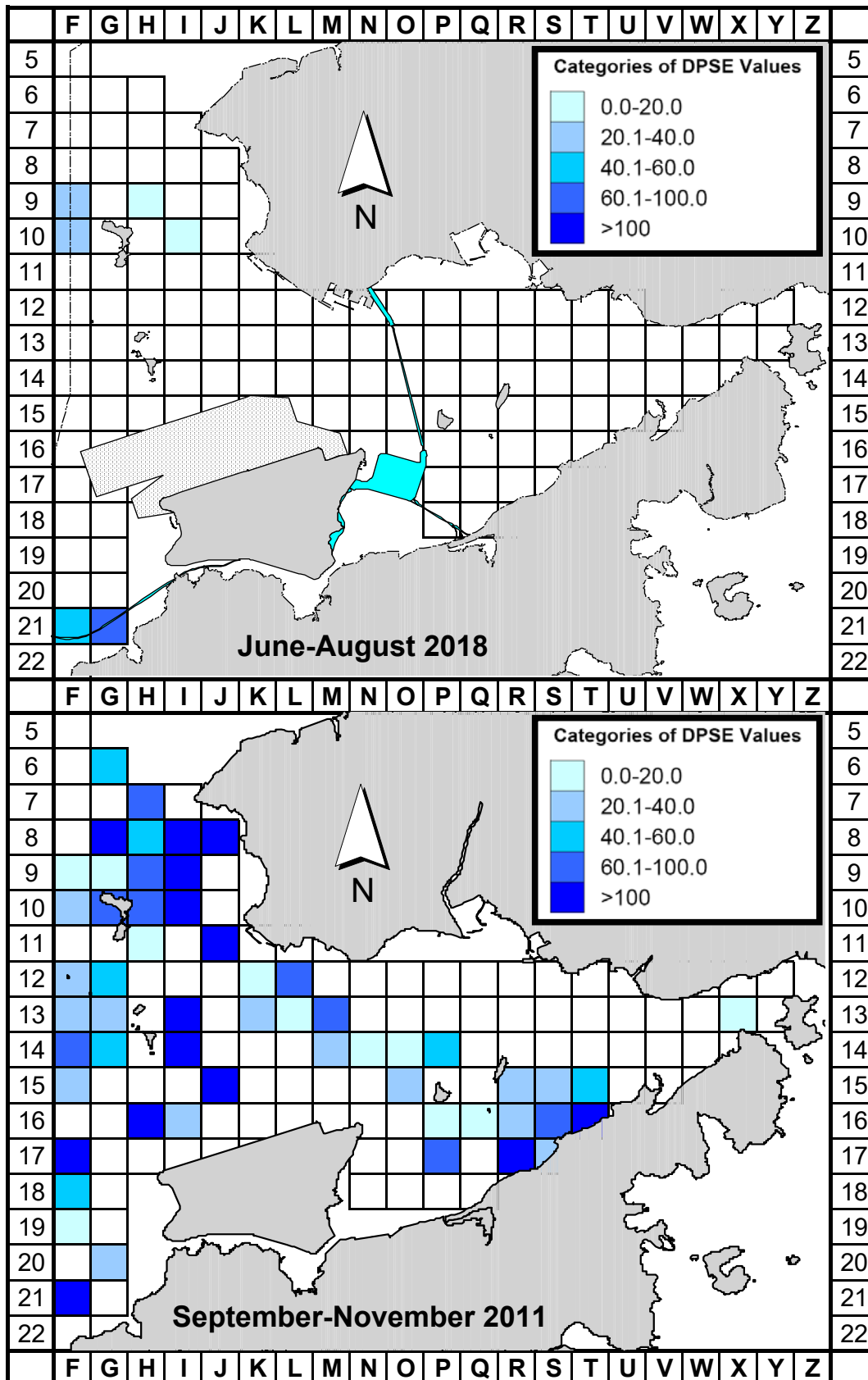


Figure 4. Comparison of density of Chinese white dolphins with corrected survey effort per km<sup>2</sup> in Northwest and Northeast Lantau survey area between the HKBCF impact monitoring period (June-August 2018) and baseline monitoring period (September-November 2011) (DPSE = no. of dolphins per 100 units of survey effort)

## Appendix I. HKBCF Survey Effort Database (June-August 2018)

(Abbreviations: BEAU = Beaufort Sea State; P = Primary Line Effort; S = Secondary Line Effort)

DATE	AREA	BEAU	EFFORT	SEASON	VESSEL	TYPE	P/S
12-Jun-18	NW LANTAU	2	28.60	SUMMER	STANDARD36826	HKBCF	P
12-Jun-18	NW LANTAU	3	20.84	SUMMER	STANDARD36826	HKBCF	P
12-Jun-18	NW LANTAU	2	12.10	SUMMER	STANDARD36826	HKBCF	S
12-Jun-18	NW LANTAU	3	6.76	SUMMER	STANDARD36826	HKBCF	S
12-Jun-18	NE LANTAU	2	0.50	SUMMER	STANDARD36826	HKBCF	P
12-Jun-18	NE LANTAU	3	8.19	SUMMER	STANDARD36826	HKBCF	P
12-Jun-18	NE LANTAU	4	1.09	SUMMER	STANDARD36826	HKBCF	P
12-Jun-18	NE LANTAU	3	2.02	SUMMER	STANDARD36826	HKBCF	S
14-Jun-18	NE LANTAU	2	26.79	SUMMER	STANDARD36826	HKBCF	P
14-Jun-18	NE LANTAU	3	0.30	SUMMER	STANDARD36826	HKBCF	P
14-Jun-18	NE LANTAU	2	10.21	SUMMER	STANDARD36826	HKBCF	S
14-Jun-18	NE LANTAU	3	1.30	SUMMER	STANDARD36826	HKBCF	S
14-Jun-18	NW LANTAU	2	11.97	SUMMER	STANDARD36826	HKBCF	P
14-Jun-18	NW LANTAU	2	4.23	SUMMER	STANDARD36826	HKBCF	S
21-Jun-18	NW LANTAU	2	4.87	SUMMER	STANDARD36826	HKBCF	P
21-Jun-18	NW LANTAU	3	24.28	SUMMER	STANDARD36826	HKBCF	P
21-Jun-18	NW LANTAU	4	3.96	SUMMER	STANDARD36826	HKBCF	P
21-Jun-18	NW LANTAU	2	4.71	SUMMER	STANDARD36826	HKBCF	S
21-Jun-18	NW LANTAU	3	5.78	SUMMER	STANDARD36826	HKBCF	S
25-Jun-18	NW LANTAU	2	10.49	SUMMER	STANDARD36826	HKBCF	P
25-Jun-18	NW LANTAU	3	16.55	SUMMER	STANDARD36826	HKBCF	P
25-Jun-18	NW LANTAU	2	9.26	SUMMER	STANDARD36826	HKBCF	S
25-Jun-18	NW LANTAU	3	3.40	SUMMER	STANDARD36826	HKBCF	S
25-Jun-18	NE LANTAU	2	16.32	SUMMER	STANDARD36826	HKBCF	P
25-Jun-18	NE LANTAU	3	19.97	SUMMER	STANDARD36826	HKBCF	P
25-Jun-18	NE LANTAU	2	7.37	SUMMER	STANDARD36826	HKBCF	S
25-Jun-18	NE LANTAU	3	6.74	SUMMER	STANDARD36826	HKBCF	S
5-Jul-18	NW LANTAU	3	24.87	SUMMER	STANDARD36826	HKBCF	P
5-Jul-18	NW LANTAU	4	1.12	SUMMER	STANDARD36826	HKBCF	P
5-Jul-18	NW LANTAU	3	9.83	SUMMER	STANDARD36826	HKBCF	S
5-Jul-18	NW LANTAU	4	2.48	SUMMER	STANDARD36826	HKBCF	S
5-Jul-18	NE LANTAU	2	12.90	SUMMER	STANDARD36826	HKBCF	P
5-Jul-18	NE LANTAU	3	22.18	SUMMER	STANDARD36826	HKBCF	P
5-Jul-18	NE LANTAU	2	9.02	SUMMER	STANDARD36826	HKBCF	S
5-Jul-18	NE LANTAU	3	2.60	SUMMER	STANDARD36826	HKBCF	S
16-Jul-18	NW LANTAU	2	4.40	SUMMER	STANDARD36826	HKBCF	P
16-Jul-18	NW LANTAU	3	26.93	SUMMER	STANDARD36826	HKBCF	P
16-Jul-18	NW LANTAU	2	3.00	SUMMER	STANDARD36826	HKBCF	S
16-Jul-18	NW LANTAU	3	7.61	SUMMER	STANDARD36826	HKBCF	S
23-Jul-18	NW LANTAU	3	22.04	SUMMER	STANDARD36826	HKBCF	P
23-Jul-18	NW LANTAU	4	10.31	SUMMER	STANDARD36826	HKBCF	P
23-Jul-18	NW LANTAU	2	3.37	SUMMER	STANDARD36826	HKBCF	S
23-Jul-18	NW LANTAU	3	7.68	SUMMER	STANDARD36826	HKBCF	S
24-Jul-18	NW LANTAU	2	10.47	SUMMER	STANDARD36826	HKBCF	P
24-Jul-18	NW LANTAU	3	17.22	SUMMER	STANDARD36826	HKBCF	P
24-Jul-18	NW LANTAU	2	2.80	SUMMER	STANDARD36826	HKBCF	S
24-Jul-18	NW LANTAU	3	9.03	SUMMER	STANDARD36826	HKBCF	S
24-Jul-18	NE LANTAU	2	29.75	SUMMER	STANDARD36826	HKBCF	P
24-Jul-18	NE LANTAU	3	6.52	SUMMER	STANDARD36826	HKBCF	P
24-Jul-18	NE LANTAU	2	12.83	SUMMER	STANDARD36826	HKBCF	S
24-Jul-18	NE LANTAU	3	1.20	SUMMER	STANDARD36826	HKBCF	S

## Appendix I. (cont'd)

(Abbreviations: BEAU = Beaufort Sea State; P = Primary Line Effort; S = Secondary Line Effort)

DATE	AREA	BEAU	EFFORT	SEASON	VESSEL	TYPE	P/S
7-Aug-18	NW LANTAU	1	1.62	SUMMER	STANDARD36826	HKBCF	P
7-Aug-18	NW LANTAU	2	20.90	SUMMER	STANDARD36826	HKBCF	P
7-Aug-18	NW LANTAU	3	11.01	SUMMER	STANDARD36826	HKBCF	P
7-Aug-18	NW LANTAU	2	7.17	SUMMER	STANDARD36826	HKBCF	S
7-Aug-18	NW LANTAU	3	6.10	SUMMER	STANDARD36826	HKBCF	S
7-Aug-18	NE LANTAU	1	11.60	SUMMER	STANDARD36826	HKBCF	P
7-Aug-18	NE LANTAU	2	12.72	SUMMER	STANDARD36826	HKBCF	P
7-Aug-18	NE LANTAU	1	3.20	SUMMER	STANDARD36826	HKBCF	S
7-Aug-18	NE LANTAU	2	8.48	SUMMER	STANDARD36826	HKBCF	S
16-Aug-18	NW LANTAU	2	23.20	SUMMER	STANDARD36826	HKBCF	P
16-Aug-18	NW LANTAU	3	1.00	SUMMER	STANDARD36826	HKBCF	P
16-Aug-18	NW LANTAU	2	10.20	SUMMER	STANDARD36826	HKBCF	S
16-Aug-18	NE LANTAU	2	8.02	SUMMER	STANDARD36826	HKBCF	P
16-Aug-18	NE LANTAU	3	1.47	SUMMER	STANDARD36826	HKBCF	P
16-Aug-18	NE LANTAU	2	2.01	SUMMER	STANDARD36826	HKBCF	S
20-Aug-18	NW LANTAU	1	7.10	SUMMER	STANDARD36826	HKBCF	P
20-Aug-18	NW LANTAU	2	29.02	SUMMER	STANDARD36826	HKBCF	P
20-Aug-18	NW LANTAU	1	4.15	SUMMER	STANDARD36826	HKBCF	S
20-Aug-18	NW LANTAU	2	9.43	SUMMER	STANDARD36826	HKBCF	S
27-Aug-18	NW LANTAU	2	25.57	SUMMER	STANDARD36826	HKBCF	P
27-Aug-18	NW LANTAU	2	9.83	SUMMER	STANDARD36826	HKBCF	S
27-Aug-18	NE LANTAU	1	15.29	SUMMER	STANDARD36826	HKBCF	P
27-Aug-18	NE LANTAU	2	20.09	SUMMER	STANDARD36826	HKBCF	P
27-Aug-18	NE LANTAU	1	3.00	SUMMER	STANDARD36826	HKBCF	S
27-Aug-18	NE LANTAU	2	9.72	SUMMER	STANDARD36826	HKBCF	S

## Appendix II. HKBCF Chinese White Dolphin Sighting Database (June-August 2018)

(Abberviations: STG# = Sighting Number; HRD SZ = Dolphin Herd Size; BEAU = Beaufort Sea State; PSD = Perpendicular Distance; BOAT ASSOC. = Fishing Boat Association P/S: Sighting Made on Primary/Secondary Lines)

DATE	STG #	TIME	HRD SZ	AREA	BEAU	PSD	EFFORT	TYPE	NORTHING	EASTING	SEASON	BOAT ASSOC.	P/S
12-Jun-18	1	1416	1	NW LANTAU	2	336	ON	HKBCF	826981	807445	SUMMER	NONE	P
21-Jun-18	1	1217	2	NW LANTAU	4	155	ON	HKBCF	827540	804614	SUMMER	NONE	P
16-Jul-18	1	1134	1	NW LANTAU	3	158	ON	HKBCF	827348	806612	SUMMER	NONE	P
24-Jul-18	1	1016	5	NW LANTAU	2	551	ON	HKBCF	815911	805425	SUMMER	NONE	P
7-Aug-18	1	1010	3	NW LANTAU	2	273	ON	HKBCF	815514	804734	SUMMER	NONE	P
7-Aug-18	2	1126	2	NW LANTAU	2	396	ON	HKBCF	826953	804675	SUMMER	NONE	P
27-Aug-18	1	1142	2	NW LANTAU	2	ND	OFF	HKBCF	824467	807492	SUMMER	NONE	

**Appendix III. Individual dolphins identified during HKBCF monitoring surveys in June-August 2018**

<b>ID#</b>	<b>DATE</b>	<b>STG#</b>	<b>AREA</b>
CH34	21/06/18	1	NW LANTAU
CH113	24/07/18	1	NW LANTAU
NL182	21/06/18	1	NW LANTAU
	24/07/18	1	NW LANTAU
NL202	27/08/18	1	NW LANTAU
NL256	07/08/18	2	NW LANTAU
NL286	27/08/18	1	NW LANTAU
NL317	24/07/18	1	NW LANTAU
WL207	07/08/18	1	NW LANTAU
WL251	07/08/18	1	NW LANTAU

Appendix IV. Nine individual dolphins that were identified during June to August 2018 under HKBCF impact phase monitoring surveys





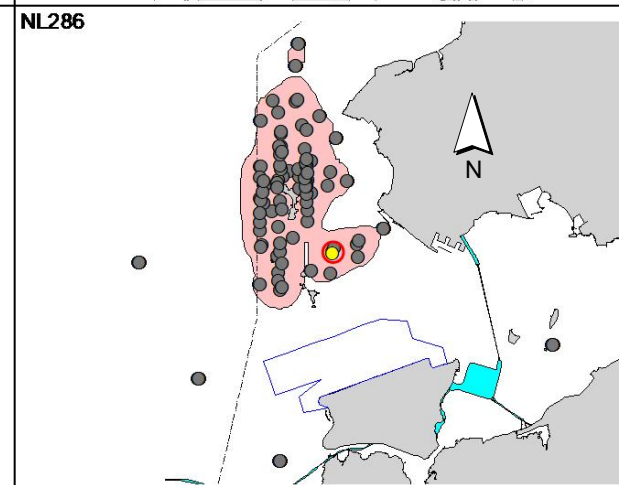
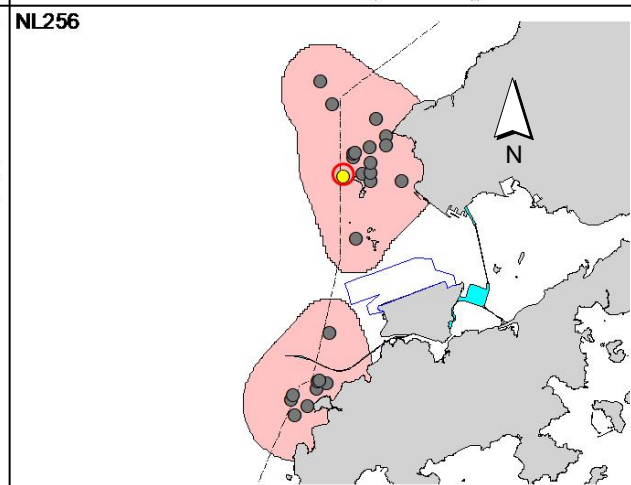
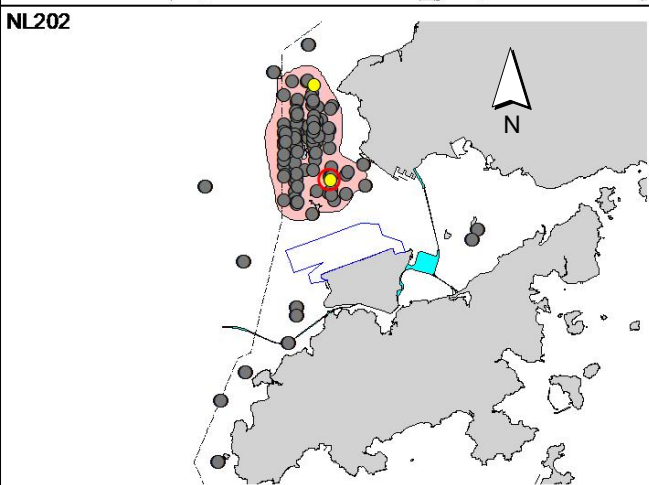
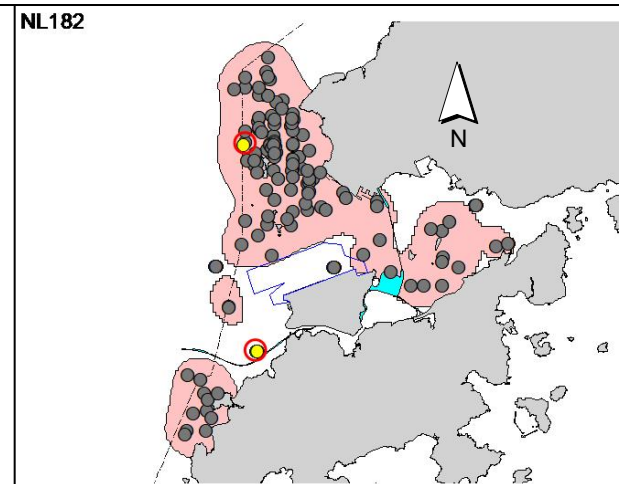
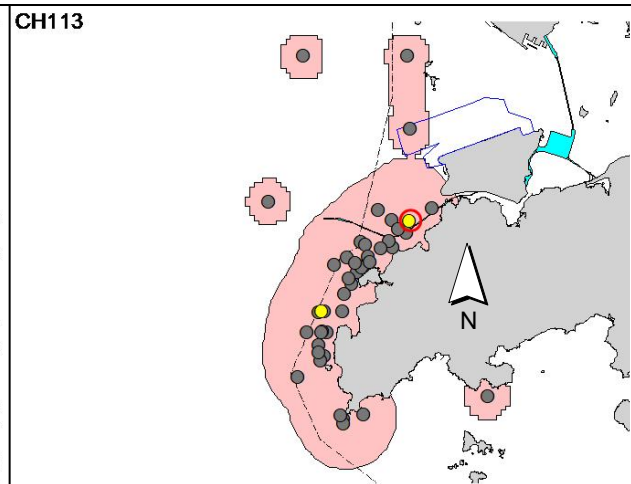
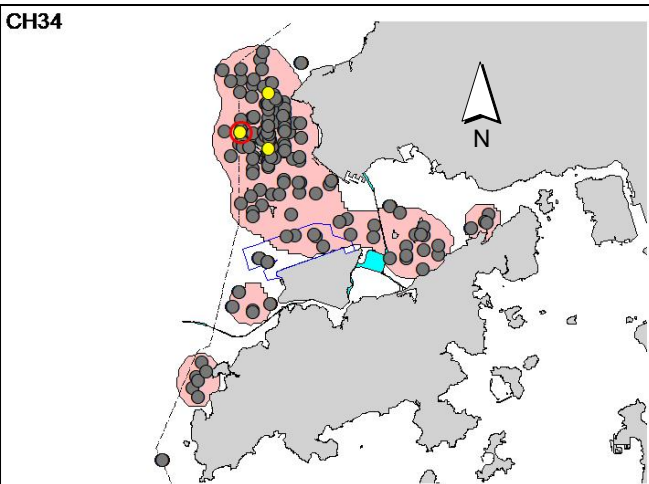
Appendix IV. (cont'd)



Appendix IV. (cont'd)



Appendix V. Ranging patterns (95% kernel ranges) of nine individual dolphins that were sighted during HKBCF impact phase monitoring period (note: yellow dots with red circles indicate sightings made in June-August 2018 during HKBCF monitoring surveys; other yellow dots indicate the ones made during HKLR03 & HKLR09 monitoring surveys)



Appendix V. (cont'd)

