

NOTES:

1. COORDINATES ARE RELATED TO HONG KONG METRIC BENCH MARK. IN ALL CASES, ANY CHANGE ARE IN METERS UNLESS OTHERWISE SHOWN.
2. THIS DRAWING SHALL BE USED IN CONSTRUCTION WITH DRAWING NO. 60191048/C2/000/1041.

LEGEND:

- SITE BOUNDARY
- ▨ WORKS AREA

DATE	DESCRIPTION	BY	CHECKED
2013.04.13	ISSUED FOR TENDER DRAWING	CHANG	CHANG

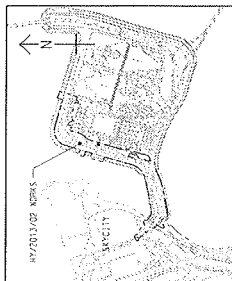
RAILWAYS DEPARTMENT
香港鐵路有限公司
 MTR Corporation Limited
 香港鐵路有限公司
 - INFRASTRUCTURE WORKS STAGE 1 (WESTERN PORTION)

SITE LOCATION PLAN

AECOM
 Rogers Stark Harbour + Partners
 BUREAU OF ARCHITECTURE
 ATKINS ADI

PROJECT NO. 60191048/C2/000/C00/1000
 DRAWING NO. 60191048/C2/000/1041
 DATE: 13 APR 2013
 SCALE: A1: 1:25000
 SHEET NO. 1 OF 1
 COPYRIGHT RESERVED





LEGEND:

- SITE BOUNDARY
- BRIDGE
- AT-GRADE ROAD

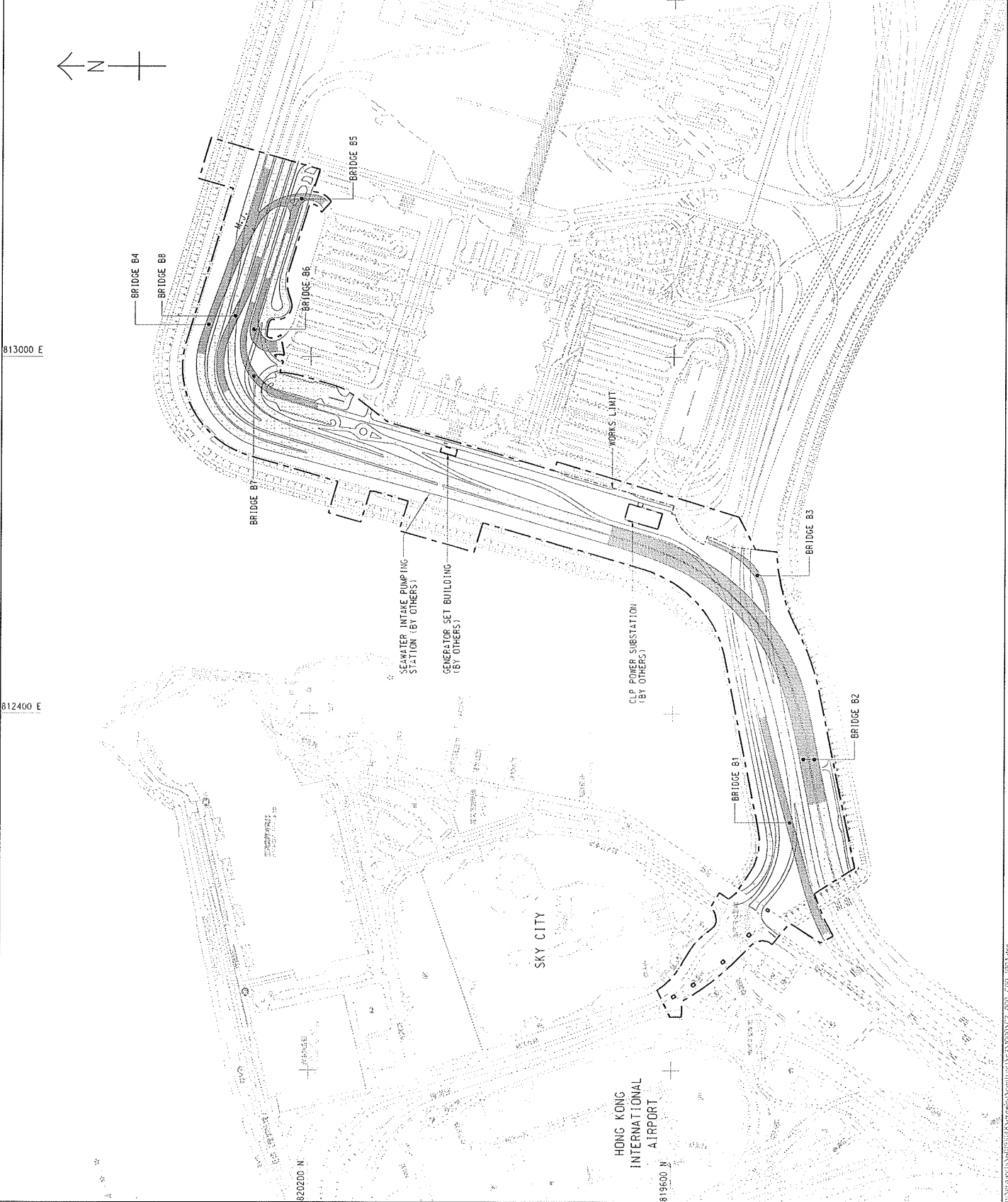
TEGEE DRAWING: 60191048/0013
 DATE: 07/2013
 DRAWN BY: [Name]
 CHECKED BY: [Name]

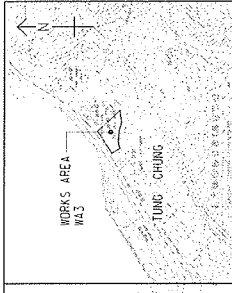
ROADWAYS DEPARTMENT
 運輸及交通局
 HONG KONG BRIDGE ENGINEERING OFFICE
 香港橋樑工程辦事處
 INFRASTRUCTURE WORKS STAGE 1 WESTERN PORTION

GENERAL ARRANGEMENT

AECOM
 Rogers Stirk Harbour + Partners
 BUREAU HAPPOLD ATKINS ADI

PROJECT NO.	60191048/C2/000/C00/1003
DATE	07/2013
SCALE	1:25000
DATE	07/2013
SCALE	1:25000
DATE	07/2013
SCALE	1:25000





LOCATION PLAN
SCALE: 1:1,000

NOTES:
1. COORDINATES ARE RELATED TO HONG KONG METRIC GRID (1980).
2. DIMENSIONS ARE IN MILLIMETRES AND DIMENSIONS ARE IN METRES UNLESS OTHERWISE SHOWN.

LEGEND:

- WORKS AREA BOUNDARY
- PORTION 3.1
- PORTION 3.2
- PORTION 3.3
- PORTION 3.4
- PORTION 3.5
- PORTION 3.6
- PORTION 3.7
- PORTION 3.8
- PORTION 3.9

NO.	DATE	REVISION
1	2011.11.14	ISSUE FOR TENDER DRAWING
2	2012.01.13	REVISION

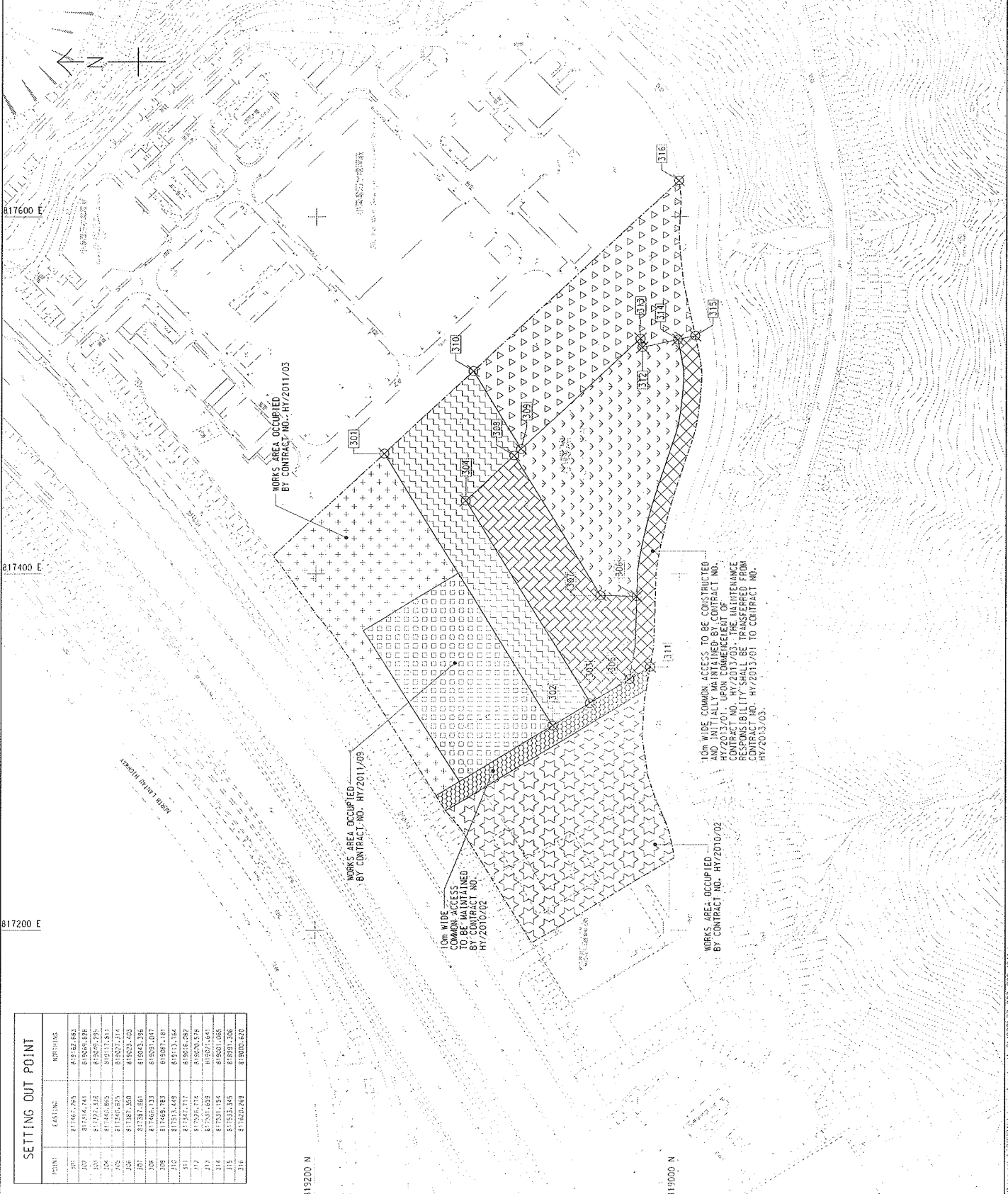
WORKS AREA WA3

AECOM
Rogers Strick Harbour + Partners
BURO HAPPOLD ATKINS ADI

Aedas

PROJECT NO: 60191048/C2/000/C00/1041
DRAWN BY: [Name]
CHECKED BY: [Name]
SCALE: 1:1,000
DATE: 2011.11.14

© COPYRIGHT RESERVED



SETTING OUT POINT

POINT	EASTING	NORTHING
301	817467.295	819582.683
302	817414.141	819580.428
303	817327.458	819595.293
304	817446.805	819117.851
305	817406.879	819227.314
306	817387.350	819223.403
307	817387.450	819243.336
308	817468.133	819381.047
309	817468.783	819387.181
310	817513.449	819113.764
311	817387.717	819306.289
312	817326.174	819304.838
313	817331.439	819271.047
314	817331.154	819301.008
315	817333.346	819291.208
316	817322.249	819300.620

10m WIDE COMMON ACCESS TO BE CONSTRUCTED AND INITIALLY MAINTAINED BY CONTRACT NO. HY/2013/01. UPON COMMENCEMENT OF CONTRACT NO. HY/2013/02 THE CONTRACTOR SHALL BE RESPONSIBLE FOR MAINTAINING THE ACCESS FROM CONTRACT NO. HY/2013/01 TO CONTRACT NO. HY/2013/03.

WORKS AREA OCCUPIED BY CONTRACT NO. HY/2010/02

WORKS AREA OCCUPIED BY CONTRACT NO. HY/2011/09

WORKS AREA OCCUPIED BY CONTRACT NO. HY/2011/03

10m WIDE COMMON ACCESS TO BE MAINTAINED BY CONTRACT NO. HY/2010/02