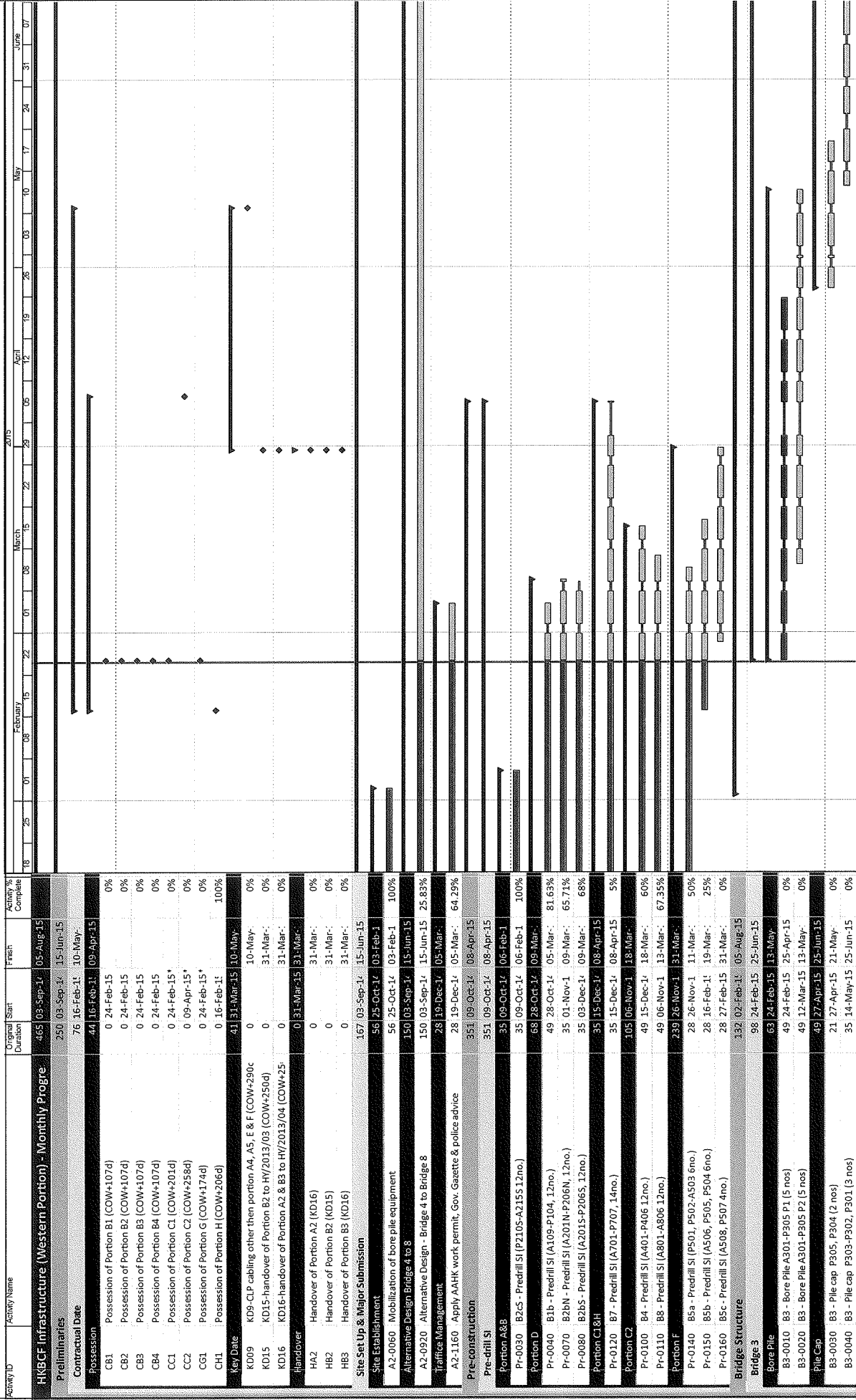


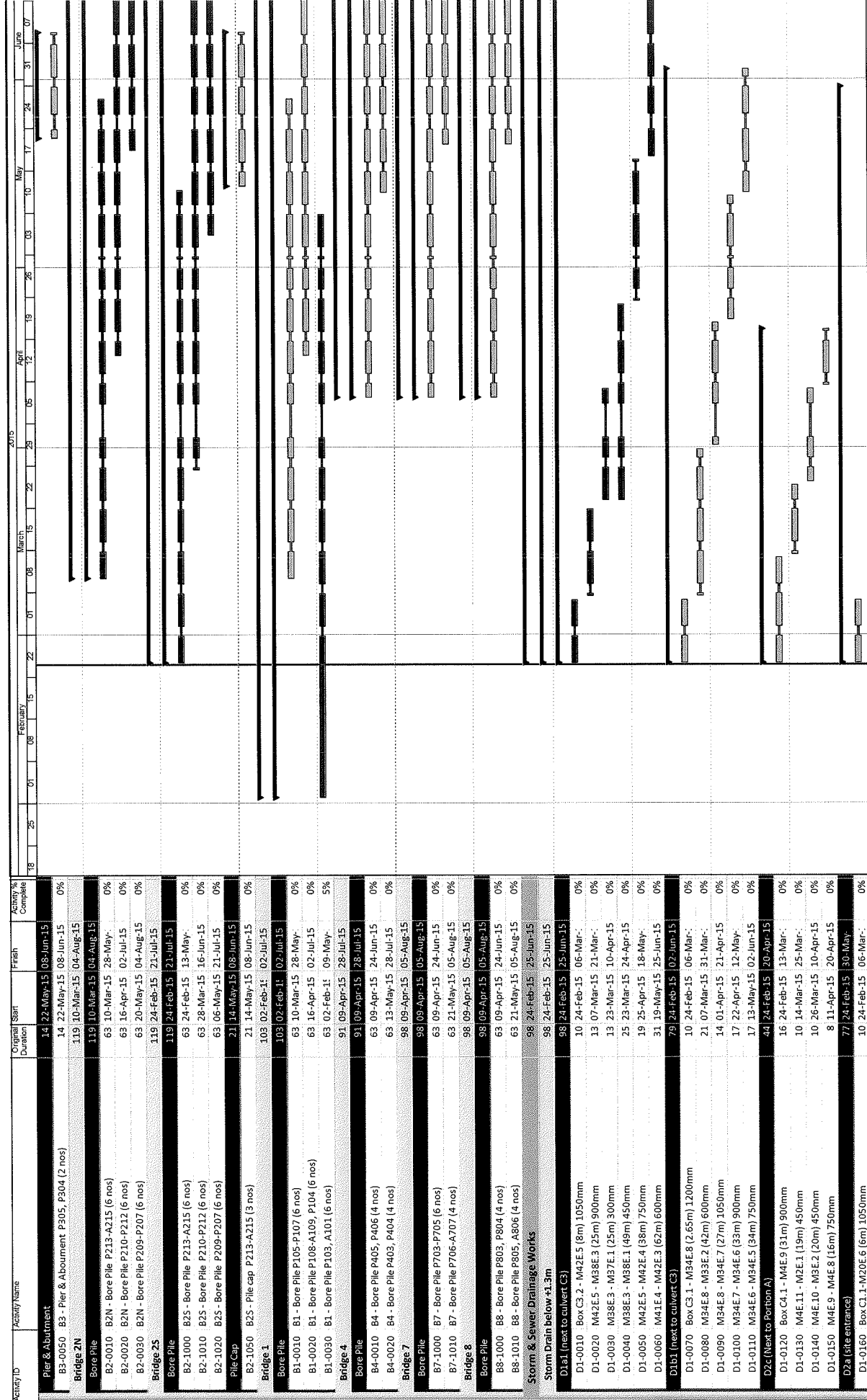
HKBCF Infrastructure (Western Portion) - Monthly Progress 07 - Three Month Rolling Programme

WP01-MRP07



HKBCF Infrastructure (Western Portion) - Monthly Progress 07 - Three Month Rolling Programme

WP01-MRP07

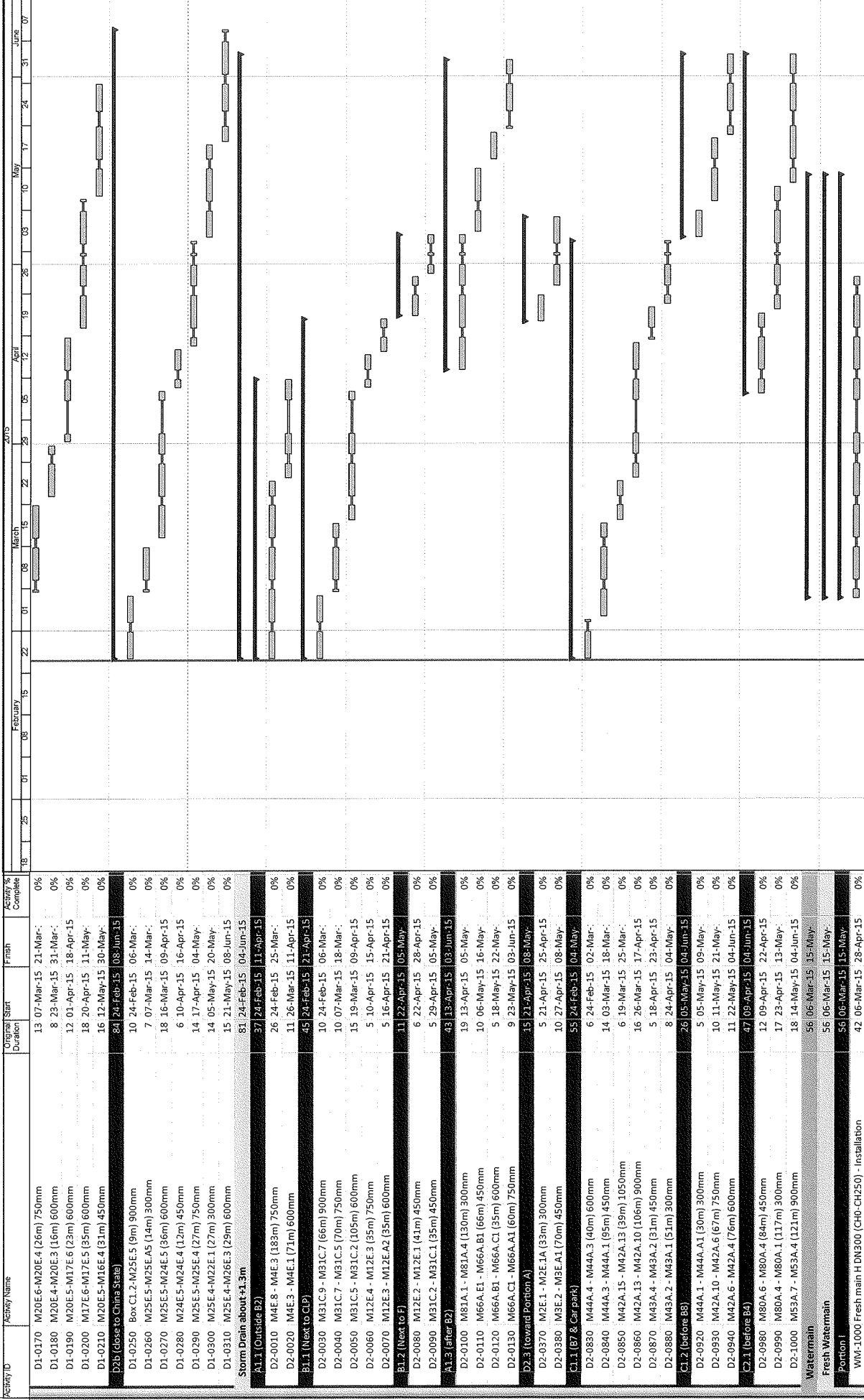


Activity ID	Activity Name	Original Start	Original Duration	Actual Start	Actual Duration	Actual End	Actual Level of Effort	Actual Work	Remaining Work	Critical Remaining Work	Summary
B3-0050	B3 - Pier & Abutment P305, P304 (2 nos)	14 22-May-15	08-Jun-15	14 22-May-15	08-Jun-15	08-Jun-15	0%				
B2-0020	B2N - Bore Pile P210-P212 (6 nos)	119 10-Mar-15	04-Aug-15	119 10-Mar-15	04-Aug-15	04-Aug-15	0%				
B2-0030	B2N - Bore Pile P209-P207 (6 nos)	63 10-Mar-15	28-May-15	63 10-Mar-15	28-May-15	28-May-15	0%				
B2-1000	B2S - Bore Pile P215-A215 (6 nos)	63 24-Feb-15	21-Jul-15	63 24-Feb-15	21-Jul-15	21-Jul-15	0%				
B2-1010	B2S - Bore Pile P210-P212 (6 nos)	63 28-Mar-15	16-Jun-15	63 28-Mar-15	16-Jun-15	16-Jun-15	0%				
B2-1020	B2S - Bore Pile P209-P207 (6 nos)	63 06-May-15	21-Jul-15	63 06-May-15	21-Jul-15	21-Jul-15	0%				
B2-1050	B2S - Pile cap P213-A215 (3 nos)	21 14-May-15	08-Jun-15	21 14-May-15	08-Jun-15	08-Jun-15	0%				
B1-0010	B1 - Bore Pile P105-P107 (6 nos)	103 02-Feb-15	02-Jul-15	103 02-Feb-15	02-Jul-15	02-Jul-15	0%				
B1-0020	B1 - Bore Pile P108-A109, P104 (6 nos)	63 16-Apr-15	02-Jul-15	63 16-Apr-15	02-Jul-15	02-Jul-15	0%				
B1-0030	B1 - Bore Pile P103, A101 (6 nos)	63 02-Feb-15	09-May-15	63 02-Feb-15	09-May-15	09-May-15	5%				
B4-0010	B4 - Bore Pile P405, P406 (4 nos)	91 09-Apr-15	28-Jul-15	91 09-Apr-15	28-Jul-15	28-Jul-15	0%				
B4-0020	B4 - Bore Pile P403, P404 (4 nos)	63 09-Apr-15	24-Jun-15	63 09-Apr-15	24-Jun-15	24-Jun-15	0%				
B7-1010	B7 - Bore Pile P706-A707 (4 nos)	63 21-May-15	05-Aug-15	63 21-May-15	05-Aug-15	05-Aug-15	0%				
B8-1000	B8 - Bore Pile P803, P804 (4 nos)	98 09-Apr-15	05-Aug-15	98 09-Apr-15	05-Aug-15	05-Aug-15	0%				
B8-1010	B8 - Bore Pile P805, A806 (4 nos)	63 21-May-15	05-Aug-15	63 21-May-15	05-Aug-15	05-Aug-15	0%				
D1a.1	next to culvert C3	98 24-Feb-15	25-Jun-15	98 24-Feb-15	25-Jun-15	25-Jun-15	0%				
D1-0010	Box C3.2 - M42E5 (8m) 1050mm	10 24-Feb-15	06-Mar-15	10 24-Feb-15	06-Mar-15	06-Mar-15	0%				
D1-0020	M42E5 - M38E3 (25m) 900mm	13 07-Mar-15	21-Mar-15	13 07-Mar-15	21-Mar-15	21-Mar-15	0%				
D1-0030	M38E3 - M37E1 (25m) 300mm	13 23-Mar-15	10-Apr-15	13 23-Mar-15	10-Apr-15	10-Apr-15	0%				
D1-0040	M38E3 - M38E1 (49m) 450mm	25 23-Mar-15	24-Apr-15	25 23-Mar-15	24-Apr-15	24-Apr-15	0%				
D1-0050	M42E5 - M42E4 (38m) 750mm	19 25-Apr-15	18-May-15	19 25-Apr-15	18-May-15	18-May-15	0%				
D1-0060	M41E4 - M42E3 (62m) 600mm	31 19-May-15	25-Jun-15	31 19-May-15	25-Jun-15	25-Jun-15	0%				
D1b1	next to culvert C3	79 24-Feb-15	02-Jun-15	79 24-Feb-15	02-Jun-15	02-Jun-15	0%				
D1-0070	Box C3.1 - M34E8 (2.65m) 1200mm	10 24-Feb-15	06-Mar-15	10 24-Feb-15	06-Mar-15	06-Mar-15	0%				
D1-0080	M34E8 - M33E2 (42m) 600mm	21 07-Mar-15	31-Mar-15	21 07-Mar-15	31-Mar-15	31-Mar-15	0%				
D1-0090	M34E8 - M34E7 (27m) 1050mm	14 01-Apr-15	21-Apr-15	14 01-Apr-15	21-Apr-15	21-Apr-15	0%				
D1-0100	M34E7 - M34E6 (33m) 900mm	17 22-Apr-15	12-May-15	17 22-Apr-15	12-May-15	12-May-15	0%				
D1-0110	M34E6 - M34E5 (34m) 750mm	17 13-May-15	02-Jun-15	17 13-May-15	02-Jun-15	02-Jun-15	0%				
D2a	(Next to Portion A)	44 24-Feb-15	20-Apr-15	44 24-Feb-15	20-Apr-15	20-Apr-15	0%				
D1-0120	Box C4.1 - M4E9 (31m) 900mm	16 24-Feb-15	13-Mar-15	16 24-Feb-15	13-Mar-15	13-Mar-15	0%				
D1-0130	M4E11 - M2E1 (19m) 450mm	10 14-Mar-15	25-Mar-15	10 14-Mar-15	25-Mar-15	25-Mar-15	0%				
D1-0140	M4E10 - M3E2 (20m) 450mm	10 26-Mar-15	10-Apr-15	10 26-Mar-15	10-Apr-15	10-Apr-15	0%				
D1-0150	M4E9 - M4E8 (16m) 750mm	8 11-Apr-15	30-Apr-15	8 11-Apr-15	30-Apr-15	30-Apr-15	0%				
D2a	(Site entrance)	77 24-Feb-15	30-May-15	77 24-Feb-15	30-May-15	30-May-15	0%				
D1-0160	Box C1.1-M20E6 (6m) 1050mm	10 24-Feb-15	06-Mar-15	10 24-Feb-15	06-Mar-15	06-Mar-15	0%				

Date	Revision	Checked	Approved
24-Feb-15	monthly Report No. 7		

HKBCF Infrastructure (Western Portion) - Monthly Progress 07 - Three Month Rolling Programme

WP01-MRP07



Date	Revision	Checked	Approved
24-Feb-15	monthly Report No. 7		

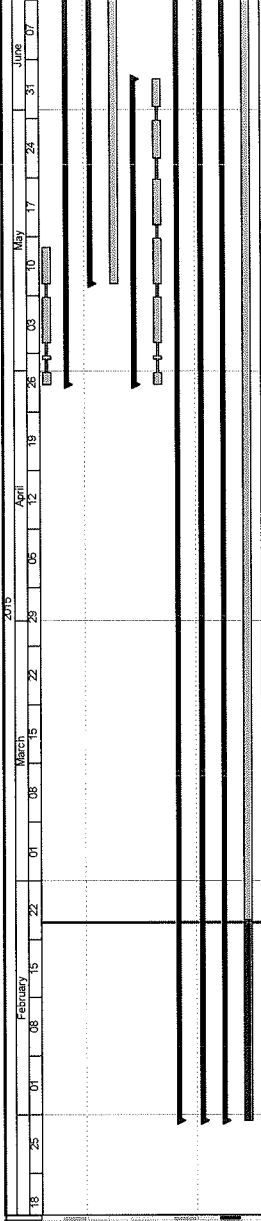
Summary

- Remaining Level of Effort
- Actual Level of Effort
- Remaining Work
- Critical Remaining Work
- Milestone
- Actual Work

HKBCF Infrastructure (Western Portion) - Monthly Progress 07 - Three Month Rolling Programme

WP01-MRP07

Activity ID	Activity Name	Original Start	Original Duration	Finish	Activity % Complete
WM-1010	Fresh main H DN300 (CH0-CH250) - Testing & backfill	14 29-Apr-15	15	15-May-15	0%
Utilities					
UT-1000	CLP Cable	29-Apr-15	57	24-Jun-15	
UT-1000	CLP trench bridge 2 to Sub-station	11-May-15	45	24-Jun-15	0%
UT-1170	Cable duct for TCS5 & other department (I)	29-Apr-15	30	04-Jun-15	0%
Road Works					
Road Furniture & Fit out		31-Jan-15	144	03-Jul-15	
Sign Gantry		31-Jan-15	144	03-Jul-15	10%
RW-1595 Pre-drill SI for Pre-bore H-pile (48no x 6day/drill) / 3 no of plan					



Remaining Level of Effort

Actual Level of Effort

Actual Work

Remaining Work

Critical Remaining Work

Milestone

Summary

Page 4 of 4

Date	Revision	Checked	Approved
24-Feb-15	monthly Report No. 7		