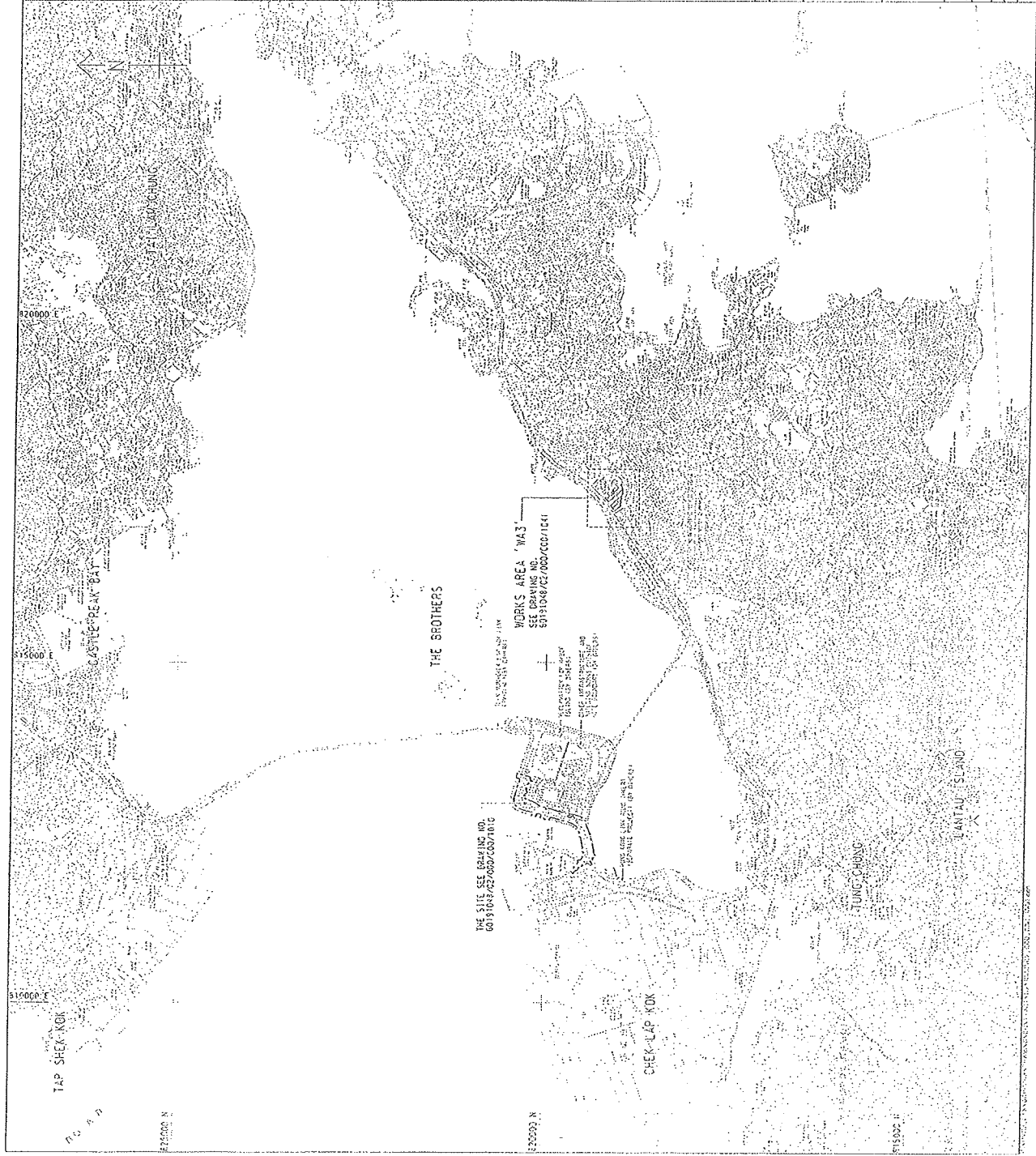


NOTES:

- 1. THIS DRAWING IS FOR INFORMATION ONLY AND IS NOT TO BE USED FOR CONSTRUCTION.
- 2. THE SITE IS LOCATED IN THE VICINITY OF THE PROPOSED HIGHWAY.
- 3. THE SITE IS SUBJECT TO THE PROVISIONS OF THE HIGHWAY ACT, 1963.

LEGEND:

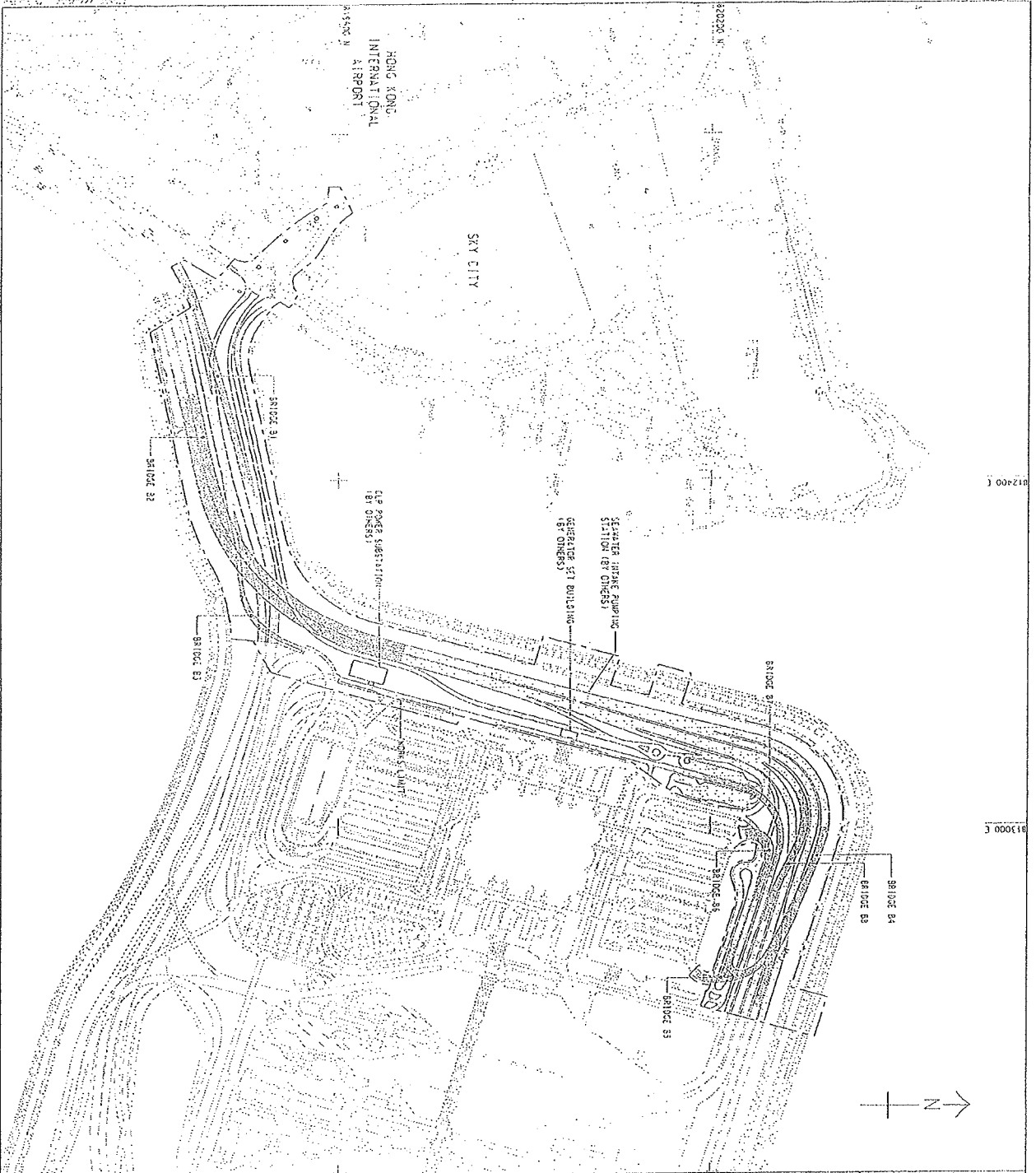


SITE LOCATION PLAN

**AECOM** Aedas  
Rogers Stirk Heurich + Partners  
P.O. Box 1000, Avenue 400

ORCID: 60191048/02/000/000/1000  
E.S. 1/27

DATE	02/12/2007
BY	...
CHECKED BY	...
DATE	...
SCALE	...
PROJECT NO.	...
CLIENT	...
DESIGNER	...
APPROVED BY	...



**LOCATION PLAN**  
SCALE: 1:5000

**LEGEND:**

- 300' SQUARE
- 400' SQUARE
- 500' SQUARE
- 600' SQUARE

---

**GENERAL ARRANGEMENT**

**AECOM**      **Aedas**

ROBERTS SYDNEY ARCHITECTS + PLANNERS  
 1000 SHEPPARD AVENUE EAST, SUITE 100  
 SCARBOROUGH, ONTARIO M1S 1W4

PROJECT NO. 60191048/22/000/000/1933  
 DATE: 11/13/2022  
 SCALE: AS SHOWN  
 DRAWN BY: [Name]  
 CHECKED BY: [Name]

© COPYRIGHT RESERVED

**DATE:** 11/13/2022

**SCALE:** AS SHOWN

**PROJECT NO.:** 60191048/22/000/000/1933

**DATE:** 11/13/2022

**SCALE:** AS SHOWN

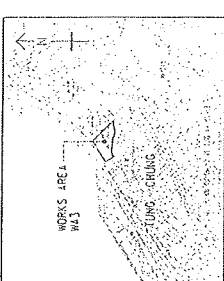
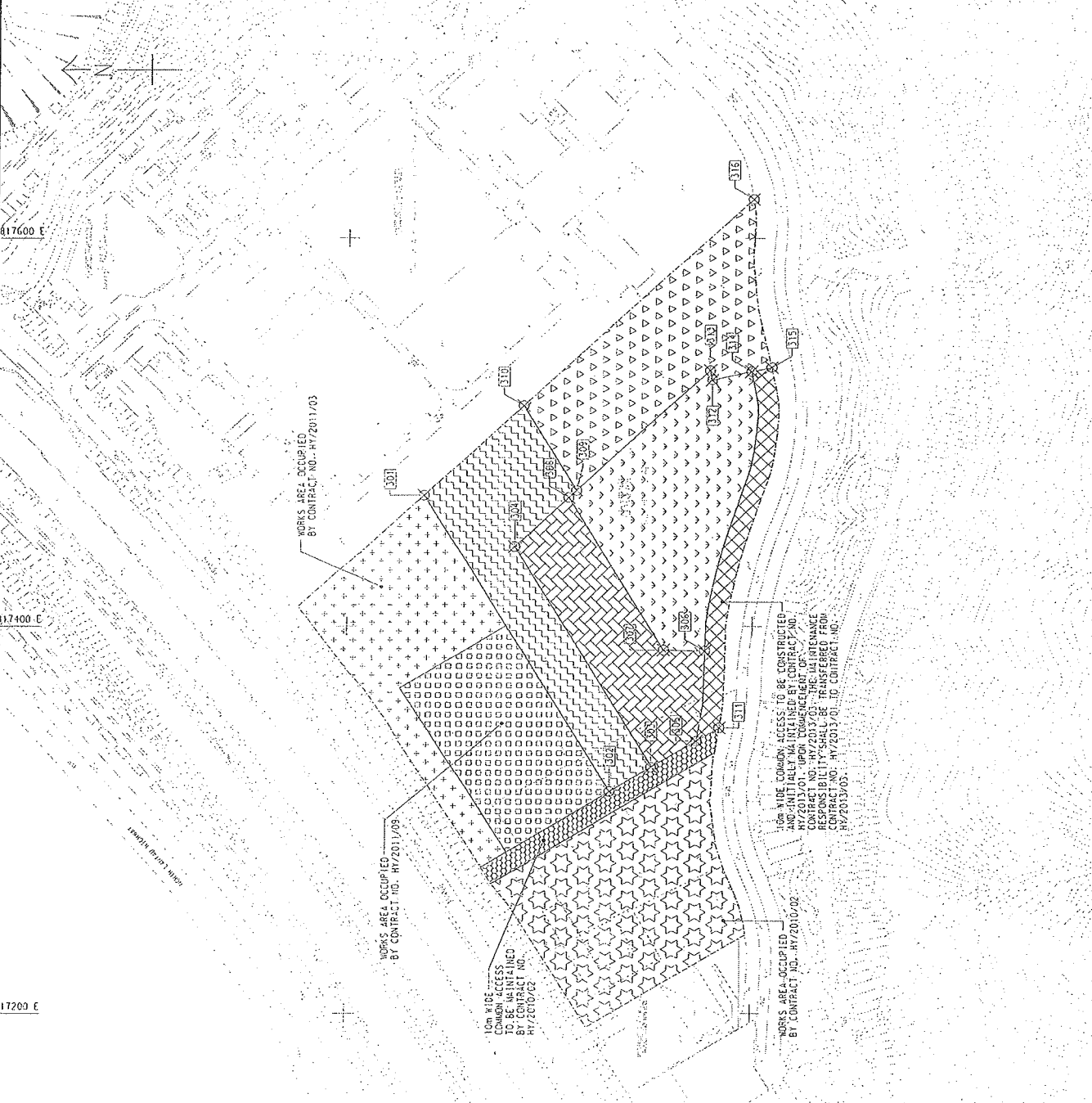
**PROJECT NO.:** 60191048/22/000/000/1933

**DATE:** 11/13/2022

**SCALE:** AS SHOWN

**PROJECT NO.:** 60191048/22/000/000/1933

SETTING OUT POINT	
POINT	DESCRIPTION
101	817400.785
102	817387.234
103	817400.654
104	817387.156
105	817387.156
106	817387.156
107	817387.156
108	817387.156
109	817387.156
110	817387.156
111	817387.156
112	817387.156
113	817387.156
114	817387.156
115	817387.156
116	817387.156
117	817387.156
118	817387.156
119	817387.156
120	817387.156
121	817387.156
122	817387.156
123	817387.156
124	817387.156
125	817387.156
126	817387.156
127	817387.156
128	817387.156
129	817387.156
130	817387.156
131	817387.156
132	817387.156
133	817387.156
134	817387.156
135	817387.156
136	817387.156
137	817387.156
138	817387.156
139	817387.156
140	817387.156
141	817387.156
142	817387.156
143	817387.156
144	817387.156
145	817387.156
146	817387.156
147	817387.156
148	817387.156
149	817387.156
150	817387.156
151	817387.156
152	817387.156
153	817387.156
154	817387.156
155	817387.156
156	817387.156
157	817387.156
158	817387.156
159	817387.156
160	817387.156
161	817387.156
162	817387.156
163	817387.156
164	817387.156
165	817387.156
166	817387.156
167	817387.156
168	817387.156
169	817387.156
170	817387.156
171	817387.156
172	817387.156
173	817387.156
174	817387.156
175	817387.156
176	817387.156
177	817387.156
178	817387.156
179	817387.156
180	817387.156
181	817387.156
182	817387.156
183	817387.156
184	817387.156
185	817387.156
186	817387.156
187	817387.156
188	817387.156
189	817387.156
190	817387.156
191	817387.156
192	817387.156
193	817387.156
194	817387.156
195	817387.156
196	817387.156
197	817387.156
198	817387.156
199	817387.156
200	817387.156



**LOCATION PLAN**  
SCALE: 1:20,000

**NOTES:**

1. DIMENSIONS ARE RELATED TO WORKS AREA W43.
2. DIMENSIONS ARE IN METERS UNLESS OTHERWISE STATED.
3. DIMENSIONS ARE IN METERS UNLESS OTHERWISE STATED.

**LEGEND:**

- WORKS AREA BOUNDARY
- POSITION 3.1
- POSITION 3.2
- POSITION 3.3
- POSITION 3.4
- POSITION 3.5
- POSITION 3.6
- POSITION 3.7
- POSITION 3.8
- POSITION 3.9

**WORKS AREA W43**

**AECOM**  
Rogers Stirk Harbour + Partners  
BURO HAPOLD ATKINS ADI

**Aedas**

DRGNO: 60191048/C2/000/C00/1041  
SCALE: 1:20,000  
DATE: 15/03/2010  
DRAWN BY: [Name]  
CHECKED BY: [Name]  
APPROVED BY: [Name]

© COPYRIGHT RESERVED