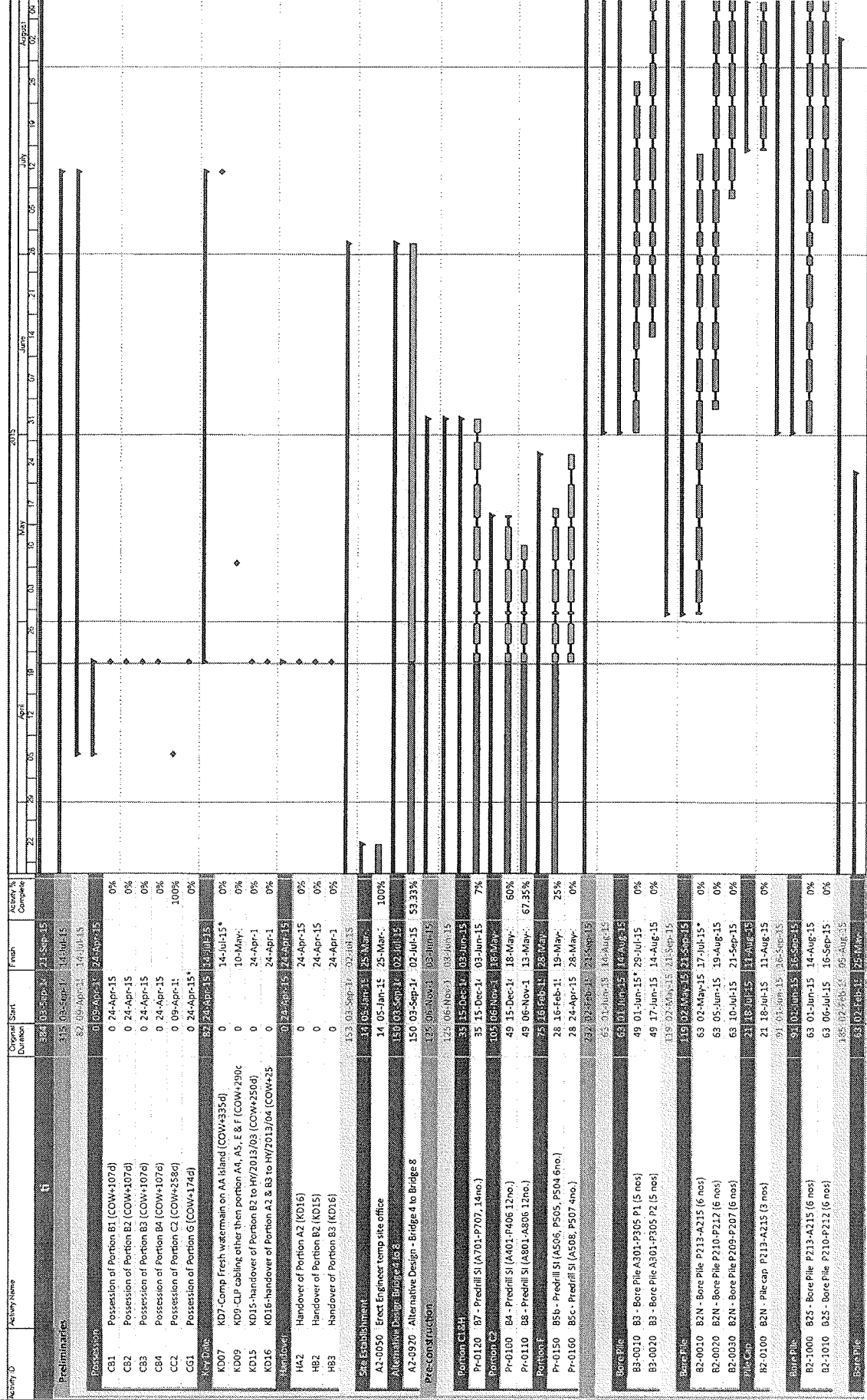


HKBCF Infrastructure (Western Portion) - Monthly Progress 09 - Three Month Rolling Programme

WP01-MRP09



Summary		Date	Revision	Checked	Approved
Remaining Level of Effort	█	24-Apr-15	monthly Report No. 9		
Actual Level of Effort	█				
Remaining Work	█				
Critical Remaining Work	█				
Actual Work	█				
Milestone	◆				

HKBCF Infrastructure (Western Portion) - Monthly Progress 09 - Three Month Rolling Programme

WFO1-MRP09

Activity ID	Activity Name	Original Start	Finish	Actual % Complete	Gantt Chart
B1-002S	B1 - Bore Pile P102-A101 (4 nos)	63 02-Feb-15	25-May-15	49.21%	
Pile Cap	B1 - pile cap P102-A101 (2 nos)	21 26-Mar-15	15-Jun-15	0%	
Pre- & Aboument	B1-005S B1 - Pier & Aboument P102-A101 (2 nos)	14 16-Jun-15	29-Jun-15	0%	
Dock 4	B1-010S B1 - Pier & Aboument P102-A101 (2 nos)	14 16-Jun-15	29-Jun-15	0%	
B1-410	B1 - Salswork & Base F/N (P102-A101)	14 30-Jun-15	16-Jul-15	0%	
B1-420	B1 - Rebar & post-tender member (P102-A101)	17 17-Jul-15	05-Aug-15	0%	
Watermain	B1 - Rebar & post-tender member (P102-A101)	23 18-Aug-15	24-Jun-15	0%	
Portion 1	WM-1000 Fresh main H DN300 (CH0-CH250) - Installation	23 18-Aug-15	29-Jun-15	14.29%	
WM-1010	WM-1010 Fresh main H DN300 (CH0-CH250) - Testing & backfill	14 08-Jun-15	24-Jun-15	0%	
Utilities	UT-1000 CLP trench bridge 2 to Sub-station	30 11-May-15	06-Aug-15	0%	
UT-1010	CLP trench bridge 2 to South Portion	45 25-Jun-15	08-Aug-15	0%	
UT-1170	Cable duct for TCS5 & other department (I)	30 08-Jun-15	14-Jul-15	0%	
Sign Gantry	Sign Gantry	14 31-Jun-15	12-Jun-15	0%	
RW-139S	Pre-cast SI for Pre-bore+pile (48no x 6day/2mil / 3 no of plan	14 31-Jun-15	12-Jun-15	63.28%	

Remaining Level of Effort

Actual Level of Effort

Actual Work

Remaining Work

Critical Remaining Work

Milestone

Summary

Page 2 of 2

Date	Revision	Checked	Approved
24-Apr-15	monthly Report No. 9		