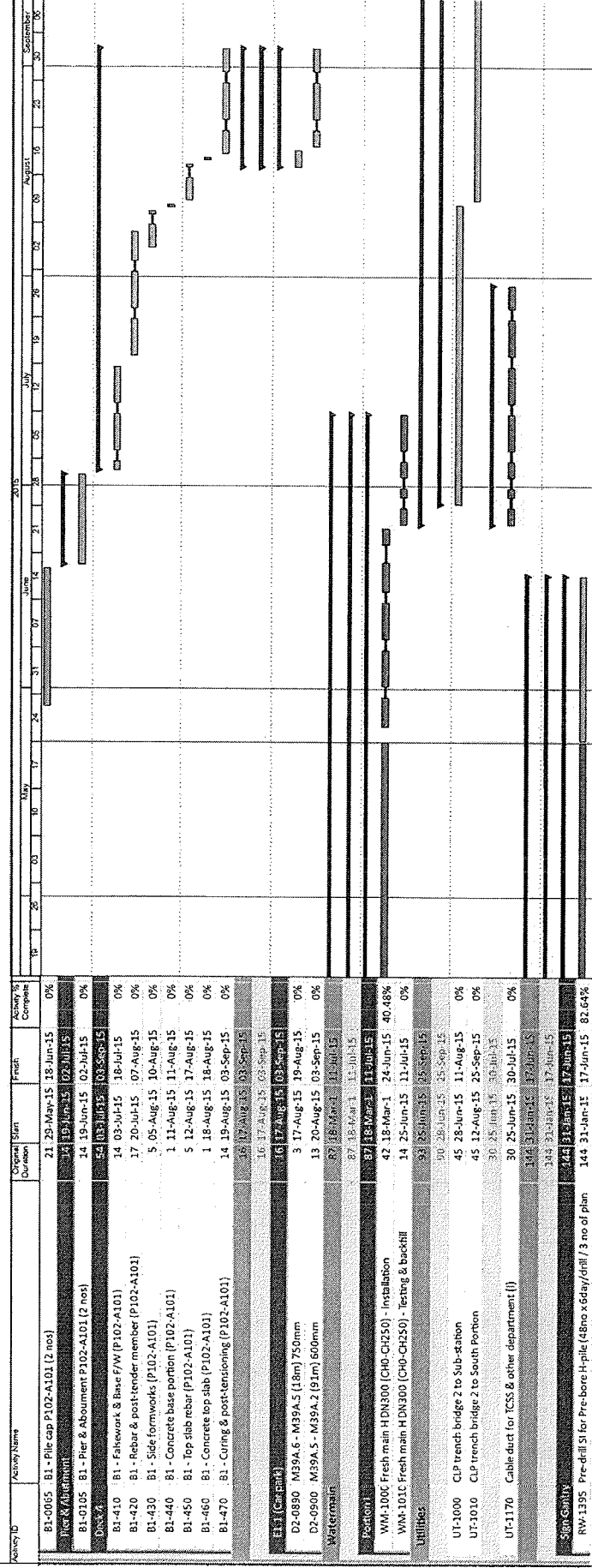


HKBCF Infrastructure (Western Portion) - Monthly Progress 10 - Three Month Rolling Programme

WP01-MRP10



Remaining Level of Effort

Actual Level of Effort

Actual Work

Remaining Work

Critical Remaining Work

Milestone

Summary

Date

24-Apr-15

Revision

monthly Report No. 10

Checked

Approved

Page 2 of 2