



Western Portion - Integrated Works Prog 3 - Monthly Progress 14 - Three Month Rolling Programme

Int 2(6)-MRC 14

Activity Name	Start Date	Finish Date	Actual % Complete	Planned % Complete
Western Portion - Integrated Works Prog 3 - Monthly Progress 14 - Three Month Rolling Programme				
Preparation of Construction Data	07/01/14	17/09/14	100%	100%
CA4 Possession of Portion A1 (COW+384d)	07/01/14	17/09/14	100%	100%
CAS Possession of Portion A1 (COW+384d)	07/01/14	17/09/14	100%	100%
CB1 Possession of Portion B1 (COW+107d)	07/01/14	17/09/14	100%	100%
CB2 Possession of Portion B2 (COW+107d)	07/01/14	17/09/14	100%	100%
CB3 Possession of Portion B3 (COW+107d)	07/01/14	17/09/14	100%	100%
CB4 Possession of Portion B4 (COW+107d)	07/01/14	17/09/14	100%	100%
CE1 Possession of Portion E (COW+487d)	07/01/14	17/09/14	100%	100%
CF1 Possession of Portion F (COW+487d)	07/01/14	17/09/14	100%	100%
CG1 Possession of Portion G (COW+174d)	07/01/14	17/09/14	100%	100%
KD7 KD7-Come fresh water main on AA island (COW+335d)	07/01/14	17/09/14	100%	100%
KD9 KD9-CIP cabling other than portion AA, AS, E & F (COW+290d)	07/01/14	17/09/14	100%	100%
KD10 KD10-CIP cabling for portion AA, AS, E & F (COW+310d)	07/01/14	17/09/14	100%	100%
KD15 KD15-Handover of Portion B2 to HV2013/03 (COW+250d)	07/01/14	17/09/14	100%	100%
KD16 KD16-Handover of Portion A2 & B3 to HV2013/04 (COW+25d)	07/01/14	17/09/14	100%	100%
HA2 Handover of Portion A2 (K01E)	07/01/14	17/09/14	100%	100%
HB2 Handover of Portion B2 (K01S)	07/01/14	17/09/14	100%	100%
HB3 Handover of Portion B3 (K01S)	07/01/14	17/09/14	100%	100%
Handover with other	07/01/14	17/09/14	100%	100%
HY2013/03/03 Handover of AS & F to P&L for three weeks	07/01/14	17/09/14	100%	100%
A1-0100 Handover of B1, B3 to P&L for three weeks	07/01/14	17/09/14	100%	100%
A1-0110 Handover of Abutment at Bridge 5	07/01/14	17/09/14	100%	100%
A1-0150 Handover of Piling Station, General Building, Intake & Dis	07/01/14	17/09/14	100%	100%
A1-0240 Handover of Gen. Bldg to P&L	07/01/14	17/09/14	100%	100%
HY2013/03/03 Handover of AS & F to P&L for three weeks	07/01/14	17/09/14	100%	100%
A1-0150 Handover of B2 to VCP for three weeks	07/01/14	17/09/14	100%	100%
Handover of Portion C1 to P&L	07/01/14	17/09/14	100%	100%
Portion A	07/01/14	17/09/14	100%	100%
A1-0220 Portion A C105+10 to C105+440 50-120m offset - surcharge + r	07/01/14	17/09/14	100%	100%
A1-0230 Portion A C105+110 to C105+440 10-50m offset - surcharge + r	07/01/14	17/09/14	100%	100%
A1-0240 Portion A C105+440 to C105+650 10-40m offset - surcharge + r	07/01/14	17/09/14	100%	100%
A1-0250 Portion A C105+650 to C105+650 10-120m offset - surcharge + r	07/01/14	17/09/14	100%	100%
A1-0260 Portion A C118 - C118 - Remove Temp rockfill & install rock Ar	07/01/14	17/09/14	100%	100%
Portion C1	07/01/14	17/09/14	100%	100%
A1-0300 Portion C2+ West main - surcharge + removal	07/01/14	17/09/14	100%	100%
A1-0310 Portion C2+ East main - surcharge + removal	07/01/14	17/09/14	100%	100%
A1-0320 Portion C2+ C113 - C117 Edge area - surcharge + removal	07/01/14	17/09/14	100%	100%
A1-0330 Portion C2+ C108 - C112 Edge area - surcharge + removal	07/01/14	17/09/14	100%	100%
A1-0340 Portion C2+ C104 - C107 Edge area - surcharge + removal	07/01/14	17/09/14	100%	100%
A1-0350 Portion C2+ C101 - C103 Edge area - surcharge + removal	07/01/14	17/09/14	100%	100%
A1-0370 Portion C2+ C101 - C112 - Remove Temp rockfill & install rock	07/01/14	17/09/14	100%	100%
Portion D	07/01/14	17/09/14	100%	100%
A1-0450 Portion D West 1 (C1) - Install C1-2 to C1-5 & backfill	07/01/14	17/09/14	100%	100%
A1-0460 Portion D West 1 (C1) - Handover C1 main area	07/01/14	17/09/14	100%	100%
A1-0470 Portion D West 1 (C1) - Vertical Seawall	07/01/14	17/09/14	100%	100%
A1-0480 Portion D West 1 (C1) - Cont C1-1 at sloping seawall	07/01/14	17/09/14	100%	100%

Summary

Remaining Level of Effort: 0%
 Actual Level of Effort: 100%
 Actual Work: 100%

Legend:
 Remaining Work
 Critical Remaining Work
 Measure

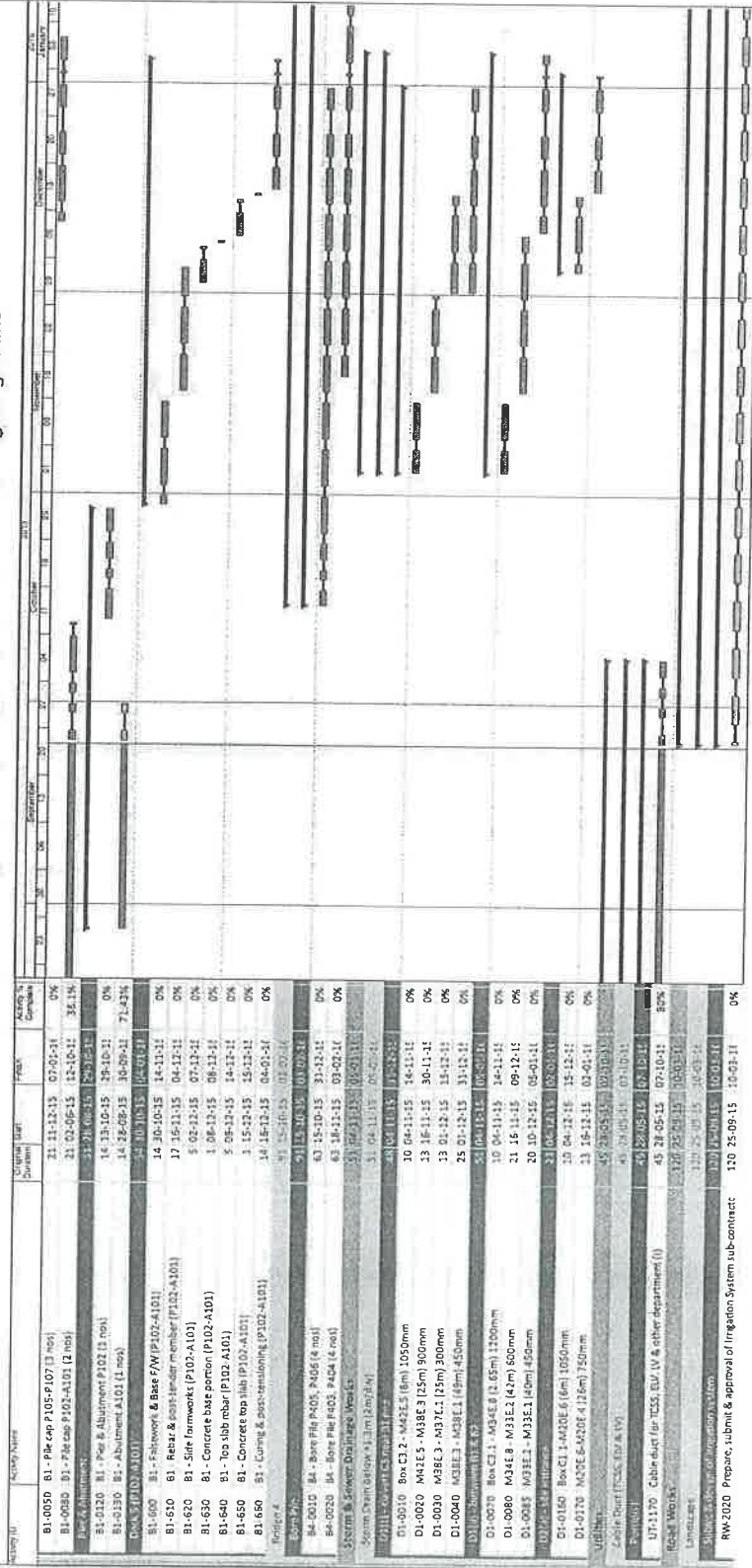
Page 1 of 3

Date: 24/09/14
 Revision: Ch...
 Monthly Report No.:
 Approved:



Western Portion - Integrated Works Prog 3 - Monthly Progress 14 - Three Month Rolling Programme

Int 2(a) MRO14



Remaining Level of Effort Remaining Work

Actual Level of Effort Actual Remaining Work

Actual Work Milestone

Summary