

HKBCF Infrastructure (Western Portion) - Monthly Progress 25 - Three Month Rolling Programme

WPD011-MRP25

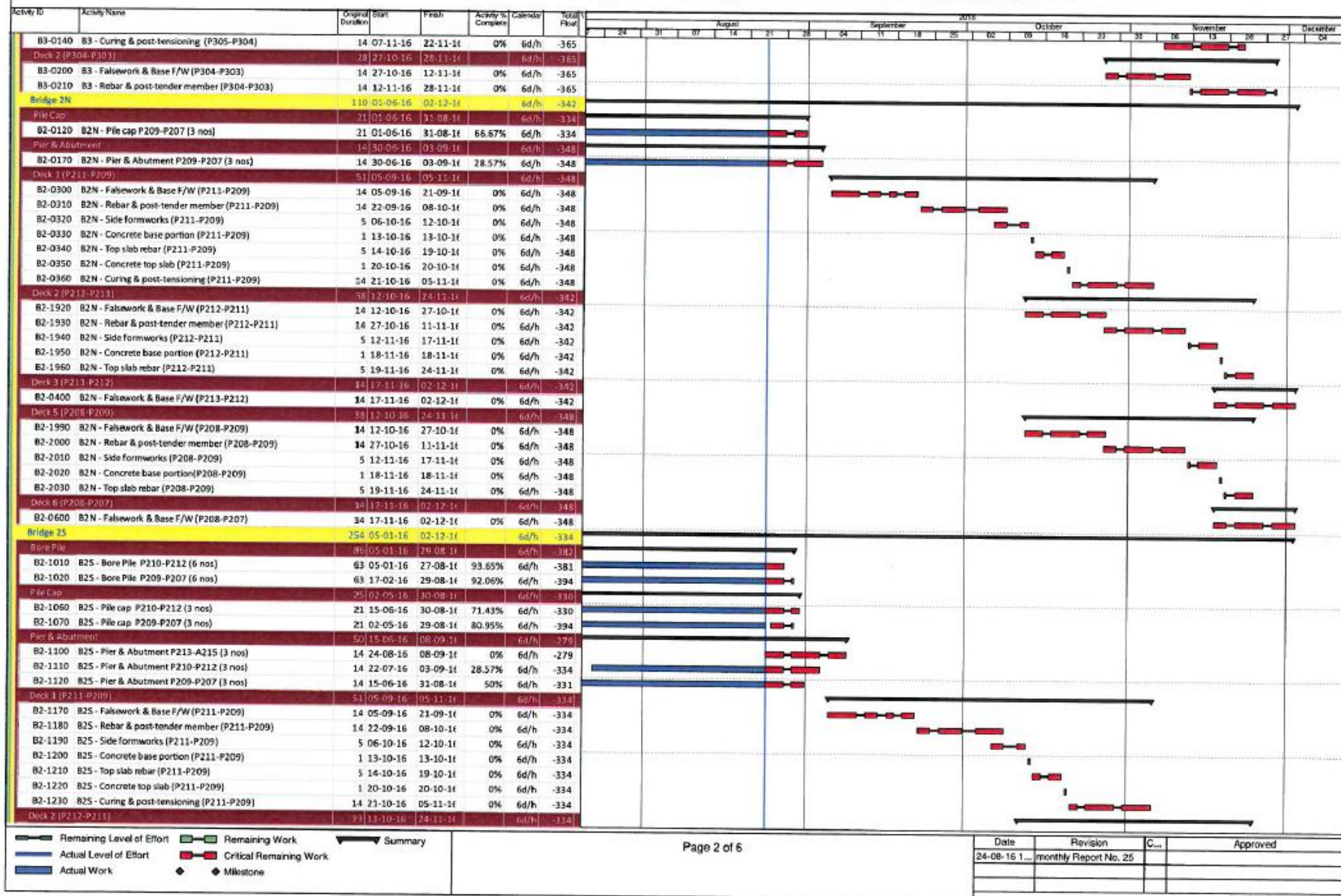
Activity ID	Activity Name	Original Duration	Start	Finish	Activity % Complete	Calendar	Total Float	2015															
								August	September	October	November	December											
HKBCF Infrastructure (Western Portion) - Monthly Progre																							
Preliminaries																							
	Contractual Date	0	24-08-16	24-08-16		WP-7d	1091																
	CA4 Possession of Portion A4 (COW+386d)	0	24-08-16	24-08-16	0%	WP-7d	-375																
	CA5 Possession of Portion A5 (COW+386d)	0	24-08-16	24-08-16	0%	WP-7d	-375																
	Key Date	0	24-08-16	24-08-16		WP-7d	1091																
	KD09 KD9-CLP cabling other than portion A4, A5, E & F (COW+290c)	0	24-08-16	24-08-16	0%	WP-7d	-470																
	KD10 KD10-CLP cabling for portion A4, A5, E & F (COW+510d)	0	24-08-16	24-08-16	0%	WP-7d	-191																
	KD15 KD15-handover of Portion B2 to HY/2013/03 (COW+250d)	0	24-08-16	24-08-16	0%	WP-7d	1091																
	KD16 KD16-handover of Portion A2 & B3 to HY/2013/04 (COW+250c)	0	24-08-16	24-08-16	0%	WP-7d	1091																
	Handover	0	24-08-16	24-08-16		WP-7d	1091																
	HA2 Handover of Portion A2 (KD16)	0	24-08-16	24-08-16	0%	WP-7d	1091																
	HB2 Handover of Portion B2 (KD15)	0	24-08-16	24-08-16	0%	WP-7d	1091																
	HB3 Handover of Portion B3 (KD16)	0	24-08-16	24-08-16	0%	WP-7d	1091																
	HH1 Handover of Portion H (KD11)	0	24-08-16	24-08-16	0%	WP-7d	-211																
	Interfases with other	0	24-08-16	24-08-16		WP-7d	1091																
	HY/2013/01 - Passenger Clearance Building	0	24-08-16	24-08-16		WP-7d	1091																
	A1-0100 Handover of B1 & B3 to PCB for there works	0	24-08-16	24-08-16	0%	WP-7d	1091																
	A1-0110 Handover of Abutment at Bridge 6	0	24-08-16	24-08-16	0%	WP-7d	-253																
	A1-0120 Handover of Abutment at Bridge 5b (A506)	0	24-08-16	24-08-16	0%	WP-7d	-99																
	A1-0130 Handover of Pumping Station, Gen set Building, intake & discl	0	24-08-16	24-08-16	0%	WP-7d	1091																
	A1-0140 Handover of Gen set Building to PCB	0	24-08-16	24-08-16	0%	WP-7d	1091																
	HY/2013/03 - Vehical Clearance Plazas	0	24-08-16	24-08-16		WP-7d	1091																
	A1-0150 Handover of B2 to VCP for there works	0	24-08-16	24-08-16	0%	WP-7d	1091																
	Alternative Design - Bridge Works	77	24-08-16	09-11-16		WP-7d	-249																
	Bridge B2	0	24-08-16	24-08-16		WP-7d	-354																
	A3-1280 B2 Substructure - Cap const work start	0	24-08-16	24-08-16	0%	WP-7d	-354																
	Bridge B4	0	29-09-16	29-09-16		WP-7d	618																
	A3-1480 B4 Substructure - Cap const work start	0	29-09-16	29-09-16	0%	WP-7d	-618																
	Bridge B5	0	24-08-16	24-08-16		WP-7d	172																
	A3-1680 B5 Substructure - Cap const work start	0	24-08-16	24-08-16	0%	WP-7d	-172																
	Bridge B7	0	09-11-16	09-11-16		WP-7d	-488																
	A3-1880 B7 Substructure - Cap const work start	0	09-11-16	09-11-16	0%	WP-7d	-488																
	Bridge Structure	306	05-01-16	09-02-17		6d/h	-217																
	Bridge 3	150	08-04-16	28-11-16		6d/h	-333																
	Bore Pile (144/pile + 35d for test & report)	49	08-04-16	27-08-16		6d/h	-362																
	B3-0020 B3 - Bore Pile A301-P305 P2 (5 nos)	48	08-04-16	27-08-16	91.84%	6d/h	-362																
	Pile Cap	35	04-07-16	03-09-16		6d/h	-337																
	B3-0030 B3 - Pile cap P305, P304 (2 nos)	21	11-07-16	03-09-16	52.38%	6d/h	-365																
	B3-0040 B3 - Pile cap P303-P302 (2 nos)	21	04-07-16	31-08-16	66.67%	6d/h	-334																
	Pier & Abutment	42	05-09-16	26-10-16		6d/h	-305																
	B3-0050 B3 - Pier & Abutment P305, P304 (2 nos)	14	05-09-16	21-09-16	0%	6d/h	-365																
	B3-0060 B3 - Pier & Abutment P303, P302 (2 nos)	14	22-09-16	08-10-16	0%	6d/h	-351																
	B3-0065 B3 - Pier & Abutment A301 (1 nos)	14	11-10-16	26-10-16	0%	6d/h	-305																
	Deck 1 (P305-P304)	51	22-09-16	22-11-16		6d/h	-465																
	B3-0070 B3 - Falsework & Base F/W (P305-P304)	14	22-09-16	08-10-16	0%	6d/h	-365																
	B3-0080 B3 - Rebar & post-tender member (P305-P304)	14	11-10-16	26-10-16	0%	6d/h	-365																
	B3-0090 B3 - Side formworks (P305-P304)	5	24-10-16	28-10-16	0%	6d/h	-365																
	B3-0100 B3 - Concrete base portion (P305-P304)	1	29-10-16	29-10-16	0%	6d/h	-365																
	B3-0110 B3 - Top slab rebar (P305-P304)	5	31-10-16	04-11-16	0%	6d/h	-365																
	B3-0120 B3 - Concrete top slab (P305-P304)	1	05-11-16	05-11-16	0%	6d/h	-365																



Date	Revision	C...	Approved
24-08-16 1...	monthly Report No. 25		

HKBCF Infrastructure (Western Portion) - Monthly Progress 25 - Three Month Rolling Programme

WPD016-MRP25



HKBCF Infrastructure (Western Portion) - Monthly Progress 25 - Three Month Rolling Programme

WPD011-MRP25

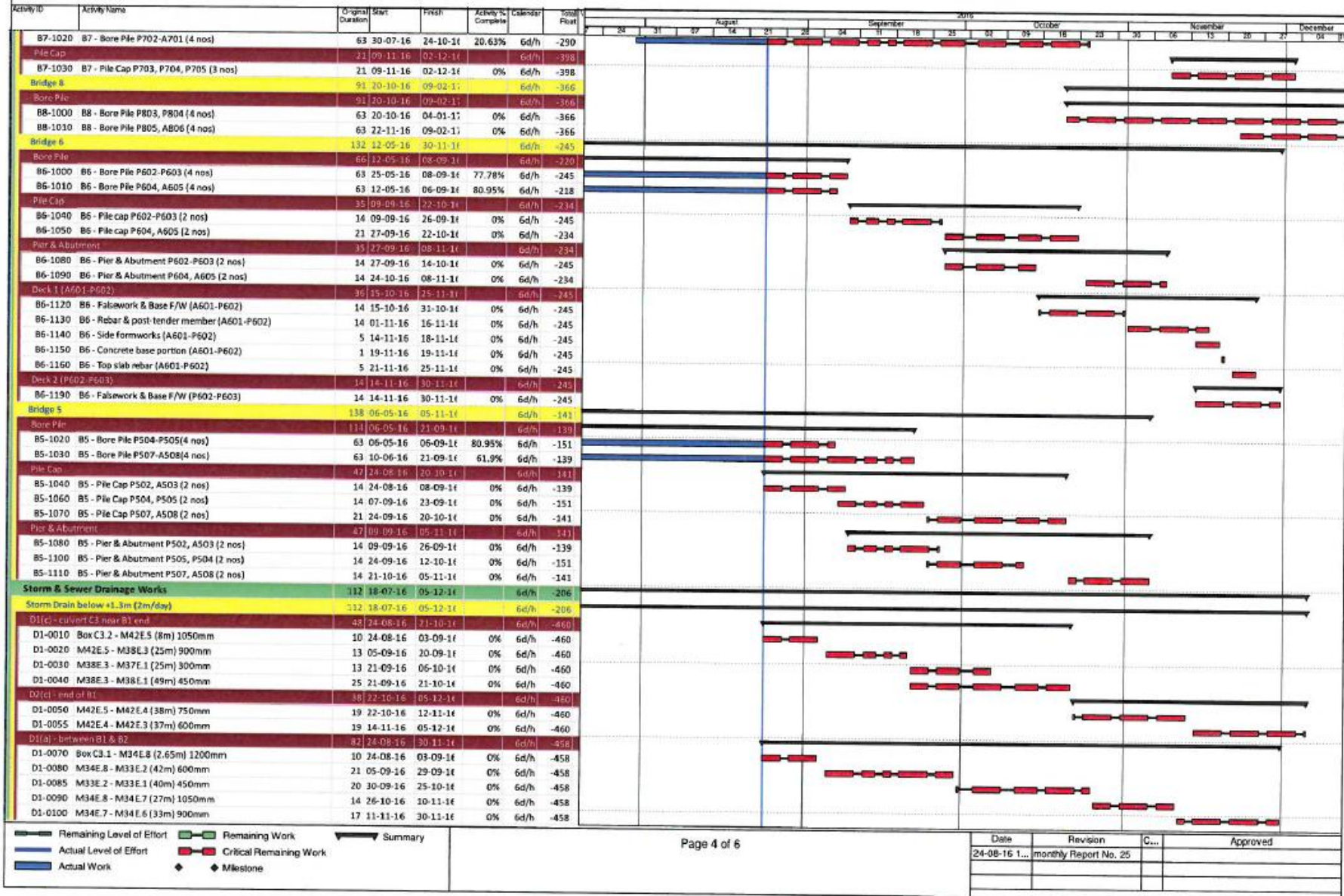
Activity ID	Activity Name	Original Start	Original Finish	Actual % Complete	Calendar	Total Float	2016																
							August	September	October	November	December												
B2-2060	B25 - Falsework & Base F/W (P212-P211)	14	11-10-16	27-10-16	0%	6d/h	-334																
B2-2070	B25 - Rebar & post-tender member (P212-P211)	14	27-10-16	11-11-16	0%	6d/h	-334																
B2-2080	B25 - Side Formworks (P212-P211)	5	12-11-16	17-11-16	0%	6d/h	-334																
B2-2090	B25 - Concrete base portion (P212-P211)	1	18-11-16	18-11-16	0%	6d/h	-334																
B2-2100	B25 - Top slab rebar (P212-P211)	5	19-11-16	24-11-16	0%	6d/h	-334																
Deck 3 (P213-P217)																							
B2-1240	B25 - Falsework & Base F/W (P213-P212)	14	16-11-16	02-12-16	0%	6d/h	-334																
Deck 5 (P208-P209)																							
B2-2130	B25 - Falsework & Base F/W (P208-P209)	14	11-10-16	27-10-16	0%	6d/h	-334																
B2-2140	B25 - Rebar & post-tender member (P208-P209)	14	27-10-16	11-11-16	0%	6d/h	-334																
B2-2150	B25 - Side Formworks (P208-P209)	5	12-11-16	17-11-16	0%	6d/h	-334																
B2-2160	B25 - Concrete base portion (P208-P209)	1	18-11-16	18-11-16	0%	6d/h	-334																
B2-2170	B25 - Top slab rebar (P208-P209)	5	19-11-16	24-11-16	0%	6d/h	-334																
Deck 6 (P208-P207)																							
B2-1380	B25 - Falsework & Base F/W (P208-P207)	14	16-11-16	02-12-16	0%	6d/h	-334																
Bridge 1																							
Deck 1 (P105-P107)																							
B1-0200	B1 - Falsework & Base F/W (P105-P107)	14	24-08-16	08-09-16	0%	6d/h	-333																
B1-0210	B1 - Rebar & post-tender member (P105-P107)	14	09-09-16	26-09-16	0%	6d/h	-333																
B1-0220	B1 - Side formworks (P105-P107)	5	23-09-16	28-09-16	0%	6d/h	-333																
B1-0230	B1 - Concrete base portion (P105-P107)	1	29-09-16	29-09-16	0%	6d/h	-333																
B1-0240	B1 - Top slab rebar (P105-P107)	5	30-09-16	06-10-16	0%	6d/h	-333																
B1-0250	B1 - Concrete top slab (P105-P107)	1	07-10-16	07-10-16	0%	6d/h	-333																
B1-0260	B1 - Curing & post-tensioning (P105-P107)	14	08-10-16	25-10-16	0%	6d/h	-333																
Deck 2 (P108-A109)																							
B1-270	B1 - Falsework & Base F/W (P108-A109)	14	27-09-16	15-10-16	0%	6d/h	-333																
B1-280	B1 - Rebar & post-tender member (P108-A109)	14	15-10-16	31-10-16	0%	6d/h	-333																
B1-290	B1 - Side formworks (P108-A109)	5	31-10-16	04-11-16	0%	6d/h	-333																
B1-300	B1 - Concrete base portion (P108-A109)	1	05-11-16	05-11-16	0%	6d/h	-333																
B1-310	B1 - Top slab rebar (P108-A109)	5	07-11-16	11-11-16	0%	6d/h	-333																
B1-320	B1 - Concrete top slab (P108-A109)	1	12-11-16	12-11-16	0%	6d/h	-333																
B1-330	B1 - Curing & post-tensioning (P108-A109)	14	14-11-16	29-11-16	0%	6d/h	-333																
Deck 3 (P103-P104)																							
B1-340	B1 - Falsework & Base F/W (P103-P104)	14	03-11-16	19-11-16	0%	6d/h	-333																
B1-350	B1 - Rebar & post-tender member (P103-P104)	14	19-11-16	05-12-16	0%	6d/h	-333																
Bridge 4																							
Bore Pile																							
B4-0010	B4 - Bore Pile P405, P406 (4 nos)	63	04-07-16	28-09-16	52.38%	6d/h	-501																
B4-0020	B4 - Bore Pile P403, P404 (4 nos)	63	27-04-16	06-09-16	80.95%	6d/h	-471																
B4-0030	B4 - Bore Pile P402, A401 (4 nos)	63	27-07-16	29-10-16	12.7%	6d/h	-484																
Pile Cap																							
B4-0040	B4 - Pile Cap P405, P406 (2 nos)	21	29-09-16	25-10-16	0%	6d/h	-501																
B4-0050	B4 - Pile Cap P403, P404 (2 nos)	21	26-10-16	18-11-16	0%	6d/h	-501																
B4-0060	B4 - Pile Cap P402, A401 (2 nos)	21	19-11-16	13-12-16	0%	6d/h	-501																
Pier & Abutment																							
B4-0070	B4 - Pier & Abutment P405, P406 (2 nos)	14	26-10-16	10-11-16	0%	6d/h	-322																
B4-0080	B4 - Pier & Abutment P403, P404 (2 nos)	14	19-11-16	05-12-16	0%	6d/h	-315																
Deck 1 (P405-P406)																							
B4-100	B4 - Falsework & Base F/W (P405-P406)	14	11-11-16	26-11-16	0%	6d/h	-322																
Bridge 7																							
Bore Pile																							
B7-1000	B7 - Bore Pile P703-P705 (6 nos)	63	24-08-16	08-11-16	0%	6d/h	-398																
B7-1010	B7 - Bore Pile P706-A707 (4 nos)	63	27-09-16	10-12-16	0%	6d/h	-359																

■ Remaining Level of Effort ■ Remaining Work ▶ Summary
■ Actual Level of Effort ■ Critical Remaining Work
■ Actual Work ◆ Milestone

Date	Revision	C...	Approved
24-08-16 1...	monthly Report No. 25		

HKBCF Infrastructure (Western Portion) - Monthly Progress 25 - Three Month Rolling Programme

WPD011-MRP25



HKBCF Infrastructure (Western Portion) - Monthly Progress 25 - Three Month Rolling Programme

WPD011-MRP25

Activity ID	Activity Name	Original Start Date	Finish	Activity % Complete	Calendar	Total Float	2016															
							August	September	October	November	December											
D2(d) - to culvert C4		04	30-08-16	22-10-11	6d/h	-394																
D1-0120	Box C4.1 - M4E.9 (48m) 900mm	24	30-08-16	27-09-11	0%	6d/h	-394															
D1-0130	M4E.11 - M2E.1 (19m) 450mm	10	28-09-16	11-10-11	0%	6d/h	-394															
D1-0140	M4E.10 - M3E.2 (20m) 450mm	10	12-10-16	22-10-11	0%	6d/h	-394															
D2(a) - site entrance		31	22-10-16	28-11-11	6d/h	-493																
D1-0160	Box C1.1-M20E.6 (6m) 1050mm	10	24-10-16	03-11-11	0%	6d/h	-493															
D1-0170	M20E.6-M20E.4 (26m) 750mm	13	04-11-16	18-11-11	0%	6d/h	-493															
D1-0180	M20E.4-M20E.3 (16m) 600mm	8	19-11-16	28-11-11	0%	6d/h	-493															
D2(b) - next to HKR		35	24-10-16	02-12-11	6d/h	-391																
D1-0250	Box C1.2-M25E.A4 (18m) 900mm	10	24-10-16	03-11-11	0%	6d/h	-391															
D1-0260	M25E.5-M25E.A5 (14m) 300mm	7	04-11-16	11-11-11	0%	6d/h	-391															
D1-0270	M25E.5-M24E.5 (36m) 600mm	18	12-11-16	02-12-11	0%	6d/h	-391															
F(a) - Seawall Side		92	18-07-16	11-11-11	6d/h	-205																
D1-0490	M76A.23 - M53A.9 (44m) 1200mm	22	18-07-16	27-08-11	81.82%	6d/h	-203															
D1-0500	M76A.22 - M66A.6 (12m) 600mm	6	24-08-16	30-08-11	0%	6d/h	-205															
D1-0510	M76A.21 - M49A.11 (58m) 1200mm	29	31-08-16	05-10-11	0%	6d/h	-205															
D1-0520	M76A.20 - M67A.6 (17m) 900mm	9	06-10-16	17-10-11	0%	6d/h	-205															
D1-0525	M76A.A23 - M52A.10 (10m) 1050mm	5	18-10-16	22-10-11	0%	6d/h	-205															
D1-0530	M76A.19 - M68A.6 (34m) 1050mm	17	24-10-16	11-11-11	0%	6d/h	-205															
F(b) - from car park		57	27-09-16	03-12-11	6d/h	-205																
D1-0540	M76A.A19 - M45A.2 (39m) 450mm	20	27-09-16	21-10-11	0%	6d/h	-205															
D1-0550	M76A.A18 - M44A.4 (37m) 600mm	19	21-10-16	11-11-11	0%	6d/h	-205															
D1-0570	M76A.18 - M42A.15 (38m) 1200mm	19	12-11-16	03-12-11	0%	6d/h	-205															
Storm Drain about +1.3m (7m/day)		80	24-08-16	28-11-11	6d/h	-405																
A(1) - seawall next to B2		43	24-08-16	15-10-11	6d/h	-474																
D2-0010	M4E.8 - M4E.3 (183m) 750mm	26	24-08-16	23-09-11	0%	6d/h	-474															
D2-0020	M4E.3 - M4E.1 (71m) 600mm	11	24-08-16	07-10-11	0%	6d/h	-474															
D2-0600	M4E.7 - M1E.1 (39m) 300mm	6	08-10-16	15-10-11	0%	6d/h	-474															
B(1) - CLP to PCB		51	30-08-16	11-10-11	6d/h	-474																
D2-0070	M12E.3 - M12E.2 (35m) 600mm	5	30-08-16	03-09-11	0%	6d/h	-474															
D2-0080	M12E.2 - M12E.1 (41m) 450mm	6	17-10-16	22-10-11	0%	6d/h	-474															
D2-0085	M12E.2 - M12E.A2 (8m) 450mm	2	24-10-16	25-10-11	0%	6d/h	-474															
D2-0090	M31C.2 - M31C.1 (35m) 450mm	5	26-10-16	31-10-11	0%	6d/h	-474															
A(4) - after B2		41	08-10-16	28-11-11	6d/h	-474																
D2-0100	M61A.1 - M61A.4 (130m) 300mm	19	08-10-16	31-10-11	0%	6d/h	-474															
D2-0110	M66A.E1 - M66A.B1 (66m) 450mm	10	01-11-16	11-11-11	0%	6d/h	-474															
D2-0120	M66A.B1 - M66A.C1 (35m) 600mm	5	12-11-16	17-11-11	0%	6d/h	-474															
D2-0130	M66A.C1 - M66A.1 (60m) 750mm	9	18-11-16	28-11-11	0%	6d/h	-474															
D2(5) - from A1 to culvert C4		20	24-10-16	15-11-11	6d/h	-394																
D2-0370	M2E.1 - M2E.1A (33m) 300mm	5	24-10-16	28-10-11	0%	6d/h	-394															
D2-0380	M3E.2 - M3E.A1 (70m) 450mm	10	29-10-16	09-11-11	0%	6d/h	-394															
D2-0385	M4E.9 - M4E.8 (35m) 750mm	5	10-11-16	15-11-11	0%	6d/h	-394															
Watermain		70	24-08-16	16-11-11	6d/h	-149																
Fresh Watermain		70	24-08-16	16-11-11	6d/h	-149																
Portion A		70	24-08-16	16-11-11	6d/h	-149																
WM-1240	Fresh main H DN300 (CH700-CH1200) - Installation	42	24-08-16	14-10-11	0%	6d/h	-149															
WM-1250	Fresh main H DN300 (CH700-CH1200) - Testing & backfill	14	15-10-16	31-10-11	0%	6d/h	-149															
WM-1300	Fresh main P NS250 (CH217-CH50) - Installation	14	15-10-16	31-10-11	0%	6d/h	-149															
WM-1310	Fresh main P NS250 (CH217-CH50) - Testing & backfill	14	01-11-16	16-11-11	0%	6d/h	-149															
Utilities		485	28-03-15	11-01-17		798																
CLP Cable trench & duct		141	24-08-16	11-01-17	WP-7d	-491																
Portion A1 & A3		141	24-08-16	11-01-17	WP-7d	-491																



Date	Revision	C...	Approved
24-08-16 1...	monthly Report No. 25		



HKBCF Infrastructure (Western Portion) - Monthly Progress 25 - Three Month Rolling Programme

WPD01F-MRP25

Activity ID	Activity Name	Original Duration	Start	Finish	Activity % Complete	Calendar	Total Float	2016																																										
								August							September							October							November							December														
								24	31	07	14	21	28	04	11	18	25	02	09	16	23	30	06	13	20	27	04	11	18	25	01	08	15	22	29	05	12	19	26	02	09	16	23	30	06	13	20	27	04	11
UT-1000	CLP trench & Duct - bridge 2 to Sub-station	60	14-09-16	12-11-16	0%	WP-7d	-491	[Gantt bar from 14-09-16 to 12-11-16]																																										
UT-1010	CLP trench & Duct - bridge 2 to South Portion	60	13-11-16	11-01-17	0%	WP-7d	-491	[Gantt bar from 13-11-16 to 11-01-17]																																										
UT-1080	CHEC cross road duct for CLP works	21	24-08-16	13-09-16	0%	WP-7d	-491	[Gantt bar from 24-08-16 to 13-09-16]																																										
Cable Duct (TCSS, ELV & LV)																																																		
Portion 1																																																		
UT-1170	Cable duct for TCSS, ELV, LV & other department (I)	45	28-05-15	03-09-16	77.78%	6d/h	903	[Gantt bar from 28-05-15 to 03-09-16, 77.78% complete]																																										
Road Works																																																		
Road Furniture & Fit out																																																		
Prebone H-Pile & Cap for Sign Canopy																																																		
RW-1700	H-pile - GT405, FADS302, FADS301 (3x2x4 no.)	56	26-10-16	21-12-16	0%	WP-7d	-410	[Gantt bar from 26-10-16 to 21-12-16]																																										
Road Lighting Design & Submission																																																		
RW-2050	Submit & approval of road lighting system sub-contractor	60	24-08-16	04-11-16	0%	6d/h	-388	[Gantt bar from 24-08-16 to 04-11-16]																																										
RW-2060	Prepare, submit & approval of road lighting system design	60	19-10-16	29-12-16	0%	6d/h	-388	[Gantt bar from 19-10-16 to 29-12-16]																																										
Landscape																																																		
Submit & design of Irrigation system																																																		
RW-2020	Prepare, submit & approval of Irrigation System sub-contract	120	24-08-16	21-12-16	0%	WP-7d	-421	[Gantt bar from 24-08-16 to 21-12-16]																																										

▬ Remaining Level of Effort ▬ Remaining Work ▬ Summary
▬ Actual Level of Effort ▬ Critical Remaining Work
▬ Actual Work ◆ Milestone

Date	Revision	C...	Approved
24-08-16 1...	monthly Report No. 25		