

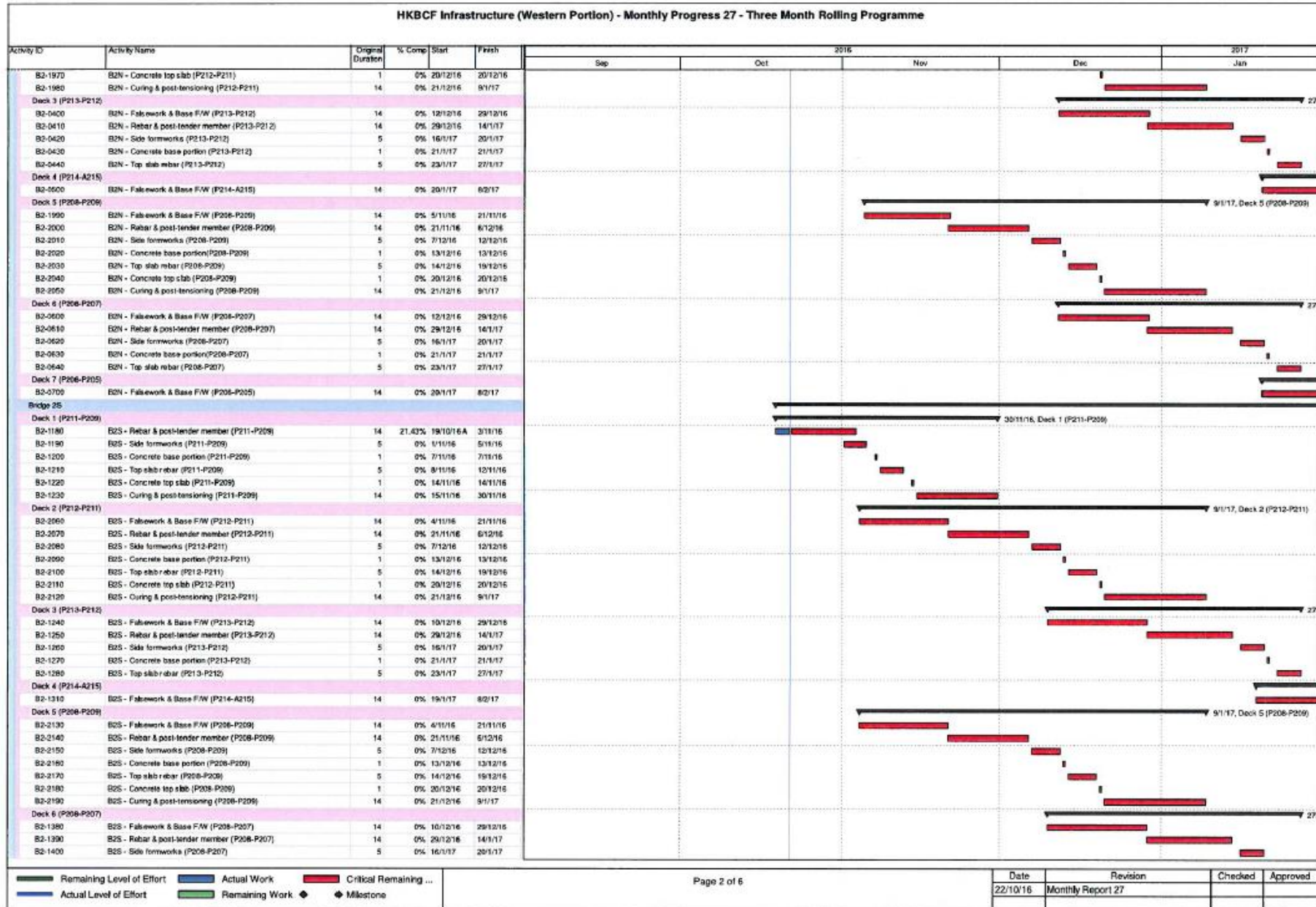
HKBCF Infrastructure (Western Portion) - Monthly Progress 27 - Three Month Rolling Programme

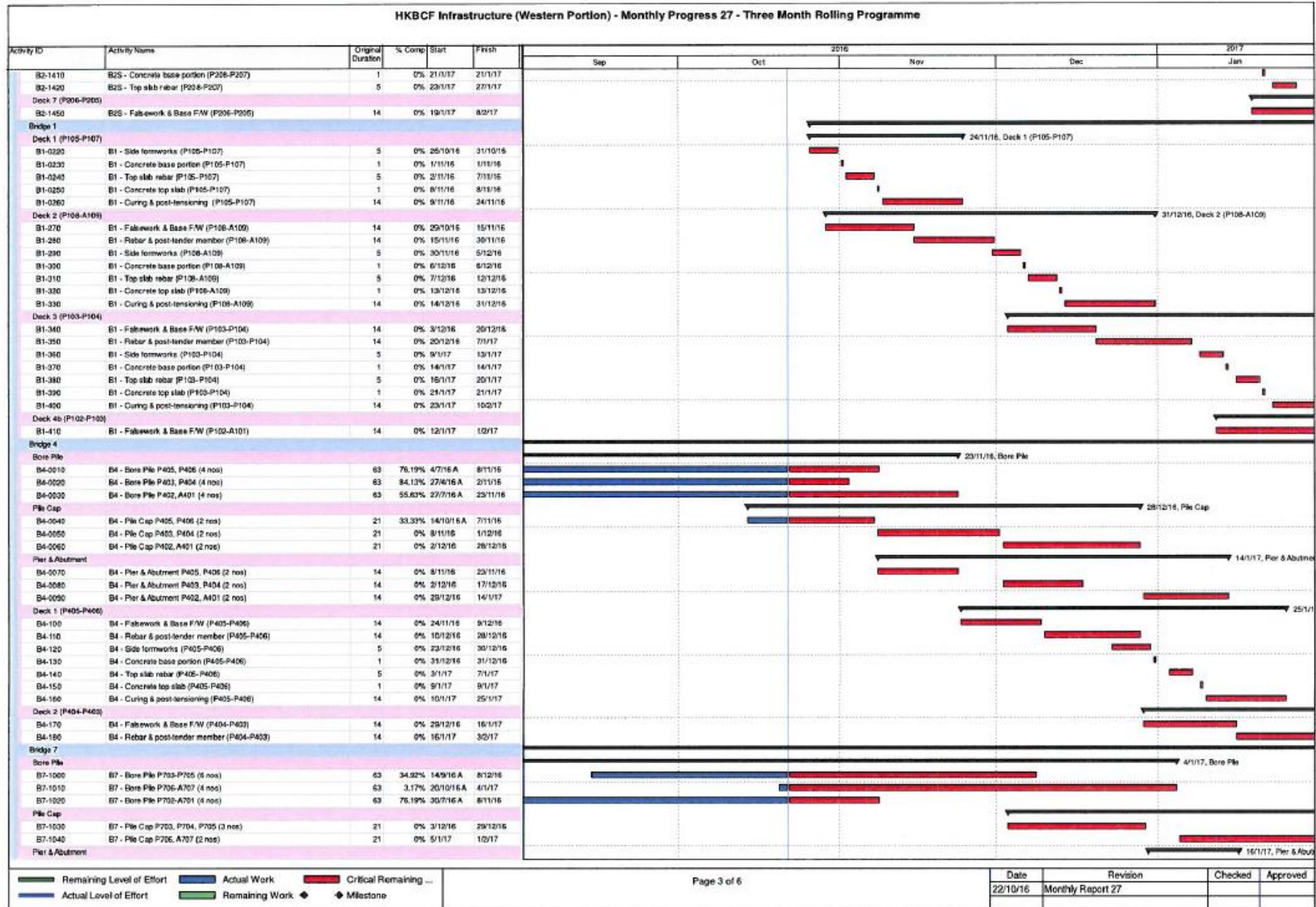
Activity ID	Activity Name	Original Duration	% Comp	Start	Finish	2016					2017	
						Sep	Oct	Nov	Dec	Jan		
HKBCF Infrastructure (Western Portion) - Monthly Progress 27												
Preliminaries												
Contractual Date												17/1/17, Preliminary
Key Date												17/1/17, Contract
KD12	KD12-All works not within KD11, KD13-KD16 (COW+880d)	0	0%	20/12/16*							▼ 20/12/16, Key Date	
KD14	KD14-Preservation & Protection of Tree (COW+880d)	0	0%	20/12/16*							◆ KD12-All works not within KD11, KD13-KD16 (COW+880d) ◆ KD14-Preservation & Protection of Tree (COW+880d)	
Handover												
HA1	Handover of Portion A1 (KD12+28d)	0	0%	17/1/17							▼ 17/1/17, Handover	
HA3	Handover of Portion A3 (KD12+28d)	0	0%	17/1/17							◆ Handover of Portion	
HA4	Handover of Portion A4 (KD12+28d)	0	0%	17/1/17							◆ Handover of Portion	
HB1	Handover of Portion B1 (KD12+28d)	0	0%	17/1/17							◆ Handover of Portion	
HB4	Handover of Portion B4 (KD12+28d)	0	0%	17/1/17							◆ Handover of Portion	
HC1	Handover of Portion C1 (KD12+28d)	0	0%	17/1/17							◆ Handover of Portion	
HC2	Handover of Portion C2 (KD12+28d)	0	0%	17/1/17							◆ Handover of Portion	
HD1	Handover of Portion D1 (KD12+28d)	0	0%	17/1/17							◆ Handover of Portion	
HD2	Handover of Portion D2 (KD12+28d)	0	0%	17/1/17							◆ Handover of Portion	
HE1	Handover of Portion E (KD12+28d)	0	0%	17/1/17							◆ Handover of Portion	
HF1	Handover of Portion F (KD12+28d)	0	0%	17/1/17							◆ Handover of Portion	
HG1	Handover of Portion G (KD12+28d)	0	0%	17/1/17							◆ Handover of Portion	
HI1	Handover of Portion I (KD12+28d)	0	0%	17/1/17							◆ Handover of Portion	
Alternative Design - Bridge Works												
Bridge B7												
A3-180	B7 Substructure - Cap const work start	0	0%	3/12/16							▼ 3/12/16, Bridge B7	
Bridge B8												
A3-200	B8 Substructure - Cap const work start	0	0%	5/1/17							▼ 5/1/17, Bridge B8	
Bridge Structure												
Bridge 3												
Deck 1 (P305-P304)												
B3-0080	B3 - Rebar & post-tension member (P305-P304)	14	0%	29/10/16	14/1/16							
B3-0090	B3 - Side formworks (P305-P304)	5	0%	11/11/16	16/1/16							
B3-0100	B3 - Concrete base portion (P305-P304)	1	0%	17/11/16	17/1/16							
B3-0110	B3 - Top slab rebar (P305-P304)	5	0%	18/11/16	23/1/16							
B3-0120	B3 - Concrete top slab (P305-P304)	1	0%	24/11/16	24/1/16							
B3-0140	B3 - Curing & post-tensioning (P305-P304)	14	0%	25/11/16	10/1/16							
Deck 2 (P304-P303)												
B3-0205	B3 - Falsework & Base F/W (P304-P303)	14	0%	15/11/16	1/12/16							
B3-0215	B3 - Rebar & post-tension member (P304-P303)	14	0%	1/12/16	16/12/16							
B3-0225	B3 - Side formworks (P304-P303)	5	0%	16/12/16	21/12/16							
B3-0235	B3 - Concrete base portion (P304-P303)	1	0%	22/12/16	22/12/16							
B3-0245	B3 - Top slab rebar (P304-P303)	5	0%	23/12/16	30/12/16							
B3-0255	B3 - Concrete top slab (P304-P303)	1	0%	31/12/16	31/12/16							
B3-0265	B3 - Curing & post-tensioning (P304-P303)	14	0%	3/1/17	18/1/17							
Deck 3 (P303-P302)												
B3-0305	B3 - Falsework & Base F/W (P303-P302)	14	0%	28/12/16	9/1/17							
B3-0315	B3 - Rebar & post-tension member (P303-P302)	14	0%	9/1/17	24/1/17							
B3-0325	B3 - Side formworks (P303-P302)	5	0%	24/1/17	1/2/17							
Deck 4 (P302-A301)												
B3-0400	B3 - Falsework & Base F/W (P302-A301)	14	0%	27/1/17	16/2/17							
Bridge 2N												
Deck 1 (P211-P209)												
B2-0310	B2N - Rebar & post-tension member (P211-P209)	14	21.43%	19/10/16 A	3/11/16							
B2-0320	B2N - Side formworks (P211-P209)	5	0%	1/11/16	5/1/16							
B2-0330	B2N - Concrete base portion (P211-P209)	1	0%	7/11/16	7/1/16							
B2-0340	B2N - Top slab rebar (P211-P209)	5	0%	8/11/16	12/1/16							
B2-0350	B2N - Concrete top slab (P211-P209)	1	0%	14/11/16	14/1/16							
B2-0360	B2N - Curing & post-tensioning (P211-P209)	14	0%	15/11/16	30/1/16							
Deck 2 (P212-P211)												
B2-1920	B2N - Falsework & Base F/W (P212-P211)	14	0%	5/11/16	21/1/16							
B2-1930	B2N - Rebar & post-tension member (P212-P211)	14	0%	21/11/16	6/12/16							
B2-1940	B2N - Side formworks (P212-P211)	5	0%	7/12/16	12/12/16							
B2-1950	B2N - Concrete base portion (P212-P211)	1	0%	13/12/16	13/12/16							
B2-1960	B2N - Top slab rebar (P212-P211)	5	0%	14/12/16	19/12/16							

█ Remaining Level of Effort
 █ Actual Work
 █ Critical Remaining ...
█ Actual Level of Effort
 █ Remaining Work
 ◆ ◆ Milestone

Date	Revision	Checked	Approved
22/10/16	Monthly Report 27		

HKBCF Infrastructure (Western Portion) - Monthly Progress 27 - Three Month Rolling Programme





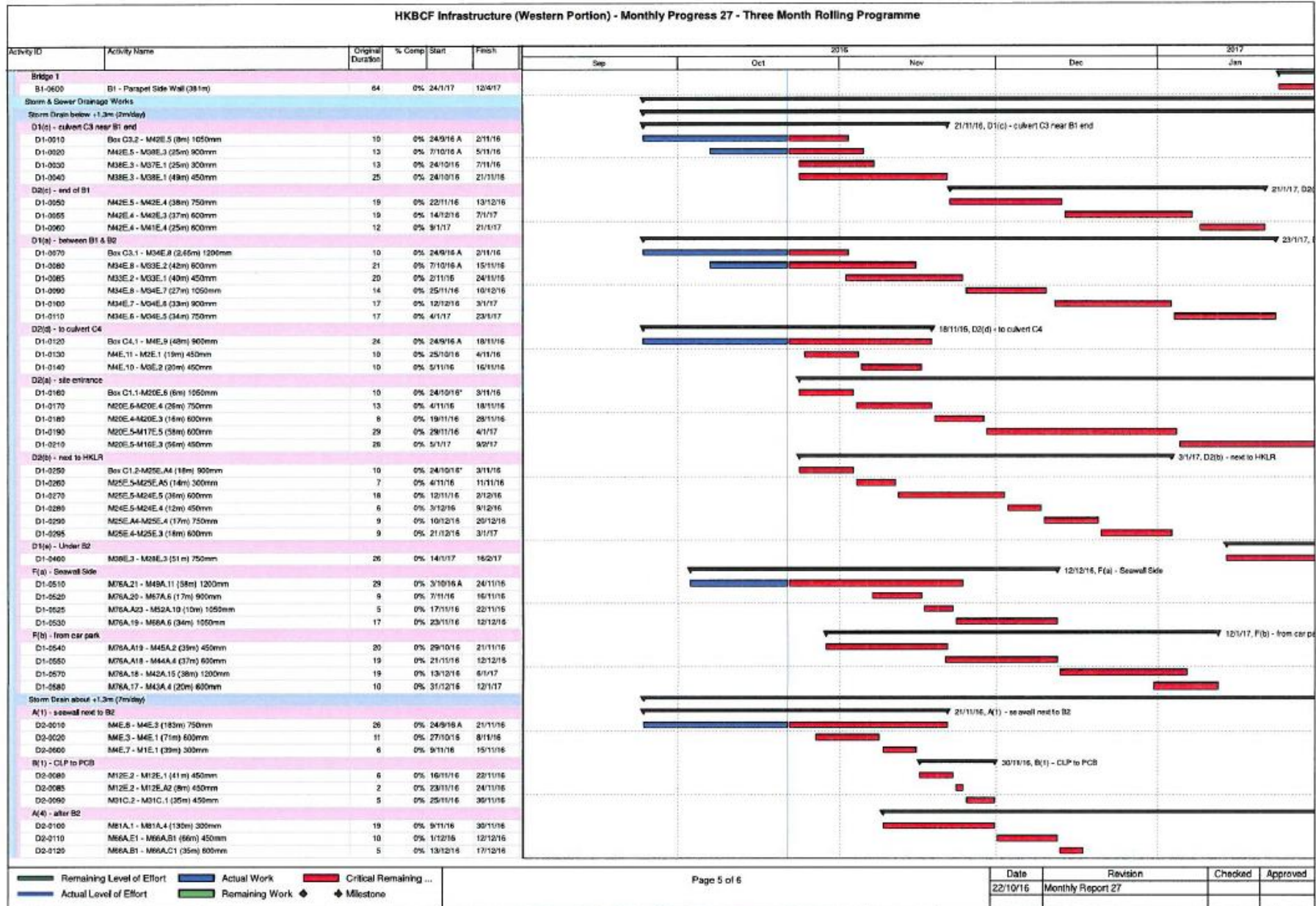
HKBCF Infrastructure (Western Portion) - Monthly Progress 27 - Three Month Rolling Programme

Activity ID	Activity Name	Original Duration	% Comp.	Start	Finish	2016				2017	
						Sep	Oct	Nov	Dec	Jan	
B7-1060	B7 - Pier & Abutment P703, P704, P705 (3 nos)	14	0%	30/12/16	16/1/17						
Deck 1 (P703-P705)											
B7-1090	B7 - Falsework & Base F/W (P703-P705)	14	0%	17/1/17	4/2/17						
Bridge 8											
Bore Pile											
B8-1000	B8 - Bore Pile P803, P804 (4 nos)	63	3.17%	20/10/16 A	4/1/17						
B8-1010	B8 - Bore Pile P805, A806 (4 nos)	63	0%	22/11/16	9/2/17						
B8-1020	B8 - Bore Pile P802, A801 (4 nos)	63	0%	24/12/16	14/3/17						
Pile Cap											
B8-1030	B8 - Pile Cap P803, P804 (2 nos)	21	0%	5/1/17	1/2/17						
Bridge 9											
Bore Pile											
B8-1010	B8 - Bore Pile P804, A805 (4 nos)	63	84.13%	12/5/16 A	2/11/16						
Pile Cap											
B8-1050	B8 - Pile cap P804, A805 (2 nos)	21	38.1%	13/10/16 A	5/11/16						
Pier & Abutment											
B8-1090	B8 - Pier & Abutment P804, A805 (2 nos)	14	0%	7/11/16	22/11/16						
Deck 1 (A801-P802)											
B8-1120	B8 - Falsework & Base F/W (A801-P802)	14	0%	29/10/16	14/11/16						
B8-1130	B8 - Rebar & post-tender member (A801-P802)	14	0%	15/11/16	30/11/16						
B8-1140	B8 - Side formworks (A801-P802)	5	0%	28/11/16	2/12/16						
B8-1150	B8 - Concrete base portion (A801-P802)	1	0%	3/12/16	3/12/16						
B8-1160	B8 - Top slab rebar (A801-P802)	5	0%	5/12/16	9/12/16						
B8-1170	B8 - Concrete top slab (A801-P802)	1	0%	10/12/16	10/12/16						
B8-1180	B8 - Curing & post-tensioning (A801-P802)	14	0%	12/12/16	26/12/16						
Deck 2 (P802-P803)											
B8-1190	B8 - Falsework & Base F/W (P802-P803)	14	0%	28/11/16	14/12/16						
B8-1200	B8 - Rebar & post-tender member (P802-P803)	17	0%	14/12/16	5/1/17						
B8-1210	B8 - Side formworks (P802-P803)	5	0%	3/1/17	7/1/17						
B8-1220	B8 - Concrete base portion (P802-P803)	1	0%	8/1/17	8/1/17						
B8-1230	B8 - Top slab rebar (P802-P803)	5	0%	10/1/17	14/1/17						
B8-1240	B8 - Concrete top slab (P802-P803)	1	0%	16/1/17	16/1/17						
B8-1250	B8 - Curing & post-tensioning (P802-P803)	14	0%	17/1/17	4/2/17						
Deck 3 (P803-P804)											
B8-1260	B8 - Falsework & Base F/W (P803-P804)	14	0%	6/1/17	23/1/17						
B8-1270	B8 - Rebar & post-tender member (P803-P804)	14	0%	23/1/17	10/2/17						
Bridge 5											
Bore Pile											
B5-1020	B5 - Bore Pile P504-P505 (4 nos)	63	87.3%	6/5/16 A	3/10/16						
Pile Cap											
B5-1070	B5 - Pile Cap P507, A508 (2 nos)	21	0%	22/10/16	15/11/16						
Pier & Abutment											
B5-1100	B5 - Pier & Abutment P505, P504 (2 nos)	14	0%	22/10/16	7/11/16						
B5-1110	B5 - Pier & Abutment P507, A508 (2 nos)	14	0%	16/11/16	1/12/16						
Deck 1 (P501-P502)											
B5-1400	B5 - Falsework & Base F/W (P501-P502)	14	0%	26/1/17	14/2/17						
Deck 3 (P501b-P504)											
B5-1540	B5 - Falsework & Base F/W (P501b-P504)	14	0%	26/1/17	14/2/17						
Auxiliary Structure											
Retaining Wall, Slope & Earth Works											
Bridge 6											
B6-2010	Retaining Wall WS-1 (Bay 1)	21	0%	14/1/17	10/2/17						
B6-2020	Retaining Wall WS-1 (Bay 2)	21	0%	17/12/16	13/1/17						
B6-2030	Retaining Wall WS-1 (Bay 3)	21	0%	14/1/17	10/2/17						
B6-2040	Retaining Wall WS-1 (Bay 4)	21	0%	17/12/16	13/1/17						
B6-2050	Retaining Wall WS-1 (Bay 5)	21	0%	14/1/17	10/2/17						
Bridge 5											
B5-2110	Retaining Wall WS-2 (Bay 4)	21	0%	24/12/16	20/1/17						
B5-2120	Retaining Wall WS-2 (Bay 3)	21	0%	21/1/17	17/2/17						
B5-2150	Retaining Wall WS-2 (Bay 5)	21	0%	21/1/17	17/2/17						
B5-2160	Retaining Wall WS-2 (Bay 6)	21	0%	24/12/16	20/1/17						
Parapet & Barrier											

█ Remaining Level of Effort
 █ Actual Work
 █ Critical Remaining ...
█ Actual Level of Effort
 █ Remaining Work
 ◆ Milestone

Date	Revision	Checked	Approved
22/10/16	Monthly Report 27		

HKBCF Infrastructure (Western Portion) - Monthly Progress 27 - Three Month Rolling Programme



HKBCF Infrastructure (Western Portion) - Monthly Progress 27 - Three Month Rolling Programme

Activity ID	Activity Name	Original Duration	% Comp	Start	Finish	2016					2017
						Sep	Oct	Nov	Dec	Jan	
D2-0130	M66A.C1 - M66A.1 (60m) 750mm	9	0%	18/12/16	30/12/16						
D2-0140	M77A.A1 - M77A.1 (25m) 300mm	4	0%	31/12/16	5/1/17						
D2-0150	M77A.1 - M77A.2 (35m) 450mm	5	0%	6/1/17	11/1/17						
D2-0160	M77A.2 - M77A.4 (70m) 600mm	10	0%	12/1/17	23/1/17						
D2-0170	M66A.1 - M66A.2 (37m) 900mm	6	0%	24/1/17	22/2/17						
D2(4) - legn A1 to culvert C4											
D2-0370	M2E.1 - M2E.1A (33m) 300mm	5	0%	17/11/16	22/11/16						
D2-0380	M3E.2 - M3E.A1 (70m) 450mm	10	0%	23/11/16	3/12/16						
D2-0385	M4E.9 - M4E.8 (35m) 750mm	5	0%	5/12/16	9/12/16						
D2(2) - road to HKLR											
D2-0510	M2SE.4 - M2SE.1 (27m) 300mm	4	0%	4/1/17	7/1/17						
D2-0513	M2SE.4 - M2SE.1 (36m) 450mm	13	0%	9/1/17	23/1/17						
D2-0516	M2SE.3 - M2E.1 (18m) 300mm	3	0%	24/1/17	26/1/17						
D2-0520	M2SE.3 - M2SE.2 (44m) 450mm	7	0%	27/1/17	7/2/17						
C1(1) - Car park											
D2-0830	M44A.4 - M44A.3 (49m) 600mm	6	0%	30/12/16	6/1/17						
D2-0840	M44A.3 - M44A.1 (95m) 450mm	14	0%	7/1/17	23/1/17						
D2-0950	M42A.15 - M42A.13 (39m) 1050mm	6	0%	24/1/17	22/2/17						
C2(1) - B4											
D2-0980	M80A.7 - M80A.4 (112m) 450mm	17	0%	29/12/16	16/1/17						
D2-0990	M80A.4 - M80A.1 (117m) 302mm	17	0%	19/1/17	10/2/17						
Watermain											
Fresh Watermain											
Portion A											
WM-1240	Fresh main HDN300 (CH700-CH1200) - Installation	42	0%	22/10/16	9/12/16						
WM-1250	Fresh main HDN300 (CH700-CH1200) - Testing & backfill	14	0%	15/11/16	30/11/16						
WM-1300	Fresh main P NS250 (CH217-CH50) - Installation	14	0%	15/11/16	30/11/16						
WM-1310	Fresh main P NS250 (CH217-CH50) - Testing & backfill	14	0%	1/12/16	16/12/16						
Utilities											
CLP Cable trench & duct											
Portion A1 & A3											
UT-1000	CLP trench & Duct - bridge 2 to Sub-station	60	23.33%	8/10/16 A	6/12/16						
UT-1010	CLP trench & Duct - bridge 2 to South Portion	60	0%	7/12/16	4/2/17						
Portion D1 & D2											
UT-1030	CLP trench & Duct - along bridge 2 (sloping seawall)	90	69.5%	20/6/16 A	18/11/16						
UT-1040	CLP trench & Duct - Site entrance to bridge 2 portion D2	60	0%	23/11/16	21/1/17						
Road Works											
Road Furniture & Fit out											
Prebore H-Pile & Cap for Sign Gantry											
RW-1700	H-pile - GT405, FADS302, FADS301 (3x2x4 no.)	56	0%	23/11/16	18/1/17						
RW-1710	H-pile - GT500, GT119, DS301 (7x4 no.)	70	0%	22/12/16	13/1/17						
RW-1740	Cap - GT405, FADS302, FADS301 (3x2 no.)	42	0%	12/1/17	22/2/17						
Road Lighting Design & Submission											
RW-2050	Submit & approval of road lighting system sub-contractor	60	36.67%	24/9/16 A	5/12/16						
RW-2060	Prepare, submit & approval of road lighting system design	60	0%	18/11/16	2/2/17						
RW-2070	Submit & approval of road lighting system material	90	0%	23/12/16	18/4/17						
Landscape											
Sublet & design of Irrigation system											
RW-2030	Prepare, submit & approval of Irrigation System sub-contractor	120	23.33%	24/9/16 A	21/1/17						
RW-2030	prepare, submit & approval of irrigation system design	120	0%	22/1/17	21/5/17						

■ Remaining Level of Effort
 ■ Actual Work
 ■ Critical Remaining ...
■ Actual Level of Effort
 ■ Remaining Work
 ◆ Milestone

Date	Revision	Checked	Approved
22/10/16	Monthly Report 27		