

HKBCF Infrastructure (Western Portion) - Monthly Progress 29 - Three Month Rolling Programme

Activity ID	Activity Name	Critical Duration	% Comp.	2016				2017					
				Dec	Jan	Feb	Mar	Dec	Jan	Feb	Mar		
HKBCF Infrastructure (Western Portion) - Monthly Progress 29													
Preliminaries													
Construction Date													
Key Dates													
KD12	KD12-All works not within KD11, KD13-KD16 (COW+800)	0	100%					◆ KD12-All works not within KD11, KD13-KD16 (COW+800)					
KD14	KD14-Preservation & Protection of Tree (COW+800)	0	100%					◆ KD14-Preservation & Protection of Tree (COW+800)					
Handover													
HA1	Handover of Portion A1 (KD12+280)	0	0%					◆ Handover of Portion A1 (KD12+280)					
HA2	Handover of Portion A2 (KD12+280)	0	0%					◆ Handover of Portion A2 (KD12+280)					
HA4	Handover of Portion A4 (KD12+280)	0	0%					◆ Handover of Portion A4 (KD12+280)					
HB1	Handover of Portion B1 (KD12+280)	0	0%					◆ Handover of Portion B1 (KD12+280)					
HB4	Handover of Portion B4 (KD12+280)	0	0%					◆ Handover of Portion B4 (KD12+280)					
HC1	Handover of Portion C1 (KD12+280)	0	0%					◆ Handover of Portion C1 (KD12+280)					
HC2	Handover of Portion C2 (KD12+280)	0	0%					◆ Handover of Portion C2 (KD12+280)					
HD1	Handover of Portion D1 (KD12+280)	0	0%					◆ Handover of Portion D1 (KD12+280)					
HD2	Handover of Portion D2 (KD12+280)	0	0%					◆ Handover of Portion D2 (KD12+280)					
HE1	Handover of Portion E (KD12+280)	0	0%					◆ Handover of Portion E (KD12+280)					
HF1	Handover of Portion F (KD12+280)	0	0%					◆ Handover of Portion F (KD12+280)					
HG1	Handover of Portion G (KD12+280)	0	0%					◆ Handover of Portion G (KD12+280)					
HI1	Handover of Portion I (KD12+280)	0	0%					◆ Handover of Portion I (KD12+280)					
Alternative Design - Bridge Works													
Bridge B7													
A3-1880	B7 Substructure - Cap concrete work start	0	100%					◆ B7 Substructure - Cap concrete work start					
Bridge B8													
A3-2080	B8 Substructure - Cap concrete work start	0	0%					◆ B8 Substructure - Cap concrete work start					
Bridge Structure													
Bridge 1													
Deck 1 (P305-P304)													
B3-0140	B3 - Curing & post-tensioning (P305-P304)	14	100%	10/Dec/16 A, B3 - Curing & post-tensioning (P305-P304)									
Deck 2 (P304-P303)													
B3-0330	B3 - Concrete base portion (P304-P303)	1	0%	22/Dec/16 B3 - Concrete base portion (P304-P303)									
B3-0250	B3 - Concrete top slab (P304-P303)	1	0%	31/Dec/16 B3 - Concrete top slab (P304-P303)									
B3-0280	B3 - Curing & post-tensioning (P304-P303)	14	0%	3/Jan/17 B3 - Curing & post-tensioning (P304-P303)									
B3-0290	B3 - Fabricwork & Base F/W (P304-P303)	14	100%	30/Nov/16 A, B3 - Fabricwork & Base F/W (P304-P303)									
B3-0210	B3 - Rebar & post-tension member (P304-P303)	14	100%	16/Dec/16 A, B3 - Rebar & post-tension member (P304-P303)									
B3-0220	B3 - Side formwork (P304-P303)	5	80%	16/Dec/16 B3 - Side formwork (P304-P303)									
B3-0240	B3 - Top slab rebar (P304-P303)	5	0%	22/Dec/16 B3 - Top slab rebar (P304-P303)									
Deck 3 (P303-P302)													
B3-0330	B3 - Concrete base portion (P303-P302)	1	0%	2/Jan/17 B3 - Concrete base portion (P303-P302)									
B3-0350	B3 - Concrete top slab (P303-P302)	1	0%	9/Jan/17 B3 - Concrete top slab (P303-P302)									
B3-0360	B3 - Curing & post-tensioning (P303-P302)	14	0%	10/Jan/17 B3 - Curing & post-tensioning (P303-P302)									
B3-0380	B3 - Fabricwork & Base F/W (P303-P302)	14	14%	20/Dec/16 A B3 - Fabricwork & Base F/W (P303-P302)									
B3-0310	B3 - Rebar & post-tension member (P303-P302)	14	0%	9/Jan/17 B3 - Rebar & post-tension member (P303-P302)									
B3-0320	B3 - Side formwork (P303-P302)	5	0%	24/Jan/17 B3 - Side formwork (P303-P302)									
B3-0340	B3 - Top slab rebar (P303-P302)	5	0%	3/Jan/17 B3 - Top slab rebar (P303-P302)									
Deck 4 (P302-A301)													
B3-0430	B3 - Fabricwork & Base F/W (P302-A301)	14	0%	27/Jan/17 B3 - Fabricwork & Base F/W (P302-A301)									
B3-0410	B3 - Rebar & post-tension member (P302-A301)	14	0%	16/Jan/17 B3 - Rebar & post-tension member (P302-A301)									
Bridge 2N													
Deck 1 (P211-P209)													
B2-0360	B2N - Curing & post-tensioning (P211-P209)	14	100%	30/Nov/16 A, B2N - Curing & post-tensioning (P211-P209)									
Deck 2 (P212-P211)													
B2-1950	B2N - Concrete base portion (P212-P211)	1	100%	13/Dec/16 A, B2N - Concrete base portion (P212-P211)									
B2-1970	B2N - Concrete top slab (P212-P211)	1	100%	20/Dec/16 A, B2N - Concrete top slab (P212-P211)									
B2-1980	B2N - Curing & post-tensioning (P212-P211)	14	0%	31/Dec/16 A B2N - Curing & post-tensioning (P212-P211)									
B2-1930	B2N - Rebar & post-tension member (P212-P211)	14	100%	9/Jan/17 B2N - Rebar & post-tension member (P212-P211)									
B2-1940	B2N - Side formwork (P212-P211)	5	100%	7/Dec/16 A B2N - Side formwork (P212-P211)									
B2-1960	B2N - Top slab rebar (P212-P211)	5	100%	14/Dec/16 A B2N - Top slab rebar (P212-P211)									
Deck 3 (P213-P212)													
B2-9430	B2N - Concrete base portion (P213-P212)	1	0%	25/Jan/17 B2N - Concrete base portion (P213-P212)									
B2-9450	B2N - Concrete top slab (P213-P212)	1	0%	1/Jan/17 B2N - Concrete top slab (P213-P212)									
B2-9460	B2N - Curing & post-tensioning (P213-P212)	14	0%	3/Jan/17 B2N - Curing & post-tensioning (P213-P212)									
B2-9400	B2N - Fabricwork & Base F/W (P213-P212)	14	54%	12/Dec/16 A B2N - Fabricwork & Base F/W (P213-P212)									
B2-9410	B2N - Rebar & post-tension member (P213-P212)	14	0%	14/Jan/17 B2N - Rebar & post-tension member (P213-P212)									
B2-9420	B2N - Side formwork (P213-P212)	5	0%	16/Jan/17 B2N - Side formwork (P213-P212)									
B2-9440	B2N - Top slab rebar (P213-P212)	5	0%	22/Jan/17 B2N - Top slab rebar (P213-P212)									
Deck 4 (P214-A215)													
B2-2000	B2N - Fabricwork & Base F/W (P214-A215)	14	0%	20/Jan/17 B2N - Fabricwork & Base F/W (P214-A215)									
B2-0510	B2N - Rebar & post-tension member (P214-A215)	14	0%	8/Jan/17 B2N - Rebar & post-tension member (P214-A215)									
B2-0520	B2N - Side formwork (P214-A215)	5	0%	23/Jan/17 B2N - Side formwork (P214-A215)									
Deck 5 (P208-P206)													
B2-2020	B2N - Concrete base portion (P208-P206)	1	100%	13/Dec/16 A, B2N - Concrete base portion (P208-P206)									
B2-2040	B2N - Concrete top slab (P208-P206)	1	100%	20/Dec/16 A, B2N - Concrete top slab (P208-P206)									

█ Remaining Level of Effort
 █ Actual Work
 █ Critical Remaining ...
█ Actual Level of Effort
 █ Remaining Work
 ◆ Milestone

Date	Revision	Checked	Approved
21/Dec/16	Monthly Progress 29		

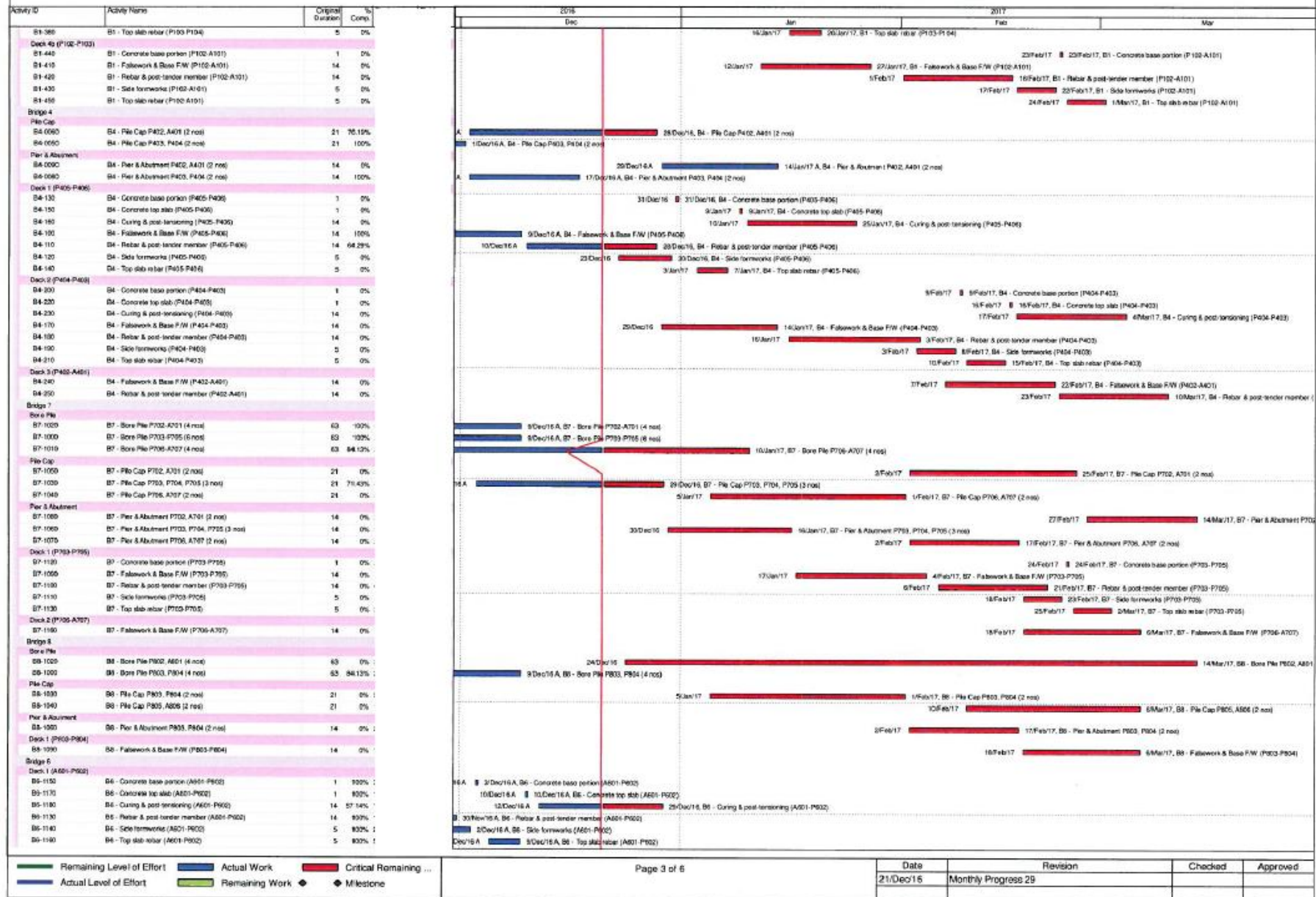
HKBCF Infrastructure (Western Portion) - Monthly Progress 29 - Three Month Rolling Programme

Activity ID	Activity Name	Original Duration	% Comp	2017											
				Dec	Jan	Feb	Mar	Apr	May	Jun	Jul	Aug	Sep	Oct	Nov
B2-2050	B2N - Curing & post-tensioning (P206-P209)	14	0%	9-Jan-17, B2N - Curing & post-tensioning (P206-P209)											
B2-2050	B2N - Rebar & post-tender member (P206-P209)	14	100%	5-Dec-16 A, B2N - Rebar & post-tender member (P206-P209)											
B2-2010	B2N - Side formworks (P206-P209)	5	100%	7-Dec-16 A, B2N - Side formworks (P206-P209)											
B2-2030	B2N - Top slab rebar (P206-P209)	5	100%	14-Dec-16 A, B2N - Top slab rebar (P206-P209)											
Deck 6 (P206-P207)															
B2-9630	B2N - Concrete base portion (P206-P207)	1	0%	21-Jan-17, B2N - Concrete base portion (P206-P207)											
B2-9650	B2N - Concrete top slab (P206-P207)	1	0%	1-Feb-17, B2N - Concrete top slab (P206-P207)											
B2-9660	B2N - Curing & post-tensioning (P206-P207)	14	0%	2-Feb-17, B2N - Curing & post-tensioning (P206-P207)											
B2-9670	B2N - Formwork & Base FW (P206-P207)	14	57.14%	12-Dec-16 A, B2N - Formwork & Base FW (P206-P207)											
B2-9610	B2N - Rebar & post-tender member (P206-P207)	14	0%	29-Dec-16, B2N - Rebar & post-tender member (P206-P207)											
B2-9620	B2N - Side formworks (P206-P207)	5	0%	16-Jan-17, B2N - Side formworks (P206-P207)											
B2-9640	B2N - Top slab rebar (P206-P207)	5	0%	23-Jan-17, B2N - Top slab rebar (P206-P207)											
Deck 7 (P206-P205)															
B2-0700	B2N - Formwork & Base FW (P205-P205)	14	0%	29-Jan-17, B2N - Formwork & Base FW (P205-P205)											
B2-0710	B2N - Rebar & post-tender member (P205-P205)	14	0%	8-Feb-17, B2N - Rebar & post-tender member (P205-P205)											
B2-0720	B2N - Side formworks (P205-P205)	5	0%	24-Feb-17, B2N - Side formworks (P205-P205)											
Bridge 25															
Deck 1 (P211-P209)															
B2-1050	B2S - Curing & post-tensioning (P211-P209)	14	100%	30-Nov-16 A, B2S - Curing & post-tensioning (P211-P209)											
Deck 2 (P212-P211)															
B2-2040	B2S - Concrete base portion (P212-P211)	1	100%	13-Dec-16 A, B2S - Concrete base portion (P212-P211)											
B2-2110	B2S - Concrete top slab (P212-P211)	1	100%	20-Dec-16 A, B2S - Concrete top slab (P212-P211)											
B2-2120	B2S - Curing & post-tensioning (P212-P211)	14	0%	21-Dec-16, B2S - Curing & post-tensioning (P212-P211)											
B2-2070	B2S - Rebar & post-tender member (P212-P211)	14	100%	5-Dec-16 A, B2S - Rebar & post-tender member (P212-P211)											
B2-2060	B2S - Side formworks (P212-P211)	5	100%	7-Dec-16 A, B2S - Side formworks (P212-P211)											
B2-2100	B2S - Top slab rebar (P212-P211)	5	100%	14-Dec-16 A, B2S - Top slab rebar (P212-P211)											
Deck 3 (P213-P212)															
B2-1270	B2S - Concrete base portion (P213-P212)	1	0%	21-Jan-17, B2S - Concrete base portion (P213-P212)											
B2-1290	B2S - Concrete top slab (P213-P212)	1	0%	1-Feb-17, B2S - Concrete top slab (P213-P212)											
B2-1300	B2S - Curing & post-tensioning (P213-P212)	14	0%	2-Feb-17, B2S - Curing & post-tensioning (P213-P212)											
B2-1240	B2S - Formwork & Base FW (P213-P212)	14	64.29%	10-Dec-16 A, B2S - Formwork & Base FW (P213-P212)											
B2-1250	B2S - Rebar & post-tender member (P213-P212)	14	0%	29-Dec-16, B2S - Rebar & post-tender member (P213-P212)											
B2-1260	B2S - Side formworks (P213-P212)	5	0%	16-Jan-17, B2S - Side formworks (P213-P212)											
B2-1280	B2S - Top slab rebar (P213-P212)	5	0%	23-Jan-17, B2S - Top slab rebar (P213-P212)											
Deck 4 (P214-A215)															
B2-1310	B2S - Formwork & Base FW (P214-A215)	14	0%	19-Jan-17, B2S - Formwork & Base FW (P214-A215)											
B2-1320	B2S - Rebar & post-tender member (P214-A215)	14	0%	8-Feb-17, B2S - Rebar & post-tender member (P214-A215)											
B2-1330	B2S - Side formworks (P214-A215)	5	0%	24-Feb-17, B2S - Side formworks (P214-A215)											
Deck 5 (P208-P209)															
B2-2190	B2S - Concrete base portion (P208-P209)	1	100%	13-Dec-16 A, B2S - Concrete base portion (P208-P209)											
B2-2190	B2S - Concrete top slab (P208-P209)	1	100%	20-Dec-16 A, B2S - Concrete top slab (P208-P209)											
B2-2190	B2S - Curing & post-tensioning (P208-P209)	14	0%	21-Dec-16, B2S - Curing & post-tensioning (P208-P209)											
B2-2140	B2S - Rebar & post-tender member (P208-P209)	14	100%	4-Dec-16 A, B2S - Rebar & post-tender member (P208-P209)											
B2-2150	B2S - Side formworks (P208-P209)	5	100%	7-Dec-16 A, B2S - Side formworks (P208-P209)											
B2-2170	B2S - Top slab rebar (P208-P209)	5	100%	14-Dec-16 A, B2S - Top slab rebar (P208-P209)											
Deck 6 (P206-P207)															
B2-1410	B2S - Concrete base portion (P206-P207)	1	0%	21-Jan-17, B2S - Concrete base portion (P206-P207)											
B2-1430	B2S - Concrete top slab (P206-P207)	1	0%	1-Feb-17, B2S - Concrete top slab (P206-P207)											
B2-1440	B2S - Curing & post-tensioning (P206-P207)	14	0%	2-Feb-17, B2S - Curing & post-tensioning (P206-P207)											
B2-1380	B2S - Formwork & Base FW (P206-P207)	14	64.29%	10-Dec-16 A, B2S - Formwork & Base FW (P206-P207)											
B2-1390	B2S - Rebar & post-tender member (P206-P207)	14	0%	29-Dec-16, B2S - Rebar & post-tender member (P206-P207)											
B2-1400	B2S - Side formworks (P206-P207)	5	0%	16-Jan-17, B2S - Side formworks (P206-P207)											
B2-1420	B2S - Top slab rebar (P206-P207)	5	0%	23-Jan-17, B2S - Top slab rebar (P206-P207)											
Deck 7 (P206-P205)															
B2-1450	B2S - Formwork & Base FW (P205-P205)	14	0%	19-Jan-17, B2S - Formwork & Base FW (P205-P205)											
B2-1460	B2S - Rebar & post-tender member (P205-P205)	14	0%	8-Feb-17, B2S - Rebar & post-tender member (P205-P205)											
B2-1470	B2S - Side formworks (P205-P205)	5	0%	24-Feb-17, B2S - Side formworks (P205-P205)											
Bridge 1															
Deck 2 (P108-A109)															
B1-300	B1 - Concrete base portion (P108-A109)	1	100%	6-Dec-16 A, B1 - Concrete base portion (P108-A109)											
B1-320	B1 - Concrete top slab (P108-A109)	1	100%	13-Dec-16 A, B1 - Concrete top slab (P108-A109)											
B1-330	B1 - Curing & post-tensioning (P108-A109)	14	42.86%	14-Dec-16 A, B1 - Curing & post-tensioning (P108-A109)											
B1-280	B1 - Rebar & post-tender member (P108-A109)	14	100%	30-Nov-16 A, B1 - Rebar & post-tender member (P108-A109)											
B1-290	B1 - Side formworks (P108-A109)	5	100%	5-Dec-16 A, B1 - Side formworks (P108-A109)											
B1-310	B1 - Top slab rebar (P108-A109)	5	100%	7-Dec-16 A, B1 - Top slab rebar (P108-A109)											
Deck 3 (P103-P104)															
B1-310	B1 - Concrete base portion (P103-P104)	1	0%	14-Jan-17, B1 - Concrete base portion (P103-P104)											
B1-330	B1 - Concrete top slab (P103-P104)	1	0%	21-Jan-17, B1 - Concrete top slab (P103-P104)											
B1-400	B1 - Curing & post-tensioning (P103-P104)	14	0%	23-Jan-17, B1 - Curing & post-tensioning (P103-P104)											
B1-340	B1 - Formwork & Base FW (P103-P104)	14	100%	16-Dec-16 A, B1 - Formwork & Base FW (P103-P104)											
B1-350	B1 - Rebar & post-tender member (P103-P104)	14	3.14%	20-Dec-16 A, B1 - Rebar & post-tender member (P103-P104)											
B1-360	B1 - Side formworks (P103-P104)	5	0%	9-Jan-17, B1 - Side formworks (P103-P104)											

█ Remaining Level of Effort
 █ Actual Work
 █ Critical Remaining ...
█ Actual Level of Effort
 █ Remaining Work
 ◆ Milestone

Date	Revision	Checked	Approved
21/Dec/16	Monthly Progress 29		

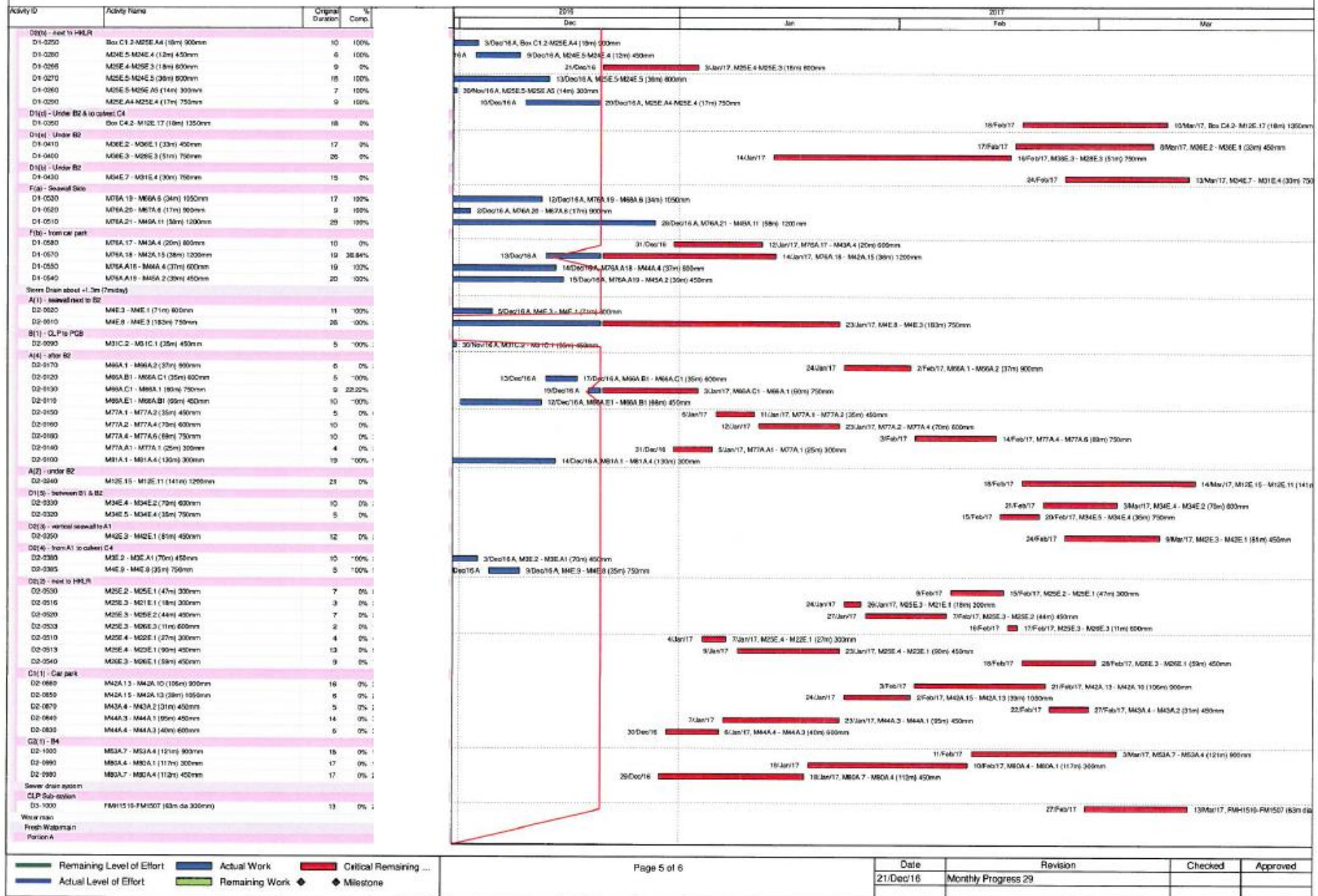
HKBCF Infrastructure (Western Portion) - Monthly Progress 29 - Three Month Rolling Programme



█ Remaining Level of Effort
 █ Actual Work
 █ Critical Remaining ...
█ Actual Level of Effort
 █ Remaining Work
 ◆ Milestone

Date	Revision	Checked	Approved
21/Dec/16	Monthly Progress 29		

HKBCF Infrastructure (Western Portion) - Monthly Progress 29 - Three Month Rolling Programme



█ Remaining Level of Effort
 █ Actual Work
 █ Critical Remaining ...
█ Actual Level of Effort
 █ Remaining Work
 ◆ Milestone

Date	Revision	Checked	Approved
21/Dec/16	Monthly Progress 29		

HKBCF Infrastructure (Western Portion) - Monthly Progress 29 - Three Month Rolling Programme

Activity ID	Activity Name	Original Duration	% Comp.	2016				2017			
				Dec	Jan	Feb	Mar	Dec	Jan	Feb	Mar
WM-1240	Fresh main H DN300 (CH700-CH1200) - Installation	42	57.14%	30/Nov/16, Fresh main H DN300 (CH700-CH1200) - Testing & backfill							
WM-1220	Fresh main H DN300 (CH700-CH1200) - Testing & backfill	14	100%								
WM-1260	Fresh main J DN400 (CH500-CH800) - Installation	14	0%	14/Feb/17, Fresh main H DN300 (CH700-CH1200) - Installation							
WM-1280	Fresh main K DN400 (CH500-CH815) - Installation	15	0%	18/Feb/17, Fresh main J DN400 (CH500-CH800) - Installation							
WM-1290	Fresh main K DN400 (CH500-CH815) - Testing & backfill	14	0%	2/Feb/17, Fresh main K DN400 (CH500-CH815) - Installation							
WM-1300	Fresh main P NS250 (CH217-CH50) - Installation	14	100%	20/Feb/17, Fresh main K DN400 (CH500-CH815) - Test							
WM-1310	Fresh main P NS250 (CH217-CH50) - Testing & backfill	14	100%	8/Dec/16, Fresh main P NS250 (CH217-CH50) - Installation							
Utilities											
CLP Cable trench & duct											
Portion A1 & A2											
UT-1010	CLP trench & Duct - bridge 2 to South Portion	60	23.33%	7/Dec/16A, CLP trench & Duct - bridge 2 to Sub-station							
UT-1030	CLP trench & Duct - bridge 2 to Sub-station	60	100%	4/Feb/17, CLP trench & Duct - bridge 2 to South Portion							
UT-1060	CLP trench & Duct - connection to Sub-station	20	0%	6/Dec/16A, CLP trench & Duct - bridge 2 to Sub-station							
Portion D1 & D2											
UT-1040	CLP trench & Duct - Site entrance to bridge 2 portion D2	60	48.67%	5/Feb/17, CLP trench & Duct - connection to Sub-station							
Utilities & Ducting											
Portion D2 (site entrance)											
UT-1110	Tel Duct cont common stack pit	28	0%	20/Jan/17, CLP trench & Duct - Site entrance to bridge 2 portion D2							
Road Works											
Road Furniture & Fit out											
Precore H-Pile & Cap for Sign Gantry											
RW-1730	Cap - GT100, GT119, DS301 (7 no.)	48	0%	23/Feb/17, Cap - GT406, FAD302, FAD301 (3x2 no.)							
RW-1740	Cap - GT406, FAD302, FAD301 (3x2 no.)	42	0%	12/Jan/17, Cap - GT406, FAD302, FAD301 (3x2 no.)							
RW-1720	H-pile - DS305, DS3, DSM (3x4 no.)	70	0%	2/Feb/17, H-pile - GT100, GT119, DS301 (7x4 no.)							
RW-1710	H-pile - GT100, GT119, DS301 (7x4 no.)	70	0%	22/Dec/16, H-pile - GT406, FAD302, FAD301 (3x2 no.)							
RW-1700	H-pile - GT406, FAD302, FAD301 (3x2 no.)	56	50%	17/Jan/17, H-pile - GT406, FAD302, FAD301 (3x2 no.)							
Road Lighting Design & Submission											
RW-2080	Order & delivery of lighting material for Portion I & H	60	0%	3/Feb/17, Prepare, submit & approval of road lighting system design							
RW-2090	Prepare, submit & approval of road lighting system design	60	43.67%	23/Dec/16, Submit & approval of road lighting system sub-contractor							
RW-2070	Submit & approval of road lighting system material	90	0%	5/Dec/16A, Submit & approval of road lighting system sub-contractor							
RW-2050	Submit & approval of road lighting system sub-contractor	90	100%	21/Jan/17, Prepare, submit & approval of Irrigation System sub-contractor							
Landscape											
Dubai & design of Irrigation system											
RW-2030	prepare, submit & approval of irrigation system design	120	0%	22/Jan/17, Prepare, submit & approval of Irrigation System sub-contractor							
RW-2020	Prepare, submit & approval of Irrigation System sub-contractor	120	73.33%								

█ Remaining Level of Effort
 █ Actual Work
 █ Critical Remaining ...
█ Actual Level of Effort
 █ Remaining Work
 ◆ Milestone

Date	Revision	Checked	Approved
21/Dec/16	Monthly Progress 29		