

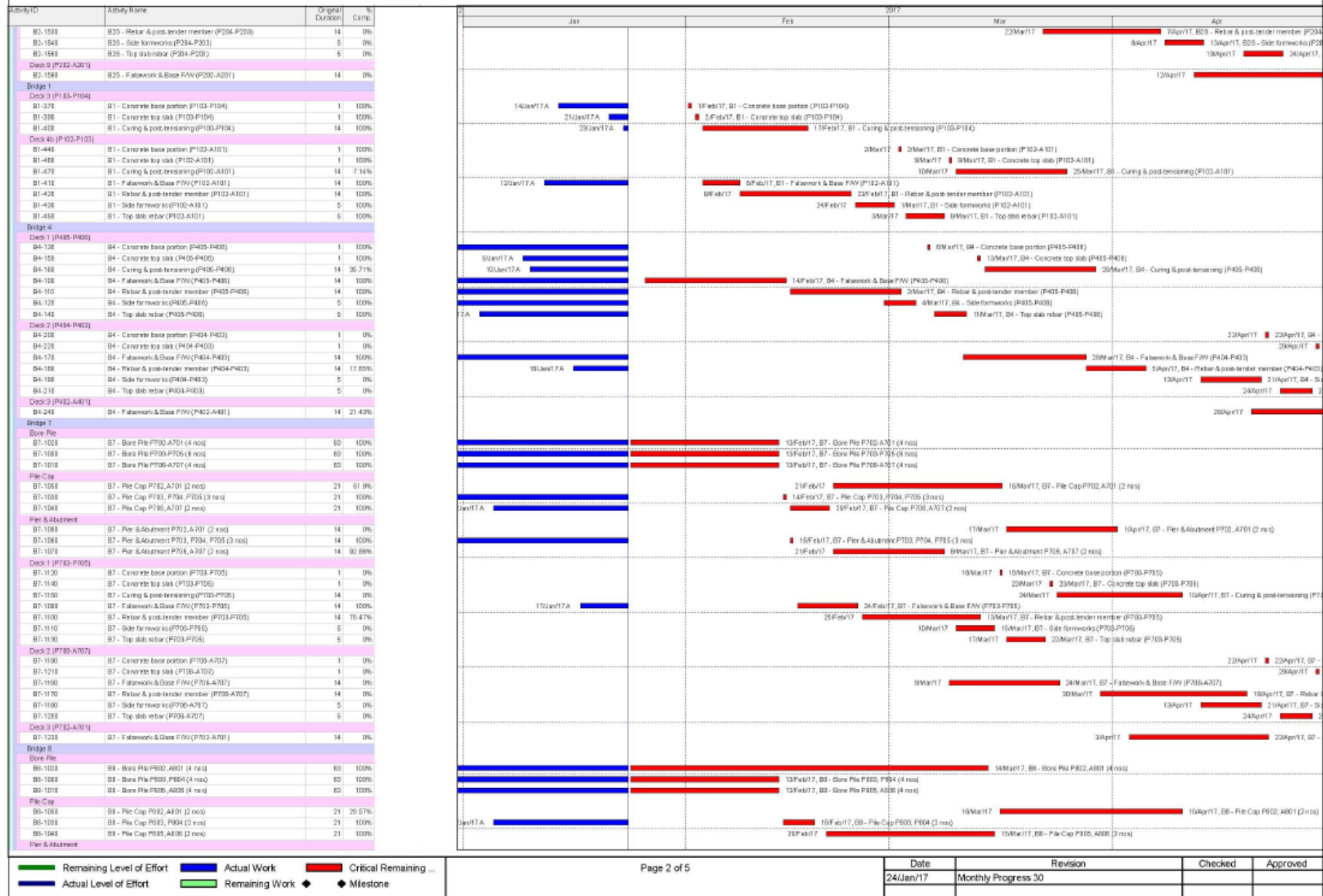
### HKBCF Infrastructure (Western Portion) - Monthly Progress 30 - Three Month Rolling Programme

Activity ID	Activity Name	Original Duration	%	Comp.	2017				
					Jan	Feb	Mar	Apr	
HKBCF Infrastructure (Western Portion) - Monthly Progress 30									
Bridge Structure									
Bridge 3									
Deck 1 (P305-P304)									
B3-0070	B3 - Falsework & Base FW (P305-P304)		14	100%					
B3-0080	B3 - Rebar & post-tender member (P305-P304)		14	100%					
B3-0084	B3 - Side formwork (P305-P304)		5	100%					
Bridge 2N									
Deck 3 (P213-P212)									
B2-0410	B2N - Concrete base portion (P213-P212)		1	100%					
B2-0415	B2N - Concrete top slab (P213-P212)		1	100%					
B2-0440	B2N - Curing & post-tensioning (P213-P212)		14	100%					
B2-0445	B2N - Top slab rebar (P213-P212)		5	100%					
Deck 4 (P214-A215)									
B2-0510	B2N - Concrete base portion (P214-A215)		1	0%					
B2-0515	B2N - Concrete top slab (P214-A215)		1	0%					
B2-0540	B2N - Curing & post-tensioning (P214-A215)		14	0%					
B2-0545	B2N - Falsework & Base FW (P214-A215)		14	100%					
B2-0550	B2N - Rebar & post-tender member (P214-A215)		14	100%					
B2-0555	B2N - Side formwork (P214-A215)		5	80%					
B2-0560	B2N - Top slab rebar (P214-A215)		5	0%					
Deck 6 (P208-P207)									
B2-0610	B2N - Concrete base portion (P208-P207)		1	100%					
B2-0615	B2N - Concrete top slab (P208-P207)		1	100%					
B2-0640	B2N - Curing & post-tensioning (P208-P207)		14	100%					
B2-0645	B2N - Top slab rebar (P208-P207)		5	100%					
Deck 1 (P209-P205)									
B2-0710	B2N - Concrete base portion (P209-P205)		1	0%					
B2-0715	B2N - Concrete top slab (P209-P205)		1	0%					
B2-0740	B2N - Curing & post-tensioning (P209-P205)		14	0%					
B2-0745	B2N - Falsework & Base FW (P209-P205)		14	100%					
B2-0750	B2N - Rebar & post-tender member (P209-P205)		14	100%					
B2-0755	B2N - Side formwork (P209-P205)		5	80%					
B2-0760	B2N - Top slab rebar (P209-P205)		5	0%					
Deck 8 (P204-P203)									
B2-0810	B2N - Concrete base portion (P204-P203)		1	0%					
B2-0815	B2N - Concrete top slab (P204-P203)		1	0%					
B2-0840	B2N - Curing & post-tensioning (P204-P203)		14	0%					
B2-0845	B2N - Falsework & Base FW (P204-P203)		14	21.43%					
B2-0850	B2N - Rebar & post-tender member (P204-P203)		14	0%					
B2-0855	B2N - Side formwork (P204-P203)		5	0%					
B2-0860	B2N - Top slab rebar (P204-P203)		5	0%					
Deck 9 (P203-A201)									
B2-0865	B2N - Falsework & Base FW (P203-A201)		14	0%					
Bridge 2S									
Deck 3 (P213-P212)									
B2-1270	B2S - Concrete base portion (P213-P212)		1	100%					
B2-1280	B2S - Concrete top slab (P213-P212)		1	100%					
B2-1300	B2S - Curing & post-tensioning (P213-P212)		14	84.29%					
B2-1305	B2S - Top slab rebar (P213-P212)		5	100%					
Deck 4 (P214-A215)									
B2-1340	B2S - Concrete base portion (P214-A215)		1	0%					
B2-1345	B2S - Concrete top slab (P214-A215)		1	0%					
B2-1370	B2S - Curing & post-tensioning (P214-A215)		14	0%					
B2-1375	B2S - Falsework & Base FW (P214-A215)		14	100%					
B2-1380	B2S - Rebar & post-tender member (P214-A215)		14	41.18%					
B2-1390	B2S - Side formwork (P214-A215)		5	0%					
B2-1395	B2S - Top slab rebar (P214-A215)		5	0%					
Deck 6 (P208-P207)									
B2-1410	B2S - Concrete base portion (P208-P207)		1	100%					
B2-1420	B2S - Concrete top slab (P208-P207)		1	100%					
B2-1440	B2S - Curing & post-tensioning (P208-P207)		14	84.29%					
B2-1445	B2S - Top slab rebar (P208-P207)		5	100%					
Deck 7 (P209-P205)									
B2-1450	B2S - Concrete base portion (P209-P205)		1	0%					
B2-1455	B2S - Concrete top slab (P209-P205)		1	0%					
B2-1480	B2S - Curing & post-tensioning (P209-P205)		14	0%					
B2-1485	B2S - Falsework & Base FW (P209-P205)		14	100%					
B2-1490	B2S - Rebar & post-tender member (P209-P205)		14	41.18%					
B2-1495	B2S - Side formwork (P209-P205)		5	0%					
B2-1500	B2S - Top slab rebar (P209-P205)		5	0%					
Deck 8 (P204-P203)									
B2-1510	B2S - Concrete base portion (P204-P203)		1	0%					
B2-1515	B2S - Concrete top slab (P204-P203)		1	0%					
B2-1540	B2S - Curing & post-tensioning (P204-P203)		14	0%					
B2-1545	B2S - Falsework & Base FW (P204-P203)		14	0%					
B2-1550	B2S - Rebar & post-tender member (P204-P203)		14	0%					
B2-1555	B2S - Side formwork (P204-P203)		5	0%					
B2-1560	B2S - Top slab rebar (P204-P203)		5	0%					

■ Remaining Level of Effort   
 ■ Actual Work   
 ■ Critical Remaining ...  
■ Actual Level of Effort   
 ■ Remaining Work   
 ◆ Milestone

Date	Revision	Checked	Approved
24/Jan/17	Monthly Progress 30		

### HKBCF Infrastructure (Western Portion) - Monthly Progress 30 - Three Month Rolling Programme



Date	Revision	Checked	Approved
24/Jan/17	Monthly Progress 30		

HKBCF Infrastructure (Western Portion) - Monthly Progress 30 - Three Month Rolling Programme

Activity ID	Activity Name	Original Duration	% Comp.	2017											
				Jan	Feb	Mar	Apr		May		Jun		Jul		
BS-1061	BS - Pier & Abutment P801, A801 (2 nos)	14	0%												
BS-1062	BS - Pier & Abutment P801, F804 (2 nos)	14	100%												
BS-1071	BS - Pier & Abutment P805, A806 (2 nos)	14	92.86%												
<b>Deck 1 (P803-P804)</b>															
BS-1120	BS - Concrete base portion (P803-P804)	1	0%												
BS-1140	BS - Concrete top slab (P803-P804)	1	0%												
BS-1150	BS - Curing & post-tensioning (P803-P804)	14	0%												
BS-1081	BS - Falsework & Base Form (P803-P804)	14	100%												
BS-1100	BS - Rebar & post-tensioner member (P803-P804)	14	76.43%												
BS-1110	BS - Side formwork (P803-P804)	5	0%												
BS-1130	BS - Top slab rebar (P803-P804)	5	0%												
<b>Deck 2 (P805-A806)</b>															
BS-1100	BS - Falsework & Base Form (P805-A806)	14	0%												
<b>Bridge 6</b>															
<b>Deck 2 (P802-P803)</b>															
BS-1221	BS - Concrete base portion (P802-P803)	1	100%												
BS-1241	BS - Concrete top slab (P802-P803)	1	100%												
BS-1251	BS - Curing & post-tensioning (P802-P803)	14	57.14%												
<b>Deck 3 (P803-P804)</b>															
BS-1261	BS - Concrete base portion (P803-P804)	1	0%												
BS-1281	BS - Concrete top slab (P803-P804)	1	0%												
BS-1301	BS - Curing & post-tensioning (P803-P804)	14	0%												
BS-1271	BS - Rebar & post-tensioner member (P803-P804)	14	36.29%												
BS-1281	BS - Side formwork (P803-P804)	5	0%												
BS-1281	BS - Top slab rebar (P803-P804)	5	0%												
<b>Deck 4 (P804-A805)</b>															
BS-1281	BS - Concrete base portion (P804-A805)	1	0%												
BS-1281	BS - Concrete top slab (P804-A805)	1	0%												
BS-1301	BS - Curing & post-tensioning (P804-A805)	14	0%												
BS-1311	BS - Falsework & Base Form (P804-A805)	14	0%												
BS-1341	BS - Rebar & post-tensioner member (P804-A805)	14	0%												
BS-1281	BS - Side formwork (P804-A805)	5	0%												
BS-1371	BS - Top slab rebar (P804-A805)	5	0%												
<b>Bridge 5</b>															
<b>Deck 1 (P501-P502)</b>															
BS-1481	BS - Falsework & Base Form (P501-P502)	14	0%												
BS-1411	BS - Rebar & post-tensioner member (P501-P502)	14	0%												
<b>Deck 3 (P503-P504)</b>															
BS-1541	BS - Falsework & Base Form (P503-P504)	14	0%												
BS-1551	BS - Rebar & post-tensioner member (P503-P504)	14	0%												
<b>Accessory Structure</b>															
<b>Retaining Wall, Bore &amp; Earth Works</b>															
<b>Bridge 2A</b>															
B2-1661	Retaining Wall RW1 (Bay 1)	21	0%												
B2-1741	Retaining Wall W2-1 (Bay 1)	21	0%												
B2-1731	Retaining Wall W2-1 (Bay 2)	21	0%												
B2-1731	Retaining Wall W2-1 (Bay 3)	21	0%												
B2-1711	Retaining Wall W2-1 (Bay 4)	21	0%												
<b>Bridge 7</b>															
B7-2081	Retaining Wall W7-1 (Bay 2)	21	0%												
B7-2081	Retaining Wall W7-1 (Bay 4)	21	0%												
<b>Bridge 8</b>															
BS-2171	Retaining Wall W8-1 (Bay 2)	21	0%												
BS-2151	Retaining Wall W8-1 (Bay 4)	21	0%												
<b>Bridge 9</b>															
BS-2101	Retaining Wall W9-1 (Bay 1)	21	81.9%												
BS-2101	Retaining Wall W9-1 (Bay 3)	21	81.9%												
BS-2101	Retaining Wall W9-1 (Bay 5)	21	81.9%												
<b>Bridge 5</b>															
BS-2131	Retaining Wall W5-1 (Bay 2)	21	0%												
BS-2131	Retaining Wall W5-1 (Bay 3)	21	10.0%												
BS-2151	Retaining Wall W5-1 (Bay 5)	21	10.0%												
<b>Slope &amp; Earth Works at Bridge Abutment</b>															
B2-1751	Slope & earth works - E10 & C1-52	56	22.86%												
<b>Parapet &amp; Barrier</b>															
<b>Bridge 3</b>															
B3-1851	B3c - Barrier Wall (148m)	25	0%												
B3-1841	B3c - Parapet Side Wall (148m)	25	0%												
<b>Bridge 1</b>															
B1-0381	B1 - Parapet Side Wall (131m)	64	48.44%												
<b>Storm &amp; Sewer Drainage Works</b>															
<b>Storm Drain below A1.2m (200mm)</b>															
D1-0010	Box C3.2 - M3E.5 (8m) 105mm	10	100%												
D1-0030	M3E.1 - M3E.1 (25m) 300mm	19	100%												
D1-0040	M3E.1 - M3E.1 (40m) 400mm	25	100%												

■ Remaining Level of Effort   
 ■ Actual Work   
 ■ Critical Remaining ...  
■ Actual Level of Effort   
 ■ Remaining Work   
 ◆ Milestone

Date	Revision	Checked	Approved
24/Jan/17	Monthly Progress 30		

### HKBCF Infrastructure (Western Portion) - Monthly Progress 30 - Three Month Rolling Programme

Activity ID	Activity Name	Original Duration	% Comp.	2017			
				Jan	Feb	Mar	Apr
D1-0020	M41E 3 - M38E 2 (25m) 800mm	19	100%		22Feb17, M43E 5 - M38E 3 (25m) 800mm		
D2(1) - end of B1							18Apr17, M42E 5 - M41E 1 (25m) 800mm
D1-0050	M41E 5 - M42E 4 (30m) 750mm	19	100%				
D1(x) - between B1 & B2							
D1-0070	Box C3.1 - M34E 8 (2.65m) 1200mm	10	100%		7Feb17, Box C3.1 - M34E 8 (2.65m) 1200mm		
D1-0085	M31E 2 - M33E 1 (40m) 450mm	20	100%			27Mar17, M38E 2 - M33E 1 (40m) 450mm	
D1-0090	M34E 1 - M33E 2 (42m) 800mm	21	100%		3Mar17, M34E 2 - M33E 2 (42m) 800mm		
D1-0090	M34E 1 - M34E 7 (27m) 1050mm	14	100%			12Apr17, M34E 8 - M34E 7 (27m) 1050mm	
D3(1) - to culvert C4							
D1-0120	Box C4.1 - M4E 8 (48m) 900mm	24	100%		33Feb17, Box C4.1 - M4E 8 (48m) 900mm		
D1-0140	M4E 10 - M3E 2 (20m) 450mm	10	100%			16Mar17, M4E 10 - M3E 2 (20m) 450mm	
D1-0130	M4E 11 - M3E 1 (10m) 450mm	10	100%		7Mar17, M4E 11 - M3E 1 (10m) 450mm		
D3(2) - at entrance							
D1-0160	Box C1.1-M20E 1 (6m) 1050mm	10	100%		3Feb17, Box C1.1-M20E 6 (6m) 1050mm		
D1-0180	M21E 4-M22E 2 (16m) 600mm	8	100%			3Mar17, M22E 4-M22E 3 (16m) 600mm	
D1-0190	M21E 5-M17E 5 (50m) 800mm	20	100%			7Apr17, M22E 5-M17E 5 (50m) 800mm	
D1-0170	M21E 8-M20E 4 (20m) 750mm	12	100%		22Feb17, M20E 6-M20E 4 (20m) 750mm		
D2(3) - next to HRLR							
D1-0250	Box C1.2-M25E 4 (18m) 900mm	10	100%		7Feb17, Box C1.2-M25E 4 (18m) 900mm		
D1-0260	M24E 5-M24E 4 (12m) 450mm	6	100%			15Mar17, M24E 5-M24E 4 (12m) 450mm	
D1-0295	M21E 4-M25E 2 (18m) 600mm	8	100%			6Apr17, M25E 4-M25E 3 (18m) 600mm	
D1-0270	M21E 5-M24E 5 (38m) 600mm	18	100%			8Mar17, M21E 5-M24E 5 (38m) 600mm	
D1-0290	M21E 5-M25E 4 (14m) 300mm	7	100%		16Feb17, M25E 6-M25E 4 (14m) 300mm		
D1-0290	M25E 4-M25E 4 (17m) 750mm	9	100%			25Mar17, M25E 4-M25E 4 (17m) 750mm	
D1(x) - Under B2 & to culvert C4							
D1-0250	Box C4.2 - M12E 17 (18m) 1350mm	18	0%		34Feb17	16Mar17, Box C4.2 - M12E 17 (18m) 1350mm	
D1-0260	M12E 17 - M12E 15 (16m) 1200mm	20	0%		11Mar17		
D1-0270	M12E 17 - M2E 1 (23m) 300mm	14	0%			26Apr17	
F(1) - Sewer Side							
D1-0530	M78A 19 - M26A 8 (24m) 1000mm	17	100%				
D1-0520	M78A 20 - M27A 8 (17m) 900mm	9	100%				
D1-0510	M78A 21 - M49A 11 (50m) 1200mm	20	100%			16Mar17, M78A 20 - M27A 8 (17m) 900mm	
D1-0500	M78A 22 - M26A 8 (12m) 600mm	6	100%			8Mar17, M78A 21 - M49A 11 (50m) 1200mm	
D1-0525	M78A 23 - M53A 10 (10m) 1050mm	5	100%		2Feb17, M78A 22 - M26A 8 (12m) 600mm		
F(2) - front car park							
D1-0550	M78A A1 8 - M44A 4 (37m) 810mm	10	100%				
D1-0540	M78A A1 9 - M45A 2 (38m) 450mm	20	100%				
Storm Drain about +1.3m (2m/day)							
A(1) - Sewer next to B2							
D2-0003	M4E 9 - M4E 1 (7m) 600mm	11	100%			10Mar17, M4E 9 - M4E 1 (7m) 600mm	
D2-0003	M4E 7 - M1E 1 (28m) 300mm	8	100%			10Mar17, M4E 9 - M4E 1 (7m) 600mm	
D2-0010	M4E 9 - M4E 3 (183m) 750mm	26	100%			10Mar17, M4E 7 - M1E 1 (28m) 300mm	
E(1) - CLP to PCB							
D2-0090	M12E 3 - M12E 1 (41m) 450mm	8	100%			24Mar17, M12E 2 - M12E 1 (41m) 450mm	
D2-0070	M12E 3 - M12E 2 (35m) 800mm	5	100%		1Feb17, M12E 3 - M12E 2 (35m) 800mm		
D2-0090	M31C 2 - M31C 1 (35m) 450mm	5	100%			30Mar17, M31C 2 - M31C 1 (35m) 450mm	
A(4) - Jbr B2							
D2-0120	M88A B1 - M69A C1 (35m) 600mm	5	0%				24Apr17
D2-0118	M88A E1 - M69A B1 (68m) 450mm	10	80%				18Apr17, M88A E1 - M69A B1 (68m) 450mm
D2-0100	M81A 1 - M81A 4 (128m) 300mm	19	100%			10Apr17, M81A 1 - M81A 4 (128m) 300mm	
A(2) - under B2							
D2-0250	M12E 11 - M12E 7 (148m) 1050mm	21	0%			21Mar17	18Apr17, M12E 11 - M12E 7 (148m) 1050mm
D2-0240	M12E 15 - M12E 11 (14m) 1200mm	21	0%		24Feb17	20Mar17, M12E 15 - M12E 11 (14m) 1200mm	
D2-0260	M12E 7 - M12E 4 (158m) 900mm	15	0%				18Apr17
D3(4) - from A1 to culvert C6							
D2-0370	M1E 1 - M3E 1A (23m) 300mm	5	100%			24Mar17, M2E 1 - M1E 1A (23m) 300mm	
D2-0380	M2E 2 - M3E 1 (10m) 450mm	10	100%			8Apr17, M2E 2 - M1E 1A (10m) 450mm	
D2-0265	M4E 9 - M4E 9 (25m) 150mm	5	100%			12Apr17, M4E 9 - M4E 9 (25m) 150mm	
D2(2) - next to HRLR							
D2-0510	M21E 4 - M22E 1 (27m) 300mm	4	100%				18Apr17, M22E 4 - M22E 1 (27m) 300mm
D2-0513	M21E 4 - M22E 1 (60m) 450mm	10	100%				
C.V.1) - Car park							
D2-0860	M42A 12 - M42A 10 (106m) 900mm	16	100%				5Apr17, M42A 12 - M42A 10 (106m) 900mm
D2-0850	M42A 15 - M42A 13 (39m) 1050mm	8	100%		10Mar17	15Mar17, M42A 15 - M42A 13 (39m) 1050mm	
D2-0890	M43A 3 - M43A 1 (51m) 300mm	8	100%				13Apr17
D2-0910	M43A 4 - M43A 2 (31m) 450mm	5	100%				24Apr17
D2-0892	M44A 1 - M44A A1 (28m) 300mm	5	100%				25Apr17
D2-0940	M44A 3 - M44A 1 (85m) 450mm	14	100%				
D2-0930	M44A 4 - M44A 2 (40m) 800mm	8	100%				
C.V.2) - B4							
D2-1020	M53A 10 - M52A 2 (285m) 1050mm	40	100%				18Mar17
D2-1010	M53A 4 - M52A 3 (41m) 450mm	6	100%			16Apr17	8Apr17, M53A 4 - M53A 3 (41m) 450mm
D2-1020	M53A 4 - M53A B1 (290m) 750mm	5	100%			10Apr17	13Apr17, M53A 4 - M53A B1 (290m) 750mm
D2-1000	M53A 7 - M52A 4 (121m) 800mm	18	100%				
D2-1022	M53A B1 - M53A A1 (24m) 600mm	5	100%		13Mar17	31Mar17, M52A 4 - M53A A1 (121m) 800mm	18Apr17
D2-0990	M53A 4 - M53A 1 (117m) 192mm	17	100%				24Apr17

█ Remaining Level of Effort   
 █ Actual Work   
 █ Critical Remaining ...  
█ Actual Level of Effort   
 █ Remaining Work   
 ◆ ◆ Milestone

Date	Revision	Checked	Approved
24/Jan/17	Monthly Progress 30		



### HKBCF Infrastructure (Western Portion) - Monthly Progress 30 - Three Month Rolling Programme

Activity ID	Activity Name	Original Duration	% Comp.	2017			
				Jan	Feb	Mar	Apr
D0-0880	M88A.7 - M80S.4 (113m) 400mm	17	100%			18Feb17, M80A.7 - M80A.4 (112m) 400mm	
<b>Branch, Collector drain, Gully &amp; U-channel</b>							
<b>Portion A &amp; B</b>							
D4-0220	Branch, Gully, U-channel & C. drain - portion A	80	0%				3Apr17
<b>Watermain</b>							
<b>Fresh Watermain</b>							
YW-1240	Fresh main H DN300 (CH100-CH1200) - Installation	42	100%				
YW-1280	Fresh main J DN400 (CH300-CH300) - Installation	14	0%	24Jan17		18Mar17, Fresh main H DN300 (CH100-CH1200) - Installation	
YW-1270	Fresh main J DN400 (CH300-CH300) - Testing & backfill	14	0%		24Feb17	11Mar17, Fresh main J DN400 (CH300-CH300) - Installation	
YW-1290	Fresh main K DN400 (CH150-CH150) - Installation	15	50%			17Mar17	10Apr17, Fresh main J DN400 (CH300-CH300) - Testing & backfill
YW-1290	Fresh main K DN400 (CH150-CH150) - Testing & backfill	14	0%	8Feb17		24Feb17, Fresh main K DN400 (CH150-CH150) - Installation	
YW-1200	Fresh main P NS250 (CH217-CH50) - Installation	14	100%			11Mar17	10Apr17, Fresh main K DN400 (CH300-CH300) - Testing & backfill
						13Mar17	10Apr17, Fresh main P NS250 (CH217-CH50) - Installation
<b>Utilities</b>							
<b>CLP Cable trench &amp; duct</b>							
<b>Portion A1 &amp; A3</b>							
UT-1010	CLP trench & Duct - bridge 2 to South Portion	60	0%				
UT-1000	CLP trench & Duct - connection to Sub-station	28	0%				
<b>Utilities &amp; Ducting</b>							
<b>Portion C2 (side entrance)</b>							
UT-1240	Tel Duct for Retaining wall at Bridge 2	55	0%				28Apr17
<b>Cable Duct (TCSS, ELV &amp; LV)</b>							
<b>Portion A &amp; B</b>							
UT-1230	Cable duct for TCSS, ELV, LV & other department (HY2013403 c)	21	0%				30Mar17
UT-1210	Cable duct for TCSS, ELV, LV & other department (Sub-station c)	21	0%				10Apr17, Cable duct for TCSS, ELV, LV & other department (Sub-station)
<b>Road Works</b>							
<b>Road Furniture &amp; Fit out</b>							
<b>Preform H-Pile &amp; Cap for Sign &amp; safety</b>							
RNV-1180	Cap - D5005, D520, D520 (2 no.)	40	0%				22Mar17
RNV-1170	Cap - G T102, G T110, D5201 (2 no.)	40	0%				12Apr17, Cap - G T320, G T110, D520
RNV-1150	Cap - G T405, RAD5001, RAD5001 (2 no.)	42	14.29%	12Jan17 A		23Feb17	23Feb17, Cap - G T405, RAD5002, RAD5001 (2 no.)
RNV-1130	H-pile - D5005, D520, D520 (3-D4 no.)	70	0%				12Apr17, H-pile - D5005, D520, D520
RNV-1110	H-pile - G T102, G T110, D5201 (24 no.)	70	40%		3Feb17		
RNV-1130	H-pile - G T122 (24 no.)	56	0%				8Mar17
<b>Road Lighting Design &amp; Submission</b>							
RNV-2010	Order & delivery of lighting material for Portion I & H	60	0%				18Apr17, Order & delivery
RNV-2030	Order & delivery of lighting material for remaining area	120	0%				
RNV-2050	Prepare, submit & approval of road lighting system design	60	0%		3Feb17		10Mar17
RNV-2070	Submit & approval of road lighting system material	60	0%				18Apr17, Submit & approval
<b>Lighting &amp; road furniture for Portion H</b>							
RNV-1840	Lighting & Power to Bridge 1a	21	100%				19Apr17

■ Remaining Level of Effort   
 ■ Actual Work   
 ■ Critical Remaining ...  
■ Actual Level of Effort   
 ■ Remaining Work   
 ◆ Milestone

Date	Revision	Checked	Approved
24/Jan/17	Monthly Progress 30		