

HKBCF Infrastructure (Western Portion) - Monthly Progress 31 - Three Month Rolling Programme

Activity ID	Activity Name	Original Duration	Comp	Feb	Mar	Apr	May
HKBCF Infrastructure (Western Portion) - Monthly Progress 31							
Bridge Structure							
Bridge 3							
Pier & Abutment							
IS-0050	IS - Pier & Abutment P305, P304 (2 nos)	14	100%	22Feb17	IS - Pier & Abutment P305, P304 (2 nos)		
Deck 1 (P211-P209)							
IS-0330	ISN - Concrete base portion (P211-P209)	1	100%	22Feb17	ISN - Concrete base portion (P211-P209)		
IS-0350	ISN - Concrete top slab (P211-P209)	1	100%	22Feb17	ISN - Concrete top slab (P211-P209)		
Deck 2 (P212-P211)							
IS-1950	ISN - Concrete base portion (P212-P211)	1	0%	22Feb17	ISN - Concrete base portion (P212-P211)		
IS-1970	ISN - Concrete top slab (P212-P211)	1	0%	22Feb17	ISN - Concrete top slab (P212-P211)		
Deck 3 (P213-P212)							
IS-0430	ISN - Concrete base portion (P213-P212)	1	100%	22Feb17	ISN - Concrete base portion (P213-P212)		
IS-0450	ISN - Concrete top slab (P213-P212)	1	100%	22Feb17	ISN - Concrete top slab (P213-P212)		
IS-0480	ISN - Curing & post-tensioning (P213-P212)	14	100%	22Feb17	ISN - Curing & post-tensioning (P213-P212)		
Deck 4 (P214-A215)							
IS-0530	ISN - Concrete base portion (P214-A215)	1	100%	22Feb17	ISN - Concrete base portion (P214-A215)		
IS-0550	ISN - Concrete top slab (P214-A215)	1	100%	22Feb17	ISN - Concrete top slab (P214-A215)		
IS-0560	ISN - Curing & post-tensioning (P214-A215)	14	100%	22Feb17	ISN - Curing & post-tensioning (P214-A215)		
IS-0500	ISN - Framework & Base FW (P214-A215)	14	100%	22Feb17	ISN - Framework & Base FW (P214-A215)		
IS-0510	ISN - Rebar & post-tender member (P214-A215)	14	100%	22Feb17	ISN - Rebar & post-tender member (P214-A215)		
IS-0520	ISN - Side formwork (P214-A215)	5	100%	22Feb17	ISN - Side formwork (P214-A215)		
IS-0540	ISN - Top slab rebar (P214-A215)	5	100%	22Feb17	ISN - Top slab rebar (P214-A215)		
Deck 5 (P206-P208)							
IS-2020	ISN - Concrete base portion (P206-P208)	1	0%	22Feb17	ISN - Concrete base portion (P206-P208)		
IS-2040	ISN - Concrete top slab (P206-P208)	1	0%	22Feb17	ISN - Concrete top slab (P206-P208)		
Deck 6 (P207-P207)							
IS-0630	ISN - Concrete base portion (P206-P207)	1	100%	22Feb17	ISN - Concrete base portion (P206-P207)		
IS-0650	ISN - Concrete top slab (P206-P207)	1	100%	22Feb17	ISN - Concrete top slab (P206-P207)		
IS-0660	ISN - Curing & post-tensioning (P206-P207)	14	100%	22Feb17	ISN - Curing & post-tensioning (P206-P207)		
Deck 7 (P205-P205)							
IS-0720	ISN - Concrete base portion (P205-P205)	1	100%	22Feb17	ISN - Concrete base portion (P205-P205)		
IS-0750	ISN - Concrete top slab (P205-P205)	1	100%	22Feb17	ISN - Concrete top slab (P205-P205)		
IS-0780	ISN - Curing & post-tensioning (P205-P205)	14	100%	22Feb17	ISN - Curing & post-tensioning (P205-P205)		
IS-0700	ISN - Framework & Base FW (P205-P205)	14	100%	22Feb17	ISN - Framework & Base FW (P205-P205)		
IS-0710	ISN - Rebar & post-tender member (P205-P205)	14	100%	22Feb17	ISN - Rebar & post-tender member (P205-P205)		
IS-0720	ISN - Side formwork (P205-P205)	5	100%	22Feb17	ISN - Side formwork (P205-P205)		
IS-0740	ISN - Top slab rebar (P205-P205)	5	100%	22Feb17	ISN - Top slab rebar (P205-P205)		
Deck 8 (P204-P203)							
IS-0820	ISN - Concrete base portion (P204-P203)	1	100%	22Feb17	ISN - Concrete base portion (P204-P203)		
IS-0850	ISN - Concrete top slab (P204-P203)	1	100%	22Feb17	ISN - Concrete top slab (P204-P203)		
IS-0860	ISN - Curing & post-tensioning (P204-P203)	14	100%	22Feb17	ISN - Curing & post-tensioning (P204-P203)		
IS-0800	ISN - Framework & Base FW (P204-P203)	14	100%	22Feb17	ISN - Framework & Base FW (P204-P203)		
IS-0810	ISN - Rebar & post-tender member (P204-P203)	14	100%	22Feb17	ISN - Rebar & post-tender member (P204-P203)		
IS-0820	ISN - Side formwork (P204-P203)	5	100%	22Feb17	ISN - Side formwork (P204-P203)		
IS-0840	ISN - Top slab rebar (P204-P203)	5	100%	22Feb17	ISN - Top slab rebar (P204-P203)		
Deck 9 (P202-A201)							
IS-0900	ISN - Framework & Base FW (P202-A201)	14	100%	22Feb17	ISN - Framework & Base FW (P202-A201)		
Bridge 26							
Deck 1 (P211-P209)							
IS-1200	IS2S - Concrete base portion (P211-P209)	1	100%	22Feb17	IS2S - Concrete base portion (P211-P209)		
IS-1220	IS2S - Concrete top slab (P211-P209)	1	100%	22Feb17	IS2S - Concrete top slab (P211-P209)		
Deck 2 (P212-P211)							
IS-2050	IS2S - Concrete base portion (P212-P211)	1	0%	22Feb17	IS2S - Concrete base portion (P212-P211)		
IS-2110	IS2S - Concrete top slab (P212-P211)	1	0%	22Feb17	IS2S - Concrete top slab (P212-P211)		
Deck 3 (P213-P212)							
IS-1270	IS2S - Concrete base portion (P213-P212)	1	100%	22Feb17	IS2S - Concrete base portion (P213-P212)		
IS-1290	IS2S - Concrete top slab (P213-P212)	1	100%	22Feb17	IS2S - Concrete top slab (P213-P212)		
IS-1300	IS2S - Curing & post-tensioning (P213-P212)	14	100%	22Feb17	IS2S - Curing & post-tensioning (P213-P212)		
Deck 4 (P214-A215)							
IS-1340	IS2S - Concrete base portion (P214-A215)	1	100%	22Feb17	IS2S - Concrete base portion (P214-A215)		
IS-1360	IS2S - Concrete top slab (P214-A215)	1	100%	22Feb17	IS2S - Concrete top slab (P214-A215)		
IS-1370	IS2S - Curing & post-tensioning (P214-A215)	14	100%	22Feb17	IS2S - Curing & post-tensioning (P214-A215)		
IS-1310	IS2S - Framework & Base FW (P214-A215)	14	100%	22Feb17	IS2S - Framework & Base FW (P214-A215)		
IS-1320	IS2S - Rebar & post-tender member (P214-A215)	14	100%	22Feb17	IS2S - Rebar & post-tender member (P214-A215)		
IS-1330	IS2S - Side formwork (P214-A215)	5	100%	22Feb17	IS2S - Side formwork (P214-A215)		
IS-1350	IS2S - Top slab rebar (P214-A215)	5	100%	22Feb17	IS2S - Top slab rebar (P214-A215)		
Deck 5 (P206-P208)							
IS-2180	IS2S - Concrete base portion (P206-P208)	1	0%	22Feb17	IS2S - Concrete base portion (P206-P208)		
IS-2190	IS2S - Concrete top slab (P206-P208)	1	0%	22Feb17	IS2S - Concrete top slab (P206-P208)		
Deck 6 (P207-P207)							
IS-1410	IS2S - Concrete base portion (P206-P207)	1	100%	22Feb17	IS2S - Concrete base portion (P206-P207)		
IS-1430	IS2S - Concrete top slab (P206-P207)	1	100%	22Feb17	IS2S - Concrete top slab (P206-P207)		
IS-1440	IS2S - Curing & post-tensioning (P206-P207)	14	100%	22Feb17	IS2S - Curing & post-tensioning (P206-P207)		
Deck 7 (P205-P205)							
IS-1480	IS2S - Concrete base portion (P205-P205)	1	100%	22Feb17	IS2S - Concrete base portion (P205-P205)		
IS-1500	IS2S - Concrete top slab (P205-P205)	1	100%	22Feb17	IS2S - Concrete top slab (P205-P205)		
IS-1510	IS2S - Curing & post-tensioning (P205-P205)	14	100%	22Feb17	IS2S - Curing & post-tensioning (P205-P205)		
IS-1450	IS2S - Framework & Base FW (P205-P205)	14	100%	22Feb17	IS2S - Framework & Base FW (P205-P205)		
IS-1460	IS2S - Rebar & post-tender member (P205-P205)	14	100%	22Feb17	IS2S - Rebar & post-tender member (P205-P205)		
IS-1470	IS2S - Side formwork (P205-P205)	5	100%	22Feb17	IS2S - Side formwork (P205-P205)		
IS-1490	IS2S - Top slab rebar (P205-P205)	5	100%	22Feb17	IS2S - Top slab rebar (P205-P205)		

■ Remaining Level of Effort
 ■ Actual Work
 ■ Critical Remaining ...
■ Actual Level of Effort
 ■ Remaining Work
 ◆ Milestone

Date	Revision	Checked	Approved
22/Feb/17	Monthly Progress 31		

HKBCF Infrastructure (Western Portion) - Monthly Progress 31 - Three Month Rolling Programme

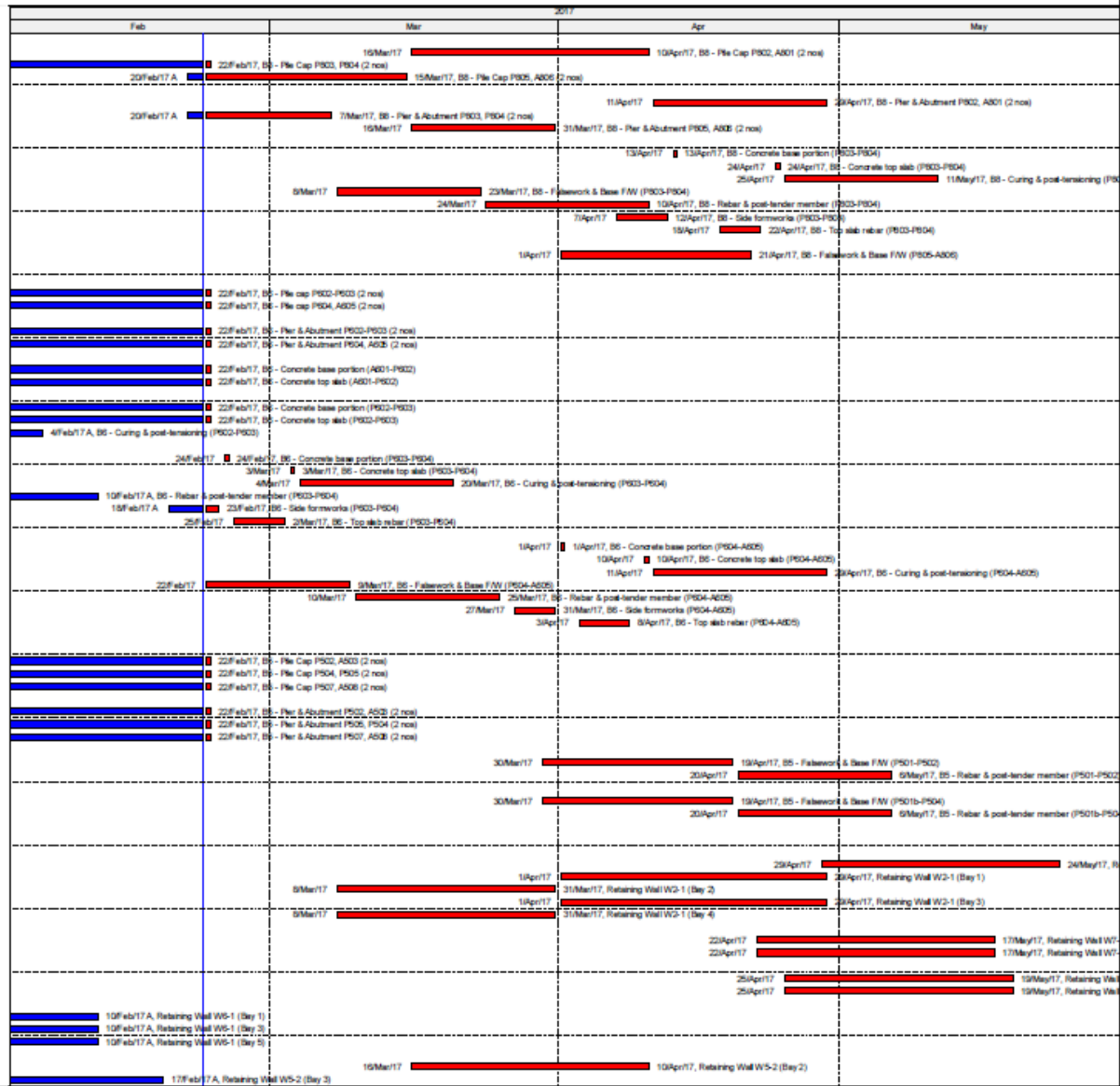
Activity ID	Activity Name	Original Duration	Comp.	2017				
				Feb	Mar	Apr	May	
Deck 8 (P204-P203)								
S2-1550	S25 - Concrete base portion (P204-P203)	1	100%			19Apr17	19Apr17, S25 - Concrete base portion (P204-P203)	
S2-1570	S25 - Concrete top slab (P204-P203)	1	100%			25Apr17	25Apr17, S25 - Concrete top slab (P204-P203)	
S2-1580	S25 - Curing & post-tensioning (P204-P203)	14	100%			25Apr17	25Apr17, S25 - Curing & post-tensioning (P204-P203)	
S2-1520	S25 - Falsework & Base FW (P204-P203)	14	100%			25Apr17	25Apr17, S25 - Falsework & Base FW (P204-P203)	
S2-1530	S25 - Rebar & post-tender member (P204-P203)	14	100%			25Apr17	25Apr17, S25 - Rebar & post-tender member (P204-P203)	
S2-1540	S25 - Side formwork (P204-P203)	5	100%			25Apr17	25Apr17, S25 - Side formwork (P204-P203)	
S2-1560	S25 - Top slab rebar (P204-P203)	5	100%			25Apr17	25Apr17, S25 - Top slab rebar (P204-P203)	
Deck 9 (P202-A201)								
S2-1590	S25 - Falsework & Base FW (P202-A201)	14	100%			12Apr17	12Apr17, S25 - Falsework & Base FW (P202-A201)	
Bridge 1								
Deck 1 (P105-P107)								
S1-0220	S1 - Concrete base portion (P105-P107)	1	100%	22Feb17				
S1-0250	S1 - Concrete top slab (P105-P107)	1	100%	22Feb17				
Deck 2 (P108-A108)								
S1-300	S1 - Concrete base portion (P108-A108)	1	100%	22Feb17				
S1-300	S1 - Concrete top slab (P108-A108)	1	100%	22Feb17				
Deck 3 (P103-P104)								
S1-370	S1 - Concrete base portion (P103-P104)	1	100%	22Feb17				
S1-380	S1 - Concrete top slab (P103-P104)	1	100%	22Feb17				
S1-400	S1 - Curing & post-tensioning (P103-P104)	14	100%	10Feb17				
Deck 4 (P102-P103)								
S1-440	S1 - Concrete base portion (P102-A101)	1	100%	23Mar17				
S1-460	S1 - Concrete top slab (P102-A101)	1	100%	23Mar17				
S1-470	S1 - Curing & post-tensioning (P102-A101)	14	100%	10Mar17				
S1-420	S1 - Rebar & post-tender member (P102-A101)	14	100%	23Feb17				
S1-430	S1 - Side formwork (P102-A101)	5	100%	23Feb17				
S1-450	S1 - Top slab rebar (P102-A101)	5	100%	23Feb17				
Bridge 4								
Pile Cap								
S4-0060	S4 - Pile Cap P402, A401 (2 nos)	21	100%	22Feb17				
S4-0050	S4 - Pile Cap P403, P404 (2 nos)	21	100%	22Feb17				
S4-0040	S4 - Pile Cap P405, P406 (2 nos)	21	100%	22Feb17				
Pier & Abutment								
S4-0020	S4 - Pier & Abutment P402, A401 (2 nos)	14	100%	22Feb17				
S4-0080	S4 - Pier & Abutment P403, P404 (2 nos)	14	100%	22Feb17				
S4-0070	S4 - Pier & Abutment P405, P406 (2 nos)	14	100%	22Feb17				
Deck 1 (P405-P406)								
S4-130	S4 - Concrete base portion (P405-P406)	1	100%		09Mar17			
S4-150	S4 - Concrete top slab (P405-P406)	1	100%		13Mar17			
Deck 2 (P404-P403)								
S4-200	S4 - Concrete base portion (P404-P403)	1	100%			23Apr17	23Apr17, S4 - Concrete base portion (P404-P403)	
S4-220	S4 - Concrete top slab (P404-P403)	1	100%			25Apr17	25Apr17, S4 - Concrete top slab (P404-P403)	
S4-180	S4 - Rebar & post-tender member (P404-P403)	14	100%	30Feb17				
S4-190	S4 - Side formwork (P404-P403)	5	100%			13Apr17	13Apr17, S4 - Side formwork (P404-P403)	
S4-210	S4 - Top slab rebar (P404-P403)	5	100%			24Apr17	24Apr17, S4 - Top slab rebar (P404-P403)	
Deck 3 (P402-A401)								
S4-240	S4 - Falsework & Base FW (P402-A401)	14	100%			20Apr17	20Apr17, S4 - Falsework & Base FW (P402-A401)	
Bridge 7								
Bore Pile								
S7-1020	S7 - Bore Pile P702-A701 (4 nos)	63	100%		10Mar17			
S7-1000	S7 - Bore Pile P703-P705 (6 nos)	63	100%		10Mar17			
S7-1010	S7 - Bore Pile P706-A707 (4 nos)	63	100%		10Mar17			
Pile Cap								
S7-1050	S7 - Pile Cap P702, A701 (2 nos)	21	100%	21Feb17				
S7-1030	S7 - Pile Cap P703, P704, P705 (3 nos)	21	100%	22Feb17				
S7-1040	S7 - Pile Cap P706, A707 (2 nos)	21	100%	22Feb17				
Pier & Abutment								
S7-1060	S7 - Pier & Abutment P702, A701 (2 nos)	14	100%		17Mar17			
S7-1060	S7 - Pier & Abutment P703, P704, P705 (3 nos)	14	100%		17Mar17			
S7-1070	S7 - Pier & Abutment P706, A707 (2 nos)	14	100%		17Mar17			
Deck 1 (P703-P705)								
S7-1120	S7 - Concrete base portion (P703-P705)	1	100%		16Mar17			
S7-1140	S7 - Concrete top slab (P703-P705)	1	100%		23Mar17			
S7-1150	S7 - Curing & post-tensioning (P703-P705)	14	100%		23Mar17			
S7-1090	S7 - Falsework & Base FW (P703-P705)	14	100%		24Mar17			
S7-1100	S7 - Rebar & post-tender member (P703-P705)	14	100%	4Feb17				
S7-1110	S7 - Side formwork (P703-P705)	5	100%	25Feb17				
S7-1130	S7 - Top slab rebar (P703-P705)	5	100%	10Mar17				
Deck 2 (P706-A707)								
S7-1190	S7 - Concrete base portion (P706-A707)	1	100%			22Apr17	22Apr17, S7 - Concrete base portion (P706-A707)	
S7-1210	S7 - Concrete top slab (P706-A707)	1	100%			29Apr17	29Apr17, S7 - Concrete top slab (P706-A707)	
S7-1190	S7 - Falsework & Base FW (P706-A707)	14	100%			30Mar17	30Mar17, S7 - Falsework & Base FW (P706-A707)	
S7-1170	S7 - Rebar & post-tender member (P706-A707)	14	100%			13Apr17	13Apr17, S7 - Rebar & post-tender member (P706-A707)	
S7-1180	S7 - Side formwork (P706-A707)	5	100%			24Apr17	24Apr17, S7 - Side formwork (P706-A707)	
S7-1200	S7 - Top slab rebar (P706-A707)	5	100%			24Apr17	24Apr17, S7 - Top slab rebar (P706-A707)	
Deck 3 (P702-A701)								
S7-1230	S7 - Falsework & Base FW (P702-A701)	14	100%			3Apr17	3Apr17, S7 - Falsework & Base FW (P702-A701)	
Bridge 8								
Bore Pile								
S8-1020	S8 - Bore Pile P802, A801 (4 nos)	63	100%		14Mar17			
S8-1000	S8 - Bore Pile P803, P804 (4 nos)	63	100%		10Mar17			
S8-1010	S8 - Bore Pile P805, A806 (4 nos)	63	100%		10Mar17			

█ Remaining Level of Effort
 █ Actual Work
 █ Critical Remaining ...
█ Actual Level of Effort
 █ Remaining Work
 ◆ Milestone

Date	Revision	Checked	Approved
22/Feb/17	Monthly Progress 31		

HKBCF Infrastructure (Western Portion) - Monthly Progress 31 - Three Month Rolling Programme

Activity ID	Activity Name	Original Duration	% Comp.
Pile Cap			
B5-1050	B5 - Pile Cap P802, A801 (2 nos)	21	100%
B5-1030	B5 - Pile Cap P803, P804 (2 nos)	21	100%
B5-1040	B5 - Pile Cap P805, A806 (2 nos)	21	100%
Pier & Abutment			
B5-1060	B5 - Pier & Abutment P802, A801 (2 nos)	14	100%
B5-1060	B5 - Pier & Abutment P803, P804 (2 nos)	14	100%
B5-1070	B5 - Pier & Abutment P805, A806 (2 nos)	14	100%
Deck 1 (P803-P804)			
B5-1120	B5 - Concrete base portion (P803-P804)	1	100%
B5-1140	B5 - Concrete top slab (P803-P804)	1	100%
B5-1150	B5 - Curing & post-tensioning (P803-P804)	14	100%
B5-1090	B5 - Fabricwork & Base F/W (P803-P804)	14	100%
B5-1100	B5 - Rebar & post-tender member (P803-P804)	14	100%
B5-1110	B5 - Side formwork (P803-P804)	5	100%
B5-1130	B5 - Top slab rebar (P803-P804)	5	100%
Deck 2 (P805-A806)			
B5-1150	B5 - Fabricwork & Base F/W (P805-A806)	14	100%
Bridge 6			
Pile Cap			
B5-1040	B5 - Pile cap P802-P803 (2 nos)	14	100%
B5-1050	B5 - Pile cap P804, A805 (2 nos)	21	100%
Pier & Abutment			
B5-1060	B5 - Pier & Abutment P802-P803 (2 nos)	14	100%
B5-1090	B5 - Pier & Abutment P804, A805 (2 nos)	14	100%
Deck 1 (P801-P802)			
B5-1100	B5 - Concrete base portion (A801-P802)	1	100%
B5-1170	B5 - Concrete top slab (A801-P802)	1	100%
Deck 2 (P802-P803)			
B5-1220	B5 - Concrete base portion (P802-P803)	1	100%
B5-1240	B5 - Concrete top slab (P802-P803)	1	100%
B5-1250	B5 - Curing & post-tensioning (P802-P803)	14	100%
Deck 3 (P803-P804)			
B5-1260	B5 - Concrete base portion (P803-P804)	1	100%
B5-1310	B5 - Concrete top slab (P803-P804)	1	100%
B5-1320	B5 - Curing & post-tensioning (P803-P804)	14	100%
B5-1270	B5 - Rebar & post-tender member (P803-P804)	14	100%
B5-1280	B5 - Side formwork (P803-P804)	5	100%
B5-1300	B5 - Top slab rebar (P803-P804)	5	100%
Deck 4 (P804-A805)			
B5-1360	B5 - Concrete base portion (P804-A805)	1	100%
B5-1380	B5 - Concrete top slab (P804-A805)	1	100%
B5-1390	B5 - Curing & post-tensioning (P804-A805)	14	100%
B5-1330	B5 - Fabricwork & Base F/W (P804-A805)	14	100%
B5-1340	B5 - Rebar & post-tender member (P804-A805)	14	100%
B5-1350	B5 - Side formwork (P804-A805)	5	100%
B5-1370	B5 - Top slab rebar (P804-A805)	5	100%
Bridge 5			
Pile Cap			
B5-1040	B5 - Pile Cap P502, A503 (2 nos)	14	100%
B5-1060	B5 - Pile Cap P504, P505 (2 nos)	14	100%
B5-1070	B5 - Pile Cap P507, A508 (2 nos)	21	100%
Pier & Abutment			
B5-1060	B5 - Pier & Abutment P502, A503 (2 nos)	14	100%
B5-1100	B5 - Pier & Abutment P505, P504 (2 nos)	14	100%
B5-1110	B5 - Pier & Abutment P507, A508 (2 nos)	14	100%
Deck 1 (P501-P502)			
B5-1400	B5 - Fabricwork & Base F/W (P501-P502)	14	0%
B5-1410	B5 - Rebar & post-tender member (P501-P502)	14	0%
Deck 3 (P501b-P504)			
B5-1540	B5 - Fabricwork & Base F/W (P501b-P504)	14	0%
B5-1550	B5 - Rebar & post-tender member (P501b-P504)	14	0%
Auxiliary Structure			
Retaining Wall, Steps & Earth Works			
Bridge 2H			
B2-1850	Retaining Wall RW1 (Bay 1)	21	100%
B2-1740	Retaining Wall W2-1 (Bay 1)	21	100%
B2-1720	Retaining Wall W2-1 (Bay 2)	21	100%
B2-1720	Retaining Wall W2-1 (Bay 3)	21	100%
B2-1710	Retaining Wall W2-1 (Bay 4)	21	100%
Bridge 7			
B7-2060	Retaining Wall W7-2 (Bay 2)	21	0%
B7-2060	Retaining Wall W7-2 (Bay 4)	21	0%
Bridge 8			
B5-2170	Retaining Wall W5-2 (Bay 2)	21	0%
B5-2150	Retaining Wall W5-2 (Bay 4)	21	0%
Bridge 9			
B5-2010	Retaining Wall W5-1 (Bay 1)	21	100%
B5-2030	Retaining Wall W5-1 (Bay 3)	21	100%
B5-2050	Retaining Wall W5-1 (Bay 5)	21	100%
Bridge 5			
B5-2130	Retaining Wall W5-2 (Bay 2)	21	100%
B5-2120	Retaining Wall W5-2 (Bay 3)	21	100%



■ Remaining Level of Effort
 ■ Actual Work
 ■ Critical Remaining ...
■ Actual Level of Effort
 ■ Remaining Work
 ◆ Milestone

Date	Revision	Checked	Approved
22/Feb/17	Monthly Progress 31		

HKBCF Infrastructure (Western Portion) - Monthly Progress 31 - Three Month Rolling Programme

Activity ID	Activity Name	Original Duration	Comp.	2017					
				Feb	Mar	Apr	May		
B5-2150	Retaining Wall W5-2 (Bay 5)	21	100%						
Slope & Earth Works at Bridge/Abutment									
B2-1750	Slope & earth works - B1b & C2-S2	35	0%						
Parapet & Barrier									
Bridge 2									
B2-1850	B2c - Barrier Wall (148m)	25	0%						
B2-1940	B2c - Parapet Side Wall (148m)	25	0%						
Bridge 1									
B1-0000	B1 - Parapet Side Wall (381m)	64	0%						
Storm & Sewer Drainage Works									
Storm Drain below +1.3m (2nd/day)									
D1(a) - culvert C3 near B1 end									
D1-0010	Box C3.2 - M3E.5 (8m) 1050mm	10	100%						
D1-0030	M3E.3 - M3E.1 (25m) 300mm	13	100%						
D1-0040	M3E.3 - M3E.1 (49m) 450mm	25	100%						
D1-0020	M4E.5 - M3E.3 (25m) 900mm	13	100%						
D2(a) - end of B1									
D1-0050	M4E.5 - M4E.4 (30m) 750mm	19	100%						
D1(b) - between B1 & B2									
D1-0070	Box C3.1 - M3E.8 (2.65m) 1200mm	10	100%						
D1-0085	M3E.2 - M3E.1 (40m) 450mm	20	0%						
D1-0090	M3E.8 - M3E.2 (42m) 600mm	21	100%						
D1-0090	M3E.8 - M3E.7 (27m) 1050mm	14	100%						
D2(b) - to culvert C4									
D1-0120	Box C4.1 - M4E.9 (48m) 900mm	24	100%						
D1-0140	M4E.10 - M3E.2 (20m) 450mm	10	100%						
D1-0130	M4E.11 - M3E.1 (19m) 450mm	10	100%						
D2(c) - site entrance									
D1-0180	Box C1.1-M2E.6 (5m) 1050mm	10	100%						
D1-0180	M2E.4-M2E.3 (15m) 600mm	8	100%						
D1-0190	M2E.5-M17E.5 (56m) 600mm	29	100%						
D1-0170	M2E.5-M2E.4 (25m) 750mm	13	100%						
D2(d) - road to HQLR									
D1-0250	Box C1.2-M2E.4A (10m) 900mm	10	100%						
D1-0280	M2E.5-M2E.4 (12m) 450mm	6	100%						
D1-0295	M2E.4-M2E.3 (18m) 600mm	9	0%						
D1-0270	M2E.5-M2E.5 (36m) 600mm	18	100%						
D1-0280	M2E.5-M2E.5A (14m) 300mm	7	100%						
D1-0290	M2E.5A-M2E.4 (17m) 750mm	9	100%						
D1(e) - Under B2 & to culvert C4									
D1-0290	Box C4.2 - M12E.17 (18m) 1350mm	18	100%						
D1-0300	M12E.17 - M12E.15 (89m) 1200mm	33	100%						
D1-0370	M12E.17 - M8E.1 (28m) 300mm	14	100%						
F(a) - General Site									
D1-0930	M7A.19 - M8A.5 (34m) 1050mm	17	100%						
D1-0920	M7A.20 - M7A.5 (17m) 900mm	9	100%						
D1-0910	M7A.21 - M4A.11 (36m) 1200mm	29	100%						
D1-0900	M7A.22 - M8A.6 (12m) 600mm	6	100%						
D1-0490	M7A.23 - M3A.9 (44m) 1200mm	22	100%						
D1-0525	M7A.A23 - M3A.10 (10m) 1050mm	5	0%						
F(b) - from car park									
D1-0990	M7A.A18 - M4A.4 (37m) 600mm	19	100%						
D1-0940	M7A.A19 - M4A.2 (39m) 450mm	20	100%						
Storm Drain about +1.3m (Trailing)									
A(1) - general road to B2									
C2-0020	M4E.3 - M4E.1 (71m) 600mm	11	100%						
C2-0060	M4E.7 - M1E.1 (39m) 300mm	6	100%						
C2-0010	M4E.8 - M4E.3 (183m) 750mm	26	100%						
B(1) - CLP to PCB									
C2-0080	M12E.2 - M12E.1 (41m) 450mm	6	100%						
C2-0070	M12E.3 - M12E.2 (35m) 600mm	5	100%						
C2-0090	M31C.2 - M31C.1 (25m) 450mm	5	100%						
A(4) - after B2									
C2-0120	M8A.B1 - M8A.C1 (35m) 600mm	5	100%						
C2-0110	M8A.E1 - M8A.B1 (86m) 450mm	10	100%						
C2-0100	M81A.1 - M81A.4 (130m) 300mm	19	100%						
A(5) - under B2									
C2-0250	M12E.11 - M12E.7 (148m) 1050mm	21	100%						
C2-0240	M12E.15 - M12E.11 (141m) 1200mm	21	100%						
C2-0260	M12E.7 - M12E.4 (105m) 900mm	15	100%						
D2(e) - from A1 to culvert C4									
C2-0270	M3E.1 - M3E.1A (30m) 300mm	5	100%						
C2-0280	M3E.2 - M3E.1A (70m) 450mm	10	100%						
C2-0290	M4E.9 - M4E.9 (36m) 750mm	5	0%						
D2(f) - road to HQLR									
C2-0510	M2E.4 - M2E.1 (27m) 300mm	4	100%						
C2-0513	M2E.4 - M2E.1 (90m) 450mm	13	0%						
C1(1) - Car park									
C2-0660	M4A.13 - M4A.10 (106m) 900mm	16	100%						
C2-0650	M4A.15 - M4A.13 (29m) 1050mm	6	100%						
C2-0680	M43A.2 - M43A.1 (51m) 300mm	8	100%						
C2-0670	M43A.4 - M43A.2 (31m) 450mm	5	100%						
C2-0682	M4A.1 - M4A.1A1 (30m) 300mm	5	0%						

█ Remaining Level of Effort
 █ Actual Work
 █ Critical Remaining ...
█ Actual Level of Effort
 █ Remaining Work
 ◆ Milestone

Date	Revision	Checked	Approved
22/Feb/17	Monthly Progress 31		

HKBCF Infrastructure (Western Portion) - Monthly Progress 31 - Three Month Rolling Programme

Activity ID	Activity Name	Original Duration	% Comp	Feb	Mar	Apr	May
D2-264D	M4A4.3 - M4A4.1 (25m) 450mm	14	100%		9/Mar/17, M4A4.3 - M4A4.1 (25m) 450mm		
D2-263D	M4A4.4 - M4A4.3 (40m) 600mm	6	100%	25/Feb/17, M4A4.4 - M4A4.3 (40m) 600mm			
CR1) - B4							
D2-103D	M5A.10 - M5A.3 (285m) 1050mm	40	100%		29/Mar/17		19/May/17, M5A.10 - M5A.3 (285m) 1050mm
D2-101D	M5A.4 - M5A.3 (41m) 450mm	6	100%		1/Apr/17		
D2-102D	M5A.4 - M5A.B1 (32m) 750mm	6	100%		10/Apr/17		
D2-100D	M5A.7 - M5A.4 (121m) 300mm	18	100%	11/Mar/17	17/Mar/17	31/Mar/17, M5A.7 - M5A.4 (121m) 300mm	18/Apr/17, M5A.4 - M5A.B1 (32m) 750mm
D2-102D	M5A.B1 - M5A.A1 (24m) 600mm	6	0%			19/Apr/17	24/Apr/17, M5A.B1 - M5A.A1 (24m) 600mm
D2-099D	M5A.4 - M5A.1 (117m) 300mm	17	100%		13/Mar/17, M5A.4 - M5A.1 (117m) 300mm		
D2-098D	M5A.7 - M5A.4 (112m) 450mm	17	100%		13/Mar/17, M5A.7 - M5A.4 (112m) 450mm		
Branch, Collector drain, Gully & U-channel							
Portion A & B							
D4-025D	Branch, Gully, U-channel & C. drain - portion A	60	0%			30/Apr/17	
Water main							
Fresh Water main							
Portion A							
WM-124D	Fresh main H DN300 (CH700-CH1200) - Installation	42	100%	22/Feb/17		12/Apr/17, Fresh main H DN300 (CH700-CH1200) - Installation	
WM-126D	Fresh main J DN400 (CH500-CH900) - Installation	14	100%	24/Feb/17	11/Mar/17, Fresh main J DN400 (CH500-CH900) - Installation		
WM-127D	Fresh main J DN400 (CH500-CH900) - Testing & backfill	14	100%		17/Mar/17	10/Apr/17, Fresh main J DN400 (CH500-CH900) - Testing & backfill	
WM-128D	Fresh main K DN400 (CH500-CH815) - Installation	15	100%	22/Feb/17	10/Mar/17, Fresh main K DN400 (CH500-CH815) - Installation		
WM-129D	Fresh main K DN400 (CH500-CH815) - Testing & backfill	14	100%		17/Mar/17	10/Apr/17, Fresh main K DN400 (CH500-CH815) - Testing & backfill	
WM-130D	Fresh main P NG250 (CH217-CH90) - Installation	14	100%		17/Mar/17	10/Apr/17, Fresh main P NG250 (CH217-CH90) - Installation	
Utilities							
CLP Cable trench & duct							
Portion A1 & A3							
UT-101D	CLP trench & Duct - bridge 2 to South Portion	60	100%	4/Feb/17 A, CLP trench & Duct - bridge 2 to South Portion			
UT-100D	CLP trench & Duct - connection to Sub-station	28	0%	4/Mar/17, CLP trench & Duct - connection to Sub-station			
Utilities & Ducting							
Portion D2 (side entrance)							
UT-124D	Tel Duct for Retaining wall at Bridge 2	55	0%			29/Apr/17	
Cable Duct (TCSS, ELV & LV)							
Portion A & B							
UT-123D	Cable duct for TCSS, ELV LV & other department (HY201303)	21	0%			30/Mar/17	19/Apr/17, Cable duct for TCSS, ELV LV & other department (HY201303 connection)
UT-121D	Cable duct for TCSS, ELV LV & other department (Sub-station connection)	21	0%	9/Mar/17	25/Mar/17	25/Mar/17, Cable duct for TCSS, ELV LV & other department (Sub-station connection)	
Road Works							
Road Furniture & Fit out							
Pre-bore H-Pile & Cap for Sign Gantry							
RW-175D	Cap - D5305, D523, D524 (9 no.)	49	0%		23/Mar/17		10/May/17, Cap - D5305, D523, D524 (9 no.)
RW-175D	Cap - GT1020, GT119, D5301 (7 no.)	49	0%	22/Feb/17		12/Apr/17, Cap - GT1020, GT119, D5301 (7 no.)	
RW-174D	Cap - GT405, FAD5302, FAD5301 (3&2 no.)	42	0%	22/Feb/17		12/Apr/17, Cap - GT405, FAD5302, FAD5301 (3&2 no.)	
RW-172D	H-pile - D5305, D523, D524 (3&2&4 no.)	70	0%		1/Mar/17, H-pile - D5305, D523, D524 (3&2&4 no.)		31/May/17, H-pile - D5305, D523, D524 (3&2&4 no.)
RW-173D	H-pile - GT1020, GT119, D5301 (7&4 no.)	70	0%		9/Mar/17		31/May/17, H-pile - GT1020, GT119, D5301 (7&4 no.)
RW-173D	H-pile - GT122 (2&4 no.)	56	0%				31/May/17, H-pile - GT122 (2&4 no.)
Road Lighting Design & Submission							
RW-200D	Order & delivery of lighting material for Portion I & H	60	0%			18/Apr/17, Order & delivery of lighting material for Portion I & H	
RW-200D	Order & delivery of lighting material for remaining area	120	0%				
RW-200D	Prepare, submit & approval of road lighting system design	60	0%	22/Feb/17 A, Prepare, submit & approval of road lighting system design	10/Mar/17		
RW-207D	Submit & approval of road lighting system material	90	0%			18/Apr/17, Submit & approval of road lighting system material	
Lighting & road furniture for Portion H							
RW-154D	Lighting & Power to Bridge 1a	21	0%			18/Apr/17	9/May/17, Lighting & Power to Bridge 1a

■ Remaining Level of Effort
 ■ Actual Work
 ■ Critical Remaining ...
■ Actual Level of Effort
 ■ Remaining Work
 ◆ Milestone

Date	Revision	Checked	Approved
22/Feb/17	Monthly Progress 31		