

HKBCF Infrastructure (Western Portion) - Monthly Progress 32 - Three Month Rolling Programme

Activity ID	Activity Name	Original Duration	% Comp	Mar	Apr	May	Jun	
<b>HKBCF Infrastructure (Western Portion) - Monthly Progress 32</b>								
<b>Preliminaries</b>								
<b>Contractual Date</b>								
Key Date	KD11-Bridge 1a & abutment in Portion H (COW-6506)	0	100%					◆ KD11-Bridge 1a & abutment in Portion H (COW-6506)
<b>Bridge Structure</b>								
<b>Bridge 3</b>								
<b>Pier &amp; Abutment</b>								
BS-0260	BS - Pier & Abutment (P305, P304 (2 nos))	14	100%	22/Mar/17, BS - Pier & Abutment (P305, P304 (2 nos))				
<b>Deck 1 (P305-P304)</b>								
BS-0100	BS - Concrete base portion (P305-P304)	1	100%	22/Mar/17, BS - Concrete base portion (P305-P304)				
BS-0120	BS - Concrete top slab (P305-P304)	1	100%	22/Mar/17, BS - Concrete top slab (P305-P304)				
<b>Deck 2 (P304-P303)</b>								
BS-0230	BS - Concrete base portion (P304-P303)	1	100%	11/Apr/17, BS - Concrete base portion (P304-P303)				
BS-0250	BS - Concrete top slab (P304-P303)	1	100%	11/Apr/17, BS - Concrete top slab (P304-P303)				
<b>Deck 3 (P303-P302)</b>								
BS-0300	BS - Concrete base portion (P303-P302)	1	100%	13/Apr/17, BS - Concrete base portion (P303-P302)				
BS-0320	BS - Concrete top slab (P303-P302)	1	100%	13/Apr/17, BS - Concrete top slab (P303-P302)				
BS-0360	BS - Curing & post-tensioning (P303-P302)	14	100%	13/Apr/17, BS - Curing & post-tensioning (P303-P302)				
BS-0320	BS - Side formwork (P303-P302)	5	100%	7/Apr/17, BS - Side formwork (P303-P302)				
BS-0340	BS - Top slab rebar (P303-P302)	5	100%	15/Apr/17, BS - Top slab rebar (P303-P302)				
<b>Deck 4 (P302-A301)</b>								
BS-0430	BS - Concrete base portion (P302-A301)	1	100%	13/Apr/17, BS - Concrete base portion (P302-A301)				
BS-0450	BS - Concrete top slab (P302-A301)	1	100%	13/Apr/17, BS - Concrete top slab (P302-A301)				
BS-0460	BS - Curing & post-tensioning (P302-A301)	14	100%	13/Apr/17, BS - Curing & post-tensioning (P302-A301)				
BS-0400	BS - Framework & Base F/W (P302-A301)	14	100%	13/Apr/17, BS - Framework & Base F/W (P302-A301)				
BS-0410	BS - Rebar & post-tender member (P302-A301)	14	100%	13/Apr/17, BS - Rebar & post-tender member (P302-A301)				
BS-0420	BS - Side formwork (P302-A301)	5	100%	13/Apr/17, BS - Side formwork (P302-A301)				
BS-0440	BS - Top slab rebar (P302-A301)	5	100%	13/Apr/17, BS - Top slab rebar (P302-A301)				
<b>Bridge 2H</b>								
<b>Deck 1 (P211-P209)</b>								
BS-0200	BSH - Concrete base portion (P211-P209)	1	100%	22/Mar/17, BSH - Concrete base portion (P211-P209)				
BS-0250	BSH - Concrete top slab (P211-P209)	1	100%	22/Mar/17, BSH - Concrete top slab (P211-P209)				
<b>Deck 2 (P212-P211)</b>								
BS-1250	BSH - Concrete base portion (P212-P211)	1	100%	24/Mar/17, BSH - Concrete base portion (P212-P211)				
BS-1270	BSH - Concrete top slab (P212-P211)	1	100%	24/Mar/17, BSH - Concrete top slab (P212-P211)				
<b>Deck 3 (P213-P212)</b>								
BS-0430	BSH - Concrete base portion (P213-P212)	1	100%	27/Mar/17, BSH - Concrete base portion (P213-P212)				
BS-0450	BSH - Concrete top slab (P213-P212)	1	100%	25/Mar/17, BSH - Concrete top slab (P213-P212)				
BS-0460	BSH - Curing & post-tensioning (P213-P212)	14	100%	30/Mar/17, BSH - Curing & post-tensioning (P213-P212)				
<b>Deck 4 (P214-A215)</b>								
BS-0530	BSH - Concrete base portion (P214-A215)	1	100%	7/Apr/17, BSH - Concrete base portion (P214-A215)				
BS-0550	BSH - Concrete top slab (P214-A215)	1	100%	8/Apr/17, BSH - Concrete top slab (P214-A215)				
BS-0560	BSH - Curing & post-tensioning (P214-A215)	14	100%	7/Apr/17, BSH - Curing & post-tensioning (P214-A215)				
<b>Deck 5 (P208-P206)</b>								
BS-2030	BSH - Concrete base portion (P208-P206)	1	100%	24/Mar/17, BSH - Concrete base portion (P208-P206)				
BS-2040	BSH - Concrete top slab (P208-P206)	1	100%	24/Mar/17, BSH - Concrete top slab (P208-P206)				
<b>Deck 6 (P207-P207)</b>								
BS-0630	BSH - Concrete base portion (P206-P207)	1	100%	27/Mar/17, BSH - Concrete base portion (P206-P207)				
BS-0650	BSH - Concrete top slab (P206-P207)	1	100%	25/Mar/17, BSH - Concrete top slab (P206-P207)				
BS-0660	BSH - Curing & post-tensioning (P206-P207)	14	100%	30/Mar/17, BSH - Curing & post-tensioning (P206-P207)				
<b>Deck 7 (P205-P205)</b>								
BS-0730	BSH - Concrete base portion (P206-P205)	1	100%	7/Apr/17, BSH - Concrete base portion (P206-P205)				
BS-0750	BSH - Concrete top slab (P206-P205)	1	100%	8/Apr/17, BSH - Concrete top slab (P206-P205)				
BS-0760	BSH - Curing & post-tensioning (P206-P205)	14	100%	7/Apr/17, BSH - Curing & post-tensioning (P206-P205)				
<b>Deck 8 (P204-P203)</b>								
BS-0830	BSH - Concrete base portion (P204-P203)	1	100%	10/Apr/17, BSH - Concrete base portion (P204-P203)				
BS-0850	BSH - Concrete top slab (P204-P203)	1	100%	13/May/17, BSH - Concrete top slab (P204-P203)				
BS-0860	BSH - Curing & post-tensioning (P204-P203)	14	64.29%	9/May/17, BSH - Curing & post-tensioning (P204-P203)				
BS-0800	BSH - Framework & Base F/W (P204-P203)	14	100%	10/Apr/17, BSH - Framework & Base F/W (P204-P203)				
BS-0810	BSH - Rebar & post-tender member (P204-P203)	14	100%	10/Apr/17, BSH - Rebar & post-tender member (P204-P203)				
BS-0820	BSH - Side formwork (P204-P203)	5	100%	25/Apr/17, BSH - Side formwork (P204-P203)				
BS-0840	BSH - Top slab rebar (P204-P203)	5	100%	9/May/17, BSH - Top slab rebar (P204-P203)				
<b>Deck 9 (P203-A201)</b>								
BS-0930	BSH - Concrete base portion (P203-A201)	1	0%	13/Apr/17, BSH - Concrete base portion (P203-A201)				
BS-0950	BSH - Concrete top slab (P203-A201)	1	0%	13/Apr/17, BSH - Concrete top slab (P203-A201)				
BS-0960	BSH - Curing & post-tensioning (P203-A201)	14	0%	13/Apr/17, BSH - Curing & post-tensioning (P203-A201)				
BS-0900	BSH - Framework & Base F/W (P203-A201)	14	100%	10/Apr/17, BSH - Framework & Base F/W (P203-A201)				
BS-0910	BSH - Rebar & post-tender member (P203-A201)	14	41.18%	9/May/17, BSH - Rebar & post-tender member (P203-A201)				
BS-0920	BSH - Side formwork (P203-A201)	5	0%	20/May/17, BSH - Side formwork (P203-A201)				
BS-0940	BSH - Top slab rebar (P203-A201)	5	0%	7/Jun/17, BSH - Top slab rebar (P203-A201)				
<b>Bridge 2B</b>								
<b>Deck 1 (P211-P209)</b>								
BS-1200	BSH - Concrete base portion (P211-P209)	1	100%	22/Mar/17, BSH - Concrete base portion (P211-P209)				
BS-1220	BSH - Concrete top slab (P211-P209)	1	100%	23/Mar/17, BSH - Concrete top slab (P211-P209)				
<b>Deck 2 (P212-P211)</b>								
BS-2050	BSH - Concrete base portion (P212-P211)	1	100%	24/Mar/17, BSH - Concrete base portion (P212-P211)				

■ Remaining Level of Effort   
 ■ Actual Work   
 ■ Critical Remaining ...  
■ Actual Level of Effort   
 ■ Remaining Work   
 ◆ Milestone

Date	Revision	Checked	Approved
22/Mar/17	Monthly Progress 32		

HKBCF Infrastructure (Western Portion) - Monthly Progress 32 - Three Month Rolling Programme

Activity ID	Activity Name	Original Duration	% Comp	2017											
				Mar	Apr	May	Jun								
BD-2110	B25 - Concrete top slab (P212-P211)	1	100%	25Mar17, B25 - Concrete top slab (P212-P211)											
<b>Deck 3 (P213-P212)</b>															
BD-1270	B25 - Concrete base portion (P213-P212)	1	100%	27Mar17, B25 - Concrete base portion (P213-P212)											
BD-1280	B25 - Concrete top slab (P213-P212)	1	100%	25Mar17, B25 - Concrete top slab (P213-P212)											
BD-1300	B25 - Curing & post-tensioning (P213-P212)	14	100%	30Mar17, B25 - Curing & post-tensioning (P213-P212)											
<b>Deck 4 (P214-A215)</b>															
BD-1340	B25 - Concrete base portion (P214-A215)	1	100%	8Mar17 A, 19Mar17 A, 19Mar17 A											
BD-1360	B25 - Concrete top slab (P214-A215)	1	100%	7Apr17, B25 - Concrete top slab (P214-A215)											
BD-1370	B25 - Curing & post-tensioning (P214-A215)	14	100%	22Apr17, B25 - Curing & post-tensioning (P214-A215)											
<b>Deck 5 (P208-P209)</b>															
BD-2160	B25 - Concrete base portion (P208-P209)	1	100%	24Mar17, B25 - Concrete base portion (P208-P209)											
BD-2180	B25 - Concrete top slab (P208-P209)	1	100%	25Mar17, B25 - Concrete top slab (P208-P209)											
<b>Deck 6 (P206-P207)</b>															
BD-1410	B25 - Concrete base portion (P206-P207)	1	100%	27Mar17, B25 - Concrete base portion (P206-P207)											
BD-1430	B25 - Concrete top slab (P206-P207)	1	100%	28Mar17, B25 - Concrete top slab (P206-P207)											
BD-1440	B25 - Curing & post-tensioning (P206-P207)	14	100%	30Mar17, B25 - Curing & post-tensioning (P206-P207)											
<b>Deck 7 (P205-P206)</b>															
BD-1480	B25 - Concrete base portion (P205-P206)	1	100%	8Mar17 A, 19Mar17 A, 19Mar17 A											
BD-1500	B25 - Concrete top slab (P205-P206)	1	100%	7Apr17, B25 - Concrete top slab (P205-P206)											
BD-1510	B25 - Curing & post-tensioning (P205-P206)	14	100%	22Apr17, B25 - Curing & post-tensioning (P205-P206)											
<b>Deck 8 (P204-P203)</b>															
BD-1550	B25 - Concrete base portion (P204-P203)	1	100%	9May17, 9May17, B25 - Concrete base portion (P204-P203)											
BD-1570	B25 - Concrete top slab (P204-P203)	1	0%	13May17, 13May17, B25 - Concrete top slab (P204-P203)											
BD-1580	B25 - Curing & post-tensioning (P204-P203)	14	0%	15May17, 31May17, B25 - Curing & post-tensioning (P204-P203)											
BD-1530	B25 - Rebar & post-tender member (P204-P203)	14	100%	10Apr17, 25Apr17, 25Apr17, B25 - Rebar & post-tender member (P204-P203)											
BD-1540	B25 - Side formworks (P204-P203)	5	100%	5May17, 5May17, B25 - Side formworks (P204-P203)											
BD-1560	B25 - Top slab rebar (P204-P203)	5	100%	9May17, 12May17, B25 - Top slab rebar (P204-P203)											
<b>Deck 9 (P202-A201)</b>															
BD-1620	B25 - Concrete base portion (P202-A201)	1	0%	22Mar17 A, B1 - Concrete base portion (P202-A201)											
BD-1640	B25 - Concrete top slab (P202-A201)	1	0%	23Mar17 A, B1 - Concrete top slab (P202-A201)											
BD-1650	B25 - Curing & post-tensioning (P202-A201)	14	0%	3May17, 20May17, B25 - Curing & post-tensioning (P202-A201)											
BD-1660	B25 - Rebar & post-tender member (P202-A201)	14	0%	20May17, B25 - Rebar & post-tender member (P202-A201)											
BD-1610	B25 - Side formworks (P202-A201)	5	0%	11Jun17, 12Jun17, B25 - Side formworks (P202-A201)											
BD-1630	B25 - Top slab rebar (P202-A201)	5	0%	14Jun17, 19Jun17, B25 - Top slab rebar (P202-A201)											
<b>Bridge 1</b>															
<b>Deck 1 (P105-P107)</b>															
BD-1250	B1 - Concrete base portion (P105-P107)	1	100%	22Mar17 A, B1 - Concrete base portion (P105-P107)											
BD-1260	B1 - Concrete top slab (P105-P107)	1	100%	23Mar17 A, B1 - Concrete top slab (P105-P107)											
<b>Deck 2 (P108-A109)</b>															
BD-1300	B1 - Concrete base portion (P108-A109)	1	100%	24Mar17 A, B1 - Concrete base portion (P108-A109)											
BD-1320	B1 - Concrete top slab (P108-A109)	1	100%	25Mar17 A, B1 - Concrete top slab (P108-A109)											
<b>Deck 3 (P103-P104)</b>															
BD-1370	B1 - Concrete base portion (P103-P104)	1	100%	22Mar17 A, B1 - Concrete base portion (P103-P104)											
BD-1390	B1 - Concrete top slab (P103-P104)	1	100%	23Mar17 A, B1 - Concrete top slab (P103-P104)											
<b>Deck 4 (P102-P101)</b>															
BD-1440	B1 - Concrete base portion (P102-A101)	1	100%	22Mar17, B1 - Concrete base portion (P102-A101)											
BD-1460	B1 - Concrete top slab (P102-A101)	1	100%	23Mar17, B1 - Concrete top slab (P102-A101)											
BD-1470	B1 - Curing & post-tensioning (P102-A101)	14	100%	10Mar17 A, 23Mar17, B1 - Curing & post-tensioning (P102-A101)											
BD-1420	B1 - Rebar & post-tender member (P102-A101)	14	100%	23Mar17, B1 - Rebar & post-tender member (P102-A101)											
<b>Bridge 4</b>															
<b>Pile Cap</b>															
BD-0060	B4 - Pile Cap P402, A401 (2 nos)	21	100%	30Apr17, B4 - Pile Cap P402, A401 (2 nos)											
BD-0050	B4 - Pile Cap P403, P404 (2 nos)	21	100%	23Mar17 A, B4 - Pile Cap P403, P404 (2 nos)											
BD-0040	B4 - Pile Cap P405, P406 (2 nos)	21	100%	22Mar17 A, B4 - Pile Cap P405, P406 (2 nos)											
<b>Pier &amp; Abutment</b>															
BD-0090	B4 - Pier & Abutment P402, A401 (2 nos)	14	100%	30Apr17, B4 - Pier & Abutment P402, A401 (2 nos)											
BD-0080	B4 - Pier & Abutment P403, P404 (2 nos)	14	100%	23Mar17, B4 - Pier & Abutment P403, P404 (2 nos)											
BD-0070	B4 - Pier & Abutment P405, P406 (2 nos)	14	100%	22Mar17, B4 - Pier & Abutment P405, P406 (2 nos)											
<b>Deck 1 (P405-P406)</b>															
BD-130	B4 - Concrete base portion (P405-P406)	1	100%	23Mar17, B4 - Concrete base portion (P405-P406)											
BD-150	B4 - Concrete top slab (P405-P406)	1	100%	24Mar17, B4 - Concrete top slab (P405-P406)											
<b>Deck 2 (P404-P403)</b>															
BD-200	B4 - Concrete base portion (P404-P403)	1	100%	31Mar17, B4 - Concrete base portion (P404-P403)											
BD-220	B4 - Concrete top slab (P404-P403)	1	100%	8Apr17, 8Apr17, B4 - Concrete top slab (P404-P403)											
BD-230	B4 - Curing & post-tensioning (P404-P403)	14	100%	10Apr17, 25Apr17, B4 - Curing & post-tensioning (P404-P403)											
BD-190	B4 - Side formworks (P404-P403)	5	100%	25Mar17, 30Mar17, B4 - Side formworks (P404-P403)											
BD-210	B4 - Top slab rebar (P404-P403)	5	100%	10Apr17, 17Apr17, B4 - Top slab rebar (P404-P403)											
<b>Deck 3 (P402-A401)</b>															
BD-270	B4 - Concrete base portion (P402-A401)	1	100%	17May17, 18May17, B4 - Concrete base portion (P402-A401)											
BD-290	B4 - Concrete top slab (P402-A401)	1	0%	24May17, 25May17, B4 - Concrete top slab (P402-A401)											
BD-300	B4 - Curing & post-tensioning (P402-A401)	14	0%	25May17, 12Jun17, B4 - Curing & post-tensioning (P402-A401)											
BD-240	B4 - Falsework & Base F/W (P402-A401)	14	100%	9Apr17, 25Apr17, B4 - Falsework & Base F/W (P402-A401)											
BD-250	B4 - Rebar & post-tender member (P402-A401)	14	100%	5May17, B4 - Rebar & post-tender member (P402-A401)											
BD-260	B4 - Side formworks (P402-A401)	5	100%	15May17, 17May17, B4 - Side formworks (P402-A401)											
BD-280	B4 - Top slab rebar (P402-A401)	5	20%	19May17, 24May17, B4 - Top slab rebar (P402-A401)											

■ Remaining Level of Effort   
 ■ Actual Work   
 ■ Critical Remaining ...  
■ Actual Level of Effort   
 ■ Remaining Work   
 ◆ ◆ Milestone

Date	Revision	Checked	Approved
22/Mar/17	Monthly Progress 32		

HKBCF Infrastructure (Western Portion) - Monthly Progress 32 - Three Month Rolling Programme

Activity ID	Activity Name	Original Duration	% Comp	2017			
				Mar	Apr	May	Jun
<b>Bridge 7</b>							
<b>Bore Pile</b>							
B7-1000	B7 - Bore Pile P702-A701 (4 nos)	63	100%	22Mar17 A, B7 - Bore Pile P702-A701 (4 nos)			
B7-1000	B7 - Bore Pile P703-P705 (6 nos)	63	100%	22Mar17 A, B7 - Bore Pile P703-P705 (6 nos)			
B7-1010	B7 - Bore Pile P706-A707 (4 nos)	63	100%	22Mar17 A, B7 - Bore Pile P706-A707 (4 nos)			
<b>Pile Cap</b>							
B7-1050	B7 - Pile Cap P702, A701 (2 nos)	21	100%	24Mar17, B7 - Pile Cap P702, A701 (2 nos)			
B7-1030	B7 - Pile Cap P703, P704, P705 (3 nos)	21	100%	23Mar17, B7 - Pile Cap P703, P704, P705 (3 nos)			
B7-1040	B7 - Pile Cap P706, A707 (2 nos)	21	100%	23Mar17, B7 - Pile Cap P706, A707 (2 nos)			
<b>Pier &amp; Abutment</b>							
B7-1060	B7 - Pier & Abutment P702, A701 (2 nos)	14	100%	17Mar17 A			
B7-1060	B7 - Pier & Abutment P703, P704, P705 (3 nos)	14	100%	1Apr17 A, B7 - Pier & Abutment P703, P704, P705 (3 nos)			
B7-1070	B7 - Pier & Abutment P706, A707 (2 nos)	14	100%	23Mar17, B7 - Pier & Abutment P706, A707 (2 nos)			
<b>Deck 1 (P702-P705)</b>							
B7-1120	B7 - Concrete base portion (P702-P705)	1	100%	16Mar17 A			
B7-1140	B7 - Concrete top slab (P702-P705)	1	100%	27Mar17			
B7-1150	B7 - Curing & post-tensioning (P702-P705)	14	100%	28Mar17			
B7-1130	B7 - Top slab rebar (P702-P705)	5	100%	25Mar17, B7 - Top slab rebar (P702-P705)			
<b>Deck 2 (P706-A707)</b>							
B7-1150	B7 - Concrete base portion (P706-A707)	1	100%	25Apr17			
B7-1210	B7 - Concrete top slab (P706-A707)	1	100%	3May17			
B7-1220	B7 - Curing & post-tensioning (P706-A707)	14	35.71%	3May17			
B7-1150	B7 - Falswork & Base F/W (P706-A707)	14	100%	9Mar17 A			
B7-1170	B7 - Rebar & post-tender member (P706-A707)	14	100%	22Apr17, B7 - Rebar & post-tender member (P706-A707)			
B7-1180	B7 - Side formwork (P706-A707)	5	100%	20Apr17			
B7-1200	B7 - Top slab rebar (P706-A707)	5	100%	21Apr17			
<b>Deck 3 (P702-A701)</b>							
B7-1260	B7 - Concrete base portion (P702-A701)	1	0%	25Mar17			
B7-1260	B7 - Concrete top slab (P702-A701)	1	0%	11Apr17, B7 - Falswork & Base F/W (P702-A701)			
B7-1250	B7 - Curing & post-tensioning (P702-A701)	14	0%	18Mar17			
B7-1230	B7 - Falswork & Base F/W (P702-A701)	14	100%	25Mar17			
B7-1240	B7 - Rebar & post-tender member (P702-A701)	14	17.65%	18Mar17			
B7-1260	B7 - Side formwork (P702-A701)	5	0%	24May17			
B7-1270	B7 - Top slab rebar (P702-A701)	5	0%	11Jun17			
<b>Bridge 8</b>							
<b>Bore Pile</b>							
B8-1000	B8 - Bore Pile P802, A801 (4 nos)	63	100%	22Mar17 A, B8 - Bore Pile P802, A801 (4 nos)			
B8-1000	B8 - Bore Pile P803, P804 (4 nos)	63	100%	22Mar17 A, B8 - Bore Pile P803, P804 (4 nos)			
B8-1010	B8 - Bore Pile P805, A806 (4 nos)	63	100%	22Mar17 A, B8 - Bore Pile P805, A806 (4 nos)			
<b>Pile Cap</b>							
B8-1050	B8 - Pile Cap P802, A801 (2 nos)	21	100%	16Mar17 A			
B8-1030	B8 - Pile Cap P803, P804 (2 nos)	21	100%	23Mar17, B8 - Pile Cap P803, P804 (2 nos)			
B8-1040	B8 - Pile Cap P805, A806 (2 nos)	21	100%	23Mar17, B8 - Pile Cap P805, A806 (2 nos)			
<b>Pier &amp; Abutment</b>							
B8-1060	B8 - Pier & Abutment P802, A801 (2 nos)	14	100%	16Mar17 A			
B8-1060	B8 - Pier & Abutment P803, P804 (2 nos)	14	100%	23Mar17, B8 - Pier & Abutment P803, P804 (2 nos)			
B8-1070	B8 - Pier & Abutment P805, A806 (2 nos)	14	100%	16Mar17 A			
<b>Deck 1 (P803-P804)</b>							
B8-1120	B8 - Concrete base portion (P803-P804)	1	100%	9Mar17 A			
B8-1140	B8 - Concrete top slab (P803-P804)	1	100%	19Apr17			
B8-1150	B8 - Curing & post-tensioning (P803-P804)	14	100%	25Apr17			
B8-1000	B8 - Falswork & Base F/W (P803-P804)	14	100%	25Mar17, B8 - Falswork & Base F/W (P803-P804)			
B8-1100	B8 - Rebar & post-tender member (P803-P804)	14	100%	27Mar17			
B8-1110	B8 - Side formwork (P803-P804)	5	100%	10Apr17			
B8-1130	B8 - Top slab rebar (P803-P804)	5	100%	20Apr17			
<b>Deck 2 (P805-A806)</b>							
B8-1150	B8 - Concrete base portion (P805-A806)	1	100%	23May17			
B8-1210	B8 - Concrete top slab (P805-A806)	1	100%	31May17			
B8-1220	B8 - Curing & post-tensioning (P805-A806)	14	35.71%	31May17			
B8-1150	B8 - Falswork & Base F/W (P805-A806)	14	100%	5Apr17			
B8-1170	B8 - Rebar & post-tender member (P805-A806)	14	100%	24Apr17, B8 - Falswork & Base F/W (P805-A806)			
B8-1180	B8 - Side formwork (P805-A806)	5	100%	3May17			
B8-1200	B8 - Top slab rebar (P805-A806)	5	100%	17May17			
<b>Deck 3 (P802-A801)</b>							
B8-1260	B8 - Concrete base portion (P802-A801)	1	0%	7Apr17			
B8-1230	B8 - Falswork & Base F/W (P802-A801)	14	100%	27Apr17, B8 - Falswork & Base F/W (P802-A801)			
B8-1240	B8 - Rebar & post-tender member (P802-A801)	14	17.65%	7Apr17			
B8-1250	B8 - Side formwork (P802-A801)	5	0%	25Apr17			
B8-1270	B8 - Top slab rebar (P802-A801)	5	0%	25Apr17			
<b>Bridge 9</b>							
<b>Pile Cap</b>							
B9-1040	B9 - Pile cap P902, P903 (2 nos)	14	100%	22Mar17, B9 - Pile cap P902, P903 (2 nos)			
B9-1050	B9 - Pile cap P904, A905 (2 nos)	21	100%	23Mar17, B9 - Pile cap P904, A905 (2 nos)			
<b>Pier &amp; Abutment</b>							
B9-1060	B9 - Pier & Abutment P902, P903 (2 nos)	14	100%	23Mar17, B9 - Pier & Abutment P902, P903 (2 nos)			
B9-1060	B9 - Pier & Abutment P904, A905 (2 nos)	14	100%	24Mar17, B9 - Pier & Abutment P904, A905 (2 nos)			

█ Remaining Level of Effort   
 █ Actual Work   
 █ Critical Remaining ...  
█ Actual Level of Effort   
 █ Remaining Work   
 ◆ Milestone

Date	Revision	Checked	Approved
22/Mar/17	Monthly Progress 32		

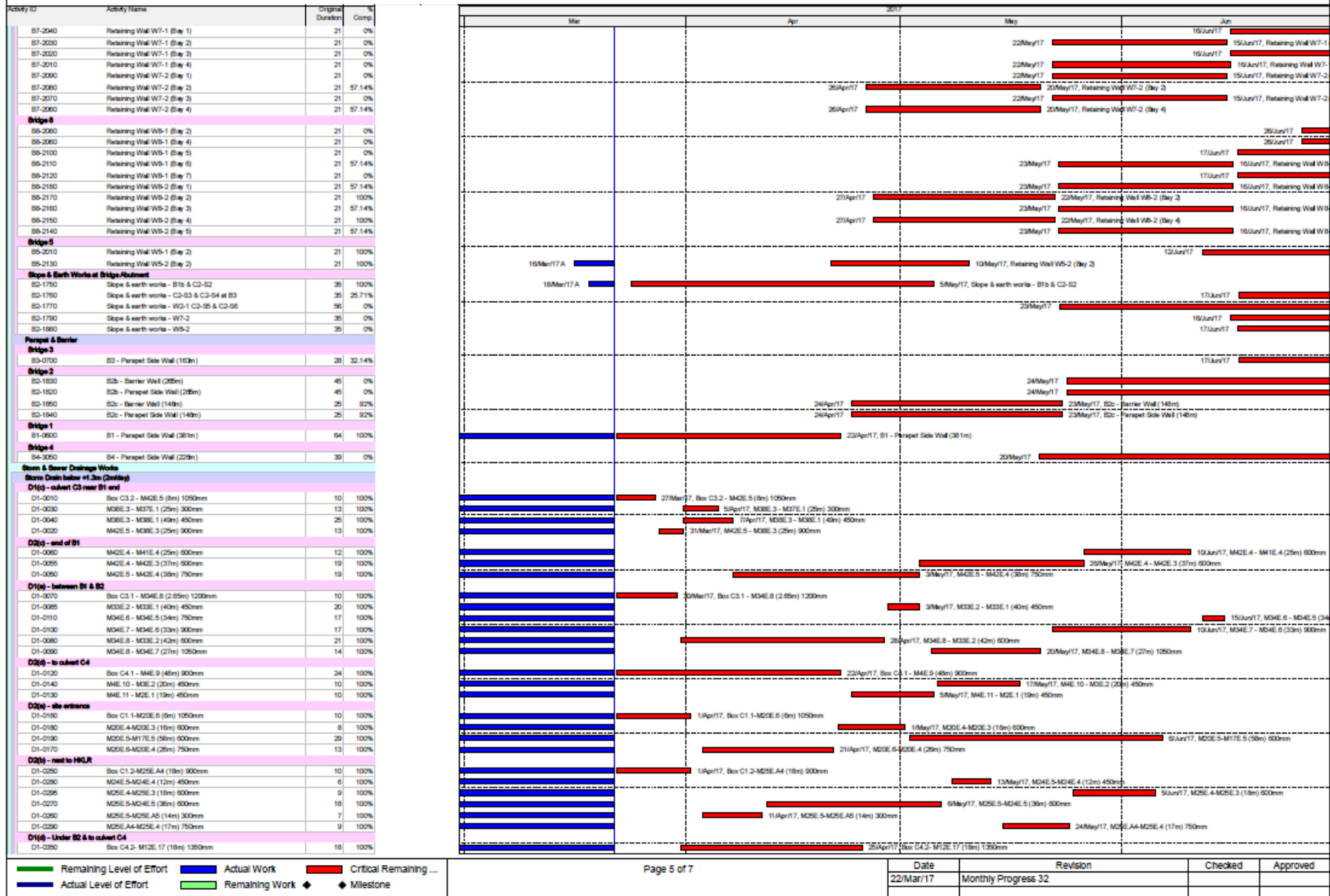
HKCBF Infrastructure (Western Portion) - Monthly Progress 32 - Three Month Rolling Programme

Activity ID	Activity Name	Original Duration	% Comp.	2017			
				Mar	Apr	May	Jun
<b>Deck 1 (A001-P002)</b>							
85-1130	85 - Concrete base portion (A001-P002)	1	100%				
85-1170	85 - Concrete top slab (A001-P002)	1	100%				
<b>Deck 2 (P002-P003)</b>							
85-1220	85 - Concrete base portion (P002-P003)	1	100%				
85-1240	85 - Concrete top slab (P002-P003)	1	100%				
<b>Deck 3 (P003-P004)</b>							
85-1250	85 - Concrete base portion (P003-P004)	1	100%				
85-1310	85 - Concrete top slab (P003-P004)	1	100%				
85-1280	85 - Side formwork (P003-P004)	5	100%				
<b>Deck 4 (P004-A005)</b>							
85-1360	85 - Concrete base portion (P004-A005)	1	100%				
85-1360	85 - Concrete top slab (P004-A005)	1	0%				
85-1360	85 - Curing & post-tensioning (P004-A005)	14	0%				
85-1340	85 - Rebar & post-tender member (P004-A005)	14	100%				
85-1360	85 - Side formwork (P004-A005)	5	100%				
85-1370	85 - Top slab rebar (P004-A005)	5	80%				
<b>Bridge 5</b>							
<b>Pile Cap</b>							
85-1040	85 - Pile Cap P502, A003 (2 nos)	14	100%				
85-1060	85 - Pile Cap P504, P505 (2 nos)	14	100%				
85-1070	85 - Pile Cap P507, A008 (2 nos)	21	100%				
<b>Pier &amp; Abutment</b>							
85-1080	85 - Pier & Abutment P502, A003 (2 nos)	14	100%				
85-1100	85 - Pier & Abutment P505, P504 (2 nos)	14	100%				
85-1110	85 - Pier & Abutment P507, A008 (2 nos)	14	100%				
<b>Deck 1 (P501-P502)</b>							
85-1430	85 - Concrete base portion (P501-P502)	1	0%				
85-1450	85 - Concrete top slab (P501-P502)	1	0%				
85-1460	85 - Curing & post-tensioning (P501-P502)	14	0%				
85-1400	85 - Falsework & Base FW (P501-P502)	14	0%				
85-1410	85 - Rebar & post-tender member (P501-P502)	14	0%				
85-1420	85 - Side formwork (P501-P502)	5	0%				
85-1440	85 - Top slab rebar (P501-P502)	5	0%				
<b>Deck 2 (P502-A003)</b>							
85-1500	85 - Concrete base portion (P502-A003)	1	0%				
85-1520	85 - Concrete top slab (P502-A003)	1	0%				
85-1530	85 - Curing & post-tensioning (P502-A003)	14	0%				
85-1470	85 - Falsework & Base FW (P502-A003)	14	0%				
85-1480	85 - Rebar & post-tender member (P502-A003)	14	0%				
85-1490	85 - Side formwork (P502-A003)	5	0%				
85-1510	85 - Top slab rebar (P502-A003)	5	0%				
<b>Deck 3 (P501b-P504)</b>							
85-1570	85 - Concrete base portion (P501b-P504)	1	0%				
85-1560	85 - Concrete top slab (P501b-P504)	1	0%				
85-1580	85 - Curing & post-tensioning (P501b-P504)	14	0%				
85-1540	85 - Falsework & Base FW (P501b-P504)	14	0%				
85-1550	85 - Rebar & post-tender member (P501b-P504)	14	0%				
85-1560	85 - Side formwork (P501b-P504)	5	0%				
85-1590	85 - Top slab rebar (P501b-P504)	5	0%				
<b>Deck 4 (P505-P506)</b>							
85-1640	85 - Concrete base portion (P505-P506)	1	100%				
85-1660	85 - Concrete top slab (P505-P506)	1	100%				
85-1670	85 - Curing & post-tensioning (P505-P506)	14	100%				
85-1610	85 - Falsework & Base FW (P505-P506)	14	100%				
85-1620	85 - Rebar & post-tender member (P505-P506)	14	100%				
85-1630	85 - Side formwork (P505-P506)	5	100%				
85-1650	85 - Top slab rebar (P505-P506)	5	100%				
<b>Deck 5 (P507-P508)</b>							
85-1680	85 - Falsework & Base FW (P507-P508)	14	100%				
85-1690	85 - Rebar & post-tender member (P507-P508)	14	100%				
<b>Auxiliary Structure</b>							
<b>Retaining Wall, Steps &amp; Earth Works</b>							
<b>Bridge 2#</b>							
82-1650	Retaining Wall RW1 (Bay 1)	21	42.86%				
82-1680	Retaining Wall RW1 (Bay 2)	21	0%				
82-1740	Retaining Wall W2-1 (Bay 1)	21	61.9%				
82-1730	Retaining Wall W2-1 (Bay 2)	21	100%				
82-1720	Retaining Wall W2-1 (Bay 3)	21	61.9%				
82-1710	Retaining Wall W2-1 (Bay 4)	21	100%				
<b>Bridge 4</b>							
84-3040	Retaining Wall W4-1 (Bay 1)	21	0%				
84-3030	Retaining Wall W4-1 (Bay 2)	21	9.52%				
84-3020	Retaining Wall W4-1 (Bay 3)	21	0%				
84-3010	Retaining Wall W4-1 (Bay 4)	21	9.52%				
<b>Bridge 7</b>							

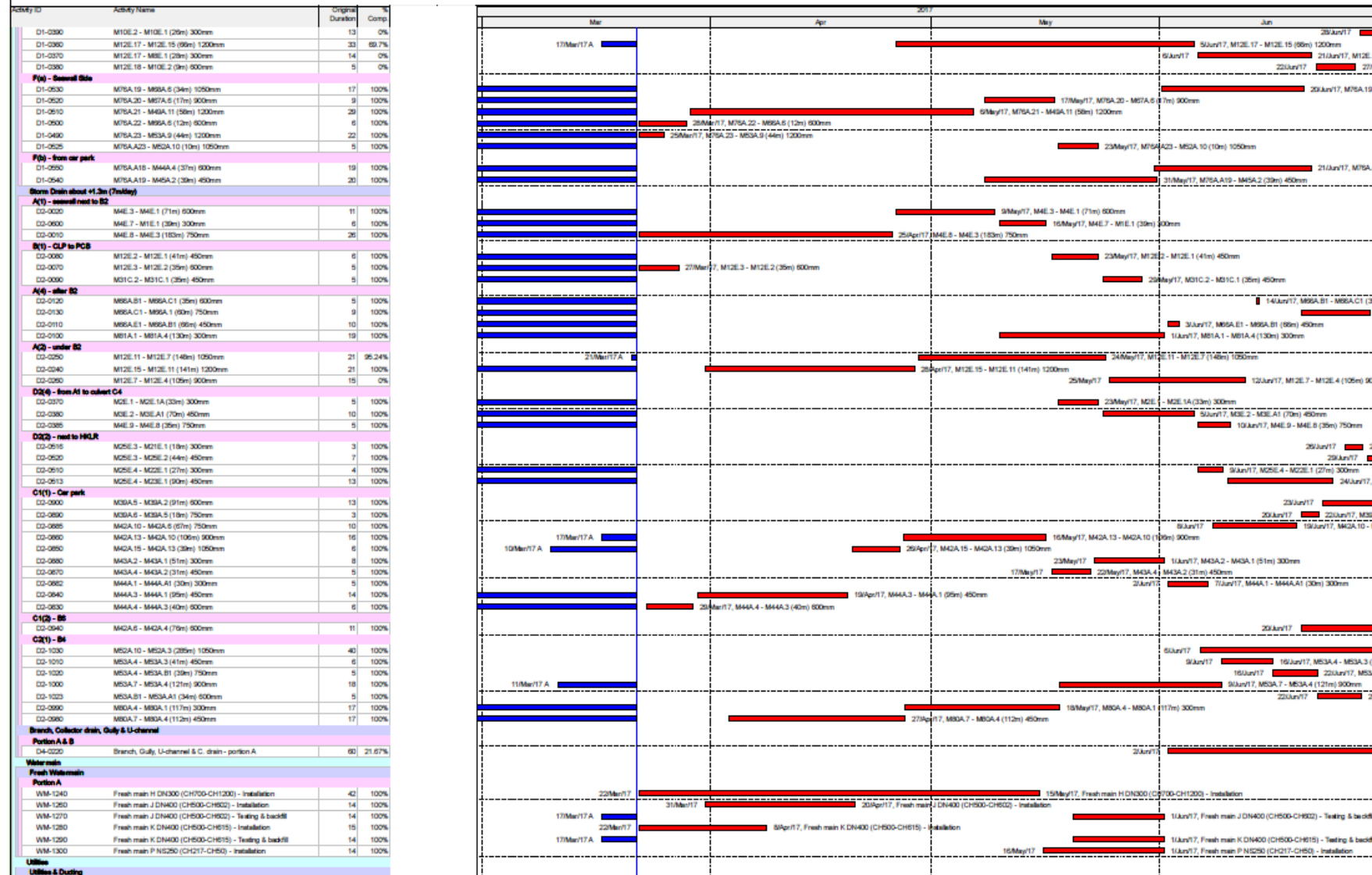
█ Remaining Level of Effort    █ Actual Work    █ Critical Remaining ...  
█ Actual Level of Effort    █ Remaining Work    ◆ Milestone

Date	Revision	Checked	Approved
22/Mar/17	Monthly Progress 32		

HKBCF Infrastructure (Western Portion) - Monthly Progress 32 - Three Month Rolling Programme



HKBCF Infrastructure (Western Portion) - Monthly Progress 32 - Three Month Rolling Programme



Date	Revision	Checked	Approved
22/Mar/17	Monthly Progress 32		

HKBCF Infrastructure (Western Portion) - Monthly Progress 32 - Three Month Rolling Programme

Activity ID	Activity Name	Original Duration	% Comp.	2017			
				Mar	Apr	May	Jun
<b>Portion D2 (side entrance)</b>							
UT-1240	Tel Duct for Retaining wall at Bridge 2	55	20%			18/May/17	
<b>Portion A (below CLP sub-station)</b>							
UT-1250	Tel Duct for Abutment A301 at Bridge 3	28	30.23%				17/May/17
<b>Cable Duct (TCSS, BDV &amp; LV)</b>							
<b>Portion A &amp; B</b>							
UT-1230	Cable duct for TCSS, ELV, LV & other department (HY201303 c)	21	0%				
UT-1210	Cable duct for TCSS, ELV, LV & other department (Sub-station c)	21	0%				
<b>Road Works</b>							
<b>Blumex Works</b>							
<b>Bridge Area (Waterproofing &amp; base course)</b>							
RW-1014	SOL200 (CH16253-CH15963) Bridge 2c North	16	0%			24/May/17	
RW-1024	SOL200R (CH16253-CH15963) Bridge 2c South	16	0%				13/Jun/17, SOL200 (CH16253-CH15963)
<b>Road Furniture &amp; Fit out</b>							
<b>Probers H-Pile &amp; Cap for Sign Gantry</b>							
RW-1710	Cap - D5305, D523, D524 (9 no.)	49	0%				
RW-1716	Cap - GT100, GT119, D5201 (7 no.)	49	44.2%		31/Mar/17, Cap - D5305, D523, D524 (9 no.)		
RW-1770	Cap - GT122 (2 no.)	14	0%		31/Mar/17, Cap - GT100, GT119, D5301 (7 no.)		
RW-1740	Cap - GT1405, FACD302, FACD301 (3x2 no.)	42	100%				
RW-1720	H-pile - D5305, D523, D524 (3x3x4 no.)	70	61.43%			4/May/17	
RW-1730	H-pile - GT122 (2x4 no.)	56	14.29%	9/Mar/17A	4/May/17, H-pile - D5305, D523, D524 (3x3x4 no.)	3/May/17, H-pile - GT122 (2x4 no.)	
<b>Road Lighting Design &amp; Submission</b>							
RW-203D	Order & delivery of lighting material for Portion I & H	60	0%			18/Apr/17, Order & delivery of lighting material for Portion I & H	
RW-207D	Submit & approval of road lighting system material	90	0%			18/Apr/17, Submit & approval of road lighting system material	
<b>Lighting &amp; road furniture for Portion H</b>							
RW-163D	cable duct to Bridge 1a	21	100%			10/May/17	20/May/17, cable duct to Bridge 1a
RW-164D	Lighting & Power to Bridge 1a	21	100%		19/Apr/17	9/May/17, Lighting & Power to Bridge 1a	
RW-166D	Wearing & Friction Course for Bridge 1a	21	100%			30/May/17	25/Jun/17, Wearing
<b>Lighting &amp; Power</b>							
RW-165D	Energisation of power by CLP	0	0%			◆ Energisation of power by CLP	
<b>Landscape</b>							
<b>Submit &amp; design of irrigation system</b>							
RW-204D	Order & delivery of Pipe material to site	120	0%			22/May/17	
RW-203D	prepare, submit & approval of irrigation system design	120	25%			21/May/17, prepare, submit & approval of irrigation system design	

■ Remaining Level of Effort   
 ■ Actual Work   
 ■ Critical Remaining ...  
■ Actual Level of Effort   
 ■ Remaining Work   
 ◆ ◆ Milestone

Date	Revision	Checked	Approved
22/Mar/17	Monthly Progress 32		