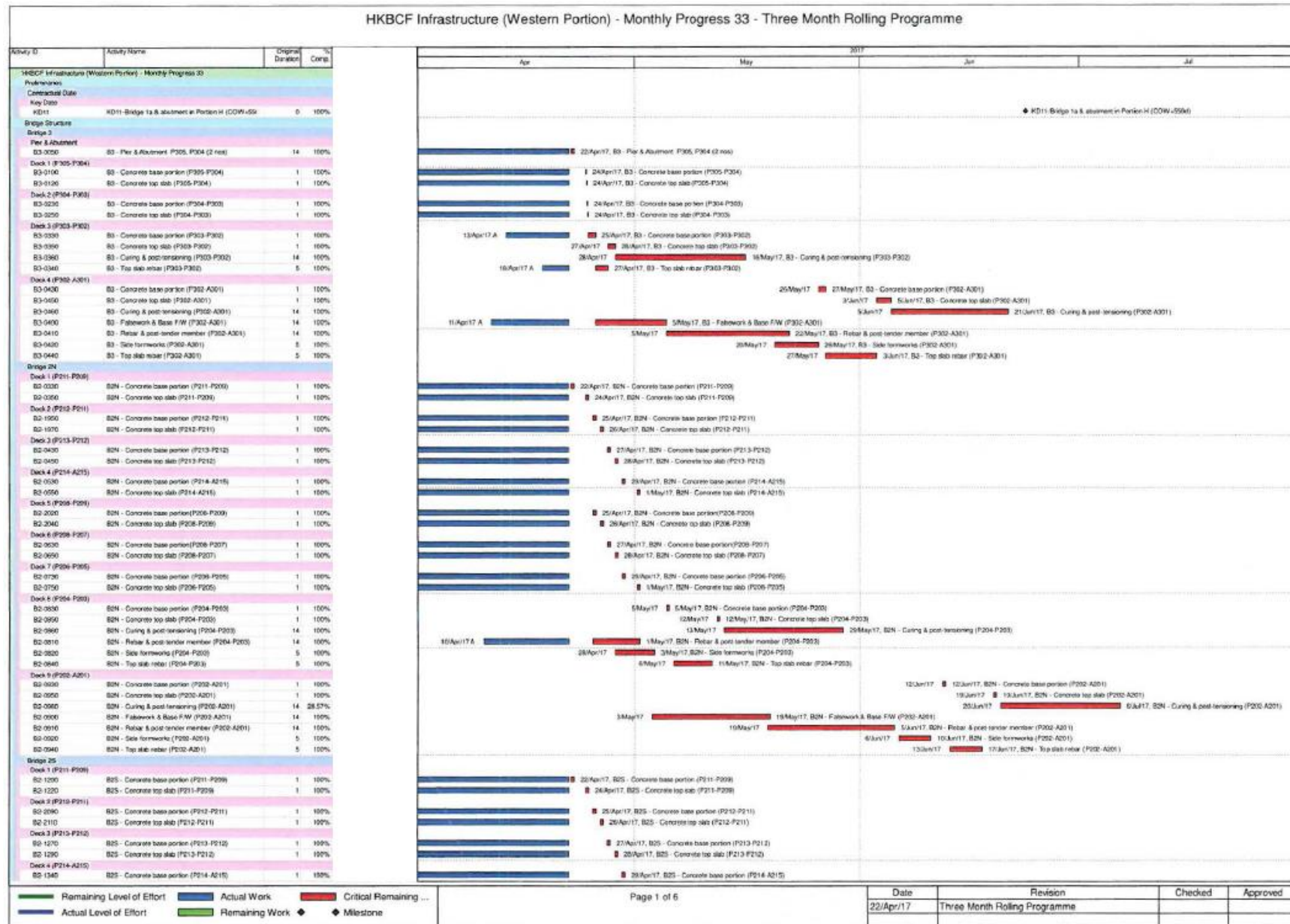
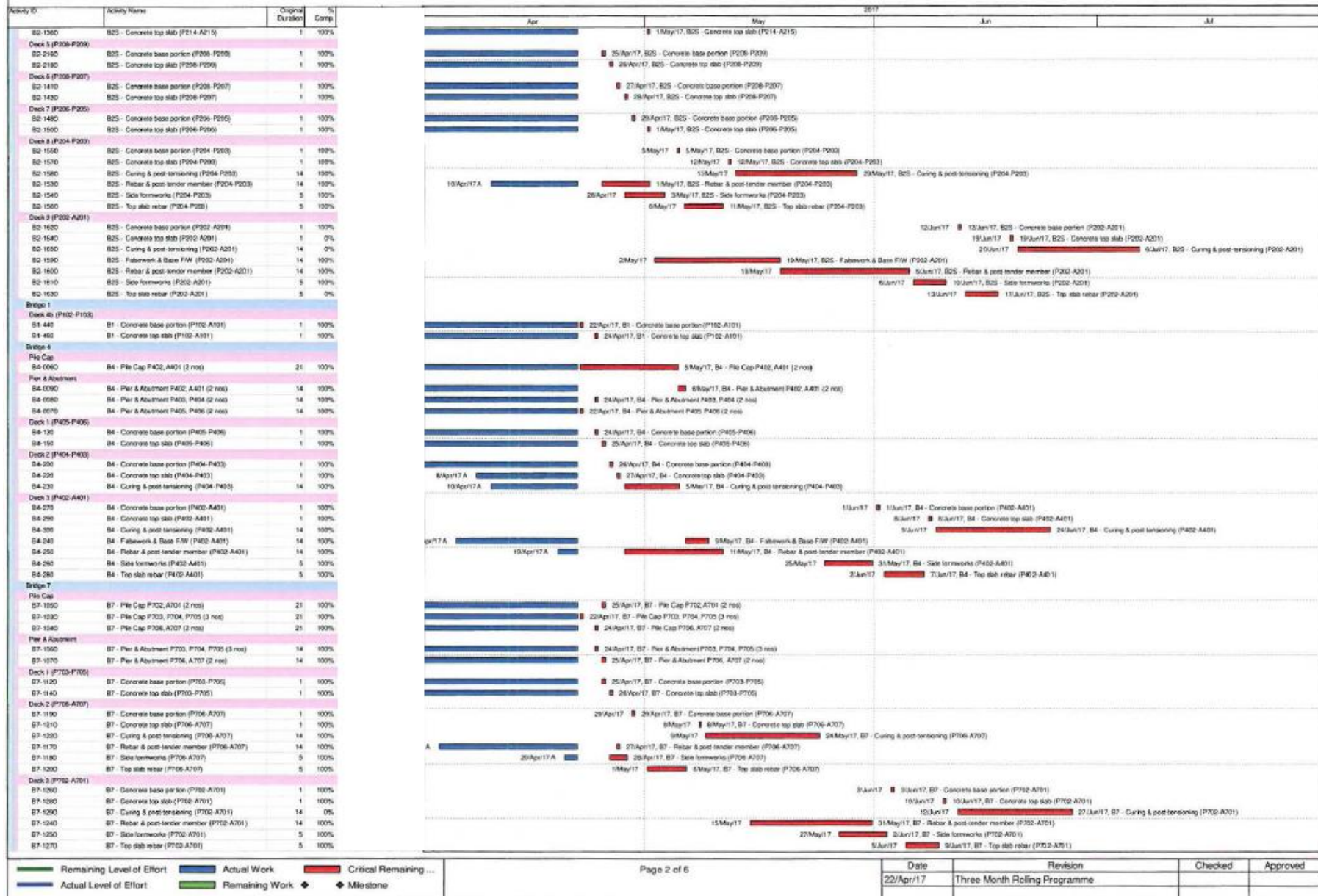


HKBCF Infrastructure (Western Portion) - Monthly Progress 33 - Three Month Rolling Programme



Date	Revision	Checked	Approved
22/Apr/17	Three Month Rolling Programme		

HKBCF Infrastructure (Western Portion) - Monthly Progress 33 - Three Month Rolling Programme



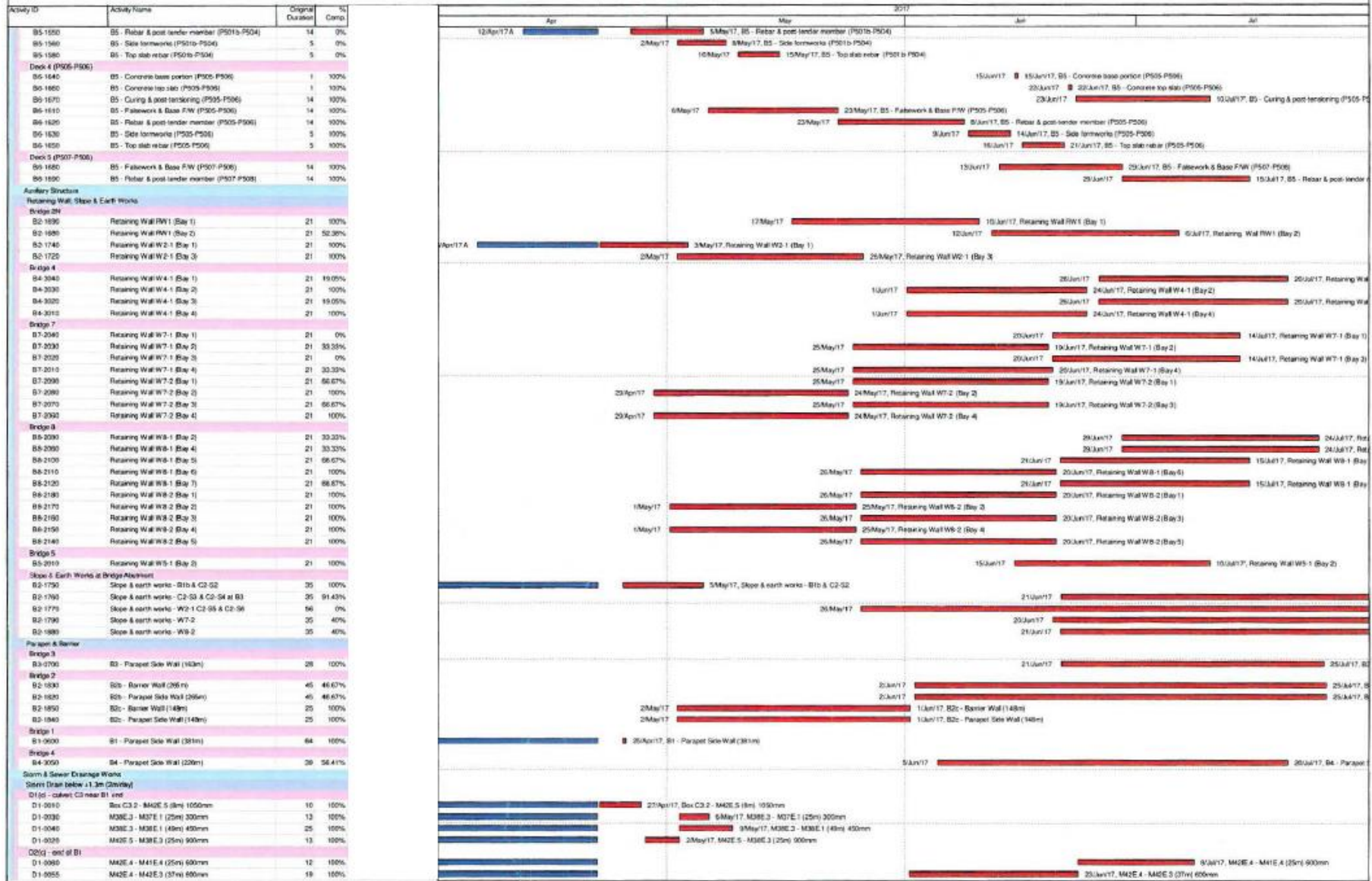
HKBCF Infrastructure (Western Portion) - Monthly Progress 33 - Three Month Rolling Programme

Activity ID	Activity Name	Original Duration	% Comp.	2017				
				Apr	May	Jun	Jul	Aug
Bridge 0								
Pile Cap								
BS-1000	BS - Pile Cap P802, A801 (2 nos)	21	100%	23/Apr/17, BS - Pile Cap P802, A801 (2 nos)				
BS-1003	BS - Pile Cap P803, P804 (2 nos)	21	100%	22/Apr/17, BS - Pile Cap P803, P804 (2 nos)				
BS-1040	BS - Pile Cap P805, A806 (2 nos)	21	100%	24/Apr/17, BS - Pile Cap P805, A806 (2 nos)				
Pier & Abutment								
BS-1080	BS - Pier & Abutment P802, A801 (2 nos)	14	100%	17/May/17, BS - Pier & Abutment P802, A801 (2 nos)				
BS-1065	BS - Pier & Abutment P803, P804 (2 nos)	14	100%	24/Apr/17, BS - Pier & Abutment P803, P804 (2 nos)				
BS-1070	BS - Pier & Abutment P805, A806 (2 nos)	14	100%	25/Apr/17, BS - Pier & Abutment P805, A806 (2 nos)				
Deck 1 (P803-P804)								
BS-1100	BS - Concrete base portion (P803-P804)	1	100%	15/Apr/17 A				
BS-1140	BS - Concrete top slab (P803-P804)	1	100%	25/Apr/17, BS - Concrete base portion (P803-P804)				
BS-1150	BS - Curing & post-tensioning (P803-P804)	14	100%	29/Apr/17, BS - Concrete top slab (P803-P804)				
BS-1130	BS - Top slab rebar (P803-P804)	5	100%	13/May/17				
Deck 2 (P805-A806)								
BS-1190	BS - Concrete base portion (P805-A806)	1	100%	20/Apr/17 A				
BS-1210	BS - Concrete top slab (P805-A806)	1	100%	26/Apr/17, BS - Top slab rebar (P803-P804)				
BS-1220	BS - Curing & post-tensioning (P805-A806)	14	100%	26/May/17, BS - Concrete base portion (P805-A806)				
BS-1100	BS - Fabricwork & Base F/W (P805-A806)	14	100%	3/Jun/17, BS - Concrete top slab (P805-A806)				
BS-1170	BS - Rebar & post-tension member (P805-A806)	14	100%	5/Jun/17				
BS-1180	BS - Site formwork (P805-A806)	5	100%	25/Jun/17, BS - Curing & post-tensioning (P805-A806)				
BS-1200	BS - Top slab rebar (P805-A806)	5	100%	25/Jun/17, BS - Curing & post-tensioning (P805-A806)				
Deck 3 (P805-A801)								
BS-1260	BS - Concrete base portion (P802-A801)	1	100%	7/Apr/17 A				
BS-1230	BS - Fabricwork & Base F/W (P802-A801)	14	100%	27/Apr/17, BS - Fabricwork & Base F/W (P805-A806)				
BS-1240	BS - Rebar & post-tension member (P802-A801)	14	100%	8/May/17				
BS-1250	BS - Site formwork (P802-A801)	5	100%	23/May/17, BS - Rebar & post-tension member (P805-A806)				
Bridge 1								
Pile Cap								
BS-1040	BS - Pile cap P802, P803 (2 nos)	14	100%	22/Apr/17, BS - Pile cap P802, P803 (2 nos)				
BS-1050	BS - Pile cap P804, A805 (2 nos)	21	100%	24/Apr/17, BS - Pile cap P804, A805 (2 nos)				
Pier & Abutment								
BS-1080	BS - Pier & Abutment P802, P803 (2 nos)	14	100%	24/Apr/17, BS - Pier & Abutment P802, P803 (2 nos)				
BS-1090	BS - Pier & Abutment P804, A805 (2 nos)	14	100%	25/Apr/17, BS - Pier & Abutment P804, A805 (2 nos)				
Deck 1 (A801-P802)								
BS-1100	BS - Concrete base portion (A801-P802)	1	100%	25/Apr/17, BS - Concrete base portion (A801-P802)				
BS-1170	BS - Concrete top slab (A801-P802)	1	100%	26/Apr/17, BS - Concrete top slab (A801-P802)				
Deck 2 (P802-P803)								
BS-1200	BS - Concrete base portion (P802-P803)	1	100%	27/Apr/17, BS - Concrete base portion (P802-P803)				
BS-1240	BS - Concrete top slab (P802-P803)	1	100%	28/Apr/17, BS - Concrete top slab (P802-P803)				
Deck 3 (P803-P804)								
BS-1290	BS - Concrete base portion (P803-P804)	1	100%	23/Apr/17, BS - Concrete base portion (P803-P804)				
BS-1310	BS - Concrete top slab (P803-P804)	1	100%	13/May/17, BS - Concrete top slab (P803-P804)				
Deck 4 (P804-A805)								
BS-1300	BS - Concrete base portion (P804-A805)	1	100%	18/Apr/17 A				
BS-1380	BS - Concrete top slab (P804-A805)	1	100%	2/May/17, BS - Concrete base portion (P804-A805)				
BS-1390	BS - Curing & post-tensioning (P804-A805)	14	100%	6/May/17, 6/May/17, BS - Concrete top slab (P804-A805)				
BS-1370	BS - Top slab rebar (P804-A805)	5	100%	8/May/17				
Bridge 5								
Pile Cap								
BS-1040	BS - Pile Cap P502, A503 (2 nos)	14	100%	22/Apr/17, BS - Pile Cap P502, A503 (2 nos)				
BS-1090	BS - Pile Cap P504, P505 (2 nos)	14	100%	23/Apr/17, BS - Pile Cap P504, P505 (2 nos)				
BS-1070	BS - Pile Cap P507, A508 (2 nos)	21	100%	24/Apr/17, BS - Pile Cap P507, A508 (2 nos)				
Pier & Abutment								
BS-1080	BS - Pier & Abutment P502, A503 (2 nos)	14	100%	24/Apr/17, BS - Pier & Abutment P502, A503 (2 nos)				
BS-1100	BS - Pier & Abutment P505, P504 (2 nos)	14	100%	24/Apr/17, BS - Pier & Abutment P505, P504 (2 nos)				
BS-1110	BS - Pier & Abutment P507, A508 (2 nos)	14	100%	25/Apr/17, BS - Pier & Abutment P507, A508 (2 nos)				
Deck 1 (P501-P502)								
BS-1430	BS - Concrete base portion (P501-P502)	1	0%	9/May/17				
BS-1450	BS - Concrete top slab (P501-P502)	1	0%	9/May/17, BS - Concrete base portion (P501-P502)				
BS-1460	BS - Curing & post-tensioning (P501-P502)	14	0%	15/May/17, 15/May/17, BS - Concrete top slab (P501-P502)				
BS-1410	BS - Rebar & post-tension member (P501-P502)	14	0%	17/May/17				
BS-1420	BS - Site formwork (P501-P502)	5	0%	12/Apr/17 A				
BS-1440	BS - Top slab rebar (P501-P502)	5	0%	2/May/17				
Deck 2 (P502-A503)								
BS-1500	BS - Concrete base portion (P502-A503)	1	0%	9/May/17				
BS-1520	BS - Concrete top slab (P502-A503)	1	0%	15/May/17, 15/May/17, BS - Concrete top slab (P502-A503)				
BS-1470	BS - Fabricwork & Base F/W (P502-A503)	14	0%	17/May/17				
BS-1480	BS - Rebar & post-tension member (P502-A503)	14	0%	3/Jun/17, BS - Curing & post-tensioning (P501-P502)				
BS-1490	BS - Site formwork (P502-A503)	5	0%	2/May/17				
BS-1510	BS - Top slab rebar (P502-A503)	5	0%	10/May/17				
Deck 3 (P503-P504)								
BS-1570	BS - Concrete base portion (P503-P504)	1	0%	6/May/17				
BS-1590	BS - Concrete top slab (P503-P504)	1	0%	23/May/17, BS - Fabricwork & Base F/W (P502-A503)				
BS-1600	BS - Curing & post-tensioning (P503-P504)	14	0%	8/Jun/17, BS - Rebar & post-tension member (P502-A503)				

█ Remaining Level of Effort
 █ Actual Work
 █ Critical Remaining ...
█ Actual Level of Effort
 █ Remaining Work
 ◆ Milestone

Date	Revision	Checked	Approved
22/Apr/17	Three Month Rolling Programme		

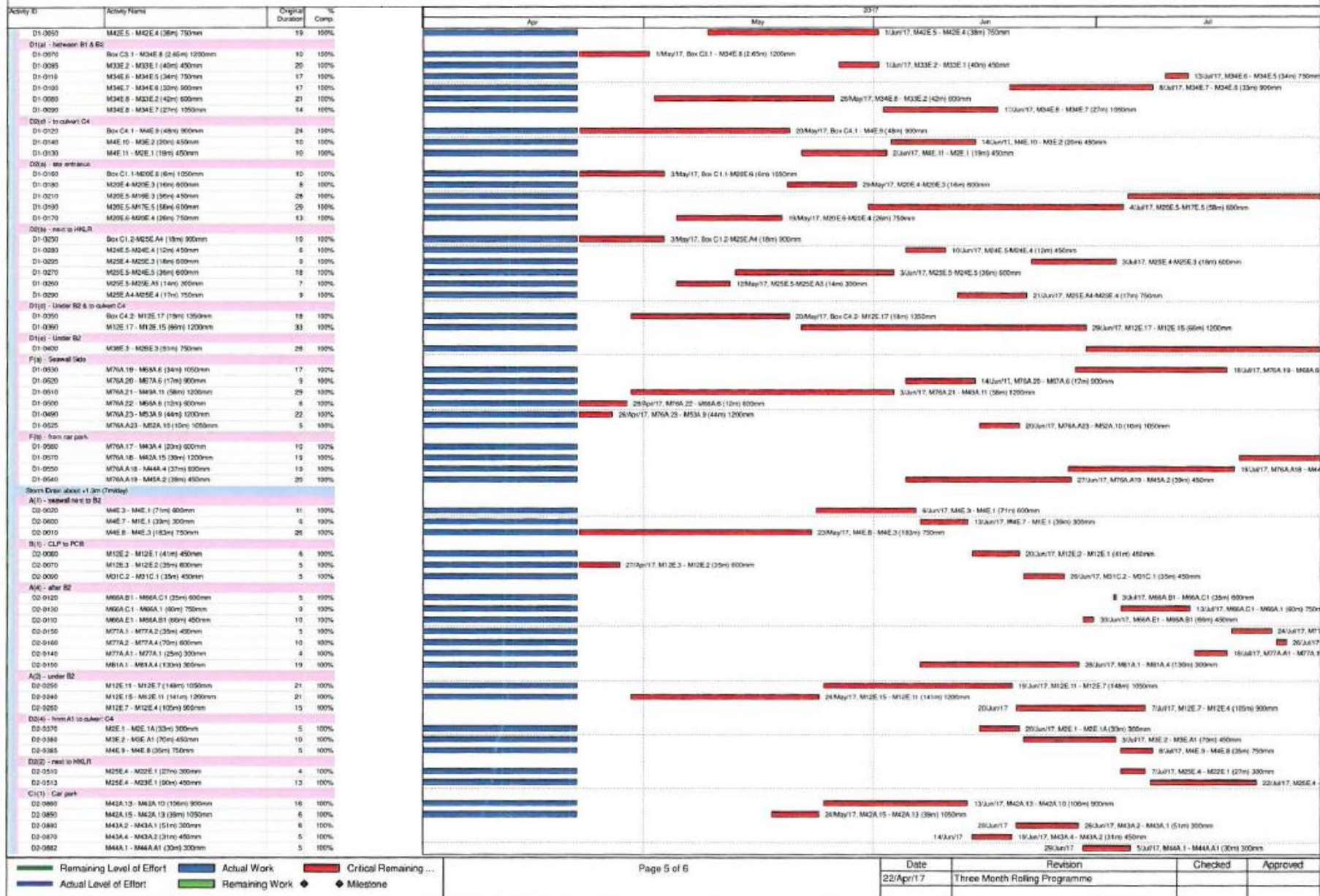
HKBCF Infrastructure (Western Portion) - Monthly Progress 33 - Three Month Rolling Programme



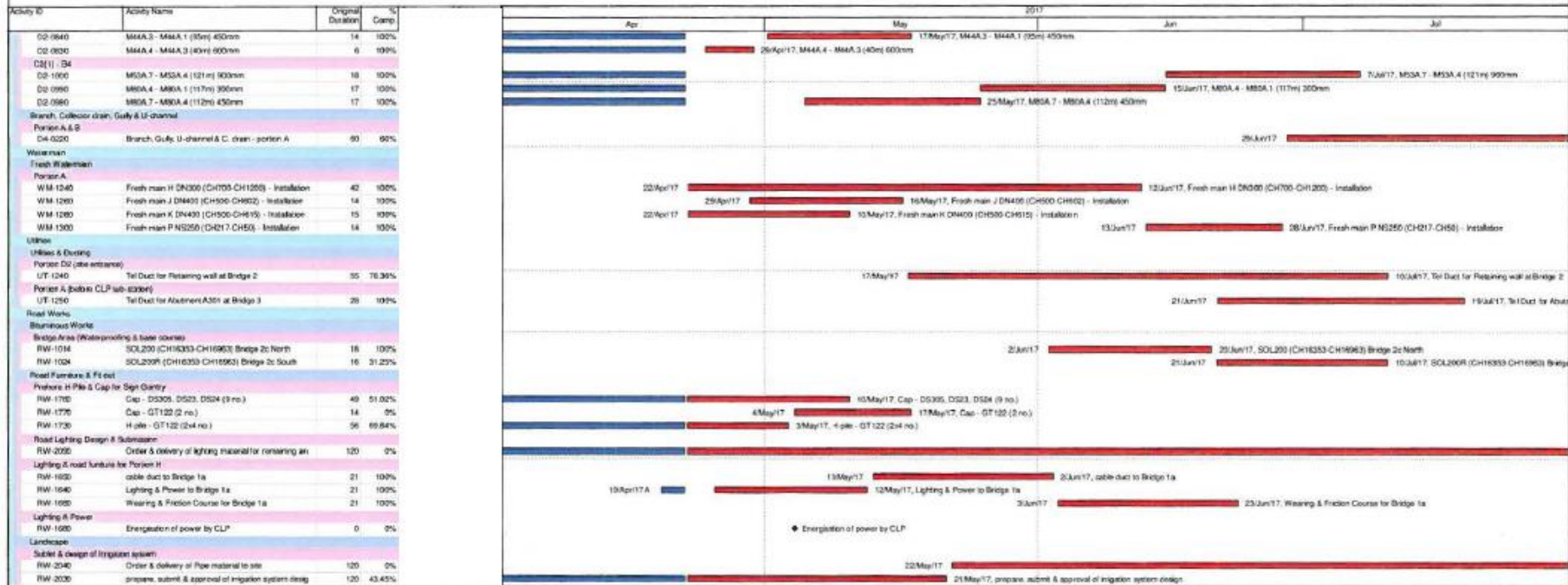
■ Remaining Level of Effort
 ■ Actual Work
 ■ Critical Remaining ...
■ Actual Level of Effort
 ■ Remaining Work
 ◆ Milestone

Date	Revision	Checked	Approved
22/Apr/17	Three Month Rolling Programme		

HKBCF Infrastructure (Western Portion) - Monthly Progress 33 - Three Month Rolling Programme



HKBCF Infrastructure (Western Portion) - Monthly Progress 33 - Three Month Rolling Programme



■ Remaining Level of Effort
 ■ Actual Work
 ■ Critical Remaining ...
■ Actual Level of Effort
 ■ Remaining Work
 ◆ Milestone

Date	Revision	Checked	Approved
22/Apr/17	Three Month Rolling Programme		