



### HKBCF Infrastructure (Western Portion) - Monthly Progress 34 - Three Month Rolling Programme





### HKBCF Infrastructure (Western Portion) - Monthly Progress 34 - Three Month Rolling Programme

Activity ID	Activity Name	Original Duration	% Comp.	2017				
				May	Jun	Jul	Aug	
BS-1180	BS - Concrete base portion (P905-A906)	1	100%	23May17	23May17, BS - Concrete base portion (P905-A906)			
BS-1216	BS - Concrete top slab (P905-A906)	1	100%	31May17	31May17, BS - Concrete top slab (P905-A906)			
BS-1226	BS - Curing & post-tensioning (P905-A906)	14	100%	1Jun17	1Jun17, BS - Curing & post-tensioning (P905-A906)			
BS-1170	BS - Rebar & post-tender member (P905-A906)	14	100%	17May17 A	19May17 A, BS - Rebar & post-tender member (P905-A906)			
BS-1180	BS - Side formworks (P905-A906)	5	100%	24May17	23May17, BS - Side formworks (P905-A906)			
BS-1204	BS - Top slab rebar (P905-A906)	5	100%	24May17	23May17, BS - Top slab rebar (P905-A906)			
Deck 3 (P902-A901)								
BS-1290	BS - Concrete base portion (P902-A901)	1	100%			25Jun17	25Jun17, BS - Concrete base portion (P902-A901)	
BS-1298	BS - Concrete top slab (P902-A901)	1	100%			4Jul17	4Jul17, BS - Concrete top slab (P902-A901)	
BS-1299	BS - Curing & post-tensioning (P902-A901)	14	100%			5Jul17	20Jul17, BS - Curing & post-tensioning (P902-A901)	
BS-1240	BS - Rebar & post-tender member (P902-A901)	14	100%			7Jul17	22Jun17, BS - Rebar & post-tender member (P902-A901)	
BS-1256	BS - Side formworks (P902-A901)	5	100%			29Jun17	24Jun17, BS - Side formworks (P902-A901)	
BS-1278	BS - Top slab rebar (P902-A901)	5	100%			27Jun17	3Jul17, BS - Top slab rebar (P902-A901)	
Bridge 4								
Pile Cap								
BS-1040	BS - Pile cap P902-P903 (2 nos)	14	100%		22May17, BS - Pile cap P902-P903 (2 nos)			
BS-1056	BS - Pile cap P904, A905 (2 nos)	21	100%		22May17, BS - Pile cap P904, A905 (2 nos)			
Pier & Abutment								
BS-1090	BS - Pier & Abutment P902-P903 (2 nos)	14	100%		22May17, BS - Pier & Abutment P902-P903 (2 nos)			
BS-1090	BS - Pier & Abutment P904, A905 (2 nos)	14	100%		22May17, BS - Pier & Abutment P904, A905 (2 nos)			
Deck 1 (A905-P902)								
BS-1150	BS - Concrete base portion (A905-P902)	1	100%		22May17, BS - Concrete base portion (A905-P902)			
BS-1170	BS - Concrete top slab (A905-P902)	1	100%		22May17, BS - Concrete top slab (A905-P902)			
Deck 2 (P902-P903)								
BS-1200	BS - Concrete base portion (P902-P903)	1	100%		22May17, BS - Concrete base portion (P902-P903)			
BS-1240	BS - Concrete top slab (P902-P903)	1	100%		22May17, BS - Concrete top slab (P902-P903)			
Deck 3 (P903-P904)								
BS-1290	BS - Concrete base portion (P903-P904)	1	100%		22May17, BS - Concrete base portion (P903-P904)			
BS-1316	BS - Concrete top slab (P903-P904)	1	100%		22May17, BS - Concrete top slab (P903-P904)			
Deck 4 (P904-A905)								
BS-1360	BS - Concrete base portion (P904-A905)	1	100%		22May17, BS - Concrete base portion (P904-A905)			
BS-1390	BS - Concrete top slab (P904-A905)	1	100%		22May17, BS - Concrete top slab (P904-A905)			
Bridge 5								
Pile Cap								
BS-1340	BS - Pile Cap P902, A903 (2 nos)	14	100%		22May17, BS - Pile Cap P902, A903 (2 nos)			
BS-1350	BS - Pile Cap P904, P905 (2 nos)	14	100%		22May17, BS - Pile Cap P904, P905 (2 nos)			
BS-1076	BS - Pile Cap P907, A908 (2 nos)	21	100%		22May17, BS - Pile Cap P907, A908 (2 nos)			
Pier & Abutment								
BS-1090	BS - Pier & Abutment P902, A903 (2 nos)	14	100%		22May17, BS - Pier & Abutment P902, A903 (2 nos)			
BS-1100	BS - Pier & Abutment P905, P904 (2 nos)	14	100%		22May17, BS - Pier & Abutment P905, P904 (2 nos)			
BS-1110	BS - Pier & Abutment P907, A908 (2 nos)	14	100%		22May17, BS - Pier & Abutment P907, A908 (2 nos)			
Deck 1 (P901-P902)								
BS-1430	BS - Concrete base portion (P901-P902)	1	0%		22May17, BS - Concrete base portion (P901-P902)			
BS-1450	BS - Concrete top slab (P901-P902)	1	0%	12May17 A	22May17, BS - Concrete top slab (P901-P902)			
BS-1460	BS - Curing & post-tensioning (P901-P902)	14	0%	13May17 A	29May17, BS - Curing & post-tensioning (P901-P902)			
BS-1440	BS - Top slab rebar (P901-P902)	5	0%	11May17 A	11May17 A, BS - Top slab rebar (P901-P902)			
Deck 2 (P902-A903)								
BS-1500	BS - Concrete base portion (P902-A903)	1	0%		12Jun17	12Jun17, BS - Concrete base portion (P902-A903)		
BS-1520	BS - Concrete top slab (P902-A903)	1	0%		19Jun17	19Jun17, BS - Concrete top slab (P902-A903)		
BS-1530	BS - Curing & post-tensioning (P902-A903)	14	0%		22Jun17	5Jul17, BS - Curing & post-tensioning (P902-A903)		
BS-1470	BS - Fabricwork & Base F/W (P902-A903)	14	0%	18May17 A	18May17 A, BS - Fabricwork & Base F/W (P902-A903)			
BS-1480	BS - Rebar & post-tender member (P902-A903)	14	0%	19May17 A	5Jun17, BS - Rebar & post-tender member (P902-A903)			
BS-1490	BS - Side formworks (P902-A903)	5	0%		6Jun17	10Jun17, BS - Side formworks (P902-A903)		
BS-1510	BS - Top slab rebar (P902-A903)	5	0%		10Jun17	17Jun17, BS - Top slab rebar (P902-A903)		
Deck 3 (P903-P904)								
BS-1570	BS - Concrete base portion (P903-P904)	1	0%		22May17, BS - Concrete base portion (P903-P904)			
BS-1590	BS - Concrete top slab (P903-P904)	1	0%	12May17 A	22May17, BS - Concrete top slab (P903-P904)			
BS-1600	BS - Curing & post-tensioning (P903-P904)	14	0%	13May17 A	29May17, BS - Curing & post-tensioning (P903-P904)			
BS-1580	BS - Top slab rebar (P903-P904)	5	0%	11May17 A	11May17 A, BS - Top slab rebar (P903-P904)			
Deck 4 (P905-P906)								
BS-1640	BS - Concrete base portion (P905-P906)	1	100%		12Jun17	12Jun17, BS - Concrete base portion (P905-P906)		
BS-1660	BS - Concrete top slab (P905-P906)	1	100%		19Jun17	19Jun17, BS - Concrete top slab (P905-P906)		
BS-1670	BS - Curing & post-tensioning (P905-P906)	14	100%		29Jun17	6Jul17, BS - Curing & post-tensioning (P905-P906)		
BS-1610	BS - Fabricwork & Base F/W (P905-P906)	14	100%	19May17 A	18May17 A, BS - Fabricwork & Base F/W (P905-P906)			
BS-1620	BS - Rebar & post-tender member (P905-P906)	14	100%	19May17 A	5Jun17, BS - Rebar & post-tender member (P905-P906)			
BS-1630	BS - Side formworks (P905-P906)	5	100%		4Jun17	10Jun17, BS - Side formworks (P905-P906)		
BS-1650	BS - Top slab rebar (P905-P906)	5	100%		13Jun17	17Jun17, BS - Top slab rebar (P905-P906)		
Deck 5 (P907-P908)								
BS-1710	BS - Concrete base portion (P907-P908)	1	100%			19Jul17	19Jul17, BS - Concrete base portion (P907-P908)	
BS-1730	BS - Concrete top slab (P907-P908)	1	100%			26Jul17	26Jul17, BS - Concrete top slab (P907-P908)	
BS-1680	BS - Curing & post-tensioning (P907-P908)	14	100%			27Jul17	19Aug17, BS - Curing & post-tensioning (P907-P908)	
BS-1690	BS - Fabricwork & Base F/W (P907-P908)	14	100%					
BS-1690	BS - Rebar & post-tender member (P907-P908)	14	100%					
BS-1700	BS - Side formworks (P907-P908)	5	100%			13Jul17	18Jul17, BS - Side formworks (P907-P908)	
BS-1720	BS - Top slab rebar (P907-P908)	5	100%			20Jul17	25Jul17, BS - Top slab rebar (P907-P908)	

■ Remaining Level of Effort   
 ■ Actual Work   
 ■ Critical Remaining ...  
■ Actual Level of Effort   
 ■ Remaining Work   
 ◆ Milestone

Date	Revision	Checked	Approved
22/May/17	Monthly Progress 34		

HKBCF Infrastructure (Western Portion) - Monthly Progress 34 - Three Month Rolling Programme

Activity ID	Activity Name	Original Duration	% Comp.	2017			
				May	Jun	Jul	Aug
<b>Retaining Wall, Slope &amp; Earth Works</b>							
<b>Bridge 2M</b>							
02-1650	Retaining Wall RW1 (Bay 1)	21	100%	16May17 A	12Jun17, Retaining Wall RW1 (Bay 1)	7Jul17, Retaining Wall RW1 (Bay 2)	1Aug17, Retaining Wall RW1 (Bay 3)
02-1660	Retaining Wall RW1 (Bay 2)	21	100%		13Jun17	8Jul17	
02-1670	Retaining Wall RW1 (Bay 3)	21	66.67%				
<b>Bridge 4</b>							
04-3040	Retaining Wall W4-1 (Bay 1)	21	100%		13Jun17	7Jul17, Retaining Wall W4-1 (Bay 1)	
04-3030	Retaining Wall W4-1 (Bay 2)	21	100%	17May17 A	12Jun17, Retaining Wall W4-1 (Bay 2)		
04-3020	Retaining Wall W4-1 (Bay 3)	21	100%		13Jun17	7Jul17, Retaining Wall W4-1 (Bay 3)	
04-3010	Retaining Wall W4-1 (Bay 4)	21	100%	17May17 A	12Jun17, Retaining Wall W4-1 (Bay 4)		
<b>Bridge 7</b>							
07-2040	Retaining Wall W7-1 (Bay 1)	21	47.62%		15Jun17	11Jul17, Retaining Wall W7-1 (Bay 1)	
07-2030	Retaining Wall W7-1 (Bay 2)	21	100%	23May17	15Jun17, Retaining Wall W7-1 (Bay 2)		
07-2020	Retaining Wall W7-1 (Bay 3)	21	47.62%		15Jun17	11Jul17, Retaining Wall W7-1 (Bay 3)	
07-2010	Retaining Wall W7-1 (Bay 4)	21	100%	22May17	15Jun17, Retaining Wall W7-1 (Bay 4)		
07-2050	Retaining Wall W7-2 (Bay 1)	21	100%	23May17	15Jun17, Retaining Wall W7-2 (Bay 1)		
07-2070	Retaining Wall W7-2 (Bay 3)	21	100%	23May17	15Jun17, Retaining Wall W7-2 (Bay 3)		
<b>Bridge 8</b>							
08-2090	Retaining Wall W8-1 (Bay 1)	21	47.62%			21Jul17	14Aug17, Retaining Wall W8-1 (Bay 1)
08-2080	Retaining Wall W8-1 (Bay 2)	21	100%		26Jun17	23Jul17, Retaining Wall W8-1 (Bay 2)	
08-2070	Retaining Wall W8-1 (Bay 3)	21	47.62%			21Jul17	14Aug17, Retaining Wall W8-1 (Bay 3)
08-2060	Retaining Wall W8-1 (Bay 4)	21	100%		26Jun17	23Jul17, Retaining Wall W8-1 (Bay 4)	
08-2100	Retaining Wall W8-1 (Bay 5)	21	100%		17Jun17	13Jul17, Retaining Wall W8-1 (Bay 5)	
08-2110	Retaining Wall W8-1 (Bay 6)	21	100%	23May17	16Jun17, Retaining Wall W8-1 (Bay 6)		
08-2120	Retaining Wall W8-2 (Bay 1)	21	100%	23May17	17Jun17	13Jul17, Retaining Wall W8-2 (Bay 1)	
08-2130	Retaining Wall W8-2 (Bay 2)	21	100%	23May17	15Jun17, Retaining Wall W8-2 (Bay 2)		
08-2140	Retaining Wall W8-2 (Bay 3)	21	100%	23May17	15Jun17, Retaining Wall W8-2 (Bay 3)		
08-2150	Retaining Wall W8-2 (Bay 4)	21	100%	23May17	15Jun17, Retaining Wall W8-2 (Bay 4)		
08-2160	Retaining Wall W8-2 (Bay 5)	21	100%	23May17	16Jun17, Retaining Wall W8-2 (Bay 5)		
<b>Bridge 9</b>							
09-2020	Retaining Wall W9-1 (Bay 1)	21	100%		12Jun17	7Jul17	31Aug17, Retaining Wall W9-1 (Bay 1)
09-2010	Retaining Wall W9-1 (Bay 2)	21	100%		12Jun17	6Jul17, Retaining Wall W9-1 (Bay 2)	
09-2140	Retaining Wall W9-2 (Bay 1)	21	100%			19Jul17	11Aug17, Retaining Wall W9-2 (Bay 1)
09-2170	Retaining Wall W9-2 (Bay 2)	21	100%			19Jul17	11Aug17, Retaining Wall W9-2 (Bay 2)
<b>Slope &amp; Earth Works at Bridge Abutment</b>							
02-1760	Slope & earth works - C2-S3 & C2-S4 at B5	35	100%		17Jun17	6Jul17	29Jul17, Slope & earth works - C2-S3 & C2-S4 at B5
02-1700	Slope & earth works - RW1 & C2-S1	42	100%	23May17		7Jul17	29Jul17, Slope & earth works - RW1 & C2-S1
02-1770	Slope & earth works - W2-C3-S5 & C2-S6	56	57.5%				29Jul17, Slope & earth works - W2-C3-S5 & C2-S6
02-1780	Slope & earth works - W4-1 & C2-S7	42	100%				11Aug17
02-1800	Slope & earth works - W5-1	21	100%				12Aug17
02-1910	Slope & earth works - W5-2	35	80%				12Aug17
02-1890	Slope & earth works - W6-1	28	100%				5Aug17
02-1860	Slope & earth works - W7-1	35	28.57%		16Jun17	12Jul17	21Aug17, Slope & earth works - W7-1
02-1790	Slope & earth works - W7-2	35	100%				15Aug17
02-1870	Slope & earth works - W8-1	35	28.57%		17Jun17	28Jul17	28Jul17, Slope & earth works - W8-1
02-1880	Slope & earth works - W8-2	35	100%				17Jun17
<b>Parapet &amp; Barrier</b>							
<b>Bridge 3</b>							
03-0700	B3 - Parapet Side Wall (163m)	26	100%			21Jul17	B3 - Parapet Side Wall (163m)
<b>Bridge 2</b>							
02-1810	B2a - Barrier Wall (200m)	35	0%			18Jul17	24Aug17, B2a - Barrier Wall (200m)
02-1800	B2a - Parapet Side Wall (200m)	33	0%			18Jul17	24Aug17, B2a - Parapet Side Wall (200m)
02-1830	B2b - Barrier Wall (205m)	45	100%	24May17		17Jul17	B2b - Barrier Wall (205m)
02-1820	B2b - Parapet Side Wall (205m)	45	100%	24May17		17Jul17	B2b - Parapet Side Wall (205m)
02-1850	B2c - Barrier Wall (140m)	25	100%		23May17		B2c - Barrier Wall (140m)
02-1840	B2c - Parapet Side Wall (140m)	25	100%		23May17		B2c - Parapet Side Wall (140m)
<b>Bridge 4</b>							
04-3050	B4 - Parapet Side Wall (278m)	39	100%	20May17 A		7Jul17	B4 - Parapet Side Wall (278m)
<b>Bridge 7</b>							
07-2050	B7 - Parapet Side Wall (248m)	42	48.48%			6Jul17	21Aug17, B7 - Parapet Side Wall (248m)
<b>Bridge 8</b>							
08-2130	B8 - Parapet Side Wall (233m)	40	72.5%			21Jul17	26Jul17
08-2180	B8 - Parapet Side Wall (209m)	50	66%				26Jul17
<b>Storm &amp; Sewer Drainage Works</b>							
<b>Storm Drain (below +1.2m) (29m)</b>							
D1-0610	Box C3.2 - M4E.5 (8m) 1250mm	10	100%		26May17		Box C3.2 - M4E.5 (8m) 1250mm
D1-0630	M4E.3 - M3E.1 (25m) 300mm	13	100%		24May17		M4E.3 - M3E.1 (25m) 300mm
D1-0640	M4E.3 - M3E.1 (40m) 400mm	25	100%		26May17		M4E.3 - M3E.1 (40m) 400mm
D1-0620	M4E.5 - M3E.3 (25m) 900mm	13	100%		25May17		M4E.5 - M3E.3 (25m) 900mm
<b>Storm - east of B1</b>							
D1-0660	M4E.4 - M4E.4 (25m) 600mm	12	100%		19Jun17		M4E.4 - M4E.4 (25m) 600mm
D1-0655	M4E.4 - M4E.3 (37m) 600mm	19	100%		13Jun17		M4E.4 - M4E.3 (37m) 600mm
D1-0650	M4E.5 - M4E.4 (38m) 750mm	19	100%		13Jun17		M4E.5 - M4E.4 (38m) 750mm

█ Remaining Level of Effort   
 █ Actual Work   
 █ Critical Remaining ...  
█ Actual Level of Effort   
 █ Remaining Work   
 ◆ Milestone

Date	Revision	Checked	Approved
22/May/17	Monthly Progress 34		



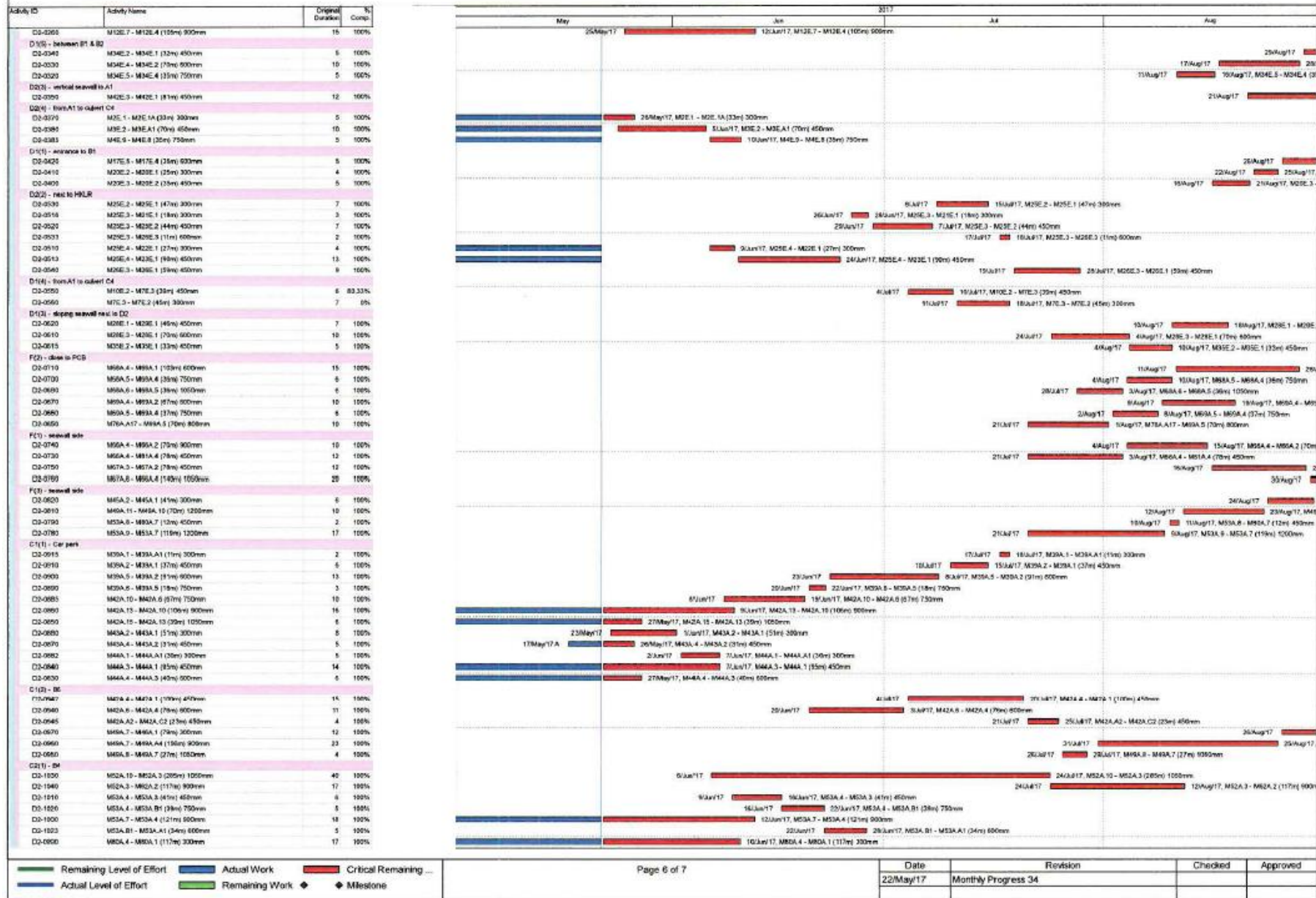
### HKBCF Infrastructure (Western Portion) - Monthly Progress 34 - Three Month Rolling Programme

Activity ID	Activity Name	Original Duration	% Comp.	2017			
				May	Jun	Jul	Aug
<b>D(1) - between B1 &amp; B2</b>							
D1-0075	Box C3.1 - M3E.8 (2.85m) 1200mm	10	100%	21/May/17, Box C3.1 - M3E.8 (2.85m) 1200mm			
D1-0085	M3E.2 - M3E.1 (40m) 450mm	20	100%	25/May/17, M3E.2 - M3E.1 (40m) 450mm			
D1-0110	M3E.5 - M3E.5 (34m) 750mm	17	100%	15/Jun/17, M3E.5 - M3E.5 (34m) 750mm			
D1-0100	M3E.7 - M3E.6 (33m) 900mm	17	100%	19/Jun/17, M3E.7 - M3E.6 (33m) 900mm			
D1-0090	M3E.8 - M3E.2 (42m) 600mm	21	100%	15/Jun/17, M3E.8 - M3E.2 (42m) 600mm			
D1-0095	M3E.8 - M3E.7 (27m) 1050mm	14	100%	7/Jun/17, M3E.8 - M3E.7 (27m) 1050mm			
<b>D(2) - to column C4</b>							
D1-0120	Box C4.1 - M4E.9 (48m) 900mm	24	100%	19/Jun/17, Box C4.1 - M4E.9 (48m) 900mm			
D1-0140	M4E.10 - M3E.2 (20m) 450mm	10	100%	25/Jun/17, M4E.10 - M3E.2 (20m) 450mm			
D1-0130	M4E.11 - M2E.1 (19m) 450mm	10	100%	20/Jun/17, M4E.11 - M2E.1 (19m) 450mm			
<b>D(3) - site entrance</b>							
D1-0160	Box C1.1-M2E.8 (8m) 1050mm	10	100%	20/Jun/17, Box C1.1-M2E.8 (8m) 1050mm			
D1-0240	M18E.4-M18E.3 (25m) 600mm	13	100%			10/Aug/17	15/Aug/17, M18E.4-M18E.3 (25m)
D1-0150	M20E.4-M20E.3 (16m) 600mm	8	100%	31/May/17, M20E.4-M20E.3 (16m) 600mm			
D1-0210	M20E.5-M18E.3 (56m) 450mm	28	100%			10/Aug/17, M20E.5-M18E.3 (56m) 450mm	
D1-0180	M20E.5-M17E.5 (58m) 600mm	29	100%			24/Jun/17, M20E.5-M17E.5 (58m) 600mm	
D1-0230	M20E.6-M18E.4 (26m) 750mm	18	100%			10/Jun/17	31/Aug/17, M20E.6-M18E.4 (26m) 750mm
D1-0170	M20E.6-M20E.4 (26m) 750mm	13	100%	5/Jun/17, M20E.6-M20E.4 (26m) 750mm			
<b>D(3) - over to HKQR</b>							
D1-0250	Box C1.2-M2E.5A (18m) 900mm	10	100%	20/Jun/17, Box C1.2-M2E.5A (18m) 900mm			
D1-0260	M2E.5-M2E.4 (12m) 450mm	6	100%	27/May/17, M2E.5-M2E.4 (12m) 450mm			
D1-0225	M2E.5-M2E.3 (18m) 600mm	9	100%	9/Jun/17, M2E.5-M2E.3 (18m) 600mm			
D1-0270	M2E.5-M2E.5 (30m) 600mm	18	100%	10/Jun/17, M2E.5-M2E.5 (30m) 600mm			
D1-0280	M2E.5-M2E.5A (18m) 900mm	7	100%	29/May/17, M2E.5-M2E.5A (18m) 900mm			
D1-0285	M2E.5A-M2E.5 (17m) 750mm	9	100%	9/Jun/17, M2E.5A-M2E.5 (17m) 750mm			
<b>D(4) - Under B2 &amp; to column C4</b>							
D1-0350	Box C4.2-M1E.17 (18m) 1350mm	18	100%	12/Jun/17, Box C4.2-M1E.17 (18m) 1350mm			
D1-0360	M1E.2 - M1E.1 (26m) 300mm	13	100%	28/Jun/17			15/Jun/17, M1E.2 - M1E.1 (26m) 300mm
D1-0355	M1E.17 - M1E.15 (52m) 1200mm	23	100%			26/Jun/17, M1E.17 - M1E.15 (52m) 1200mm	
D1-0370	M1E.17 - M1E.1 (26m) 300mm	14	100%	6/Jun/17			21/Jun/17, M1E.17 - M1E.1 (26m) 300mm
D1-0365	M1E.18 - M1E.2 (8m) 600mm	5	100%	22/Jun/17			27/Jun/17, M1E.18 - M1E.2 (8m) 600mm
<b>D(4) - Under B2</b>							
D1-0410	M3E.2 - M3E.1 (33m) 450mm	17	100%			4/Jun/17	24/Jun/17, M3E.2 - M3E.1 (33m) 450mm
D1-0405	M3E.3 - M3E.3 (51m) 750mm	26	100%			4/Jun/17, M3E.3 - M3E.3 (51m) 750mm	
<b>D(4) - Under B2</b>							
D1-0450	M3E.3 - M3E.2 (49m) 450mm	26	100%			11/Jun/17	28/Jun/17
D1-0440	M3E.4 - M3E.3 (42m) 600mm	21	100%			29/Jun/17	29/Jun/17, M3E.4 - M3E.3 (42m) 600mm
D1-0435	M3E.7 - M3E.4 (38m) 750mm	15	100%			11/Jun/17	29/Jun/17, M3E.7 - M3E.4 (38m) 750mm
<b>F(1) - Sewer/B Box</b>							
D1-0530	M7A.19 - M6A.5 (34m) 1050mm	17	100%			20/Jun/17, M7A.19 - M6A.5 (34m) 1050mm	
D1-0520	M7A.20 - M7A.17 (17m) 900mm	6	100%	1/Jun/17, M7A.20 - M7A.17 (17m) 900mm			
D1-0510	M7A.21 - M6A.11 (29m) 1200mm	29	100%	27/May/17, M7A.21 - M6A.11 (29m) 1200mm			
D1-0505	M7A.22 - M6A.9 (12m) 600mm	6	100%	27/May/17, M7A.22 - M6A.9 (12m) 600mm			
D1-0495	M7A.23 - M5A.9 (44m) 1200mm	22	100%	25/May/17, M7A.23 - M5A.9 (44m) 1200mm			
D1-0525	M7A.A23 - M5A.10 (10m) 1050mm	5	100%	26/May/17, M7A.A23 - M5A.10 (10m) 1050mm			
<b>F(1) - from car park</b>							
D1-0585	M7A.17 - M6A.4 (23m) 600mm	10	100%			20/Jun/17, M7A.17 - M6A.4 (23m) 600mm	
D1-0578	M7A.18 - M6A.15 (38m) 1200mm	16	100%			5/Jun/17, M7A.18 - M6A.15 (38m) 1200mm	
D1-0555	M7A.A18 - M4A.4 (37m) 600mm	19	100%			21/Jun/17, M7A.A18 - M4A.4 (37m) 600mm	
D1-0545	M7A.A19 - M4A.2 (29m) 450mm	20	100%	14/Jun/17, M7A.A19 - M4A.2 (29m) 450mm			
<b>Storm Drain about +1.3m (7days)</b>							
<b>A(1) - sewer/road to B2</b>							
D0-0020	M4E.3 - M4E.1 (71m) 600mm	11	100%			3/Jun/17, M4E.3 - M4E.1 (71m) 600mm	
D0-0025	M4E.7 - M1E.1 (29m) 300mm	6	100%	23/May/17, M4E.7 - M1E.1 (29m) 300mm			
D0-0010	M4E.8 - M4E.3 (193m) 750mm	29	100%			21/Jun/17, M4E.8 - M4E.3 (193m) 750mm	
<b>B(1) - CLP to PCB</b>							
D0-0080	M1E.2 - M1E.1 (41m) 450mm	6	100%	27/May/17, M1E.2 - M1E.1 (41m) 450mm			
D0-0070	M1E.3 - M1E.2 (25m) 600mm	5	100%	26/May/17, M1E.3 - M1E.2 (25m) 600mm			
D0-0060	M1C.2 - M1C.1 (25m) 450mm	5	100%	29/May/17, M1C.2 - M1C.1 (25m) 450mm			
<b>A(1) - M7A/B2</b>							
D0-0170	M6A.1 - M6A.2 (27m) 900mm	6	100%			24/Jun/17	29/Jun/17, M6A.1 - M6A.2 (27m) 900mm
D0-0120	M6A.B1 - M6A.C1 (25m) 600mm	5	100%	14/Jun/17, M6A.B1 - M6A.C1 (25m) 600mm			
D0-0130	M6A.C1 - M6A.1 (60m) 750mm	9	100%			25/Jun/17, M6A.C1 - M6A.1 (60m) 750mm	
D0-0110	M6A.E1 - M6A.B1 (60m) 450mm	10	100%	3/Jun/17, M6A.E1 - M6A.B1 (60m) 450mm			
D0-0150	M7A.1 - M7A.2 (25m) 450mm	5	100%			11/Jun/17, M7A.1 - M7A.2 (25m) 450mm	
D0-0160	M7A.3 - M7A.4 (70m) 600mm	10	100%			13/Jun/17, M7A.3 - M7A.4 (70m) 600mm	
D0-0180	M7A.4 - M7A.6 (69m) 750mm	10	100%			3/Jun/17	10/Aug/17, M7A.4 - M7A.6 (69m) 750mm
D0-0140	M7A.A1 - M7A.1 (25m) 300mm	4	100%			5/Jun/17, M7A.A1 - M7A.1 (25m) 300mm	
D0-0100	M8A.1 - M8A.4 (130m) 300mm	19	100%	19/Jun/17, M8A.1 - M8A.4 (130m) 300mm			
<b>A(2) - under B3</b>							
D0-0180	M1C.1 - M1C.1 (18m) 600mm	4	100%			11/Aug/17	15/Aug/17, M1C.1 - M1C.1 (18m)
D0-0200	M4C.C1 - M4C.A1 (28m) 450mm	20	100%			16/Aug/17	
<b>A(2) - under B3</b>							
D0-0250	M1E.11 - M1E.7 (148m) 1050mm	21	100%	15/Jun/17, M1E.11 - M1E.7 (148m) 1050mm			
D0-0240	M1E.15 - M1E.11 (141m) 1200mm	21	100%	15/Jun/17, M1E.15 - M1E.11 (141m) 1200mm			

█ Remaining Level of Effort   
 █ Actual Work   
 █ Critical Remaining ...  
█ Actual Level of Effort   
 █ Remaining Work   
 ◆ Milestone

Date	Revision	Checked	Approved
22/May/17	Monthly Progress 34		

### HKBCF Infrastructure (Western Portion) - Monthly Progress 34 - Three Month Rolling Programme





### HKBCF Infrastructure (Western Portion) - Monthly Progress 34 - Three Month Rolling Programme

Activity ID	Activity Name	Original Duration	% Comp.	2017			
				May	Jun	Jul	Aug
02-0980	M80A.7 - M80A.4 (112m) 450mm	87	100%		10 Jun 17		
<b>C(2) - 08</b>							
02-1060	M47A.10 - M47A.4 (30m) 450mm	5	100%				24 Aug 17
02-1070	M47A.4 - M47A.A4 (35m) 300mm	6	100%				30 Aug 17
02-1080	M49A.8 - M47A.10 (14m) 750mm	2	100%				12 Aug 17
02-1083	M49A.8 - M49A.10 (35m) 1050mm	8	100%				15 Aug 17
<b>E(1) - car park</b>							
02-1130	M30A.9 - M30A.3 (112m) 600mm	16	100%				15 Aug 17
02-1130	M30A.9 - M30A.7 (71m) 920mm	11	100%				14 Aug 17
02-1119	M30A.A4 - M30A.9 (21m) 1200mm	3	100%				24 Aug 17
02-1121	M30A.6 - M30A.5 (17m) 750mm	3	100%				25 Aug 17
02-1122	M42A.7 - M42A.1 (40m) 300mm	6	100%				19 Aug 17
<b>C(3) - 06 &amp; 07</b>							
02-1190	M33A.3 - M33A.1 (50m) 450mm	6	100%				21 Aug 17
02-1200	M33A.4 - M33A.3 (35m) 450mm	6	0%				29 Aug 17
02-1210	M33A.5 - M33A.4 (35m) 600mm	5	0%				17 Aug 17
02-1200	M33A.7 - M33A.5 (70m) 750mm	10	20%				11 Aug 17
02-1300	M39A.7 - M39A.6 (27m) 300mm	4	0%				31 Aug 17
02-1310	M39A.8 - M39A.9 (35m) 450mm	5	0%				13 Aug 17
<b>Sewer drain system</b>							
<b>CLP sub-station</b>							
03-1000	FMH1510-FM1507 (63m dia 300mm)	13	100%				23 Aug 17
<b>Sewer Hoist Man</b>							
<b>From Portion H to Portion G</b>							
WM-0019	Rising main CAD (CH4-CH100) - Installation	16	100%				18 Aug 17
<b>Branch Collector drain, Gully &amp; U-channel</b>							
<b>Portion A &amp; B</b>							
DA-0225	Branch, Gully, U-channel & C drain - portion A	60	100%	2 Jun 17			11 Aug 17
<b>Waterman</b>							
<b>Fresh Waterman</b>							
<b>Portion D2 (Site entrance)</b>							
WM-1100	Fresh main J DN400 (CH5-CH230) - Installation	17	100%				16 Aug 17
<b>Portion A</b>							
WM-1240	Fresh main H DN300 (CH700-CH1200) - Installation	42	100%	22 May 17			11 Aug 17
WM-1260	Fresh main J DN400 (CH450-CH800) - Installation	34	100%	22 May 17			31 Aug 17
WM-1280	Fresh main K DN400 (CH550-CH815) - Installation	15	100%	22 May 17			8 Aug 17
WM-1300	Fresh main P DN250 (CH217-CH35) - Installation	14	100%	22 May 17			31 Aug 17
<b>Utilities</b>							
<b>Utilities &amp; Ducting</b>							
<b>Portion D2 (Site entrance)</b>							
UT-1110	Tel Duct cont common drain pit	28	100%				10 Aug 17
UT-1240	Tel Duct for Retaining wall at Bridge 2	55	100%				11 Aug 17
UT-1130	Tel Duct from Site Entrance to Portion D1	120	90%	10 May 17			7 Aug 17
<b>Portion A (Below CLP sub-station)</b>							
UT-1250	Tel Duct for Abutment A301 at Bridge 3	28	100%				17 Aug 17
UT-1100	Tel Duct from Site Entrance to Portion A	50	73.33%				15 Aug 17
<b>Road Works</b>							
<b>Strenuous Works</b>							
<b>Bridge Area (Waterproofing &amp; base course)</b>							
RW-1912	SOL200 (CH1635-CH1696) Bridge 2c North	32	0%				18 Aug 17
RW-1914	SOL200 (CH1635-CH1696) Bridge 2c North	16	100%	24 May 17			23 Aug 17
RW-1922	SOL200R (CH1635-CH1696) Bridge 2c South	32	0%				3 Aug 17
RW-1924	SOL200R (CH1635-CH1696) Bridge 2c South	16	100%				13 Aug 17
RW-1936	SOL315 (CH1377-CH1423) Bridge 7	16	0%				23 Aug 17
<b>Road Furniture &amp; Fit out</b>							
<b>Probers H-Pile &amp; Cap for Sign Gantry</b>							
SW-178	Cap - GT122 (2 no.)	14	92.86%				17 Aug 17
<b>Road Lighting Design &amp; Subsystem</b>							
RW-2030	Order & delivery of lighting material for remaining area	120	0%				4 Aug 17
<b>Lighting &amp; road furniture for Portion H</b>							
RW-1950	cable duct to Bridge 1a	21	100%	10 May 17			30 May 17
RW-1960	Wearing & Friction Course for Bridge 1a	21	100%				29 Jun 17
<b>Lighting &amp; Power</b>							
RW-1980	Emergation of power by CLP	0	0%				
<b>Landscape</b>							
<b>Build &amp; design of Irrigation system</b>							
RW-2040	Order & delivery of Pipe material to site	120	0%	22 May 17			

█ Remaining Level of Effort   
 █ Actual Work   
 █ Critical Remaining ...   
 █ Actual Level of Effort   
 █ Remaining Work   
 ◆ Milestone

Date	Revision	Checked	Approved
22/May/17	Monthly Progress 34		