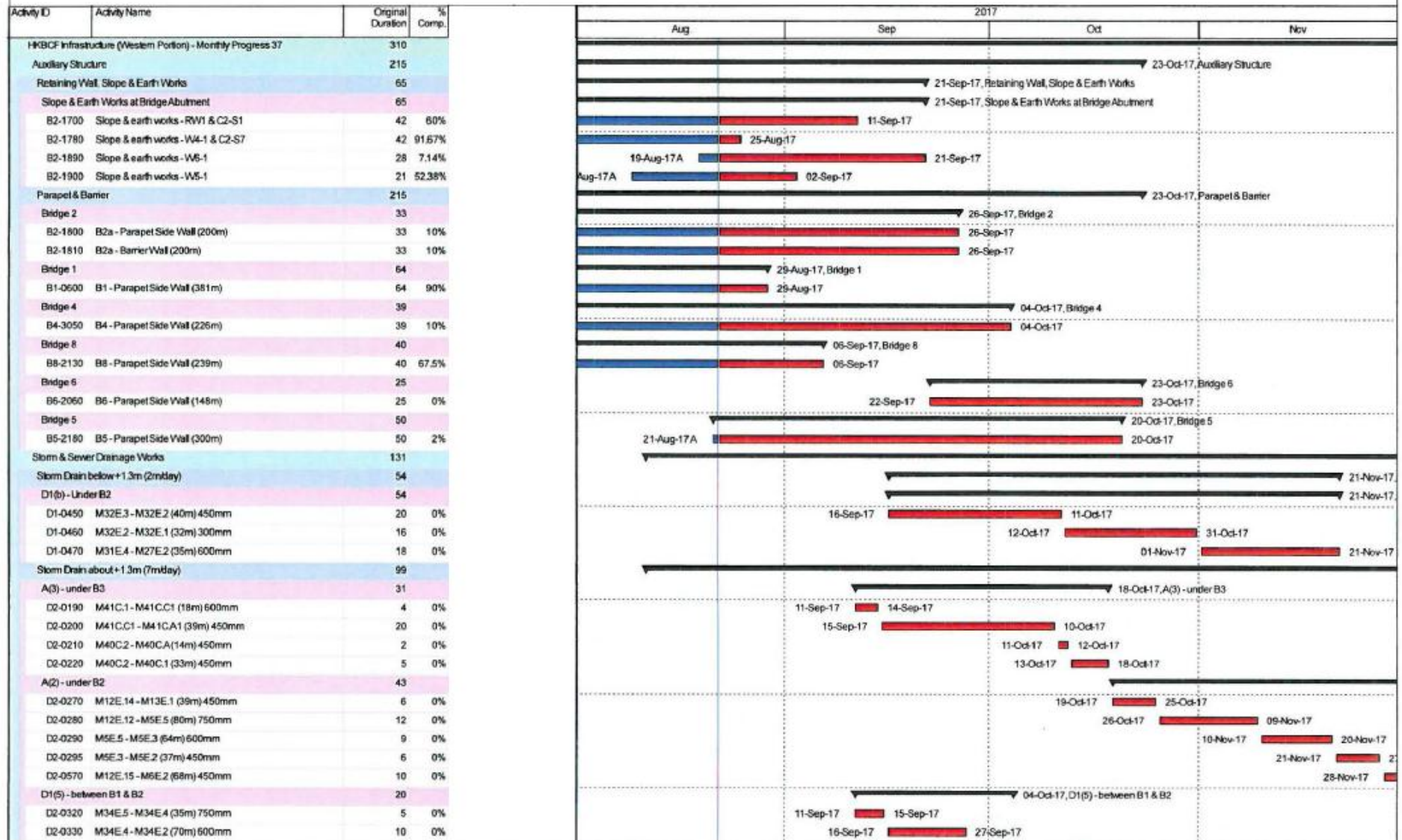


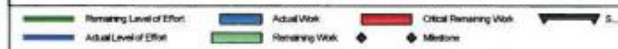
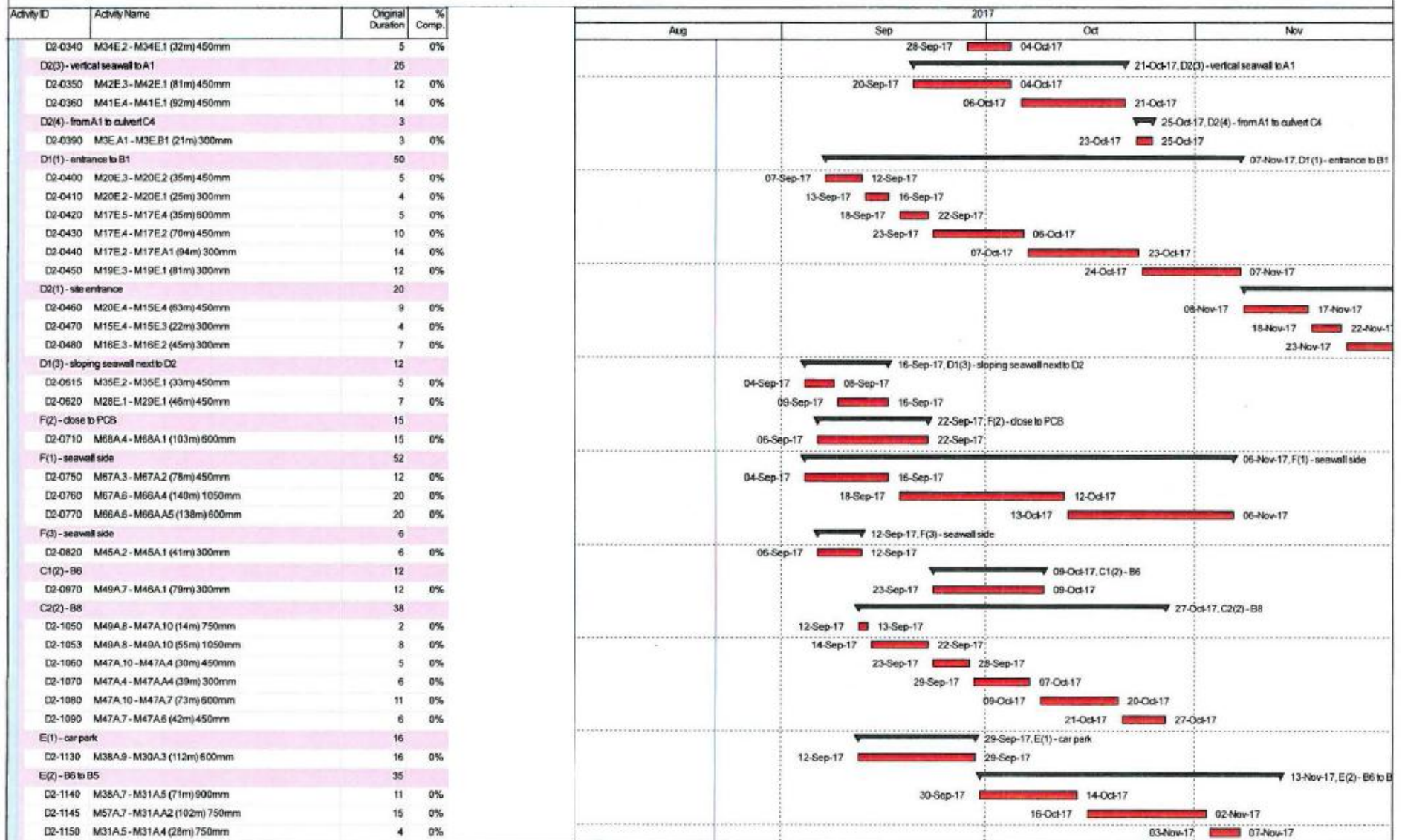
HKBCF Infrastructure (Western Portion) - Monthly Progress 37 - Three Month Rolling Programme



█ Remaining Level of Effort   
 █ Actual Work   
 █ Critical Remaining Work   
  S...  
█ Actual Level of Effort   
 █ Remaining Work   
 ◆ Milestone

Date	Revision	Checked	Approved
22-Aug-17	Three Month Rolling Programme		

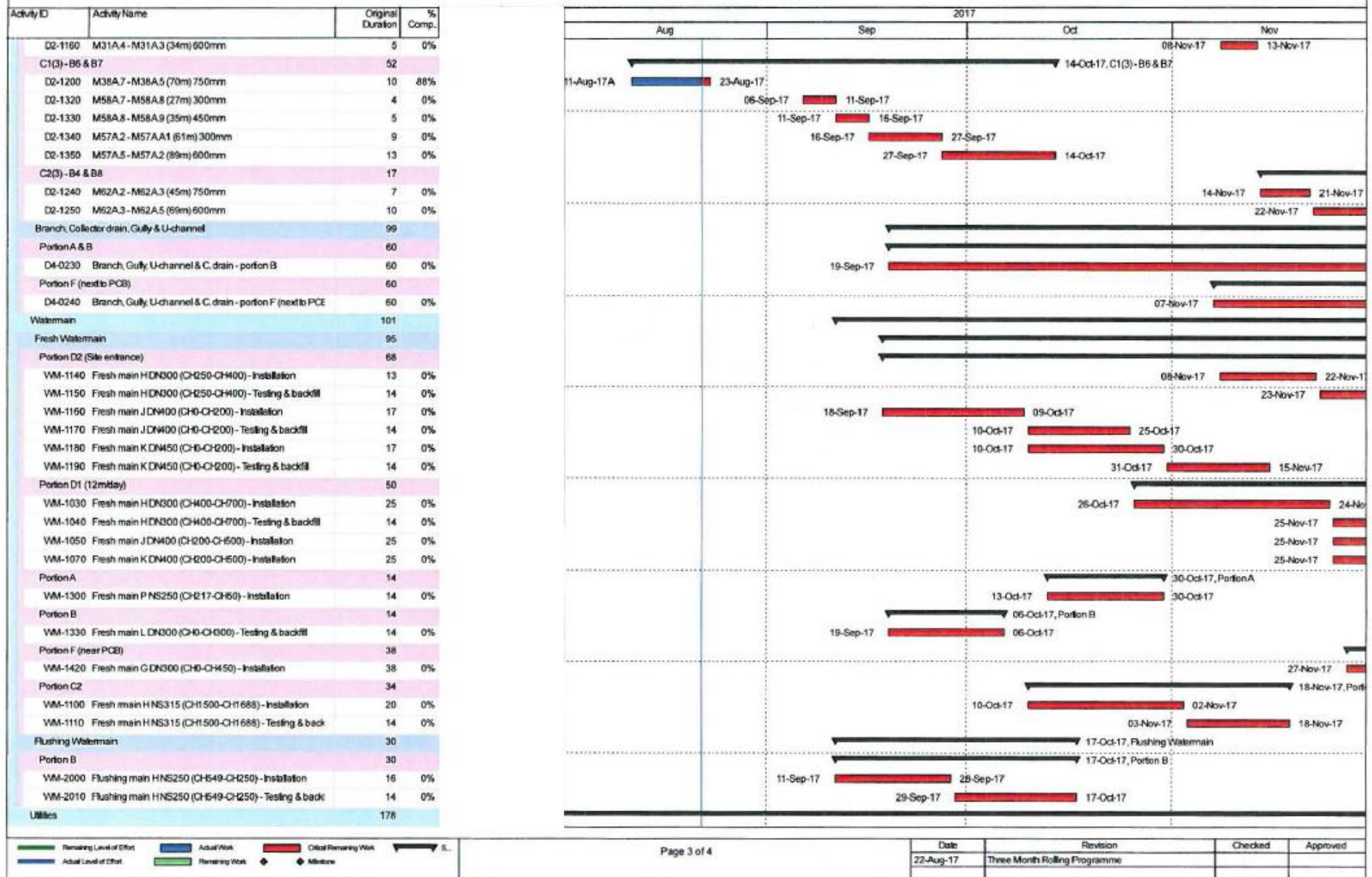
HKBCF Infrastructure (Western Portion) - Monthly Progress 37 - Three Month Rolling Programme



Date	Revision	Checked	Approved
22-Aug-17	Three Month Rolling Programme		



HKBCF Infrastructure (Western Portion) - Monthly Progress 37 - Three Month Rolling Programme



HKBCF Infrastructure (Western Portion) - Monthly Progress 37 - Three Month Rolling Programme

Activity ID	Activity Name	Original Duration	% Comp.	2017			
				Aug	Sep	Oct	Nov
CLP Cable trench & duct							
Portion B1 & F (PCB)							
UT-1050	CLP trench & Duct - sub-station to PCB	90	0%				
Utilities & Ducting							
Portion A (before CLP sub-station)							
UT-1100	Tel Duct from Site Entrance to Portion A	60	62.89%				
Portion B1 & F (PCB)							
UT-1090	Tel Duct from portion D to Sub-station	120	0%				
Cable Duct (TCSS, ELV & LV)							
Portion A & B							
UT-1140	Cable duct for TCSS, ELV, LV & other department (A&B)	45	0%				
UT-1230	Cable duct for TCSS, ELV, LV & other department (H/M201)	21	0%				
Road Works							
Bituminous Works							
Bridge Area (Waterproofing & base course)							
RW-1000	SOL101 (CH1359-CH1735) Bridge 1	32	0%				
RW-1010	SOL200 (CH16353-CH16963) Bridge 2a North	21	0%				
RW-1012	SOL200 (CH16353-CH16963) Bridge 2b North	32	0%				
RW-1014	SOL200 (CH16353-CH16963) Bridge 2c North	16	68.75%				
RW-1020	SOL200R (CH16353-CH16963) Bridge 2a South	21	0%				
RW-1022	SOL200R (CH16353-CH16963) Bridge 2b South	32	0%				
RW-1024	SOL200R (CH16353-CH16963) Bridge 2c South	16	68.75%				
RW-1030	SOL103 (CH286-CH453) Bridge 3	10	0%				
RW-1080	SOL206 (CH616-CH674) Bridge 6	14	0%				
RW-1090	SOL311 (CH1377-CH1623) Bridge 7	18	0%				
Landscape							
Sublet & design of Irrigation system							
RW-2040	Order & delivery of Pipe material to site	120	76.67%				

█ Remaining Level of Effort   
 █ Actual Work   
 █ Critical Remaining Work   
 ▼ S...  
█ Actual Level of Effort   
 █ Remaining Work   
 ◆ Milestone

Date	Revision	Checked	Approved
22-Aug-17	Three Month Rolling Programme		