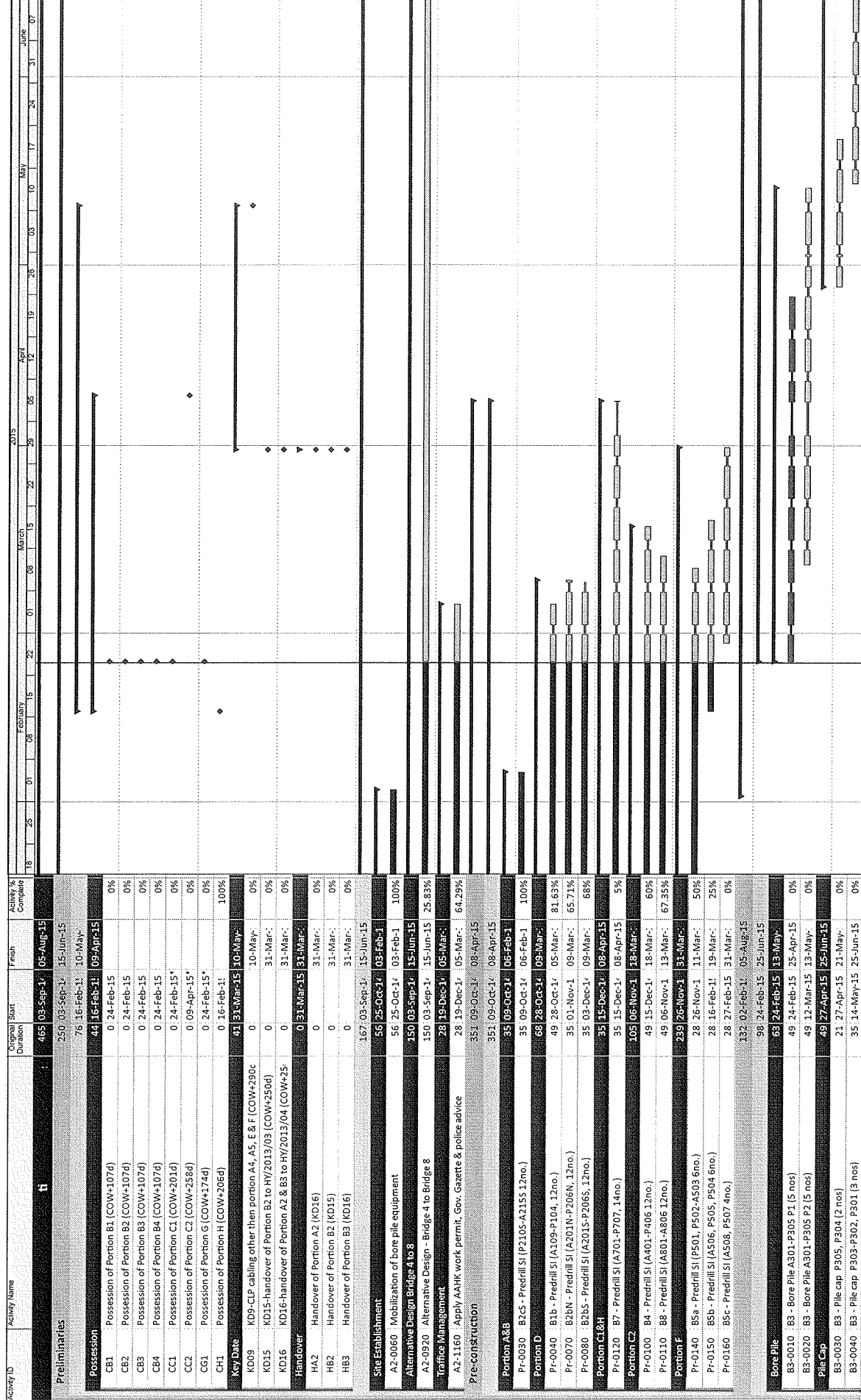


HKBCF Infrastructure (Western Portion) - Monthly Progress 07 - Three Month Rolling Programme

WP01-MRP07



HKBCF Infrastructure (Western Portion) - Monthly Progress 07 - Three Month Rolling Programme

WP01-MRP07

Activity ID	Activity Name	Original Duration	Start	Finish	Activity % Completed	February 2015																					
						18	25	01	08	15	22	01	08	15	22	29	05	12	19	26	03	10	17	24	31	07	
Pile & Abutment																											
B3-0050	B3 - Pile & Abutment P305, P304 (2 nos)	14	22-Mar-15	08-Jun-15	0%																						
Bore Pile																											
B2-0010	B2N - Bore Pile P213-A215 (6 nos)	119	10-Mar-15	04-Aug-15	0%																						
B2-0020	B2N - Bore Pile P210-P212 (6 nos)	63	10-Mar-15	28-May-15	0%																						
B2-0030	B2N - Bore Pile P209-P207 (6 nos)	63	16-Apr-15	02-Jul-15	0%																						
Bore Pile																											
B2-1000	B2S - Bore Pile P213-A215 (6 nos)	119	24-Feb-15	21-Jul-15	0%																						
B2-1010	B2S - Bore Pile P210-P212 (6 nos)	63	28-Mar-15	16-Jun-15	0%																						
B2-1020	B2S - Bore Pile P209-P207 (6 nos)	63	06-May-15	21-Jul-15	0%																						
Pile Cap																											
B2-1050	B2S - Pile Cap P213-A215 (3 nos)	21	14-Mar-15	08-Jun-15	0%																						
Bore Pile																											
B1-0010	B1 - Bore Pile P105-P107 (6 nos)	103	02-Feb-15	02-Jul-15	0%																						
B1-0020	B1 - Bore Pile P108-A109, P104 (6 nos)	63	10-Mar-15	28-May-15	0%																						
B1-0030	B1 - Bore Pile P103, A101 (6 nos)	63	16-Apr-15	02-Jul-15	0%																						
Bore Pile																											
B4-0010	B4 - Bore Pile P405, P406 (4 nos)	91	09-Apr-15	28-Jul-15	0%																						
B4-0020	B4 - Bore Pile P403, P404 (4 nos)	63	09-Apr-15	24-Jun-15	0%																						
Bore Pile																											
B7-1000	B7 - Bore Pile P703-P705 (6 nos)	98	09-Apr-15	05-Aug-15	0%																						
B7-1010	B7 - Bore Pile P706-A707 (4 nos)	63	09-Apr-15	24-Jun-15	0%																						
Bore Pile																											
B8-1000	B8 - Bore Pile P803, P804 (4 nos)	98	09-Apr-15	05-Aug-15	0%																						
B8-1010	B8 - Bore Pile P805, A806 (4 nos)	63	12-May-15	05-Aug-15	0%																						
D1a1 (next to culvert E3)																											
D1-0010	Box C3.2 - M3E2.5 (8m) 1050mm	98	24-Feb-15	25-Jun-15	0%																						
D1-0020	M3E2.5 - M3E2.3 (25m) 900mm	13	07-Mar-15	21-Mar-15	0%																						
D1-0030	M3E2.3 - M3E1.1 (25m) 300mm	13	23-Mar-15	10-Apr-15	0%																						
D1-0040	M3E1.1 (49m) 450mm	25	23-Mar-15	24-Apr-15	0%																						
D1-0050	M3E2.5 - M3E2.4 (38m) 750mm	19	25-Apr-15	18-May-15	0%																						
D1-0060	M4E1.4 - M4E2.3 (62m) 600mm	31	19-May-15	25-Jun-15	0%																						
D1b1 (next to culvert E3)																											
D1-0070	Box C3.1 - M3E1.8 (2.65m) 1200mm	79	24-Feb-15	02-Jun-15	0%																						
D1-0080	M3E1.8 - M3E1.2 (42m) 600mm	21	07-Mar-15	31-Mar-15	0%																						
D1-0090	M3E1.2 - M3E1.7 (27m) 1050mm	14	01-Apr-15	21-Apr-15	0%																						
D1-0100	M3E1.7 - M3E1.6 (33m) 900mm	17	22-Apr-15	12-May-15	0%																						
D1-0110	M3E1.6 - M3E1.5 (34m) 750mm	17	13-May-15	02-Jun-15	0%																						
D2c (next to Bordon A)																											
D1-0120	Box C4.1 - M4E1.9 (31m) 900mm	44	24-Feb-15	20-Apr-15	0%																						
D1-0130	M4E1.1 - M2E1.1 (19m) 450mm	10	14-Mar-15	25-Mar-15	0%																						
D1-0140	M4E1.0 - M3E2 (20m) 450mm	10	26-Mar-15	10-Apr-15	0%																						
D1-0150	M4E1.9 - M4E1.8 (6m) 750mm	8	11-Apr-15	20-Apr-15	0%																						
D2a (Bike entrance)																											
D1-0160	Box C1.1-M2OE.6 (6m) 1050mm	77	24-Feb-15	30-May-15	0%																						

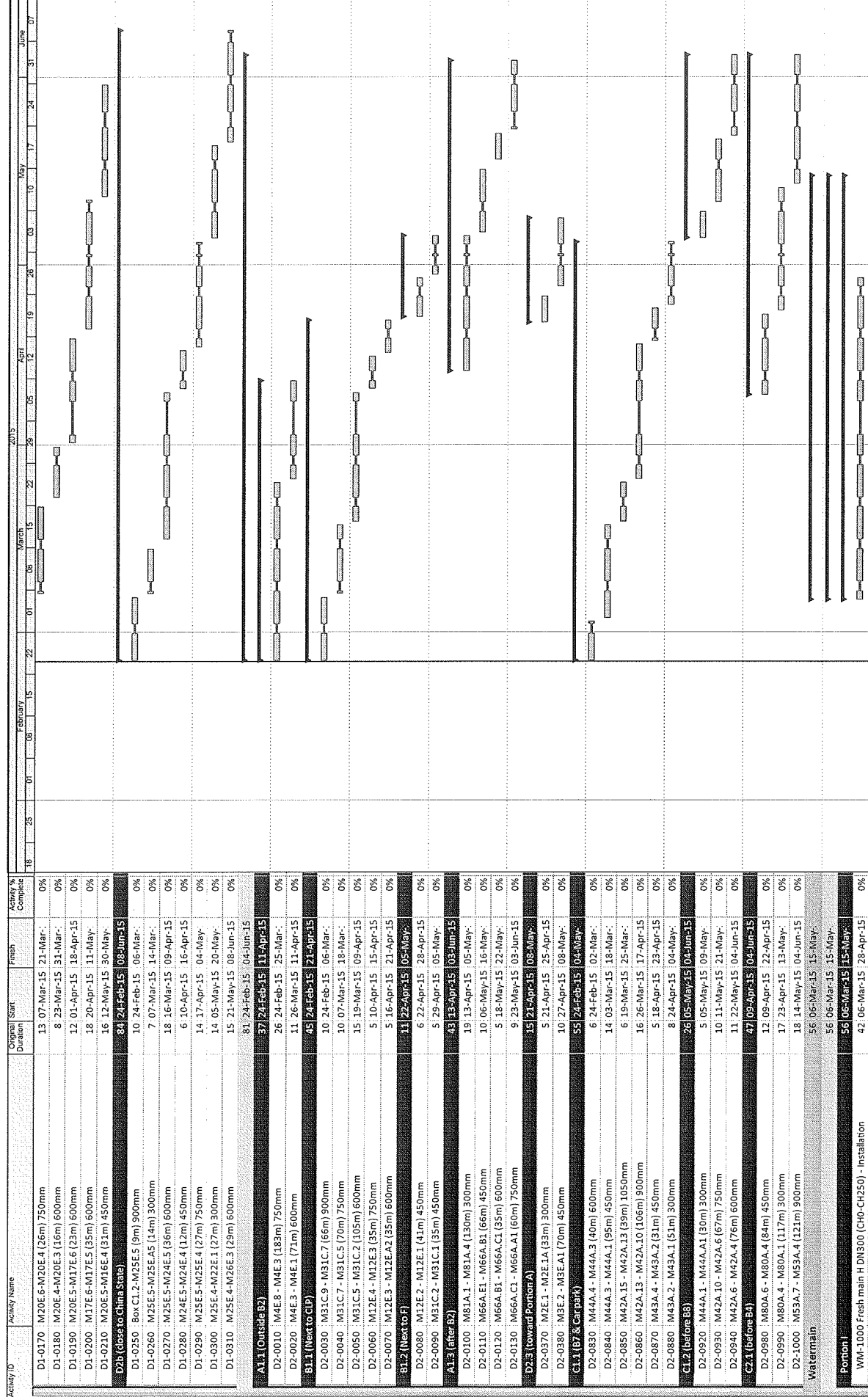
Remaining Level of Effort
 Actual Level of Effort
 Critical Remaining Work
 Milestone

Summary

Date	Revision	Checked	Approved
24-Feb-15	monthly Report No. 7		

HKBCF Infrastructure (Western Portion) - Monthly Progress 07 - Three Month Rolling Programme

WFO1-MRP07



Date	Revision	Checked	Approved
24-Feb-15	monthly Report No. 7		

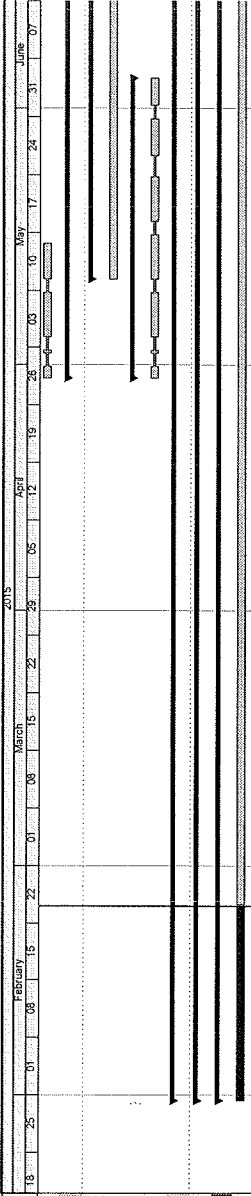
Summary

- Remaining Level of Effort
- Actual Level of Effort
- Critical Remaining Work
- Actual Work
- Milestone

HKBCF Infrastructure (Western Portion) - Monthly Progress 07 - Three Month Rolling Programme

WP01-MRP07

Activity ID	Activity Name	Original Start	Finish	Activity % Complete
WM-1010	Fresh main H DN300 (CH0-CH250) - Testing & backfill	14-29-Apr-15	15-May-15	0%
Utilities				
UT-1000	CLP trench bridge 2 to Sub-station	57-29-Apr-15	24-Jun-15	0%
UT-1170	Cable duct for TCSS & other department (1)	45-11-May-15	24-Jun-15	0%
		30-29-Apr-15	04-Jun-15	0%
		30-29-Apr-15	04-Jun-15	0%
		144-31-Jan-15	03-Jul-15	
		144-31-Jan-15	03-Jul-15	
		144-31-Jan-15	03-Jul-15	10%
		144-31-Jan-15	03-Jul-15	10%



Remaining Level of Effort
 Actual Level of Effort
 Actual Work
 Remaining Work
 Critical Remaining Work
 Milestone

Summary

Date	Revision	Checked	Approved
24-Feb-15	monthly Report No. 7		