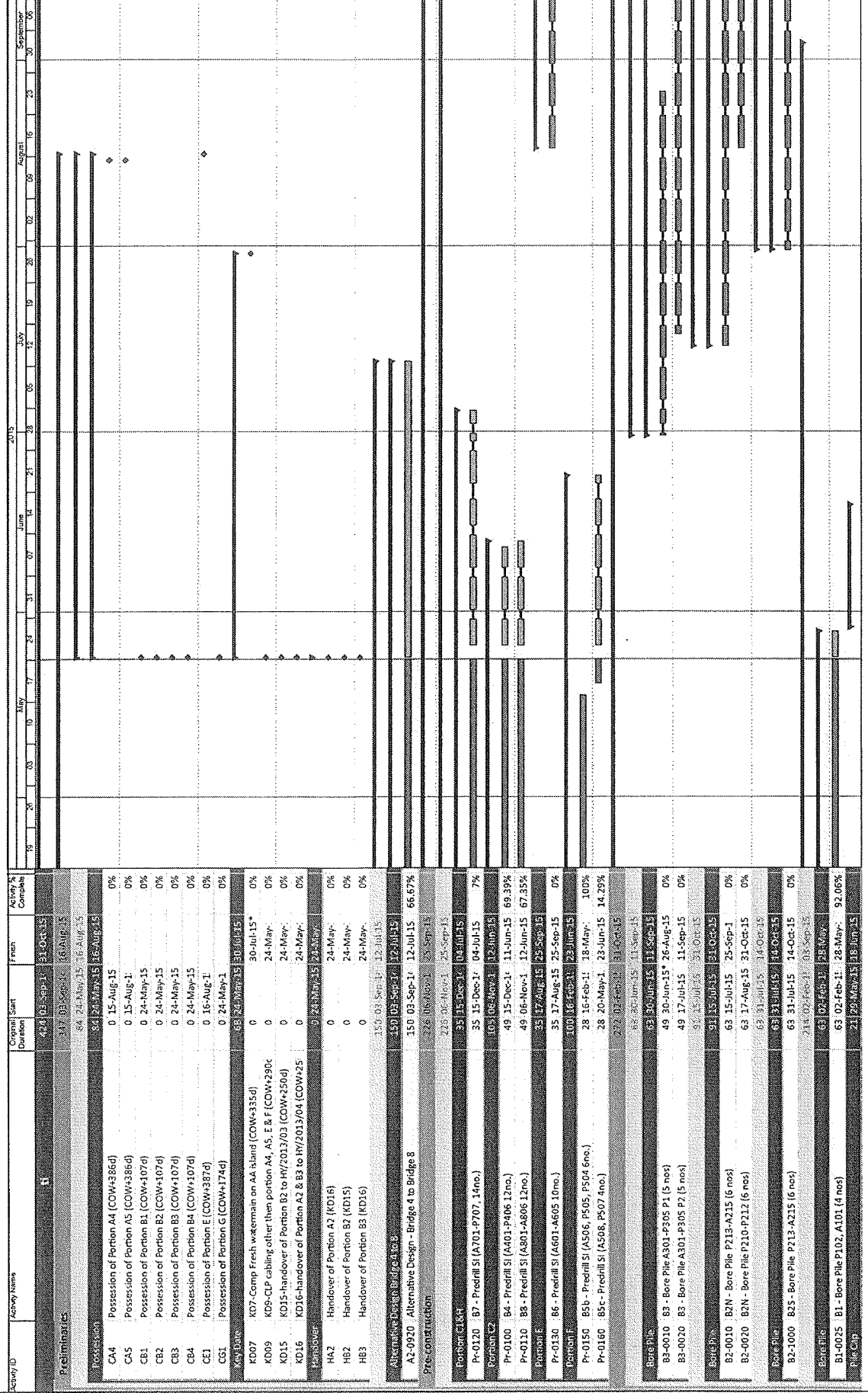


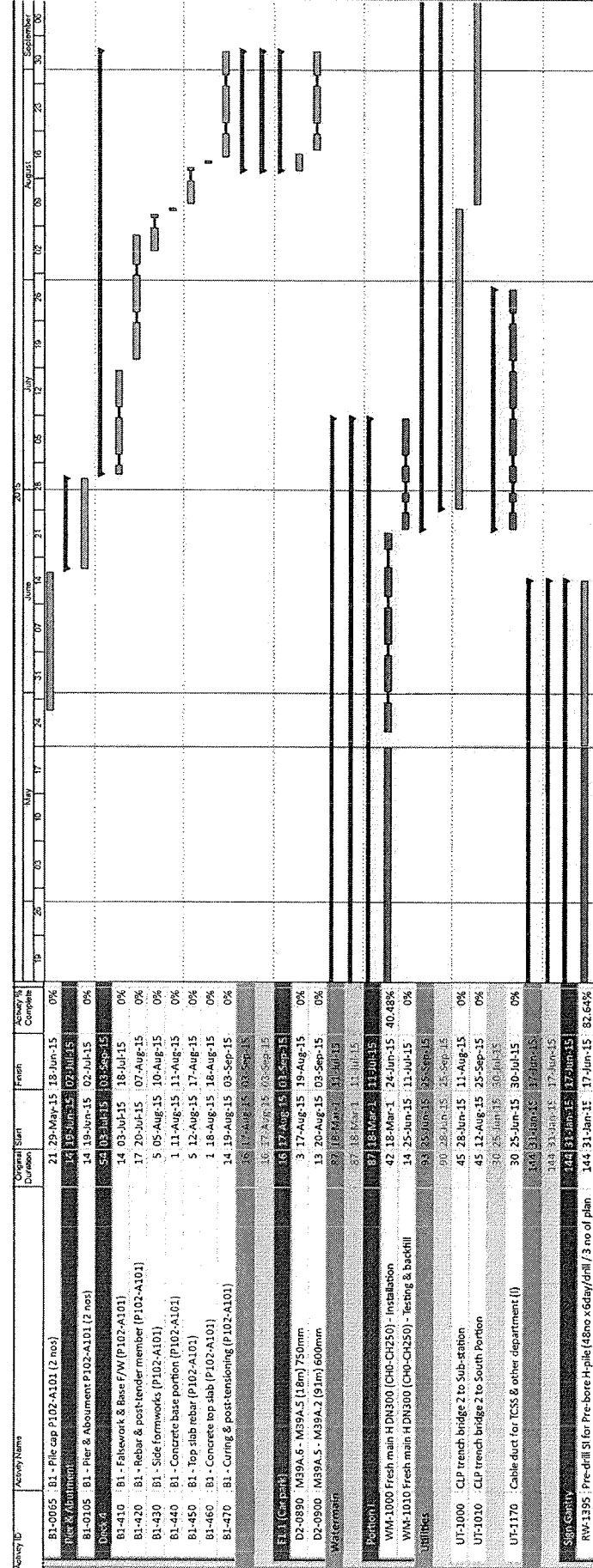
HKBCF Infrastructure (Western Portion) - Monthly Progress 10 - Three Month Rolling Programme

WP01-MRF10



Item	Actual Work	Remaining Work	Critical Remaining Work	Milestone
Remaining Level of Effort				
Actual Level of Effort				
Actual Work				
Remaining Work				
Critical Remaining Work				

HKBCF Infrastructure (Western Portion) - Monthly Progress 10 - Three Month Rolling Programme



Date	Revision	Checked	Approved
24-Apr-15	Monthly Report No. 10		

Summary

- Remaining Level of Effort
- Actual Level of Effort
- Actual Work
- Remaining Work
- Critical Remaining Work
- Milestone