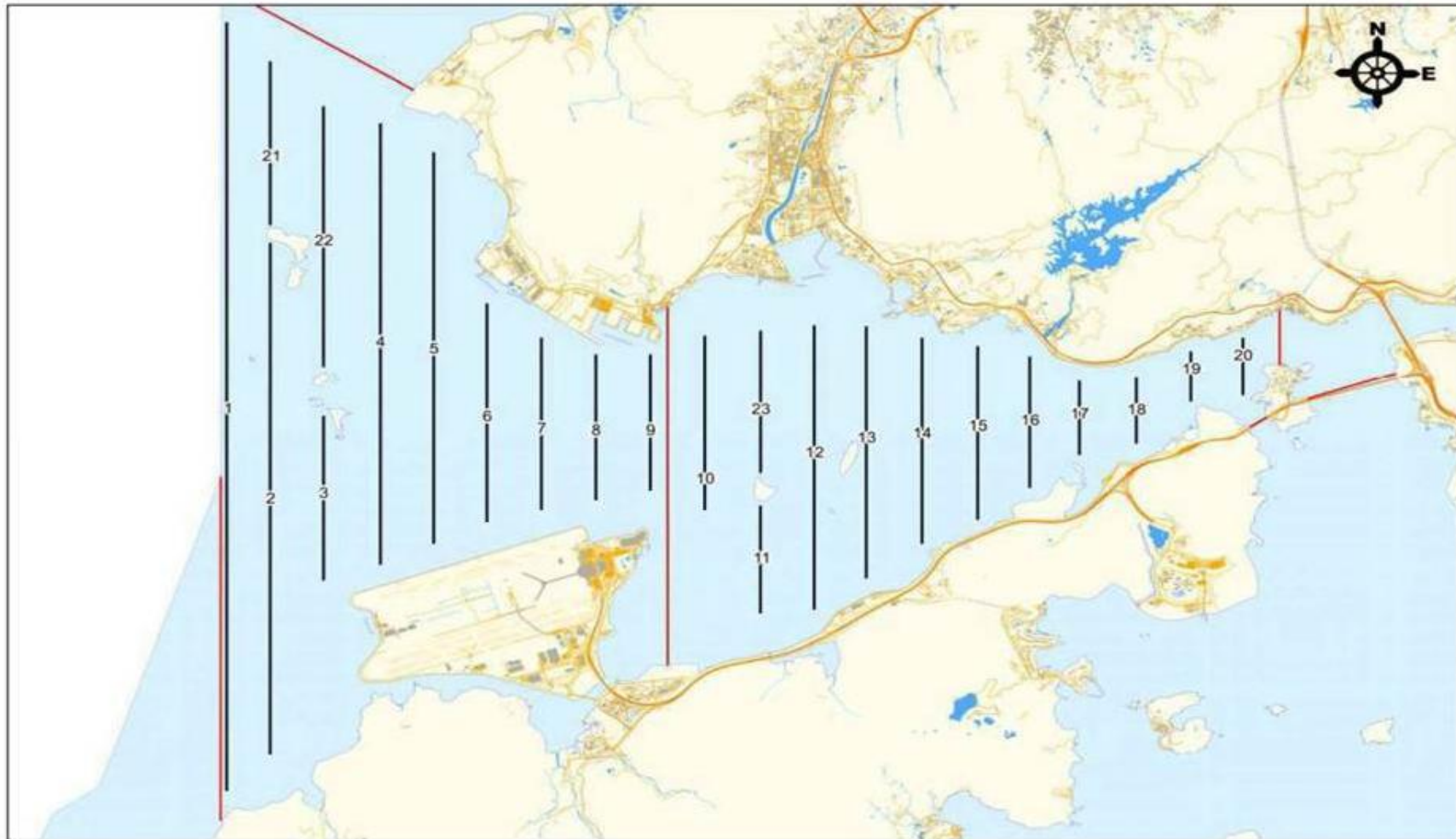


Figure 1 Air Quality and Noise Monitoring Stations for HKBCF



Figure 2 Water Quality Monitoring Stations (construction phases)



Remarks:

*Transect 10 is now 3.6km in length due to the HKBCF construction site.

^Coordinates for transect lines 1, 2, 7, 8, 9 and 11 have been updated in respect to the Proposal for Alteration of Transect Line for Dolphin Monitoring approved by EPD on 19 August 2015. The total transect length for both NEL and NWL combined is 108km.

Figure 3 Dolphin Monitoring Transect Line and Layout Map