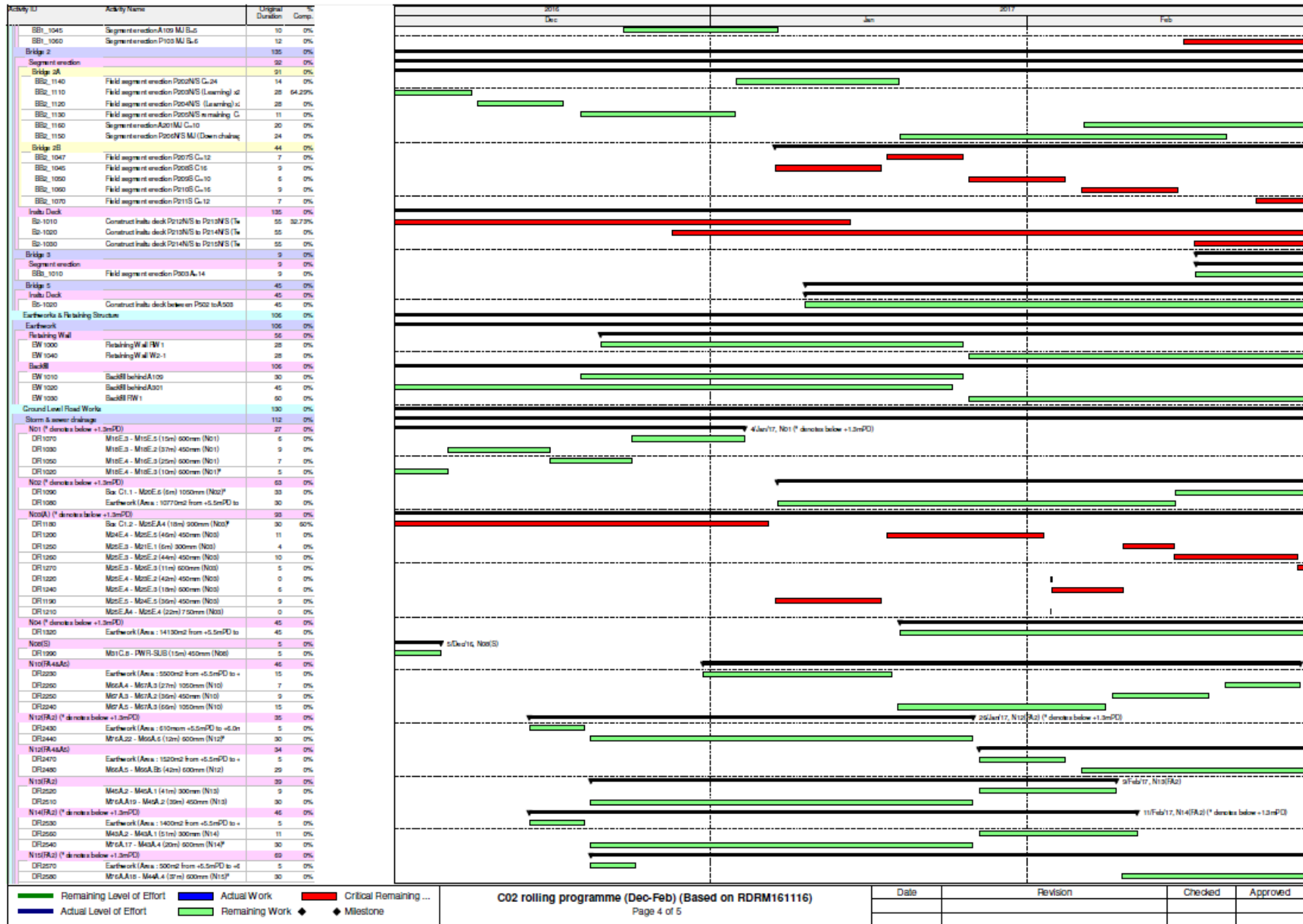


C02 rolling programme (Dec-Feb) (Based on RDRM161116)
Page 3 of 5



Activity ID	Activity Name	Original Duration	% Comp.	2016			2017		
				Dec	Jan	Feb	Jan	Feb	Mar
N15			30	0%					
DF2650	Earthwork (Area : 3000m2 from +0.5mPD to +		30	0%					
N16(FA2) (* de notes below +1.3mPD)			36	0%					
DF2640	MtA.20 - MtA.9 (67m) 1200mm (N16)*		36	36.11%					
N16			35	0%					
DF2650	Earthwork (Area : 12000 from +0.5mPD to +0.		35	0%					
N17(FA2) (* de notes below +1.3mPD)			35	0%					
DF2740	Earthwork (Area : 1500m2 from +0.5mPD to +0		5	0%					
DF2750	MtA.10 - MtA.15 (12m) 1200mm (N17)*		30	0%					
N17			12	0%					
DF2770	MtA.10 - MtA.10 (67m) 1050mm (N17)		12	58.33%					
N18			11	0%					
DF2800	MtA.10 - MtA.8 (25m) 1050mm (N18)		11	100%					
N19			11	0%					
DF2930	MtA.1 - MtA.1 (13m) 300mm (N19)		5	0%					
DF3000	MtA.5 - MtA.5 (10m) 750mm (N19)		6	0%					
N20(FA2) (* de notes below +1.3mPD)			10	0%					
DF3040	Earthwork (Area : 10000m2 from +0.5mPD to		10	0%					
N20			60	0%					
DF3070	MtA.20 - MtA.9 (67m) 1050mm (N20)		15	0%					
DF3080	MtA.20 - MtA.20 (67m) 1050mm (N20)		45	40%					
Water main			52	0%					
Fresh water main			52	0%					
Portion D2 (at entrance)			44	0%					
FW1370	Fresh main H DN300 (CH250-CH400) - Instal		13	0%					
FW1380	Fresh main H DN300 (CH250-CH400) - Test		14	0%					
FW1390	Fresh main H DN300 (CH0-CH50) - Instal		5	0%					
FW1400	Fresh main H DN300 (CH0-CH50) - Test		14	0%					
Portion D1 (12m/day)			25	0%					
FW1410	Fresh main H DN300 (CH400-CH700) - Instal		25	0%					
Portion C1			27	0%					
FW1210	Fresh main C1 NS115 (CH0-CH200) - Instal		13	0%					
FW1220	Fresh main C1 NS115 (CH0-CH200) - Test		14	0%					
Utilities			109	0%					
Utilities & ducting			66	0%					
Portion A (before CLP sub-station)			66	0%					
UH1040	Tel duct for abutment A001 at Bridge 3		21	0%					
UH1050	Tel duct from site entrance to Portion A		45	0%					
Cable duct (TCSS, ELV & LV)			45	0%					
Portion I			45	0%					
TCSS1030	Cable duct for TCSS, ELV, LV & other depart		45	40%					
Road furniture & float			100	0%					
Pre-bored H-pile & cap for sign gantry			110	0%					
RF1030	Cap - GT200, GT110, DS201 (7 no.)		49	0%					
RF1020	Cap - GT400, FADS302, FADS301 (3x2 no.)		42	0%					
RF1130	H-pile - GT122 (2x4 no.)		56	0%					
Road lighting design & submission			119	0%					
RF1110	Prepare, submit & approval of road lighting app		60	0%					
RF1130	Submit & approval of road lighting system sub-		60	13.33%					

█ Remaining Level of Effort
 █ Actual Work
 █ Critical Remaining ...
█ Actual Level of Effort
 █ Remaining Work
 ◆ Milestone

C02 rolling programme (Dec-Feb) (Based on RDRM161116)

Date	Revision	Checked	Approved