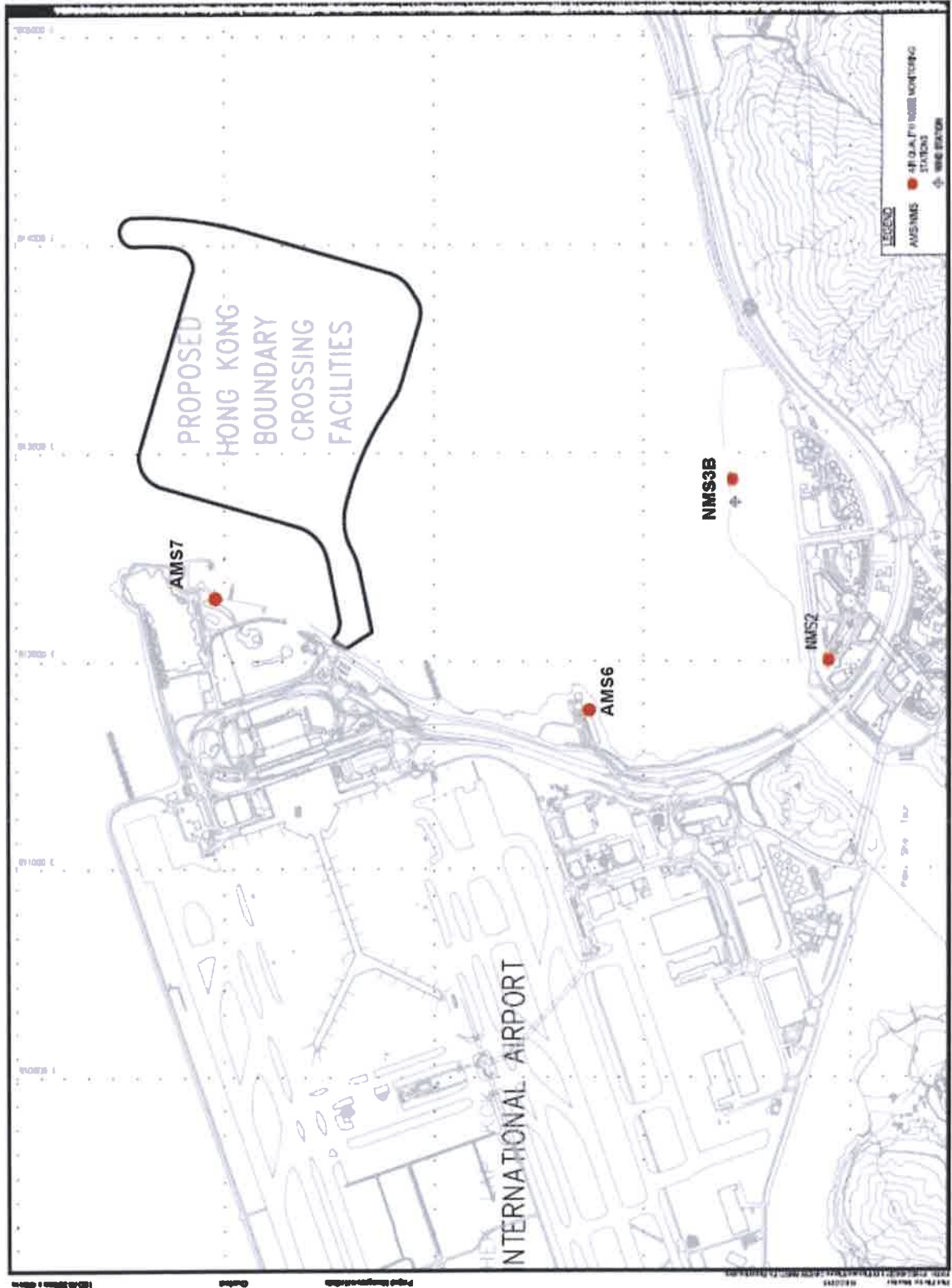


Figure 2



AIR QUALITY AND NOISE
 MONITORING STATIONS
 FOR HKBCF

HONG KONG - ZHUZHOU - MACAO BRIDGE
 RECLAMATION WORKS
 PROJECT No. -
 Date: JANUARY 2016

Air Quality and Noise Monitoring Stations for HKBCF

Figure 1

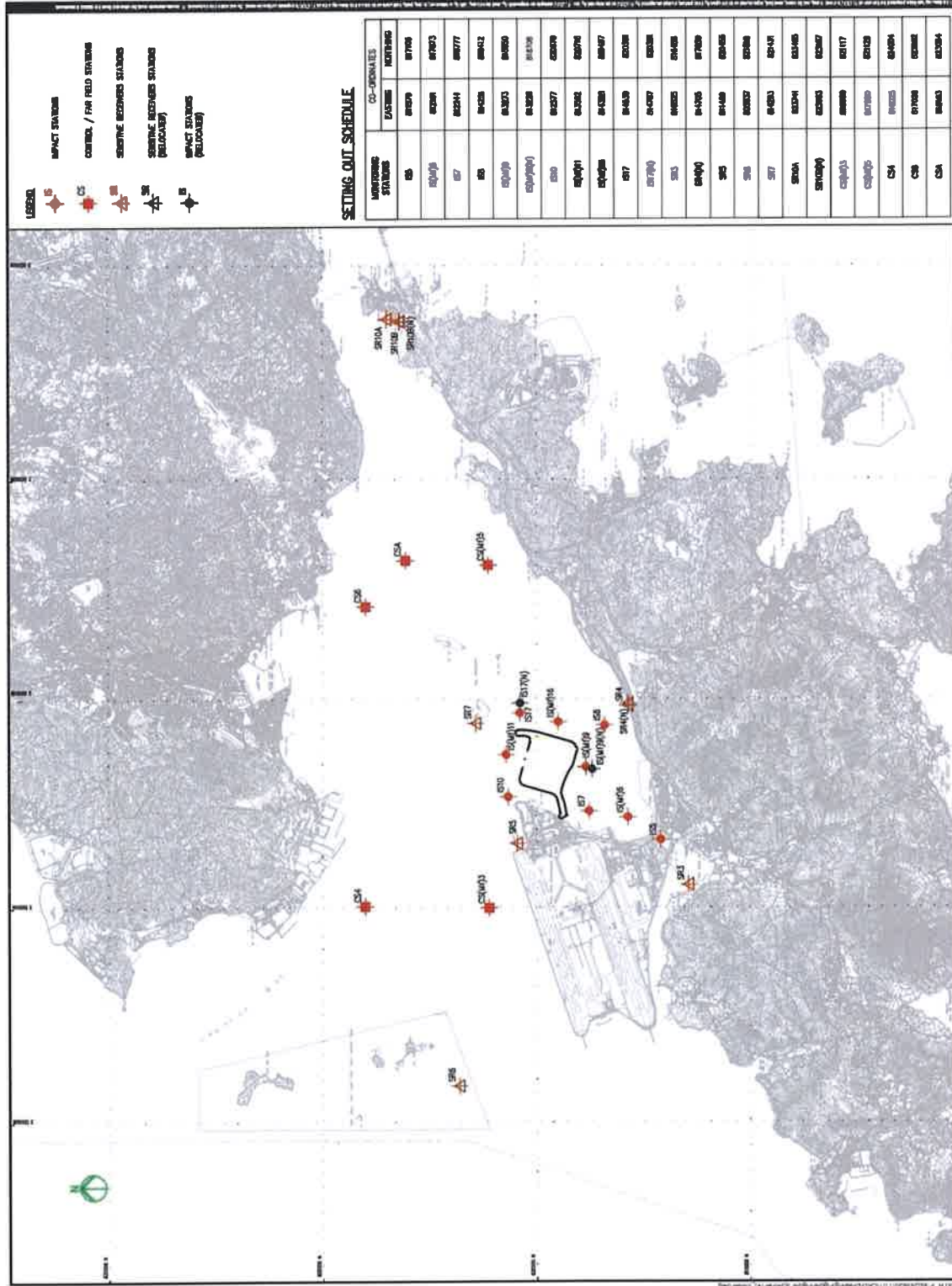


Figure 2.1 Water Quality Monitoring Stations (construction phases) on or before 15 May 2017

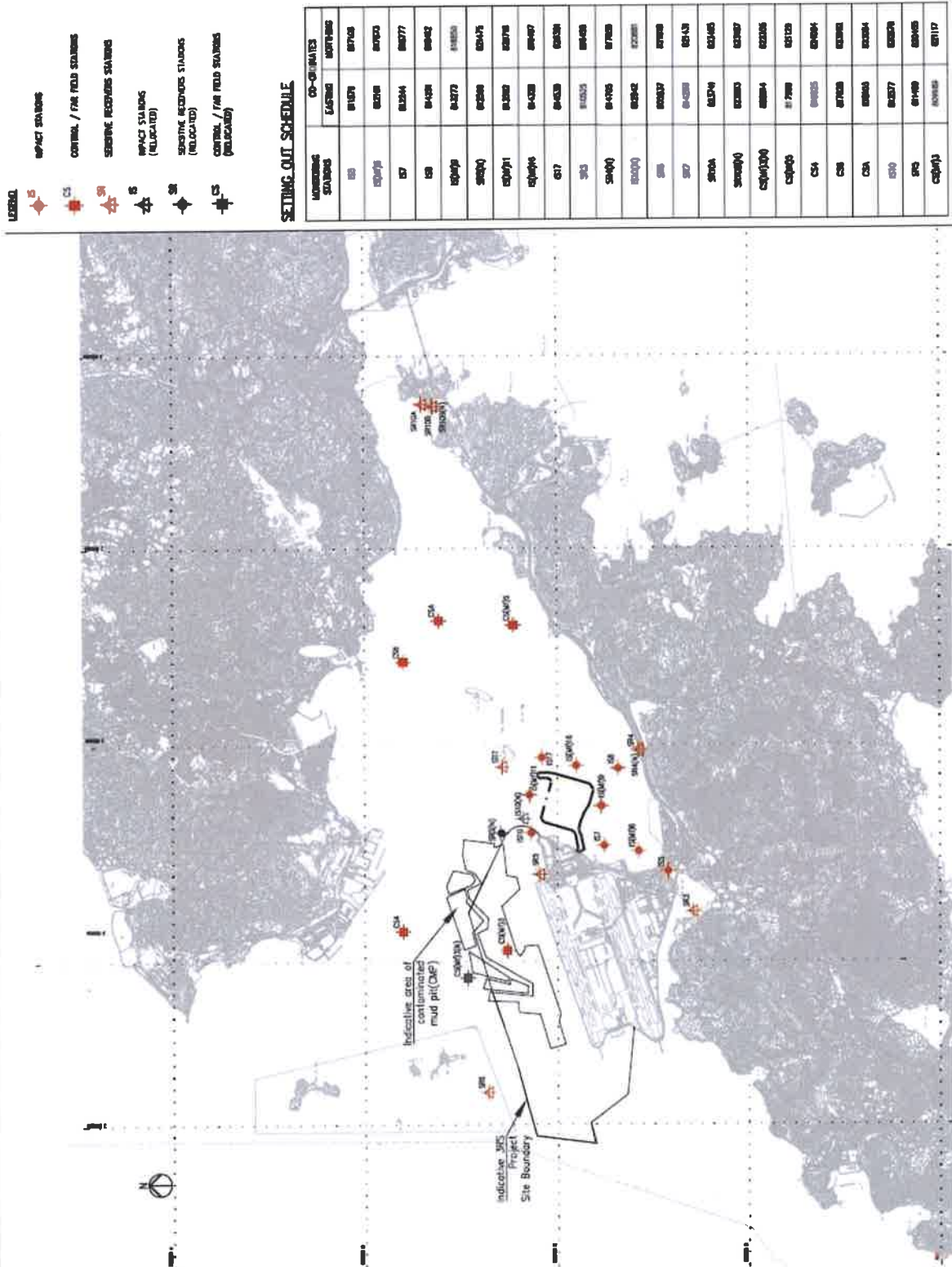
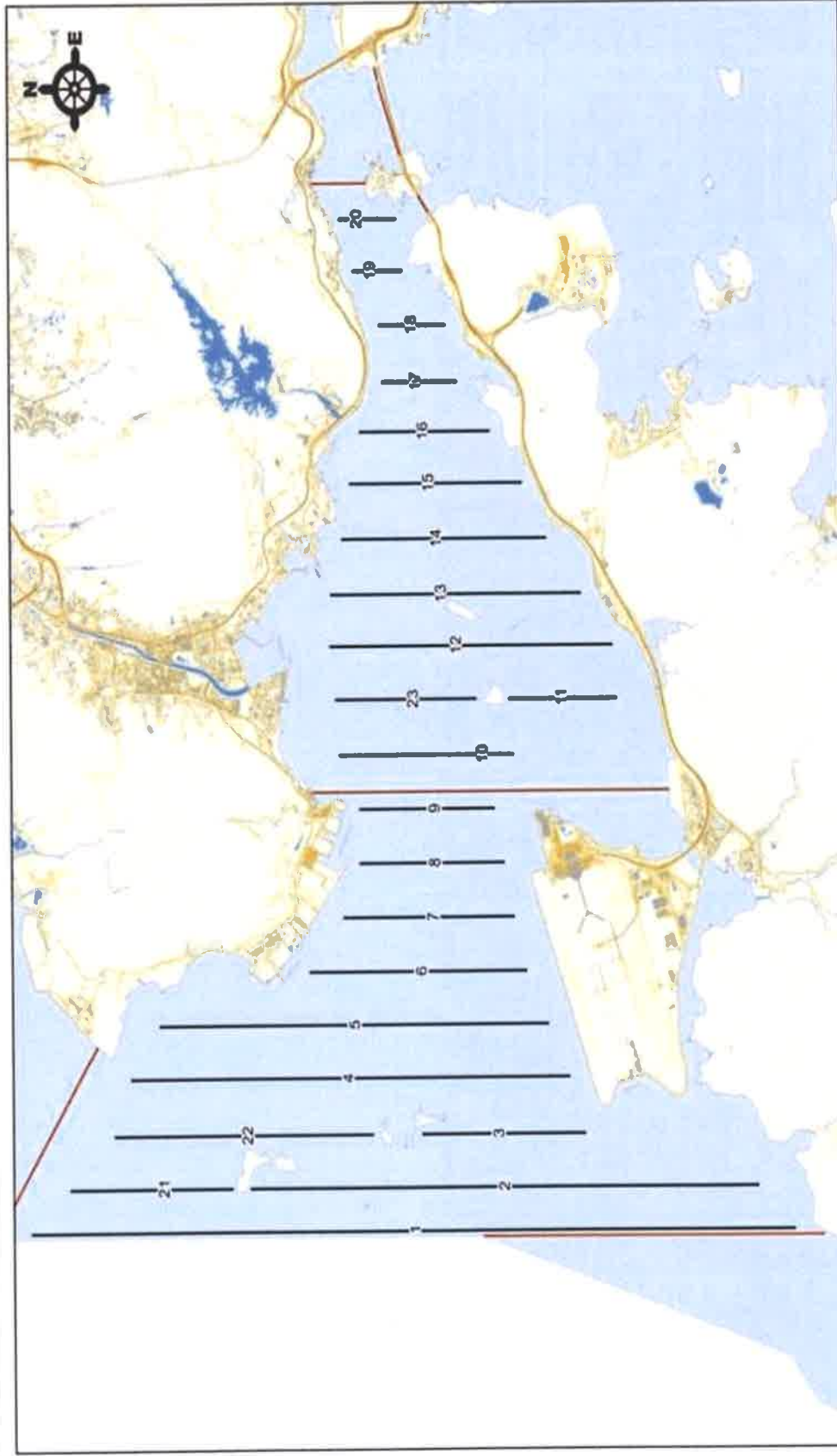


Figure 2.2 Water Quality Monitoring Stations (construction phases) after 15 May 2017



Remarks:

^Transect 10 is now 3.6km in length due to the HKBCF construction site.

^Coordinates for transect lines 1, 2, 7, 8, 9 and 11 have been updated in respect to the Proposal for Alteration of Transect Line for Dolphin Monitoring approved by EPD on 19 August 2015. The total transect length for both NEL and NWL combined is 108km.

Figure 3.1 Dolphin Monitoring Transect Line and Layout Map on and before 15 May 2017

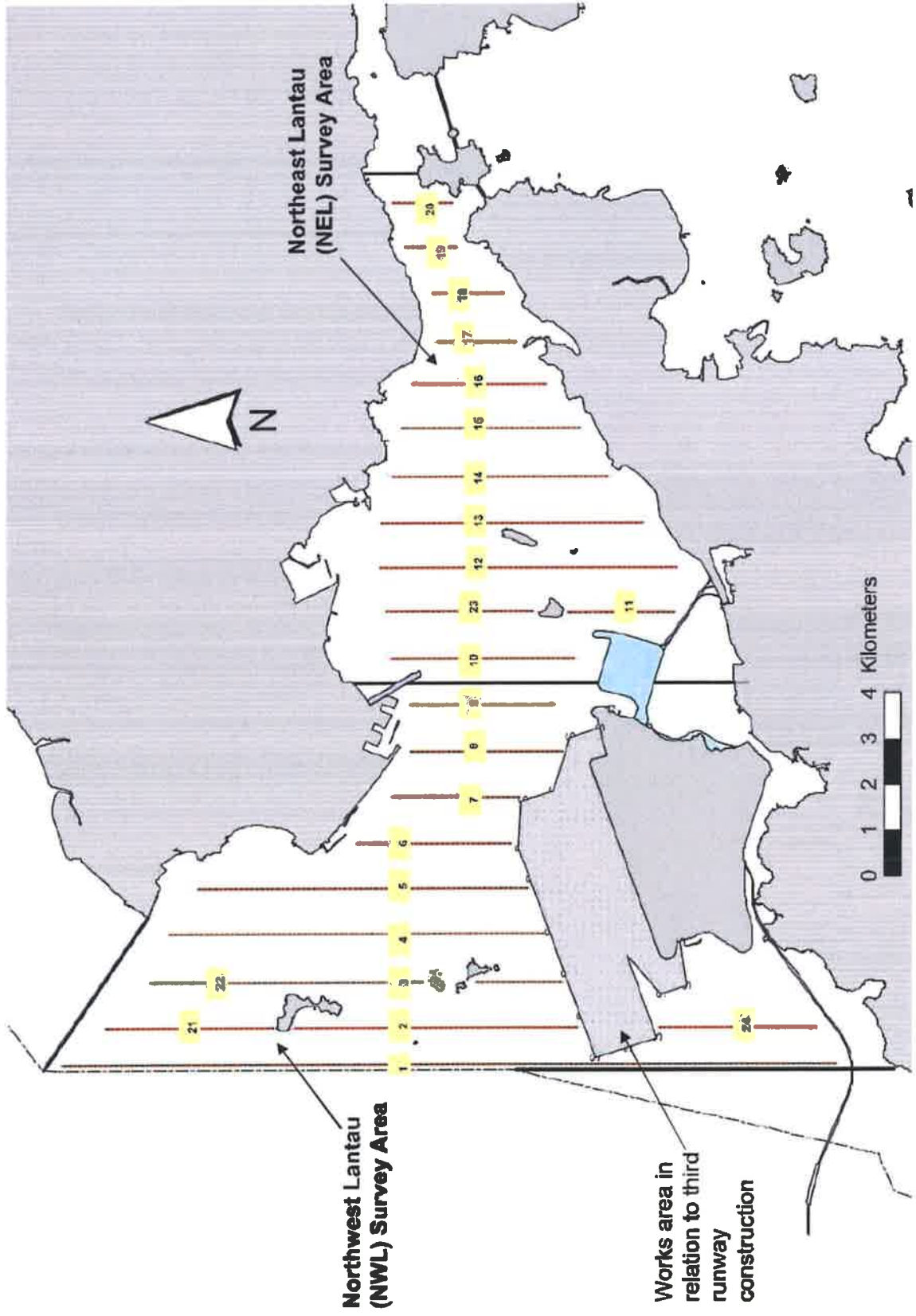


Figure 3.2 Dolphin Monitoring Transect Line and Layout Map after 15 May 2017