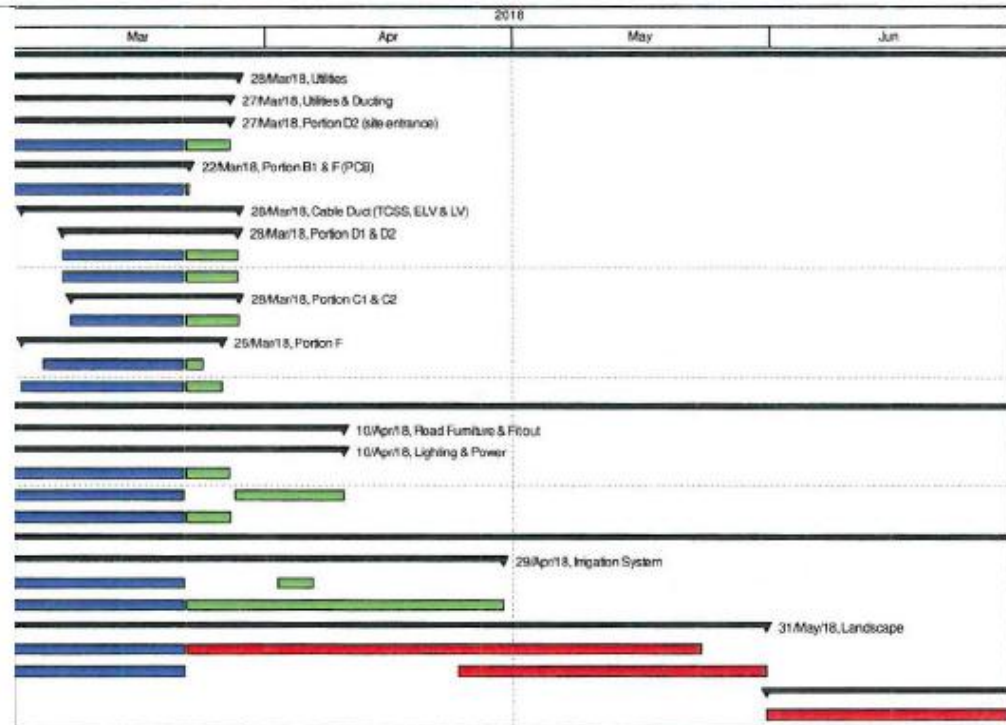


Appendix C

Construction Programme

HKBCF Infrastructure (Western Portion) - Monthly Progress 44 - Three Month Rolling Programme

Activity ID	Activity Name	Original Duration	% Comp
HKBCF Infrastructure (Western Portion) - Monthly Progress 44			
Utilities		133	
Utilities & Ducting		147	
Portion D2 (site entrance)		120	
UT-1130	Tel Duct from HKLR Site to Portion D1	120	95%
Portion B1 & F (PCB)		120	
UT-1070	Tel Duct from Sub-station to PCB	120	39.17%
Cable Duct (TCSS, ELV & LV)		50	
Portion D1 & D2		45	
UT-1150	Cable duct for TCSS, ELV, LV & other department (D1)	45	87%
UT-1160	Cable duct for TCSS, ELV, LV & other department (D2)	45	87%
Portion C1 & C2		30	
UT-1220	Cable duct for TCSS, ELV, LV & other department (Car park syst)	30	80%
Portion F		50	
UT-1200	Cable duct for TCSS, ELV, LV & other department (F - Bridge 5)	21	90%
UT-1250	Cable duct for TCSS, ELV, LV & other department (F - Near PCB)	21	30.95%
Road Works		398	
Road Furniture & Fitout		158	
Lighting & Power		158	
RW-1530	Lighting & Power to at-grade road	120	96%
RW-1540	T&C for lighting & power system	45	75%
RW-1670	Lightning protection work for Sign Gantry	60	90%
Landscape		464	
Irrigation System		90	
RW-1590	Pump installation for irrigation system	90	95%
RW-1600	Irrigation system installation & T&C	60	35%
Landscape		281	
RW-1610	Landscape hardworks	90	30%
RW-1620	Landscape softwork	60	37%
Landscape Establishment		365	
RW-1630	Establishment work for Landscape	365	0%



█ Remaining Level of Effort
 █ Actual Work
 █ Critical Remaining Work
 ▼ Milestone
█ Actual Level of Effort
 █ Remaining Work
 ◆ Milestone

Date	Revision	Checked	Approved
22 Mar 18	Three Month Rolling Programme		