

## **MATERIALAB CONSULTANTS LIMITED**

Room 723 & 725, 7/F, Block B,  
Profit Industrial Building,  
1-15 Kwai Fung Crescent, Kwai Fong,  
Hong Kong.

Tel : (852)-24508238  
Fax : (852)-24508032  
Email : mcl@fugro.com

---

**Materialab**

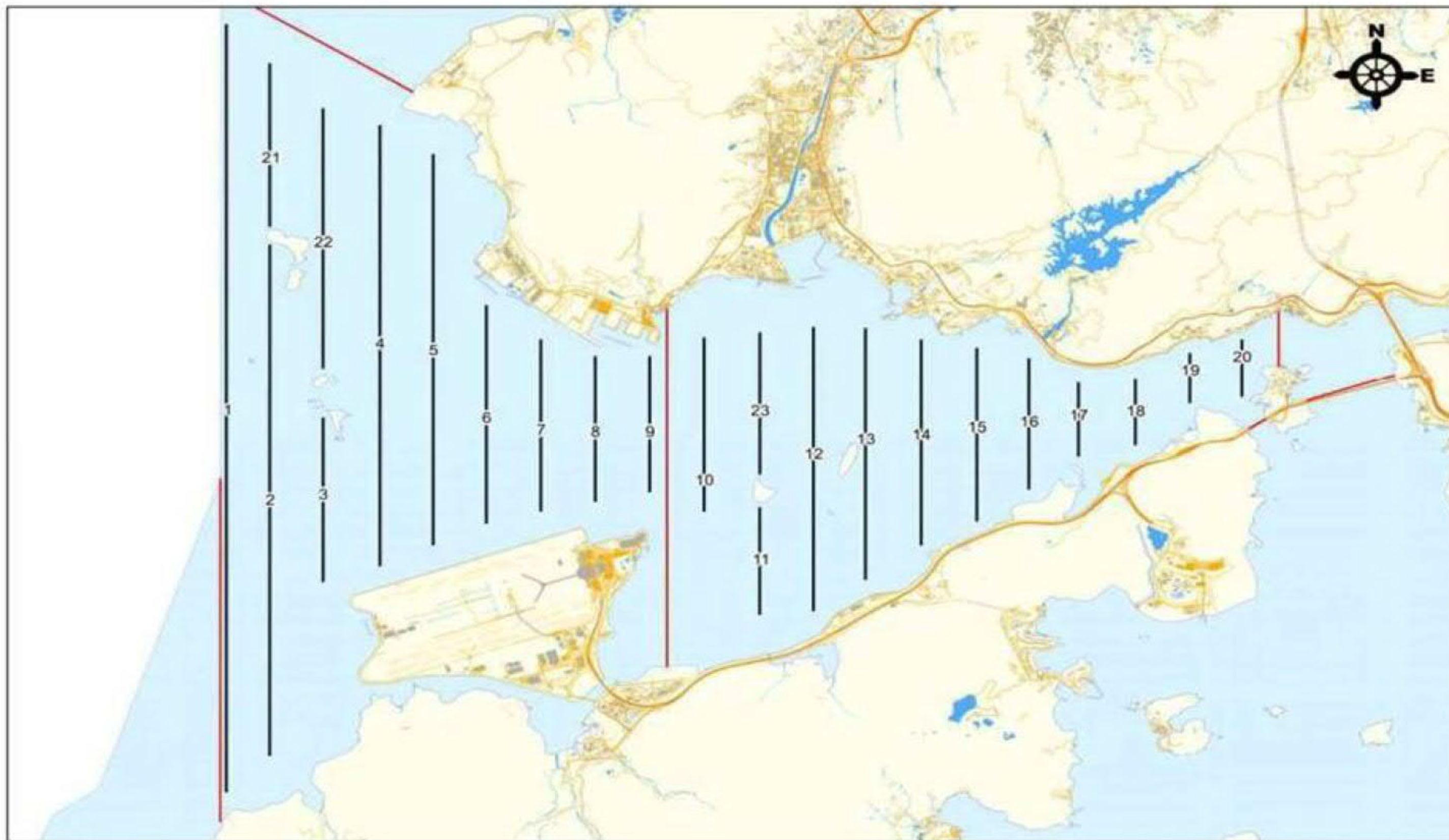
---

Report No.: 0165/15/ED/1178

---

### **Figure 4**

#### **Ecological Monitoring Transect Line and Layout Map**



**Remarks:**

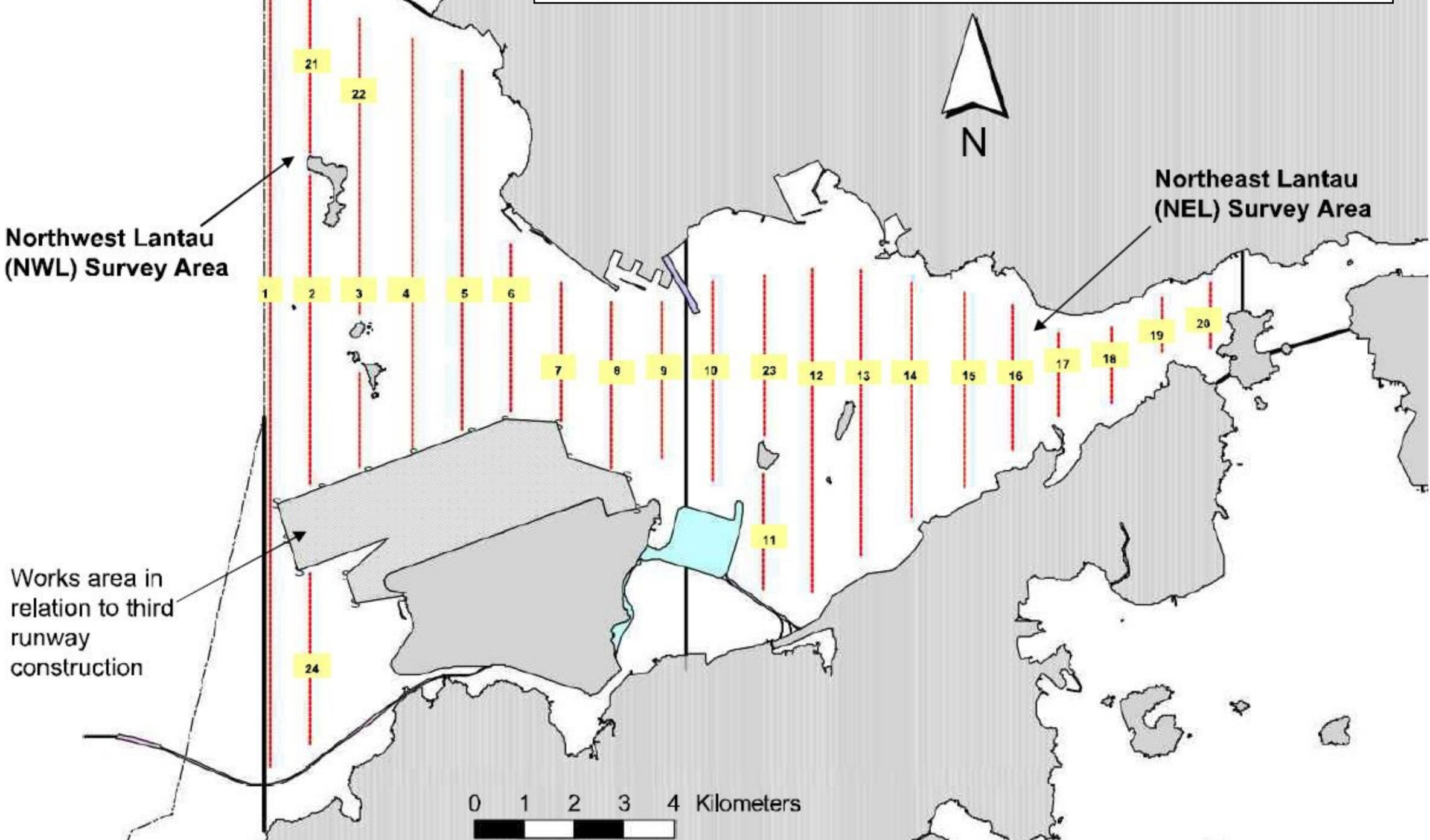
\*Transect 10 is now 3.6km in length due to the HKBCF construction site.

^Coordinates for transect lines 1, 2, 7, 8, 9 and 11 have been updated in respect to the Proposal for Alteration of Transect Line for Dolphin Monitoring approved by EPD on 19 August 2015. The total transect length for both NEL and NWL combined is 108km.

### **Dolphin Monitoring Transect Line and Layout Map**

(Original Ecological Monitoring Transect Line and Layout Map before the Changes of EM&A Programme)

From May 2017 to Jan 2019  
(New Ecological Monitoring Transect Line and Layout Map after the Changes of EM&A Programme)



Northwest Lantau (NWL) Survey Area

Northeast Lantau (NEL) Survey Area

Works area in relation to third runway construction

0 1 2 3 4 Kilometers