

MATERIALAB CONSULTANTS LIMITED

Room 723 & 725, 7/F, Block B,
Profit Industrial Building,
1-15 Kwai Fung Crescent, Kwai Fong,
Hong Kong.

Tel : (852)-24508238
Fax : (852)-24508032
Email : mcl@fugro.com

Materialab

Report No.: 0165/15/ED/0504

MONTHLY ENVIRONMENTAL MONITORING & AUDIT REPORT (Rev. 1)

June 2016

Client: China Harbour Engineering Co., Ltd.

Project: Contract No. HY/2013/03
Hong Kong-Zhuhai-Macao Bridge
Hong Kong Boundary Crossing Facilities -
Vehicle Clearance Plazas and
Ancillary Buildings and Facilities

Report No.: 0165/15/ED/0504

Prepared by: Sandra Pang

Reviewed by: Bong Yu

Certified by:


Arthur Cheng
Environmental Team Leader

15 July 2016

By Fax (3468 2076) and By Post

AECOM Asia Co. Ltd.
The PRE's Office
5 Ying Hei Road, Tung Chung, Lantau
Hong Kong

Attention: Mr. Michael Tovey

Dear Sir,

**Re: Agreement No. CE 48/2011 (EP)
Environmental Project Office for the
HZMB Hong Kong Link Road, HZMB Hong Kong Boundary Crossing Facilities,
and Tuen Mun-Chek Lap Kok Link – Investigation**

**Contract No. HY/2013/03 – HZMB HKBCF – Vehicle Clearance Plazas and
Ancillary Buildings and Facilities
Monthly Environmental Monitoring & Audit Report for June 2016**

Reference is made to the Environmental Team's submission of Monthly Environmental Monitoring & Audit Report for June 2016 (Rev. 1) certified by the ET Leader (ET's ref.: "MCL/ED/0403/2016/C" dated 15 July 2016) and provided to us via e-mail on 15 July 2016.

We are pleased to inform you that we have no adverse comment on the captioned submission. We write to verify the captioned submission in accordance with Condition 5.4 of the Environmental Permit No. EP-353/2009/K.

The Contractor and Environmental Team are reminded to pay close attention on implementation of Regular Marine Traffic Routes Plan and timely submission of required records to relevant parties in accordance with the plan.

Thank you very much for your attention and please feel free to contact the undersigned should you require further information.

Yours faithfully,
For and on behalf of
Ramboll Environ Hong Kong Limited



Raymond Dai
Independent Environmental Checker

c.c.	HyD	Mr. Vico Cheung	(By Fax: 3188 6614)
	HyD	Mr. Ken Woo	(By Fax: 3188 6614)
	MCL	Mr. Arthur Cheng	(By Fax: 2450 8032)
	CHEC	Mr. Johnason Ko	(By Fax: 2887 3014)

Internal: DY, YH, ENPO Site

Q:\Projects\HYDZHMBEEM00\02_Proj_Mgt\02_Corr\HYDZHMBEEM00_0_4380L.16.doc

Room 723 & 725, 7/F, Block B,
Profit Industrial Building,
1-15 Kwai Fung Crescent, Kwai Fong,
Hong Kong
Tel : +852-2450 8238
Fax : +852-2450 8032
E-mail : mcl@fugro.com.hk
Website : www.materialab-consultant.com

Date 15 July 2016
Our Ref. MCL/ED/0403/2016/C

Ramboll Environ Hong Kong Limited
(formerly ENVIRON Hong Kong Limited)
Room 2403, 24/F, Jubilee Centre,
18 Fenwick Street, Wan Chai,
Hong Kong

BY HAND

Attn.: Mr. Raymond Dai, IEC

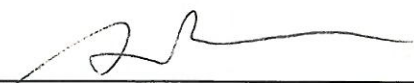
Dear Sir,

**EP Condition 5.4 – Monthly EM&A Report for
Hong Kong-Zhuhai-Macao Bridge Hong Kong Boundary Crossing Facilities –
Vehicle Clearance Plazas and Ancillary Buildings and Facilities (Contract No. HY/2013/03)**

Pursuant to Condition 5.4 of the Environmental Permit (EP-353/2009/K) for the captioned project, we are pleased to submit the certified Monthly EM&A Report for June 2016 (Rev.1) for your verification.

Should you require further information, please do not hesitate to contact our Miss Sandra Pang at 3565 4156 or the undersigned at 3565 4115.

Yours faithfully,
for and on behalf of
MATERIALAB CONSULTANTS LIMITED



Arthur Cheng
Environmental Team Leader

AC/by

c.c. AECOM – Mr. P.K. Lee, Mr. W.S. Ng, Mr. Patrick Ko
RAMBOLL ENVIRON – Mr. Ray Yan, Mr. Andy Wong
CHEC – Mr. Marko Chan

MATERIALAB CONSULTANTS LIMITED

Room 723 & 725, 7/F, Block B,
Profit Industrial Building,
1-15 Kwai Fung Crescent, Kwai Fong,
Hong Kong.

Tel : (852)-24508238
Fax : (852)-24508032
Email : mcl@fugro.com

Materialab

Report No.: 0165/15/ED/0504

CONTENTS

EXECUTIVE SUMMARY

1. INTRODUCTION
 - 1.1 Background
 - 1.2 Project Description
 - 1.3 Project Organisation
 - 1.4 Construction Programme
 - 1.5 Construction Works undertaken during the Reporting Period
2. AIR QUALITY MONITORING
 - 2.1 Monitoring Locations
 - 2.2 Monitoring Requirements
 - 2.3 Monitoring Results
3. NOISE MONITORING
 - 3.1 Monitoring Locations
 - 3.2 Monitoring Requirements
 - 3.3 Monitoring Results
4. WATER QUALITY MONITORING
5. ECOLOGY MONITORING
6. DISPOSAL OF MARINE SEDIMENT EXTRACTED FROM BORED PILING WORKS
 - 6.1 Background
 - 6.2 Dumping Arrangements
 - 6.3 Quantity Disposed
7. ENVIRONMENTAL SITE INSPECTION AND AUDIT
 - 7.1 Site Inspection
 - 7.2 Advice on the Solid and Liquid Waste Management Status
 - 7.3 Environmental Licenses and Permits
 - 7.4 Implementation Status of Environmental Mitigation Measures
 - 7.5 Summary of Exceedance of the Environmental Quality Performance Limit
 - 7.6 Summary of Complaints, Notification of Summons and Successful Prosecution
8. FUTURE KEY ISSUES
 - 8.1 Construction Programme for the Coming Months
 - 8.2 Environmental Site Inspection Schedule for the Coming Month
9. CONCLUSIONS

MATERIALAB CONSULTANTS LIMITED

Room 723 & 725, 7/F, Block B,
Profit Industrial Building,
1-15 Kwai Fung Crescent, Kwai Fong,
Hong Kong.

Tel : (852)-24508238
Fax : (852)-24508032
Email : mcl@fugro.com

Materialab

Report No.: 0165/15/ED/0504

APPENDICES

- A Location of Works Areas
- B Project Organization for Environmental Works
- C Construction Program
- D Event / Action Plan
- E Waste Flow Table
- F Environmental Licenses and Permits
- G Implementation Schedule for Environmental Mitigation Measures (EMIS)
- H Statistics on Environmental Complaints, Notification of Summons and Successful Prosecutions
- I Environmental Site Inspection Schedule

FIGURES

- Figure 1 Air Quality Monitoring Stations
- Figure 2 Noise Monitoring Stations

MATERIALAB CONSULTANTS LIMITED

Room 723 & 725, 7/F, Block B,
Profit Industrial Building,
1-15 Kwai Fung Crescent, Kwai Fong,
Hong Kong.

Tel : (852)-24508238
Fax : (852)-24508032
Email : mcl@fugro.com

The logo for MaterialLab, featuring the word "MaterialLab" in a bold, black, sans-serif font. The text is centered between two thick, horizontal black bars.

Report No.: 0165/15/ED/0504

EXECUTIVE SUMMARY

This Monthly Environmental Monitoring and Audit (EM&A) Report is prepared for Contract No. HY/2013/03 “Hong Kong-Zhuhai-Macao Bridge Hong Kong Boundary Crossing Facilities – Vehicle Clearance Plazas and Ancillary Buildings and Facilities” (hereafter referred to as “the Contract”) for the Highways Department of Hong Kong Special Administrative Region (HKSAR). The Contract was awarded to China Harbour Engineering Co. Limited (hereafter referred to as “the Contractor”) and MaterialLab Consultants Limited (MCL) was appointed as the Environmental Team (ET) by the Contractor.

The Contract is part of the “Hong Kong-Zhuhai-Macao Bridge Hong Kong Boundary Crossing Facilities” (HZMB HKBCF) Project which is a “Designated Project” under Schedule 2 of the Environmental Impact Assessment (EIA) Ordinance (Cap. 499) and for which an EIA Report (Register No. AEIAR-145/2009) was prepared and approved. The current Environmental Permit (EP) for HKBCF, namely No. EP-353/2009/K, was issued on 11 April 2016. These documents are available through the EIA Ordinance Register.

Commencement of the Contract took place on 10 April 2015 while the construction works and the EM&A programme of this Contract commenced on 29 August 2015.

MaterialLab Consultants Limited (MCL) has been appointed by the Contractor to implement the Environmental Monitoring & Audit (EM&A) programme for the Contract in accordance with the Updated EM&A Manual for HKBCF (Version 1.0) and will be providing environmental team services for the Contract.

This is the 10th Monthly EM&A Report for the Contract which summaries findings of the EM&A programme during the reporting period from 01 June 2016 to 30 June 2016 (the “reporting period”). The monthly EM&A programme was undertaken in accordance with the Updated EM&A Manual for HKBCF (Version 1.0). It should be noted that the air quality and noise monitoring works for the Contract are covered by Contract No. HY/2010/02 “Hong Kong-Zhuhai-Macao Bridge HKBCF – Reclamation Works” and Contract No. HY/2011/03 “Hong Kong-Zhuhai-Macao Bridge Hong Kong Link Road – Section between Scenic Hill and HKBCF”. The ET of the Contract or another ET of the HZMB project is required to conduct impact air quality monitoring at AMS6 and AMS7 and noise monitoring at NMS2 and NMS3B as part of EM&A programme if these monitoring stations are no longer covered under Contract No. HY/2010/02 and HY/2011/03. However, this is subject to ENPO’s final decision on which ET should carry out the monitoring work at these stations.

The dates of site inspection during the reporting period are listed below:

Environmental Site Inspection: 03, 10, 17, 24 and 30 June 2016.

Breaches of Action and Limit Levels

Summary of Action and Limit Level exceedance of 1-hr TSP level and 24-hr TSP level at AMS6 shall be referred to the monthly EM&A report prepared by Contract No. HY/2011/03.

There was no Action and Limit Level exceedance of 1-hr TSP level and 24-hr TSP level recorded at station AMS7 by the Environmental Team of Contract No. HY/2010/02 during the reporting period.

There was no Action and Limit Level exceedance for noise recorded at station NMS2 and station NMS3B by the Environmental Team of Contract No. HY/2010/02 during the reporting period.

MATERIALAB CONSULTANTS LIMITED

Room 723 & 725, 7/F, Block B,
Profit Industrial Building,
1-15 Kwai Fung Crescent, Kwai Fong,
Hong Kong.

Tel : (852)-24508238
Fax : (852)-24508032
Email : mcl@fugro.com

Materialab

Report No.: 0165/15/ED/0504

There was no marine works conducted during the reporting period and therefore, no water quality impact monitoring result is reported.

There was no marine works conducted during the reporting period and therefore, no ecology monitoring result is reported.

Complaint Log

There were no complaints received in relation to the environmental impact during the reporting period.

Notifications of Summons and Successful Prosecutions

There were no notifications of summons or prosecutions received during this reporting period.

Reporting Changes

There was no reporting change during the reporting period.

Future Key Issues

The future key issues to be undertaken in the upcoming month are:

- Site Investigation at Portion G;
- Piling at Portion A1, STP, G (Bridge A1 – A5, A7b, A8 & A9);
- Building at Portion A1 & G;
- CUE Construction, Drainage & Sewerage Work, Radiation Screen Wall and Sign Gantry Footing at Portion B;
- Bridge Construction, High Mast Lighting Foundation, Pumping Station & Box Culvert D at Portion G; and
- Marine sediment excavation activities from the land-based works and corresponding disposal at the designated disposal sites within Hong Kong as allocated by the Marine Fill Committee.

Report No.: 0165/15/ED/0504

1. INTRODUCTION

1.1 Background

1.1.1 Materialab Consultants Limited was commissioned by China Harbour Engineering Co. Limited (also referred to as “the Contractor”) to undertake the Environmental Team (ET) services (including environmental monitoring and audit (EM&A)) for Contract No. HY/2013/03 “Hong Kong-Zhuhai-Macao Bridge Hong Kong Boundary Crossing Facilities – Vehicle Clearance Plazas and Ancillary Buildings and Facilities” (“the Contract”) for the Highways Department of Hong Kong Special Administrative Region (HKSAR).

1.1.2 The Contract is part of Hong Kong–Zhuhai–Macao Bridge Hong Kong Boundary Crossing Facilities (HKBCF) which is “Designated Projects”, under Schedule 2 of the Environmental Impact Assessment Ordinance (EIAO) (Cap 499) and for which an EIA Report (Register No. AEIAR-145-2009) was prepared and approved. The current Environmental Permit (EP) for HKBCF, namely No. EP- 353/2009/K, was issued on 11 April 2016. These documents are available through the EIA Ordinance. The general layout of the Project area is shown in **Appendix A**.

1.1.3 This is the tenth EM&A report to document the findings of site inspection activities and EM&A programme carried out by the Contractor from 01 June 2016 to 30 June 2016 (reporting period) under Contract No. HY/2013/03 and is submitted to fulfil Condition 5.4 of the EP.

1.2 Project Description

1.2.1 The works to be executed under this Contract include the following major items:

- a. Cargo clearance facilities including kiosks for clearance of good vehicles, customs inspection platforms, X-ray building, etc.;
- b. Passenger related facilities including processing kiosks and examination facilities for private cars and coaches, annexure for examination of accompanying passengers of private cars, etc.;
- c. Accommodation/offices for the facilities (like fire station, police station, buildings for Immigration Department [ImmD], Hong Kong Customs and Excise Department [C&ED], Agriculture, Fisheries and Conservation Department [AFCD], Food and Environmental Hygiene Department [FEHD], Department of Health [DofH] etc.) of the Government departments providing services in connection with the HKBCF;
- d. Provision of transport and miscellaneous facilities inside the HKBCF including public transport interchange (PTI), transport drop-off and pick-up areas, vehicle holding areas, passenger queuing areas, road networks, footbridges, fencing, sewerage and drainage systems, sewage treatment plant and treated effluent disposal facilities, water supply system, building services works, electronic system, and traffic control and information system including traffic control and surveillance system (TCSS), etc.;
- e. Provision of roads connecting the BCF to the Hong Kong Link Road (HKLR), the Tuen Mun – Chek Lap Kok Link (TM-CLKL) and the Hong Kong International Airport (HKIA), expect the part of road works in HKIA entrusted to the HKLR project; and
- f. Reprovisioning of the affected HKIA’s facilities, expect those affected by the Automated People Mover (APM) system such as the existing east rescue berth.

1.3 Project Organisation

MATERIALAB CONSULTANTS LIMITED

Room 723 & 725, 7/F, Block B,
Profit Industrial Building,
1-15 Kwai Fung Crescent, Kwai Fong,
Hong Kong.

Tel : (852)-24508238
Fax : (852)-24508032
Email : mcl@fugro.com

MaterialLab

Report No.: 0165/15/ED/0504

1.3.1 The Project Organisation for Environmental Works is shown in **Appendix B**. The contact person and telephone numbers of key personnel for the captioned project are shown in **Table 1.1**:

Table 1.1 Contact Persons and Telephone Numbers of Key Personnel

Party	Position	Contact Person	Telephone No.	Fax No.
Engineer or Engineer's Representative (AECOM Asia Co. Ltd.)	Chief Resident Engineer	Mr. Michael Tovey	3985 7470	3902 8800
Environmental Project Office / Independent Environmental Checker (Ramboll Environ Hong Kong Limited)	Environmental Project Office Leader	Mr. Y. H. Hui	3547 2133	3465 2899
	Independent Environmental Checker (IEC)	Mr. Raymond Dai	3465 2888	34652899
	Environmental Site Supervisor	Mr. Ray Yan	5181 8165	3465 2899
Contractor (China Harbour Engineering Co. Ltd)	Site Agent	Mr. Paul Pui	9125 0700	2512 0427
	Environmental Officer	Mr. Marko Chan	9427 2879	2512 0427
Environmental Team (Materialab Consultants Limited)	Environmental Team Leader (ETL)	Mr. Arthur Cheng	3565 4115	2450 8032
24-hr Complaint Hotline	--	--	5236 7111	--

1.3.2 The Contract HY/2013/03 has commenced on 10 April 2015. The commencement of construction works and the EM&A programme have commenced on 29 August 2015.

1.4 Construction Programme

1.4.1 The construction programme is provided in **Appendix C**.

1.5 Construction Works Undertaken during the Reporting Period

1.5.1 The construction works of this Contract commenced on 29 August 2015. During this reporting period, the following major site activities were commenced:

- Site Investigation at Portion G;
- Piling at Portion A1, STP, G (Bridge A1 – A5, A7b, A8 & A9);
- Building at Portion A1 & G;
- CUE Construction, Drainage & Sewerage Work, Radiation Screen Wall and Sign Gantry Footing at Portion B;
- Bridge Construction, High Mast Lighting Foundation, Pumping Station & Box Culvert D at Portion G; and
- Marine sediment excavation activities from the land-based works and corresponding disposal at the designated disposal sites within Hong Kong as allocated by the Marine Fill Committee.

Report No.: 0165/15/ED/0504

2. AIR QUALITY MONITORING

2.1 Monitoring Locations

2.1.1 The air quality monitoring works for the Contract are covered by Contract No. HY/2010/02 "Hong Kong-Zhuhai-Macao-Bridge HKBCF – Reclamation Works" and Contract No. HY/2011/03 "Hong Kong-Zhuhai-Macao Bridge Hong Kong Link Road – Section between Scenic Hill and HKBCF". The ET of the Contract or another ET of the HZMB project is required to conduct impact air quality monitoring at AMS6 and AMS7 as part of EM&A programme if these air quality monitoring stations are no longer covered under Contract No. HY/2010/02 and HY/2011/03. **Figure 1** shows the locations of air monitoring stations.

Table 2.1 Air Quality Monitoring Location

Air Monitoring Station	Location
AMS6	Dragonair/CNAC (Group) Building (A80)
AMS7	Hong Kong SkyCity Marriott Hotel

2.2 Monitoring Requirements

2.2.1 The monitoring requirements, equipment, parameters, frequency and duration, methodology, schedule, and meteorological information are described in the monthly EM&A Reports prepared for Contract No. HY/2010/02 and HY/2011/03.

2.2.2 The Action and Limit levels for 1-hr TSP and 24-hr TSP are summarized in **Table 2.2**.

Table 2.2 Action and Limit Levels for Air Quality

Monitoring Station	Action Level ($\mu\text{g}/\text{m}^3$)	Limit Level ($\mu\text{g}/\text{m}^3$)
1 hour TSP		
AMS6	360	500
AMS7	370	
24 hours TSP		
AMS6	173	260
AMS7	183	

2.2.3 The event and action plan is provided in **Appendix D**.

2.2.4 If exceedance(s) at these stations is/are recorded by the ET of the Contract or referred by the other ET under the HZMB project to the Contract, the ET of the Contract will carry out an investigation and findings will be reported in the monthly EM&A Report.

2.3 Monitoring Results

2.3.1 The monitoring results for AMS6 and AMS7 are reported in the monthly EM&A Reports prepared for Contract No. HY/2011/03 and HY/2010/02 respectively.

2.3.2 Summary of Action and Limit Level exceedance of 1-hr TSP level and 24-hr TSP level at AMS6 shall be referred to the monthly EM&A report prepared by Contract No. HY/2011/03.

2.3.3 There was no Action and Limit Level exceedance of 1-hr TSP level and 24-hr TSP level recorded at station AMS7 by the Environmental Team of Contract No. HY/2010/02 during the reporting period.

MATERIALAB CONSULTANTS LIMITED

Room 723 & 725, 7/F, Block B,
Profit Industrial Building,
1-15 Kwai Fung Crescent, Kwai Fong,
Hong Kong.

Tel : (852)-24508238
Fax : (852)-24508032
Email : mcl@fugro.com



Report No.: 0165/15/ED/0504

3. NOISE MONITORING

3.1 Monitoring Locations

3.1.1 The noise monitoring works for the Contract are covered by Contract No. HY/2010/02 "Hong Kong-Zhuhai-Macao Bridge HKBCF – Reclamation Works". The ET of the Contract or another ET of the HZMB project is required to conduct noise monitoring at NMS2 and NMS3B as part of EM&A programme if these monitoring stations are no longer covered under Contract No. HY/2010/02. **Figure 2** shows the locations of noise monitoring stations.

Table 3.1 Construction Noise Monitoring Location

ID No.	Description
NMS2	Seaview Crescent
NMS3B	Site Boundary of Site Office Area at WA2

3.2 Monitoring Requirements

3.2.1 The monitoring requirements, monitoring equipment, monitoring parameters, frequency and duration, monitoring methodology and monitoring schedule are detailed in the monthly EM&A Reports prepared for Contract No. HY/2010/02.

3.2.2 The Action and Limit Levels for construction noise are defined in **Table 3.2**.

Table 3.2 Action and Limit Level for Construction Noise

Monitoring Station	Action Level	Limit Level
For the Time Period 0700-1900 hrs. on Normal Weekdays		
NMS2	When one documented complaint is received	75.0 dB (A) Leq (30 min.)
NMS3B		70.0 dB (A) Leq (30 min.)*

Notes: If works are to be carried out during restricted hours, the conditions stipulated in the construction noise permit issued by the Noise Control Authority have to be followed.

* Reduce to 70 dB(A) for schools and 65 dB(A) during school examination period

3.3 Monitoring Results

3.3.1 The monitoring results for NMS2 and NMS3B are reported in the monthly EM&A Reports prepared for Contract No. HY/2010/02. No noise exceedances were recorded at stations NMS2 and NMS3B by the ET of Contract No. HY/2010/02 during the reporting period.

MATERIALAB CONSULTANTS LIMITED

Room 723 & 725, 7/F, Block B,
Profit Industrial Building,
1-15 Kwai Fung Crescent, Kwai Fong,
Hong Kong.

Tel : (852)-24508238
Fax : (852)-24508032
Email : mcl@fugro.com

Materialab

Report No.: 0165/15/ED/0504

4. WATER QUALITY MONITORING

- 4.1 There was no marine works conducted during the reporting period and therefore, no relevant monitoring result is reported. However, ET of the Contract shall closely monitor on the status of marine works, which shall conduct monitoring when marine works commence in the future.
- 4.2 The ET of the Contract is required to conduct impact water quality monitoring as part of EM&A programme if water quality monitoring is no longer covered by another ET of the HZMB project. The ETL shall review and obtain IEC, ENPO and EPD agreement on the contract specific water quality monitoring works at least a month before the commencement of any marine works.

MATERIALAB CONSULTANTS LIMITED

Room 723 & 725, 7/F, Block B,
Profit Industrial Building,
1-15 Kwai Fung Crescent, Kwai Fong,
Hong Kong.

Tel : (852)-24508238
Fax : (852)-24508032
Email : mcl@fugro.com

Materialab

Report No.: 0165/15/ED/0504

5. ECOLOGY MONITORING

- 5.1 There was no marine works conducted which impacted to the ecology during the reporting period and therefore, no relevant monitoring result is reported. However, ET of the Contract shall closely monitor on the status of marine works, which shall conduct monitoring when marine works commence in the future.
- 5.2 The ET of the Contract is required to conduct ecology monitoring as part of EM&A programme if ecology monitoring is no longer covered by another ET of the HZMB project. The ETL shall review and obtain IEC, ENPO, AFCD and EPD agreement on the contract specific marine ecology monitoring works at least a month before the commencement of any marine works.

Report No.: 0165/15/ED/0504

6. DISPOSAL OF MARINE SEDIMENT EXTRACTED FROM BORED PILING WORKS

6.1 Background

6.1.1 After the acceptance of the review of the approved Sediment Quality Report (SQR) for this Project under EPD letter dated 19 August 2015, an approval to dispose the marine sediment extracted from bored piling for this Project was then approved under memo from Secretary, Marine Fill Committee of CEDD dated 20 August 2015 for the disposal of marine sediment extracted from bored piling works. The disposal sites allocated to this Project are the Mud Pit CMP2 of the Confined Marine Sediment Disposal Facility to the South of The Brothers (or at the East of Sha Chau). As advised by CEDD in the memo dated 19 February 2016, from 00:00 on 22 March 2016 onward, the disposal space at CMP2 of the South of The Brothers is closed and all disposal of contaminated sediment is to be carried out at CMP Vd to the East of Sha Chau (ESC).

6.1.2 No extracted marine sediment was treated using cement solidification/stabilisation (Cement S/S) techniques under Contract No. HY/2013/03 during this reporting period. The marine sediment extracted from this Contract was disposed to the MFC allocated disposal sites directly without treatment during this reporting period. As a practical means, the disposal operation is managed by one contractor who is also responsible for applying dumping permit and its subsequent extension applications from EPD. Contract No. HY/2013/03 has been assigned to coordinate and arrange for disposal of extracted marine sediment from all three Contracts (Contract Nos. HY/2013/02, HY/2013/03 and HY/2013/04).

6.2 Dumping Arrangements

6.2.1 The barge for disposal of marine sediment was morn at the temporary loading and unloading at the east shore of the HKBCF Island, which has been being used by reclamation contractor (Contract No. HY/2010/02) for reclamation activities. In terms of safety consideration and to avoid mixing of sediment between contracts, each dumping date was allocated to one Contract. The quantity of marine sediment disposed on each date was from one Contract.

6.2.2 During dumping, Contractor of Contract No. HY/2013/03 is responsible for transporting the marine sediment from the site area of Contract No. HY/2013/03 to the barge. The estimated quantity of marine sediment in each truck is confirmed by Resident Site Staff of Contract Nos. HY/2013/02, HY/2013/03 and HY/2013/04. The trip tickets for transportation and disposal of marine sediment are collected and checked. Contract No. HY/2013/03 as the dumping permit holder is responsible for reporting to EPD the quantity disposed of as the condition stipulated in the dumping permit. The disposal site allocated to this Project is the Mud Pit CMP Vd of the Confined Marine Sediment Disposal Facility to the East of Sha Chau (ESC) during this reporting period.

6.3 Quantity Disposed

6.3.1 Marine sediment extracted from bored piling from this Contract was disposed to allocated dumping site in June 2016. The summary of marine sediment disposed up to end June 2016 is shown in the following table:

MATERIALAB CONSULTANTS LIMITED

Room 723 & 725, 7/F, Block B,
Profit Industrial Building,
1-15 Kwai Fung Crescent, Kwai Fong,
Hong Kong.

Tel : (852)-24508238
Fax : (852)-24508032
Email : mcl@fugro.com

Materialab

Report No.: 0165/15/ED/0504

Table 6.1 Summary of Marine Sediment Disposed to Dumping Site

Month/Year	Quantity disposed (in '000m ³)			Total
	HY/2013/02	HY/2013/03	HY/2013/04	
Jan 2016	1.272	1.950	0.800	4.022
Feb 2016	2.816	2.328	0.704	5.848
Mar 2016	0.600	2.464	3.942	7.006
Apr 2016	5.128	5.602	5.028	15.758
May 2016	0.000	0.000	0.000	0.000
Jun 2016	1.200	4.584	1.578	7.362
Total	11.016	16.928	12.052	39.996

Report No.: 0165/15/ED/0504

7. ENVIRONMENTAL SITE INSPECTION AND AUDIT**7.1 Site Inspection**

- 7.1.1 Site audits were carried out by ET on weekly basis to monitor the implementation of proper environmental management practices and mitigation measures in the Project site.
- 7.1.2 The joint site audits were conducted on 03, 10, 17, 24 and 30 June 2016 by the representatives of Engineer, Contractor, ET and IEC (IEC for 24 June 2016).
- 7.1.3 Particular observations during the site inspection and corrective actions undertaken by the Contractor are described below:

13 May 2016

1. CHEC was reminded to remove the stagnant water accumulated at CUE works area. Subsequently, stagnant water was removed at CUE works area. The observation was closed on 03 June 2016.
2. CHEC was reminded to remove the stagnant water accumulated at Portion A1. Subsequently, stagnant water was removed at Portion A1. The observation was closed on 03 June 2016.
3. CHEC was reminded to maintain housekeeping practice at CUE works area. Subsequently, housekeeping practice was maintained at CUE works area. The observation was closed on 03 June 2016.

20 May 2016

1. CHEC was reminded to remove the stagnant water accumulated at the drip tray for chemical container at CUE works area. Subsequently, stagnant water was removed at the drip tray for chemical container at CUE works area. The observation was closed on 03 June 2016.
2. CHEC was reminded to remove the stagnant water accumulated at the drip tray for generator at Portion G. Subsequently, stagnant water was removed at the drip tray for generator at Portion G. The observation was closed on 03 June 2016.
3. CHEC was reminded to separate the excavated marine sediment properly at Portion G from other fill to avoid further contamination. Subsequently, the excavated marine sediment was removed at Portion G. The observation was closed on 03 June 2016.

27 May 2016

1. CHEC is reminded to remove stagnant water at CUE. Subsequently, stagnant water was removed at CUE works area. The observation was closed on 03 June 2016.

03 June 2016

1. CHEC was reminded to increase watering for dust suppression at haul roads on site. Subsequently, watering was increased for dust suppression at haul roads on site. The observation was closed on 03 June 2016.

10 June 2016

1. CHEC was reminded to increase watering for dust suppression at haul roads on site. Subsequently, watering was increased for dust suppression at haul roads on site. The observation was closed on 17 June 2016.

17 June 2016

1. CHEC was reminded to clear the stagnant water accumulated at the concreted area of Portion A1. Subsequently, stagnant water was cleared at the concreted area of Portion A1. The observation was closed on 24 June 2016.

Report No.: 0165/15/ED/0504

24 June 2016

1. CHEC was reminded to increase watering for dust suppression at haul roads in general. Subsequently, watering was increased for dust suppression at haul roads in general. The observation was closed on 24 June 2016.
2. CHEC was reminded to enhance watering for dusty activities at Portion G. Subsequently, watering was enhanced for dusty activities at Portion G. The observation was closed on 24 June 2016.

30 June 2016

1. CHEC is reminded to remove stagnant water at CUE. Follow-up actions for outstanding observation will be checked in the upcoming site inspections and reported in the coming reporting period.

7.2 Advice on the Solid and Liquid Waste Management Status

- 7.2.1 The Contractor registered as a chemical waste producer for the Contract. Sufficient numbers of receptacles were available for general refuse collection and sorting.
- 7.2.2 The monthly summary of waste flow table is detailed in **Appendix E**.
- 7.2.3 4.584 (in'000m³) of excavated marine sediment (from Contract No. HY/2013/03), 0.244 (in'000m³) of Inert C & D Wastes and 0.322 (in'000m³) of Non-inert C & D Wastes were generated in this reporting period.
- 7.2.4 The excavated marine mud from the land-based works was disposed of at the designated disposal sites within Hong Kong as allocated by the Marine Fill Committee. The Contractor shall ensure no spilling and overflowing of materials during loading / unloading / transportation is allowed.
- 7.2.5 The Contractor was reminded that chemical waste containers should be properly treated and stored temporarily in designated chemical waste storage area on site in accordance with the Code of Practice on the Packing, Labelling and Storage of Chemical Waste.

7.3 Environmental Licenses and Permits

- 7.3.1 The valid environmental licenses and permits during the reporting period are summarized in **Appendix F**.

7.4 Implementation Status of Environmental Mitigation Measures

- 7.4.1 In response to the site audit findings, the Contractor carried out corrective actions.
- 7.4.2 A summary of the Implementation Schedule of Environmental Mitigation Measures (EMIS) is presented in **Appendix G**. All necessary mitigation measures at this stage of works were implemented properly.
- 7.4.3 Implementation status of Regular Marine Travel Route Plan (RMTRP) was checked by ET. Training of marine travel route for marine vessels operator was given to relevant staff and relevant records were kept properly. The marine traffic records and geographical plots of all the vessels tracks to demonstrate the conformance of the vessel to the proposed route in June 2016 were provided to ER, ETL, IEC/ENPO for checking within the month of July 2016.

Report No.: 0165/15/ED/0504

7.4.4 With respect to condition 3.26A of EP-353/2009/K approved by EPD on 11 April 2016, the numbers and operating periods of floating grout production facilities and floating concrete batching plants on-site to review on the compliance to this EP condition were checked. Under Contract No. HY/2013/03, one floating concrete batching plant was operated on-site during the reporting period.

7.5 Summary of Exceedance of the Environmental Quality Performance Limit

7.5.1 Summary of Action and Limit Level exceedance of 1-hr TSP level and 24-hr TSP level at AMS6 shall be referred to the monthly EM&A report prepared by Contract No. HY/2011/03.

7.5.2 There was no Action and Limit Level exceedance of 1-hr TSP level and 24-hr TSP level recorded at station AMS7 by the Environmental Team of Contract No. HY/2010/02 during the reporting period.

7.5.3 There was no Action and Limit Level exceedance for noise recorded at station NMS2 and station NMS3B by the Environmental Team of Contract No. HY/2010/02 during the reporting period.

7.5.4 There was no marine works conducted during the reporting period and therefore, no relevant monitoring result is reported.

7.5.5 There was no marine works conducted during the reporting period and therefore, no ecology monitoring result is reported.

7.6 Summary of Complaints, Notification of Summons and Successful Prosecution

7.6.1 There were no complaints received in relation to the environmental impact during the reporting period. The details of cumulative statistics of Environmental Complaints are provided in **Appendix H**.

7.6.2 There was no notification for summons or prosecutions received in relation to the environmental impact during this reporting period.

7.6.3 Statistics on environmental complaints, notifications of summons and successful prosecutions are provided in **Appendix H**.

MATERIALAB CONSULTANTS LIMITED

Room 723 & 725, 7/F, Block B,
Profit Industrial Building,
1-15 Kwai Fung Crescent, Kwai Fong,
Hong Kong.

Tel : (852)-24508238
Fax : (852)-24508032
Email : mcl@fugro.com

The logo for MaterialLab, featuring the word "MaterialLab" in a bold, sans-serif font. The text is white and is set against a black rectangular background that has a horizontal bar above and below it.

Report No.: 0165/15/ED/0504

8. FUTURE KEY ISSUES

8.1 Construction Programme for the Coming Months

8.1.1 As informed by the Contractor, the following are the major construction activities anticipated in July 2016:

- Site Investigation at Portion G;
- Piling at Portion A1, STP, G (Bridge A1 – A5, A7b, A8 & A9);
- Building at Portion A1 & G;
- CUE Construction, Drainage & Sewerage Work, Radiation Screen Wall and Sign Gantry Footing at Portion B;
- Bridge Construction, High Mast Lighting Foundation, Pumping Station & Box Culvert D at Portion G; and
- Marine sediment excavation activities from the land-based works and corresponding disposal at the designated disposal sites within Hong Kong as allocated by the Marine Fill Committee.

8.2 Environmental Site Inspection Schedule for the Coming Month

8.2.1 The tentative schedule for weekly site inspections for July 2016 is provided in **Appendix I**.

MATERIALAB CONSULTANTS LIMITED

Room 723 & 725, 7/F, Block B,
Profit Industrial Building,
1-15 Kwai Fung Crescent, Kwai Fong,
Hong Kong.

Tel : (852)-24508238
Fax : (852)-24508032
Email : mcl@fugro.com

The logo for MaterialLab, featuring the word "MaterialLab" in a bold, black, sans-serif font. The text is centered between two thick, horizontal black bars.

Report No.: 0165/15/ED/0504

9. CONCLUSIONS

- 9.1 Commencement of the Contract took place on 10 April 2015. The commencement date for construction works and the EM&A programme of the Contract commenced on 29 August 2015.
- 9.2 Summary of Action and Limit Level exceedance of 1-hr TSP level and 24-hr TSP level at AMS6 shall be referred to the monthly EM&A report prepared by Contract No. HY/2011/03.
- 9.3 There was no Action and Limit Level exceedance of 1-hr TSP level and 24-hr TSP level recorded at station AMS7 by the Environmental Team of Contract No. HY/2010/02 during the reporting period.
- 9.4 There was no Action and Limit Level exceedance for noise recorded at station NMS2 and station NMS3B by the Environmental Team of Contract No. HY/2010/02 during the reporting period.
- 9.5 There was no marine works conducted during the reporting period and therefore, no water quality impact monitoring result is reported.
- 9.6 There was no marine works conducted during the reporting period and therefore, no ecology monitoring result is reported.
- 9.7 Environmental site inspections were carried out on 03, 10, 17, 24 and 30 June 2016. Recommendations on remedial actions were given to the Contractor for the deficiencies identified during the site inspections.
- 9.8 There were no complaints received in relation to the environmental impact during the reporting period.
- 9.9 There were no notifications of summons or prosecutions received during the reporting period.

MATERIALAB CONSULTANTS LIMITED

Room 723 & 725, 7/F, Block B,
Profit Industrial Building,
1-15 Kwai Fung Crescent, Kwai Fong,
Hong Kong.

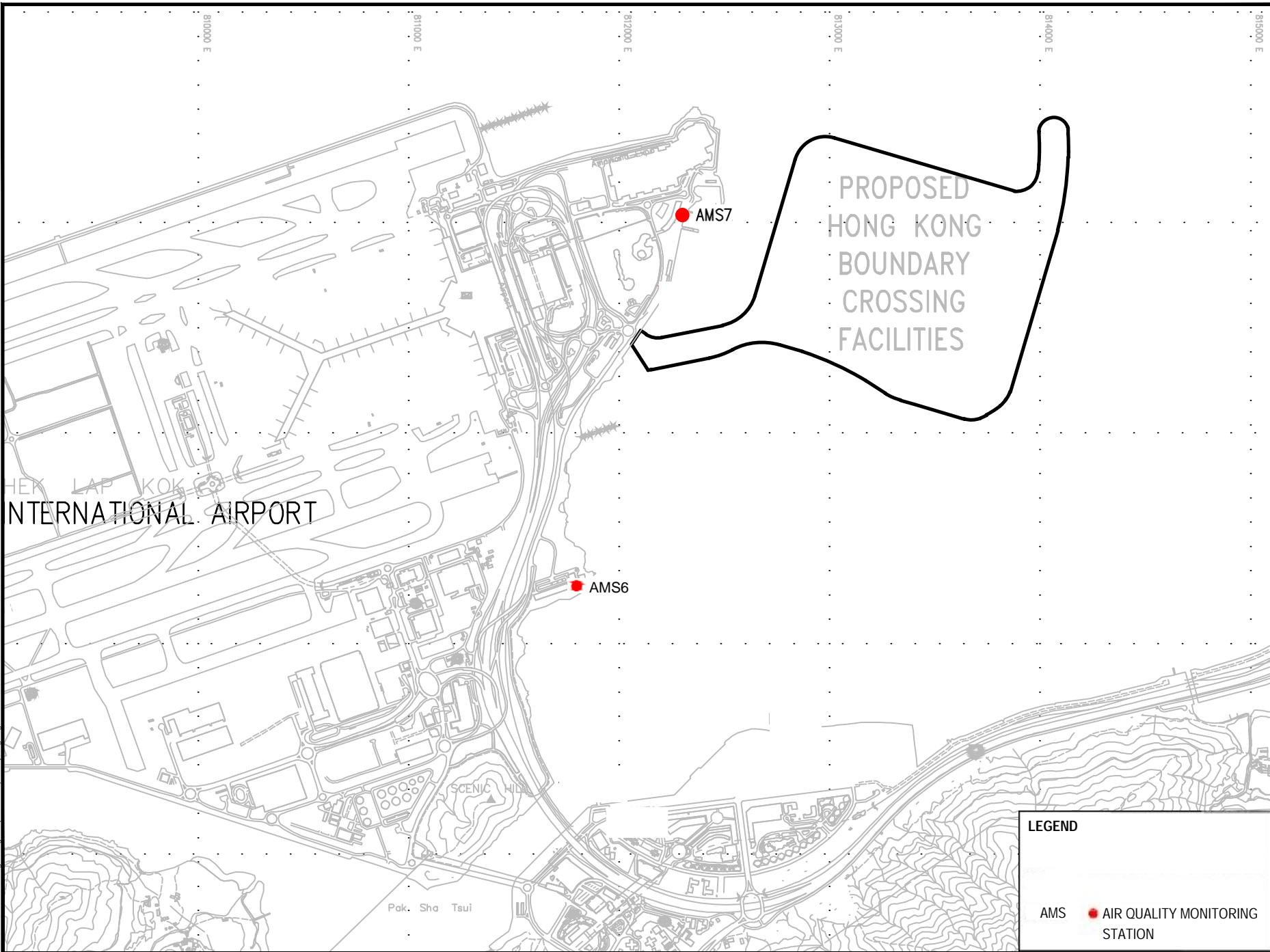
Tel : (852)-24508238
Fax : (852)-24508032
Email : mcl@fugro.com

The logo for MaterialLab, featuring the word "MaterialLab" in a bold, sans-serif font. The text is centered between two thick, horizontal black bars.

Report No.: 0165/15/ED/0504

Figure 1

Air Quality Monitoring Stations



LEGEND

AMS ● AIR QUALITY MONITORING STATION

MATERIALAB CONSULTANTS LIMITED

Room 723 & 725, 7/F, Block B,

Profit Industrial Building,

1-15 Kwai Fung Crescent, Kwai Fong,
Hong Kong.

Tel : (852)-24508238

Fax : (852)-24508032

Email : mcl@fugro.com

MaterialLab

Report No.: 0165/15/ED/0504

Figure 2

Noise Monitoring Stations

MATERIALAB CONSULTANTS LIMITED

Room 723 & 725, 7/F, Block B,

Profit Industrial Building,

1-15 Kwai Fung Crescent, Kwai Fong,
Hong Kong.

Tel : (852)-24508238

Fax : (852)-24508032

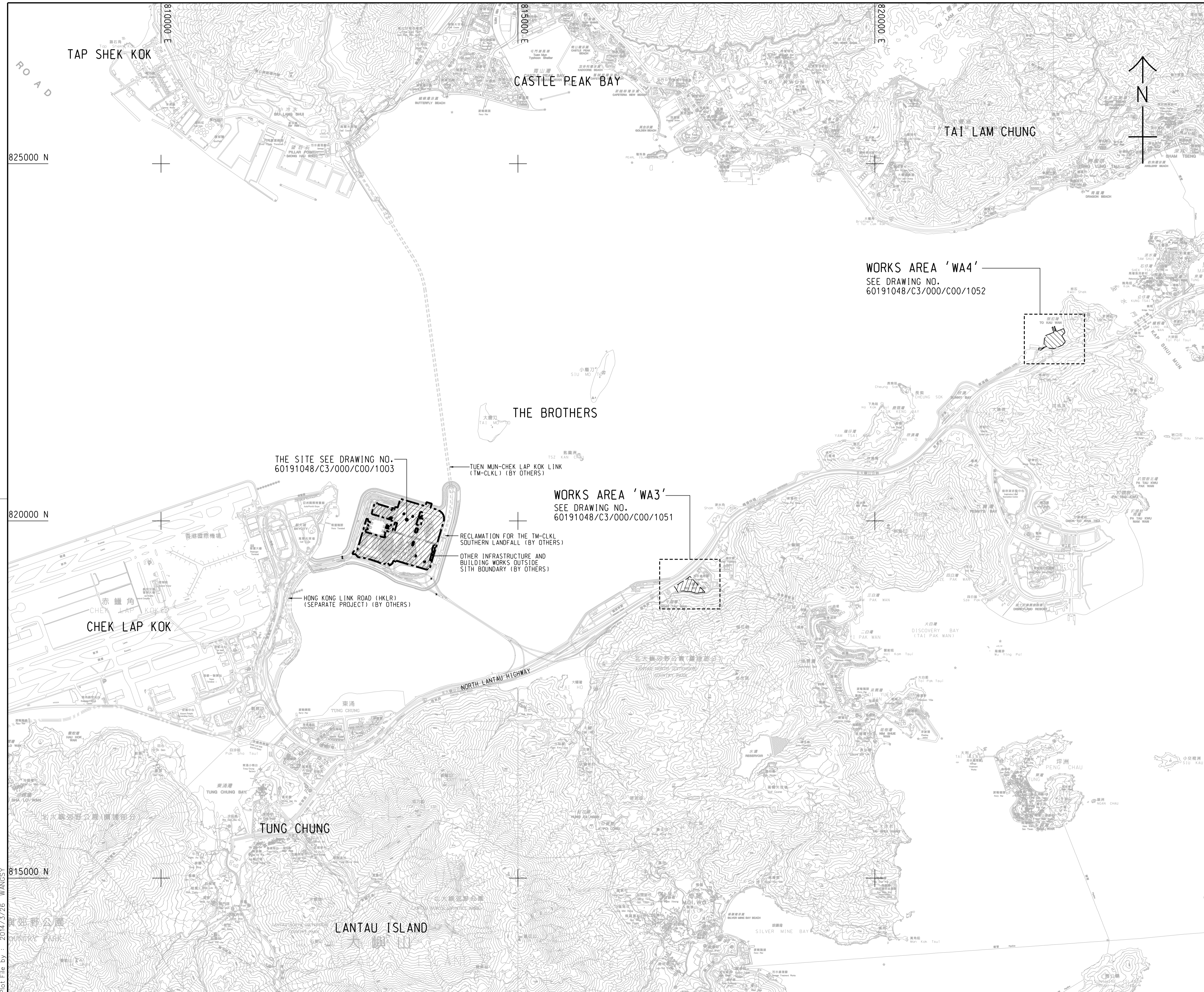
Email : mcl@fugro.com

MaterialLab

Report No.: 0165/15/ED/0504

Appendix A

Location of Works Areas



- NOTES:**
- COORDINATES ARE RELATED TO HONG KONG METRIC GRID (1980).
 - DIMENSIONS ARE IN MILLIMETER AND CHAINAGE ARE IN METRES UNLESS OTHERWISE SHOWN.
 - THIS DRAWING SHALL BE READ IN CONJUNCTION WITH DRAWING NOS. 60191048/C3/000/C00/1051 TO 1053.

LEGEND:

- SITE BOUNDARY
- WORKS AREA

THE SITE SEE DRAWING NO. 60191048/C3/000/C00/1003

TUEN MUN-CHEK LAP KOK LINK (TM-CKLK) (BY OTHERS)

WORKS AREA 'WA3'
SEE DRAWING NO. 60191048/C3/000/C00/1051

RECLAMATION FOR THE TM-CKLK SOUTHERN LANDFALL (BY OTHERS)
OTHER INFRASTRUCTURE AND BUILDING WORKS OUTSIDE SITE BOUNDARY (BY OTHERS)

HONG KONG LINK ROAD (HKLR) (SEPARATE PROJECT) (BY OTHERS)

WORKS AREA 'WA4'
SEE DRAWING NO. 60191048/C3/000/C00/1052

- TENDER DRAWING		BSC	SCI	MAR. 14
REV. 修改	DESCRIPTION 內容摘要	D.C. 審核	C.C. 校對	DATE 日期

路政署 HIGHWAYS DEPARTMENT
港珠澳大橋香港工程管理處
Hong Kong - Zhuhai - Macao Bridge Hong Kong Project Management Office

HONG KONG-ZHUHAI-MACAO BRIDGE
HONG KONG BOUNDARY CROSSING FACILITIES
- VEHICLE CLEARANCE PLAZAS AND
ANCILLARY BUILDINGS AND FACILITIES

SITE LOCATION PLAN

AECOM + +
Rogers Stirk Harbour + Partners
BURO HAPPOLD ATKINS ADI + +
Aedas

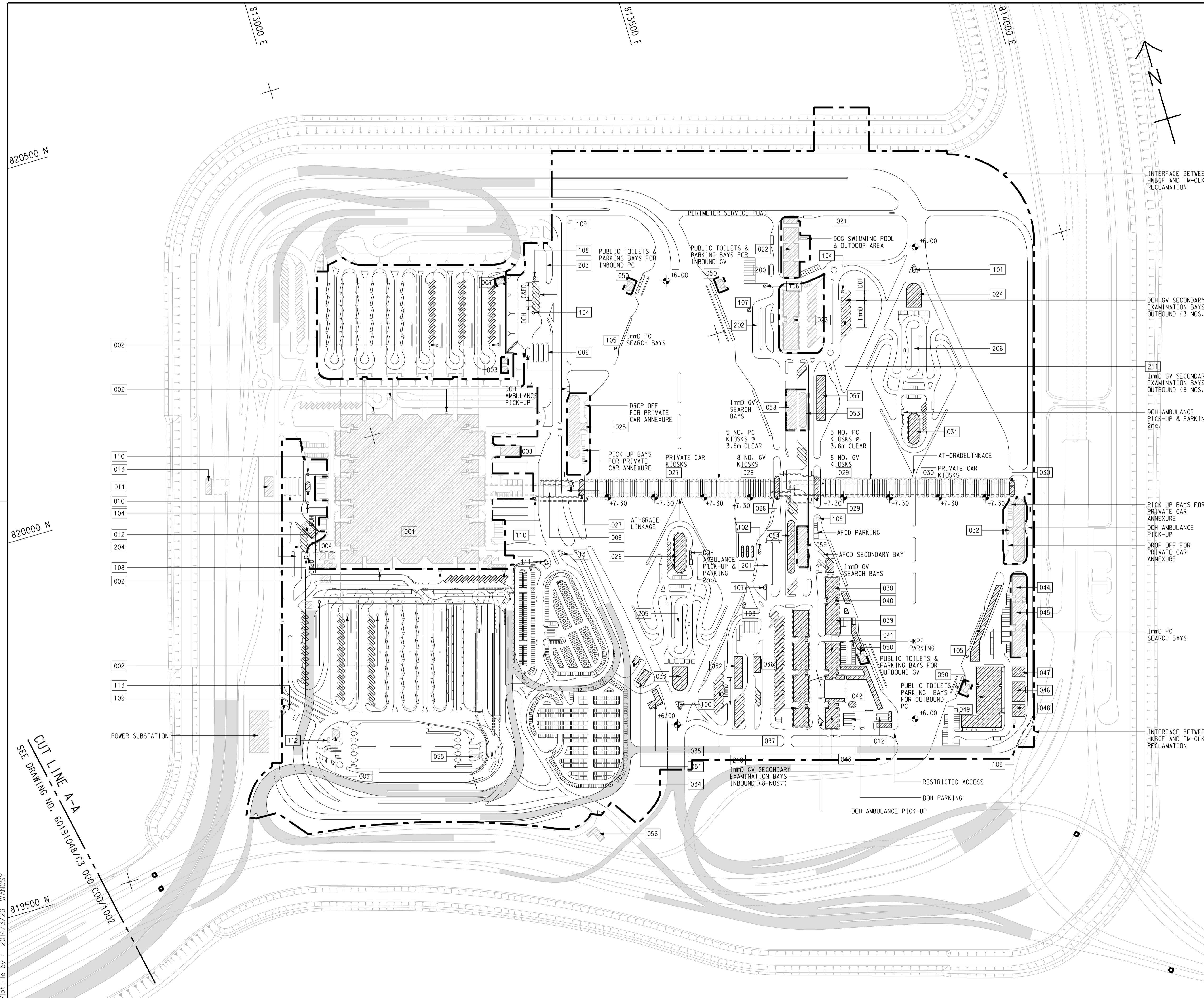
DRG. NO. 60191048/C3/000/C00/1000
圖紙編號

DESIGNED BY 設計	CONTRACT NO. 合約編號	P. Dir. APPROVED 批准人
BWCW	HY/2013/03	TKH

DRAWN BY 繪圖	STATUS 階段
WSY	

SCALE 比例 A1 1 : 25000
DIMENSIONS ARE IN 尺寸單位 METRES
© COPYRIGHT RESERVED 版權所有

Plot File by : 2014/3/26 WANGSY



NOTE:
1. THIS DRAWING TO BE READ IN CONJUNCTION WITH DRAWING NO. 60191048/C3/000/C00/1003.

LEGEND:

- SITE BOUNDARY
- VIADUCT
- BUILDING/FACILITIES

INTERFACE BETWEEN HKBCF AND TM-CLKL RECLAMATION

DOH GV SECONDARY EXAMINATION BAYS OUTBOUND (3 NOS.)

1mm0 GV SECONDARY EXAMINATION BAYS OUTBOUND (8 NOS.)

DOH AMBULANCE PICK-UP & PARKING 2no.

PICK UP BAYS FOR PRIVATE CAR ANNEXURE
DOH AMBULANCE PICK-UP
DROP OFF FOR PRIVATE CAR ANNEXURE

1mm0 PC SEARCH BAYS

INTERFACE BETWEEN HKBCF AND TM-CLKL RECLAMATION

- TENDER DRAWING		BWC SCI	MAR. 14
REV. 修改	DESCRIPTION 內容摘要	D.C. 校核	DATE 日期

路政署
HIGHWAYS DEPARTMENT
港珠澳大橋香港工程管理處
Hong Kong - Zhuhai - Macao Bridge Hong Kong Project Management Office

HONG KONG-ZHUHAI-MACAO BRIDGE
HONG KONG BOUNDARY CROSSING FACILITIES
VEHICLE CLEARANCE PLAZAS AND
ANCILLARY BUILDINGS AND FACILITIES

Figure 1-1
Current Layout Plan

SHEET 1 OF 2

AECOM + **Aedas**
Rogers Stirk Harbour + Partners
BURO HAPPOLD ATKINS ADI +

DRG. NO. 60191048/C3/000/C00/1001
圖紙編號

DESIGNED BY 設計 BWC CONTRACT NO. 合約編號 HY/2013/03 P. DIR. APPROVED 批准人 TKH

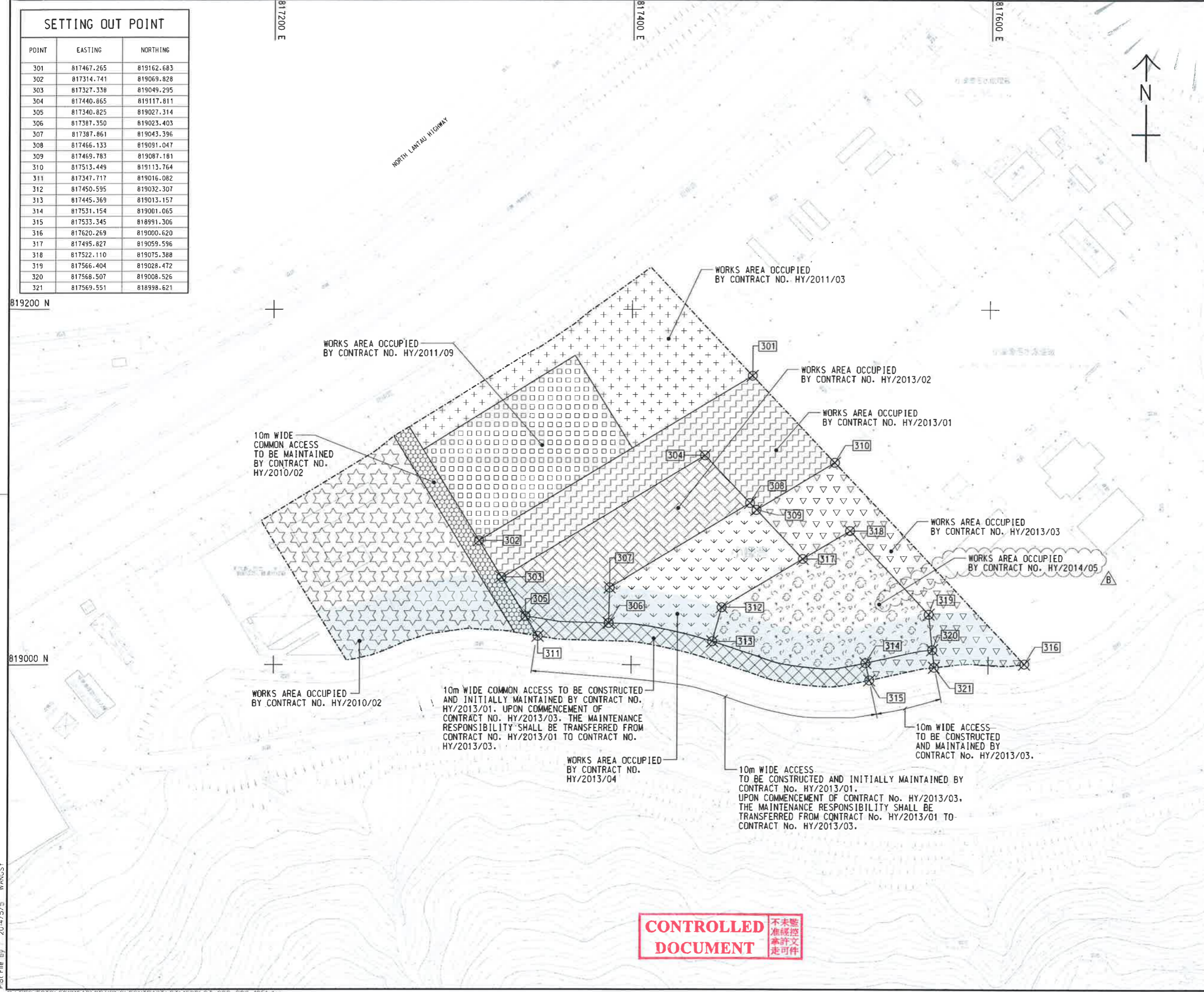
DRAWN BY 繪圖 WSY STATUS 階段
SCALE 比例 A1 1 : 2500

DIMENSIONS ARE IN 尺寸單位 METRES © COPYRIGHT RESERVED 版權所 有

CUT LINE A-A
SEE DRAWING NO. 60191048/C3/000/C00/1002

Plot File by : 2014/3/26 WANGSY

SETTING OUT POINT		
POINT	EASTING	NORTHING
301	817467.265	819162.683
302	817314.741	819069.828
303	817327.338	819049.295
304	817440.865	819117.811
305	817340.825	819027.314
306	817387.350	819023.403
307	817387.861	819043.396
308	817466.133	819091.047
309	817469.783	819087.181
310	817513.449	819113.764
311	817347.717	819016.082
312	817450.595	819032.307
313	817445.369	819013.157
314	817531.154	819001.065
315	817533.345	818991.306
316	817620.269	819000.620
317	817495.827	819059.596
318	817522.110	819075.388
319	817566.404	819028.472
320	817568.507	819008.526
321	817569.551	818998.621



LOCATION PLAN
SCALE 1 : 25000

- NOTES:
- COORDINATES ARE RELATED TO HONG KONG METRIC GRID (1980).
 - DIMENSIONS ARE IN MILLIMETER AND CHAINAGE ARE IN METRES UNLESS OTHERWISE SHOWN.

LEGEND:

	WORKS AREA BOUNDARY
	PORTION 3.1
	PORTION 3.2
	PORTION 3.3
	PORTION 3.4
	PORTION 3.5
	PORTION 3.6
	PORTION 3.7
	PORTION 3.8
	PORTION 3.9
	PORTION 3.10
	NON-BUILDING AREA 8200m ² (WHOLE)

FOR CONSTRUCTION

C	WORKING DRAWING	BWCW SCI	MAY. 15
B	TENDER ADDENDUM NO. 2	BWCW SCI	MAY. 14
A	TENDER ADDENDUM NO. 1	BWCW SCI	APR. 14
-	TENDER DRAWING	BWCW SCI	MAR. 14
REV. NO.	DESCRIPTION	REV. BY	DATE

HONG KONG HIGHWAYS DEPARTMENT
 香港特別行政區交通事務局
 港珠澳大橋香港工程管理局
 Hong Kong - Zhuhai - Macao Bridge Hong Kong Project Management Office

HONG KONG-ZHUHAI-MACAO BRIDGE
 HONG KONG BOUNDARY CROSSING FACILITIES
 - VEHICLE CLEARANCE PLAZAS AND
 ANCILLARY BUILDINGS AND FACILITIES

WORKS AREA WA3

AECOM +
 Rogers Stirk Harbour + Partners
 BURO HAPPOLD ATKINS ADI +
Aedas

DRG. NO. 圖紙編號: 60191048/C3/000/C00/1051C

DESIGNED BY 設計: BWCW	CONTRACT NO. 合約編號: HY/2013/03	A. Dir. APPROVED 核准人: TKH
DRAWN BY 繪圖: WSY	STATUS 狀態: WJ	WORKING DRAWING
SCALE 比例: A1 1 : 1000	© COPYRIGHT RESERVED 版權所有	

CONTROLLED DOCUMENT 不准未經核准修改
 不准未經核准修改
 不准未經核准修改

Plot File by 2014/5/5 WANGSY

SETTING OUT POINT

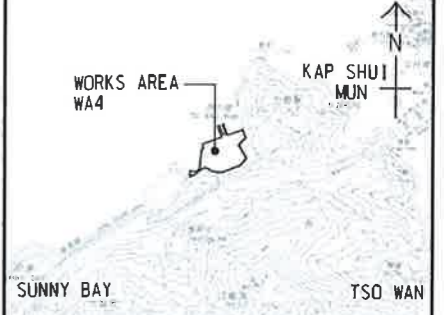
POINT	EASTING	NORTHING
401	822488.151	822632.315
402	822640.593	822689.415
403	822515.608	822559.848
404	822610.940	822599.642
405	822629.428	822607.359
406	822526.988	822529.813
407	822618.348	822567.950
408	822542.232	822489.581
409	822584.983	822507.426
410	822606.866	822516.561
411	822560.278	822441.956
412	822602.949	822460.010
413	822621.914	822467.959
414	822624.130	822470.998
415	822651.725	822508.856
416	822644.758	822521.192

822600 N

822400 N

822400 E

822600 E



LOCATION PLAN
SCALE 1 : 25000

NOTES:

- COORDINATES ARE RELATED TO HONG KONG METRIC GRID (1980).
- DIMENSIONS ARE IN MILLIMETER AND CHAINAGE ARE IN METRES UNLESS OTHERWISE SHOWN.

LEGEND:

- WORKS AREA BOUNDARY
- PORTION 4.1
- PORTION 4.2
- PORTION 4.3
- PORTION 4.4
- PORTION 4.5
- PORTION 4.6
- PORTION 4.7
- PORTION 4.8
- PORTION 4.9

CONTROLLED DOCUMENT

FOR CONSTRUCTION

REV. NO.	DESCRIPTION	DATE	BY	CHECKED	DATE
C	WORKING DRAWING	2014.05.15	BWCW	SCI	MAY.15
B	TENDER ADDENDUM NO. 2	2014.05.14	BWCW	SCI	MAY.14
A	TENDER ADDENDUM NO. 1	2014.04.14	BWCW	SCI	APR.14
-	TENDER DRAWING	2014.03.14	BWCW	SCI	MAR.14

HONG KONG HIGHWAYS DEPARTMENT
港珠澳大橋香港工程管理局
Hong Kong - Zhuhai - Macao Bridge Hong Kong Project Management Office

HONG KONG-ZHUHAI-MACAO BRIDGE
HONG KONG BOUNDARY CROSSING FACILITIES
- VEHICLE CLEARANCE PLAZAS AND ANCILLARY BUILDINGS AND FACILITIES

WORKS AREA WA4

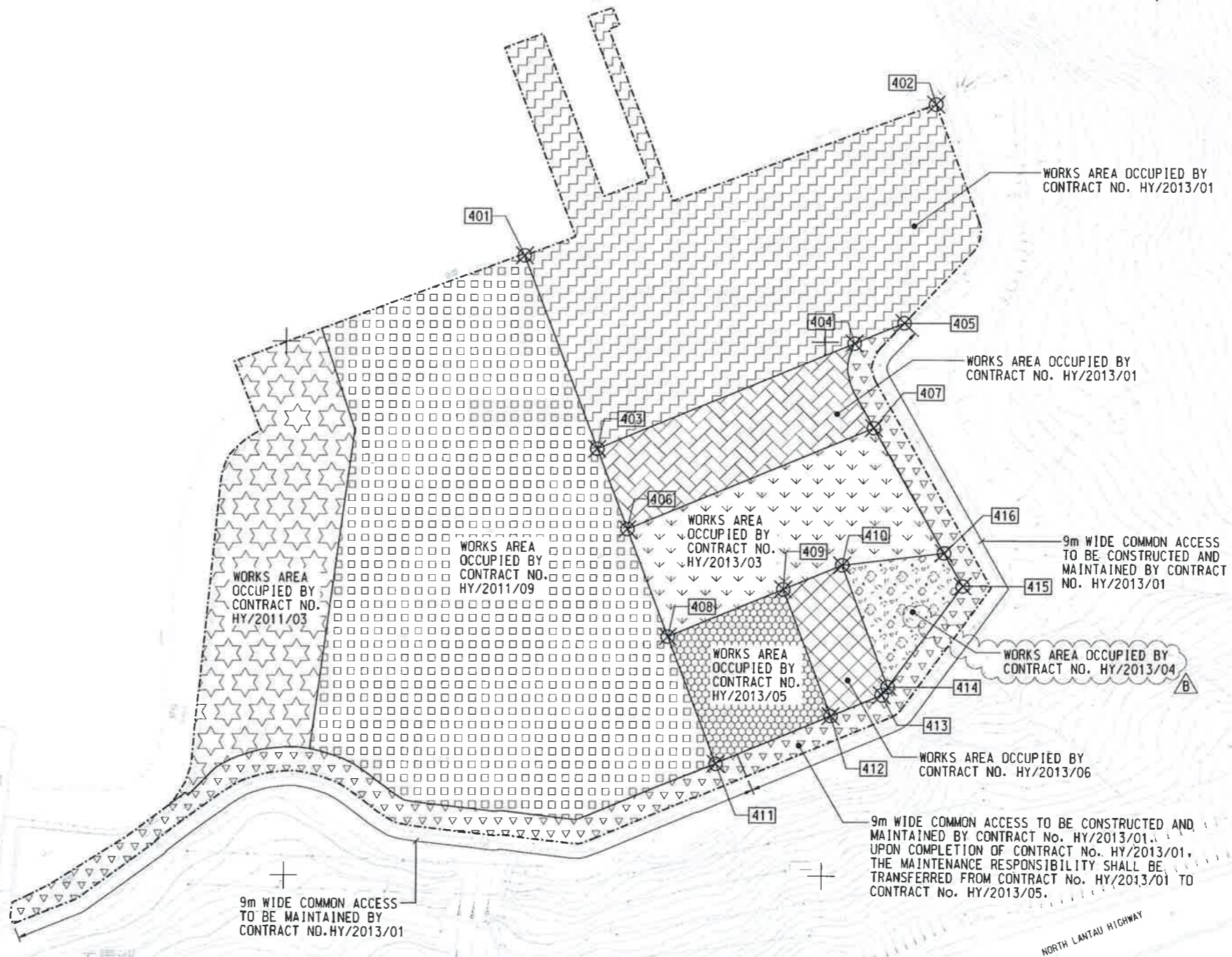
AECOM Aedas
Rogers Stirk Harbour + Partners
BURO HAPPOLD ATKINS ADI

DRG. NO. 圖紙編號: 60191048/C3/000/C00/1052C

DESIGNED BY: BWCW CONTRACT NO.: HY/2013/03
DRAWN BY: WSY STATUS: WORKING DRAWING
SCALE: 1:1000

DIMENSIONS ARE IN METRES
COPYRIGHT RESERVED

Plot File by: 2014/5/5 WANGSY



大靑洲

NORTH LANTAU HIGHWAY

MATERIALAB CONSULTANTS LIMITED

Room 723 & 725, 7/F, Block B,
Profit Industrial Building,
1-15 Kwai Fung Crescent, Kwai Fong,
Hong Kong.

Tel : (852)-24508238
Fax : (852)-24508032
Email : mcl@fugro.com

The logo for MaterialLab, featuring the word "MaterialLab" in a bold, sans-serif font. The text is centered between two thick, horizontal black bars.

Report No.: 0165/15/ED/0504

Appendix B

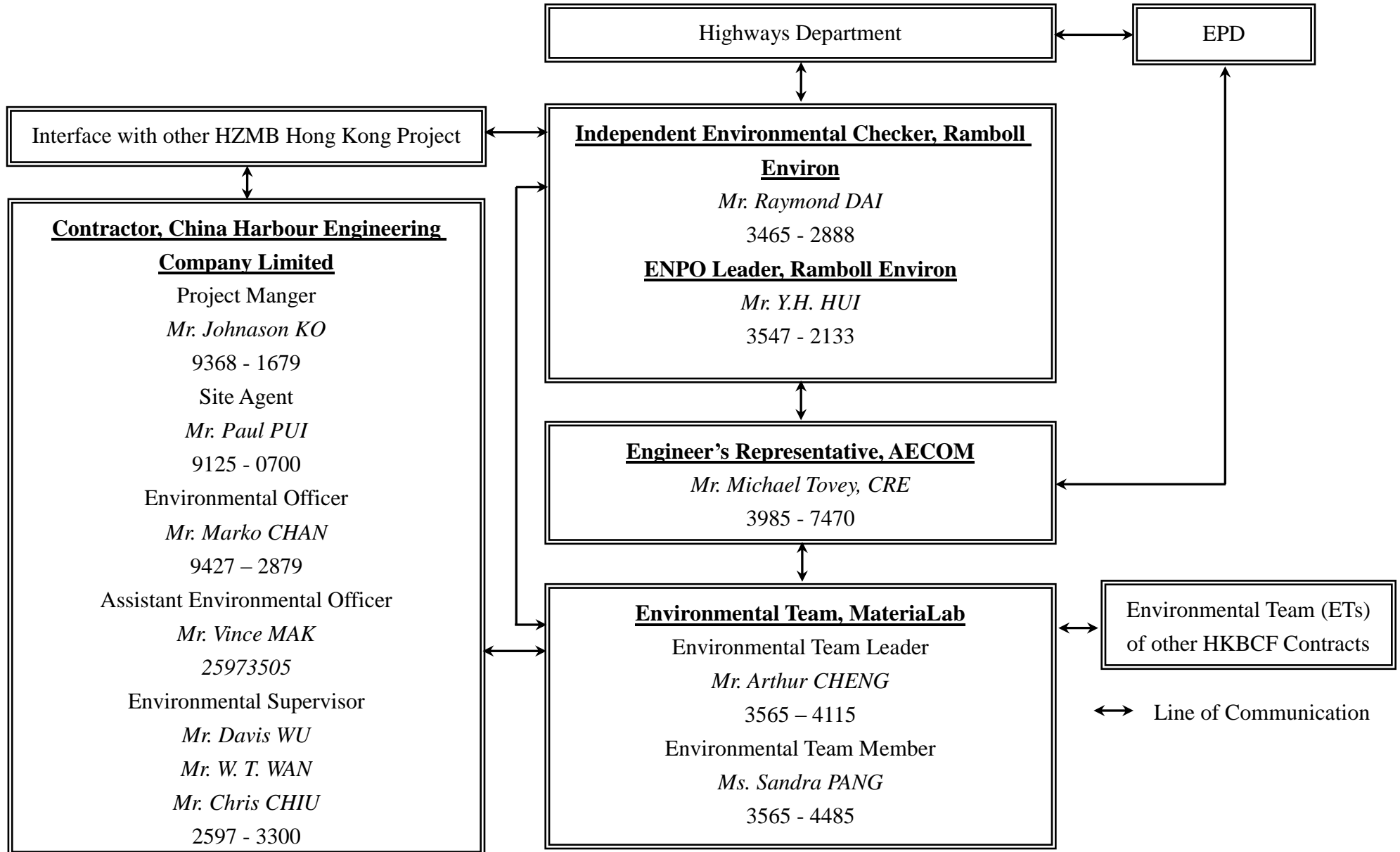
Project Organization for Environmental Works

CHINA HARBOUR ENGINEERING COMPANY LIMITED



Contract No. HY/2013/03 Hong Kong-Zhuhai-Macao Bridge, Hong Kong Boundary Crossing Facilities – Vehicle Clearance Plazas and Ancillary Buildings and Facilities

Projects Organization for Environmental Works



MATERIALAB CONSULTANTS LIMITED

Room 723 & 725, 7/F, Block B,
Profit Industrial Building,
1-15 Kwai Fung Crescent, Kwai Fong,
Hong Kong.

Tel : (852)-24508238
Fax : (852)-24508032
Email : mcl@fugro.com

The logo for MaterialLab, featuring the word "MaterialLab" in a bold, sans-serif font. The text is white and is set against a black background that consists of two thick horizontal bars, one above and one below the text.

Report No.: 0165/15/ED/0504

Appendix C

Construction Programme

Activity ID	Activity Name	Original Duration	Remaining Duration	% Complete	Start	Finish	Total Float	2016				
								Jun	Jul	Aug	Sep	Oct
HKBCF - VCP DRMs Programme, (IWP 04), UD 300616, EOT No. 1												
CONTRACT DATES												
Key Dates												
A1010	KD1 Achievement of Stage 1 of the Works (364.5 days; 08 Apr. 16)	0	0	0%		19-Sep-16*	-164					◆ KD1 Achieveme
A1030	KD3 Achievement of Stage 3A of the Works (382 days; 25 Apr. 16)	0	0	100%		27-Jun-16 A						◆ KD3 Achievement of Stage 3A of the Works (382 days; 25 Apr. 16)
Site Access & Possession												
Possession of Portion of Site												
A0010	Possession of Portion A1 (<= 70 days)	0	0	0%		30-Jun-16*	-377					◆ Possession of Portion A1 (<= 70 days)
A0020	Possession of Portion A2 (<= 75 days)	0	0	0%		30-Jun-16*	-372					◆ Possession of Portion A2 (<= 75 days)
A0030	Possession of Portion B (<=100 days)	0	0	0%		30-Jun-16*	-347					◆ Possession of Portion B (<=100 days)
A0040	Possession of Portion C (<=100 days)	0	0	0%		26-Aug-16*	-405					◆ Possession of Portion C (<=100 da
A0050	Possession of Portion D (<=220 days)	0	0	0%		30-Jun-16*	-227					◆ Possession of Portion D (<=220 days)
A0060	Possession of Portion E (<=160 days)	0	0	0%		30-Jun-16*	-287					◆ Possession of Portion E (<=160 days)
A0080	Possession of Portion G (<=225 days)	0	0	0%		30-Jun-16*	-266					◆ Possession of Portion G (<=225 days)
A0090	Possession of Portion H1 (<=273 days)	0	0	0%		30-Jun-16*	-174					◆ Possession of Portion H1 (<=273 days)
A0100	Possession of Portion H2 (<=273 days)	0	0	0%		30-Jun-16*	-174					◆ Possession of Portion H2 (<=273 days)
A0110	Possession of Portion J (<=320 days)	0	0	0%		01-Jul-16*	-129					◆ Possession of Portion J (<=320 days)
A0120	Possession of Portion K (<=478 days)	0	0	0%		30-Jul-16*	-79					◆ Possession of Portion K (<=478 days)
A0130	Possession of Portion L (<=478 days)	0	0	0%		30-Jul-16*	-12					◆ Possession of Portion L (<=478 days)
A0140	Possession of Portion M (<=478 days)	0	0	0%		30-Jul-16*	-134					◆ Possession of Portion M (<=478 days)
A0150	Possession of Portion N (<=345 days)	0	0	0%		01-Aug-16*	-135					◆ Possession of Portion N (<=345 days)
A0160	Possession of Portion P (<=502 days)	0	0	0%		23-Aug-16*	0					◆ Possession of Portion P (<=502 days)
Access to Locations of the Site												
A0210	Contract Date for Access to Location 1.1 (490 days)	0	0	0%		11-Aug-16*	0					◆ Contract Date for Access to Location 1.1 (490 da
A0220	Contract Date for Access to Location 1.2 (405 days)	0	0	0%		30-Jun-16*	-42					◆ Contract Date for Access to Location 1.2 (405 days)
A0230	Contract Date for Access to Location 1.3 (488 days)	0	0	0%		09-Aug-16*	0					◆ Contract Date for Access to Location 1.3 (488 day
A0240	Contract Date for Access to Location 1.4 (488 days)	0	0	0%		09-Aug-16*	0					◆ Contract Date for Access to Location 1.4 (488 day
A0310	Contract Date for Access to Location 1.8 PCB (Basement level up to ground floor slab) (395 days)	0	0	0%		30-Jun-16*	-52					◆ Contract Date for Access to Location 1.8 PCB (Basement level up to ground floor slab
A0320	Contract Date for Access to Location 1.8 PCB (Ground Floor level or above) (515 days)	0	0	0%		05-Sep-16*	0					◆ Contract Date for Access to
Section/Stage Subject to Excision												
A0790	Contract Date for Section VIII (437 days, latest date when the Engineer may order)	0	0	100%	18-Jun-16 A							◆ Contract Date for Section VIII (437 days, latest date when the Engineer may order)
PRELIMINARY												
Precast Yard for Bridge Segment												
A0620	Engineering Service and Factory Preparation	120	0	100%	01-Dec-15 A	16-Jun-16 A						
A0630	Segment Manufacture	300	285	5%	17-Jun-16 A	16-Jun-17	-86					
PORTION A1												
Portion A1 Structures												
Bridge A9												
Bored Pile												
S91015	Bored piles for P904, A905, 4nos	58	58	0%	30-Jun-16	06-Sep-16	-25					
S91020	Bored piles, 6 nos. (2 cast)	29	19	35%	17-May-16 A	29-Sep-16	-25					
S91030	Pile testing for P904, A905	7	7	0%	22-Sep-16	29-Sep-16	-6					

■ Actual Work
■ Remaining Work
■ Critical
◆ Milestone

THREE MONTH ROLLING PROGRAMME
VEHICLE CLEARANCE PLAZAS AND ANCILLARY BUILDINGS AND FACILITIES
 Page 1 of 14

Date	Revision	Checked	Approved
30-Apr-16	3MRP updated as of 30 Apr. 2016	ZJ	
31-May-16	3MRP updated as of 31 May 2016	ZJ	
30-Jun-16	3MRP updated as of 30 June 2016	ZJ	

Activity ID	Activity Name	Original Duration	Remaining Duration	% Complete	Start	Finish	Total Float	2016				
								Jun	Jul	Aug	Sep	Oct
Box Culvert D												
Bored Pile												
SD0040	Bored Piling for Box Culvert D 45 nr. (41 no. cast)	128	13	90%	05-Oct-15 A	15-Jul-16	-63					
SD0090	Box Culvert D Pile Testing (Stage 2)	7	7	0%	30-Jun-16	08-Jul-16	-63					
SD0130	Box Culvert D Pile Testing (Stage 3)	7	7	0%	19-Sep-16	26-Sep-16	-63					
Box Culvert D Construction												
SD0060	Box Culvert D Construction (Stage 1)	50	50	1%	17-May-16 A	27-Aug-16	94					
SD0070	Box Culvert D Construction (Stage 2)	50	50	0%	09-Jul-16	05-Sep-16	86					
SD0110	Box Culvert D Construction (Stage 3)	50	50	0%	27-Sep-16	25-Nov-16	-56					
047 - Fresh Water Pumping Station, Portion A1 & A2												
A04710	Piling 4nr. (4 cast)	34	0	100%	29-Apr-16 A	30-Jun-16 A						
A04720	Excavation + Blinding	12	12	0%	30-Jun-16	14-Jul-16	-80					
A04730	Pile Testing	7	7	0%	15-Jul-16	22-Jul-16	-80					
A04740	Water Tank Construction	58	58	0%	23-Jul-16	29-Sep-16	-80					
049 - Sewage Treatment Plant, Portion A1 & A2												
A04940	Bored Piling (39 Nr.) (32 Nr. cast)	148	8	94.59%	29-Dec-15 A	09-Jul-16	-174					
A04945	Removal of Surcharge	22	22	0%	11-Jul-16	04-Aug-16	-174					
A04950	Sheet Piling as ELS1 for Equalization Tanks	13	13	0%	05-Aug-16	19-Aug-16	-168					
A04960	Sheet Piling as ELS2 for Sludge Holding Tanks	13	13	0%	05-Aug-16	19-Aug-16	-174					
A04970	Sheet Piling as ELS3 for Basement	25	25	0%	20-Aug-16	19-Sep-16	-168					
A04980	Pile Testing in ELS1	7	7	0%	20-Aug-16	27-Aug-16	-165					
B04910	Pile Testing for others	7	7	0%	20-Aug-16	27-Aug-16	-174					
B04960	ELS1 + Blinding for Equalization Tanks	14	14	0%	29-Aug-16	13-Sep-16	-165					
B04970	Constructing Base Slab for Equalization Tanks	15	15	0%	14-Sep-16	03-Oct-16	-165					
C04930	ELS2 + Blinding for Equalization Tanks	10	10	0%	14-Sep-16	26-Sep-16	-174					
C04940	Constructing Base Slab of Equalization Tanks	20	20	0%	27-Sep-16	21-Oct-16	-109					
D04910	ELS3 w/struts + Blinding for Basement	30	30	0%	27-Sep-16	02-Nov-16	-174					
Portion A1 Buildings												
012 - DOH Disinsection Area and Store Room 1, at Portion A1												
A01210	Excavation & Blinding (+ PL Test)	10	9	10%	30-May-16 A	11-Jul-16	10					
A01220	Raft Foundation	20	20	0%	12-Jul-16	03-Aug-16	10					
A01240	Superstructure	35	35	0%	04-Aug-16	13-Sep-16	10					
A01250	Finishing	80	80	0%	14-Sep-16	19-Dec-16	83					
A01260	BS for Office Accomodation (Stage 8)	73	73	0%	14-Sep-16	10-Dec-16	10					
036 - Weigh Station												
A03640	Finishing	120	48	60%	13-Jan-16 A	25-Aug-16	137					
A03670	BS for Office Accomodation (Stage 8)	90	39	56.67%	13-Jan-16 A	15-Aug-16	98					
A03680	BS + E&M for Office Accomodation (Stage 9)	90	90	0%	16-Aug-16	01-Dec-16	98					
A03690	Other BS + E&M Installation	180	102	43.33%	02-Nov-15 A	31-Oct-16	195					
037 C&ED Tower Cum Inbound Cargo Examination Building (Portion A1 & B)												
A03740	Steel Frame Structure	90	90	0%	30-Jun-16	17-Oct-16	207					
A03750	Finishing	200	190	5%	30-May-16 A	17-Feb-17	107					

- █ Actual Work
- █ Remaining Work
- █ Critical
- ◆ Milestone

Date	Revision	Checked	Approved
30-Apr-16	3MRP updated as of 30 Apr. 2016	ZJ	
31-May-16	3MRP updated as of 31 May 2016	ZJ	
30-Jun-16	3MRP updated as of 30 June 2016	ZJ	

HZMB HK Boundary Crossing Facilities - Vehicle Clearance Plazas and Ancillary Buildings and Facilities

29-Jun-16

Activity ID	Activity Name	Original Duration	Remaining Duration	% Complete	Start	Finish	Total Float	2016				
								Jun	Jul	Aug	Sep	Oct
A03760	BS for Office Accomodation (Stage 8)	88	88	0%	30-Jun-16	14-Oct-16	-117					
A03790	Other BS + E&M Installation	235	201	14.47%	15-Dec-15 A	02-Mar-17	96					
041 Fire Station Cum Ambulance Depot												
A04100	Excavation + Blinding (+ PL Test)	14	14	1%	24-May-16 A	16-Jul-16	-183					
A04110	Substructure	84	84	0%	13-Jun-16 A	08-Oct-16	-183					
042 Drill Tower												
A04250	Super Structure	69	26	62.32%	05-May-16 A	30-Jul-16	-6					
A04260	Finishing	80	80	0%	01-Aug-16	04-Nov-16	-6					
A04270	BS for Office Accomodation (Stage 8)	65	65	0%	01-Aug-16	18-Oct-16	52					
A04290	Other BS + E&M Installation	160	160	0%	20-Aug-16	04-Mar-17	94					
043 DOH Office												
A04340	Super Structure	60	35	41.67%	27-May-16 A	10-Aug-16	49					
A04350	Finishing	120	120	0%	11-Aug-16	04-Jan-17	72					
A04370	BS for Office Accomodation (Stage 8)	69	69	0%	11-Aug-16	02-Nov-16	49					
B04310	Other BS + E&M Installation	170	170	0%	30-Aug-16	25-Mar-17	76					
043 DOH Office (Store Room)												
B04370	Super Structure with Water Tank	51	35	31.37%	27-May-16 A	10-Aug-16	122					
B04380	Finishing	50	50	0%	11-Aug-16	11-Oct-16	122					
052 - Transforms (Zone 4)												
A05235	Energisation by CLP	50	10	80%	24-Feb-16 A	12-Jul-16	233					
A05240	BS Installation (KD9)	66	17	75%	02-Nov-15 A	20-Jul-16	137					
A05250	Finishing (KD10)	87	9	90%	14-Dec-15 A	11-Jul-16	137					
A05260	Completion of remaining works	66	66	0%	20-Jul-16	07-Oct-16	215					
105 IMMD Guard Booth, Portion A1												
B10510	Excavation + Blinding	5	5	0%	12-Jul-16	16-Jul-16	79					
B10520	Substructure (Raft Foundation)	15	15	0%	14-Sep-16	03-Oct-16	29					
External Works for Portion A1												
Drainage Works												
SG0020	Drainage Works (2025m & 94MHs)	250	230	8%	16-Sep-15 A	06-Apr-17	-74					
SG0030	Sewerage (869m & 25MHs)	250	230	8%	04-Jan-16 A	06-Apr-17	-74					
Waterpipe Laying												
SW5010	Fresh Water Main Laying (1660m)	250	250	0%	26-Aug-16	03-Jul-17	-74					
SW6010	Flushing Water Main Laying (967m)	250	250	0%	26-Aug-16	03-Jul-17	-74					
Duct Laying for Utilities/Telecom Cabling, TCSS & Lighting												
SU5260	Duct Laying for Utilities/Telecom Cabling	250	250	0%	26-Aug-16	03-Jul-17	-74					
PORTION A2												
Portion A2 Structures												
048 - Reclaimed Water Pumping Station, Portion A2												

- █ Actual Work
- █ Remaining Work
- █ Critical
- ◆ Milestone

THREE MONTH ROLLING PROGRAMME
VEHICLE CLEARANCE PLAZAS AND ANCILLARY BUILDINGS AND FACILITIES
 Page 3 of 14

Date	Revision	Checked	Approved
30-Apr-16	3MRP updated as of 30 Apr. 2016	ZJ	
31-May-16	3MRP updated as of 31 May 2016	ZJ	
30-Jun-16	3MRP updated as of 30 June 2016	ZJ	

HZMB HK Boundary Crossing Facilities - Vehicle Clearance Plazas and Ancillary Buildings and Facilities

29-Jun-16

Activity ID	Activity Name	Original Duration	Remaining Duration	% Complete	Start	Finish	Total Float	2016				
								Jun	Jul	Aug	Sep	Oct
A04820	Piling 4nr. (4 cast)	40	0	100%	25-Apr-16 A	25-Jun-16 A		█				
A04830	Sheet Piling as ELS for Basement 1	12	12	0%	30-Jun-16	14-Jul-16	-91		█			
A04840	Pile testing	7	7	0%	15-Jul-16	22-Jul-16	-91		█			
A04850	Excavation + Blinding for Basement 1	10	10	0%	23-Jul-16	03-Aug-16	-91			█		
A04860	Basement 1 Construction	40	40	0%	04-Aug-16	20-Sep-16	-91			█		
A04865	Water-tightness Test for Basement 1	12	12	0%	21-Sep-16	05-Oct-16	-91				█	
Retaining Wall W9-2												
S90850	Construction of Retaining Wall W9-2 (U-shape, 6 bay)	120	120	0%	12-Aug-16	05-Jan-17	26				█	
External Works for Portion A2												
Drainage Works												
B00020	Initial Survey	6	6	0%	30-Jun-16	07-Jul-16	-268		█			
PORTION B												
Portion B Structures												
Retaining Wall W6-1												
S62050	Construction of Retaining Wall W6-1 (L-shape, 4 bays)	80	80	0%	29-Aug-16	02-Dec-16	62				█	
027 - Staff Subway												
C02730	Bay 4 - 13 Construction - Wall + Top Slab	30	0	100%	15-Dec-15 A	14-Jun-16 A		█				
C02750	Bay 14-19 Construction - Wall + Top Slab	30	6	80%	17-Feb-16 A	07-Jul-16	-117	█	█			
C02760	Internal Finishes & Cable Containment (KD1)	30	30	0%	30-Jun-16	04-Aug-16	-106		█			
C02770	BS + E&M Installation for ACVSS (Stage 1)	30	30	0%	12-Jul-16	15-Aug-16	-106		█			
028 - Staff Subway												
C02830	Bay 20-24 Construction - Wall + Top Slab	150	150	0%	30-Jun-16	28-Dec-16	-220		█			
C02840	Internal Finishes & Cable Containment (KD1)	30	30	0%	25-Jul-16	27-Aug-16	-125			█		
C02850	BS + E&M Installation for ACVSS (Stage 1)	30	30	0%	03-Aug-16	06-Sep-16	-125			█		
029 - Staff Subway												
C02920	Bay 25-29 Construction - Base Slab	22	13	40%	03-May-16 A	16-Jul-16	-111	█	█			
C02930	Bay 25-29 Construction - Wall + Top Slab	28	28	0%	30-Jun-16	02-Aug-16	-111		█			
C02940	Bay 30-33 Construction - Base Slab	21	21	0%	30-Apr-16 A	25-Jul-16	-111	█	█			
C02950	Bay 30-33 Construction - Wall + Top Slab	27	27	0%	08-Jul-16	08-Aug-16	-117		█			
C02960	Internal Finishes & Cable Containment (KD1)	21	21	0%	27-Jul-16	19-Aug-16	-117			█		
C02970	BS + E&M Installation for ACVSS (Stage 1)	20	20	0%	05-Aug-16	27-Aug-16	-117			█		
Portion B Buildings												
027/028 Inbound Kiosks & 029 Outbound Kiosks												
A02700	Submission & Approval for Steel Works	50	26	48%	01-Apr-16 A	30-Jul-16	-196	█	█			
A02710	Pre-fabrication for the Steel Kiosks	100	100	0%	01-Aug-16	28-Nov-16	-196				█	
027/028 Inbound Kiosks & 029 Outbound Kiosks, Section IX, Subject to Excision												
B02730	Submission & Approval for Steel Works	75	26	65.33%	01-Apr-16 A	30-Jul-16	-69	█	█			
B02740	Pre-fabrication for the Steel Kiosks	100	100	0%	01-Aug-16	28-Nov-16	-69				█	
026 Inbound IMMD and DOH Secondary Screening Building												
A02630	Super Structure	70	78	0%	16-Feb-16 A	30-Sep-16	-60	█	█			

- █ Actual Work
- █ Remaining Work
- █ Critical
- ◆ Milestone

THREE MONTH ROLLING PROGRAMME
VEHICLE CLEARANCE PLAZAS AND ANCILLARY BUILDINGS AND FACILITIES
 Page 4 of 14

Date	Revision	Checked	Approved
30-Apr-16	3MRP updated as of 30 Apr. 2016	ZJ	
31-May-16	3MRP updated as of 31 May 2016	ZJ	
30-Jun-16	3MRP updated as of 30 June 2016	ZJ	

HZMB HK Boundary Crossing Facilities - Vehicle Clearance Plazas and Ancillary Buildings and Facilities

29-Jun-16

Activity ID	Activity Name	Original Duration	Remaining Duration	% Complete	Start	Finish	Total Float	2016						
								Jun	Jul	Aug	Sep	Oct		
A02640	Finishing	75	75	0%	03-Oct-16	31-Dec-16	144							
A02670	BS for Office Accomodation (Stage 8)	90	90	0%	03-Oct-16	19-Jan-17	-31							
A02690	Other BS + E&M Installation	180	171	5%	01-Feb-16 A	23-May-17	32							
054 Inbound Fixed X-ray Building														
A05440	Super Structure for Tx Room	60	26	56.67%	02-Mar-16 A	30-Jul-16	-172							
A05450	Other Superstructure	65	65	0%	01-Aug-16	18-Oct-16	-168							
A05460	Finishing	150	150	0%	01-Aug-16	01-Feb-17	121							
A05465	BS + E&M for Tx Room to CLP (Stage 5)	97	97	0%	01-Aug-16	24-Nov-16	-172							
A05470	BS for Office Accomodation (Stage 8)	90	90	0%	19-Oct-16	07-Feb-17	-44							
A05490	Other BS + E&M Installation	180	171	5%	08-Feb-16 A	08-Jun-17	19							
038 AFCD Office														
A03810	Excavation + Blinding	7	7	0%	27-Jul-16	03-Aug-16	-152							
039 Police Main Building														
A03910	Excavation + Blinding	12	12	0%	30-Jun-16	14-Jul-16	-228							
A03920	Substructure	70	70	0%	15-Jul-16	06-Oct-16	-228							
040 Incident Control Tower														
A04010	Excavation + Blinding	10	10	0%	15-Jul-16	26-Jul-16	-159							
Glass Wall														
C04010	Shop Drawing Submission and Approval	30	30	0%	05-Sep-16	12-Oct-16	-31							
102 HKPF UVSS Monitor Room														
A10220	Super Structure	45	41	10%	20-May-16 A	17-Aug-16	27							
A10230	Finishing (False Ceiling) (KD9)	70	70	0%	17-Aug-16	10-Nov-16	43							
A10240	BS for Office Accomodation (Stage 8)	80	80	0%	17-Aug-16	22-Nov-16	27							
A10270	Other BS + E&M Installation	150	150	0%	05-Sep-16	09-Mar-17	91							
103 Police Inspection Post														
A10310	Excavation + Blinding	5	5	0%	09-Jul-16	14-Jul-16	-5							
HPL Composite Panel Cladding System														
B10310	Shop Drawing Submission and Approval	30	30	0%	23-Aug-16	27-Sep-16	-43							
B10320	Fabrication of HPL Cladding	60	60	0%	28-Sep-16	08-Dec-16	-43							
057 Transformers (Zone 2)														
A05710	Excavation + Blinding	10	10	0%	27-Jun-16 A	12-Jul-16	-280							
A05720	Raft Foundation	52	52	0%	13-Jul-16	10-Sep-16	-280							
A05730	Supersturcture	65	65	0%	12-Sep-16	29-Nov-16	-280							
107 - C&ED Mobile X-ray Operation Office (Cargo), Portion B														
C10710	Excavation + Blinding	7	7	0%	30-Jun-16	08-Jul-16	-94							
C10720	Raft Foundation	32	32	0%	09-Jul-16	15-Aug-16	-94							
C10730	Superstructure (Roof Slabs)	62	62	0%	16-Aug-16	29-Oct-16	-94							
113 - Field Kiosk for Access Control, Portion B														
B11310	Excavation + Blinding	7	7	0%	29-Jun-16 A	08-Jul-16	-97							
B11320	Raft Foundation	32	32	0%	09-Jul-16	15-Aug-16	-97							
B11330	Superstructure (Roof Beams & Slabs)	60	60	0%	16-Aug-16	27-Oct-16	-97							
External Works for Portion B														
Drainage Works														
SG1540	Drainage Works (4397m & 174MHs)	300	225	25%	17-Dec-15 A	30-Mar-17	-135							

- █ Actual Work
- █ Remaining Work
- █ Critical
- ◆ Milestone

THREE MONTH ROLLING PROGRAMME
VEHICLE CLEARANCE PLAZAS AND ANCILLARY BUILDINGS AND FACILITIES
 Page 5 of 14

Date	Revision	Checked	Approved
30-Apr-16	3MRP updated as of 30 Apr. 2016	ZJ	
31-May-16	3MRP updated as of 31 May 2016	ZJ	
30-Jun-16	3MRP updated as of 30 June 2016	ZJ	

Activity ID	Activity Name	Original Duration	Remaining Duration	% Complete	Start	Finish	Total Float	2016				
								Jun	Jul	Aug	Sep	Oct
SG3580	Sewerage (1330m & 34MHs)	300	225	25%	02-Jan-16 A	30-Mar-17	-135					
Waterpipe Laying												
SW1550	Fresh Water Main Laying (1972m)	300	300	0%	30-Jun-16	05-Jul-17	-135					
SW1560	Flushing Water Main Laying (1851m)	300	300	0%	30-Jun-16	05-Jul-17	-135					
Duct Laying for Utilities/Telecom Cabling, TCSS & Lighting												
SU5300	Duct Laying for Utilities/Telecom Cabling	300	300	0%	30-Jun-16	05-Jul-17	-135					
Roadworks												
SR1640	Subbase (43152 ton)	342	342	0%	08-Jul-16	30-Aug-17	-135					
SR3590	Bitumen Pavement (61126 ton)	342	342	0%	05-Aug-16	27-Sep-17	-135					
SR3600	Rigid Pavement (594 m3), Footpath & EVA	342	342	0%	05-Aug-16	27-Sep-17	-135					
Sign Gantry ADS 306A & ADS 306B												
SS5230	Submission and approval for Sign Gantry	100	80	20%	03-May-16 A	04-Oct-16	-133					
PORTION C												
Portion C Buildings												
010 - Inbound Coach Kiosk & Staff Subway Entrance												
A01010	Substructure and Staircase Construction	60	60	0%	30-Jun-16	08-Sep-16	-236					
A01020	Kiosk Superstructure	100	100	0%	09-Sep-16	10-Jan-17	-236					
009 - Shuttle Bus Kiosk & Staff Subway Entrance												
A00910	ELS + Blinding (Bay 0-3) (4 bay)	42	10	76.19%	06-May-16 A	12-Jul-16	-187					
A00920	Constructing Base Slab of Bay 0-3 (Bay 3 cast)	28	16	42.86%	14-May-16 A	30-Jul-16	-187					
A00930	Constructing Wall + Top Slab of Bay 0-3	37	37	0%	13-Jul-16	24-Aug-16	-187					
A00940	Finishing	30	30	0%	05-Aug-16	08-Sep-16	-187					
A00950	BS + E&M for AVCSS works (Stage 1)	30	30	0%	15-Aug-16	19-Sep-16	-187					
B00910	Substructure and Staircase Construction (Portion B&C)	43	43	0%	20-Sep-16	10-Nov-16	-187					
012 - DOH Disinsection Area and Store Room 1, at Portion C												
B01210	Excavation & Blinding	10	10	0%	30-Jun-16	12-Jul-16	12					
B01220	Raft Foundation	20	20	0%	13-Jul-16	04-Aug-16	18					
B01230	Superstructure	35	35	0%	05-Aug-16	14-Sep-16	18					
B01240	Finishing	80	80	0%	15-Sep-16	20-Dec-16	82					
B01270	BS for Office Accomodation (Stage 8)	70	70	0%	15-Sep-16	08-Dec-16	18					
104 - DOH Secondary Screening Station, at Portion C												
A10420	Excavation & Blinding	5	5	0%	27-Aug-16	01-Sep-16	-27					
Facade Cladding System												
A10460	Shop Drawing Submission and Approval	30	30	0%	27-Aug-16	03-Oct-16	2					
108 C&ED Mobile X-ray Machine Operation Office, Portion C												
A10805	Excavation & Blinding	5	5	0%	02-Sep-16	07-Sep-16	-57					
A10810	Raft Foundation	25	25	0%	08-Sep-16	08-Oct-16	-57					
110 IMMD Guard Booth (Type 2)												
A11020	Excavation & Blinding	5	5	0%	02-Sep-16	07-Sep-16	-27					
A11030	Substructure	25	25	0%	08-Sep-16	08-Oct-16	-1					
Facade Envelop Structure Installation												
A11040	Shop Drawing Submission and Approval	30	30	0%	27-Aug-16	03-Oct-16	33					
111 Field Kiosk for Carpark Operator												
A11120	Excavation & Blinding	5	5	0%	27-Aug-16	01-Sep-16	-52					
HPL Composite Panel Cladding System												

- █ Actual Work
- █ Remaining Work
- █ Critical
- ◆ Milestone

Date	Revision	Checked	Approved
30-Apr-16	3MRP updated as of 30 Apr. 2016	ZJ	
31-May-16	3MRP updated as of 31 May 2016	ZJ	
30-Jun-16	3MRP updated as of 30 June 2016	ZJ	

Activity ID	Activity Name	Original Duration	Remaining Duration	% Complete	Start	Finish	Total Float	2016						
								Jun	Jul	Aug	Sep	Oct		
B11110	Shop Drawing Submission and Approval	30	30	0%	27-Aug-16	03-Oct-16	33							
113 - Field Kiosk for Access Control, Portion C														
C11310	Excavation & Blinding	5	5	0%	27-Aug-16	01-Sep-16	-77							
C11320	Raft Foundation	30	30	0%	02-Sep-16	08-Oct-16	-77							
External Works for Portion C														
Works in Location 1.2, 1.8 & 011 - Emergency Generator Building														
BB1440	Works in Location 1.2	90	90	0%	30-Jun-16	17-Oct-16	117							
Drainage Works														
B00040	Initial Survey	12	12	0%	27-Aug-16	09-Sep-16	-239							
SG2400	Drainage Works (1695m & 32MHs)	120	120	0%	10-Sep-16	07-Feb-17	-239							
SG3610	Sewerage (186m & 4MHs)	120	120	0%	10-Sep-16	07-Feb-17	-117							
PORTION D														
Portion D Building														
113 - Field Kiosk for Access Control, Portion D														
C11350	Excavation & Blinding	5	5	0%	08-Sep-16	13-Sep-16	-27							
C11360	Raft Foundation	30	30	0%	14-Sep-16	21-Oct-16	-27							
External Works for Portion D														
Drainage Works														
B00050	Initial Survey	6	6	0%	30-Jun-16	07-Jul-16	-7							
SG3640	Drainage Works (555m & 13MHs)	90	90	0%	08-Jul-16	24-Oct-16	-7							
SG3760	Sewerage (121m & 6MHs)	100	100	0%	08-Jul-16	04-Nov-16	-7							
Waterpipe Laying														
SW3650	Fresh Water Main Laying (108m)	100	100	0%	05-Sep-16	05-Jan-17	-7							
Duct Laying for Utilities/Telecom Cabling, TCSS & Lighting														
SU5340	Duct Laying for Utilities/Telecom Cabling	100	100	0%	05-Sep-16	05-Jan-17	-7							
SU5350	Duct Laying for TCSS & Lighting	100	100	0%	05-Sep-16	05-Jan-17	-7							
PORTION E														
Portion E Building														
006 - Shuttle Bus Kiosk & Staff Subway Entrance, at Portion E & M														
A00610	ELS + Blinding for Subway	12	12	0%	08-Aug-16	20-Aug-16	-105							
A00620	Constructing base of Subway	25	25	0%	22-Aug-16	20-Sep-16	-105							
A00630	Constructing wall stem + top slab of Subway	40	40	0%	21-Sep-16	08-Nov-16	-105							
External Works for Portion E														
Drainage Works														
B00060	Initial Survey	6	6	0%	30-Jun-16	07-Jul-16	-79							
PORTION G, H1 & H2														
Portion G Structures														
Box Culvert C														
Steel H Pile														
SC5130	Box C - 164 nos. of driven H pile	60	60	0%	30-Jun-16	08-Sep-16	-96							
SC5530	Testing	50	50	0%	12-Aug-16	12-Oct-16	-82							
Box Culvert Structure														
SC0310	Box C - Branch Construction	45	45	0%	09-Sep-16	03-Nov-16	-18							
SC0380	Box C - Construction of Main Body	142	142	0%	09-Sep-16	03-Mar-17	-96							
Bridge A1														
Bored Pile														
S10120	Bore pile, 10 nos. (8 No. cast)	58	62	0%	01-Mar-16 A	10-Sep-16	-5							

- █ Actual Work
- █ Remaining Work
- █ Critical
- ◆ Milestone

Date	Revision	Checked	Approved
30-Apr-16	3MRP updated as of 30 Apr. 2016	ZJ	
31-May-16	3MRP updated as of 31 May 2016	ZJ	
30-Jun-16	3MRP updated as of 30 June 2016	ZJ	

HZMB HK Boundary Crossing Facilities - Vehicle Clearance Plazas and Ancillary Buildings and Facilities

29-Jun-16

Activity ID	Activity Name	Original Duration	Remaining Duration	% Complete	Start	Finish	Total Float	2016						
								Jun	Jul	Aug	Sep	Oct		
Pile Cap														
S10510	Cap - Pier A106	30	30	0%	24-Sep-16	31-Oct-16	-5							
S10520	Cap - Pier P103, P104	30	0	100%	24-May-16 A	14-Jun-16 A		█						
S10530	Cap - Pier P102, P105 (102 cast)	30	15	50%	15-Jun-16 A	13-Oct-16	2		█					█
Pier & Abutment														
S10620	Pier P103, P104	25	25	0%	24-Sep-16	25-Oct-16	17							█
Bridge A2														
Pier & Abutment														
S21420	Pier P203	25	0	100%	30-Apr-16 A	30-May-16 A		█						
S21440	Pier P202, P204 (all cast)	25	0	100%	30-Mar-16 A	21-Jun-16 A		█						
Structure Deck														
S21570	Construct Deck, Bridge A2	120	114	5%	23-May-16 A	21-Aug-17	-108	█						
Bridge A3														
Bored Pile														
S31630	Bore piling for A305, P304a/b (5 Nr.) (2 cast)	43	22	50%	06-Jun-16 A	26-Jul-16	13	█	█					
S31640	Bore piling for P302, P303, A305 (6Nr.) (2 cast)	34	24	29.41%	13-Jun-16 A	28-Jul-16	13	█	█					
S31670	Pile Testing for P304a/b	7	7	0%	01-Aug-16	09-Aug-16	19			█				
S31680	Pile Testing for P302, P303 & A305	7	7	0%	10-Aug-16	17-Aug-16	13			█				
Pile Cap														
S32030	Cap - P304a/b	30	30	0%	09-Aug-16	13-Sep-16	19			█				
S32040	Cap - Pier P302, P303, A305	30	30	0%	18-Aug-16	22-Sep-16	13			█				
Pier & Abutment														
S32120	Pier P304a, P304b	25	25	0%	13-Sep-16	15-Oct-16	19						█	
S32130	Abutment A305	30	30	0%	23-Sep-16	29-Oct-16	13						█	
Bridge A4														
Bored Pile														
S42320	Bore pile 4 Nr. (1 cast)	33	25	25%	01-Jun-16 A	29-Jul-16	-214	█	█					
S42340	Pile Testing	7	7	0%	09-Aug-16	17-Aug-16	-214			█				
Pile Cap														
S42360	Cap - Pier P401	30	30	0%	17-Aug-16	22-Sep-16	-214			█				
S42370	Cap - Pier P402	30	30	0%	17-Aug-16	22-Sep-16	-214			█				
Pier & Abutment														
S42380	Pier P401	25	25	0%	22-Sep-16	24-Oct-16	-214						█	
S42390	Pier P402	25	25	0%	22-Sep-16	24-Oct-16	-214						█	
Bridge A5														
Bored Pile														
S52630	Bore piling for 19 Nr. (5 cast)	60	36	40%	17-May-16 A	11-Aug-16	-154	█	█					
S52640	Pile Testing for P504, P505	7	7	0%	30-Jun-16	08-Jul-16	-145		█					
S52650	Pile Testing for A503 & P506	7	7	0%	16-Aug-16	23-Aug-16	-154			█				
S52660	Pile Testing for A501 & P502a/b, P507	7	7	0%	23-Aug-16	30-Aug-16	-140			█				
Pile Cap														
S52710	Cap for P504, P505	30	30	0%	09-Jul-16	12-Aug-16	-145		█					

- █ Actual Work
- █ Remaining Work
- █ Critical
- ◆ Milestone

THREE MONTH ROLLING PROGRAMME
VEHICLE CLEARANCE PLAZAS AND ANCILLARY BUILDINGS AND FACILITIES
 Page 8 of 14

Date	Revision	Checked	Approved
30-Apr-16	3MRP updated as of 30 Apr. 2016	ZJ	
31-May-16	3MRP updated as of 31 May 2016	ZJ	
30-Jun-16	3MRP updated as of 30 June 2016	ZJ	

Activity ID	Activity Name	Original Duration	Remaining Duration	% Complete	Start	Finish	Total Float	2016					
								Jun	Jul	Aug	Sep	Oct	
S52720	Cap - Pier P503, P506	30	30	0%	24-Aug-16	28-Sep-16	-154						
S52730	Cap - Pier A501, P502a/b, P507	35	35	0%	31-Aug-16	13-Oct-16	-140						
Pier & Abutment													
S52800	Pier P504, P505	25	25	0%	13-Aug-16	10-Sep-16	-140						
S52820	Pier P503, P506	25	25	0%	29-Sep-16	29-Oct-16	-154						
Bridge A6													
Pile Cap													
S63410	Cap - P606, P607/711 (606 cast)	40	20	50%	24-May-16 A	23-Jul-16	-117						
S63430	Cap - P604, P605 (604 cast)	30	15	50%	20-May-16 A	18-Jul-16	-100						
S63440	Cap - P602, P603	30	0	100%	14-May-16 A	06-Jun-16 A							
Pier & Abutment													
S63350	Pier P601, P606	25	13	50%	29-Mar-16 A	08-Aug-16	-117						
S63360	Pier P604, P605	25	25	0%	08-Aug-16	06-Sep-16	-117						
S63370	Pier P602, P603 (602 cast)	25	13	50%	06-Jun-16 A	21-Sep-16	-117						
S63380	Abutment A607	30	30	0%	25-Jul-16	27-Aug-16	-97						
Structure Deck													
S63880	Construct Deck, Bridge A6	135	135	0%	22-Sep-16	07-Mar-17	-117						
Bridge A7a, A7b, A7c													
Bored Pile													
S74170	Bore Piling for A701, P702 - P705, 10 Nr. (4 Nr. done)	42	25	40%	20-Nov-15 A	10-Sep-16	-84						
S74920	Pile Testing for A701, P702, P703	7	7	0%	23-Sep-16	03-Oct-16	-70						
Pile Cap													
S74210	Cap for P706, P707, P712 (706 cast)	30	18	40%	01-Jun-16 A	21-Jul-16	-5						
S74220	Cap for P704, P705	30	30	0%	30-Jun-16	04-Aug-16	-22						
S74270	Cap for P710	30	0	100%	01-Jun-16 A	13-Jun-16 A							
Pier & Abutment													
S74310	Pier P706, P707, P712	25	25	0%	22-Jul-16	19-Aug-16	-5						
S74320	Pier P704, P705	25	25	0%	20-Aug-16	19-Sep-16	-5						
S74390	Pier P708, P709	25	25	0%	20-Sep-16	20-Oct-16	-5						
S74450	Abutment A711	30	30	0%	29-Aug-16	04-Oct-16	8						
Bridge A8													
Bored Pile													
S86130	Bore pile P802, P803, A804, 6 Nr. (5 Nr. cast)	87	4	95.4%	27-Jan-16 A	05-Jul-16	17						
S86140	Pile Testing for A804	7	7	0%	18-Jul-16	25-Jul-16	17						
S86150	Pile Testing for P802, P803	7	7	0%	18-Jul-16	25-Jul-16	47						
Pile Cap													
S86210	Cap - Abutment A804	30	30	0%	26-Jul-16	29-Aug-16	17						
S86220	Cap for P802, P803	30	30	0%	30-Aug-16	05-Oct-16	17						
Pier & Abutment													
S86250	Abutment A804	30	30	0%	30-Aug-16	05-Oct-16	19						
Retaining Walls W1-1, W3-1, W5-1 & W7-1													
Retaining Wall W3-1													

- █ Actual Work
- █ Remaining Work
- █ Critical
- ◆ Milestone

Date	Revision	Checked	Approved
30-Apr-16	3MRP updated as of 30 Apr. 2016	ZJ	
31-May-16	3MRP updated as of 31 May 2016	ZJ	
30-Jun-16	3MRP updated as of 30 June 2016	ZJ	

Activity ID	Activity Name	Original Duration	Remaining Duration	% Complete	Start	Finish	Total Float	2016					
								Jun	Jul	Aug	Sep	Oct	
S37130	Bored Pile for W3-1, 16 Nr.	118	118	0%	10-Sep-16	06-Feb-17	-84						
Portion G Buildings													
033 Inbound Private Car Exam Building													
A03320	Super Structure	40	39	2.5%	11-May-16 A	15-Aug-16	-15						
A03330	Finishing	90	90	0%	16-Aug-16	01-Dec-16	16						
A03360	External Works	70	70	0%	16-Aug-16	08-Nov-16	118						
A03370	BS for Office Accomodation (Stage 8)	70	70	0%	16-Aug-16	08-Nov-16	44						
Glass Canopy Installation													
B03300	Shop Drawing Submission and Approval	30	30	0%	19-Aug-16	23-Sep-16	-15						
B03305	Fabrication of Glass Canopy	60	60	0%	24-Sep-16	05-Dec-16	-15						
Aluminium Metal Canopy													
B03310	Shop Drawing Submission and Approval	30	30	0%	19-Aug-16	23-Sep-16	0						
B03315	Fabrication of F/C System	60	60	0%	24-Sep-16	05-Dec-16	0						
034 Satellite RCP South													
A03400	Excavation + Blinding (+ PL Test)	5	5	0%	25-May-16 A	06-Jul-16	19						
A03430	Raft Foundation	30	30	0%	16-Aug-16	20-Sep-16	-15						
A03440	Super Structure (Roof Beams & Slabs)	40	40	0%	21-Sep-16	08-Nov-16	-15						
035 - Sewage Pumping Station, Portion G													
A03540	Sheet Piling as ELS for Wet Well	12	12	0%	25-Jun-16 A	14-Jul-16	-69						
A03550	Pile Testing, 5 Nr.	7	7	0%	15-Jul-16	22-Jul-16	-69						
A03560	ELS + Blinding for Wet Well	10	10	0%	23-Jul-16	03-Aug-16	-69						
A03570	Constructing of Base Slab of Wet Well	20	20	0%	04-Aug-16	26-Aug-16	-69						
A03580	Constructing of Wall Stem of Wet Well	25	25	0%	27-Aug-16	26-Sep-16	-69						
A03590	Water-tightness Test for Wet Wells	12	12	0%	27-Sep-16	12-Oct-16	-69						
051 Transformers (Zone 5)													
A05150	Finishing	60	57	5%	16-May-16 A	05-Sep-16	92						
A05160	BS + E&M for Tx Room to CLP (Stage 3A)	59	59	0%	30-Jun-16	07-Sep-16	24						
A05165	Energisation by CLP	50	50	0%	08-Sep-16	08-Nov-16	132						
A05170	BS for Office Accommodations (KD9)	70	70	0%	08-Sep-16	01-Dec-16	24						
A05190	Other BS + E & M Installation	150	147	2%	22-Feb-16 A	08-Mar-17	91						
100 Inbound Traffic Control Kiosk													
A10000	Excavation + Blinding (PL test commenced on 26/1/16)	5	5	0%	30-Jun-16	06-Jul-16*	-114						
A10010	Raft Foundation	15	15	0%	07-Jul-16	23-Jul-16	-114						
A10040	Super Structure (Roof Beams & Slabs)	30	30	0%	25-Jul-16	27-Aug-16	-114						
A10050	Finishing	45	45	0%	29-Aug-16	22-Oct-16	-114						
A10070	BS + E&M for AVCSS Works (KD18A)	86	86	0%	29-Aug-16	09-Dec-16	-114						
HPL Composite Panel Cladding System													
B10010	Shop Drawing Submission and Approval	30	30	0%	30-Jun-16	04-Aug-16	92						
B10015	Fabrication of F/C System	60	60	0%	05-Aug-16	17-Oct-16	92						
External Works for Portion G, H1 & H2													
Works within Portion H1 & H2 except the ELV Works in the Hong Kong Side PTI													
BB1560	Works within Portion H1 & H2 in the Hong Kong Side PTI (KD20)	100	100	0.5%	30-May-16 A	11-Aug-17	-142						
All Works within the Boundary defined in Drawing No. 60191048/C3/000/C00/1050													

- █ Actual Work
- █ Remaining Work
- █ Critical
- ◆ Milestone

Date	Revision	Checked	Approved
30-Apr-16	3MRP updated as of 30 Apr. 2016	ZJ	
31-May-16	3MRP updated as of 31 May 2016	ZJ	
30-Jun-16	3MRP updated as of 30 June 2016	ZJ	

Activity ID	Activity Name	Original Duration	Remaining Duration	% Complete	Start	Finish	Total Float	2016					
								Jun	Jul	Aug	Sep	Oct	
BB1570	All Works within the Boundary defined in Drawing No. 60191048/C3/000/1050, excluding Portion H1 & H2 & Bridges (K/D24)	126	126	0%	26-Sep-16	28-Feb-17	-14						
Drainage Works													
B00080	Initial Survey	12	12	0%	30-Jun-16	14-Jul-16	-173						
SG4070	Drainage Works (3748m & 191MHs)	84	80	5%	03-May-16 A	13-Apr-17	-7						
SG4190	Sewerage (422m & 12MHs)	84	80	5%	01-Jun-16 A	13-Apr-17	-7						
Sign Gantry DS40, DS41 & DS75													
SS0020	Sign Gantry DS40 Pre-bored H Piling, 12 Nr.	30	30	0%	30-Jun-16	04-Aug-16	87						
SS0040	Sign Gantry DS41 Driven Piling 4 Nr.	7	7	0%	09-Sep-16	17-Sep-16	110						
SS0080	Testing for Pre-bored H Piling	50	50	0%	29-Aug-16	28-Oct-16	97						
SS0170	Submission and approval for Sign Gantry	90	90	0%	30-Jun-16	17-Oct-16	-143						
PORTION J													
Portion J Structure													
030 Outbound Staff Subway (Portion J)													
B03010	ELS + blinding (Bay 34-41) (8 bay)	55	55	0%	02-Jul-16	03-Sep-16	-102						
B03020	Bay 34-39 Construction - Base Slab	34	34	0%	10-Aug-16	19-Sep-16	-102						
B03030	Bay 34-39 Construction - Wall + Top Slab	43	43	0%	31-Aug-16	22-Oct-16	-102						
B03040	Bay 40-41 Construction - Base Slab	34	34	0%	10-Aug-16	19-Sep-16	-102						
B03050	Bay 40-41 Construction - Wall + Top Slab, Staircase	43	43	0%	31-Aug-16	22-Oct-16	-102						
B03060	Internal Finishes & Cable Containment (KD2)	30	30	0%	27-Sep-16	02-Nov-16	-102						
030 Outbound Private Car & GV Kiosks													
A03010	Submission & Approval for Steel Works	60	26	56.67%	01-Apr-16 A	30-Jul-16	-105						
A03020	Pre-fabrication for the Steel Kiosks	84	84	0%	01-Aug-16	09-Nov-16	-105						
030 Outbound Kiosks, Section IX, Subject to Excision													
C03010	Submission & Approval for Steel Works	100	26	74%	01-Apr-16 A	30-Jul-16	-69						
C03020	Pre-fabrication for the Steel Kiosks	100	100	0%	01-Aug-16	28-Nov-16	-69						
Portion J Buildings													
024 Outbound Private Car Exam Building													
A02400	Excavation + Blinding	10	10	0%	08-Jul-16	19-Jul-16	-68						
A02410	Raft Foundation	30	30	0%	20-Jul-16	23-Aug-16	-68						
A02420	Super Structure	40	40	0%	24-Aug-16	12-Oct-16	-68						
Glass Canopy Installation													
B02410	Shop Drawing Submission and Approval	30	30	0%	02-Jul-16	05-Aug-16	6						
B02415	Fabrication of F/C System	60	60	0%	06-Aug-16	18-Oct-16	6						
Aluminium Metal Canopy													
B02450	Shop Drawing Submission and Approval	30	30	0%	02-Jul-16	05-Aug-16	21						
B02455	Fabrication of F/C System	60	60	0%	06-Aug-16	18-Oct-16	21						
031 Outbound IMMD and DOH Secondary Screen Building													
A03100	Excavation + Blinding	10	10	0%	15-Jul-16	26-Jul-16	-25						
A03110	Raft Foundation	35	35	0%	27-Jul-16	05-Sep-16	-25						
A03140	Super Structure	89	89	0%	06-Sep-16	21-Dec-16	-25						
060 - Single Storey Support Building Associated with Buildings 044 & 045													
A06000	Excavation + Blinding	5	5	0%	14-Sep-16	20-Sep-16	-157						
A06010	Raft Foundation (Traper)	25	25	0%	21-Sep-16	21-Oct-16	-157						
A06040	Excavation + Blinding (Strip part)	15	15	0%	21-Sep-16	08-Oct-16	-36						
061 Telecom Building													

- █ Actual Work
- █ Remaining Work
- █ Critical
- ◆ Milestone

Date	Revision	Checked	Approved
30-Apr-16	3MRP updated as of 30 Apr. 2016	ZJ	
31-May-16	3MRP updated as of 31 May 2016	ZJ	
30-Jun-16	3MRP updated as of 30 June 2016	ZJ	

Activity ID	Activity Name	Original Duration	Remaining Duration	% Complete	Start	Finish	Total Float	2016					
								Jun	Jul	Aug	Sep	Oct	
A06120	Excavation + Blinding	5	5	0%	02-Jul-16	07-Jul-16	12		■				
A06130	Raft Foundation	25	25	0%	03-Oct-16	01-Nov-16	-60						■
A06140	Super Structure	40	40	0%	02-Nov-16	17-Dec-16	-60						
Aluminium Metal Canopy													
B06110	Shop Drawing Submission and Approval	30	30	0%	25-Aug-16	29-Sep-16	55						■
101 Outbound Traffic Control Kiosk													
A10100	Excavation + Blinding	5	5	0%	02-Jul-16	07-Jul-16	-83		■				
A10110	Raft Foundation	13	13	0%	19-Oct-16	02-Nov-16	-168						
HPL Composite Panel Cladding System													
B10110	Shop Drawing Submission and Approval	30	30	0%	02-Jul-16	05-Aug-16	76		■				
B10120	Fabrication of HPL Cladding	60	60	0%	06-Aug-16	18-Oct-16	76						■
External Works for Portion J													
Drainage Works													
B00110	Initial Survey	6	6	0%	02-Jul-16	08-Jul-16	-57		■				
SG4220	Drainage Works (3435m & 117MHs)	180	178	1%	25-Apr-16 A	02-Mar-17	-73	■					
SG4340	Sewerage (845m & 22MHs)	180	178	1%	01-Jun-16 A	02-Mar-17	-73	■					
Waterpipe Laying													
SW4230	Fresh Water Main Laying (1541m)	180	180	0%	26-Aug-16	03-Apr-17	-73						■
SW4240	Flushing Water Main Laying (862m)	180	180	0%	30-Jul-16	08-Mar-17	-51						■
Duct Laying for Utilities/Telecom Cabling, TCSS & Lighting													
SU5420	Duct Laying for Utilities/Telecom Cabling	180	180	0%	26-Aug-16	03-Apr-17	-73						■
SU5430	Duct Laying for TCSS & Lighting	180	180	0%	26-Aug-16	03-Apr-17	-73						■
Sign Gantry DS104													
SS0140	Sign Gantry DS104 P-bored Piling, 8 Nr.	30	30	0%	05-Aug-16	08-Sep-16	87						■
SS5140	Submission and approval for Sign Gantry	60	60	0%	02-Jul-16	09-Sep-16	-44		■				
SS5150	Fabrication & Delivery of Sign Gantrys to Site	180	180	0%	10-Sep-16	22-Apr-17	-44						■
PORTION K, L & M													
Portion K Building													
002 - C&ED Observation Guard Booth													
A00210	Excavation + Blinding	5	5	0%	12-Aug-16	17-Aug-16	-34						■
Portion M Buildings													
108 - C&ED Mobile X-ray Operation Office, Portion M													
B10800	Excavation + Blinding	5	5	0%	01-Aug-16	05-Aug-16	-94						■
B10810	Substructure (raft Foundation)	20	20	0%	06-Aug-16	29-Aug-16	-94						■
B10840	Super Structure (Roof beams & Slabs)	30	30	0%	30-Aug-16	05-Oct-16	-94						■
HPL Composite Panel Cladding System													
C10810	Shop Drawing Submission and Approval	30	30	0%	01-Aug-16	03-Sep-16	10						■
C10820	Fabrication of HPL Cladding	60	60	0%	05-Sep-16	16-Nov-16	10						■
104 DOH Screening Station, at Portion M													
C10400	Excavation + Blinding	5	5	0%	06-Aug-16	11-Aug-16	-49						■
Facade Envelop Structure Installation													
D10450	Shop Drawing Submission and Approval	30	30	0%	01-Aug-16	03-Sep-16	55						■
D10455	Fabrication of F/C System	60	60	0%	05-Sep-16	16-Nov-16	55						■
External Works													
Additional Works (Filling & RE Slope) & Drainage Works													
SG0010	Initial Survey for Portion K, L, & M	6	6	0%	08-Jun-16 A	06-Aug-16	-107	■					■

- Actual Work
- Remaining Work
- Critical
- ◆ Milestone

Date	Revision	Checked	Approved
30-Apr-16	3MRP updated as of 30 Apr. 2016	ZJ	
31-May-16	3MRP updated as of 31 May 2016	ZJ	
30-Jun-16	3MRP updated as of 30 June 2016	ZJ	

Activity ID	Activity Name	Original Duration	Remaining Duration	% Complete	Start	Finish	Total Float	2016				
								Jun	Jul	Aug	Sep	Oct
SG0090	Additional Works (Filling & RE Slope)	148	148	0%	08-Jun-16 A	26-Jan-17	-91					
Slope Works at Portion M												
SL0020	Cutting Existing Slope	30	30	0%	08-Aug-16	10-Sep-16	-91					
SL0030	Laying Granular Fill & Backfilling Slope	30	30	0%	12-Sep-16	19-Oct-16	-91					
Canopy and Covered Walkway												
CC1400	Shop drawing, Approved & Fabrication	136	136	0%	01-Aug-16	12-Jan-17	-65					
PORTION N												
Portion N Structure												
Box Culvert B												
Bored Pile												
SB0570	Box B - Bore Pile, 30 nos.	85	85	0%	02-Aug-16	11-Nov-16	-7					
Portion N Buildings												
104 DOH Screening Station, at Portion N												
C10405	Excavation + Blinding	5	5	0%	02-Aug-16	06-Aug-16	26					
C10410	Structure (Raft Foundation)	25	25	0%	08-Aug-16	05-Sep-16	26					
C10420	Finishing	45	45	0%	06-Sep-16	31-Oct-16	195					
E10410	BS for Office Accommodations (KD9)	70	70	0%	06-Sep-16	29-Nov-16	26					
E10430	Other BS + E & M Installation	130	130	0%	26-Sep-16	04-Mar-17	94					
Facade Envelop Structure Installation												
D10410	Shop Drawing Submission and Approval	30	30	0%	17-Aug-16	21-Sep-16	52					
D10415	Fabrication of F/C System	60	60	0%	22-Sep-16	02-Dec-16	52					
106 C&ED Detention Area Guard Booth												
A10600	Excavation + Blinding	5	5	0%	02-Aug-16	06-Aug-16	31					
A10610	Structure (Raft Foundation)	20	20	0%	08-Aug-16	30-Aug-16	31					
A10640	Finishing	45	45	0%	31-Aug-16	25-Oct-16	200					
E10640	BS for Office Accommodations (KD9)	70	70	0%	31-Aug-16	23-Nov-16	31					
E10660	Other BS + E & M Installation	130	130	0%	20-Sep-16	27-Feb-17	99					
107 C&ED Mobile X-ray Operation Office, Portion N												
A10700	Excavation + Blinding	5	5	0%	08-Aug-16	12-Aug-16	54					
A10710	Substructure (Raft Foundation)	25	25	0%	31-Aug-16	29-Sep-16	39					
External Works for Portion N												
Drainage Works												
B00150	Initial Survey	12	12	0%	02-Aug-16	15-Aug-16	-101					
SG4520	Drainage Works (3359m & 107MHs)	126	126	0%	16-Aug-16	16-Jan-17	-29					
SG4640	Sewerage (383m & 12MHs)	126	126	0%	16-Aug-16	16-Jan-17	-29					
Waterpipe Laying												
SW4530	Fresh Water Main Laying (641m)	126	126	0%	13-Sep-16	16-Feb-17	-29					
SW4540	Flushing Water Main Laying (413m)	126	126	0%	13-Sep-16	16-Feb-17	-29					
Duct Laying for Utilities/Telecom Cabling, TCSS & Lighting												
SU5460	Duct Laying for Utilities/Telecom Cabling	126	126	0%	13-Sep-16	16-Feb-17	-29					
SU5470	Duct Laying for TCSS & Lighting	125	125	0%	14-Sep-16	16-Feb-17	-101					
PORTION P												
Portion Structure												
Retaining Wall RW1												
S10810	Construction of Retaining Wall RW1 (U-shape, 5 bays)	100	100	0%	24-Aug-16	21-Dec-16	56					
Portion P Buildings												
105 IMMD Guard Booth, Portion P												

- Actual Work
- Remaining Work
- Critical
- Milestone

Date	Revision	Checked	Approved
30-Apr-16	3MRP updated as of 30 Apr. 2016	ZJ	
31-May-16	3MRP updated as of 31 May 2016	ZJ	
30-Jun-16	3MRP updated as of 30 June 2016	ZJ	

Activity ID	Activity Name	Original Duration	Remaining Duration	% Complete	Start	Finish	Total Float	2016					
								Jun	Jul	Aug	Sep	Oct	
A10510	Excavation + Blinding	5	5	0%	24-Aug-16	29-Aug-16	42						
Facade Envelop Structure Installation													
A10560	Shop Drawing Submission and Approval	30	30	0%	24-Aug-16	28-Sep-16	50						
A10565	Fabrication of F/C System	60	60	0%	29-Sep-16	09-Dec-16	50						
External Works for Portion P													
Drainage Works													
B00160	Initial Survey	6	6	0%	24-Aug-16	30-Aug-16	0						
SG4670	Drainage Works (4651m & 129MHs)	105	105	0%	31-Aug-16	06-Jan-17	40						
SG4790	Sewerage (269m & 7MHs)	105	105	0%	31-Aug-16	06-Jan-17	40						
Waterpipe Laying													
SW4680	Fresh Water Main Laying (1270m)	105	105	0%	29-Sep-16	07-Feb-17	40						
SW4690	Flushing Water Main Laying (455m)	105	105	0%	29-Sep-16	07-Feb-17	40						
Duct Laying for Utilities/Telecom Cabling, TCSS & Lighting													
SU5480	Duct Laying for Utilities/Telecom Cabling	105	105	0%	29-Sep-16	07-Feb-17	41						
SU5490	Duct Laying for TCSS & Lighting (KD15)	24	24	0%	09-Sep-16	08-Oct-16	0						
Landscape Works													
A5170	Design and Procurement for Irrigation System	274	274	0%	30-Jun-16	30-Mar-17	-11						

- Actual Work
- Remaining Work
- Critical
- Milestone

Date	Revision	Checked	Approved
30-Apr-16	3MRP updated as of 30 Apr. 2016	ZJ	
31-May-16	3MRP updated as of 31 May 2016	ZJ	
30-Jun-16	3MRP updated as of 30 June 2016	ZJ	

MATERIALAB CONSULTANTS LIMITED

Room 723 & 725, 7/F, Block B,
Profit Industrial Building,
1-15 Kwai Fung Crescent, Kwai Fong,
Hong Kong.

Tel : (852)-24508238
Fax : (852)-24508032
Email : mcl@fugro.com

The logo for MaterialLab, featuring the word "MaterialLab" in a bold, sans-serif font. The text is white and is set against a black background that consists of two thick horizontal bars, one above and one below the text.

Report No.: 0165/15/ED/0504

Appendix D

Event / Action Plan

Appendix D –

Event / Action Plan for Air Quality and Noise Monitoring

Event / Action Plan for Air Quality

Event	Action			
	ET	IEC	ER	Contractor
Action Level				
1. Exceedance for one sample	1. Identify source, investigate the causes of exceedance and propose remedial measures; 2. Inform IEC and ER; 3. Repeat measurement to confirm finding; 4. Increase monitoring frequency to daily.	1. Check monitoring data submitted by ET; 2. Check Contractor's working method.	1. Notify Contractor.	1. Rectify any unacceptable practice; 2. Amend working methods if appropriate.

Event	Action			
	ET	IEC	ER	Contractor
2. Exceedance for two or more consecutive samples	<ol style="list-style-type: none"> 1. Identify source; 2. Inform IEC and ER; 3. Advise the ER on the effectiveness of the proposed remedial measures; 4. Repeat measurements to confirm findings; 5. Increase monitoring frequency to daily; 6. Discuss with IEC and Contractor on remedial actions required; 7. If exceedance continues, arrange meeting with IEC and ER; 8. If exceedance stops, cease additional monitoring. 	<ol style="list-style-type: none"> 1. Check monitoring data submitted by ET; 2. Check Contractor's working method; 3. Discuss with ET and Contractor on possible remedial measures; 4. Advise the ER on the effectiveness of the proposed remedial measures; 5. Supervise Implementation of remedial measures. 	<ol style="list-style-type: none"> 1. Confirm receipt of notification of failure in writing; 2. Notify Contractor; 3. Ensure remedial measures properly implemented. 	<ol style="list-style-type: none"> 1. Submit proposals for remedial to ER within 3 working days of notification; 2. Implement the agreed proposals; 3. Amend proposal if appropriate.

Event	Action			
	ET	IEC	ER	Contractor
Limit Level				
1. Exceedance for one sample	1. Identify source, investigate the causes of exceedance and propose remedial measures; 2. Inform ER, Contractor and EPD; 3. Repeat measurement to confirm finding; 4. Increase monitoring frequency to daily; 5. Assess effectiveness of Contractor's remedial actions and keep IEC, EPD and ER informed of the results.	1. Check monitoring data submitted by ET; 2. Check Contractor's working method; 3. Discuss with ET and Contractor on possible remedial measures; 4. Advise the ER on the effectiveness of the proposed remedial measures; 5. Supervise implementation of remedial measures.	1. Confirm receipt of notification of failure in writing; 2. Notify Contractor; 3. Ensure remedial measures properly implemented.	1. Take immediate action to avoid further exceedance; 2. Submit proposals for remedial actions to IEC within 3 working days of notification; 3. Implement the agreed proposals; 4. Amend proposal if appropriate.

Event	Action			
	ET	IEC	ER	Contractor
2. Exceedance for two or more consecutive samples	<ol style="list-style-type: none"> 1. Notify IEC, ER, Contractor and EPD; 2. Identify source; 3. Repeat measurement to confirm findings; 4. Increase monitoring frequency to daily; 5. Carry out analysis of Contractor's working procedures to determine possible mitigation to be implemented; 6. Arrange meeting with IEC and ER to discuss the remedial actions to be taken; 7. Assess effectiveness of Contractor's remedial actions and keep IEC, EPD and ER informed of the results; 8. If exceedance stops, cease additional monitoring. 	<ol style="list-style-type: none"> 1. Discuss amongst ER, ET, and Contractor on the potential remedial actions; 2. Review Contractor's remedial actions whenever necessary to assure their effectiveness and advise the ER accordingly; 3. Supervise the implementation of remedial measures. 	<ol style="list-style-type: none"> 1. Confirm receipt of notification of failure in writing; 2. Notify Contractor; 3. In consultation with the IEC, agree with the Contractor on the remedial measures to be implemented; 4. Ensure remedial measures properly implemented; 5. If exceedance continues, consider what portion of the work is responsible and instruct the Contractor to stop that portion of work until the exceedance is abated. 	<ol style="list-style-type: none"> 1. Take immediate action to avoid further exceedance; 2. Submit proposals for remedial actions to IEC within 3 working days of notification; 3. Implement the agreed proposals; 4. Resubmit proposals if problem still not under control; 5. Stop the relevant portion of works as determined by the ER until the exceedances abated.

Event / Action Plan for Construction Noise Monitoring

Event	Action			
	ET	IEC	ER	Contractor
Action Level	<ol style="list-style-type: none"> 1. Notify IEC and Contractor; 2. Identify source, investigate the causes of exceedance and propose remedial measures; 3. Report the results of investigation to the IEC,ER and Contractor; 4. Discuss with the Contractor and formulate remedial measures; 5. Increase monitoring frequency to check mitigation effectiveness. 	<ol style="list-style-type: none"> 1. Review the analysed results submitted by the ET; 2. Review the proposed remedial measures by the Contractor and advise the ER accordingly; 3. Supervise the implementation of remedial measures. 	<ol style="list-style-type: none"> 1. Confirm receipt of notification of failure in writing; 2. Notify Contractor; 3. Require Contractor to propose remedial measures for the analysed noise problem; 4. Ensure remedial measures are properly implemented. 	<ol style="list-style-type: none"> 1. Submit noise mitigation proposals to IEC; 2. Implement noise mitigation proposals.

Event	Action			
	ET	IEC	ER	Contractor
Limit Level	<ol style="list-style-type: none"> 1. Inform IEC, ER, EPD and Contractor; 2. Identify source; 3. Repeat measurements to confirm findings; 4. Increase monitoring frequency; 5. Carry out analysis of Contractor's working procedures to determine possible mitigation to be implemented; 6. Inform IEC, ER and EPD the causes and actions taken for the exceedances; 7. Assess effectiveness of Contractor's remedial actions and keep IEC, EPD and ER informed of the results; 8. If exceedance stops, cease additional monitoring. 	<ol style="list-style-type: none"> 1. Discuss amongst ER, ET, and Contractor on the potential remedial actions; 2. Review Contractor's remedial actions whenever necessary to assure their effectiveness and advise the ER accordingly; 3. Supervise the implementation of remedial measures. 	<ol style="list-style-type: none"> 1. Confirm receipt of notification of failure in writing; 2. Notify Contractor; 3. Require Contractor to propose remedial measures for the analysed noise problem; 4. Ensure remedial measures properly implemented; 5. If exceedance continues, consider what portion of the work is responsible and instruct the Contractor to stop that portion of work until the exceedance is abated. 	<ol style="list-style-type: none"> 1. Take immediate action to avoid further exceedance; 2. Submit proposals for remedial actions to IEC within 3 working days of notification; 3. Implement the agreed proposals; 4. Resubmit proposals if problem still not under control; 5. Stop the relevant portion of works as determined by the ER until the exceedance is abated.

MATERIALAB CONSULTANTS LIMITED

Room 723 & 725, 7/F, Block B,
Profit Industrial Building,
1-15 Kwai Fung Crescent, Kwai Fong,
Hong Kong.

Tel : (852)-24508238
Fax : (852)-24508032
Email : mcl@fugro.com

The logo for MaterialLab, featuring the word "MaterialLab" in a bold, sans-serif font. The text is white and is set against a black background that consists of two thick horizontal bars, one above and one below the text.

Report No.: 0165/15/ED/0504

Appendix E

Waste Flow Table



Monthly Summary of Waste Flow Table for 2016 (year)

Name of Person completing the Record: Marko Chan

Month	Actual Quantities of Inert C&D Materials Generated Monthly					Actual Quantities of Non-inert C&D Wastes Generated Monthly				
	Total Quantity Generated	Broken Concrete	Reused in the Contract	Reused in other Projects	Disposed as Public Fill	Metals	Paper/ cardboard packaging	Plastics	Chemical Waste	Others, e.g. general refuse
		(see Note 1)						(see Note 2)		
	(in '000m ³)	(in '000m ³)	(in '000m ³)	(in '000m ³)	(in '000m ³)	(in '000 Kg)	(in '000 Kg)	(in '000 Kg)	(in '000 Kg)	(in '000m ³)
Jan	0.000	0	0	0	0.000	0	0.992	0	0	0.073
Feb	0.000	0	0	0	0.000	0	0	0	0	0.093
Mar	0.087	0	0	0	0.087	0	0.392	0	0	0.200
Apr	0.184	0	0	0	0.184	0	0.411	0	0	0.224
May	0.203	0	0	0	0.203	0	0	0	0	0.293
Jun	0.244	0	0	0	0.244	0	0	0	0	0.322
Jul										
Aug										
Sept										
Oct										
Nov										
Dec										
Total	0.718	0.000	0.000	0.000	0.718	0.000	1.795	0.000	0.000	1.205

Notes:

(1) Broken concrete for recycling into aggregates.

(2) Plastics refer to plastic bottles/containers, plastic sheets/foam from packaging material.

Monthly Summary of Excavated Marine Sediment for 2016 (year)

Month	Total Quantity of Excavated Marine Sediment Generated in '000m ³	Reused in this contract in '000m ³	Reused in other Projects in '000m ³	Disposed of at CMP in '000m ³
Jan	1.950	0	0	1.950
Feb	2.328	0	0	2.328
Mar	2.464	0	0	2.464
Apr	5.602	0	0	5.602
May	0	0	0	0
Jun	4.584	0	0	4.584
Jul				
Aug				
Sep				
Oct				
Nov				
Dec				
Total	16.928	0.000	0.000	16.928

MATERIALAB CONSULTANTS LIMITED

Room 723 & 725, 7/F, Block B,
Profit Industrial Building,
1-15 Kwai Fung Crescent, Kwai Fong,
Hong Kong.

Tel : (852)-24508238
Fax : (852)-24508032
Email : mcl@fugro.com

The logo for MaterialLab, featuring the word "MaterialLab" in a bold, sans-serif font. The text is centered between two thick, horizontal black bars.

Report No.: 0165/15/ED/0504

Appendix F

Environmental Licenses and Permits

Item	Permit/Licence Registration	Permit No.	Work Area	Application Date	Issue Date	Valid Date		Status	Remark
						From	To		
14	Construction Noise Permit Pursuant to Section 8(6) of the Noise Control Ordinance	GW-RS0607-16	Main Site Area	01-Jun-16	16-Jun-16	19-Jun-16	18-Sep-16	Valid	
15	Construction Noise Permit Pursuant to Section 8(6) of the Noise Control Ordinance	GW-RS0629-16	Floating Concrete Batching Plant	01-Jun-16	16-Jun-16	19-Jun-16	18-Dec-16	Valid	
16	Construction Noise Permit Pursuant to Section 8(6) of the Noise Control Ordinance	GW-RS0639-16	Main Site Area	01-Jun-16	16-Jun-16	15-Jul-16	14-Oct-16	Valid after GW-RS0348-16 expire	
17	Permit issued Under the Dumping at Sea Ordinance	EP/MD/17-029	East of Sha Chau (CMP Vd)	06-May-16	19-May-16	24-May-16	23-Jun-16	Superseded by EP/MD/17-040	
18	Permit issued Under the Dumping at Sea Ordinance	EP/MD/17-040	East of Sha Chau (CMP Vd)	30-May-16	13-Jun-16	14-Jun-16	13-Jul-16	Valid	

MATERIALAB CONSULTANTS LIMITED

Room 723 & 725, 7/F, Block B,
Profit Industrial Building,
1-15 Kwai Fung Crescent, Kwai Fong,
Hong Kong.

Tel : (852)-24508238
Fax : (852)-24508032
Email : mcl@fugro.com

The logo for MaterialLab, featuring the word "MaterialLab" in a bold, sans-serif font. The text is white and is set against a black rectangular background that has horizontal bars above and below it.

Report No.: 0165/15/ED/0504

Appendix G

Implementation Schedule for Environmental Mitigation Measures (EMIS)

Appendix G – Implementation Schedule of Environmental Mitigation Measures (EMIS)

EIA Ref.	EM&A Log Ref.	Recommended Mitigation Measures	Location of the measures	Implementation Status
Air Quality				
S5.5.6.1	A1	1) The contractor shall follow the procedures and requirements given in the Air Pollution Control (Construction Dust) Regulation	All construction sites	V
S5.5.6.2	A2	2) Proper watering of exposed spoil should be undertaken throughout the construction phase: <ul style="list-style-type: none"> Any excavated or stockpile of dusty material should be covered entirely by impervious sheeting or sprayed with water to maintain the entire surface wet and then removed or backfilled or reinstated where practicable within 24 hours of the excavation or unloading; Any dusty materials remaining after a stockpile is removed should be wetted with water and cleared from the surface of roads; A stockpile of dusty material should not extend beyond the pedestrian barriers, fencing or traffic cones. The load of dusty materials on a vehicle leaving a construction site should be covered entirely by impervious sheeting to ensure that the dusty materials do not leak from the vehicle; Where practicable, vehicle washing facilities with high pressure water jet should be provided at every discernible or designated vehicle exit point. The area where vehicle washing takes place and the road section between the washing facilities and the exit point should be paved with concrete, bituminous materials or hardcores; 	All construction sites	V
S5.5.6.2	A2	<ul style="list-style-type: none"> When there are open excavation and reinstatement works, hoarding of not less than 2.4m high should be provided as far as practicable along the site boundary with provision for public crossing. Good site practice shall also be adopted by the Contractor to ensure the conditions of the hoardings are properly maintained throughout the construction period; The portion of any road leading only to construction site that is within 30m of a vehicle entrance or exit should be kept clear of dusty materials, Surfaces where any pneumatic or power-driven drilling, cutting, polishing or other mechanical breaking operation takes place should be sprayed with water or a dust suppression chemical continuously; Any area that involves demolition activities should be sprayed with water or a dust suppression chemical immediately prior to, during and immediately after the activities so as to maintain the entire surface wet; Where a scaffolding is erected around the perimeter of a building under construction, effective dust screens, sheeting or netting should be provided to enclose the scaffolding from the ground floor level of the building, or a canopy should be provided from the first floor level up to the highest level of the scaffolding; Any skip hoist for material transport should be totally enclosed by impervious sheeting; Every stock of more than 20 bags of cement or dry pulverised fuel ash (PFA) should be covered entirely by impervious sheeting or placed in an area sheltered on the top 	All construction sites	V
S5.5.6.2	A2	<ul style="list-style-type: none"> Cement or dry PFA delivered in bulk should be stored in a closed silo fitted with an audible high level alarm which is interlocked with the material filling line and no overfilling is allowed; Loading, unloading, transfer, handling or storage of bulk cement or dry PFA should be carried out in a totally 	All construction sites	N/A

EIA Ref.	EM&A Log Ref.	Recommended Mitigation Measures	Location of the measures	Implementation Status
		enclosed system or facility, and any vent or exhaust should be fitted with an effective fabric filter or equivalent air pollution control system; and <ul style="list-style-type: none"> Exposed earth should be properly treated by compaction, turfing, hydroseeding, vegetation planting or sealing with latex, vinyl, bitumen, shotcrete or other suitable surface stabiliser within six months after the last construction activity on the construction site r part of the construction site where the exposed earth lies 		
S5.5.6.3	A3	3) The Contractor should undertake proper watering on all exposed spoil (with at least 8 times per day) throughout the construction phase.	All construction sites	√
S5.5.6.4	A4	4) Engineer to incorporate the controlled measures into the Particular Specification (PS) for the civil work. The PS should also draw the contractor's attention to the relevant latest Practice Notes issued by EPD.	All construction sites	√
S5.5.6.4	A5	5) Implement regular dust monitoring under EM&A programme during the construction stage.	Selected Representative dust monitoring station	√
S5.5.7.1	A6	The following mitigation measures should be adopted to prevent fugitive dust emissions for concrete batching plant; <ul style="list-style-type: none"> Loading, unloading, handling, transfer or storage of any dusty materials should be carried out in totally enclosed system; All dust-laden air or waste gas generated by the process operations should be properly extracted and vented to fabric filtering system to meet the emission limits for TSP; Vents for all silos and cement/pulverised fuel ash (PFA) weighing scale should be fitted with fabric filtering system; The materials which may generate airborne dusty emissions should be wetted by water spray system; All receiving hoppers should be enclosed on three sides up to 3m above unloading point; All conveyor transfer points should be totally enclosed; All access and route roads within the premises should be paved and wetted; and Vehicle cleaning facilities should be provided and used by all concrete trucks before leaving the premises to wash off any dust on the wheels and/or body 	Selected Representative dust monitoring station	N/A
S5.5.2.7	A7	The following mitigation measures should be adopted to prevent fugitive dust emissions at barging point: <ul style="list-style-type: none"> All road surface within the barging facilities will be paved; Dust enclosures will be provided for the loading ramp; Vehicles will be required to pass through designated wheels wash facilities; and Continuous water spray at the loading points 	All construction sites	√
Construction Nose (Air borne)				
S6.4.10	N1	1) Use of good site practices to limit noise emissions by considering the following: <ul style="list-style-type: none"> only well-maintained plant should be operated on-site and plant should be serviced regularly during the construction programme; machines and plant (such as trucks, cranes) that may be in intermittent use should be shut down between work periods or should be throttled down to a minimum; plant known to emit noise strongly in one direction, where possible, be orientated so that the noise is directed away from nearby NSRs; silencers or mufflers on construction equipment should be properly fitted and maintained during the construction works; 	All construction sites	√

EIA Ref.	EM&A Log Ref.	Recommended Mitigation Measures	Location of the measures	Implementation Status
		<ul style="list-style-type: none"> mobile plant should be sited as far away from NSRs as possible and practicable; material stockpiles, mobile container site office and other structures should be effectively utilised, where practicable, to screen noise from on-site construction activities. 		
S6.4.11	N2	2) Install temporary hoarding located on the site boundaries between noisy construction activities and NSRs. The conditions of the hoardings shall be properly maintained throughout the construction period.	All construction sites	V
S6.4.12	N3	3) Install movable noise barriers (typically density@14kg/m acoustic mat or full enclosure close to noisy plants including compressor, generators, saw.	For plant items listed in Appendix 6D of the EIA report at all construction sites	N/A
S6.4.13	N4	4) Select "Quiet plants" which comply with the BS 5228 Part 1 or TM standards.	For plant items listed in Appendix 6D of the EIA report at all construction site	V
S6.4.14	N5	5) Sequencing operation of construction plants where practicable	All construction sites where practicable	V
S5.1	N6	6) Implement a noise monitoring under EM&A programme.	Selected representative noise monitoring station	V
Sediment				
S7.3	S1	1) The requirements as recommended in ETWB TC 34/2002 Management of Dredged/Excavated Sediment shall be included in the Particular Specification as appropriate.	All construction sites	V
Waste Management (Construction Waste)				
S8.3.8	WM1	<p>Construction and Demolition Material</p> <p>The following mitigation measures should be implemented in handling the waste:</p> <ul style="list-style-type: none"> Maintain temporary stockpiles and reuse excavated fill material for backfilling and reinstatement; Carry out on-site sorting; Make provisions in the Contract documents to allow and promote the use of recycled aggregates where appropriate; Implement a trip-ticket system for each works contract to ensure that the disposal of C&D materials are properly documented and verified; and Implement an enhanced Waste Management Plan similar to E7WBTC (Works) No. 19/2005 - "Environmental Management on Construction Sites" to encourage on-site sorting of C&D materials and to minimize their generation during the course of construction. In addition, disposal of the C&D materials onto any sensitive locations such as agricultural lands, etc. should be avoided. The Contractor shall propose the final 	All construction sites	V

EIA Ref.	EM&A Log Ref.	Recommended Mitigation Measures	Location of the measures	Implementation Status
		disposal sites to the Project Proponent and get its approval before implementation		
S8.3.9- S8.3.11	WM2	<u>C&D Waste</u> <ul style="list-style-type: none"> • Standard formwork or pre-fabrication should be used as far as practicable in order to minimise the arising of C&D materials. The use of more durable formwork or plastic facing for the construction works should be considered. Use of wooden hoardings should not be used, as in other projects. Metal hoarding should be used to enhance the possibility of recycling. The purchasing of construction materials will be carefully planned in order to avoid over ordering and wastage. • The Contractor should recycle as much of the C&D materials as possible on-site. Public fill and C&D waste should be segregated and stored in different containers or skips to enhance reuse or recycling of materials and their proper disposal. Where practicable, concrete and masonry can be crushed and used as fill. Steel reinforcement bar can be used by scrap steel mills. Different areas of the sites should be considered for such segregation and storage. 	All construction sites	V
S8.2.12- S8.3.15	WM3	<u>Chemical Waste</u> <ul style="list-style-type: none"> • Chemical waste that is produced, as defined by Schedule 1 of the Waste Disposal (Chemical Waste) (General) Regulation, should be handled in accordance with the Code of Practice on the Packaging, Labelling and Storage of Chemical Wastes. • Containers used for the storage of chemical wastes should be suitable for the substance they are holding, resistant to corrosion, maintained in a good condition, and securely closed; have a capacity of less than 450 liters unless the specification has been approved by the EPD; and display a label in English and Chinese in accordance with instructions prescribed in Schedule 2 of the regulation. • The storage area for chemical wastes should be clearly labeled and used solely for the storage of chemical waste; enclosed on at least 3 sides; have an impermeable floor and bunding of sufficient capacity to accommodate 110% of the volume of the largest container or 20 % of the total volume of waste stored in that area, whichever is the greatest; have adequate ventilation; covered to prevent rainfall entering; and arranged so that incompatible materials are adequately separated. • Disposal of chemical waste should be via a licensed waste collector; be to a facility licensed to receive chemical waste, such as the Chemical Waste Treatment Centre which also offers chemical waste collection service and can supply the necessary storage containers; or be to a reuser of the waste, under approval from the EPD. 	All construction sites	V
S8.3.16	WM4	<u>Sewage</u> <ul style="list-style-type: none"> • Adequate numbers of portable toilets should be provided for the workers. The portable toilets should be maintained in a state which will not deter the workers from utilizing these portable toilets. Night soil should be collected by licensed collectors regularly. 	All construction sites	V
S8.3.17	WM5	<u>General Refuse</u> <ul style="list-style-type: none"> • General refuse generated on-site should be stored in enclosed bins or compaction units separately from construction and chemical wastes. • A reputable waste collector should be employed by the Contractor to remove general refuse from the site, separately from construction and chemical wastes, on a daily basis to minimize odour, pest and litter impacts. Burning of refuse on construction sites is prohibited by 	All construction sites	V

EIA Ref.	EM&A Log Ref.	Recommended Mitigation Measures	Location of the measures	Implementation Status
		<p>law.</p> <ul style="list-style-type: none"> • Aluminium cans are often recovered from the waste stream by individual collectors if they are segregated and made easily accessible. Separate labelled bins for their deposit should be provided if feasible. • Office wastes can be reduced through the recycling of paper if volumes are large enough to warrant collection. Participation in a local collection scheme should be considered by the Contractor. • Training should be provided to workers about the concepts of site cleanliness and appropriate waste management procedure, including reduction, reuse and recycling of wastes. 		
Water Quality (Construction Phase)				
S9.11.1.7	W2	<p><u>Land Works</u></p> <p>General construction activities on land should also be governed by standard good working practice. Specific measures to be written into the works contracts should include:</p> <ul style="list-style-type: none"> • wastewater from temporary site facilities should be controlled to prevent direct discharge to surface or marine waters; • sewage effluent and discharges from on-site kitchen facilities shall be directed to Government sewer in accordance with the requirements of the WPCO or collected for disposal offsite. The use of soakaways shall be avoided; • storm drainage shall be directed to storm drains via adequately designed sand/silt removal facilities such as sand traps, silt traps and sediment basins. Channels, earth bunds or sand bag barriers should be provided on site to properly direct stormwater to such silt removal facilities. Catchpits and perimeter channels should be constructed in advance of site formation works and earthworks; • silt removal facilities, channels and manholes shall be maintained and any deposited silt and grit shall be removed regularly, including specifically at the onset of and after each rainstorm; • temporary access roads should be surfaced with crushed stone or gravel; • rainwater pumped out from trenches or foundation excavations should be discharged into storm drains via silt removal facilities; • measures should be taken to prevent the washout of construction materials, soil, silt or debris into any drainage system; • open stockpiles of construction materials (e.g. aggregates and sand) on site should be covered with tarpaulin or similar fabric during rainstorms; • manholes (including any newly constructed ones) should always be adequately covered and temporarily sealed so as to prevent silt, construction materials or debris from getting into the drainage system, and to prevent storm run-off from getting into foul sewers; • discharges of surface run-off into foul sewers must always be prevented in order not to unduly overload the foul sewerage system; 	Land-based works area	V
S9.11.1.7	W2	<ul style="list-style-type: none"> • all vehicles and plant should be cleaned before they leave the construction site to ensure that no earth, mud or debris is deposited by them on roads. A wheel washing bay should be provided at every site exit; • wheel wash overflow shall be directed to silt removal facilities before being discharged to the storm drain; • the section of construction road between the wheel 	Land-based works area	V

EIA Ref.	EM&A Log Ref.	Recommended Mitigation Measures	Location of the measures	Implementation Status
		<p>washing bay and the public road should be surfaced with crushed stone or coarse gravel;</p> <ul style="list-style-type: none"> • wastewater generated from concreting, plastering, Internal decoration, cleaning work and other similar activities, shall be screened to remove large objects; • vehicle and plant servicing areas, vehicle wash bays and lubrication facilities shall be located under roofed areas. The drainage in these covered areas shall be connected to foul sewers via a petrol interceptor in accordance with the requirements of the WPCO or collected for off site disposal; • the contractors shall prepare an oil / chemical cleanup plan and ensure that leakages or spillages are contained and cleaned up immediately; • waste oil should be collected and stored for recycling or disposal, in accordance with the Waste Disposal Ordinance; • all fuel tanks and chemical storage areas should be provided with locks and be sited on sealed areas. The storage areas should be surrounded by bunds with a capacity equal to 110% of the storage capacity of the largest tank; and • surface run-off from bunded areas should pass through oil/grease traps prior to discharge to the stormwater system. 		
Ecology (Construction Phase)				
S10.7	E4	<ul style="list-style-type: none"> • Watering to reduce dust generation; prevention of siltation of freshwater habitats; Site runoff should be desilted, to reduce the potential for suspended sediments, organics and other contaminants to enter streams and standing freshwater 	Land-based works areas	V
S10.7	E5	<ul style="list-style-type: none"> • Good site practices, including strictly following the permitted works hours, using quieter machines where practicable, and avoiding excessive lightings during night time 	Land-based works areas	V
S10.7	E8	<ul style="list-style-type: none"> • Control vessel speed • Skipper training • Predefined and regular routes for working vessels; avoid Brother Islands. 	Marine Traffic	V
Fisheries				
S11.7	F4	<ul style="list-style-type: none"> • Maritime Oil Spill Response Plan (MOSRP); • Contingency plan. 	HKBCF	V
Landscape & Visual (Detailed Design Phase)				
S14.3.3.1	LV1	<p>General design measures include:</p> <ul style="list-style-type: none"> • Roadside planting and planting along the edge of the HKBCF Island is proposed; • Transplanting of mature trees in good health and amenity value where appropriate and reinstatement of areas disturbed during construction by compensatory hydro-seeding and planting; • Protection measures for the trees to be retained during construction activities; • Optimizing the sizes and spacing of the bridge columns; • Fine-tuning the location of the bridge columns to avoid visually-sensitive locations; • Providing planting area around peripheral of HKBCF for tree planting screening effect; • Providing salt-tolerant native trees along the planter strip at affected seawall and newly reclaimed coastline; • For HKBCF, providing aesthetic architectural design on the related buildings (e.g. similar materials for PCB building facade to Airport buildings, roof planting and subtle materials for other facilities buildings and so on), and the related infrastructure (e.g. parapet planting and 	HKBCF	V

EIA Ref.	EM&A Log Ref.	Recommended Mitigation Measures	Location of the measures	Implementation Status
		transparent cover for elevated footbridges) to provide harmonious atmosphere of the HKBCF; and <ul style="list-style-type: none"> • Fine-tuning the sizes of the structural members to minimize the bulkiness of buildings and adjustment of building arrangement to minimise disturbance to surrounding vegetation in the HKBCF. 		
Landscape & Visual (Construction Phase)				
S14.3.3.3	LV2	Mitigate both Landscape and Visual Impacts G1. Grass-hydroseed bare soil surface and stock pile areas. G2. Add planting strip and automatic irrigation system if appropriate at some portions of bridge footbridge to screen bridge and traffic. G3. Not applicable as this is for HKLR. G4. For HKBCF, providing aesthetic architectural design on the related buildings (e.g. similar materials for PCB building facade to Airport buildings, roof planting and subtle materials for other facilities buildings and so on), and the related infrastructure (e.g. parapet planting and transparent cover for elevated footbridges) to provide harmonious atmosphere of the HKBCF G5. Vegetation reinstatement and upgrading to disturbed areas G6. Maximizing new tree shrub and other vegetation planting to compensate tree felled and vegetation removed G7. Providing planting area around peripheral of HKBCF for tree planting screening effect; G8. Plant salt-tolerant native and shrubs etc along the planter strip at affected seawall. G9. Reserve of loose natural granite rocks for re-use, Provide new coastline to adopt "natural-look" by means of using armour rocks in the form of natural rock materials and planting strip area accommodating screen buffer to enhance "natural-look" of the new coastline.	HKBCF	N/A
S14.3.3.3	LV3	<u>Mitigate Visual Impacts</u> V1. Minimize time for construction activities during construction period. V2. Provide screen hoarding at the portion of the project site / works areas / storage areas near VSRs who have close low-level views to the Project during HKBCF construction.	HKBCF	N/A
EM&A				
S15.2.2	EM1	An Independent Environmental Checker needs to be employed as per the EM&A Manual	All construction sites	V
S15.5 – S15.6	EM2	1) An Environmental Team needs to be employed as per the EM&A Manual. 2) Prepare a systematic Environmental Management Plan to ensure effective implementation of the mitigation measures. 3) An environmental impact monitoring needs to be implementing by the Environmental Team to ensure all the requirements given in the EM&A Manual are fully complied with.	All construction sites	V

Legend: V = implemented;

x = not implemented;

N/A = not applicable

MATERIALAB CONSULTANTS LIMITED

Room 723 & 725, 7/F, Block B,
Profit Industrial Building,
1-15 Kwai Fung Crescent, Kwai Fong,
Hong Kong.

Tel : (852)-24508238
Fax : (852)-24508032
Email : mcl@fugro.com

The logo for MaterialLab, featuring the word "MaterialLab" in a bold, sans-serif font. The text is white and is set against a black rectangular background that has horizontal bars above and below it.

Report No.: 0165/15/ED/0504

Appendix H

Statistics on Environmental Complaints, Notification of Summons and Successful Prosecutions

MATERIALAB CONSULTANTS LIMITED

Room 723 & 725, 7/F, Block B,
Profit Industrial Building,
1-15 Kwai Fung Crescent, Kwai Fong,
Hong Kong.

Tel : (852)-24508238
Fax : (852)-24508032
Email : mcl@fugro.com

Materialab

Report No.: 0165/15/ED/0504

Appendix H –

Statistics on Environmental Complaints, Notifications of Summons and Successful Prosecutions

Reporting Period	Cumulative Statistics		
	Complaints	Notifications of Summons	Successful Prosecutions
This reporting period	0	0	0
From commencement date of construction to end of reporting month	1	0	0

MATERIALAB CONSULTANTS LIMITED

Room 723 & 725, 7/F, Block B,
Profit Industrial Building,
1-15 Kwai Fung Crescent, Kwai Fong,
Hong Kong.

Tel : (852)-24508238
Fax : (852)-24508032
Email : mcl@fugro.com

The logo for MaterialLab, featuring the word "MaterialLab" in a bold, sans-serif font. The text is white and is set against a black background that consists of two thick horizontal bars, one above and one below the text.

Report No.: 0165/15/ED/0504

Appendix I

Environmental Site Inspection Schedule

MATERIALAB CONSULTANTS LIMITED

Room 723 & 725, 7/F, Block B,
 Profit Industrial Building,
 1-15 Kwai Fung Crescent, Kwai Fong,
 Hong Kong.

Tel : (852)-24508238
 Fax : (852)-24508032
 Email : mcl@fugro.com



Report No.: 0165/15/ED/0504

Contract No. HY/2013/03
HZMB HKBCF – Vehicle Clearance Plazas and Ancillary Buildings and Facilities
Weekly Environmental Site Inspection Schedule

Environmental Site Inspection Schedule for June 2016

Jun-2016						
Sun	Mon	Tue	Wed	Thu	Fri	Sat
			1	2	3 Environmental Site Inspection	4
5	6	7	8	9 Public Holiday	10 Environmental Site Inspection	11
12	13	14	15	16	17 Environmental Site Inspection	18
19	20	21	22	23	24 Environmental Site Inspection	25
26	27	28	29	30 Environmental Site Inspection		

Tentative Environmental Site Inspection Schedule for July 2016

Jul-2016						
Sun	Mon	Tue	Wed	Thu	Fri	Sat
					1 Public Holiday	2
3	4	5	6	7	8 Environmental Site Inspection	9
10	11	12	13	14	15 Environmental Site Inspection	16
17	18	19	20	21	22 Environmental Site Inspection	23
24	25	26	27	28	29 Environmental Site Inspection	30
31						