

## **MATERIALAB CONSULTANTS LIMITED**

Room 723 & 725, 7/F, Block B,  
Profit Industrial Building,  
1-15 Kwai Fung Crescent, Kwai Fong,  
Hong Kong.

Tel : (852)-24508238  
Fax : (852)-24508032  
Email : mcl@fugro.com

The logo for MaterialLab, featuring the word "MaterialLab" in a bold, sans-serif font. The text is white and is set against a black rectangular background that has horizontal bars extending to the left and right, creating a stylized, framed effect.

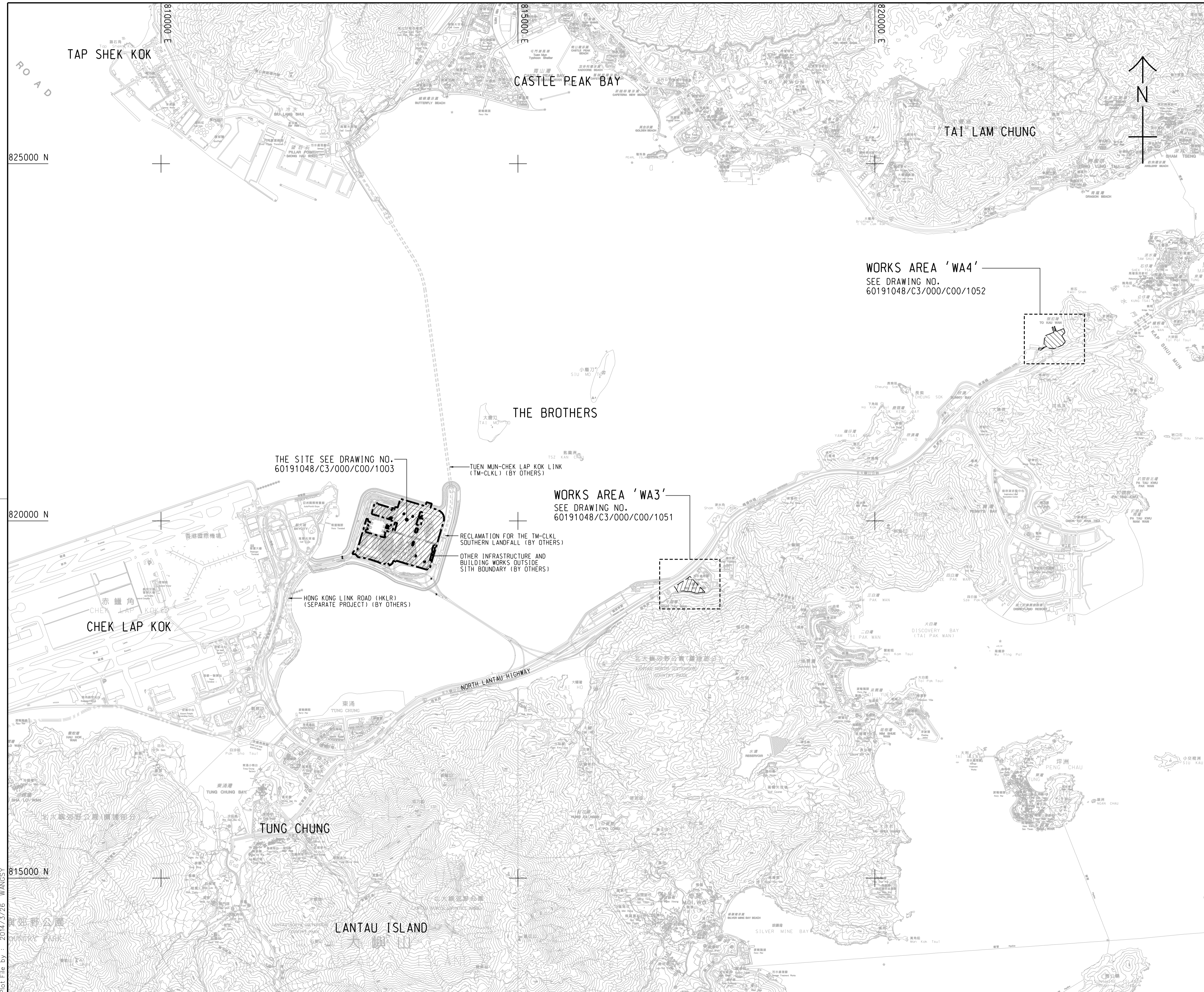
---

Report No.: 0165/15/ED/0728

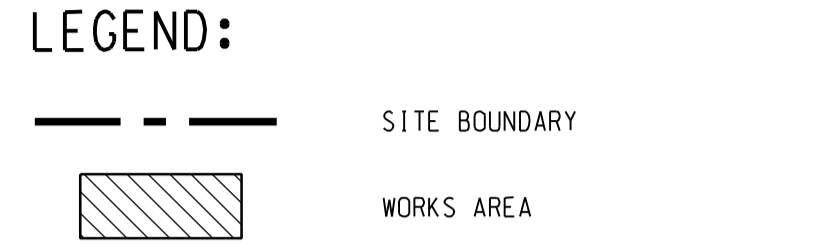
### **Appendix A**

#### **Location of Works Areas**





- NOTES:**
- COORDINATES ARE RELATED TO HONG KONG METRIC GRID (1980).
  - DIMENSIONS ARE IN MILLIMETER AND CHAINAGE ARE IN METRES UNLESS OTHERWISE SHOWN.
  - THIS DRAWING SHALL BE READ IN CONJUNCTION WITH DRAWING NOS. 60191048/C3/000/C00/1051 TO 1053.



THE SITE SEE DRAWING NO. 60191048/C3/000/C00/1003

TUEN MUN-CHEK LAP KOK LINK (TM-CKLK) (BY OTHERS)

WORKS AREA 'WA3'  
SEE DRAWING NO. 60191048/C3/000/C00/1051

RECLAMATION FOR THE TM-CKLK SOUTHERN LANDFALL (BY OTHERS)  
OTHER INFRASTRUCTURE AND BUILDING WORKS OUTSIDE SITE BOUNDARY (BY OTHERS)

HONG KONG LINK ROAD (HKLR) (SEPARATE PROJECT) (BY OTHERS)

WORKS AREA 'WA4'  
SEE DRAWING NO. 60191048/C3/000/C00/1052

- TENDER DRAWING		BSC	SCI	MAR. 14
REV. 修改	DESCRIPTION 內容摘要	D.C. 審核	C.C. 校對	DATE 日期

**路政署 HIGHWAYS DEPARTMENT**  
**港珠澳大橋香港工程管理處**  
 Hong Kong - Zhuhai - Macao Bridge Hong Kong Project Management Office

HONG KONG-ZHUHAI-MACAO BRIDGE  
 HONG KONG BOUNDARY CROSSING FACILITIES  
 - VEHICLE CLEARANCE PLAZAS AND  
 ANCILLARY BUILDINGS AND FACILITIES

**SITE LOCATION PLAN**

**AECOM** +  
 Rogers Stirk Harbour + Partners  
**Aedas**  
 BURO HAPPOLD ATKINS ADI +

DRG. NO. 60191048/C3/000/C00/1000  
 圖紙編號

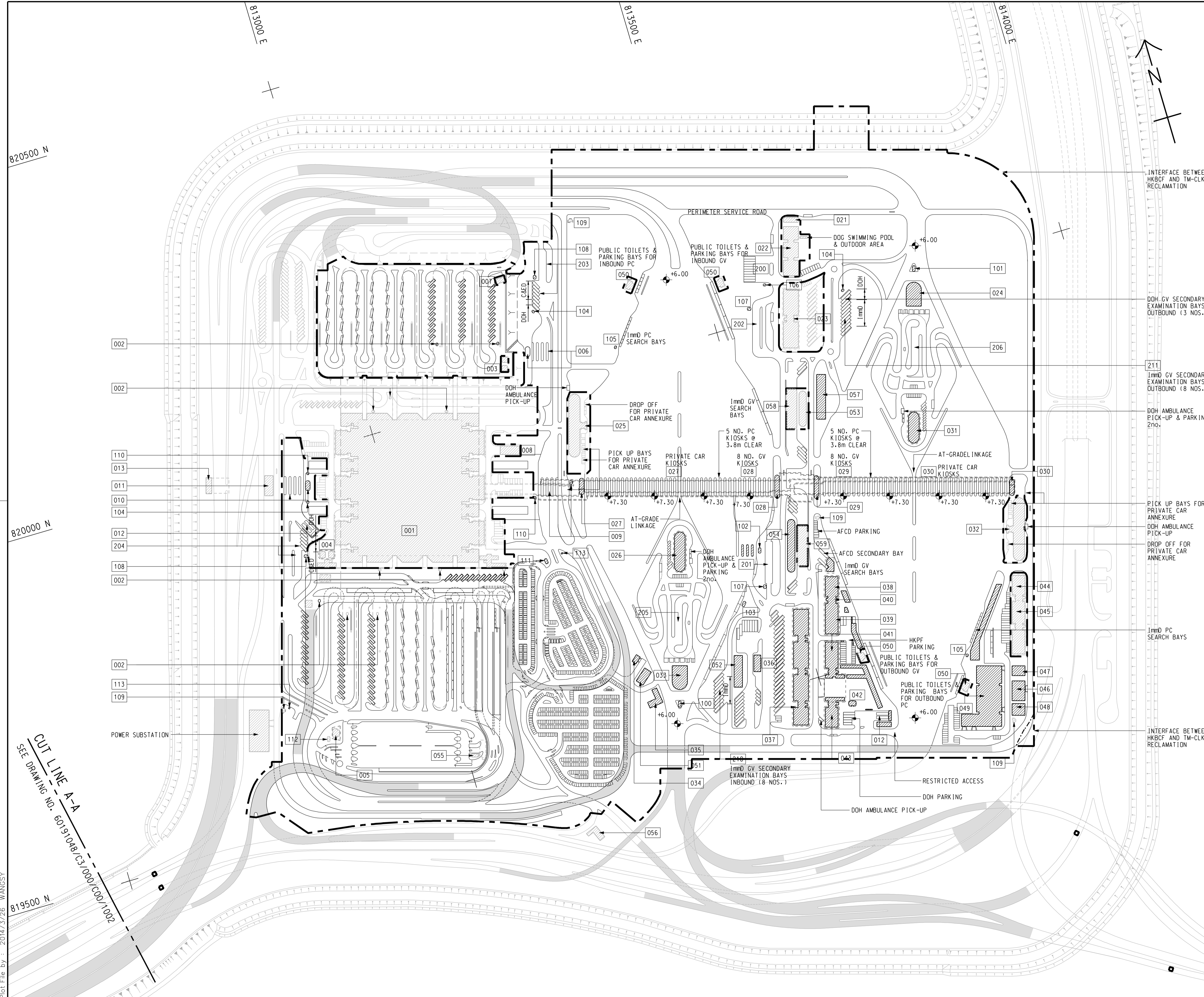
DESIGNED BY 設計	CONTRACT NO. 合約編號	P. Dir. APPROVED 批准人
BWCW	HY/2013/03	TKH

DRAWN BY 繪圖	STATUS 階段
WSY	

SCALE 比例 A1 1 : 25000  
 DIMENSIONS ARE IN 尺寸單位 METRES  
 © COPYRIGHT RESERVED 版權所有

Plot File by : 2014/3/26 WANGSY





**NOTE :**

1. THIS DRAWING TO BE READ IN CONJUNCTION WITH DRAWING NO. 60191048/C3/000/C00/1003.

**LEGEND :**

- SITE BOUNDARY
- VIADUCT
- BUILDING/FACILITIES

INTERFACE BETWEEN HKBCF AND TM-CLKL RECLAMATION

DOH GV SECONDARY EXAMINATION BAYS OUTBOUND (3 NOS.)

1mm0 GV SECONDARY EXAMINATION BAYS OUTBOUND (8 NOS.)

DOH AMBULANCE PICK-UP & PARKING 2no.

PICK UP BAYS FOR PRIVATE CAR ANNEXURE  
DOH AMBULANCE PICK-UP  
DROP OFF FOR PRIVATE CAR ANNEXURE

1mm0 PC SEARCH BAYS

INTERFACE BETWEEN HKBCF AND TM-CLKL RECLAMATION

- TENDER DRAWING		BWCW SCI	MAR. 14
REV. 修改	DESCRIPTION 內容摘要	D.C. 校核	DATE 日期

**路政署 HIGHWAYS DEPARTMENT**  
**港珠澳大桥香港工程管理处**  
 Hong Kong - Zhuhai - Macao Bridge Hong Kong Project Management Office

HONG KONG-ZHUHAI-MACAO BRIDGE  
 HONG KONG BOUNDARY CROSSING FACILITIES  
 - VEHICLE CLEARANCE PLAZAS AND  
 ANCILLARY BUILDINGS AND FACILITIES

**Figure 1-1**  
**Current Layout Plan**

SHEET 1 OF 2

**AECOM** **Aedas**  
 Rogers Stirk Harbour + Partners  
 BURO HAPPOLD ATKINS ADI

DRG. NO. 60191048/C3/000/C00/1001  
 圖紙編號

DESIGNED BY 設計	CONTRACT NO. 合約編號	P. DIR. APPROVED 批准人
BWCW	HY/2013/03	TKH

DRAWN BY 繪圖	STATUS 階段
WSY	初步

SCALE 比例 A1 1 : 2500  
 DIMENSIONS ARE IN 尺寸單位 METRES

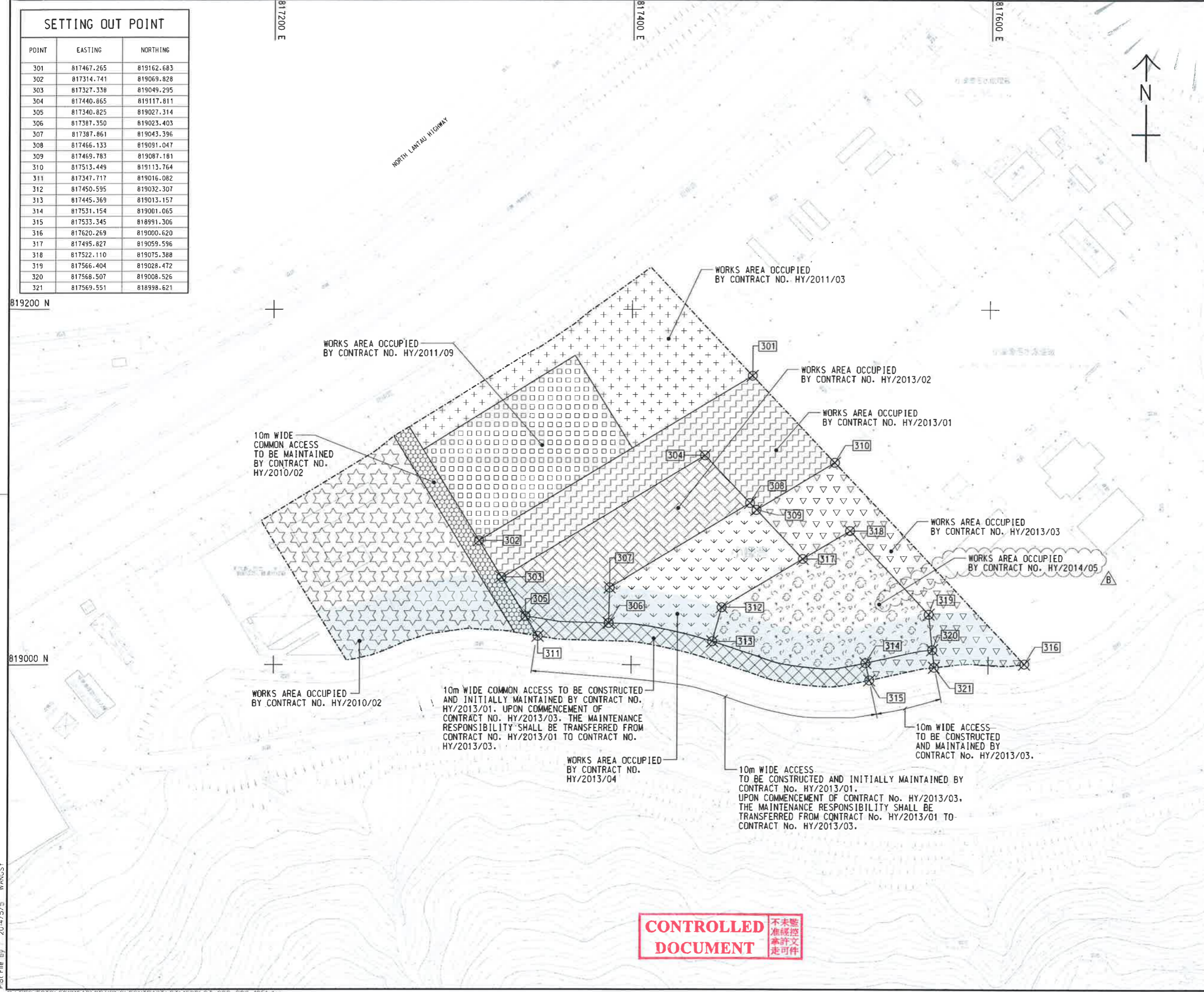
© COPYRIGHT RESERVED  
 版權所有

CUT LINE A-A  
 SEE DRAWING NO. 60191048/C3/000/C00/1002

Plot File by : 2014/3/26 WANGSY



SETTING OUT POINT		
POINT	EASTING	NORTHING
301	817467.265	819162.683
302	817314.741	819069.828
303	817327.338	819049.295
304	817440.865	819117.811
305	817340.825	819027.314
306	817387.350	819023.403
307	817387.861	819043.396
308	817466.133	819091.047
309	817469.783	819087.181
310	817513.449	819113.764
311	817347.717	819016.082
312	817450.595	819032.307
313	817445.369	819013.157
314	817531.154	819001.065
315	817533.345	818991.306
316	817620.269	819000.620
317	817495.827	819059.596
318	817522.110	819075.388
319	817566.404	819028.472
320	817568.507	819008.526
321	817569.551	818998.621



LOCATION PLAN  
SCALE 1 : 25000

- NOTES:
- COORDINATES ARE RELATED TO HONG KONG METRIC GRID (1980).
  - DIMENSIONS ARE IN MILLIMETER AND CHAINAGE ARE IN METRES UNLESS OTHERWISE SHOWN.

LEGEND:

	WORKS AREA BOUNDARY
	PORTION 3.1
	PORTION 3.2
	PORTION 3.3
	PORTION 3.4
	PORTION 3.5
	PORTION 3.6
	PORTION 3.7
	PORTION 3.8
	PORTION 3.9
	PORTION 3.10
	NON-BUILDING AREA 8200m <sup>2</sup> (WHOLE)

**FOR CONSTRUCTION**

C	WORKING DRAWING	BWCW SCI	MAY. 15
B	TENDER ADDENDUM NO. 2	BWCW SCI	MAY. 14
A	TENDER ADDENDUM NO. 1	BWCW SCI	APR. 14
-	TENDER DRAWING	BWCW SCI	MAR. 14
REV.	DESCRIPTION	REV.	DATE
01	ISSUED FOR TENDER	01	15/03/14

HONG KONG HIGHWAYS DEPARTMENT  
 香港特別行政區交通事務局  
 港珠澳大橋香港工務管理處  
 Hong Kong - Zhuhai - Macao Bridge Hong Kong Project Management Office

HONG KONG-ZHUHAI-MACAO BRIDGE  
 HONG KONG BOUNDARY CROSSING FACILITIES  
 - VEHICLE CLEARANCE PLAZAS AND  
 ANCILLARY BUILDINGS AND FACILITIES

WORKS AREA WA3

**AECOM** +  
**Aedas** +  
 Rogers Stirk Harbour + Partners  
 BURO HAPPOLD ATKINS ADI +

DRG. NO. 圖紙編號 60191048/C3/000/C00/1051C

DESIGNED BY 設計	CONTRACT NO. 合約編號	A. Dir. APPROVED 核准人
BWCW	HY/2013/03	TKH
DRAWN BY 繪圖	STATUS 狀況	
WSY	WORKING DRAWING	
SCALE 比例		
A1 : 1000		
DIMENSIONS ARE IN 尺寸單位		
METRES		

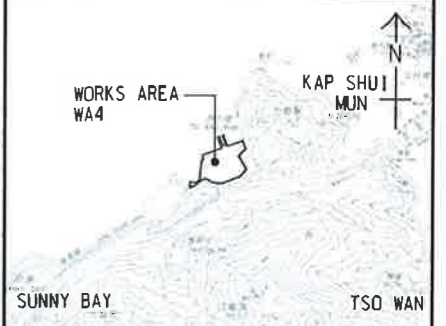
© COPYRIGHT RESERVED 版權所有

**CONTROLLED DOCUMENT** 不准未經核准修改  
 不准未經核准修改  
 不准未經核准修改



SETTING OUT POINT

POINT	EASTING	NORTHING
401	822488.151	822632.315
402	822640.593	822689.415
403	822515.608	822559.848
404	822610.940	822599.642
405	822629.428	822607.359
406	822526.988	822529.813
407	822618.348	822567.950
408	822542.232	822489.581
409	822584.983	822507.426
410	822606.866	822516.561
411	822560.278	822441.956
412	822602.949	822460.010
413	822621.914	822467.959
414	822624.130	822470.998
415	822651.725	822508.856
416	822644.758	822521.192



LOCATION PLAN  
SCALE 1 : 25000

- NOTES:
- COORDINATES ARE RELATED TO HONG KONG METRIC GRID (1980).
  - DIMENSIONS ARE IN MILLIMETER AND CHAINAGE ARE IN METRES UNLESS OTHERWISE SHOWN.

LEGEND:

	WORKS AREA BOUNDARY
	PORTION 4.1
	PORTION 4.2
	PORTION 4.3
	PORTION 4.4
	PORTION 4.5
	PORTION 4.6
	PORTION 4.7
	PORTION 4.8
	PORTION 4.9

CONTROLLED DOCUMENT

FOR CONSTRUCTION

REV. NO.	DESCRIPTION	DATE	BY	CHECKED
C	WORKING DRAWING	MAY. 15	BWCW	SCI
B	TENDER ADDENDUM NO. 2	MAY. 14	BWCW	SCI
A	TENDER ADDENDUM NO. 1	APR. 14	BWCW	SCI
-	TENDER DRAWING	MAR. 14	BWCW	SCI

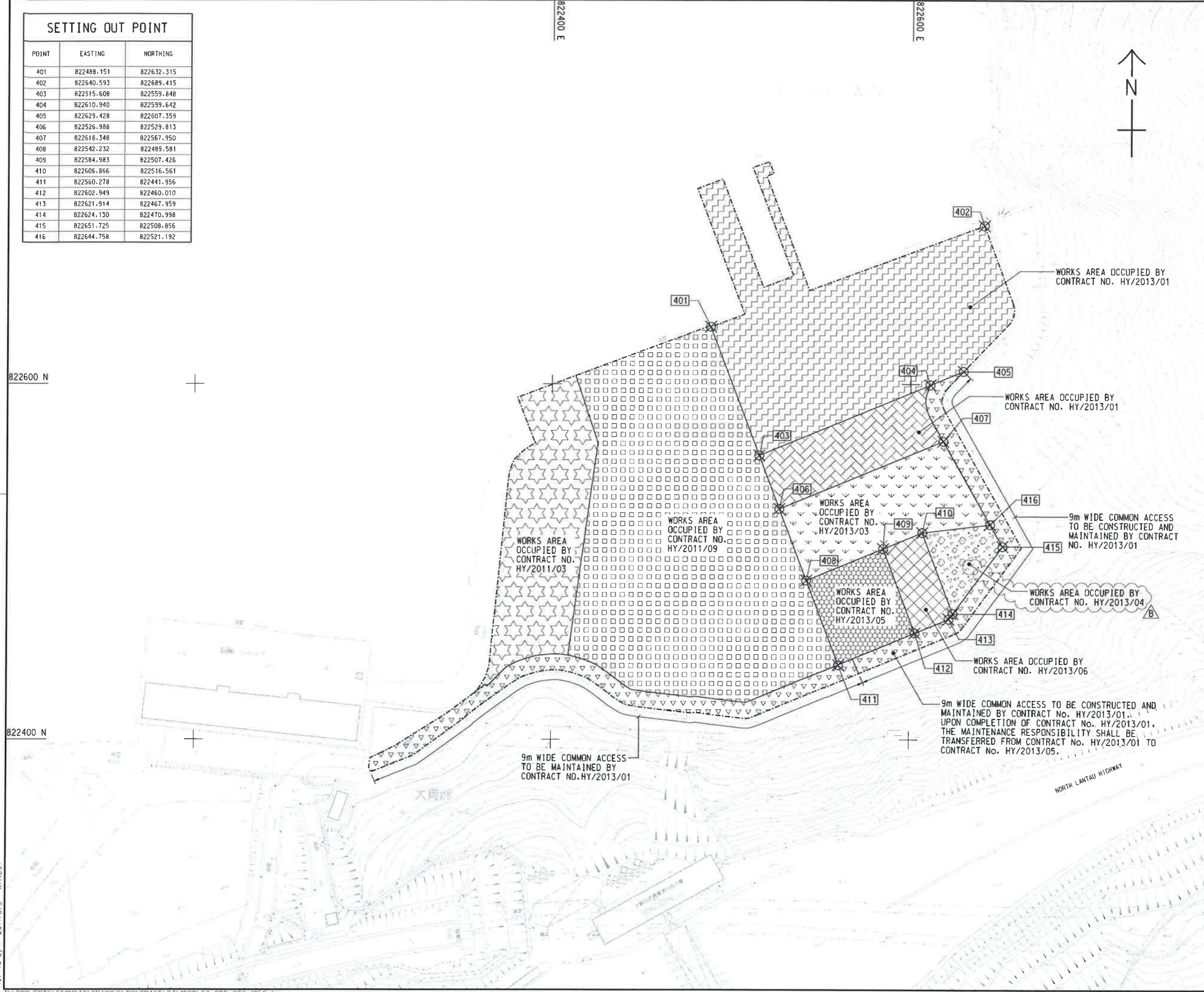
HONG KONG-HUAI-MACAO BRIDGE  
HONG KONG BOUNDARY CROSSING FACILITIES  
- VEHICLE CLEARANCE PLAZAS AND ANCILLARY BUILDINGS AND FACILITIES

WORKS AREA WA4

**AECOM** **Aedas**  
Rogers Stirk Harbour + Partners  
BURO HAPPOLD ATKINS ADI

DRG. NO. 60191048/C3/000/C00/1052C

DESIGNED BY BWCW	CONTRACT NO. HY/2013/03	APPROVED BY TKH
DRAWN BY WSY	STATUS WORKING DRAWING	
SCALE A1 1 : 1000	COPYRIGHT RESERVED	



Plot File by: 2014/5/5 WANGSY