

## **MATERIALAB CONSULTANTS LIMITED**

Room 723 & 725, 7/F, Block B,  
Profit Industrial Building,  
1-15 Kwai Fung Crescent, Kwai Fong,  
Hong Kong.

Tel : (852)-24508238  
Fax : (852)-24508032  
Email : mcl@fugro.com

The logo for MaterialLab, featuring the word "MaterialLab" in a bold, sans-serif font. The text is centered between two thick, horizontal black bars.

---

Report No.: 0165/15/ED/0761

### **Appendix C**

### **Construction Programme**

Activity ID		Activity Name		2017				
				Mar	Apr	May	Jun	Jul
<b>HKBCF - VCP &amp; Ancillary Buildings and Facilities, DWP Rev. 3B, DD 31 Mar. 17</b>								
<b>CONTRACT DATES</b>								
<b>Key Dates</b>								
A1020	KD2 Achievement of Stage 2 of the Works (460 days; 12 Jul. 16 )							◆ KD2 Achievement of Stage 2 of the Wor
A1070	KD7 Achievement of Stage 6 of the Works (500.5 days; 22 Aug. 16 EOT 1)				◆ KD7 Achievement of Stage 6 of the Works (500.5 days; 22 Aug. 16 EOT 1)			
A1080	KD8 Achievement of Stage 7 of the Works (520 days; 10 Sep. 16)				◆ KD8 Achievement of Stage 7 of the Works (520 days; 10 Sep. 16)			
<b>Site Access &amp; Possession</b>								
<b>Possession of Portion of Site</b>								
A0040	Possession of Portion C (<=100 days)					◆ Possession of Portion C (<=100 days)		
A0070	Possession of Portion F (<=220 days)					◆ Possession of Portion F (<=220 days)		
A0110	Possession of Portion J (<=320 days)			◆ Possession of Portion J (<=320 days)				
A0150	Possession of Portion N (<=345 days)			◆ Possession of Portion N (<=345 days)				
A0160	Possession of Portion P (<=502 days)			◆ Possession of Portion P (<=502 days)				
A0170	Possession of Portion Q (<=500 days)					◆ Possession of Portion Q (<=500 days)		
A0180	Possession of Portion R (<=610 days)						◆ Possession of Portion R (<=610 days)	
<b>Access to Locations of the Site</b>								
A0210	Contract Date for Access to Location 1.1 (490 days)					◆ Contract Date for Access to Location 1.1 (490 days)		
A0230	Contract Date for Access to Location 1.3 (488 days)					◆ Contract Date for Access to Location 1.3 (488 days)		
A0240	Contract Date for Access to Location 1.4 (488 days)					◆ Contract Date for Access to Location 1.4 (488 days)		
A0280	Contract Date for Access to Location 1.7A (610 days)				◆ Contract Date for Access to Location 1.7A (610 days)			
A0290	Contract Date for Access to Location 1.7B (610 days)				◆ Contract Date for Access to Location 1.7B (610 days)			
A0300	Contract Date for Access to Location 1.7C (610 days)				◆ Contract Date for Access to Location 1.7C (610 days)			
A0310	Contract Date for Access to Location 1.8 PCB (Basement level up to ground floor slab) (395 days)				◆ Contract Date for Access to Location 1.8 PCB (Basement level up to ground floor slab) (395 days)			
A0330	Contract Date for Access to External Area for Contract HY/2013/01 for ELV System Installation (570 days)					◆ Contract Date for Access to External Area for Contract HY/2013/01 for ELV System Installation (570 days)		
A0340	Contract Date for Access to External Area for Contract HY/2013/02 for ELV System Installation (560 days)					◆ Contract Date for Access to External Area for Contract HY/2013/02 for ELV System Installation (560 days)		
A0350	Contract Date for Access to External Area for Contract HY/2013/04 ELV System Installation (560 days)					◆ Contract Date for Access to External Area for Contract HY/2013/04 ELV System Installation (560 days)		
<b>PORTION A1</b>								
<b>Portion A1 Structures</b>								
<b>Bridge A9</b>								
<b>Pier &amp; Abutment</b>								
SA9330	Pier P903							
SA9340	Pier P902							
SA9350	Abutment A901							
<b>Structure Deck</b>								
SA9410	Deck on A905, P904 + Stressing							
SA9415	Falsework for Deck P904 - P903							
SA9420	Deck on P904, P903 + Stressing							
SA9430	Falsework for Deck P903 - P902							
SA9440	Deck on P903 & P902 + Stressing							
SA9450	Falsework for Deck P902 - A901							
SA9460	Deck on P902 & A901 + Stressing							
<b>Retaining Wall W8-1</b>								
SW8110	Construction of Retaining Wall W8-1 (U-shape, 4 bays)							
SW8120	Backfilling W8-1							
SW8130	Parapet W8-1 (16 pour) & E&M Works							
<b>Retaining Wall W9-1</b>								

- Actual Work
- Remaining Work
- Critical
- ◆ Milestone

**THREE MONTH ROLLING PROGRAMME  
VEHICLE CLEARANCE PLAZAS AND ANCILLARY BUILDINGS AND FACILITIES**

Date	Revision	Checked	Approved
01-Feb-17	3MRP updated as of 31 Jan. 2017	ZJ	
28-Feb-17	3MRP updated as of 28 Feb. 2017	ZJ	
31-Mar-17	3MRP updated as of 31 Mar. 2017	ZJ	

Activity ID	Activity Name	2017				
		Mar	Apr	May	Jun	Jul
SW9110	Construction of Retaining Wall W9-1 (U-shape, 4 bays)	[Green bar from Mar to May]				
SW9120	Backfilling W9-1	[Green bar from Jun to Jul]				
<b>047 - Fresh Water Pumping Station, Portion A1 &amp; A2</b>						
A04740	Water Tank Construction	[Blue bar from Mar to Apr]				
A04750	Pump House Construction	[Red bar from Mar to Apr]				
A04752	Water-tightness Test for Water Tank	[Green bar from Apr to May]				
A04760	Parapet Wall at Roof Slab & Finishing	[Red bar from May to Jun]				
A04770	BS installation + E&M (Degree 2)	[Red bar from May to Jun]				
A04780	BS installation + E&M (Degree 3)	[Green bar from Jun to Jul]				
A04790	T&C for BS & Pumps	[Green bar from Jun to Jul]				
<b>Test &amp; Commission</b>						
B04730	Submission & Issue of WW046 IV, V (Inside Services & FS)	[Red bar from May to Jun]				
B04740	WSD Inspection	[Red bar from Jun to Jul]				
<b>049 - Sewage Treatment Plant, Portion A1 &amp; A2</b>						
B04980	Backfilling + Removing 3rd Strut of ELS1	[Blue bar from Mar to Apr]				
B04990	Constructing Wall Stem for Equalization Tanks	[Red bar from Mar to Jun]				
C04910	Water-tightness Test for Equalization Tanks	[Red bar from Jun to Jul]				
C04940	Constructing Base Slab of Sludge Holding Tanks	[Blue bar in Mar]				
C04950	Backfilling + Removal Strut of ELS2	[Blue bar in Mar]				
C04960	Constructing Wall Stem of Sludge Holding Tanks	[Red bar from Mar to Apr]				
C04970	Water-tightness Test for Sludge Holding Tanks	[Red bar from May to Jun]				
C04990	Backfilling + Removal of ELS2	[Red bar from May to Jun]				
D04930	Constructing Wall Stem for MBR Tanks	[Red bar from Mar to Jul]				
D04980	BS + E&M for Transformer Room to CLP (KD7)	[Blue bar from Mar to Apr]				
D04985	Energisation by CLP	[Green bar from Apr to May]				
D04990	Other Ground Slab Construction	[Red bar from May to Jun]				
E04910	Other Superstructure Construction	[Red bar from Jun to Jul]				
E04940	BS for Office Accommodations (KD9) (Degree 2)	[Red bar from Jun to Jul]				
<b>T&amp;C and Statutory Inspection</b>						
F04950	Submission & Issue of WW046 IV, V (Inside Services & FS)	[Red bar from Jun to Jul]				
F04960	WSD Inspection	[Green bar from Jun to Jul]				
G04910	Discharge Licence Application	[Green bar from Jul to Aug]				
<b>Portion A1 Buildings</b>						
<b>012 - DOH Disinsection Area and Store Room 1, at Portion A1</b>						
A01250	Finishing	[Blue bar from Mar to Apr]				
A01260	BS for Office Accommodation (Stage 8) (Degree 2)	[Blue bar from Mar to Apr]				
A01270	BS + E&M for Office Accommodation (Stage 9) (Degree 3)	[Green bar from Apr to Jun]				
A01280	Other BS + E&M Installation	[Green bar from Apr to Jun]				
A01285	DG Application	[Green bar from Apr to Jun] ◆ DG Application				
<b>Test &amp; Commission</b>						
C01210	Submission & Issue of WW046 I, II, III (Inside Services & FS)	[Green bar from Apr to May]				
C01220	Submission & Issue of WW046 IV, V (Inside Services & FS)	[Green bar from May to Jun]				
C01230	WSD Inspection	[Green bar from Jun to Jul]				
C01240	FSD Inspection	[Green bar from Jul to Aug]				
C01250	OP Application & TPIDC Inspection	[Green bar from May to Jun]				
<b>036 - Weigh Station</b>						
A03650	Ceiling/Wall Plaster & Painting	[Blue bar from Mar to Apr]				
A03665	External Wall Plaster & Tile	[Blue bar from Mar to Apr]				
A03670	BS for Office Accommodation (Stage 8)	[Blue bar from Mar to Apr]				
A03680	BS + E&M for Office Accommodation (Stage 9)	[Green bar from Apr to Jun]				

■ Actual Work  
■ Remaining Work  
■ Critical  
◆ Milestone

**THREE MONTH ROLLING PROGRAMME**  
**VEHICLE CLEARANCE PLAZAS AND ANCILLARY BUILDINGS AND FACILITIES**  
 Page 2 of 21

Date	Revision	Checked	Approved
01-Feb-17	3MRP updated as of 31 Jan. 2017	ZJ	
28-Feb-17	3MRP updated as of 28 Feb. 2017	ZJ	
31-Mar-17	3MRP updated as of 31 Mar. 2017	ZJ	

Activity ID	Activity Name	2017				
		Mar	Apr	May	Jun	Jul
A03690	Other BS + E&M Installation	[Green bar from Mar to May]				
B03610	T&C for BS & Pumps	[Green bar from Jun to Jul]				
<b>Test &amp; Commission</b>						
B03630	Submission & Issue of WW046 IV, V (Inside Services & FS)	[Green bar from May to Jun]				
B03640	Form 314 & 501 submission	◆ Form 314 & 501 submission				
B03650	WSD Inspection	[Green bar from Jun to Jul]				
B03660	FSD Inspection	[Green bar from Jul to Aug]				
B03670	BEEO Stage II & Accessor Certification Submission	[Green bar from May to Jul]				
B03680	OP Application & TPIDC Inspection	[Green bar from Jun to Jul]				
<b>037 C&amp;ED Tower Cum Inbound Cargo Examination Building (Portion A1 &amp; B)</b>						
A03740	Steel Frame Structure Installation	[Blue bar from Mar to Apr]				
A03742C	Mock-up Sample for Mesh Screen Wall (SS41) & Balustrade	[Blue bar from Mar to Apr]				
A03744	Curtain Wall/Metal Roof/Aluminium Cladding Installation	[Blue bar from Mar to Apr]				
A03748	Wall/Ceiling Plastering/Tiling	[Blue bar from Mar to Apr]				
A03752	Floor Screed/Tiling	[Blue bar from Mar to Apr]				
A03756	Window/Door Frame Installation	[Blue bar from Mar to Apr]				
A03758	Paint Finish	[Blue bar from Mar to Apr]				
A03760	BS + E&M for AVCSS Cabling (KD18A)	[Blue bar from Mar to Apr]				
A03770	BS + E&M for AVCSS Cabling (KD18B)	[Blue bar from Mar to Apr]				
A03780	BS for Office Accomodation (KD9)	[Blue bar from Mar to Apr]				
A03785	BS for Office Accomodation (KD10)	[Blue bar from Mar to Apr]				
A03790	Other BS + E&M Installation	[Blue bar from Mar to Apr]				
<b>Test &amp; Commission</b>						
B03730	Submission & Issue of WW046 IV, V (Inside Services & FS)	[Green bar from Jun to Jul]				
B03740	Form LE5 Submission to EMSD	Form LE5 Submission to EMSD				
B03760	Lift Inspection by EMSD	[Blue bar from Mar to Apr]				
B03770	WSD Inspection	[Green bar from May to Jun]				
B03790	Beam Plus Monthly Submission & Issue	[Green bar from Jun to Jul]				
<b>041 Fire Station Cum Ambulance Depot</b>						
A04126	Cladding & Curtain Wall Installation (incl. steel & metal works)	[Blue bar from Mar to Apr]				
A04132	Blockworks	[Blue bar from Mar to Apr]				
A04133	Wall Plastering/Wall Tiling	[Blue bar from Mar to Apr]				
A04134	Floor Screeding/Tiling/Vinyl Tiles	[Blue bar from Mar to Apr]				
A04135	Ceiling/Wall Painting	[Blue bar from Mar to Apr]				
A04137	False Ceiling Installation	[Blue bar from Mar to Apr]				
A04140	BS for Office Accomodation (Stage 8)	[Blue bar from Mar to Apr]				
A04150	BS + E&M for Office Accomodation (Stage 9)	[Blue bar from Mar to Apr]				
A04160	Other BS + E&M Installation	[Blue bar from Mar to Apr]				
A04170	External Finishing	[Blue bar from Mar to Apr]				
A04180	C/S Plastering/Tiling	[Blue bar from Mar to Apr]				
<b>Test &amp; Commission</b>						
B04110	T&C for BS & Pumps	[Green bar from Jun to Jul]				
B04120	Submission & Issue of WW046 I, II, III (Inside services & FS)	[Green bar from Apr to May]				
B04150	Form LE5 Submission to EMSD	◆ Form LE5 Submission to EMSD				
C04130	Beam Plus Monthly Submission & Issue	[Green bar from Jun to Jul]				
<b>042 Drill Tower</b>						
A04260	Finishing	[Blue bar from Mar to Apr]				
A04270	BS for Office Accomodation (Stage 8)	[Blue bar from Mar to Apr]				
A04280	BS + E&M for Office Accomodation (Stage 9)	[Blue bar from Mar to Apr]				
A04290	Other BS + E&M Installation	[Blue bar from Mar to Apr]				

- █ Actual Work
- █ Remaining Work
- █ Critical
- ◆ Milestone

**THREE MONTH ROLLING PROGRAMME**  
**VEHICLE CLEARANCE PLAZAS AND ANCILLARY BUILDINGS AND FACILITIES**

Date	Revision	Checked	Approved
01-Feb-17	3MRP updated as of 31 Jan. 2017	ZJ	
28-Feb-17	3MRP updated as of 28 Feb. 2017	ZJ	
31-Mar-17	3MRP updated as of 31 Mar. 2017	ZJ	

Activity ID	Activity Name	2017				
		Mar	Apr	May	Jun	Jul
<b>Test &amp; Commission</b>						
B04220	T&C for BS Pumps					
<b>043 DOH Office + Store Room</b>						
A04370	Cladding & Curtain Wall Installation (incl. steel & metal works)					
A04380	BS for Office Accommodation (Stage 8)					
A04390	BS + E&M for Office Accommodation (Stage 9)					
B04310	Other BS + E&M Installation					
B04320	Mock Up For Green Wall (SS39)					
B04330	Stainless Steel Mesh Installation					
B04340	Metal Windows/Louvres/Doors/Railing etc. installation					
B04350	Blockworks					
B04360	Wall Plastering/Tiling					
B04370	Floor Screeding/Tiling					
B04380	False Ceiling Installation & Painting					
B04390	Carpentry (Wooden Doors/Partition/Lockers/Etc.)					
C04310	C/S Wall Plastering					
C04320	Paint Finishing to Walls					
<b>Test &amp; Commission</b>						
C04340	Submission & Issue of WW046 I, II, III (Inside Services & FS)					
C04350	Submission & Issue of WW046 IV, V (Inside Services & FS)					
C04360	Form 2 Submission					
C04380	DG application					
<b>052 - Transforms (Zone 4)</b>						
A05235	Energisation by CLP					
A05250	Ceiling/Wall Painting Finish & Floor Scream					
A05260	External Wall Plaster & Wall (KD10)					
A05270	Main Switch/L.V. Switch Board Installation					
<b>T&amp;C and Statutory Inspection</b>						
B05210	T&C for BS & Pumps					
B05270	Non-Essential T&C (Non-FSI)					
B05280	OP Application & TPIDC Inspection					
<b>Completion of Fire Services Installation and Equipment (FCD)</b>						
C05210	Approved Building Plans					
<b>105 IMM D Guard Booth, Portion A1 (Mock Up)</b>						
B10510	Excavation + Blinding					
B10520	Substructure (Raft Foundation)					
B10530	On Grade Ground Slab					
B10540	Finishing					
B10550	BS for Office Accommodations (KD9)					
B10560	BS + E&M for Office Accommodation (KD10)					
B10570	Other BS + E & M Installation					
<b>Facade Envelop Structure Installation</b>						
B10580	Shop Drawing Submission and Approval					
B10590	Fabrication of F/C System					
C10510	Casted-in Items Installation					
<b>210 - ImmD GV Secondary Examination Bays Inbound</b>						
ER5830	Construction of the Area and Access to the Interface Contractor					
<b>External Works for Portion A1</b>						
<b>Drainage Works</b>						
ED5590	Drainage Works (774m & 35MHs), Stage 2 (Middle)					

- █ Actual Work
- █ Remaining Work
- █ Critical
- ◆ Milestone

**THREE MONTH ROLLING PROGRAMME  
VEHICLE CLEARANCE PLAZAS AND ANCILLARY BUILDINGS AND FACILITIES**

Date	Revision	Checked	Approved
01-Feb-17	3MRP updated as of 31 Jan. 2017	ZJ	
28-Feb-17	3MRP updated as of 28 Feb. 2017	ZJ	
31-Mar-17	3MRP updated as of 31 Mar. 2017	ZJ	

Activity ID	Activity Name	2017				
		Mar	Apr	May	Jun	Jul
ED5600	Sewerage (300m & 9MHs), Stage 2 (Middle)					
ED5610	Drainage Works (773m & 34MHs), Stage 3 (Eastern)					
ED5620	Sewerage (269m & 7MHs), Stage 3 (Eastern)					
<b>Waterpipe Laying</b>						
EW5010	Fresh Water Main Laying (700 m), Stage 1 (Western)					
EW6010	Flushing Water Main Laying (322 m), Stage 1 (Western)					
EW6020	Fresh Water Main Laying (700 m), Stage 2 (Middle)					
EW6030	Flushing Water Main Laying (322 m), Stage 2 (Middle)					
EW6040	Fresh Water Main Laying (260 m), Stage 3 (Eastern)					
EW6050	Flushing Water Main Laying (323m), Stage 3 (Eastern)					
<b>Duct Laying for Utilities/Telecom Cabling, TCSS &amp; Lighting</b>						
EU5260	Duct & Cable Laying for Utilities/Telecom, CLP, BS & ELV					
EU5270	Duct & Cable Laying for TCSS & Lighting					
<b>Roadworks</b>						
ER1520	Subbase (8500 ton), Stage 1 (Western)					
<b>PORTION A2</b>						
<b>Portion A2 Structures</b>						
<b>046 - Refuse Collection Point, Portion A2</b>						
A04610	Raft Foundation					
A04620	Superstructure w/2 water tank					
<b>Test &amp; Commission</b>						
B04620	Submission & Issue of WW046 I, II, III (Inside Services & FS)					
<b>048 - Reclaimed Water Pumping Station, Portion A2</b>						
A04867	Backfilling + Removal of ELS					
A04890	Backfilling					
B04810	Superstructure Construction					
B04820	BS for Office Accommodations (Stage 8) (KD9)					
B04830	BS + E&M for Office Accommodation (Stage 9) (KD10)					
B04840	Other BS + E&M Installation					
<b>Test &amp; Commission</b>						
B04860	DG Application					
B04880	Submission & Issue of WW046 I, II, III (Inside Services & FS)					
<b>Retaining Wall W9-2</b>						
SW9210	Construction of Retaining Wall W9-2 (U-shape, 6 bay)					
<b>External Works for Portion A2</b>						
<b>Drainage Works</b>						
ED5630	Drainage Works (228m & 15MHs)					
ED5640	Sewerage (322m & 9MHs)					
<b>Waterpipe Laying</b>						
EW6060	Fresh Water Main Laying (336m)					
EW6070	Flushing Water Main Laying (91m)					
<b>PORTION B</b>						
<b>Portion B Structures</b>						
<b>Retaining Wall W7-2</b>						
S70890	Retaining Wall W7-2 Backfilling					
S70910	C3-S6 Slopeworks					
S70970	Retaining Wall W7-2 Parapet (2 pour) & E&M Works					
<b>Retaining Wall W6-1</b>						
S62060	Retaining Wall W6-1 Backfilling					

- Actual Work
- Remaining Work
- Critical
- Milestone

**THREE MONTH ROLLING PROGRAMME  
VEHICLE CLEARANCE PLAZAS AND ANCILLARY BUILDINGS AND FACILITIES**

Date	Revision	Checked	Approved
01-Feb-17	3MRP updated as of 31 Jan. 2017	ZJ	
28-Feb-17	3MRP updated as of 28 Feb. 2017	ZJ	
31-Mar-17	3MRP updated as of 31 Mar. 2017	ZJ	

Activity ID	Activity Name	2017				
		Mar	Apr	May	Jun	Jul
S62070	Retaining Wall W6-1 Parapet (8 pour) & E&M Works					
S62080	Retaining Wall W6-1 Drainage System & Cable Laying					
<b>Bay 25 - 29 of CUE/Staff Subway</b>						
C02930	Bay 25 - 29 Construction - Wall + Top Slab					
C02960	Internal Finishes & Cable Containment (KD1)					
C02970	BS + E&M Installation for AVCSS (KD1)					
C02980	Allow Access to C1 for Chilled Water Pipe (CUE) installation					
<b>Portion B Buildings</b>						
<b>027/028 Inbound Kiosks &amp; 029 Outbound Kiosks</b>						
A02720	Superstructure					
A02730	Construction of Subway Entrance					
A02740	Construction of Subway Toilets					
A02750	Finishing					
A02760	BS for Office Accomodation (Stage 8)					
A02780	BS + E&M for AVCSS Works (KD18A)					
A02790	BS + E&M for AVCSS Cabling (KD18B)					
<b>027/028 Inbound Kiosks &amp; 029 Outbound Kiosks, Section IX, Subject to Excision</b>						
B02740	Pre-fabrication for the Steel Kiosks					
B02760	BS + E&M for AVCSS Works (KD18C)					
B02770	BS + E&M for AVCSS Works (KD18D)					
<b>026 Inbound IMM and DOH Secondary Screening Building</b>						
A02640	Finishing					
A02650	Contractor's Design Submission for SS Mesh Screen & Approval					
A02660	Contractor's Design Submission for Aluminium Cladding & Approval					
A02670	BS for Office Accomodation (Stage 8)					
A02680	BS + E&M for Office Accomodation (Stage 9)					
A02690	Other BS + E&M Installation					
<b>Test &amp; Commission</b>						
B02630	Submission & Issue of WW046 IV, V (Inside Services & FS)					
B02650	TC for BS & Pumps					
B02680	Form LE5 Submission to EMSD					
B02690	Lift Inspection by EMSD					
<b>054 Inbound Fixed X-ray Building</b>						
A05460	Finishing					
A05467	Energisation by CLP					
A05470	BS for Office Accomodation (Stage 8)					
A05480	BS + E&M for Office Accomodation (Stage 9)					
A05490	Other BS + E&M Installation					
B05410	Lift Installation					
<b>T&amp;C and Statutory Inspection for Zone 4a</b>						
B05420	T&C for BS & Pumps					
B05430	Form LE Submission to EMSD					
B05440	Lift Inspection by EMSD					
<b>Waterworks Ordinance (WSD)</b>						
G05410	Approval Letter and approved Drawings					
<b>038 AFCD Office</b>						
A03850	Finishing + Curtain Wall Installation					
A03870	BS for Office Accomodation (Stage 8)					
A03880	BS + E&M for Office Accomodation (Stage 9)					
A03890	Other BS + E&M Installation					

- █ Actual Work
- █ Remaining Work
- █ Critical
- ◆ Milestone

Date	Revision	Checked	Approved
01-Feb-17	3MRP updated as of 31 Jan. 2017	ZJ	
28-Feb-17	3MRP updated as of 28 Feb. 2017	ZJ	
31-Mar-17	3MRP updated as of 31 Mar. 2017	ZJ	

Activity ID	Activity Name	2017				
		Mar	Apr	May	Jun	Jul
<b>Test &amp; Commission</b>						
B03810	T&C for BS & Pumps					
B03830	Submission & Issue of WW046 I, II, III (Inside Services & FS)					
C03820	Form 2 Submission		◆			
<b>039 Police Main Building</b>						
A03940	Finishing + Curtain Wall Installation					
A03950	BS for Office Accomodation (Stage 8), & for TCSS works (KD14)					
A03960	BS + E&M for Office Accomodation (Stage 9)					
A03970	Other BS + E&M Installation					
<b>Test &amp; Commission</b>						
B03920	Submission & Issue of WW046 I, II, III (Inside Services & FS)					
B03930	Submission & Issue of WW046 IV, V (Inside Services & FS)					
B03950	Beam Plus Monthly Submission & Issue					
C03950	Form 2 Submission		◆			
C03970	T&C for BS & Pumps					
<b>040 Incident Control Tower</b>						
A04040	Superstructure					
A04050	Finishing (KD9)					
A04060	BS for Office Accomodation (Stage 8), & for TCSS works (KD14)					
A04070	BS + E&M for Office Accomodation (Stage 9)					
<b>Facade Cladding System</b>						
B04020	Fabrication of F/C System					
B04030	Casted-in Items Installation					
B04040	Steel Frame Installation					
<b>Glass Wall</b>						
C04020	Fabrication of Glass Wall					
C04030	Casted-in Items Installation					
C04040	Steel Frame Installation					
<b>Test &amp; Commission</b>						
D04030	T&C for BS & Pumps					
D04040	Form 2 Submission					◆
<b>102 HKPF UVSS Monitor Room</b>						
A10230	Finishing (False Ceiling) (KD9)					
A10240	BS for Office Accomodation (Stage 8)					
A10270	Other BS + E&M Installation					
C10210	WVO 46 Part I, II, III Submission (inside Service + FS)					◆
<b>Metal Canopy and Roof Installation</b>						
B10212	Fabrication of MC/R					
B10220	Casted-in Items Installation					
B10230	Steel Frame Installation					
B10240	Glass panel, metal cladding panel installation					
<b>103 Police Inspection Post</b>						
A10350	Finishing (False Ceiling) (KD9)					
A10360	BS for Office Accomodation (Stage 8)					
A10380	Other BS + E&M Installation					
C10320	WVO 46 Part I, II, III Submission (inside Service + FS)					◆
<b>HPL Composite Panel Cladding System</b>						
B10310	Shop Drawing Submission and Approval					
B10320	Fabrication of HPL Cladding					
B10330	Casted-in Items Installation					

- Actual Work
- Remaining Work
- Critical
- ◆ Milestone

**THREE MONTH ROLLING PROGRAMME  
VEHICLE CLEARANCE PLAZAS AND ANCILLARY BUILDINGS AND FACILITIES**

Date	Revision	Checked	Approved
01-Feb-17	3MRP updated as of 31 Jan. 2017	ZJ	
28-Feb-17	3MRP updated as of 28 Feb. 2017	ZJ	
31-Mar-17	3MRP updated as of 31 Mar. 2017	ZJ	



Activity ID	Activity Name	2017				
		Mar	Apr	May	Jun	Jul
B10340	Steel Frame Installation					
<b>057 Transformers (Zone 2)</b>						
A05740	Finishing					
A05755	Energisation by CLP					
A05760	BS for Office Accomodation (Stage 8)					
A05770	BS + E&M for Office Accomodation (Stage 9)					
A05780	Other BS + E&M Installation					
<b>T&amp;C and Statutory Inspection for Zone 2a &amp; 2b</b>						
C05700	T&C for BS & Pumps					
F05700	Essential T&C (FSI)					
F05710	Non-Essential T&C (Non-FSI)					
<b>Completion of Fire Services Installation and Equipment (FCD)</b>						
F05740	Provision of Approved Building Plans by the Engineer					
F05750	Application for FSI Inspection (FSI/501) c/w FSI Plan (FSI/314)					
<b>DG License &amp; EPD Generator Approval</b>						
G05710	Approval Letter and approved Drawings					
<b>107 - C&amp;ED Mobile X-ray Operation Office (Cargo), Portion B</b>						
C10730	Superstructure (Roof Slabs)					
C10740	Finishing					
C10750	BS for Office Accomodation (Stage 8)					
C10760	BS + E&M for Office Accomodation (Stage 9)					
C10770	Other BS + E&M Installation					
<b>113 - Field Kiosk for Access Control, Portion B</b>						
B11320	Raft Foundation					
B11330	Superstructure (Roof Beams & Slabs)					
B11340	Finishing					
B11350	BS for Office Accomodation (Stage 8)					
B11370	Other BS + E&M Installation					
<b>201 - Inbound Cargo Mobile X-ray Operation Area</b>						
ER5740	Radiation Screen Wall Construction					
ER5850	Construction of the Area and Access to the Interface Contractor					
<b>205 - Inbound Private Car Mobile X-ray Operation Area</b>						
ER5750	Radiation Screen Wall Construction					
ER5860	Construction of the Area and Access to the Interface Contractor					
<b>External Works for Portion B</b>						
<b>Drainage Works</b>						
ED5670	Drainage Works (1130m & 60MHs), Stage 3 (N/W)					
ED5680	Sewerage (300m & 8MHs), Stage 3 (N/W)					
ED5690	Drainage Works (1130m & 60MHs), Stage 4 (N/E)					
ED5700	Sewerage (300m & 82MHs), Stage 4 (N/E)					
<b>Waterpipe Laying</b>						
EW6080	Fresh Water Main Laying (500m), Stage 2 (S/E)					
EW6090	Flushing Water Main Laying (460m), Stage 2 (S/E)					
EW6100	Fresh Water Main Laying (500m), Stage 3 (N/W)					
EW6110	Flushing Water Main Laying (460m), Stage 3 (N/W)					
EW6190	Chilled Water Pipe Laying in Portion B (external)					
<b>Duct Laying for Utilities/Telecom Cabling, TCSS &amp; Lighting</b>						
EU5300	Duct & Cable Laying for Utilities/Telecom, CLP, BS & ELV					
EU5310	Duct & Cable Laying for TCSS & Lighting					
EU5550	ELV Installation					

■ Actual Work  
■ Remaining Work  
■ Critical  
◆ Milestone

**THREE MONTH ROLLING PROGRAMME**  
**VEHICLE CLEARANCE PLAZAS AND ANCILLARY BUILDINGS AND FACILITIES**  
 Page 8 of 21

Date	Revision	Checked	Approved
01-Feb-17	3MRP updated as of 31 Jan. 2017	ZJ	
28-Feb-17	3MRP updated as of 28 Feb. 2017	ZJ	
31-Mar-17	3MRP updated as of 31 Mar. 2017	ZJ	

Activity ID	Activity Name	2017				
		Mar	Apr	May	Jun	Jul
<b>Roadworks</b>						
ER1640	Subbase (10000 ton), Stage 1 (N/W)					
ER3590	Bitumen Pavement (14000 ton), Stage 1 (N/W)					
ER3600	Rigid Pavement (594 m3), Footpath & EVA, Stage 1 (N/W)					
ER5590	Subbase (11000 ton), Stage 2 (N/E)					
ER5600	Bitumen Pavement (15000 ton), Stage 2 (N/E)					
ER5610	Rigid Pavement (594 m3), Footpath & EVA, Stage 2 (N/E)					
<b>Sign Gantry ADS 306A &amp; ADS 306B</b>						
ES5240	Fabrication & Delivery of Sign Gantrys to Site					
<b>PORTION C</b>						
<b>Portion C Buildings</b>						
<b>010 - Inbound Coach Kiosk &amp; Staff Subway Entrance</b>						
A01010	Substructure and Staircase Construction					
<b>009 - Staff Subway Entrance (Bay 0 - 3) &amp; Shuttle Bus Kiosks</b>						
A00940	Finishing					
A00950	BS + E&M for AVCSS works (KD 1)					
A00960	Allow Access to C1 for Chilled Water Pipe Installation (CUE)					
B00920	Kiosk superstructure					
B00930	BS + E&M for AVCSS works (KD18A)					
B00940	BS + E&M for AVCSS Cabling (KD18B)					
<b>012 - DOH Disinsection Area and Store Room 1, at Portion C</b>						
B01210	Excavation & Blinding					
B01220	Raft Foundation					
B01230	Superstructure					
B01240	Finishing					
B01270	BS for Office Accomodation (KD 9)					
<b>104 - DOH Secondary Screening Station, at Portion C</b>						
<b>Facade Cladding System</b>						
A10460	Shop Drawing Submission and Approval					
A10465	Fabrication of F/C System					
<b>108 C&amp;ED Mobile X-ray Machine Operation Office, Portion C</b>						
A10805	Excavation & Blinding					
A10810	Raft Foundation					
A10840	Superstructure (Roof Beams & Slabs)					
<b>HPL Composite Panel Cladding System</b>						
A10800	Shop Drawing Submission and Approval					
A10815	Fabrication of HPL Cladding					
<b>110 IMMD Guard Booth (Type 2) East</b>						
A11020	Excavation & Blinding					
A11030	Substructure					
A11080	Finishing					
A11090	BS for Office Accomodation (Stage 8)					
B11020	Other BS + E&M Installation					
<b>Facade Envelop Structure Installation</b>						
A11040	Shop Drawing Submission and Approval					
A11045	Fabrication of F/C System					
A11050	Casted-in Items Installation					
<b>111 Field Kiosk for Carpark Operator</b>						
A11120	Excavation & Blinding					

- █ Actual Work
- █ Remaining Work
- █ Critical
- ◆ Milestone

**THREE MONTH ROLLING PROGRAMME**  
**VEHICLE CLEARANCE PLAZAS AND ANCILLARY BUILDINGS AND FACILITIES**

Date	Revision	Checked	Approved
01-Feb-17	3MRP updated as of 31 Jan. 2017	ZJ	
28-Feb-17	3MRP updated as of 28 Feb. 2017	ZJ	
31-Mar-17	3MRP updated as of 31 Mar. 2017	ZJ	

Activity ID	Activity Name	2017				
		Mar	Apr	May	Jun	Jul
A11130	Raft Foundation					
A11140	Superstructure (Roof beams & Slabs)					
<b>HPL Composite Panel Cladding System</b>						
B11110	Shop Drawing Submission and Approval					
B11120	Fabrication of HPL Cladding					
B11130	Casted-in Items Installation					
<b>113 - Field Kiosk for Access Control, Portion C</b>						
C11310	Excavation & Blinding					
C11320	Raft Foundation					
C11330	Superstructure (Roof Beams & Slabs)					
<b>204 - Inbound Coach Exam Area &amp; Mobile X-ray Operation</b>						
ER5760	Radiation Screen Wall Construction					
<b>External Works for Portion C</b>						
<b>Works in Location 1.2, 1.8 &amp; 011 - Emergency Generator Building</b>						
BB1440	Works & T&C in Location 1.2					
BB1450	Works & T&C in Location 1.8					
BB1460	ELV System Installations and T&C for Contract HY/2013/01					
BB1470	Provisioning of Civil Engineering Works for 011-Emergency Generator Building (KD18)					
<b>Drainage Works</b>						
B00040	Initial Survey					
SG2400	Drainage Works (400m & 18MHs), Stage 1 (Eastern)					
SG3610	Sewerage (90m & 2MHs), Stage 1 (Eastern)					
<b>Waterpipe Laying</b>						
SW2410	Fresh Water Main Laying (135m), Stage 1 (Eastern)					
SW2420	Flushing Water Main Laying (50m), Stage 1 (Eastern)					
<b>Duct Laying for Utilities/Telecom Cabling, TCSS &amp; Lighting</b>						
SU5320	Duct & Cable Laying for Utilities/Telecom, CLP, BS & ELV					
SU5330	Duct & Cable Laying for TCSS & Lighting					
<b>Roadworks</b>						
SR2500	Subbase (2100 ton), Stage 1 (Eastern)					
<b>PORTION D</b>						
<b>Portion D Building</b>						
<b>113 - Field Kiosk for Access Control, Portion D</b>						
C11360	Raft Foundation					
C11370	Superstructure (Roof Beams & Slabs)					
C11380	Finishing					
D11340	BS for Office Accomodation (Stage 8)					
<b>External Works for Portion D</b>						
<b>Drainage Works</b>						
SG3640	Drainage Works (361m & 14MHs)					
SG3760	Sewerage (121m & 6MHs)					
<b>Waterpipe Laying</b>						
SW3650	Fresh Water Main Laying (108m)					
<b>Duct Laying for Utilities/Telecom Cabling, TCSS &amp; Lighting</b>						
SU5340	Duct & Cable Laying for Utilities/Telecom, CLP, BS & ELV					
SU5350	Duct & Cable Laying for TCSS & Lighting					
SU5640	Access date to Telephone Companies					
<b>Roadworks</b>						
SR3740	Subbase (261 ton)					

- █ Actual Work
- █ Remaining Work
- █ Critical
- ◆ Milestone

**THREE MONTH ROLLING PROGRAMME**  
**VEHICLE CLEARANCE PLAZAS AND ANCILLARY BUILDINGS AND FACILITIES**

Date	Revision	Checked	Approved
01-Feb-17	3MRP updated as of 31 Jan. 2017	ZJ	
28-Feb-17	3MRP updated as of 28 Feb. 2017	ZJ	
31-Mar-17	3MRP updated as of 31 Mar. 2017	ZJ	

Activity ID	Activity Name	2017				
		Mar	Apr	May	Jun	Jul
SR3770	Bitumen Pavement (619 ton)					
<b>PORTION E</b>						
<b>006 - Shuttle Bus Kiosk &amp; Staff Subway Entrance, at Portion E &amp; M</b>						
A00620	Constructing base of Subway					
A00630	Constructing wall stem + top slab of Subway					
A00640	Backfilling					
A00650	Constructing Ground Slab					
A00660	Constructing Kiosk (4 Nr.)					
A00670	Constructing Subway Entrance					
<b>External Works for Portion E</b>						
<b>Drainage Works</b>						
SG3780	Drainage Works (99m & 5MHs)					
SG3900	Sewerage (38m & 1 MH)					
<b>Waterpipe Laying</b>						
SW3790	Fresh Water Main Laying (45m)					
SW3800	Flushing Water Main Laying (25m)					
<b>Duct Laying for Utilities/Telecom Cabling, TCSS &amp; Lighting</b>						
SU5360	Duct & Cable Laying for Utilities/Telecom, CLP, BS & ELV					
SU5370	Duct & Cable Laying for TCSS & Lighting					
<b>Roadworks</b>						
SR3880	Subbase (1659 ton)					
SR3910	Bitumen Pavement (2105 ton)					
SR3920	Rigid Pavement (180 m3)					
<b>PORTION F</b>						
<b>External Works for Portion F</b>						
<b>Drainage Works</b>						
B00070	Initial Survey					
SG3930	Drainage Works (122m & 9MHs)					
SG4050	Sewerage (70m & 3MHs)					
<b>Waterpipe Laying</b>						
SW3940	Fresh Water Main Laying (205m)					
<b>Duct Laying for Utilities/Telecom Cabling, TCSS &amp; Lighting</b>						
SU5380	Duct & Cable Laying for Utilities/Telecom, CLP, BS & ELV					
SU5390	Duct & Cable Laying for TCSS & Lighting					
SU5420	ELV Installation					
<b>Roadworks</b>						
SR4030	Subbase (1534 ton)					
<b>PORTION G, H1 &amp; H2</b>						
<b>Portion G Structures</b>						
<b>Box Culvert C</b>						
<b>Box Culvert Structure</b>						
SC0310	Box C - Branch Construction					
SC0320	Box C - Branch Backfilling					
SC0380	Box C - Construction of Main Body					
SC0390	Box C - Back filling					
<b>Bridge A1</b>						
<b>Structure Deck</b>						
SA1450	Falsework for Deck P101, P102					

- █ Actual Work
- █ Remaining Work
- █ Critical
- ◆ Milestone

Date	Revision	Checked	Approved
01-Feb-17	3MRP updated as of 31 Jan. 2017	ZJ	
28-Feb-17	3MRP updated as of 28 Feb. 2017	ZJ	
31-Mar-17	3MRP updated as of 31 Mar. 2017	ZJ	

Activity ID	Activity Name	2017				
		Mar	Apr	May	Jun	Jul
SA1460	Deck on P101, P102 + Stressing					
SA1510	Deck on P105, A106 + Stressing					
<b>Bridge A2</b>						
<b>Structure Deck</b>						
SA2450	Falsework for Deck P201 - P202					
SA2460	Deck on P201 & P202 + Stressing					
SA2470	Parapet (36 pour), E&M Works & installation of DS49					
<b>Bridge A3</b>						
<b>Structure Deck</b>						
SA3460	Deck on P303, P304a/P304b + Stressing					
SA3470	Falsework for Deck P304a - A305					
SA3480	Deck on P304a, A305 + Stressing					
SA3510	Parapet (56 pour), E&M Works & installation of DS51					
<b>Bridge A4</b>						
<b>Structure Deck</b>						
SA4410	Falsework for Deck P502b, P401					
SA4420	Deck on P502b, P401 + Stressing					
SA4430	Falsework for Deck P401, P402					
SA4440	Deck on P401, P402 + Stressing					
SA4450	Falsework for Deck P304b, P402					
SA4460	Deck on P304b, P401, P402 + Stressing					
<b>Bridge A5</b>						
<b>Pier &amp; Abutment</b>						
SA5370	Abutment A501					
<b>Structure Deck</b>						
SA5440	Deck on P503, P504, + Stressing					
SA5460	Deck on P505, P506 + Stressing					
SA5470	Falsework for Deck P502a, P502b, P503					
SA5480	Deck on P502a, P502b & P503 + Stressing					
SA5510	Falsework for Deck P506 - P507					
SA5520	Deck on P506 & P507 + Stressing					
SA5530	Falsework for Deck A501 - P502a					
SA5540	Deck on A501 & P502a + Stressing					
SA5550	Falsework for Deck P507 - P508a, P508b					
SA5560	Deck on P507 & P508a, P508b + Stressing					
<b>Bridge A6</b>						
<b>Structure Deck</b>						
SA6480	Deck on P604, P605 + Stressing					
SA6510	Deck on P605, P606 + Stressing					
SA6530	Deck on P606 & A607 + Stressing					
SA6540	Parapet (50 pour) & E&M Works					
<b>Bridge A7a, A7b, A7c</b>						
<b>Structure Deck</b>						
SA7770	Deck on P704 & P705 (Bridge A7a) + Stressing					
SA7790	Deck on P703, P704 (Bridge A7a) + Stressing					
SA7810	Falsework for Deck P702, P703					
SA7820	Deck on P702, P703 (Bridge A7 a) + Stressing					
SA7830	Falsework for Deck A701, P702					
SA7840	Deck on A701, P702 (Bridge A7a) + Stressing					
SA7930	Deck on P710 & A711 (Bridge A7c) + Stressing					

- █ Actual Work
- █ Remaining Work
- █ Critical
- ◆ Milestone

**THREE MONTH ROLLING PROGRAMME**  
**VEHICLE CLEARANCE PLAZAS AND ANCILLARY BUILDINGS AND FACILITIES**

Date	Revision	Checked	Approved
01-Feb-17	3MRP updated as of 31 Jan. 2017	ZJ	
28-Feb-17	3MRP updated as of 28 Feb. 2017	ZJ	
31-Mar-17	3MRP updated as of 31 Mar. 2017	ZJ	

Activity ID	Activity Name	2017					
		Mar	Apr	May	Jun	Jul	
SA7940	Parapet for Bridge A7b (8 pour) & E&M Works		[Green bar]				
SA7950	Parapet for Bridge A7c (38 pour) & E&M Works		[Green bar]				
SA7960	Parapet for Bridge A7a (48 pour) & E&M Works				[Green bar]		
SA7980	Bituminous Paving for A7c (400 ton)(KD25)				[Green bar]		
<b>Bridge A8</b>							
<b>Structure Deck</b>							
SA8440	Deck on P802, P803 + Stressing						
SA8450	Falsework for Deck P803, P804						
SA8460	Deck on P803, A804 + Stressing	[Blue bar]	[Green bar]				
SA8470	Parapet (26 Pour) & E&M works				[Green bar]		
<b>Retaining Walls W1-1, W3-1, W5-1 &amp; W7-1</b>							
<b>Retaining Wall W1-1</b>							
SW1110	Construction of Retaining Wall W1-1 (L-shape, 4 bays)	[Blue bar]	[Green bar]				
SW1120	Retaining Wall W1-1 Backfilling				[Green bar]		
<b>Retaining Wall W3-1</b>							
SW3150	Construction of Retaining Wall W3-1 (U-shape, 4 bays)		[Blue bar]	[Red bar]			
SW3160	Backfilling W3-1				[Red bar]		
<b>Retaining Wall W5-1</b>							
SW5010	Construction of Retaining Wall W5-1 (L-shape, 5 bays)			[Blue bar]	[Red bar]		
<b>Retaining Wall W7-1</b>							
SW7110	Construction of Retaining Wall W7-1 (U-shape, 4 bays)				[Red bar]		
<b>Portion G Buildings</b>							
<b>002 - C&amp;ED Observation Guard Booth No. 1, Portion H1</b>							
C00220	Excavation + Blinding			[Green bar]			
C00230	Raft Foundation			[Green bar]			
C00240	Superstructure				[Green bar]		
<b>002 - C&amp;ED Observation Guard Booth No. 2, Portion H1</b>							
E00210	Excavation + Blinding			[Green bar]			
E00220	Raft Foundation			[Green bar]			
E00230	Superstructure				[Green bar]		
<b>033 Inbound Private Car Exam Building</b>							
A03330	Finishing	[Blue bar]	[Green bar]				
A03360	External Works		[Green bar]				
A03370	BS for Office Accomodation (Stage 8)	[Blue bar]	[Green bar]				
A03380	BS + E&M for Office Accomodation (Stage 9)				[Green bar]		
A03390	Other BS + E&M Installation	[Blue bar]	[Green bar]				
C03310	Submission & Issue of WW046 I, II, III (Inside Services & FS)		[Green bar]				
<b>Glass Canopy Installation</b>							
B03305	Fabrication of Glass Canopy	[Blue bar]	[Green bar]				
B03350	Casted-in Items Installation				[Green bar]		
B03360	Steel Frame Installation				[Green bar]		
<b>Aluminium Metal Canopy</b>							
B03315	Fabrication of F/C System	[Blue bar]					
B03320	Casted-in Items Installation	[Blue bar]					
B03330	Steel Frame Installation				[Green bar]		
B03340	Aluminium Cladding Installation				[Green bar]		
<b>034 Satellite RCP South</b>							
A03450	Finishing	[Blue bar]	[Green bar]				
A03460	BS for Office Accomodation (Stage 8)	[Blue bar]	[Green bar]				
A03470	BS + E&M for Office Accomodation (Stage 9)			[Green bar]			

█ Actual Work  
█ Remaining Work  
█ Critical  
◆ Milestone

**THREE MONTH ROLLING PROGRAMME**  
**VEHICLE CLEARANCE PLAZAS AND ANCILLARY BUILDINGS AND FACILITIES**  
 Page 13 of 21

Date	Revision	Checked	Approved
01-Feb-17	3MRP updated as of 31 Jan. 2017	ZJ	
28-Feb-17	3MRP updated as of 28 Feb. 2017	ZJ	
31-Mar-17	3MRP updated as of 31 Mar. 2017	ZJ	

Activity ID	Activity Name	2017				
		Mar	Apr	May	Jun	Jul
A03480	Other BS + E&M Installation	[Green bar from Mar to Jun]				
<b>Test &amp; Commission</b>						
C03420	Submission & Issue of WW046 IV, V (Inside Services & FS)	[Green bar in May]				
C03430	Form 314 & 501 submission	◆ Form 314				
C03440	T&C for BS & Pumps	[Green bar in Jul]				
C03450	WSD Inspection	[Green bar in May]				
<b>S S Facade Greenery System</b>						
B03415	Fabrication of SS F/G System	[Green bar from Mar to May]				
B03420	Casted-in Items Installation	[Green bar from Mar to May]				
B03430	Steel Frame Installation	[Green bar from May to Jul]				
<b>035 - Sewage Pumping Station, Portion G</b>						
A03580	Constructing of Wall Stem of Wet Well	[Green bar in Mar]				
A03590	Water-tightness Test for Wet Wells	[Green bar in May]				
B03530	Constructing Base Slab of Basement	[Green bar from Mar to May]				
B03540	Constructing Basement Wall & G/F Slab	[Green bar from Mar to May]				
B03550	Water-tightness Test for Inlet Chamber	[Green bar in Jun]				
B03560	Superstructure works	[Green bar from May to Jun]				
B03570	Backfilling	[Green bar in Jun]				
B03580	BS for Office Accommodations (KD9)	[Green bar in Jun]				
C03510	Other BS + E & M Installation	[Green bar in Jun]				
<b>Test &amp; Commission</b>						
C03530	Submission & Issue of WW046 I, II, III (Inside Services & FS)	[Green bar in Jun]				
C03550	Form 314 & 501 submission	◆ Form 314 & 501				
<b>051 Transformers (Zone 5)</b>						
A05150	Finishing	[Green bar in Mar]				
A05165	Energisation by CLP	[Green bar from Mar to May]				
A05170	BS for Office Accommodations (KD9)	[Green bar in Apr]				
A05180	BS + E&M for Office Accommodation (KD10)	[Green bar from Apr to Jul]				
A05190	Other BS + E & M Installation	[Green bar from Apr to Jun]				
<b>T&amp;C and Statutory Inspection for Zone 5</b>						
C05120	T&C for BS & Pumps	[Green bar in Jun]				
C05130	Essential T&C (FSI)	[Green bar in Jun]				
<b>100 Inbound Traffic Control Kiosk</b>						
A10050	Finishing	[Green bar in Mar]				
A10070	BS + E&M for AVCSS Works (KD18A)	[Green bar from Mar to May]				
B10060	BS + E&M for AVCSS Cabling (KD18B)	[Green bar from May to Jul]				
B10070	BS for Office Accommodations (KD9)	[Green bar from May to Jul]				
B10090	Other BS + E & M Installation	[Green bar from Mar to Jul]				
C10010	Submission & Issue of WW046 I, II, III (Inside Services & FS)	[Green bar in Apr]				
<b>HPL Composite Panel Cladding System</b>						
B10015	Fabrication of F/C System	[Green bar from May to Jun]				
B10020	Casted-in Items Installation	[Green bar in Jun]				
<b>112 Field Kiosk for Taxi Queuing Area</b>						
A11240	Finishing	[Green bar from Mar to May]				
A11250	BS + E & M Installation	[Green bar from Mar to Jul]				
A11260	T&C for BS & Pumps SWT	[Green bar in May]				
<b>External Works for Portion G, H1 &amp; H2</b>						
<b>ELV Works within Portion H2 in the Hong Kong Side PTI</b>						
EU1550	ELV Works within Portion H2 in the Hong Kong Side PTI (KD19)	[Red bar from Mar to Jul]				
<b>Works within Portion H1 &amp; H2 except the ELV Works in the Hong Kong Side PTI</b>						

<ul style="list-style-type: none"> <li><span style="display: inline-block; width: 15px; height: 10px; background-color: blue; border: 1px solid black;"></span> Actual Work</li> <li><span style="display: inline-block; width: 15px; height: 10px; background-color: lightgreen; border: 1px solid black;"></span> Remaining Work</li> <li><span style="display: inline-block; width: 15px; height: 10px; background-color: red; border: 1px solid black;"></span> Critical</li> <li>◆ Milestone</li> </ul>	<p><b>THREE MONTH ROLLING PROGRAMME</b></p> <p><b>VEHICLE CLEARANCE PLAZAS AND ANCILLARY BUILDINGS AND FACILITIES</b></p> <p>Page 14 of 21</p>	<table border="1"> <thead> <tr> <th>Date</th> <th>Revision</th> <th>Checked</th> <th>Approved</th> </tr> </thead> <tbody> <tr> <td>01-Feb-17</td> <td>3MRP updated as of 31 Jan. 2017</td> <td>ZJ</td> <td></td> </tr> <tr> <td>28-Feb-17</td> <td>3MRP updated as of 28 Feb. 2017</td> <td>ZJ</td> <td></td> </tr> <tr> <td>31-Mar-17</td> <td>3MRP updated as of 31 Mar. 2017</td> <td>ZJ</td> <td></td> </tr> </tbody> </table>	Date	Revision	Checked	Approved	01-Feb-17	3MRP updated as of 31 Jan. 2017	ZJ		28-Feb-17	3MRP updated as of 28 Feb. 2017	ZJ		31-Mar-17	3MRP updated as of 31 Mar. 2017	ZJ	
Date	Revision	Checked	Approved															
01-Feb-17	3MRP updated as of 31 Jan. 2017	ZJ																
28-Feb-17	3MRP updated as of 28 Feb. 2017	ZJ																
31-Mar-17	3MRP updated as of 31 Mar. 2017	ZJ																

Activity ID	Activity Name	2017				
		Mar	Apr	May	Jun	Jul
EU1560	Drainage & Sewerage Works within Portion H1 & H2 in the Hong Kong Side PTI (KD20)	[Red bar]				
EU5520	Roadworks (+ Footpath) & Canopy Erection within Portion H1 & H2 in the Hong Kong Side PTI (KD20)	[Red bar]				
<b>All Works within the Boundary defined in Drawing No. 60191048/C3/000/C00/1050</b>						
BEU1570	Drainage & Sewerage Works (incl. CLP) within the Boundary defined in Drawing No. 60191048/C3/000/1050	[Red bar]				
<b>Drainage Works</b>						
ED4070	Drainage Works (6954m & 393MHs)	[Green bar]				
ED4190	Sewerage (437m & 12MHs)	[Green bar]				
<b>Waterpipe Laying</b>						
EW4080	Fresh Water Main Laying (1689m)	[Green bar]				
EW4090	Flushing Water Main Laying (411m)	[Green bar]				
<b>Duct Laying for Utilities/Telecom Cabling, TCSS &amp; Lighting</b>						
EU5400	Duct & Cable Laying for Utilities/Telecom, CLP, BS & ELV	[Green bar]				
EU5560	ELV Installation	[Green bar]				
<b>Roadworks</b>						
ER4170	Subbase (17045 ton)	[Green bar]				
ER4200	Bitumen Pavement (24549 ton)	[Green bar]				
ER4210	Rigid Pavement (514 m3), Footpath & EVA	[Green bar]				
<b>Sign Gantry DS40, DS41 &amp; DS75</b>						
ES0080	Testing for Pre-bored H Piling	[Green bar]				
ES0180	Fabrication & Delivery of Sign Gantrys to Site	[Green bar]				
<b>Canopy and Covered Walkway</b>						
CC1310	Shop drawing, Approved & Fabrication	[Green bar]				
CC1320	Footing	[Green bar]				
CC1330	Steel Frame Installation	[Green bar]				
<b>PORTION J</b>						
<b>Portion J Structure</b>						
<b>Bay 30 - 41 of CUE/Staff Subway (Portion J)</b>						
B03230	Bay 34 - 39 Construction - Wall + Top Slab, Staircase	[Blue bar]				
B03250	Bay 40 - 41 Construction - Wall + Top Slab, Staircase	[Blue bar]				
B03260	Internal Finishes & Cable Containment (KD2)	[Red bar]				
B03270	BS + E&M Installation for AVCSS (Stage 2) (KD2)	[Red bar]				
<b>030 Outbound Private Car &amp; GV Kiosks</b>						
A03020	Pre-fabrication for the Steel Kiosks	[Blue bar]				
A03030	Superstructure (Incl. Entrance & Toilet)	[Blue bar]	[Red bar]			
A03090	Other BS + E & M Installation	[Red bar]				
<b>030 Outbound Kiosks, Section IX, Subject to Excision</b>						
C03020	Pre-fabrication for the Steel Kiosks	[Blue bar]				
C03030	Superstructure	[Blue bar]	[Red bar]			
<b>Portion J Buildings</b>						
<b>024 Outbound Private Car Exam Building</b>						
A02410	Raft Foundation	[Blue bar]				
A02420	Superstructure	[Blue bar]				
A02430	Finishing (KD9)	[Green bar]				
A02440	BS for Office Accommodations (KD18F)	[Green bar]				
A02450	BS + E&M for Office Accommodation (KD18G)	[Green bar]				
A02460	Other BS + E & M Installation (KD31)	[Green bar]				
<b>Test &amp; Commission</b>						
D02410	Submission & Issue of WW046 I, II, III (Inside Services & FS)	[Green bar]				

█ Actual Work  
█ Remaining Work  
█ Critical  
◆ Milestone

**THREE MONTH ROLLING PROGRAMME**  
**VEHICLE CLEARANCE PLAZAS AND ANCILLARY BUILDINGS AND FACILITIES**  
 Page 15 of 21

Date	Revision	Checked	Approved
01-Feb-17	3MRP updated as of 31 Jan. 2017	ZJ	
28-Feb-17	3MRP updated as of 28 Feb. 2017	ZJ	
31-Mar-17	3MRP updated as of 31 Mar. 2017	ZJ	



Activity ID	Activity Name	2017				
		Mar	Apr	May	Jun	Jul
<b>Glass Canopy Installation</b>						
B02415	Fabrication of F/C System	Actual Work	Remaining Work			
B02420	Casted-in Items Installation			Remaining Work		
B02430	Steel Frame Installation				Remaining Work	
<b>Aluminium Metal Canopy</b>						
B02455	Fabrication of F/C System	Actual Work	Remaining Work			
B02460	Casted-in Items Installation			Remaining Work		
<b>031 Outbound IMMD and DOH Secondary Screen Building</b>						
A03140	Superstructure	Actual Work	Remaining Work			
A03150	Finishing (KD31)			Remaining Work		
A03160	BS for Office Accommodations (KD18F)			Remaining Work		
A03180	Other BS + E & M Installation (KD31)			Remaining Work		
<b>Test &amp; Commission</b>						
C03120	Submission & Issue of WW046 I, II, III (Inside Services & FS)			Remaining Work		
<b>060 - Single Storey Support Building Associated with Buildings 044 &amp; 045</b>						
A06025	Finishing	Actual Work	Remaining Work			
A06030	BS + E&M for Transform Room to CLP (KD8)	Actual Work				
A06045	Raft Foundation (other than transformer room)	Actual Work				
A06050	Superstructure (other than transformer room) Construction	Actual Work	Remaining Work			
A06055	Energisation by CLP		Actual Work	Remaining Work		
A06060	BS for Office Accommodation (Stage 10) (KD11)			Remaining Work		
A06080	Other BS + E&M Installation				Remaining Work	
<b>T&amp;C and Statutory Inspection for Zone 3a</b>						
B06020	BEE0 Stage II & Accessor Certification Submission				Remaining Work	
B06030	T&C for BS & Pumps				Remaining Work	
<b>Waterworks Ordinance (WSD)</b>						
G06020	Submission of WWO46 - Part I & II (Inside Services)		Remaining Work			
<b>DG License &amp; EPD Generator Approval</b>						
G06000	DG Application		Remaining Work			
<b>061 Telecom Building</b>						
A06150	Finishing (KD9)	Actual Work	Remaining Work			
A06160	BS for Office Accommodations (KD9)	Actual Work	Remaining Work			
A06170	BS + E&M for Office Accommodation (KD10)				Remaining Work	
A06180	Other BS + E & M Installation			Remaining Work		
<b>Aluminium Metal Canopy</b>						
B06115	Fabrication of Aluminium Cladding	Actual Work	Critical			
B06120	Casted-in Items Installation			Critical		
B06130	Steel Frame Installation				Critical	
<b>101 Outbound Traffic Control Kiosk</b>						
A10100	Excavation + Blinding	Actual Work				
A10110	Raft Foundation	Actual Work				
A10130	Superstructure (Roof Beams & Slabs)		Critical			
A10140	Finishing			Remaining Work		
A10150	BS + E&M for AVCSS Works (KD18A)			Critical		
A10160	BS + E&M for AVCSS Cabling (KD18B)			Remaining Work		
A10170	BS for Office Accommodations (KD9)			Remaining Work		
A10190	Other BS + E & M Installation			Remaining Work		
C10110	Submission of WWO46 - Part I & II (Inside Services)			Remaining Work		
<b>HPL Composite Panel Cladding System</b>						
B10110	Shop Drawing Submission and Approval	Actual Work				

■ Actual Work  
■ Remaining Work  
■ Critical  
◆ Milestone

**THREE MONTH ROLLING PROGRAMME**  
**VEHICLE CLEARANCE PLAZAS AND ANCILLARY BUILDINGS AND FACILITIES**  
 Page 16 of 21

Date	Revision	Checked	Approved
01-Feb-17	3MRP updated as of 31 Jan. 2017	ZJ	
28-Feb-17	3MRP updated as of 28 Feb. 2017	ZJ	
31-Mar-17	3MRP updated as of 31 Mar. 2017	ZJ	

Activity ID	Activity Name	2017				
		Mar	Apr	May	Jun	Jul
B10120	Fabrication of HPL Cladding		[Green bar]			
B10130	Casted-in Items Installation				[Green bar]	
<b>206 - Outbound Private Car Mobile X-ray Operation Area</b>						
ER5780	Radiation Screen Wall Construction		[Green bar]			
<b>External Works for Portion J</b>						
<b>Drainage Works</b>						
ED4220	Drainage Works (1700m & 86MHs), Stage 1	[Blue bar]				
ED4340	Sewerage (425m & 11MHs), Stage 1	[Blue bar]				
ED5710	Drainage Works (1697m & 85MHs), Stage 2		[Green bar]			
ED5720	Sewerage (425m & 12MHs), Stage 2		[Green bar]			
<b>Waterpipe Laying</b>						
EW4230	Fresh Water Main Laying (770m), Stage 1 (Northern)		[Red bar]			
EW4240	Flushing Water Main Laying (431m), Stage 1 (Northern)		[Red bar]			
EW6140	Fresh Water Main Laying (771m), Stage 2 (Southern)				[Green bar]	
EW6150	Flushing Water Main Laying (431m), Stage 2 (Southern)				[Green bar]	
<b>Duct Laying for Utilities/Telecom Cabling, TCSS &amp; Lighting</b>						
EU5420	Duct & Cable Laying for Utilities/Telecom, CLP, BS & ELV		[Green bar]			
EU5430	Duct & Cable Laying for TCSS & Lighting		[Green bar]			
<b>Roadworks</b>						
ER4320	Subbase (15400 ton), Stage 1 (Northern)		[Red bar]			
ER4350	Bitumen Pavement (20000 ton), Stage 1 (Northern)			[Red bar]		
ER4360	Rigid Pavement (173 m3), Footpath & EVA, Stage 1 (Northern)			[Red bar]		
<b>Sign Gantry DS104</b>						
ES0140	Sign Gantry DS104 P-bored Piling, 8 Nr.		[Green bar]			
ES5130	Testing for P-bored Piles				[Green bar]	
ES5150	Fabrication & Delivery of Sign Gantrys to Site	[Blue bar]	[Green bar]			
<b>PORTION K, L, M, S &amp; T</b>						
<b>Portion K Building</b>						
<b>002 - C&amp;ED Observation Guard Booth No. 1, Portion K</b>						
A00210	Excavation + Blinding		[Red bar]			
A00220	Raft Foundation		[Red bar]			
A00230	Superstructure				[Red bar]	
<b>002 - C&amp;ED Observation Guard Booth No. 2, Portion K</b>						
B00210	Excavation + Blinding		[Red bar]			
B00220	Raft Foundation		[Red bar]			
B00230	Superstructure				[Red bar]	
<b>Portion M Buildings</b>						
<b>108 - C&amp;ED Mobile X-ray Operation Office, Portion M</b>						
B10800	Excavation + Blinding		[Red bar]			
B10810	Substructure (raft Foundation)		[Red bar]			
B10840	Superstructure (Roof beams & Slabs)			[Red bar]		
B10850	Finishing				[Green bar]	
B10860	BS for Office Accommodations (KD9)				[Green bar]	
<b>HPL Composite Panel Cladding System</b>						
C10820	Fabrication of HPL Cladding		[Green bar]			
C10830	Casted-in Items Installation				[Green bar]	
<b>104 DOH Screening Station, at Portion M</b>						
C10400	Excavation + Blinding		[Green bar]			
C10430	Structure (Raft Foundation)		[Green bar]			

█ Actual Work  
█ Remaining Work  
█ Critical  
◆ Milestone

**THREE MONTH ROLLING PROGRAMME**  
**VEHICLE CLEARANCE PLAZAS AND ANCILLARY BUILDINGS AND FACILITIES**  
 Page 17 of 21

Date	Revision	Checked	Approved
01-Feb-17	3MRP updated as of 31 Jan. 2017	ZJ	
28-Feb-17	3MRP updated as of 28 Feb. 2017	ZJ	
31-Mar-17	3MRP updated as of 31 Mar. 2017	ZJ	

Activity ID	Activity Name	2017				
		Mar	Apr	May	Jun	Jul
C10440	Finishing					
C10450	BS for Office Accommodations (KD9)					
C10470	Other BS + E & M Installation					
<b>Facade Envelop Structure Installation</b>						
D10450	Shop Drawing Submission and Approval					
D10455	Fabrication of F/C System					
D10460	Casted-in Items Installation					
<b>203 - Outbound Coach/Shuttle Bus Exam Area &amp; Mobile X-ray Operation Area</b>						
ER5770	Radiation Screen Wall Construction					
<b>External Works</b>						
<b>Additional Works (Filling &amp; RE Slope), SA1</b>						
ED3230	C1 Contractor to Completed cooling mains at east Portion (Stage 2)					
ED3310	C1 Contractor to Complete Footbridge Supports at the South Portion					
ED3320	Fill Platform from +11.5PD to near PCB (South)					
ED3330	Add surcharge to Platform at +14.5mPD near PCB (South)					
ED3410	C2 Contractor to complete abutment at the North (2 nos.)					
ED3420	Fill Slope around C2 abutments					
<b>Construction of Slopes</b>						
ED3440	Construction of fill slope (Stage 2) (East)					
ED3510	Footing for the Planter Wall, RE slope (North & West)					
ED3520	Construct RE slope (West)					
ED3550	Construction of fill slope (North)					
<b>Drainage Works</b>						
ED4370	Drainage Works (1477m & 81MHs), Stage 1 (Eastern)					
ED4490	Sewerage (78m & 2MHs), Stage 1 (Eastern)					
<b>Waterpipe Laying</b>						
EW4380	Fresh Water Main Laying (608m), Stage 1 (Eastern)					
EW4390	Flushing Water Main Laying (13m), Stage 1 (Eastern)					
<b>Duct Laying for Utilities/Telecom Cabling, TCSS &amp; Lighting</b>						
EU5450	Duct & Cable Laying for TCSS & Lighting					
<b>Roadworks</b>						
ER4470	Subbase (4600 ton), Stage 1 (Eastern)					
ER4500	Bitumen Pavement (4500 ton), Stage 1 (Eastern)					
ER4510	Rigid Pavement (750 m3) & Footpath, Stage 1 (Eastern)					
<b>Canopy and Covered Walkway</b>						
CC1400	Shop drawing, Approved & Fabrication					
CC1410	Footing					
<b>PORTION N</b>						
<b>Portion N Structure</b>						
<b>Box Culvert B</b>						
<b>Bored Pile</b>						
SB0560	Install H-piles					
SB0590	Box B - Foundation: Revised as pre-bored H-Piles					
<b>Box Culvert Structure</b>						
SB0710	Box B - Construction (Stage 1)					
SB0720	Box B - Construction (Stage 2)					
SB0722	Box B - Temporary Works for Construction of Outfall Structure					
SB0730	Box B - Outfall Structure					
<b>Portion N Buildings</b>						

█ Actual Work  
█ Remaining Work  
█ Critical  
◆ Milestone

**THREE MONTH ROLLING PROGRAMME**  
**VEHICLE CLEARANCE PLAZAS AND ANCILLARY BUILDINGS AND FACILITIES**  
 Page 18 of 21

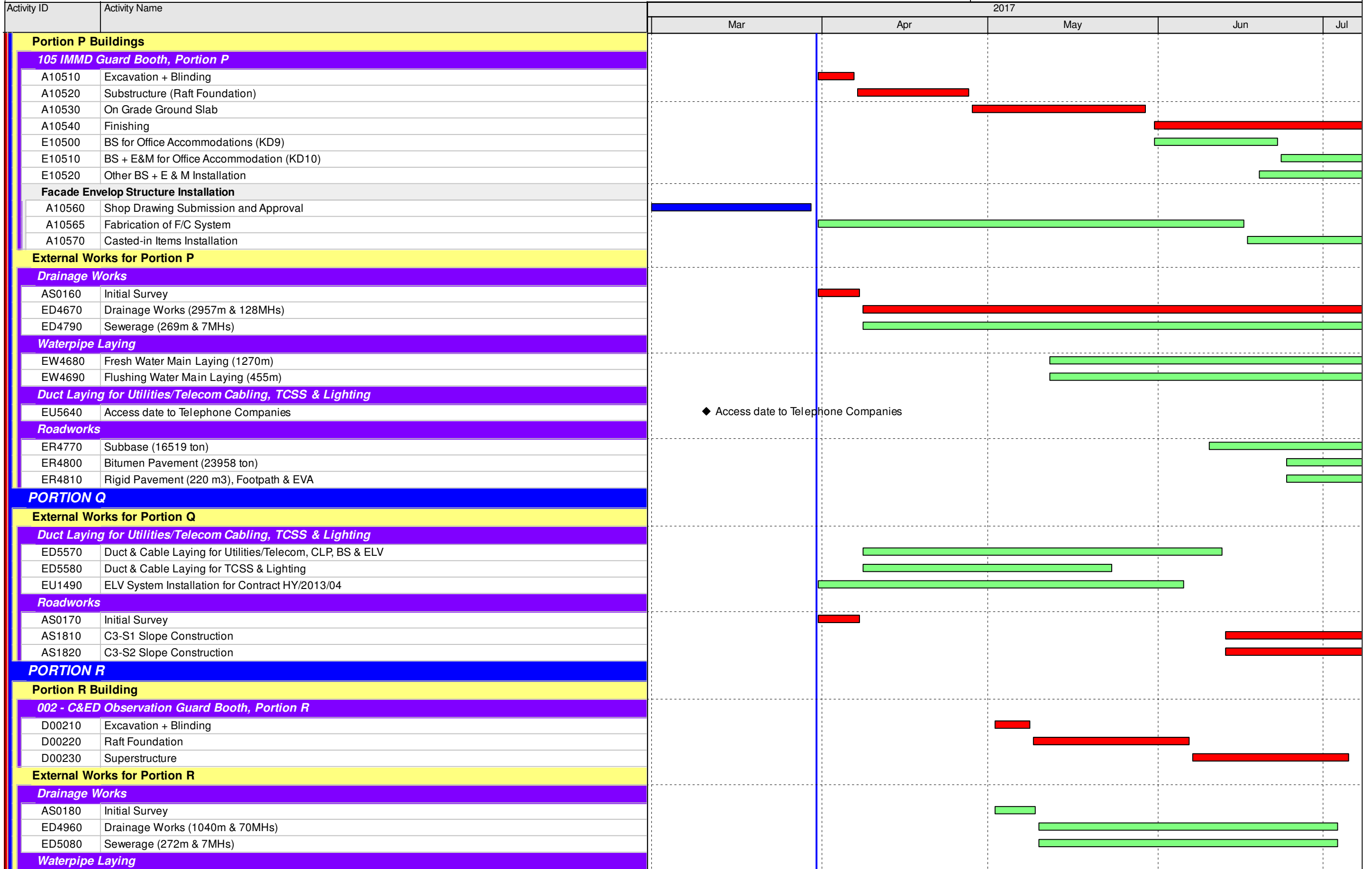
Date	Revision	Checked	Approved
01-Feb-17	3MRP updated as of 31 Jan. 2017	ZJ	
28-Feb-17	3MRP updated as of 28 Feb. 2017	ZJ	
31-Mar-17	3MRP updated as of 31 Mar. 2017	ZJ	

Activity ID	Activity Name	2017				
		Mar	Apr	May	Jun	Jul
<b>104 DOH Screening Station, at Portion N</b>						
C10405	Excavation + Blinding (+ PL Test)	Actual Work	Actual Work			
C10410	Structure (Raft Foundation)		Actual Work	Actual Work		
C10420	Finishing			Actual Work	Actual Work	
E10410	BS for Office Accommodations (KD9)			Actual Work	Actual Work	
E10430	Other BS + E & M Installation				Actual Work	
<b>Facade Envelop Structure Installation</b>						
D10410	Shop Drawing Submission and Approval	Actual Work				
D10415	Fabrication of F/C System		Actual Work	Actual Work	Actual Work	
D10420	Casted-in Items Installation				Actual Work	
<b>106 C&amp;ED Detention Area Guard Booth</b>						
A10600	Excavation + Blinding		Critical			
A10610	Structure (Raft Foundation)		Critical	Critical		
A10640	Finishing			Critical	Critical	
E10640	BS for Office Accommodations (KD9)			Actual Work	Actual Work	
E10660	Other BS + E & M Installation				Critical	
<b>Facade Envelop Structure Installation</b>						
B10610	Shop Drawing Submission and Approval		Critical	Critical		
B10615	Fabrication of F/C System			Critical	Critical	
<b>107 C&amp;ED Mobile X-ray Operation Office, Portion N</b>						
A10700	Excavation + Blinding		Critical			
A10710	Substructure (Raft Foundation)		Critical	Critical		
A10740	Superstructure			Critical	Critical	
A10750	Finishing (KD9)				Critical	
A10760	Other BS + E & M Installation (KD10)				Critical	
<b>HPL Composite Panel Cladding System</b>						
B10710	Shop Drawing Submission and Approval	Actual Work				
B10720	Fabrication of HPL Composite Panel System		Actual Work	Actual Work	Actual Work	
B10730	Casted-in Items Installation				Actual Work	
<b>200 - Inbound/Outbound Vehicle Detection Area</b>						
ER5810	Construction of the Area and Access to the Interface Contractor		Actual Work	Actual Work	Actual Work	
<b>202 - Outbound Cargo Mobile X-ray Operation Area</b>						
ER5790	Radiation Screen Wall Construction		Actual Work	Actual Work	Actual Work	
<b>External Works for Portion N</b>						
<b>Drainage Works</b>						
ED4620	Drainage Works (964m & 56MHs), Stage 1 (Southern)	Actual Work	Critical	Critical	Critical	
ED4650	Sewerage (383m & 12MHs), Stage 1 (Southern)	Actual Work	Critical	Critical	Critical	
ED5750	Drainage Works (963m & 55MHs), Stage 2 (Northern)				Critical	
ED5760	Sewerage (383m & 12MHs), Stage 2 (Northern)				Critical	
<b>Waterpipe Laying</b>						
EW4530	Fresh Water Main Laying (641m)			Critical	Critical	
EW4540	Flushing Water Main Laying (413m)			Critical	Critical	
<b>Duct Laying for Utilities/Telecom Cabling, TCSS &amp; Lighting</b>						
EU5460	Duct & Cable Laying for Utilities/Telecom, CLP, BS & ELV			Critical	Critical	
EU5470	Duct & Cable Laying for TCSS & Lighting		Critical	Critical	Critical	
<b>PORTION P</b>						
<b>Portion Structure</b>						
<b>Retaining Wall RW1</b>						
RW1110	Construction of Retaining Wall RW1 (U-shape, 5 bays)		Actual Work	Actual Work	Actual Work	

- █ Actual Work
- █ Remaining Work
- █ Critical
- ◆ Milestone

**THREE MONTH ROLLING PROGRAMME**  
**VEHICLE CLEARANCE PLAZAS AND ANCILLARY BUILDINGS AND FACILITIES**

Date	Revision	Checked	Approved
01-Feb-17	3MRP updated as of 31 Jan. 2017	ZJ	
28-Feb-17	3MRP updated as of 28 Feb. 2017	ZJ	
31-Mar-17	3MRP updated as of 31 Mar. 2017	ZJ	



- █ Actual Work
- █ Remaining Work
- █ Critical
- ◆ Milestone

Date	Revision	Checked	Approved
01-Feb-17	3MRP updated as of 31 Jan. 2017	ZJ	
28-Feb-17	3MRP updated as of 28 Feb. 2017	ZJ	
31-Mar-17	3MRP updated as of 31 Mar. 2017	ZJ	

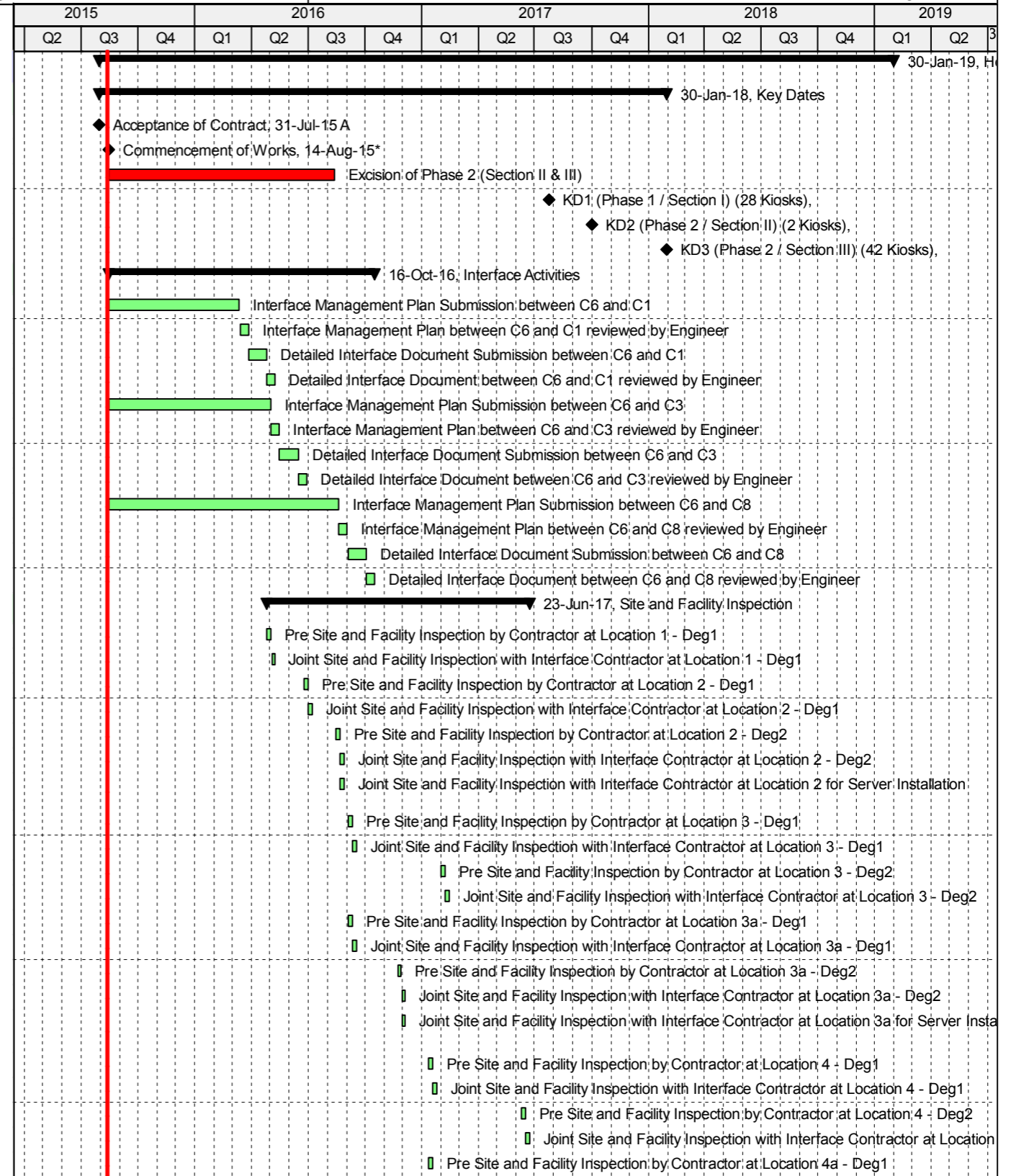
Activity ID	Activity Name	2017				
		Mar	Apr	May	Jun	Jul
EW4970	Fresh Water Main Laying (614m)					
EW4980	Flushing Water Main Laying (222m)					
<b>Duct Laying for Utilities/Telecom Cabling, TCSS &amp; Lighting</b>						
EU5500	Duct & Cable Laying for Utilities/Telecom, CLP, BS & ELV					
EU5510	Duct & Cable Laying for TCSS & Lighting					
EU5610	ELV Installation					
<b>Landscape Works</b>						
A5170	Design and Procurement for Irrigation System					

█ Actual Work  
█ Remaining Work  
█ Critical  
◆ ◆ Milestone

**THREE MONTH ROLLING PROGRAMME**  
**VEHICLE CLEARANCE PLAZAS AND ANCILLARY BUILDINGS AND FACILITIES**  
 Page 21 of 21

Date	Revision	Checked	Approved
01-Feb-17	3MRP updated as of 31 Jan. 2017	ZJ	
28-Feb-17	3MRP updated as of 28 Feb. 2017	ZJ	
31-Mar-17	3MRP updated as of 31 Mar. 2017	ZJ	

Activity ID	Activity Name
<b>Hong Kong-Zhuhai_Macao Bridge Hong Kong Boundary Crossin</b>	
<b>Key Dates</b>	
A1000	Acceptance of Contract
A1010	Commencement of Works
A1020	Excision of Phase 2 (Section II & III)
A1120	KD1 (Phase 1 / Section I) (28 Kiosks)
A1470	KD2 (Phase 2 / Section II) (2 Kiosks)
A1480	KD3 (Phase 2 / Section III) (42 Kiosks)
<b>Interface Activities</b>	
A6860	Interface Management Plan Submission between C6 and C1
A6865	Interface Management Plan between C6 and C1 reviewed by Engineer
A6870	Detailed Interface Document Submission between C6 and C1
A6875	Detailed Interface Document between C6 and C1 reviewed by Engineer
A6880	Interface Management Plan Submission between C6 and C3
A6885	Interface Management Plan between C6 and C3 reviewed by Engineer
A6890	Detailed Interface Document Submission between C6 and C3
A6895	Detailed Interface Document between C6 and C3 reviewed by Engineer
A6900	Interface Management Plan Submission between C6 and C8
A6905	Interface Management Plan between C6 and C8 reviewed by Engineer
A6910	Detailed Interface Document Submission between C6 and C8
A6915	Detailed Interface Document between C6 and C8 reviewed by Engineer
<b>Site and Facility Inspection</b>	
A4730	Pre Site and Facility Inspection by Contractor at Location 1 - Deg1
A4740	Joint Site and Facility Inspection with Interface Contractor at Location 1 - Deg1
A4760	Pre Site and Facility Inspection by Contractor at Location 2 - Deg1
A4770	Joint Site and Facility Inspection with Interface Contractor at Location 2 - Deg1
A4772	Pre Site and Facility Inspection by Contractor at Location 2 - Deg2
A4774	Joint Site and Facility Inspection with Interface Contractor at Location 2 - Deg2
A4775	Joint Site and Facility Inspection with Interface Contractor at Location 2 for Server Installation
A4780	Pre Site and Facility Inspection by Contractor at Location 3 - Deg1
A4790	Joint Site and Facility Inspection with Interface Contractor at Location 3 - Deg1
A4800	Pre Site and Facility Inspection by Contractor at Location 3 - Deg2
A4810	Joint Site and Facility Inspection with Interface Contractor at Location 3 - Deg2
A4820	Pre Site and Facility Inspection by Contractor at Location 3a - Deg1
A4830	Joint Site and Facility Inspection with Interface Contractor at Location 3a - Deg1
A4840	Pre Site and Facility Inspection by Contractor at Location 3a - Deg2
A4850	Joint Site and Facility Inspection with Interface Contractor at Location 3a - Deg2
A4851	Joint Site and Facility Inspection with Interface Contractor at Location 3a for Server Installation
A4860	Pre Site and Facility Inspection by Contractor at Location 4 - Deg1
A4870	Joint Site and Facility Inspection with Interface Contractor at Location 4 - Deg1
A4880	Pre Site and Facility Inspection by Contractor at Location 4 - Deg2
A4890	Joint Site and Facility Inspection with Interface Contractor at Location 4 - Deg2
A4891	Pre Site and Facility Inspection by Contractor at Location 4a - Deg1



Programme No.: HZMB-DWP  
Data Date: 14-Aug-15

- █ Actual Level of Effort
- █ Actual Work
- █ Remaining Work
- █ Critical Remaining Work
- ◆ Milestone
- ▬ summary

Hong Kong-Zhuhai-Macao Bridge  
Hong Kong Boundary Crossing  
Facilities - Automatic Vehicle  
Clearance Support System (AVCSS)



Date	Revision	Checked	Approved
14-Nov-16	Rev.: 0	WC	LC





Activity ID	Activity Name	2015			2016				2017				2018				2019	
		Q2	Q3	Q4	Q1	Q2	Q3	Q4	Q1	Q2	Q3	Q4	Q1	Q2	Q3	Q4	Q1	Q2
A5360	Pre Site and Facility Inspection by Contractor at Location 16 - Deg2																	
A5370	Joint Site and Facility Inspection with Interface Contractor at Location 16 - Deg2																	
A5375	Pre Site and Facility Inspection by Contractor at Location 17 - Deg1																	
A5378	Joint Site and Facility Inspection with Interface Contractor at Location 17 - Deg1																	
A5380	Pre Site and Facility Inspection by Contractor at Location 17 - Deg2																	
A5390	Joint Site and Facility Inspection with Interface Contractor at Location 17 - Deg2																	
A5395	Pre Site and Facility Inspection by Contractor at Location 18 - Deg1																	
A5396	Joint Site and Facility Inspection with Interface Contractor at Location 18 - Deg1																	
A5400	Pre Site and Facility Inspection by Contractor at Location 18 - Deg2																	
A5410	Joint Site and Facility Inspection with Interface Contractor at Location 18 - Deg2																	
A5420	Pre Site and Facility Inspection by Contractor at Location 19 - Deg1																	
A5430	Joint Site and Facility Inspection with Interface Contractor at Location 19 - Deg1																	
A5440	Pre Site and Facility Inspection by Contractor at Location 19 - Deg2																	
A5450	Joint Site and Facility Inspection with Interface Contractor at Location 19 - Deg2																	
A5470	Pre Site and Facility Inspection by Contractor at Inbound Vehicle Clearance Plaza																	
A5480	Joint Site and Facility Inspection with Interface Contractor at Inbound Vehicle Clearance Plaza																	
A5490	Pre Site and Facility Inspection by Contractor at Outbound Vehicle Clearance Plaza																	
A5550	Joint Site and Facility Inspection with Interface Contractor at Outbound Vehicle Clearance Plaza																	
<b>Access Dates</b>		<p>24-Jun-17, Access Dates</p> <ul style="list-style-type: none"> <li>◆ Location 1(PCB (001) Basement)-Deg1 (270d), 10-May-16*</li> <li>◆ Location 1(PCB (001) ELV Room (Grid Line E3))-Deg1 (270d), 10-May-16*</li> <li>◆ Location 2(PCB (001) First Floor Main Server Room)-Deg1 (330d), 09-Jul-16*</li> <li>◆ Location 2(PCB (001) First Floor Main Server Room)-Deg2 (380d), 28-Aug-16*</li> <li>◆ Location 2(PCB (001) First Floor Main Server Room) - For Server Installation, 28-Aug-16*</li> <li>◆ Location 2(PCB (001) Ground Floor ELV Room (Grid Line E3)) - Deg1 (330d), 09-Jul-16*</li> <li>◆ Location 2(PCB (001) Ground Floor DOH Port Health Control Room (Grid Line BD5)) - Deg1 (330d), 09-Jul-16*</li> <li>◆ Location 2(PCB (001) Ground Floor DOH Port Health Control Room (Grid Line BD5)) - Deg2 (380d), 28-Aug-16*</li> <li>◆ Location 3(Inbd Cargo Exam Bldg (037) MDF Room)-Deg1 (400d), 17-Sep-16*</li> <li>◆ Location 3(Inbd Cargo Exam Bldg (037) ELV Room)-Deg1 (400d), 17-Sep-16*</li> <li>◆ Location 3(Inbd Cargo Exam Bldg (037) Platform Control Room)-Deg1 (400d), 17-Sep-16*</li> <li>◆ Location 3(Inbd Cargo Exam Bldg (037) Platform Control Room)-Deg2 (500d), 17-Sep-16*</li> <li>◆ Location 3(Inbd Cargo Exam Bldg (037) Inspector Offices 128,129,130,131,128,129,140,141)-Deg1 (400d), 17-Sep-16*</li> <li>◆ Location 3(Inbd Cargo Exam Bldg (037) Inspector Offices 128,129,130,131,128,129,140,141)-Deg2 (500d), 17-Sep-16*</li> <li>◆ Location 3a(Inbd Cargo Exam Bldg ROCARS Room)-Deg1 (-), 17-Sep-16*</li> <li>◆ Location 3a(Inbd Cargo Exam Bldg ROCARS Room)-Deg2 (480d), 06-Dec-16*</li> <li>◆ Location 3a(Inbd Cargo Exam Bldg Main Server Room)-Deg1 (-), 17-Sep-16*</li> <li>◆ Location 3a(Inbd Cargo Exam Bldg Main Server Room)-Deg2 (480d), 06-Dec-16*</li> <li>◆ Location 3a(Inbd Cargo Exam Bldg Main Server Room) - For Server installation, 06-Dec-16*</li> <li>◆ Location 4(Outbd Cargo Exam Bldg (023))-Deg1 (530d), 25-Jan-17*</li> <li>◆ Location 4(Outbd Cargo Exam Bldg (023))-Deg2 (680d), 24-Jun-17*</li> <li>◆ Location 4a(Outbd Cargo Exam Bldg (023))-Deg1 (-), 25-Jan-17*</li> </ul>																

Programme No.: HZMB-DWP  
Data Date: 14-Aug-15

- █ Actual Level of Effort
- █ Actual Work
- █ Remaining Work
- █ Critical Remaining Work
- ◆ Milestone
- ▬ summary

Hong Kong-Zhuhai-Macao Bridge  
Hong Kong Boundary Crossing  
Facilities - Automatic Vehicle  
Clearance Support System (AVCSS)



Date	Revision	Checked	Approved
14-Nov-16	Rev.: 0	WC	LC

Activity ID	Activity Name	2015		2016				2017				2018				2019		
		Q2	Q3	Q1	Q2	Q3	Q4	Q1	Q2	Q3	Q4	Q1	Q2	Q3	Q4	Q1	Q2	
A1162	Location 4a(Outbd Cargo Exam Bldg (023))-Deg2 (630d)																	◆ Location 4a(Outbd Cargo Exam Bldg (023))-Deg2 (630d), 05-May-17*
A1170	Location 5(Common Utility Enclosure & Staff Subway)-Deg1 (320d)																	◆ Location 5(Common Utility Enclosure & Staff Subway)-Deg1 (320d), 29-Jun-16*
A1180	Location 5(Common Utility Enclosure & Staff Subway)-Deg2 (-)																	◆ Location 5(Common Utility Enclosure & Staff Subway)-Deg2 (-), 16-Nov-16*
A1190	Location 6(Common Utility Enclosure & Staff Subway)-Deg1 (400d)																	◆ Location 6(Common Utility Enclosure & Staff Subway)-Deg1 (400d), 17-Sep-16*
A1200	Location 6(Common Utility Enclosure & Staff Subway)-Deg2 (-)																	◆ Location 6(Common Utility Enclosure & Staff Subway)-Deg2 (-), 06-Nov-16*
A1210	Location 7(Common Utility Enclosure & Staff Subway)-Deg1 (270d)																	◆ Location 7(Common Utility Enclosure & Staff Subway)-Deg1 (270d), 10-May-16*
A1230	Location 8(Inbd Private Car Annex (025))-Deg1 (430d)																	◆ Location 8(Inbd Private Car Annex (025))-Deg1 (430d), 17-Oct-16*
A1240	Location 8(Inbd Private Car Annex (025))-Deg2 (580d)																	◆ Location 8(Inbd Private Car Annex (025))-Deg2 (580d), 16-May-17*
A1241	Location 8(Inbd Private Car Annex (025) Canopy)-Deg1 (430d)																	◆ Location 8(Inbd Private Car Annex (025) Canopy)-Deg1 (430d), 17-Oct-16*
A1242	Location 8(Inbd Private Car Annex (025) Canopy)-Deg2 (580d)																	◆ Location 8(Inbd Private Car Annex (025) Canopy)-Deg2 (580d), 16-May-17*
A1250	Location 9(Outbd Private Car Annex (032))-Deg1 (520d)																	◆ Location 9(Outbd Private Car Annex (032))-Deg1 (520d), 15-Jan-17*
A1260	Location 9(Outbd Private Car Annex (032))-Deg2 (660d)																	◆ Location 9(Outbd Private Car Annex (032))-Deg2 (660d), 04-Jun-17*
A1261	Location 9(Outbd Private Car Annex (032) Canopy)-Deg1 (520d)																	◆ Location 9(Outbd Private Car Annex (032) Canopy)-Deg1 (520d), 15-Jan-17*
A1262	Location 9(Outbd Private Car Annex (032) Canopy)-Deg2 (660d)																	◆ Location 9(Outbd Private Car Annex (032) Canopy)-Deg2 (660d), 04-Jun-17*
A1270	Location 10(Shuttle Bus Kiosks (006))-Deg1 (480d)																	◆ Location 10(Shuttle Bus Kiosks (006))-Deg1 (480d), 06-Dec-16*
A1280	Location 10(Shuttle Bus Kiosks (006))-Deg2 (550d)																	◆ Location 10(Shuttle Bus Kiosks (006))-Deg2 (550d), 14-Feb-17*
A1281	Location 10(Shuttle Bus Kiosks (006) Canopy)-Deg1 (480d)																	◆ Location 10(Shuttle Bus Kiosks (006) Canopy)-Deg1 (480d), 06-Dec-16*
A1282	Location 10(Shuttle Bus Kiosks (006) Canopy)-Deg2 (550d)																	◆ Location 10(Shuttle Bus Kiosks (006) Canopy)-Deg2 (550d), 14-Feb-17*
A1290	Location 11(Outbd Coach Kiosks (009))-Deg1 (400d)																	◆ Location 11(Outbd Coach Kiosks (009))-Deg1 (400d), 17-Sep-16*
A1300	Location 11(Outbd Coach Kiosks (009))-Deg2 (480d)																	◆ Location 11(Outbd Coach Kiosks (009))-Deg2 (480d), 06-Dec-16*
A1301	Location 11(Outbd Coach Kiosks (009) Canopy)-Deg1 (400d)																	◆ Location 11(Outbd Coach Kiosks (009) Canopy)-Deg1 (400d), 17-Sep-16*
A1302	Location 11(Outbd Coach Kiosks (009) Canopy)-Deg2 (480d)																	◆ Location 11(Outbd Coach Kiosks (009) Canopy)-Deg2 (480d), 06-Dec-16*
A1303	Location 11(Inbd Coach Kiosks (010))-Deg1 (400d)																	◆ Location 11(Inbd Coach Kiosks (010))-Deg1 (400d), 17-Sep-16*
A1304	Location 11(Inbd Coach Kiosks (010))-Deg2 (480d)																	◆ Location 11(Inbd Coach Kiosks (010))-Deg2 (480d), 06-Dec-16*
A1305	Location 11(Inbd Coach Kiosks (010) Canopy)-Deg1 (400d)																	◆ Location 11(Inbd Coach Kiosks (010) Canopy)-Deg1 (400d), 17-Sep-16*
A1306	Location 11(Inbd Coach Kiosks (010) Canopy)-Deg2 (480d)																	◆ Location 11(Inbd Coach Kiosks (010) Canopy)-Deg2 (480d), 06-Dec-16*
A1310	Location 12(Inbd Private Car Kiosks(027))-Deg1 (400d)																	◆ Location 12(Inbd Private Car Kiosks(027))-Deg1 (400d), 17-Sep-16*
A1311	Location 12(Inbd Private Car Kiosks(027))-Deg2 (480d)																	◆ Location 12(Inbd Private Car Kiosks(027))-Deg2 (480d), 06-Dec-16*
A1312	Location 12(Inbd Private Car Kiosks(027) Canopy)-Deg1 (400d)																	◆ Location 12(Inbd Private Car Kiosks(027) Canopy)-Deg1 (400d), 17-Sep-16*
A1313	Location 12(Inbd Private Car Kiosks(027) Canopy)-Deg2 (480d)																	◆ Location 12(Inbd Private Car Kiosks(027) Canopy)-Deg2 (480d), 06-Dec-16*
A1314	Location 12(Inbd GV Kiosks (028))-Deg1 (400d)																	◆ Location 12(Inbd GV Kiosks (028))-Deg1 (400d), 17-Sep-16*
A1315	Location 12(Inbd GV Kiosks (028))-Deg2 (480d)																	◆ Location 12(Inbd GV Kiosks (028))-Deg2 (480d), 06-Dec-16*
A1316	Location 12(Inbd GV Kiosks (028) Canopy)-Deg1 (400d)																	◆ Location 12(Inbd GV Kiosks (028) Canopy)-Deg1 (400d), 17-Sep-16*
A1317	Location 12(Inbd GV Kiosks (028) Canopy)-Deg2 (480d)																	◆ Location 12(Inbd GV Kiosks (028) Canopy)-Deg2 (480d), 06-Dec-16*
A1318	Location 12(Outbd GV Kiosks (029))-Deg1 (400d)																	◆ Location 12(Outbd GV Kiosks (029))-Deg1 (400d), 17-Sep-16*
A1319	Location 12(Outbd GV Kiosks (029))-Deg2 (480d)																	◆ Location 12(Outbd GV Kiosks (029))-Deg2 (480d), 06-Dec-16*
A1320	Location 12(Outbd GV Kiosks (029) Canopy)-Deg1 (400d)																	◆ Location 12(Outbd GV Kiosks (029) Canopy)-Deg1 (400d), 17-Sep-16*
A1321	Location 12(Outbd GV Kiosks (029) Canopy)-Deg2 (480d)																	◆ Location 12(Outbd GV Kiosks (029) Canopy)-Deg2 (480d), 06-Dec-16*
A1330	Location 13(Outbd Private Car Kiosks (030))-Deg1 (480d)																	◆ Location 13(Outbd Private Car Kiosks (030))-Deg1 (480d), 06-Dec-16*
A1340	Location 13(Outbd Private Car Kiosks (030))-Deg2 (550d)																	◆ Location 13(Outbd Private Car Kiosks (030))-Deg2 (550d), 14-Feb-17*
A1341	Location 13(Outbd Private Car Kiosks (030) Canopy)-Deg1 (480d)																	◆ Location 13(Outbd Private Car Kiosks (030) Canopy)-Deg1 (480d), 06-Dec-16*
A1342	Location 13(Outbd Private Car Kiosks (030) Canopy)-Deg2 (550d)																	◆ Location 13(Outbd Private Car Kiosks (030) Canopy)-Deg2 (550d), 14-Feb-17*
A1350	Location 14(Future-Outbd/Inbd Private Car Kiosks)-Deg1 (610d)																	◆ Location 14(Future-Outbd/Inbd Private Car Kiosks)-Deg1 (610d), 15-Apr-17*
A1370	Location 15(Inbd Traffic Control Kiosk (100))-Deg1 (400d)																	◆ Location 15(Inbd Traffic Control Kiosk (100))-Deg1 (400d), 17-Sep-16*
A1380	Location 15(Inbd Traffic Control Kiosk (100))-Deg2 (480d)																	◆ Location 15(Inbd Traffic Control Kiosk (100))-Deg2 (480d), 06-Dec-16*

Programme No.: HZMB-DWP Data Date: 14-Aug-15		Hong Kong-Zhuhai-Macao Bridge Hong Kong Boundary Crossing Facilities - Automatic Vehicle Clearance Support System (AVCSS)		Date	Revision	Checked	Approved
				14-Nov-16	Rev.: 0	WC	LC

Activity ID	Activity Name	2015		2016				2017				2018				2019			
		Q2	Q3	Q1	Q2	Q3	Q4	Q1	Q2	Q3	Q4	Q1	Q2	Q3	Q4	Q1	Q2		
A1390	Location 16(Outbd Traffic Control Kiosk (101))-Deg1 (400d)																		
A1400	Location 16(Outbd Traffic Control Kiosk (101))-Deg2 (480d)																		
A1410	Location 17(Inbd Private Car Exam Bldg(033))-Deg1 (-)																		
A1420	Location 17(Inbd Private Car Exam Bldg(033))-Deg2 (550d)																		
A1430	Location 18(Outbd Private Car Exam Bldg(024))-Deg1 (-)																		
A1440	Location 18(Outbd Private Car Exam Bldg(024))-Deg2 (670d)																		
A1450	Location 19(DOH Cargo Clearance Bldg(043))-Deg1 (-)																		
A1460	Location 19(DOH Cargo Clearance Bldg(043))-Deg2 (550d)																		
A1461	Underground Ducting between Inbd Cargo Exam Bldg (037) and DOH Cargo Clearance Bldg (043) and CUE																		
A1462	Underground Ducting between Inbd Cargo Exam Bldg (037) and Inbd Vehicle Clearance Plaza																		
A1463	Underground Ducting between CUE and Outbd Car Exam Bldg (023)																		
A1464	Underground Ducting Between Outbd Cargo Exam Bldg (023) and Outbd Vehicle Clearance Plaza																		
A1465	Underground Ducting between CUE and Outbd Vehicle Clearance Plaza																		
A1466	Underground Ducting between CUE and Inbd P. Car Annex (025) and Shuttle Bus Kiosks (006)																		
A1467	Underground Ducting between PCB(001) and Inbd Coach Kiosks(010)																		
A1468	Underground Ducting between CUE and Outbd PCA (032)																		
A1478	Inbound Vehicle Clearance Plaza (Assume same as Location 3)																		
A1488	Outbound Vehicle Clearance Plaza (Assume same as Location 4 degree 1 + 51 day)																		
<b>Interfaces Provisions</b>																			
A7000	Inbound VID foundation and mounting structure (assume same as Access date of Inbound Vehicle Clearance Plaza)																		
A7010	Inbound VTS foundation and mounting poles (assume same as Access date of Inbound Vehicle Clearance Plaza)																		
A7020	Inbound TLS foundation and mounting poles (assume same as Access date of Inbound Vehicle Clearance Plaza)																		
A7030	Outbound VID foundation and mounting structure (assume same as Access date of Outbound Vehicle Clearance Plaza)																		
A7040	Outbound VTS foundation and mounting poles (assume same as Access date of Outbound Vehicle Clearance Plaza)																		
A7050	Outbound TLS foundation and mounting poles (assume same as Access date of Outbound Vehicle Clearance Plaza)																		
<b>WA4 Site Erection &amp; Servicing</b>																			
A1740	Possession of Site																		
A1750	Method Statement & Drawing																		
A1760	Place Order to prepare materials																		
A1770	Review, revise and approve method statement																		
A1780	Equipment mobilization and construction material delivered to the site																		
A1790	Set up the alignment and level of the u-channel																		
A1800	Trial pit excavation																		
A1801	Excavation for chain-link fence footing																		
A4540	Underground Utility detection																		
A4550	Delivery of asphalt and fencing materials																		
A4560	Trimming and leveling soil surface for paving asphalt material																		
A4570	Remove the vegetation and lose material on the soil surface by backhoe																		
A4580	Set out the alignment and level of the u-channel																		

Programme No.: HZMB-DWP  
Data Date: 14-Aug-15

- Actual Level of Effort
- Actual Work
- Remaining Work
- Critical Remaining Work
- Milestone
- summary

Hong Kong-Zhuhai-Macao Bridge  
Hong Kong Boundary Crossing  
Facilities - Automatic Vehicle  
Clearance Support System (AVCSS)



Date	Revision	Checked	Approved
14-Nov-16	Rev.: 0	WC	LC

Activity ID	Activity Name	2015		2016				2017				2018				2019		
		Q2	Q3	Q4	Q1	Q2	Q3	Q4	Q1	Q2	Q3	Q4	Q1	Q2	Q3	Q4	Q1	Q2
A4590	Installation of fencing post along the site boundary																	
A4600	Excavation for underground drainage pipe																	
A4610	Evenly spread the asphalt scrap material by backhoe																	
A4620	Cast concrete for the u-channel and underground drainage pipe																	
A4630	Remove the u-channel framework																	
A4640	Installation of chain-link fencing along the site boundary																	
A4650	Installation of access doors																	
A4660	Excavation for drainage ditch																	
A4670	Cast concrete for the drainage ditch																	
A4680	Compact the asphalt scrap material																	
A4690	Land surveying																	
A4700	Inspection of chain-link fencing and access doors																	
A4710	Testing of drains																	
A4720	Completion of the works																	
<b>Detailed Design Specification</b>																		
A1808	Preliminary System Proposal Submission																	
A1809	Engineer's agreement with preliminary system proposal																	
A1810	Draft Detailed Design Specification (DDS) Submission																	
A1814	Draft Hardware Function Design Specification for Computer system and Network system (HFD)																	
A1815	Draft Software Function Design Specification for Computer system and Network system (SFD)																	
A1820	Engineer's Review and Approval for Draft Detailed Design Specification (DDS)																	
A1823	Engineer's Review and Approval for Draft Hardware FDS for Computer system and Network system (HFD)																	
A1824	Engineer's Review and Approval for Draft Software FDS for Computer system and Network system (SFD)																	
A1829	Interface Requirements for CED (LBS, CED IT Server, Metro-Ethernet) and IMMD (AVCS)																	
A1830	Final DDS Submission (AVCSS,VTS,VIDS)(Phase 1/Section I)																	
A1831	Development of System Security Plan																	
A1840	Engineer's Review and Approval for Final DDS Submission including System Security Plan (AVCSS)(Phase 1/Section I)																	
A1850	Final DDS Submission (AVCSS)(Phase 2/Section II&III)																	
A1860	Engineer's Review and Approval for DDS Submission (AVCSS)(Phase 2/Section II&III)																	
<b>Construction Design and Management</b>																		
A6920	Construction Health and Safety Plan Submission																	
A6930	Construction Health and Safety Plan reviewed by Engineer																	
<b>Supply/Manufacture Mock-up items</b>																		
A4749	Preparation of Kiosk equipment Mock-up																	
A4750	Installation of Kiosk equipment Mock-up																	
<b>Supply/Manufacture prototypes</b>																		
A2900	Manufacture LED Display Prototype (VID, ODB and XDB)																	
A2910	Manufacture All-In-One Panel Prototype (AIOP)																	
<b>Software Design, Coding and Testing</b>																		

Programme No.: HZMB-DWP Data Date: 14-Aug-15		Hong Kong-Zhuhai-Macao Bridge Hong Kong Boundary Crossing Facilities - Automatic Vehicle Clearance Support System (AVCSS)		Date	Revision	Checked	Approved
				14-Nov-16	Rev.: 0	WC	LC

Activity ID	Activity Name	2015		2016				2017				2018				2019	
		Q2	Q3	Q1	Q2	Q3	Q4	Q1	Q2	Q3	Q4	Q1	Q2	Q3	Q4	Q1	Q2
<b>Coding</b>		05-Jan-17, Coding CCS, SURCON, SYSCON, CDDBS Development Stage 1 VTS Development Stage 1 VIDS Development Stage 1 CCS, SURCON, SYSCON, CDDBS Development Stage 2 VTS Development Stage 2 VIDS Development Stage 2															
<b>Software System Inetgration</b>		22-May-17, Software System Inetgration Test Plan Documentation Submission Engineer's Review and Approval for Test Plan Documentation Submission Software System Integration Test CCS/SYSCON/SURCON/CDDBS/VTS/VIDS Software Enhancement Software User Acceptance Test (UAT)															
<b>Prototype &amp; Software Simulation Tests</b>		09-Sep-16, Prototype & Software Simulation Tests Prototype Test Document Engineer's Approval for Testing Document CCWS with CDDBS, SURCON and SYSCON (Software Simulation/ Software Integration Test) Vehicle Tracking System (VTS) (Software Simulation/ Software Integration Test) LED Displays (VID, ODB and XDB) All-In-One Panel (AIOP) Prototype Testing Report Submission Engineer's Approval for Prototype Testing Report															
<b>Procurement - Phase 1 / Section I</b>		27-Dec-16, Procurement - Phase 1 / Section I Procurement of Equipment for Phase 1/Section I Procurement of Cable and Accessories for Phase 1 /Section I Procurement of All Servers and Workstations															
<b>Supply/Manufacture products for FAT</b>		10-Nov-16, Supply/Manufacture products for FAT Supply/Manufacture LED Display (ODB, VID and XDB) for FAT Supply/Manufacture All-In-One Panel (AIOP) for FAT Supply/Manufacture off-the-shelf equipment for FAT															
<b>Factory Acceptance Test (FAT)</b>		12-Dec-16, Factory Acceptance Test (FAT) FAT Procedure Document Engineer's Approval for FAT Procedure Document FAT for Licence Plate Recognition System (LPRS) FAT for PA/Intercom FAT for ODB FAT for XDB FAT for VID FAT for Video Management System (VMS) FAT for Vehicle Tracking System (VTS) FAT for Communication Network (CMN) FAT for All-In-One Panel (AIOP) FAT for AVCSS System Test FAT Report Submission															

Programme No.: HZMB-DWP  
Data Date: 14-Aug-15

- █ Actual Level of Effort
- █ Actual Work
- █ Remaining Work
- █ Critical Remaining Work
- ◆ Milestone
- ▾ summary

Hong Kong-Zhuhai-Macao Bridge  
Hong Kong Boundary Crossing  
Facilities - Automatic Vehicle  
Clearance Support System (AVCSS)



Date	Revision	Checked	Approved
14-Nov-16	Rev.: 0	WC	LC

Activity ID	Activity Name	2015				2016				2017				2018				2019		
		Q2	Q3	Q4		Q1	Q2	Q3	Q4	Q1	Q2	Q3	Q4	Q1	Q2	Q3	Q4	Q1	Q2	
A4370	Engineer's Approval for FAT Report Submission																			
<b>Supply/Manufacture Equipment</b>																				
A6830	Supply/Manufacture LED (ODB, VID and XDB) Display for installation																			
A6840	Supply/Manufacture AIOF for installation																			
<b>Delivery and Bench Acceptance Test for Phase 1/ Section I</b>																				
A6740	Material On-Site for Phase 1/Section I																			
A6750	Material Bench Acceptance Test for Phase 1/Section I																			
A6850	Cable On-Site for Phase 1/Section I																			
A6960	AIOF On-Site for Phase 1/Section I																			
A6970	AIOF Bench Acceptance Test for Phase 1/Section I																			
A6980	LED (ODB, VID and XDB) On-Site for Phase 1/Section I																			
A6990	LED (ODB, VID and XDB) Bench Acceptance Test for Phase 1/Section I																			
<b>Installation - Phase 1 / Section I</b>																				
<b>Location 1(PCB (001) Basement)</b>																				
A3081	Cable Laying and termination at Location 1 and Location 2																			
<b>Location 1(PCB (001) ELV Room (Grid Line E3))</b>																				
A3101	Cable Laying and termination at Location 1 and Location 2																			
<b>Location 2(PCB (001) Ground Floor ELV Room (Grid Line E3))</b>																				
A3121	Cable Laying and termination at Location 1 and Location 2																			
<b>Location 2(PCB (001) Ground Floor DOH Port Health Control Room (Grid Line BD))</b>																				
A2041	Cable Laying and termination at Location 1 and Location 2																			
A2042	Cable Testing																			
A2043	Intercom and PA system Installation																			
A2044	Intercom and PA system tuning																			
<b>Location 2(PCB (001) First Floor Main Server Room)</b>																				
A2001	Cable Laying and termination at Location 1 and Location 2																			
A2002	Cable Testing																			
A2003	AVCSS Network and Server Installation																			
A2004	AVCSS Network and Server Tuning																			
<b>Location 3(Inbd Cargo Exam Bldg (037) Inspector Offices 128,129,130,131,128,12)</b>																				
A3241	Cable Laying and termination in Location 3 and Location 3a																			
A3242	AVCSS SURCON WS and 55" LCD Installation																			
A3243	VTS WS Installation																			
A3245	SURCON, WS Tuning																			
<b>Location 3(Inbd Cargo Exam Bldg (037) ELV Room)</b>																				
A3210	Cable Laying and termination between Location 3 and CUE																			
<b>Location 3(Inbd Cargo Exam Bldg (037) Platform Control Room)</b>																				
A2071	Cable Laying and termination in Location 3 and Location 3a																			
A2072	AVCSS SYSCON WS and 55" TV Wall Installation																			
A2074	AVCSS SYSCON WS Tuning																			
<b>Location 3(Inbd Cargo Exam Bldg (037) MDF Room)</b>																				
A3190	Cable Laying and termination between Location 3 and CUE																			
<b>Location 3a(Inbd Cargo Exam Bldg (037) ROCARS Room)</b>																				
A2091	Cable Laying and termination in Location 3 and Location 3a																			
A2092	AVCSS SYSCON,SURCON and Intercom Installation																			

Programme No.: HZMB-DWP  
Data Date: 14-Aug-15

- Actual Level of Effort
- Actual Work
- Remaining Work
- Critical Remaining Work
- Milestone
- summary

Hong Kong-Zhuhai-Macao Bridge  
Hong Kong Boundary Crossing  
Facilities - Automatic Vehicle  
Clearance Support System (AVCSS)



Date	Revision	Checked	Approved
14-Nov-16	Rev.: 0	WC	LC

Activity ID	Activity Name	2015		2016				2017				2018				2019	
		Q2	Q3	Q1	Q2	Q3	Q4	Q1	Q2	Q3	Q4	Q1	Q2	Q3	Q4	Q1	Q2
A2093	VTS WS Installation																
A2094	VID WS Installation																
A2096	SURCON, SYSCON, WS Tuning																
<b>Location 3a(Inbd Cargo Exam Bldg Main Server Room)</b>																	
A3330	Cable Laying and termination in Location 3 and Location 3a																
A3340	AVCSS Server Installation																
A3350	VTS Server Installation																
A3360	Servers Tuning																
<b>Location 4(Outbd Cargo Exam Bldg (023) MDF Room)</b>																	
A3410	Cable Laying and termination between CUE and Location 4																
<b>Location 4 and 4a(Outbd Cargo Exam Bldg (023) ROCARS Room)</b>																	
A3370	Cable Laying and termination in Location 4 and 4a																
A3380	AVCSS SYSCON, SURCON and Intercom Installation																
A3390	VTS WS Installation																
A3400	SYSCON, SURCON, WS Tuning																
<b>Location 5(Common Utility Enclosure &amp; Staff Subway)</b>																	
A3430	Cable Laying between Location 5 and Location 7																
A3440	Cable Laying between Location 5 and Location 6																
A3480	ODB Switch Installation at EL Room 2-7																
<b>Location 6(Common Utility Enclosure &amp; Staff Subway)</b>																	
A3450	Cable Laying between Location 5 and Location 6																
A3490	ODB Switch Installation at EL Room 8-9,11-12																
<b>Location 7(Common Utility Enclosure &amp; Staff Subway)</b>																	
A3470	Cable Laying between Location 5 and Location 7																
<b>Location 12(Inbd Private Car Kiosks,GV Kiosks (027,028,029))</b>																	
<b>Inbd Private Car Kiosks(027) - 9 nos (Phase 1)</b>																	
A2452	Cable Containment in Kiosks																
A2453	Cable Laying and termination																
A2454	Cable Splicing, Testing and Labeling																
A2460	AVCSS/DOH/MOM Kiosk Equipment Installation (9 nos)																
A2470	ODB & XDB installation (9 nos)																
A4380	Inbd Private Car Kiosk Installation Complete																
<b>Inbd Goods Vehicle Kiosks(028) - 5 nos (Phase 1)</b>																	
A2532	Cable Containment in Kiosks																
A2533	Cable Laying and termination																
A2534	Cable Splicing, Testing and Labeling																
A2540	AVCSS/DOH/MOM Kiosk Equipment Installation (5 nos)																
A2550	AIOP Installation (5 nos)																
A2560	ODB & XDB installation (5 nos)																
A4390	Inbd Goods Vehicle Kiosks Installation Complete																
<b>Outbd Goods Vehicle Kiosks(029) - 5 nos (Phase 1)</b>																	
A2572	Cable Containment in Kiosks																
A2573	Cable Laying and termination																
A2574	Cable Splicing, Testing and Labeling																
A2580	AVCSS/DOH/MOM Kiosk Equipment Installation (5 nos)																

Programme No.: HZMB-DWP  
Data Date: 14-Aug-15

- Actual Level of Effort
- Actual Work
- Remaining Work
- Critical Remaining Work
- Milestone
- summary

Hong Kong-Zhuhai-Macao Bridge  
Hong Kong Boundary Crossing  
Facilities - Automatic Vehicle  
Clearance Support System (AVCSS)



Date	Revision	Checked	Approved
14-Nov-16	Rev.: 0	WC	LC

Activity ID	Activity Name	2015		2016				2017				2018				2019	
		Q2	Q3	Q1	Q2	Q3	Q4	Q1	Q2	Q3	Q4	Q1	Q2	Q3	Q4	Q1	Q2
A2590	AIOP Installation (5 nos)																
A2600	ODB & XDB installation (5 nos)																
A4400	Outbd Goods Vehicle Kiosks Installation Complete																
<b>Location 13(Outbd Private Car Kiosks (030)) - 9 nos (Phase 1)</b>																	
A3582	Cable Containment in Kiosks																
A3583	Cable Laying and termination																
A3584	Cable Splicing, Testing and Labeling																
A3590	AVCSS/DOH/MOM Kiosk Equipment Installation (9 nos)																
A3600	ODB & XDB installation (9 nos)																
A4410	Outbd Private Car Kiosks Installation Complete																
<b>Location 14(Future-Outbd/Inbd Private Car Kiosks) - 6+6 nos</b>																	
A2441	Cable Laying and termination at ELV Room in CUE																
<b>Location 15(Inbd Traffic Control Kiosk (100))</b>																	
A3651	Cable Laying and termination																
A3652	AVCSS SYSCON, SURCON Installation																
A3660	VTS WS and 55" LCD Installation																
A3670	SYSCON, SURCON, WS Tuning																
<b>Location 16(Outbd Traffic Control Kiosk (101))</b>																	
A3701	Cable Laying and termination																
A3702	AVCSS SYSCON, SURCON Installation																
A3710	VTS WS and 55" LCD Installation																
<b>Location 17(Inbd Private Car Exam Bldg(033) Operational Office)</b>																	
A3750	Cable Laying and termination																
A3760	AVCSS SURCON and 55" LCD Installation																
A3770	SURCON Tuning																
<b>Location 18 (Outbd Private Car Exam Bldg(024) Operational Office)</b>																	
A3780	Cable Laying and termination																
A3790	AVCSS SURCON and 55" LCD Installation																
<b>Location 19 (DOH Cargo Clearance Bldg(043))</b>																	
A2111	Cable Laying and termination between Location 19 and CUE																
A2112	Cable Laying in Location 19																
A2113	PA and Intercom Installation																
A2123	PA and Intercom Tuning																
<b>Inbd Vehicle Clearance Plaza - 8 nos VID, 7 nos VTS, 4 nos TLS</b>																	
A4050	Inbound VID cabling from pillar box to VID field equipment																
A4052	Inbound VTS cabling from pillar box to VTS field equipment																
A4054	Inbound TLS cabling from pillar box to TLS field equipment																
A4060	Inbound VID field equipment installation (8 VID)																
A4062	Inbound VTS field equipment installation (4 RFID + 3 Cameras)																
A4064	Inbound TLS field equipment installation (4 TLS)																
A4066	Inbound VID, VTS and TLS field equipment tuning																
<b>Outbd Vehicle Clearance Plaza - 8 nos VID, 6 nos VTS, 4 nos TLS</b>																	
A4110	Outbound VID cabling from pillar box to VID field equipment																
A4120	Outbound VTS cabling from pillar box to VTS field equipment																
A4130	Outbound TLS cabling from pillar box to TLS field equipment																

Programme No.: HZMB-DWP  
Data Date: 14-Aug-15

- █ Actual Level of Effort
- █ Actual Work
- █ Remaining Work
- █ Critical Remaining Work
- ◆ Milestone
- ▾ summary

Hong Kong-Zhuhai-Macao Bridge  
Hong Kong Boundary Crossing  
Facilities - Automatic Vehicle  
Clearance Support System (AVCSS)



Date	Revision	Checked	Approved
14-Nov-16	Rev.: 0	WC	LC



Activity ID	Activity Name	2015		2016				2017				2018				2019	
		Q2	Q3	Q1	Q2	Q3	Q4	Q1	Q2	Q3	Q4	Q1	Q2	Q3	Q4	Q1	Q2
A4140	Outbound VID field equipment installation (8 VID)																
A4150	Outbound VTS field equipment installation (3 RFID + 3 Cameras)																
A4170	Outbound TLS field equipment installation (4 TLS)																
A4180	Outbound VID, VTS and TLS field equipment tuning																
<b>Underground Ducting between Inbd Cargo Exam Bldg (037) and CUE</b>																	
A3810	Cable Laying and termination (note: Access Date by C03)																
<b>Underground Ducting between Inbd Cargo Exam Bldg (037) and Inbd Vehicle Clea</b>																	
A3830	Cable Laying and termination (note: Access Date by C03)																
<b>Underground Ducting between CUE and Outbd Car Exam Bldg (023)</b>																	
A3850	Cable Laying and termination (note: Access Date by C03)																
<b>Underground Ducting Between Outbd Cargo Exam Bldg (023) and Outbd Vehicle C</b>																	
A3870	Cable Laying and termination (note: Access Date by C03)																
<b>Underground Ducting between CUE and Outbd Vehicle Clearance Plaza</b>																	
A3890	Cable Laying and termination (note: Access Date by C03)																
<b>On-Site Test and Commissioning (Phase 1 / Section I)</b>																	
A2150	Testing & Commissioning Documents Submission (8 weeks before Testings carried out)																
A2151	Engineer Approval for T&C Document																
A2152	Joint Site Inspection for Permanent Power/Tele-communication for Initial on-site testing																
A2153	Initial on-site Testing & Commissioning																
<b>Site Acceptance Test (Phase 1 / Section I)</b>																	
A6601	Interface Readiness CED(LBS, CED IT, Metro-Ethernet) and IMMD (AVS)																
A6602	SAT for AVCSS																
A6603	SAT for Location 18 (AVCSS SURCON and 55" LCD)																
A6630	SAT Test Document Submission																
A6640	Software Manual Documentations Submission																
<b>Security Risk Assessment and Audit</b>																	
A6800	SRAA (Assessment)																
A6810	Fix per SRAA Assessment																
A6820	SRAA Audit																
<b>Operability Period Test (Phase 1 / Section I)</b>																	
A5610	Joint Site Inspection for utilities, telecom connection and metro ethernet for OPT																
A5620	Operability Period Test (OPT) Phase 1																
A5650	Operability Period Test (OPT) Phase 2																
<b>Completion (Phase 1 /Section I)</b>																	
A2230	AVCSS - Certificate of Completion (Phase 1/Section I)																
A2231	Certificate of Completion Approval by Engineer																
<b>Training and Document (Phase 1 /Section I)</b>																	
A2180	Training Materials & Documentation Submission																
A2190	Operation and Maintenance Training																
<b>Operation (Phase 1 /Section I)</b>																	
A2240	Site Operation (Phase 1/Section I)																
<b>Engineering Support for Phase 1 / Section I</b>																	

Programme No.: HZMB-DWP  
Data Date: 14-Aug-15

- Actual Level of Effort
- Actual Work
- Remaining Work
- Critical Remaining Work
- Milestone
- summary

Hong Kong-Zhuhai-Macao Bridge  
Hong Kong Boundary Crossing  
Facilities - Automatic Vehicle  
Clearance Support System (AVCSS)



Date	Revision	Checked	Approved
14-Nov-16	Rev.: 0	WC	LC

Activity ID	Activity Name	2015		2016				2017				2018				2019	
		Q2	Q3	Q1	Q2	Q3	Q4	Q1	Q2	Q3	Q4	Q1	Q2	Q3	Q4	Q1	Q2
A4420	Engineering Support for Phase 1/Section I																
<b>Procurement - Phase 2 / Section II</b>																	
A3980	Procurement of Lane Field Equipment for Phase 2/Section II																
<b>Delivery and Bench Acceptance Test for Phase 2/Section II</b>																	
A6760	Material On-site for Phase 2/Section II																
A6770	Bench Acceptance Test for Phase 2/Section II																
<b>Instatllation - Phase 2 / Section II</b>																	
<b>Location 8(Inbd Pricate Car Annex (025)) (Phase 2)</b>																	
A4090	Site Preparation																
A4091	Cable Containment in Kiosks																
A4093	Cable Laying and termination																
A4094	Cable Splicing, Testing and Labeling																
A4096	Mobilization of kiosk equipment																
A4100	AVCSS/DOH/MOM Kiosk Equipment Installation (1 no)																
A4430	Inbd Private Car Annex Installation Complete																
<b>Location 9(Outbd Private Car Annex (032)) (Phase 2)</b>																	
A4151	Site Preparation																
A4152	Cable Containment in Kiosks																
A4153	Cable Laying and termination																
A4154	Cable Splicing, Testing and Labeling																
A4156	Mobilization of kiosk equipment																
A4160	AVCSS/DOH/MOM Kiosk Equipment Installation (1 no)																
A4440	Outbd Private Car Annex Installation Complete																
<b>Test and Commissioning (Phase 2 / Section II)</b>																	
A2290	Testing & Commissioning Documents Submission																
A2291	Engineer Approval for T&C Document																
A2292	Initial on-site Testing & Commissioning																
A2300	Site Acceptance Tests (SAT)																
A2310	Operability Period Test (OPT)																
<b>Completion (Phase 2 / Section II)</b>																	
A2320	AVCSS - Certificate of Completion (Phase 2/Section II)																
A4320	Certificate of Completion Approval by Engineer																
<b>Engineering Support for Phase 2 / Section II</b>																	
A4450	Engineering Support for Phase 2/Section II																
<b>Procurement for Phase2 / Section III</b>																	
A4000	Procurement of Lane Field Equipment for Phase 2/Section III																
<b>Delivery and Bench Acceptance Test for Phase2 / Section III</b>																	
A6780	Material On-site for Phase 2/Section III																
A6790	Bench Acceptance Test for Phase 2/Section III																
<b>Installation - Phase 2 / Section III</b>																	
<b>Location 10,11,12,13 (Vehicle Clearance Kiosks)</b>																	
<b>Shuttle Bus Kiosks (006) - 4 nos (Phase 2)</b>																	
A2622	Cable Containment																

Programme No.: HZMB-DWP  
Data Date: 14-Aug-15

- █ Actual Level of Effort
- █ Actual Work
- █ Remaining Work
- █ Critical Remaining Work
- ◆ Milestone
- ▾ summary

Hong Kong-Zhuhai-Macao Bridge  
Hong Kong Boundary Crossing  
Facilities - Automatic Vehicle  
Clearance Support System (AVCSS)



Date	Revision	Checked	Approved
14-Nov-16	Rev.: 0	WC	LC

Activity ID	Activity Name	2015		2016				2017				2018				2019	
		Q2	Q3	Q1	Q2	Q3	Q4	Q1	Q2	Q3	Q4	Q1	Q2	Q3	Q4	Q1	Q2
A2623	Cable Laying and termination																
A2630	AVCSS/DOH/MOM Kiosk Equipment Installation (4 nos)																
A4460	Shuttle Bus Kiosks Installation Complete																
<b>Outbd Coach Kiosks (009) - 4 nos (Phase 2)</b>																	
A2662	Cable Containment																
A2663	Cable Laying and termination																
A2670	AVCSS/DOH/MOM Kiosk Equipment Installation (4 nos)																
A4470	Outbd Coach Kiosks Installation Complete																
<b>Inbd Private Car Kiosks (027) - 12 nos (Phase 2)</b>																	
A2742	Cable Containment																
A2743	Cable Laying and termination																
A2744	Cable Splicing, Testing and Labeling																
A2750	AVCSS/DOH/MOM Kiosk Equipment Installation (12 nos)																
A2760	Kiosk Equipment Configuration (12 nos)																
A4490	Inbd Private Car Kiosks Installation Complete																
<b>Outbd Private Car Kiosks (030) - 12 nos (Phase 2)</b>																	
A2782	Cable Containment																
A2783	Cable Laying and termination																
A2784	Cable Splicing, Testing and Labeling																
A2790	AVCSS/DOH/MOM Kiosk Equipment Installation (12 nos)																
A4500	Outbd Private Car Kiosks Installation Complete																
<b>Inbd Goods Vehicle Kiosks (028) - 3 nos (Phase 2)</b>																	
A2822	Cable Containment																
A2823	Cable Laying and termination																
A2825	Kiosk Equipment Configuration (3 nos)																
A2830	AVCSS/DOH/MOM Kiosk Equipment Installation (3 nos)																
A4510	Inbd Goods Vehicle Kiosks Installation Complete																
<b>Outbd Goods Vehicle Kiosks (029) - 3 nos (Phase 2)</b>																	
A2862	Cable Containment																
A2863	Cable Laying and termination																
A2865	Cable Splicing, Testing and Labeling																
A2870	AVCSS/DOH/MOM Kiosk Equipment Installation (3 nos)																
A4520	Outbd Goods Vehicle Kiosks Installation Complete																
<b>Inbd Coach Kiosks (010) - 4 nos (Phase 2)</b>																	
A2702	Cable Containment																
A2703	Cable Laying and termination																
A2705	Kiosk Equipment Configuration (4 nos)																
A2710	AVCSS/DOH/MOM Kiosk Equipment Installation (2 nos)																
A2720	AVCSS/DOH/MOM Kiosk Equipment Installation (2 nos)																
A4480	Inbd Coach Kiosks Installation Complete																
<b>Underground Ducting between CUE and Shuttle Bus Kiosk (006)</b>																	
A3970	Cable Laying and termination (note: Access Date by C03)																
<b>Underground Ducting between PCB(001) and Inbd Coach Kiosks(010)</b>																	
A3930	Cable Laying and termination (note: Access Date by C03)																
<b>Test and Commissioning (Phase 2 / Section III)</b>																	

Programme No.: HZMB-DWP  
Data Date: 14-Aug-15

- Actual Level of Effort
- Actual Work
- Remaining Work
- Critical Remaining Work
- Milestone
- summary

Hong Kong-Zhuhai-Macao Bridge  
Hong Kong Boundary Crossing  
Facilities - Automatic Vehicle  
Clearance Support System (AVCSS)



Date	Revision	Checked	Approved
14-Nov-16	Rev.: 0	WC	LC

Activity ID	Activity Name	2015			2016				2017				2018				2019	
		Q2	Q3	Q4	Q1	Q2	Q3	Q4	Q1	Q2	Q3	Q4	Q1	Q2	Q3	Q4	Q1	Q2
A2370	Testing & Commissioning Documents Submission (8 weeks before Testings carried out)																	
A2371	Engineer Approval for T&C Document																	
A2373	Initial on-site Testing & Commissioning																	
A2380	Site Acceptance Test (SAT)																	
A2390	Operation Acceptance Test (OPT)																	
<b>Completion (Phase 2 / Section III)</b>																		
A2400	AVCSS - Certificate of Completion (Phase 2/Section III)																	
A4330	Certificate of Completion Approval by Enginner																	
<b>Operation (Phase 2 / Section III)</b>																		
A2420	Site Operation (Phase 2/Section II & III)																	
<b>Defect Liability Period (DLP)</b>																		
A2430	DLP																	
<b>Document Submission (Phase 2 / Section III)</b>																		
A4340	As-built Drawings and O&M Manual																	

Programme No.: HZMB-DWP  
Data Date: 14-Aug-15

- Actual Level of Effort
- Actual Work
- Remaining Work
- Critical Remaining Work
- Milestone
- summary

Hong Kong-Zhuhai-Macao Bridge  
Hong Kong Boundary Crossing  
Facilities - Automatic Vehicle  
Clearance Support System (AVCSS)



Date	Revision	Checked	Approved
14-Nov-16	Rev.: 0	WC	LC