

MATERIALAB CONSULTANTS LIMITED

Room 723 & 725, 7/F, Block B,

Profit Industrial Building,

1-15 Kwai Fung Crescent, Kwai Fong,
Hong Kong.

Tel : (852)-24508238

Fax : (852)-24508032

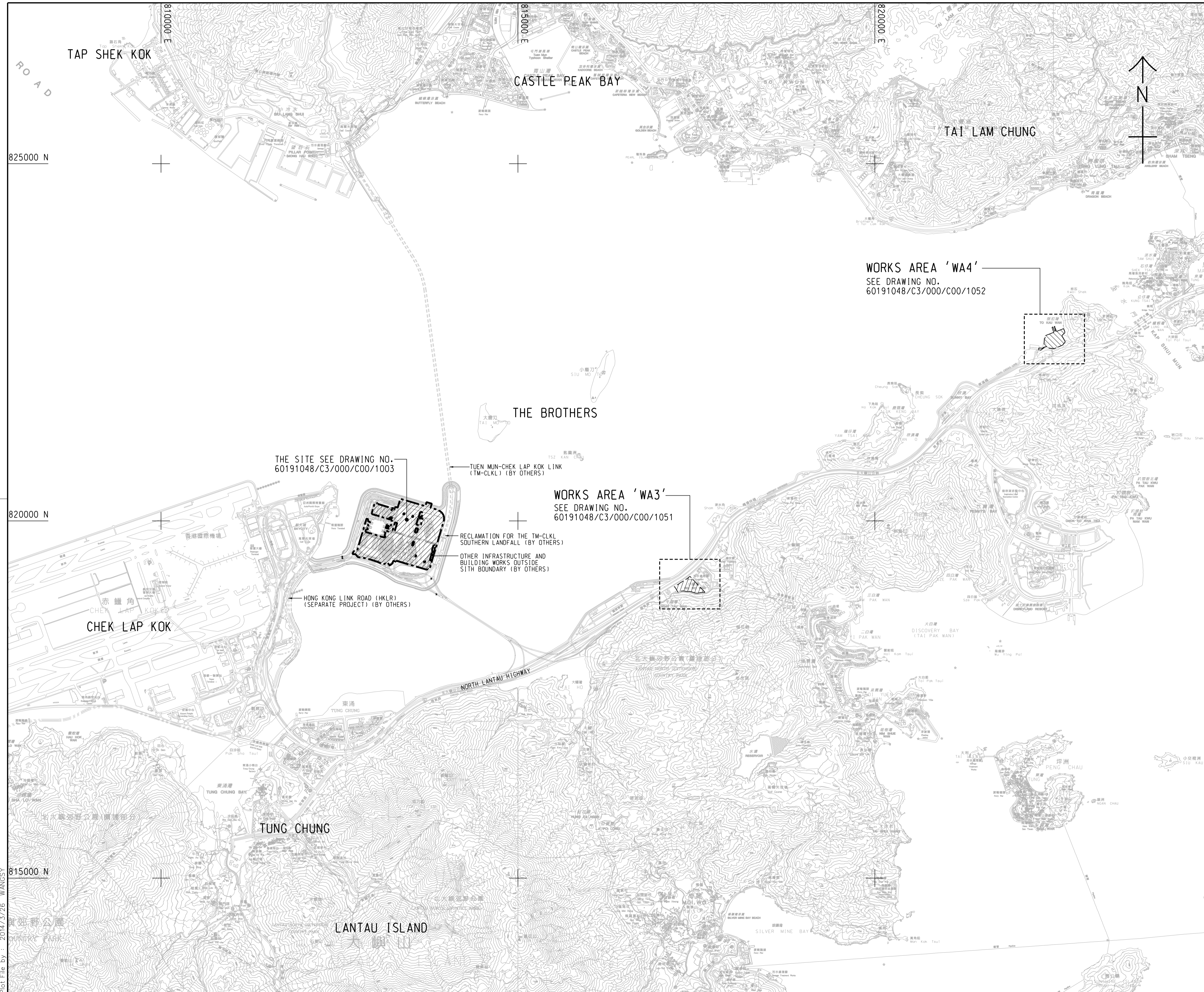
Email : mcl@fugro.com

MaterialLab

Report No.: 0165/15/ED/0836

Appendix A

Location of Works Areas



- NOTES:**
1. COORDINATES ARE RELATED TO HONG KONG METRIC GRID (1980).
 2. DIMENSIONS ARE IN MILLIMETER AND CHAINAGE ARE IN METRES UNLESS OTHERWISE SHOWN.
 3. THIS DRAWING SHALL BE READ IN CONJUNCTION WITH DRAWING NOS. 60191048/C3/000/C00/1051 TO 1053.

LEGEND:

- SITE BOUNDARY
- ▨ WORKS AREA

THE SITE SEE DRAWING NO. 60191048/C3/000/C00/1003

TUEN MUN-CHEK LAP KOK LINK (TM-CKLK) (BY OTHERS)

WORKS AREA 'WA3'
SEE DRAWING NO. 60191048/C3/000/C00/1051

RECLAMATION FOR THE TM-CKLK SOUTHERN LANDFALL (BY OTHERS)
OTHER INFRASTRUCTURE AND BUILDING WORKS OUTSIDE SITE BOUNDARY (BY OTHERS)

HONG KONG LINK ROAD (HKLR) (SEPARATE PROJECT) (BY OTHERS)

WORKS AREA 'WA4'
SEE DRAWING NO. 60191048/C3/000/C00/1052

| | | | | |
|------------------|------------------|---------|---------|---------|
| - TENDER DRAWING | | BSC | SCI | MAR. 14 |
| REV. 修改 | DESCRIPTION 內容摘要 | D.C. 查核 | C.C. 日期 | DATE 日期 |

路政署 HIGHWAYS DEPARTMENT
港珠澳大橋香港工程管理處
Hong Kong - Zhuhai - Macao Bridge Hong Kong Project Management Office

HONG KONG-ZHUHAI-MACAO BRIDGE
HONG KONG BOUNDARY CROSSING FACILITIES
- VEHICLE CLEARANCE PLAZAS AND
ANCILLARY BUILDINGS AND FACILITIES

SITE LOCATION PLAN

AECOM + +
Rogers Stirk Harbour + Partners
BURO HAPPOLD ATKINS ADI + +
Aedas

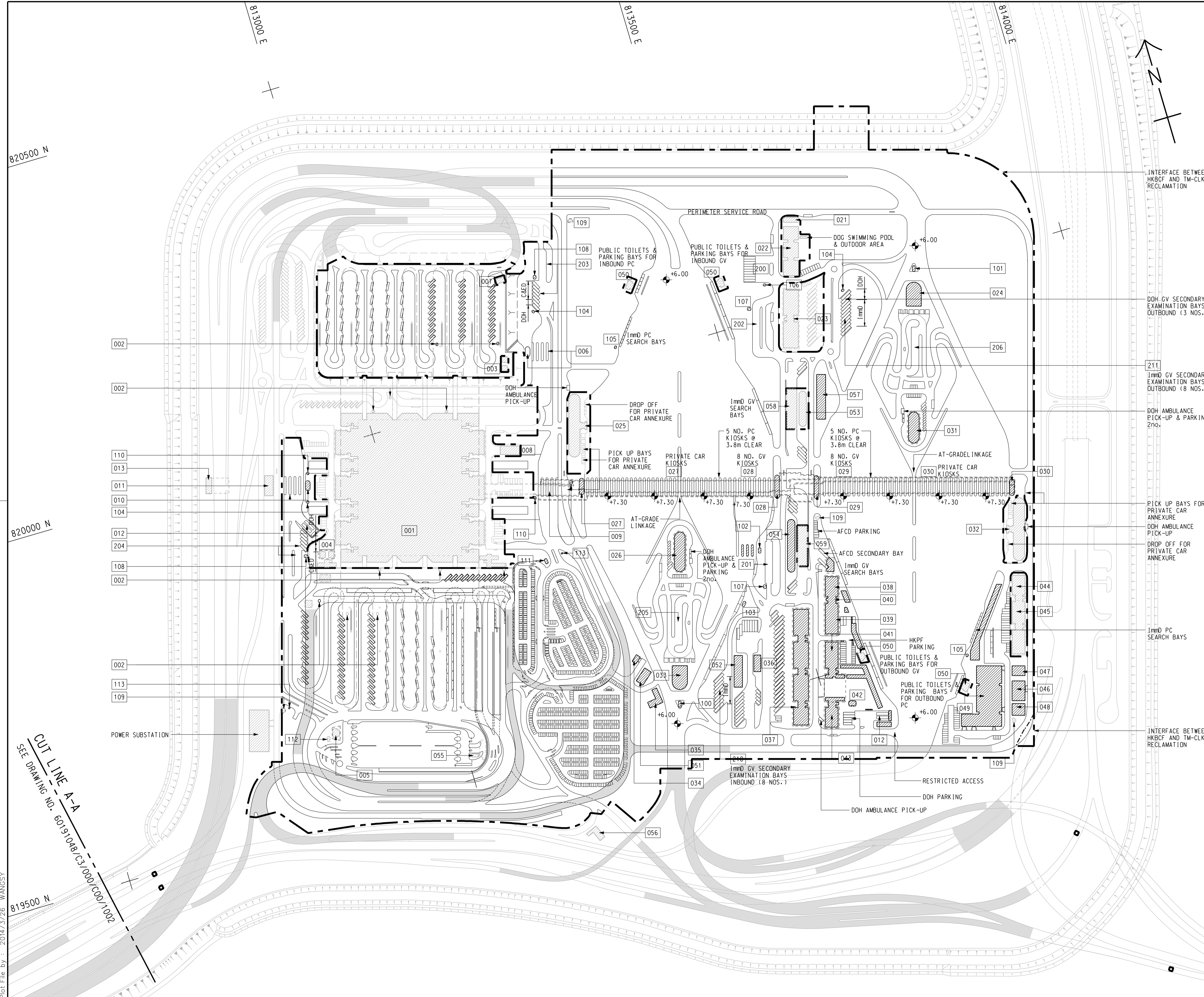
DRG. NO. 60191048/C3/000/C00/1000
圖紙編號

| | | |
|----------------|-------------------|----------------------|
| DESIGNED BY 設計 | CONTRACT NO. 合約編號 | P. Dir. APPROVED 批准人 |
| BWCW | HY/2013/03 | TKH |

| | |
|-------------|-----------|
| DRAWN BY 繪圖 | STATUS 階段 |
| WSY | |

SCALE 比例 A1 1 : 25000
DIMENSIONS ARE IN 尺寸單位 METRES
© COPYRIGHT RESERVED 版權所有

Plot File by : 2014/3/26 WANGSY



NOTE:

1. THIS DRAWING TO BE READ IN CONJUNCTION WITH DRAWING NO. 60191048/C3/000/C00/1003.

LEGEND:

- SITE BOUNDARY
- VIADUCT
- BUILDING/FACILITIES

INTERFACE BETWEEN HKBCF AND TM-CLKL RECLAMATION

DOH GV SECONDARY EXAMINATION BAYS OUTBOUND (3 NOS.)

1mm0 GV SECONDARY EXAMINATION BAYS OUTBOUND (8 NOS.)

DOH AMBULANCE PICK-UP & PARKING 2no.

PICK UP BAYS FOR PRIVATE CAR ANNEXURE

DOH AMBULANCE PICK-UP

1mm0 PC SEARCH BAYS

INTERFACE BETWEEN HKBCF AND TM-CLKL RECLAMATION

| | | | |
|------------------|------------------|----------|---------|
| - TENDER DRAWING | | BWCW SCI | MAR. 14 |
| REV. 修改 | DESCRIPTION 內容摘要 | D.C. 校核 | DATE 日期 |

路政署 HIGHWAYS DEPARTMENT
 港珠澳大橋香港工程管理處
 Hong Kong - Zhuhai - Macao Bridge Hong Kong Project Management Office

HONG KONG-ZHUHAI-MACAO BRIDGE
 HONG KONG BOUNDARY CROSSING FACILITIES
 - VEHICLE CLEARANCE PLAZAS AND
 ANCILLARY BUILDINGS AND FACILITIES

Figure 1-1
Current Layout Plan

SHEET 1 OF 2

AECOM **Aedas**
 Rogers Stirk Harbour + Partners
 BURO HAPPOLD ATKINS ADI

DRG. NO. 60191048/C3/000/C00/1001
 圖紙編號

| | | |
|----------------|-------------------|----------------------|
| DESIGNED BY 設計 | CONTRACT NO. 合約編號 | P. DIR. APPROVED 批准人 |
| BWCW | HY/2013/03 | TKH |

| | |
|-------------|-----------|
| DRAWN BY 繪圖 | STATUS 階段 |
| WSY | 初步 |

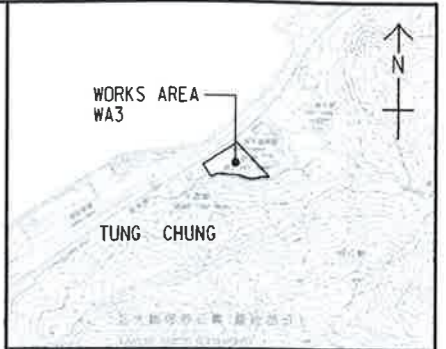
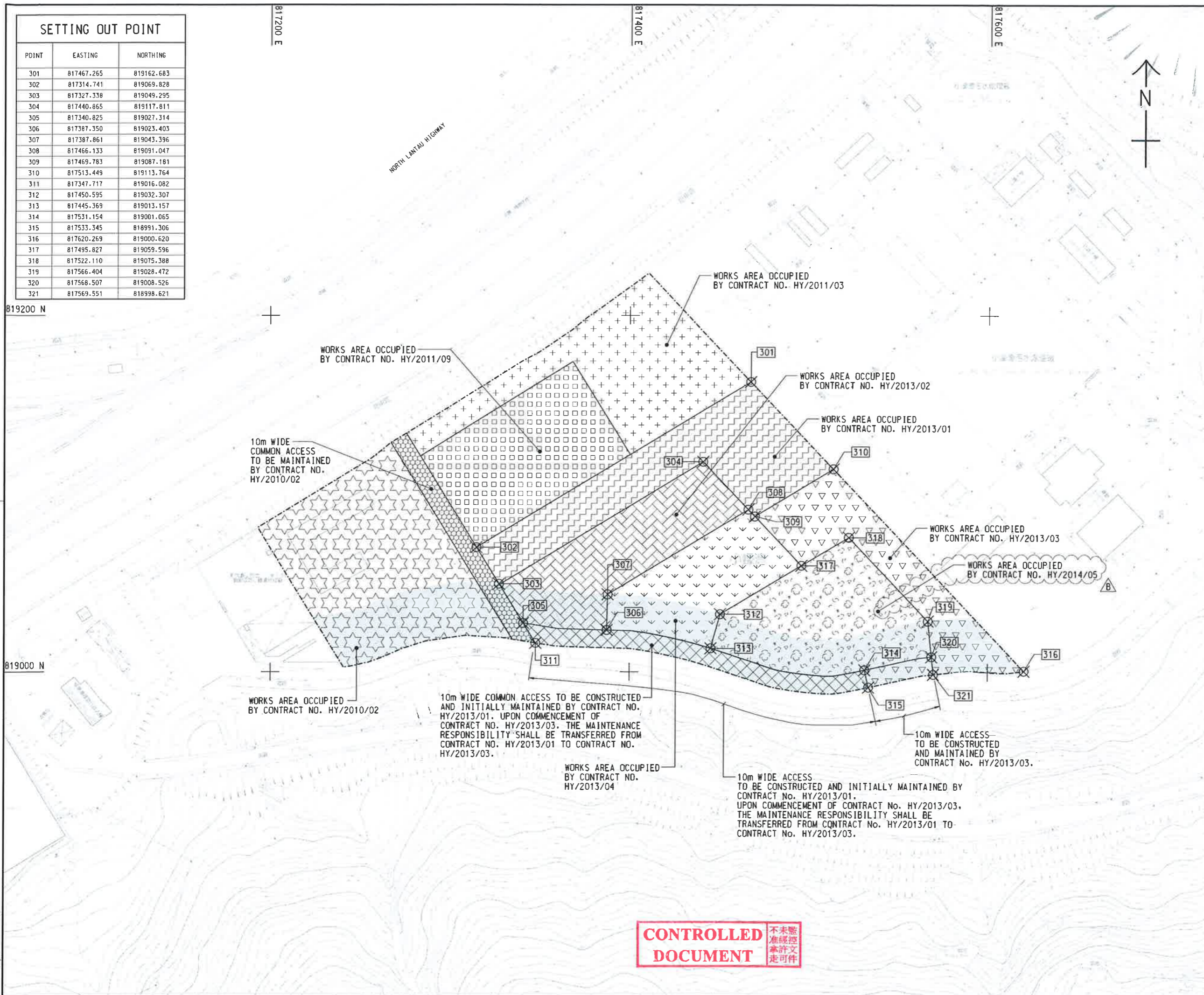
SCALE 比例 A1 1 : 2500
 DIMENSIONS ARE IN 尺寸單位 METRES 公尺

© COPYRIGHT RESERVED
 版權所有

CUT LINE A-A
 SEE DRAWING NO. 60191048/C3/000/C00/1002

Plot File by : 2014/3/26 WANGSY

| SETTING OUT POINT | | |
|-------------------|------------|------------|
| POINT | EASTING | NORTHING |
| 301 | 817467.265 | 819162.683 |
| 302 | 817314.741 | 819069.828 |
| 303 | 817327.338 | 819049.295 |
| 304 | 817440.865 | 819117.811 |
| 305 | 817340.825 | 819027.314 |
| 306 | 817387.350 | 819023.403 |
| 307 | 817387.861 | 819043.396 |
| 308 | 817466.133 | 819091.047 |
| 309 | 817469.783 | 819087.181 |
| 310 | 817513.449 | 819113.764 |
| 311 | 817347.717 | 819016.082 |
| 312 | 817450.595 | 819032.307 |
| 313 | 817445.369 | 819013.157 |
| 314 | 817531.154 | 819001.065 |
| 315 | 817533.345 | 818991.306 |
| 316 | 817620.269 | 819000.620 |
| 317 | 817495.827 | 819059.596 |
| 318 | 817522.110 | 819075.388 |
| 319 | 817566.404 | 819028.472 |
| 320 | 817568.507 | 819008.526 |
| 321 | 817569.551 | 818998.621 |



NOTES:

- COORDINATES ARE RELATED TO HONG KONG METRIC GRID (1980).
- DIMENSIONS ARE IN MILLIMETER AND CHAINAGE ARE IN METRES UNLESS OTHERWISE SHOWN.

LEGEND:

| | |
|--|---|
| | WORKS AREA BOUNDARY |
| | PORTION 3.1 |
| | PORTION 3.2 |
| | PORTION 3.3 |
| | PORTION 3.4 |
| | PORTION 3.5 |
| | PORTION 3.6 |
| | PORTION 3.7 |
| | PORTION 3.8 |
| | PORTION 3.9 |
| | PORTION 3.10 |
| | NON-BUILDING AREA 8200m ² (WHOLE) |

FOR CONSTRUCTION

| | | | |
|----------|-----------------------|----------|---------|
| C | WORKING DRAWING | BWCW SCI | MAY. 15 |
| B | TENDER ADDENDUM NO. 2 | BWCW SCI | MAY. 14 |
| A | TENDER ADDENDUM NO. 1 | BWCW SCI | APR. 14 |
| - | TENDER DRAWING | BWCW SCI | MAR. 14 |
| REV. NO. | DESCRIPTION | REV. BY | DATE |

HONG KONG HIGHWAYS DEPARTMENT
 香港路政處
 香港、珠海、澳門大橋工程管理局
 Hong Kong - Zhuhai - Macao Bridge Hong Kong Project Management Office

HONG KONG-ZHUHAI-MACAO BRIDGE
 HONG KONG BOUNDARY CROSSING FACILITIES
 VEHICLE CLEARANCE PLAZAS AND
 ANCILLARY BUILDINGS AND FACILITIES

WORKS AREA WA3

AECOM +
Aedas +
 Rogers Stirk Harbour + Partners
 BURO HAPPOLD ATKINS ADI +

DRG. NO. 圖紙編號: 60191048/C3/000/C00/1051C

| | | |
|-----------------------|-------------------------------|---------------------------|
| DESIGNED BY 設計: BWCW | CONTRACT NO. 合約編號: HY/2013/03 | A. BYR. APPROVED 核准人: TKH |
| DRAWN BY 繪圖: WSY | STATUS 狀態: WJ | WORKING DRAWING |
| SCALE 比例: A1 1 : 1000 | © COPYRIGHT RESERVED 版權所有 | |

CONTROLLED DOCUMENT 不准未經核准修改

Plot File by: 2014/5/5 WANGSY

SETTING OUT POINT

| POINT | EASTING | NORTHING |
|-------|------------|------------|
| 401 | 822488.151 | 822632.315 |
| 402 | 822640.593 | 822689.415 |
| 403 | 822515.608 | 822559.848 |
| 404 | 822610.940 | 822599.642 |
| 405 | 822629.428 | 822607.359 |
| 406 | 822526.988 | 822529.813 |
| 407 | 822618.348 | 822567.950 |
| 408 | 822542.232 | 822489.581 |
| 409 | 822584.983 | 822507.426 |
| 410 | 822606.866 | 822516.561 |
| 411 | 822560.278 | 822441.956 |
| 412 | 822602.949 | 822460.010 |
| 413 | 822621.914 | 822467.959 |
| 414 | 822624.130 | 822470.998 |
| 415 | 822651.725 | 822508.856 |
| 416 | 822644.758 | 822521.192 |



LOCATION PLAN
SCALE 1 : 25000

- NOTES:
- COORDINATES ARE RELATED TO HONG KONG METRIC GRID (1980).
 - DIMENSIONS ARE IN MILLIMETER AND CHAINAGE ARE IN METRES UNLESS OTHERWISE SHOWN.

LEGEND:

| | |
|--|---------------------|
| | WORKS AREA BOUNDARY |
| | PORTION 4.1 |
| | PORTION 4.2 |
| | PORTION 4.3 |
| | PORTION 4.4 |
| | PORTION 4.5 |
| | PORTION 4.6 |
| | PORTION 4.7 |
| | PORTION 4.8 |
| | PORTION 4.9 |

CONTROLLED DOCUMENT

FOR CONSTRUCTION

| | | | |
|---|-----------------------|----------|--------|
| C | WORKING DRAWING | BWCW SCI | MAY.15 |
| B | TENDER ADDENDUM NO. 2 | BWCW SCI | MAY.14 |
| A | TENDER ADDENDUM NO. 1 | BWCW SCI | APR.14 |
| - | TENDER DRAWING | BWCW SCI | MAR.14 |

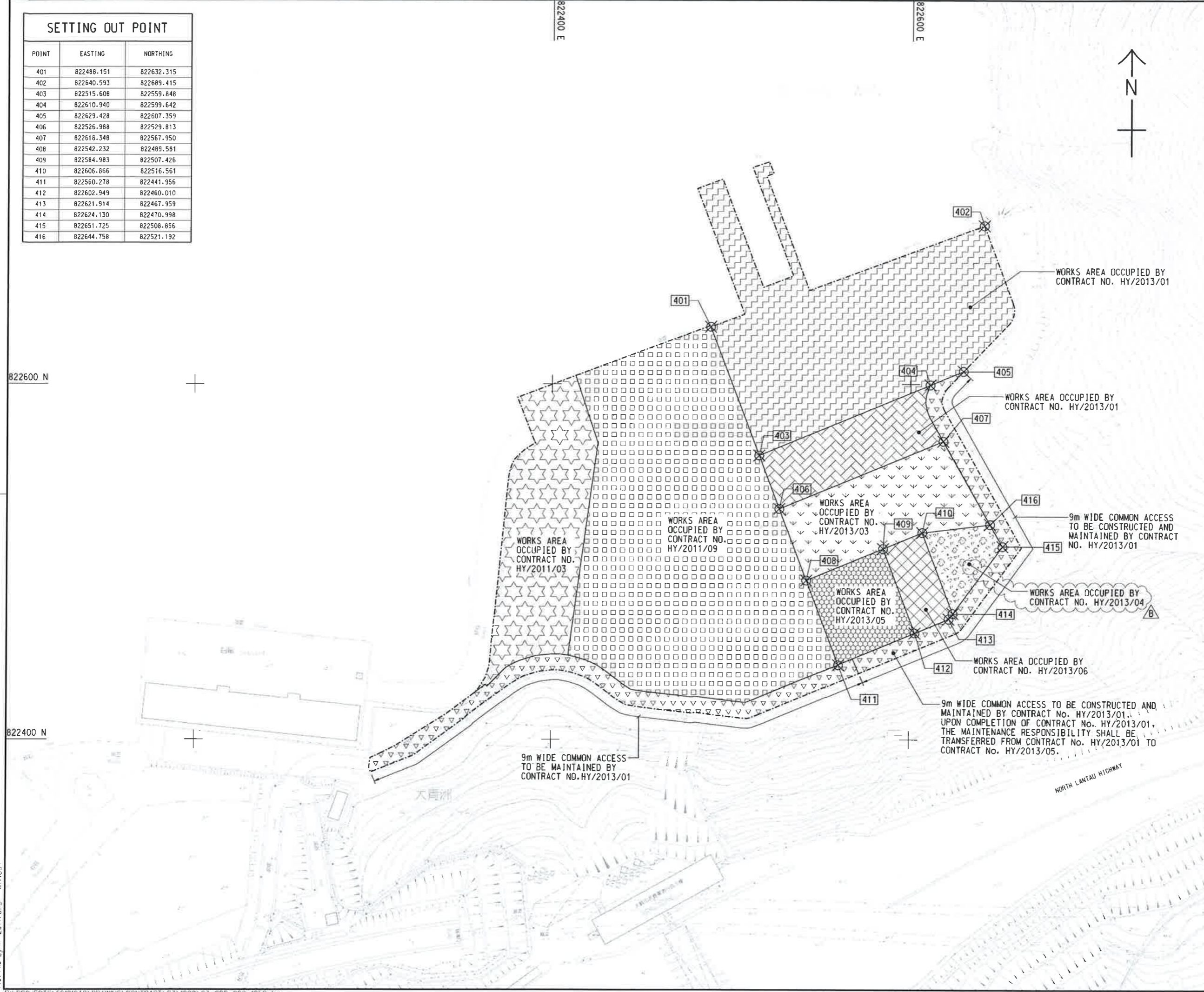
HONG KONG-HIGHWAYS DEPARTMENT
 香港路政處
 HONG KONG-ZHUHAI-MACAO BRIDGE
 HONG KONG BOUNDARY CROSSING FACILITIES
 - VEHICLE CLEARANCE PLAZAS AND ANCILLARY BUILDINGS AND FACILITIES

WORKS AREA WA4

AECOM Aedas
 Rogers Stirk Harbour + Partners
 BURO HAPPOLD ATKINS ADI

DRGNO. 圖紙編號: 60191048/C3/000/C00/1052C

| | | | | | |
|--------------------|-------------|----------------------------|-----------------|--------------------|-----|
| DESIGNED BY 設計人 | BWCW | CONTRACT NO. 合約編號 | HY/2013/03 | APPROVED BY 校核人 | TKH |
| DRAWN BY 繪圖人 | WSY | STATUS 圖則 | WORKING DRAWING | | |
| SCALE 比例 | A1 1 : 1000 | COPYRIGHT RESERVED 版權所有 | | | |



Plot File by: 2014/5/5 WANGSY