

**Environmental Complaint Form**

<b>RECEIPT OF COMPLAINT</b>		<b>Ref: ENPO-C0134</b>
Date:	9 March 2018	
Time:	N/A	
Via:	EPD	
<b>COMPLAINANT</b>		
Name:	Not specified in complaint	Address: N/A
Contact no.:	N/A	
<b>DETAILS OF COMPLAINT</b>		
Date:	Not specified in complaint	
Time:	After 19:00	
Parameter:	Air Quality and Water Quality	Other (specify): N/A
Description:	The complaint was about the regular absence of site staff at the wheel wash facility to clean the wheels of vehicles leaving HZMB BCF Island site after 19:00. A video of the area concerned was provided by the complainant.	
<b>INVESTIGATION RESULT &amp; RESPONSE</b>		
IEC and ER notified on: 10 March 2018		
ET inspected site on: 14 March 2018		
Result of investigation:		
<p>The relevant mitigation measures for washing of site vehicles for the HZMB BCF Island site, as required in the EMIS and statutory requirements in the Air Pollution Control (Construction Dust) Regulations and other applicable environmental legislation, are consolidated as follows:</p> <ul style="list-style-type: none"> <li>• Immediately before leaving a construction site, every vehicle shall be washed to remove any dusty materials from its body and wheels and to ensure that no earth, mud or debris is deposited by them on roads.</li> <li>• Vehicle washing facilities with high pressure water jet should be provided at every discernible or designated vehicle exit point. The area where vehicle washing takes place and the road section between the washing facilities and the exit point should be paved with concrete, bituminous materials or hardcores.</li> </ul> <p>The wheel washing facility at the HY/2013/04 site boundary entrance/exit for vehicles leaving HY/2013/04 site in the direction of HZMB BCF Island site exit was implemented by the Contractor on 27 January 2018. A plan of the wheel washing facility is presented in <b>Attachment 1</b>. As informed by the Contractor of HY/2013/04, wheel washing facility was staffed by site workers with water hose between 07:00 and 19:00 only on each working day.</p> <p>During ET's regular weekly site inspection on 14 March 2018 (between 14:00 and 15:00), the haul road in the vicinity of the wheel wash facility was observed to be watered and no fugitive dust generation from HY/2013/04 works was observed. The additional signage mentioned above was also provided. Photos of implementation of these measures at the wheel wash facility are presented in <b>Attachment 2</b>. There were no observations referring to air quality mitigation measures associated with watering of site areas.</p>		
<b>RECOMMENDATIONS / MITIGATION MEASURES / ACTIONS</b>		
<p>The Contractor was reminded to properly implement all necessary air and water quality mitigation measures identified in the EM&amp;A Manual. All site vehicles leaving HY/2013/04 site should be properly washed at the wheel washing facilities at HY/2013/04 site exit to prevent muddy trail on the</p>		

access roads and public roads thereafter.

The Contractor has agreed to provide 24 hours site workers with manual water spray at the wheel washing facility on each working day to ensure all vehicles have been washed before leaving the site.

Photos showing implementation of the wheel washing facility at HY/2013/04 site exit on 14 March 2018 are presented in **Attachment 2**.

Prepared by: Gary Chow

Title: Environmental Team Leader

Signature:



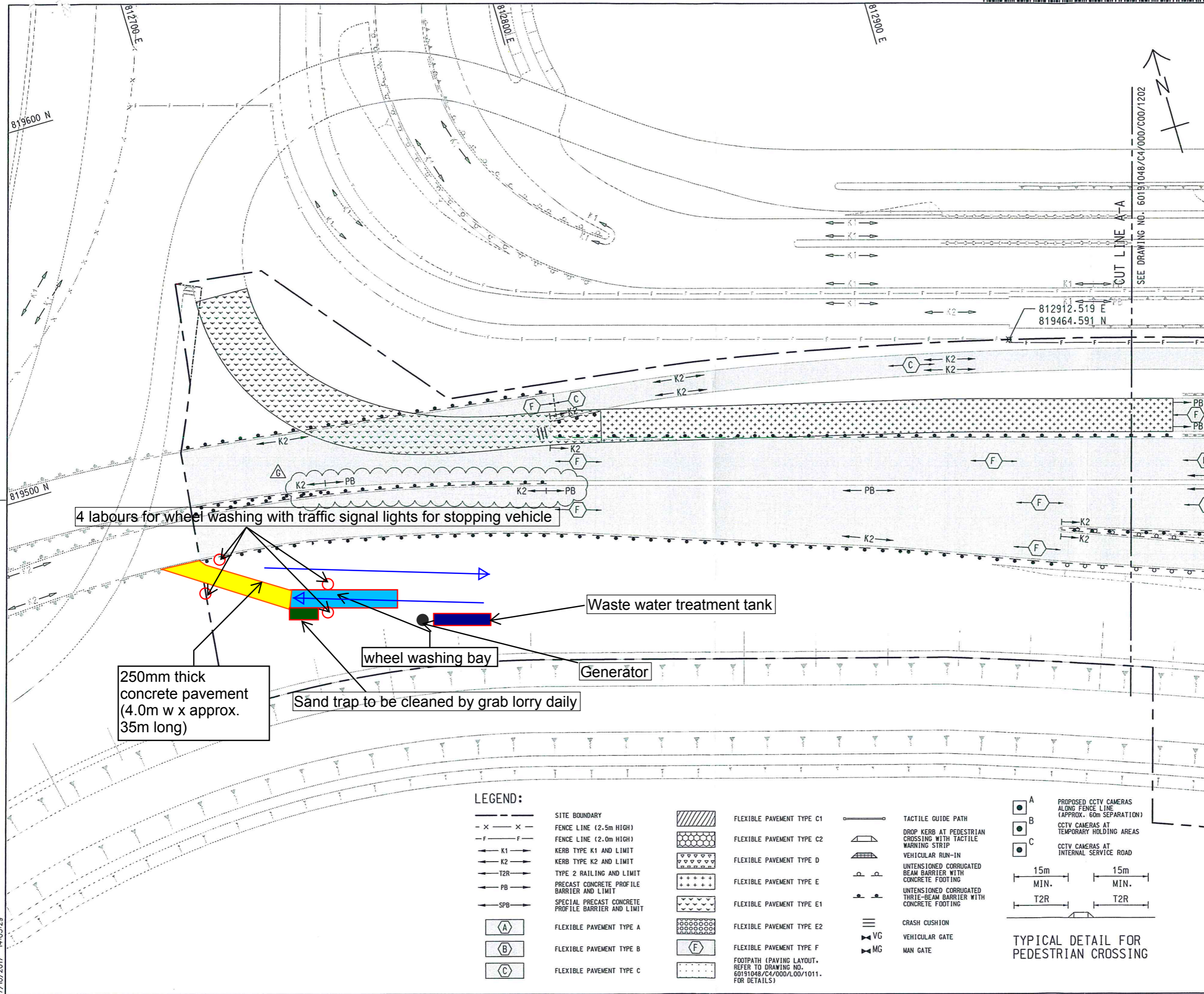
Date: 23 March 2018

#### **ATTACHMENTS**

1. Wheel washing facility layout plan.
2. Photos of follow-up measures implemented at the wheel wash facility on 14 March 2018.

## **Attachment 1**





**KEY PLAN**  
SCALE 1 : 12500

- NOTES:**
- ALL DIMENSIONS ARE IN MILLIMETRES UNLESS OTHERWISE STATED.
  - THIS DRAWING TO BE READ IN CONJUNCTION WITH DRAWING NOS. 60191048/C4/000/C00/1204.
  - FOR ROADWORKS DETAILS, REFER TO DRAWING NOS. 60191048/C4/000/C00/1221 TO 1228.
  - FOR PRECAST CONCRETE KERB, REFER TO HYD STANDARD DRAWINGS H1118 TO H1119 FOR DETAILS.
  - FOR STANDARD PRECAST CONCRETE PROFILE BARRIER, REFER TO HYD STANDARD DRAWINGS H2104 FOR DETAILS.
  - FOR CONCRETE PROFILE BARRIER - TERMINAL SECTION, REFER TO HYD STANDARD DRAWINGS H2103 FOR DETAILS.
  - FOR UNTENSIONED CORRUGATED BEAM BARRIERS, REFER TO HYD STANDARD DRAWINGS H2117C, H2119D, H2120A, H2121, H2122, H2123, H2124A, H2125B, H2126, H2127A, H2128A AND H2129C FOR DETAILS.
  - FOR THRIE-BEAM AND TRANSITION DETAILS TO W-BEAM, REFER TO HYD STANDARD DRAWINGS H2190 TO H2197 FOR DETAILS.
  - FOR TYPE 2 RAILING, REFER TO HYD STANDARD DRAWINGS H2130F TO H2132F FOR DETAILS.
  - FOR RUN-IN, REFER TO HYD STANDARD DRAWINGS H1113B TO H1114A FOR DETAILS.
  - FOR PRECAST CONCRETE BLOCK PAVING, REFER TO HYD STANDARD DRAWINGS H1103F, H5102A AND H5114B FOR DETAILS.
  - FOR CRASH CUSHION, REFER TO HYD STANDARD DRAWING H2265A FOR DETAILS.
  - FOR TACTILE TILES/SLABS/BLOCKS, REFER TO HYD STANDARD DRAWING H5118C FOR DETAILS.
  - FOR DROP KERB AT PEDESTRIAN CROSSING WITH TACTILE WARNING STRIP, REFER TO HYD STANDARD DRAWING H1117A FOR DETAILS.
  - FOR EMERGENCY CRASH GATE, REFER TO HYD STANDARD DRAWING H2108B FOR DETAILS.
  - THE EXTENT OF THE PAVEMENT RE-SURFACING AND ROAD WORKS AS SHOWN ON THE PLAN IS INDICATIVE ONLY. EXACT EXTENT SHALL BE AGREED WITH THE ENGINEER ON SITE.
  - ALL KERBS SHOULD BE K1 UNLESS OTHERWISE STATED.
  - FOR SPECIAL CONCRETE PROFILE BARRIER, REFER TO HYD STANDARD H2102A.

REV.	DATE	DESCRIPTION	DRAWN	PRE.	CHK.
G	07/10/17	CHANGE AS SHOWN	CKL	DKFK	PYFL
F	18/09/17	CHANGE AS SHOWN	CKL	DKFK	PYFL
E	16/08/17	CHANGE AS SHOWN	CKL	DKFK	PYFL
D	14/07/17	CHANGE AS SHOWN	CKL	DKFK	PYFL
C	03/02/17	CHANGE AS SHOWN	CKL	GTCC	PYFL
B	18/10/16	CHANGE AS SHOWN	CKL	DKFK	SC
A	20/05/16	CHANGE AS SHOWN	CKL	DKFK	SC
-	10/07/15	REVISION OF STANDARD DRAWINGS INCORPORATED	LCTK	BYHT	JCYJ

DRAWING REFERENCE TO LATEST VERSION:  
60191048/C4/000/C00/1201

路政署  
HIGHWAYS DEPARTMENT  
港珠澳大桥香港工程管理处  
Hong Kong - Zhuhai - Macao Bridge Hong Kong Project Management Office

**AECOM** +  
Rogers Stirk Harbour + Partners  
BURO HAPPOLD ATKINS ADI +  
**Aedas**

HY/2013/04  
HONG KONG-ZHUHAI-MACAO BRIDGE  
HONG KONG BOUNDARY CROSSING FACILITIES  
- INFRASTRUCTURE WORKS STAGE II  
(SOUTHERN PORTION)

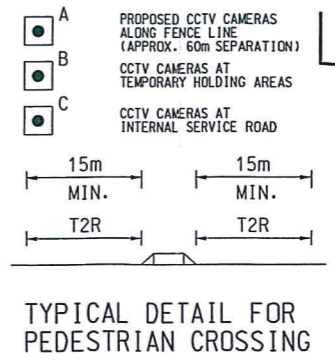
TITLE  
**LAYOUT OF WHEEL WASHING BAY AND CONCRETE PAVEMENT**

SKETCH NO. 60191048/C4/SK0211  
REV. G

SCALE 1:500 (A1)  
1:1000 (A3)  
© COPYRIGHT RESERVED  
版權所有

**LEGEND:**

--- X --- X ---	SITE BOUNDARY	[Pattern]	FLEXIBLE PAVEMENT TYPE C1	[Symbol]	TACTILE GUIDE PATH
- x - x -	FENCE LINE (2.5m HIGH)	[Pattern]	FLEXIBLE PAVEMENT TYPE C2	[Symbol]	DROP KERB AT PEDESTRIAN CROSSING WITH TACTILE WARNING STRIP
- f - f -	FENCE LINE (2.0m HIGH)	[Pattern]	FLEXIBLE PAVEMENT TYPE D	[Symbol]	VEHICULAR RUN-IN
- K1 -	KERB TYPE K1 AND LIMIT	[Pattern]	FLEXIBLE PAVEMENT TYPE E	[Symbol]	UNTENSIONED CORRUGATED BEAM BARRIER WITH CONCRETE FOOTING
- K2 -	KERB TYPE K2 AND LIMIT	[Pattern]	FLEXIBLE PAVEMENT TYPE E1	[Symbol]	UNTENSIONED CORRUGATED THRIE-BEAM BARRIER WITH CONCRETE FOOTING
- T2R -	TYPE 2 RAILING AND LIMIT	[Pattern]	FLEXIBLE PAVEMENT TYPE E2	[Symbol]	CRASH CUSHION
- PB -	PRECAST CONCRETE PROFILE BARRIER AND LIMIT	[Pattern]	FLEXIBLE PAVEMENT TYPE F	[Symbol]	VEHICULAR GATE
- SPB -	SPECIAL PRECAST CONCRETE PROFILE BARRIER AND LIMIT	[Pattern]	FOOTPATH (PAVING LAYOUT, REFER TO DRAWING NO. 60191048/C4/000/L00/1011. FOR DETAILS)	[Symbol]	MAN GATE
[A]	FLEXIBLE PAVEMENT TYPE A				
[B]	FLEXIBLE PAVEMENT TYPE B				
[C]	FLEXIBLE PAVEMENT TYPE C				



7/10/2017 14:05:29



## **Attachment 2**

**Photo record of the wheel wash facility on 14 March 2018**



1. Signage provided at wheel wash facility at HY/2013/04 site exit, instructing drivers of all vehicles leaving the site after 21:00 to use the water hose provided to wash their vehicles.

2. Water spray implemented at HY/2013/04 site boundary for vehicles leaving HY/2013/04 site towards BCF Island site exit. No specific observation referring to air or water quality mitigation measures associated with the wheel wash facility was observed.