



Activity ID	Activity Name	Original Duration	Start	Finish	September 2017		October 2017				November 2017				December 2017				January 2018	
					17	24	01	08	15	22	29	05	12	19	26	03	10	17	24	31
C8 3 - Month Rolling Programme, Stated 01 November 2017																				
PROGRAMME SUMMARY																				
Fire Service Inspection Schedule Summary																				
GENERAL/PRELIMINARIES																				
DESIGN AND ENGINEERING																				
PROCUREMENT, MANUFACTURING & DELIVERIES																				
CONSTRUCTION																				
Building 021 - C&ED Dangerous Goods Store																				
Raft																				
Structure																				
ABWF/E&M																				
Internal Finishes																				
Degree 1																				
Degree 2																				
RAB-21-0450	021 - Louver & Door Frame	11	23-Aug-17 A	16-Sep-17 A																
RAB-21-0410	021 - Power On	0	01-Nov-17																	
Degree 3																				
RAB-21-0330	021 - MEP Final Fix	24	17-Jul-17 A	04-Nov-17																
RAB-21-0430	021 - Door Panel & Ironmongery	6	16-Sep-17 A	27-Sep-17 A																
RAB-21-0460	021 - Floor Painting	18	09-Oct-17 A	18-Oct-17 A																
RAB-21-0340	021 - Snagging and Remedials (Bldg. Internal)	18	23-Oct-17 A	21-Nov-17																
RAB-21-0520	021 - MEP Balance of Works	32	06-Nov-17	12-Dec-17																
RAB-21-0345	KD4C - Projected achievement of Stage 4C of the Works	0		21-Nov-17																
RAB-KD4C10	021 - End Users and MoM handover inspection	0	22-Nov-17																	
Roof Finishes																				
RAB-21-0270	021 - Install Railing 50m	6	01-Nov-17	07-Nov-17																
External Finishes																				
Facade																				
RAB-21-0190	021 - Install External Louvers /Windows/Doors	18	23-Aug-17 A	16-Sep-17 A																
RAB-21-0320	021 - Snagging and Remedials (External)	12	30-Nov-17	13-Dec-17																
At Grade																				
RAB-21-380	021 - Prepare Sub Grade	5	01-Nov-17	06-Nov-17																
RAB-21-370	021 - Laying Geo Textile	5	07-Nov-17	11-Nov-17																
RAB-21-390	021 - Lay Granular Sub-Base	5	13-Nov-17	17-Nov-17																
RAB-21-400	021 - Laying Course	5	18-Nov-17	23-Nov-17																
RAB-21-360	021 - Concrete Block Paving	5	24-Nov-17	29-Nov-17																
Utilities and Drainage																				
Testing & Commissioning																				
RAB-TC21-1000	021 - T&C (HVAC, FS, P&D, OTHERS)	12	02-Nov-17	15-Nov-17																
Statutory Submissions & Approvals (Day 670 Completion)																				
Dangerous Goods Licence																				
RAB-21-0350	021 - DG Licence Iprocessing & Inspection	14	14-Sep-17 A	11-Nov-17																
RAB-21-0360	021 - Issue DG Licence	0		11-Nov-17																
Fire Services Department (VAC)																				
RAB-FSD-820	021 - Submit Form 501 to FSD	0	16-Nov-17																	
RAB-FSD-300	021 - FSD Inspection Period	14	30-Nov-17	15-Dec-17																
RAB-FSD-310	021 - Fire Certificate Obtained (Form 172) Handover	0		15-Dec-17																
Engineer (AECOM)																				
RAB-21-2190	021 - Submit As-Built Drawings to the Engineer	0		21-Nov-17																

█ Remaining Level of Effort
 █ Actual Work
 █ Critical Re...
 █ Actual Level of Effort
 █ Remaining Work
 △ Finish Con...

Date	Revision	Checked	Approved
01-Nov-17	3-Month Rolling Programme Stated 01 N...	SGJ	

Activity ID	Activity Name	Original Duration	Start	Finish	September 2017		October 2017				November 2017				December 2017				January 2018			
					17	24	01	08	15	22	29	05	12	19	26	03	10	17	24	31	07	
RAB-21-2200	021 - Engineer Inspection Period	14	23-Dec-17	11-Jan-18																		
Building 022 - Customs Detective Dog Base Building																						
Excavation																						
Raft Foundations																						
Structure																						
Walls & Columns																						
Roof Slab																						
North Structure																						
Cure and Strip																						
Middle Structure																						
Cure and Strip																						
South Structure																						
Cure and Strip																						
ABWF/E&M																						
Internal Finishes																						
North																						
Degree 1																						
RAB-22-8665	022 - Screeding	17	08-May-17 A	18-Sep-17 A																		
Degree 2																						
RAB-22-0885	022 - Door/Window Frame & Louvers	16	07-Aug-17 A	15-Sep-17 A																		
RAB-22-0910	022 - Power On	0	01-Nov-17																			
Degree 3																						
RAB-22-0865	022 - Ceiling Frame & Board Panel	40	10-Jul-17 A	11-Nov-17																		
RAB-22-8395	022 - Wall Tiling & Painting	34	17-Jul-17 A	11-Nov-17																		
RAB-22-8275	022 - MEP Final Fix	18	25-Jul-17 A	11-Nov-17																		
RAB-22-8365	022 - Floor Finish Other Than Early Handovr Rooms	24	01-Aug-17 A	17-Nov-17																		
RAB-22-8245	022 - Glazing	12	15-Sep-17 A	17-Nov-17																		
RAB-22-8265	022 - Door Panel & Ironmongery	12	04-Nov-17	17-Nov-17																		
RAB-22-8295	022 - Snagging and Remedials (Bldg. Internal)	11	08-Nov-17	20-Nov-17																		
RAB-22-0870	022 - MEP Balance of Works	43	13-Nov-17	04-Jan-18																		
RAB-22-0980	022 - End Users and MOM Handover Inspection	0	20-Nov-17																			
RAB-22-0950	022 - ABWF and MEP works to Degree 3 (KD5C)	0		20-Nov-17																		
External Finishes																						
Facade																						
RAB-22-0470	022 - External Painting, Tiling & Cladding	28	15-Sep-17 A	17-Nov-17																		
RAB-22-0710	Snag Listing - Bldg. External & External Works	24	13-Dec-17	12-Jan-18																		
At Grade																						
RAB-22-2100	022 - Prepare Sub Grade	18	29-Nov-17	19-Dec-17																		
RAB-22-2110	022 - Laying Geo Textile	18	06-Dec-17	28-Dec-17																		
RAB-22-2170	022 - Landscaping for Outdoor Excise Lawn	24	11-Dec-17	10-Jan-18																		
RAB-22-2120	022 - Lay Granular Sub-Base	18	13-Dec-17	05-Jan-18																		
RAB-22-2130	022 - Laying Course	18	20-Dec-17	12-Jan-18																		
RAB-22-2140	022 - Concrete Block Paving	18	29-Dec-17	19-Jan-18																		
Roof Finishes - North																						
RAB-22-0540	022 - Install Cat Ladder and Roof Hatch	6	17-Jul-17 A	07-Nov-17																		
RAB-22-0530	022 - Install Railing	6	01-Nov-17	07-Nov-17																		
RAB-22-0720	022 - Make good external surfaces	12	18-Nov-17	01-Dec-17																		
Specialist Installations																						
RAB-22-0990	022 - Kennels Installation (42No)	24	02-Sep-17 A	11-Nov-17																		
Window Wall																						
RAB-22-7030	022 - Install Primary Steelwork for Window Wall	12	30-Oct-17 A	18-Nov-17																		
RAB-22-7040	022 - Install Secondary Steelwork for Window Wall	12	06-Nov-17	18-Nov-17																		
RAB-22-7050	022 - Glazing to Window Wall	10	20-Nov-17	30-Nov-17																		
Dog Swimming Pool																						
RAB-22-0480	022 - Waterproofing	4	09-Oct-17 A	14-Oct-17 A																		

█ Remaining Level of Effort
█ Actual Work
█ Critical Re...
█ Actual Level of Effort
█ Remaining Work
◊ Finish Con...

Date	Revision	Checked	Approved
01-Nov-17	3-Month Rolling Programme Stated 01 N...	SGJ	

Activity ID	Activity Name	Original Duration	Start	Finish	September 2017		October 2017				November 2017				December 2017				January 2018				
					17	24	01	08	15	22	29	05	12	19	26	03	10	17	24	31	07	14	
RAB-22-0600	022 - Tiling to Dog Swimming Pool	6	01-Nov-17	07-Nov-17																			
RAB-22-0490	022 - Backfill to ground level at Dog Swimming Pool	1	01-Nov-17	01-Nov-17																			
RAB-22-0640	022 - Plumbing and filtration systems	18	08-Nov-17	28-Nov-17																			
RAB-22-0630	022 - Metalworks and Railings	4	29-Nov-17	02-Dec-17																			
RAB-22-0700	022 - Snagging and Remedials - Dog Pool	6	04-Dec-17	09-Dec-17																			
Utilities and Drainage																							
RAB-22-8095	022 - Construct Permanent Drainage and Manholes	45	09-May-17 A	14-Oct-17 A																			
RAB-22-8125	022 - Utilites and Common Telecom Ducting	8	03-Jun-17 A	16-Sep-17 A																			
RAB-22-8115	022 - Install Flushing Water Mains	8	18-Sep-17 A	11-Nov-17																			
RAB-22-8105	022 - Install Fresh Water Mains	8	18-Sep-17 A	11-Nov-17																			
RAB-22-8135	022 - Install FS Water main	8	18-Sep-17 A	11-Nov-17																			
Testing & Commissioning																							
RAB-TC22-1000	022 - T&C (HVAC, FS, P&D, OTHERS)	24	07-Nov-17	04-Dec-17																			
Statutory Submissions & Approvals (Day 670 Completion)																							
BBE0																							
RAB-BEE-120	022 - Registered Energy Assessor Inspection & Certification	6	17-Nov-17	23-Nov-17																			
RAB-BEE-130	022 - Submit REA Certification to EDMS	1	24-Nov-17																				
RAB-BEE-140	022 - EDMS Issue of Cert of Compliance Registration (COCR)	24	24-Nov-17	21-Dec-17																			
Water Supplies Department (WSD)																							
Commencement																							
Completion																							
RAB-WSD-804	022 - Submit WWO 46 Pt. IV	0	01-Nov-17																				
RAB-WSD-254	022 - WSD's Processing/Inspection/Meter Connection	24	01-Nov-17	28-Nov-17																			
RAB-WSD-264	022 - Permanent Water ON/WSD Issue WWO 46 Part V Cert & Wa	0		28-Nov-17																			
Fire Services Department (VAC)																							
RAB-FSD-860	022 - Submit Form 501	0	05-Dec-17																				
Fire Services Water (FS)																							
Commencement																							
Completion																							
RAB-FSD-895	022 - Submit WWO 46 Pt. IV, FS	0	01-Nov-17																				
RAB-FSD-984	022 - Submit WWO 46 Pt. V, FS	0	29-Nov-17																				
RAB-FSD-320	022 - Submit Form 501, FS	0	05-Dec-17																				
RAB-FSD-994	022 - Submit Form 314	0	05-Dec-17																				
RAB-FSD-330	022 - FSD Inspection Period, FS	14	19-Dec-17	06-Jan-18																			
Engineer (AECOM)																							
RAB-22-2220	022 - Submit Building 022 As Built Drawings to Engineer	0		01-Nov-17																			
Building 023 - C&ED Outbound Cargo Examination Building and Examination Platform																							
Excavation																							
Raft Foundations - Inspection Platform																							
Raft Foundations - Main Building																							
Structure																							
Ground Floor																							
Planters																							
RAB-23-6140	023 - Construct North Planter Box and Ramp	18	01-Sep-17 A	23-Sep-17 A																			
RAB-23-6230	023 - Construct South Planter Box and Ramp	18	01-Nov-17	21-Nov-17																			
Supporting Walls and Columns to +12.85mPD																							
First Floor																							
Cure and Strip																							
Supporting Walls and Columns to +17.1mPD																							
Roof																							
Cure and Strip																							
Supporting Walls and Columns to +19.1mPD																							
Lift Doghouse																							
Cure and Strip																							
ABWF/E&M																							

█ Remaining Level of Effort
█ Actual Work
█ Critical Re...
█ Actual Level of Effort
█ Remaining Work
◆ Finish Con...

Date	Revision	Checked	Approved
01-Nov-17	3-Month Rolling Programme Stated 01 N...	SGJ	

Activity ID	Activity Name	Original Duration	Start	Finish	September 2017		October 2017				November 2017				December 2017				January 2018				
					17	24	01	08	15	22	29	05	12	19	26	03	10	17	24	31	07		
Internal Finishes																							
Ground Floor																							
Degree 1																							
Degree 2																							
RAB-23-5860	023 - MEP 2nd Fix, G/F	37	16-May-17 A	27-Sep-17 A	[Gantt bar: 16-May-17 A to 27-Sep-17 A]																		
RAB-23-5610	023 - Frame for Wall Panel & Cladding + Louver, G/F	10	14-Aug-17 A	04-Nov-17	[Gantt bar: 14-Aug-17 A to 04-Nov-17]																		
RAB-23-5670	023 - Access to C3, C6 & C7 For Equip. Installation***, G/F	0	01-Nov-17		[Milestone: 01-Nov-17]																		
RAB-23-5790	023 - ABWF and MEP works to Degree 2 for others (KD3B) G/F	0		07-Nov-17	[Milestone: 07-Nov-17]																		
Degree 3																							
RAB-23-5930	023 - Wall Finish - Paint & Tile, G/F	50	19-Jun-17 A	11-Nov-17	[Gantt bar: 19-Jun-17 A to 11-Nov-17]																		
RAB-23-6220	023 - Floor Finish Other Than Carpet, G/F	45	24-Jun-17 A	11-Nov-17	[Gantt bar: 24-Jun-17 A to 11-Nov-17]																		
RAB-23-5760	023 - Ceiling Frame, G/F	18	17-Jul-17 A	10-Nov-17	[Gantt bar: 17-Jul-17 A to 10-Nov-17]																		
RAB-23-6380	023 - MEP Final Fix, G/F	18	04-Aug-17 A	13-Nov-17	[Gantt bar: 04-Aug-17 A to 13-Nov-17]																		
RAB-23-5660	023 - Door Frame/Panel & Ironmongery, G/F	18	21-Aug-17 A	15-Nov-17	[Gantt bar: 21-Aug-17 A to 15-Nov-17]																		
RAB-23-6080	023 - Glazing, G/F	10	11-Sep-17 A	10-Nov-17	[Gantt bar: 11-Sep-17 A to 10-Nov-17]																		
RAB-23-6410	023 - Ceiling Plaster Board, G/F	18	08-Nov-17	28-Nov-17	[Gantt bar: 08-Nov-17 to 28-Nov-17]																		
RAB-23-6180	023 - Floor Carpet Finish, G/F	15	17-Nov-17	04-Dec-17	[Gantt bar: 17-Nov-17 to 04-Dec-17]																		
RAB-23-6190	023 - Access to End Users, KD3C' - C3, C6 & C7	0	22-Nov-17		[Milestone: 22-Nov-17]																		
First Floor																							
Degree 1																							
RAB-23-8065	023 - Plastering & Undercoat, 1/F	55	12-Apr-17 A	09-Nov-17	[Gantt bar: 12-Apr-17 A to 09-Nov-17]																		
Degree 2																							
RAB-23-8125	023 - MEP 2nd Fix, 1/F	32	24-May-17 A	04-Nov-17	[Gantt bar: 24-May-17 A to 04-Nov-17]																		
RAB-23-8085	023 - Frame for Wall Panel & Cladding + Louver, 1/F	6	03-Nov-17	09-Nov-17	[Gantt bar: 03-Nov-17 to 09-Nov-17]																		
RAB-23-8235	023 - Power On	0	04-Nov-17		[Milestone: 04-Nov-17]																		
RAB-23-8115	023 - Access for C3 for Equip. Instln***, 1/F, KD3D Target to Achieve	0	10-Nov-17		[Milestone: 10-Nov-17]																		
Degree 3																							
RAB-23-8175	023 - Wall Finish - Paint & Tile, 1/F	55	07-Aug-17 A	17-Nov-17	[Gantt bar: 07-Aug-17 A to 17-Nov-17]																		
RAB-23-8105	023 - Ceiling Frame, 1/F	18	14-Aug-17 A	16-Nov-17	[Gantt bar: 14-Aug-17 A to 16-Nov-17]																		
RAB-23-8165	023 - MEP Final Fix, 1/F	19	14-Aug-17 A	14-Nov-17	[Gantt bar: 14-Aug-17 A to 14-Nov-17]																		
RAB-23-8205	023 - Floor Finish Other Than Carpet, 1/F	45	22-Aug-17 A	21-Nov-17	[Gantt bar: 22-Aug-17 A to 21-Nov-17]																		
RAB-23-8145	023 - Glazing, 1/F	10	11-Sep-17 A	13-Nov-17	[Gantt bar: 11-Sep-17 A to 13-Nov-17]																		
RAB-23-8185	023 - Ceiling Plaster Board, 1/F	18	11-Nov-17	01-Dec-17	[Gantt bar: 11-Nov-17 to 01-Dec-17]																		
RAB-23-8195	023 - Floor Carpet Finish, 1/F	12	11-Nov-17	24-Nov-17	[Gantt bar: 11-Nov-17 to 24-Nov-17]																		
RAB-23-8155	023 - Door Panel/Ironmongery & Glass Baluster, 1/F	18	15-Nov-17	05-Dec-17	[Gantt bar: 15-Nov-17 to 05-Dec-17]																		
RAB-23-8265	023 - MEP Balance of Works	47	15-Nov-17	11-Jan-18	[Gantt bar: 15-Nov-17 to 11-Jan-18]																		
RAB-23-5970	023 - ABWF and MEP works to Degree 3 (KD3E)	0		30-Nov-17	[Milestone: 30-Nov-17]																		
RAB-23-2290	023 - Snag Listing & Remedial Works - Building Internal	18	02-Dec-17	22-Dec-17	[Gantt bar: 02-Dec-17 to 22-Dec-17]																		
RAB-23-6040	023 - End Users and MOM Handover Inspection	0	05-Dec-17		[Milestone: 05-Dec-17]																		
RAB-23-8225	023 - Handover Rooms Ready to End Users***, KD3C Target to Ach	0	05-Dec-17		[Milestone: 05-Dec-17]																		
RAB-23-8255	023 - ABWF and MEP works to Degree 3 - Remaining Area- 1/F	0	05-Dec-17		[Milestone: 05-Dec-17]																		
Roof Level Dog House																							
RAB-23-6280	023 - ABWF and MEP works to Degree 2 R/F	24	21-Aug-17 A	04-Nov-17	[Gantt bar: 21-Aug-17 A to 04-Nov-17]																		
RAB-23-6340	023 - ABWF and MEP works to Degree 3 R/F	24	04-Sep-17 A	11-Nov-17	[Gantt bar: 04-Sep-17 A to 11-Nov-17]																		
External Finishes																							
Facade																							
RAB-23-5650	023 - External Painting	24	12-Aug-17 A	04-Nov-17	[Gantt bar: 12-Aug-17 A to 04-Nov-17]																		
RAB-23-5990	023 - Dismantle Scaffolding	8	18-Sep-17 A	14-Oct-17 A	[Gantt bar: 18-Sep-17 A to 14-Oct-17 A]																		
At Grade																							
RAB-23-5740	023 - Prepare Sub Grade	18	06-Nov-17	25-Nov-17	[Gantt bar: 06-Nov-17 to 25-Nov-17]																		
RAB-23-5820	023 - Laying Geo Textile	18	13-Nov-17	02-Dec-17	[Gantt bar: 13-Nov-17 to 02-Dec-17]																		
RAB-23-5910	023 - Lay Granular Sub-Base	18	20-Nov-17	09-Dec-17	[Gantt bar: 20-Nov-17 to 09-Dec-17]																		
RAB-23-5940	023 - Laying Course	18	27-Nov-17	16-Dec-17	[Gantt bar: 27-Nov-17 to 16-Dec-17]																		

■ Remaining Level of Effort
■ Actual Work
■ Critical Re...
■ Actual Level of Effort
■ Remaining Work
△ Finish Con...

Date	Revision	Checked	Approved
01-Nov-17	3-Month Rolling Programme Stated 01 N...	SGJ	

Activity ID	Activity Name	Original Duration	Start	Finish	September 2017		October 2017				November 2017				December 2017				January 2018		
					17	24	01	08	15	22	29	05	12	19	26	03	10	17	24	31	07
RAB-23-6050	023 - Concrete Block Paving	18	04-Dec-17	23-Dec-17																	
RAB-23-6160	023 - Make good external surfaces	12	20-Dec-17	05-Jan-18																	
Curtain Wall																					
East																					
RAB-23-6810	023 - Install Primary Steelwork for Curtain Wall (Bracket Support) - I	6	12-Oct-17 A	07-Nov-17																	
RAB-23-6820	023 - Install Secondary Steelwork for Curtain Wall (Mullion, etc) - E	6	08-Nov-17	14-Nov-17																	
RAB-23-6830	023 - Glazing to Window Wall - E	6	15-Nov-17	21-Nov-17																	
West																					
RAB-23-6840	023 - Install Primary Steelwork for Window Wall (Bracket Support) - W	6	12-Oct-17 A	07-Nov-17																	
RAB-23-6850	023 - Install Secondary Steelwork for Window Wall (Mullion, etc) - W	6	08-Nov-17	14-Nov-17																	
RAB-23-6860	023 - Glazing to Window Wall - W	6	22-Nov-17	28-Nov-17																	
Roof Finishes																					
RAB-23-5620	023 - Top Screed	8	26-Aug-17 A	16-Sep-17 A																	
RAB-23-5640	023 - Roof Tiling	12	28-Aug-17 A	04-Nov-17																	
RAB-23-5920	023 - Install Railing	6	02-Oct-17 A	11-Nov-17																	
Green Roof																					
RAB-23-5720	023 - Install green Roof Irrigation Systems	24	25-Sep-17 A	18-Nov-17																	
RAB-23-5900	023 - Complete Green Roofing Works	36	13-Nov-17	23-Dec-17*																	
Specialist Installations																					
RAB-23-6270	023 - Install Lift (1 nos)	36	01-Aug-17 A	02-Oct-17 A																	
RAB-23-7310	023 - Install Glazed Entrance Canopy (Sky Light)	24	19-Sep-17 A	14-Oct-17 A																	
RAB-23-6010	023 - Installation of Roller Shutter Header Boxes (x 3)	18	16-Oct-17 A	11-Nov-17																	
RAB-23-6250	023 - Installation of Roller Shutter Curtain (x3)	18	06-Nov-17	25-Nov-17																	
PV Installation																					
RAB-23-6350	023 - Install Supporting Frame and PV panel	18	23-Oct-17 A	18-Nov-17																	
RAB-23-6360	023 - Cable containment and grid cable wiring	15	13-Nov-17	29-Nov-17																	
RAB-23-6390	023 - Sub-array junction box installation & Connection	6	30-Nov-17	06-Dec-17																	
RAB-23-6400	023 - DC cable wiring from PV panel to EL room	6	07-Dec-17	13-Dec-17																	
Steel Canopy																					
RAB-23-6240	023 - Install Secondary Steelwork	32	18-Jul-17 A	16-Sep-17 A																	
RAB-23-6290	023 - Install Metal Cladding Panels	21	18-Sep-17 A	07-Oct-17 A																	
RAB-23-6310	023 - Install Misc Metalworks	22	01-Nov-17	25-Nov-17																	
Utilities and Drainage																					
RAB-23-7975	023 - Construct Permanent Drainage, Manholes & Draw Pits	71	19-Jun-17 A	21-Nov-17																	
RAB-23-7985	023 - Utilities and Common Telecom Ducting	18	26-Jun-17 A	18-Nov-17																	
RAB-23-7995	023 - Install Flushing Water Mains	18	18-Sep-17 A	21-Nov-17																	
RAB-23-8005	023 - Install Fresh Water Mains	18	18-Sep-17 A	21-Nov-17																	
RAB-23-8015	023 - Install FS Water Mains	18	18-Sep-17 A	21-Nov-17																	
Testing & Commissioning																					
RAB-TC23-1000	023 - T&C (HVAC, FS, P&D, OTHERS)	26	01-Nov-17	30-Nov-17																	
RAB-TC23-1010	023 - T&C (Lift)	21	01-Nov-17	24-Nov-17																	
RAB-TC23-1015	023 - PV Self-test with Engineer	12	14-Dec-17	29-Dec-17																	
RAB-TC23-1020	023 - PV On-Grid inspection with CLP	12	30-Dec-17	13-Jan-18																	
Statutory Submissions & Approvals (Day 610 Completion)																					
BEE																					
RAB-BEE-150	023 - Registered Energy Assessor Inspection & Certification	6	17-Nov-17	23-Nov-17																	
RAB-BEE-160	023 - Submit REA Certification to EDMS	0	24-Nov-17																		
RAB-BEE-170	023 - EDMS Issue of Cert of Compliance Registration (COCR)	24	24-Nov-17	21-Dec-17																	
EMSD - Building 023 Lift Inspection																					
RAB-FSD-180	023 - Submit EMSD Form 5 (Completion of Lift Installation)	0		01-Nov-17																	
RAB-FSD-190	023 - EMSD Lift Inspection	24	01-Nov-17	28-Nov-17																	
RAB-FSD-106	023 - EMSD Lift Certificate Issued - Building 023	0		28-Nov-17																	
Water Supplies Department (WSD)																					
Commencement																					

█ Remaining Level of Effort
█ Actual Work
█ Critical Re...
█ Actual Level of Effort
█ Remaining Work
◊ Finish Con...

Date	Revision	Checked	Approved
01-Nov-17	3-Month Rolling Programme Stated 01 N...	SGJ	

Activity ID	Activity Name	Original Duration	Start	Finish	September 2017		October 2017				November 2017				December 2017				January 2018			
					17	24	01	08	15	22	29	05	12	19	26	03	10	17	24	31	07	14
Completion																						
RAB-WSD-774	023 - Submit WWO 46 Pt. IV for Building 023	0		17-Nov-17																		
RAB-WSD-107	023 - WSD Inspection/Meter Connection	24	17-Nov-17	14-Dec-17																		
RAB-WSD-109	023 - Permanent Water ON/WSD Issue WWO 46 Part V - Water Ct	0		14-Dec-17																		
Fire Services Department (VAC)																						
RAB-FSD-900	023 - Submit Form 501	0	01-Nov-17																			
Fire Services Department (FSD)																						
Commencement																						
Completion																						
RAB-FSD-108	023 - Submit WWO 46 Pt. IV for Building 023	0	01-Nov-17																			
RAB-FSD-112	023 - Issue WWO 46 Part V	0		17-Nov-17																		
RAB-FSD-122	023 - Submit Form 501	0	01-Dec-17																			
RAB-FSD-138	023 - Submit Form 314	0	01-Dec-17																			
RAB-FSD-110	023 - FSD Inspection Period For Building 023	14	15-Dec-17	03-Jan-18																		
Engineer (AECOM)																						
RAB-23-2250	023 - Submit Building 023 As Built Drawings to Engineer	0		08-Dec-17																		
Building 025 - Inbound Private Car Annexure																						
Excavation																						
Raft Foundations																						
Structure																						
Walls & Columns																						
Roof Slab																						
Cure and Strip																						
ABWF/E&M INTERNAL FINISHES																						
INTERNAL FINISHING WORKS																						
Degree 1																						
Degree 2																						
RAB-25-7430	025 - MEP 2nd Fix	45	15-Apr-17 A	16-Sep-17 A																		
RAB-25-7570	025 - Raised Floor Pedestal	24	31-Jul-17 A	23-Sep-17 A																		
RAB-25-7450	025 - Frame for Doors/Windows, Wall Panel & Cladding	12	30-Aug-17 A	11-Nov-17																		
RAB-25-7350	025 - Power On Available	0	01-Nov-17																			
RAB-25-7560	025 - Access C3, C6 & C7 Equip. Installation***	0	01-Nov-17																			
Degree 3																						
RAB-25-7470	025 - Ceiling Painting & Ceiling Sub-Frame	35	29-Apr-17 A	04-Nov-17																		
RAB-25-7620	025 - Ceiling Panel	24	20-May-17 A	11-Nov-17																		
RAB-25-7600	025 - Wall Paint Finish Coat	28	06-Jun-17 A	04-Nov-17																		
RAB-25-7610	025 - Wall Tiling	24	15-Jun-17 A	02-Oct-17 A																		
RAB-25-7480	025 - Floor Tiling	35	19-Jun-17 A	02-Oct-17 A																		
RAB-25-7460	025 - MEP Final Fix	56	08-Aug-17 A	18-Nov-17																		
RAB-25-7440	025 - Door Frame/Wall Panel	12	10-Aug-17 A	17-Nov-17																		
RAB-25-7580	025 - Floor Painting	12	19-Aug-17 A	23-Nov-17																		
RAB-25-7590	025 - Floor Carpet	6	11-Sep-17 A	15-Nov-17																		
RAB-25-7510	025 - Plaster Board	35	14-Sep-17 A	22-Sep-17 A																		
RAB-25-7520	025 - Glazing	12	09-Oct-17 A	18-Nov-17																		
RAB-25-7370	025 - Snagging and Remedials	18	13-Nov-17	02-Dec-17																		
RAB-25-7375	KD6C - Projected achievement of Stage 6C of the Works	0		15-Nov-17																		
RAB-25-7550	025 - MEP Balance of Works	73	20-Nov-17	15-Feb-18																		
RAB-KD6C10	025 - End Users and MoM handover inspection	0	24-Nov-17																			
RAB-25-7630	025 - Early Handover Rooms Ready to End Users***, Target to Achie	0	24-Nov-17																			
External Finishes																						
Facade																						
RAB-25-0360	025 - Install External Louvers /Windows/Doors	18	05-Aug-17 A	07-Nov-17																		
RAB-25-0580	025 - Make good external surfaces	18	08-Nov-17	28-Nov-17																		
At Grade																						

█ Remaining Level of Effort
█ Actual Work
█ Critical Re...
█ Actual Level of Effort
█ Remaining Work
◊ Finish Con...

Date	Revision	Checked	Approved
01-Nov-17	3-Month Rolling Programme Stated 01 N...	SGJ	

Activity ID	Activity Name	Original Duration	Start	Finish	September 2017		October 2017				November 2017				December 2017				January 2018		
					17	24	01	08	15	22	29	05	12	19	26	03	10	17	24	31	07
RAB-25-6400	025 - Prepare Sub Grade	24	22-Nov-17	19-Dec-17																	
RAB-25-6390	025 - Laying Geo Textile	24	06-Dec-17	05-Jan-18																	
RAB-25-6410	025 - Lay Granular Sub-Base	24	20-Dec-17	19-Jan-18																	
Roof Finishes																					
RAB-25-0540	025 - Install Cat Ladders and Roof Hatch	6	07-Aug-17 A	07-Nov-17																	
RAB-25-0550	025 - Install Railing (222m)	12	08-Nov-17	21-Nov-17																	
Green Roof																					
RAB-25-0700	025 - Install Green Roof Irrigation Systems	24	18-Sep-17 A	18-Nov-17																	
RAB-25-0710	025 - Complete Green Roof Works	36	20-Nov-17	03-Jan-18																	
Specialist Installations																					
RAB-25-620	025 - Construct Health Department Screening Station x 1	24	12-Oct-17 A	18-Nov-17																	
RAB-25-610	025 - Construct Immigration Counters x 3	24	23-Oct-17 A	25-Nov-17																	
Glazed Canopy																					
RAB-25-0520	025 - Install Glazed Panels	12	01-Nov-17	14-Nov-17																	
IMMD Kiosk																					
RAB-25-0380	025 - Internal ABWF and MEP of IMMD Kiosk	24	22-Aug-17 A	08-Nov-17																	
RAB-25-0350	025 - External Finishes to IMMD Kiosk	24	16-Oct-17 A	11-Nov-17																	
RAB-25-0430	025 - Erect Kiosk Canopy @ +10.17mPD	24	06-Nov-17	02-Dec-17																	
Utilities and Drainage																					
RAB-25-7250	025 - Construct Permanent Drainage, Manholes & Draw Pits	42	12-Dec-16 A	07-Nov-17																	
RAB-25-7270	025 - Install Flushing Water Mains	12	18-Sep-17 A	21-Nov-17																	
RAB-25-7280	025 - Install Fresh Water Mains	12	18-Sep-17 A	21-Nov-17																	
RAB-25-7290	025 - Install FS Water Main	12	18-Sep-17 A	21-Nov-17																	
Testing & Commissioning																					
RAB-TC25-1000	025 - T&C (HVAC, FS, P&D, OTHERS)	26	15-Nov-17	14-Dec-17																	
Statutory Submissions & Approvals (Day 670 Completion)																					
BBE0																					
RAB-BEE-180	025 - Registered Energy Assessor Inspection & Certification	6	17-Nov-17	23-Nov-17																	
RAB-BEE-190	025 - Submit REA Certification to EDMS	1	24-Nov-17																		
RAB-BEE-200	025 - EDMS Issue of Cert of Compliance Registration (COCR)	24	24-Nov-17	21-Dec-17																	
Water Supplies Department (WSD)																					
Commencement																					
Completion																					
RAB-WSD-744	025 - Submit WWO 46 Pt. IV	0	01-Dec-17																		
RAB-WSD-374	025 - WSD Inspection/Meter Connection	24	01-Dec-17	30-Dec-17																	
RAB-WSD-384	025 - WSD Issue Water Certificate WWO 46 Part V	0		30-Dec-17																	
Fire Services Department (VAC)																					
RAB-FSD-940	025 - Submit Form 501, VAC	0	15-Dec-17																		
Fire Service Water (FS)																					
Commencement																					
Completion																					
RAB-FSD-350	025 - Submit WWO 46 Pt. IV, FS	0	01-Dec-17																		
RAB-FSD-570	025 - Submit WWO 46 Pt. V, FS	0	09-Dec-17																		
RAB-FSD-730	025 - Submit Form 501, FS	0	15-Dec-17																		
RAB-FSD-790	025 - Submit Form 314, FS	0	15-Dec-17																		
Engineer (AECOM)																					
Building 032 - Outbound Private Car Annexure																					
Excavation																					
Raft Foundations																					
Structure																					
Walls & Columns																					
Roof Slab																					
Cure and Strip																					
ABWF/E&M																					
Internal Finishes																					

■ Remaining Level of Effort
■ Actual Work
■ Critical Re...
■ Actual Level of Effort
■ Remaining Work
■ Finish Con...

Date	Revision	Checked	Approved
01-Nov-17	3-Month Rolling Programme Stated 01 N...	SGJ	

Activity ID	Activity Name	Original Duration	Start	Finish	September 2017		October 2017				November 2017				December 2017				January 2018	
					17	24	01	08	15	22	29	05	12	19	26	03	10	17	24	31
Degree 1																				
RAB-32-0700	032 - Floor Screed	45	24-Apr-17 A	07-Oct-17 A																
RAB-32-0510	032 - MEP 1st Fix	45	27-Apr-17 A	23-Sep-17 A																
Degree 2																				
RAB-32-0560	032 - MEP 2nd Fix	48	08-May-17 A	09-Nov-17																
RAB-32-0760	032 - Door & Windor Frame + Louver	24	05-Aug-17 A	04-Nov-17																
RAB-32-0660	032 - Power On	0	09-Nov-17																	
Degree 3																				
RAB-32-0830	032 - Wall Painting	28	03-Jun-17 A	07-Nov-17																
RAB-32-0750	032 - Ceiling Frame & Ceiling Paint	40	22-Jul-17 A	23-Sep-17 A																
RAB-32-0745	032 - Raised Floor	7	29-Jul-17 A	07-Nov-17																
RAB-32-0880	032 - Wall Tiling	24	12-Aug-17 A	07-Oct-17 A																
RAB-32-0870	032 - Ceiling Panel	24	14-Aug-17 A	18-Nov-17																
RAB-32-0860	032 - Floor Painting & Remaining Floor Tiling	18	15-Aug-17 A	21-Nov-17																
RAB-32-0590	032 - MEP Final Fix	50	28-Aug-17 A	01-Dec-17																
RAB-32-0800	032 - Door Panel & Ironmongery	18	04-Sep-17 A	02-Dec-17																
RAB-32-0790	032 - Glazing	12	25-Sep-17 A	21-Nov-17																
RAB-32-0850	032 - Early Handover Rooms Ready to End Users***	0	01-Nov-17																	
RAB-32-0670	032 - End Users and MoM handover inspection	0	02-Dec-17																	
RAB-32-0680	32 - Snagging and Remedials	18	02-Dec-17	22-Dec-17																
RAB-32-0740	032 - MEP Balance of Work	54	02-Dec-17	06-Feb-18																
RAB-KD7C10	KD7C - Projected achievement of Stage 7C of the Works	0		02-Dec-17																
Roof Finishes																				
RAB-32-0540	032 - Install Cat Ladders and Roof Hatch	12	15-Jul-17 A	11-Nov-17																
RAB-32-0550	032 - Install Railing	10	01-Nov-17	11-Nov-17																
Green Roof																				
RAB-32-0620	032 - Install Green Roof Irrigation Systems	18	14-Oct-17 A	21-Nov-17																
RAB-32-0650	032 - Complete Green Roof Works	18	13-Nov-17	02-Dec-17																
External Finishes																				
Facade																				
RAB-32-0360	032 - Install External Louvers /Windows/Doors	18	12-Aug-17 A	04-Nov-17																
RAB-32-0570	032 - Dismantle Scaffolding	8	11-Sep-17 A	16-Sep-17 A																
RAB-32-0580	032 - Make good external surfaces	12	01-Nov-17	14-Nov-17																
At Grade																				
RAB-32-6460	032 - Prepare Sub Grade	24	01-Nov-17	28-Nov-17																
RAB-32-6450	032 - Laying Geo Textile	24	15-Nov-17	12-Dec-17																
RAB-32-6470	032 - Lay Granular Sub-Base	24	29-Nov-17	28-Dec-17																
RAB-32-6480	032 - Laying Course	24	13-Dec-17	12-Jan-18																
RAB-32-6440	032 - Concrete Block Paving	24	29-Dec-17	26-Jan-18																
Specialist Installations																				
RAB-32-630	032 - Construct Immigration Counters x 3	24	01-Nov-17	28-Nov-17																
RAB-32-640	032 - Construct Health Department Screening Station X 1	24	10-Nov-17	07-Dec-17																
IMMD Kiosk																				
RAB-32-0380	032 - Internal ABWF and MEP of IMMD Kiosk	24	23-Aug-17 A	11-Nov-17																
RAB-32-0350	032 - External Finishes to IMMD Kiosk	24	01-Nov-17	28-Nov-17																
RAB-32-0430	032 - Erect Kiosk Canopy @ +10.17mPD	24	29-Nov-17	28-Dec-17																
Glazed Canopy																				
RAB-32-0520	032 - Install Glazed Panels	12	29-Dec-17	12-Jan-18																
Utilities and Drainage																				
RAB-32-7290	032 - Construct Permanent Drainage and Manholes (Approx 150m)	60	01-Apr-17 A	02-Nov-17																
RAB-32-7300	032 - Utilites and Common Telecom Ducting	6	07-Aug-17 A	11-Nov-17																
RAB-32-7310	032 - Install Flushing Water Mains	12	25-Sep-17 A	28-Nov-17																
RAB-32-7320	032 - Install Fresh Water Mains	12	25-Sep-17 A	28-Nov-17																

■ Remaining Level of Effort
■ Actual Work
■ Critical Re...
■ Actual Level of Effort
■ Remaining Work
△ Finish Con...

Date	Revision	Checked	Approved
01-Nov-17	3-Month Rolling Programme Stated 01 N...	SGJ	

Activity ID	Activity Name	Original Duration	Start	Finish	September 2017		October 2017				November 2017				December 2017				January 2018		
					17	24	01	08	15	22	29	05	12	19	26	03	10	17	24	31	07
RAB-32-7330	032 - Install FS Water Main	12	25-Sep-17 A	28-Nov-17																	
Testing & Commissioning																					
RAB-TC32-1000	032 - T&C (HVAC, FS, P&D, OTHERS)	26	30-Nov-17	02-Jan-18																	
Statutory Submissions & Approvals (Day 670 Completion)																					
BBE0																					
RAB-BEE-210	032 - Registered Energy Assessor Inspection & Certification	6	23-Dec-17	02-Jan-18																	
Water Supplies Department (WSD)																					
Commencement																					
Completion																					
Fire Services Department (HVAC)																					
RAB-FSD-960	032 - Submit Form 314, HVAC	0	01-Nov-17																		
Fire Water Service (FS)																					
Commencement																					
Completion																					
RAB-FSD-380	032 - Submit WWO 46 Pt. IV, FS	0	05-Dec-17																		
RAB-FSD-610	032 - Submit WWO 46 Pt. V, FS	0	22-Dec-17																		
Engineer (AECOM)																					
RAB-32-7250	032 - Submit Building 032 As Built Drawings to Engineer	0		05-Dec-17																	
Building 044 - E&M Maintenance Building																					
Excavation																					
Raft																					
Structure																					
Walls & Columns																					
Ground to First Floor																					
First Floor																					
Cure and Strip																					
First Floor to Second Floor																					
Second Floor																					
Cure and Strip																					
Second Floor to Roof																					
Roof Level																					
Cure and Strip																					
ABWF/E&M																					
Ground Floor																					
Degree 1																					
Degree 2																					
RAB-44-9175	044 - MEP 2nd Fix - G/F	18	10-Jun-17 A	04-Nov-17																	
RAB-44-0760	044 - Door & Window Frame + Louver - G/F	12	04-Sep-17 A	07-Nov-17																	
Degree 3																					
RAB-44-9285	044 - Wall Finish, Paint & Tile - G/F	24	10-Jun-17 A	06-Nov-17																	
RAB-44-9255	044 - Ceiling Paint - G/F	8	12-Jun-17 A	08-Nov-17																	
RAB-44-9185	044 - MEP Final Fix - G/F	8	01-Sep-17 A	13-Nov-17																	
RAB-44-9265	044 - Floor Tile Finish - G/F	14	04-Sep-17 A	07-Nov-17																	
RAB-44-9235	044 - Ceiling Panel Frame - G/F	24	18-Sep-17 A	16-Nov-17																	
RAB-44-9245	044 - Ceiling Plaster Board Frame	6	03-Nov-17	09-Nov-17																	
RAB-44-9295	044 - Door Panel & Ironmongery - G/F	14	04-Nov-17	20-Nov-17																	
RAB-44-9355	044 - Floor Paint Finish - G/F	6	09-Nov-17	15-Nov-17																	
RAB-44-9395	044 - Ceiling Plaster Board	6	10-Nov-17	16-Nov-17																	
RAB-44-9345	044 - Ceiling Panel - G/F	12	13-Nov-17	25-Nov-17																	
RAB-44-9275	044 - Glazing - G/F	8	17-Nov-17	25-Nov-17																	
First Floor																					
Degree 1																					
RAB-44-9335	044 - Plastering & Undercoat - 1/F	12	12-Jun-17 A	16-Sep-17 A																	
Degree 2																					
RAB-44-9365	044 - MEP 2nd Fix - 1/F	24	04-Aug-17 A	18-Nov-17																	

█ Remaining Level of Effort
█ Actual Work
█ Critical Re...
█ Actual Level of Effort
█ Remaining Work
◊ Finish Con...

Date	Revision	Checked	Approved
01-Nov-17	3-Month Rolling Programme Stated 01 N...	SGJ	

Activity ID	Activity Name	Original Duration	Start	Finish	September 2017		October 2017				November 2017				December 2017				January 2018	
					17	24	01	08	15	22	29	05	12	19	26	03	10	17	24	31
RAB-44-9455	044 - Door & Windor Frame + Louver - 1/F	12	04-Sep-17 A	14-Nov-17																
Degree 3																				
RAB-44-9555	044 - Wall Finish, Paint & Tile - 1/F	28	11-Jul-17 A	11-Nov-17																
RAB-44-9465	044 - Ceiling Paint Finish - 1/F	8	14-Aug-17 A	11-Nov-17																
RAB-44-9565	044 - Floor Tile Finish - 1/F	14	04-Sep-17 A	18-Nov-17																
RAB-44-9375	044 - MEP Final Fix - 1/F	8	11-Sep-17 A	28-Nov-17																
RAB-44-9385	044 - Ceiling Panel Frame - 1/F	24	01-Nov-17	28-Nov-17																
RAB-44-9505	044 - Door Panel & Ironmongery - 1/F	14	10-Nov-17	25-Nov-17																
RAB-44-9475	044 - Floor Paint Finish - 1/F	6	13-Nov-17	18-Nov-17																
RAB-44-9695	044 - Ceiling Plaster Board Frame	6	13-Nov-17	18-Nov-17																
RAB-44-9705	044 - Ceiling Plaster Board	6	14-Nov-17	20-Nov-17																
RAB-44-9495	044 - Ceiling Panel - 1/F	12	20-Nov-17	02-Dec-17																
RAB-44-9485	044 - Glazing - 1/F	8	21-Nov-17	29-Nov-17																
Second Floor																				
Degree 1																				
RAB-44-9515	044 - MEP 1st Fix - 2/F	9	27-Jul-17 A	04-Nov-17																
Degree 2																				
RAB-44-9575	044 - MEP 2nd Fix - 2/F	18	02-Aug-17 A	20-Nov-17																
RAB-44-9665	044 - Door & Windor Frame + Louver - 2/F	12	25-Sep-17 A	20-Nov-17																
RAB-44-9605	044 - Power On - 2/F	0	21-Nov-17																	
RAB-44-0610	KD8B - Projected achievement of Stage 8B of the Works - 2/F	0		21-Nov-17																
Degree 3																				
RAB-44-9635	044 - Ceiling Paint Finish - 2/F	8	04-Sep-17 A	18-Nov-17																
RAB-44-9595	044 - Wall Finish, Paint & Tile - 2/F	8	11-Sep-17 A	15-Nov-17																
RAB-44-9725	044 - Ceiling Plaster Board Frame - 2/F	6	16-Nov-17	22-Nov-17																
RAB-44-9585	044 - MEP Final Fix - 2/F	16	20-Nov-17	07-Dec-17																
RAB-44-9715	044 - Door Panel & Ironmongery - 2/F	8	23-Nov-17	01-Dec-17																
RAB-44-9735	044 - Ceiling Plaster Board	6	23-Nov-17	29-Nov-17																
RAB-44-9675	044 - Glazing - 2/F	8	24-Nov-17	02-Dec-17																
RAB-44-9685	044 - Floor Tile Finish & Floor Finish to Early handover Rooms - 2/F	8	02-Dec-17	11-Dec-17																
RAB-44-9645	044 - Ceiling Panel Frame - 2/F	8	06-Dec-17	14-Dec-17																
RAB-44-9795	044 - MEP Balance of Works	35	08-Dec-17	20-Jan-18																
RAB-44-9745	044 - Ceiling Panel - 2/F	8	13-Dec-17	21-Dec-17																
RAB-44-9625	044 - Snagging and Remedials	12	15-Dec-17	30-Dec-17																
RAB-44-9655	044 - Floor Finish Other Than Early Handover at 1/F	6	18-Dec-17	23-Dec-17																
RAB-44-9615	044 - End Users and MoM handover inspection	0	23-Dec-17																	
RAB-KD8C20	KD8C - Projected achievement of Stage 8C of the Works, 044	0		23-Dec-17																
Roof Finishes																				
RAB-44-0520	044 - Install Roof Tiles - (242m²)	10	25-Sep-17 A	02-Oct-17 A																
RAB-44-0550	044 - Install Cat Ladder and Roof Hatch	6	25-Sep-17 A	07-Nov-17																
RAB-44-0540	044 - Install Railing	6	01-Nov-17	07-Nov-17																
Green Roof																				
RAB-44-0350	044 - Leveling screed - (242m²)	6	18-Sep-17 A	23-Sep-17 A																
RAB-44-0360	044 - Waterproof membrane - (242m²)	6	25-Sep-17 A	07-Oct-17 A																
RAB-44-0390	044 - Top Screed - (242m²)	6	09-Oct-17 A	14-Oct-17 A																
RAB-44-0400	044 - Install Green Roof Irrigation Systems	24	01-Nov-17	28-Nov-17																
RAB-44-0500	044 - Complete Green Roofing Works	24	08-Nov-17	05-Dec-17																
External Finishes																				
Facade																				
RAB-44-0490	044 - External Tiling	10	04-Sep-17 A	04-Nov-17																
RAB-44-0530	044 - External Painting	18	11-Sep-17 A	09-Oct-17 A																
RAB-44-0430	044 - Install External Louvers /Windows/Doors	18	25-Sep-17 A	18-Nov-17																
RAB-44-0570	044 - Dismantle Scaffolding	8	16-Oct-17 A	25-Oct-17 A																

Remaining Level of Effort
 Actual Work
 Critical Re...
 Actual Level of Effort
 Remaining Work
 Finish Con...

Date	Revision	Checked	Approved
01-Nov-17	3-Month Rolling Programme Stated 01 N...	SGJ	

Activity ID	Activity Name	Original Duration	Start	Finish	September 2017		October 2017				November 2017				December 2017				January 2018				
					17	24	01	08	15	22	29	05	12	19	26	03	10	17	24	31	07		
RAB-44-0590	044 - Make good external surfaces	12	11-Dec-17	23-Dec-17																			
At Grade																							
RAB-44-6520	044 - Prepare Sub Grade	12	01-Nov-17	14-Nov-17																			
RAB-44-6510	044 - Laying Geo Textile	12	15-Nov-17	28-Nov-17																			
RAB-44-6530	044 - Lay Granular Sub-Base	12	22-Nov-17	05-Dec-17																			
RAB-44-6540	044 - Laying Course	12	29-Nov-17	12-Dec-17																			
RAB-44-6500	044 - Concrete Block Paving	12	06-Dec-17	19-Dec-17																			
RAB-44-0630	044 - Snagging and Remedials	12	20-Dec-17	05-Jan-18																			
Specialist Installations																							
RAB-44-0600	044 - Install Lift (1 nos)	38	21-Aug-17 A	21-Oct-17 A																			
RAB-44-1100	044 - Installation of Roller Shutter Header Box	6	01-Nov-17	07-Nov-17																			
RAB-44-2250	044 - Small Glass Canopy North Elevation	5	01-Nov-17	06-Nov-17																			
RAB-44-1090	044 - Installation of Roller Shutter Steel Curtain	12	08-Nov-17	21-Nov-17																			
Curtain Wall																							
East																							
RAB-44-6870	044 - Complete Formwork Stripping to Roof Level	0	01-Nov-17																				
RAB-44-6880	044 - Install Primary Steelwork for Window Wall - East	6	06-Nov-17	11-Nov-17																			
RAB-44-6890	044 - Install Secondary Steelwork for Window Wall - East	6	13-Nov-17	18-Nov-17																			
RAB-44-6900	044 - Glazing to Window Wall - East	6	20-Nov-17	25-Nov-17																			
West																							
RAB-44-6920	044 - Install Primary Steelwork for Window Wall - West	6	27-Nov-17	02-Dec-17																			
RAB-44-6930	044 - Install Secondary Steelwork for Window Wall - West	6	04-Dec-17	09-Dec-17																			
RAB-44-6940	044 - Glazing to Window Wall - West	6	11-Dec-17	16-Dec-17																			
Utilities and Drainage																							
RAB-44-7895	044 - Construct Permanent Drainage and Manholes (Approx 100m)	30	10-Aug-17 A	15-Nov-17																			
RAB-44-7905	044 - Utilities and Common Telecom Ducting	12	18-Sep-17 A	11-Nov-17																			
RAB-44-7915	044 - Install Flushing Water Mains	12	25-Sep-17 A	18-Nov-17																			
RAB-44-7925	044 - Install Fresh Water Mains	12	25-Sep-17 A	18-Nov-17																			
RAB-44-7935	044 - Install FS Water Main	12	25-Sep-17 A	18-Nov-17																			
Testing & Commissioning																							
RAB-TC44-1010	044 - T&C, Lift	21	01-Nov-17	24-Nov-17																			
RAB-TC44-1000	044 - T&C (HVAC, FS, P&D, OTHERS)	18	01-Dec-17	21-Dec-17																			
Statutory Submissions & Approvals																							
BBE0																							
RAB-BEE-240	044 - Registered Energy Assessor Inspection & Certification	6	24-Nov-17	30-Nov-17																			
RAB-BEE-250	044 - Submit REA Certification to EDMS	0		30-Nov-17																			
RAB-BEE-260	044 - EDMS Issue of Cert of Compliance Registration (COCR)	24	01-Dec-17	30-Dec-17																			
EMSD - Building 044 Lift Inspection																							
RAB-FSD-210	044 - Submit EMSD Form 5 (Completion of Lift Installation)	0		24-Nov-17																			
RAB-FSD-220	044 - EMSD Lift Inspection	24	05-Dec-17	04-Jan-18																			
Water Supplies Department (WSD)																							
Commencement																							
Completion																							
RAB-WSD-684	044 - Submit WWO 46 Pt. IV	0		14-Dec-17																			
RAB-WSD-314	044 WSD Inspection/Meter Connection	24	15-Dec-17	15-Jan-18																			
Fire Services Department (HVAC)																							
RAB-FSD-1020	044 - Submit Form 314 to FSD, HVAC	0	06-Nov-17																				
RAB-FSD-1040	044 - Submit Form 501 to FSD, HVAC	0	22-Dec-17																				
Fire Water Services (FS)																							
Commencement																							
Completion																							
RAB-FSD-128	044 - Submit Form 501, FS	0	22-Dec-17																				
RAB-FSD-126	044 - Submit Form 314 to FSD, FS	0	22-Dec-17																				
Engineer (AECOM)																							

■ Remaining Level of Effort
■ Actual Work
■ Critical Re...
■ Actual Level of Effort
■ Remaining Work
■ Finish Con...

Date	Revision	Checked	Approved
01-Nov-17	3-Month Rolling Programme Stated 01 N...	SGJ	

Activity ID	Activity Name	Original Duration	Start	Finish	September 2017		October 2017				November 2017				December 2017				January 2018			
					17	24	01	08	15	22	29	05	12	19	26	03	10	17	24	31	07	
RAB-44-7280	044 - Submit Building 044 As Built Drawings to Engineer	0		06-Nov-17																		
Building 045 - Highways Depot & Administration Building																						
Raft Foundation																						
Diesel Fuel Chamber																						
Structure G/F to R/F																						
G/F to 1/F Walls & Columns																						
1/F Slab																						
Cure and Strip																						
1/F to 2/F Walls & Columns																						
2/F Slab																						
Cure and Strip																						
2/f to R/F Walls & Columns																						
Roof Level Slab																						
Cure and Strip																						
ABWF/E&M																						
Ground Floor, South - G/F																						
Degree 1, G/F																						
Degree 2, G/F																						
RAB-45-9805	045 - MEP 2nd Fix - G/F	24	29-May-17 A	11-Nov-17																		
RAB-45-9895	045 - Door & Windor Frame + Louver - G/F	18	01-Nov-17	21-Nov-17																		
RAB-45-9905	045 - Access for C3 to Install Equipment	0	21-Nov-17																			
RAB-45-10075	045 - Projeted achievement of Stage 8B of the Works - G/F	0		21-Nov-17																		
Degree 3, G/F																						
RAB-45-9935	045 - Wall Finish, Paint & Tile - G/F	35	05-Jun-17 A	09-Nov-17																		
RAB-45-9915	045 - Floor Finish (Paint & Tile) - G/F	35	02-Aug-17 A	09-Nov-17																		
RAB-45-10035	045 - Ceiling Plaster Board Frame & Ceiling Panel Frame - G/F	24	25-Sep-17 A	16-Nov-17																		
RAB-45-9815	045 - MEP Final Fix - G/F	18	16-Oct-17 A	11-Nov-17																		
RAB-45-9945	045 - Door Panel & Ironmongery - G/F	18	01-Nov-17	21-Nov-17																		
RAB-45-10055	045 - Ceiling Plaster Board & Ceiling Panel- G/F	12	03-Nov-17	16-Nov-17																		
RAB-45-9925	045 - Glazing - G/F	24	08-Nov-17	05-Dec-17																		
First Floor, 1/F																						
Degree 1, 1/F																						
Degree 2, 1/F																						
RAB-45-10015	045 - MEP 2nd Fix - 1/F	24	27-Jun-17 A	22-Nov-17																		
RAB-45-10105	045 - Door & Windor Frame + Louver - 1/F	18	03-Nov-17	23-Nov-17																		
RAB-45-10065	045 - Access to C3 Equipment Instalation***	0	21-Nov-17																			
Degree 3, 1/F																						
RAB-45-10145	045 - Wall Finish, Paint & Tile - 1/F	35	05-Jun-17 A	14-Nov-17																		
RAB-45-10125	045 - Floor Finish (Paint & Tile) - 1/F	35	07-Aug-17 A	14-Nov-17																		
RAB-45-10205	045 - Ceiling Plaster Board Frame Ceiling Panel Frame- 1/F	24	09-Oct-17 A	20-Nov-17																		
RAB-45-10025	045 - MEP Final Fix - 1/F	24	28-Oct-17 A	02-Dec-17																		
RAB-45-10155	045 - Door Panel & Ironmongery - 1/F	18	04-Nov-17	24-Nov-17																		
RAB-45-10245	045 - Ceiling Plaster Board & Ceiling Panel - 1/F	17	07-Nov-17	25-Nov-17																		
RAB-45-10285	045 - Glazing - 1/F	28	14-Nov-17	15-Dec-17																		
RAB-45-10275	045 - Handover to End users***	0	21-Nov-17																			
Second Floor, 2/F																						
Degree 1, 2/F																						
RAB-45-10195	045 - Plastering & Undercoat - 2/F	14	22-Jul-17 A	09-Nov-17																		
RAB-45-10185	045 - Screed - 2/F	14	31-Jul-17 A	13-Nov-17																		
RAB-45-10165	045 - MEP 1st Fix - 2/F	15	12-Aug-17 A	15-Nov-17																		
Degree 2, 2/F																						
RAB-45-10225	045 - MEP 2nd Fix - 2/F	24	19-Aug-17 A	28-Nov-17																		
RAB-45-10315	045 - Door & Windor Frame + Louver - 2/F	12	14-Nov-17	27-Nov-17																		
RAB-45-10295	045 - Access for C3 Equip. Installation, 2/F***	0	22-Nov-17																			
RAB-45-0950	KD8B - Projected achievement of Stage 8B of the Works - 2/F, 045	0		27-Nov-17																		

█ Remaining Level of Effort
█ Actual Work
█ Critical Re...
█ Actual Level of Effort
█ Remaining Work
◊ Finish Con...

Date	Revision	Checked	Approved
01-Nov-17	3-Month Rolling Programme Stated 01 N...	SGJ	

Activity ID	Activity Name	Original Duration	Start	Finish	September 2017		October 2017				November 2017				December 2017				January 2018		
					17	24	01	08	15	22	29	05	12	19	26	03	10	17	24	31	07
RAB-45-10255	045 - Power On - 2/F	0	29-Nov-17																		
Degree 3, 2/F																					
RAB-45-10355	045 - Wall Finish, Paint & Tile - 2/F	15	22-Jul-17 A	18-Nov-17																	
RAB-45-10375	045 - Ceiling Plaster Board Frame & Ceiling Panel Frame - 2/F	12	09-Nov-17	22-Nov-17																	
RAB-45-10335	045 - Floor Finish (Paint & Tile) - 2/F	11	16-Nov-17	28-Nov-17																	
RAB-45-10235	045 - MEP Final Fix - 2/F	16	20-Nov-17	07-Dec-17																	
RAB-45-10385	045 - Ceiling Plaster Board & Ceiling Panel - 2/F	12	24-Nov-17	07-Dec-17																	
RAB-45-10345	045 - Glazing - 2/F	15	02-Dec-17	19-Dec-17																	
RAB-45-10305	045 - MEP Balance of Works	38	08-Dec-17	24-Jan-18																	
RAB-45-0980	045 - Snagging and Remedials - 2/F	12	09-Dec-17	22-Dec-17																	
RAB-45-10365	045 - Door Panel & Ironmongery - 2/F	12	13-Dec-17	28-Dec-17																	
RAB-45-10265	045 - End Users and MoM handover inspection	0	28-Dec-17																		
RAB-45-0970	KD8C - Projected achievement of Stage 8C of the Works - 2/F, 045	0		28-Dec-17																	
External Finishes																					
Bldg. External Finishes																					
Facade																					
RAB-45-0710	045 - External Tiling	18	04-Sep-17 A	04-Oct-17 A																	
RAB-45-0620	045 - Install External Louvers /Windows/Doors	18	11-Sep-17 A	11-Nov-17																	
RAB-45-0690	045 - External Painting	18	11-Sep-17 A	07-Oct-17 A																	
RAB-45-0720	045 - Dismantle Scaffolding	8	01-Nov-17	09-Nov-17																	
RAB-45-0760	045 - Make good external surfaces	15	01-Nov-17	17-Nov-17																	
At Grade																					
RAB-45-6580	045 - Prepare Sub Grade	12	01-Nov-17	14-Nov-17																	
RAB-45-6570	045 - Laying Geo Textile	12	11-Nov-17	24-Nov-17																	
RAB-45-6590	045 - Lay Granular Sub-Base	12	22-Nov-17	05-Dec-17																	
RAB-45-6600	045 - Laying Course	12	02-Dec-17	15-Dec-17																	
RAB-45-6560	045 - Concrete Block Paving	12	13-Dec-17	28-Dec-17																	
Roof Finishes -																					
RAB-45-0910	045 - Install Roof Tiles	12	22-Sep-17 A	11-Nov-17																	
RAB-45-0930	045 - Install Cat Ladder and Roof Hatch	6	02-Oct-17 A	18-Nov-17																	
RAB-45-0880	045 - Top Screed	6	01-Nov-17	07-Nov-17																	
RAB-45-0920	045 - Install Railing	6	13-Nov-17	18-Nov-17																	
Green Roof - Noth Side, 2/F Level																					
RAB-45-0600	045 - Leveling screed	6	23-Sep-17 A	27-Sep-17 A																	
RAB-45-0650	045 - Waterproof membrane	6	28-Sep-17 A	14-Oct-17 A																	
RAB-45-0670	045 - Top Screed	6	16-Oct-17 A	19-Oct-17 A																	
RAB-45-0680	045 - Install green Roof Irrigation Systems	24	01-Nov-17	28-Nov-17																	
RAB-45-0740	045 - Complete Green Roofing Works	36	08-Nov-17	19-Dec-17																	
Specialist Installations																					
RAB-45-0590	045 - Install Lift (1 nos)	35	07-Aug-17 A	12-Oct-17 A																	
RAB-45-6000	045 - Small Glass Canopy North Elevation	5	10-Nov-17	15-Nov-17																	
RAB-45-1125	045 - Install Genset and swtich board G/F	6	13-Nov-17	18-Nov-17																	
Window Wall																					
East																					
RAB-45-6960	045 - Install Primary Steelwork for Window Wall	6	10-Nov-17	16-Nov-17																	
RAB-45-6970	045 - Install Secondary Steelwork for Window Wall	6	17-Nov-17	23-Nov-17																	
RAB-45-6980	045 - Glazing to Window Wall	6	24-Nov-17	30-Nov-17																	
West																					
RAB-45-6990	045 - Install Primary Steelwork for Window Wall	6	01-Dec-17	07-Dec-17																	
RAB-45-7000	045 - Install Secondary Steelwork for Window Wall	6	08-Dec-17	14-Dec-17																	
RAB-45-7010	045 - Glazing to Window Wall	6	15-Dec-17	21-Dec-17																	
Utilities and Drainage																					
RAB-45-7935	045 - Construct Permanent Drainage and Manholes (Approx 180m)	54	17-Aug-17 A	18-Nov-17																	

█ Remaining Level of Effort
█ Actual Work
█ Critical Re...
█ Actual Level of Effort
█ Remaining Work
◊ Finish Con...

Date	Revision	Checked	Approved
01-Nov-17	3-Month Rolling Programme Stated 01 N...	SGJ	

Activity ID	Activity Name	Original Duration	Start	Finish	September 2017		October 2017				November 2017				December 2017				January 2018		
					17	24	01	08	15	22	29	05	12	19	26	03	10	17	24	31	07
RAB-45-7945	045 - Utilites and Common Telecom Ducting	18	09-Oct-17 A	24-Nov-17																	
RAB-45-7955	045 - Install Flushing Water Mains	18	08-Nov-17	28-Nov-17																	
RAB-45-7965	045 - Install Fresh Water Mains	18	09-Nov-17	29-Nov-17																	
RAB-45-7975	045 - Install FS Water Main	18	09-Nov-17	29-Nov-17																	
Testing & Commissioning																					
RAB-TC45-1030	045 - T&C, Lift	21	01-Nov-17	24-Nov-17																	
RAB-TC45-1020	045 - T&C (HVAC, FS, P&D, OTHERS)	25	24-Nov-17	22-Dec-17																	
Statutory Submissions & Approvals (Day 670 Completion)																					
BEO																					
RAB-BEE-270	045 - Registered Energy Assessor Inspection & Certification	6	01-Dec-17	07-Dec-17																	
RAB-BEE-280	045 - Submit REA Certification to EDMS	0	08-Dec-17																		
RAB-BEE-290	045 - EDMS Issue of Cert of Compliance Registration (COCR)	24	08-Dec-17	08-Jan-18																	
EMSD - Building 045 Lift Inspection																					
RAB-FSD-240	045 - Submit EMSD Form 5 (Completion of Lift Installation)	0		25-Nov-17																	
RAB-FSD-250	045 - EMSD Lift Inspection	6	02-Dec-17	08-Dec-17																	
RAB-FSD-130	045 - EMSD Lift Certificate Issued - Building 045	0		09-Dec-17																	
Fuel Tank - DG License																					
RAB-FSD-660	045 - FSD Inspection & Approval	13	01-Nov-17	15-Nov-17																	
RAB-FSD-680	045 - FSD Issue License	0		16-Nov-17																	
Generator Set - EPD Permit																					
RAB-EPD-0130	045 - Submission Form 501to FSD	0	01-Nov-17																		
Generator Set - DG Licence																					
RAB-FSD-690	045- Genset Ready for DG Inspection	0		18-Nov-17																	
RAB-FSD-700	045 - Notify FSD for DG Inspection	0	21-Nov-17																		
RAB-FSD-710	045 - FSD (Vent) /FS Inspection/Process License	14	21-Nov-17	06-Dec-17																	
RAB-FSD-720	045 - DG Licence Issued	0		07-Dec-17																	
Water Supplies Department (WSD)																					
Commencement																					
Completion																					
RAB-WSD-654	045 - Submit WWO 46 Pt. IV	0		01-Nov-17																	
RAB-WSD-284	045 - WSD's Processing/Inspection/Meter Connection	24	06-Dec-17	05-Jan-18																	
HVAC																					
RAB-FSD-1000	045 - Submit Form 501	0	23-Dec-17																		
FSD																					
Commencement																					
Completion																					
RAB-FSD-630	045 - Submit Form 501 - FS	0	23-Dec-17																		
RAB-FSD-830	045 - Submit Form 314 - FS	0	23-Dec-17																		
Engineer (AECOM)																					
RAB-45-7310	045 - Submit Building 045 As Built Drawings to Engineer	0		09-Dec-17																	
Building 050 - Public Toilets Type 2																					
Public Toilet (Portion H1)																					
Excavation																					
Raft																					
Structure																					
ABWF/E&M																					
Internal Finishes																					
Degree 1																					
RAB-50-1340	050 H1 - Rendering/Plastering & Undercoat	12	02-Aug-17 A	07-Nov-17																	
RAB-50-1170	050 H1 - MEP 1st Fix	24	07-Aug-17 A	18-Nov-17																	
RAB-50-1320	050 H1 - Screeding	6	08-Nov-17	14-Nov-17																	
RAB-KD9A40	050 H1 - Access for C3 Cabling Works	0	18-Nov-17																		
RAB-KD9A10	KD9A - Projected achievement of Stage 9A of the Works	0		18-Nov-17																	
Degree 2																					

█ Remaining Level of Effort
█ Actual Work
█ Critical Re...
█ Actual Level of Effort
█ Remaining Work
◊ Finish Con...

Date	Revision	Checked	Approved
01-Nov-17	3-Month Rolling Programme Stated 01 N...	SGJ	

Activity ID	Activity Name	Original Duration	Start	Finish	September 2017		October 2017				November 2017				December 2017				January 2018			
					17	24	01	08	15	22	29	05	12	19	26	03	10	17	24	31	07	14
RAB-50-1360	050 H1 - Louver / Door Frame	12	08-Nov-17	21-Nov-17																		
RAB-50-1270	050 H1 - MEP 2nd Fix	24	10-Nov-17	07-Dec-17																		
RAB-50-1380	050 H1 - Access for C3 Equip. Installation	0	07-Dec-17																			
RAB-KD9B10	KD9B - Projected achievement of Stage 9B of the Works	0		07-Dec-17																		
RAB-50-1300	050 H1 - Power On	0	08-Dec-17																			
Degree 3																						
RAB-50-1310	050 H1 - Ceiling Frame	24	14-Nov-17	11-Dec-17																		
RAB-50-1350	050 H1 - Wall Finish	24	18-Nov-17	15-Dec-17																		
RAB-50-1370	050 H1 - Ceiling & Floor Finish	24	23-Nov-17	20-Dec-17																		
RAB-50-1280	050 H1 - MEP Final Fix	13	12-Dec-17	28-Dec-17																		
RAB-50-1390	050 H1 - Door panel & Ironmongery	12	12-Dec-17	27-Dec-17																		
RAB-50-1290	050 H1 - Snagging and Remedials	12	28-Dec-17	11-Jan-18																		
RAB-KD9C10	KD9C - Projected achievement of Stage 9C of the Works	0		28-Dec-17																		
RAB-50-7460	050 H1 - End Users and MoM handover inspection	0	29-Dec-17																			
Specialist installation																						
RAB-50-1240	050 H1 - Installation of Sanitaryware and Fixtures	30	20-Nov-17	23-Dec-17																		
Roof Finishes																						
RAB-50-1180	050 H1 - Install Roof Tiles - 140m²	4	09-Oct-17 A	04-Nov-17																		
RAB-50-1200	050 H1 - Install Railing - 49m	4	06-Nov-17	09-Nov-17																		
RAB-50-1210	050 H1 - Install Cat Ladder and Roof Access Hatch	4	06-Nov-17	09-Nov-17																		
RAB-50-4470	050 H1 - Installation of Aluminium Canopy	10	10-Nov-17	21-Nov-17																		
RAB-50-4320	050 H1 - Install Aluminium Cladding	10	22-Nov-17	02-Dec-17																		
RAB-50-1100	050 H1 - Install Skylights (8No)	8	28-Nov-17	06-Dec-17																		
External Finishes																						
RAB-50-1190	050 H1 - External Tiling	6	25-Sep-17 A	14-Oct-17 A																		
RAB-50-1120	050 H1 - Install External Louvers /Windows/Doors	12	01-Nov-17	14-Nov-17																		
RAB-50-1250	050 H1 - Dismantle Scaffolding	4	04-Dec-17	07-Dec-17																		
RAB-50-1260	050 H1 - Make good external surfaces	6	08-Dec-17	14-Dec-17																		
Utilities and Drainage																						
RAB-50-8035	050 H1 - Install Flushing Water Mains	12	01-Nov-17	14-Nov-17																		
RAB-50-8045	050 H1 - Install Fresh Water Mains	12	01-Nov-17	14-Nov-17																		
Testing & Commissioning																						
RAB-TC50-1000	050 H1 - T&C (HVAC, FS, P&D, OTHERS)	4	29-Dec-17	03-Jan-18																		
Statutory Submissions & Approvals (Day 670 Completion)																						
BBEO																						
RAB-BEE-300	050 H1 - Registered Energy Assessor Inspection & Certification	6	28-Dec-17	04-Jan-18																		
Water Supplies Department (WSD)																						
Commencement																						
Completion																						
RAB-WSD-454	050 H1 - Submit WWO 46 Pt. IV	0	22-Nov-17																			
RAB-WSD-464	050 H1 - WSD Inspection/Meter Connection for Building 050	24	27-Nov-17	27-Dec-17																		
RAB-WSD-474	050 H1 - WSD Issue WWO 046 Part V, Cert Plumbing Inst'n Compl	0		27-Dec-17																		
Fire Services Department (VAC)																						
RAB-FSD-1080	050 H1 - Submit Form 314	0	01-Nov-17																			
Engineer (AECOM)																						
Public Toilet (Portion H2)																						
Excavation																						
Raft																						
Structure																						
ABWF/E&M																						
Internal Finishes																						
Degree 1																						
RAB-50-2330	050 H2 - Plastering/Rendering & Undercoat	12	07-Aug-17 A	07-Nov-17																		
RAB-50-2170	050 H2 - MEP 1st Fix	24	09-Aug-17 A	15-Nov-17																		

█ Remaining Level of Effort
█ Actual Work
█ Critical Re...
█ Actual Level of Effort
█ Remaining Work
◆ Finish Con...

Date	Revision	Checked	Approved
01-Nov-17	3-Month Rolling Programme Stated 01 N...	SGJ	

Activity ID	Activity Name	Original Duration	Start	Finish	September 2017		October 2017				November 2017				December 2017				January 2018	
					17	24	01	08	15	22	29	05	12	19	26	03	10	17	24	31
RAB-KD10A10	050 H2 - Projected achievement of Stage 10A of the Works	0		01-Nov-17																
RAB-50-2390	050 H2 - Access for C3 Cabling Works	0	01-Nov-17																	
RAB-50-2310	050 H2 - Screeding	6	08-Nov-17	14-Nov-17																
Degree 2																				
RAB-50-2270	050 H2 - MEP 2nd Fix	24	02-Nov-17	29-Nov-17																
RAB-50-2360	050 H2 - Louver / Door Frame	12	08-Nov-17	21-Nov-17																
RAB-50-2300	050 H2 - Power On	0	20-Nov-17																	
RAB-KD10B10	050 H2 - Projected achievement of Stage 10B of the Works	0		21-Nov-17																
RAB-KD10B40	050 H2 - Access for C3 Equip. Installation	0	21-Nov-17																	
Degree 3																				
RAB-50-2340	050 H2 - Ceiling Frame	24	16-Nov-17	13-Dec-17																
RAB-50-2350	050 H2 - Wall Finish	24	22-Nov-17	19-Dec-17																
RAB-50-2370	050 H2 - Ceiling & Floor Finish	24	24-Nov-17	21-Dec-17																
RAB-50-2280	050 H2 - MEP Final Fix	14	25-Nov-17	12-Dec-17																
RAB-50-7470	050 H2 - End Users and MoM handover inspection	0	12-Dec-17																	
RAB-50-2380	050 H2 - Door panel & Ironmongery	12	13-Dec-17	28-Dec-17																
RAB-KD10C10	050 H2 - Projected achievement of Stage 10C of the Works	0		19-Dec-17																
RAB-50-2290	050 H2 - Snagging and Remedials	12	29-Dec-17	12-Jan-18																
Specialist installation																				
RAB-50-2240	050 H2 - Installation of Sanitaryware and Fixtures	30	21-Nov-17	27-Dec-17																
Roof Finishes																				
RAB-50-2180	050 H2 - Install Roof Tiles - 140m²	4	09-Oct-17 A	28-Oct-17 A																
RAB-50-2200	050 H2 - Install Railing - 49m	4	01-Nov-17	04-Nov-17																
RAB-50-2210	050 H2 - Install Cat Ladder and Roof Access Hatch	4	01-Nov-17	04-Nov-17																
RAB-50-2230	050 H2 - Installation of Aluminium Canopy	10	06-Nov-17	16-Nov-17																
RAB-50-4360	050 H2 - Install Aluminium Cladding	10	17-Nov-17	28-Nov-17																
RAB-50-2100	050 H2 - Install Skylights (8No)	8	23-Nov-17	01-Dec-17																
External Finishes																				
RAB-50-2150	050 H2 - External Render	12	09-Aug-17 A	23-Sep-17 A																
RAB-50-2190	050 H2 - External Tiling	6	25-Sep-17 A	14-Oct-17 A																
RAB-50-2120	050 H2 - Install External Louvers /Windows/Doors	12	01-Nov-17	14-Nov-17																
RAB-50-2220	050 H2 - External Painting	12	01-Nov-17	14-Nov-17																
RAB-50-2250	050 H2 - Dismantle Scaffolding	4	29-Nov-17	02-Dec-17																
RAB-50-2260	050 H2 - Make good external surfaces	6	04-Dec-17	09-Dec-17																
Utilities and Drainage																				
RAB-50-7915	050 H2 - Install Flushing Water Mains	12	01-Nov-17	14-Nov-17																
RAB-50-7925	050 H2 - Install Fresh Water Mains	12	01-Nov-17	14-Nov-17																
Testing & Commissioning																				
RAB-TC50-1010	050 H2 - T&C (HVAC, FS, P&D, OTHERS)	4	13-Dec-17	16-Dec-17																
Statutory Submissions & Approvals (Day 670 Completion)																				
BEO																				
RAB-BEE-330	050 H2 - Registered Energy Assessor Inspection & Certification	6	30-Nov-17	06-Dec-17																
RAB-BEE-340	050 H2 - Submit REA Certification to EDMS	0	07-Dec-17																	
RAB-BEE-350	050 H2 - EDMS Issue of Cert of Compliance Registration (COCR)	24	07-Dec-17	06-Jan-18*																
Water Supplies Department (WSD)																				
Commencement																				
Completion																				
RAB-WSD-594	050 H2 - Submit WWO 46 Pt. IV	0	30-Nov-17																	
RAB-WSD-434	050 H2 - WSD Inspection/Meter Connection for Building 050	24	30-Nov-17	29-Dec-17																
RAB-WSD-444	050 H2 - SD Issue WWO 046 Part V, Cert Plumbing Inst'n Compl &	0		29-Dec-17																
Fire Services Department (VAC)																				
RAB-FSD-1110	050 H2 - Submit Form 314	0	01-Nov-17																	
RAB-FSD-1120	050 H2 - Submit Form 501	0	18-Dec-17																	

█ Remaining Level of Effort
█ Actual Work
█ Critical Re...
█ Actual Level of Effort
█ Remaining Work
◊ Finish Con...

Date	Revision	Checked	Approved
01-Nov-17	3-Month Rolling Programme Stated 01 N...	SGJ	

Activity ID	Activity Name	Original Duration	Start	Finish	September 2017		October 2017				November 2017				December 2017				January 2018	
					17	24	01	08	15	22	29	05	12	19	26	03	10	17	24	31
Engineer (AECOM)																				
RAB-50-7370	050 H2 - Submit Building 050 H1 As Built Drawings to Engineer	0		18-Dec-17																
Public Toilet (Portion A1)																				
Excavation																				
Raft																				
RAB-50-3050	050 A1 - Ground Slab	6	18-Sep-17 A	16-Oct-17 A																
Structure																				
ABWF/E&M																				
Internal Finishes																				
Degree 1																				
RAB-50-3310	050 A1 - Plastering/Rendering & Undercoat	4	26-Aug-17 A	11-Nov-17																
RAB-50-3170	050 A1 - MEP 1st Fix	16	28-Aug-17 A	18-Nov-17																
RAB-50-3320	050 A1 - Screeding	6	09-Nov-17	15-Nov-17																
RAB-50-3330	050 A1 - Access for C3 for Cabling Works	0	18-Nov-17																	
RAB-KD11A10	KD11A - Projected achievement of Stage 11A of the Works	0		18-Nov-17																
Degree 2																				
RAB-50-3270	050 A1 - MEP 2nd Fix	18	10-Nov-17	30-Nov-17																
RAB-50-3360	050 A1 - Louver / Door Frame	12	13-Nov-17	25-Nov-17																
RAB-50-3390	050 A1 - Access for C3 for Equip. Installation	0	30-Nov-17																	
RAB-KD11B10	KD11B - Projected achievement of Stage 11B of the Works	0		01-Dec-17																
RAB-50-3300	050 A1 - Power On	0	01-Dec-17																	
Degree 3																				
RAB-50-3340	050 A1 - Ceiling Frame	24	16-Nov-17	13-Dec-17																
RAB-50-3280	050 A1 - MEP Final Fix	12	17-Nov-17	30-Nov-17																
RAB-50-3350	050 A1 - Wall Finish	24	22-Nov-17	19-Dec-17																
RAB-50-3370	050 A1 - Ceiling & Floor Finish	24	25-Nov-17	22-Dec-17																
RAB-50-3380	050 A1 - Door panel & Ironmongery	12	12-Dec-17	27-Dec-17																
RAB-50-3290	050 A1 - Snagging and Remedials	12	15-Dec-17	30-Dec-17																
RAB-KD11C10	KD11C - Projected achievement of Stage 11C of the Works	0		27-Dec-17																
Specialist installation																				
RAB-50-3240	050 A1 - Installation of Sanitaryware and Fixtures	30	24-Nov-17	30-Dec-17																
Roof Finishes																				
RAB-50-3180	050 A1 - Install Roof Tiles - 140m ²	4	25-Sep-17 A	02-Oct-17 A																
RAB-50-3200	050 A1 - Install Railing - 49m	4	01-Nov-17	04-Nov-17																
RAB-50-3210	050 A1 - Install Cat Ladder and Roof Access Hatch	4	06-Nov-17	09-Nov-17																
RAB-50-3230	050 A1 - Installation of Aluminium Canopy	10	10-Nov-17	21-Nov-17																
RAB-50-4370	050 A1 - Install Aluminium Cladding	10	22-Nov-17	02-Dec-17																
RAB-50-3100	050 A1 - Install Skylights (8No)	8	28-Nov-17	06-Dec-17																
External Finishes																				
RAB-50-3150	050 A1 - External Render	12	25-Sep-17 A	11-Nov-17																
RAB-50-3120	050 A1 - Install External Louvers /Windows/Doors	12	13-Nov-17	25-Nov-17																
RAB-50-3190	050 A1 - External Tiling	6	13-Nov-17	18-Nov-17																
RAB-50-3220	050 A1 - External Painting	12	13-Nov-17	25-Nov-17																
RAB-50-3250	050 A1 - Dismantle Scaffolding	4	04-Dec-17	07-Dec-17																
RAB-50-3260	050 A1 - Make good external surfaces	6	08-Dec-17	14-Dec-17																
Utilities and Drainage																				
RAB-50-7955	050 A1 - Install Flushing Water Mains	12	01-Nov-17	14-Nov-17																
RAB-50-7965	050 A1 - Install Fresh Water Mains	12	01-Nov-17	14-Nov-17																
Testing & Commissioning																				
RAB-TC50-1020	050 A1 - T&C (HVAC, FS, P&D, OTHERS)	6	27-Nov-17	02-Dec-17																
Statutory Submissions & Approvals (Day 670 Completion)																				
BBEO																				
RAB-BEE-360	050 A1 - Registered Energy Assessor Inspection & Certification	6	29-Nov-17	05-Dec-17																
RAB-BEE-370	050 A1 - Submit REA Certification to EDMS	0	06-Dec-17																	

█ Remaining Level of Effort
█ Actual Work
█ Critical Re...
█ Actual Level of Effort
█ Remaining Work
█ Finish Con...

Date	Revision	Checked	Approved
01-Nov-17	3-Month Rolling Programme Stated 01 N...	SGJ	

Activity ID	Activity Name	Original Duration	Start	Finish	September 2017		October 2017				November 2017				December 2017				January 2018				
					17	24	01	08	15	22	29	05	12	19	26	03	10	17	24	31	07	14	
RAB-BEE-380	050 A1 - EDMS Issue of Cert of Compliance Registration (COCR)	24	06-Dec-17	05-Jan-18																			
Water Supplies Department (WSD)																							
Commencement																							
Completion																							
RAB-WSD-394	050 A1 - Submit WWO 46 Pt. IV	0		30-Nov-17																			
RAB-WSD-404	050 A1 - WSD Inspection/Meter Connection	24	01-Dec-17	30-Dec-17																			
RAB-WSD-414	050 A1 - WSD Issue WWO 046 Part V, Plumbing Inst'n Compl & Wz	0		30-Dec-17																			
Fire Services Department (VAC)																							
RAB-FSD-1050	050 A1 - Submit Form 314	0	29-Nov-17																				
RAB-FSD-1060	050 A1 - Submit Form 501	0	04-Dec-17																				
RAB-FSD-1180	050 A1 - FS Inspection	14	18-Dec-17	05-Jan-18																			
Engineer (Aecom)																							
RAB-50-7400	050 A1 - Submit Building 050 A1 As Built Drawings to Engineer	0		18-Dec-17																			
Public Toilet (Portion A2)																							
Excavation																							
Raft																							
Structure																							
ABWF/E&M																							
Internal Finishes																							
Degree 1																							
RAB-50-4170	050 A2 - MEP 1st Fix	24	18-Aug-17 A	18-Nov-17																			
RAB-50-4420	050 A2 - Plastering/Rendering & Undercoat	12	22-Aug-17 A	10-Nov-17																			
RAB-KD12A10	KD12A - Projected achievement of Stage 12A of the Works	0		01-Nov-17																			
RAB-50-4410	050 A2 - Access for C3 Cabling Works	0	01-Nov-17																				
RAB-50-4400	050 A2 - Screeding	6	11-Nov-17	17-Nov-17																			
Degree 2																							
RAB-50-4270	050 A2 - MEP 2nd Fix	24	10-Nov-17	07-Dec-17																			
RAB-50-4440	050 A2 - Louver / Door Frame	12	11-Nov-17	24-Nov-17																			
RAB-KD12B10	KD12B - Projected achievement of Stage 12B of the Works	0		01-Dec-17																			
RAB-50-4480	050 A2 - Access for C3 Equip. Installation	0	01-Dec-17																				
RAB-50-4300	050 A2 - Power On	0	08-Dec-17																				
Degree 3																							
RAB-50-4390	050 A2 - Ceiling Frame	24	17-Nov-17	14-Dec-17																			
RAB-50-4280	050 A2 - MEP Final Fix	15	22-Nov-17	08-Dec-17																			
RAB-50-4430	050 A2 - Wall Finish	24	27-Nov-17	23-Dec-17																			
RAB-50-4450	050 A2 - Ceiling & Floor Finish	24	30-Nov-17	29-Dec-17																			
RAB-50-4290	050 A2 - Snagging and Remedials	12	01-Dec-17	14-Dec-17																			
RAB-50-4460	050 A2 - Door panel & Ironmongery	12	14-Dec-17	29-Dec-17																			
RAB-KD12C10	KD12C - Projected achievement of Stage 12C of the Works	0		30-Dec-17																			
Specialist installation																							
RAB-50-4240	050 A2 - Installation of Sanitaryware and Fixtures	30	23-Nov-17	29-Dec-17																			
Roof Finishes																							
RAB-50-4180	050 A2 - Install Roof Tiles - 140m²	4	18-Sep-17 A	04-Nov-17																			
RAB-50-4210	050 A2 - Install Cat Ladder and Roof Access Hatch	4	28-Sep-17 A	09-Nov-17																			
RAB-50-4200	050 A2 - Install Railing - 49m	4	06-Nov-17	09-Nov-17																			
RAB-50-4230	050 A2 - Installation of Aluminium Canopy	10	10-Nov-17	21-Nov-17																			
RAB-50-4380	050 A2 - Install Aluminium Cladding	10	22-Nov-17	02-Dec-17																			
RAB-50-4100	050 A2 - Install Skylights (8No)	8	28-Nov-17	06-Dec-17																			
External Finishes																							
RAB-50-4150	050 A2 - External Render	12	15-Aug-17 A	23-Sep-17 A																			
RAB-50-4190	050 A2 - External Tiling	6	09-Oct-17 A	07-Nov-17																			
RAB-50-4120	050 A2 - Install External Louvers /Windows/Doors	12	01-Nov-17	14-Nov-17																			
RAB-50-4220	050 A2 - External Painting	12	08-Nov-17	21-Nov-17																			
RAB-50-4250	050 A2 - Dismantle Scaffolding	4	22-Nov-17	25-Nov-17																			

█ Remaining Level of Effort
█ Actual Work
█ Critical Re...
█ Actual Level of Effort
█ Remaining Work
◆ Finish Con...

Date	Revision	Checked	Approved
01-Nov-17	3-Month Rolling Programme Stated 01 N...	SGJ	

Activity ID	Activity Name	Original Duration	Start	Finish	September 2017		October 2017				November 2017				December 2017				January 2018		
					17	24	01	08	15	22	29	05	12	19	26	03	10	17	24	31	07
RAB-50-4260	050 A2 - Make good external surfaces	6	07-Dec-17	13-Dec-17																	
Utilities and Drainage																					
RAB-50-7975	050 A2 - Construct Permanent Drainage and Manholes (Approx 20m)	60	06-Mar-17 A	11-Nov-17																	
RAB-50-7985	050 A2 - Utilities and Common Telecom Ducting	12	16-Sep-17 A	19-Sep-17 A																	
RAB-50-7995	050 A2 - Install Flushing Water Mains	12	13-Nov-17	25-Nov-17																	
RAB-50-8005	050 A2 - Install Fresh Water Mains	12	13-Nov-17	25-Nov-17																	
Testing & Commissioning																					
RAB-TC50-1030	050 A2 - T&C (HVAC, FS, P&D, OTHERS)	4	09-Dec-17	13-Dec-17																	
Statutory Submissions & Approvals (Day 670 Completion)																					
BBE0																					
RAB-BEE-390	050 A2 - Registered Energy Assessor Inspection & Certification	6	01-Nov-17	07-Nov-17																	
RAB-BEE-400	050 A2 - Submit REA Certification to EDMS	0	08-Nov-17																		
RAB-BEE-410	050 A2 - EDMS Issue of Cert of Compliance Registration (COCR)	24	08-Nov-17	05-Dec-17																	
Water Supplies Department (WSD)																					
Commencement																					
Completion																					
RAB-WSD-124	050 A2 - Submit WWO 46 Pt. IV	0	22-Nov-17																		
RAB-WSD-134	050 A2 - WSD Inspection/Meter Connection for Building 050	24	15-Dec-17	15-Jan-18																	
Fire Services Department (VAC)																					
RAB-FSD-260	050 A2 - Submit Form 314	0	01-Nov-17																		
RAB-FSD-270	050 A2 - Submit Form 501	0	14-Dec-17																		
RAB-FSD-1200	050 A2 - FS Inspection	14	30-Dec-17	16-Jan-18																	
Engineer (AECOM)																					
RAB-50-7430	050 A2 - Submit Building 050 H1 As Built Drawings to Engineer	0		14-Dec-17																	
Building 053 - Outbound X-Ray Building																					
Excavation																					
Raft																					
Structure																					
External Walls																					
To First Floor Level																					
Internal Structures																					
First Floor																					
Slabs																					
Cure and Strip																					
1/F - Roof Level																					
Staircases																					
Roof Floor																					
Slabs																					
Cure and Strip																					
ABWF/E&M																					
Ground Floor																					
Degree 1 - G/F																					
Degree 2 - G/F																					
RAB-53-7895	053 - Door/Window frame, frame for Wall Panel & Cladding, G/F	18	12-Jun-17 A	07-Oct-17 A																	
Degree 3 - G/F																					
RAB-53-0660	053 - Wall Tiling & Wall Painting Final Coat (2), G/F	40	13-Apr-17 A	23-Sep-17 A																	
RAB-53-0730	053 - MEP Final Fix, G/F	45	29-Apr-17 A	28-Sep-17 A																	
RAB-53-8205	053 - Floor Painting & Tiling, G/F	18	14-Aug-17 A	11-Nov-17																	
RAB-53-7915	053 - Ceiling Plaster Board, G/F	12	28-Aug-17 A	14-Nov-17																	
RAB-53-0710	053 - Door Panel & Ironmongery, G/F	12	04-Sep-17 A	14-Nov-17																	
RAB-53-0700	053 - Glazing, G/F	12	01-Nov-17	14-Nov-17																	
First Floor																					
Degree 1 - 1/F																					
Degree 2 - 1/F																					
RAB-53-8015	053 - Door/Window frame and frame, 1/F	12	03-Jul-17 A	07-Oct-17 A																	

Remaining Level of Effort
 Actual Work
 Critical Re...
 Actual Level of Effort
 Remaining Work
 Finish Con...

Date	Revision	Checked	Approved
01-Nov-17	3-Month Rolling Programme Stated 01 N...	SGJ	

Activity ID	Activity Name	Original Duration	Start	Finish	September 2017		October 2017				November 2017				December 2017				January 2018		
					17	24	01	08	15	22	29	05	12	19	26	03	10	17	24	31	07
RAB-53-8065	053 - Power On, 1/F	0	20-Oct-17 A																		
RAB-53-8045	053 - Projected Achievement of Stage 1B	0		01-Nov-17																	
RAB-53-8005	053 - Access to C3 equipment Installatrion***	0	01-Nov-17																		
Degree 3 - 1/F																					
RAB-53-8155	053 - Wall Tiling & Wall Painting Final Coat (2), 1/F	40	20-Apr-17 A	28-Oct-17 A																	
RAB-53-8105	053 - MEP Final Fix, 1/F	45	31-May-17 A	28-Sep-17 A																	
RAB-53-8215	053 - Floor Painting & Tiling, 1/F	18	21-Aug-17 A	10-Nov-17																	
RAB-53-7995	053 - Ceiling Plaster Board, 1/F	12	25-Aug-17 A	17-Nov-17																	
RAB-53-8085	053 - Door Panel & Ironmongery, 1/F	12	07-Sep-17 A	14-Nov-17																	
RAB-53-8075	053 - Glazing, 1/F	24	11-Sep-17 A	17-Nov-17																	
RAB-53-8195	053 - MEP Balance of Works	39	29-Sep-17 A	30-Nov-17																	
RAB-53-8125	053 - Snagging and Remedials, 1/F	24	11-Nov-17	08-Dec-17																	
RAB-53-8095	053 - Projected Achievement of Stage 1C, 1/F	0		14-Nov-17																	
External Finishes																					
External Facade																					
RAB-53-0500	053 - External Painting	21	11-Sep-17 A	14-Nov-17																	
RAB-53-0570	053 - Dismantle Scaffolding	8	08-Nov-17	16-Nov-17																	
RAB-53-0640	053 - Make good external surfaces	12	06-Dec-17	19-Dec-17																	
At Grade																					
RAB-53-7615	053 - Prepare Sub Grade	12	15-Nov-17	28-Nov-17																	
RAB-53-7885	053 - Laying Geo Textile	12	24-Nov-17	07-Dec-17																	
RAB-53-7625	053 - Lay Granular Sub-Base	12	04-Dec-17	16-Dec-17																	
RAB-53-7635	053 - Laying Course	12	13-Dec-17	28-Dec-17																	
RAB-53-7695	053 - Concrete Block Paving	12	22-Dec-17	08-Jan-18																	
Roof Finishes																					
RAB-53-0530	053 - Install Railing - 105m	6	14-Aug-17 A	07-Nov-17																	
RAB-53-0520	053 - Install Roof Tiles - (490m²)	10	21-Aug-17 A	07-Oct-17 A																	
Spacialist Installations																					
RAB-53-0600	053 - Install Lift (1 nos)	60	19-Apr-17 A	18-Nov-17																	
Glazed Canopy																					
RAB-53-0620	053 - Construct high level Canopy at +9.95mPD	24	15-Nov-17	12-Dec-17																	
Utilities and Drainage																					
RAB-53-7595	053 - Construct Permanent Drainage and Manholes (Approx 135m)	75	01-Mar-17 A	16-Sep-17 A																	
RAB-53-7610	053 - Install Flushing Water Mains	12	18-Sep-17 A	14-Nov-17																	
RAB-53-7620	053 - Install Fresh Water Mains	12	18-Sep-17 A	14-Nov-17																	
RAB-53-7655	053 - Install FS Water Main	12	18-Sep-17 A	14-Nov-17																	
Testing & Commissioning																					
RAB-TC53-1040	053 - T&C (HVAC, FS, P&D, OTHERS)	28	28-Sep-17 A	02-Dec-17																	
RAB-TC53-1050	053 - T&C, Lift	21	28-Nov-17	21-Dec-17																	
Statutory Submissions & Approvals (Day 470 Completion)																					
BEO																					
RAB-BEE-420	053 - Registered Energy Assessor Inspection & Certification	6	01-Nov-17	07-Nov-17																	
RAB-BEE-430	053 - Submit REA Certification to EDMS	0	08-Nov-17																		
RAB-BEE-440	053 - EDMS Issue of Cert of Compliance Registration (COCR)	24	08-Nov-17	05-Dec-17																	
EMSD - Building 053 Lift Inspection																					
RAB-FSD-150	053 - Submit EMSD Form 5 (Completion of Lift Installation)	0		15-Dec-17																	
Water Supplies Department (WSD)																					
Commencement																					
Completion																					
RAB-WSD-100	053 - Submit WWO 46 Pt. IV	0	27-Nov-17																		
RAB-WSD-102	053 - WSD's Processing/Inspection/Meter Connection	24	27-Nov-17	23-Dec-17																	
RAB-WSD-104	053 - WSD Issue WWO 046 Part V, Plumbing Compl. Cert & Water	0		23-Dec-17																	
VAC																					
RAB-FSD-1140	053 - Submit Form 314	0	01-Nov-17																		

█ Remaining Level of Effort
█ Actual Work
█ Critical Re...
█ Actual Level of Effort
█ Remaining Work
◆ Finish Con...

Date	Revision	Checked	Approved
01-Nov-17	3-Month Rolling Programme Stated 01 N...	SGJ	

Activity ID	Activity Name	Original Duration	Start	Finish	September 2017		October 2017				November 2017				December 2017				January 2018		
					17	24	01	08	15	22	29	05	12	19	26	03	10	17	24	31	07
RAB-FSD-1150	053 - Submit Form 501	0	04-Dec-17																		
FSD																					
Commencement																					
Completion																					
RAB-FSD-410	053 - Submit WWO 46 Pt. I V	0	20-Nov-17																		
RAB-FSD-670	053 - Submit Form 501	0	27-Nov-17																		
RAB-FSD-420	053 - FSD Inspection Period	14	11-Dec-17	28-Dec-17																	
RAB-FSD-430	053 - Issue Form 172, FS Compliance Cert.	0		28-Dec-17																	
Engineer (AECOM)																					
RAB-53-7460	053 - Submit Building 053 As Built Drawings to Engineer	0		20-Nov-17																	
Building 058 - Outbound X-Ray Scan Tunnel																					
Excavation																					
Raft																					
Structure																					
Walls																					
South																					
North																					
Roof Slabs																					
Cure and Strip																					
ABWF/E&M																					
Internal Finishes																					
Degree 1																					
Degree 2																					
RAB-58-0640	058 - Power On	0	20-Oct-17 A																		
Degree 3																					
RAB-58-0700	058 - Floor Finish (Epoxy Paint)	12	24-Jul-17 A	14-Nov-17																	
RAB-58-7520	058 - End Users and MoM handover inspection	0		14-Nov-17																	
RAB-58-0660	058 - Snagging and Remedials, Bldg. Internal	12	15-Nov-17	28-Nov-17																	
Roof Finishes																					
RAB-58-0540	058 - Install Railing - 152m	8	01-Nov-17	09-Nov-17																	
External Finishes																					
Facade																					
RAB-58-0470	058 - External Painting	18	01-Nov-17	21-Nov-17																	
RAB-58-0620	058 - Make good external surfaces	12	22-Nov-17	05-Dec-17																	
At Grade																					
RAB-58-6760	058 - Prepare Sub Grade	12	29-Nov-17	12-Dec-17																	
RAB-58-6750	058 - Laying Geo Textile	12	02-Dec-17	15-Dec-17																	
RAB-58-6770	058 - Lay Granular Sub-Base	12	06-Dec-17	19-Dec-17																	
RAB-58-6780	058 - Laying Course	12	09-Dec-17	22-Dec-17																	
RAB-58-6740	058 - Concrete Block Paving	12	13-Dec-17	28-Dec-17																	
RAB-58-6800	058 - Snagging and Remedials	12	22-Dec-17	08-Jan-18																	
Glazed Canopy																					
RAB-58-0600	058 - Construct high level canopy at +13.231mPD	24	02-Dec-17	02-Jan-18																	
Utilities and Drainage																					
RAB-58-7590	058 - Install FS Water main	12	01-Nov-17	14-Nov-17																	
RAB-58-7570	058 - Install Flushing Water Mains	12	15-Nov-17	28-Nov-17																	
RAB-58-7580	058 - Install Fresh Water Mains	12	15-Nov-17	28-Nov-17																	
Testing & Commissioning																					
RAB-TC58-1060	058 - T&C (HVAC, FS, P&D, OTHERS)	55	28-Sep-17 A	12-Oct-17 A																	
Statutory Submissions & Approvals (Day 470 Completion)																					
BBEO																					
RAB-BEE-450	058 - Registered Energy Assessor Inspection & Certification	6	04-Nov-17	10-Nov-17																	
RAB-BEE-460	058 - Submit REA Certification to EDMS	0	15-Nov-17																		
RAB-BEE-470	058 - EDMS Issue of Cert of Compliance Registration (COCR)	24	15-Nov-17	12-Dec-17																	
VAC (FSD)																					

█ Remaining Level of Effort
█ Actual Work
█ Critical Re...
█ Actual Level of Effort
█ Remaining Work
◊ Finish Con...

Date	Revision	Checked	Approved
01-Nov-17	3-Month Rolling Programme Stated 01 N...	SGJ	

Activity ID	Activity Name	Original Duration	Start	Finish	September 2017		October 2017				November 2017				December 2017				January 2018				
					17	24	01	08	15	22	29	05	12	19	26	03	10	17	24	31	07	14	
Commencement																							
Completion																							
RAB-FSD-370	058 - Submit Form 046 Part IV	0	01-Nov-17																				
RAB-FSD-100	058 - Submit Form 501 to FSD	0	18-Nov-17																				
RAB-FSD-500	058 - Submit Form 046 Part V	0	18-Nov-17																				
RAB-FSD-102	058 - FSD Inspection Period For Building 058	14	02-Dec-17	18-Dec-17																			
RAB-FSD-104	058 - Fire Certificate Obtained (Form 172) Handover For Building 058	0		18-Dec-17																			
Engineer (AECOM)																							
RAB-58-7490	058 - Submit Building 058 As Built Drawings to Engineer	0		12-Dec-17																			
Building 059 - Inbound X-Ray Scan Tunnel																							
Excavation																							
Raft Foundations																							
Structure																							
Walls																							
West																							
East																							
Roof Slabs																							
Cure and Strip																							
ABWF/E&M																							
Internal Finishes																							
Degree 1																							
Degree 2																							
Degree 3																							
RAB-59-0700	059 - Floor Finish (Epoxy Paint)	12	24-Jul-17 A	31-Oct-17 A																			
RAB-59-7550	059 - End Users and MoM handover inspection	0		01-Nov-17																			
RAB-59-7560	059 - Snagging and Remedials	12	01-Nov-17	14-Nov-17																			
Roof Finishes																							
RAB-59-0560	059 - Install Railing - 152m	8	16-Oct-17 A	31-Oct-17 A																			
External Finishes																							
Facade																							
RAB-59-0480	059 - External Painting	18	01-Nov-17	21-Nov-17																			
RAB-59-0650	059 - Make good external surfaces	12	08-Nov-17	21-Nov-17																			
At Grade																							
RAB-59-6700	059 - Prepare Sub Grade	6	22-Nov-17	28-Nov-17																			
RAB-59-6690	059 - Laying Geo Textile	6	25-Nov-17	01-Dec-17																			
RAB-59-6710	059 - Lay Granular Sub-Base	6	29-Nov-17	05-Dec-17																			
RAB-59-6720	059 - Laying Course	6	02-Dec-17	08-Dec-17																			
RAB-59-0670	059 - Snagging and Remedials	12	06-Dec-17	19-Dec-17																			
RAB-59-6680	059 - Concrete Block Paving	6	06-Dec-17	12-Dec-17																			
Glazed Canopy																							
RAB-59-0610	059 - Construct high level glazed canopy at +13.406mPD North	12	22-Nov-17	05-Dec-17																			
RAB-59-0620	059 - Construct high level glazed canopy at +13.231mPD South	12	29-Nov-17	12-Dec-17																			
Utilities and Drainage																							
RAB-59-7370	059 - Install FS Water Main	12	18-Sep-17 A	25-Sep-17 A																			
RAB-59-7350	059 - Install Flushing Water Mains	12	01-Nov-17	14-Nov-17																			
RAB-59-7360	059 - Install Fresh Water Mains	12	01-Nov-17	14-Nov-17																			
Testing & Commissioning																							
RAB-TC59-1000	059 - T&C (HVAC, FS, P&D, OTHERS)	30	15-Sep-17 A	30-Sep-17 A																			
Statutory Submissions & Approvals (Day 470 Completion)																							
BEO																							
RAB-BEE-480	059 - IRegistered Energy Assessor Inspection & Certification	6	01-Nov-17	07-Nov-17																			
RAB-BEE-490	059 - ISubmit REA Certification to EDMS	0	08-Nov-17																				
RAB-BEE-500	059 - IEDMS Issue of Cert of Compliance Registration (COCR)	24	08-Nov-17	05-Dec-17																			
VAC																							
RAB-FSD-560	059 - Submit Form 501	0	30-Sep-17 A																				

█ Remaining Level of Effort
█ Actual Work
█ Critical Re...
█ Actual Level of Effort
█ Remaining Work
◊ Finish Con...

Date	Revision	Checked	Approved
01-Nov-17	3-Month Rolling Programme Stated 01 N...	SGJ	

Activity ID	Activity Name	Original Duration	Start	Finish	September 2017		October 2017				November 2017				December 2017				January 2018				
					17	24	01	08	15	22	29	05	12	19	26	03	10	17	24	31	07	14	
Fire Services Department (FSD)																							
Commencement																							
Completion																							
Bldg. 059 Ready for FS Inspection (C8 Requirement)																							
RAB-FSD-760	059 - Submit Form 501 to FSD for FS Inspection For Building 059	0	20-Sep-17 A		◆																		
RAB-FSD-740	059 - FSD Inspection Period For Building 059	14	06-Oct-17 A	09-Oct-17 A																			
RAB-FSD-750	059 - Fire Certificate Obtained (Form 172) Handover For Building 059	0		01-Nov-17																			
Bldg. 059 for FS Inspection (Due to C3 Work Interface)																							
RAB-FSD-470	059 - Submit Form 501 to FSD for FS Inspection For Building 059	0	20-Sep-17 A		◆																		
RAB-FSD-480	059 - FSD Inspection Period For Building 059	14	06-Oct-17 A	09-Oct-17 A																			
RAB-FSD-490	059 - Fire Certificate Obtained (Form 172) Handover For Building 059	0		01-Nov-17																			
Engineer (AECOM)																							
RAB-59-7520	059 - Submit Building 059 As Built Drawings to Engineer	0		01-Nov-17																			
Bldg. 059 Ready for Engineer Inspection (C8 Requirement)																							
RAB-59-7570	059 - Engineer Inspection Period	14	08-Nov-17	23-Nov-17																			
RAB-59-7580	059 - Engineer Issue Occupation Permit	0		23-Nov-17																			
RAB-59-7590	KD2 - Projected Completion of Section II of the Works (470 days) Bu	0		23-Nov-17																			
Bldg. 059 Ready for Engineer Inspection (Due to C3 Work Interface)																							
RAB-59-7530	059 - Engineer Inspection Period	14	13-Dec-17	30-Dec-17																			
RAB-59-7540	059 - Engineer Issue Occupation Permit	0		30-Dec-17																			
RAB-KD24	KD2 - Projected Completion of Section II of the Works (470 days) Bu	0		30-Dec-17																			

█ Remaining Level of Effort
█ Actual Work
█ Critical Re...
█ Actual Level of Effort
█ Remaining Work
 Finish Con...

Date	Revision	Checked	Approved
01-Nov-17	3-Month Rolling Programme Stated 01 N...	SGJ	

Activity ID	Activity Name	2015			2016				2017				2018				2019		
		Q2	Q3	Q4	Q1	Q2	Q3	Q4	Q1	Q2	Q3	Q4	Q1	Q2	Q3	Q4	Q1	Q2	Q3
Hong Kong-Zhuhai_Macao Bridge Hong Kong Boundary Crossing F		<ul style="list-style-type: none"> Key Dates Interface Activities Site and Facility Inspection <ul style="list-style-type: none"> JS1200 Pre Site and Facility Inspection by Contractor at Location 4 - Deg2 JS1210 Joint Site and Facility Inspection with Interface Contractor at Location 4 - Deg2 JS1620 Pre Site and Facility Inspection by Contractor at Location 14 - Deg2 JS1630 Joint Site and Facility Inspection with Interface Contractor at Location 14 - Deg2 JS1760 Pre Site and Facility Inspection by Contractor at Location 18 - Deg1 JS1770 Joint Site and Facility Inspection with Interface Contractor at Location 18 - Deg1 JS1780 Pre Site and Facility Inspection by Contractor at Location 18 - Deg2 JS1790 Joint Site and Facility Inspection with Interface Contractor at Location 18 - Deg2 Access Dates <ul style="list-style-type: none"> AD1000 Location 1(PCB (001) Basement)-Deg1 (270d) AD1010 Location 1(PCB (001) Basement)-Deg2 (380d) AD1020 Location 1(PCB (001) ELV Room (Grid Line E3))-Deg1 (270d) AD1030 Location 1(PCB (001) ELV Room (Grid Line E3))-Deg2 (380d) AD1040 Location 2(PCB (001) First Floor Main Server Room)-Deg1 (330d) AD1050 Location 2(PCB (001) First Floor Main Server Room)-Deg2 (380d) AD1060 Location 2(PCB (001) First Floor Main Server Room) - For Server Installation - Deg2 (380d) AD1070 Location 2(PCB (001) Ground Floor ELV Room (Grid Line E3)) - Deg1 (330d) AD1080 Location 2(PCB (001) Ground Floor DOH Port Health Control Room (Grid Line BD5)) - Deg1 (330d) AD1090 Location 2(PCB (001) Ground Floor DOH Port Health Control Room (Grid Line BD5)) - Deg2 (380d) AD1130 Location 3(Inbd Cargo Exam Bldg (037) Platform Control Room)-Deg2 (500d) AD1150 Location 3(Inbd Cargo Exam Bldg (037) Inspector Offices 128,129,130,131,128,129,14) AD1170 Location 3a(Inbd Cargo Exam Bldg (037) ROCARS Room)-Deg2 (480d) AD1190 Location 3a(Inbd Cargo Exam Bldg (037) Main Server Room)-Deg2 (480d) AD1200 Location 3a(Inbd Cargo Exam Bldg (037) Main Server Room) - For Server installation - Deg2 (480d) AD1220 Location 4(Outbd Cargo Exam Bldg (023))-Deg2 (680d) AD1240 Location 4a(Outbd Cargo Exam Bldg (023))-Deg2 (630d) AD1270 Location 6(Common Utility Enclosure & Staff Subway)-Deg1 (400d) AD1290 Location 7(Common Utility Enclosure & Staff Subway)-Deg1 (270d) AD1300 Location 8(Inbd Private Car Annex (025))-Deg1 (430d) AD1310 Location 8(Inbd Private Car Annex (025))-Deg2 (580d) AD1320 Location 8(Inbd Private Car Annex (025) Canopy)-Deg1 (430d) AD1330 Location 8(Inbd Private Car Annex (025) Canopy)-Deg2 (580d) AD1340 Location 9(Outbd Private Car Annex (032))-Deg1 (520d) AD1350 Location 9(Outbd Private Car Annex (032))-Deg2 (660d) AD1360 Location 9(Outbd Private Car Annex (032) Canopy)-Deg1 (520d) AD1370 Location 9(Outbd Private Car Annex (032) Canopy)-Deg2 (660d) AD1501 Location 12(Inbd Private Car Kiosks(027))-Deg1 (400d) Phase 2 AD1510 Location 12(Inbd Private Car Kiosks(027))-Deg2 (480d) Phase 1 AD1511 Location 12(Inbd Private Car Kiosks(027))-Deg2 (480d) Phase 2 AD1521 Location 12(Inbd Private Car Kiosks(027) Canopy)-Deg1 (400d) Phase 2 																	

Programme No.: HZMB-DWP
Data Date: 14-Aug-15

- Actual Level of Effort
- Primary Baseline
- Actual Work
- Remaining Work
- Critical Remaining Work
- Baseline Milestone
- Milestone

▼ summary

Hong Kong-Zhuhai-Macao Bridge
Hong Kong Boundary Crossing
Facilities - Automatic Vehicle
Clearance Support System (AVCSS)

Date	Revision	Checked	Approved
14-Nov-16	Rev.: 0	WC	LC
10-Mar-17	Rev.: 1.0a	WC	LC
5-May-17	Rev.: 1.0b	WC	LC

Activity ID	Activity Name	2015			2016				2017				2018				2019		
		Q2	Q3	Q4	Q1	Q2	Q3	Q4	Q1	Q2	Q3	Q4	Q1	Q2	Q3	Q4	Q1	Q2	Q3
AD1530	Location 12(Inbd Private Car Kiosks(027) Canopy)-Deg2 (480d) Phase 1																		
AD1531	Location 12(Inbd Private Car Kiosks(027) Canopy)-Deg2 (480d) Phase 2																		
AD1540	Location 12(Inbd GV Kiosks (028))-Deg1 (400d) Phase 1																		
AD1541	Location 12(Inbd GV Kiosks (028))-Deg1 (400d) Phase 2																		
AD1550	Location 12(Inbd GV Kiosks (028))-Deg2 (480d) Phase 1																		
AD1551	Location 12(Inbd GV Kiosks (028))-Deg2 (480d) Phase 2																		
AD1560	Location 12(Inbd GV Kiosks (028) Canopy)-Deg1 (400d) Phase 1																		
AD1561	Location 12(Inbd GV Kiosks (028) Canopy)-Deg1 (400d) Phase 2																		
AD1570	Location 12(Inbd GV Kiosks (028) Canopy)-Deg2 (480d) Phase 1																		
AD1571	Location 12(Inbd GV Kiosks (028) Canopy)-Deg2 (480d) Phase 2																		
AD1580	Location 12(Outbd GV Kiosks (029))-Deg1 (400d) Phase 1																		
AD1581	Location 12(Outbd GV Kiosks (029))-Deg1 (400d) Phase 2																		
AD1590	Location 12(Outbd GV Kiosks (029))-Deg2 (480d) Phase 1																		
AD1591	Location 12(Outbd GV Kiosks (029))-Deg2 (480d) Phase 2																		
AD1600	Location 12(Outbd GV Kiosks (029) Canopy)-Deg1 (400d) Phase 1																		
AD1601	Location 12(Outbd GV Kiosks (029) Canopy)-Deg1 (400d) Phase 2																		
AD1610	Location 12(Outbd GV Kiosks (029) Canopy)-Deg2 (480d) Phase 1																		
AD1611	Location 12(Outbd GV Kiosks (029) Canopy)-Deg2 (480d) Phase 2																		
AD1620	Location 13(Outbd Private Car Kiosks (030))-Deg1 (480d) Phase 1																		
AD1630	Location 13(Outbd Private Car Kiosks (030))-Deg2 (550d) Phase 1																		
AD1640	Location 13(Outbd Private Car Kiosks (030) Canopy)-Deg1 (480d) Phase 1																		
AD1650	Location 13(Outbd Private Car Kiosks (030) Canopy)-Deg2 (550d) Phase 1																		
AD1660	Location 14(Future-Outbd/Inbd Private Car Kiosks)-Deg1 (610d)																		
AD1670	Location 14(Future-Outbd/Inbd Private Car Kiosks)-Deg2 (680d)																		
AD1700	Location 16(Outbd Traffic Control Kiosk (101))-Deg1 (400d)																		
AD1710	Location 16(Outbd Traffic Control Kiosk (101))-Deg2 (480d)																		
AD1740	Location 18(Outbd Private Car Exam Bldg(024))-Deg1 (-)																		
AD1750	Location 18(Outbd Private Car Exam Bldg(024))-Deg2 (670d)																		
AD1780	(by C03) Underground Ducting (UUD1.1) between CUE and Inbd Cargo Exam Bldg (0																		
AD1790	(by C03) (UUD1.2) between Inbd Cargo Exam Bldg South (037[S]) and DOH Cargo C																		
AD1800	(by C03) (UUD2) between Inbd Cargo Exam Bldg North (037[N]) and Inbd Vehicle Cle																		
AD1810	(by C03) (UUD9.1) btw Inbd Cargo Exam Bldg S.(037[S]) & Inbd PC Exam Bldg(033) &																		
AD1820	(by C03) (UUD9.3) between Inbd Private Car Exam Bldg (033) and Inbd Vehicle Clear																		
AD1830	(by C03) (UUD9.2) between Inbd Private Car Exam Bldg (033) and Inbd Vehicle Clear																		
AD1840	(by C03) Underground Ducting (UUD3.1) between CUE to Outbd Cargo Exam Bldg (0																		
AD1850	(by C03) (UUD3.2) btw Outbd Car Exam Bldg (023) and Outbd PC Exam Bldg (024) a																		
AD1860	(byC03) (UUD4.1) between Outbd Private Car Exam Bldg (024) and Outbd Vehicle Cle																		
AD1870	(byC03) (UUD5) between Outbd Car Exam Bldg South (023[S]) and Outbd Vehicle Cle																		
AD1880	(by C03) Underground Ducting (UUD8) between CUE and Outbd PCA (032)																		
AD1910	(by C03) Inbound Vehicle Clearance Plaza																		
AD1920	(by C03) Outbound Vehicle Clearance Plaza																		
Interfaces Provisions Mobilization Provisions WA4 Site Erection & Servicing																			

Programme No.: HZMB-DWP Data Date: 14-Aug-15		Hong Kong-Zhuhai-Macao Bridge Hong Kong Boundary Crossing Facilities - Automatic Vehicle Clearance Support System (AVCSS)	Date	Revision	Checked	Approved
			14-Nov-16	Rev.: 0	WC	LC
			10-Mar-17	Rev.: 1.0a	WC	LC
			5-May-17	Rev.: 1.0b	WC	LC

12-Aug-17, Interfaces Provisions
 22-Oct-17, Mobilization Provisions

Activity ID	Activity Name	2015		2016				2017				2018				2019		
		Q2	Q3	Q1	Q2	Q3	Q4	Q1	Q2	Q3	Q4	Q1	Q2	Q3	Q4	Q1	Q2	Q3
<ul style="list-style-type: none"> Detailed Design Specification Construction Design and Management Supply/Manufacture Mock-up items Supply/Manufacture prototypes Software Design, Coding and Testing <ul style="list-style-type: none"> Coding Software System Integration Prototype & Software Simulation Tests Procurement - Phase 1 / Section I Supply/Manufacture products for FAT Factory Acceptance Test (FAT) Supply/Manufacture Equipment Delivery and Bench Acceptance Test for Phase 1/ Section I Installation - Phase 1 / Section I <ul style="list-style-type: none"> Location 1(PCB (001) Basement) <ul style="list-style-type: none"> EM1920 L1(001)B/F - Cable Laying and termination at Location 1 and Location 2 Location 1(PCB (001) ELV Room (Grid Line E3)) <ul style="list-style-type: none"> EM1940 L1(001)ELV Rm - Cable Laying and termination at Location 1 and Location 2 Location 2(PCB (001) Ground Floor ELV Room (Grid Line E3)) <ul style="list-style-type: none"> EM1960 L2(001)ELV Rm - Cable Laying and termination at Location 1 and Location 2 Location 2(PCB (001) Ground Floor DOH Port Health Control Room (Grid Line BD5)) <ul style="list-style-type: none"> EM1080 L2(001)Heath Ctrl Rm - Cable Laying and termination at Location 1 and Location 2 EM1100 L2(001)Heath Ctrl Rm - Cable Splicing and Testing and Labeling EM1120 L2(001)Health Ctrl Rm - Intercom and PA system Installation EM1140 L2(001)Heath Ctrl Rm - Intercom and PA system tuning Location 2(PCB (001) First Floor Main Server Room) <ul style="list-style-type: none"> EM1000 L2(001)Main Server Rm - Cable Laying and termination at Location 1 and Location 2 EM1020 L2(001)Main Server Rm - Cable Splicing and Testing and Labeling EM1040 L2(001)Main Server Rm - AVCSS Network and Server Installation EM1060 L2(001)Main Server Rm - AVCSS Network and Server Tuning Location 3(Inbd Cargo Exam Bldg (037) MDF Room) Location 3(Inbd Cargo Exam Bldg (037) ELV Room) Location 3(Inbd Cargo Exam Bldg (037) Inspector Offices 128,129,130,131,128,129,141) <ul style="list-style-type: none"> EM2020 L3(037)Inspec Offices - Cable Laying and termination in Location 3 and Location 3a EM2040 L3(037)Inspec Offices - Cable Splicing and Testing and Labeling EM2060 L3(037)Inspec Offices - AVCSS SURCON WS and 55" LCD Installation EM2080 L3(037)Inspec Offices - VTS WS Installation EM2100 L3(037)Inspec Offices - SURCON and WS Tuning Location 3(Inbd Cargo Exam Bldg (037) Platform Control Room) <ul style="list-style-type: none"> EM1160 L3(037)PLF Ctrl Rm - Cable Laying and termination in Location 3 and Location 3a EM1180 L3(037)PLF Ctrl Rm - Cable Splicing and Testing and Labeling EM1200 L3(037)PLF Ctrl Rm - AVCSS SYSCON WS and 55" TV Wall Installation EM1220 L3(037)PLF Ctrl Rm - AVCSS SYSCON WS Tuning 		<p>01-Sep-17; Installation - Phase 1 / Section I</p> <p>22-Jun-17; Location:1(PCB (001);Basement)</p> <p>L1(001)B/F - Cable Laying and termination at Location</p> <p>22-Jun-17; Location:1(PCB (001);ELV Room (Grid Line</p> <p>L1(001)ELV Rm - Cable Laying and termination at Loca</p> <p>22-Jun-17; Location:2(PCB (001);Ground Floor ELV R</p> <p>L2(001)ELV Rm - Cable Laying and termination at Loca</p> <p>18-Aug-17; Location:2(PCB (001);Ground Floor DO</p> <p>L2(001)Heath Ctrl Rm - Cable Laying and termination</p> <p>L2(001)Heath Ctrl Rm - Cable Splicing and Testing and</p> <p>L2(001)Health Ctrl Rm - Intercom and PA system In</p> <p>L2(001)Health Ctrl Rm - Intercom and PA system tu</p> <p>21-Aug-17; Location:2(PCB (001); First Floor Main</p> <p>L2(001)Main Server Rm - Cable Laying and termination</p> <p>L2(001)Main Server Rm - Cable Splicing and Testing</p> <p>L2(001)Main Server Rm - AVCSS Network and Ser</p> <p>L2(001)Main Server Rm - AVCSS Network and Se</p> <p>07-Aug-17; Location 3(Inbd Cargo Exam Bldg (037)</p> <p>L3(037)Inspec Offices - Cable Laying and termination in</p> <p>L3(037)Inspec Offices - Cable Splicing and Testing and</p> <p>L3(037)Inspec Offices - AVCSS SURCON WS and 5</p> <p>L3(037)Inspec Offices - VTS WS Installation</p> <p>L3(037)Inspec Offices - SURCON and WS Tuning</p> <p>07-Aug-17; Location 3(Inbd Cargo Exam Bldg (037)</p> <p>L3(037)PLF Ctrl Rm - Cable Laying and termination in</p> <p>L3(037)PLF Ctrl Rm - Cable Splicing and Testing and</p> <p>L3(037)PLF Ctrl Rm - AVCSS SYSCON WS and 55</p> <p>L3(037)PLF Ctrl Rm - AVCSS SYSCON WS Tuning</p>																

Programme No.: HZMB-DWP
Data Date: 14-Aug-15

- Actual Level of Effort
- Primary Baseline
- Actual Work
- Remaining Work
- Critical Remaining Work
- Baseline Milestone
- Milestone

Hong Kong-Zhuhai-Macao Bridge
Hong Kong Boundary Crossing
Facilities - Automatic Vehicle
Clearance Support System (AVCSS)

Date	Revision	Checked	Approved
14-Nov-16	Rev.: 0	WC	LC
10-Mar-17	Rev.: 1.0a	WC	LC
5-May-17	Rev.: 1.0b	WC	LC

Activity ID	Activity Name	2015			2016				2017				2018				2019		
		Q2	Q3	Q4	Q1	Q2	Q3	Q4	Q1	Q2	Q3	Q4	Q1	Q2	Q3	Q4	Q1	Q2	Q3
Location 3a(Inbd Cargo Exam Bldg (037) ROCARS Room)		<ul style="list-style-type: none"> EM1240 L3a(037) ROCARS Rm - Cable Laying and termination in Location 3 and Location 3a EM1260 L3a(037) ROCARS Rm - Cable Splicing and Testing and Labeling EM1280 L3a(037) ROCARS Rm - AVCSS SYSCON and SURCON and Intercom Installation EM1300 L3a(037) ROCARS Rm - VTS WS Installation EM1320 L3a(037) ROCARS Rm - VID WS Installation EM1340 L3a(037) ROCARS Rm - SURCON and SYSCON and WS Tuning 																	
Location 3a(Inbd Cargo Exam Bldg (037) Main Server Room)		<ul style="list-style-type: none"> EM2120 L3a(037)Main Server Rm - Cable Laying and termination in Location 3 and Location 3a EM2140 L3a(037)Main Server Rm - Cable Splicing and Testing and Labeling EM2160 L3a(037)Main Server Rm - AVCSS Server Installation EM2180 L3a(037)Main Server Rm - VTS Server Installation EM2200 L3a(037)Main Server Rm - Servers Tuning 																	
Location 4(Outbd Cargo Exam Bldg (023) MDF Room)		<ul style="list-style-type: none"> EM2240 L4a(023)ROCARS Rm - Cable Splicing and Testing and Labeling EM2260 L4a(023)ROCARS Rm - AVCSS SYSCON and SURCON and Intercom Installation EM2280 L4a(023)ROCARS Rm - VTS WS Installation EM2300 L4a(023)ROCARS Rm - SYSCON and SURCON and WS Tuning 																	
Location 4a(Outbd Cargo Exam Bldg (023) ROCARS Room)		<ul style="list-style-type: none"> EM2240 L4a(023)ROCARS Rm - Cable Splicing and Testing and Labeling EM2260 L4a(023)ROCARS Rm - AVCSS SYSCON and SURCON and Intercom Installation EM2280 L4a(023)ROCARS Rm - VTS WS Installation EM2300 L4a(023)ROCARS Rm - SYSCON and SURCON and WS Tuning 																	
Location 5(Common Utility Enclosure & Staff Subway)		<ul style="list-style-type: none"> EM2341 L5(CUE) - Cable Laying between Location 5 and Location 6 EM2361 L5(CUE) - Cable Laying between Location 5 and Location 7 EM2380 L5(CUE) - Cable Splicing and Testing and Labeling 																	
Location 6(Common Utility Enclosure & Staff Subway)		<ul style="list-style-type: none"> EM2400 L6(CUE) - Cable Laying between Location 5 and Location 6 EM2420 L6(CUE) - Cable Splicing and Testing and Labeling 																	
Location 7(Common Utility Enclosure & Staff Subway)		<ul style="list-style-type: none"> EM2440 L7(CUE) - Cable Laying between Location 5 and Location 7 EM2460 L7(CUE) - Cable Splicing and Testing and Labeling 																	
Location 12(Inbd Private Car Kiosks,GV Kiosks (027,028,029))		<ul style="list-style-type: none"> Inbd Private Car Kiosks(027) - 9 nos (Phase 1) <ul style="list-style-type: none"> EM1500 L12(027)(9nos P1) - Cable Splicing and Testing and Labeling EM1520 L12(027)(9nos P1) - AVCSS/MOM Kiosk Equipment Installation (9 nos) EM1541 L12(027)(9nos P1) - XDB installation (18 nos) EM1542 L12(027)(9nos P1) - ODB installation (5 nos) EM1543 L12(027)(9nos P1) - ODB installation (2 nos) EM1544 L12(027)(9nos P1) - ODB installation (2 nos) EM1560 L12(027)(9nos P1) - Loop installation (45 nos) Inbd Goods Vehicle Kiosks(028) - 5 nos (Phase 1) <ul style="list-style-type: none"> EM1620 L12(028)(5nos P1) - Cable Laying and termination EM1640 L12(028)(5nos P1) - Cable Splicing and Testing and Labeling EM1660 L12(028)(5nos P1) - AVCSS/MOM Kiosk Equipment Installation (5 nos) EM1681 L12(028)(5nos P1) - XDB installation (10 nos) EM1682 L12(028)(5nos P1) - ODB installation (3 nos) EM1683 L12(028)(5nos P1) - ODB installation (2 nos) 																	

Programme No.: HZMB-DWP
Data Date: 14-Aug-15

- Actual Level of Effort
- Primary Baseline
- Actual Work
- Remaining Work
- Critical Remaining Work
- Baseline Milestone
- Milestone

summary

Hong Kong-Zhuhai-Macao Bridge
Hong Kong Boundary Crossing
Facilities - Automatic Vehicle
Clearance Support System (AVCSS)

Date	Revision	Checked	Approved
14-Nov-16	Rev.: 0	WC	LC
10-Mar-17	Rev.: 1.0a	WC	LC
5-May-17	Rev.: 1.0b	WC	LC

Activity ID	Activity Name	2015			2016				2017				2018				2019		
		Q2	Q3	Q4	Q1	Q2	Q3	Q4	Q1	Q2	Q3	Q4	Q1	Q2	Q3	Q4	Q1	Q2	Q3
Outbd Vehicle Clearance Plaza - 8 nos VID, 6 nos VTS, 4 nos TLS		<ul style="list-style-type: none"> EM3160 Outbound VID cabling from pillar box to VID field equipment EM3180 Outbound VTS cabling from pillar box to VTS field equipment EM3200 Outbound TLS cabling from pillar box to TLS field equipment EM3220 Outbound VID field equipment installation (8 VID) EM3240 Outbound VTS field equipment installation (3 RFID + 3 Cameras) EM3260 Outbound TLS field equipment installation (4 TLS) EM3280 Outbound VID and VTS and TLS field equipment tuning 																	
Underground Ducting (UUD1.1) between CUE and Inbd Cargo Exam Bldg (037)		<ul style="list-style-type: none"> UD1000 (UUD1.1 [CUE-037]) - Cable laying and termination 																	
(UUD1.2) between Inbd Cargo Exam Bldg South (037[S]) and DOH Cargo Clearance Bldg (037[S])		<ul style="list-style-type: none"> UD1060 (UUD1.2 [037[S]-043]) - Cable laying and termination 																	
Underground Ducting (UUD6) between CUE and Shuttle Bus Kiosk (006) and Inbd Private Car Exam Bldg (033)		<ul style="list-style-type: none"> UD1040 (UUD9.1 [037[S]-033-100]) - Cable laying and termination 																	
(UUD9.1) btw IB Cargo Exam Bldg South(037[S]) & IB PC Exam Bldg(033) & IB Traffic Control Bldg (033)		<ul style="list-style-type: none"> UD1010 (UUD2 [037[N]-IB VCP]) - Cable laying and termination 																	
(UUD2) between Inbd Cargo Exam Bldg North (037[N]) to Inbd VCP		<ul style="list-style-type: none"> UD1070 (UUD9.3 [033-IB VCP[W]]) - Cable laying and termination 																	
(UUD9.3) between Inbd Private Car Exam Bldg (033) and Inbd Vehicle Clearance Plaza		<ul style="list-style-type: none"> UD1020 (UUD9.2 [033-IB VCP[E]]) - Cable laying and termination 																	
(UUD9.2) between Inbd Private Car Exam Bldg (033) and Inbd Vehicle Clearance Plaza		<ul style="list-style-type: none"> UD1030 (UUD3.1 [CUE-023]) - Cable laying and termination 																	
Underground Ducting (UUD7) between PCB(001) and Inbd Coach Kiosks(010)		<ul style="list-style-type: none"> UD1050 (UUD3.2 [023-024-101]) - Cable laying and termination 																	
Underground Ducting (UUD3.1) between CUE and Outbd Cargo Exam Bldg (023)		<ul style="list-style-type: none"> UD1100 (UUD8 [CUE-032]) - Cable laying and termination 																	
(UUD3.2) btw OB Car Exam Bldg(023) & OB PC Exam Bldg(024) & OB Traffic Control Bldg (023)		<ul style="list-style-type: none"> UD1080 (UUD4.1 [024-OB VCP]) - Cable laying and termination 																	
Underground Ducting (UUD8) between CUE and Outbd PCA (032)		<ul style="list-style-type: none"> UD1090 (UUD5 [023[S]-OB VCP]) - Cable laying and termination 																	
(UUD4.1) between Outbd PC Exam Bldg (024) and Outbd Vehicle Clearance Plaza		<ul style="list-style-type: none"> UD1080 (UUD4.1 [024-OB VCP]) - Cable laying and termination 																	
(UUD5) between Outbd Car Exam Bldg (023[S]) and Outbd Vehicle Clearance Plaza		<ul style="list-style-type: none"> UD1090 (UUD5 [023[S]-OB VCP]) - Cable laying and termination 																	
Initial On-Site Test and Commissioning / Pre-SAT (Phase 1 / Section I)		<ul style="list-style-type: none"> Site Acceptance Test (Phase 1 / Section I) Security Risk Assessment and Audit Operability Period Test (Phase 1 / Section I) Completion (Phase 1 /Section I) Training and Document (Phase 1 /Section I) Operation (Phase 1 /Section I) Engineering Support for Phase 1 / Section I Procurement - Phase 2 / Section II Delivery and Bench Acceptance Test for Phase 2/Section II Installation - Phase 2 / Section II 																	


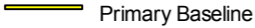
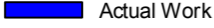

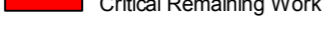


Programme No.: HZMB-DWP Data Date: 14-Aug-15		Hong Kong-Zhuhai-Macao Bridge Hong Kong Boundary Crossing Facilities - Automatic Vehicle Clearance Support System (AVCSS)	Date	Revision	Checked	Approved
			14-Nov-16	Rev.: 0	WC	LC
			10-Mar-17	Rev.: 1.0a	WC	LC
			5-May-17	Rev.: 1.0b	WC	LC

Activity ID	Activity Name	2015			2016				2017				2018				2019		
		Q2	Q3	Q4	Q1	Q2	Q3	Q4	Q1	Q2	Q3	Q4	Q1	Q2	Q3	Q4	Q1	Q2	Q3
Location 8(Inbd Private Car Annex (025)) (Phase 2)		▼ 30-Aug-17; Location 8(Inbd Private Car Annex (025)) (Phase 2)																	
EM3370	L8(025) - Cable Containment in Kiosks	■ L8(025) - Cable Containment in Kiosks																	
EM3380	L8(025) - Cable Laying and termination	■ L8(025) - Cable Laying and termination																	
EM3400	L8(025) - Cable Splicing and Testing and Labeling	■ L8(025) - Cable Splicing and Testing and Labeling																	
Location 9(Outbd Private Car Annex (032)) (Phase 2)		▼ 30-Aug-17; Location 9(Outbd Private Car Annex (032)) (Phase 2)																	
EM3500	L9(032) - Cable Containment in Kiosks	■ L9(032) - Cable Containment in Kiosks																	
EM3520	L9(032) - Cable Laying and termination	■ L9(032) - Cable Laying and termination																	
Initial On-Site Test and Commissioning / Pre-SAT (Phase 2 / Section II)																			
Site Acceptance Test (Phase 2 / Section II)																			
Operability Period Test (Phase 2 / Section II)																			
Completion (Phase 2 / Section II)																			
Engineering Support for Phase 2 / Section II																			
Procurement for Phase2 / Section III																			
Delivery and Bench Acceptance Test for Phase2 / Section III																			
Installation - Phase 2 / Section III		▼ 09-Oct-17; Installation - Phase 2/ Section III																	
Location 10,11,12,13 (Vehicle Clearance Kiosks)		▼ 09-Oct-17; Location 10,11,12,13 (Vehicle Clearance Kiosks)																	
Location 12 Inbd Private Car Kiosks (027) - 12 nos (Phase 2)		▼ 09-Oct-17; Location 12 Inbd Private Car Kiosks																	
EM4440	L12(027)(12nos P2) - Cable Laying and termination	■ L12(027)(12nos P2) - Cable Laying and termination																	
EM4460	L12(027)(12nos P2) - Cable Splicing and Testing and Labeling	■ L12(027)(12nos P2) - Cable Splicing and Testing and Labeling																	
EM4480	L12(027)(12nos P2) - AVCSS/DOH/MOM Kiosk Equipment Installation (12 nos)	■ L12(027)(12nos P2) - AVCSS/DOH/MOM Kiosk Equipment Installation (12 nos)																	
Location 13 Outbd Private Car Kiosks (030) - 12 nos (Phase 2)		▼ 01-Sep-17; Location 13 Outbd Private Car Kiosks																	
EM4560	L13(030)(12nos P2) - Cable Containment in Kiosks	■ L13(030)(12nos P2) - Cable Containment in Kiosks																	
Location 12 Outbd Goods Vehicle Kiosks (029) - 3 nos (Phase 2)		▼ 31-Aug-17; Location 12 Outbd Goods Vehicle Kiosks																	
EM4880	L12(029)(3nos P2) - Cable Laying and termination	■ L12(029)(3nos P2) - Cable Laying and termination																	
EM4900	L12(029)(3nos P2) - Cable Splicing and Testing and Labeling	■ L12(029)(3nos P2) - Cable Splicing and Testing and Labeling																	
EM4920	L12(029)(3nos P2) - AVCSS/DOH/MOM Kiosk Equipment Installation (3 nos)	■ L12(029)(3nos P2) - AVCSS/DOH/MOM Kiosk Equipment Installation (3 nos)																	
EM4940	L12(029)(3nos P2) - ODB & XDB Installation (3 nos)	■ L12(029)(3nos P2) - ODB & XDB Installation (3 nos)																	
EM4960	L12(029)(3nos P2) - AIOP Installation (3 nos)	■ L12(029)(3nos P2) - AIOP Installation (3 nos)																	
EM4980	L12(029)(3nos P2) - Loop Installation (15 nos)	■ L12(029)(3nos P2) - Loop Installation (15 nos)																	
Location 11 Outbd Coach Kiosks (009) - 4 nos (Phase 2)																			
Location 12 Inbd Goods Vehicle Kiosks (028) - 3 nos (Phase 2)		▼ 24-Aug-17; Location 12 Inbd Goods Vehicle Kiosks																	
EM4720	L12(028)(3nos P2) - Cable Laying and termination	■ L12(028)(3nos P2) - Cable Laying and termination																	
EM4740	L12(028)(3nos P2) - Cable Splicing and Testing and Labeling	■ L12(028)(3nos P2) - Cable Splicing and Testing and Labeling																	
EM4760	L12(028)(3nos P2) - AVCSS/DOH/MOM Kiosk Equipment Installation (3 nos)	■ L12(028)(3nos P2) - AVCSS/DOH/MOM Kiosk Equipment Installation (3 nos)																	
EM4780	L12(028)(3nos P2) - ODB & XDB Installation (3 nos)	■ L12(028)(3nos P2) - ODB & XDB Installation (3 nos)																	
EM4800	L12(028)(3nos P2) - AIOP Installation (3 nos)	■ L12(028)(3nos P2) - AIOP Installation (3 nos)																	
EM4820	L12(028)(3nos P2) - Loop Installation (15 nos)	■ L12(028)(3nos P2) - Loop Installation (15 nos)																	
EM4840	L12(028)(3nos P2) - Kiosk Equipment Configuration (3 nos)	■ L12(028)(3nos P2) - Kiosk Equipment Configuration (3 nos)																	
EM5120	L12(028)(3nos P2) - Inbd Goods Vehicle Kiosks Installation Complete	◆ L12(028)(3nos P2) - Inbd Goods Vehicle Kiosks Installation Complete																	
Location 10 Shuttle Bus Kiosks (006) - 4 nos (Phase 2)		▼ 30-Aug-17; Location 10 Shuttle Bus Kiosks (006) -																	
EM4000	L10(006)(4nos P2) - Cable Containment in Kiosks	■ L10(006)(4nos P2) - Cable Containment in Kiosks																	
Location 11 Inbd Coach Kiosks (010) - 2 nos (Phase 2)-1																			
Location 11 Inbd Coach Kiosks (010) - 2 nos (Phase 2)-2																			
Initial On-Site Test and Commissioning / Pre-SAT (Phase 2 / Section III)																			

Programme No.: HZMB-DWP Data Date: 14-Aug-15		Hong Kong-Zhuhai-Macao Bridge Hong Kong Boundary Crossing Facilities - Automatic Vehicle Clearance Support System (AVCSS)	Date	Revision	Checked	Approved
			14-Nov-16	Rev.: 0	WC	LC
			10-Mar-17	Rev.: 1.0a	WC	LC
			5-May-17	Rev.: 1.0b	WC	LC

Activity ID	Activity Name	2015			2016				2017				2018				2019			
		Q2	Q3	Q4	Q1	Q2	Q3	Q4	Q1	Q2	Q3	Q4	Q1	Q2	Q3	Q4	Q1	Q2	Q3	
	Site Acceptance Test (Phase 2 / Section III)																			
	Operability Period Test (Phase 2 / Section III)																			
	Completion (Phase 2 / Section III)																			
	Operation (Phase 2 / Section III)																			
	Defect Liability Period (DLP)																			
	Document Submission (Phase 2 / Section III)																			

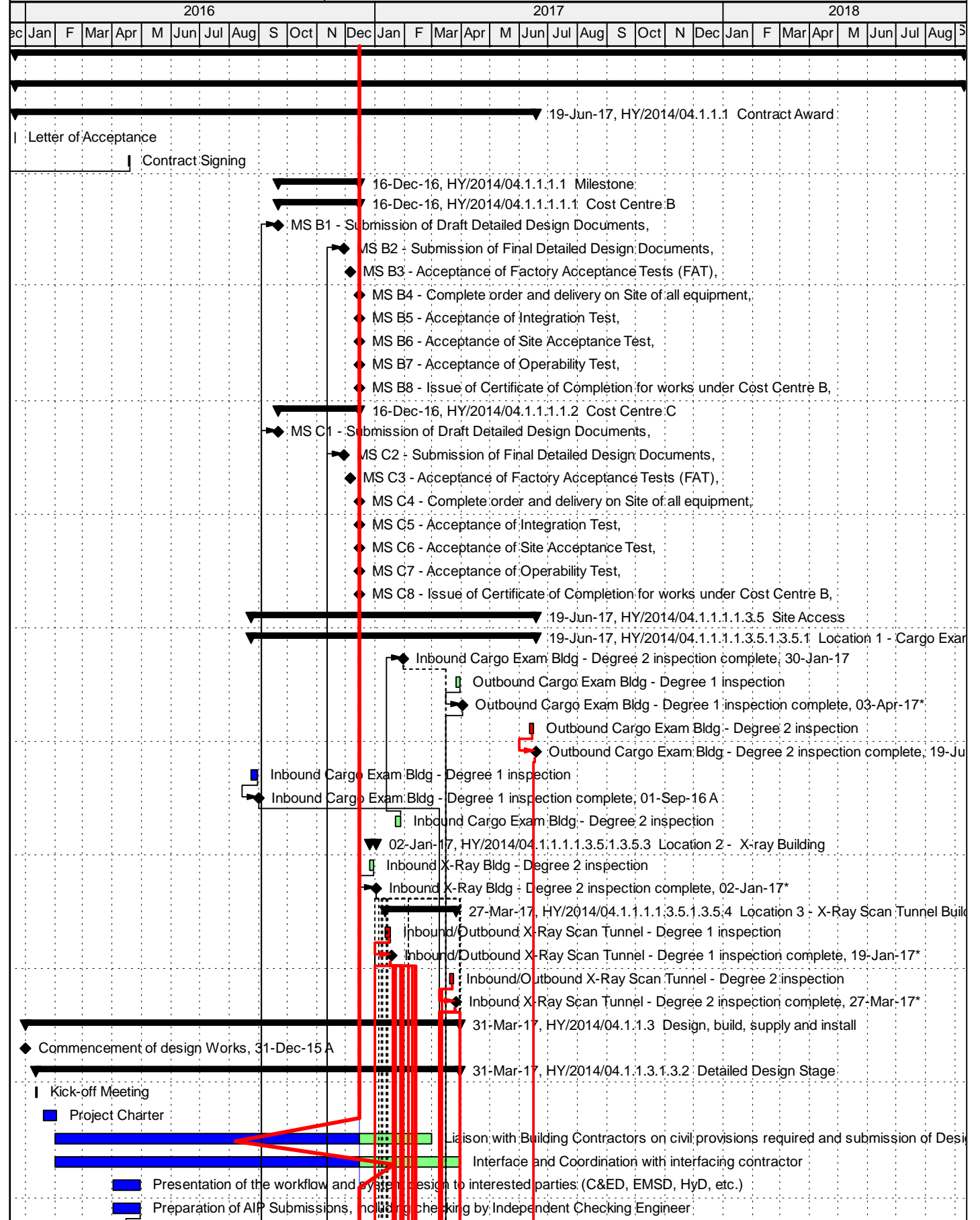
Programme No.: HZMB-DWP
Data Date: 14-Aug-15

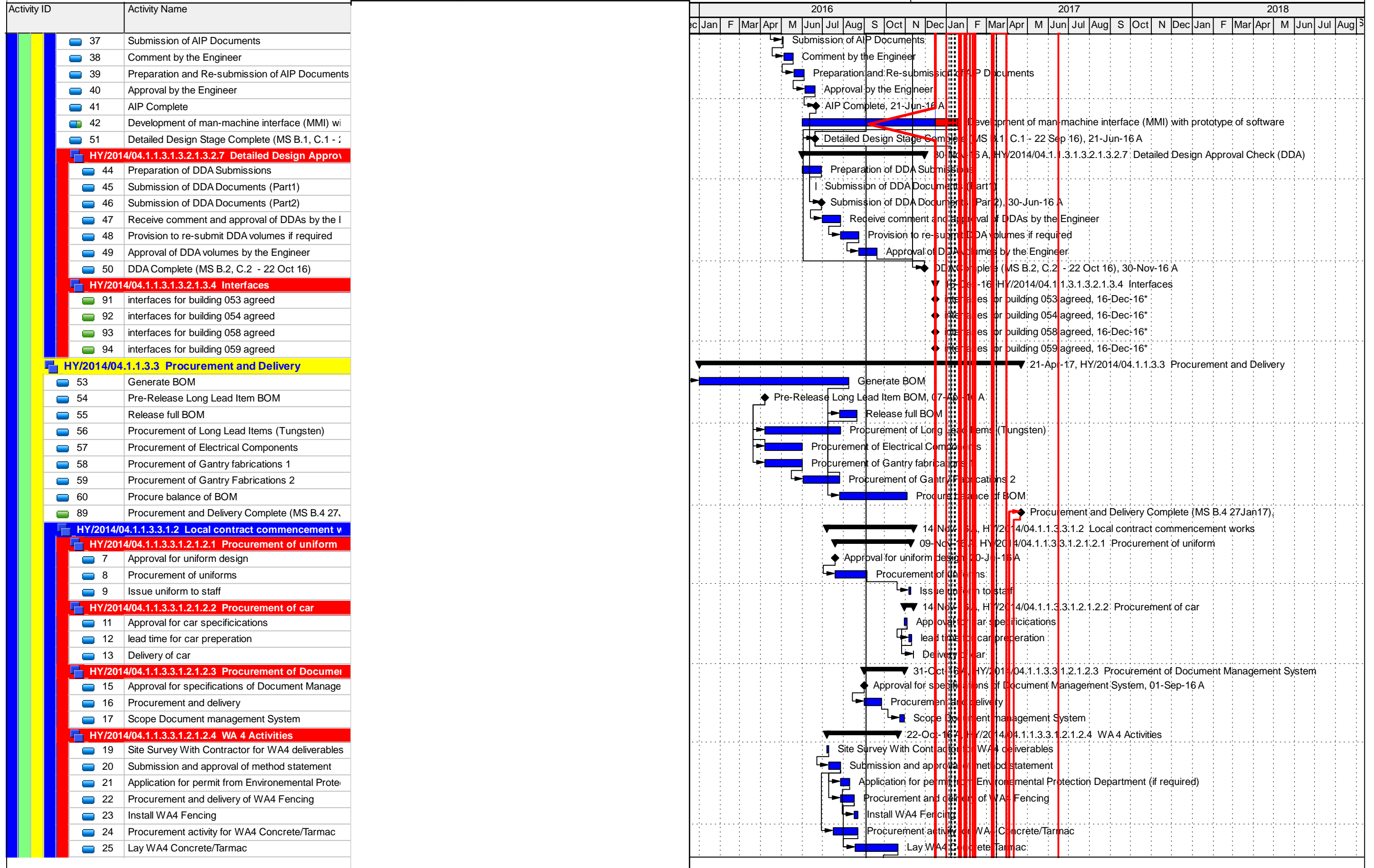
-  Actual Level of Effort
-  Primary Baseline
-  Actual Work
-  Remaining Work
-  Critical Remaining Work
-  Baseline Milestone
-  Milestone

Hong Kong-Zhuhai-Macao Bridge
Hong Kong Boundary Crossing
Facilities - Automatic Vehicle
Clearance Support System (AVCSS)

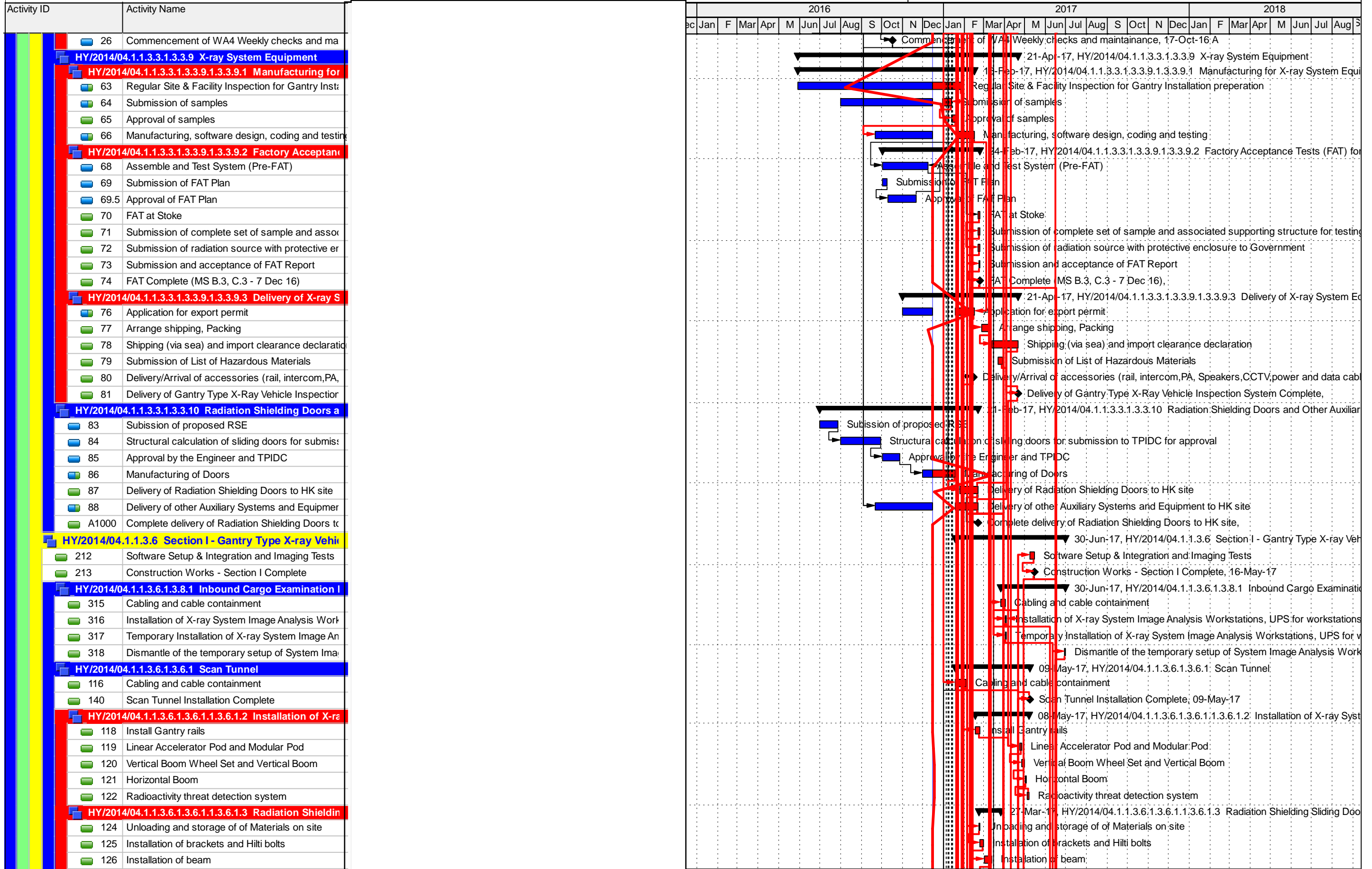
Date	Revision	Checked	Approved
14-Nov-16	Rev.: 0	WC	LC
10-Mar-17	Rev.: 1.0a	WC	LC
5-May-17	Rev.: 1.0b	WC	LC

Activity ID	Activity Name
HY/2014/04 Hong Kong-Zhuhai-Macao Bridge	
HY/2014/04.1 Contract No. HY/2014/04 Hong Kong-Zhuhai-Macao Bridge	
HY/2014/04.1.1.1 Contract Award	
3	Letter of Acceptance
4	Contract Signing
HY/2014/04.1.1.1.1 Milestone	
HY/2014/04.1.1.1.1.1 Cost Centre B	
A1C	MS B1 - Submission of Draft Detailed Design Documents
A1C	MS B2 - Submission of Final Detailed Design Documents
A1C	MS B3 - Acceptance of Factory Acceptance Tests (FAT)
A1C	MS B4 - Complete order and delivery on Site of all equipment
A1C	MS B5 - Acceptance of Integration Test
A1C	MS B6 - Acceptance of Site Acceptance Test
A1C	MS B7 - Acceptance of Operability Test
A1C	MS B8 - Issue of Certificate of Completion for works under Cost Centre B
HY/2014/04.1.1.1.1.2 Cost Centre C	
A1C	MS C1 - Submission of Draft Detailed Design Documents
A11	MS C2 - Submission of Final Detailed Design Documents
A11	MS C3 - Acceptance of Factory Acceptance Tests (FAT)
A11	MS C4 - Complete order and delivery on Site of all equipment
A11	MS C5 - Acceptance of Integration Test
A11	MS C6 - Acceptance of Site Acceptance Test
A11	MS C7 - Acceptance of Operability Test
A11	MS C8 - Issue of Certificate of Completion for works under Cost Centre C
HY/2014/04.1.1.1.3.5 Site Access	
HY/2014/04.1.1.1.3.5.1.3.5.1 Location 1 - Cargo Exam Bldg - Degree 1 inspection	
100	Inbound Cargo Exam Bldg - Degree 2 inspection
102	Outbound Cargo Exam Bldg - Degree 1 inspection
103	Outbound Cargo Exam Bldg - Degree 1 inspection
104	Outbound Cargo Exam Bldg - Degree 2 inspection
105	Outbound Cargo Exam Bldg - Degree 2 inspection
97	Inbound Cargo Exam Bldg - Degree 1 inspection
98	Inbound Cargo Exam Bldg - Degree 1 inspection
99	Inbound Cargo Exam Bldg - Degree 2 inspection
HY/2014/04.1.1.1.3.5.1.3.5.3 Location 2 - X-ray Building	
107	Inbound X-Ray Bldg - Degree 2 inspection
108	Inbound X-Ray Bldg - Degree 2 inspection complete
HY/2014/04.1.1.1.3.5.1.3.5.4 Location 3 - X-Ray Scan Tunnel Building	
110	Inbound/Outbound X-Ray Scan Tunnel - Degree 1 inspection
111	Inbound/Outbound X-Ray Scan Tunnel - Degree 1 inspection
112	Inbound/Outbound X-Ray Scan Tunnel - Degree 2 inspection
113	Inbound X-Ray Scan Tunnel - Degree 2 inspection
HY/2014/04.1.1.3 Design, build, supply and install	
28	Commencement of design Works
HY/2014/04.1.1.3.1.3.2 Detailed Design Stage	
30	Kick-off Meeting
31	Project Charter
32	Liaison with Building Contractors on civil provisions required and submission of Design
33	Interface and Coordination with interfacing contractor
35	Presentation of the workflow and system design to interested parties (C&ED, EMSD, HyD, etc.)
36	Preparation of AIP Submissions, including check





■ Actual Level of Effort
 ■ Remaining Work
 ■ Critical Remaining Work
 ◆ Milestone
 ▼ summary



█ Actual Level of Effort
█ Remaining Work
◆ Milestone
▶ summary
█ Actual Work
█ Critical Remaining Work
▶ summary

Activity ID	Activity Name	2016												2017												2018																						
		Dec	Jan	F	Mar	Apr	M	Jun	Jul	Aug	S	Oct	N	Dec	Jan	F	Mar	Apr	M	Jun	Jul	Aug	S	Oct	N	Dec	Jan	F	Mar	Apr	M	Jun	Jul	Aug	S													
	<ul style="list-style-type: none"> ☑ X-ray System Image Analysis Workstation ☑ Radiation shielding sliding door controller ☑ CCTV System ☑ Public Address System ☑ UPS for workstations, equipment and system 📁 HY/2014/04.1.1.3.7.1.3.7.2.1.3.7.2.2.1.3.7.2.2.4 Image Interpretation ☑ Intercom System ☑ Radiation Monitoring and Alarm System ☑ X-ray System Image Analysis Workstation ☑ Printer ☑ UPS for workstations, equipment and system 📁 HY/2014/04.1.1.3.7.1.3.7.2.1.3.7.2.2.1.3.7.2.2.5 X-ray Examination Station ☑ Server ☑ Server rack ☑ UPS for workstations, equipment and system 📁 HY/2014/04.1.1.3.7.1.3.7.2.1.3.7.2.2.1.3.7.2.2.6 Driver's Waiting Room ☑ CCTV System ☑ Intercom System ☑ Radiation Monitoring and Alarm System ☑ Speaker ☑ UPS for workstations, equipment and system 📁 HY/2014/04.1.1.3.7.1.3.7.2.1.3.7.2.2.1.3.7.2.2.7 Training room ☑ Projector screen (Screen size 106") ☑ Ceiling mounted projector ☑ X-ray System Training Workstation ☑ Radiation Monitoring and Alarm System ☑ UPS for workstations, equipment and system ☑ Training aids ☑ Printer 																																															
	<ul style="list-style-type: none"> 📁 HY/2014/04.1.1.3.8 Section III - Cargo Examination Bureau 322 Construction Works - Section III Complete 📁 HY/2014/04.1.1.3.8.1.3.8.2 Outbound Cargo Examination 320 Cabling and cable containment 321 Installation of X-ray System Image Analysis Workstations, UPS for workstations, equipment and system 📁 HY/2014/04.1.1.3.9 On-Site Testing & Commissioning 335 Operability Test 336 T&C Complete and Issurance of Certificate of Acceptance, 05-Sep-17 345 Contruction Works Complete, 05-Sep-17 📁 HY/2014/04.1.1.3.9.1.3.9.10 Defect Liability Period for Construction 359 Defect Liability Period 360 Submission of Warranty Completion Test Plan 361 Warranty Completion Test 362 DLP Complete and issuance of Defect Liability Certificate 363 Commencement of Maintenance Services 📁 HY/2014/04.1.1.3.9.1.3.9.1 Integration Test 325 Submission of Integration Test Plan 326 Integration Test 327 Preparation, submission and acceptance of Integration Test report 327.5 Complete Inegration Test (MS B.5 - 3 Mar 17) 📁 HY/2014/04.1.1.3.9.1.3.9.2 Site Acceptance Test 329 Submission of SAT Plan 												<ul style="list-style-type: none"> 04-Jul-17, HY/2014/04.1.1.3.8: Section III - Cargo Examination Bureau Construction Works - Section III Complete, 04-Jul-17 04-Jul-17, HY/2014/04.1.1.3.8.1.3.8.2 Outbound Cargo Examination Cabling and cable containment, 04-Jul-17 Installation of X-ray System Image Analysis Workstations, UPS for workstations, equipment and system, 04-Jul-17 Operability Test, 04-Jul-17 T&C Complete and Issurance of Certificate of Acceptance, 05-Sep-17 Contruction Works Complete, 05-Sep-17 Submission of Warranty Completion Test Plan, 05-Sep-17 16-Jun-17, HY/2014/04.1.1.3.9.1.3.9.1 Integration Test Submission of Integration Test Plan, 16-Jun-17 Integration Test, 16-Jun-17 Preparation, submission and acceptance of Integration Test report, 16-Jun-17 Complete Inegration Test (MS B.5 - 3 Mar 17), 16-Jun-17 05-Jul-17, HY/2014/04.1.1.3.9.1.3.9.2 Site Acceptance Test Submission of SAT Plan, 05-Jul-17 																																			

